

■ **836 MHz, EUT Position: EV-DO only**

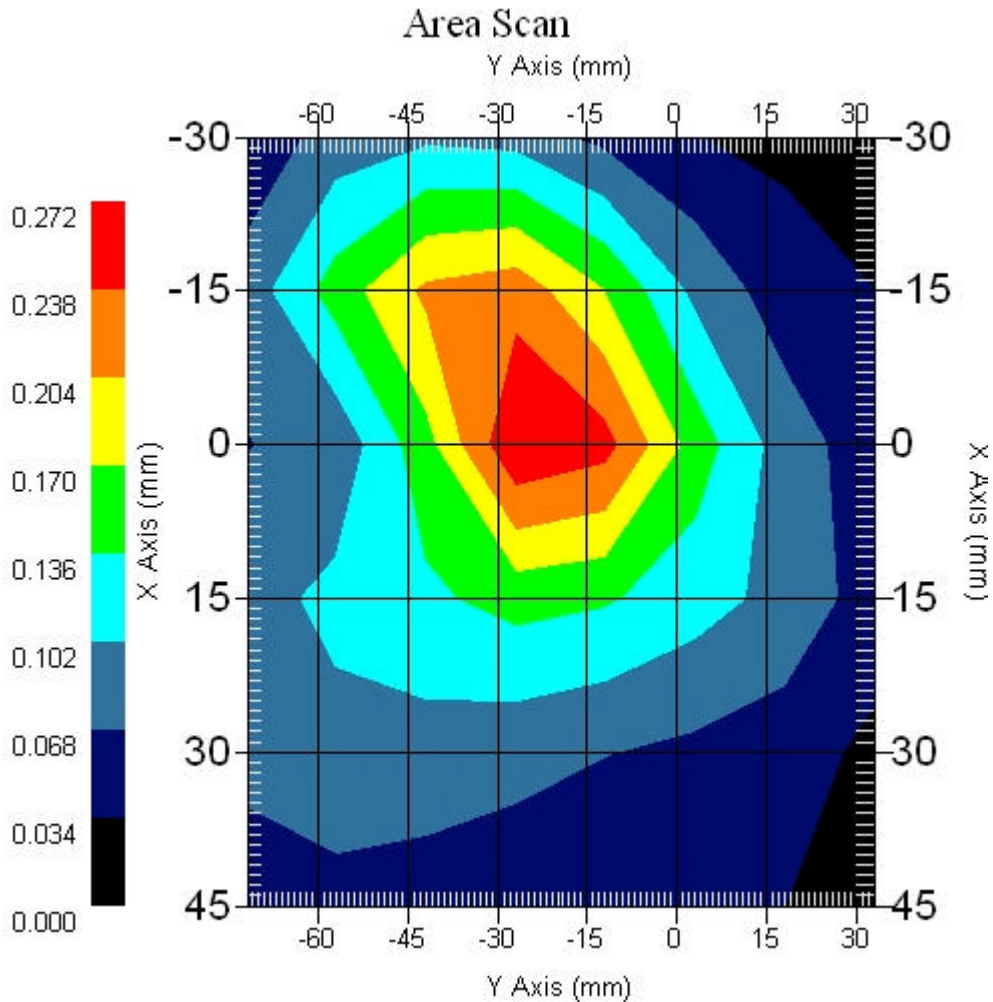
Measurement Data

Crest Factor : 1
 Scan Type : Complete
 Tissue Temp. : 21.20 °C
 Ambient Temp. : 21.50 °C
 Area Scan : 6x8x1 : Measurement x=15mm, y=15mm, z=4mm
 Zoom Scan : 5x5x8 : Measurement x=8mm, y=8mm, z=4mm

Other Data

DUT Position : Touch
 Separation : 0
 Channel : Mid - 836MHz

Power Drift-Start : 0.172 W/kg
 Power Drift-Finish: 0.176 W/kg
 Power Drift (%) : 2.325



1 gram SAR value : 0.260 W/kg
 10 gram SAR value : 0.165 W/kg
 Area Scan Peak SAR : 0.270 W/kg
 Zoom Scan Peak SAR : 0.390 W/kg

■ 5785 MHz, EUT Position: Tablet, PL 836 EV-DO

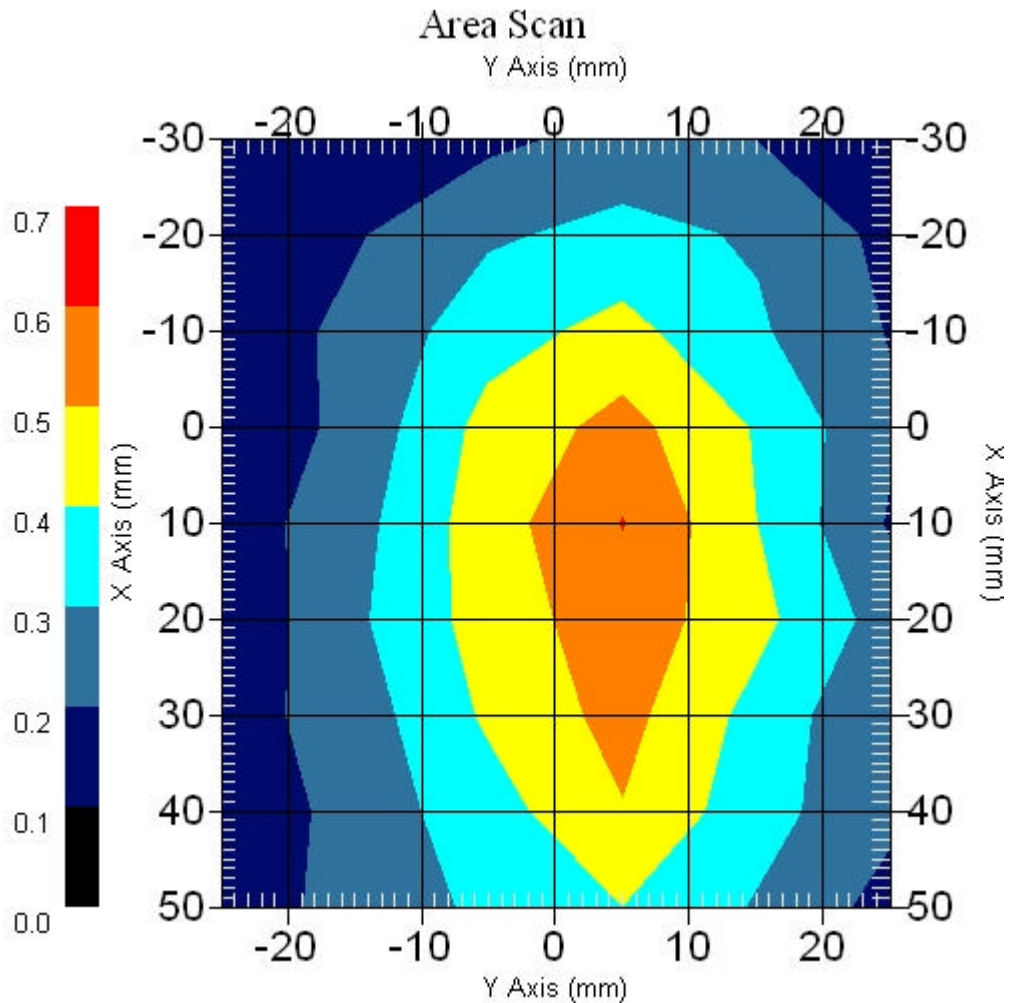
Measurement Data

Crest Factor : 1
Scan Type : Complete
Area Scan : 9x6x1 : Measurement x=10mm, y=10mm, z=4mm
Zoom Scan : 5x5x11 : Measurement x=8mm, y=8mm, z=3mm

Other Data

DUT Position : Touch
Separation : 0
Channel : Mid - 5785MHz

Power Drift-Start : 0.492 W/kg
Power Drift-Finish: 0.507 W/kg
Power Drift (%) : 3.049



1 gram SAR value : 0.598 W/kg
10 gram SAR value : 0.425 W/kg
Area Scan Peak SAR : 0.603 W/kg
Zoom Scan Peak SAR : 0.990 W/kg

■ 5785 MHz, EUT Position: Tablet, PP 836 EV-DO

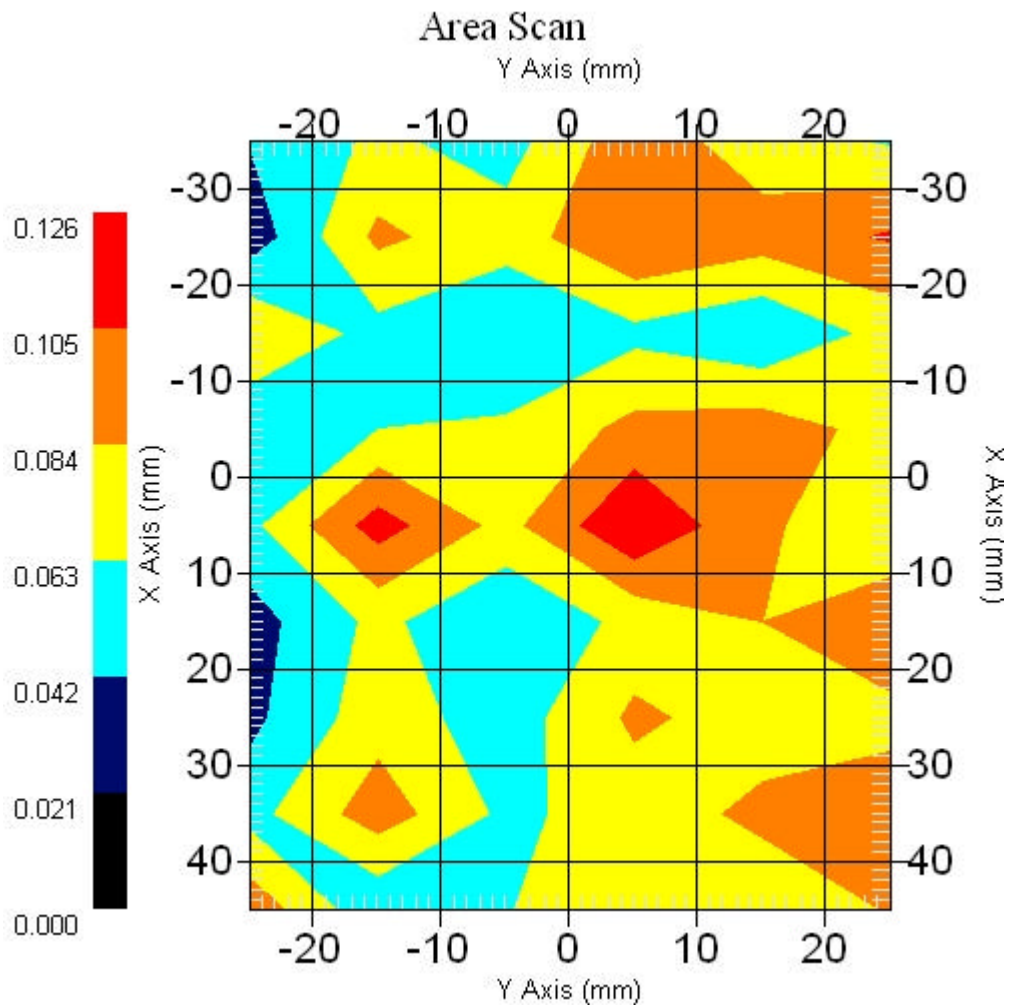
Measurement Data

Crest Factor : 1
 Scan Type : Complete
 Area Scan : 9x6x1 : Measurement x=10mm, y=10mm, z=4mm
 Zoom Scan : 9x9x13 : Measurement x=4mm, y=4mm, z=2.5mm

Other Data

DUT Position : Touch
 Separation : 0
 Channel : Mid - 5785

Power Drift-Start : 0.128 W/kg
 Power Drift-Finish: 0.132 W/kg
 Power Drift (%) : 3.125



1 gram SAR value : 0.107 W/kg
 10 gram SAR value : 0.075 W/kg
 Area Scan Peak SAR : 0.125 W/kg
 Zoom Scan Peak SAR : 0.210 W/kg

■ 5785 MHz, EUT Position: Tablet, SL 836 EV-DO

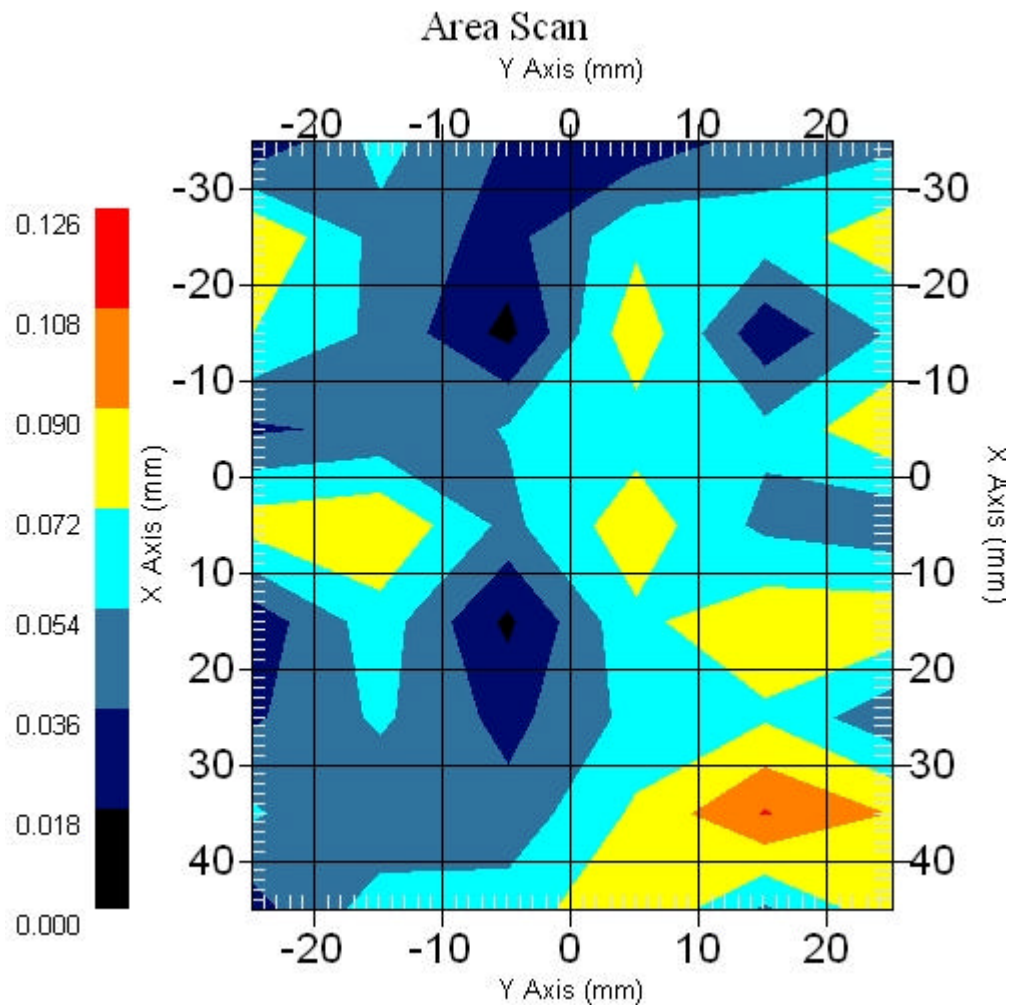
Measurement Data

Crest Factor : 1
Scan Type : Complete
Area Scan : 9x6x1 : Measurement x=10mm, y=10mm, z=4mm
Zoom Scan : 9x9x13 : Measurement x=4mm, y=4mm, z=2.5mm

Other Data

DUT Position : Touch
Separation : 0
Channel : Mid - 5785

Power Drift-Start : 0.079 W/kg
Power Drift-Finish: 0.076 W/kg
Power Drift (%) : -3.797



1 gram SAR value : 0.134 W/kg
10 gram SAR value : 0.099 W/kg
Area Scan Peak SAR : 0.109 W/kg
Zoom Scan Peak SAR : 0.220 W/kg

■ 5785 MHz Only, EUT Position: Tablet, SP

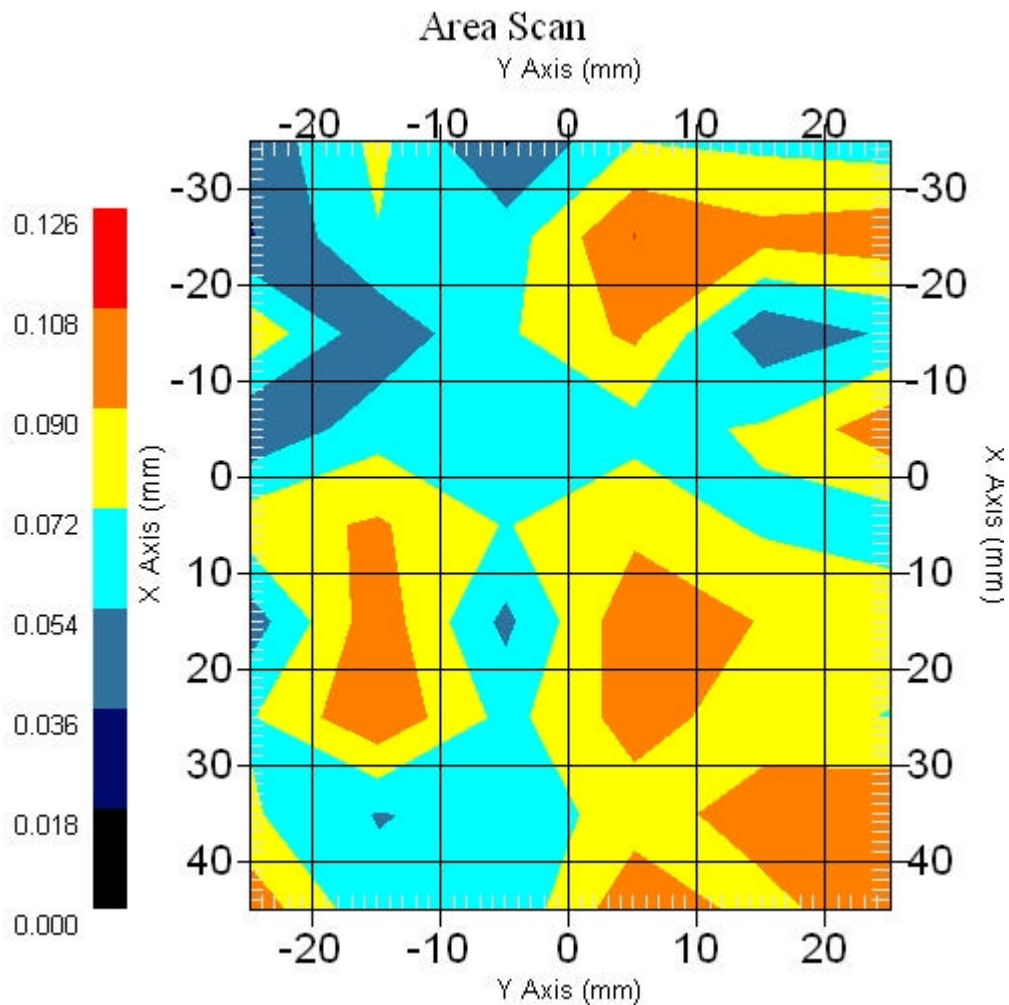
Measurement Data

Crest Factor : 1
Scan Type : Complete
Area Scan : 9x6x1 : Measurement x=10mm, y=10mm, z=4mm
Zoom Scan : 9x9x13 : Measurement x=4mm, y=4mm, z=2.5mm

Other Data

DUT Position : Touch
Separation : 0
Channel : Mid - 5785MHz

Power Drift-Start : 0.091 W/kg
Power Drift-Finish: 0.095 W/kg
Power Drift (%) : 4.395

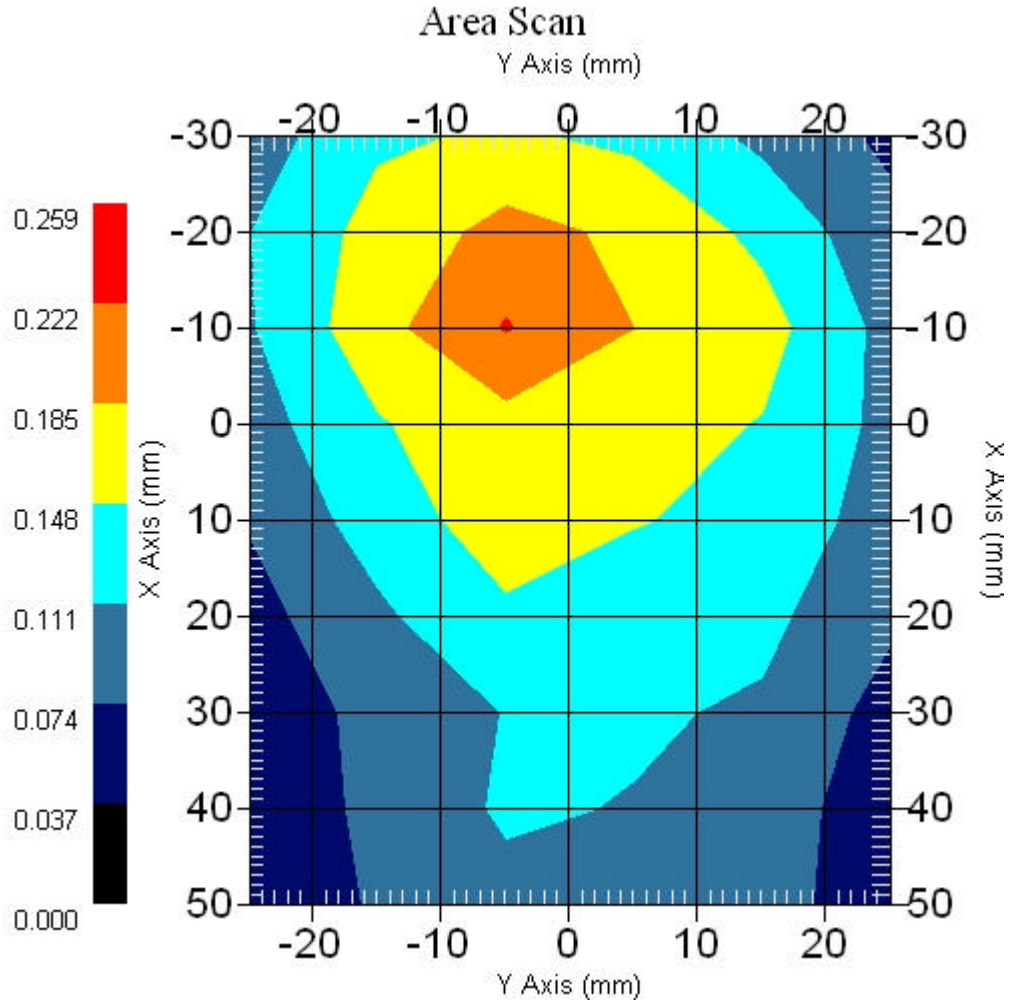


1 gram SAR value : 0.104 W/kg
10 gram SAR value : 0.089 W/kg
Area Scan Peak SAR : 0.108 W/kg
Zoom Scan Peak SAR : 0.110 W/kg

■ EUT Position: Tablet, SP , 836 EV-DO Only

Measurement Data

Crest Factor : 1
Scan Type : Complete
Area Scan : 9x6x1 : Measurement x=10mm, y=10mm, z=4mm
Zoom Scan : 5x5x8 : Measurement x=8mm, y=8mm, z=4mm
DUT Position : Touch
Separation : 0
Channel : Mid - 800MHz
Power Drift-Start : 0.175 W/kg
Power Drift-Finish: 0.173 W/kg
Power Drift (%) : -0.939



1 gram SAR value : 0.203 W/kg
10 gram SAR value : 0.130 W/kg
Area Scan Peak SAR : 0.225 W/kg
Zoom Scan Peak SAR : 0.350 W/kg

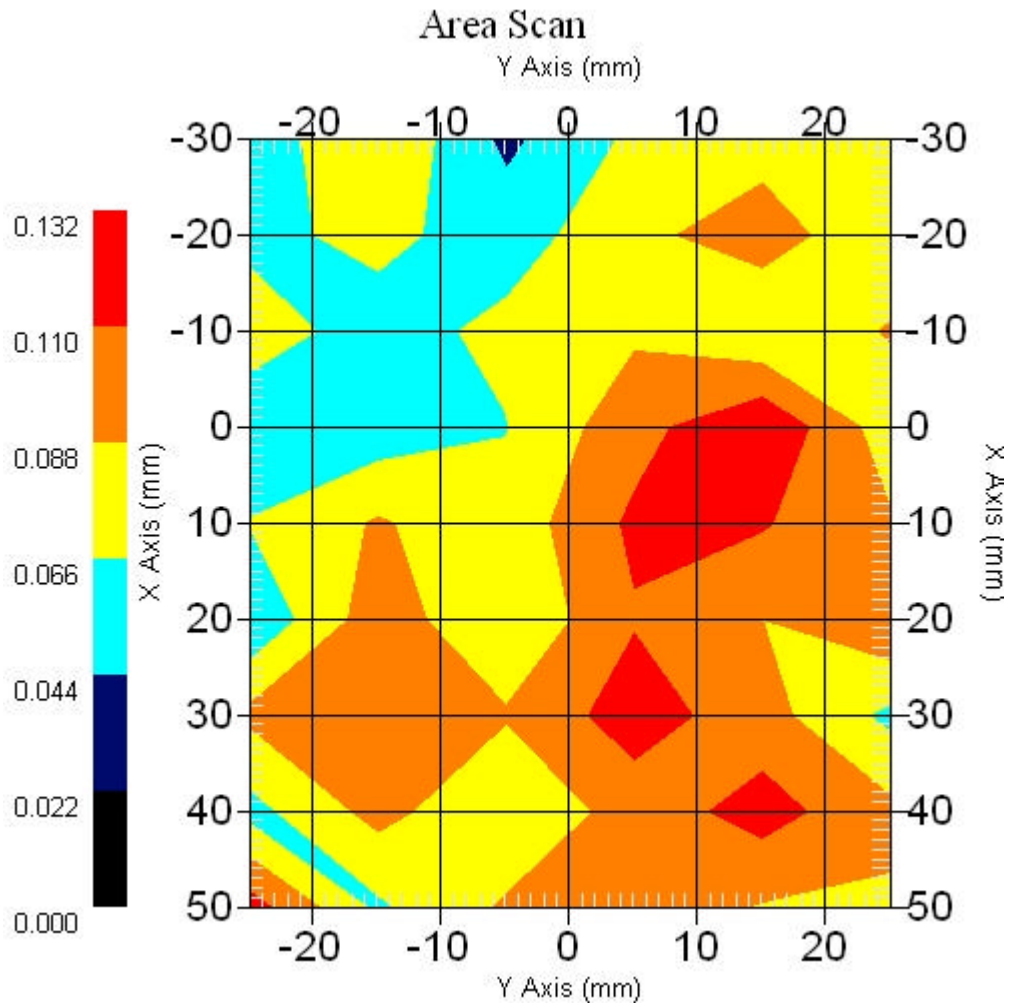
■ 5785 MHz, EUT Position: Tablet, PL , 1880 EV-DO

Measurement Data

Crest Factor : 1
Scan Type : Complete
Area Scan : 9x6x1 : Measurement x=10mm, y=10mm, z=4mm
Zoom Scan : 9x9x13 : Measurement x=4mm, y=4mm, z=2.5mm

DUT Position : Touch
Separation : 0
Channel : Mid - 5785MHz

Power Drift-Start : 0.087 W/kg
Power Drift-Finish: 0.083 W/kg
Power Drift (%) : -4.597



1 gram SAR value : 0.163 W/kg
10 gram SAR value : 0.140 W/kg
Area Scan Peak SAR : 0.130 W/kg
Zoom Scan Peak SAR : 0.189 W/kg

■ 5785 MHz, EUT Position: Tablet, PP , 1880 EV-DO

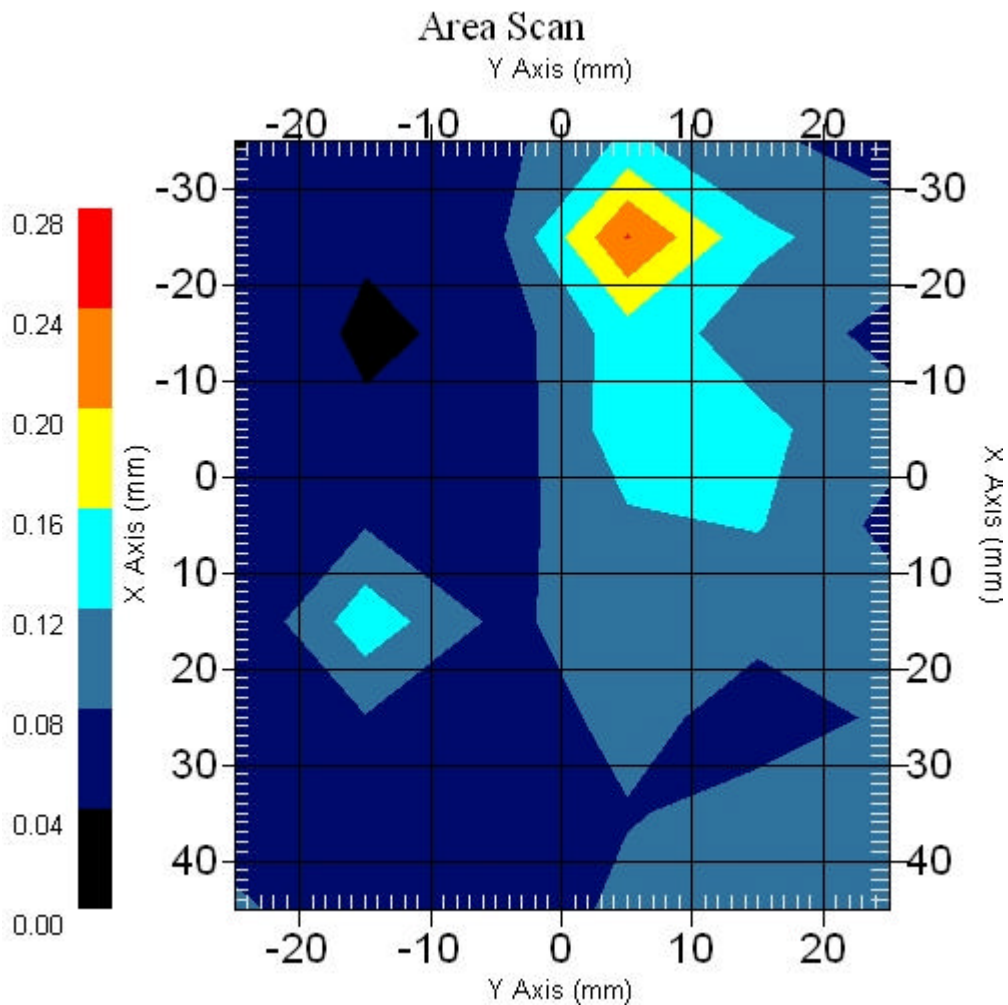
Measurement Data

Crest Factor : 1
Scan Type : Complete
Area Scan : 9x6x1 : Measurement x=10mm, y=10mm, z=4mm
Zoom Scan : 9x9x13 : Measurement x=4mm, y=4mm, z=2.5mm

Other Data

DUT Position : Touch
Separation : 0
Channel : Mid - 5785

Power Drift-Start : 0.139W/kg
Power Drift-Finish: 0.143 W/kg
Power Drift (%) : 2.878



1 gram SAR value : 0.182 W/kg
10 gram SAR value : 0.107 W/kg
Area Scan Peak SAR : 0.242 W/kg
Zoom Scan Peak SAR : 0.352 W/kg

■ **5785 MHz, EUT Position: Tablet, SL , 1880 EV-DO**

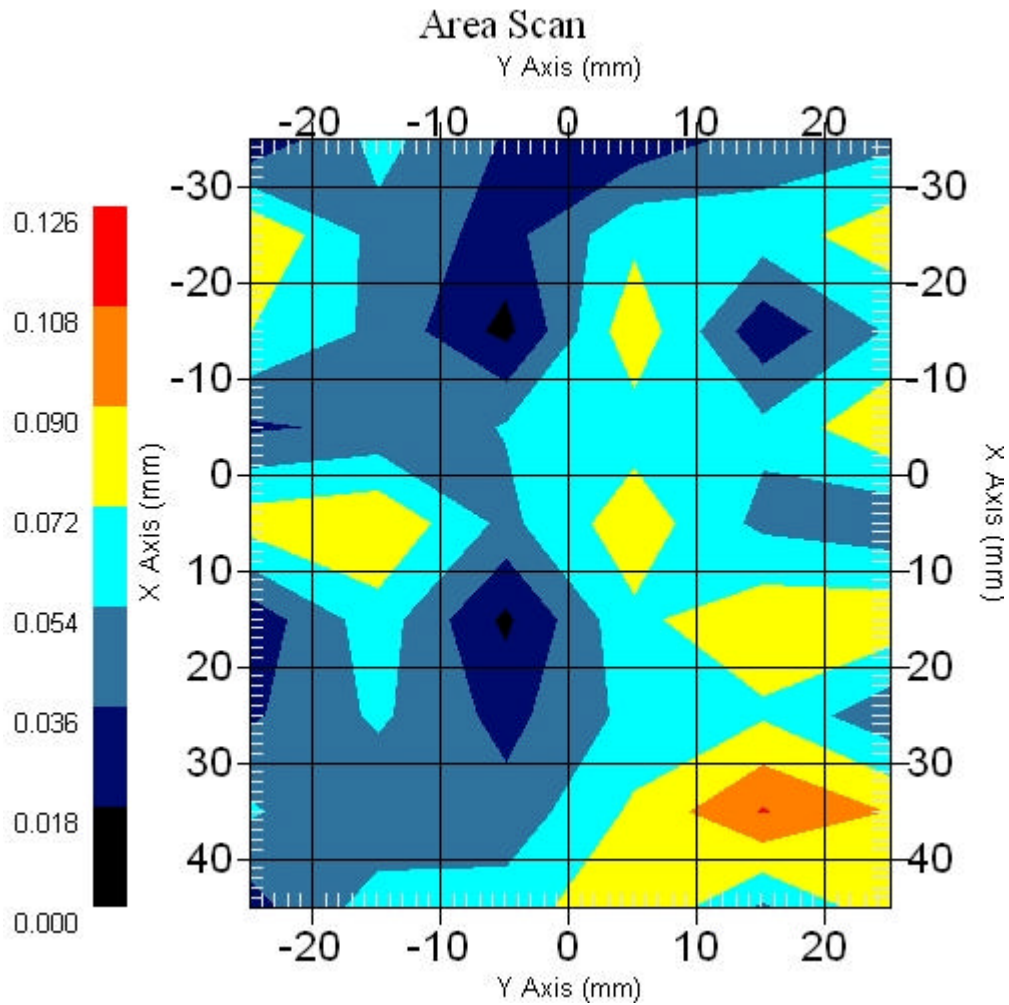
Measurement Data

Crest Factor : 1
Scan Type : Complete
Area Scan : 9x6x1 : Measurement x=10mm, y=10mm, z=4mm
Zoom Scan : 9x9x13 : Measurement x=4mm, y=4mm, z=2.5mm

Other Data

DUT Position : Touch
Separation : 0
Channel : Mid - 5785

Power Drift-Start : 0.079 W/kg
Power Drift-Finish: 0.076 W/kg
Power Drift (%) : -3.797



1 gram SAR value : 0.134 W/kg
10 gram SAR value : 0.099 W/kg
Area Scan Peak SAR : 0.109 W/kg
Zoom Scan Peak SAR : 0.220 W/kg

■ 5785 MHz, EUT Position: Tablet, SP , 1880 EV-DO

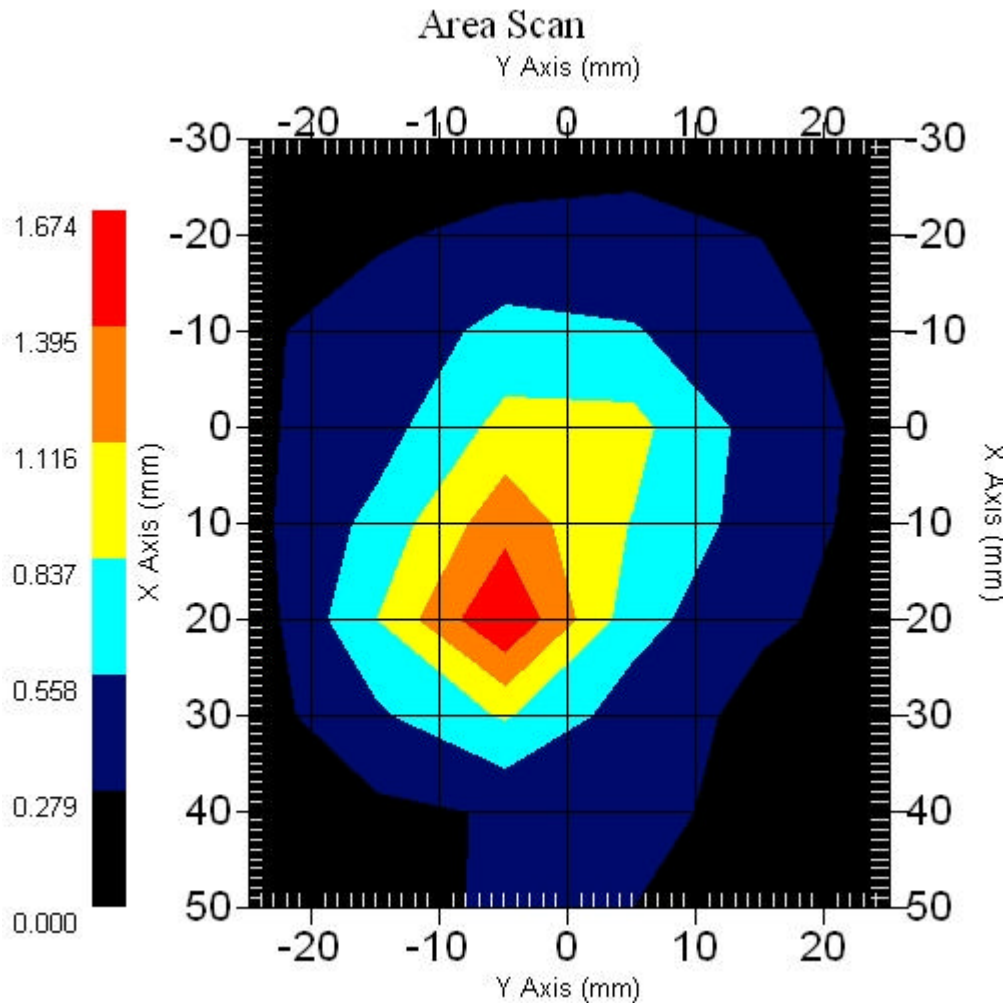
Measurement Data

Crest Factor : 1
Scan Type : Complete
Area Scan : 9x6x1 : Measurement x=10mm, y=10mm, z=4mm
Zoom Scan : 9x9x13 : Measurement x=4mm, y=4mm, z=2.5mm

Other Data

DUT Position : Touch
Separation : 0
Channel : Mid - 5785MHz

Power Drift-Start : 1.047 W/kg
Power Drift-Finish: 1.000 W/kg
Power Drift (%) : -4.486

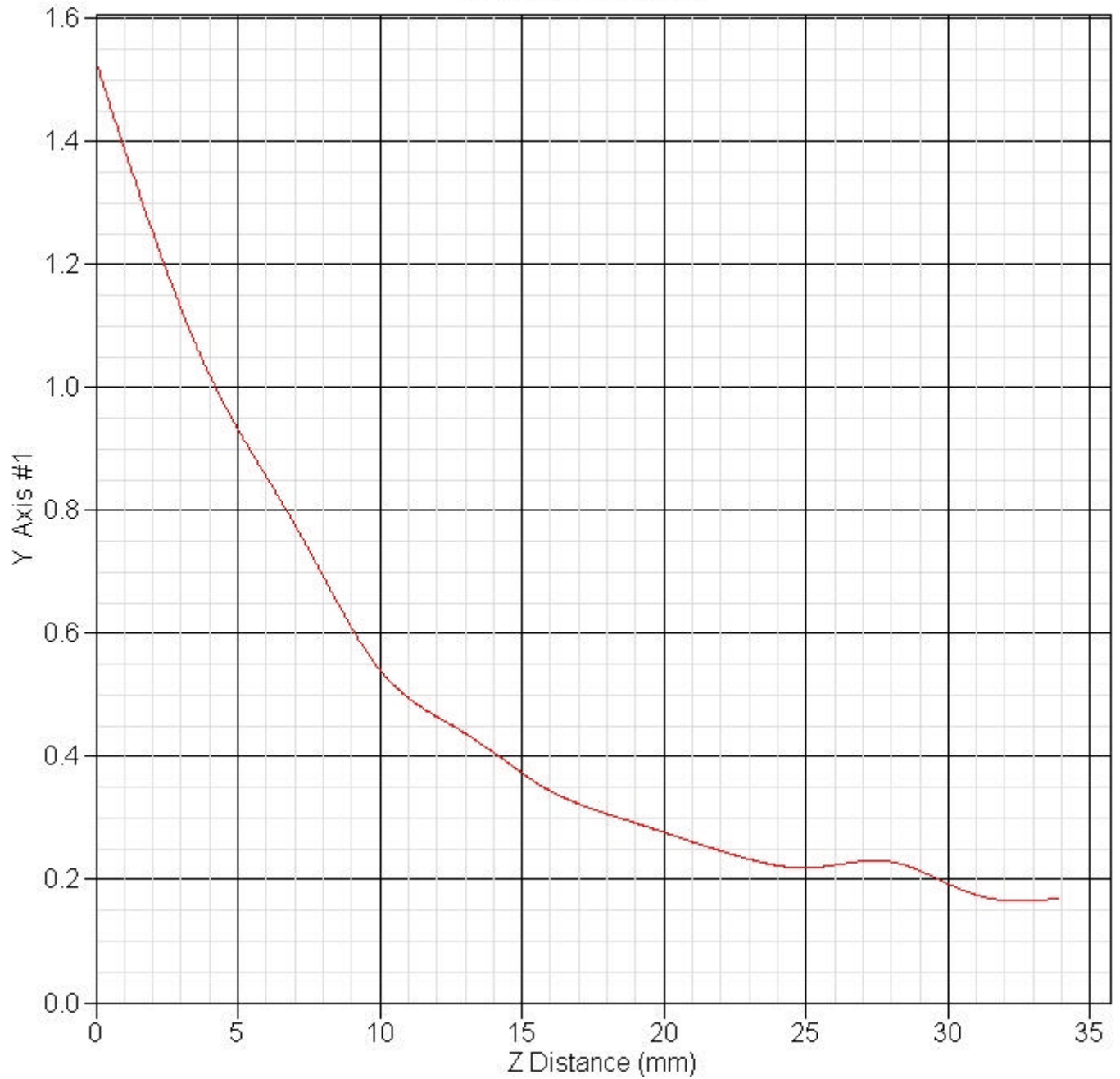


1 gram SAR value : 1.286 W/kg
10 gram SAR value : 0.696 W/kg
Area Scan Peak SAR : 1.674 W/kg
Zoom Scan Peak SAR : 2.472 W/kg

■ Z Axis 802.11a 5785 MHz, Position: Tablet SP, 1880 GSM

SAR-Z Axis

at Hotspot x:20.20 y:-5.00



15 Setup Photographs

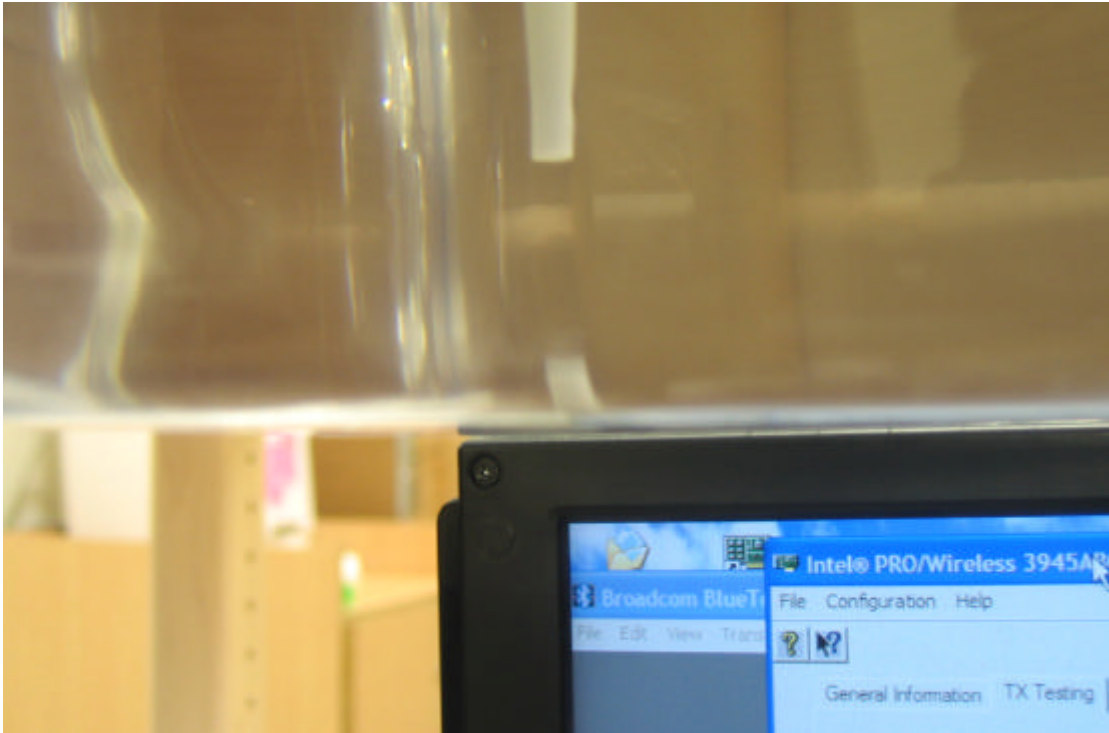
■ LAPTOP mode



■ Tablet PL Mode



■ Tablet PP Mode



■ Tablet SL Mode

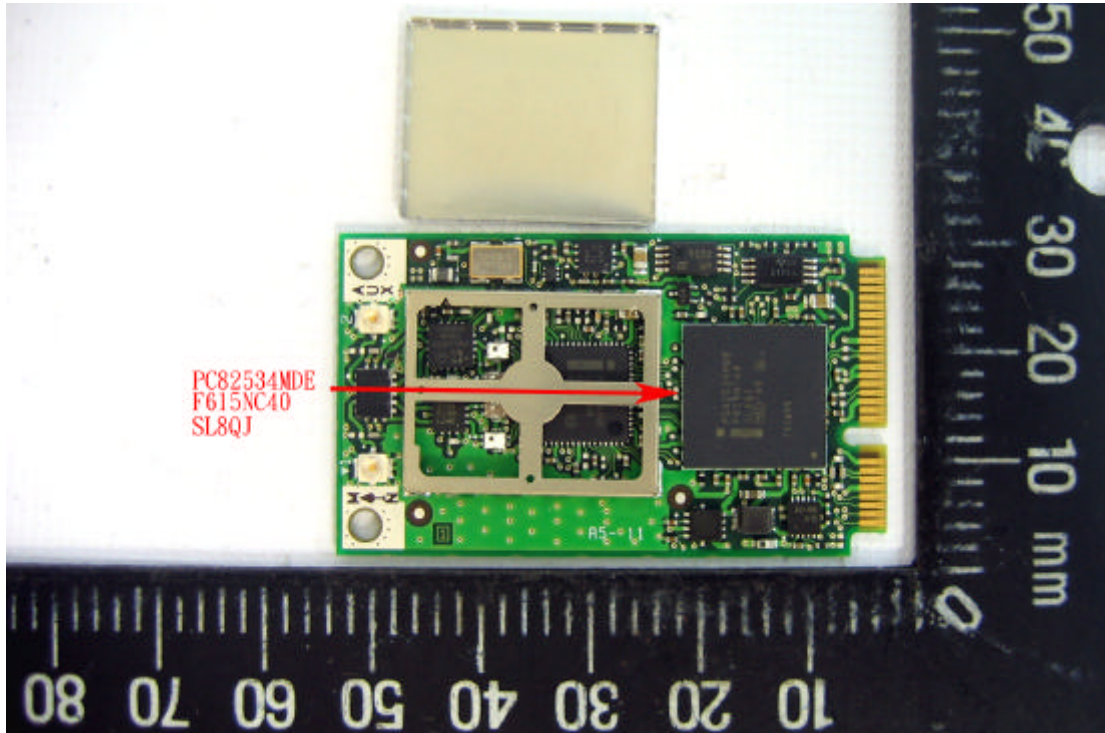


■ Tablet SP Mode

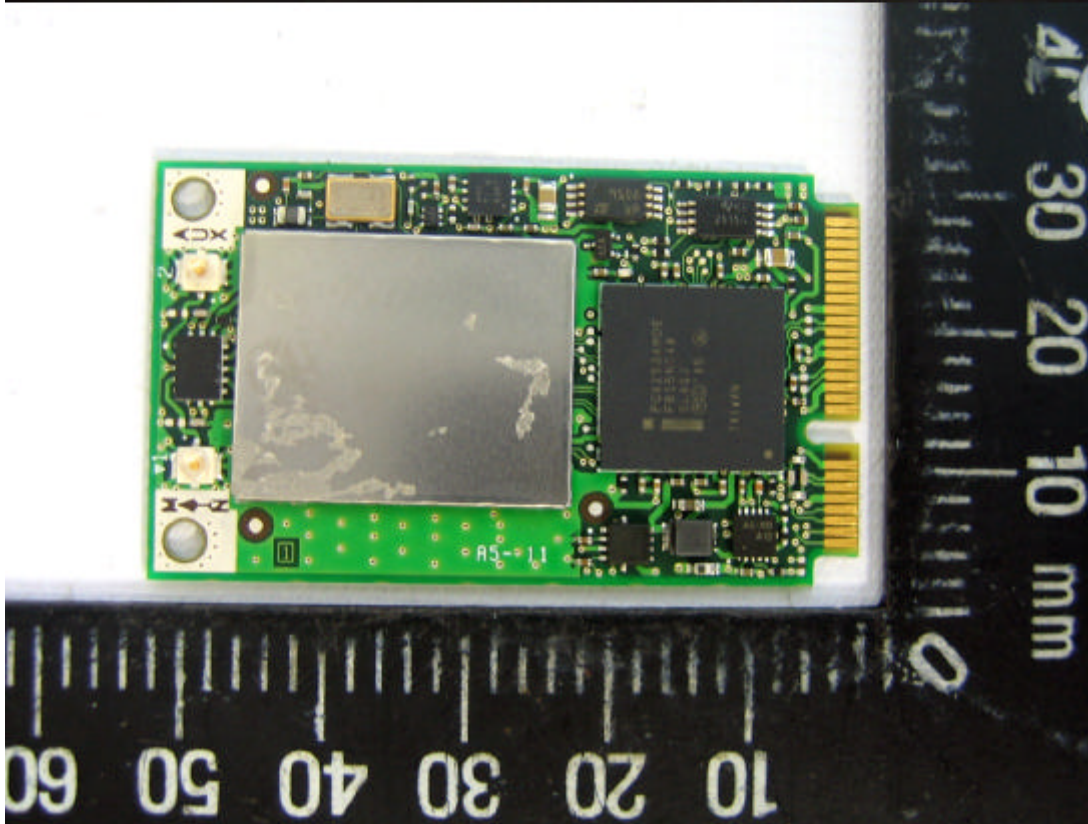
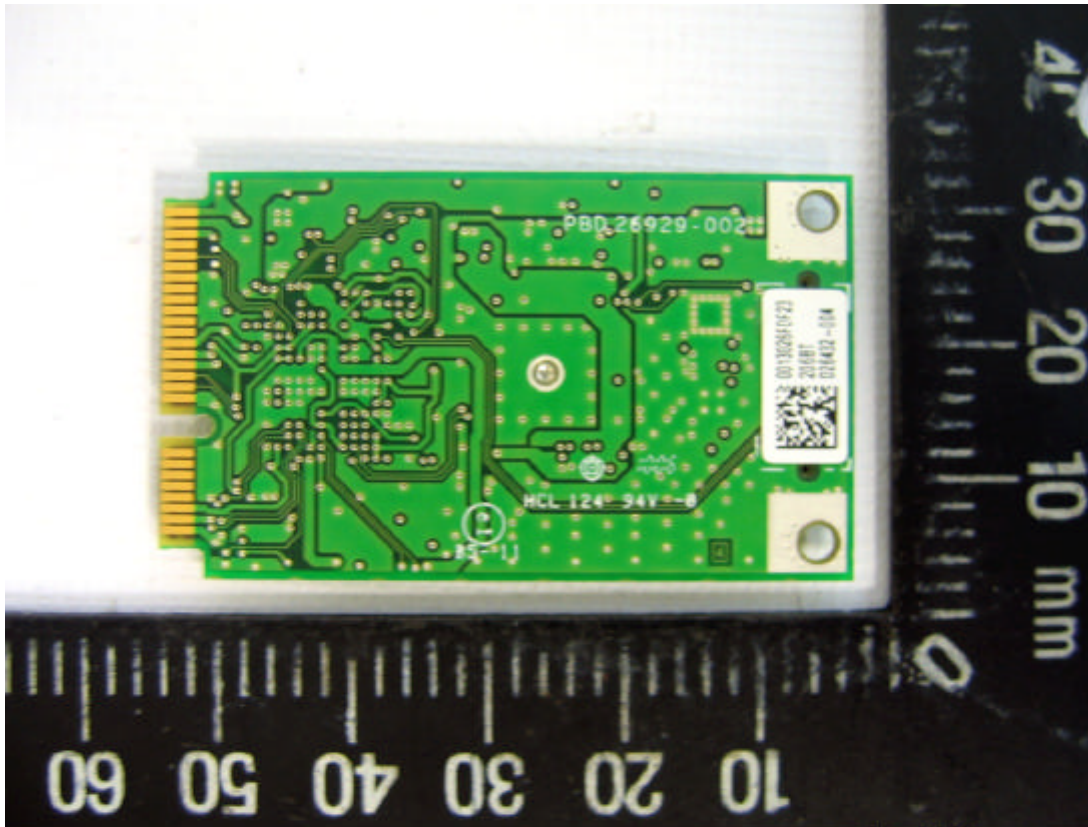


16 EUT Photographs

■ EUT-1



■ EUT-2



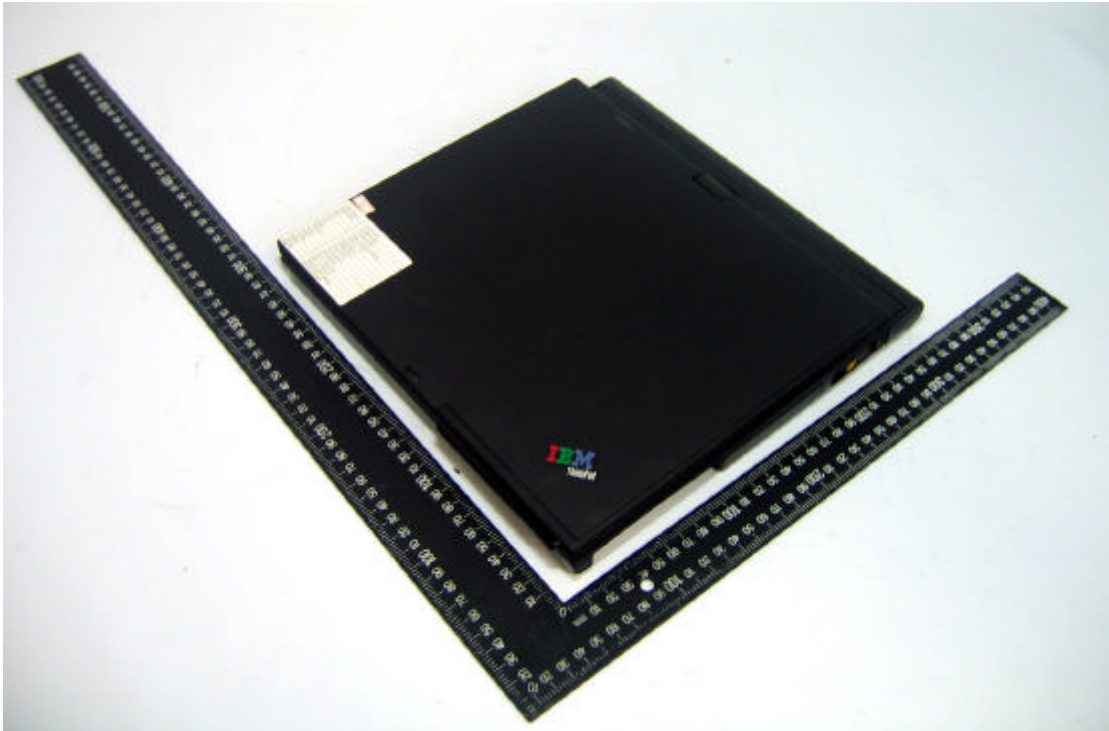
■ **Built_In PC-1**



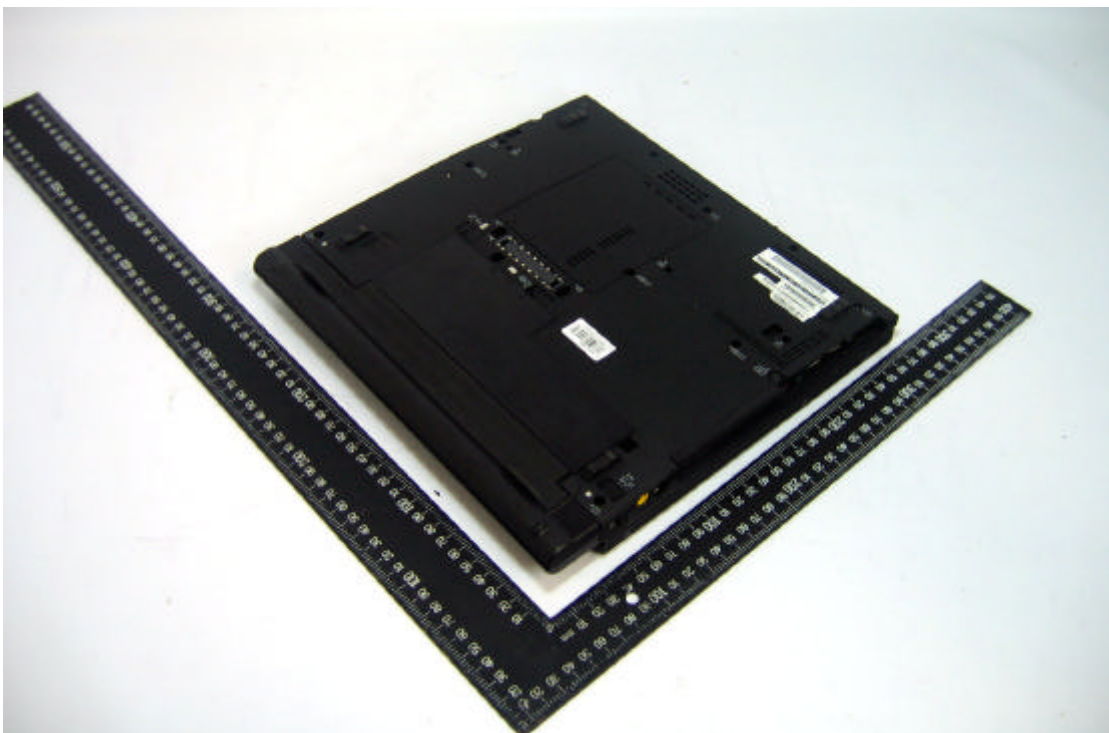
■ **Built_In PC -2**



■ **Built_In PC -3**



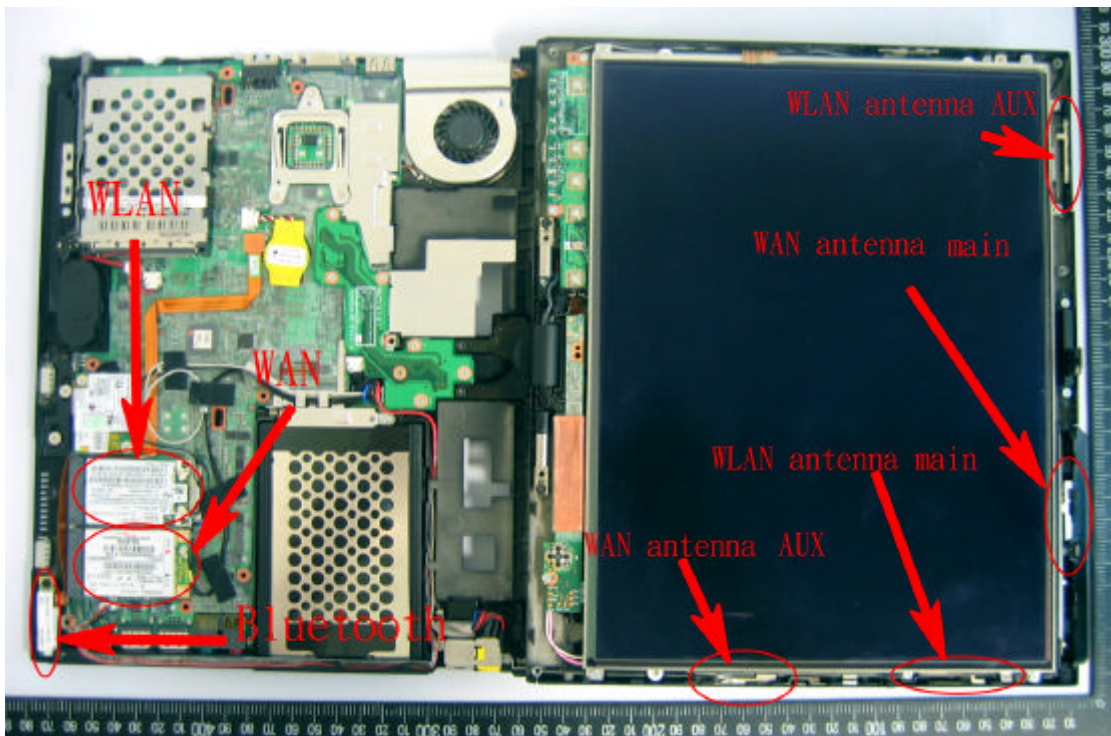
■ **Built_In PC -4**



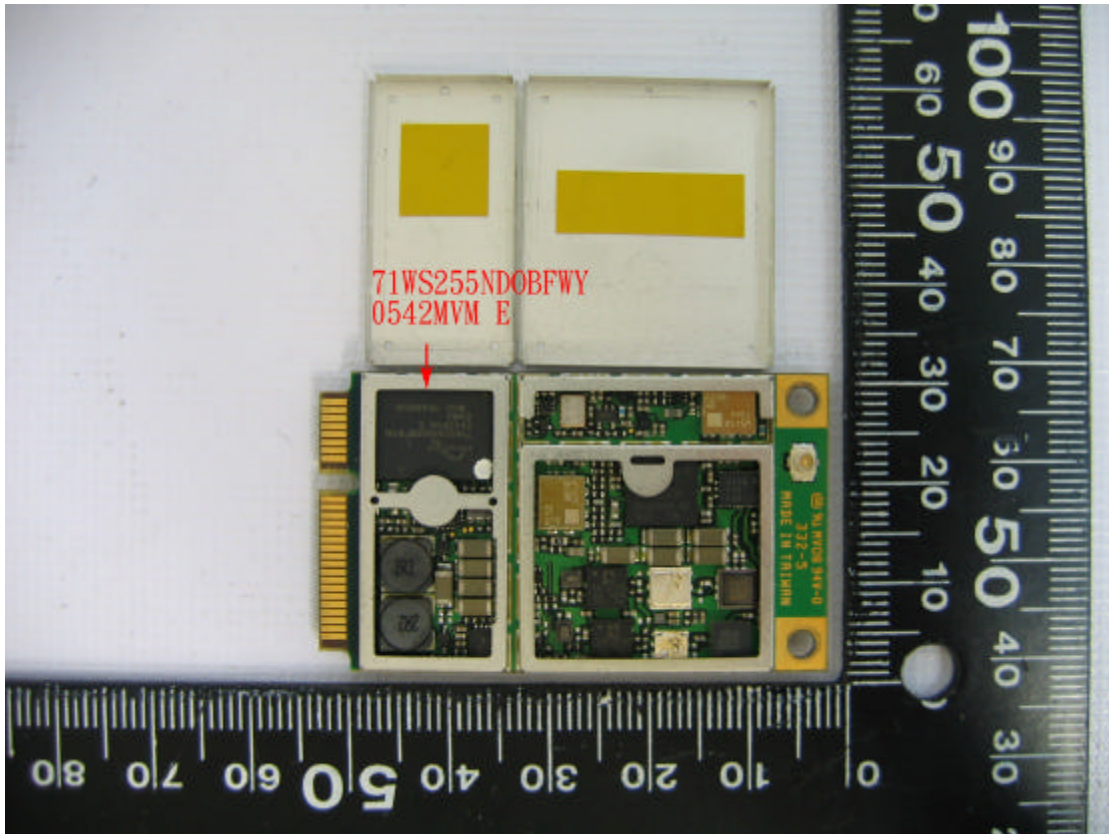
■ Built_In PC -5



■ Built_In PC -6



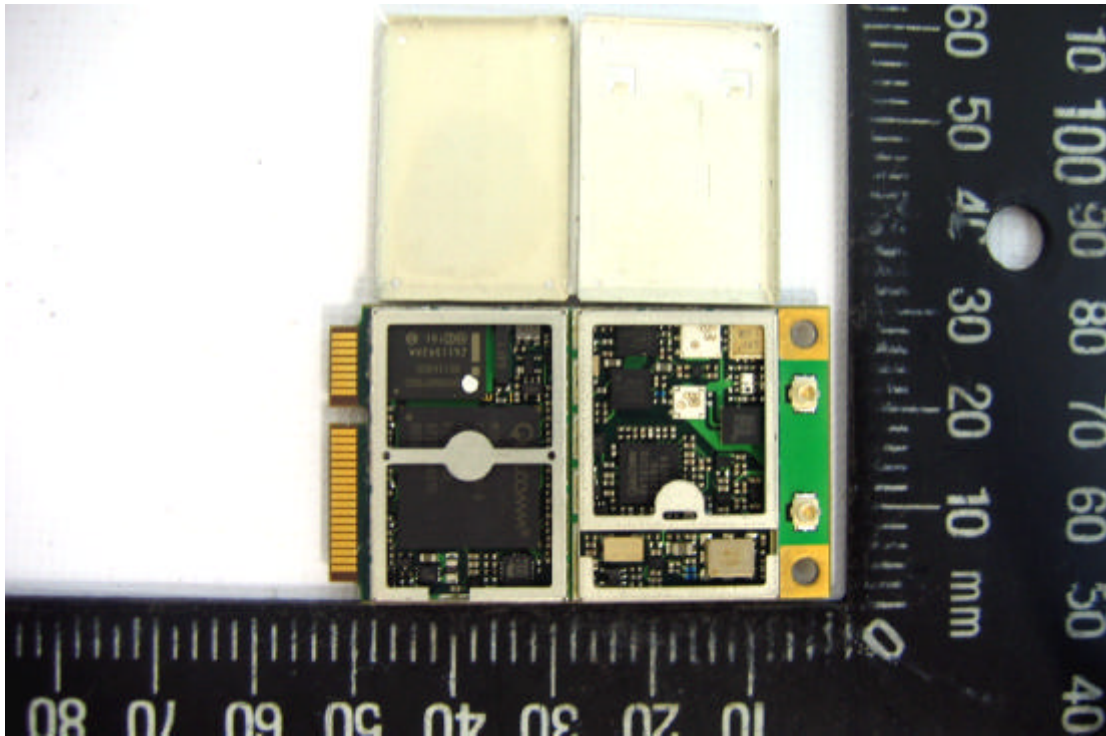
■ **karafuto-1**



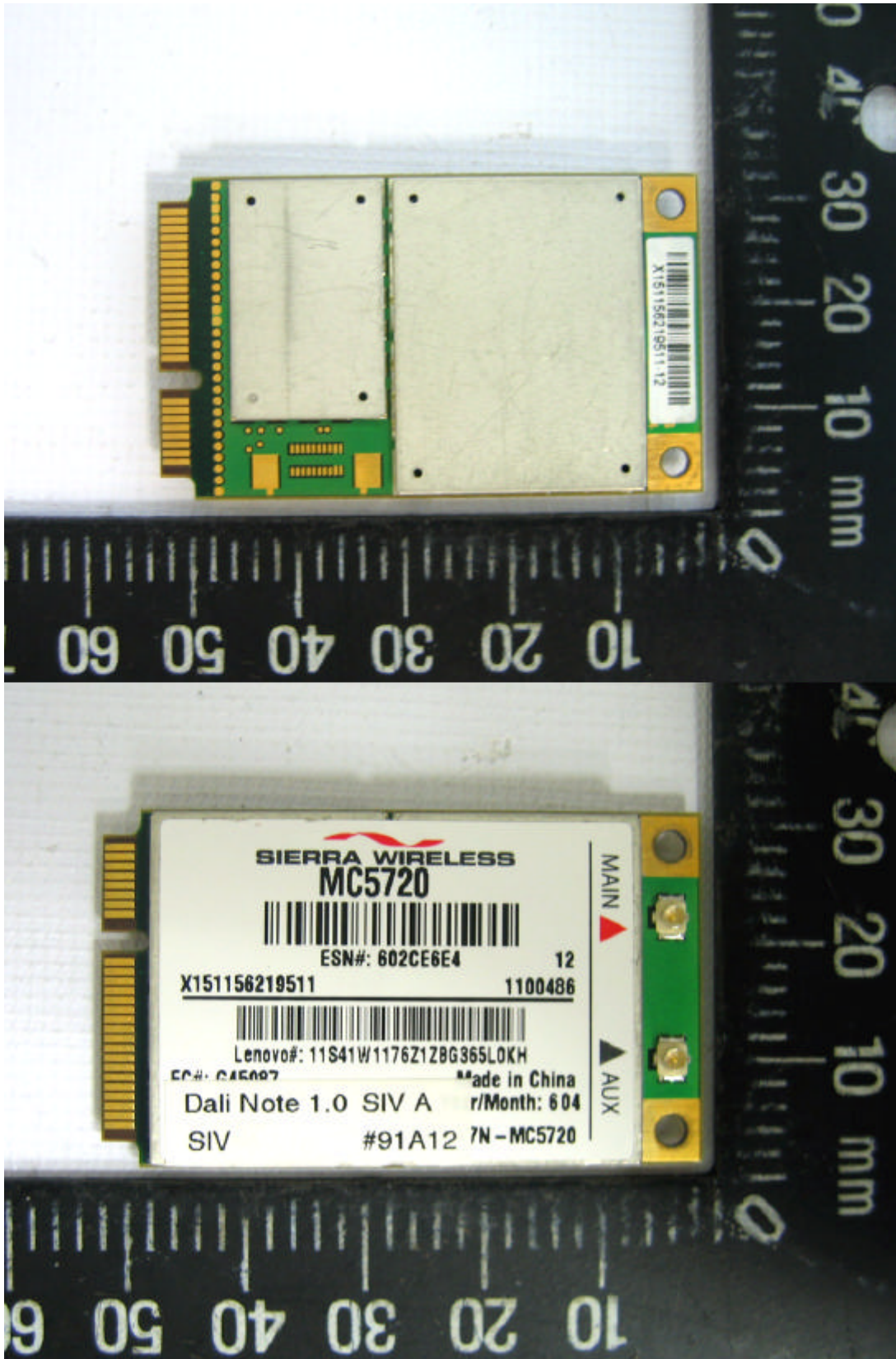
■ karafoto-2



■ **Tosa-1**



■ Tosa-2



17 Appendix: Probe and Validation Dipole calibration

17.1 Probe: Refer to Probe_Cal.Pdf attached.

17.2 Dipole: Refer to Dipole_Cal.pdf attached.