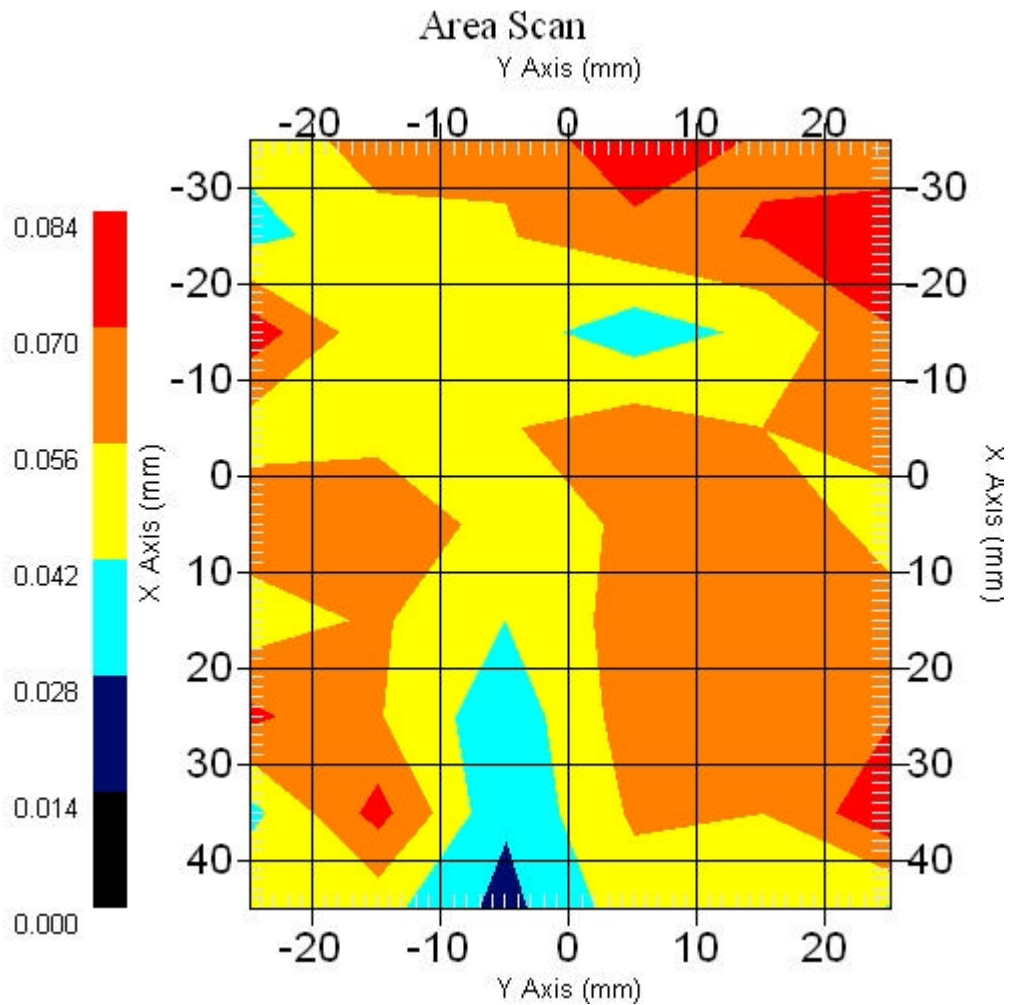


■ 5785 MHz, EUT Position: Tablet, SL,836 GSM

Measurement Data

Crest Factor : 1
Scan Type : Complete
Area Scan : 9x6x1 : Measurement x=10mm, y=10mm, z=4mm
Zoom Scan : 9x9x13 : Measurement x=4mm, y=4mm, z=2.5mm
Other Data
DUT Position : Touch
Separation : 0
Channel : Mid - 5785MHz
Power Drift-Start : 0.062 W/kg
Power Drift-Finish: 0.059 W/kg
Power Drift (%) : -4.838
Picture :



1 gram SAR value : 0.128 W/kg
10 gram SAR value : 0.086 W/kg
Area Scan Peak SAR : 0.082 W/kg
Zoom Scan Peak SAR : 0.230 W/kg

■ 5785 MHz Only, EUT Position: Tablet, SP

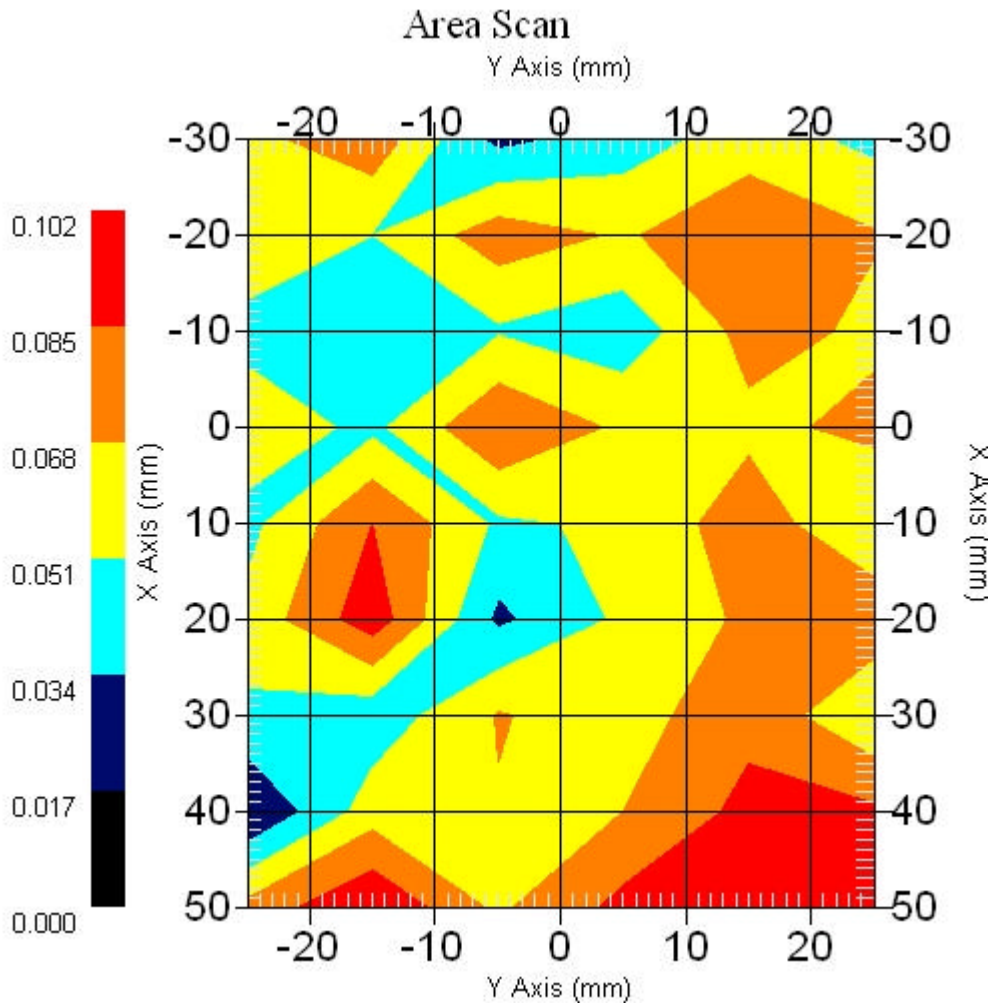
Measurement Data

Crest Factor : 1
Scan Type : Complete
Area Scan : 9x6x1 : Measurement x=10mm, y=10mm, z=4mm
Zoom Scan : 9x9x13 : Measurement x=4mm, y=4mm, z=2.5mm

Other Data

DUT Position : Touch
Separation : 0
Channel : Mid - 5745MHz

Power Drift-Start : 0.096 W/kg
Power Drift-Finish: 0.092 W/kg
Power Drift (%) : -4.166
Picture :



1 gram SAR value : 0.176 W/kg
10 gram SAR value : 0.099 W/kg
Area Scan Peak SAR : 0.101 W/kg
Zoom Scan Peak SAR : 0.510 W/kg

■ EUT Position: Tablet, SP, 836 GSM Only

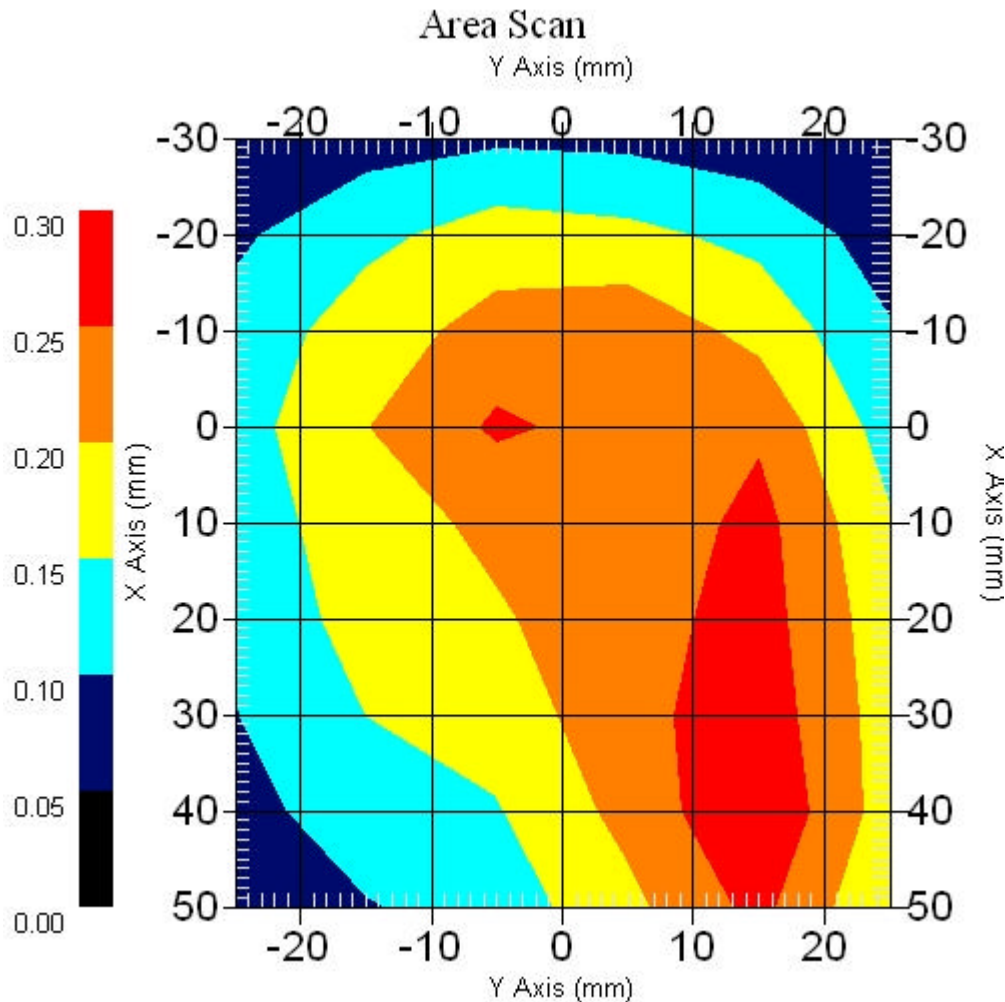
Measurement Data

Crest Factor : 1
Scan Type : Complete
Area Scan : 9x6x1 : Measurement x=10mm, y=10mm, z=4mm
Zoom Scan : 9x9x13 : Measurement x=4mm, y=4mm, z=2.5mm

Other Data

DUT Position : Touch
Separation : 0
Channel : Mid - 850

Power Drift-Start : 0.249 W/kg
Power Drift-Finish: 0.250 W/kg
Power Drift (%) : 4.016
Picture :



1 gram SAR value : 0.283 W/kg
10 gram SAR value : 0.173 W/kg
Area Scan Peak SAR : 0.298 W/kg
Zoom Scan Peak SAR : 0.510 W/kg

■ 5785 MHz Only, EUT Position: Tablet, SP

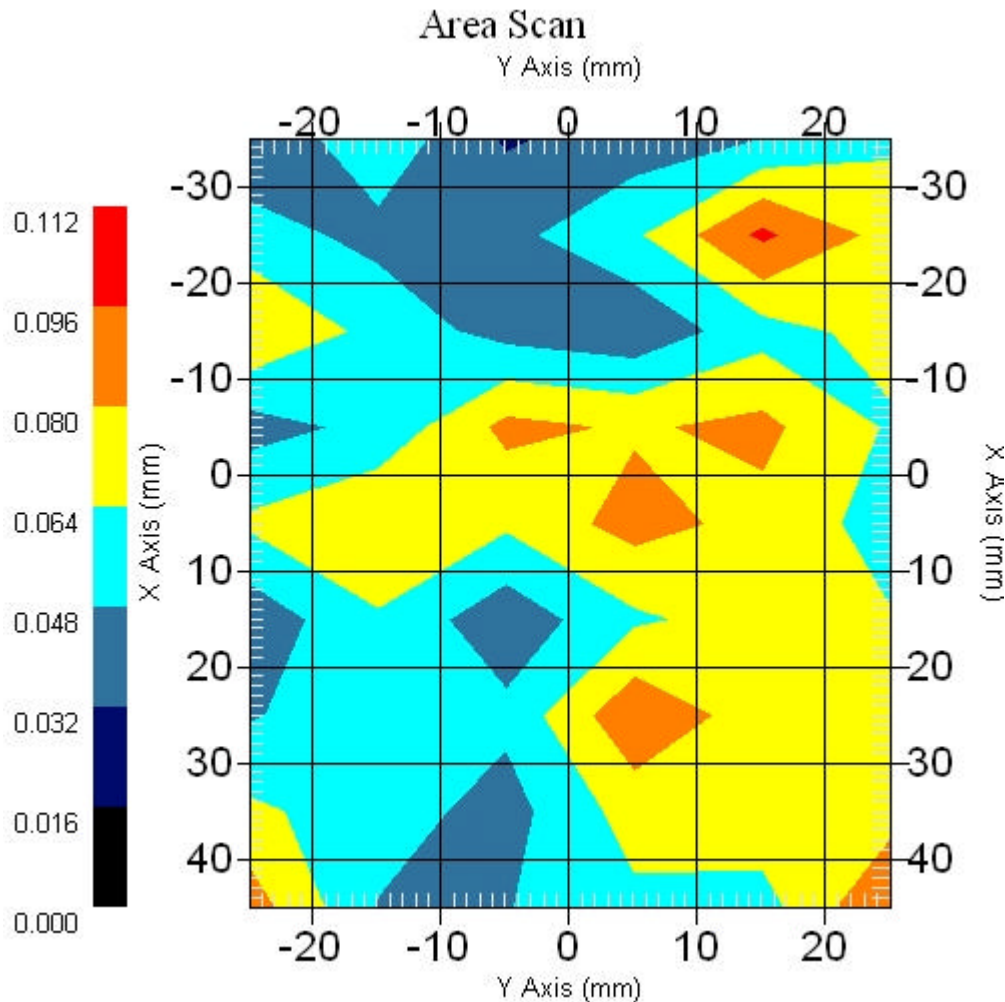
Measurement Data

Crest Factor : 1
Scan Type : Complete
Area Scan : 9x6x1 : Measurement x=10mm, y=10mm, z=4mm
Zoom Scan : 9x9x13 : Measurement x=4mm, y=4mm, z=2.5mm

Other Data

DUT Position : Touch
Separation : 0
Channel : Mid - 5785MHz

Power Drift-Start : 0.069 W/kg
Power Drift-Finish: 0.072 W/kg
Power Drift (%) : 4.347
Picture :



1 gram SAR value : 0.092 W/kg
10 gram SAR value : 0.068 W/kg
Area Scan Peak SAR : 0.099 W/kg
Zoom Scan Peak SAR : 0.110 W/kg

■ 5785 MHz Only, EUT Position: Tablet, SP

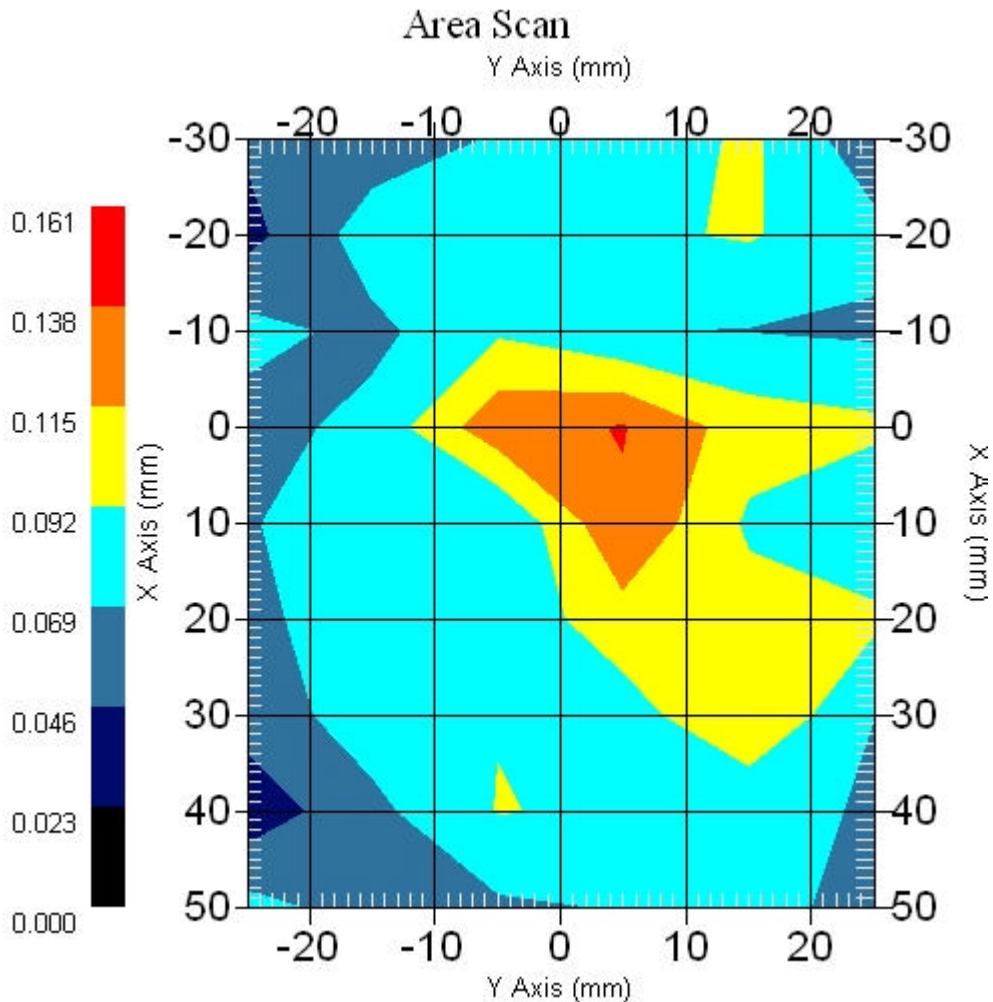
Measurement Data

Crest Factor : 1
Scan Type : Complete
Area Scan : 9x6x1 : Measurement x=10mm, y=10mm, z=4mm
Zoom Scan : 9x9x13 : Measurement x=4mm, y=4mm, z=2.5mm

Other Data

DUT Position : Touch
Separation : 0
Channel : Mid - 5825MHz

Power Drift-Start : 0.093 W/kg
Power Drift-Finish: 0.089 W/kg
Power Drift (%) : -4.301
Picture :



1 gram SAR value : 0.120 W/kg
10 gram SAR value : 0.097 W/kg
Area Scan Peak SAR : 0.139 W/kg
Zoom Scan Peak SAR : 0.300 W/kg

■ 5785 MHz, EUT Position: Laptop, 836 EGSM

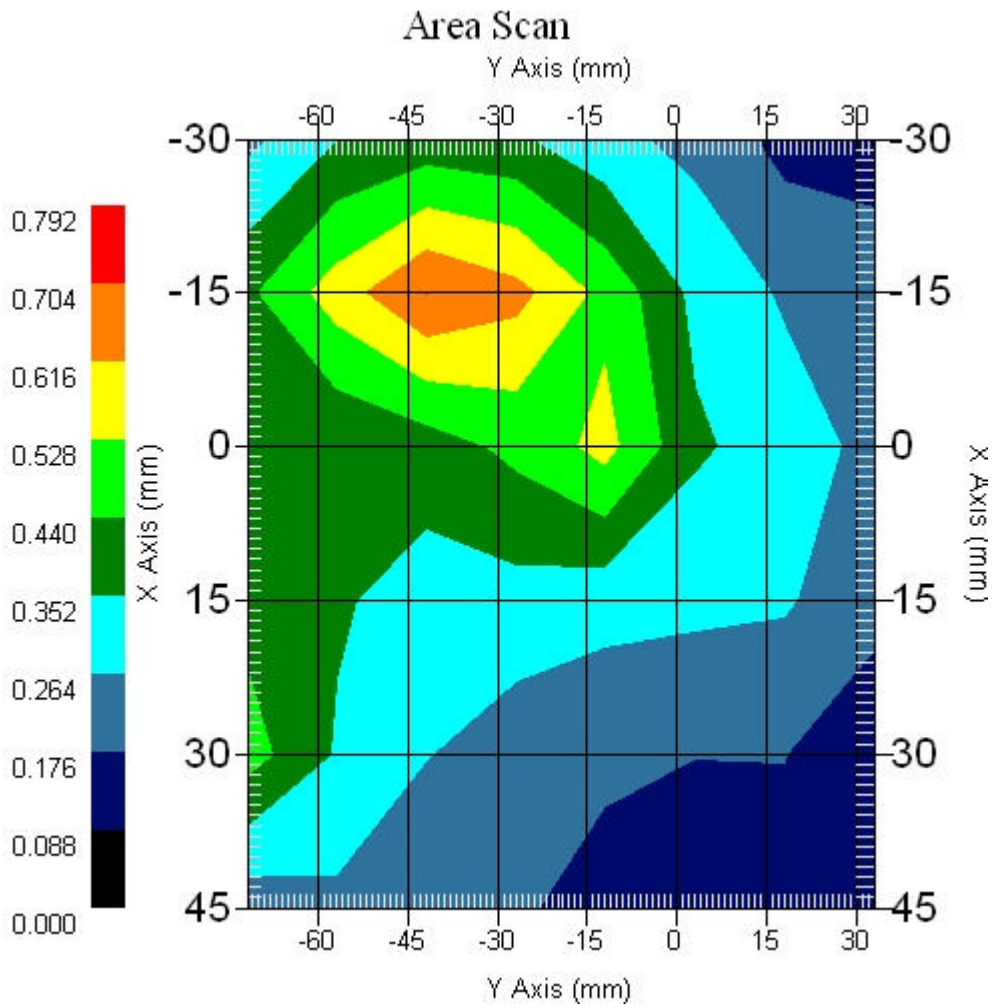
Measurement Data

Crest Factor : 1
Scan Type : Complete
Area Scan : 6x8x1 : Measurement x=15mm, y=15mm, z=4mm
Zoom Scan : 9x9x13 : Measurement x=4mm, y=4mm, z=2.5mm

Other Data

DUT Position : Touch
Separation : 0
Channel : Mid - 5785MHz

Power Drift-Start : 0.361 W/kg
Power Drift-Finish: 0.371 W/kg
Power Drift (%) : 2.711
Picture :



1 gram SAR value : 0.702 W/kg
10 gram SAR value : 0.501 W/kg
Area Scan Peak SAR : 0.706 W/kg
Zoom Scan Peak SAR : 1.020 W/kg

■ 5785 MHz, EUT Position: Laptop, 836 EGSM

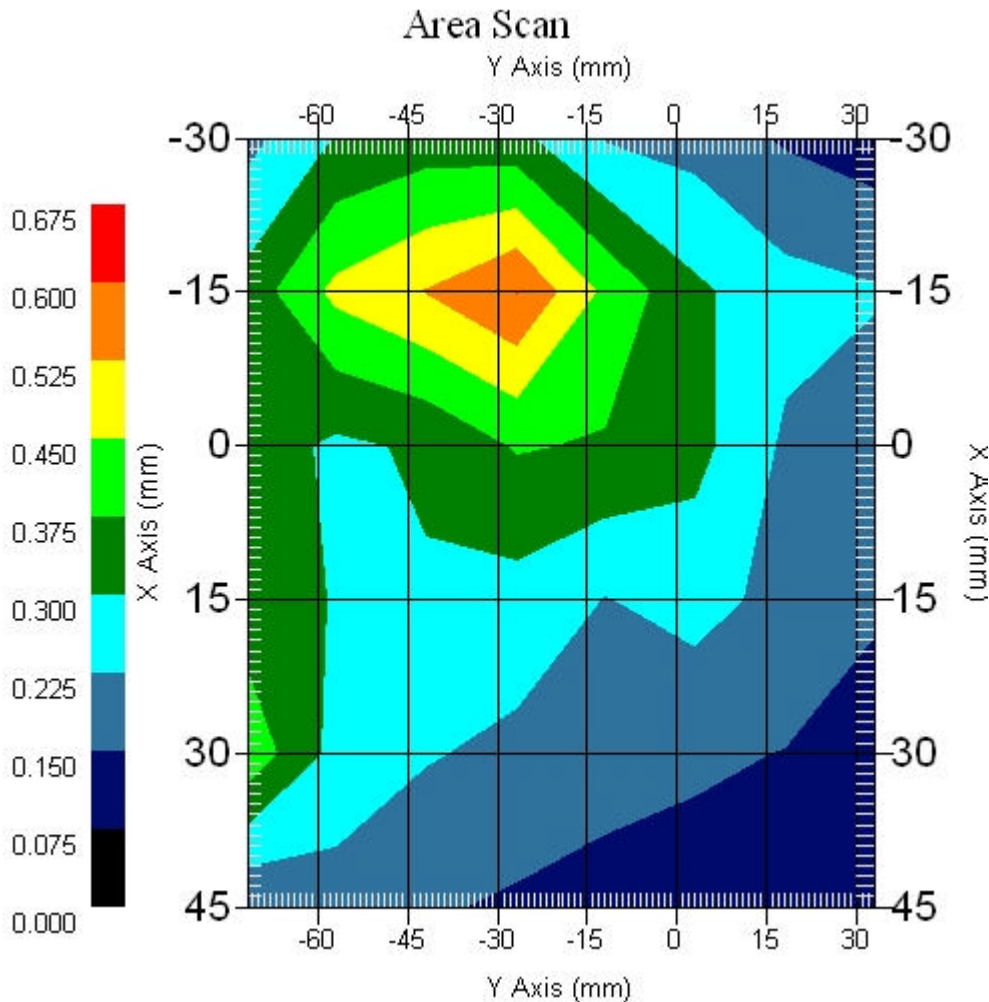
Measurement Data

Crest Factor : 1
Scan Type : Complete
Area Scan : 6x8x1 : Measurement x=15mm, y=15mm, z=4mm
Zoom Scan : 9x9x13 : Measurement x=4mm, y=4mm, z=2.5mm

Other Data

DUT Position : Touch
Separation : 0
Channel : Mid - 5785MHz

Power Drift-Start : 0.312 W/kg
Power Drift-Finish: 0.313 W/kg
Power Drift (%) : 3.205
Picture :



1 gram SAR value : 0.532 W/kg
10 gram SAR value : 0.379 W/kg
Area Scan Peak SAR : 0.601 W/kg
Zoom Scan Peak SAR : 0.870 W/kg

■ **5785 MHz, EUT Position: Tablet, PL, 836 EGSM**

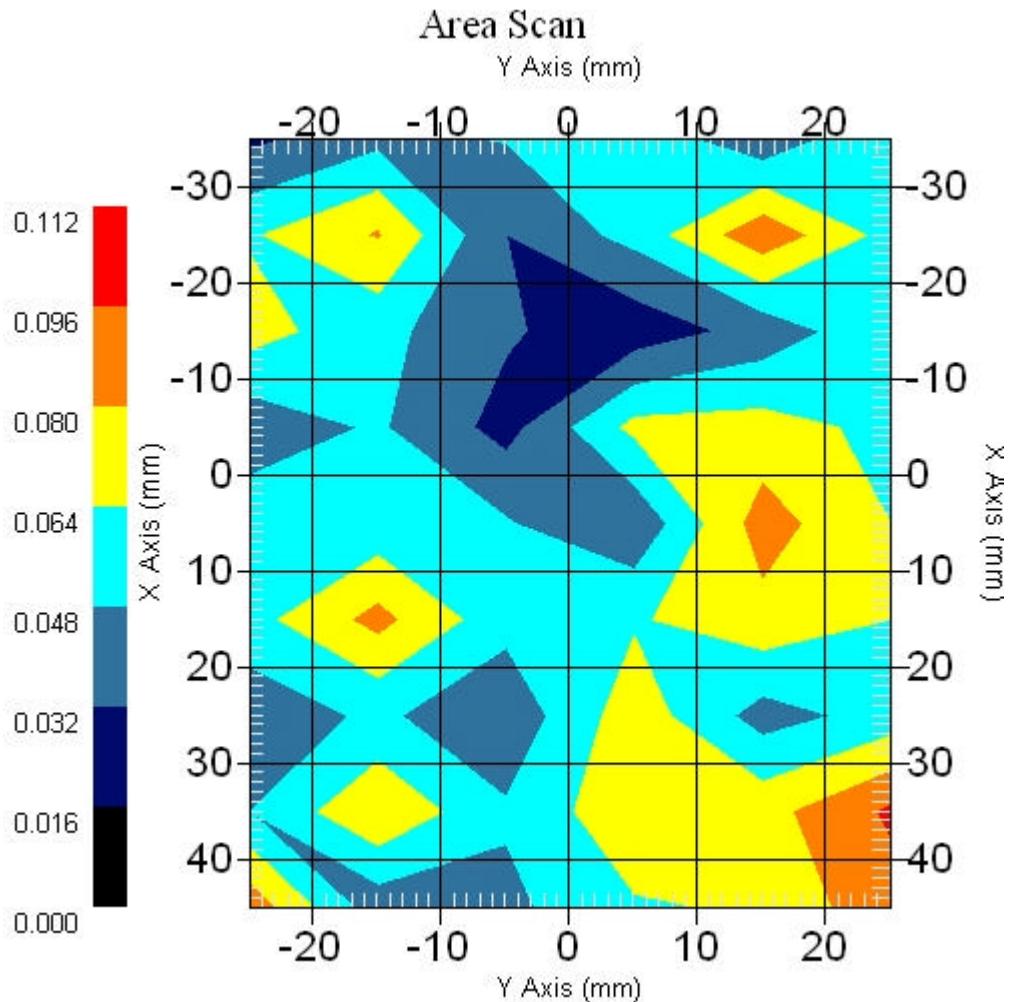
Measurement Data

Crest Factor : 1
Scan Type : Complete
Area Scan : 9x6x1 : Measurement x=10mm, y=10mm, z=4mm
Zoom Scan : 9x9x13 : Measurement x=4mm, y=4mm, z=2.5mm

Other Data

DUT Position : Touch
Separation : 0
Channel : Mid - 5785MHz

Power Drift-Start : 0.099 W/kg
Power Drift-Finish: 0.101 W/kg
Power Drift (%) : 2.020
Picture :



1 gram SAR value : 0.135 W/kg
10 gram SAR value : 0.101 W/kg
Area Scan Peak SAR : 0.098 W/kg
Zoom Scan Peak SAR : 0.190 W/kg

■ 5785 MHz, EUT Position: Tablet, PP, 836 EGSM

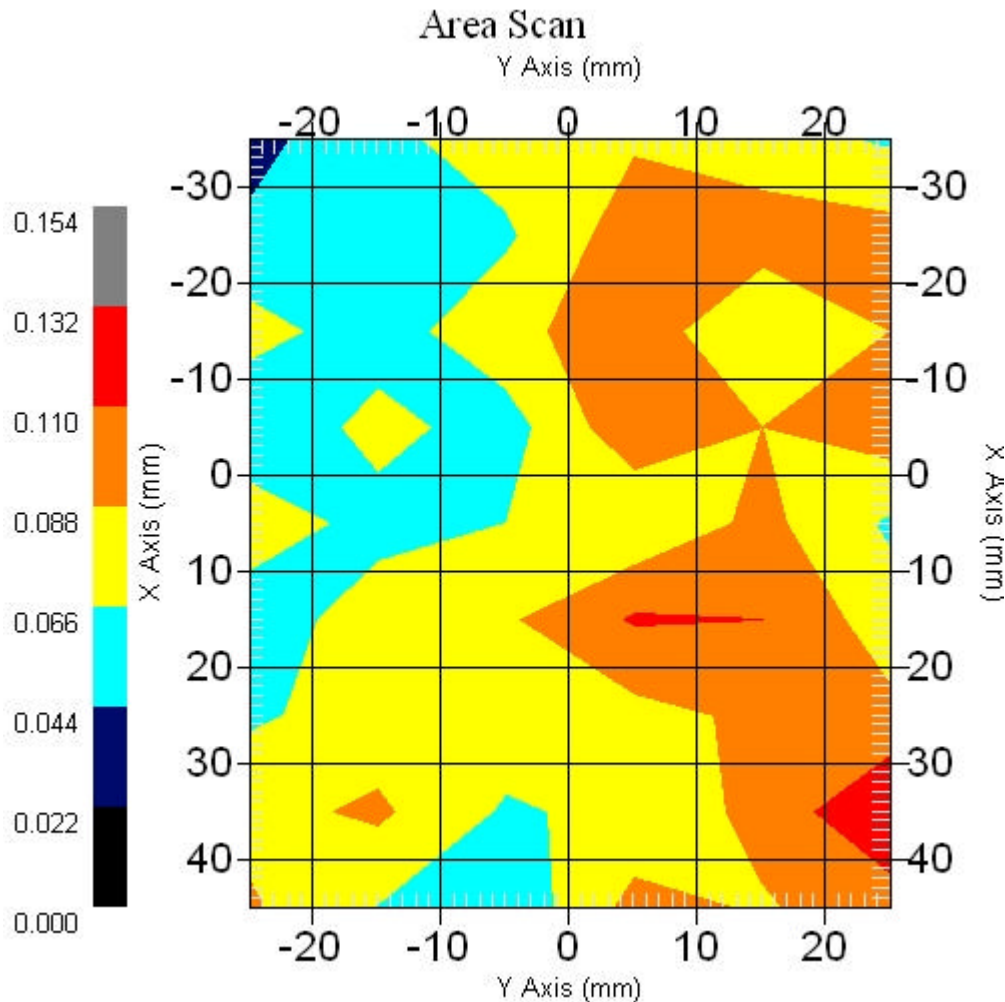
Measurement Data

Crest Factor : 1
Scan Type : Complete
Area Scan : 9x6x1 : Measurement x=10mm, y=10mm, z=4mm
Zoom Scan : 9x9x13 : Measurement x=4mm, y=4mm, z=2.5mm

Other Data

DUT Position : Touch
Separation : 0
Channel : Mid - 5785

Power Drift-Start : 0.085 W/kg
Power Drift-Finish: 0.082 W/kg
Power Drift (%) : -3.633
Picture :



1 gram SAR value : 0.189 W/kg
10 gram SAR value : 0.134 W/kg
Area Scan Peak SAR : 0.132 W/kg
Zoom Scan Peak SAR : 0.430 W/kg

■ 5785 MHz, EUT Position: Tablet, SL, 836 EGSM

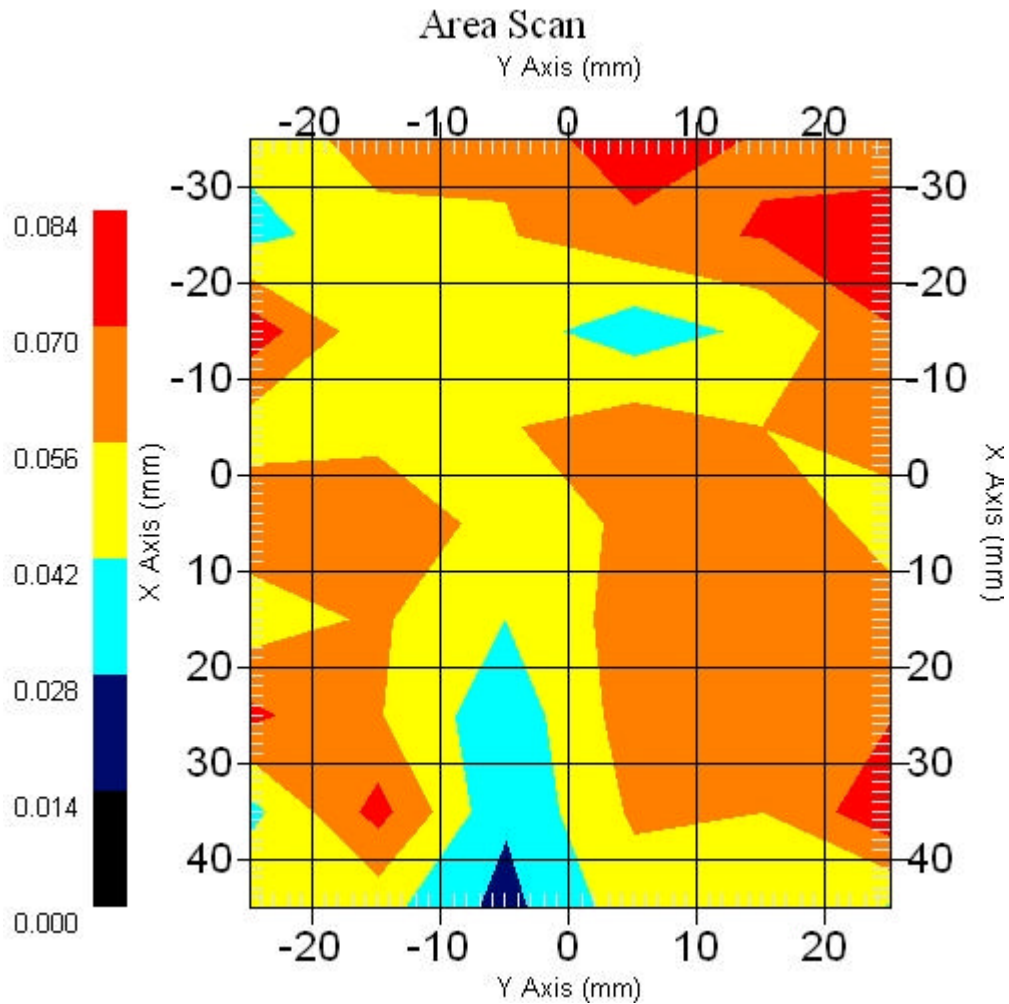
Measurement Data

Crest Factor : 1
Scan Type : Complete
Area Scan : 9x6x1 : Measurement x=10mm, y=10mm, z=4mm
Zoom Scan : 9x9x13 : Measurement x=4mm, y=4mm, z=2.5mm

Other Data

DUT Position : Touch
Separation : 0
Channel : Mid - 5785MHz

Power Drift-Start : 0.062 W/kg
Power Drift-Finish: 0.059 W/kg
Power Drift (%) : -4.838
Picture :



1 gram SAR value : 0.128 W/kg
10 gram SAR value : 0.086 W/kg
Area Scan Peak SAR : 0.082 W/kg
Zoom Scan Peak SAR : 0.230 W/kg

■ **5785 MHz, EUT Position: Tablet, SP, 836 EGSM**

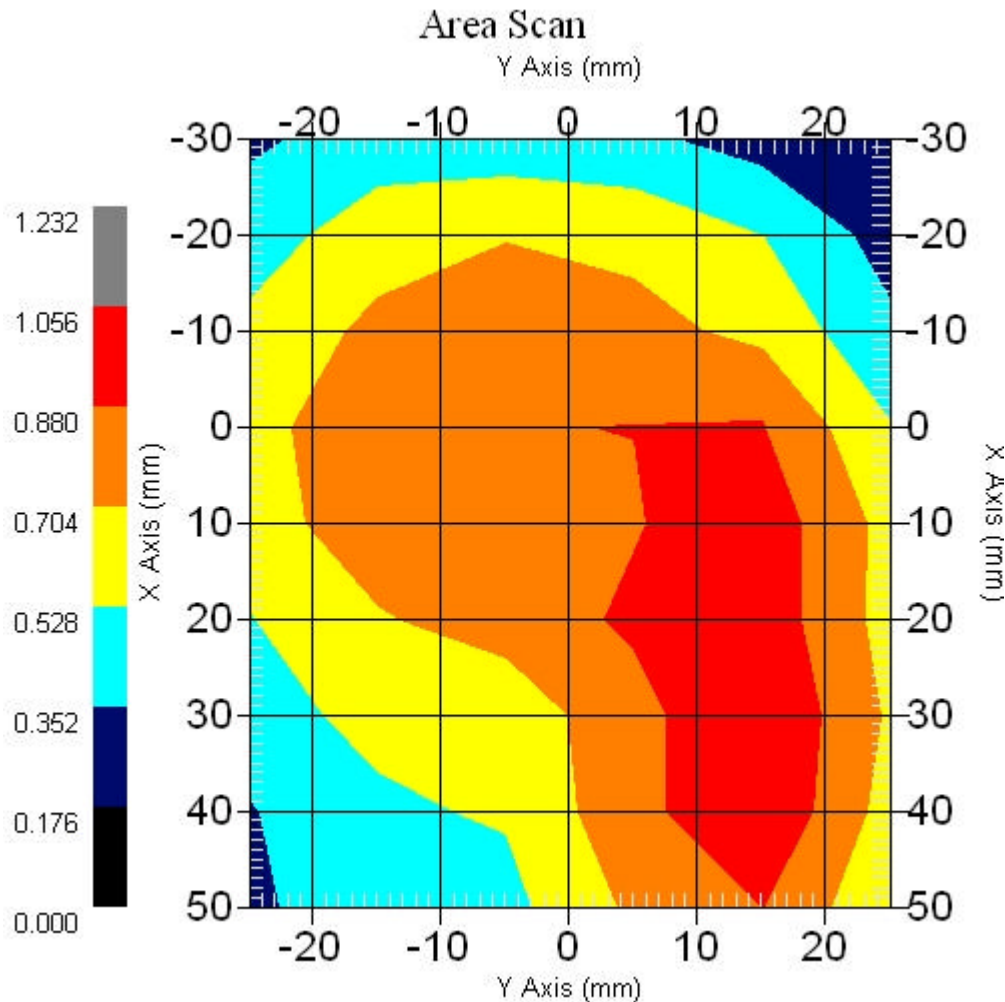
Measurement Data

Crest Factor : 1
Scan Type : Complete
Area Scan : 9x6x1 : Measurement x=10mm, y=10mm, z=4mm
Zoom Scan : 9x9x13 : Measurement x=4mm, y=4mm, z=2.5mm

Other Data

DUT Position : Touch
Separation : 0
Channel : Mid - 5785

Power Drift-Start : 0.927 W/kg
Power Drift-Finish: 0.927 W/kg
Power Drift (%) : 0.002
Picture :



1 gram SAR value : 1.006 W/kg
10 gram SAR value : 0.736 W/kg
Area Scan Peak SAR : 1.056 W/kg
Zoom Scan Peak SAR : 1.451 W/kg

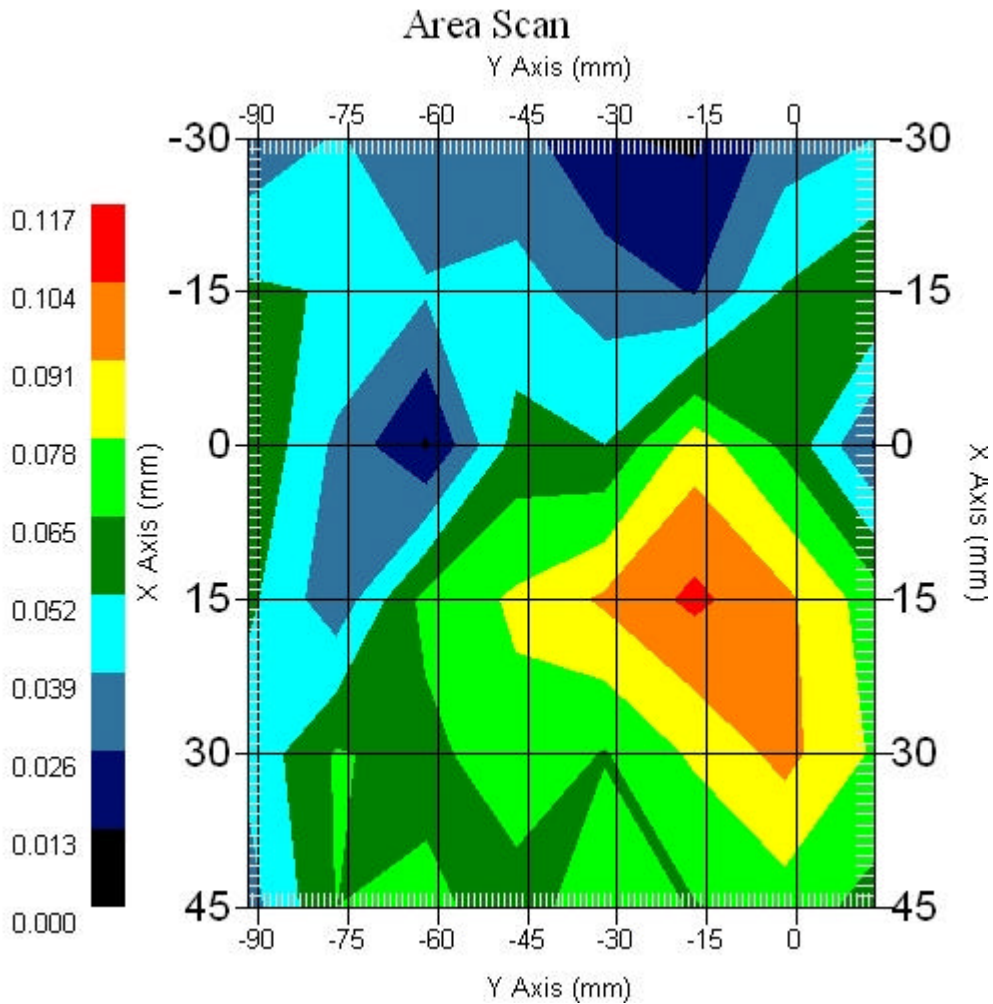
■ 5785 MHz only, EUT Position: Laptop Main

Measurement Data

Crest Factor : 1
Scan Type : Complete
Area Scan : 6x8x1 : Measurement x=15mm, y=15mm, z=4mm
Zoom Scan : 9x9x13 : Measurement x=4mm, y=4mm, z=2.5mm

DUT Position : Touch
Separation : 0
Channel : Mid - 5785MHz

Power Drift-Start : 0.083 W/kg
Power Drift-Finish: 0.080 W/kg
Power Drift (%) : -3.614



1 gram SAR value : 0.103 W/kg
10 gram SAR value : 0.078 W/kg
Area Scan Peak SAR : 0.107 W/kg
Zoom Scan Peak SAR : 0.170 W/kg

■ 5785MHz only, EUT Position: Laptop Aux.

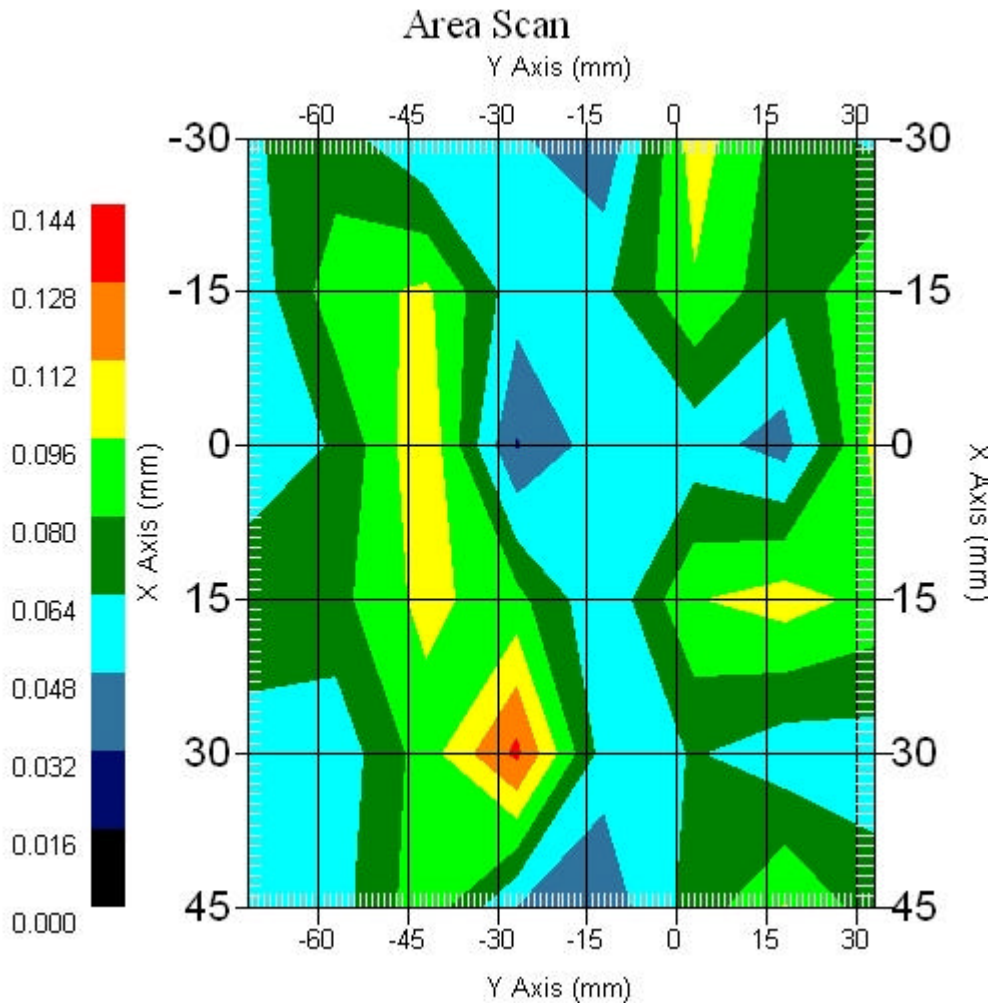
Measurement Data

Crest Factor : 1
Scan Type : Complete
Area Scan : 6x8x1 : Measurement x=15mm, y=15mm, z=4mm
Zoom Scan : 9x9x13 : Measurement x=4mm, y=4mm, z=2.5mm

Other Data

DUT Position : Touch
Separation : 0
Channel : Mid - 5785MHz

Power Drift-Start : 0.056 W/kg
Power Drift-Finish: 0.057 W/kg
Power Drift (%) : 1.785



1 gram SAR value : 0.099 W/kg
10 gram SAR value : 0.078 W/kg
Area Scan Peak SAR : 0.132 W/kg
Zoom Scan Peak SAR : 0.223 W/kg

■ 5785MHz, EUT Position: Laptop , 836 UMTS only

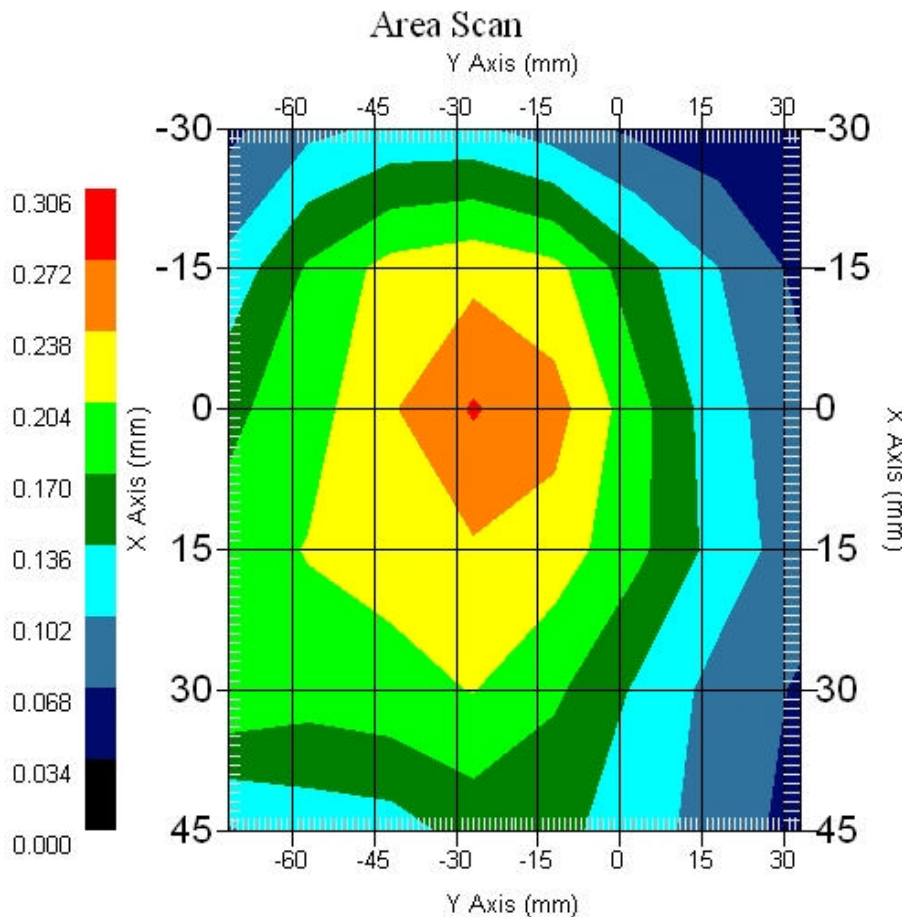
Measurement Data

Crest Factor : 1
Scan Type : Complete
Area Scan : 6x8x1 : Measurement x=15mm, y=15mm, z=4mm
Zoom Scan : 5x5x8 : Measurement x=8mm, y=8mm, z=4mm

Other Data

DUT Position : Touch
Separation : 0
Channel : Mid - 836MHz

Power Drift-Start : 0.207 W/kg
Power Drift-Finish: 0.197 W/kg
Power Drift (%) : -4.830
Picture :



1 gram SAR value : 0.260 W/kg
10 gram SAR value : 0.173 W/kg
Area Scan Peak SAR : 0.275 W/kg
Zoom Scan Peak SAR : 0.490 W/kg

■ **5785 MHz, EUT Position: Tablet, PL, 836 UMTS**

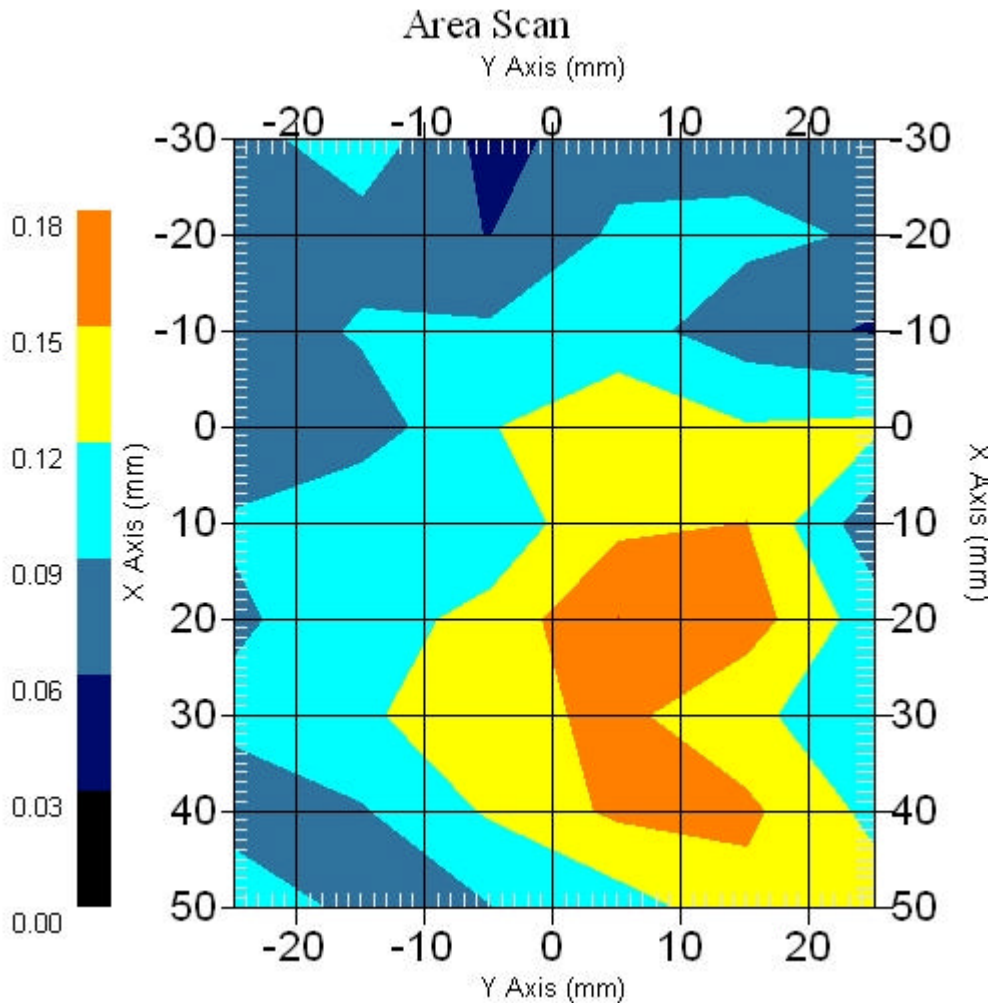
Measurement Data

Crest Factor : 1
Scan Type : Complete
Area Scan : 9x6x1 : Measurement x=10mm, y=10mm, z=4mm
Zoom Scan : 9x9x13 : Measurement x=4mm, y=4mm, z=2.5mm

Other Data

DUT Position : Touch
Separation : 0
Channel : Mid - 5785MHz

Power Drift-Start : 0.167 W/kg
Power Drift-Finish: 0.161 W/kg
Power Drift (%) : -3.392
Picture :



1 gram SAR value : 0.178 W/kg
10 gram SAR value : 0.147 W/kg
Area Scan Peak SAR : 0.180 W/kg
Zoom Scan Peak SAR : 0.290 W/kg

■ **5785 MHz, EUT Position: Tablet, PP, 836 UMTS**

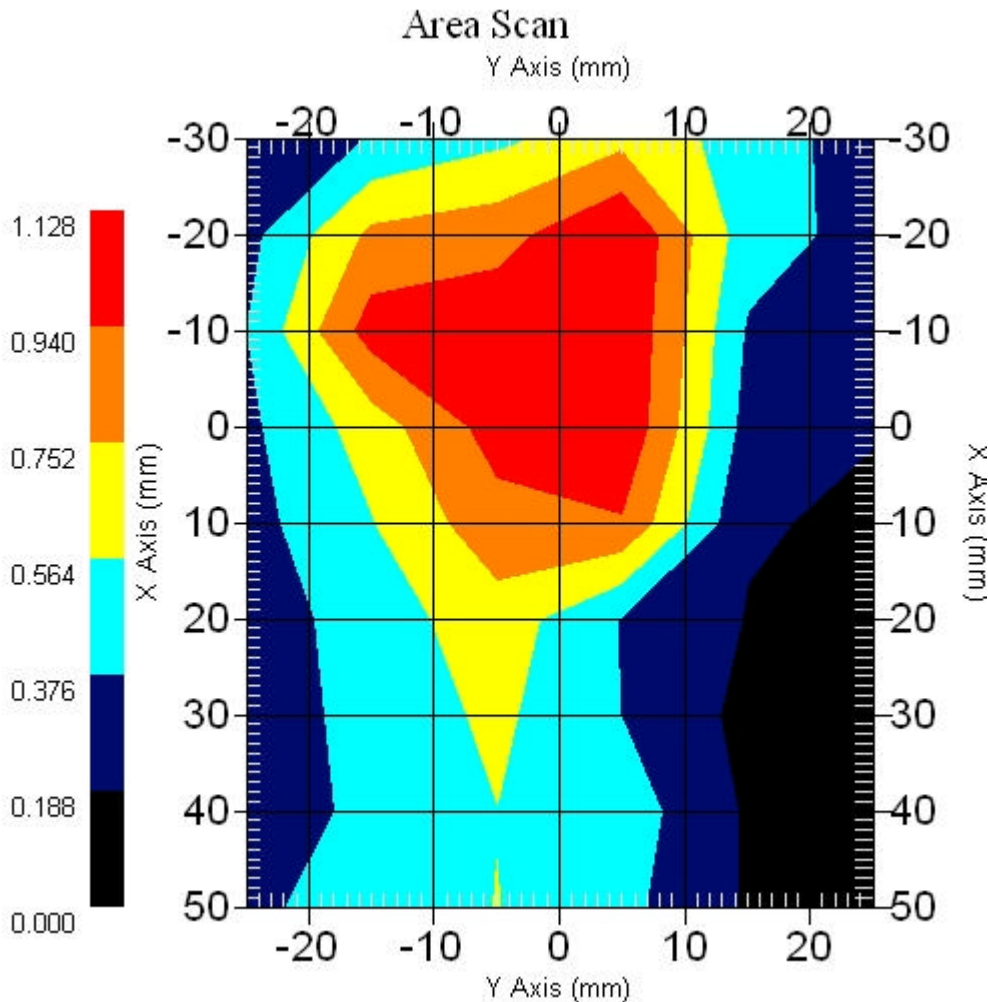
Measurement Data

Crest Factor : 1
Scan Type : Complete
Area Scan : 9x6x1 : Measurement x=10mm, y=10mm, z=4mm
Zoom Scan : 9x9x13 : Measurement x=4mm, y=4mm, z=2.5mm

Other Data

DUT Position : Touch
Separation : 0
Channel : Mid - 5785MHz

Power Drift-Start : 1.204 W/kg
Power Drift-Finish: 1.208 W/kg
Power Drift (%) : 1.666
Picture :



1 gram SAR value : 1.083 W/kg
10 gram SAR value : 0.656 W/kg
Area Scan Peak SAR : 1.127 W/kg
Zoom Scan Peak SAR : 1.761 W/kg

■ 5785 MHz, EUT Position: Tablet, SL, 836 UMTS

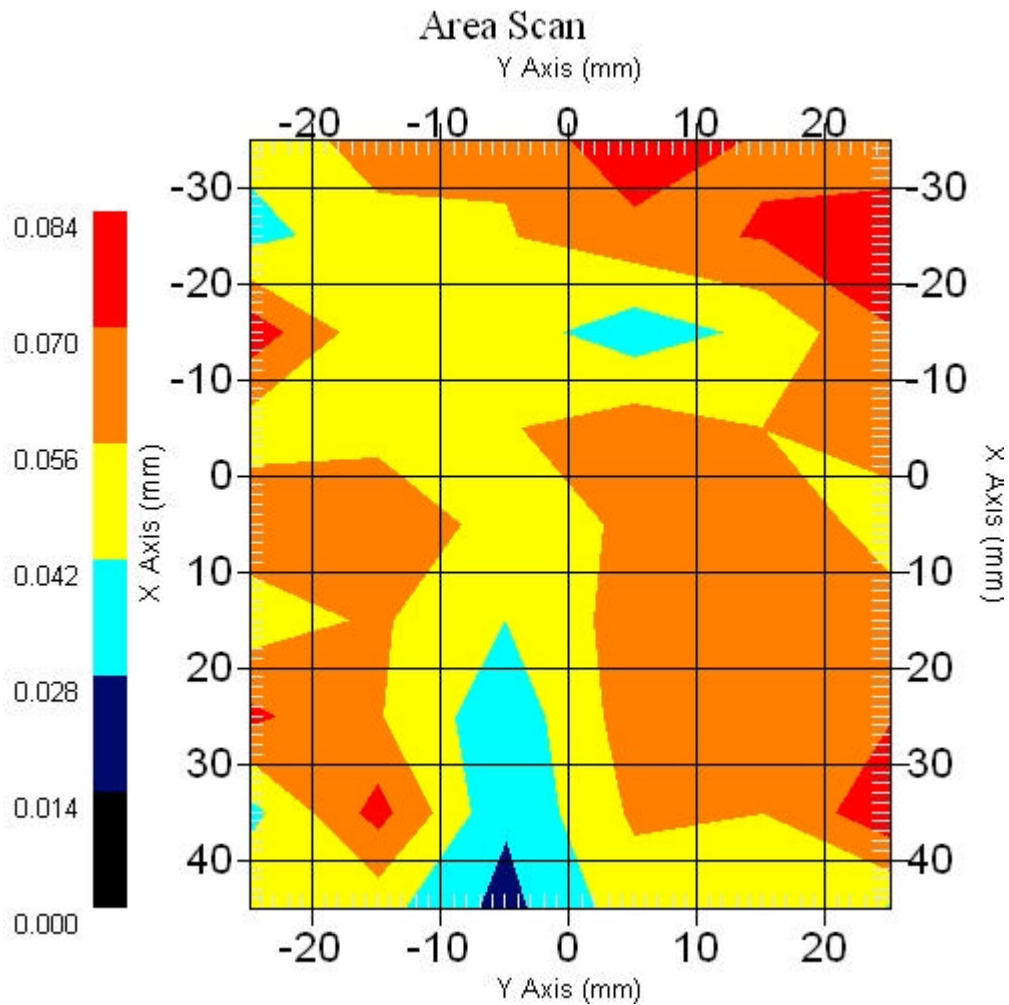
Measurement Data

Crest Factor : 1
Scan Type : Complete
Area Scan : 9x6x1 : Measurement x=10mm, y=10mm, z=4mm
Zoom Scan : 9x9x13 : Measurement x=4mm, y=4mm, z=2.5mm

Other Data

DUT Position : Touch
Separation : 0
Channel : Mid - 5785MHz

Power Drift-Start : 0.062 W/kg
Power Drift-Finish: 0.059 W/kg
Power Drift (%) : -4.838
Picture :



1 gram SAR value : 0.128 W/kg
10 gram SAR value : 0.086 W/kg
Area Scan Peak SAR : 0.082 W/kg
Zoom Scan Peak SAR : 0.230 W/kg

■ 5785 MHz Only, EUT Position: Tablet, SP

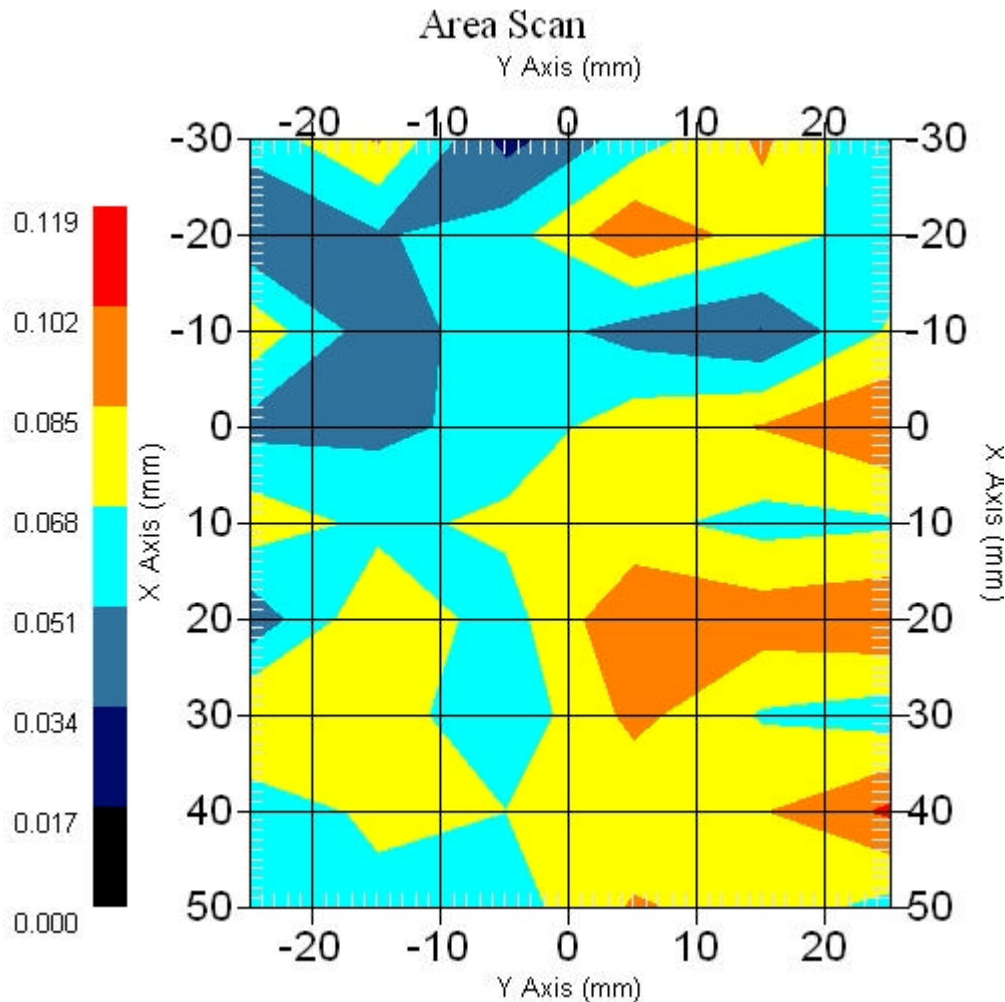
Measurement Data

Crest Factor : 1
Scan Type : Complete
Area Scan : 9x6x1 : Measurement x=10mm, y=10mm, z=4mm
Zoom Scan : 9x9x13 : Measurement x=4mm, y=4mm, z=2.5mm

Other Data

DUT Position : Touch
Separation : 0
Channel : Mid - 5785MHz

Power Drift-Start : 0.095 W/kg
Power Drift-Finish: 0.097 W/kg
Power Drift (%) : 2.105
Picture :



1 gram SAR value : 0.183 W/kg
10 gram SAR value : 0.135 W/kg
Area Scan Peak SAR : 0.105 W/kg
Zoom Scan Peak SAR : 0.310 W/kg

■ **EUT Position: Tablet, SP, 836 UMTS Only**

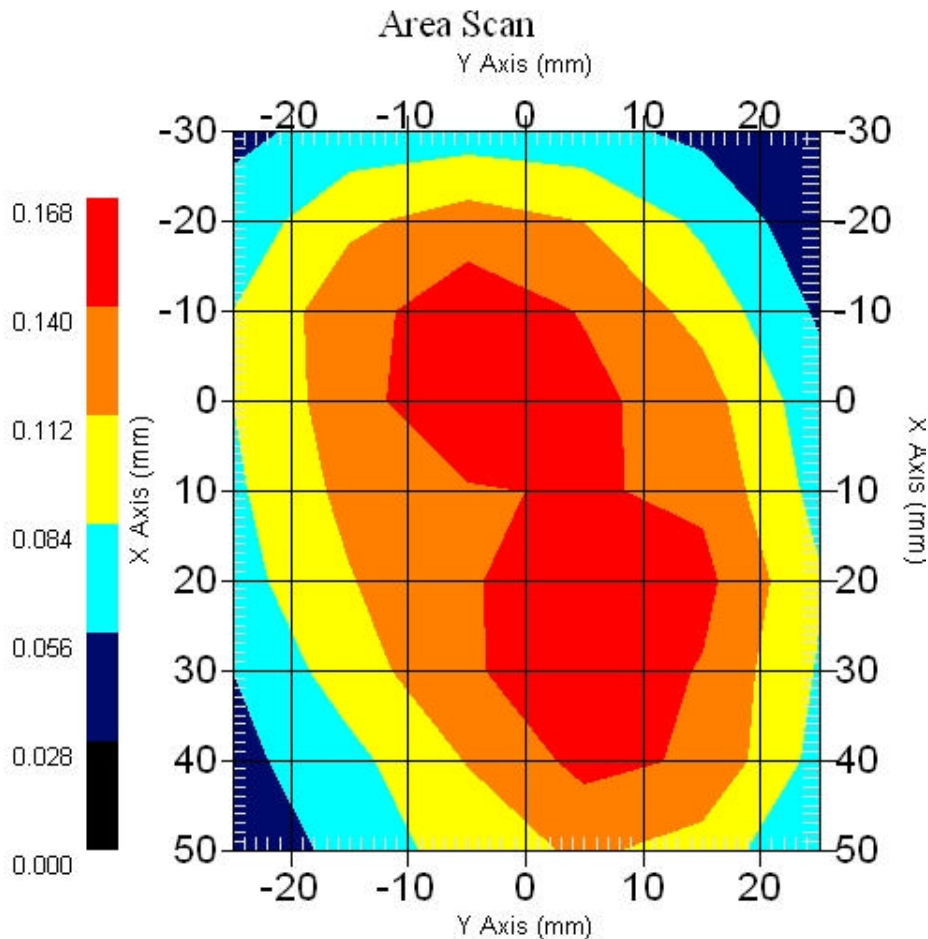
Measurement Data

Crest Factor : 1
Scan Type : Complete
Area Scan : 9x6x1 : Measurement x=10mm, y=10mm, z=4mm
Zoom Scan : 9x9x13 : Measurement x=4mm, y=4mm, z=2.5mm

Other Data

DUT Position : Touch
Separation : 0
Channel : Mid - 5260MHz

Power Drift-Start : 0.158 W/kg
Power Drift-Finish: 0.158 W/kg
Power Drift (%) : -0.112
Picture :



1 gram SAR value : 0.153 W/kg
10 gram SAR value : 0.099 W/kg
Area Scan Peak SAR : 0.168 W/kg
Zoom Scan Peak SAR : 0.250 W/kg

■ 5785 MHz, EUT Position: Tablet, SP, 1880 GSM

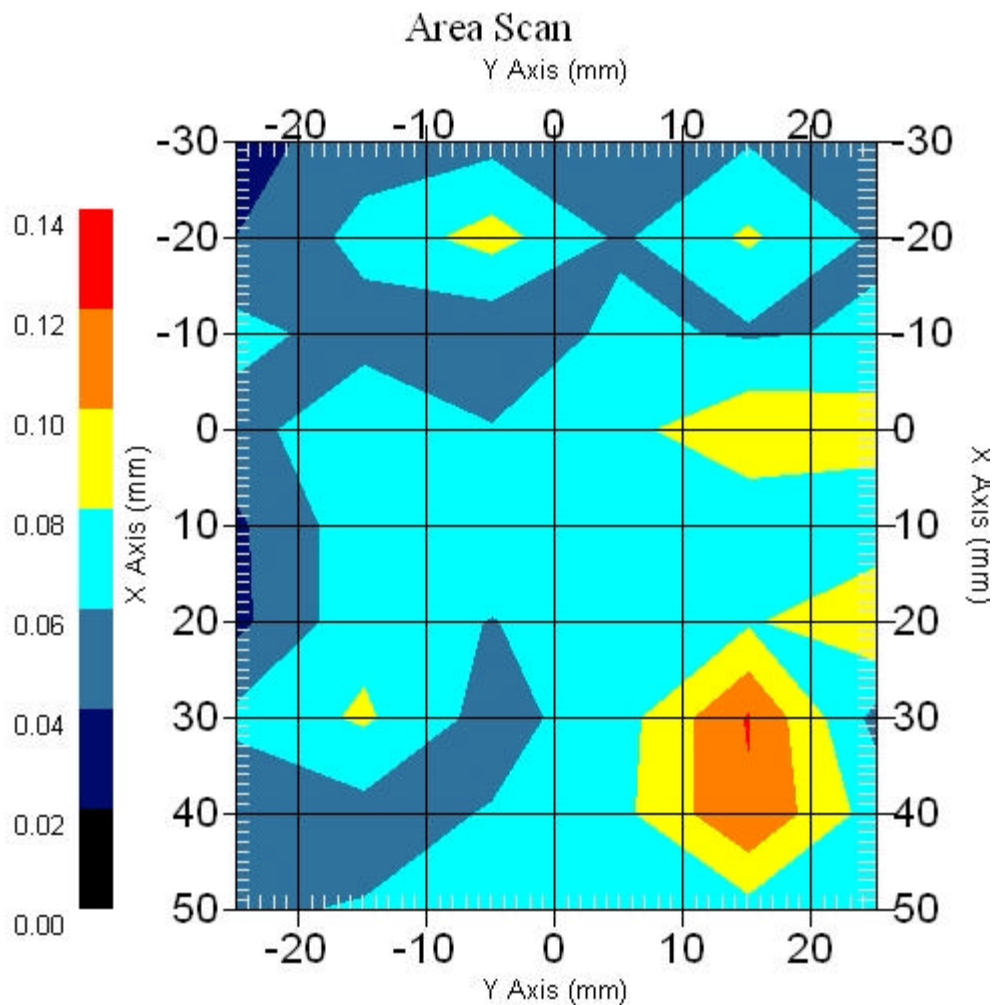
Measurement Data

Crest Factor : 1
Scan Type : Complete
Area Scan : 9x6x1 : Measurement x=10mm, y=10mm, z=4mm
Zoom Scan : 5x5x11 : Measurement x=8mm, y=8mm, z=3mm

Other Data

DUT Position : Touch
Separation : 0
Channel : Mid - 5825MHz

Power Drift-Start : 0.073 W/kg
Power Drift-Finish: 0.071 W/kg
Power Drift (%) : -3.435
Picture : (No picture)



1 gram SAR value : 0.133 W/kg
10 gram SAR value : 0.126 W/kg
Area Scan Peak SAR : 0.121 W/kg
Zoom Scan Peak SAR : 0.180 W/kg

■ **5785 MHz, EUT Position: Tablet, SP, 1880 GSM**

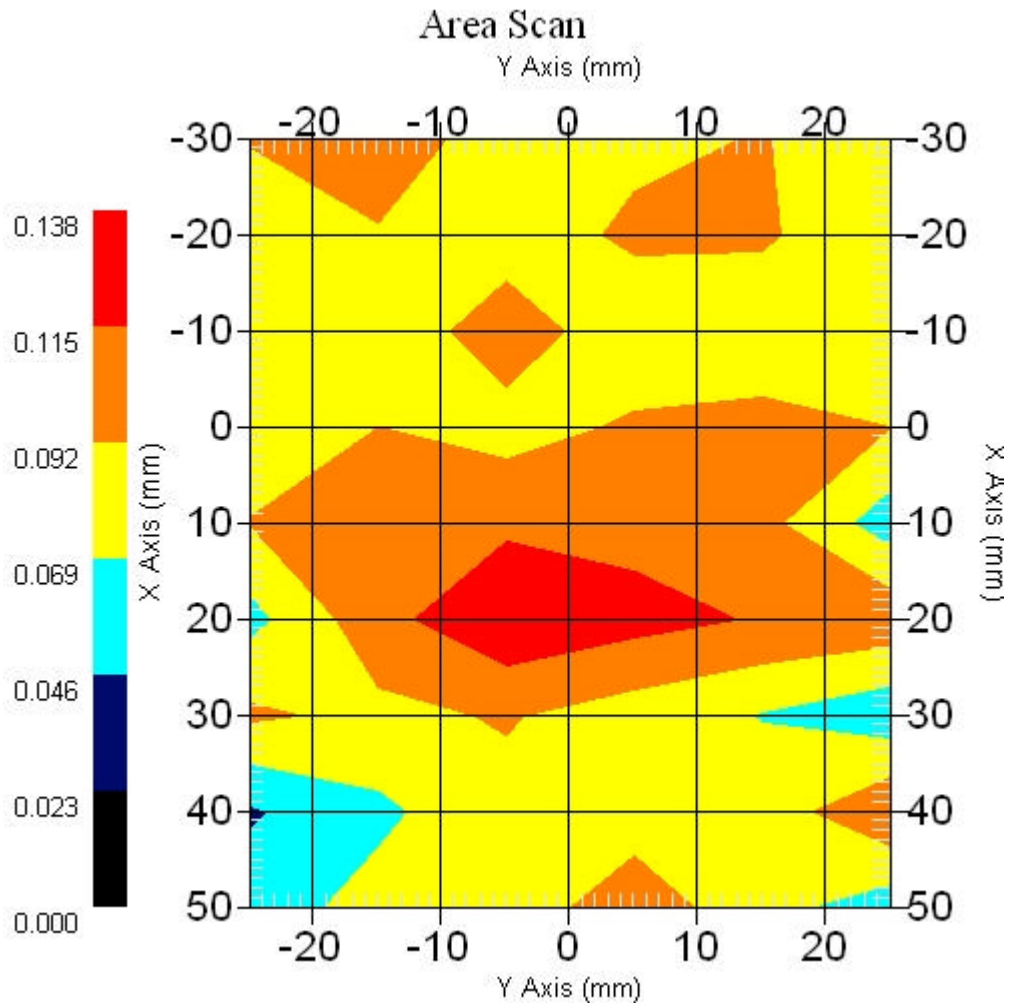
Measurement Data

Crest Factor : 1
Scan Type : Complete
Area Scan : 9x6x1 : Measurement x=10mm, y=10mm, z=4mm
Zoom Scan : 9x9x13 : Measurement x=4mm, y=4mm, z=2.5mm

Other Data

DUT Position : Touch
Separation : 0
Channel : Mid - 5785MHz

Power Drift-Start : 0.117 W/kg
Power Drift-Finish: 0.122 W/kg
Power Drift (%) : 4.273
Picture :



1 gram SAR value : 0.160 W/kg
10 gram SAR value : 0.116 W/kg
Area Scan Peak SAR : 0.135 W/kg
Zoom Scan Peak SAR : 0.430 W/kg

■ 5785 MHz, EUT Position: Tablet, SP, 1880 UMTS

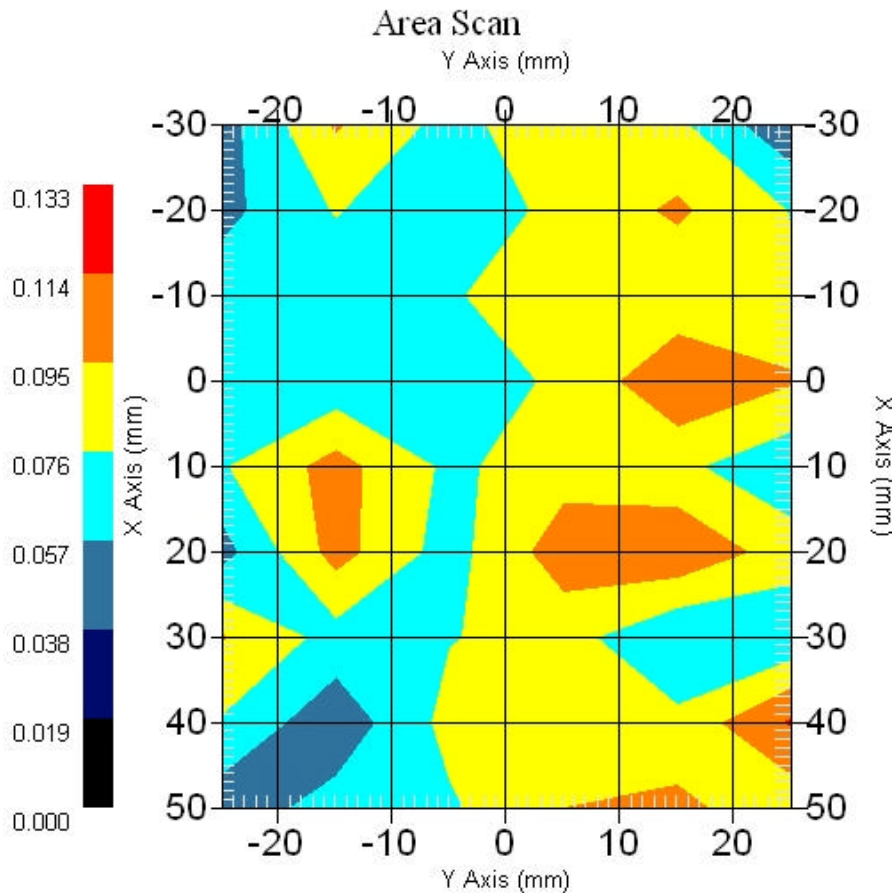
Measurement Data

Crest Factor : 1
Scan Type : Complete
Area Scan : 9x6x1 : Measurement x=10mm, y=10mm, z=4mm
Zoom Scan : 9x9x13 : Measurement x=4mm, y=4mm, z=2.5mm

Other Data

DUT Position : Touch
Separation : 0
Channel : Mid - 5825MHz

Power Drift-Start : 0.069 W/kg
Power Drift-Finish: 0.069 W/kg
Power Drift (%) : -0.002
Picture :

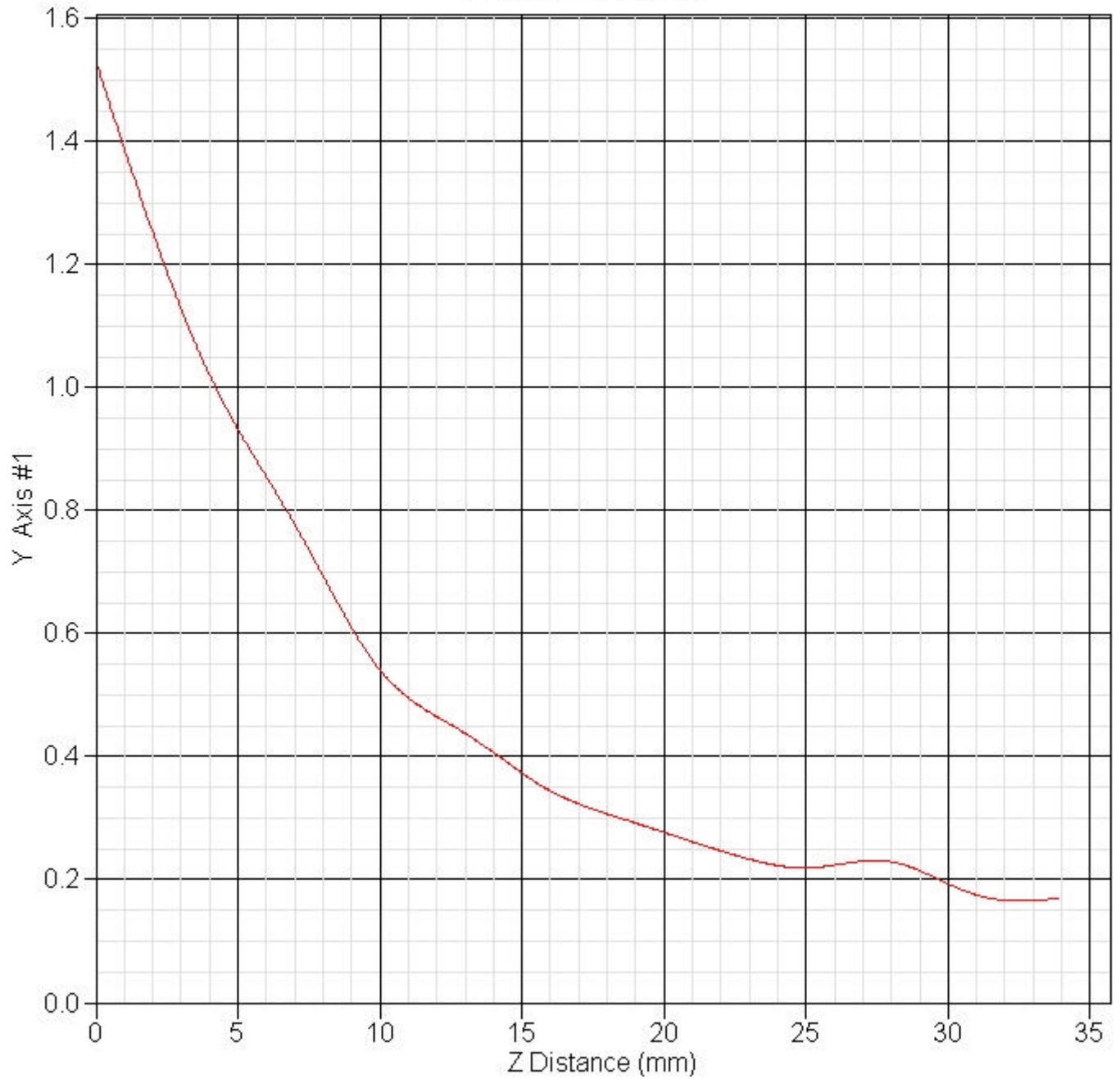


1 gram SAR value : 0.181 W/kg
10 gram SAR value : 0.176 W/kg
Area Scan Peak SAR : 0.116 W/kg
Zoom Scan Peak SAR : 0.340 W/kg

■ Z Axis 802.11a 5785 MHz, Position: Tablet SP, 836 GSM

SAR-Z Axis

at Hotspot x:20.20 y:-5.00



14.2 802.11a (5725 ~ 5850MHz) + WWAN Tosa (EV-DO) : FCCID N7N-MC5720 + Bluetooth

■ 5785 MHz, EUT Position: Laptop 836 EV-DO

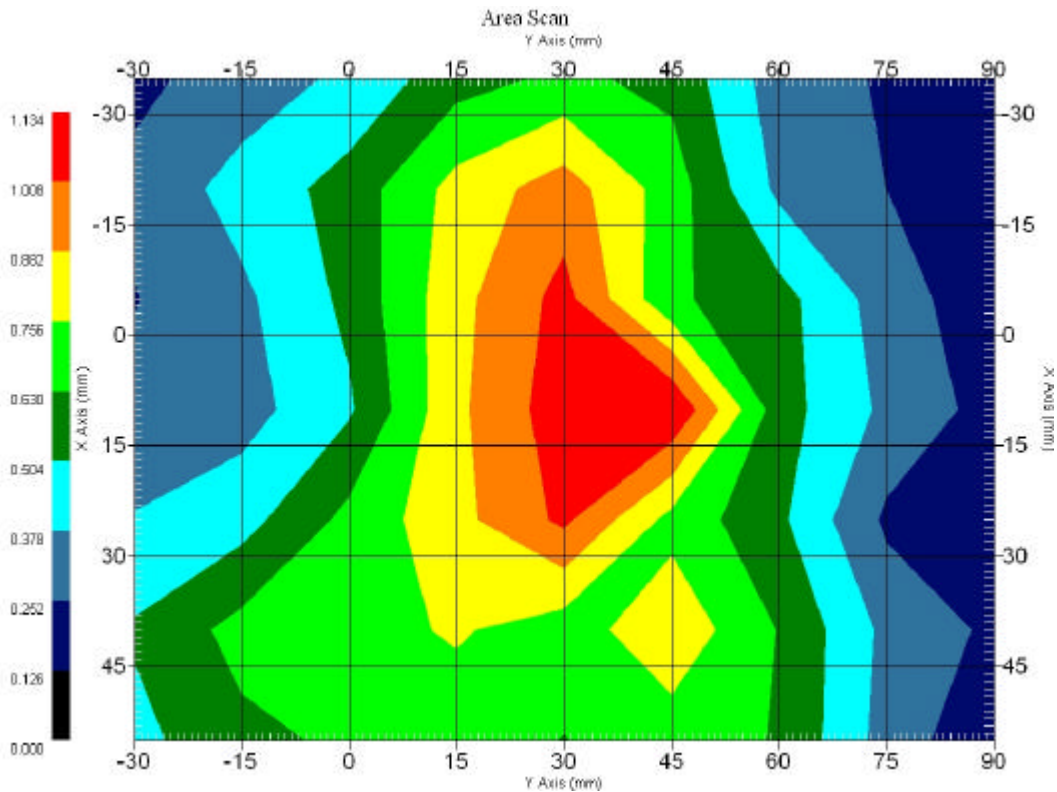
Measurement Data

Crest Factor : 1
 Scan Type : Complete
 Area Scan : 7x9x1 : Measurement x=15mm, y=15mm, z=4mm
 Zoom Scan : 9x9x13 : Measurement x=4mm, y=4mm, z=2.5mm

Other Data

DUT Position : Touch
 Separation : 0
 Channel : Mid - 526MHz

Power Drift-Start : 0.235 W/kg
 Power Drift-Finish: 0.235 W/kg
 Power Drift (%) : 0.021
 Picture :



1 gram SAR value : 1.080 W/kg
 10 gram SAR value : 0.937 W/kg
 Area Scan Peak SAR : 1.333 W/kg
 Zoom Scan Peak SAR : 1.641 W/kg

■ **5785 MHz Only, EUT Position: Laptop**

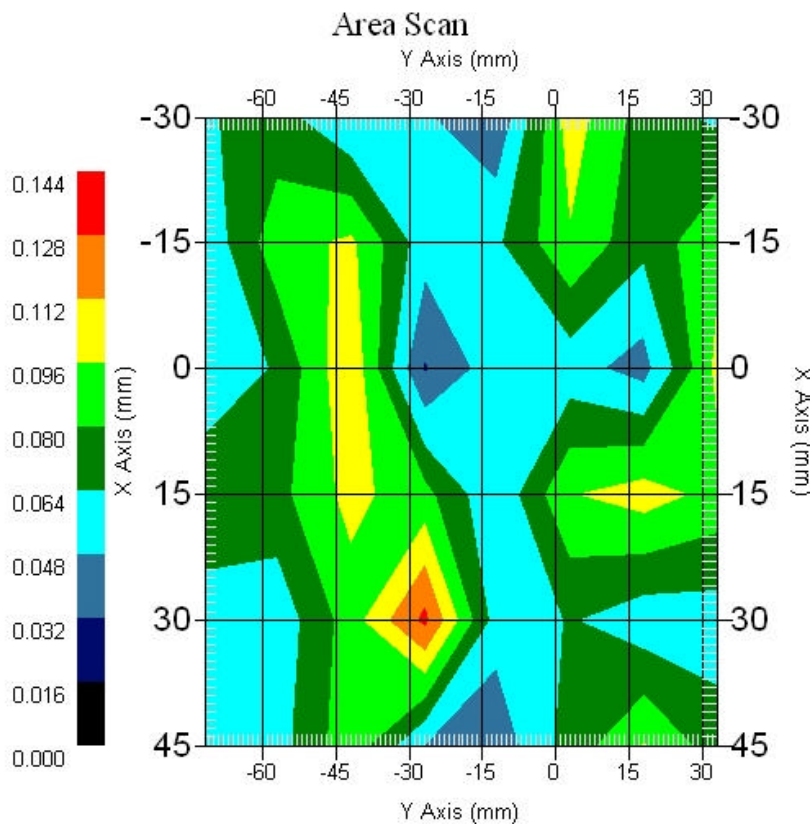
Measurement Data

Crest Factor : 1
Scan Type : Complete
Set-up Date : 25-Aug-2006
Set-up Time : 9:48:07 AM
Area Scan : 6x8x1 : Measurement x=15mm, y=15mm, z=4mm
Zoom Scan : 9x9x13 : Measurement x=4mm, y=4mm, z=2.5mm

Other Data

DUT Position : Touch
Separation : 0
Channel : Mid - 5785MHz

Power Drift-Start : 0.056 W/kg
Power Drift-Finish: 0.057 W/kg
Power Drift (%) : 1.785



1 gram SAR value : 0.099 W/kg
10 gram SAR value : 0.078 W/kg
Area Scan Peak SAR : 0.132 W/kg
Zoom Scan Peak SAR : 0.220 W/kg