

■ **EUT Position: Tablet, SP, 836 UMTS Only**

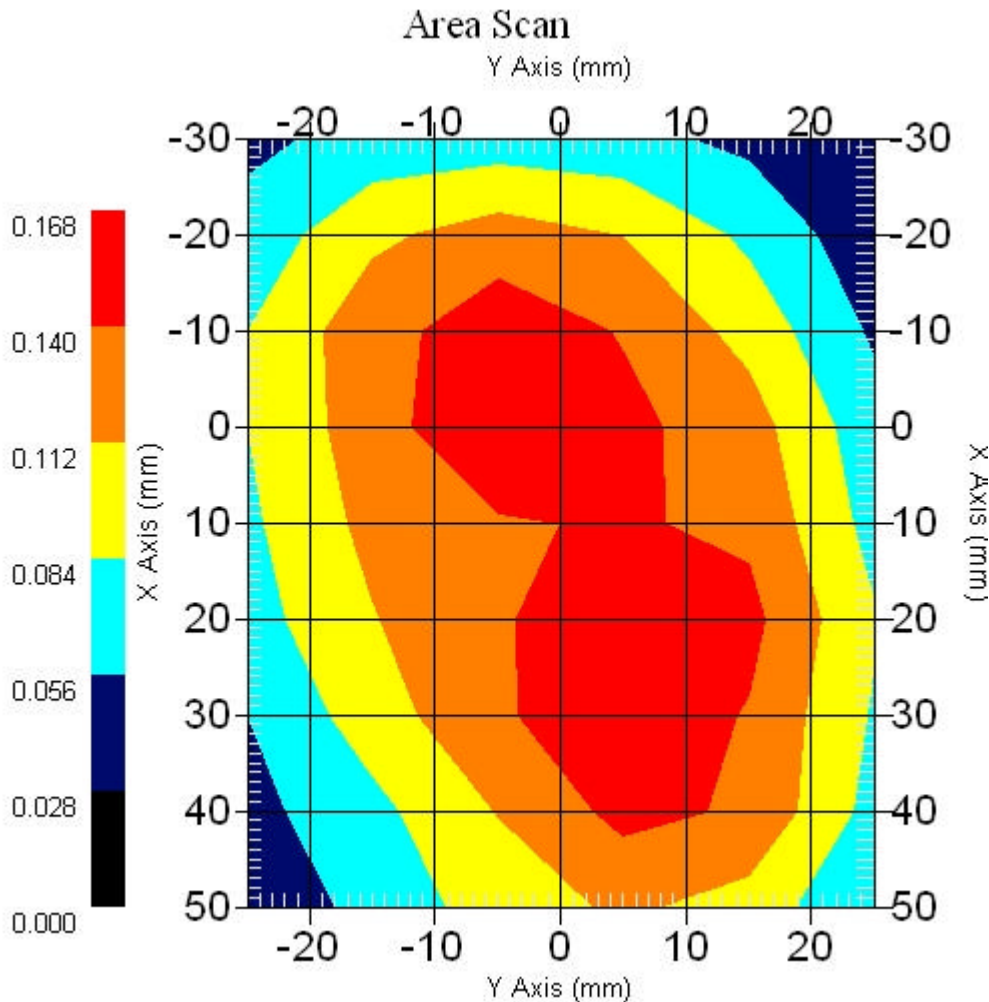
Measurement Data

Crest Factor : 1  
Scan Type : Complete  
Area Scan : 9x6x1 : Measurement x=10mm, y=10mm, z=4mm  
Zoom Scan : 9x9x13 : Measurement x=4mm, y=4mm, z=2.5mm

Other Data

DUT Position : Touch  
Separation : 0  
Channel : Mid - 5260MHz

Power Drift-Start : 0.158 W/kg  
Power Drift-Finish: 0.158 W/kg  
Power Drift (%) : -0.112  
Picture :



1 gram SAR value : 0.153 W/kg  
10 gram SAR value : 0.099 W/kg  
Area Scan Peak SAR : 0.168 W/kg  
Zoom Scan Peak SAR : 0.250 W/kg

■ 5260 MHz, EUT Position: Tablet, SP, 1880 GSM

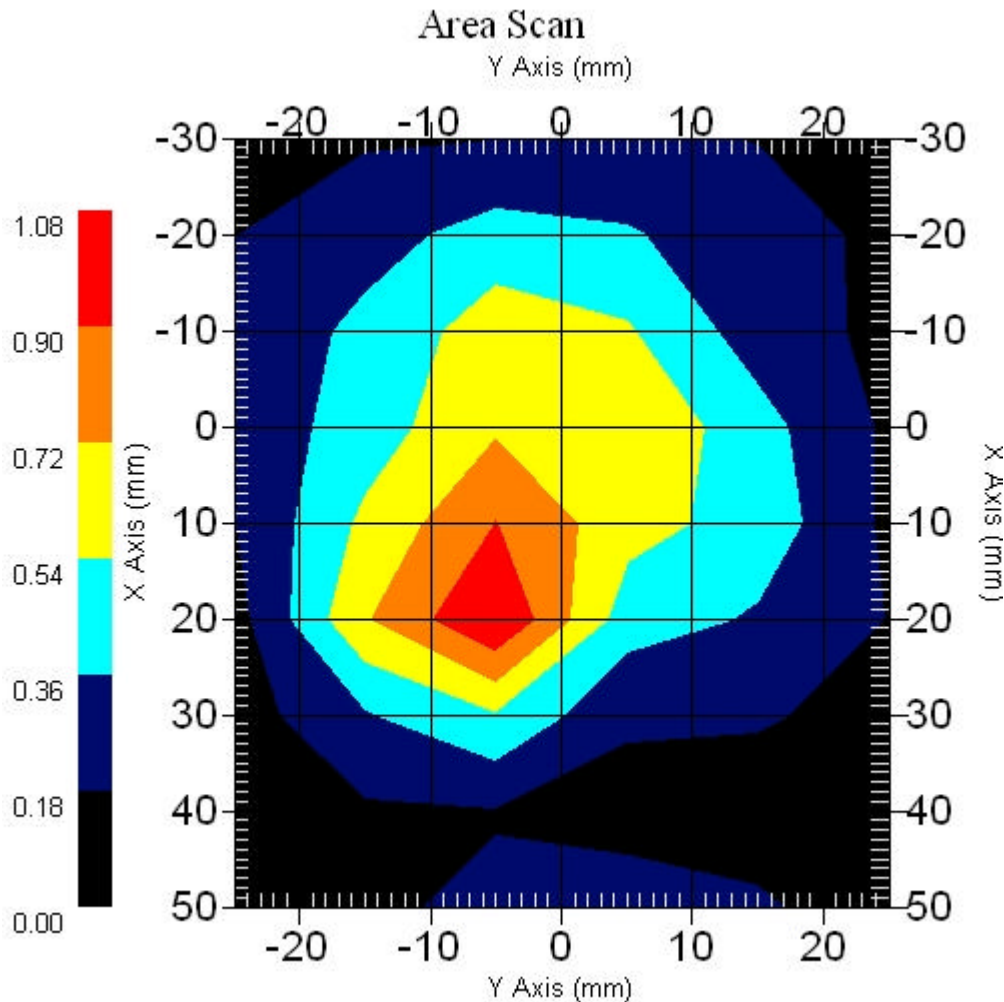
Measurement Data

Crest Factor : 1  
Scan Type : Complete  
Area Scan : 9x6x1 : Measurement x=10mm, y=10mm, z=4mm  
Zoom Scan : 9x9x13 : Measurement x=4mm, y=4mm, z=2.5mm

Other Data

DUT Position : Touch  
Separation : 0  
Channel : Mid - 5260MHz

Power Drift-Start : 0.839 W/kg  
Power Drift-Finish: 0.827 W/kg  
Power Drift (%) : -1.430  
Picture :



1 gram SAR value : 0.847 W/kg  
10 gram SAR value : 0.491 W/kg  
Area Scan Peak SAR : 1.079 W/kg  
Zoom Scan Peak SAR : 1.531 W/kg

■ **5260 MHz, EUT Position: Tablet, SP, 1880 GSM**

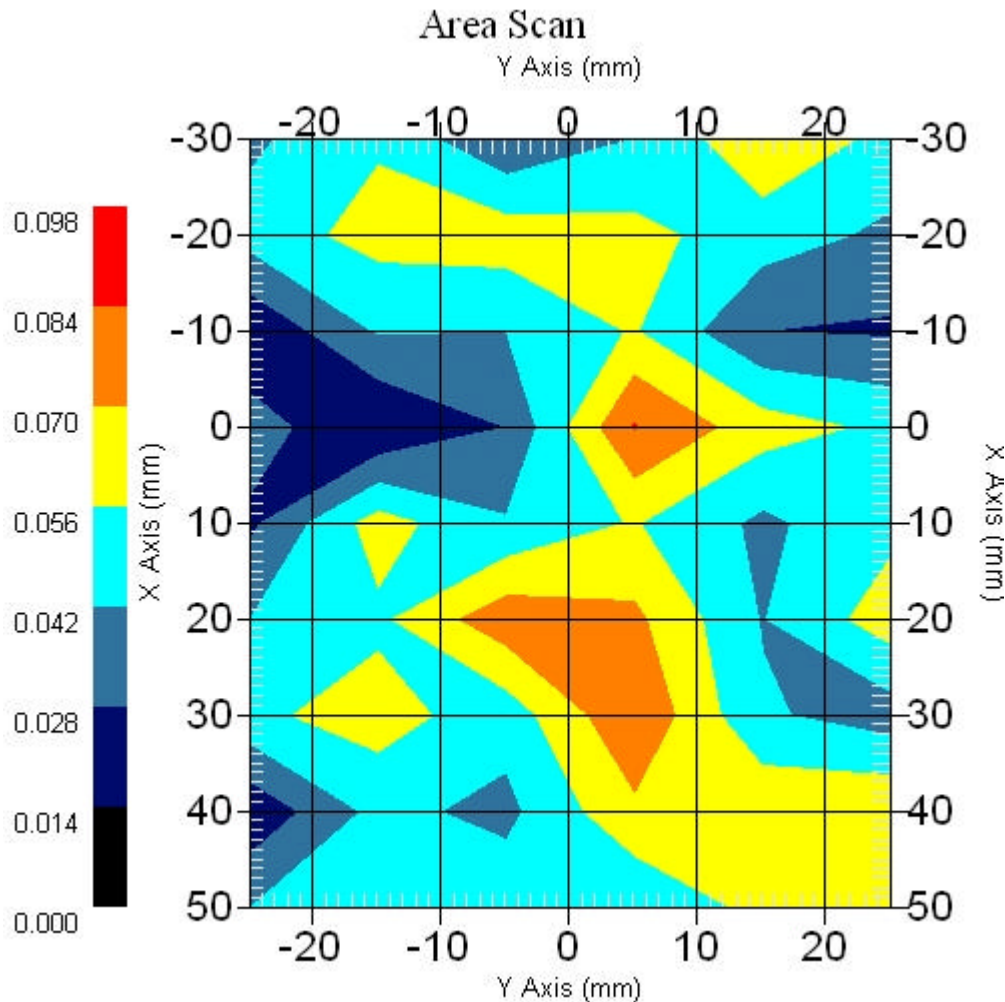
Measurement Data

Crest Factor : 1  
Scan Type : Complete  
Area Scan : 9x6x1 : Measurement x=10mm, y=10mm, z=4mm  
Zoom Scan : 9x9x13 : Measurement x=4mm, y=4mm, z=2.5mm

Other Data

DUT Position : Touch  
Separation : 0  
Channel : Mid - 5260MHz

Power Drift-Start : 0.078 W/kg  
Power Drift-Finish: 0.075 W/kg  
Power Drift (%) : -3.846  
Picture :



1 gram SAR value : 0.114 W/kg  
10 gram SAR value : 0.105 W/kg  
Area Scan Peak SAR : 0.085 W/kg  
Zoom Scan Peak SAR : 0.070 W/kg

■ 5260 MHz, EUT Position: Tablet, SP, 1880 GSM

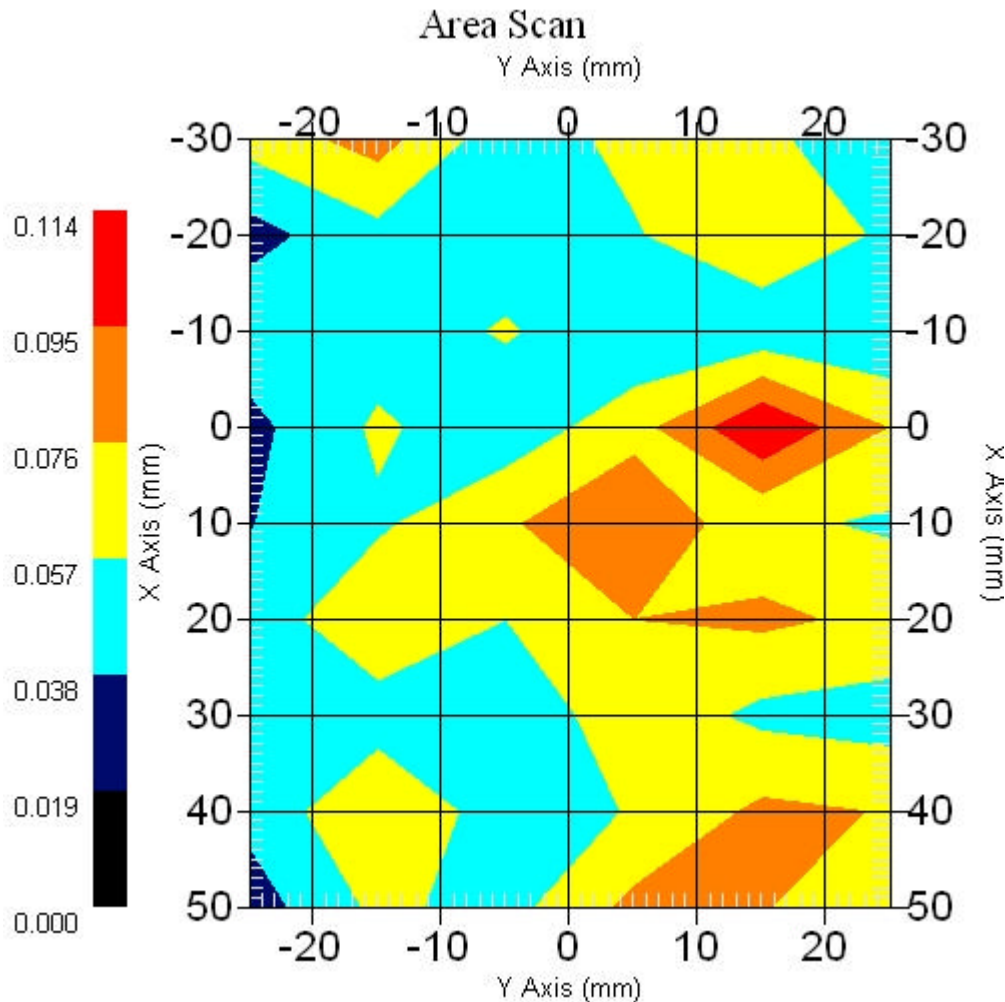
Measurement Data

Crest Factor : 1  
Scan Type : Complete  
Area Scan : 9x6x1 : Measurement x=10mm, y=10mm, z=4mm  
Zoom Scan : 9x9x13 : Measurement x=4mm, y=4mm, z=2.5mm

Other Data

DUT Position : Touch  
Separation : 0  
Channel : Mid - 5260MHz

Power Drift-Start : 0.070 W/kg  
Power Drift-Finish: 0.072 W/kg  
Power Drift (%) : 3.281  
Picture :

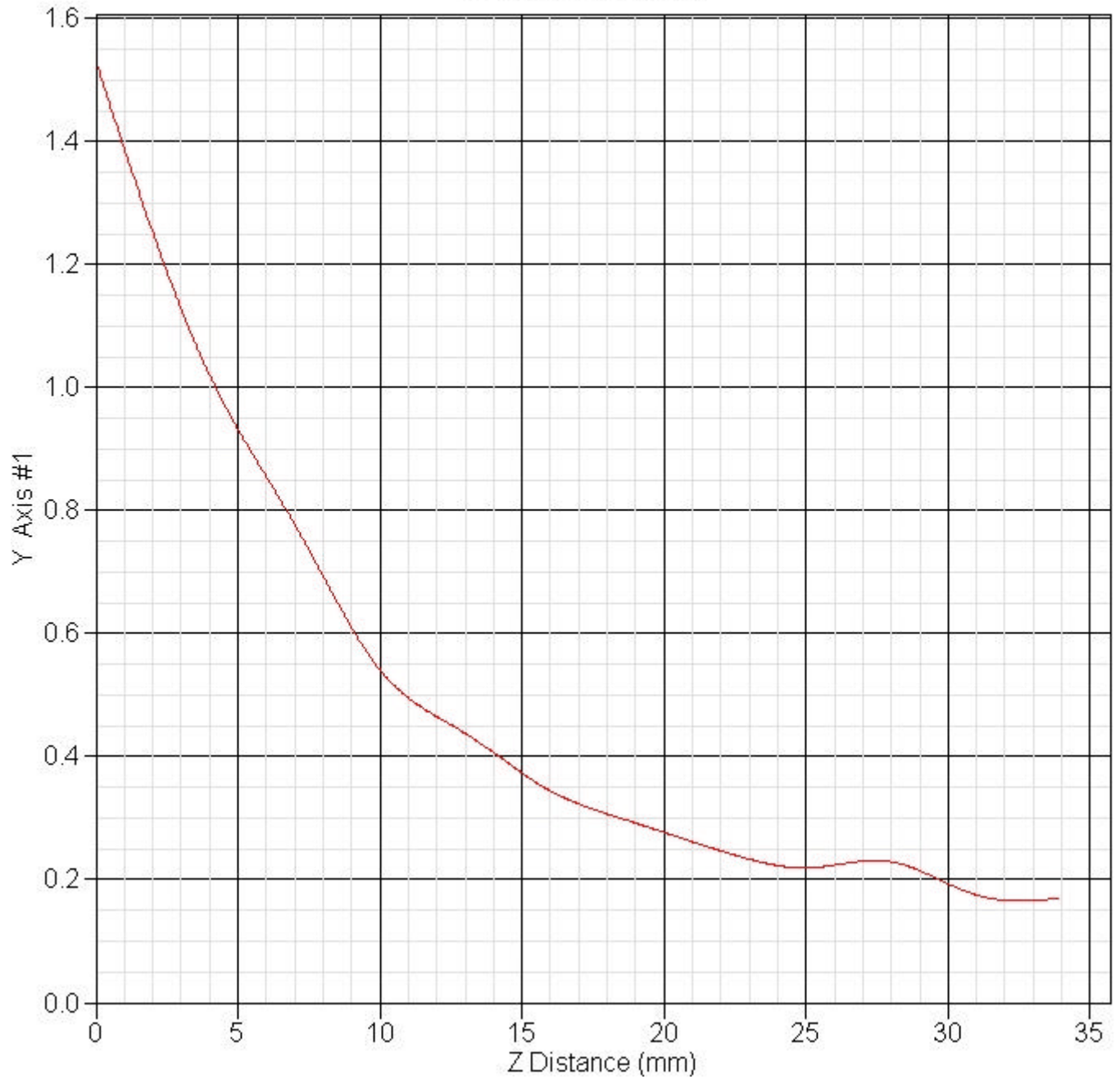


1 gram SAR value : 0.212 W/kg  
10 gram SAR value : 0.189 W/kg  
Area Scan Peak SAR : 0.112 W/kg  
Zoom Scan Peak SAR : 0.430 W/kg

■ Z Axis : 802.11a 5260 MHz, Position: Tablet SP, 1880 GSM

SAR-Z Axis

at Hotspot x:20.20 y:-5.00



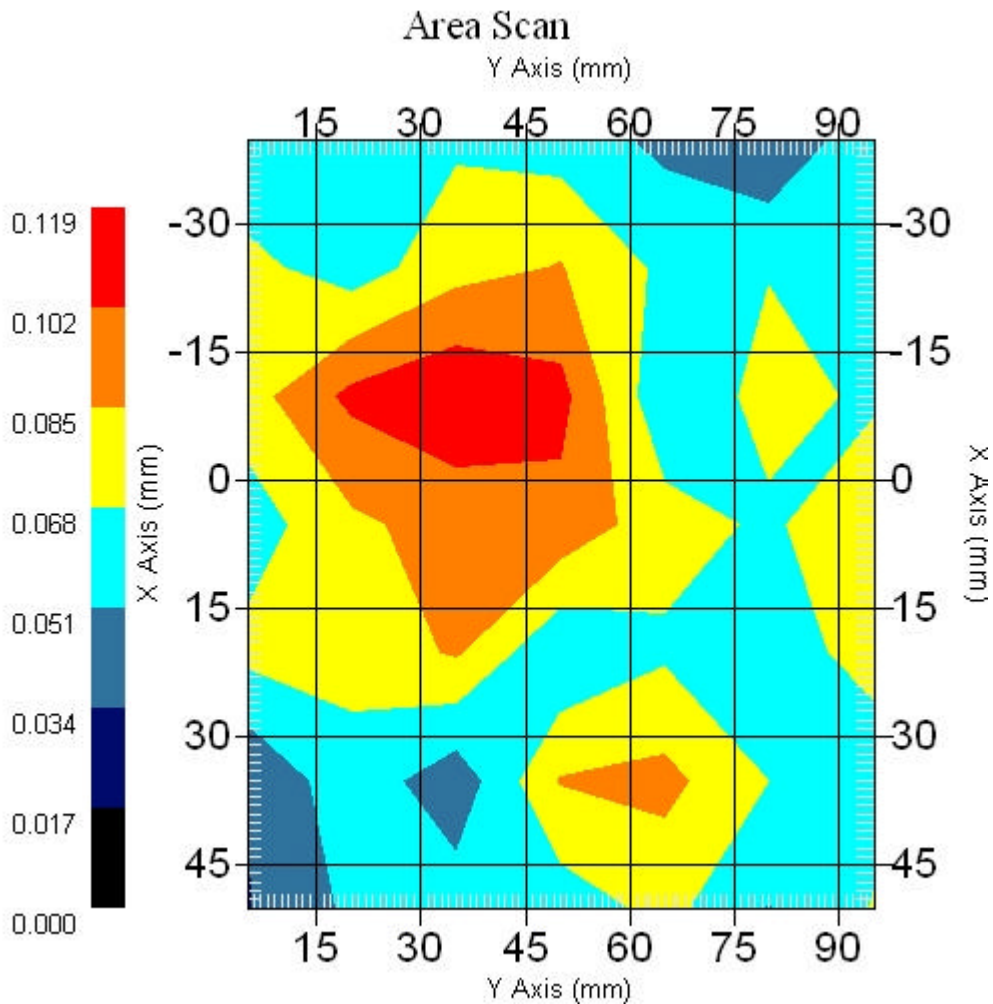
**13.2 802.11a (5150 ~ 5350MHz)+ WWAN Tosa (EV-DO) : FCCID N7N-MC5720 + Bluetooth**

**■ 5260MHz only, EUT Position: Laptop Main**

Measurement Data

Crest Factor : 1  
 Scan Type : Complete  
 Area Scan : 7x7x1 : Measurement x=15mm, y=15mm, z=4mm  
 Zoom Scan : 9x9x13 : Measurement x=4mm, y=4mm, z=2.5mm  
 DUT Position : Touch  
 Separation : 0  
 Channel : Mid - 5260MHz

Power Drift-Start : 0.075 W/kg  
 Power Drift-Finish: 0.076 W/kg  
 Power Drift (%) : 1.333



1 gram SAR value : 0.095 W/kg  
 10 gram SAR value : 0.072 W/kg  
 Area Scan Peak SAR : 0.116 W/kg  
 Zoom Scan Peak SAR : 0.198 W/kg

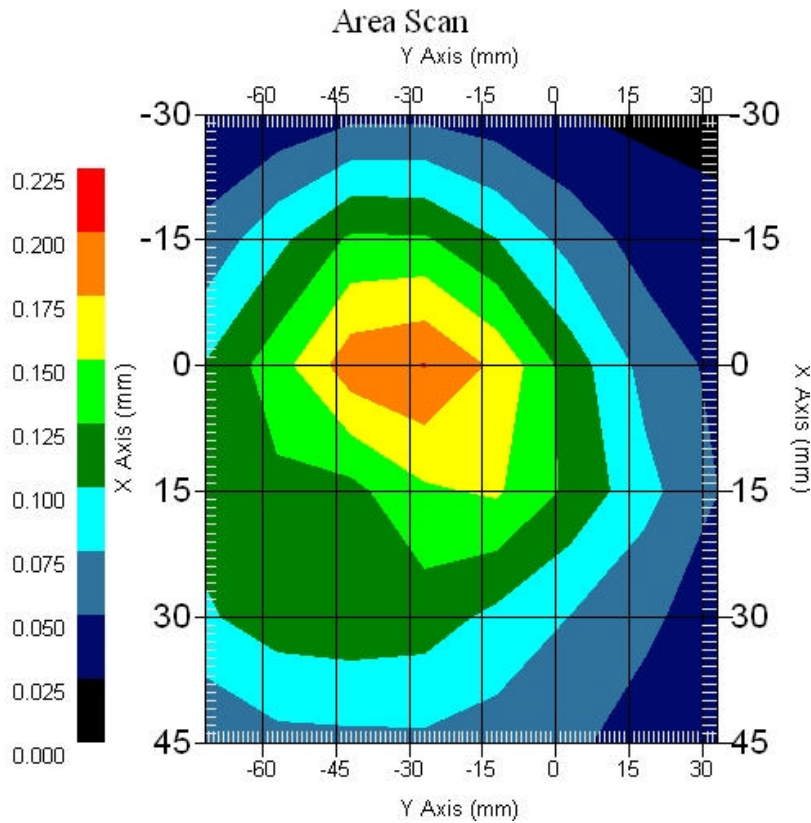
■ **5260MHz, EUT Position: Laptop, 836 EVDO only**

Measurement Data

Crest Factor : 1  
Scan Type : Complete  
Area Scan : 6x8x1 : Measurement x=15mm, y=15mm, z=4mm  
Zoom Scan : 5x5x8 : Measurement x=8mm, y=8mm, z=4mm

DUT Position : Touch  
Separation : 0  
Channel : Mid - 836MHz

Power Drift-Start : 0.131 W/kg  
Power Drift-Finish: 0.126 W/kg  
Power Drift (%) : -3.506  
Picture :



1 gram SAR value : 0.193 W/kg  
10 gram SAR value : 0.121 W/kg  
Area Scan Peak SAR : 0.201 W/kg  
Zoom Scan Peak SAR : 0.320 W/kg

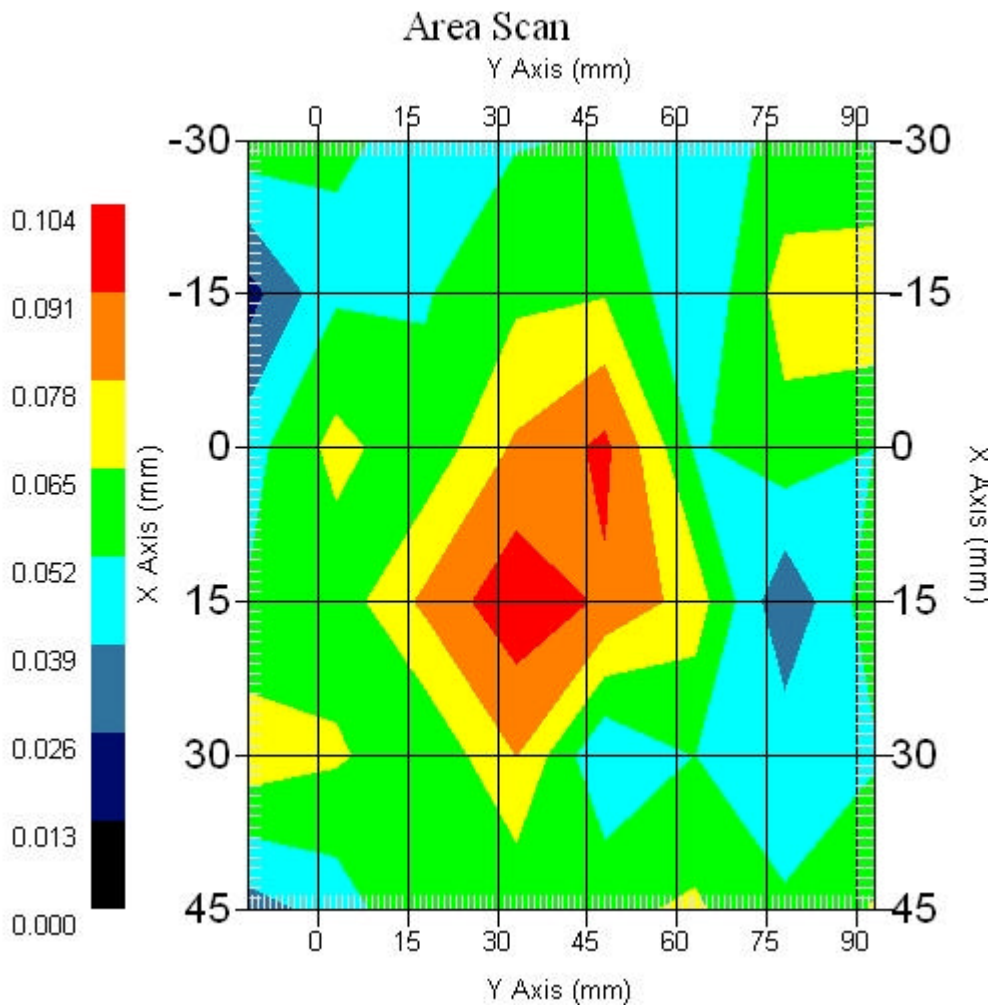
■ 5260MHz only, EUT Position: Laptop Aux.

Measurement Data

Crest Factor : 1  
Scan Type : Complete  
Area Scan : 6x8x1 : Measurement x=15mm, y=15mm, z=4mm  
Zoom Scan : 9x9x13 : Measurement x=4mm, y=4mm, z=2.5mm

DUT Position : Touch  
Separation : 0  
Channel : Mid - 5260MHz

Power Drift-Start : 0.047 W/kg  
Power Drift-Finish: 0.047 W/kg  
Power Drift (%) : -0.006



1 gram SAR value : 0.091 W/kg  
10 gram SAR value : 0.060 W/kg  
Area Scan Peak SAR : 0.100 W/kg  
Zoom Scan Peak SAR : 0.172 W/kg



■ 5260 MHz, EUT Position: Tablet, PL, 836 EV-DO

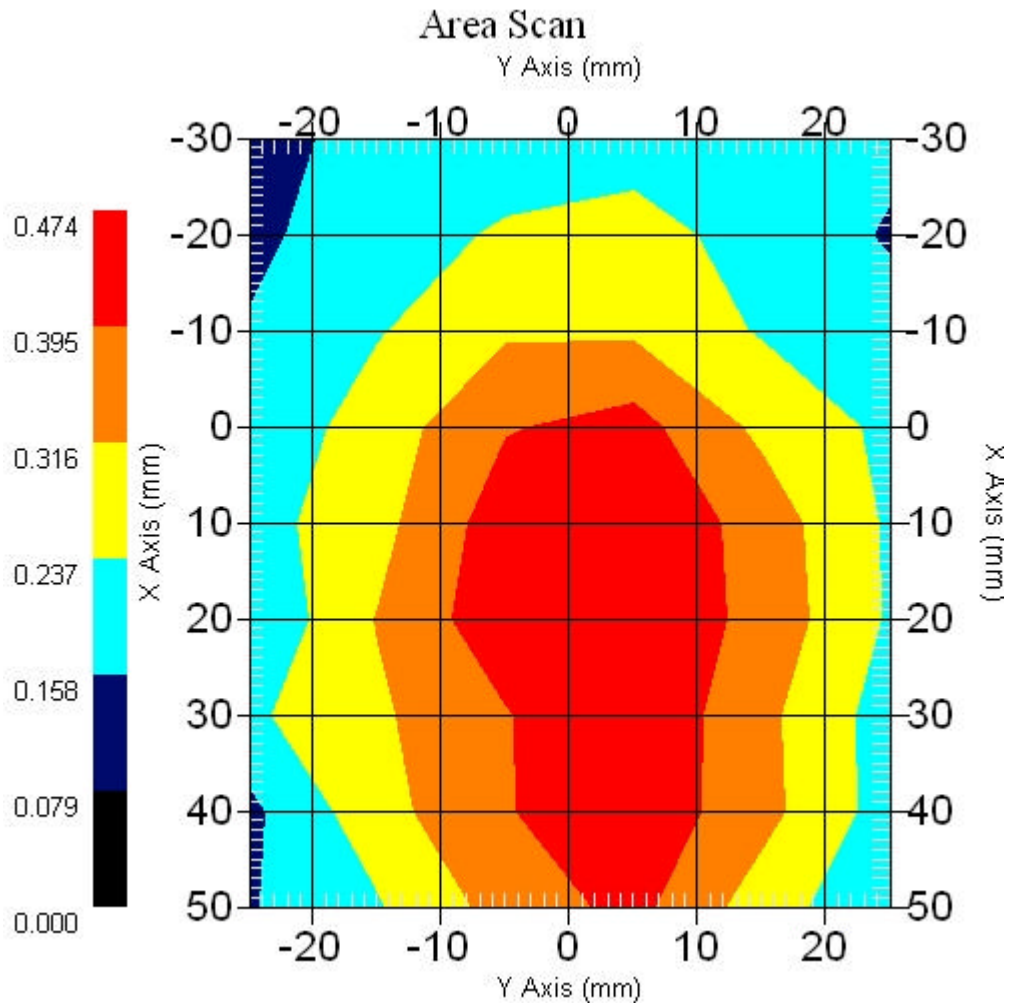
Measurement Data

Crest Factor : 1  
Scan Type : Complete  
Area Scan : 9x6x1 : Measurement x=10mm, y=10mm, z=4mm  
Zoom Scan : 9x9x13 : Measurement x=4mm, y=4mm, z=2.5mm

Other Data

DUT Position : Touch  
Separation : 0  
Channel : Mid - 5260MHz

Power Drift-Start : 0.420 W/kg  
Power Drift-Finish: 0.417 W/kg  
Power Drift (%) : -0.714



1 gram SAR value : 0.525 W/kg  
10 gram SAR value : 0.380 W/kg  
Area Scan Peak SAR : 0.473 W/kg  
Zoom Scan Peak SAR : 0.920 W/kg

■ 5260 MHz, EUT Position: Tablet, PP, 836 EV-DO

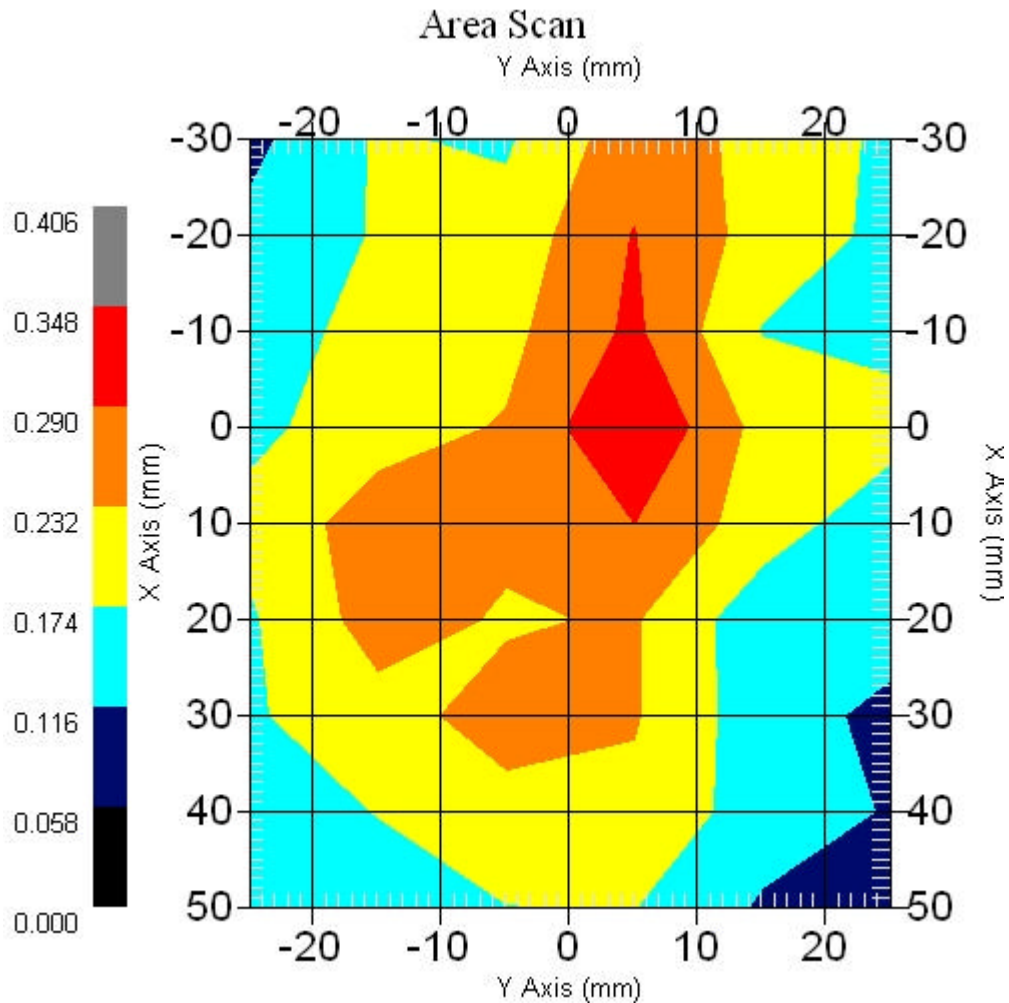
Measurement Data

Crest Factor : 1  
Scan Type : Complete  
Area Scan : 9x6x1 : Measurement x=10mm, y=10mm, z=4mm  
Zoom Scan : 9x9x13 : Measurement x=4mm, y=4mm, z=2.5mm

Other Data

DUT Position : Touch  
Separation : 0  
Channel : Mid - 5260MHz

Power Drift-Start : 0.278 W/kg  
Power Drift-Finish: 0.279 W/kg  
Power Drift (%) : 0.472



1 gram SAR value : 0.292 W/kg  
10 gram SAR value : 0.224 W/kg  
Area Scan Peak SAR : 0.348 W/kg  
Zoom Scan Peak SAR : 0.510 W/kg

■ 5260 MHz, EUT Position: Tablet, SL, 836 EV-DO

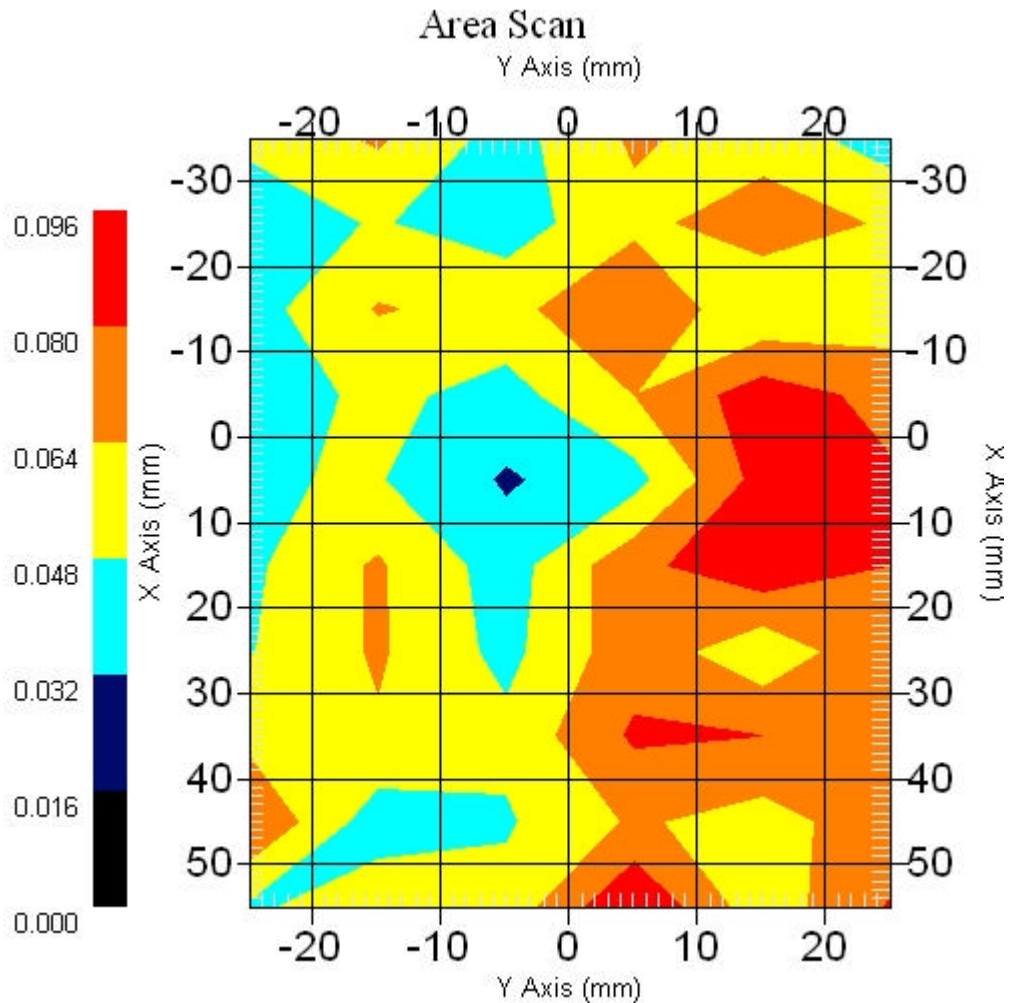
Measurement Data

Crest Factor : 1  
Scan Type : Complete  
Area Scan : 10x6x1 : Measurement x=10mm, y=10mm, z=4mm  
Zoom Scan : 9x9x13 : Measurement x=4mm, y=4mm, z=2.5mm

Other Data

DUT Position : Touch  
Separation : 0  
Channel : Mid - 5260

Power Drift-Start : 0.073 W/kg  
Power Drift-Finish: 0.076 W/kg  
Power Drift (%) : 4.109



1 gram SAR value : 0.108 W/kg  
10 gram SAR value : 0.087 W/kg  
Area Scan Peak SAR : 0.096 W/kg  
Zoom Scan Peak SAR : 0.310 W/kg

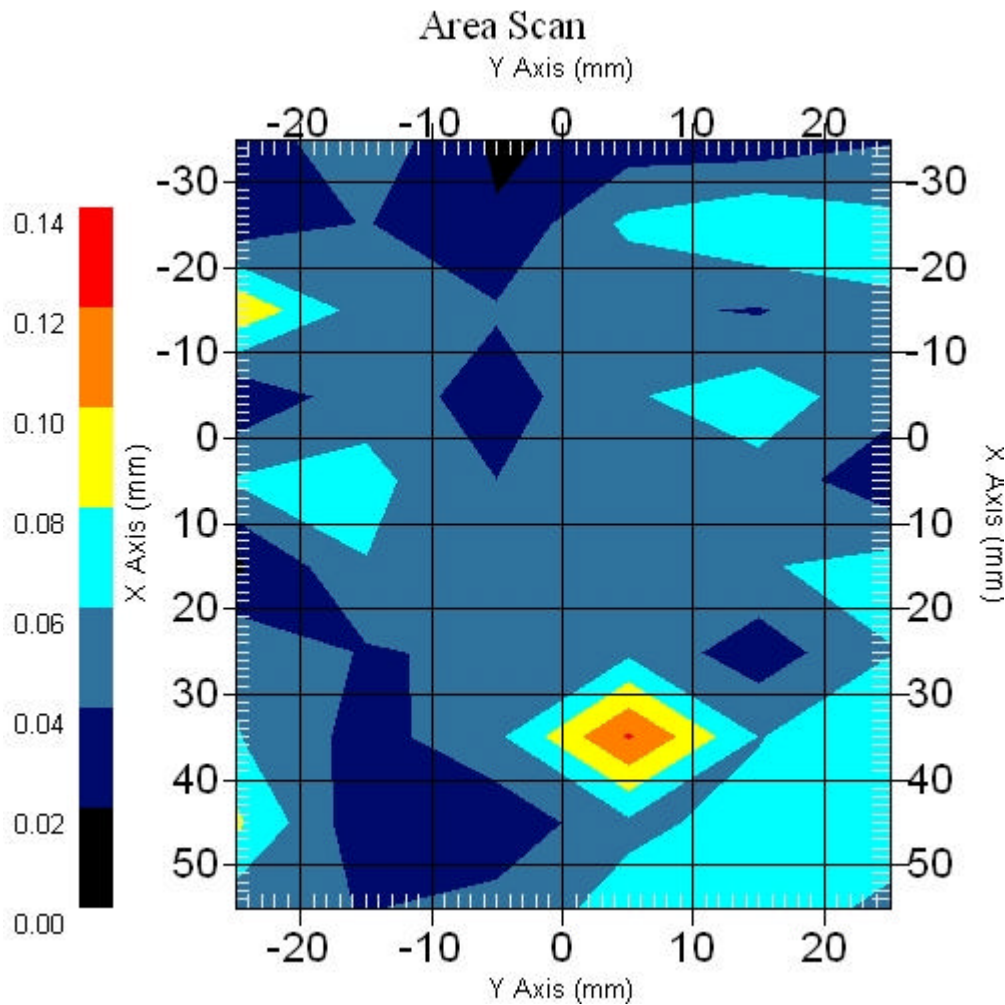
■ **5260 MHz Only, EUT Position: Tablet, SP**

Measurement Data

Crest Factor : 1  
Scan Type : Complete  
Area Scan : 10x6x1 : Measurement x=10mm, y=10mm, z=4mm  
Zoom Scan : 9x9x13 : Measurement x=4mm, y=4mm, z=2.5mm

DUT Position : Touch  
Separation : 0  
Channel : Mid - 5260

Power Drift-Start : 0.059 W/kg  
Power Drift-Finish: 0.057 W/kg  
Power Drift (%) : -3.390



1 gram SAR value : 0.086 W/kg  
10 gram SAR value : 0.081 W/kg  
Area Scan Peak SAR : 0.122 W/kg  
Zoom Scan Peak SAR : 0.170 W/kg

■ **EUT Position: Tablet, SP, 836 EV-DO Only**

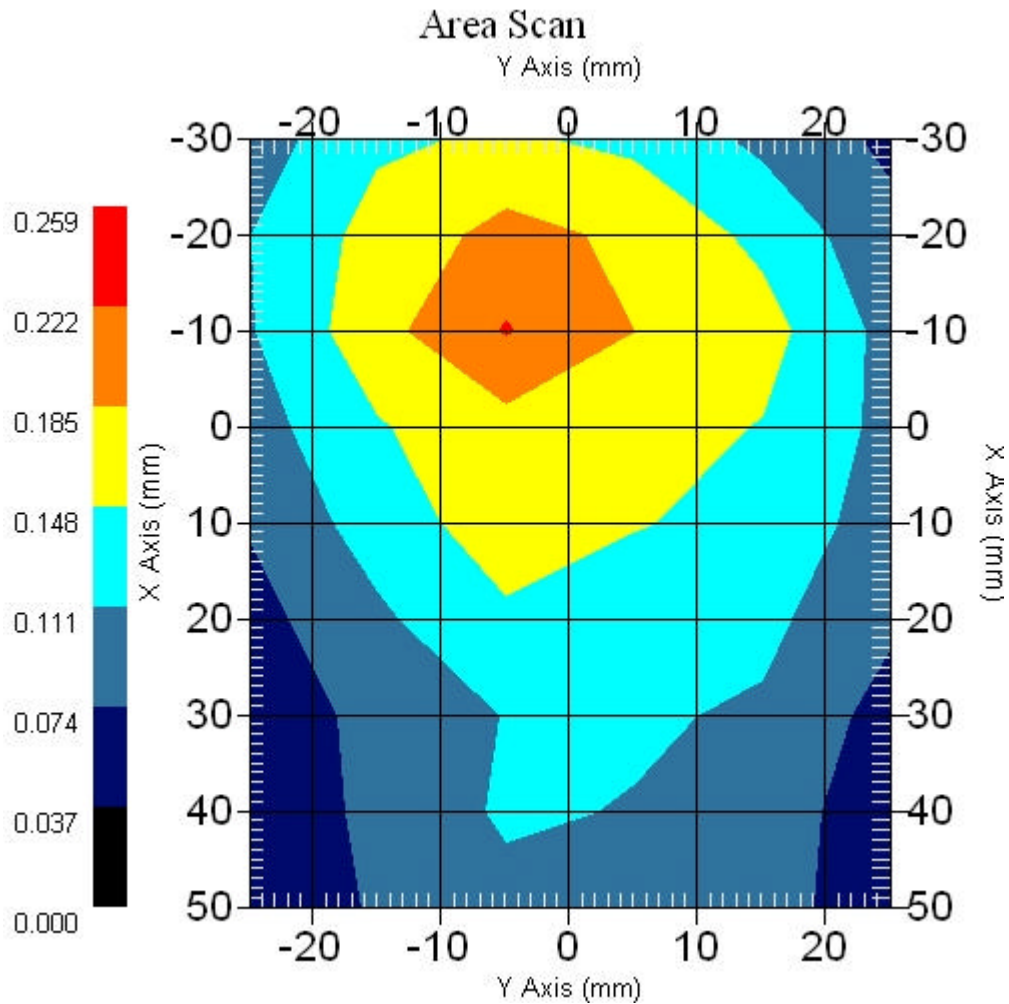
Measurement Data

Crest Factor : 1  
Scan Type : Complete  
Area Scan : 9x6x1 : Measurement x=10mm, y=10mm, z=4mm  
Zoom Scan : 5x5x8 : Measurement x=8mm, y=8mm, z=4mm

Other Data

DUT Position : Touch  
Separation : 0  
Channel : Mid - 800MHz

Power Drift-Start : 0.175 W/kg  
Power Drift-Finish: 0.173 W/kg  
Power Drift (%) : -0.939



1 gram SAR value : 0.203 W/kg  
10 gram SAR value : 0.130 W/kg  
Area Scan Peak SAR : 0.225 W/kg  
Zoom Scan Peak SAR : 0.350 W/kg

■ **5260 MHz, EUT Position: Tablet, PL, 1880 EV-DO**

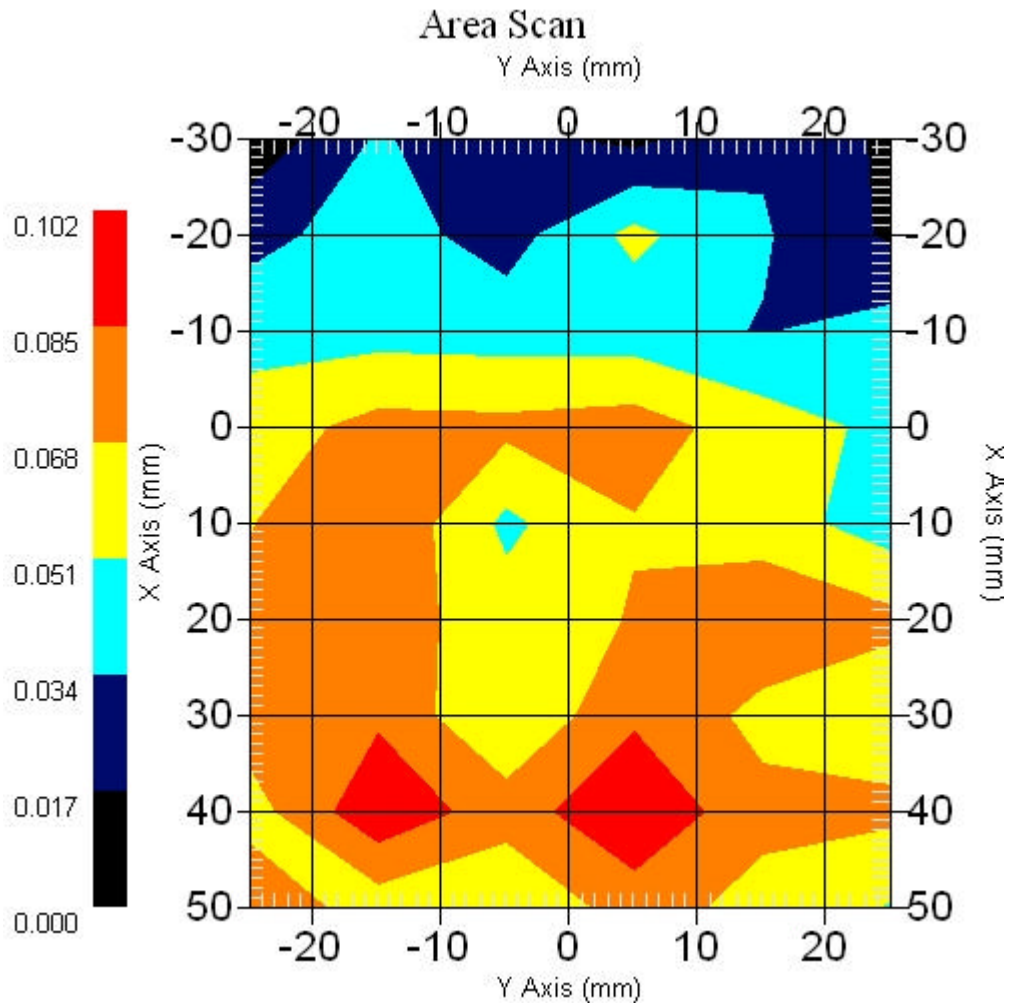
Measurement Data

Crest Factor : 1  
Scan Type : Complete  
Area Scan : 9x6x1 : Measurement x=10mm, y=10mm, z=4mm  
Zoom Scan : 9x9x13 : Measurement x=4mm, y=4mm, z=2.5mm

Other Data

DUT Position : Touch  
Separation : 0  
Channel : Mid - 5260MHz

Power Drift-Start : 0.057 W/kg  
Power Drift-Finish: 0.059 W/kg  
Power Drift (%) : 3.509



1 gram SAR value : 0.135 W/kg  
10 gram SAR value : 0.114 W/kg  
Area Scan Peak SAR : 0.100 W/kg  
Zoom Scan Peak SAR : 0.270 W/kg

■ **5260 MHz, EUT Position: Tablet, PP, 1880 EV-DO**

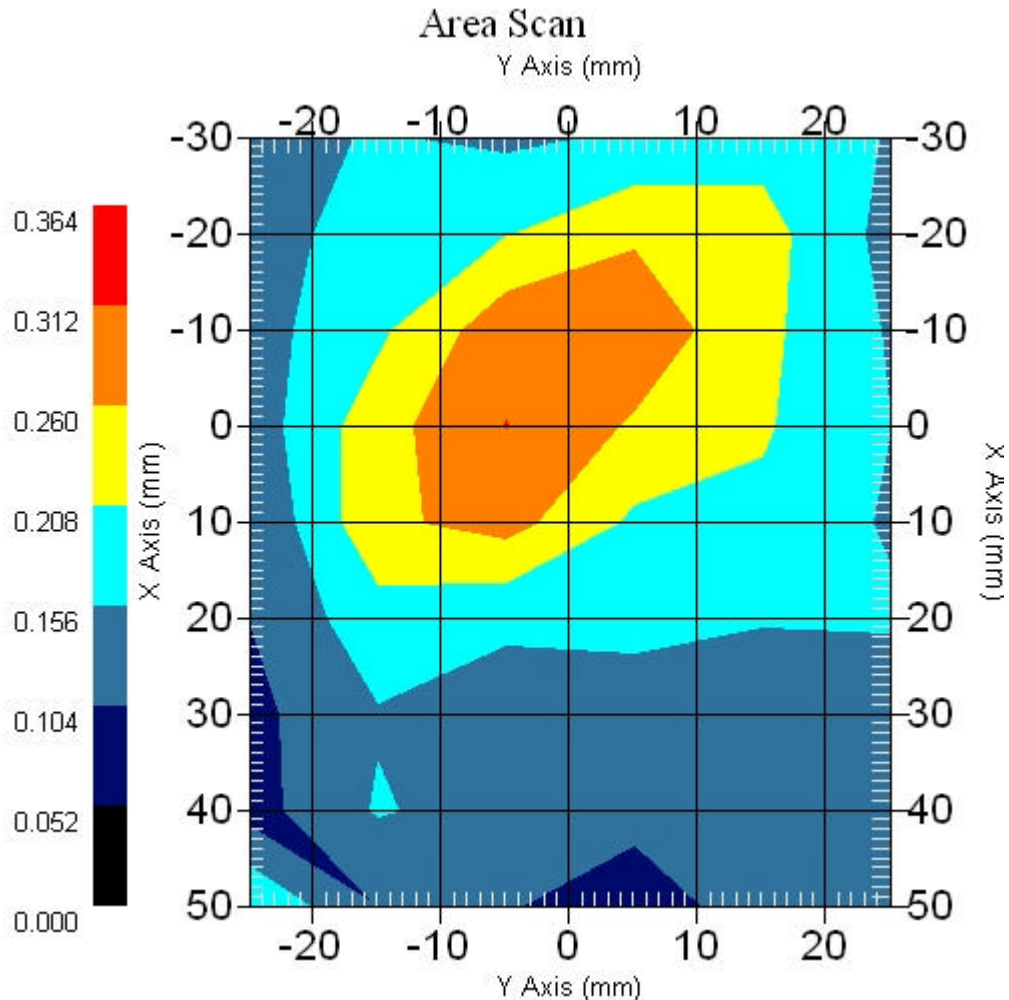
Measurement Data

Crest Factor : 1  
Scan Type : Complete  
Area Scan : 9x6x1 : Measurement x=10mm, y=10mm, z=4mm  
Zoom Scan : 9x9x13 : Measurement x=4mm, y=4mm, z=2.5mm

Other Data

DUT Position : Touch  
Separation : 0  
Channel : Mid - 5260MHz

Power Drift-Start : 0.326 W/kg  
Power Drift-Finish: 0.310 W/kg  
Power Drift (%) : -4.747



1 gram SAR value : 0.268 W/kg  
10 gram SAR value : 0.180 W/kg  
Area Scan Peak SAR : 0.313 W/kg  
Zoom Scan Peak SAR : 0.440 W/kg

■ 5260 MHz, EUT Position: Tablet, SL, 1880 EV-DO

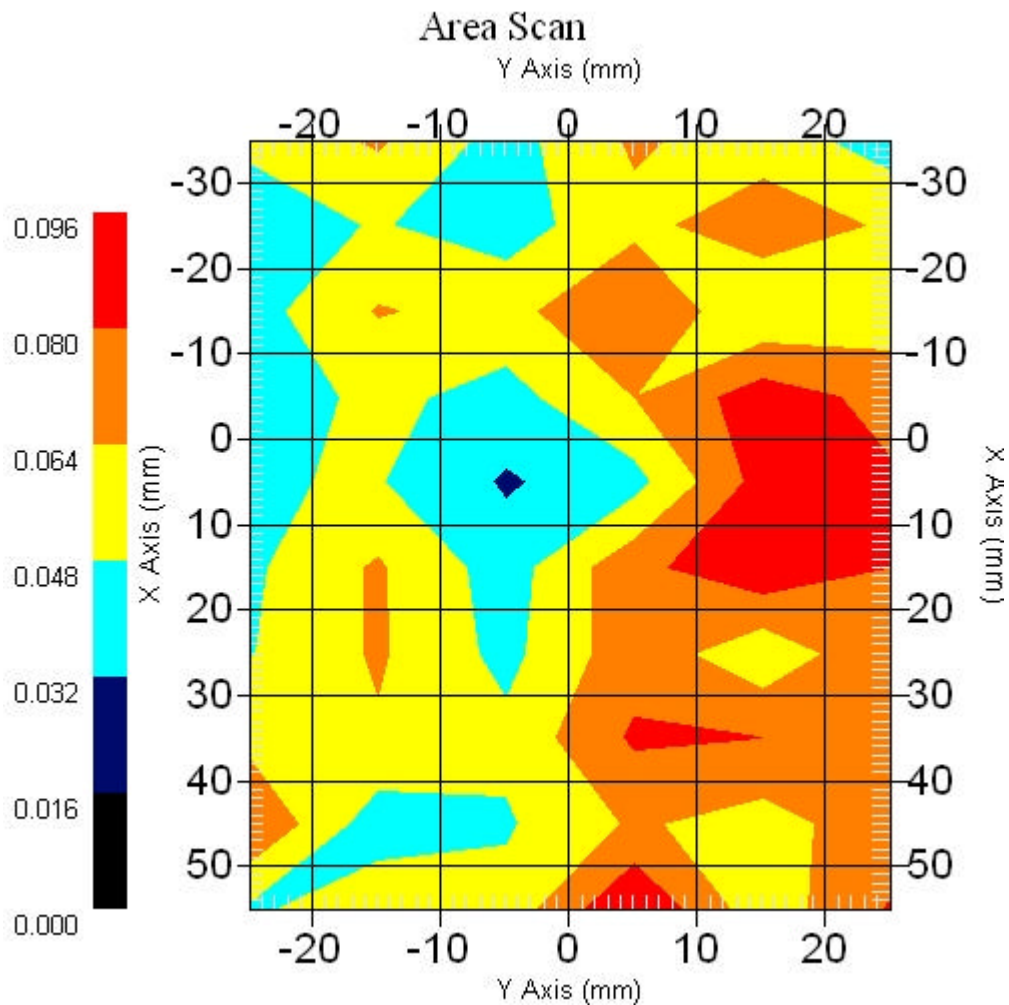
Measurement Data

Crest Factor : 1  
Scan Type : Complete  
Area Scan : 10x6x1 : Measurement x=10mm, y=10mm, z=4mm  
Zoom Scan : 9x9x13 : Measurement x=4mm, y=4mm, z=2.5mm

Other Data

DUT Position : Touch  
Separation : 0  
Channel : Mid - 5260MHz

Power Drift-Start : 0.054 W/kg  
Power Drift-Finish: 0.052 W/kg  
Power Drift (%) : -3.703



1 gram SAR value : 0.108 W/kg  
10 gram SAR value : 0.087 W/kg  
Area Scan Peak SAR : 0.096 W/kg  
Zoom Scan Peak SAR : 0.310 W/kg



■ 5260 MHz, EUT Position: Tablet, SP, 1880 EV-DO

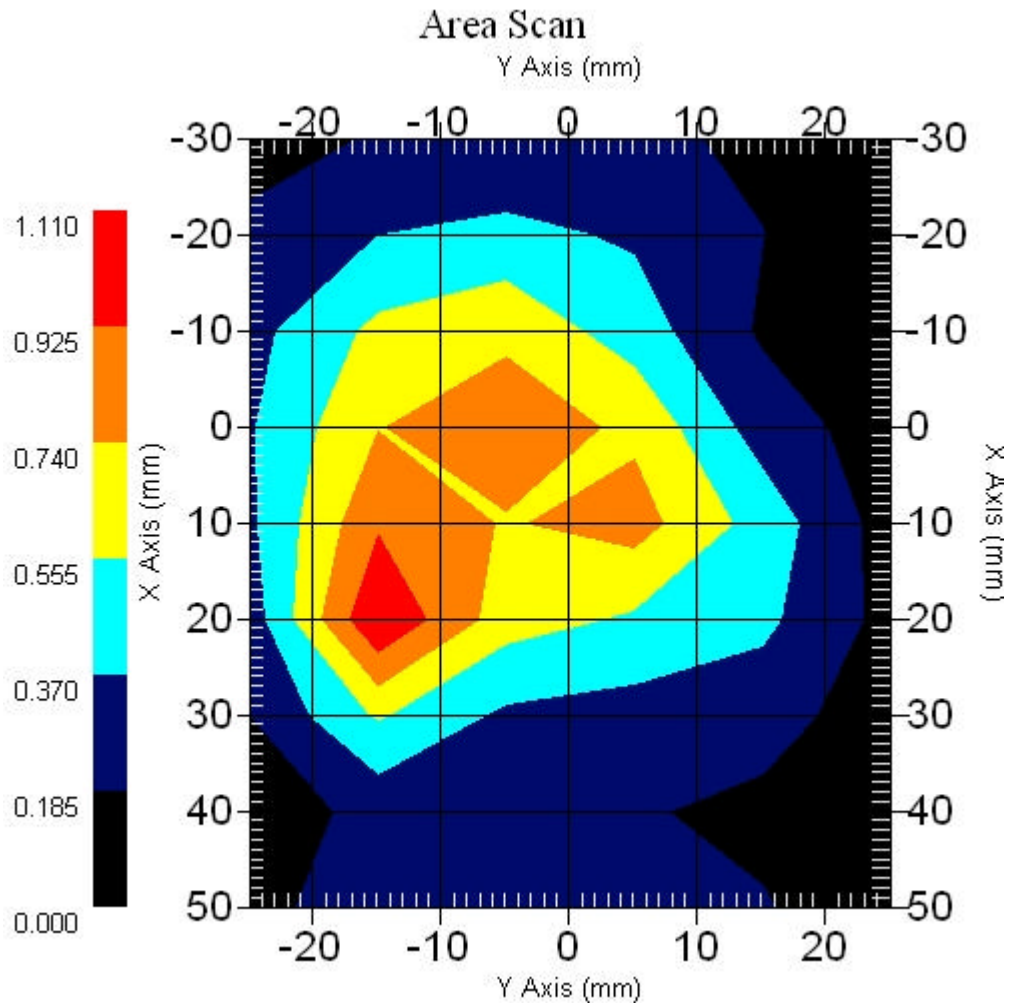
Measurement Data

Crest Factor : 1  
Scan Type : Complete  
Area Scan : 9x6x1 : Measurement x=10mm, y=10mm, z=4mm  
Zoom Scan : 9x9x13 : Measurement x=4mm, y=4mm, z=2.5mm

Other Data

DUT Position : Touch  
Separation : 0  
Channel : Mid - 5260MHz

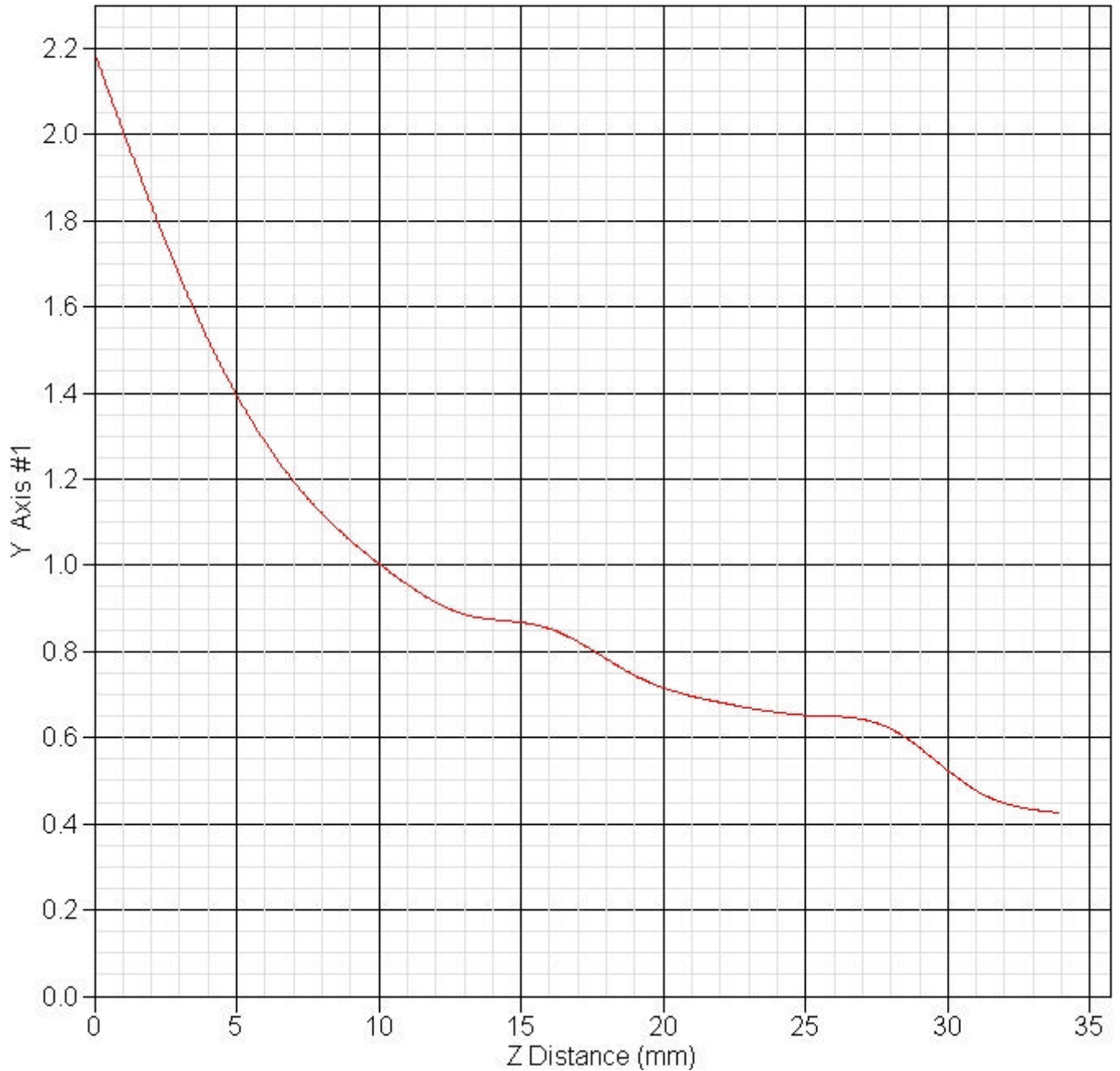
Power Drift-Start : 0.687 W/kg  
Power Drift-Finish: 0.667 W/kg  
Power Drift (%) : -2.911



1 gram SAR value : 0.833 W/kg  
10 gram SAR value : 0.464 W/kg  
Area Scan Peak SAR : 1.109 W/kg  
Zoom Scan Peak SAR : 1.661 W/kg

■ Z Axis 802.11a 5260 MHz, Position: Tablet SP, 836 GSM

SAR-Z Axis  
at Hotspot x:-14.50 y:-60.00



# 14. 802.11a (5725 ~ 5850MHz) SAR measurement Data

## 14.1. 802.11a (5725 ~ 5850MHz) + Karafuto (GSM, EGSM, UMTS) : FCCID N7NMC8765 +Bluetooth

### 5785MHz

Measurement Date : 14-Aug-2006

#### Product Data

Device Name : Golan  
 Serial No. : 11.a-Botton\_1-GSM800  
 Type : Other  
 Model : 1  
 Frequency : 5785.00 MHz  
 Max. Transmit Pwr : 0.069 W  
 Drift Time : 0 min(s)  
 Length : 230 mm  
 Width : 270 mm  
 Depth : 22 mm  
 Antenna Type : Internal  
 Orientation : Touch

#### Phantom Data

Name : APREL-Uni  
 Type : Uni-Phantom  
 Size (mm) : 280 x 280 x 200  
 Serial No. : System Default  
 Location : Center  
 Description : uni\_1  
 Tissue Data  
 Type : BODY  
 Serial No. : 5800-B-AU-18  
 Frequency : 5800.00 MHz  
 Last Calib. Date : 14-Aug-2006  
 Temperature : 22.30 °C  
 Ambient Temp. : 22.70 °C  
 Humidity : 48.00 RH%  
 Epsilon : 47.63 F/m  
 Sigma : 5.47 S/m  
 Density : 1000.00 kg/cu. m

#### Probe Data

Name : E-field Probe  
 Model : ALS-E-020  
 Type : E-Field Triangle  
 Serial No. : 266  
 Last Calib. Date : 22-Jun-2006  
 Frequency : 5800.00 MHz  
 Duty Cycle Factor: 1  
 Conversion Factor: 4.2  
 Probe Sensitivity: 1.20 1.20 1.20  $\mu\text{V}/(\text{V}/\text{m})^2$   
 Compression Point: 95.00 mV  
 Offset : 1.56 mm

## 836MHz

Measurement Date : 14-Aug-2006

### Product Data

Device Name : Golan  
Serial No. : 11.a-Botton-GSM800  
Type : Other  
Model : 1  
Frequency : 836.00 MHz  
Max. Transmit Pwr : 1.61 W  
Drift Time : 0 min(s)  
Length : 230 mm  
Width : 270 mm  
Depth : 10 mm  
Antenna Type : Internal  
Orientation : Touch  
Power Drift-Start : 0.172 W/kg  
Power Drift-Finish: 0.176 W/kg  
Power Drift (%) : 2.325  
Picture :

### Phantom Data

Name : APREL-Uni  
Type : Uni-Phantom  
Size (mm) : 280 x 280 x 200  
Serial No. : System Default  
Location : Center  
Description : uni\_1

### Tissue Data

Type : BODY  
Serial No. : 835BODY  
Frequency : 835.00 MHz  
Last Calib. Date : 16-Aug-2006  
Temperature : 21.40 °C  
Ambient Temp. : 21.90 °C  
Humidity : 51.00 RH%  
Epsilon : 54.15 F/m  
Sigma : 0.95 S/m  
Density : 1000.00 kg/cu. m

### Probe Data

Name : E-field Probe  
Model : ALS-E-020  
Type : E-Field Triangle  
Serial No. : 266  
Last Calib. Date : 22-Jun-2006  
Frequency : 835.00 MHz  
Duty Cycle Factor: 1  
Conversion Factor: 6.9  
Probe Sensitivity: 1.20 1.20 1.20  $\mu\text{V}/(\text{V}/\text{m})^2$   
Compression Point: 95.00 mV  
Offset : 1.56 mm

■ **5785 MHz Only, EUT Position: Laptop**

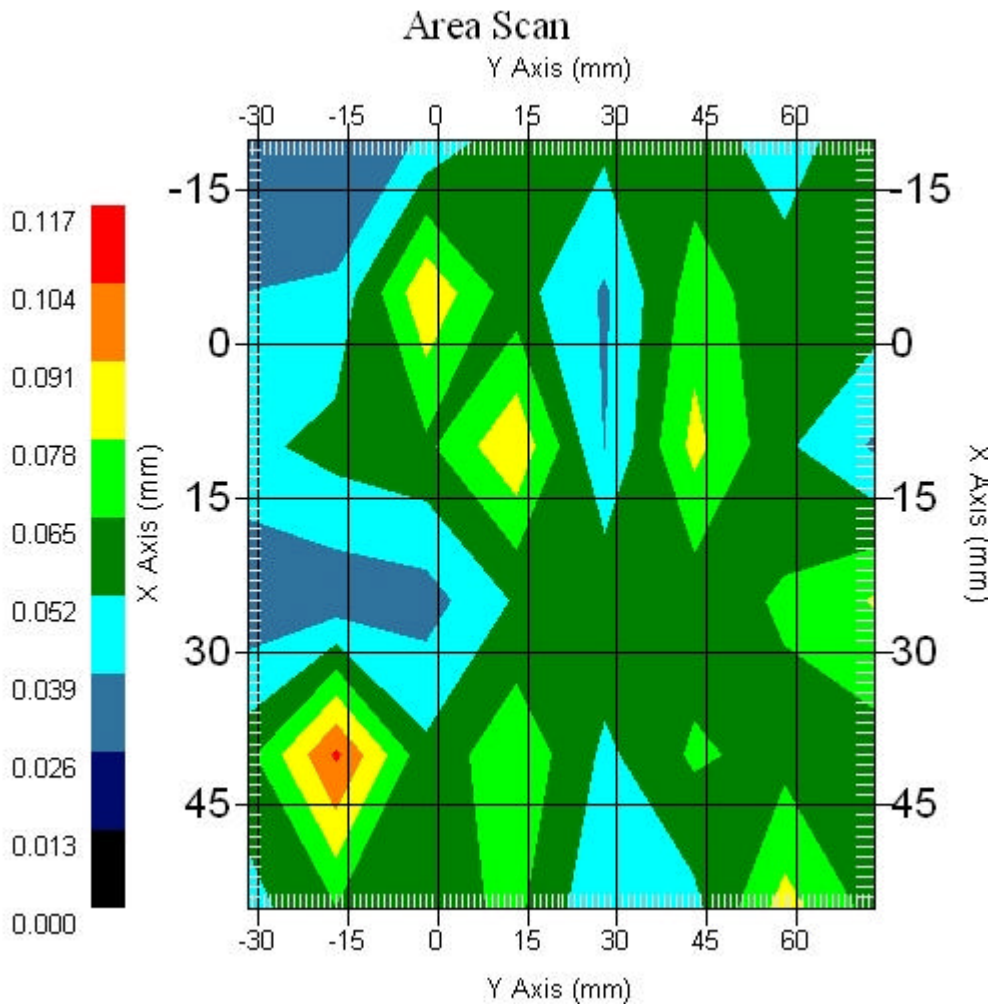
Measurement Data

Crest Factor : 1  
Scan Type : Complete  
Area Scan : 6x8x1 : Measurement x=15mm, y=15mm, z=4mm  
Zoom Scan : 9x9x13 : Measurement x=4mm, y=4mm, z=2.5mm

Other Data

DUT Position : Touch  
Separation : 0  
Channel : Mid - 5785MHz

Power Drift-Start : 0.079 W/kg  
Power Drift-Finish: 0.078 W/kg  
Power Drift (%) : -0.061  
Picture :



1 gram SAR value : 0.139 W/kg  
10 gram SAR value : 0.103 W/kg  
Area Scan Peak SAR : 0.106 W/kg  
Zoom Scan Peak SAR : 0.340 W/kg

■ EUT Position: Laptop, 836 GSM Only

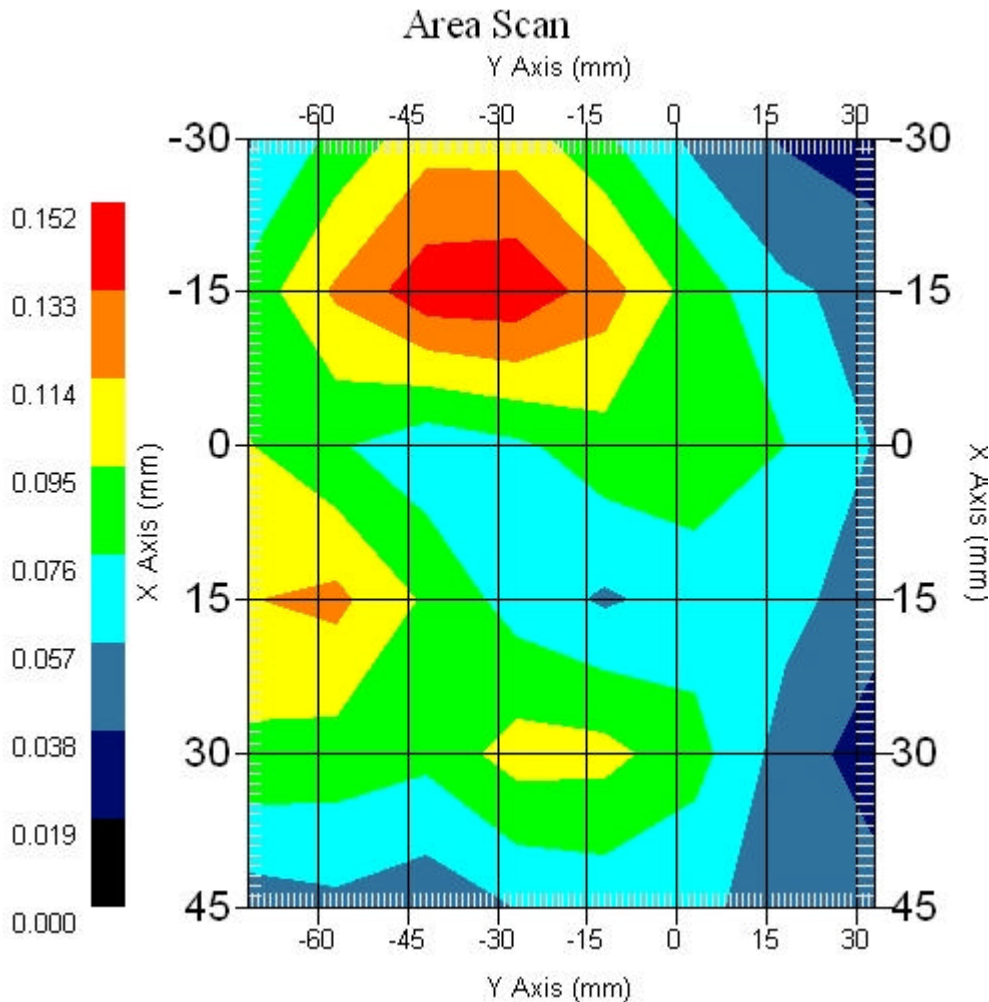
Measurement Data

Crest Factor : 1  
Scan Type : Complete  
Area Scan : 6x8x1 : Measurement x=15mm, y=15mm, z=4mm  
Zoom Scan : 5x5x8 : Measurement x=8mm, y=8mm, z=4mm

Other Data

DUT Position : Touch  
Separation : 0  
Channel : Mid - 800MHz

Power Drift-Start : 0.129 W/kg  
Power Drift-Finish: 0.129 W/kg  
Power Drift (%) : 0.012  
Picture :



1 gram SAR value : 0.173 W/kg  
10 gram SAR value : 0.111 W/kg  
Area Scan Peak SAR : 0.148 W/kg  
Zoom Scan Peak SAR : 0.260 W/kg

■ 5785 MHz Only, EUT Position: Laptop

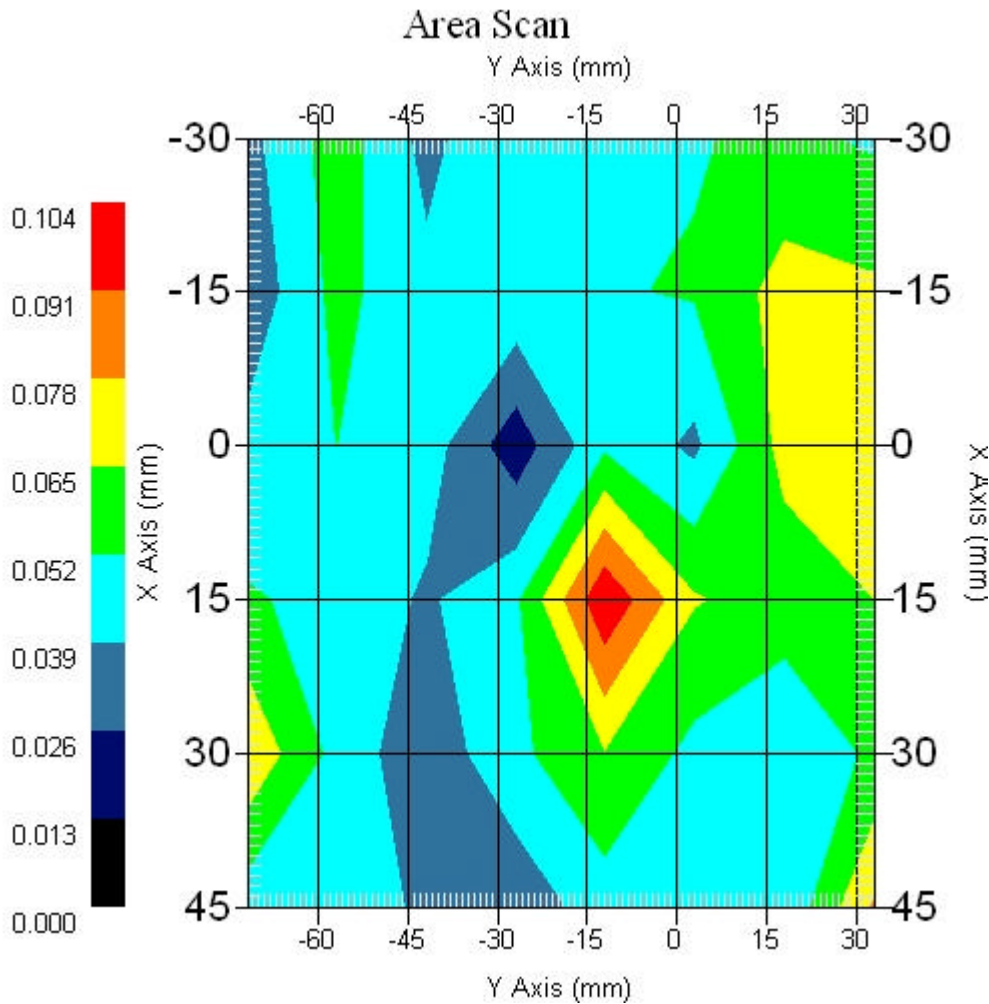
Measurement Data

Crest Factor : 1  
Scan Type : Complete  
Area Scan : 6x8x1 : Measurement x=15mm, y=15mm, z=4mm  
Zoom Scan : 9x9x13 : Measurement x=4mm, y=4mm, z=2.5mm

Other Data

DUT Position : Touch  
Separation : 0  
Channel : Mid - 5785MHz

Power Drift-Start : 0.061 W/kg  
Power Drift-Finish: 0.067 W/kg  
Power Drift (%) : 1.639  
Picture :



1 gram SAR value : 0.092 W/kg  
10 gram SAR value : 0.075 W/kg  
Area Scan Peak SAR : 0.104 W/kg  
Zoom Scan Peak SAR : 0.200 W/kg

■ **5785 MHz, EUT Position: Tablet, PL,836 GSM**

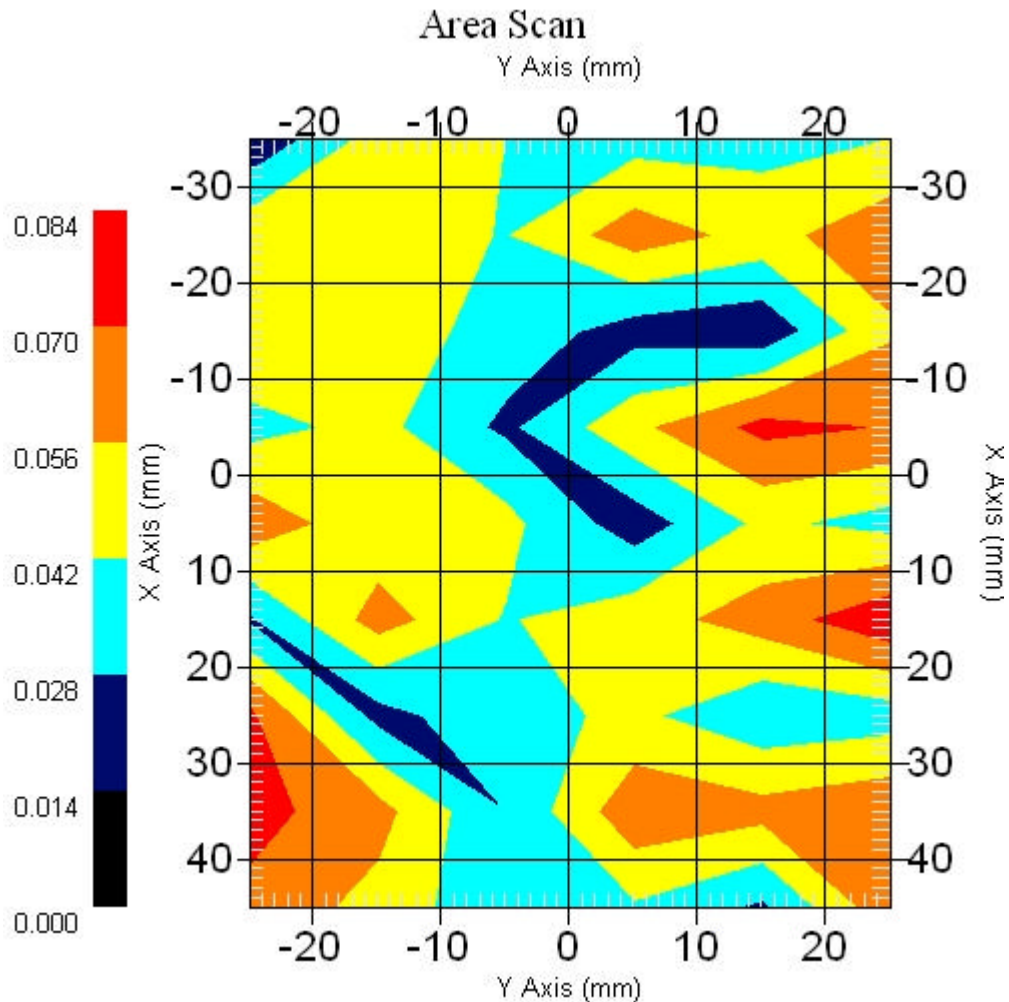
Measurement Data

Crest Factor : 1  
Scan Type : Complete  
Area Scan : 9x6x1 : Measurement x=10mm, y=10mm, z=4mm  
Zoom Scan : 9x9x13 : Measurement x=4mm, y=4mm, z=2.5mm

Other Data

DUT Position : Touch  
Separation : 0  
Channel : Mid - 5785MHz

Power Drift-Start : 0.050 W/kg  
Power Drift-Finish: 0.048 W/kg  
Power Drift (%) : -4.023  
Picture :



1 gram SAR value : 0.120 W/kg  
10 gram SAR value : 0.102 W/kg  
Area Scan Peak SAR : 0.081 W/kg  
Zoom Scan Peak SAR : 0.160 W/kg



■ 5785 MHz, EUT Position: Tablet, PP,836 GSM

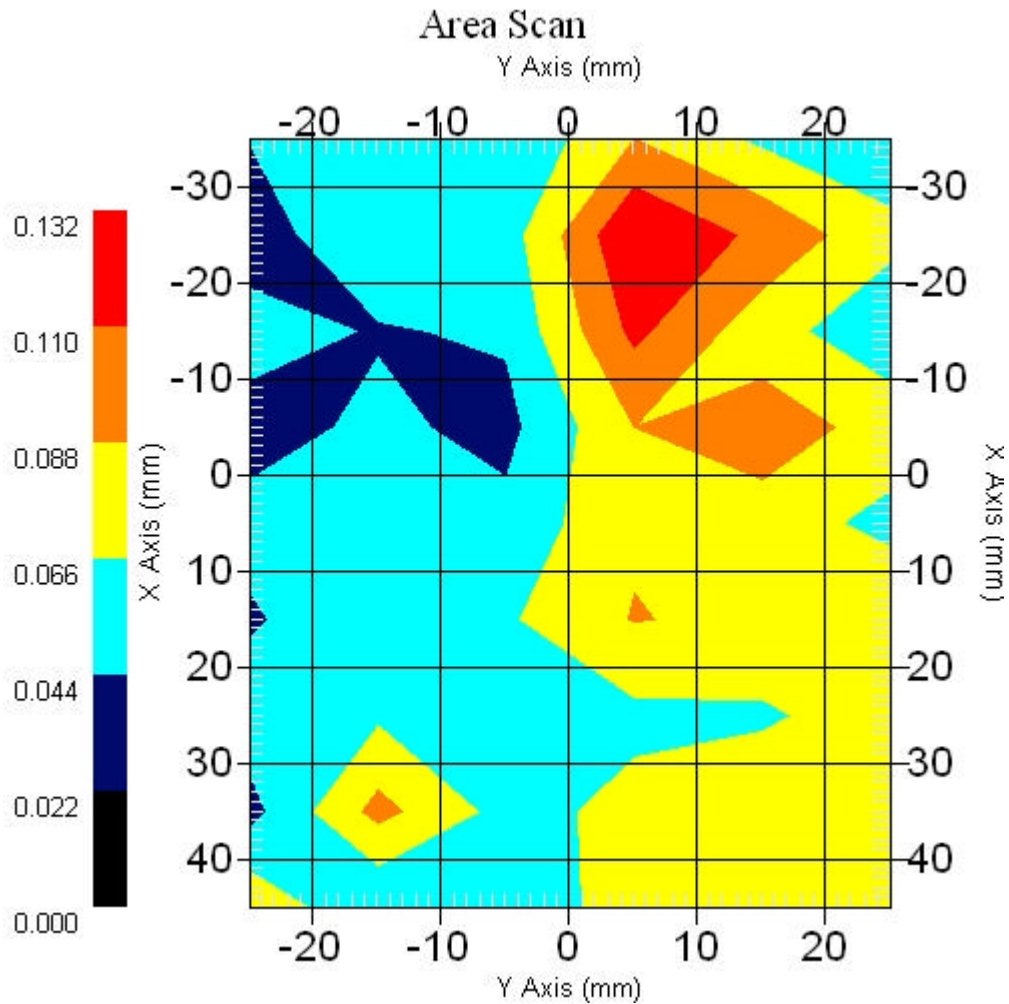
Measurement Data

Crest Factor : 1  
Scan Type : Complete  
Area Scan : 9x6x1 : Measurement x=10mm, y=10mm, z=4mm  
Zoom Scan : 9x9x13: Measurement x=4mm, y=4mm, z=2.5mm

Other Data

DUT Position : Touch  
Separation : 0  
Channel : Mid - 5785MHz

Power Drift-Start : 0.073 W/kg  
Power Drift-Finish: 0.074 W/kg  
Power Drift (%) : 1.369  
Picture :



1 gram SAR value : 0.143 W/kg  
10 gram SAR value : 0.086 W/kg  
Area Scan Peak SAR : 0.131 W/kg  
Zoom Scan Peak SAR : 0.320 W/kg