

■ 2437 MHz, EUT Position: Tablet,PP 836GSM

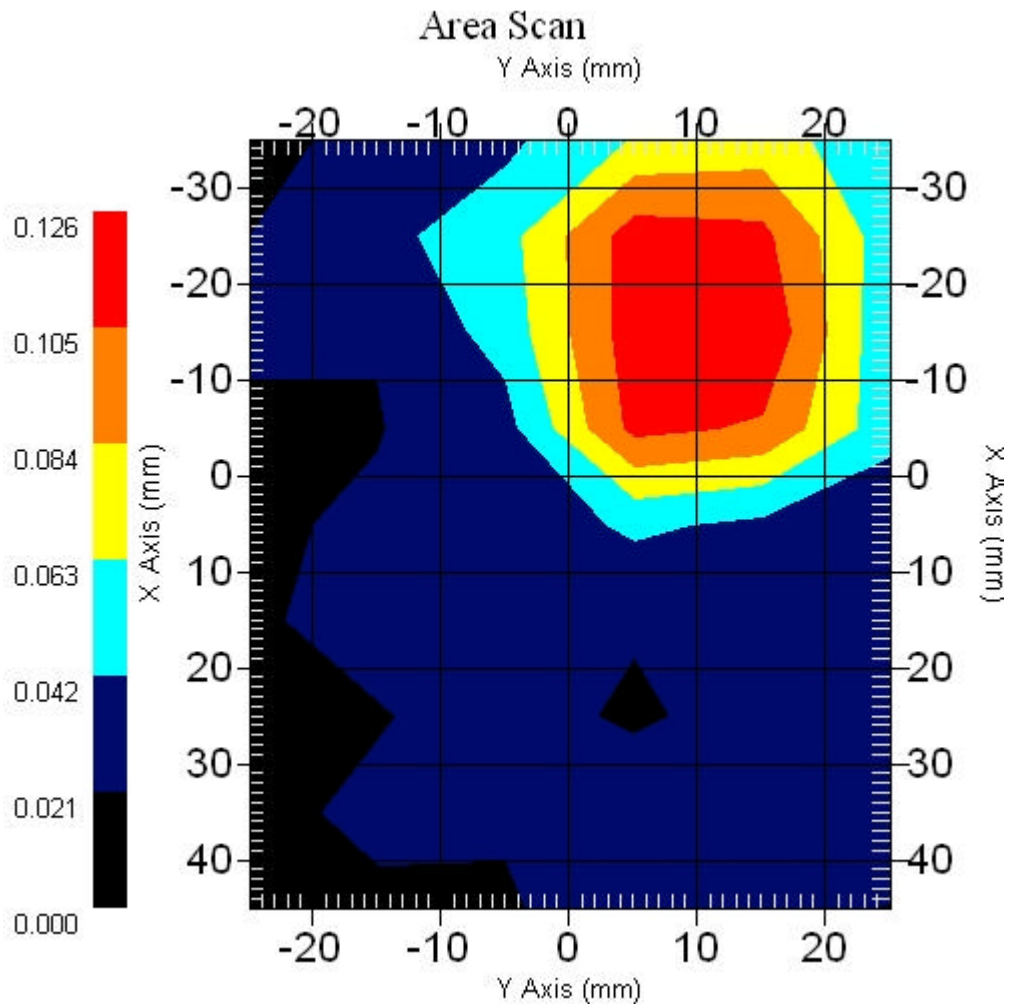
Measurement Data

Crest Factor : 1
Scan Type : Complete
Area Scan : 9x6x1 : Measurement x=10mm, y=10mm, z=4mm
Zoom Scan : 5x5x8 : Measurement x=8mm, y=8mm, z=4mm

Other Data

DUT Position : Touch
Separation : 0
Channel : Mid - 2437MHz

Power Drift-Start : 0.044 W/kg
Power Drift-Finish: 0.044 W/kg
Power Drift (%) : -0.778
Picture :



1 gram SAR value : 0.127 W/kg
10 gram SAR value : 0.065 W/kg
Area Scan Peak SAR : 0.123 W/kg
Zoom Scan Peak SAR : 0.280 W/kg

■ 2437 MHz, EUT Position: Tablet,SL 836GSM

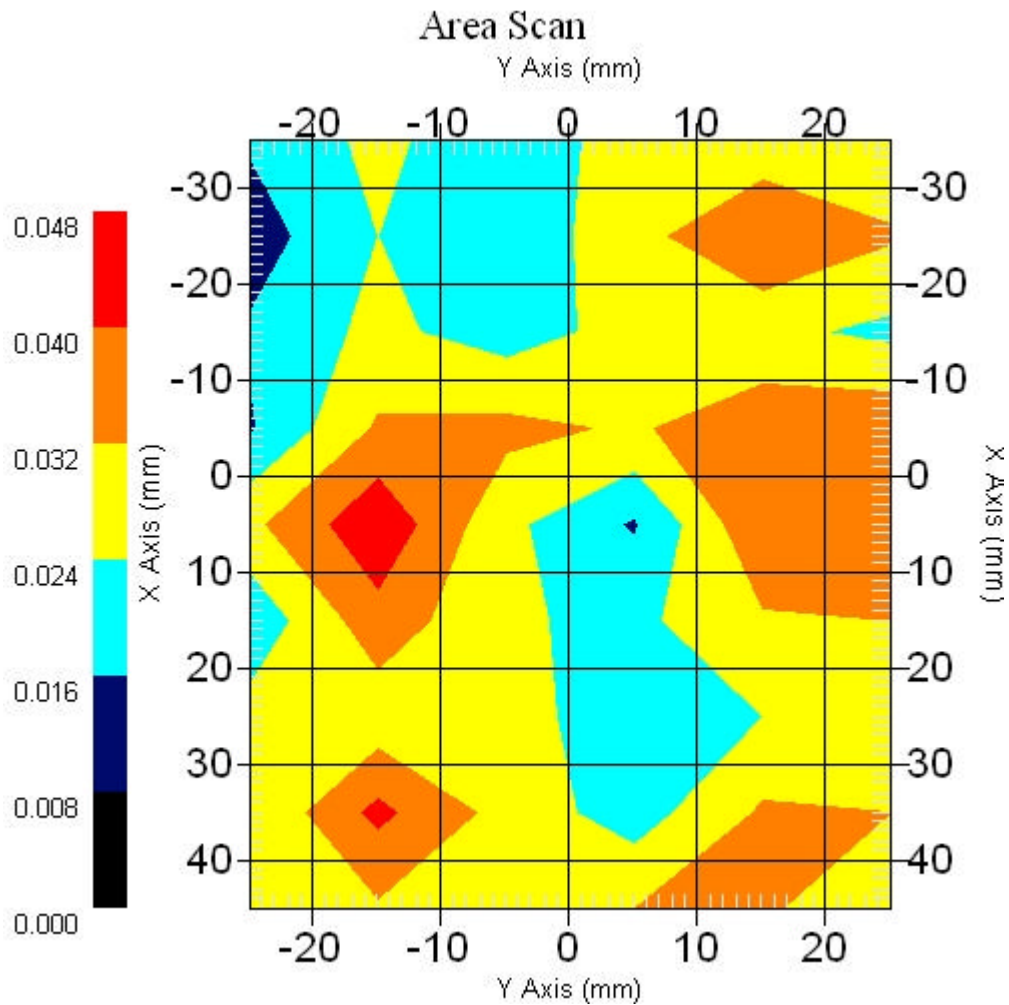
Measurement Data

Crest Factor : 1
Scan Type : Complete
Area Scan : 9x6x1 : Measurement x=10mm, y=10mm, z=4mm
Zoom Scan : 5x5x8 : Measurement x=8mm, y=8mm, z=4mm

Other Data

DUT Position : Touch
Separation : 0
Channel : Mid - 2437MHz

Power Drift-Start : 0.038 W/kg
Power Drift-Finish: 0.037 W/kg
Power Drift (%) : 2.631
Picture :



1 gram SAR value : 0.039 W/kg
10 gram SAR value : 0.031 W/kg
Area Scan Peak SAR : 0.046 W/kg
Zoom Scan Peak SAR : 0.081 W/kg

■ 2437 MHz, EUT Position: Tablet,SP 836GSM

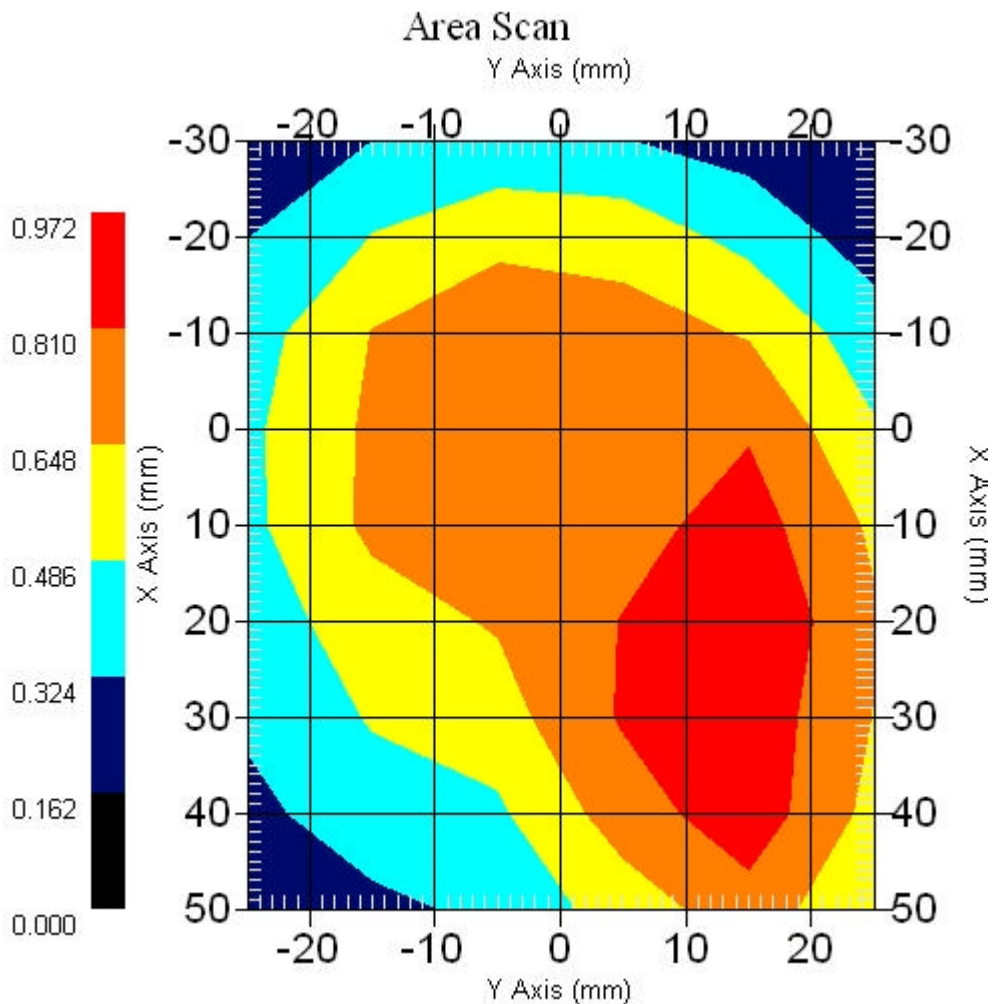
Measurement Data

Crest Factor : 1
Scan Type : Complete
Area Scan : 9x6x1 : Measurement x=10mm, y=10mm, z=4mm
Zoom Scan : 5x5x8 : Measurement x=8mm, y=8mm, z=4mm

Other Data

DUT Position : Touch
Separation : 0
Channel : Mid - 2437MHz

Power Drift-Start : 0.773 W/kg
Power Drift-Finish: 0.751 W/kg
Power Drift (%) : -2.923
Picture :



1 gram SAR value : 0.850 W/kg
10 gram SAR value : 0.676 W/kg
Area Scan Peak SAR : 0.971 W/kg
Zoom Scan Peak SAR : 1.071 W/kg

■ 2437 MHz, EUT Position: Laptop 836 EGSM

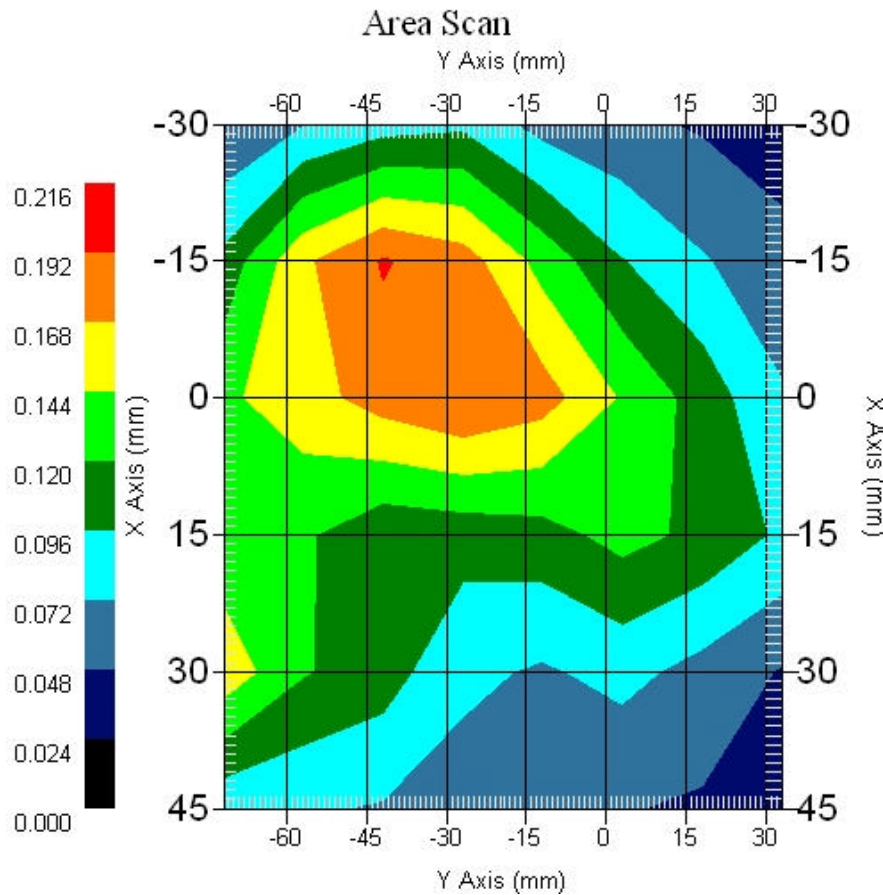
Measurement Data

Crest Factor : 1
Scan Type : Complete
Area Scan : 6x8x1 : Measurement x=15mm, y=15mm, z=4mm
Zoom Scan : 5x5x8 : Measurement x=8mm, y=8mm, z=4mm

Other Data

DUT Position : Touch
Separation : 0
Channel : Mid - 2437MHz

Power Drift-Start : 0.145 W/kg
Power Drift-Finish: 0.148 W/kg
Power Drift (%) : 2.413
Picture :



1 gram SAR value : 0.201 W/kg
10 gram SAR value : 0.153 W/kg
Area Scan Peak SAR : 0.194 W/kg
Zoom Scan Peak SAR : 0.260 W/kg

■ 2437 MHz, EUT Position: Laptop 836 EGSM

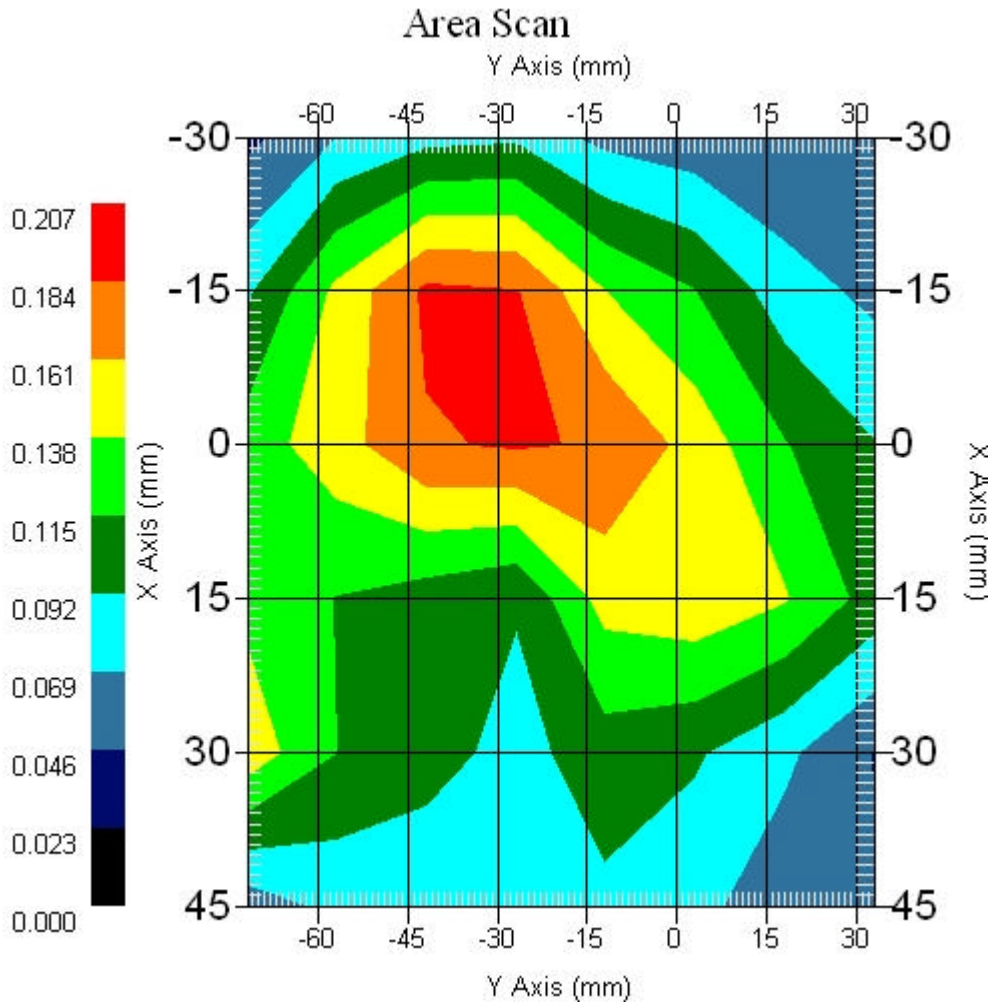
Measurement Data

Crest Factor : 1
Scan Type : Complete
Area Scan : 6x8x1 : Measurement x=15mm, y=15mm, z=4mm
Zoom Scan : 5x5x8 : Measurement x=8mm, y=8mm, z=4mm

Other Data

DUT Position : Touch
Separation : 0
Channel : Mid - 2437MHz

Power Drift-Start : 0.177 W/kg
Power Drift-Finish: 0.181 W/kg
Power Drift (%) : 2.259
Picture :



1 gram SAR value : 0.194 W/kg
10 gram SAR value : 0.144 W/kg
Area Scan Peak SAR : 0.188 W/kg
Zoom Scan Peak SAR : 0.260 W/kg

■ 2437 MHz, EUT Position: Tablet,PL 836 EGSM

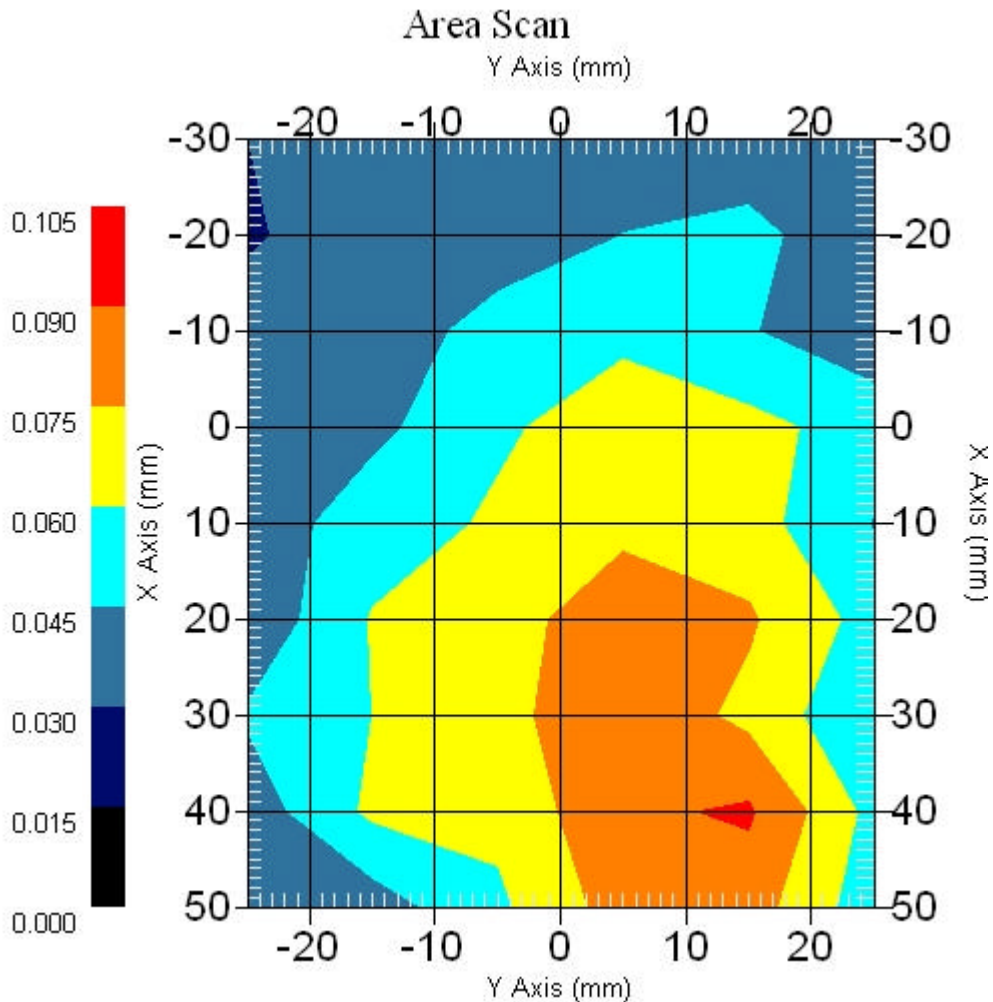
Measurement Data

Crest Factor : 1
Scan Type : Complete
Area Scan : 9x6x1 : Measurement x=10mm, y=10mm, z=4mm
Zoom Scan : 5x5x8 : Measurement x=8mm, y=8mm, z=4mm

Other Data

DUT Position : Touch
Separation : 0
Channel : Mid - 2437MHz

Power Drift-Start : 0.068 W/kg
Power Drift-Finish: 0.068 W/kg
Power Drift (%) : -0.112
Picture :



1 gram SAR value : 0.103 W/kg
10 gram SAR value : 0.074 W/kg
Area Scan Peak SAR : 0.092 W/kg
Zoom Scan Peak SAR : 0.163 W/kg

■ 2437 MHz, EUT Position: Tablet,PP 836 EGSM

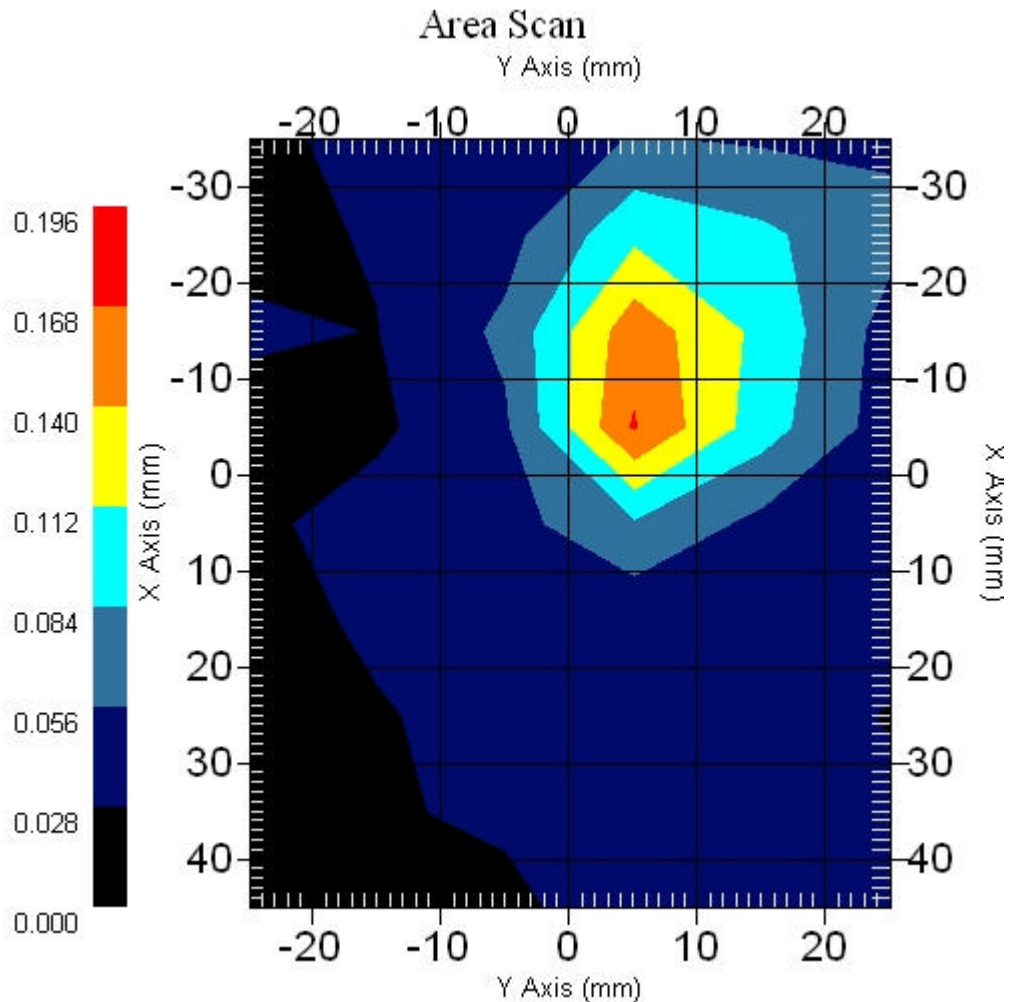
Measurement Data

Crest Factor : 1
Scan Type : Complete
Area Scan : 9x6x1 : Measurement x=10mm, y=10mm, z=4mm
Zoom Scan : 5x5x8 : Measurement x=8mm, y=8mm, z=4mm

Other Data

DUT Position : Touch
Separation : 0
Channel : Mid - 2437MHz

Power Drift-Start : 0.079 W/kg
Power Drift-Finish: 0.082 W/kg
Power Drift (%) : 3.797
Picture :



1 gram SAR value : 0.140 W/kg
10 gram SAR value : 0.071 W/kg
Area Scan Peak SAR : 0.170 W/kg
Zoom Scan Peak SAR : 0.290 W/kg

■ 2437 MHz, EUT Position: Tablet,SL 836 EGSM

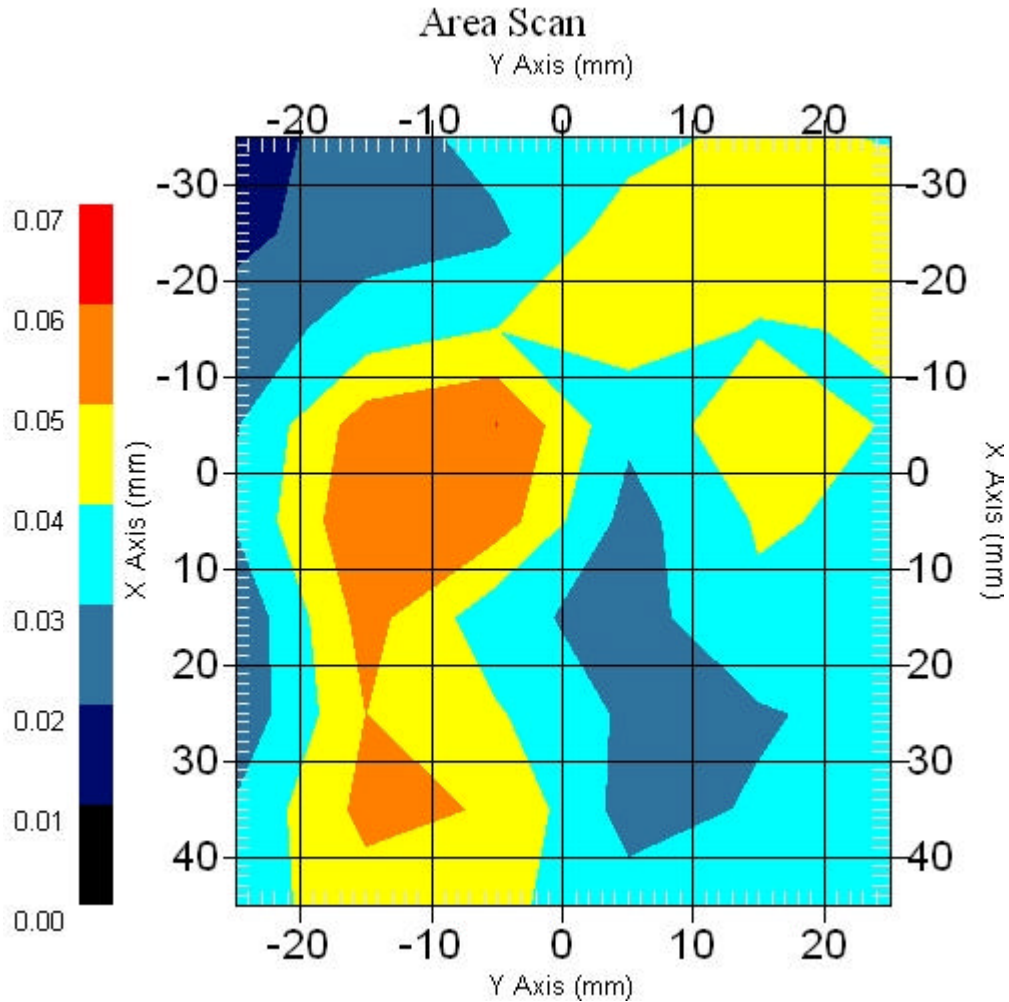
Measurement Data

Crest Factor : 1
Scan Type : Complete
Area Scan : 9x6x1 : Measurement x=10mm, y=10mm, z=4mm
Zoom Scan : 5x5x8 : Measurement x=8mm, y=8mm, z=4mm

Other Data

DUT Position : Touch
Separation : 0
Channel : Mid - 2437MHz

Power Drift-Start : 0.038 W/kg
Power Drift-Finish: 0.037 W/kg
Power Drift (%) : -2.631
Picture :



1 gram SAR value : 0.054 W/kg
10 gram SAR value : 0.044 W/kg
Area Scan Peak SAR : 0.060 W/kg
Zoom Scan Peak SAR : 0.110 W/kg

■ 2437 MHz, EUT Position: Tablet,SP 836 EGSM

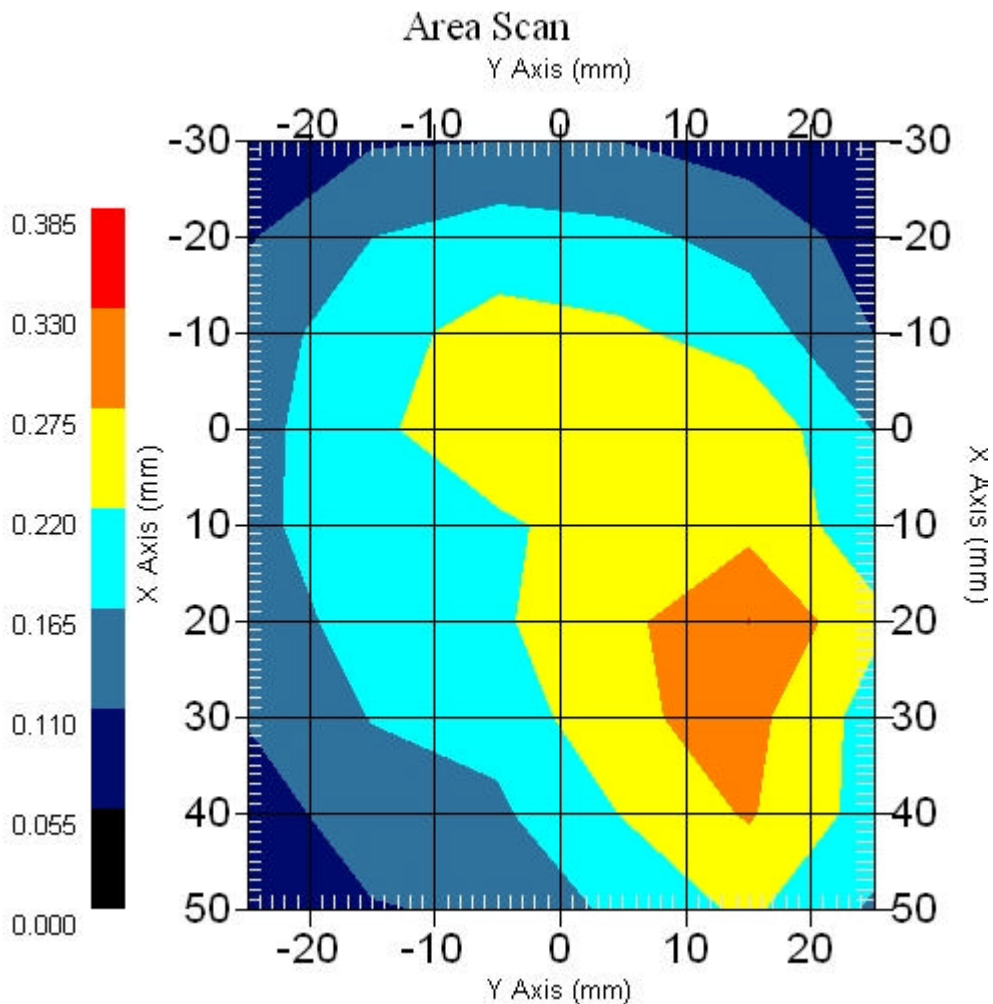
Measurement Data

Crest Factor : 1
Scan Type : Complete
Area Scan : 9x6x1 : Measurement x=10mm, y=10mm, z=4mm
Zoom Scan : 5x5x8 : Measurement x=8mm, y=8mm, z=4mm

Other Data

DUT Position : Touch
Separation : 0
Channel : Mid - 2437MHz

Power Drift-Start : 0.271 W/kg
Power Drift-Finish: 0.271 W/kg
Power Drift (%) : 0.012
Picture :



1 gram SAR value : 0.280 W/kg
10 gram SAR value : 0.227 W/kg
Area Scan Peak SAR : 0.331 W/kg
Zoom Scan Peak SAR : 0.350 W/kg

■ 2437 MHz, EUT Position: Laptop 836 UMTS

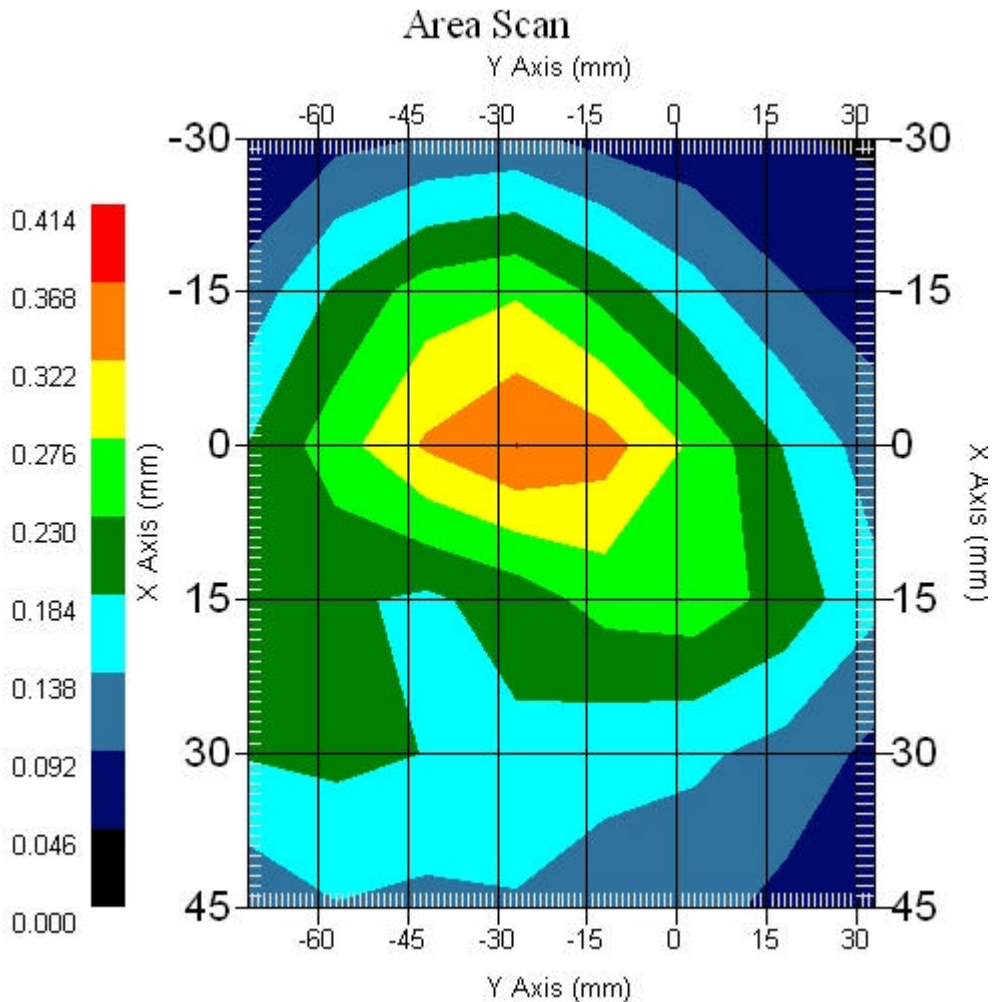
Measurement Data

Crest Factor : 1
Scan Type : Complete
Area Scan : 6x8x1 : Measurement x=15mm, y=15mm, z=4mm
Zoom Scan : 5x5x8 : Measurement x=8mm, y=8mm, z=4mm

Other Data

DUT Position : Touch
Separation : 0
Channel : Mid - 2437MHz

Power Drift-Start : 0.292 W/kg
Power Drift-Finish: 0.280 W/kg
Power Drift (%) : -4.076
Picture :



1 gram SAR value : 0.346 W/kg
10 gram SAR value : 0.243 W/kg
Area Scan Peak SAR : 0.369 W/kg
Zoom Scan Peak SAR : 0.520 W/kg

■ 2437 MHz, EUT Position: Laptop 836 UMTS

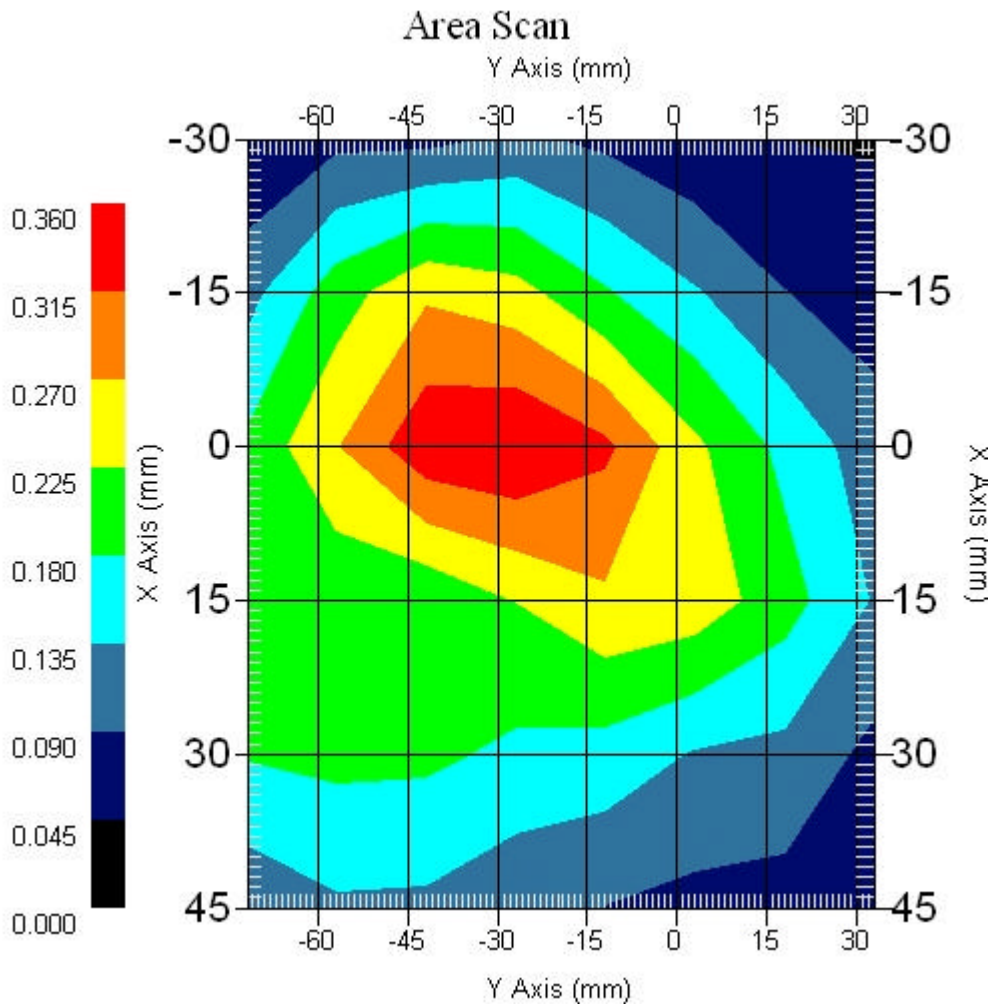
Measurement Data

Crest Factor : 1
Scan Type : Complete
Area Scan : 6x8x1 : Measurement x=15mm, y=15mm, z=4mm
Zoom Scan : 5x5x8 : Measurement x=8mm, y=8mm, z=4mm

Other Data

DUT Position : Touch
Separation : 0
Channel : Mid - 2437MHz

Power Drift-Start : 0.260 W/kg
Power Drift-Finish: 0.253 W/kg
Power Drift (%) : -2.889
Picture :



1 gram SAR value : 0.342 W/kg
10 gram SAR value : 0.242 W/kg
Area Scan Peak SAR : 0.360 W/kg
Zoom Scan Peak SAR : 0.470 W/kg

■ 2437 MHz, EUT Position: Tablet,PL 836 UMTS

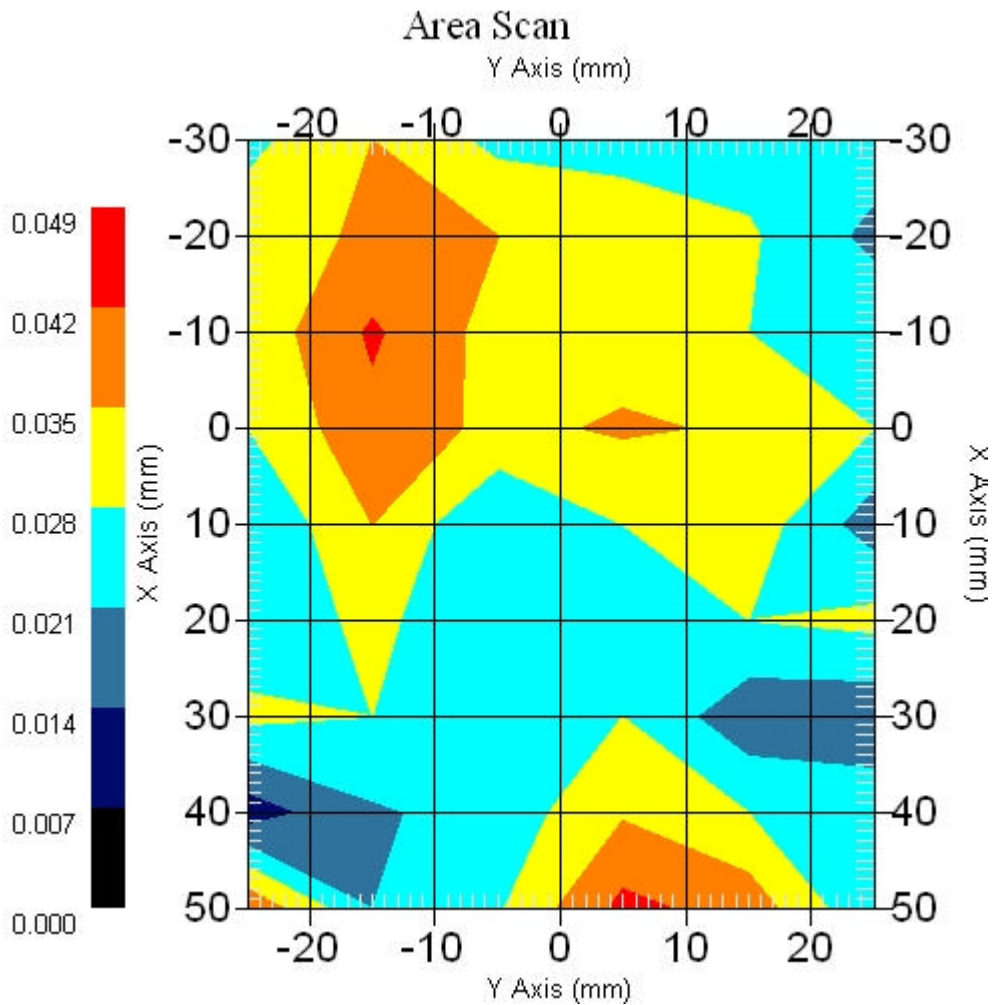
Measurement Data

Crest Factor : 1
Scan Type : Complete
Area Scan : 9x6x1 : Measurement x=10mm, y=10mm, z=4mm
Zoom Scan : 5x5x8 : Measurement x=8mm, y=8mm, z=4mm

Other Data

DUT Position : Touch
Separation : 0
Channel : Mid - 2437MHz

Power Drift-Start : 0.038 W/kg
Power Drift-Finish: 0.038 W/kg
Power Drift (%) : 0.146
Picture :



1 gram SAR value : 0.052 W/kg
10 gram SAR value : 0.035 W/kg
Area Scan Peak SAR : 0.044 W/kg
Zoom Scan Peak SAR : 0.082 W/kg

■ 2437 MHz, EUT Position: Tablet,PP 836 UMTS

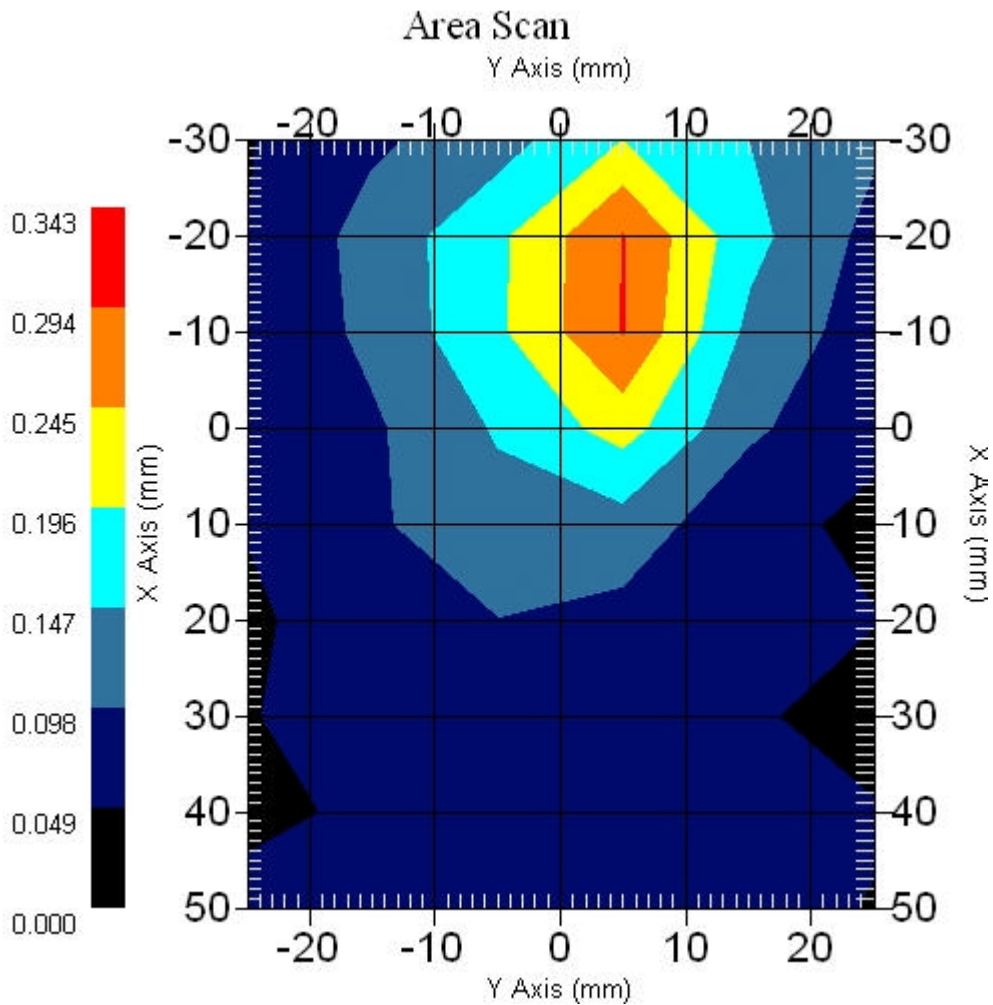
Measurement Data

Crest Factor : 1
Scan Type : Complete
Area Scan : 9x6x1 : Measurement x=10mm, y=10mm, z=4mm
Zoom Scan : 5x5x8 : Measurement x=8mm, y=8mm, z=4mm

Other Data

DUT Position : Touch
Separation : 0
Channel : Mid - 2437MHz

Power Drift-Start : 0.190 W/kg
Power Drift-Finish: 0.182 W/kg
Power Drift (%) : -4.275
Picture :



1 gram SAR value : 0.261 W/kg
10 gram SAR value : 0.142 W/kg
Area Scan Peak SAR : 0.297 W/kg
Zoom Scan Peak SAR : 0.540 W/kg

■ 2437 MHz, EUT Position: Tablet,SL 836 UMTS

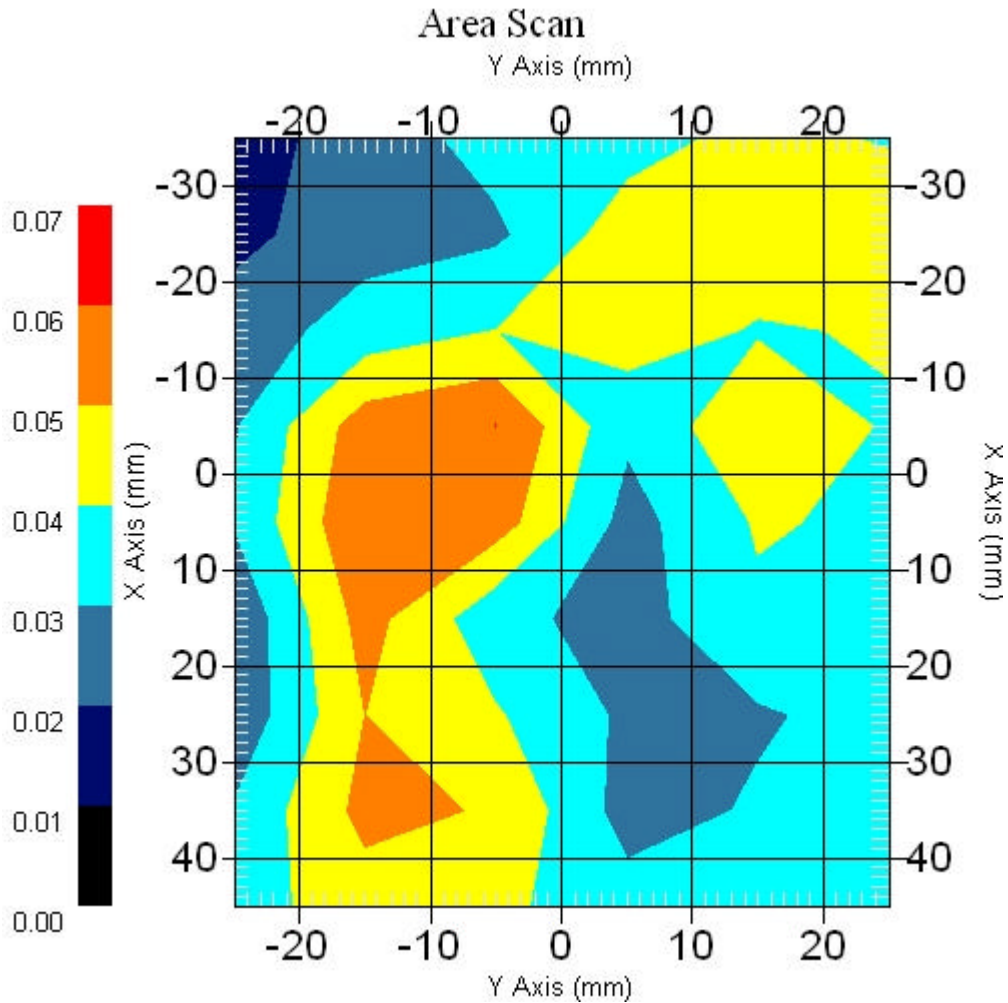
Measurement Data

Crest Factor : 1
Scan Type : Complete
Area Scan : 9x6x1 : Measurement x=10mm, y=10mm, z=4mm
Zoom Scan : 5x5x8 : Measurement x=8mm, y=8mm, z=4mm

Other Data

DUT Position : Touch
Separation : 0
Channel : Mid - 2437MHz

Power Drift-Start : 0.038 W/kg
Power Drift-Finish: 0.037 W/kg
Power Drift (%) : -2.631
Picture :



1 gram SAR value : 0.054 W/kg
10 gram SAR value : 0.044 W/kg
Area Scan Peak SAR : 0.060 W/kg
Zoom Scan Peak SAR : 0.110 W/kg

■ 2437 MHz, EUT Position: Tablet,SP 836 UMTS

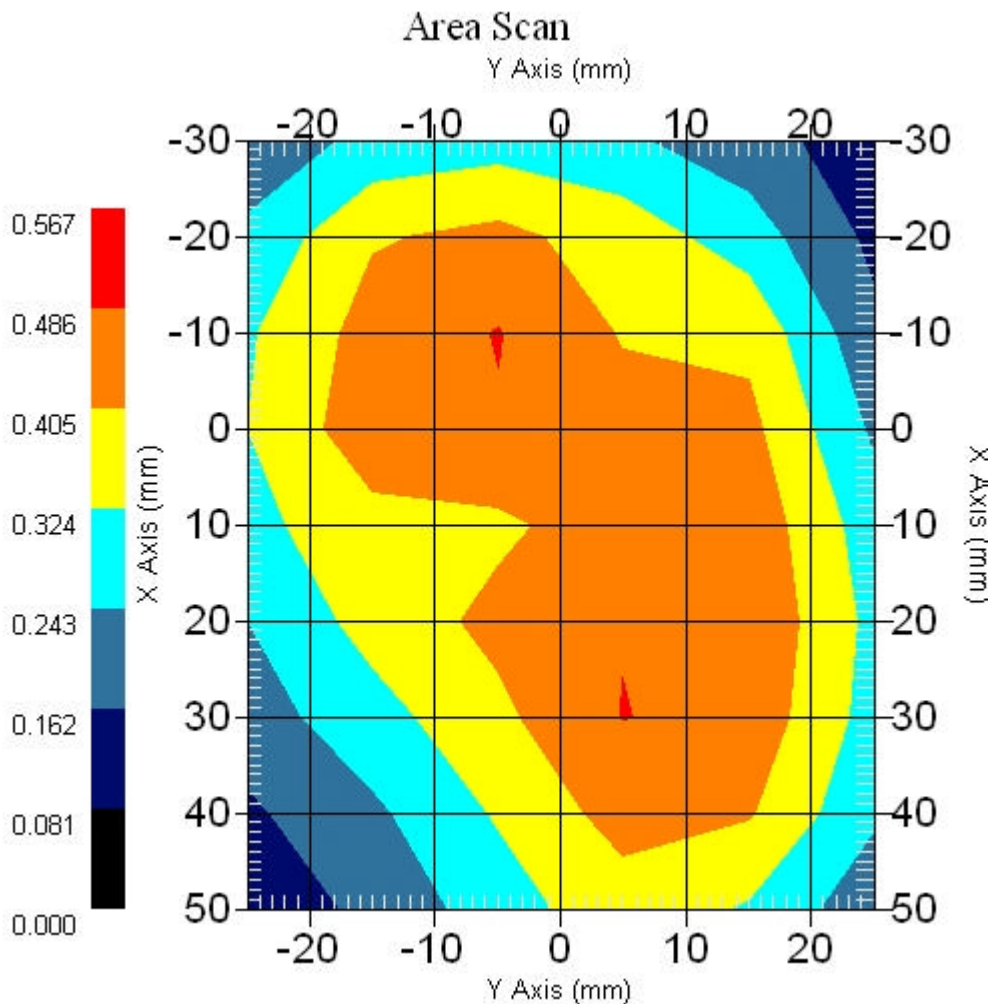
Measurement Data

Crest Factor : 1
Scan Type : Complete
Area Scan : 9x6x1 : Measurement x=10mm, y=10mm, z=4mm
Zoom Scan : 5x5x8 : Measurement x=8mm, y=8mm, z=4mm

Other Data

DUT Position : Touch
Separation : 0
Channel : Mid - 2437MHz

Power Drift-Start : 0.456 W/kg
Power Drift-Finish: 0.463 W/kg
Power Drift (%) : 1.580
Picture :



1 gram SAR value : 0.468 W/kg
10 gram SAR value : 0.351 W/kg
Area Scan Peak SAR : 0.489 W/kg
Zoom Scan Peak SAR : 0.640 W/kg

■ **2437 MHz, EUT Position: Tablet,SP 1880 GSM**

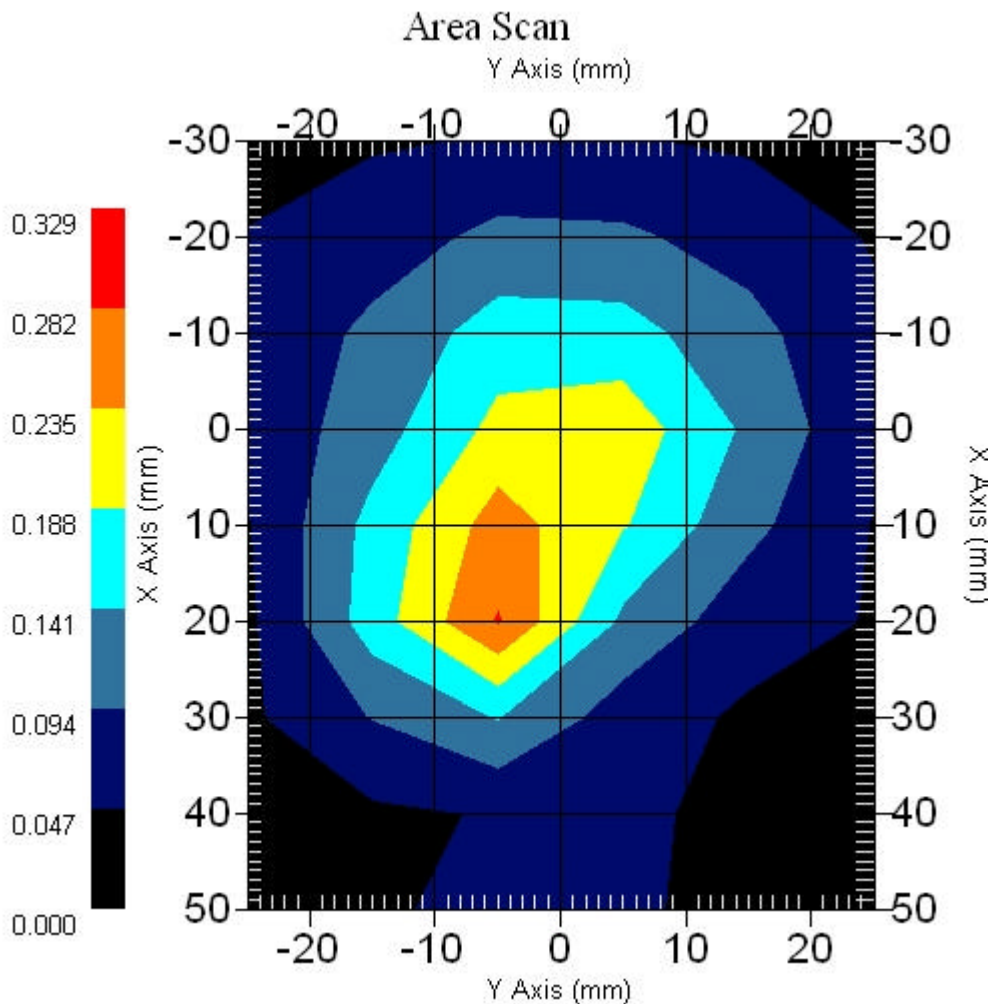
Measurement Data

Crest Factor : 1
Scan Type : Complete
Area Scan : 9x6x1 : Measurement x=10mm, y=10mm, z=4mm
Zoom Scan : 5x5x8 : Measurement x=8mm, y=8mm, z=4mm

Other Data

DUT Position : Touch
Separation : 0
Channel : Mid - 2437MHz

Power Drift-Start : 0.231 W/kg
Power Drift-Finish: 0.235 W/kg
Power Drift (%) : 1.731
Picture :



1 gram SAR value : 0.241 W/kg
10 gram SAR value : 0.139 W/kg
Area Scan Peak SAR : 0.285 W/kg
Zoom Scan Peak SAR : 0.420 W/kg

■ 2437 MHz, EUT Position: Tablet,SP 1880 EGSM

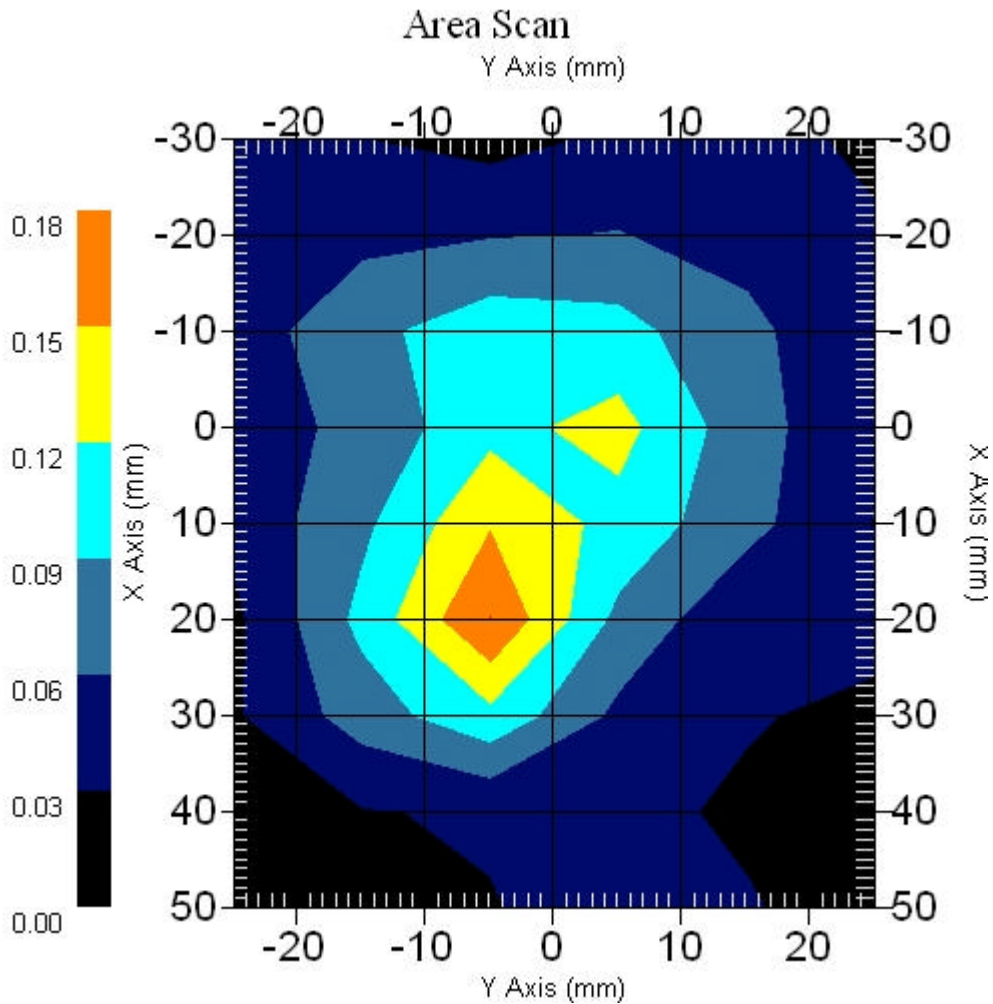
Measurement Data

Crest Factor : 1
Scan Type : Complete
Area Scan : 9x6x1 : Measurement x=10mm, y=10mm, z=4mm
Zoom Scan : 5x5x8 : Measurement x=8mm, y=8mm, z=4mm

Other Data

DUT Position : Touch
Separation : 0
Channel : Mid - 2437MHz

Power Drift-Start : 0.153 W/kg
Power Drift-Finish: 0.153 W/kg
Power Drift (%) : -0.002
Picture :



1 gram SAR value : 0.151 W/kg
10 gram SAR value : 0.091 W/kg
Area Scan Peak SAR : 0.180 W/kg
Zoom Scan Peak SAR : 0.280 W/kg

■ 2437 MHz, EUT Position: Tablet,SP 1880 UMTS

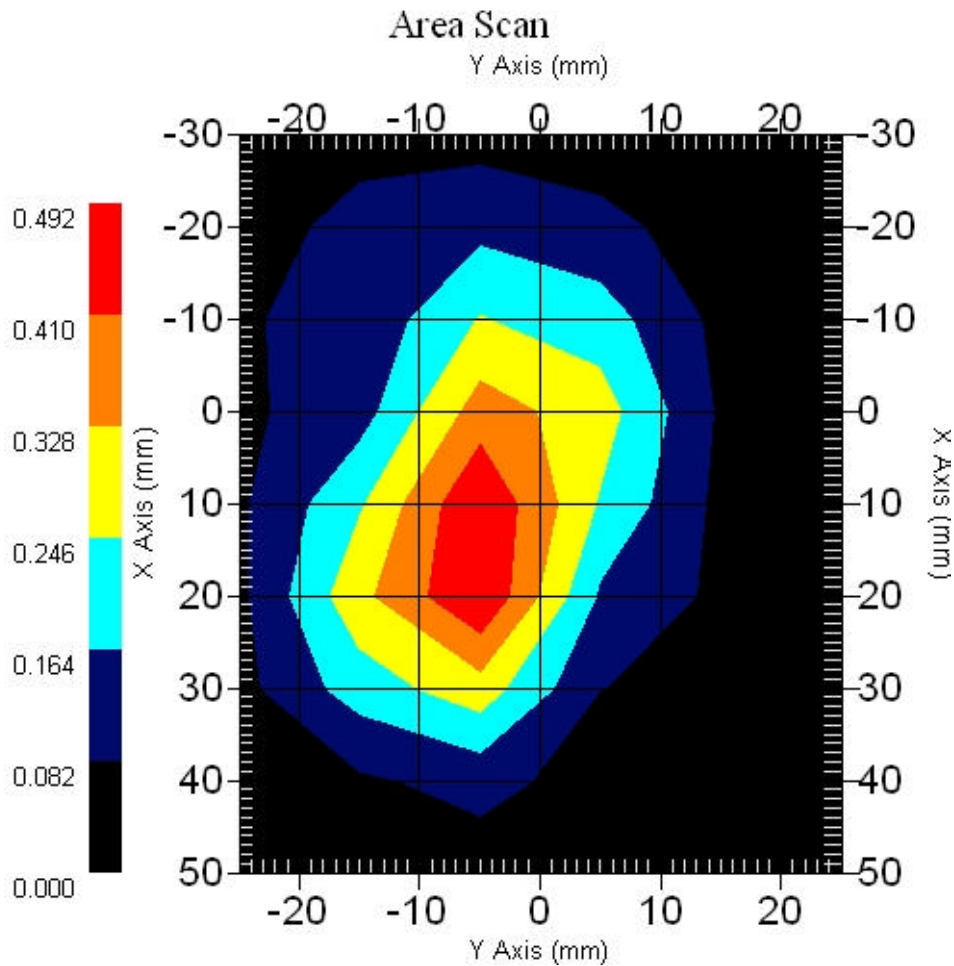
Measurement Data

Crest Factor : 1
Scan Type : Complete
Area Scan : 9x6x1 : Measurement x=10mm, y=10mm, z=4mm
Zoom Scan : 5x5x8 : Measurement x=8mm, y=8mm, z=4mm

Other Data

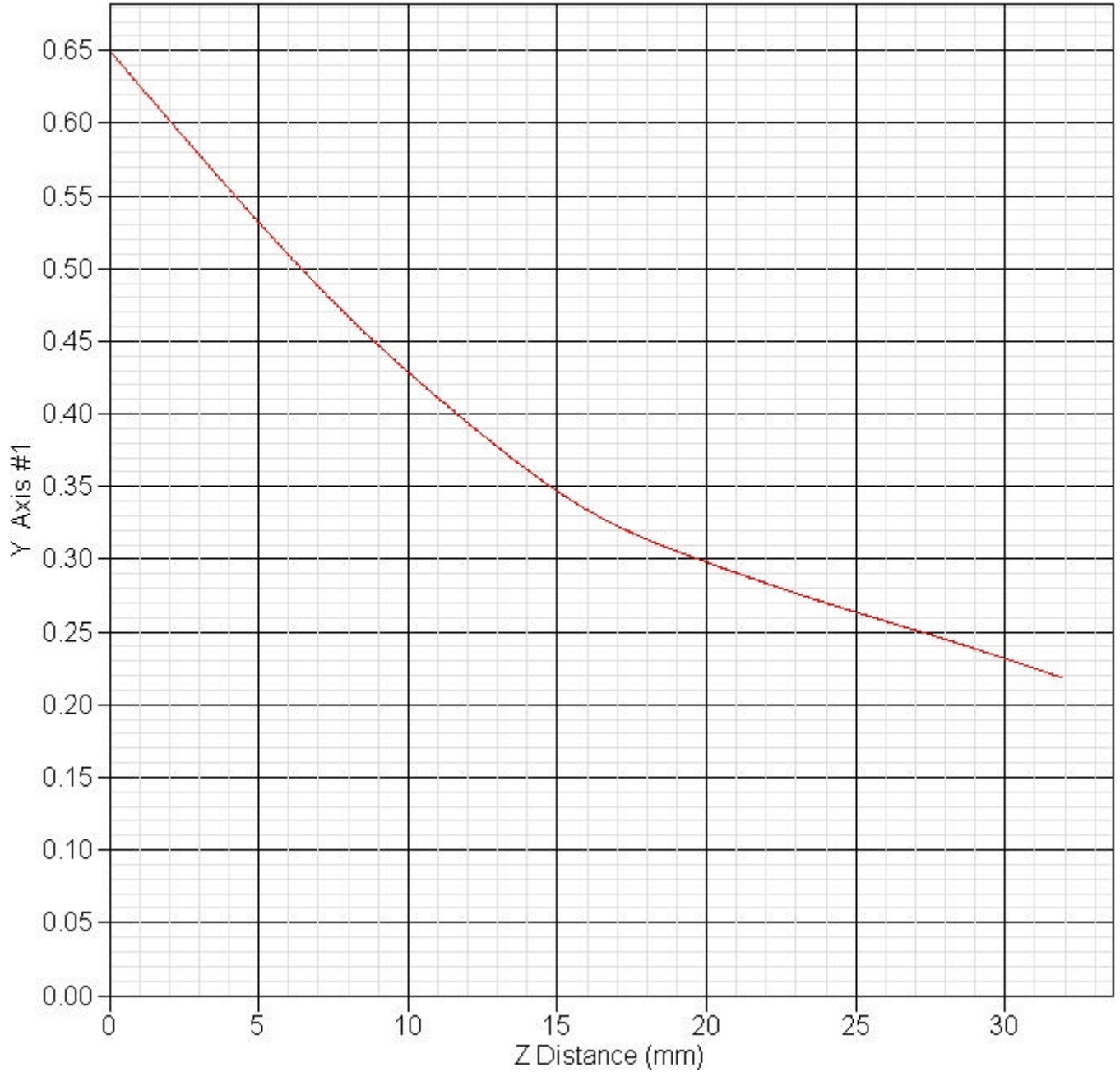
DUT Position : Touch
Separation : 0
Channel : Mid - 2437MHz

Power Drift-Start : 0.373 W/kg
Power Drift-Finish: 0.379 W/kg
Power Drift (%) : 1.741
Picture :



1 gram SAR value : 0.431 W/kg
10 gram SAR value : 0.222 W/kg
Area Scan Peak SAR : 0.491 W/kg
Zoom Scan Peak SAR : 0.830 W/kg

■ Z Axis : 802.11g 2437MHz, Position: Laptop, 836 GSM
SAR-Z Axis
at Hotspot x:-14.30 y:-37.00

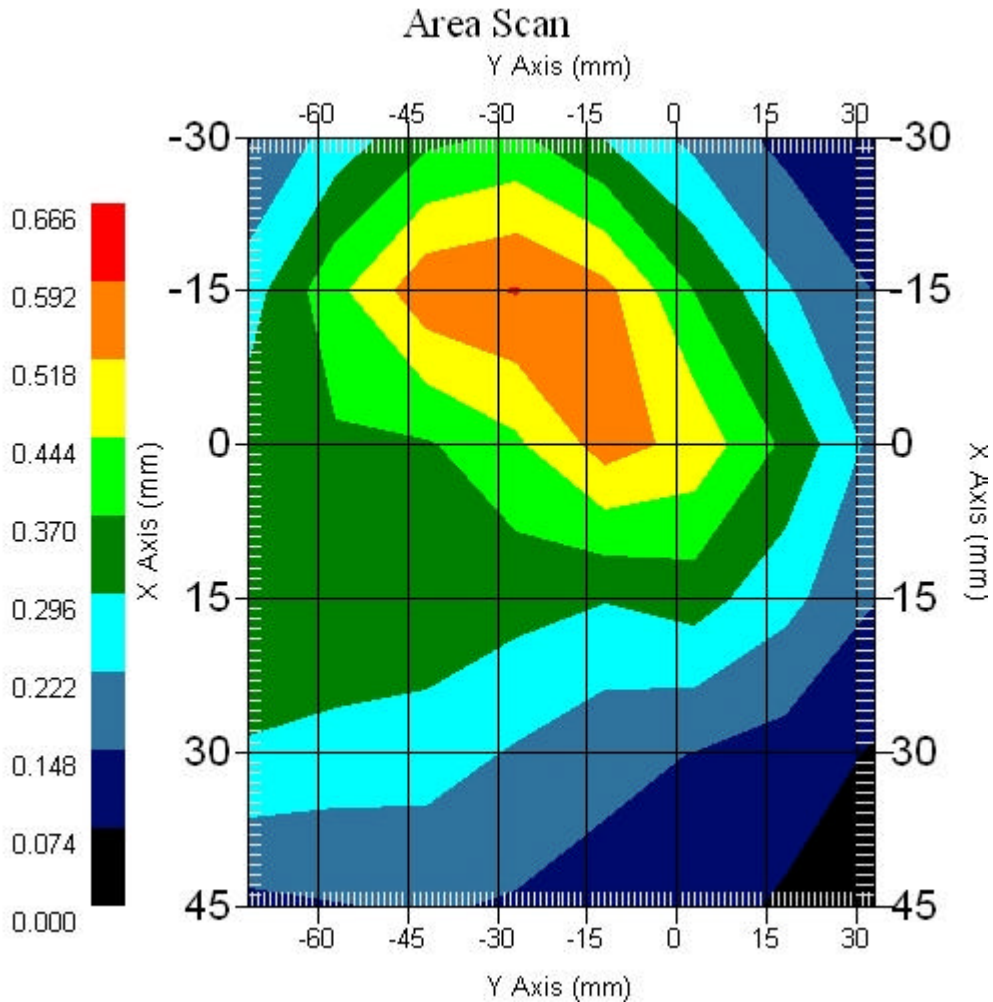


12.2 802.11g + WWAN Tosa (EV-DO) : FCCID N7N-MC5720 + Bluetooth

■ 2437 MHz, EUT Position: Laptop 836 EV-DO

Measurement Data

Crest Factor : 1
Scan Type : Complete
Area Scan : 6x8x1 : Measurement x=15mm, y=15mm, z=4mm
Zoom Scan : 5x5x8 : Measurement x=8mm, y=8mm, z=4mm
Other Data
DUT Position : Touch
Separation : 0
Channel : Mid - 2437MHz
Power Drift-Start : 0.494 W/kg
Power Drift-Finish: 0.511 W/kg
Power Drift (%) : 3.441



1 gram SAR value : 0.576 W/kg
10 gram SAR value : 0.419 W/kg
Area Scan Peak SAR : 0.595 W/kg
Zoom Scan Peak SAR : 0.790 W/kg

■ 2437 MHz, EUT Position: Laptop 836 EV-DO

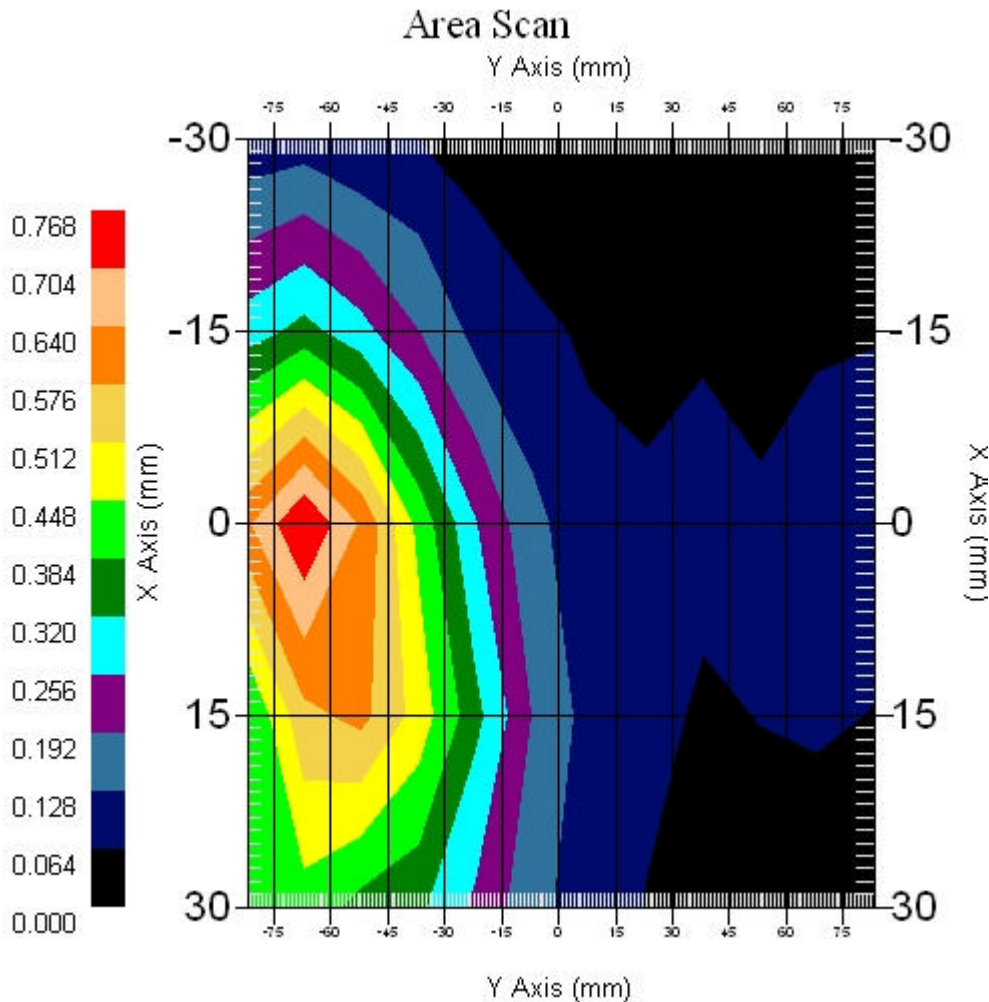
Measurement Data

Crest Factor : 1
Scan Type : Complete
Area Scan : 5x12x1 : Measurement x=15mm, y=15mm, z=4mm
Zoom Scan : 5x5x8 : Measurement x=8mm, y=8mm, z=4mm

Other Data

DUT Position : Touch
Separation : 0
Channel : Mid - 2437MHz

Power Drift-Start : 0.102 W/kg
Power Drift-Finish: 0.106 W/kg
Power Drift (%) : 4.625



1 gram SAR value : 0.616 W/kg
10 gram SAR value : 0.425 W/kg
Area Scan Peak SAR : 0.765 W/kg
Zoom Scan Peak SAR : 1.020 W/kg

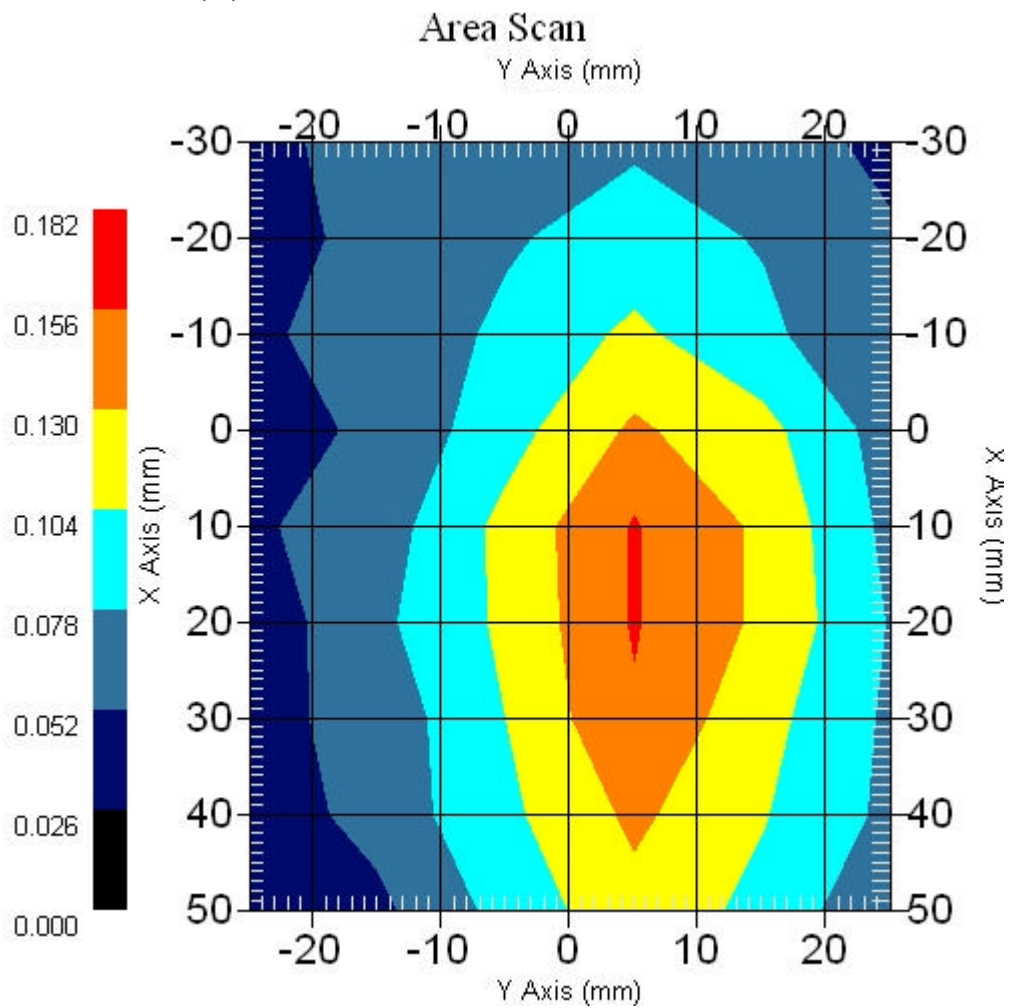
■ 2437 MHz, EUT Position: **Tablet,PL 836 EV-DO**

Measurement Data

Crest Factor : 1
Scan Type : Complete
Area Scan : 9x6x1 : Measurement x=10mm, y=10mm, z=4mm
Zoom Scan : 5x5x8 : Measurement x=8mm, y=8mm, z=4mm

DUT Position : Touch
Separation : 0
Channel : Mid - 2437MHz

Power Drift-Start : 0.125 W/kg
Power Drift-Finish: 0.122 W/kg
Power Drift (%) : -2.659



1 gram SAR value : 0.151 W/kg
10 gram SAR value : 0.111 W/kg
Area Scan Peak SAR : 0.158 W/kg
Zoom Scan Peak SAR : 0.230 W/kg

■ 2437 MHz, EUT Position: Tablet,PP 836 EV-DO

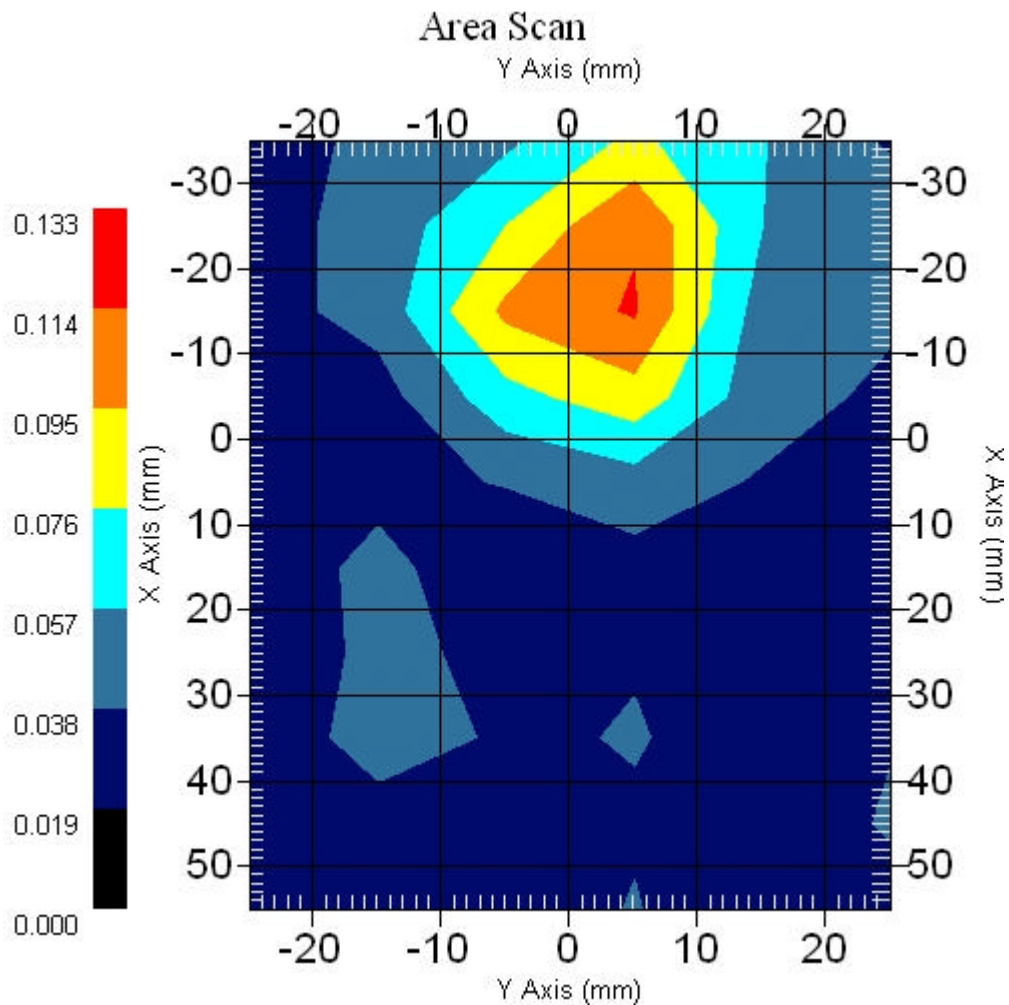
Measurement Data

Crest Factor : 1
Scan Type : Complete
Area Scan : 10x6x1 : Measurement x=10mm, y=10mm, z=4mm
Zoom Scan : 5x5x8 : Measurement x=8mm, y=8mm, z=4mm

Other Data

DUT Position : Touch
Separation : 0
Channel : Mid - 2437MHz

Power Drift-Start : 0.080 W/kg
Power Drift-Finish: 0.076 W/kg
Power Drift (%) : -5.000



1 gram SAR value : 0.116 W/kg
10 gram SAR value : 0.065 W/kg
Area Scan Peak SAR : 0.116 W/kg
Zoom Scan Peak SAR : 0.210 W/kg

■ 2437 MHz, EUT Position: Tablet,SL 836 EV-DO

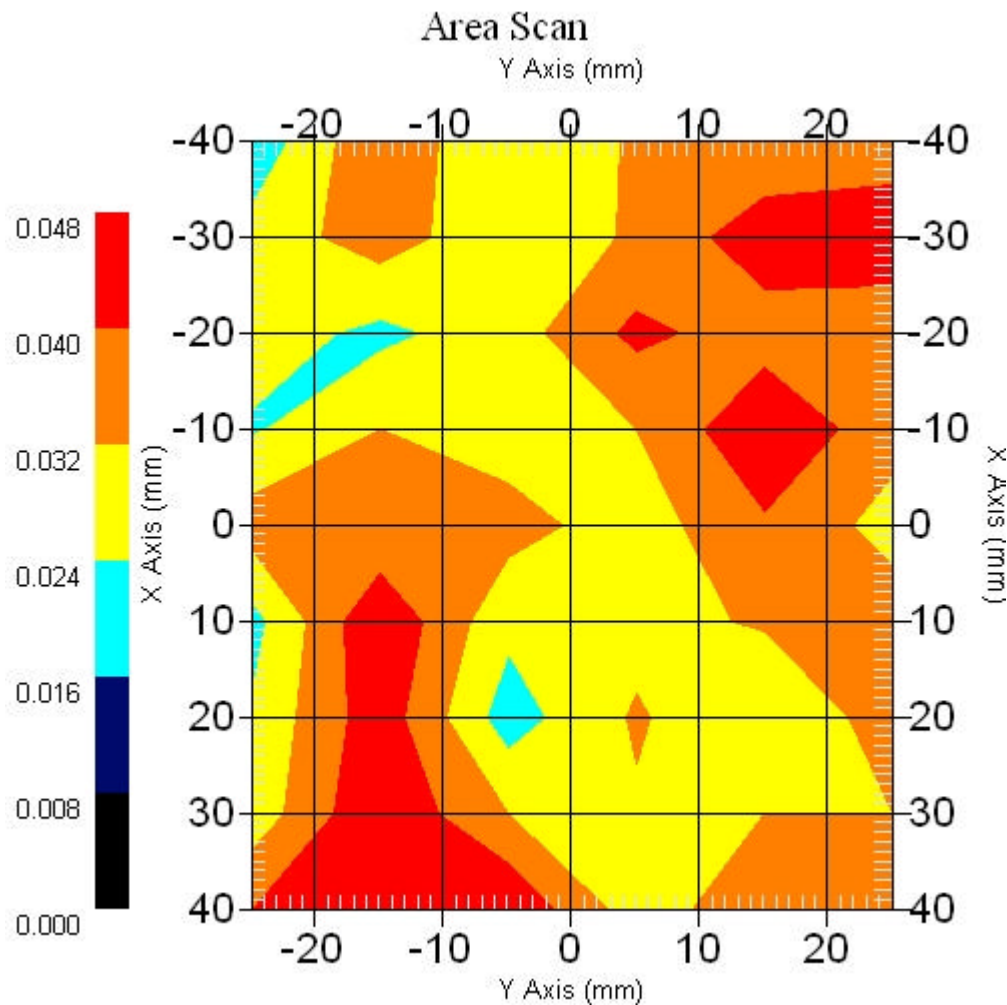
Measurement Data

Crest Factor : 1
Scan Type : Complete
Area Scan : 9x6x1 : Measurement x=10mm, y=10mm, z=4mm
Zoom Scan : 5x5x8 : Measurement x=8mm, y=8mm, z=4mm

Other Data

DUT Position : Touch
Separation : 0
Channel : Mid - 2437MHz

Power Drift-Start : 0.027 W/kg
Power Drift-Finish: 0.026 W/kg
Power Drift (%) : -3.057



1 gram SAR value : 0.051 W/kg
10 gram SAR value : 0.039 W/kg
Area Scan Peak SAR : 0.048 W/kg
Zoom Scan Peak SAR : 0.070 W/kg

■ 2437 MHz, EUT Position: Tablet,SP 836 EV-DO

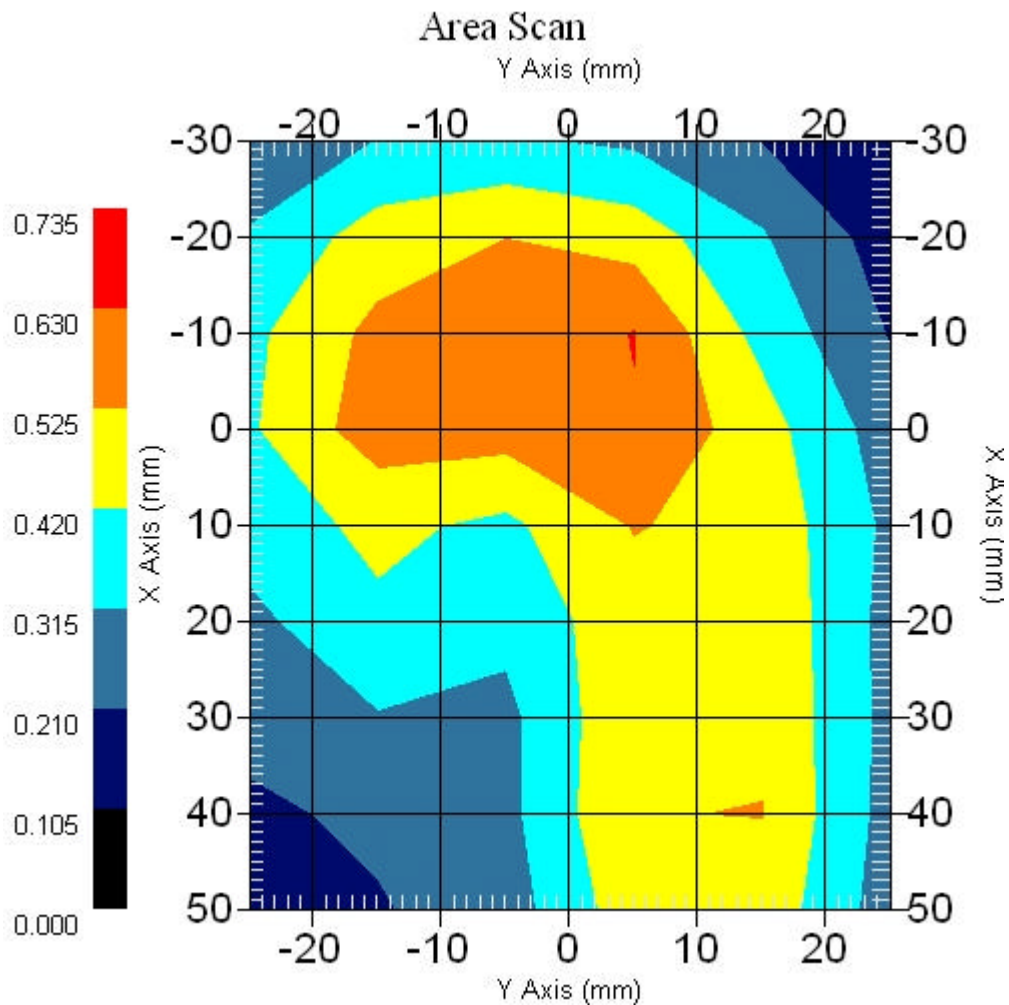
Measurement Data

Crest Factor : 1
Scan Type : Complete
Area Scan : 9x6x1 : Measurement x=10mm, y=10mm, z=4mm
Zoom Scan : 5x5x8 : Measurement x=8mm, y=8mm, z=4mm

Other Data

DUT Position : Touch
Separation : 0
Channel : Mid - 2437MHz

Power Drift-Start : 0.551 W/kg
Power Drift-Finish: 0.560 W/kg
Power Drift (%) : 1.715



1 gram SAR value : 0.625 W/kg
10 gram SAR value : 0.431 W/kg
Area Scan Peak SAR : 0.631 W/kg
Zoom Scan Peak SAR : 0.920 W/kg