

■ 2437 MHz, EUT Position: Laptop 836 UMTS

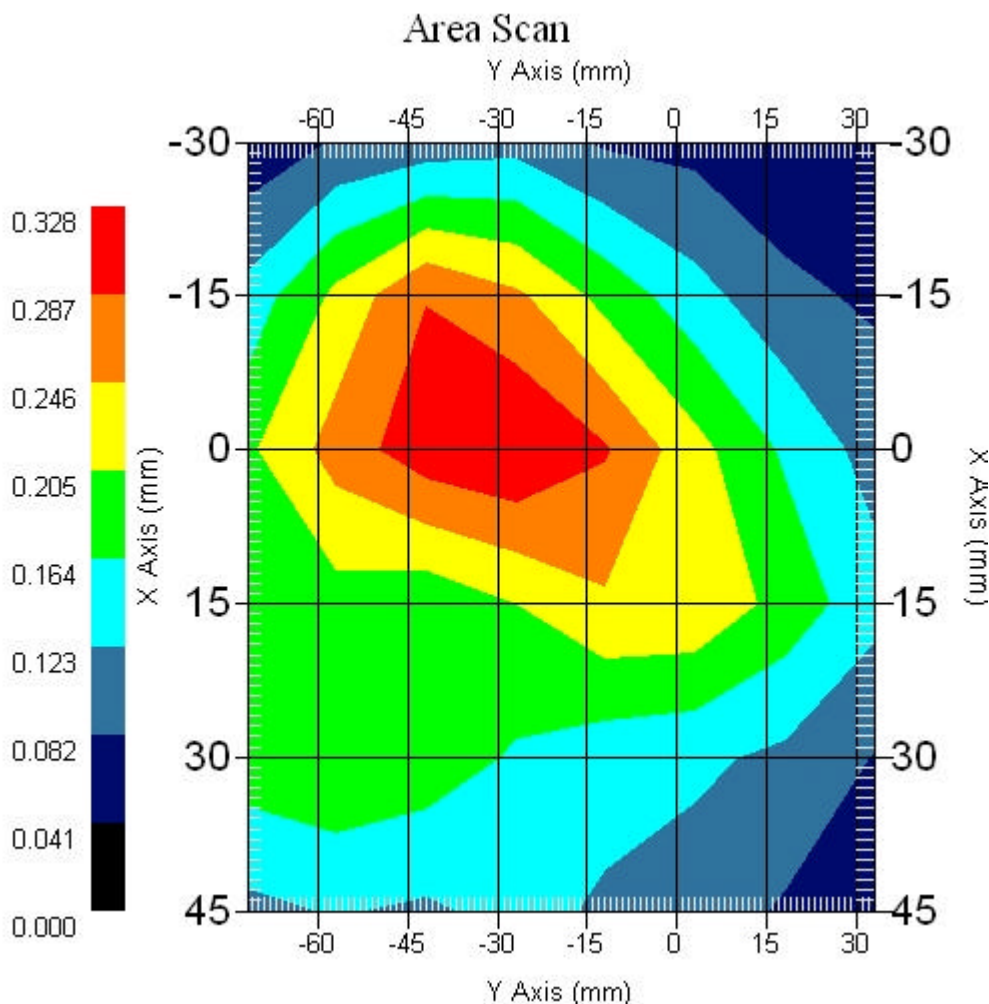
Measurement Data

Crest Factor : 1
Scan Type : Complete
Area Scan : 6x8x1 : Measurement x=15mm, y=15mm, z=4mm
Zoom Scan : 5x5x8 : Measurement x=8mm, y=8mm, z=4mm

Other Data

DUT Position : Touch
Separation : 0
Channel : Mid - 2437MHz

Power Drift-Start : 0.235 W/kg
Power Drift-Finish: 0.246 W/kg
Power Drift (%) : 4.681
Picture :



1 gram SAR value : 0.316 W/kg
10 gram SAR value : 0.232 W/kg
Area Scan Peak SAR : 0.328 W/kg
Zoom Scan Peak SAR : 0.400 W/kg

■ 2437 MHz, EUT Position: Laptop 836 UMTS

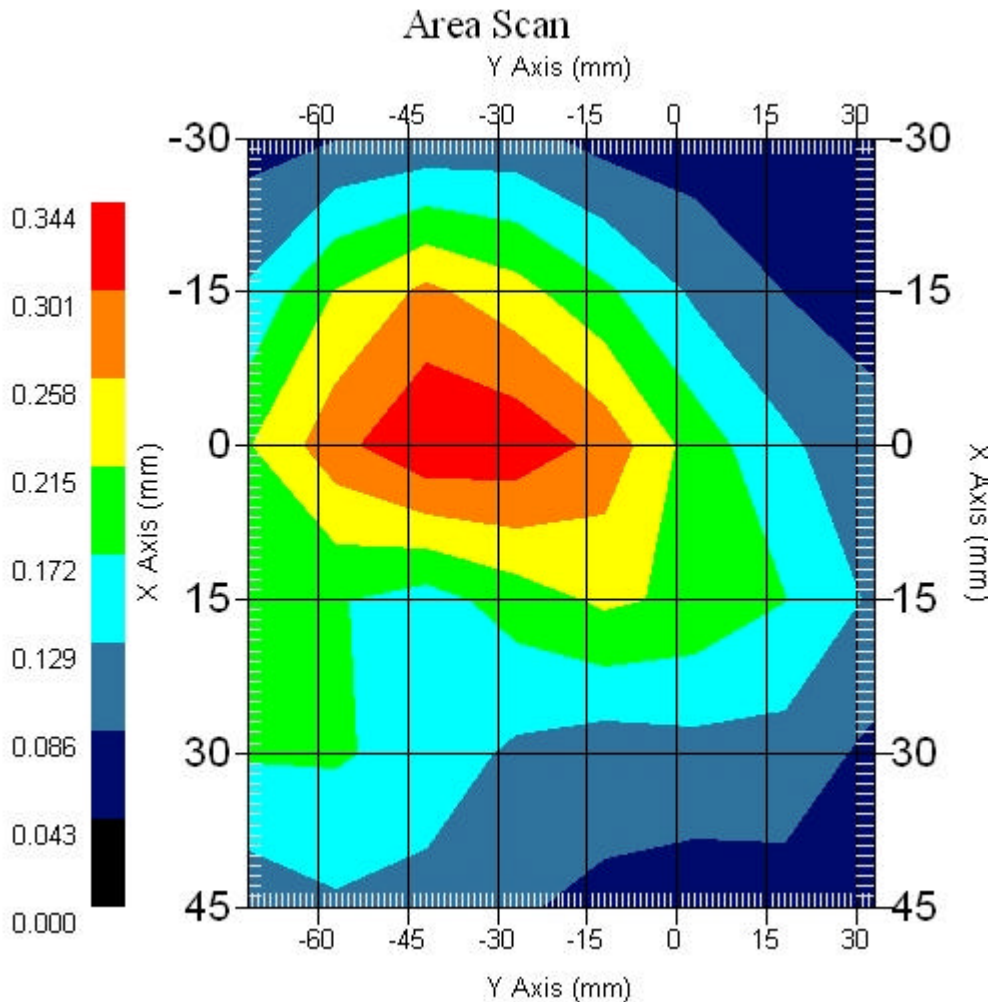
Measurement Data

Crest Factor : 1
Scan Type : Complete
Area Scan : 6x8x1 : Measurement x=15mm, y=15mm, z=4mm
Zoom Scan : 5x5x8 : Measurement x=8mm, y=8mm, z=4mm

Other Data

DUT Position : Touch
Separation : 0
Channel : Mid - 2437MHz

Power Drift-Start : 0.219 W/kg
Power Drift-Finish: 0.214 W/kg
Power Drift (%) : -2.571
Picture :



1 gram SAR value : 0.293 W/kg
10 gram SAR value : 0.223 W/kg
Area Scan Peak SAR : 0.341 W/kg
Zoom Scan Peak SAR : 0.470 W/kg

■ 2437 MHz, EUT Position: Tablet,PL 836 UMTS

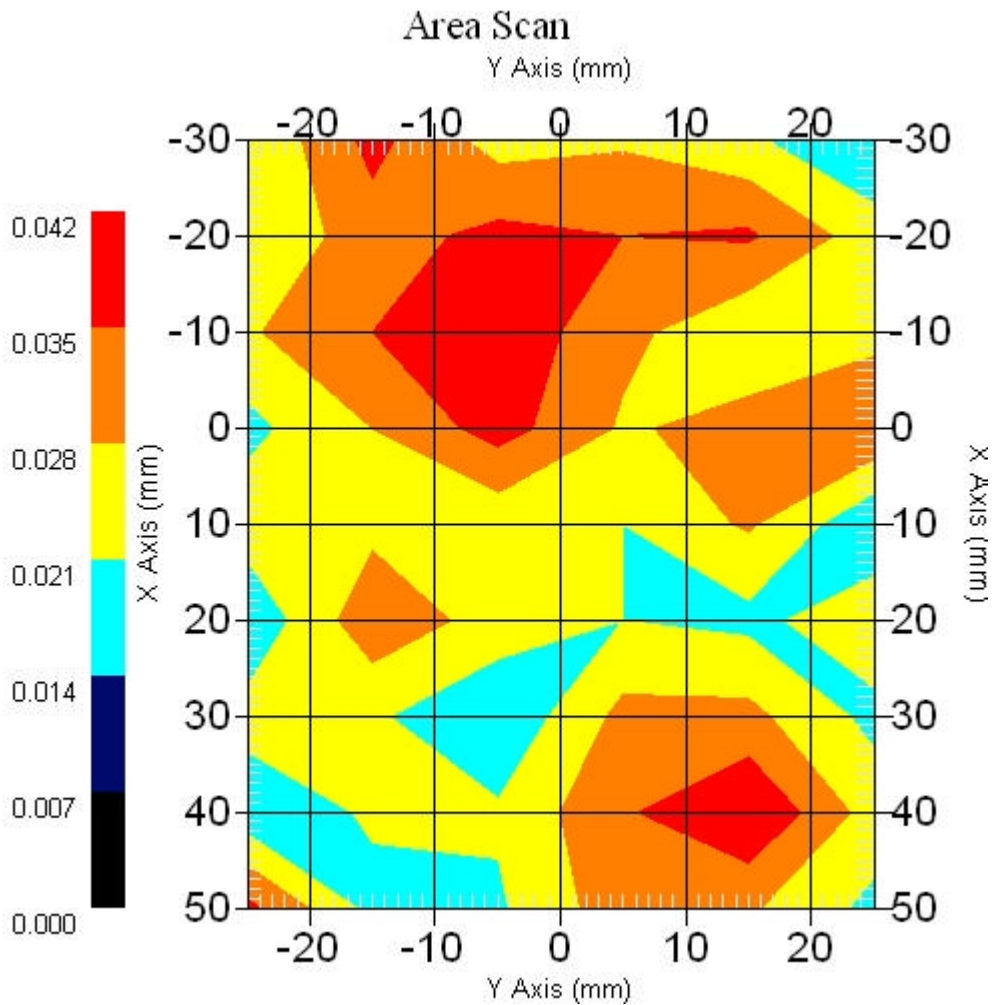
Measurement Data

Crest Factor : 1
Scan Type : Complete
Area Scan : 9x6x1 : Measurement x=10mm, y=10mm, z=4mm
Zoom Scan : 5x5x8 : Measurement x=8mm, y=8mm, z=4mm

Other Data

DUT Position : Touch
Separation : 0
Channel : Mid - 2437MHz

Power Drift-Start : 0.042 W/kg
Power Drift-Finish: 0.043 W/kg
Power Drift (%) : 2.380
Picture :



1 gram SAR value : 0.041 W/kg
10 gram SAR value : 0.030 W/kg
Area Scan Peak SAR : 0.042 W/kg
Zoom Scan Peak SAR : 0.120 W/kg

■ 2437 MHz, EUT Position: Tablet,PP 836 UMTS

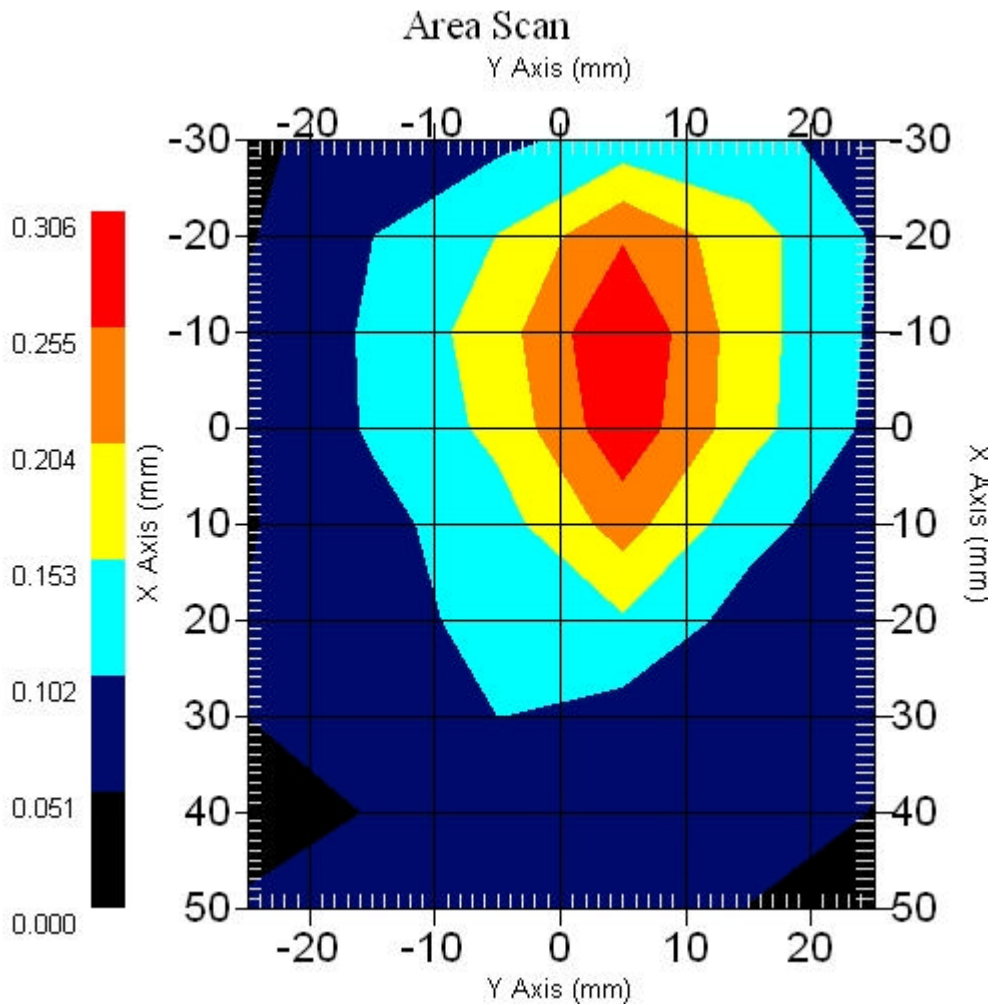
Measurement Data

Crest Factor : 1
Scan Type : Complete
Area Scan : 9x6x1 : Measurement x=10mm, y=10mm, z=4mm
Zoom Scan : 5x5x8 : Measurement x=8mm, y=8mm, z=4mm

Other Data

DUT Position : Touch
Separation : 0
Channel : Mid - 2437MHz

Power Drift-Start : 0.307 W/kg
Power Drift-Finish: 0.306 W/kg
Power Drift (%) : -3.257
Picture :



1 gram SAR value : 0.271 W/kg
10 gram SAR value : 0.149 W/kg
Area Scan Peak SAR : 0.305 W/kg
Zoom Scan Peak SAR : 0.530 W/kg

■ 2437 MHz, EUT Position: Tablet,SL 836 UMTS

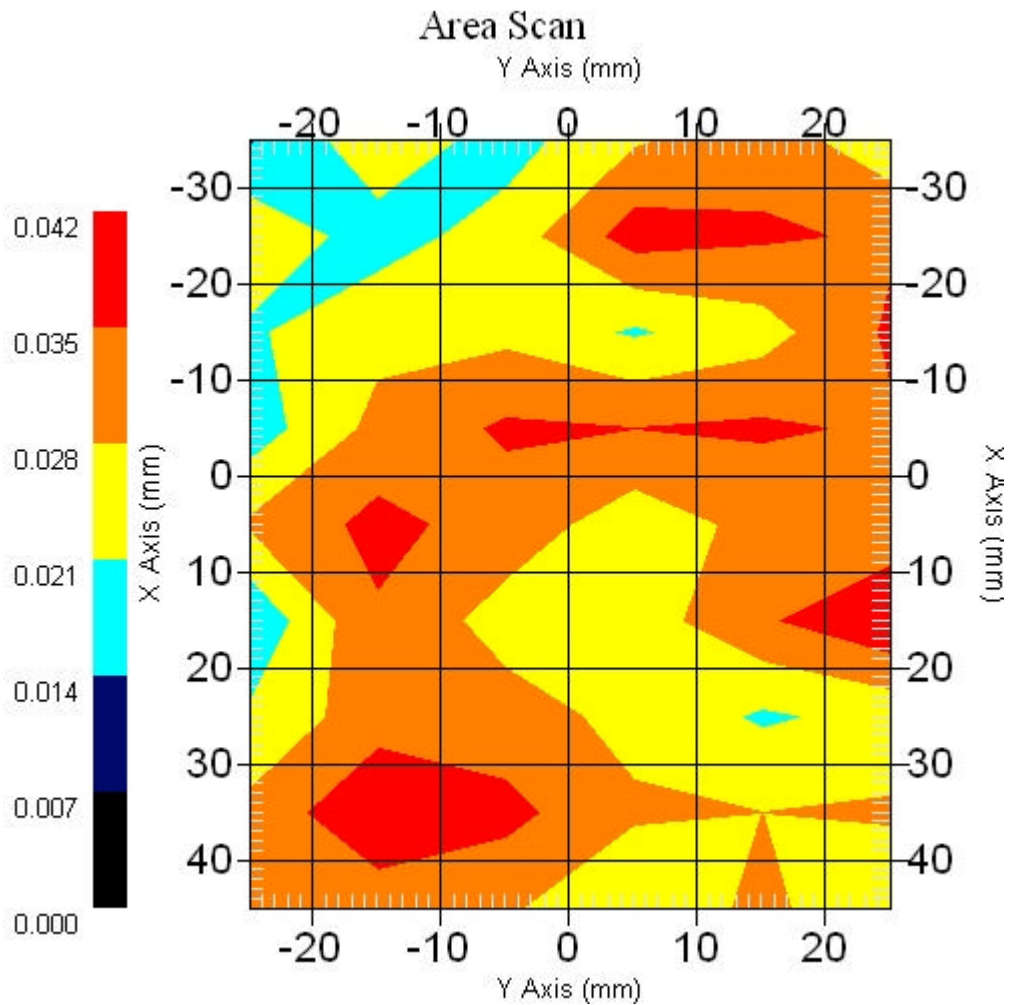
Measurement Data

Crest Factor : 1
Scan Type : Complete
Area Scan : 9x6x1 : Measurement x=10mm, y=10mm, z=4mm
Zoom Scan : 5x5x8 : Measurement x=8mm, y=8mm, z=4mm

Other Data

DUT Position : Touch
Separation : 0
Channel : Mid - 2437MHz

Power Drift-Start : 0.025 W/kg
Power Drift-Finish: 0.026 W/kg
Power Drift (%) : 4.184
Picture :



1 gram SAR value : 0.065 W/kg
10 gram SAR value : 0.047 W/kg
Area Scan Peak SAR : 0.041 W/kg
Zoom Scan Peak SAR : 0.100 W/kg

■ 2437 MHz, EUT Position: Tablet,SP 836 UMTS

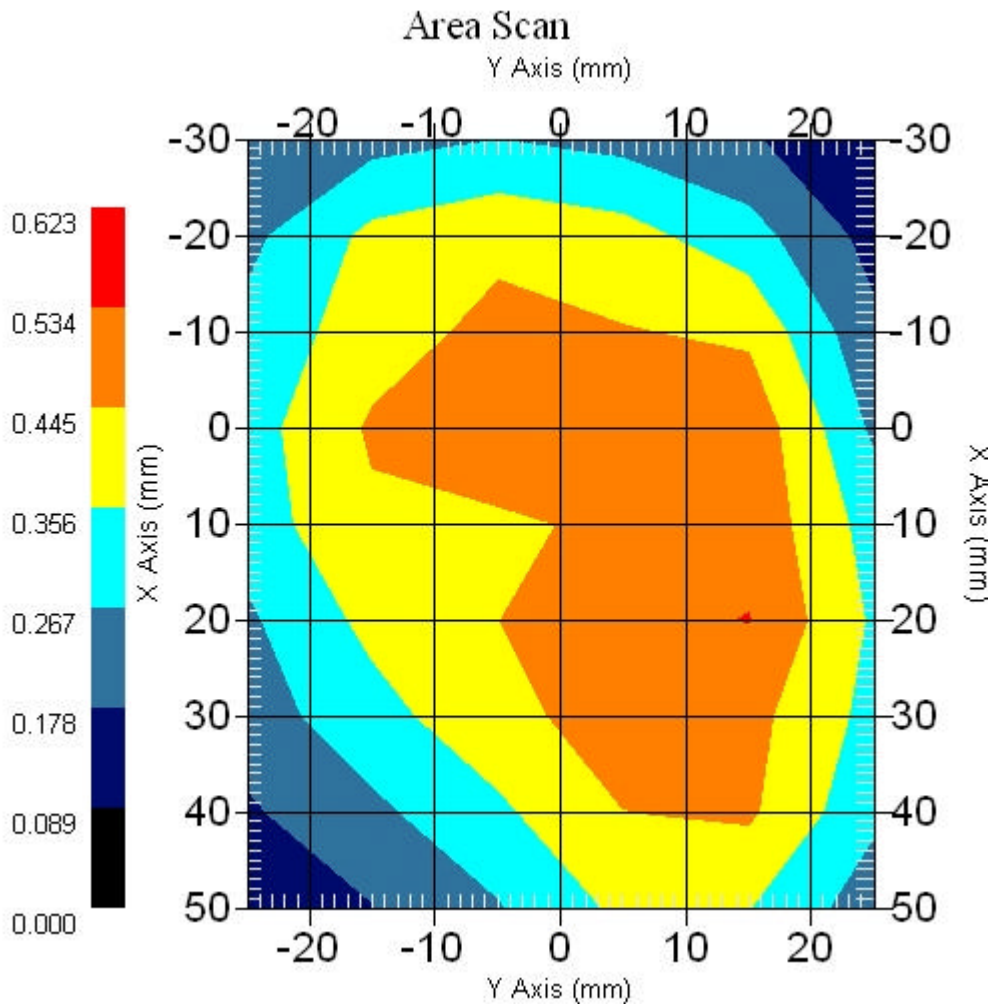
Measurement Data

Crest Factor : 1
Scan Type : Complete
Area Scan : 9x6x1 : Measurement x=10mm, y=10mm, z=4mm
Zoom Scan : 5x5x8 : Measurement x=8mm, y=8mm, z=4mm

Other Data

DUT Position : Touch
Separation : 0
Channel : Mid - 2437MHz

Power Drift-Start : 0.526 W/kg
Power Drift-Finish: 0.518 W/kg
Power Drift (%) : -1.422
Picture :



1 gram SAR value : 0.498 W/kg
10 gram SAR value : 0.391 W/kg
Area Scan Peak SAR : 0.536 W/kg
Zoom Scan Peak SAR : 0.630 W/kg

■ 2437 MHz, EUT Position: Tablet,SP 836 UMTS

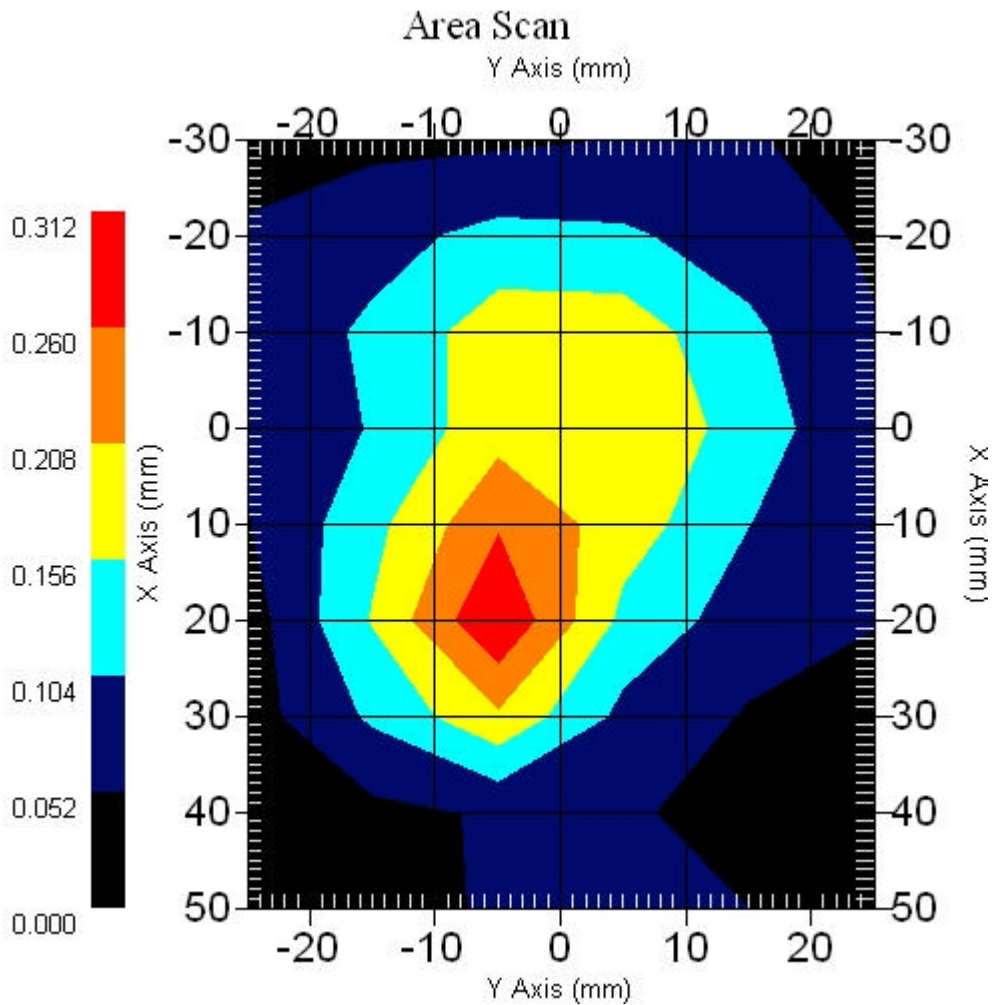
Measurement Data

Crest Factor : 1
Scan Type : Complete
Area Scan : 9x6x1 : Measurement x=10mm, y=10mm, z=4mm
Zoom Scan : 5x5x8 : Measurement x=8mm, y=8mm, z=4mm

Other Data

DUT Position : Touch
Separation : 0
Channel : Mid - 2437MHz

Power Drift-Start : 0.238 W/kg
Power Drift-Finish: 0.225 W/kg
Power Drift (%) : -1.260
Picture :



1 gram SAR value : 0.258 W/kg
10 gram SAR value : 0.143 W/kg
Area Scan Peak SAR : 0.311 W/kg
Zoom Scan Peak SAR : 0.480 W/kg

■ 2437 MHz, EUT Position: Tablet,SP 836 UMTS

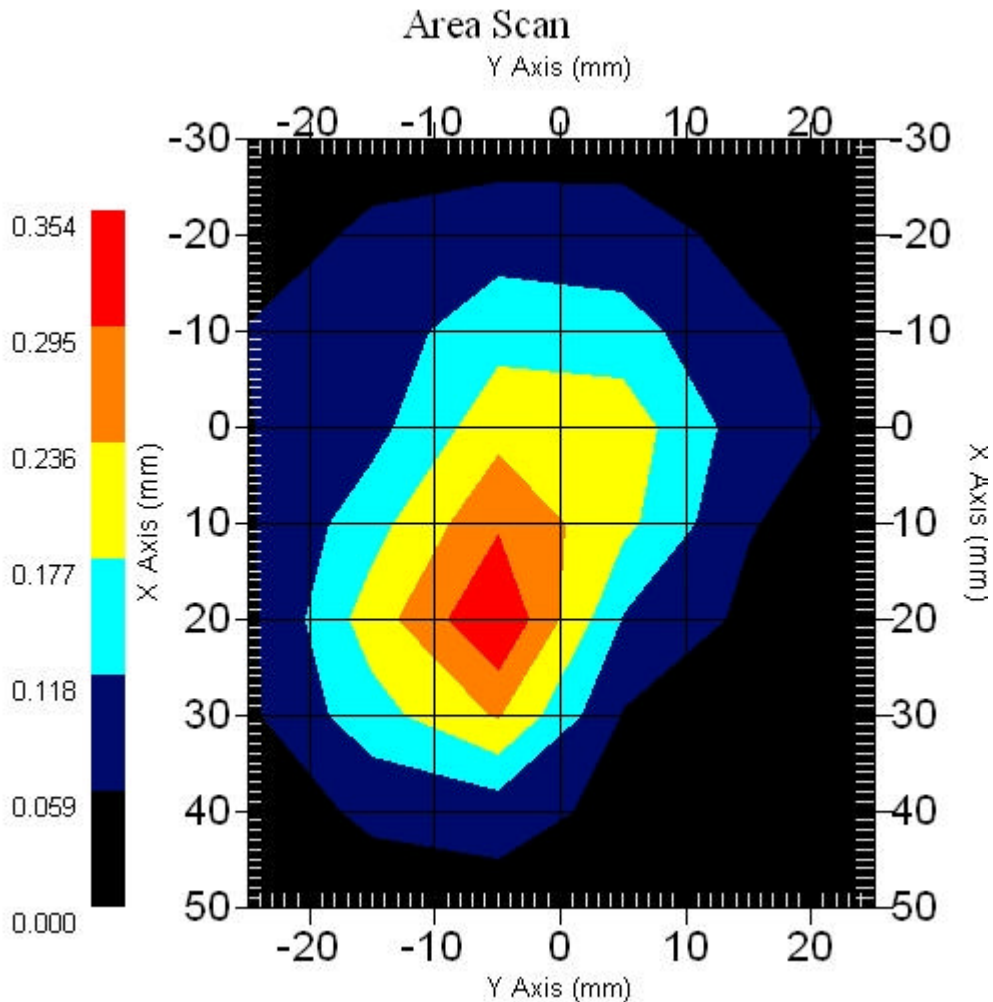
Measurement Data

Crest Factor : 1
Scan Type : Complete
Area Scan : 9x6x1 : Measurement x=10mm, y=10mm, z=4mm
Zoom Scan : 5x5x8 : Measurement x=8mm, y=8mm, z=4mm

Other Data

DUT Position : Touch
Separation : 0
Channel : Mid - 2437MHz

Power Drift-Start : 0.262 W/kg
Power Drift-Finish: 0.249 W/kg
Power Drift (%) : -4.961
Picture :



1 gram SAR value : 0.245 W/kg
10 gram SAR value : 0.131 W/kg
Area Scan Peak SAR : 0.354 W/kg
Zoom Scan Peak SAR : 0.550 W/kg

■ 2437 MHz, EUT Position: Tablet,SP 836 UMTS

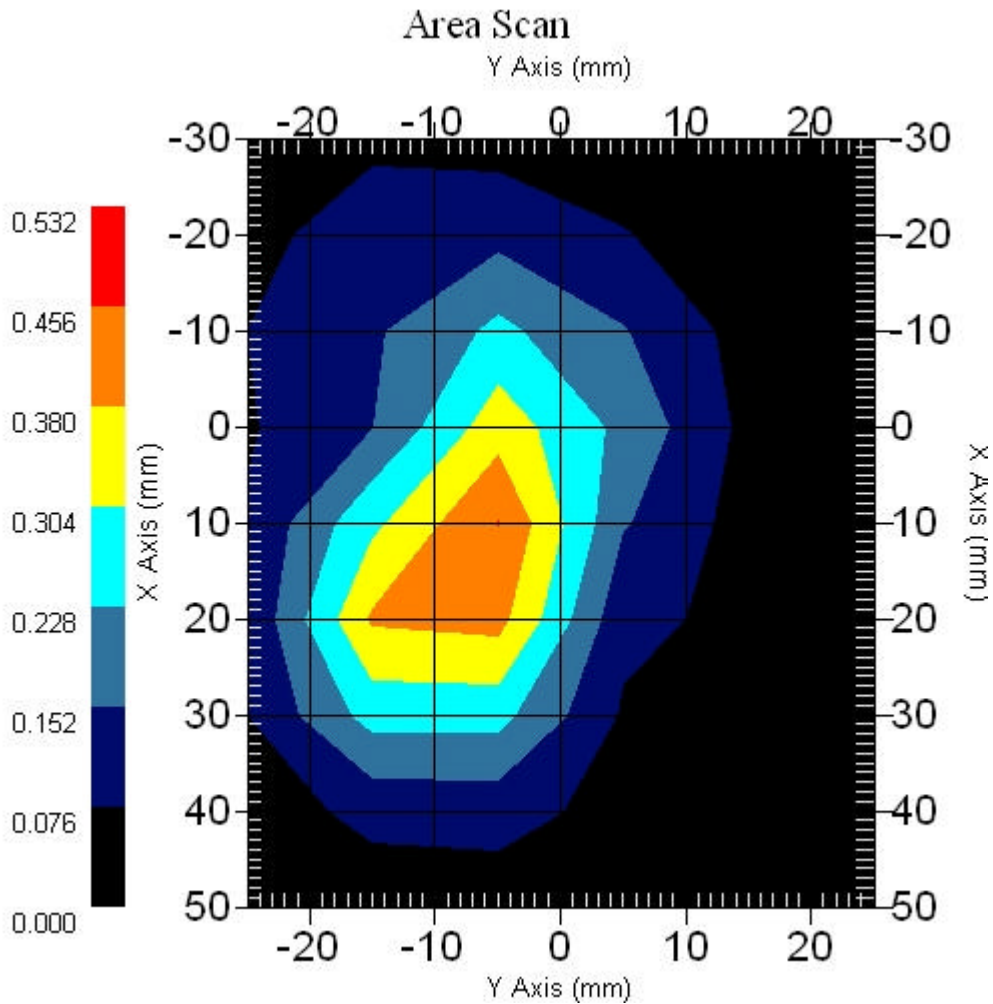
Measurement Data

Crest Factor : 1
Scan Type : Complete
Area Scan : 9x6x1 : Measurement x=10mm, y=10mm, z=4mm
Zoom Scan : 5x5x8 : Measurement x=8mm, y=8mm, z=4mm

Other Data

DUT Position : Touch
Separation : 0
Channel : Mid - 2437MHz

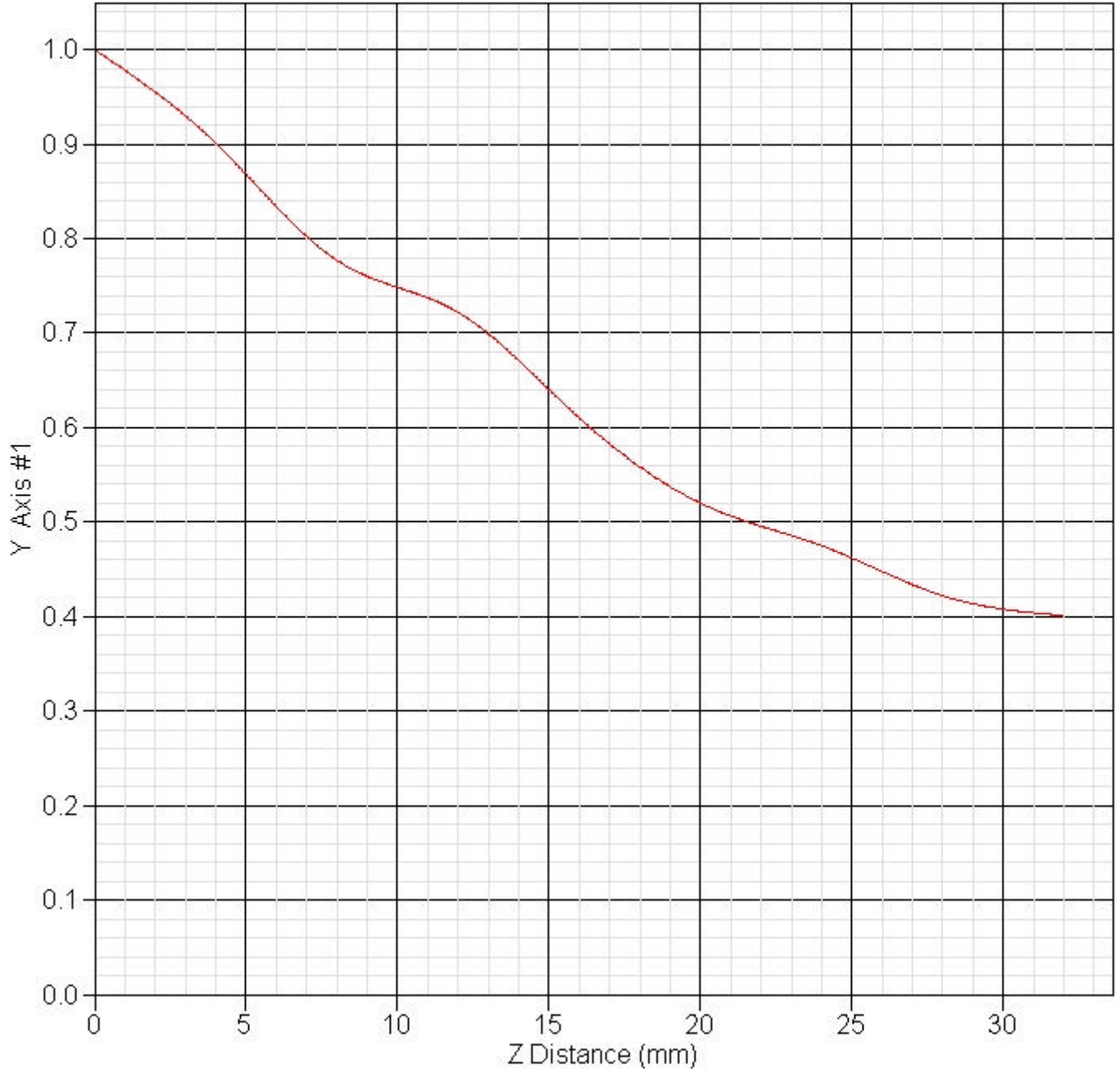
Power Drift-Start : 0.378 W/kg
Power Drift-Finish: 0.379 W/kg
Power Drift (%) : 2.645
Picture :



1 gram SAR value : 0.424 W/kg
10 gram SAR value : 0.222 W/kg
Area Scan Peak SAR : 0.458 W/kg
Zoom Scan Peak SAR : 0.810 W/kg

■ Z Axis : 802.11b 2437MHz, Position: Tablet SP, 836 GSM

SAR-Z Axis
at Hotspot x:30.40 y:14.80



11.3 802.11b + WWAN Tosa (EV-DO) : FCCID N7N-MC5720 + Bluetooth

■ 2437 MHz, EUT Position: Laptop 836 EV-DO

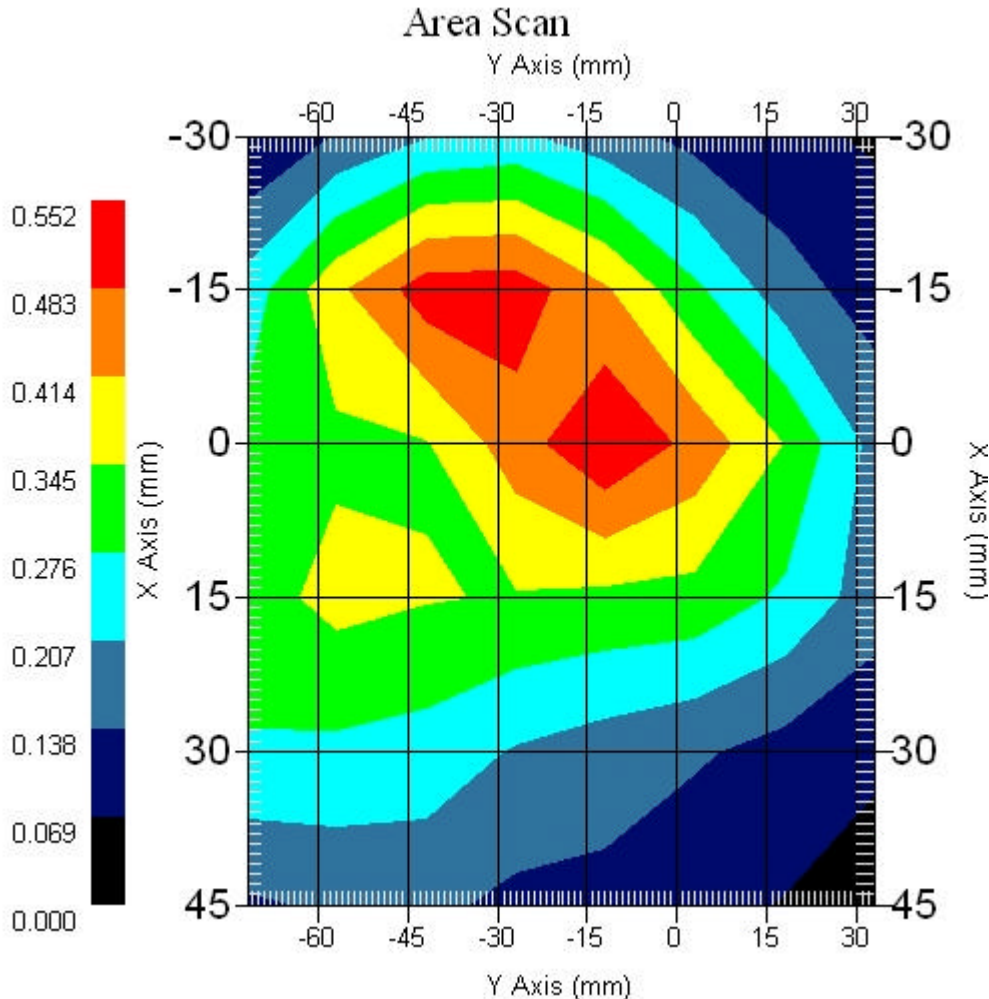
Measurement Data

Crest Factor : 1
Scan Type : Complete
Area Scan : 6x8x1 : Measurement x=15mm, y=15mm, z=4mm
Zoom Scan : 5x5x8 : Measurement x=8mm, y=8mm, z=4mm

Other Data

DUT Position : Touch
Separation : 0
Channel : Mid - 2437MHz

Power Drift-Start : 0.538 W/kg
Power Drift-Finish: 0.540 W/kg
Power Drift (%) : 0.372
Picture :



1 gram SAR value : 0.540 W/kg
10 gram SAR value : 0.385 W/kg
Area Scan Peak SAR : 0.549 W/kg
Zoom Scan Peak SAR : 0.740 W/kg

■ 2437 MHz, EUT Position: Laptop 836 EV-DO

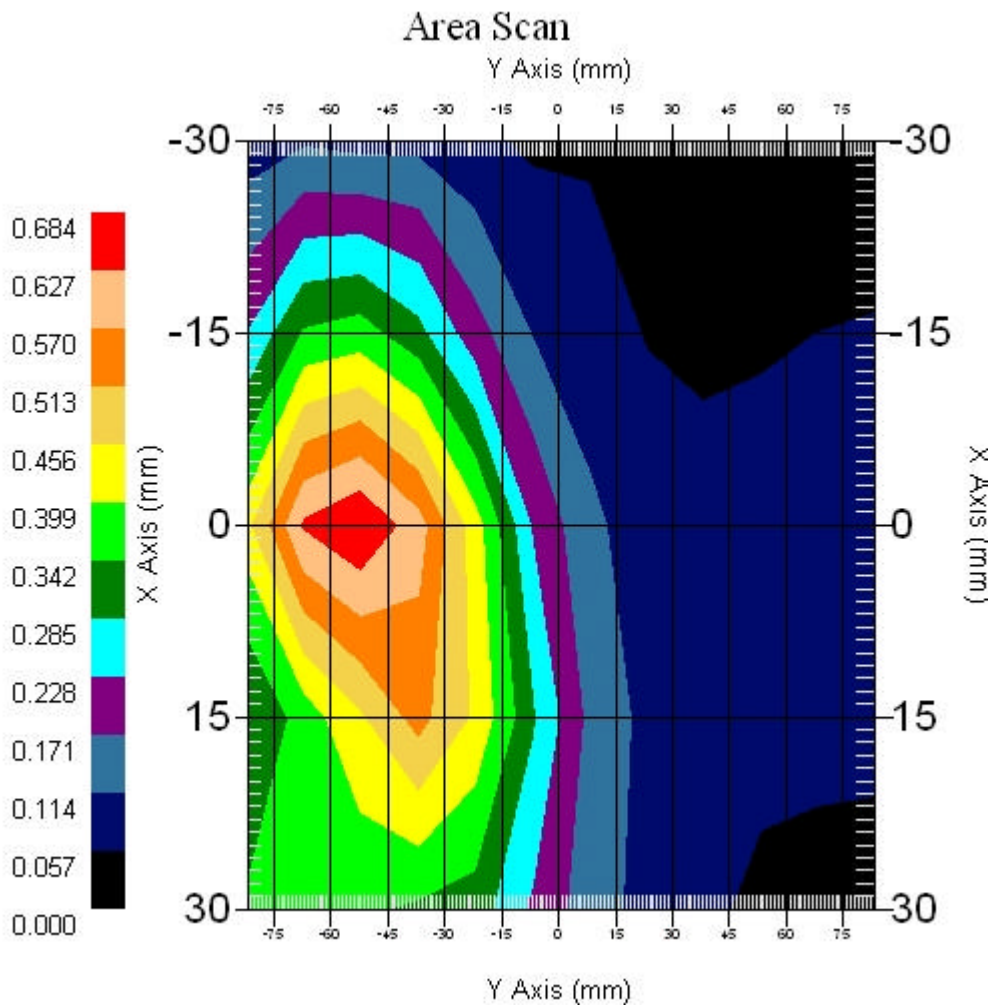
Measurement Data

Crest Factor : 1
Scan Type : Complete
Area Scan : 5x12x1 : Measurement x=15mm, y=15mm, z=4mm
Zoom Scan : 5x5x8 : Measurement x=8mm, y=8mm, z=4mm

Other Data

DUT Position : Touch
Separation : 0
Channel : Mid - 2437MHz

Power Drift-Start : 0.171 W/kg
Power Drift-Finish: 0.167 W/kg
Power Drift (%) : -2.339



1 gram SAR value : 0.548 W/kg
10 gram SAR value : 0.372 W/kg
Area Scan Peak SAR : 0.681 W/kg
Zoom Scan Peak SAR : 0.960 W/kg

■ 2437 MHz, EUT Position: Tablet,PL 836 EV-DO

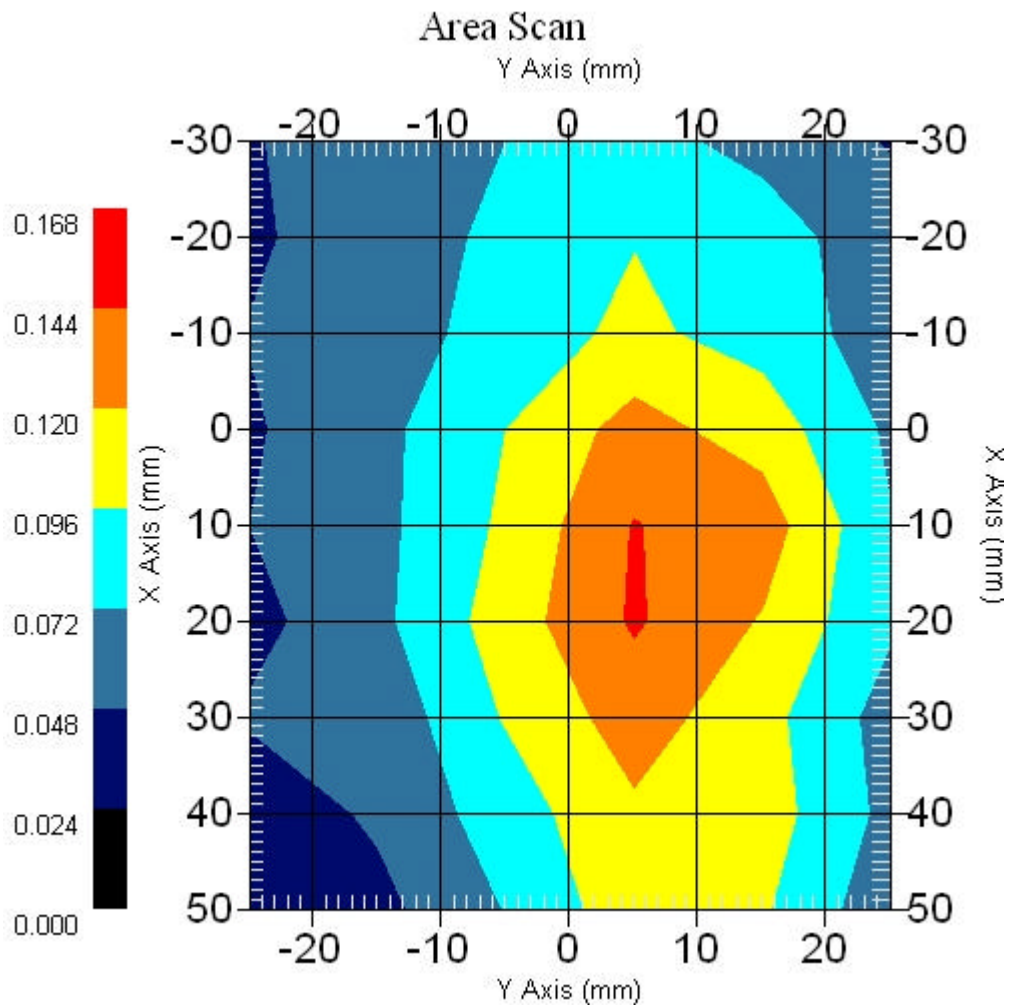
Measurement Data

Crest Factor : 1
Scan Type : Complete
Area Scan : 9x6x1 : Measurement x=10mm, y=10mm, z=4mm
Zoom Scan : 5x5x8 : Measurement x=8mm, y=8mm, z=4mm

Other Data

DUT Position : Touch
Separation : 0
Channel : Mid - 2437MHz

Power Drift-Start : 0.135 W/kg
Power Drift-Finish: 0.137 W/kg
Power Drift (%) : 1.481



1 gram SAR value : 0.145 W/kg
10 gram SAR value : 0.108 W/kg
Area Scan Peak SAR : 0.147 W/kg
Zoom Scan Peak SAR : 0.170 W/kg

■ 2437 MHz, EUT Position: Tablet,PP 836 EV-DO

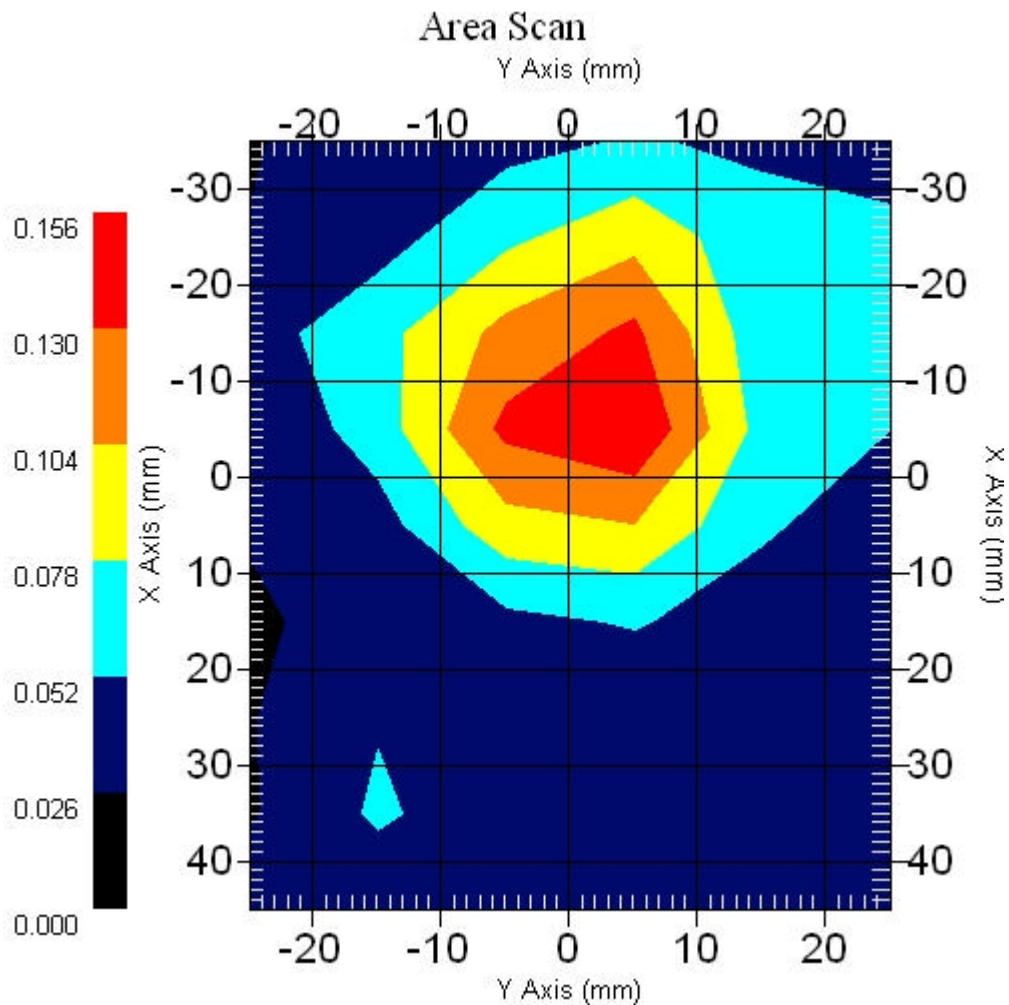
Measurement Data

Crest Factor : 1
Scan Type : Complete
Area Scan : 9x6x1 : Measurement x=10mm, y=10mm, z=4mm
Zoom Scan : 5x5x8 : Measurement x=8mm, y=8mm, z=4mm

Other Data

DUT Position : Touch
Separation : 0
Channel : Mid - 2437MHz

Power Drift-Start : 0.160 W/kg
Power Drift-Finish: 0.167 W/kg
Power Drift (%) : 4.735



1 gram SAR value : 0.149 W/kg
10 gram SAR value : 0.081 W/kg
Area Scan Peak SAR : 0.155 W/kg
Zoom Scan Peak SAR : 0.280 W/kg

■ 2437 MHz, EUT Position: Tablet,SL 836 EV-DO

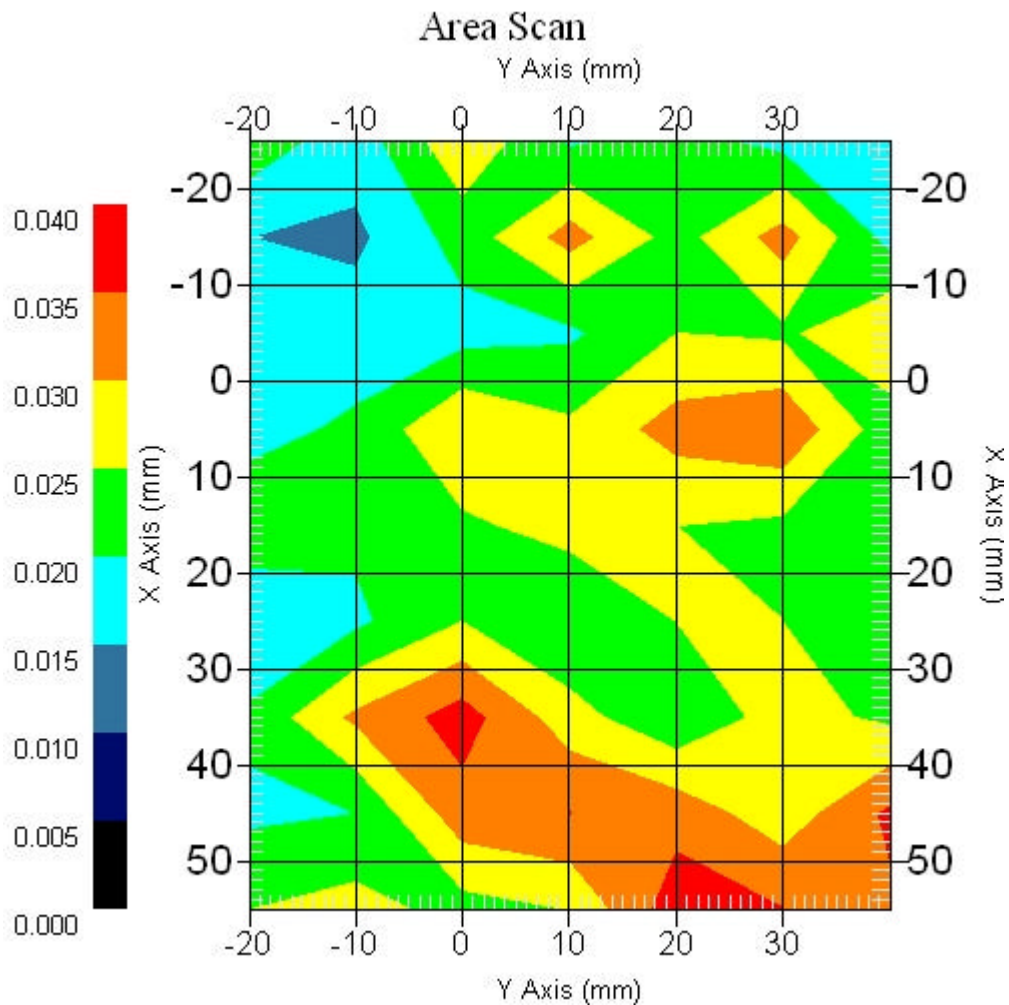
Measurement Data

Crest Factor : 1
 Scan Type : Complete
 Area Scan : 9x5x1 : Measurement x=10mm, y=10mm, z=4mm
 Zoom Scan : 5x5x8 : Measurement x=8mm, y=8mm, z=4mm

Other Data

DUT Position : Touch
 Separation : 0
 Channel : Mid - 2437MHz

Power Drift-Start : 0.027 W/kg
 Power Drift-Finish: 0.028 W/kg
 Power Drift (%) : 3.703



1 gram SAR value : 0.075 W/kg
 10 gram SAR value : 0.057 W/kg
 Area Scan Peak SAR : 0.052 W/kg
 Zoom Scan Peak SAR : 0.080 W/kg

■ 2437 MHz, EUT Position: Tablet,SP 836 EV-DO

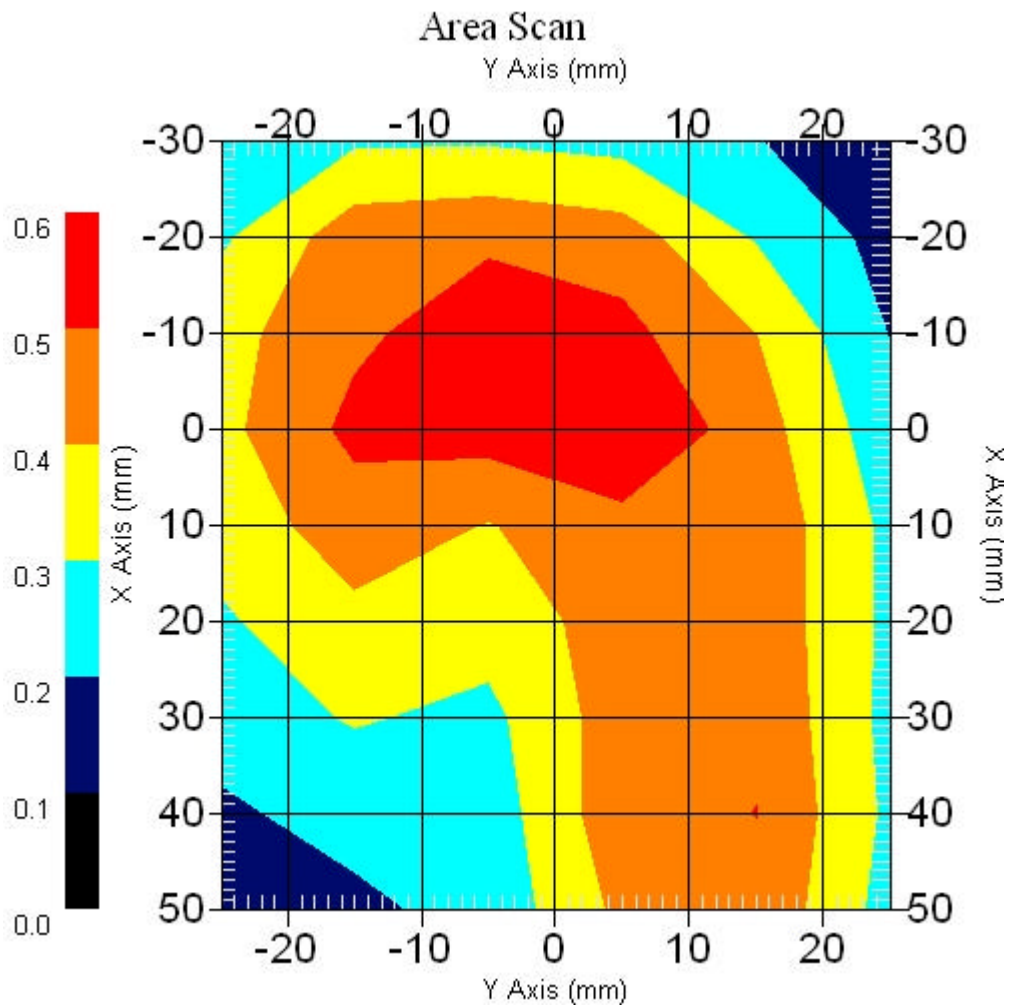
Measurement Data

Crest Factor : 1
Scan Type : Complete
Area Scan : 9x6x1 : Measurement x=10mm, y=10mm, z=4mm
Zoom Scan : 5x5x8 : Measurement x=8mm, y=8mm, z=4mm

Other Data

DUT Position : Touch
Separation : 0
Channel : Mid - 2437MHz

Power Drift-Start : 0.555 W/kg
Power Drift-Finish: 0.552 W/kg
Power Drift (%) : -0.577



1 gram SAR value : 0.571 W/kg
10 gram SAR value : 0.394 W/kg
Area Scan Peak SAR : 0.597 W/kg
Zoom Scan Peak SAR : 0.910 W/kg

■ 2437 MHz, EUT Position: Tablet, PL 1880 EV-DO

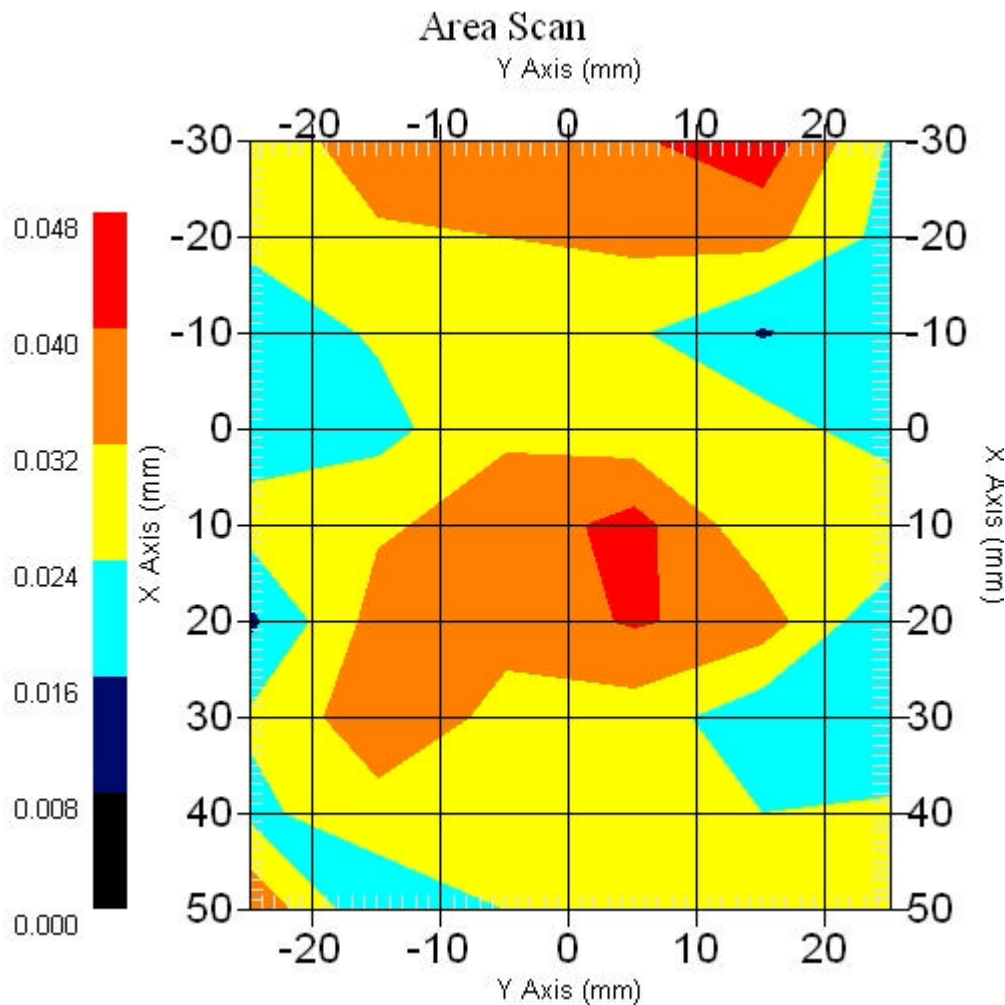
Measurement Data

Crest Factor : 1
Scan Type : Complete
Area Scan : 9x6x1 : Measurement x=10mm, y=10mm, z=4mm
Zoom Scan : 5x5x8 : Measurement x=8mm, y=8mm, z=4mm

Other Data

DUT Position : Touch
Separation : 0
Channel : Mid - 2437MHz

Power Drift-Start : 0.030 W/kg
Power Drift-Finish: 0.029 W/kg
Power Drift (%) : -3.333



1 gram SAR value : 0.044 W/kg
10 gram SAR value : 0.032 W/kg
Area Scan Peak SAR : 0.045 W/kg
Zoom Scan Peak SAR : 0.083 W/kg

■ 2437 MHz, EUT Position: Tablet,PP 1880 EV-DO

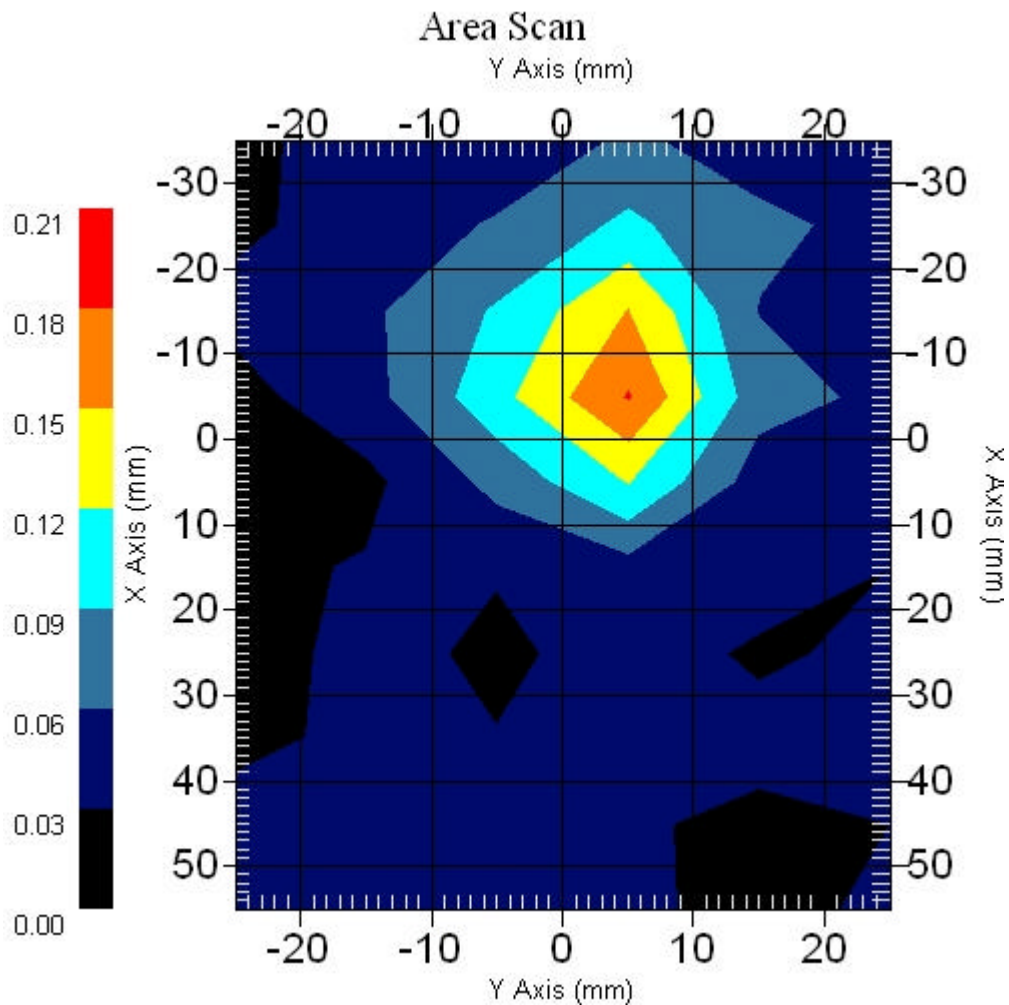
Measurement Data

Crest Factor : 1
Scan Type : Complete
Area Scan : 10x6x1 : Measurement x=10mm, y=10mm, z=4mm
Zoom Scan : 5x5x8 : Measurement x=8mm, y=8mm, z=4mm

Other Data

DUT Position : Touch
Separation : 0
Channel : Mid - 2437MHz

Power Drift-Start : 0.166 W/kg
Power Drift-Finish: 0.167 W/kg
Power Drift (%) : 0.847



1 gram SAR value : 0.155 W/kg
10 gram SAR value : 0.081 W/kg
Area Scan Peak SAR : 0.182 W/kg
Zoom Scan Peak SAR : 0.300 W/kg

■ 2437 MHz, EUT Position: Tablet,SL 1880 EV-DO

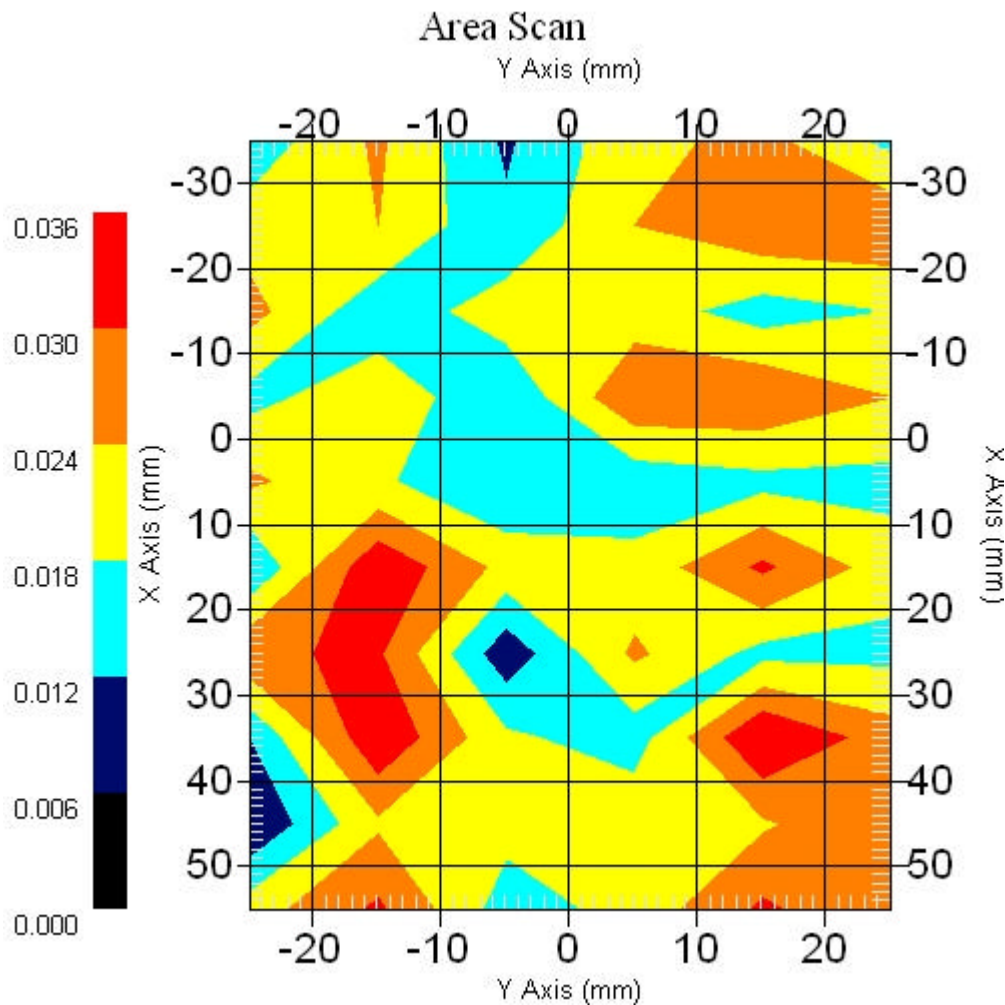
Measurement Data

Crest Factor : 1
Scan Type : Complete
Area Scan : 10x6x1 : Measurement x=10mm, y=10mm, z=4mm
Zoom Scan : 5x5x8 : Measurement x=8mm, y=8mm, z=4mm

Other Data

DUT Position : Touch
Separation : 0
Channel : Mid - 2437MHz

Power Drift-Start : 0.026 W/kg
Power Drift-Finish: 0.027 W/kg
Power Drift (%) : 4.106



1 gram SAR value : 0.039 W/kg
10 gram SAR value : 0.020 W/kg
Area Scan Peak SAR : 0.036 W/kg
Zoom Scan Peak SAR : 0.110 W/kg

■ 2437 MHz, EUT Position: Tablet,SP 1880 EV-DO

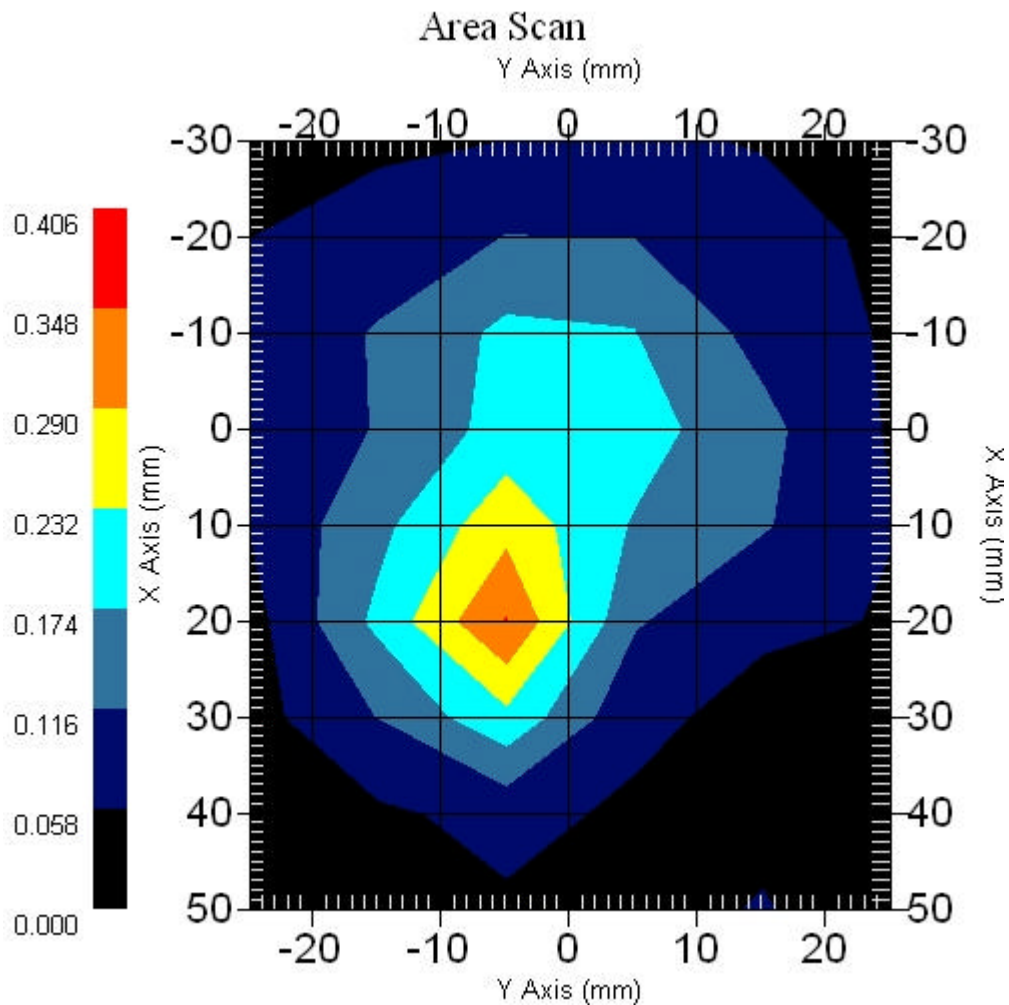
Measurement Data

Crest Factor : 1
Scan Type : Complete
Area Scan : 9x6x1 : Measurement x=10mm, y=10mm, z=4mm
Zoom Scan : 5x5x8 : Measurement x=8mm, y=8mm, z=4mm

Other Data

DUT Position : Touch
Separation : 0
Channel : Mid - 2437MHz

Power Drift-Start : 0.225 W/kg
Power Drift-Finish: 0.219 W/kg
Power Drift (%) : -2.663

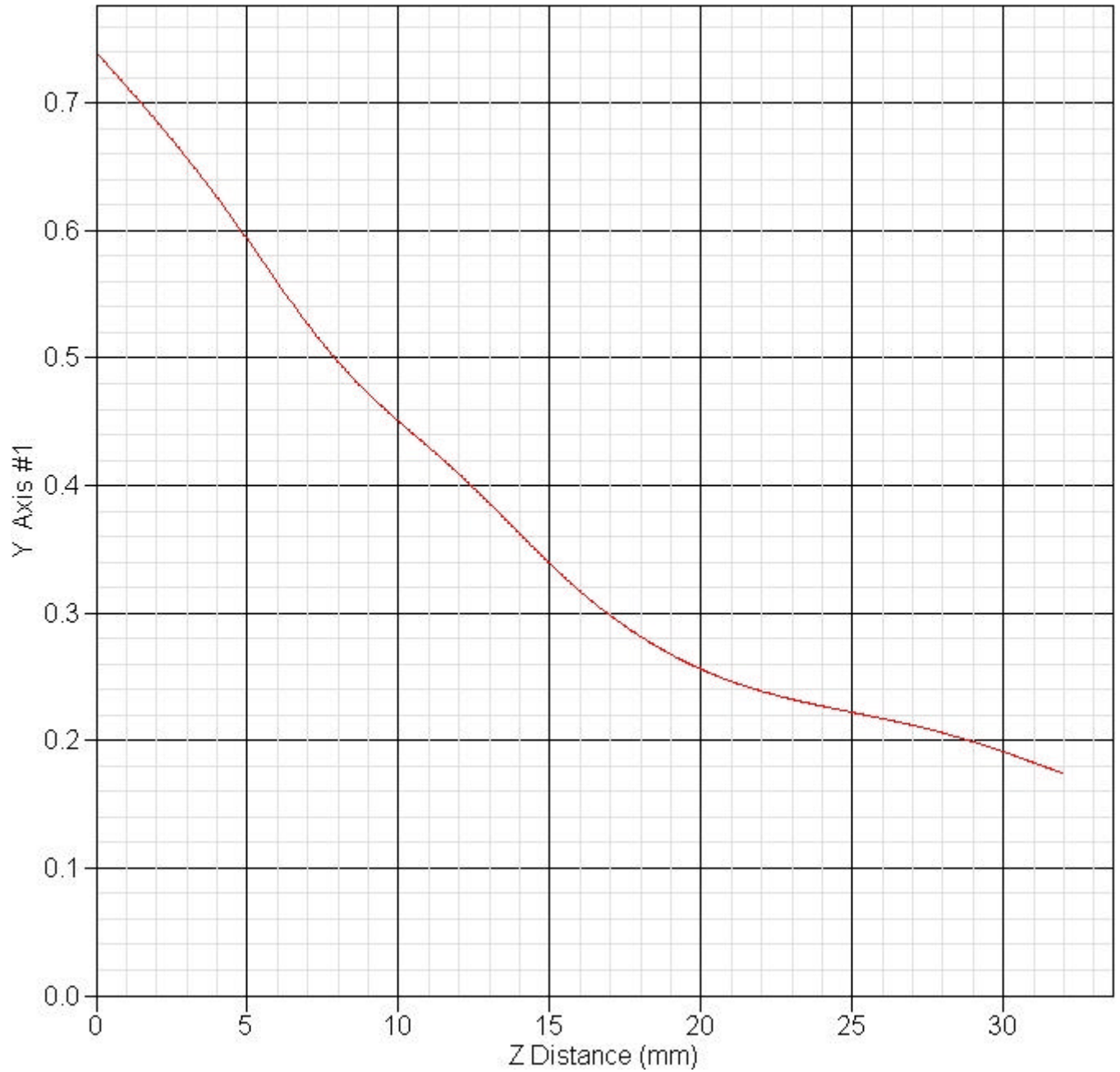


1 gram SAR value : 0.223 W/kg
10 gram SAR value : 0.119 W/kg
Area Scan Peak SAR : 0.350 W/kg
Zoom Scan Peak SAR : 0.470 W/kg

■ Z Axis : 802.11b 2437MHz, Position: Laptop, TOSA 836 EV-DO

SAR-Z Axis

at Hotspot x:-7.70 y:-20.00



12. 802.11g SAR measurement Data

Measurement Date : 01-Aug-2006

Product Data

Device Name : Golan
Serial No. : 11.b-Botton-GSM800
Type : Other
Model : 1
Frequency : 2437.00 MHz
Max. Transmit Pwr : 0.103 W
Drift Time : 0 min(s)
Length : 230 mm
Width : 270 mm
Depth : 22 mm
Antenna Type : Internal
Orientation : Touch

Phantom Data

Name : APREL-Uni
Type : Uni-Phantom
Size (mm) : 280 x 280 x 200
Serial No. : System Default
Location : Center
Description : uni_1

Tissue Data

Type : BODY
Serial No. : 2450BODY
Frequency : 2450.00 MHz
Last Calib. Date : 01-Aug-2006
Temperature : 22.10 °C
Ambient Temp. : 22.40 °C
Humidity : 51.00 RH%
Epsilon : 53.95 F/m
Sigma : 1.99 S/m
Density : 1000.00 kg/cu. m

Probe Data

Name : E-field Probe
Model : ALS-E-020
Type : E-Field Triangle
Serial No. : 266
Last Calib. Date : 22-Jun-2006
Frequency : 2450.00 MHz
Duty Cycle Factor: 1
Conversion Factor: 5.02
Probe Sensitivity: 1.20 1.20 1.20 $\mu\text{V}/(\text{V}/\text{m})^2$
Compression Point: 95.00 mV
Offset : 1.56 mm

12.1 802.11g + Karafuto (GSM, EGSM, UMTS) : FCCID N7NMC8765 +Bluetooth

■ 2437 MHz, EUT Position: Laptop 836GSM

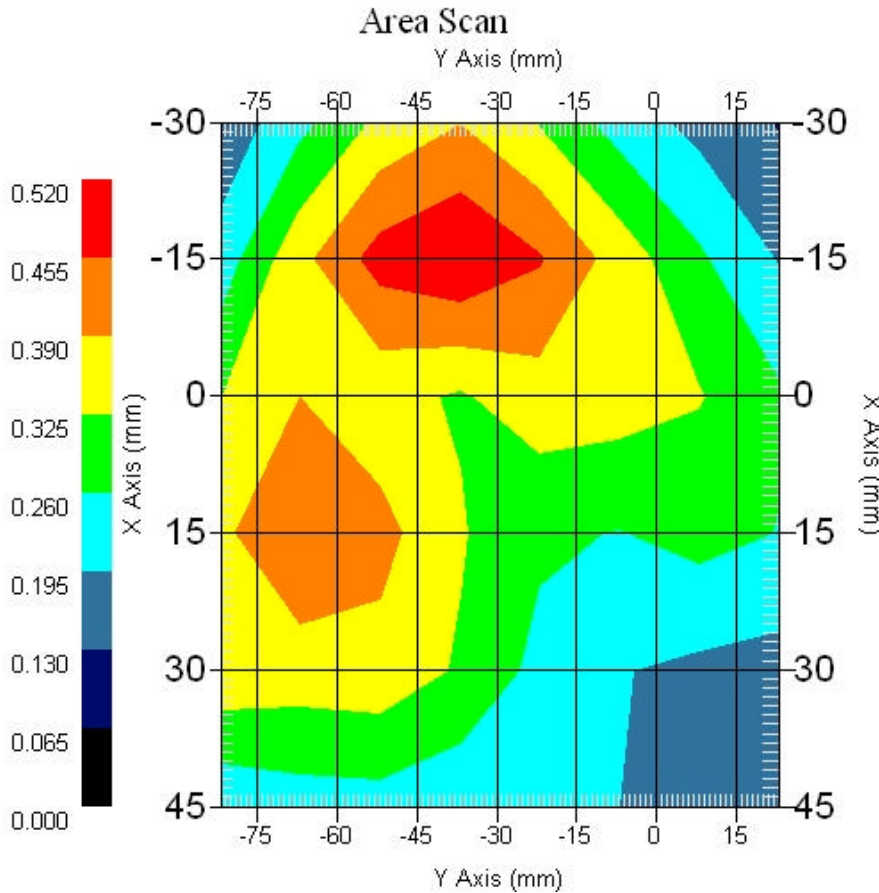
Measurement Data

Crest Factor : 1
 Scan Type : Complete
 Area Scan : 6x8x1 : Measurement x=15mm, y=15mm, z=4mm
 Zoom Scan : 5x5x8 : Measurement x=8mm, y=8mm, z=4mm

Other Data

DUT Position : Touch
 Separation : 0
 Channel : Mid - 2437MHz

Power Drift-Start : 0.436 W/kg
 Power Drift-Finish: 0.436 W/kg
 Power Drift (%) : 0.021
 Picture :



1 gram SAR value : 0.518 W/kg
 10 gram SAR value : 0.398 W/kg
 Area Scan Peak SAR : 0.518 W/kg
 Zoom Scan Peak SAR : 0.650 W/kg

■ 2437 MHz, EUT Position: Laptop 836GSM

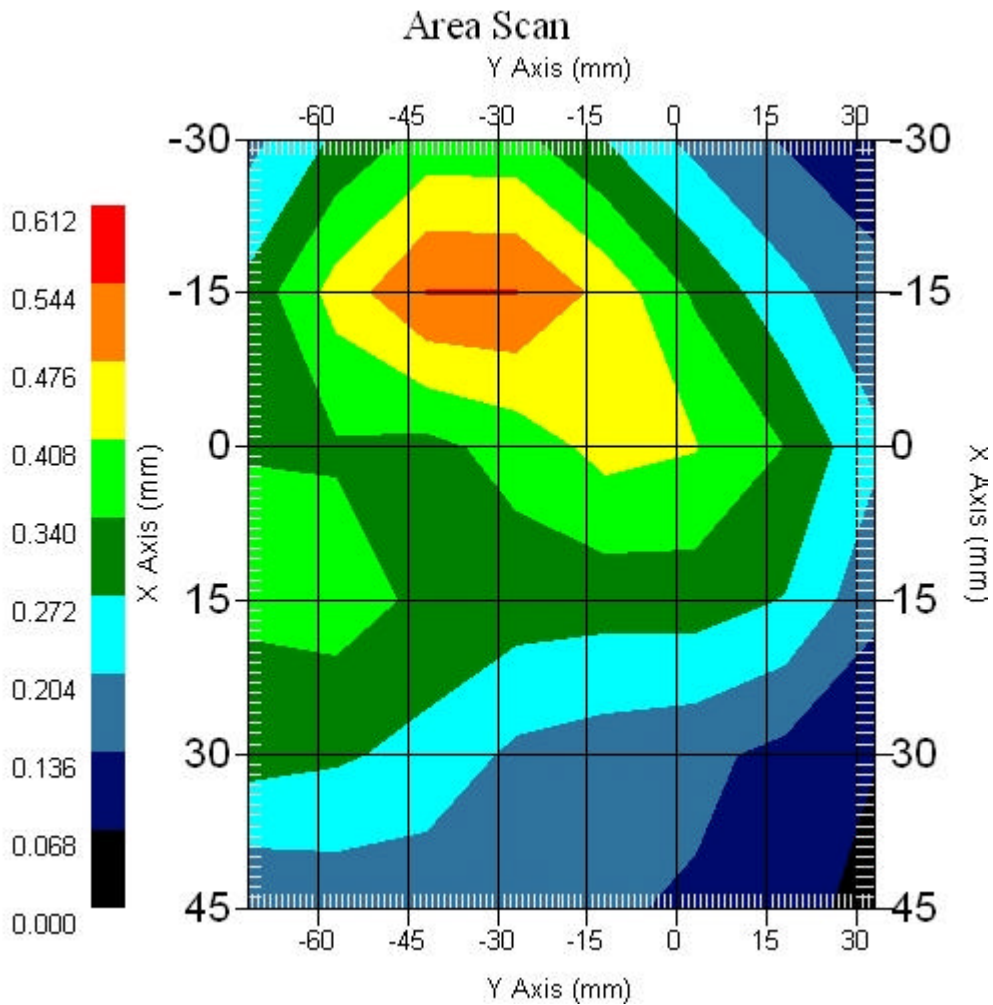
Measurement Data

Crest Factor : 1
Scan Type : Complete
Area Scan : 6x8x1 : Measurement x=15mm, y=15mm, z=4mm
Zoom Scan : 5x5x8 : Measurement x=8mm, y=8mm, z=4mm

Other Data

DUT Position : Touch
Separation : 0
Channel : Mid - 2437MHz

Power Drift-Start : 0.436 W/kg
Power Drift-Finish: 0.430 W/kg
Power Drift (%) : -1.469
Picture :



1 gram SAR value : 0.517 W/kg
10 gram SAR value : 0.380 W/kg
Area Scan Peak SAR : 0.547 W/kg
Zoom Scan Peak SAR : 0.700 W/kg

■ 2437 MHz, EUT Position: Tablet,PL 836GSM

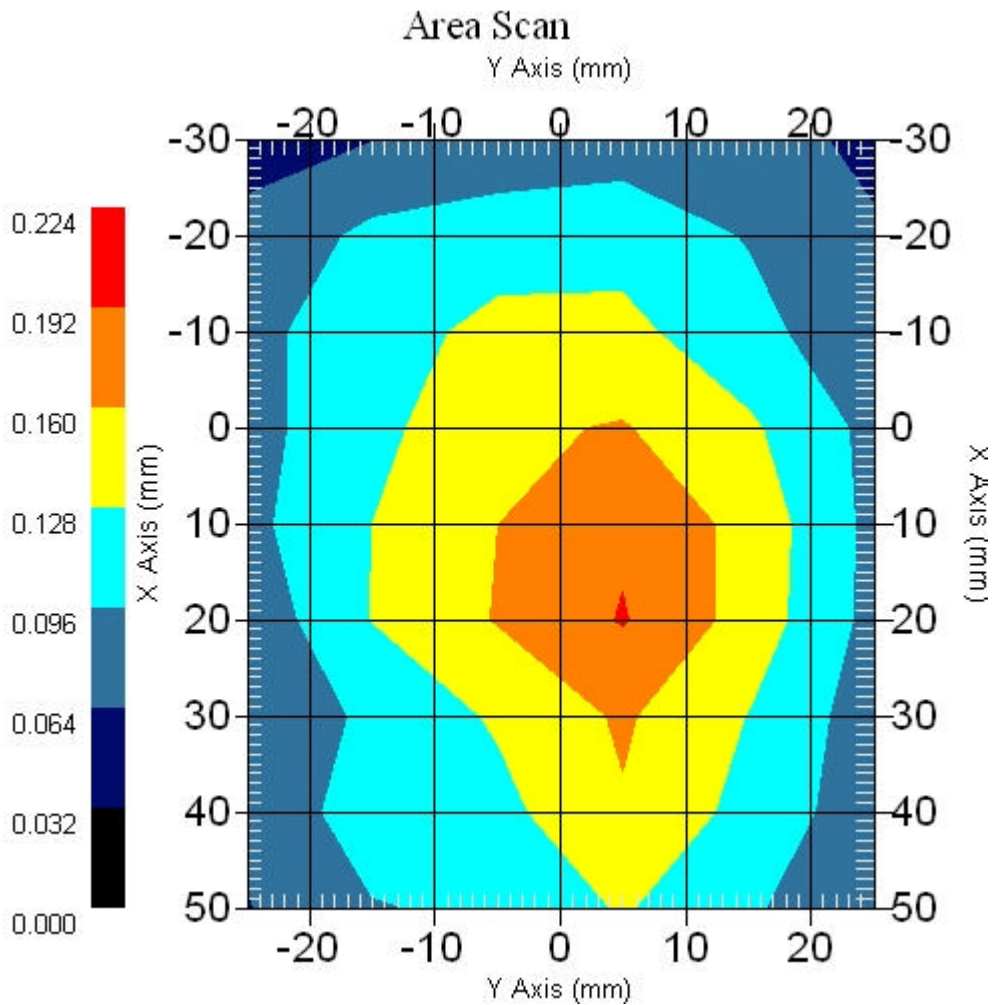
Measurement Data

Crest Factor : 1
Scan Type : Complete
Area Scan : 9x6x1 : Measurement x=10mm, y=10mm, z=4mm
Zoom Scan : 5x5x8 : Measurement x=8mm, y=8mm, z=4mm

Other Data

DUT Position : Touch
Separation : 0
Channel : Mid - 2437MHz

Power Drift-Start : 0.183 W/kg
Power Drift-Finish: 0.174 W/kg
Power Drift (%) : -4.918
Picture :



1 gram SAR value : 0.176 W/kg
10 gram SAR value : 0.134 W/kg
Area Scan Peak SAR : 0.194 W/kg
Zoom Scan Peak SAR : 0.200 W/kg