

11.4.2 5800MHz, EUT Position: Tablet,PP Aux.

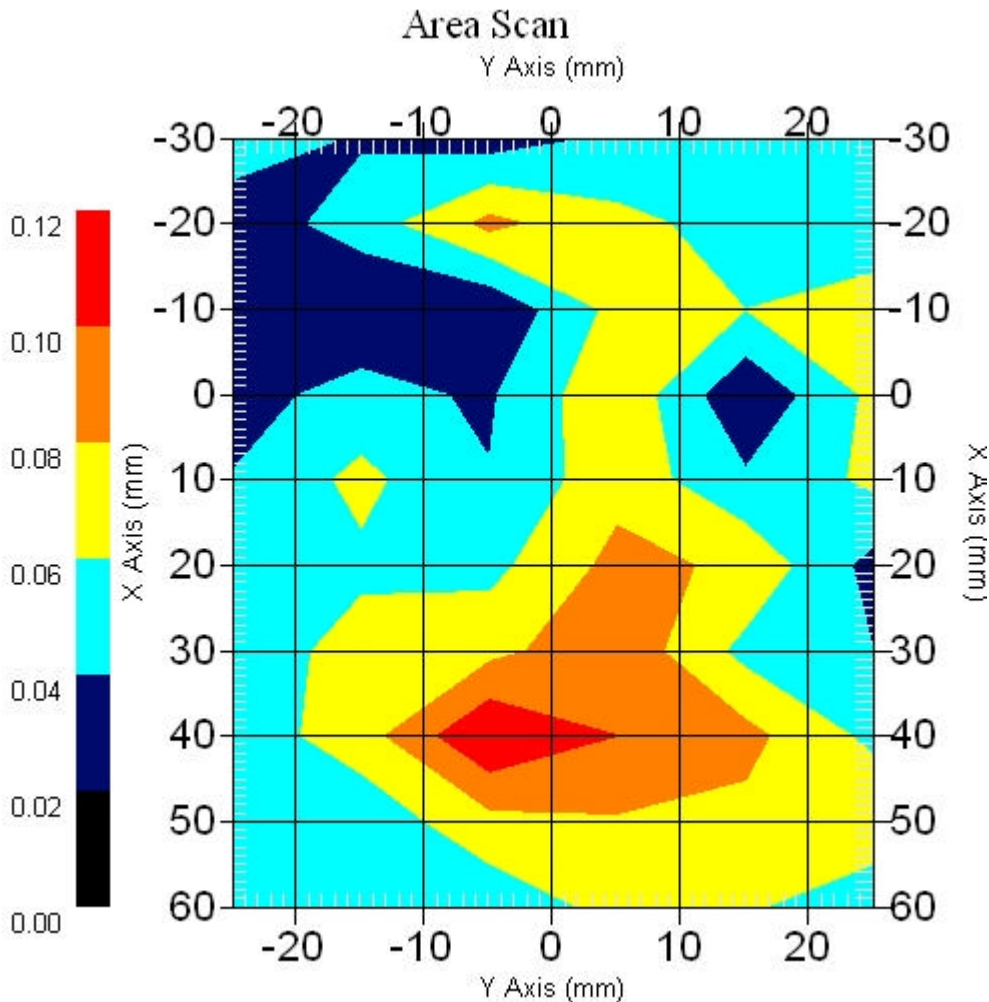
Measurement Data

Crest Factor : 1
Scan Type : Complete
Area Scan : 10x6x1 : Measurement x=10mm, y=10mm, z=4mm
Zoom Scan : 9x9x13 : Measurement x=4mm, y=4mm, z=2.5mm

Other Data

DUT Position : Touch
Separation : 0
Channel : Mid - 5785MHz

Power Drift-Start : 0.090 W/kg
Power Drift-Finish: 0.092 W/kg
Power Drift (%) : 2.222



1 gram SAR value : 0.122 W/kg
10 gram SAR value : 0.081 W/kg
Area Scan Peak SAR : 0.119 W/kg
Zoom Scan Peak SAR : 0.231 W/kg

11.4.3 5800MHz, EUT Position: Tablet,SL Main

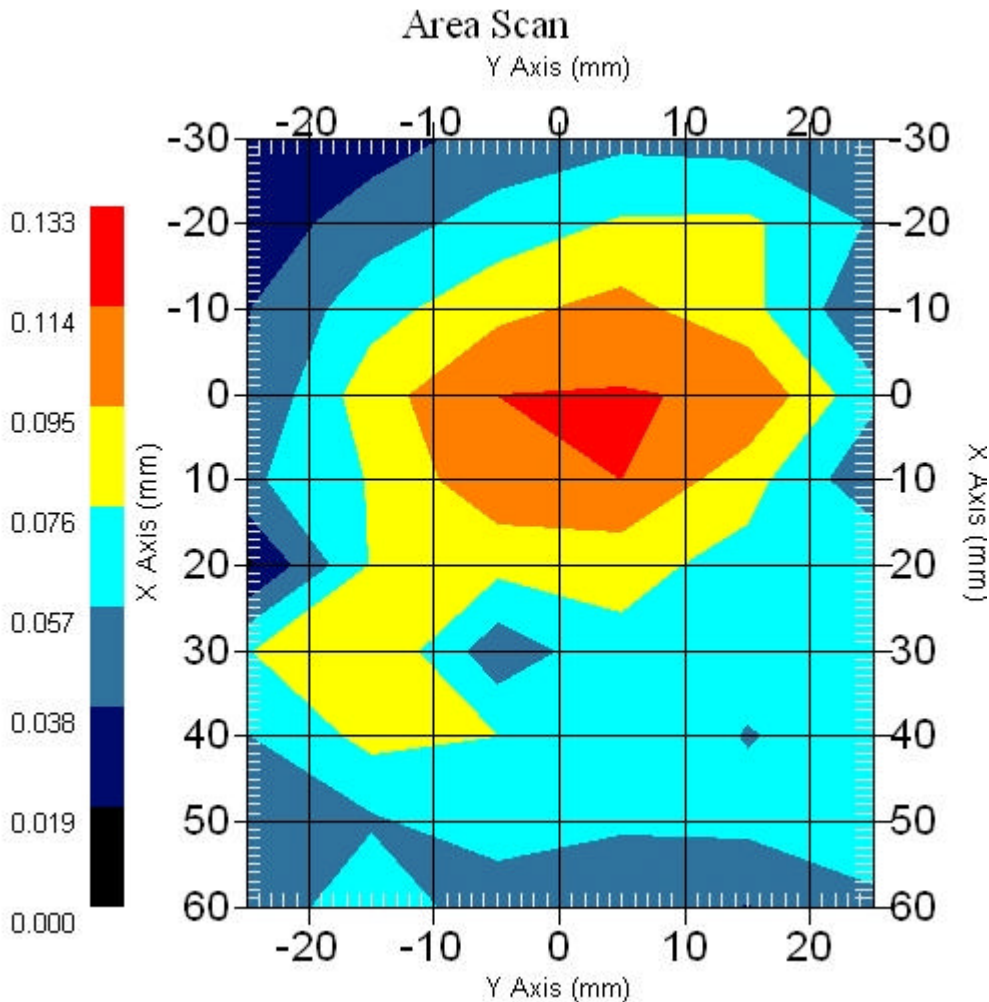
Measurement Data

Crest Factor : 1
Scan Type : Complete
Area Scan : 10x6x1 : Measurement x=10mm, y=10mm, z=4mm
Zoom Scan : 9x9x13 : Measurement x=4mm, y=4mm, z=2.5mm

Other Data

DUT Position : Touch
Separation : 0
Channel : Mid - 5785MHz

Power Drift-Start : 0.072 W/kg
Power Drift-Finish: 0.070 W/kg
Power Drift (%) : -2.777



1 gram SAR value : 0.068 W/kg
10 gram SAR value : 0.060 W/kg
Area Scan Peak SAR : 0.115 W/kg
Zoom Scan Peak SAR : 0.170 W/kg

11.4.4 5800MHz, EUT Position: Tablet,SP Aux.

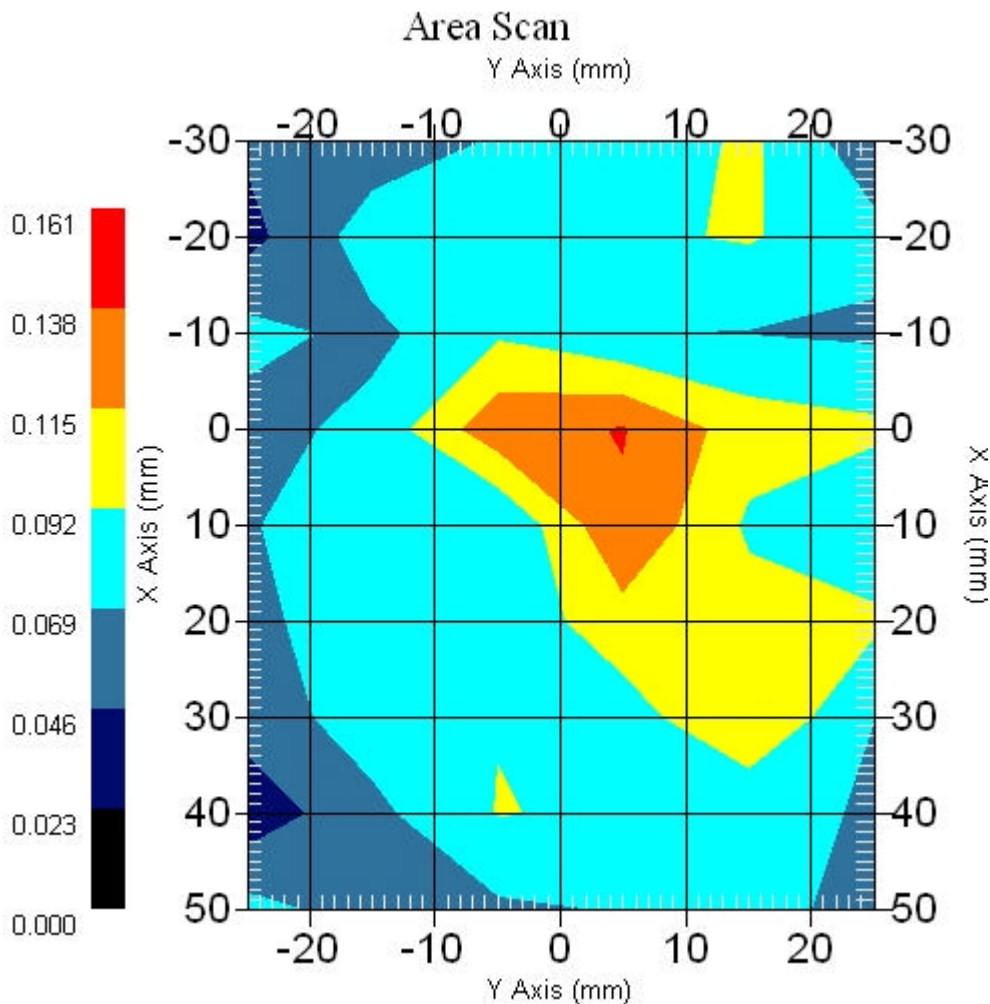
Measurement Data

Crest Factor : 1
Scan Type : Complete
Area Scan : 9x6x1 : Measurement x=10mm, y=10mm, z=4mm
Zoom Scan : 9x9x13 : Measurement x=4mm, y=4mm, z=2.5mm

Other Data

DUT Position : Touch
Separation : 0
Channel : Mid - 5785MHz

Power Drift-Start : 0.093 W/kg
Power Drift-Finish: 0.089 W/kg
Power Drift (%) : -4.301



1 gram SAR value : 0.120 W/kg
10 gram SAR value : 0.097 W/kg
Area Scan Peak SAR : 0.139 W/kg
Zoom Scan Peak SAR : 0.289 W/kg

11.4.5 5800MHz, EUT Position: Laptop Main

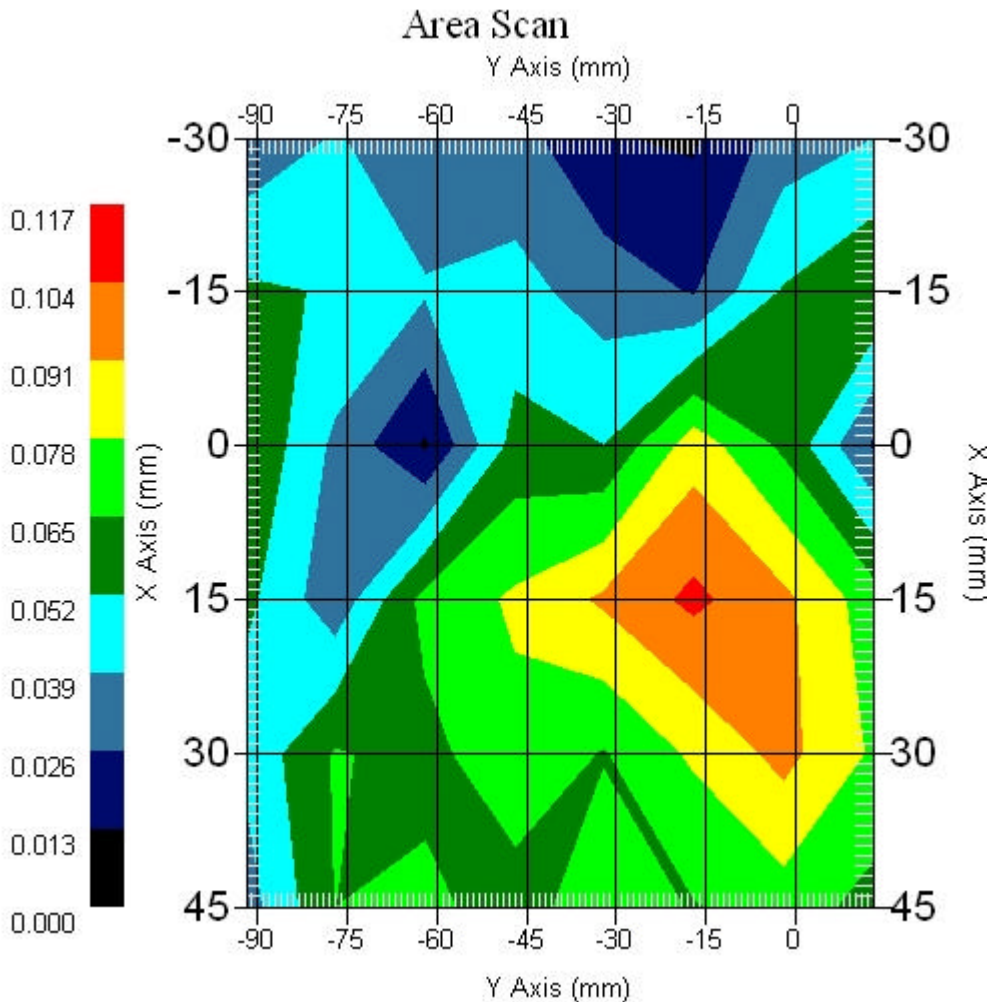
Measurement Data

Crest Factor : 1
Scan Type : Complete
Area Scan : 6x8x1 : Measurement x=15mm, y=15mm, z=4mm
Zoom Scan : 9x9x13 : Measurement x=4mm, y=4mm, z=2.5mm

Other Data

DUT Position : Touch
Separation : 0
Channel : Mid - 5785MHz

Power Drift-Start : 0.083 W/kg
Power Drift-Finish: 0.080 W/kg
Power Drift (%) : -3.614



1 gram SAR value : 0.103 W/kg
10 gram SAR value : 0.078 W/kg
Area Scan Peak SAR : 0.107 W/kg
Zoom Scan Peak SAR : 0.170 W/kg

11.4.6 5800MHz, EUT Position: Laptop Aux.

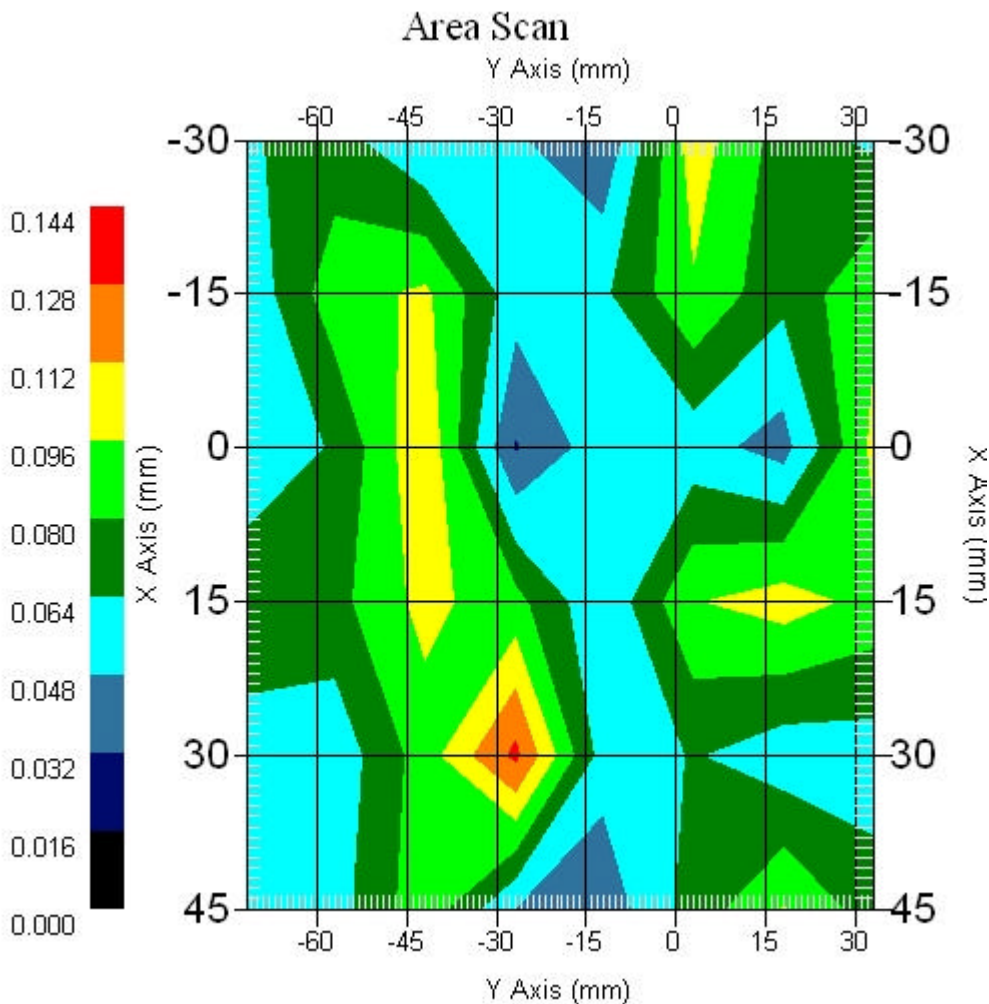
Measurement Data

Crest Factor : 1
Scan Type : Complete
Area Scan : 6x8x1 : Measurement x=15mm, y=15mm, z=4mm
Zoom Scan : 9x9x13 : Measurement x=4mm, y=4mm, z=2.5mm

Other Data

DUT Position : Touch
Separation : 0
Channel : Mid - 5785MHz

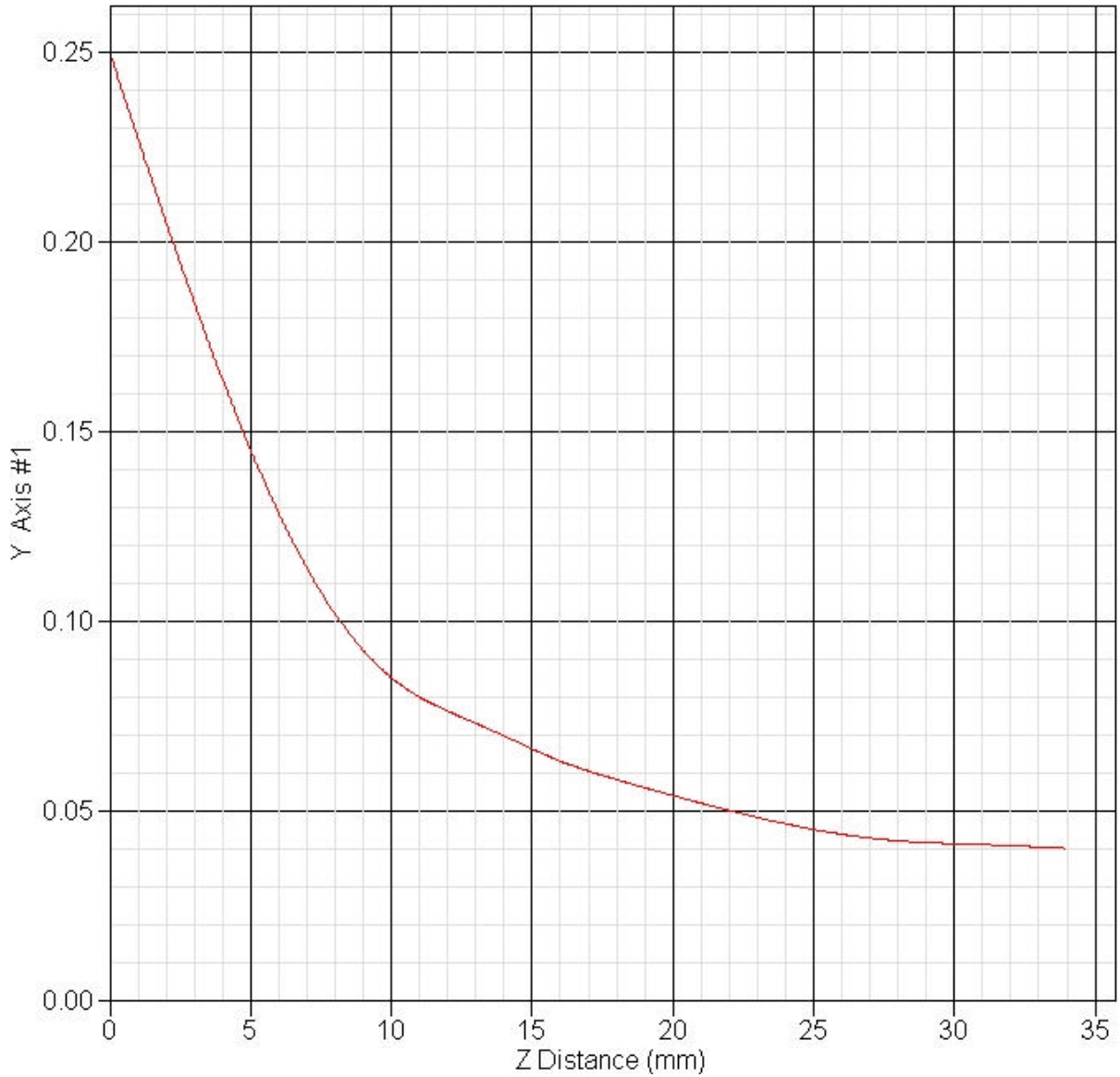
Power Drift-Start : 0.056 W/kg
Power Drift-Finish: 0.057 W/kg
Power Drift (%) : 1.785



1 gram SAR value : 0.099 W/kg
10 gram SAR value : 0.078 W/kg
Area Scan Peak SAR : 0.132 W/kg
Zoom Scan Peak SAR : 0.223 W/kg

11.4.7 Frequency: 802.11a 5785MHz, EUT Tablet,SP Aux. Antenna

SAR-Z Axis
at Hotspot x:32.30 y:22.80



12. Setup Photographs

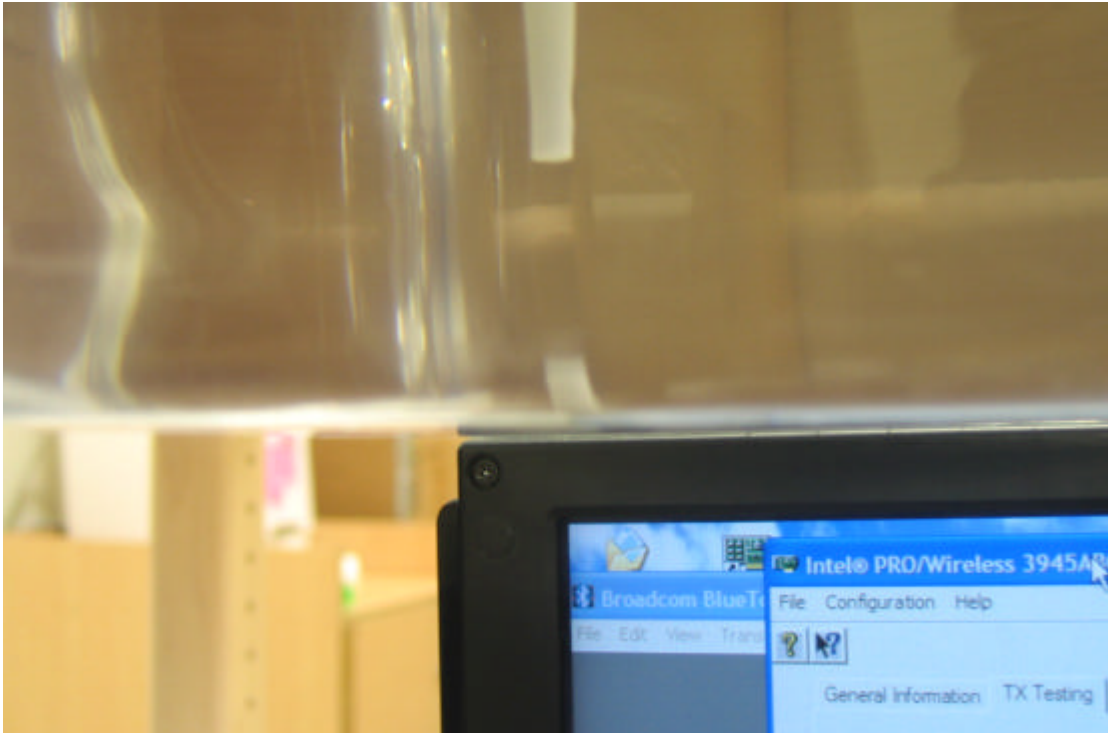
LAPTOP mode



Tablet PL Mode



Tablet PP Mode



Tablet SL Mode

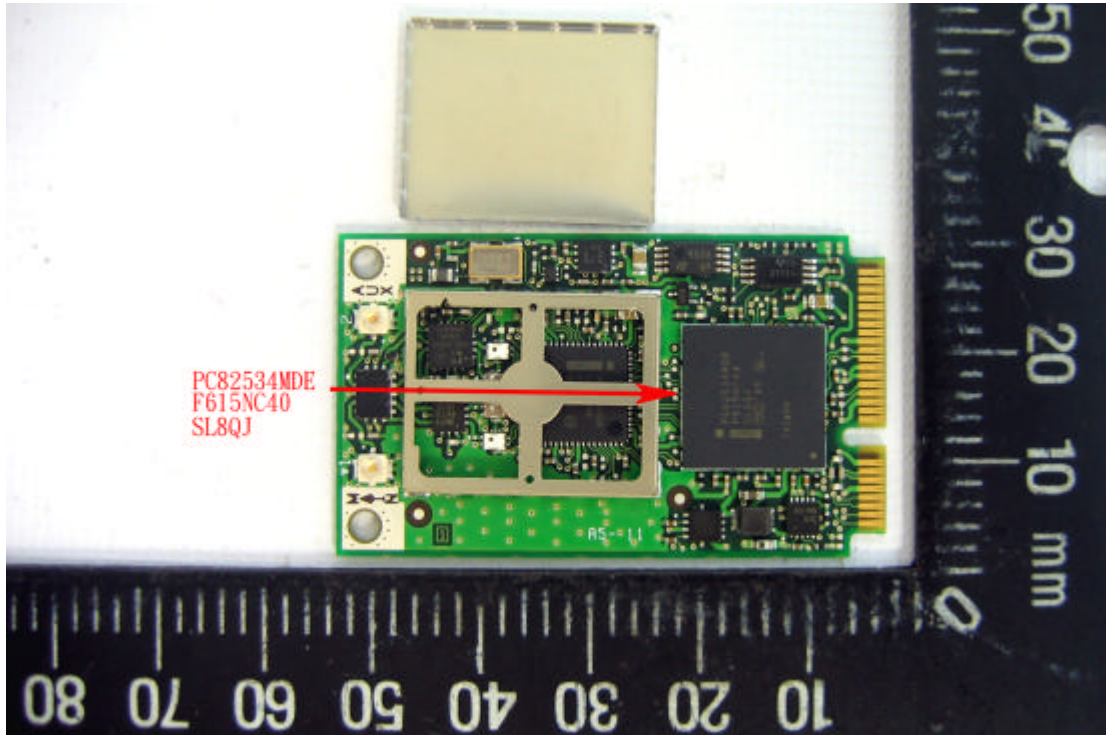


Tablet SP Mode

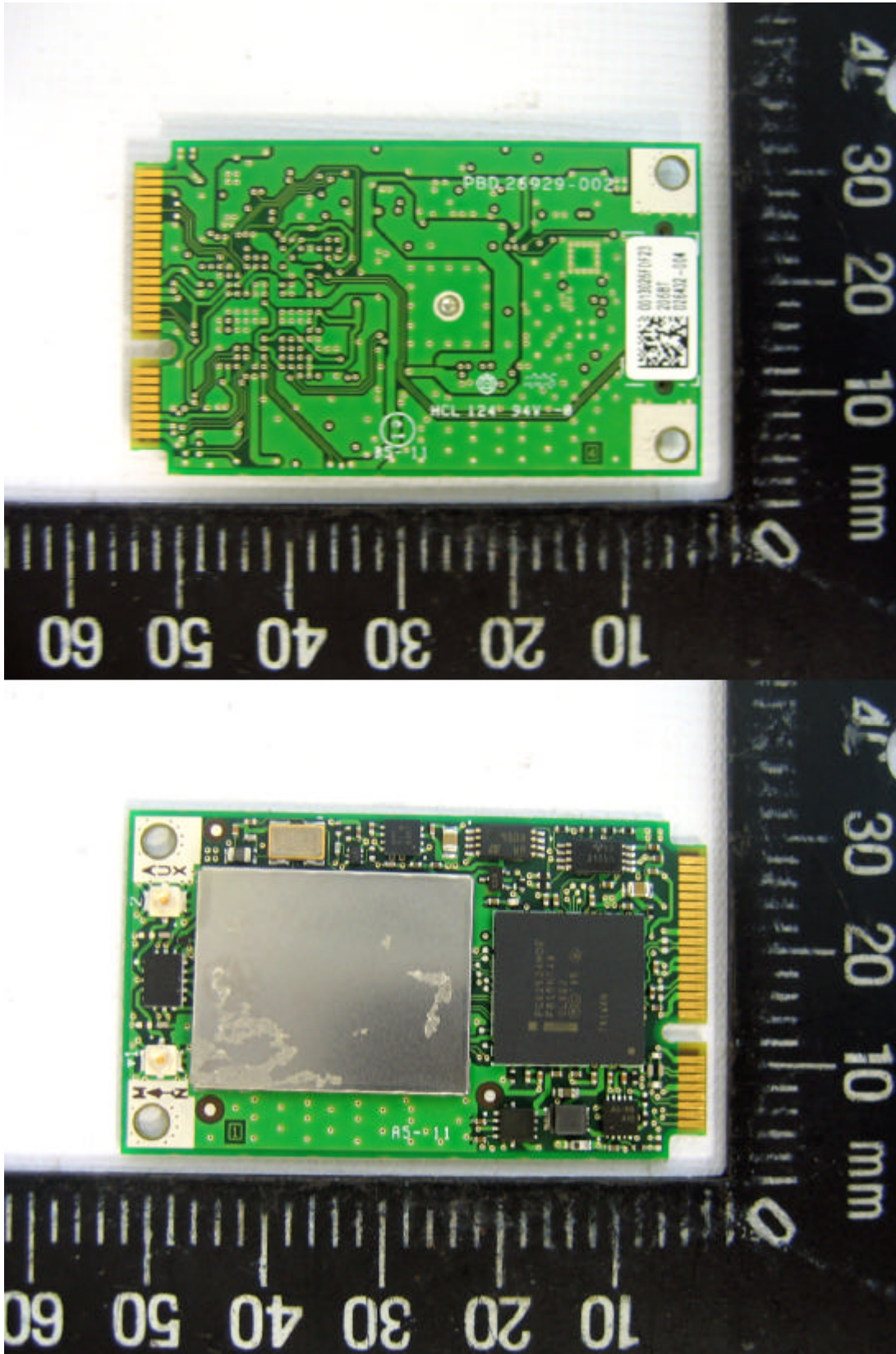


13. EUT Photographs

EUT-1



EUT-2



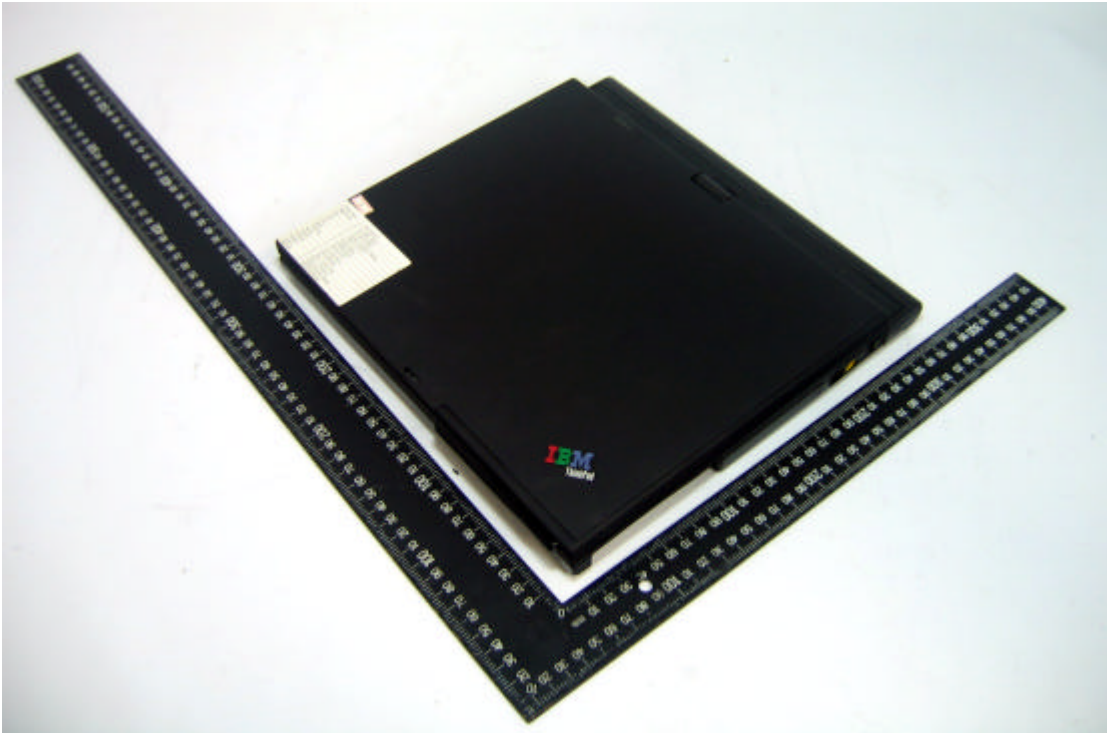
Built_In PC-1



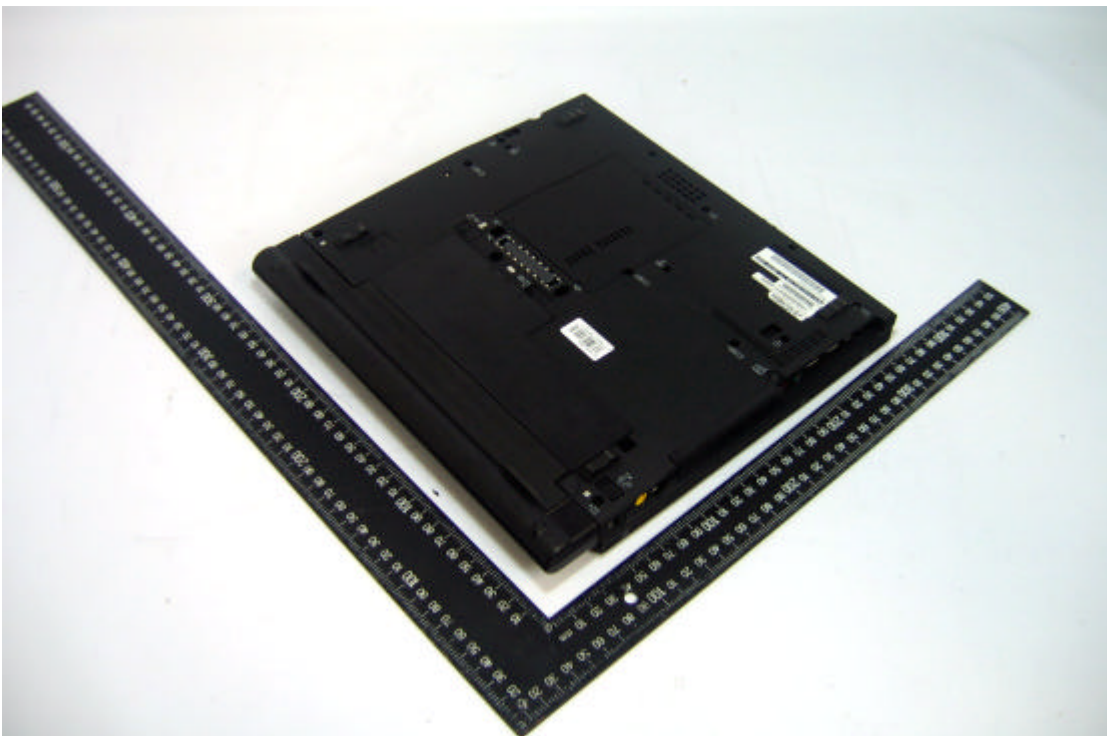
Built_In PC -2



Built_In PC -3



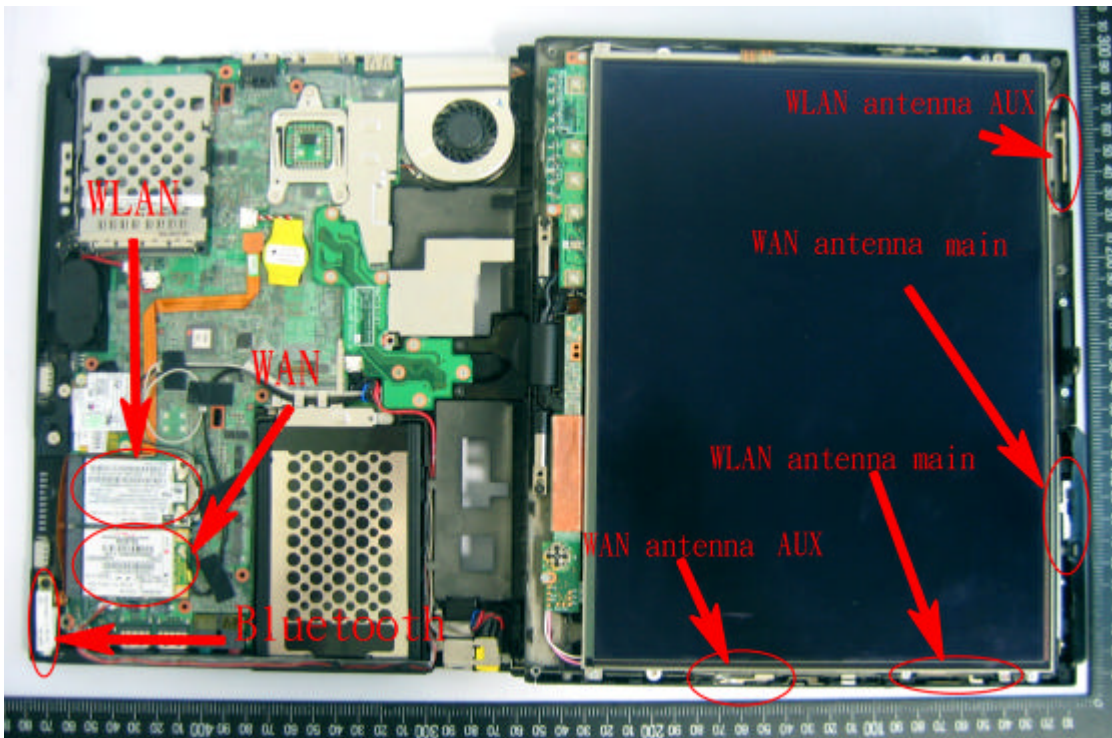
Built_In PC -4



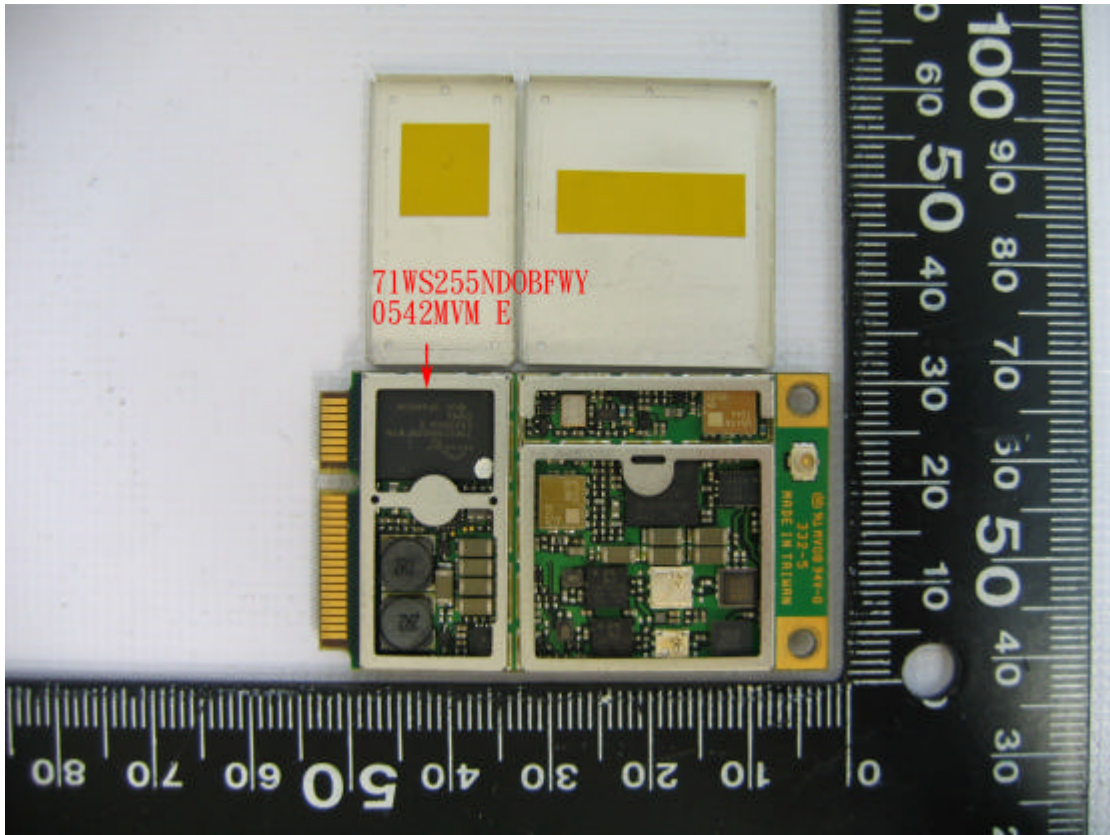
Built_In PC -5



Built_In PC -6



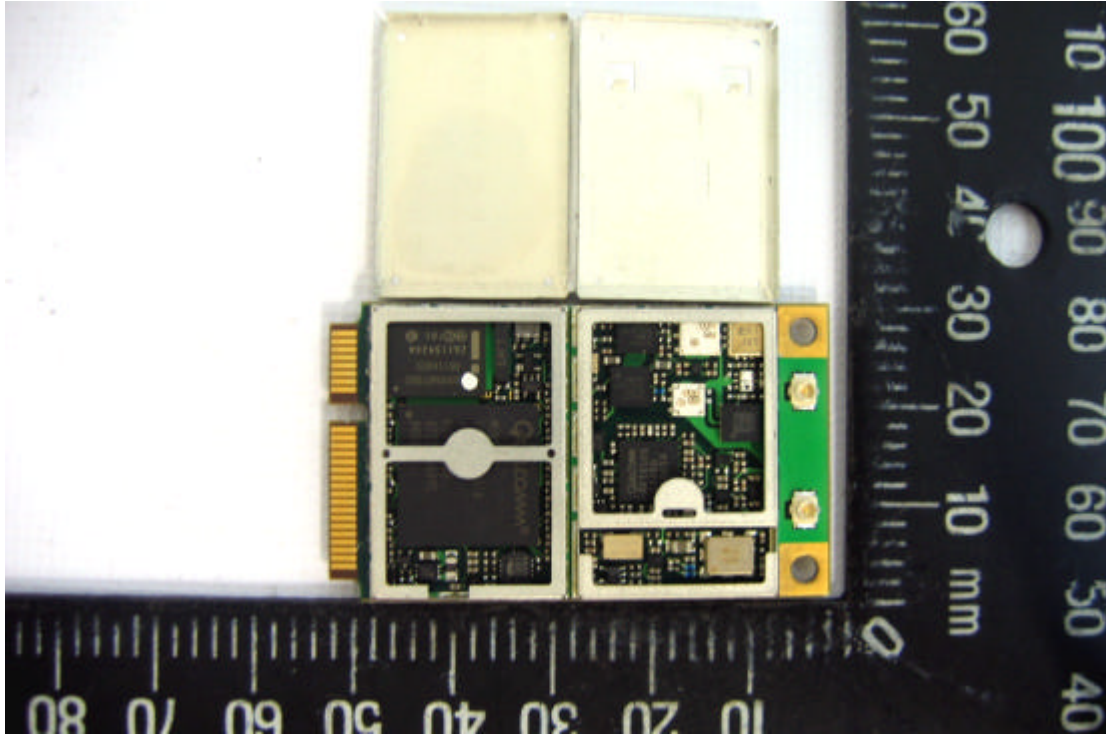
karafuto-1



karafoto-2



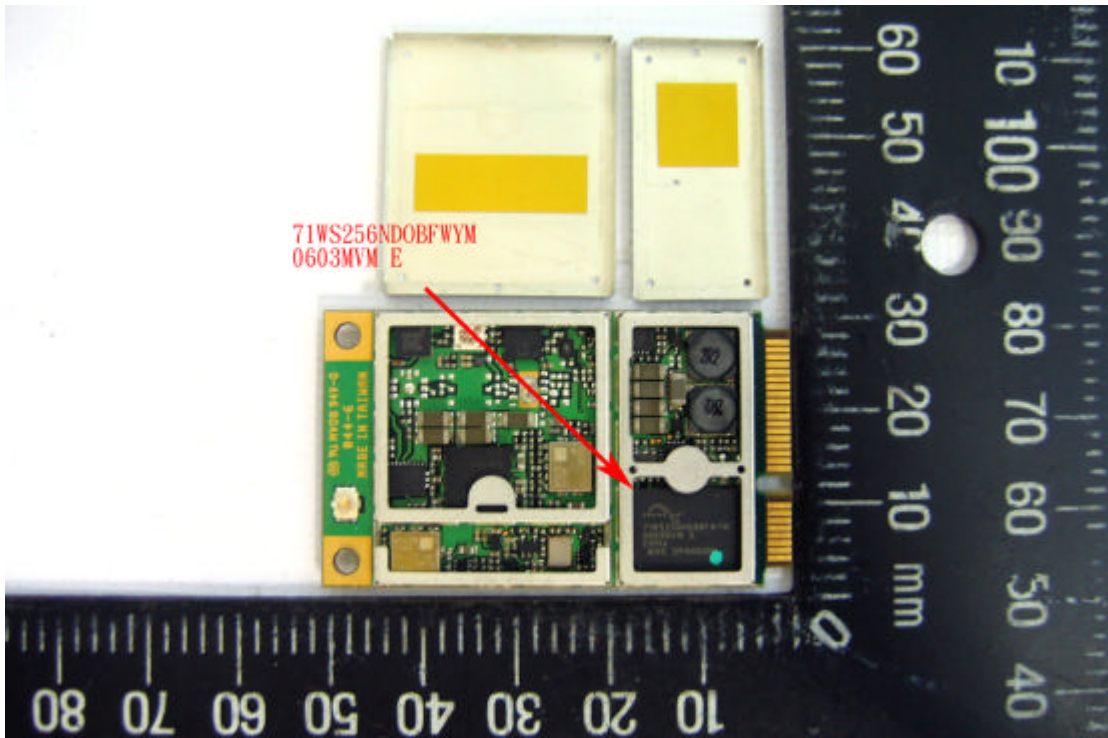
Tosa-1



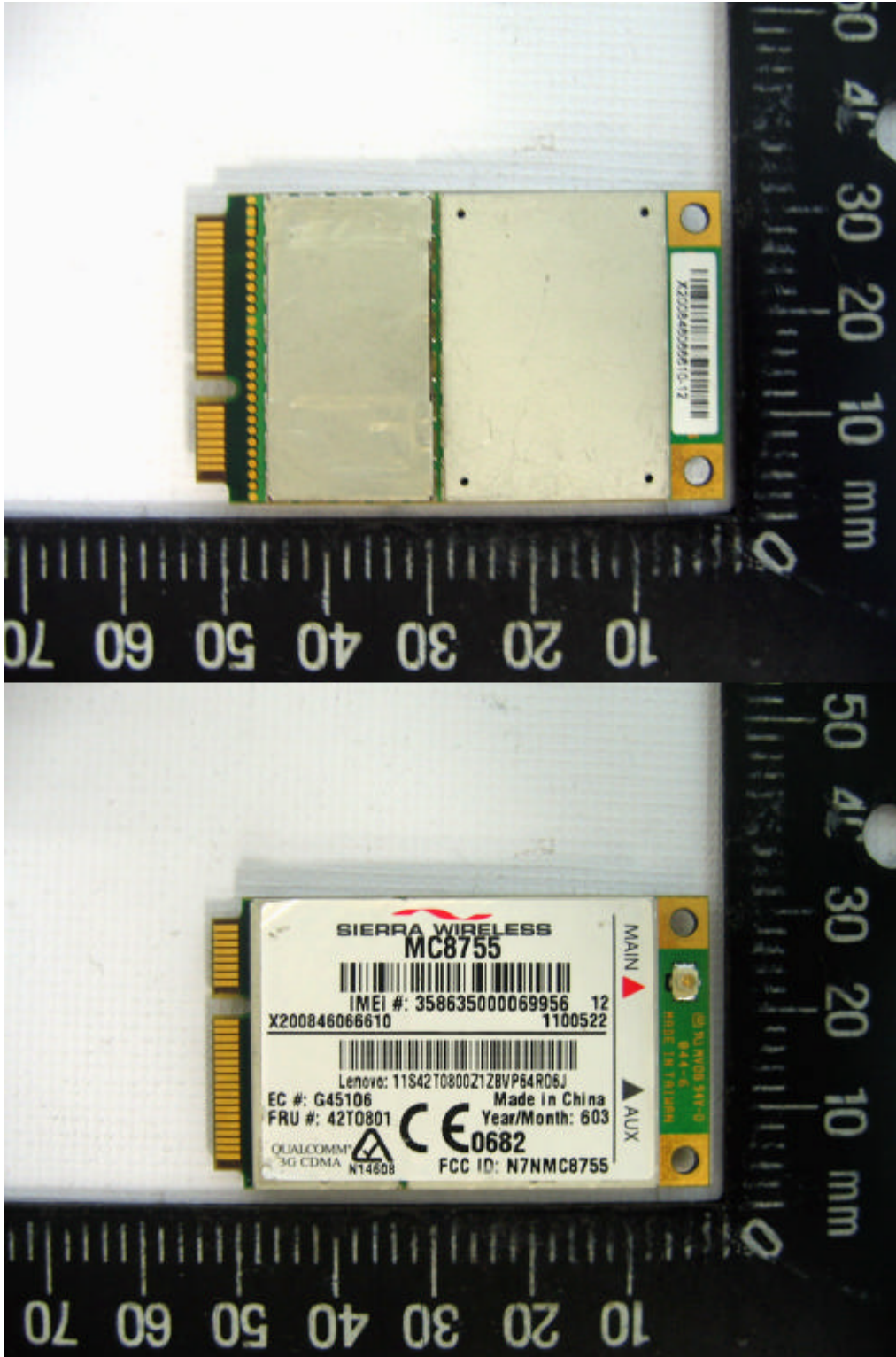
Tosa-2



akita-1



akita-2



14 Appendix: Probe and Validation Dipole calibration

14.1 Probe: Refer to Probe_Cal.Pdf attached.

14.2 Dipole: Refer to Dipole_Cal.pdf attached.