

## 11.2 802.11g

### 11.2.1 2450MHz, EUT Position: Tablet,PL Main

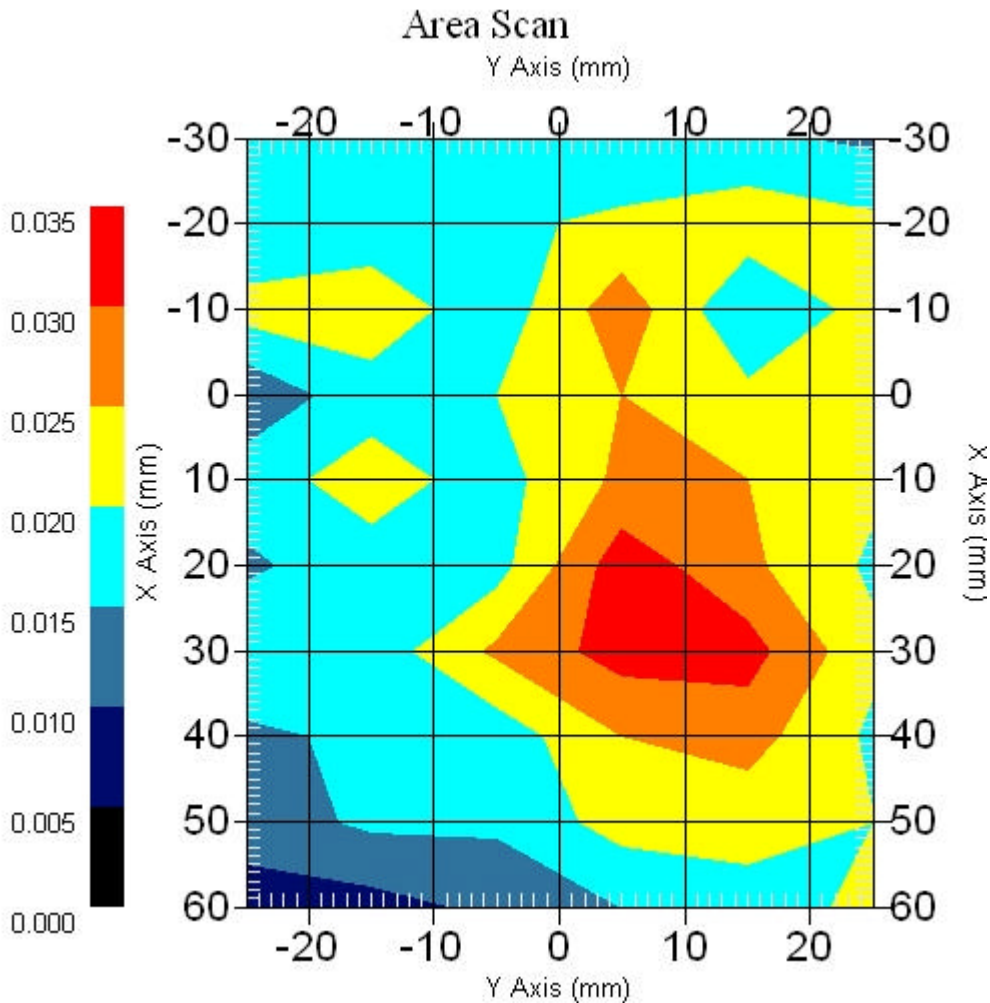
Measurement Data

Crest Factor : 1  
Scan Type : Complete  
Area Scan : 10x6x1 : Measurement x=10mm, y=10mm, z=4mm  
Zoom Scan : 5x5x8 : Measurement x=8mm, y=8mm, z=4mm

Other Data

DUT Position : Touch  
Separation : 0  
Channel : Mid - 2437MHz

Power Drift-Start : 0.024 W/kg  
Power Drift-Finish: 0.025 W/kg  
Power Drift (%) : 4.166



1 gram SAR value : 0.032 W/kg  
10 gram SAR value : 0.023 W/kg  
Area Scan Peak SAR : 0.033 W/kg  
Zoom Scan Peak SAR : 0.050 W/kg

### 11.2.2 2450MHz, EUT Position: Tablet,PP Aux.

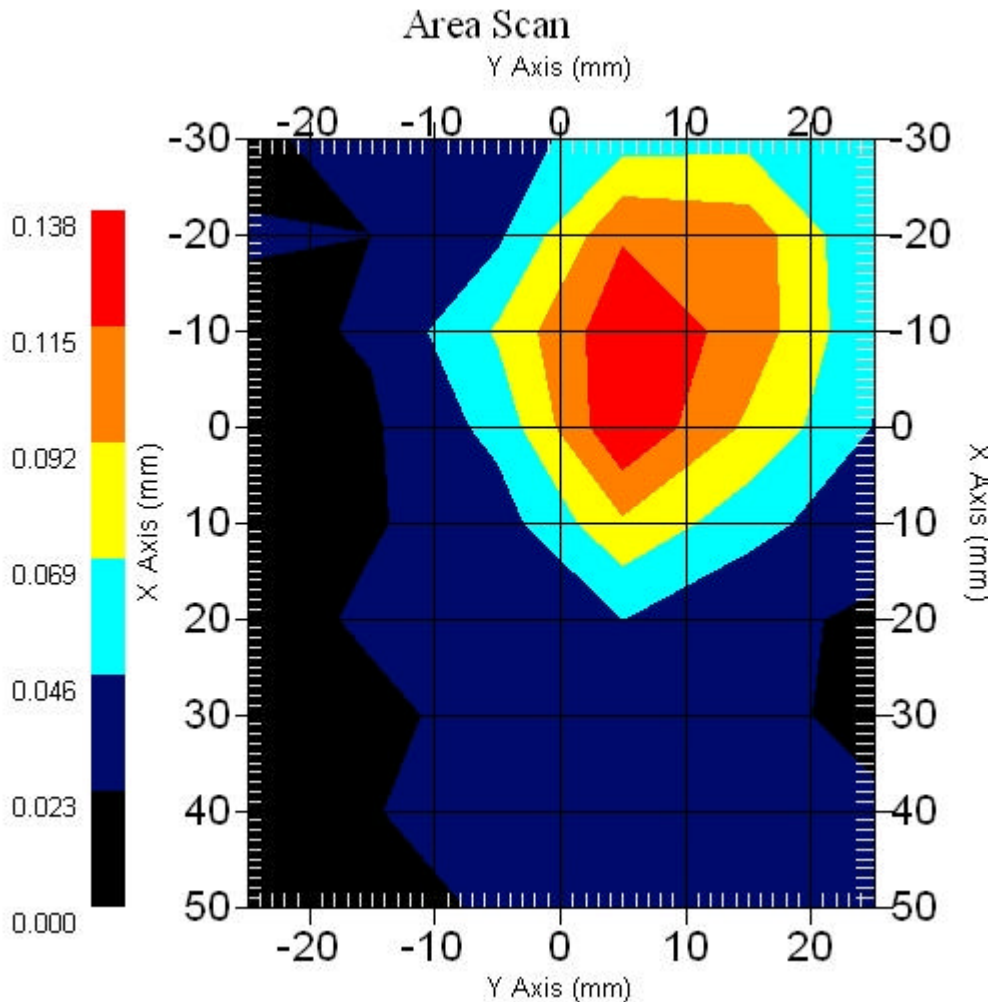
Measurement Data

Crest Factor : 1  
Scan Type : Complete  
Area Scan : 9x6x1 : Measurement x=10mm, y=10mm, z=4mm  
Zoom Scan : 5x5x8 : Measurement x=8mm, y=8mm, z=4mm

Other Data

DUT Position : Touch  
Separation : 0  
Channel : Mid - 2437MHz

Power Drift-Start : 0.109 W/kg  
Power Drift-Finish: 0.104 W/kg  
Power Drift (%) : -4.007



1 gram SAR value : 0.142 W/kg  
10 gram SAR value : 0.071 W/kg  
Area Scan Peak SAR : 0.136 W/kg  
Zoom Scan Peak SAR : 0.271 W/kg

### 11.2.3 2450MHz, EUT Position: Tablet,SL Main

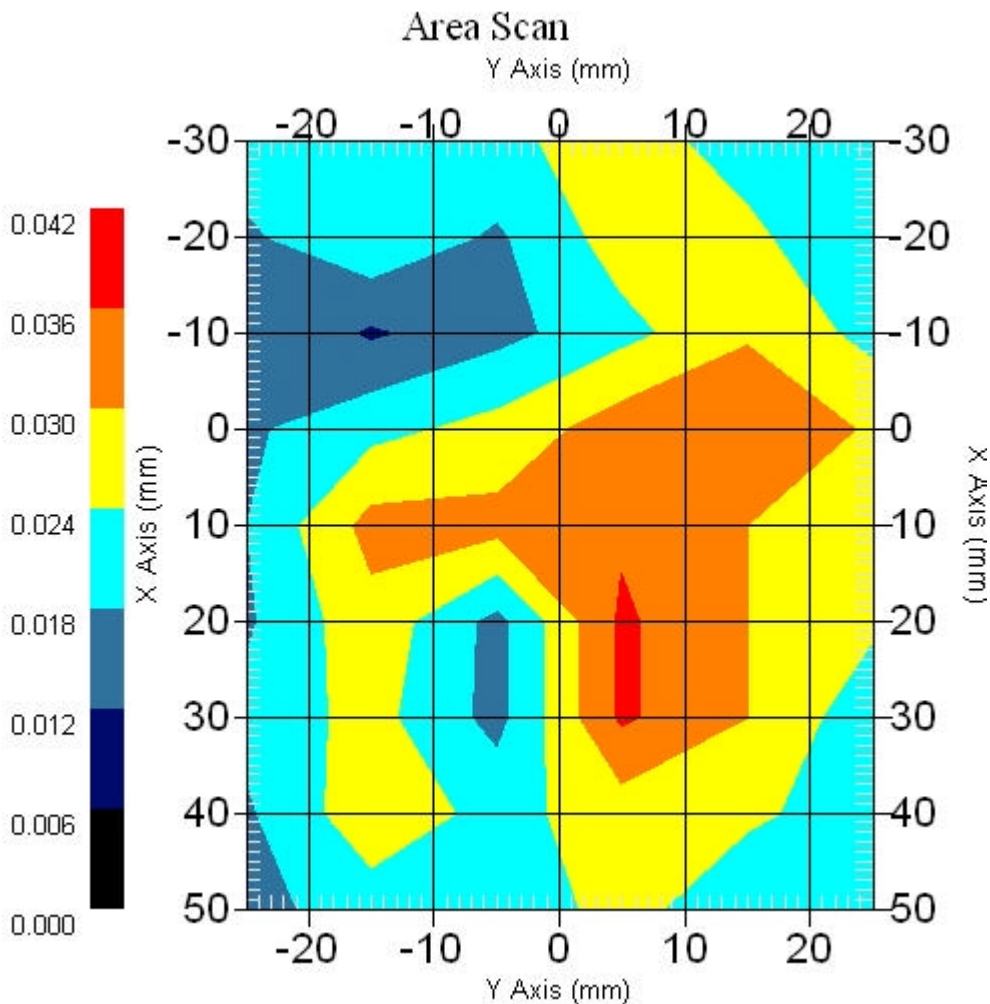
Measurement Data

Crest Factor : 1  
Scan Type : Complete  
Area Scan : 9x6x1 : Measurement x=10mm, y=10mm, z=4mm  
Zoom Scan : 5x5x8 : Measurement x=8mm, y=8mm, z=4mm

Other Data

DUT Position : Touch  
Separation : 0  
Channel : Mid - 2437MHz

Power Drift-Start : 0.036 W/kg  
Power Drift-Finish: 0.035 W/kg  
Power Drift (%) : -2.779



1 gram SAR value : 0.040 W/kg  
10 gram SAR value : 0.026 W/kg  
Area Scan Peak SAR : 0.037 W/kg  
Zoom Scan Peak SAR : 0.065 W/kg

### 11.2.4 2450MHz, EUT Position: Tablet,SP Aux.

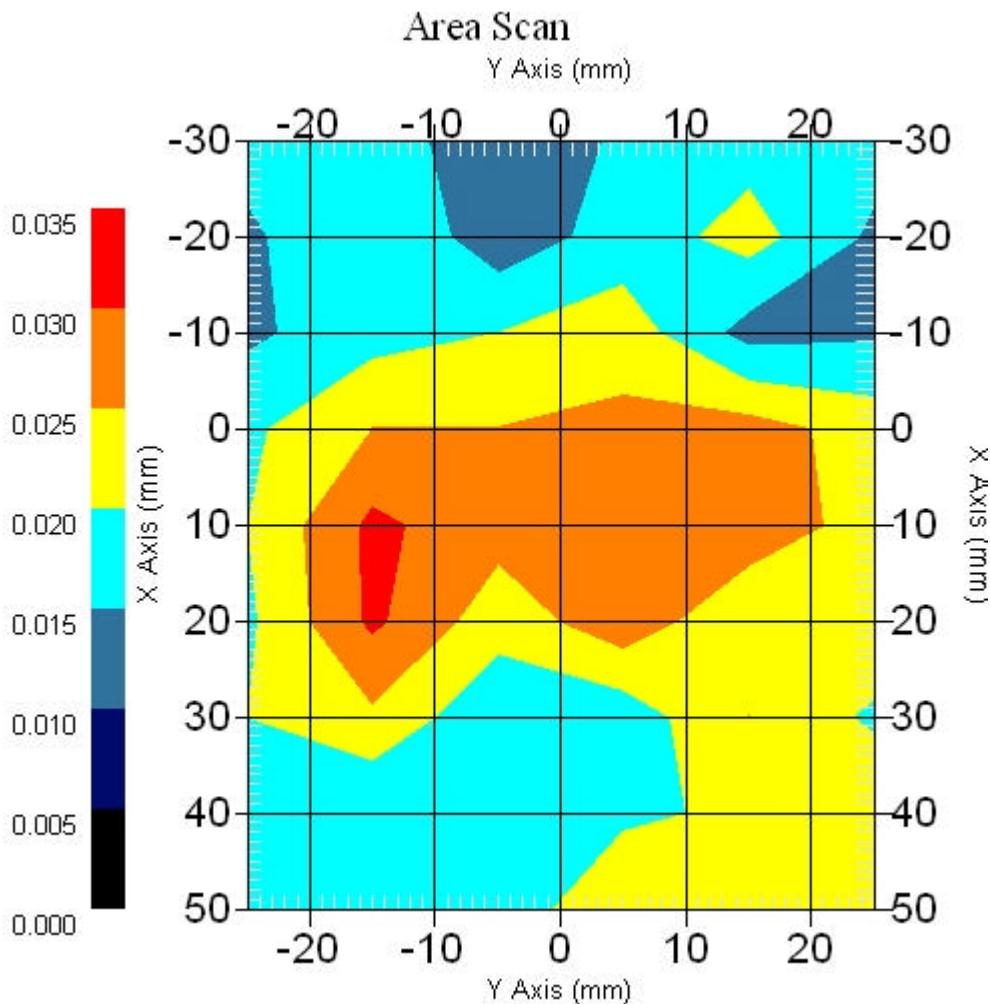
Measurement Data

Crest Factor : 1  
Scan Type : Complete  
Area Scan : 9x6x1 : Measurement x=10mm, y=10mm, z=4mm  
Zoom Scan : 5x5x8 : Measurement x=8mm, y=8mm, z=4mm

Other Data

DUT Position : Touch  
Separation : 0  
Channel : Mid - 2437MHz

Power Drift-Start : 0.031 W/kg  
Power Drift-Finish: 0.031 W/kg  
Power Drift (%) : 0.010



1 gram SAR value : 0.033 W/kg  
10 gram SAR value : 0.022 W/kg  
Area Scan Peak SAR : 0.031 W/kg  
Zoom Scan Peak SAR : 0.060 W/kg

### 11.2.5 2450MHz, EUT Position: Laptop Main

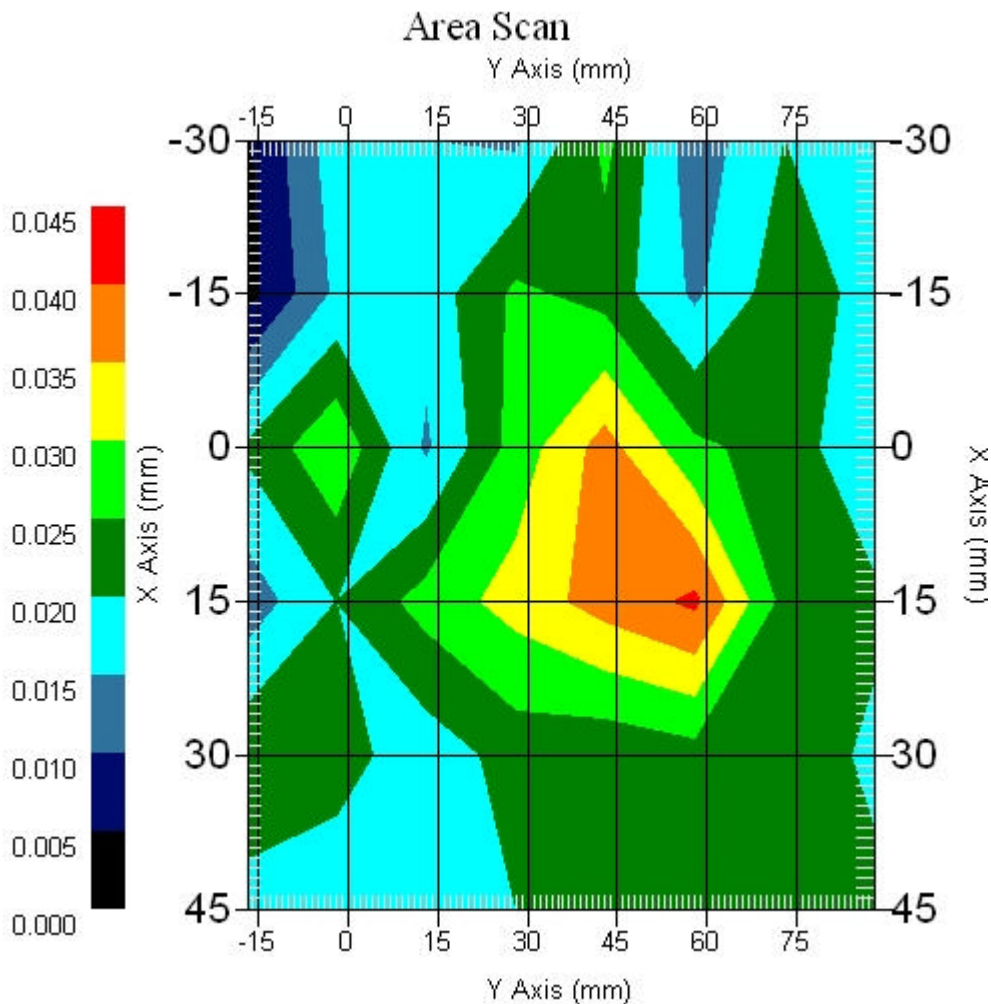
Measurement Data

Crest Factor : 1  
Scan Type : Complete  
Area Scan : 6x8x1 : Measurement x=15mm, y=15mm, z=4mm  
Zoom Scan : 5x5x8 : Measurement x=8mm, y=8mm, z=4mm

Other Data

DUT Position : Touch  
Separation : 0  
Channel : Mid - 2437MHz

Power Drift-Start : 0.024 W/kg  
Power Drift-Finish: 0.025 W/kg  
Power Drift (%) : 4.166



1 gram SAR value : 0.042 W/kg  
10 gram SAR value : 0.030 W/kg  
Area Scan Peak SAR : 0.041 W/kg  
Zoom Scan Peak SAR : 0.063 W/kg

### 11.2.6 2450MHz, EUT Position: Laptop Aux.

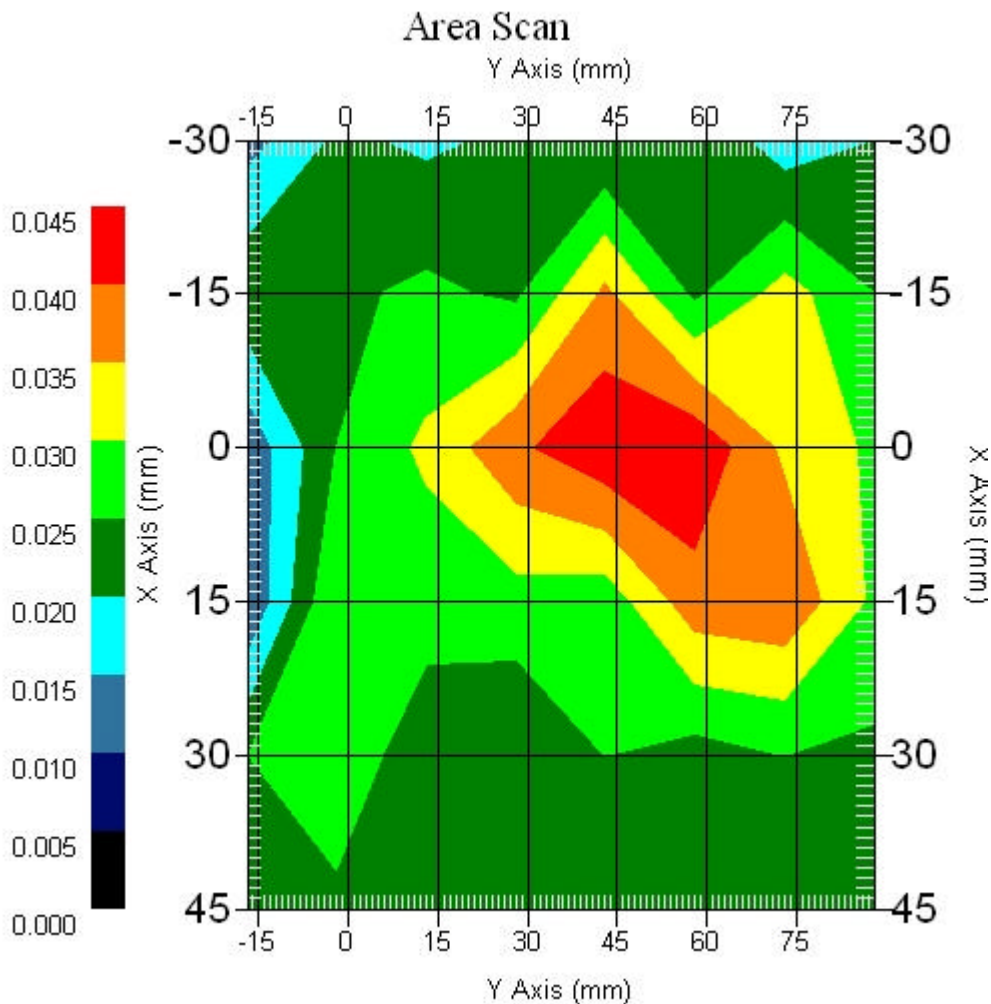
Measurement Data

Crest Factor : 1  
Scan Type : Complete  
Area Scan : 6x8x1 : Measurement x=15mm, y=15mm, z=4mm  
Zoom Scan : 5x5x8 : Measurement x=8mm, y=8mm, z=4mm

Other Data

DUT Position : Touch  
Separation : 0  
Channel : Mid - 2437MHz

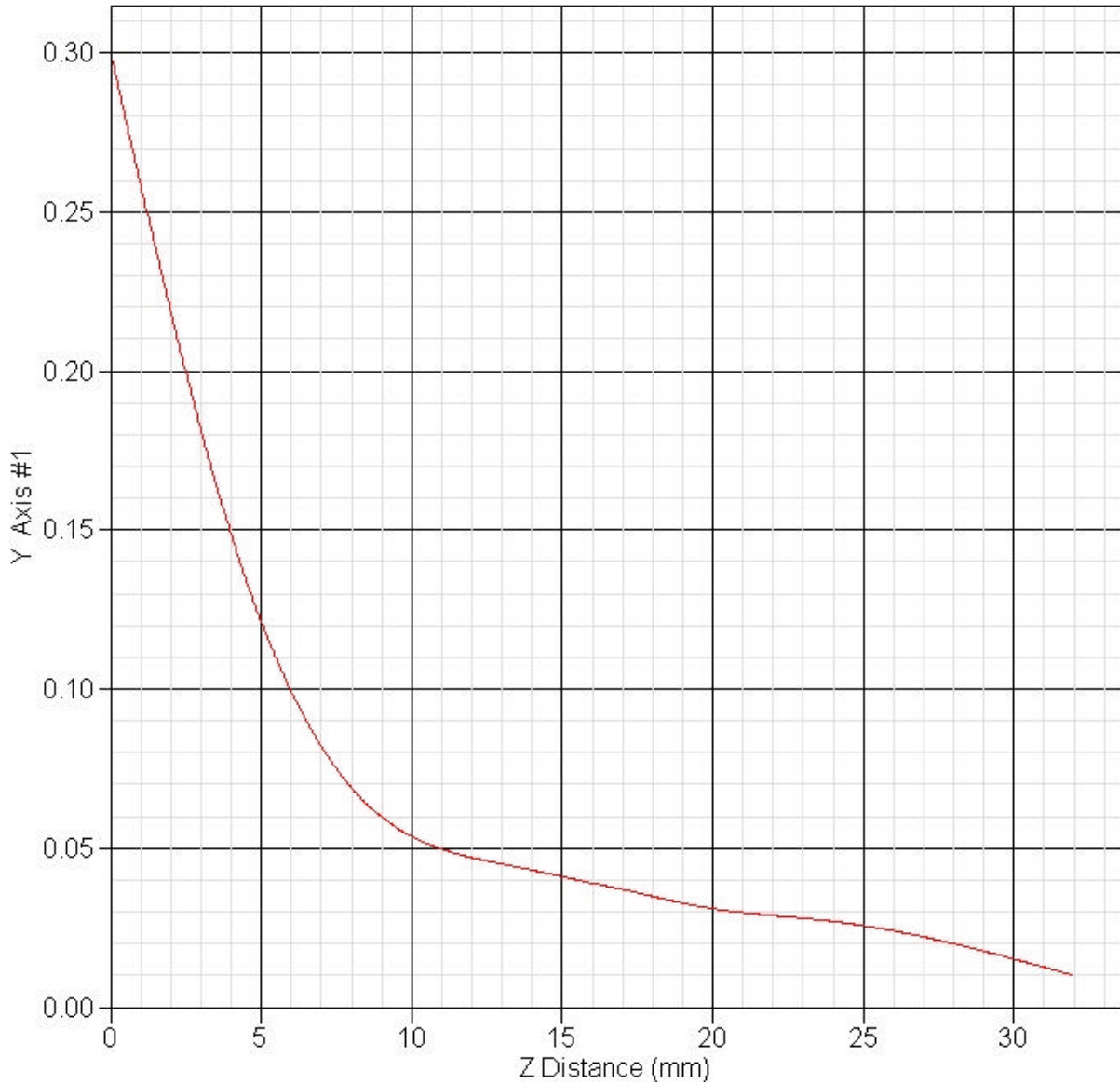
Power Drift-Start : 0.030 W/kg  
Power Drift-Finish: 0.031 W/kg  
Power Drift (%) : 2.691



1 gram SAR value : 0.047 W/kg  
10 gram SAR value : 0.032 W/kg  
Area Scan Peak SAR : 0.044 W/kg  
Zoom Scan Peak SAR : 0.095 W/kg

11.2.7 Frequency: 802.11g 2450MHz, EUT Tablet,PP Aux. Antenna

SAR-Z Axis  
at Hotspot x:-15.50 y:12.70



### 11.3 802.11a

#### 11.3.1 5200MHz, EUT Position: Tablet,PL Main

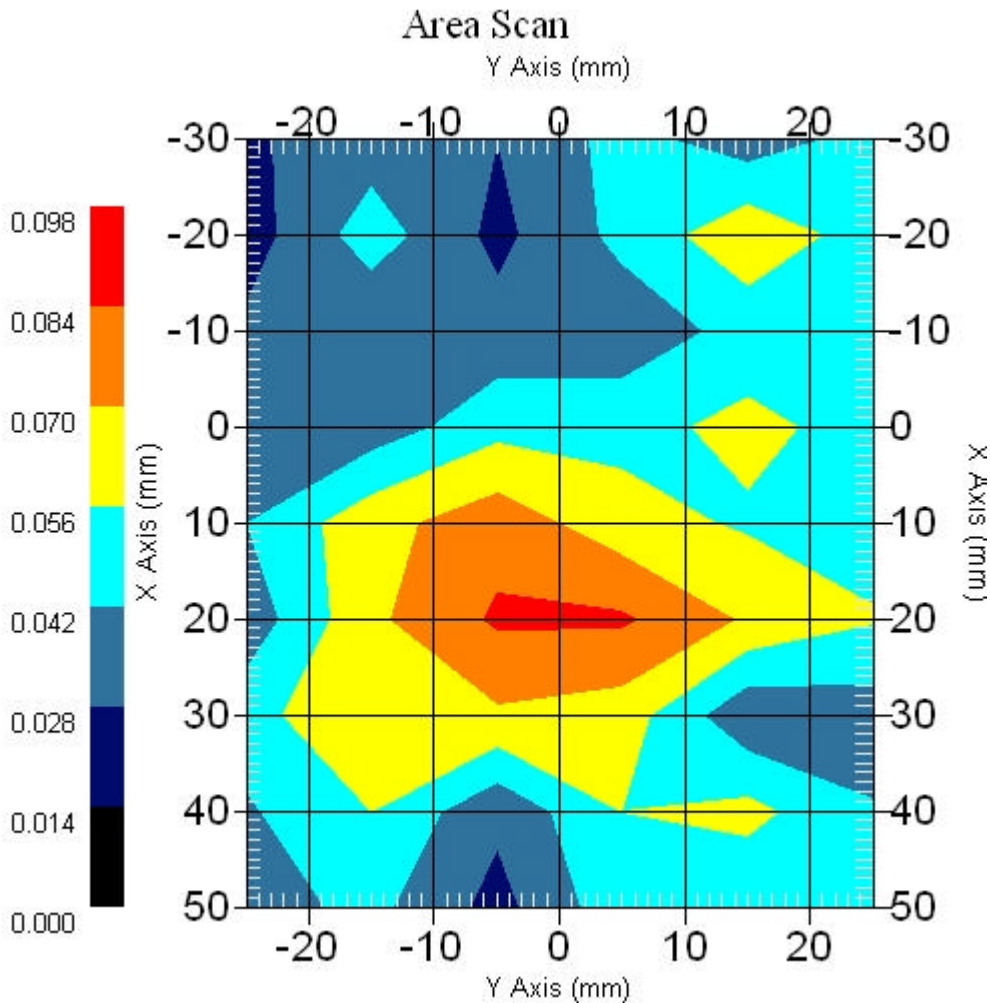
Measurement Data

Crest Factor : 1  
Scan Type : Complete  
Area Scan : 9x6x1 : Measurement x=10mm, y=10mm, z=4mm  
Zoom Scan : 9x9x13 : Measurement x=4mm, y=4mm, z=2.5mm

Other Data

DUT Position : Touch  
Separation : 0  
Channel : Mid - 5260MHz

Power Drift-Start : 0.043 W/kg  
Power Drift-Finish: 0.041 W/kg  
Power Drift (%) : -4.651



1 gram SAR value : 0.093 W/kg  
10 gram SAR value : 0.065 W/kg  
Area Scan Peak SAR : 0.086 W/kg  
Zoom Scan Peak SAR : 0.138 W/kg



### 11.3.2 5200MHz, EUT Position: Tablet,PP Aux.

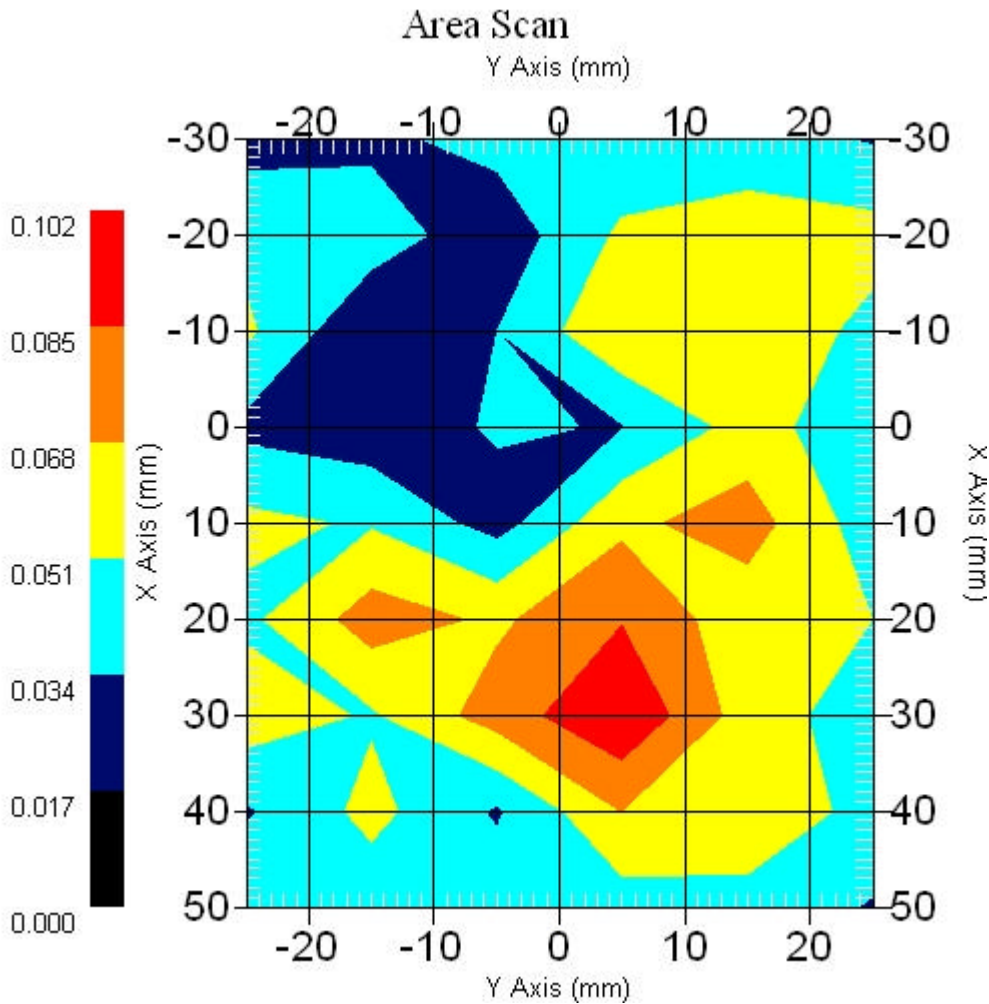
Measurement Data

Crest Factor : 1  
Scan Type : Complete  
Area Scan : 9x6x1 : Measurement x=10mm, y=10mm, z=4mm  
Zoom Scan : 9x9x13 : Measurement x=4mm, y=4mm, z=2.5mm

Other Data

DUT Position : Touch  
Separation : 0  
Channel : Mid - 5260MHz

Power Drift-Start : 0.050 W/kg  
Power Drift-Finish: 0.051 W/kg  
Power Drift (%) : 2.000



1 gram SAR value : 0.097 W/kg  
10 gram SAR value : 0.075 W/kg  
Area Scan Peak SAR : 0.100 W/kg  
Zoom Scan Peak SAR : 0.162 W/kg

### 11.3.3 5200MHz, EUT Position: Tablet,SL Main

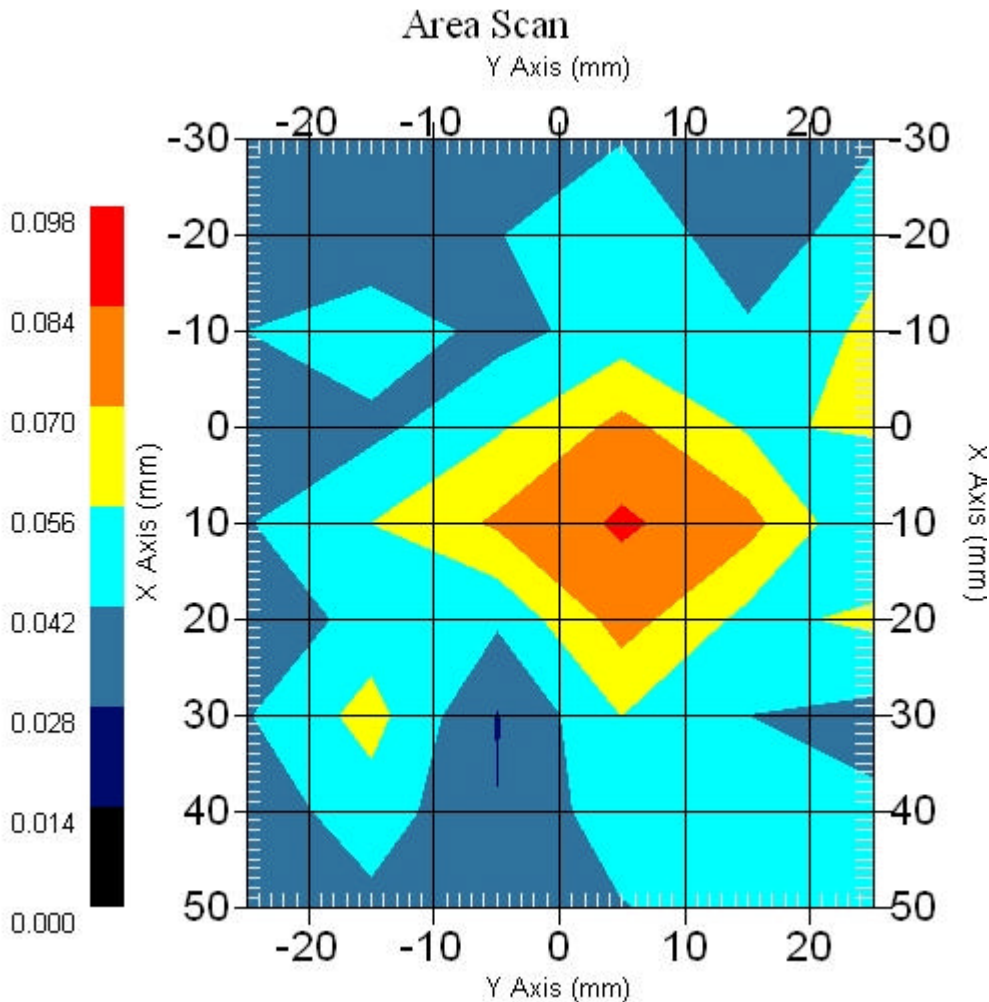
Measurement Data

Crest Factor : 1  
Scan Type : Complete  
Area Scan : 9x6x1 : Measurement x=10mm, y=10mm, z=4mm  
Zoom Scan : 9x9x13 : Measurement x=4mm, y=4mm, z=2.5mm

Other Data

DUT Position : Touch  
Separation : 0  
Channel : Mid - 5260MHz

Power Drift-Start : 0.066 W/kg  
Power Drift-Finish: 0.068 W/kg  
Power Drift (%) : 3.030



1 gram SAR value : 0.062 W/kg  
10 gram SAR value : 0.052 W/kg  
Area Scan Peak SAR : 0.087 W/kg  
Zoom Scan Peak SAR : 0.140 W/kg

### 11.3.4 5200MHz, EUT Position: Tablet,SP Aux.

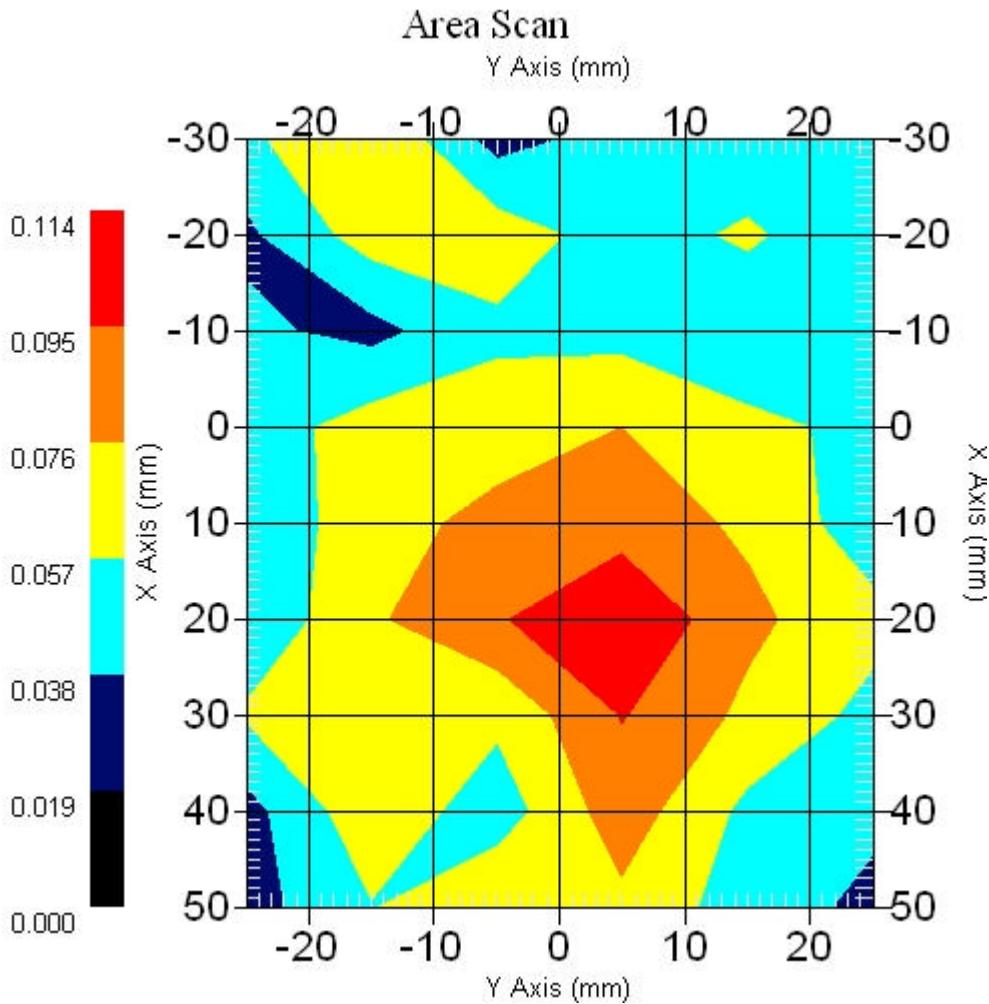
Measurement Data

Crest Factor : 1  
Scan Type : Complete  
Area Scan : 9x6x1 : Measurement x=10mm, y=10mm, z=4mm  
Zoom Scan : 9x9x13 : Measurement x=4mm, y=4mm, z=2.5mm

Other Data

DUT Position : Touch  
Separation : 0  
Channel : Mid - 5260MHz

Power Drift-Start : 0.083 W/kg  
Power Drift-Finish: 0.086 W/kg  
Power Drift (%) : 3.170



1 gram SAR value : 0.125 W/kg  
10 gram SAR value : 0.085 W/kg  
Area Scan Peak SAR : 0.114 W/kg  
Zoom Scan Peak SAR : 0.297 W/kg

### 11.3.5 5200MHz, EUT Position: Laptop Main

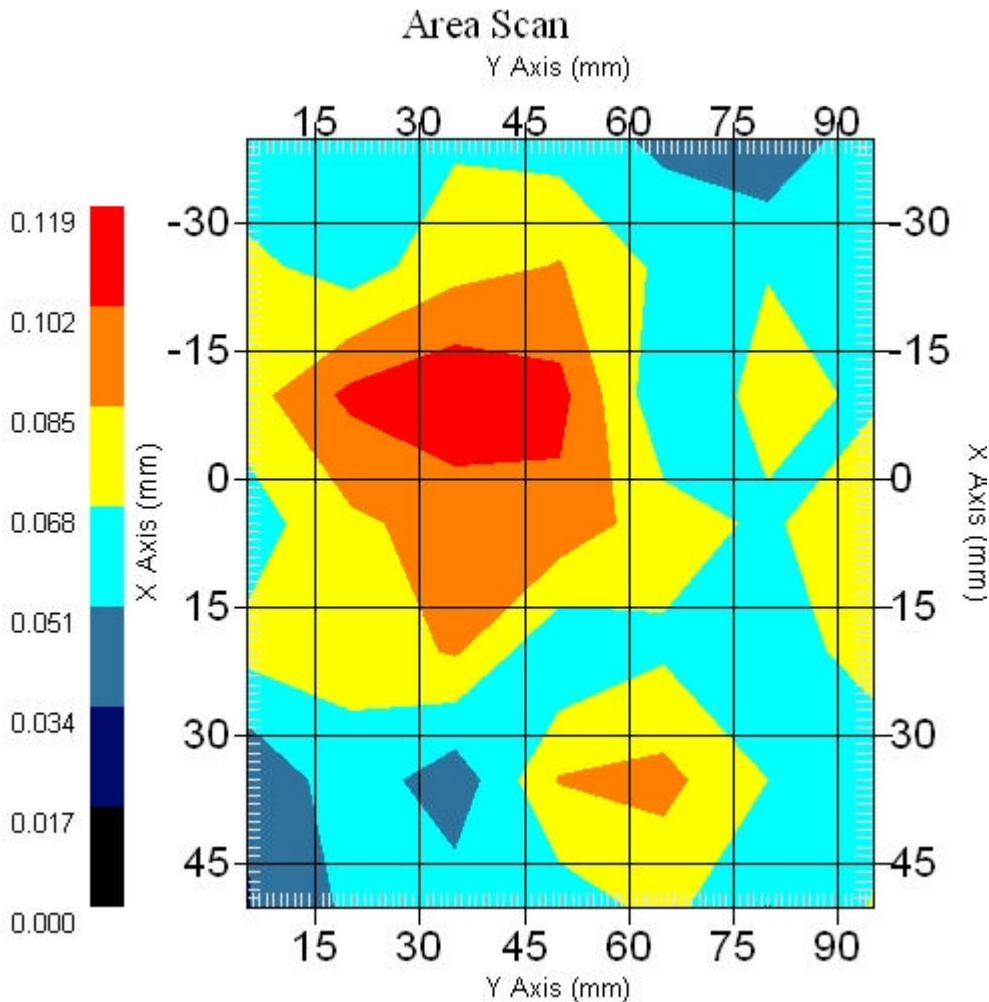
Measurement Data

Crest Factor : 1  
Scan Type : Complete  
Area Scan : 7x7x1 : Measurement x=15mm, y=15mm, z=4mm  
Zoom Scan : 9x9x13 : Measurement x=4mm, y=4mm, z=2.5mm

Other Data

DUT Position : Touch  
Separation : 0  
Channel : Mid - 5260MHz

Power Drift-Start : 0.075 W/kg  
Power Drift-Finish: 0.076 W/kg  
Power Drift (%) : 1.333



1 gram SAR value : 0.095 W/kg  
10 gram SAR value : 0.072 W/kg  
Area Scan Peak SAR : 0.116 W/kg  
Zoom Scan Peak SAR : 0.198 W/kg

### 11.3.6 5200MHz, EUT Position: Laptop Aux.

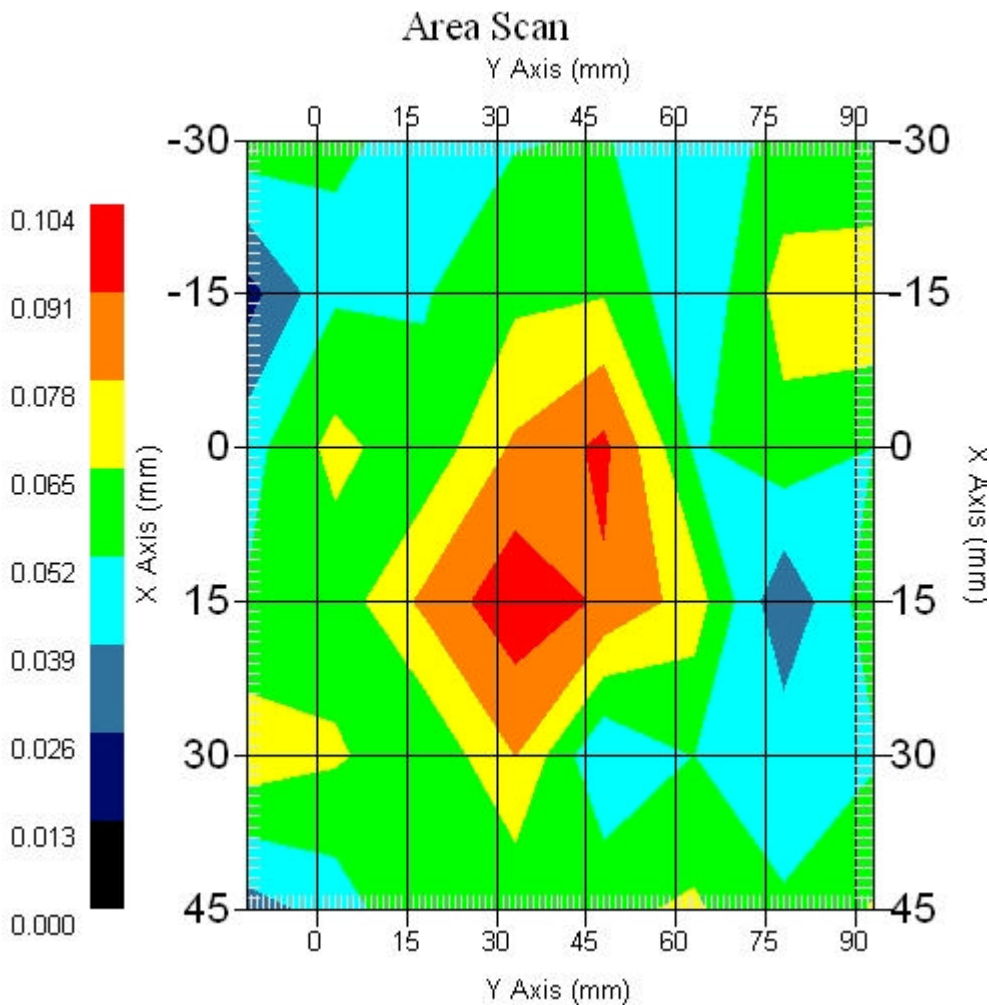
#### Measurement Data

Crest Factor : 1  
 Scan Type : Complete  
 Area Scan : 6x8x1 : Measurement x=15mm, y=15mm, z=4mm  
 Zoom Scan : 9x9x13 : Measurement x=4mm, y=4mm, z=2.5mm

#### Other Data

DUT Position : Touch  
 Separation : 0  
 Channel : Mid - 5260MHz

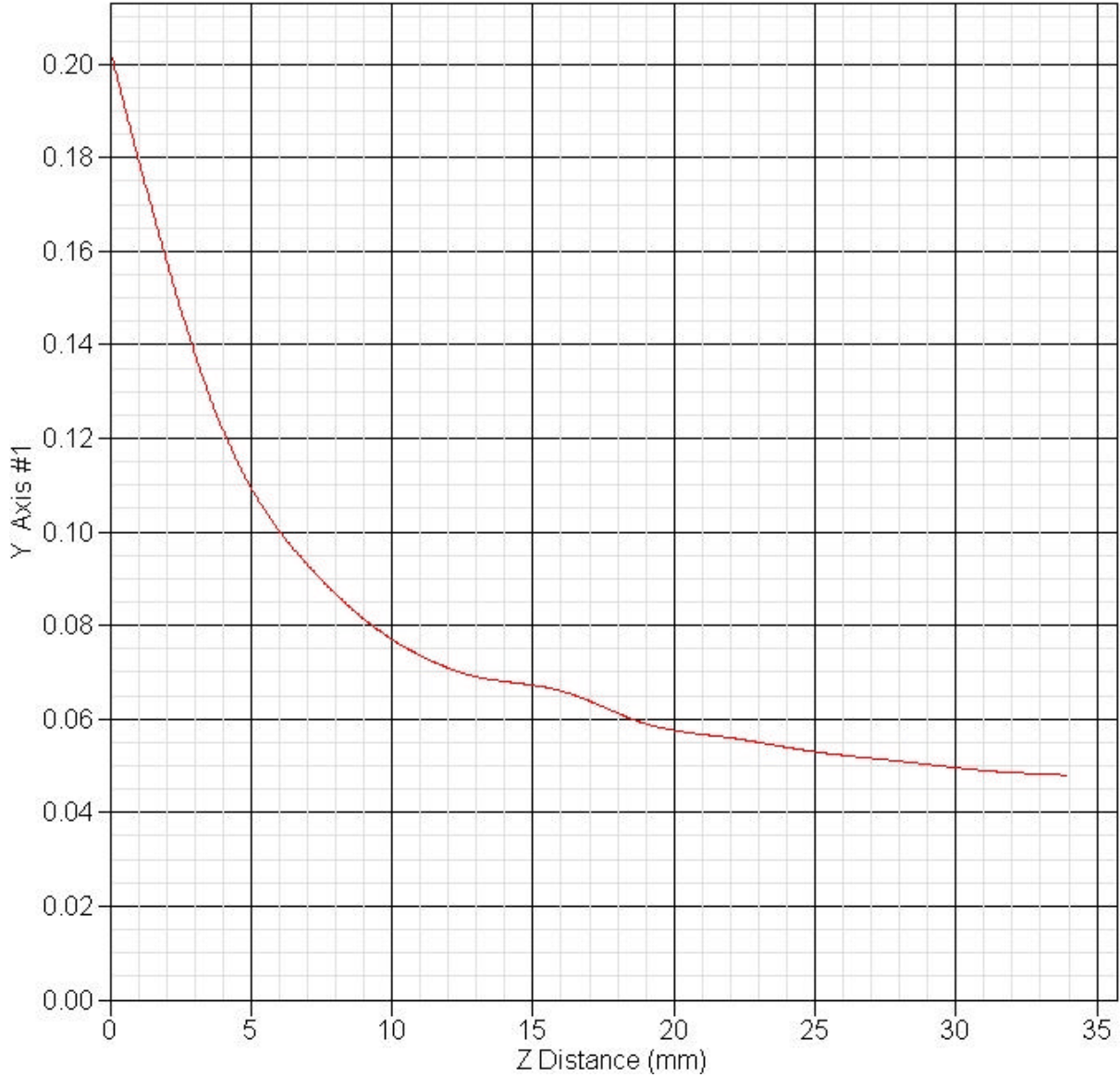
Power Drift-Start : 0.047 W/kg  
 Power Drift-Finish: 0.047 W/kg  
 Power Drift (%) : -0.006



1 gram SAR value : 0.091 W/kg  
 10 gram SAR value : 0.060 W/kg  
 Area Scan Peak SAR : 0.100 W/kg  
 Zoom Scan Peak SAR : 0.172 W/kg

11.3.7 Frequency: 802.11a 5200MHz, EUT Position: Tablet,SP Aux.

SAR-Z Axis  
at Hotspot x:48.30 y:6.70



## 11.4 802.11a

### 11.4.1 5800MHz, EUT Position: Tablet,PL Main

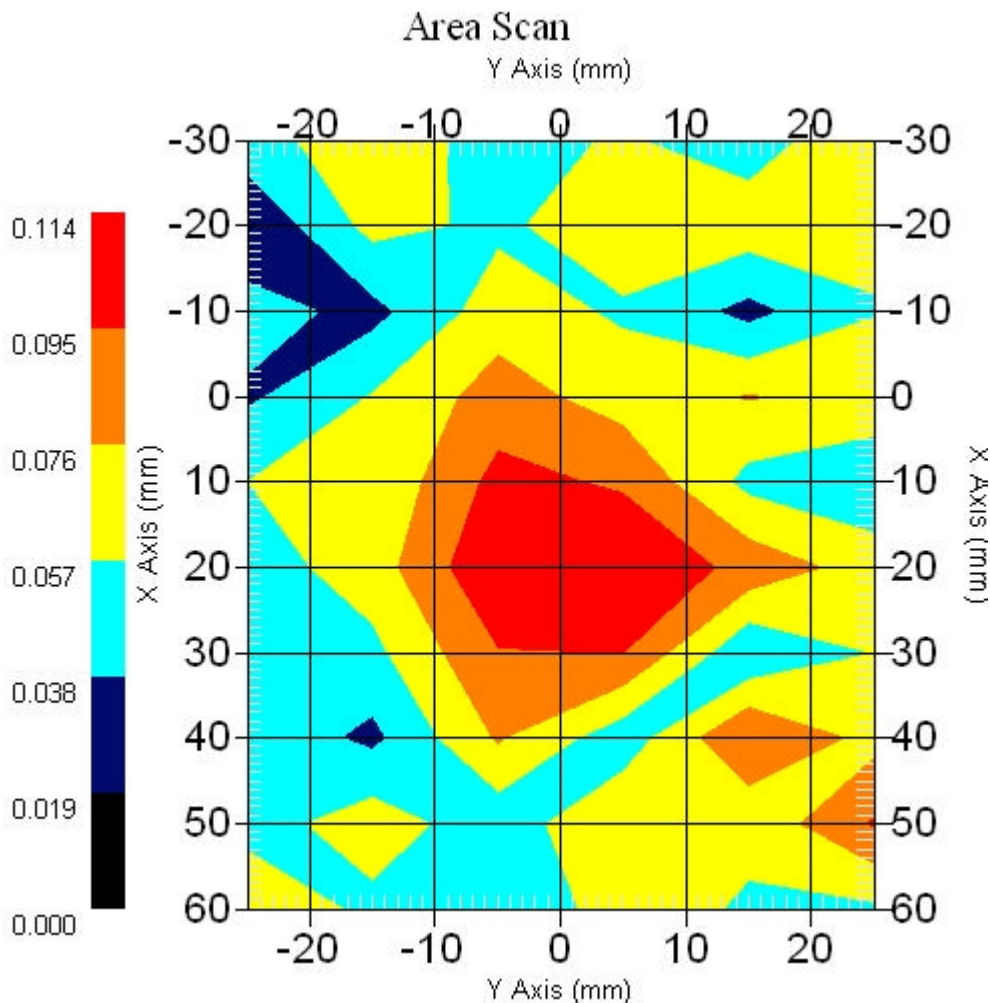
#### Measurement Data

Crest Factor : 1  
 Scan Type : Complete  
 Area Scan : 10x6x1 : Measurement x=10mm, y=10mm, z=4mm  
 Zoom Scan : 9x9x13 : Measurement x=4mm, y=4mm, z=2.5mm

#### Other Data

DUT Position : Touch  
 Separation : 0  
 Channel : Mid - 5785MHz

Power Drift-Start : 0.054 W/kg  
 Power Drift-Finish: 0.056 W/kg  
 Power Drift (%) : 3.703



1 gram SAR value : 0.122 W/kg  
 10 gram SAR value : 0.087 W/kg  
 Area Scan Peak SAR : 0.114 W/kg  
 Zoom Scan Peak SAR : 0.198 W/kg