

■ 5785 MHz Only, EUT Position: Tablet, SP

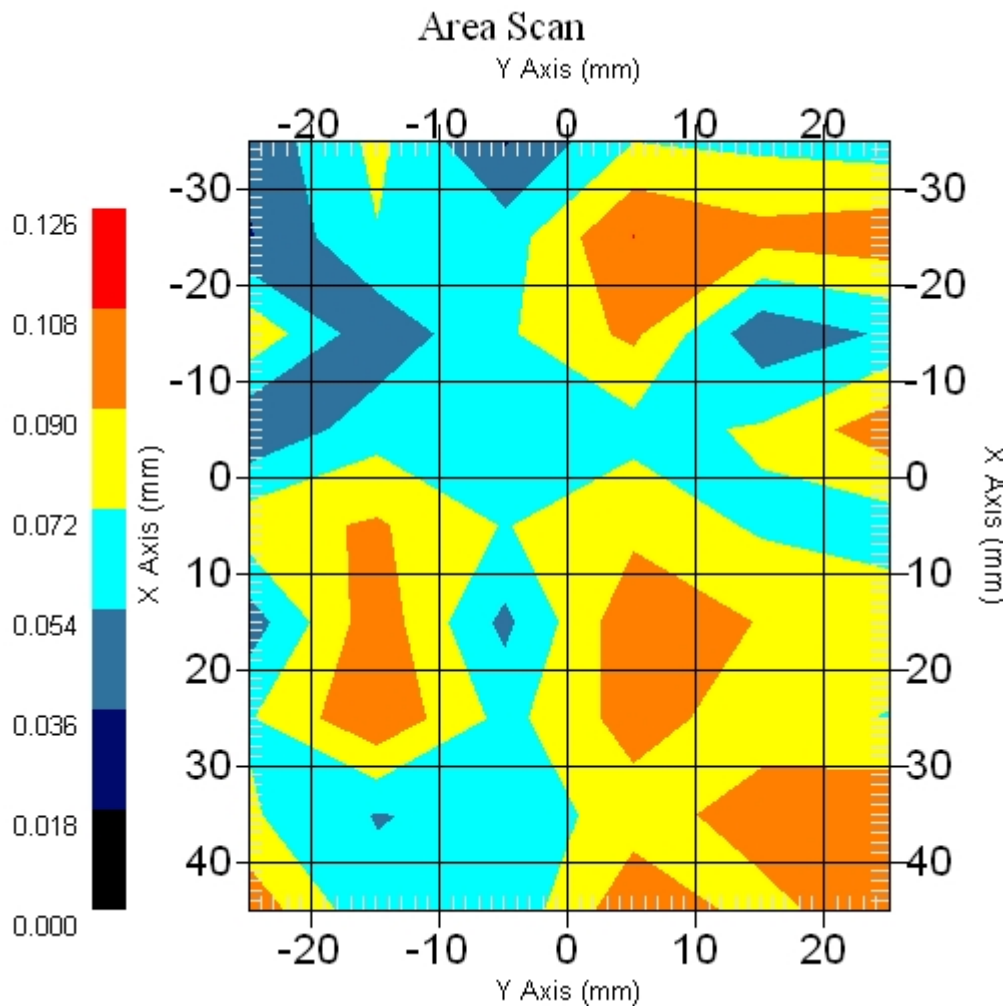
Measurement Data

Crest Factor : 1
Scan Type : Complete
Area Scan : 9x6x1 : Measurement x=10mm, y=10mm, z=4mm
Zoom Scan : 9x9x13 : Measurement x=4mm, y=4mm, z=2.5mm

Other Data

DUT Position : Touch
Separation : 0
Channel : Mid - 5785MHz

Power Drift-Start : 0.091 W/kg
Power Drift-Finish: 0.095 W/kg
Power Drift (%) : 4.395
Picture :



1 gram SAR value : 0.104 W/kg
10 gram SAR value : 0.089 W/kg
Area Scan Peak SAR : 0.108 W/kg
Zoom Scan Peak SAR : 0.110 W/kg

■ 5825 MHz Only, EUT Position: Tablet, SP

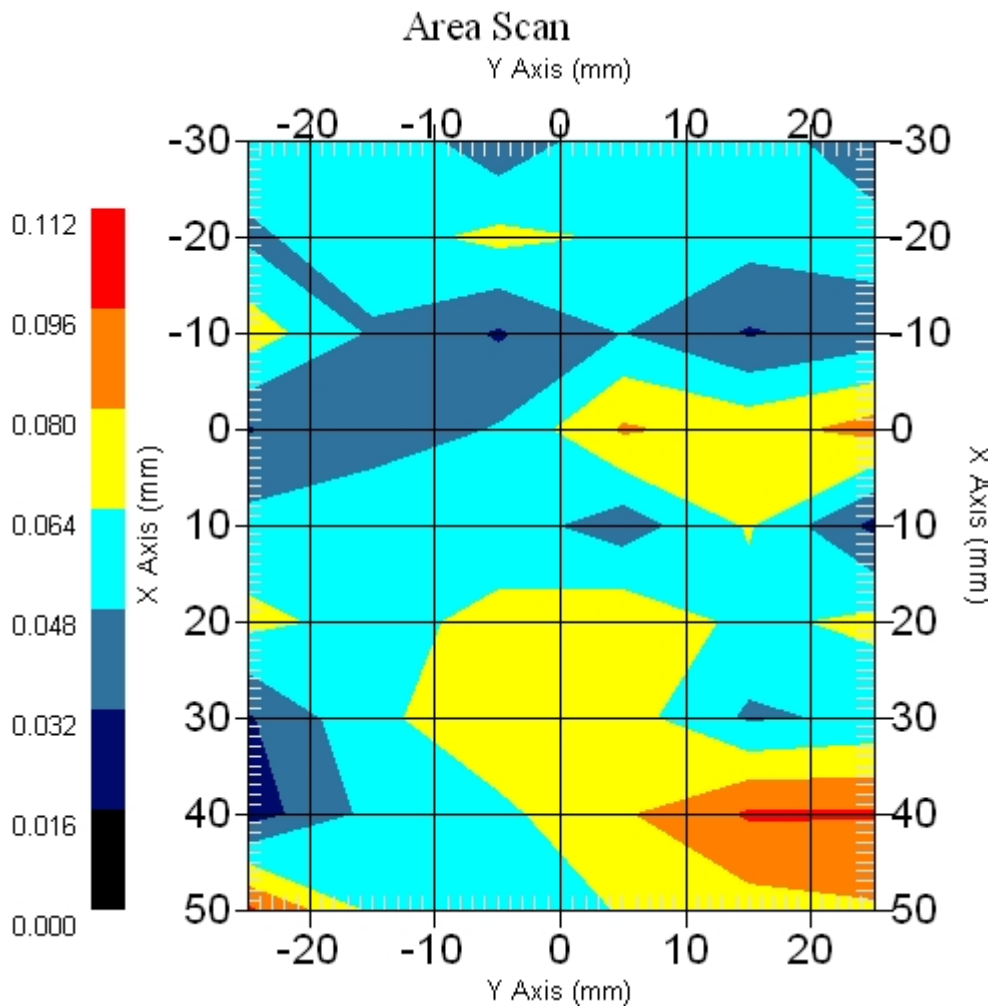
Measurement Data

Crest Factor : 1
Scan Type : Complete
Area Scan : 9x6x1 : Measurement x=10mm, y=10mm, z=4mm
Zoom Scan : 9x9x13 : Measurement x=4mm, y=4mm, z=2.5mm

Other Data

DUT Position : Touch
Separation : 0
Channel : Mid - 5825MHz

Power Drift-Start : 0.069 W/kg
Power Drift-Finish: 0.069 W/kg
Power Drift (%) : -0.002
Picture :



1 gram SAR value : 0.097 W/kg
10 gram SAR value : 0.085 W/kg
Area Scan Peak SAR : 0.099 W/kg
Zoom Scan Peak SAR : 0.150 W/kg

■ **5785 MHz, EUT Position: Laptop 836 GSM**

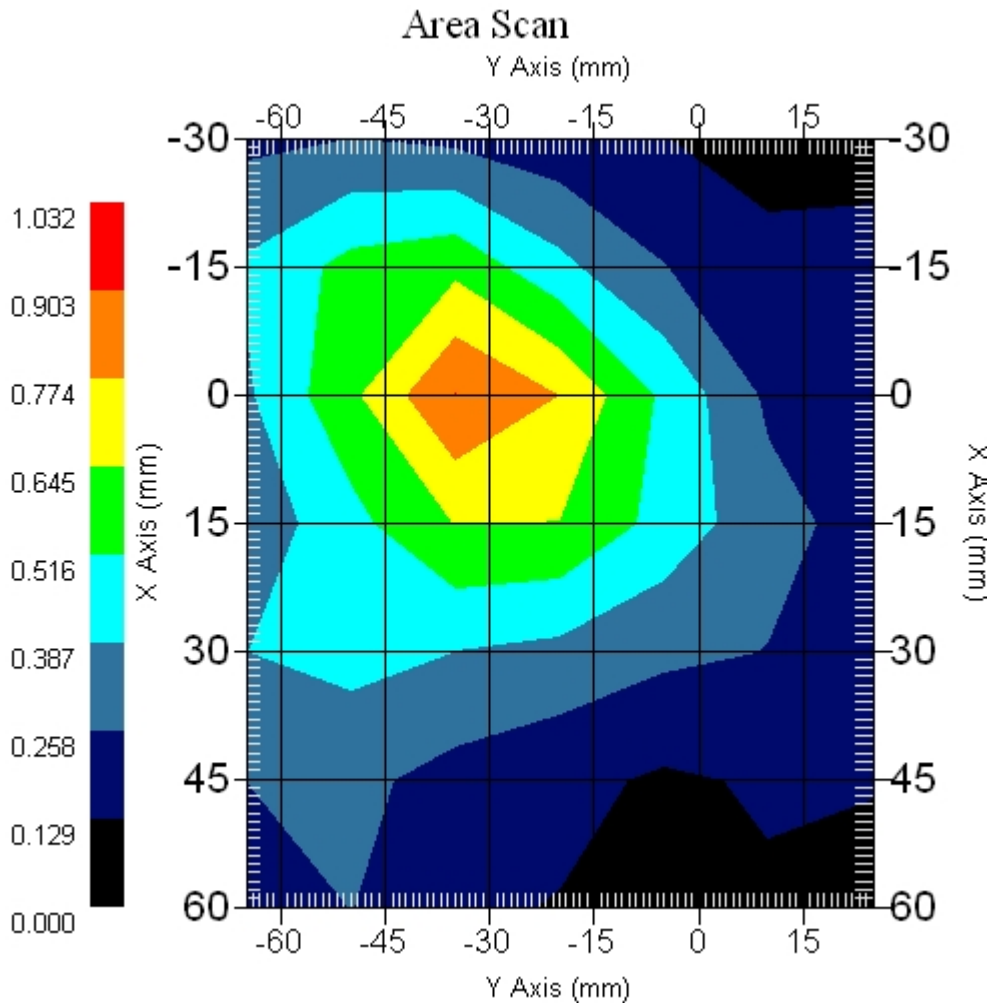
Measurement Data

Crest Factor : 1
Scan Type : Complete
Area Scan : 7x7x1 : Measurement x=15mm, y=15mm, z=4mm
Zoom Scan : 9x9x13 : Measurement x=4mm, y=4mm, z=2.5mm

Other Data

DUT Position : Touch
Separation : 0
Channel : Mid - 5785MHz

Power Drift-Start : 0.448 W/kg
Power Drift-Finish: 0.426 W/kg
Power Drift (%) : -4.910
Picture :



1 gram SAR value : 0.862 W/kg
10 gram SAR value : 0.656 W/kg
Area Scan Peak SAR : 0.905 W/kg
Zoom Scan Peak SAR : 1.271 W/kg

■ **5785 MHz, EUT Position: Laptop 836 GSM**

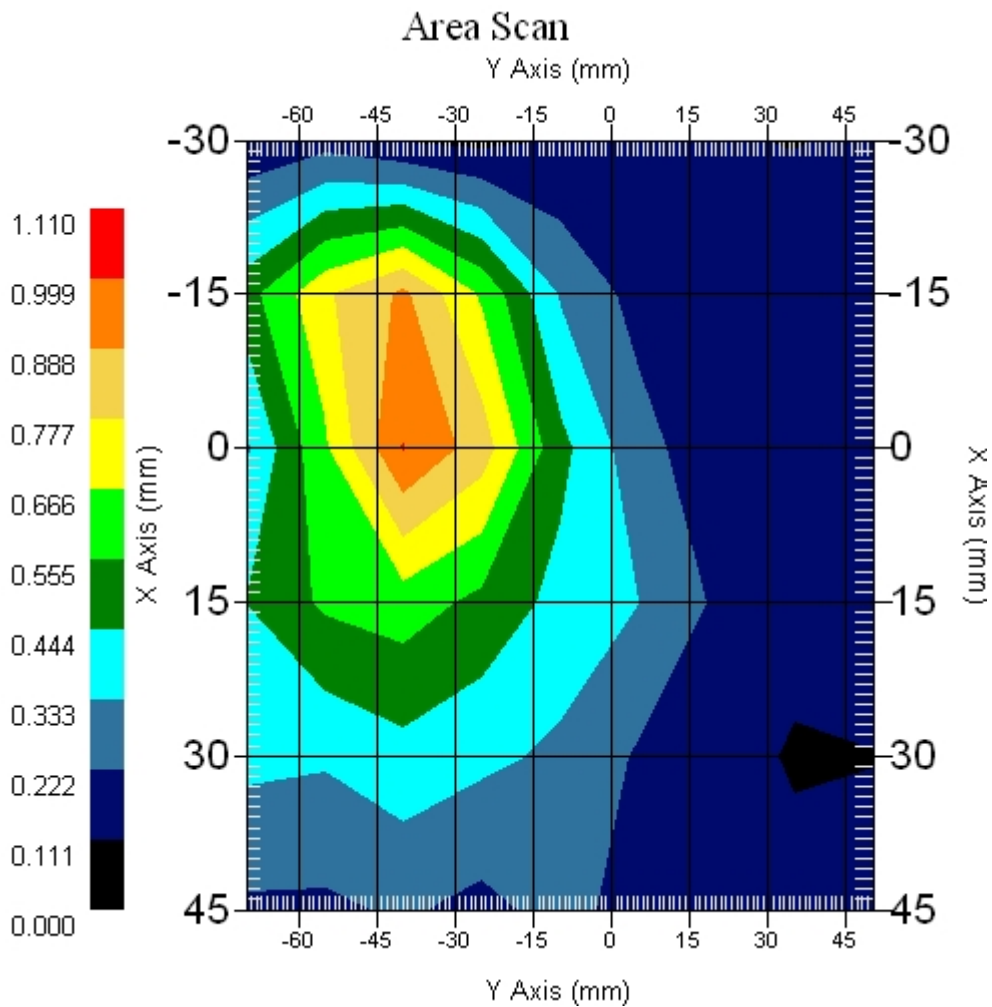
Measurement Data

Crest Factor : 1
 Scan Type : Complete
 Area Scan : 6x9x1 : Measurement x=15mm, y=15mm, z=4mm
 Zoom Scan : 9x9x13 : Measurement x=4mm, y=4mm, z=2.5mm

Other Data

DUT Position : Touch
 Separation : 0
 Channel : Mid - 5785MHz

Power Drift-Start : 0.312 W/kg
 Power Drift-Finish: 0.324 W/kg
 Power Drift (%) : 3.846
 Picture :



1 gram SAR value : 0.933 W/kg
 10 gram SAR value : 0.685 W/kg
 Area Scan Peak SAR : 1.002 W/kg
 Zoom Scan Peak SAR : 1.351 W/kg

■ . 5785 MHz, EUT Position: Tablet, PL 836 EGSM

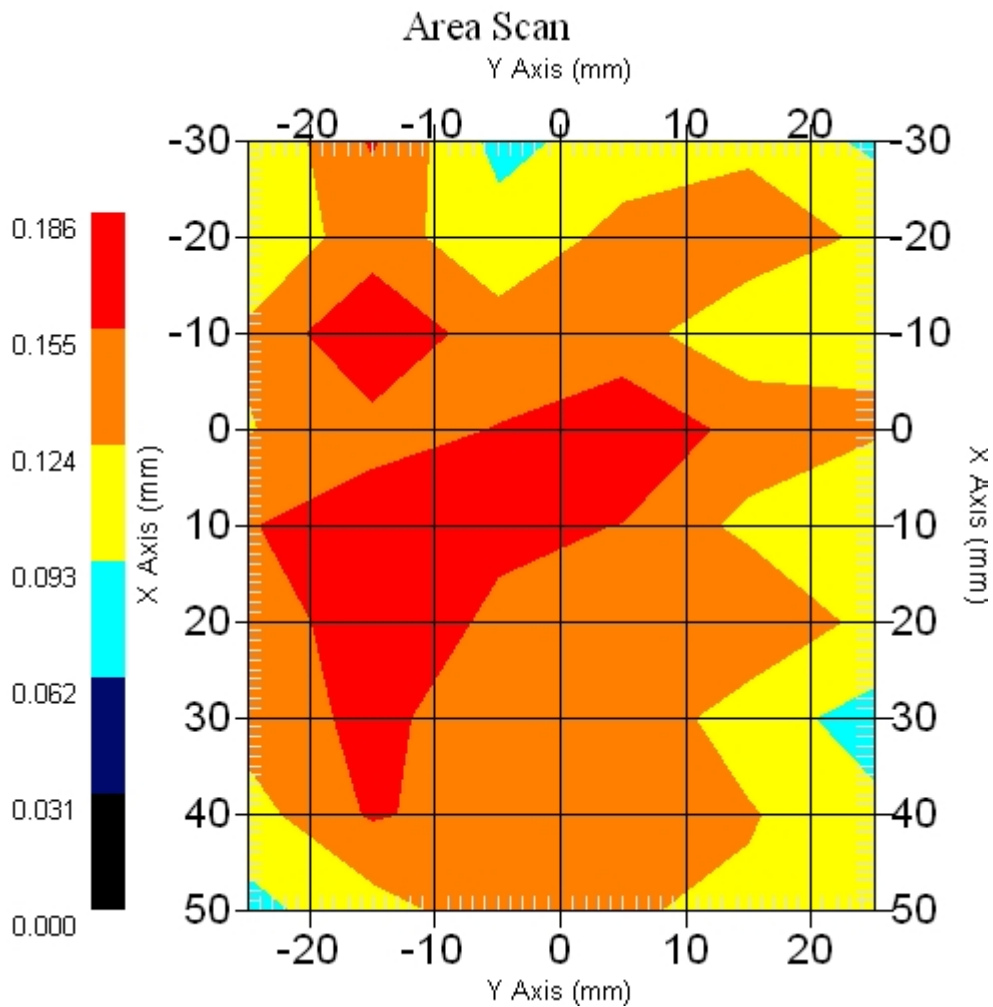
Measurement Data

Crest Factor : 1
Scan Type : Complete
Area Scan : 9x6x1 : Measurement x=10mm, y=10mm, z=4mm
Zoom Scan : 9x9x13 : Measurement x=4mm, y=4mm, z=2.5mm

Other Data

DUT Position : Touch
Separation : 0
Channel : Mid - 5785MHz

Power Drift-Start : 0.205 W/kg
Power Drift-Finish: 0.198 W/kg
Power Drift (%) : -3.414
Picture :



1 gram SAR value : 0.201 W/kg
10 gram SAR value : 0.185 W/kg
Area Scan Peak SAR : 0.185 W/kg
Zoom Scan Peak SAR : 0.230 W/kg

■ 5785 MHz, EUT Position: Tablet, PP 836 EGSM

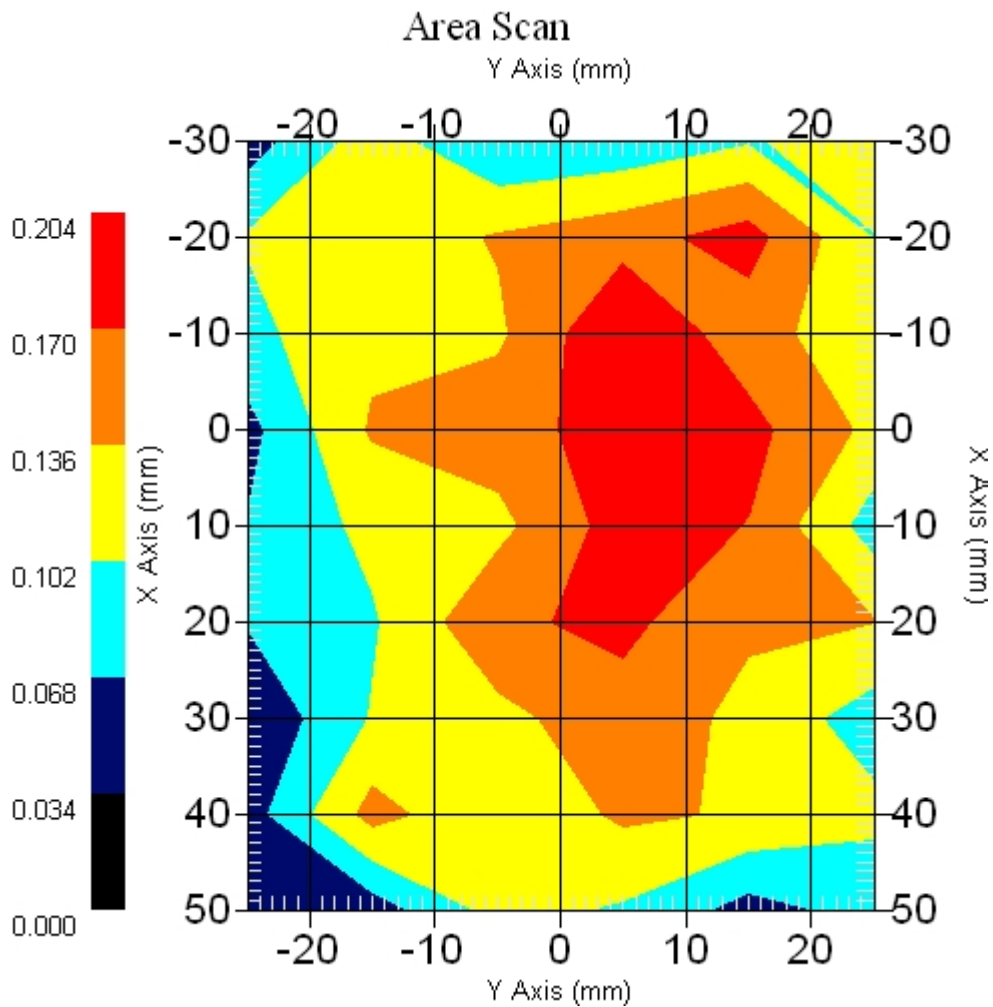
Measurement Data

Crest Factor : 1
Scan Type : Complete
Area Scan : 9x6x1 : Measurement x=10mm, y=10mm, z=4mm
Zoom Scan : 9x9x13 : Measurement x=4mm, y=4mm, z=2.5mm

Other Data

DUT Position : Touch
Separation : 0
Channel : Mid - 5785MHz

Power Drift-Start : 0.242 W/kg
Power Drift-Finish: 0.235 W/kg
Power Drift (%) : -2.892
Picture :



1 gram SAR value : 0.209 W/kg
10 gram SAR value : 0.148 W/kg
Area Scan Peak SAR : 0.203 W/kg
Zoom Scan Peak SAR : 0.350 W/kg

■ **5785 MHz, EUT Position: Tablet, SL 836 EGSM**

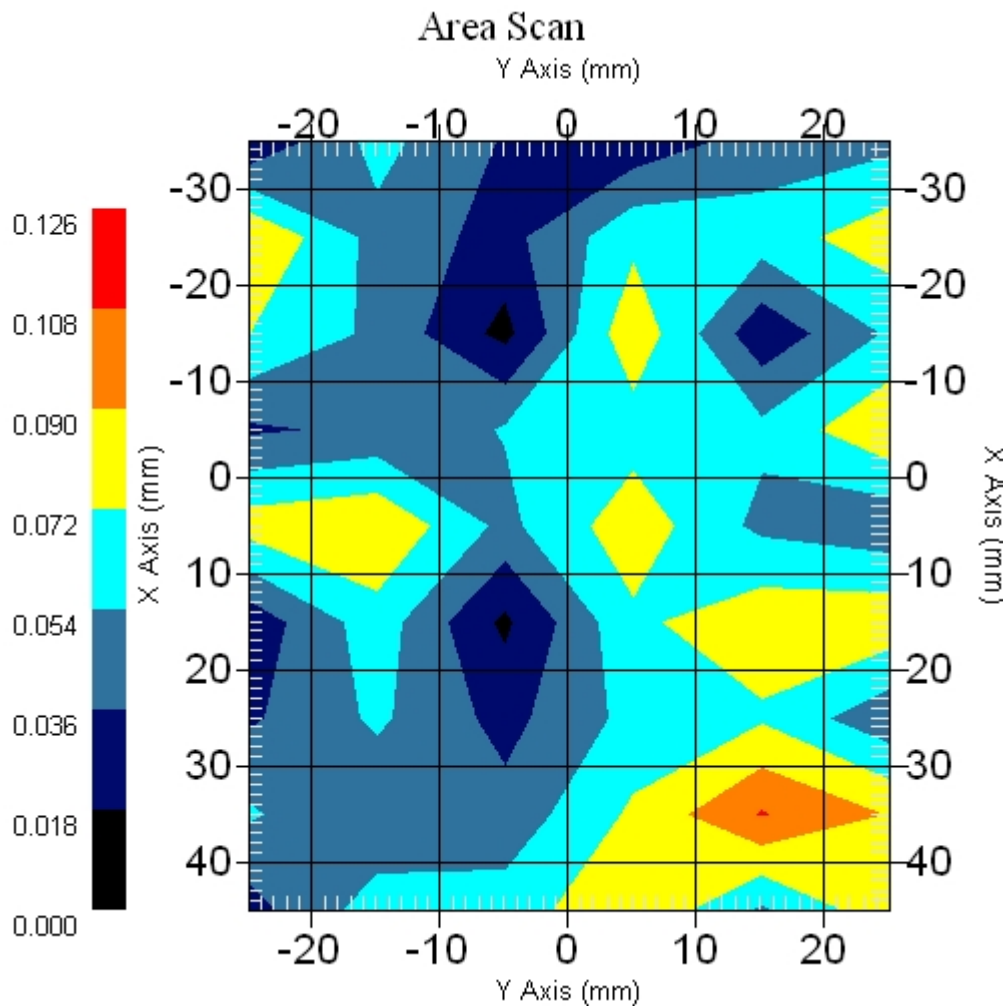
Measurement Data

Crest Factor : 1
Scan Type : Complete
Area Scan : 9x6x1 : Measurement x=10mm, y=10mm, z=4mm
Zoom Scan : 9x9x13 : Measurement x=4mm, y=4mm, z=2.5mm

Other Data

DUT Position : Touch
Separation : 0
Channel : Mid - 5785

Power Drift-Start : 0.079 W/kg
Power Drift-Finish: 0.076 W/kg
Power Drift (%) : -3.797
Picture :



1 gram SAR value : 0.134 W/kg
10 gram SAR value : 0.099 W/kg
Area Scan Peak SAR : 0.109 W/kg
Zoom Scan Peak SAR : 0.220 W/kg

■ **5745 MHz, EUT Position: Tablet, SP 836 EGSM**

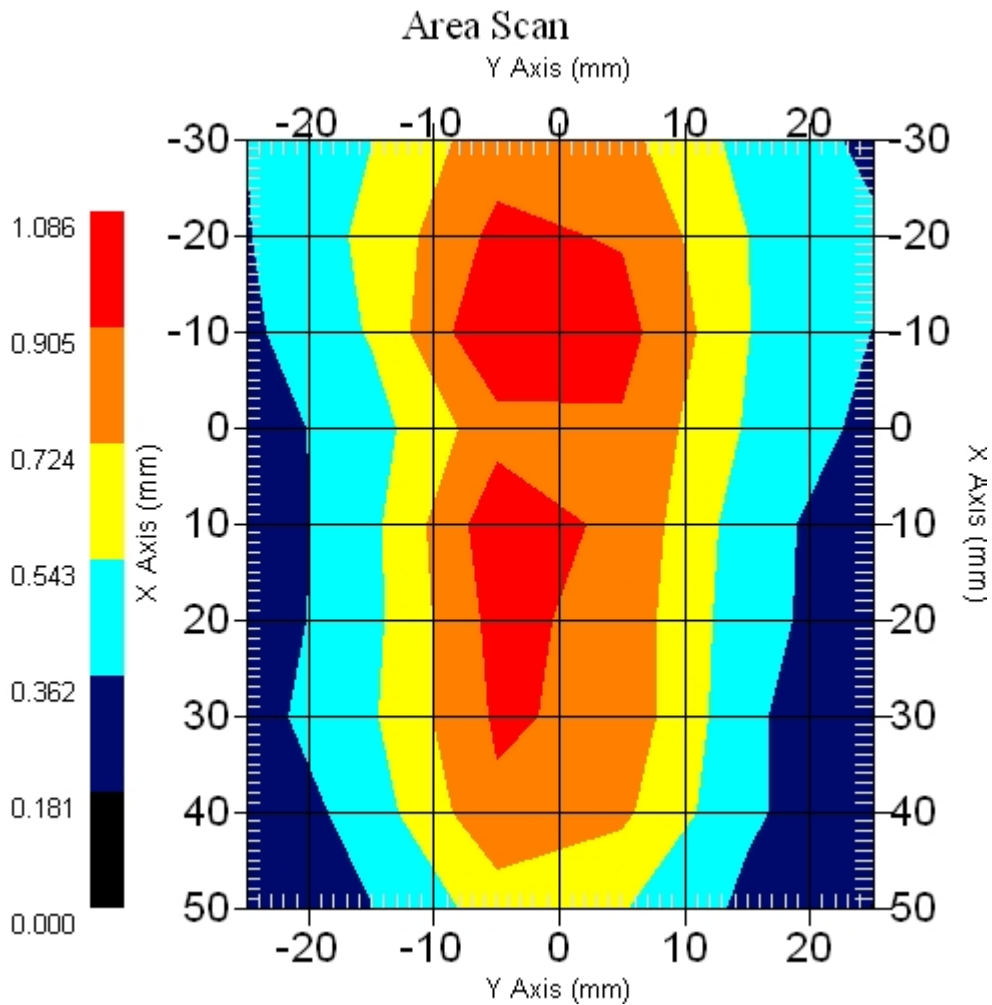
Measurement Data

Crest Factor : 1
Scan Type : Complete
Area Scan : 9x6x1 : Measurement x=10mm, y=10mm, z=4mm
Zoom Scan : 9x9x13 : Measurement x=4mm, y=4mm, z=2.5mm

Other Data

DUT Position : Touch
Separation : 0
Channel : Mid - 5745MHz

Power Drift-Start : 0.905 W/kg
Power Drift-Finish: 0.943 W/kg
Power Drift (%) : 4.175
Picture :



1 gram SAR value : 0.947 W/kg
10 gram SAR value : 0.704 W/kg
Area Scan Peak SAR : 1.086 W/kg
Zoom Scan Peak SAR : 1.411 W/kg

■ **5825 MHz, EUT Position: Tablet, SP 836 EGSM**

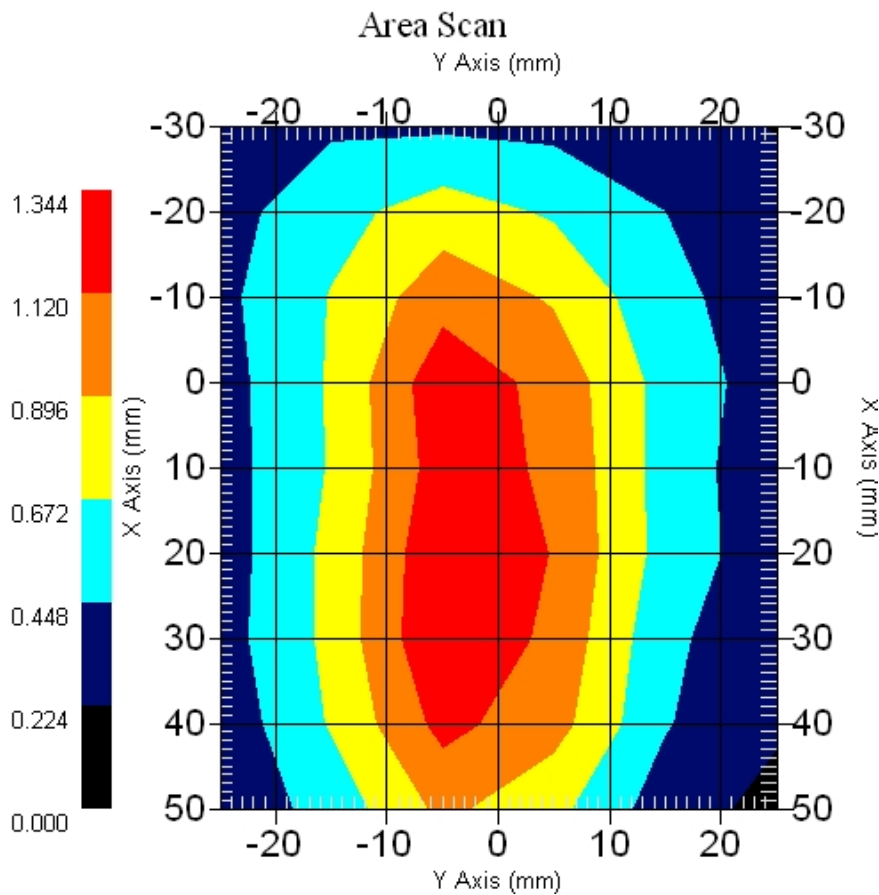
Measurement Data

Crest Factor : 1
Scan Type : Complete
Area Scan : 9x6x1 : Measurement x=10mm, y=10mm, z=4mm
Zoom Scan : 9x9x13 : Measurement x=4mm, y=4mm, z=2.5mm

Other Data

DUT Position : Touch
Separation : 0
Channel : Mid - 5825MHz

Power Drift-Start : 1.222 W/kg
Power Drift-Finish: 1.249 W/kg
Power Drift (%) : 2.164
Picture :



1 gram SAR value : 1.238 W/kg
10 gram SAR value : 0.926 W/kg
Area Scan Peak SAR : 1.343 W/kg

■ **Zoom Scan Peak SAR : 1.891 W/kg**

■ 5785 MHz, EUT Position: Tablet, SP 836 EGSM

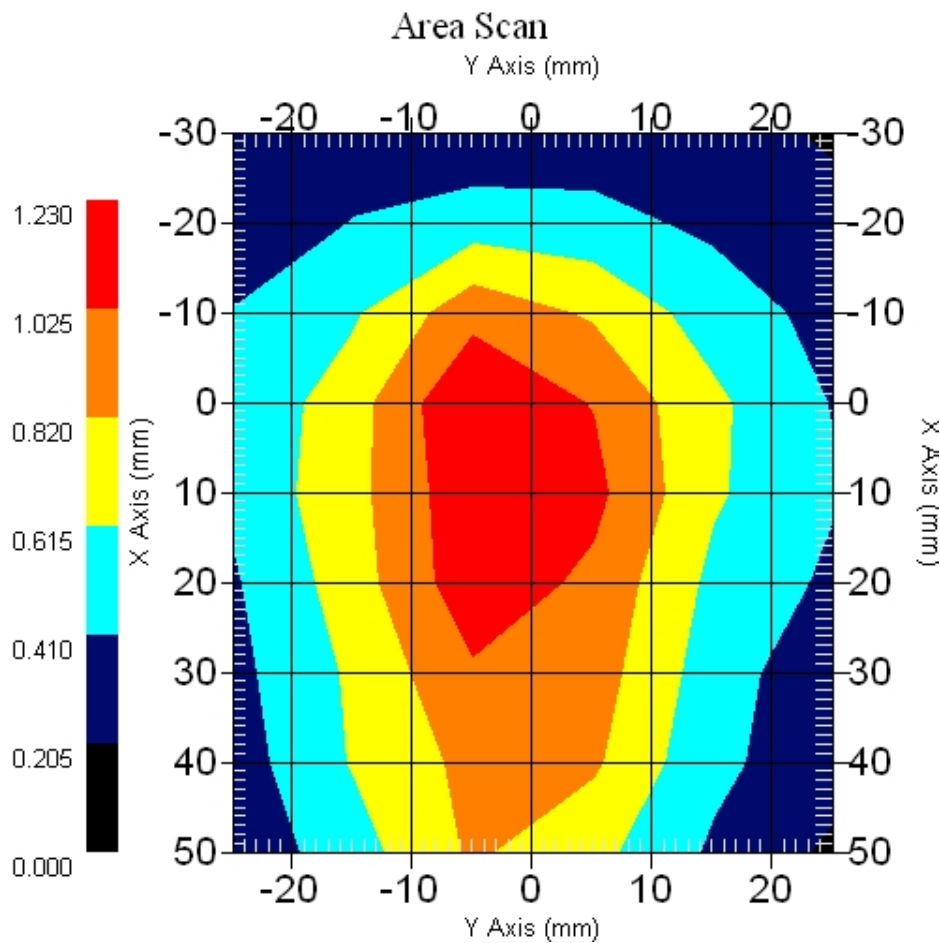
Measurement Data

Crest Factor : 1
Scan Type : Complete
Area Scan : 9x6x1 : Measurement x=10mm, y=10mm, z=4mm
Zoom Scan : 5x5x11 : Measurement x=8mm, y=8mm, z=3mm

Other Data

DUT Position : Touch
Separation : 0
Channel : Mid - 5825MHz

Power Drift-Start : 1.212 W/kg
Power Drift-Finish: 1.266 W/kg
Power Drift (%) : 4.455
Picture :



1 gram SAR value : 1.210 W/kg
10 gram SAR value : 0.828 W/kg
Area Scan Peak SAR : 1.228 W/kg
Zoom Scan Peak SAR : 1.971 W/kg

■ **5785 MHz, EUT Position: Tablet, SP 1880 GSM**

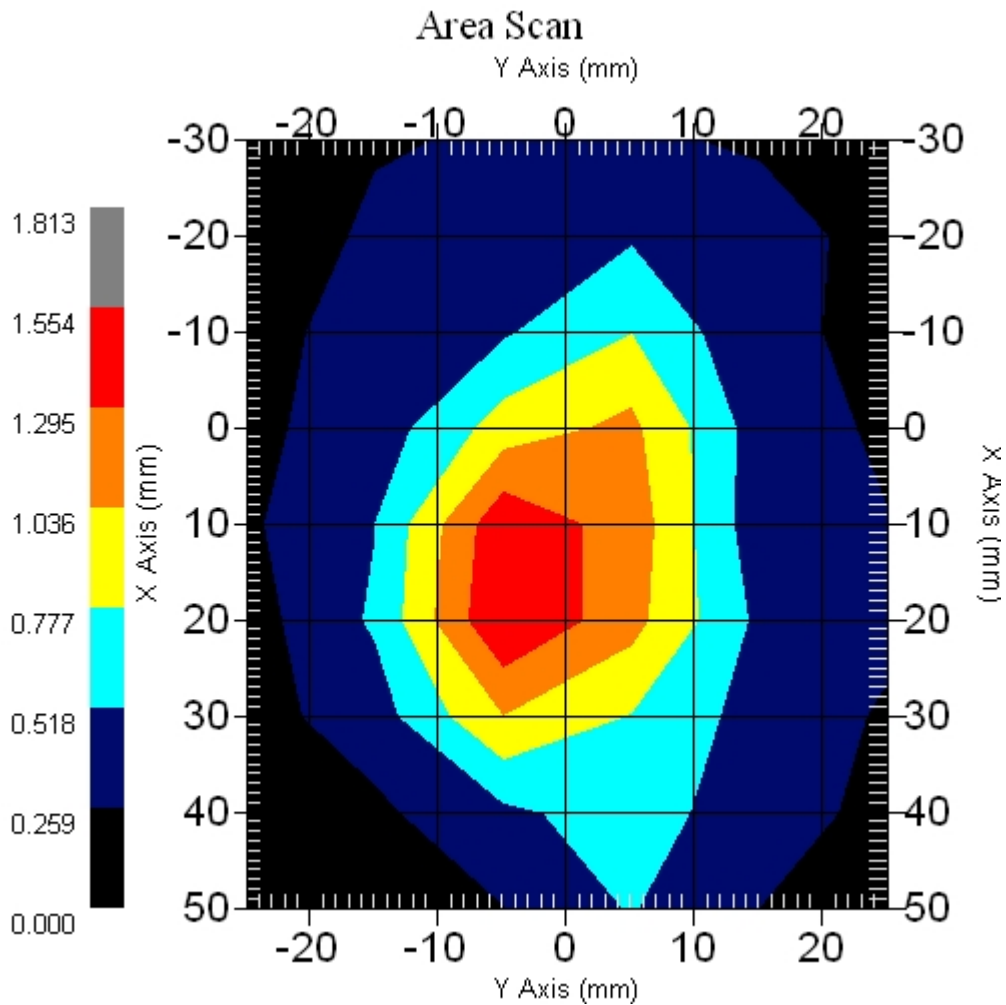
Measurement Data

Crest Factor : 1
Scan Type : Complete
Area Scan : 9x6x1 : Measurement x=10mm, y=10mm, z=4mm
Zoom Scan : 9x9x13 : Measurement x=4mm, y=4mm, z=2.5mm

Other Data

DUT Position : Touch
Separation : 0
Channel : Mid - 5785MHz

Power Drift-Start : 1.196 W/kg
Power Drift-Finish: 1.254 W/kg
Power Drift (%) : 4.849
Picture :



1 gram SAR value : 1.326 W/kg
10 gram SAR value : 0.721 W/kg
Area Scan Peak SAR : 1.554 W/kg
Zoom Scan Peak SAR : 2.462 W/kg

■ 5785 MHz, EUT Position: Tablet, SP 1880 EGSM

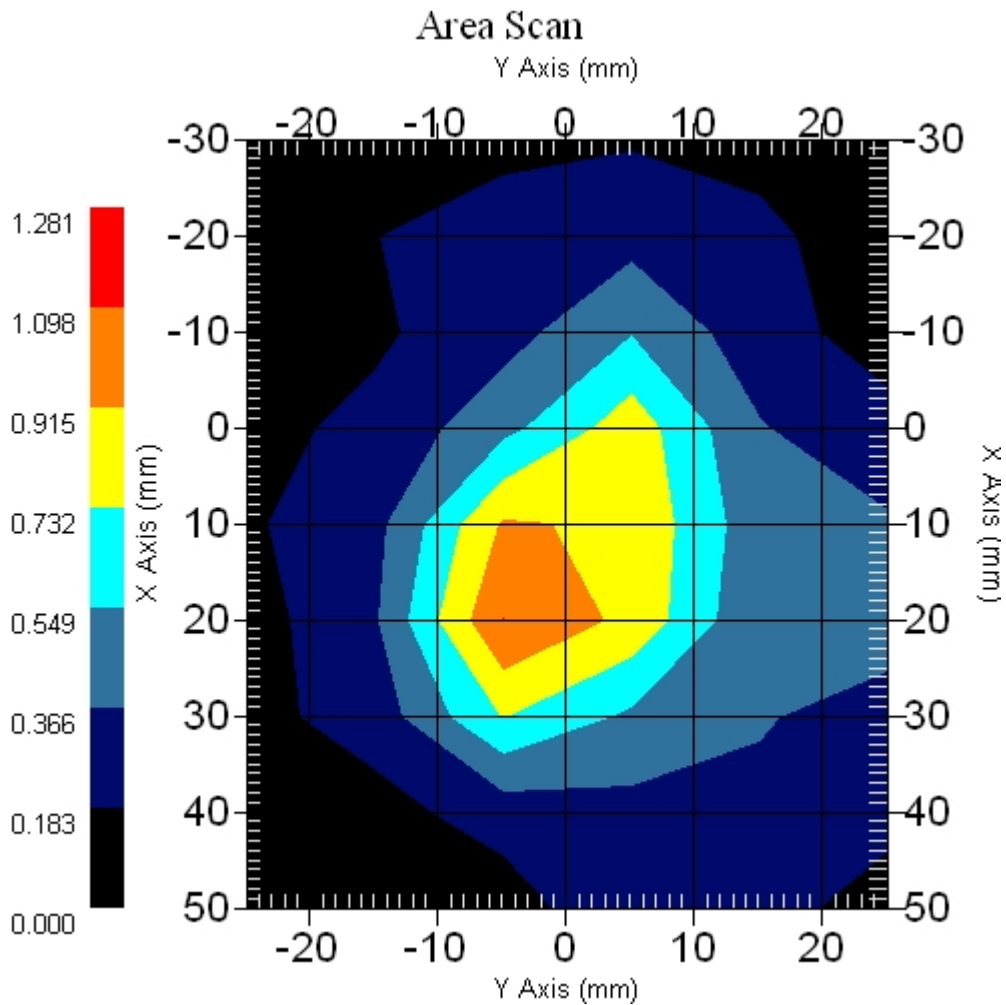
Measurement Data

Crest Factor : 1
Scan Type : Complete
Area Scan : 9x6x1 : Measurement x=10mm, y=10mm, z=4mm
Zoom Scan : 9x9x13 : Measurement x=4mm, y=4mm, z=2.5mm

Other Data

DUT Position : Touch
Separation : 0
Channel : Mid - 5785MHz

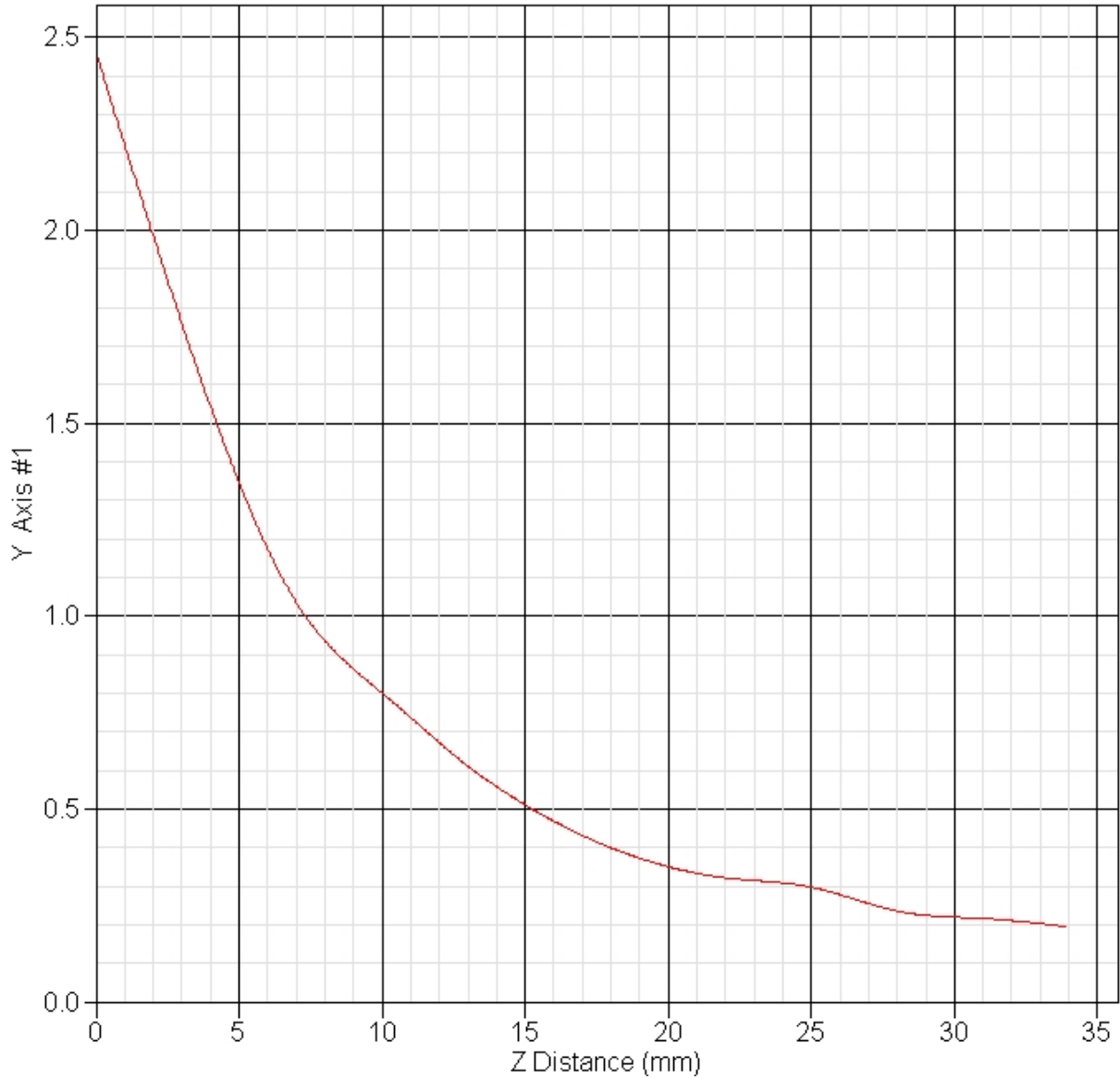
Power Drift-Start : 0.866 W/kg
Power Drift-Finish: 0.886 W/kg
Power Drift (%) : 2.269
Picture :



1 gram SAR value : 0.925 W/kg
10 gram SAR value : 0.497 W/kg
Area Scan Peak SAR : 1.099 W/kg
Zoom Scan Peak SAR : 1.851 W/kg

■ Z Axis 802.11a 5785 MHz, Position: Tablet SP, 836 GSM

SAR-Z Axis
at Hotspot x:12.30 y:2.90



14.3 802.11a (5725 ~ 5850MHz) + WWAN Tosa (EV-DO) : FCCID N7N-MC5720 + Bluetooth

■ 5785 MHz, EUT Position: Laptop 836 EV-DO

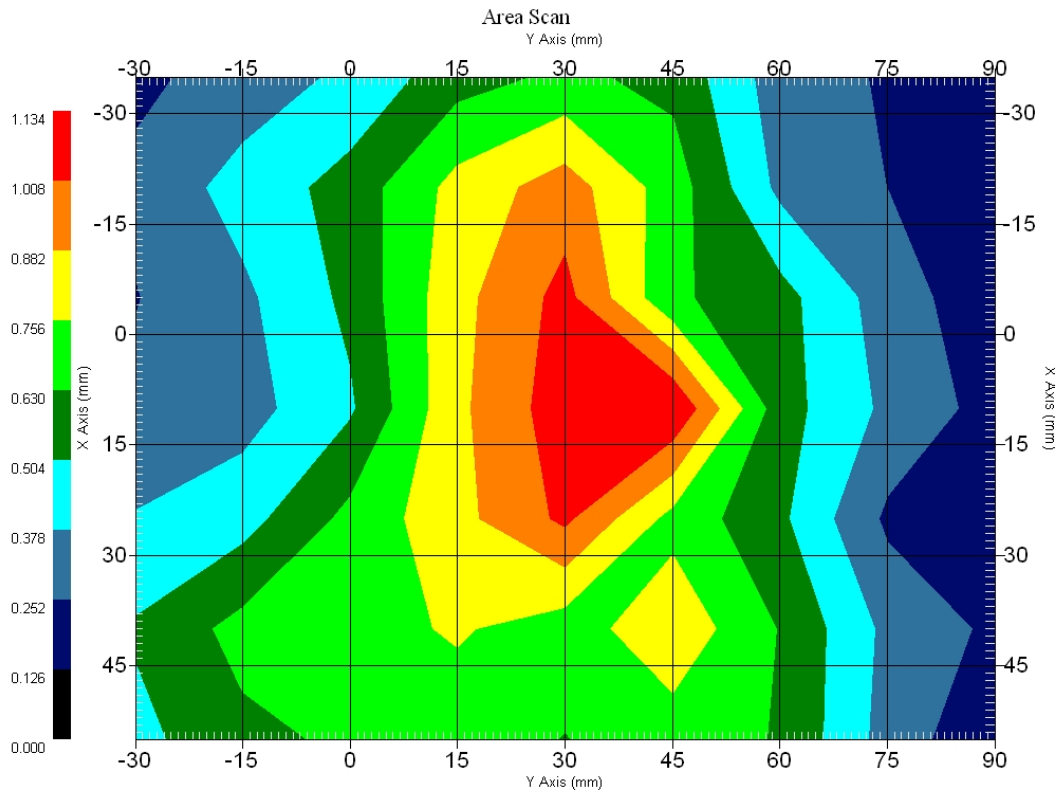
Measurement Data

Crest Factor : 1
Scan Type : Complete
Area Scan : 7x9x1 : Measurement x=15mm, y=15mm, z=4mm
Zoom Scan : 9x9x13 : Measurement x=4mm, y=4mm, z=2.5mm

Other Data

DUT Position : Touch
Separation : 0
Channel : Mid - 526MHz

Power Drift-Start : 0.235 W/kg
Power Drift-Finish: 0.235 W/kg
Power Drift (%) : 0.021
Picture :



1 gram SAR value : 1.080 W/kg
10 gram SAR value : 0.937 W/kg
Area Scan Peak SAR : 1.333 W/kg
Zoom Scan Peak SAR : 1.641 W/kg

■ **5785 MHz Only, EUT Position: Laptop**

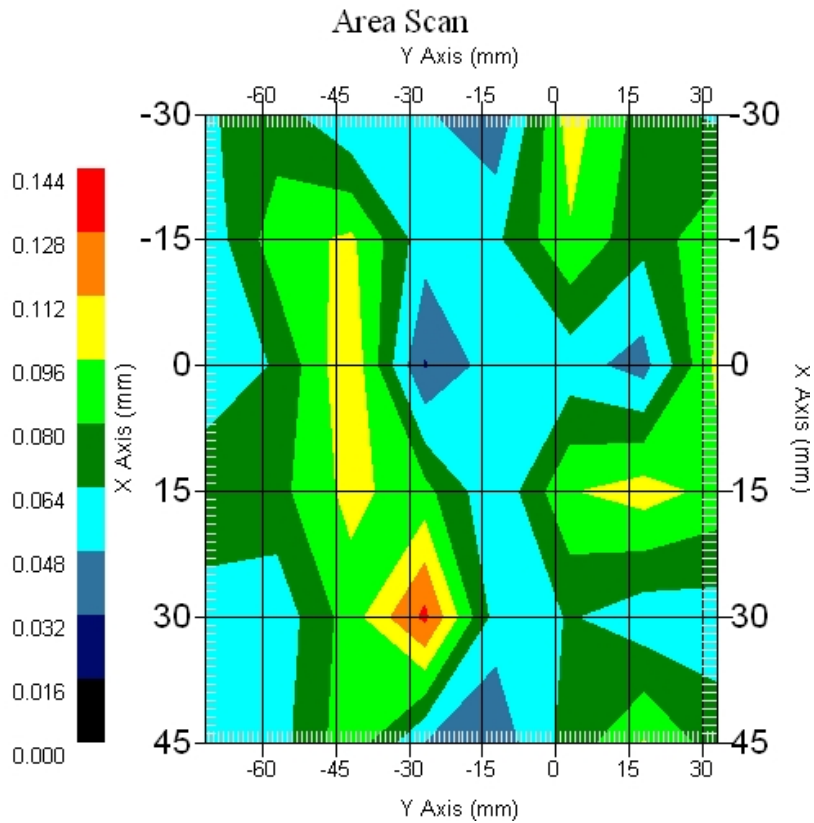
Measurement Data

Crest Factor : 1
Scan Type : Complete
Set-up Date : 25-Aug-2006
Set-up Time : 9:48:07 AM
Area Scan : 6x8x1 : Measurement x=15mm, y=15mm, z=4mm
Zoom Scan : 9x9x13 : Measurement x=4mm, y=4mm, z=2.5mm

Other Data

DUT Position : Touch
Separation : 0
Channel : Mid - 5785MHz

Power Drift-Start : 0.056 W/kg
Power Drift-Finish: 0.057 W/kg
Power Drift (%) : 1.785



1 gram SAR value : 0.099 W/kg
10 gram SAR value : 0.078 W/kg
Area Scan Peak SAR : 0.132 W/kg
Zoom Scan Peak SAR : 0.220 W/kg

■ 836 MHz, EUT Position: EV-DO only

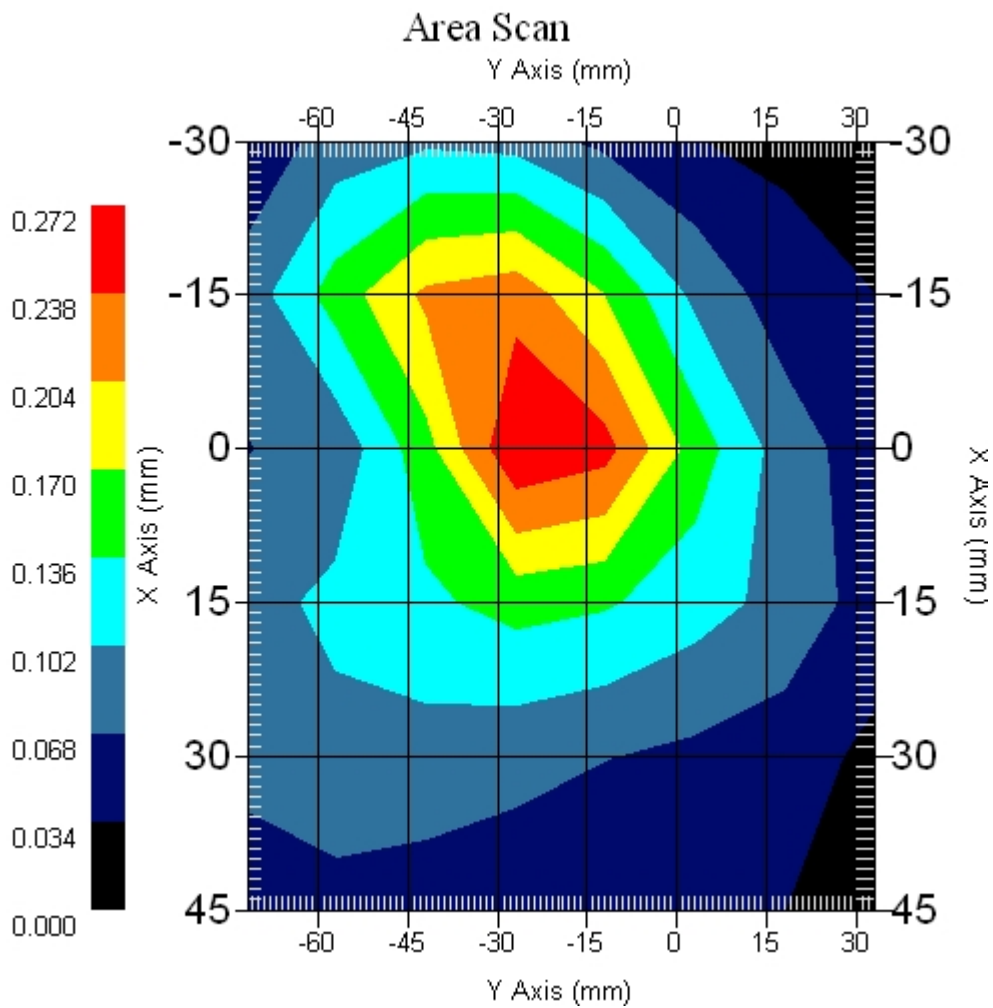
Measurement Data

Crest Factor : 1
Scan Type : Complete
Tissue Temp. : 21.20 °C
Ambient Temp. : 21.50 °C
Area Scan : 6x8x1 : Measurement x=15mm, y=15mm, z=4mm
Zoom Scan : 5x5x8 : Measurement x=8mm, y=8mm, z=4mm

Other Data

DUT Position : Touch
Separation : 0
Channel : Mid - 836MHz

Power Drift-Start : 0.172 W/kg
Power Drift-Finish: 0.176 W/kg
Power Drift (%) : 2.325



1 gram SAR value : 0.260 W/kg
10 gram SAR value : 0.165 W/kg
Area Scan Peak SAR : 0.270 W/kg
Zoom Scan Peak SAR : 0.390 W/kg

■ **5785 MHz, EUT Position: Tablet, PL 836 EV-DO**

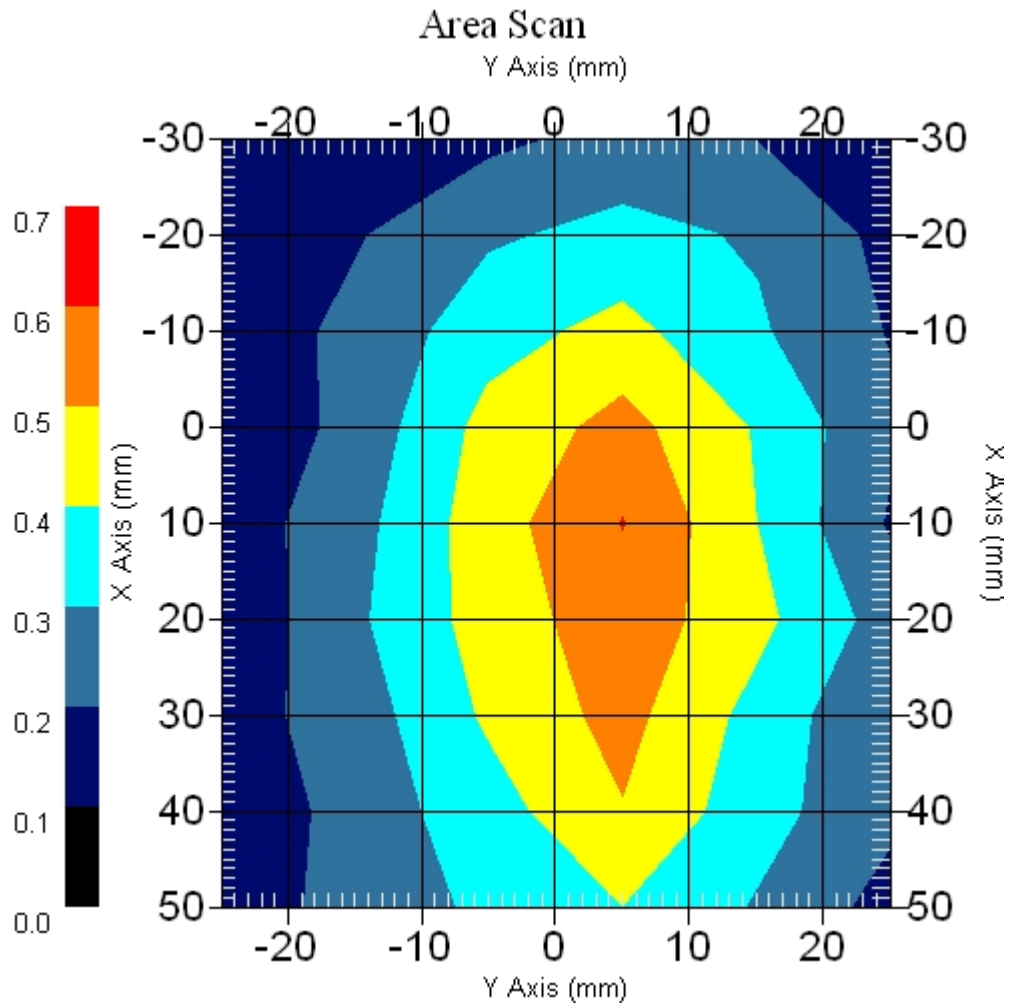
Measurement Data

Crest Factor : 1
Scan Type : Complete
Area Scan : 9x6x1 : Measurement x=10mm, y=10mm, z=4mm
Zoom Scan : 5x5x11 : Measurement x=8mm, y=8mm, z=3mm

Other Data

DUT Position : Touch
Separation : 0
Channel : Mid - 5785MHz

Power Drift-Start : 0.492 W/kg
Power Drift-Finish: 0.507 W/kg
Power Drift (%) : 3.049



1 gram SAR value : 0.598 W/kg
10 gram SAR value : 0.425 W/kg
Area Scan Peak SAR : 0.603 W/kg
Zoom Scan Peak SAR : 0.990 W/kg

■ 5785 MHz, EUT Position: Tablet, PP 836 EV-DO

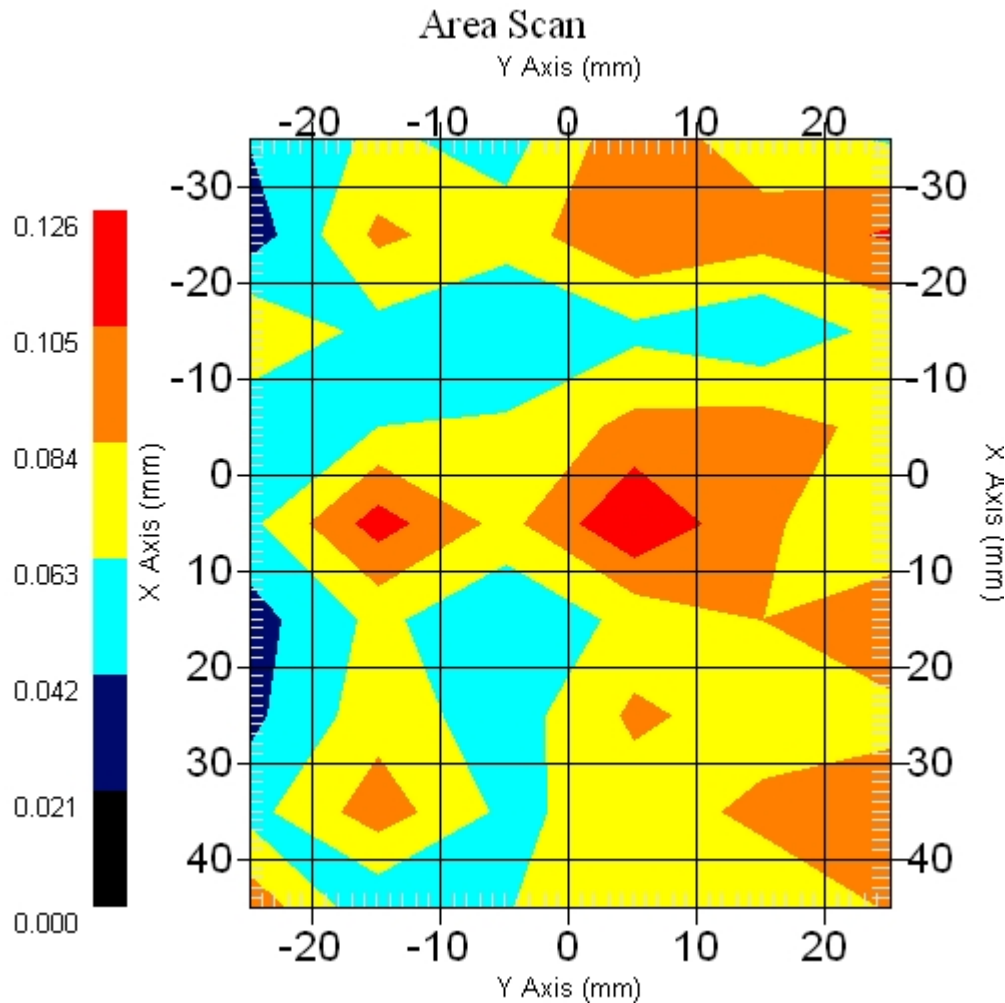
Measurement Data

Crest Factor : 1
Scan Type : Complete
Area Scan : 9x6x1 : Measurement x=10mm, y=10mm, z=4mm
Zoom Scan : 9x9x13 : Measurement x=4mm, y=4mm, z=2.5mm

Other Data

DUT Position : Touch
Separation : 0
Channel : Mid - 5785

Power Drift-Start : 0.128 W/kg
Power Drift-Finish: 0.132 W/kg
Power Drift (%) : 3.125



1 gram SAR value : 0.107 W/kg
10 gram SAR value : 0.075 W/kg
Area Scan Peak SAR : 0.125 W/kg
Zoom Scan Peak SAR : 0.210 W/kg

■ 5785 MHz, EUT Position: Tablet, SL 836 EV-DO

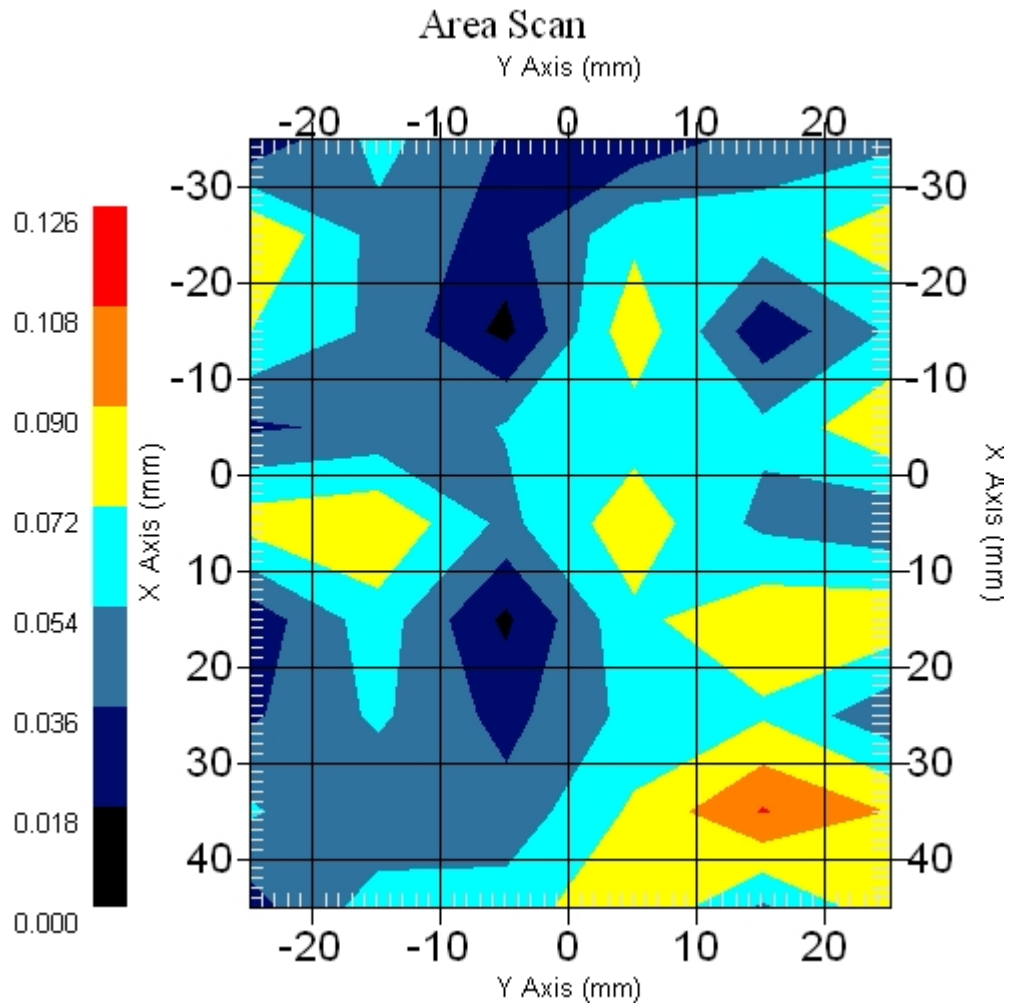
Measurement Data

Crest Factor : 1
Scan Type : Complete
Area Scan : 9x6x1 : Measurement x=10mm, y=10mm, z=4mm
Zoom Scan : 9x9x13 : Measurement x=4mm, y=4mm, z=2.5mm

Other Data

DUT Position : Touch
Separation : 0
Channel : Mid - 5785

Power Drift-Start : 0.079 W/kg
Power Drift-Finish: 0.076 W/kg
Power Drift (%) : -3.797



1 gram SAR value : 0.134 W/kg
10 gram SAR value : 0.099 W/kg
Area Scan Peak SAR : 0.109 W/kg
Zoom Scan Peak SAR : 0.220 W/kg

■ 5785 MHz Only, EUT Position: Tablet, SP

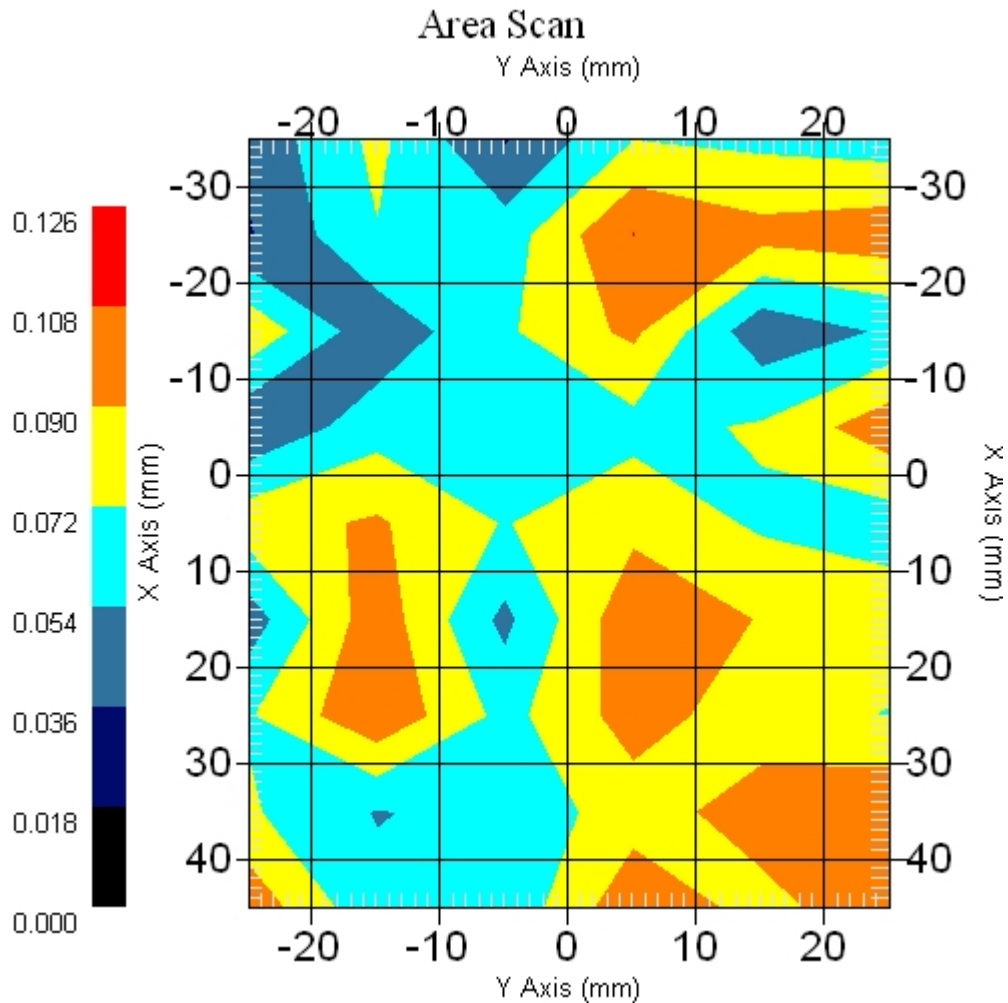
Measurement Data

Crest Factor : 1
Scan Type : Complete
Area Scan : 9x6x1 : Measurement x=10mm, y=10mm, z=4mm
Zoom Scan : 9x9x13 : Measurement x=4mm, y=4mm, z=2.5mm

Other Data

DUT Position : Touch
Separation : 0
Channel : Mid - 5785MHz

Power Drift-Start : 0.091 W/kg
Power Drift-Finish: 0.095 W/kg
Power Drift (%) : 4.395

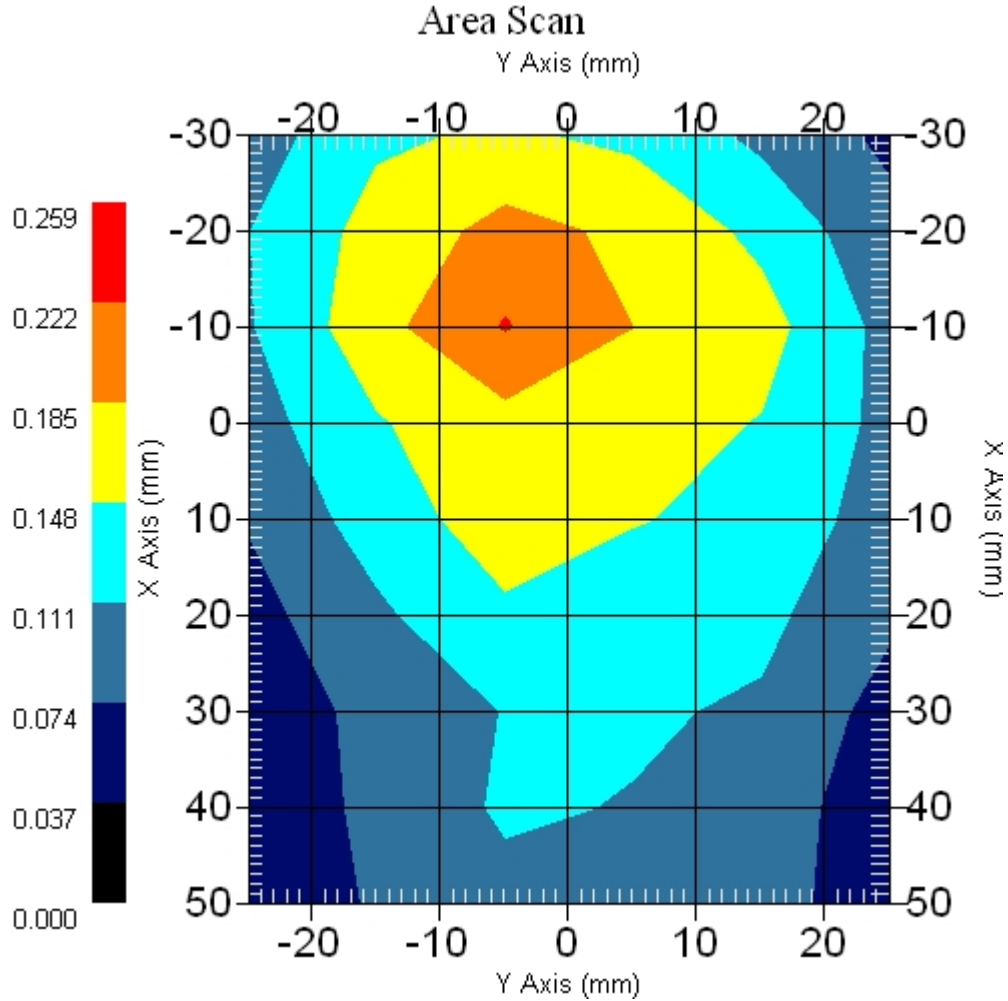


1 gram SAR value : 0.104 W/kg
10 gram SAR value : 0.089 W/kg
Area Scan Peak SAR : 0.108 W/kg
Zoom Scan Peak SAR : 0.110 W/kg

■ EUT Position: Tablet, SP , 836 EV-DO Only

Measurement Data

Crest Factor : 1
Scan Type : Complete
Area Scan : 9x6x1 : Measurement x=10mm, y=10mm, z=4mm
Zoom Scan : 5x5x8 : Measurement x=8mm, y=8mm, z=4mm
DUT Position : Touch
Separation : 0
Channel : Mid - 800MHz
Power Drift-Start : 0.175 W/kg
Power Drift-Finish: 0.173 W/kg
Power Drift (%) : -0.939



1 gram SAR value : 0.203 W/kg
10 gram SAR value : 0.130 W/kg
Area Scan Peak SAR : 0.225 W/kg
Zoom Scan Peak SAR : 0.350 W/kg