

■ **5785 MHz, EUT Position: Tablet, SP, 836 EGSM**

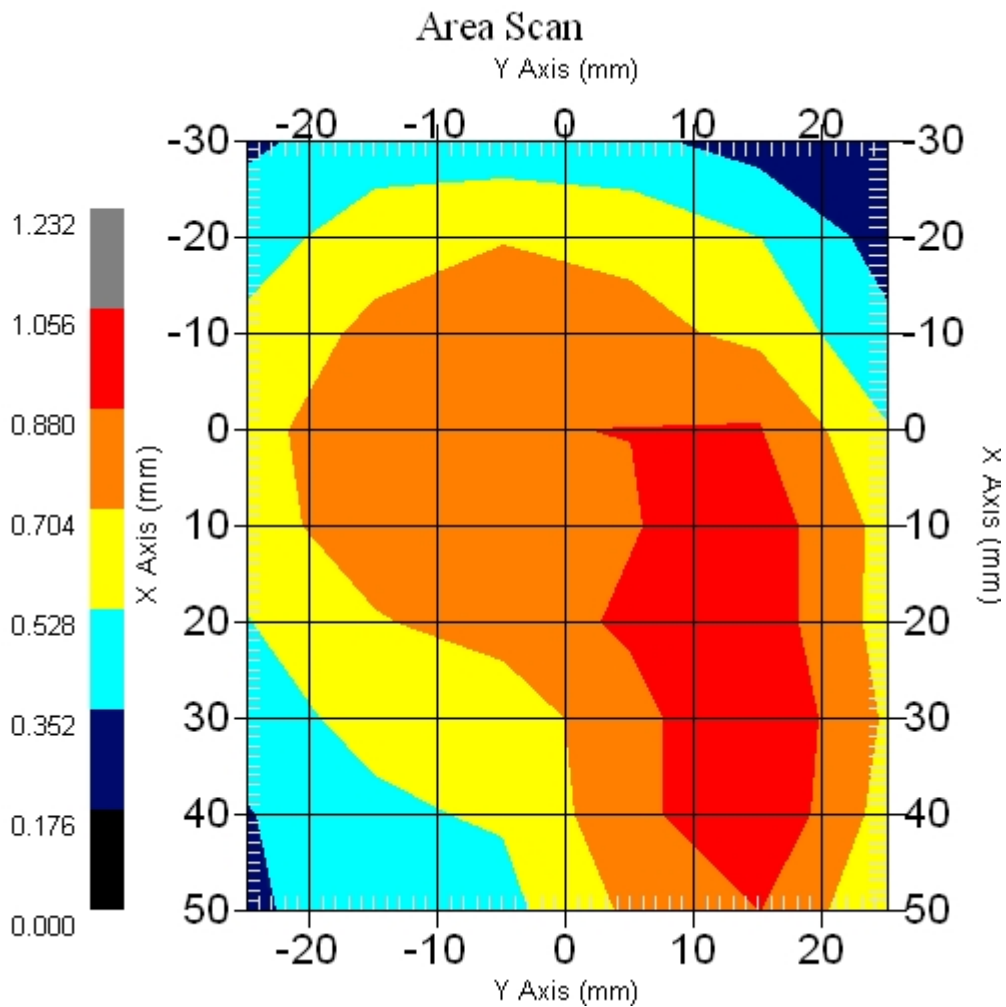
Measurement Data

Crest Factor : 1  
Scan Type : Complete  
Area Scan : 9x6x1 : Measurement x=10mm, y=10mm, z=4mm  
Zoom Scan : 9x9x13 : Measurement x=4mm, y=4mm, z=2.5mm

Other Data

DUT Position : Touch  
Separation : 0  
Channel : Mid - 5785

Power Drift-Start : 0.927 W/kg  
Power Drift-Finish: 0.927 W/kg  
Power Drift (%) : 0.002  
Picture :



1 gram SAR value : 1.006 W/kg  
10 gram SAR value : 0.736 W/kg  
Area Scan Peak SAR : 1.056 W/kg  
Zoom Scan Peak SAR : 1.451 W/kg

■ 5785 MHz, EUT Position: Laptop, 836 UMTS

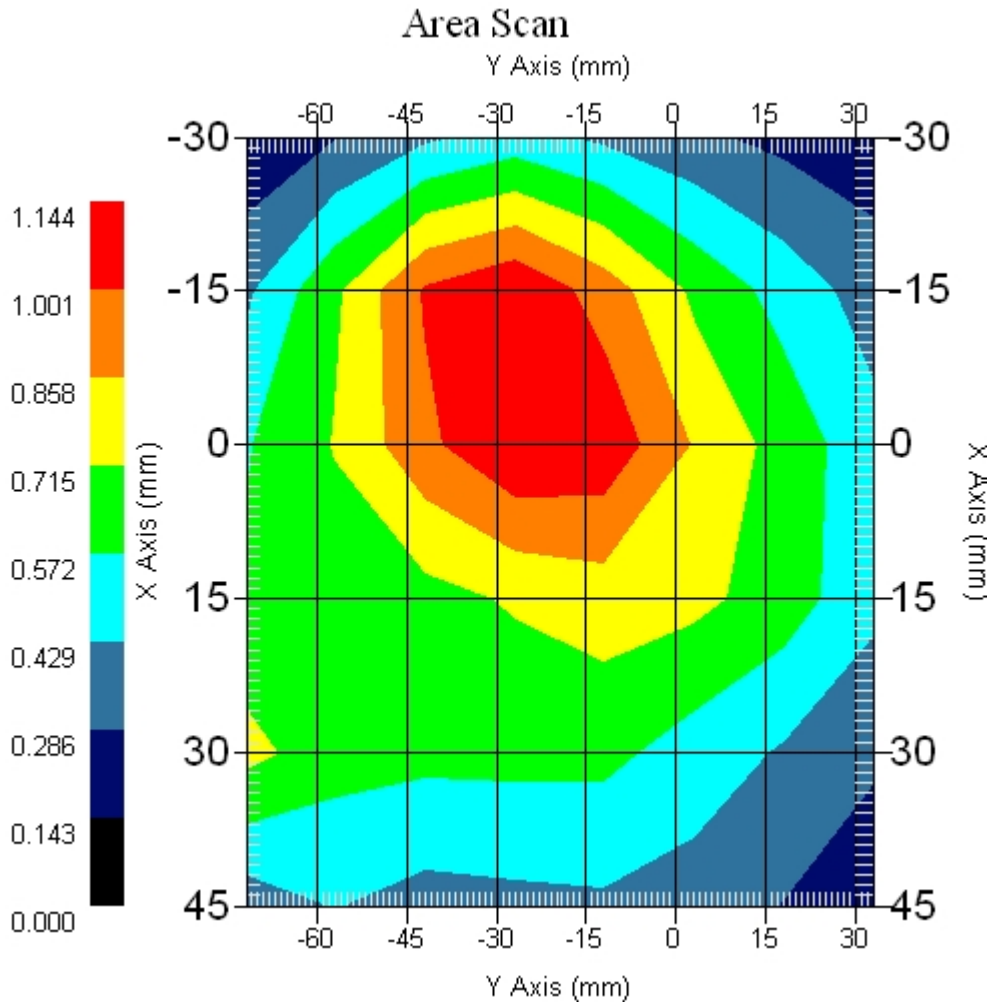
Measurement Data

Crest Factor : 1  
Scan Type : Complete  
Area Scan : 6x8x1 : Measurement x=15mm, y=15mm, z=4mm  
Zoom Scan : 9x9x13 : Measurement x=4mm, y=4mm, z=2.5mm

Other Data

DUT Position : Touch  
Separation : 0  
Channel : Mid - 5785MHz

Power Drift-Start : 0.923 W/kg  
Power Drift-Finish: 0.925 W/kg  
Power Drift (%) : 2.166  
Picture :



1 gram SAR value : 1.243 W/kg  
10 gram SAR value : 0.902 W/kg  
Area Scan Peak SAR : 1.142 W/kg  
Zoom Scan Peak SAR : 1.861 W/kg

■ 5785 MHz, EUT Position: Laptop, 836 UMTS

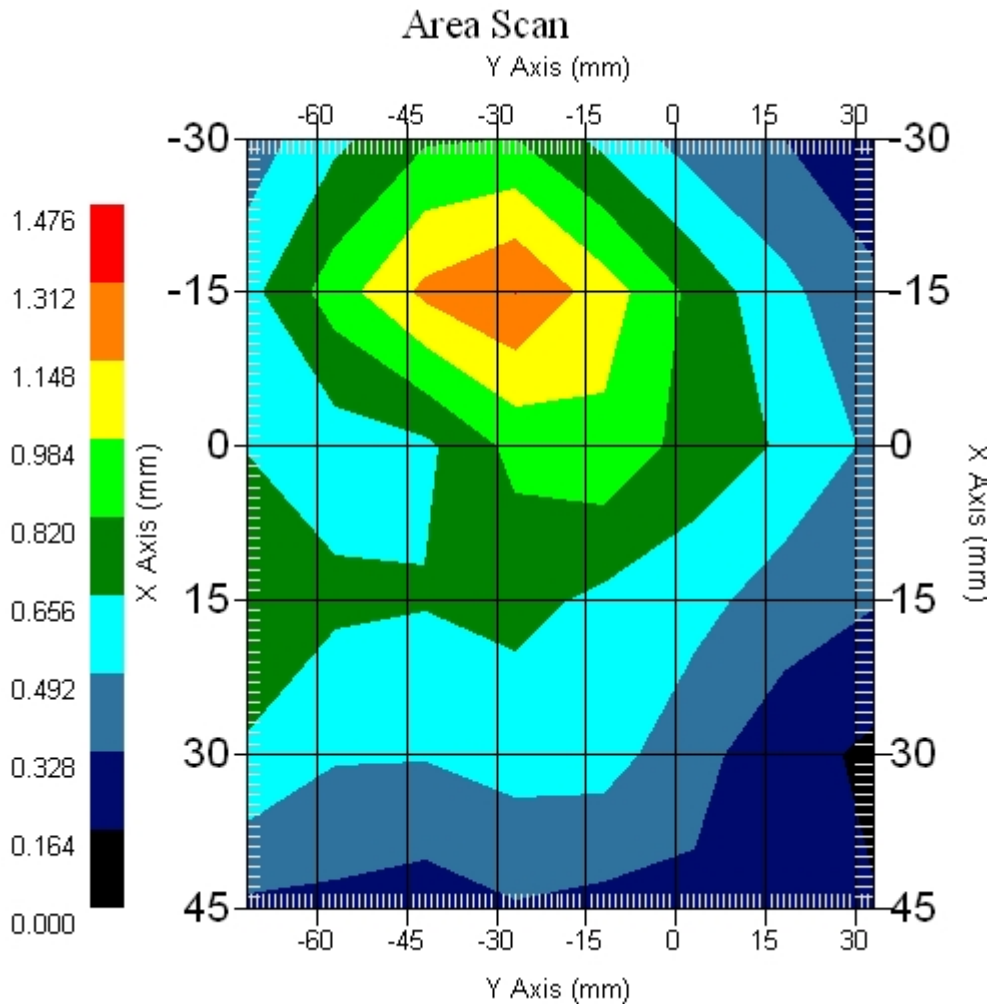
Measurement Data

Crest Factor : 1  
Scan Type : Complete  
Area Scan : 6x8x1 : Measurement x=15mm, y=15mm, z=4mm  
Zoom Scan : 9x9x13 : Measurement x=4mm, y=4mm, z=2.5mm

Other Data

DUT Position : Touch  
Separation : 0  
Channel : Mid - 5785MHz

Power Drift-Start : 0.803 W/kg  
Power Drift-Finish: 0.788 W/kg  
Power Drift (%) : -1.896  
Picture :



1 gram SAR value : 1.216 W/kg  
10 gram SAR value : 0.865 W/kg  
Area Scan Peak SAR : 1.314 W/kg  
Zoom Scan Peak SAR : 1.751 W/kg

■ **5785 MHz, EUT Position: Tablet, PL, 836 UMTS**

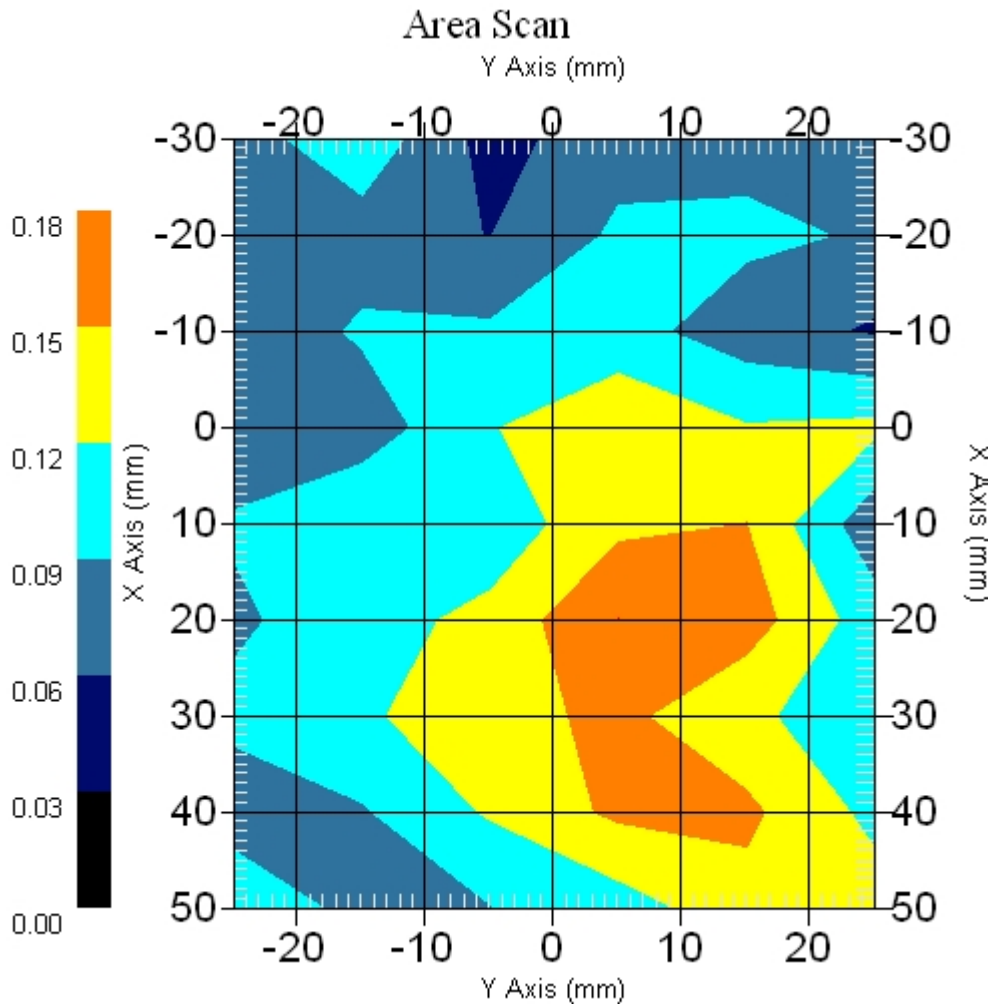
Measurement Data

Crest Factor : 1  
Scan Type : Complete  
Area Scan : 9x6x1 : Measurement x=10mm, y=10mm, z=4mm  
Zoom Scan : 9x9x13 : Measurement x=4mm, y=4mm, z=2.5mm

Other Data

DUT Position : Touch  
Separation : 0  
Channel : Mid - 5785MHz

Power Drift-Start : 0.167 W/kg  
Power Drift-Finish: 0.161 W/kg  
Power Drift (%) : -3.392  
Picture :



1 gram SAR value : 0.178 W/kg  
10 gram SAR value : 0.147 W/kg  
Area Scan Peak SAR : 0.180 W/kg  
Zoom Scan Peak SAR : 0.290 W/kg

■ **5785 MHz, EUT Position: Tablet, PP, 836 UMTS**

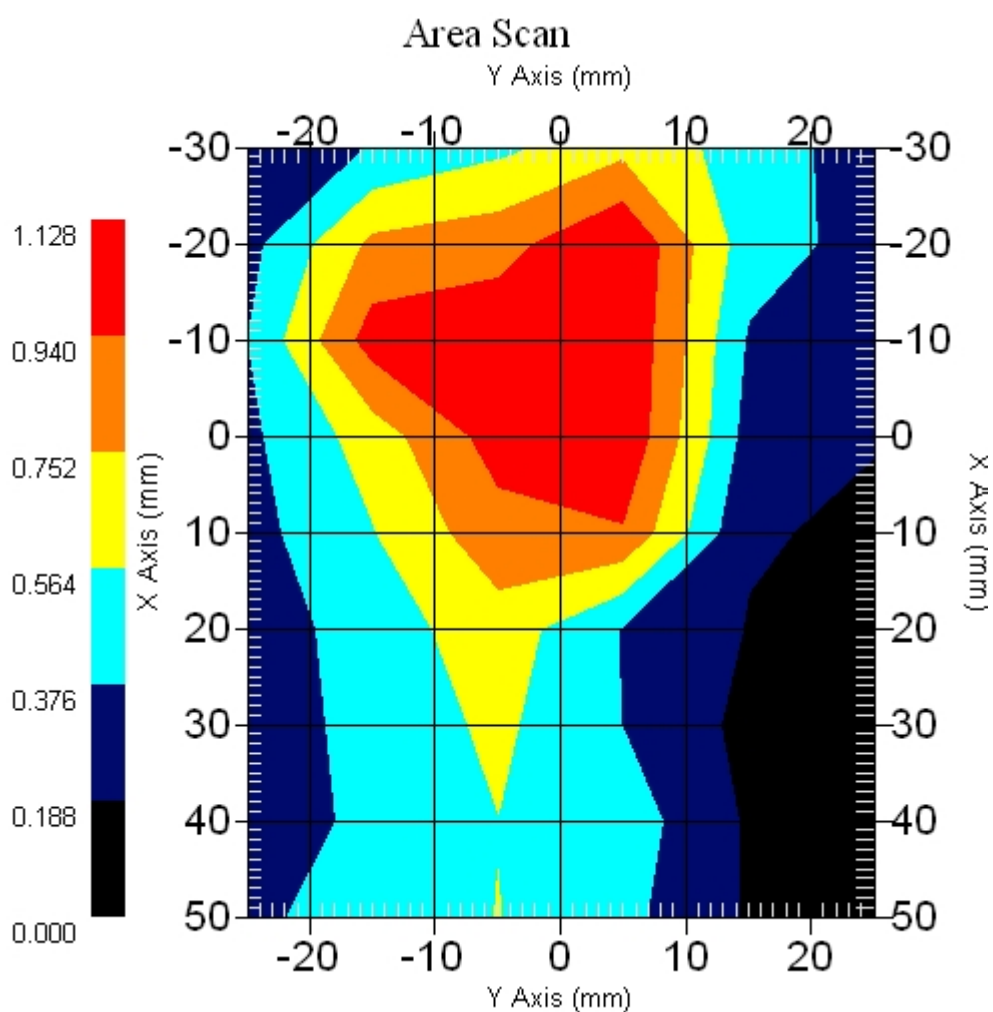
Measurement Data

Crest Factor : 1  
Scan Type : Complete  
Area Scan : 9x6x1 : Measurement x=10mm, y=10mm, z=4mm  
Zoom Scan : 9x9x13 : Measurement x=4mm, y=4mm, z=2.5mm

Other Data

DUT Position : Touch  
Separation : 0  
Channel : Mid - 5785MHz

Power Drift-Start : 1.204 W/kg  
Power Drift-Finish: 1.208 W/kg  
Power Drift (%) : 1.666  
Picture :



1 gram SAR value : 1.083 W/kg  
10 gram SAR value : 0.656 W/kg  
Area Scan Peak SAR : 1.127 W/kg  
Zoom Scan Peak SAR : 1.761 W/kg

■ 5785 MHz, EUT Position: Tablet, SL, 836 UMTS

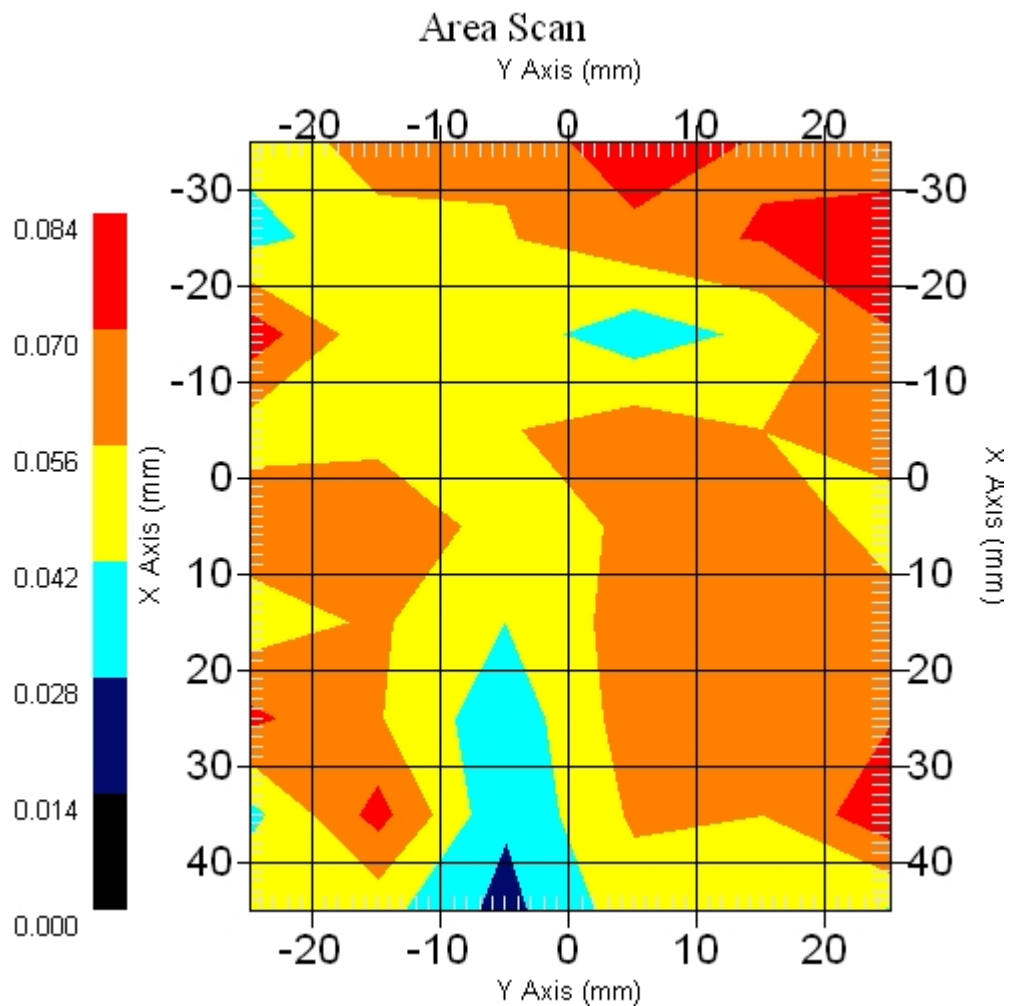
Measurement Data

Crest Factor : 1  
Scan Type : Complete  
Area Scan : 9x6x1 : Measurement x=10mm, y=10mm, z=4mm  
Zoom Scan : 9x9x13 : Measurement x=4mm, y=4mm, z=2.5mm

Other Data

DUT Position : Touch  
Separation : 0  
Channel : Mid - 5785MHz

Power Drift-Start : 0.062 W/kg  
Power Drift-Finish: 0.059 W/kg  
Power Drift (%) : -4.838  
Picture :



1 gram SAR value : 0.128 W/kg  
10 gram SAR value : 0.086 W/kg  
Area Scan Peak SAR : 0.082 W/kg  
Zoom Scan Peak SAR : 0.230 W/kg

■ **5785 MHz Only, EUT Position: Tablet, SP**

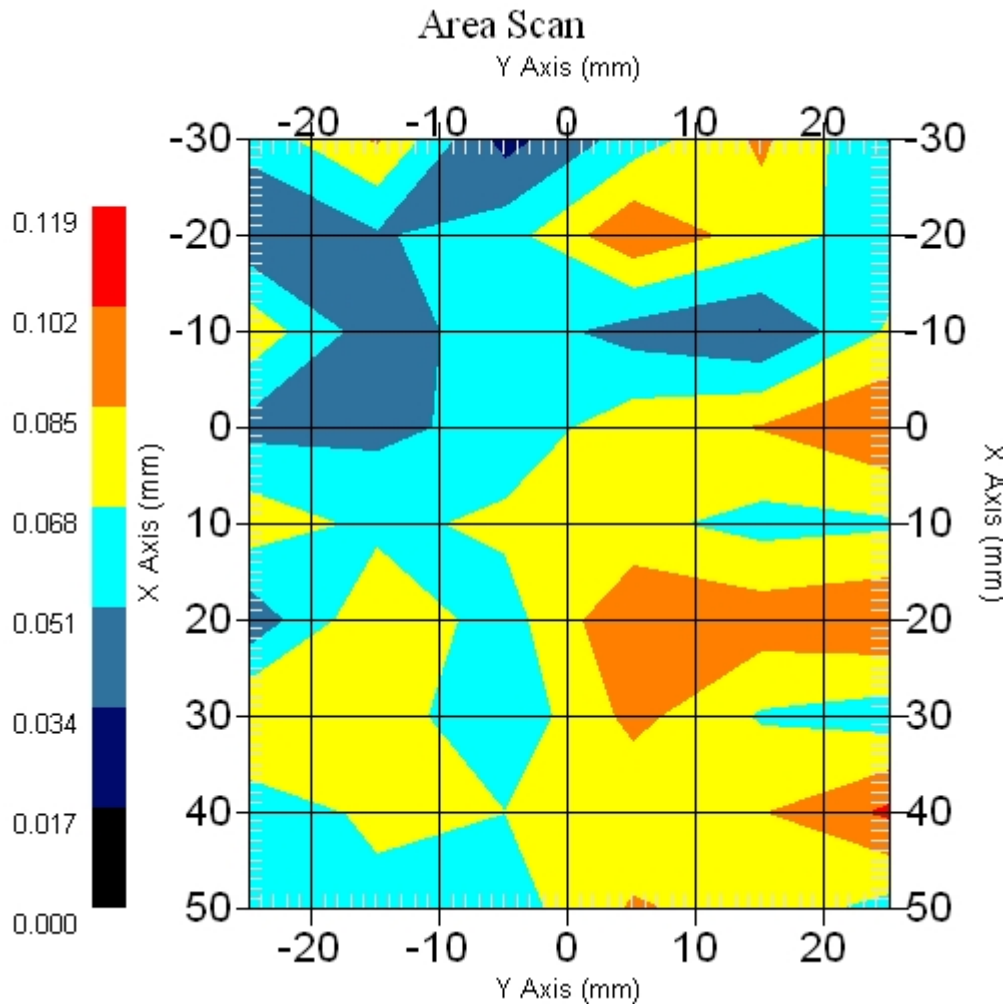
Measurement Data

Crest Factor : 1  
 Scan Type : Complete  
 Area Scan : 9x6x1 : Measurement x=10mm, y=10mm, z=4mm  
 Zoom Scan : 9x9x13 : Measurement x=4mm, y=4mm, z=2.5mm

Other Data

DUT Position : Touch  
 Separation : 0  
 Channel : Mid - 5785MHz

Power Drift-Start : 0.095 W/kg  
 Power Drift-Finish: 0.097 W/kg  
 Power Drift (%) : 2.105  
 Picture :



1 gram SAR value : 0.183 W/kg  
 10 gram SAR value : 0.135 W/kg  
 Area Scan Peak SAR : 0.105 W/kg  
 Zoom Scan Peak SAR : 0.310 W/kg

■ EUT Position: Tablet, SP, 836 UMTS Only

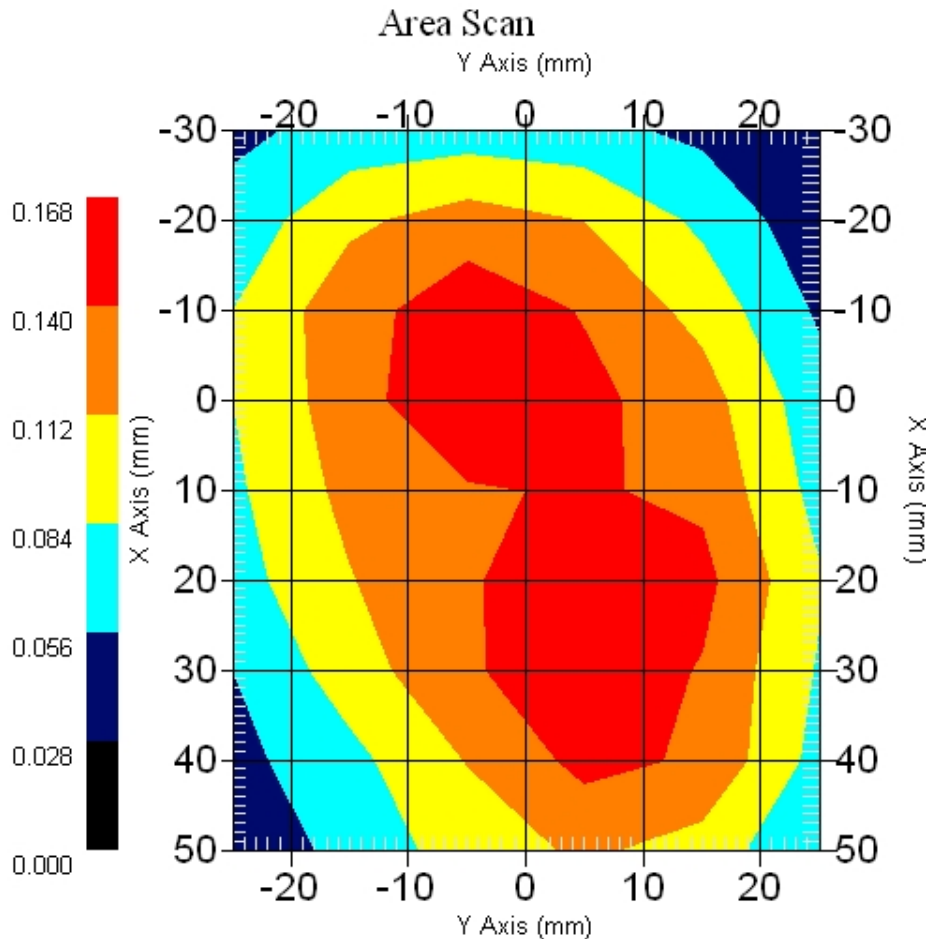
Measurement Data

Crest Factor : 1  
Scan Type : Complete  
Area Scan : 9x6x1 : Measurement x=10mm, y=10mm, z=4mm  
Zoom Scan : 9x9x13 : Measurement x=4mm, y=4mm, z=2.5mm

Other Data

DUT Position : Touch  
Separation : 0  
Channel : Mid - 5260MHz

Power Drift-Start : 0.158 W/kg  
Power Drift-Finish: 0.158 W/kg  
Power Drift (%) : -0.112  
Picture :



1 gram SAR value : 0.153 W/kg  
10 gram SAR value : 0.099 W/kg  
Area Scan Peak SAR : 0.168 W/kg  
Zoom Scan Peak SAR : 0.250 W/kg



■ **5785 MHz, EUT Position: Tablet, SP, 1880 GSM**

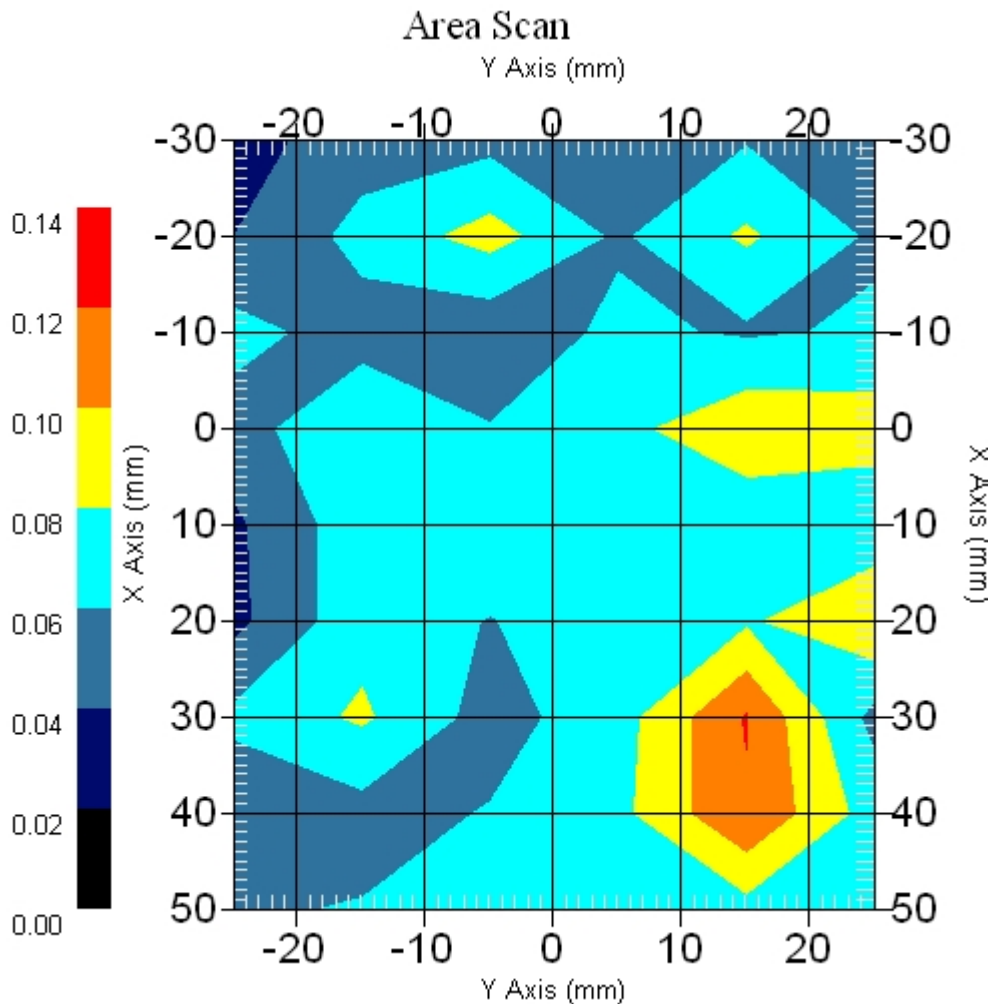
Measurement Data

Crest Factor : 1  
Scan Type : Complete  
Area Scan : 9x6x1 : Measurement x=10mm, y=10mm, z=4mm  
Zoom Scan : 5x5x11 : Measurement x=8mm, y=8mm, z=3mm

Other Data

DUT Position : Touch  
Separation : 0  
Channel : Mid - 5825MHz

Power Drift-Start : 0.073 W/kg  
Power Drift-Finish: 0.071 W/kg  
Power Drift (%) : -3.435  
Picture : (No picture)



1 gram SAR value : 0.133 W/kg  
10 gram SAR value : 0.126 W/kg  
Area Scan Peak SAR : 0.121 W/kg  
Zoom Scan Peak SAR : 0.180 W/kg

■ **5785 MHz, EUT Position: Tablet, SP, 1880 GSM**

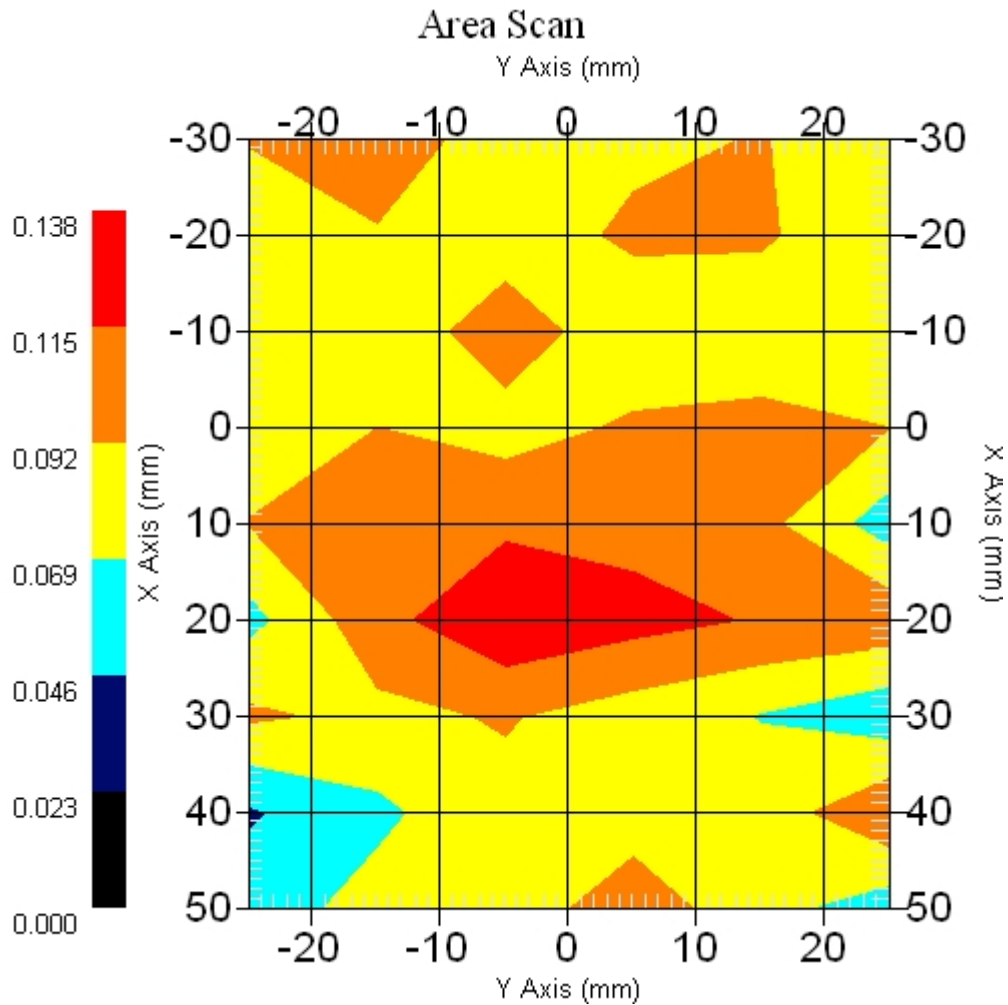
Measurement Data

Crest Factor : 1  
Scan Type : Complete  
Area Scan : 9x6x1 : Measurement x=10mm, y=10mm, z=4mm  
Zoom Scan : 9x9x13 : Measurement x=4mm, y=4mm, z=2.5mm

Other Data

DUT Position : Touch  
Separation : 0  
Channel : Mid - 5785MHz

Power Drift-Start : 0.117 W/kg  
Power Drift-Finish: 0.122 W/kg  
Power Drift (%) : 4.273  
Picture :



1 gram SAR value : 0.160 W/kg  
10 gram SAR value : 0.116 W/kg  
Area Scan Peak SAR : 0.135 W/kg  
Zoom Scan Peak SAR : 0.430 W/kg

■ 5785 MHz, EUT Position: Tablet, SP, 1880 UMTS

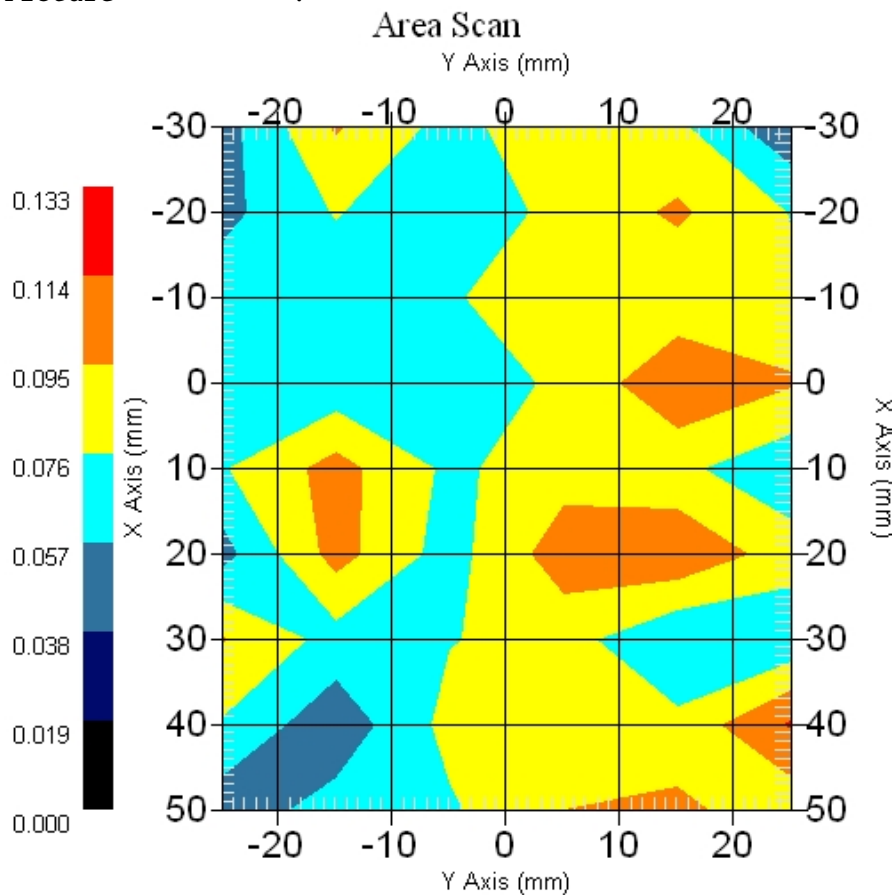
Measurement Data

Crest Factor : 1  
Scan Type : Complete  
Area Scan : 9x6x1 : Measurement x=10mm, y=10mm, z=4mm  
Zoom Scan : 9x9x13 : Measurement x=4mm, y=4mm, z=2.5mm

Other Data

DUT Position : Touch  
Separation : 0  
Channel : Mid - 5825MHz

Power Drift-Start : 0.069 W/kg  
Power Drift-Finish: 0.069 W/kg  
Power Drift (%) : -0.002  
Picture :

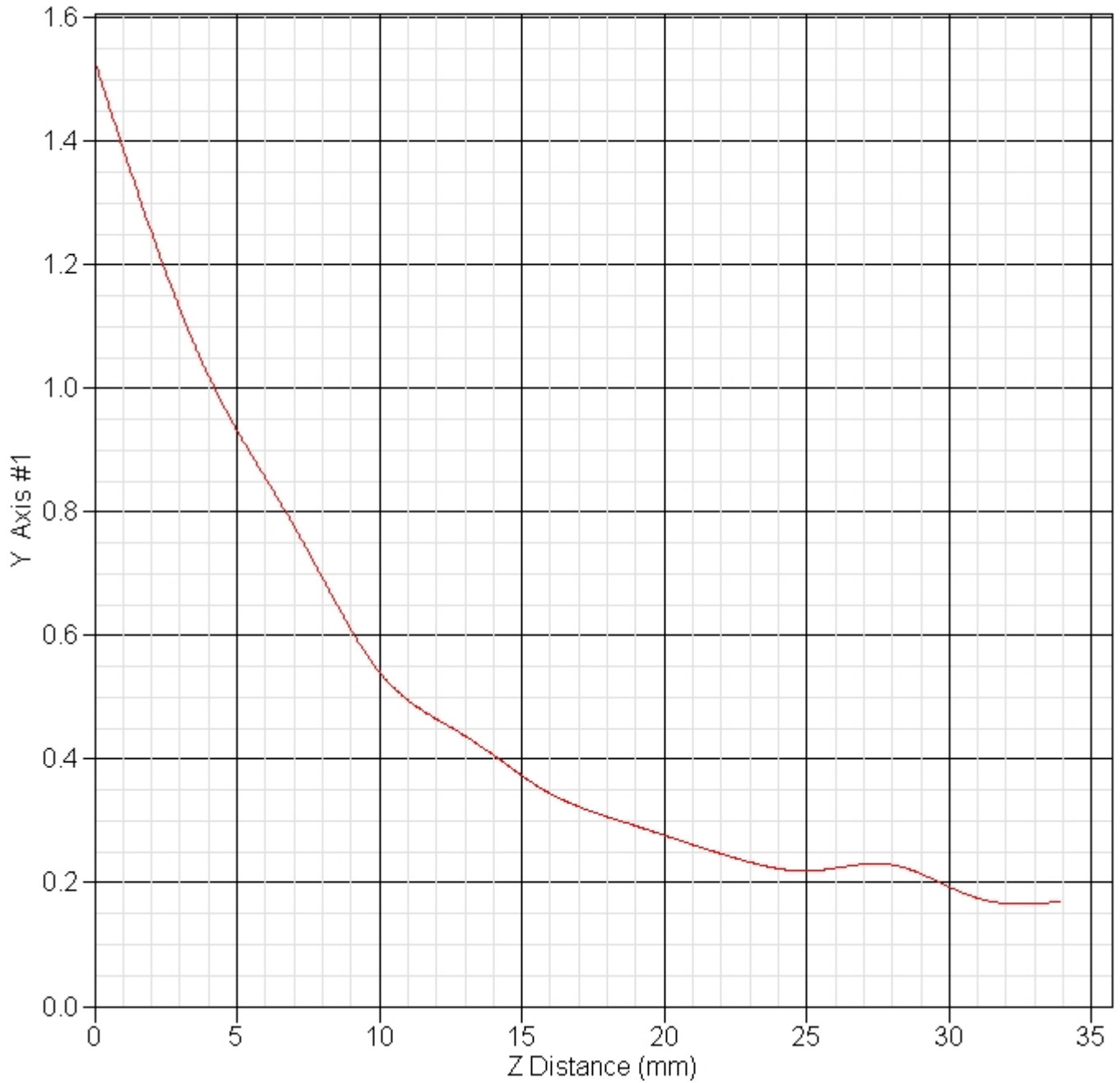


1 gram SAR value : 0.181 W/kg  
10 gram SAR value : 0.176 W/kg  
Area Scan Peak SAR : 0.116 W/kg  
Zoom Scan Peak SAR : 0.340 W/kg

■ Z Axis 802.11a 5785 MHz, Position: Tablet SP, 836 GSM

SAR-Z Axis

at Hotspot x:20.20 y:-5.00

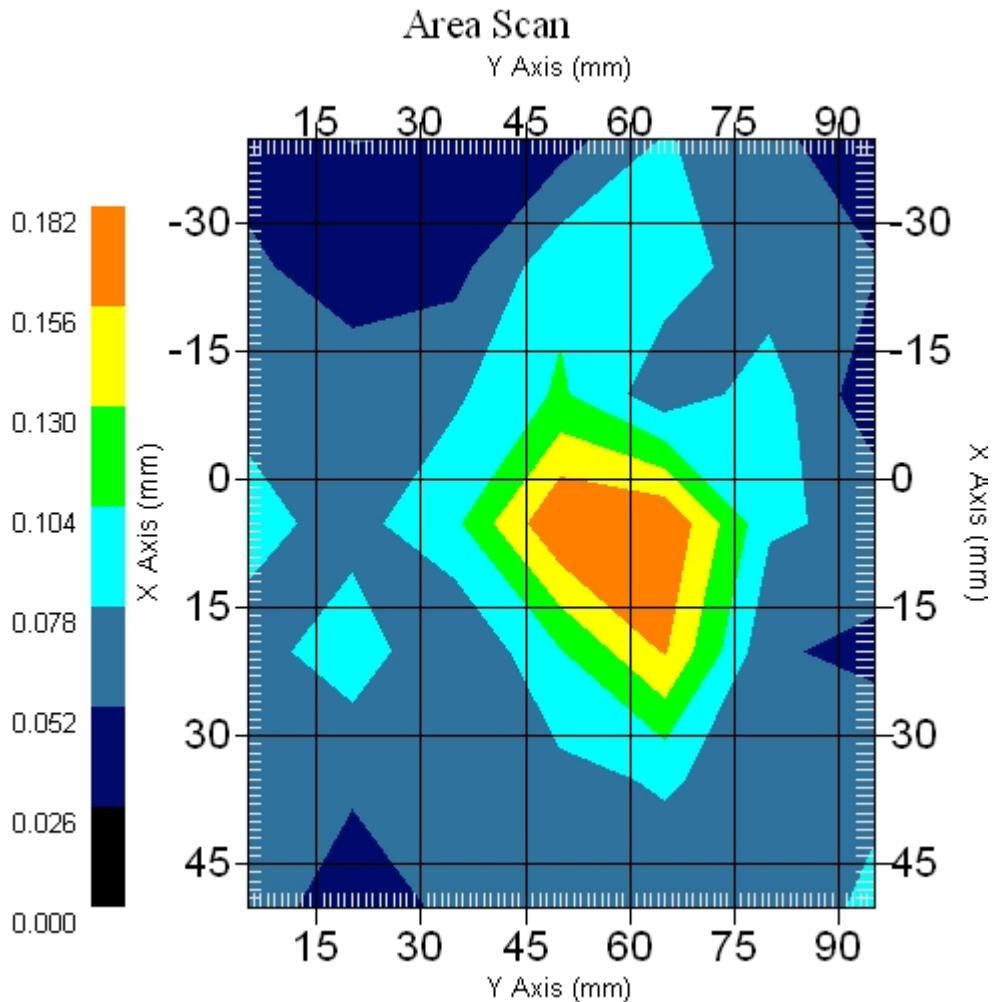


### 14.2 802.11a (5725 ~ 5850MHz) + Akita (GSM, EGSM) : FCCID N7NMC8755 +Bluetooth

#### ■ 5785 MHz Only, EUT Position: Laptop

Measurement Data

Crest Factor : 1  
Scan Type : Complete  
Area Scan : 7x7x1 : Measurement x=15mm, y=15mm, z=4mm  
Zoom Scan : 9x9x13 : Measurement x=4mm, y=4mm, z=2.5mm  
Other Data  
DUT Position : Touch  
Separation : 0  
Channel : Mid - 5260MHz  
Power Drift-Start : 0.082 W/kg  
Power Drift-Finish : 0.083 W/kg  
Power Drift (%) : 1.219  
Picture :



1 gram SAR value : 0.110 W/kg  
10 gram SAR value : 0.083 W/kg  
Area Scan Peak SAR : 0.182 W/kg  
Zoom Scan Peak SAR : 0.295 W/kg

■ **EUT Position: Laptop, 836 GSM Only**

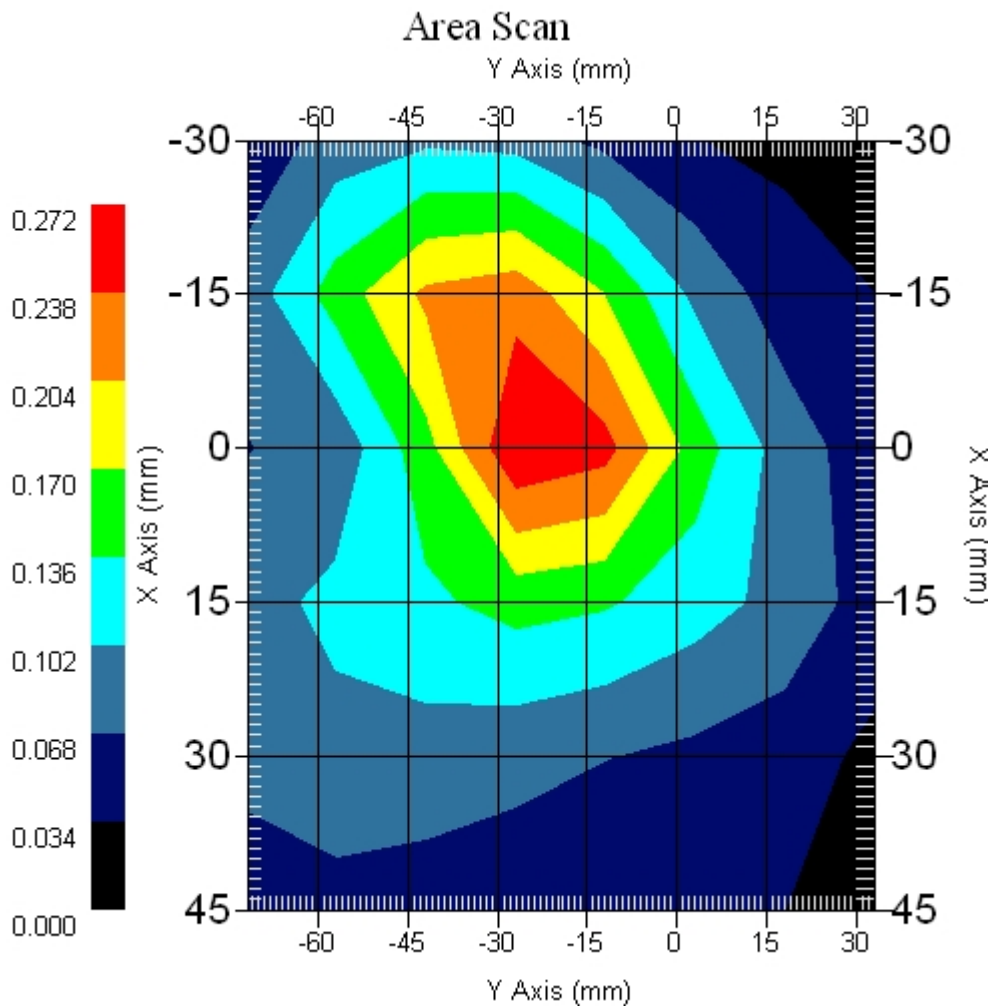
Measurement Data

Crest Factor : 8  
Scan Type : Complete  
Area Scan : 6x8x1 : Measurement x=15mm, y=15mm, z=4mm  
Zoom Scan : 5x5x8 : Measurement x=8mm, y=8mm, z=4mm

Other Data

DUT Position : Touch  
Separation : 0  
Channel : Mid - 800MHz

Power Drift-Start : 0.172 W/kg  
Power Drift-Finish: 0.176 W/kg  
Power Drift (%) : 2.325  
Picture :



1 gram SAR value : 0.260 W/kg  
10 gram SAR value : 0.165 W/kg  
Area Scan Peak SAR : 0.270 W/kg  
Zoom Scan Peak SAR : 0.390 W/kg

■ 5785 MHz Only, EUT Position: Laptop

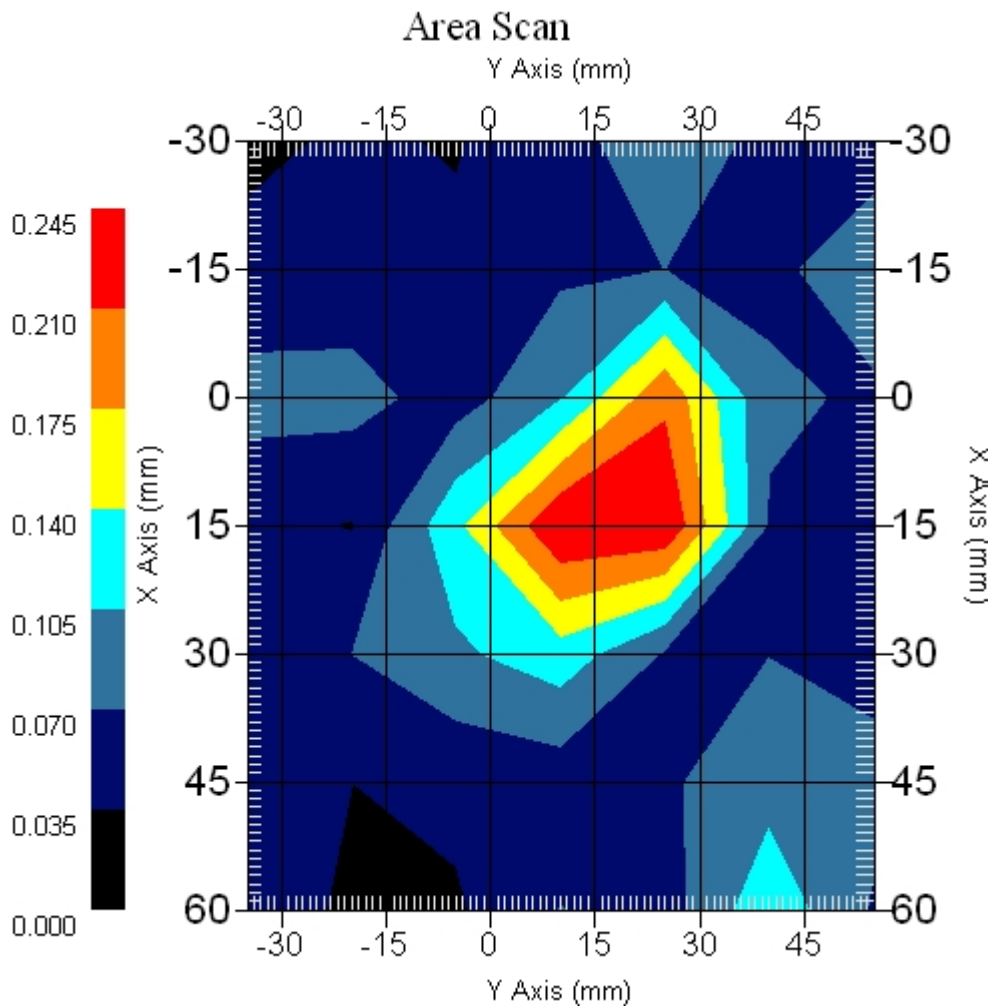
Measurement Data

Crest Factor : 1  
Scan Type : Complete  
Area Scan : 7x7x1 : Measurement x=15mm, y=15mm, z=4mm  
Zoom Scan : 9x9x13 : Measurement x=4mm, y=4mm, z=2.5mm

Other Data

DUT Position : Touch  
Separation : 0  
Channel : Mid - 5260MHz

Power Drift-Start : 0.053 W/kg  
Power Drift-Finish: 0.051 W/kg  
Power Drift (%) : -3.773  
Picture : (No picture)



1 gram SAR value : 0.139 W/kg  
10 gram SAR value : 0.078 W/kg  
Area Scan Peak SAR : 0.244 W/kg  
Zoom Scan Peak SAR : 0.368 W/kg

■ **5785 MHz, EUT Position: Tablet, PL 836 GSM**

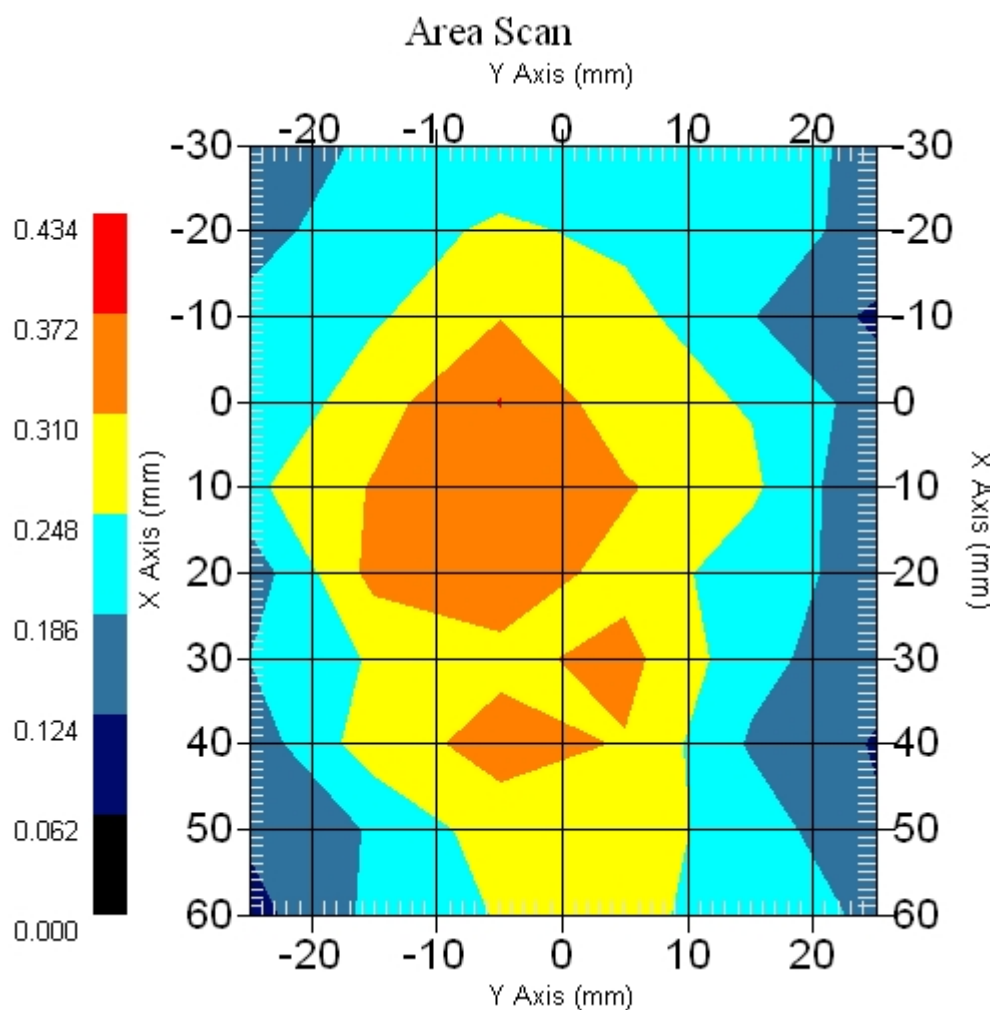
Measurement Data

Crest Factor : 1  
Scan Type : Complete  
Area Scan : 10x6x1 : Measurement x=10mm, y=10mm, z=4mm  
Zoom Scan : 9x9x13 : Measurement x=4mm, y=4mm, z=2.5mm

Other Data

DUT Position : Touch  
Separation : 0  
Channel : Mid - 5785MHz

Power Drift-Start : 0.345 W/kg  
Power Drift-Finish: 0.352 W/kg  
Power Drift (%) : 2.192  
Picture :



1 gram SAR value : 0.370 W/kg  
10 gram SAR value : 0.295 W/kg  
Area Scan Peak SAR : 0.374 W/kg  
Zoom Scan Peak SAR : 0.600 W/kg



■ **5785 MHz, EUT Position: Tablet, PP 836 GSM**

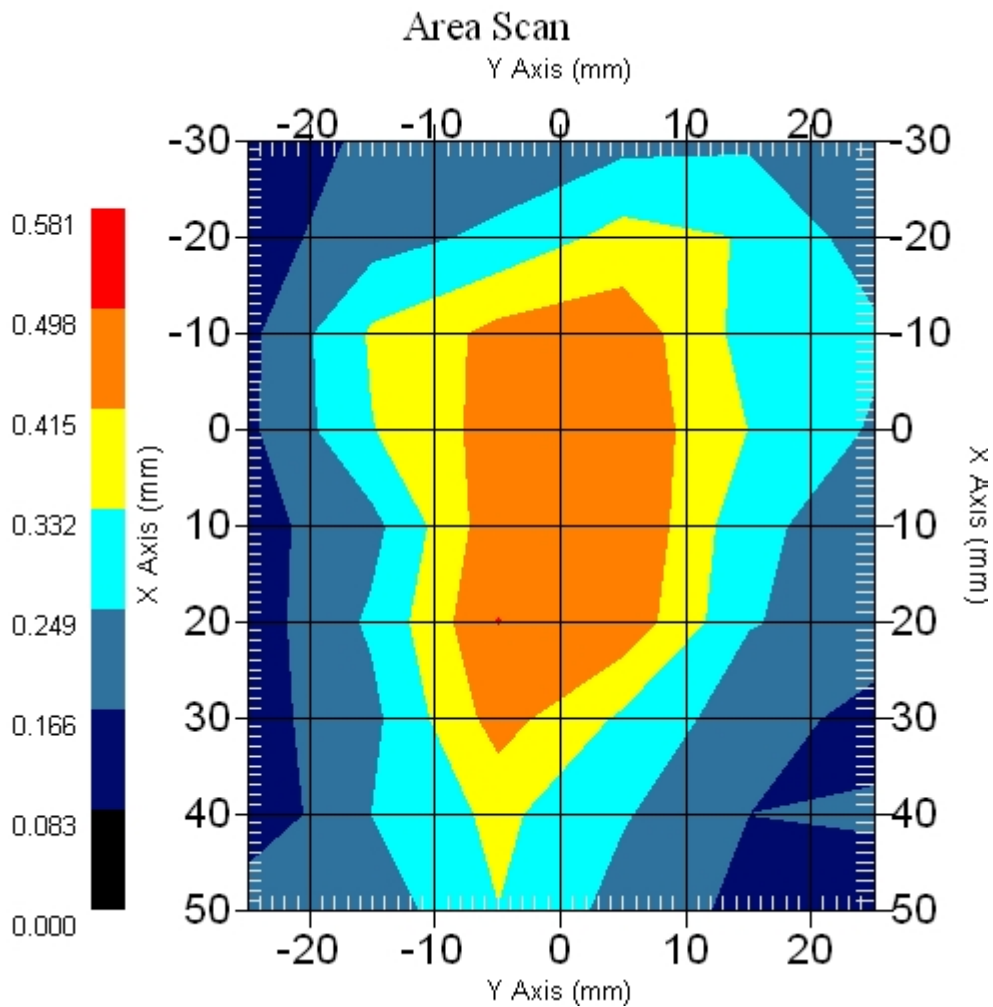
Measurement Data

Crest Factor : 1  
Scan Type : Complete  
Area Scan : 9x6x1 : Measurement x=10mm, y=10mm, z=4mm  
Zoom Scan : 9x9x13 : Measurement x=4mm, y=4mm, z=2.5mm

Other Data

DUT Position : Touch  
Separation : 0  
Channel : Mid - 5785MHz

Power Drift-Start : 0.594 W/kg  
Power Drift-Finish: 0.565 W/kg  
Power Drift (%) : -4.882  
Picture :



1 gram SAR value : 0.484 W/kg  
10 gram SAR value : 0.325 W/kg  
Area Scan Peak SAR : 0.499 W/kg  
Zoom Scan Peak SAR : 0.910 W/kg

■ **5785 MHz, EUT Position: Tablet, SL 836 GSM**

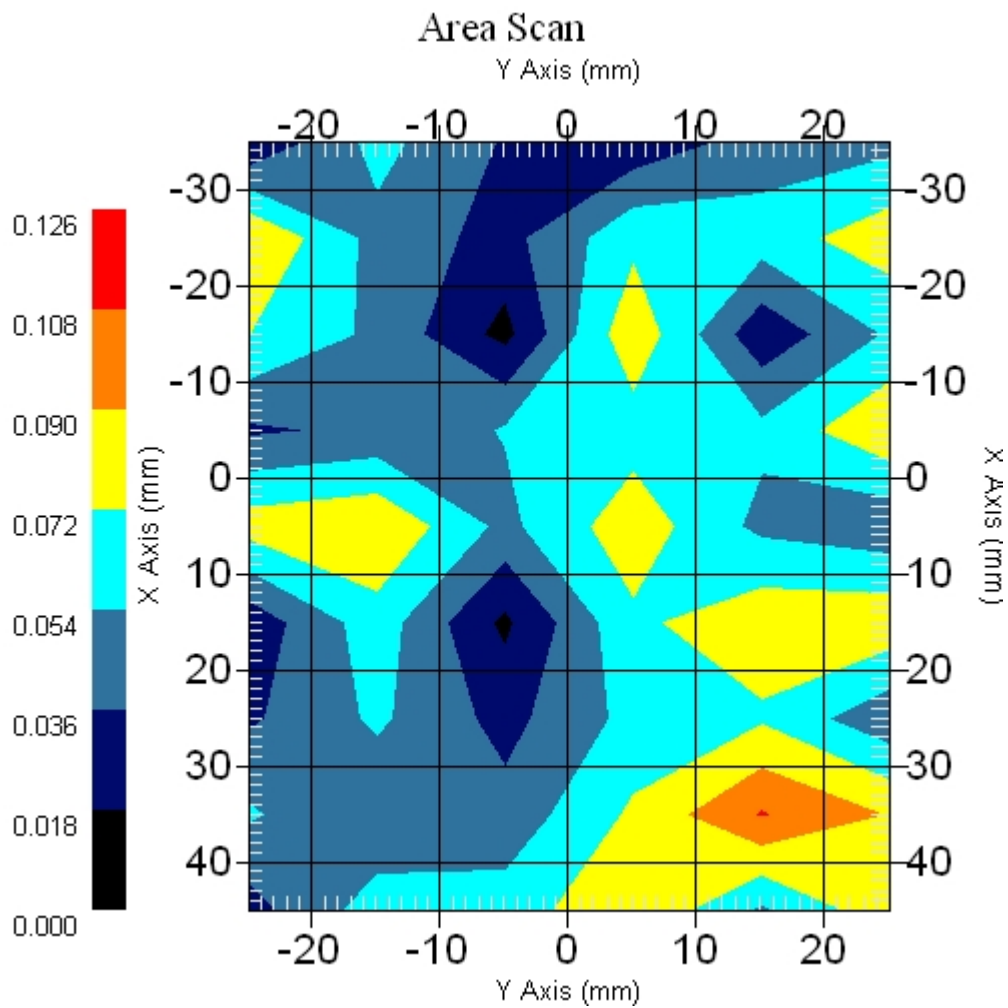
Measurement Data

Crest Factor : 1  
Scan Type : Complete  
Area Scan : 9x6x1 : Measurement x=10mm, y=10mm, z=4mm  
Zoom Scan : 9x9x13 : Measurement x=4mm, y=4mm, z=2.5mm

Other Data

DUT Position : Touch  
Separation : 0  
Channel : Mid - 5785

Power Drift-Start : 0.079 W/kg  
Power Drift-Finish: 0.076 W/kg  
Power Drift (%) : -3.797  
Picture :



1 gram SAR value : 0.134 W/kg  
10 gram SAR value : 0.099 W/kg  
Area Scan Peak SAR : 0.109 W/kg  
Zoom Scan Peak SAR : 0.220 W/kg

■ 5745 MHz Only, EUT Position: Tablet, SP

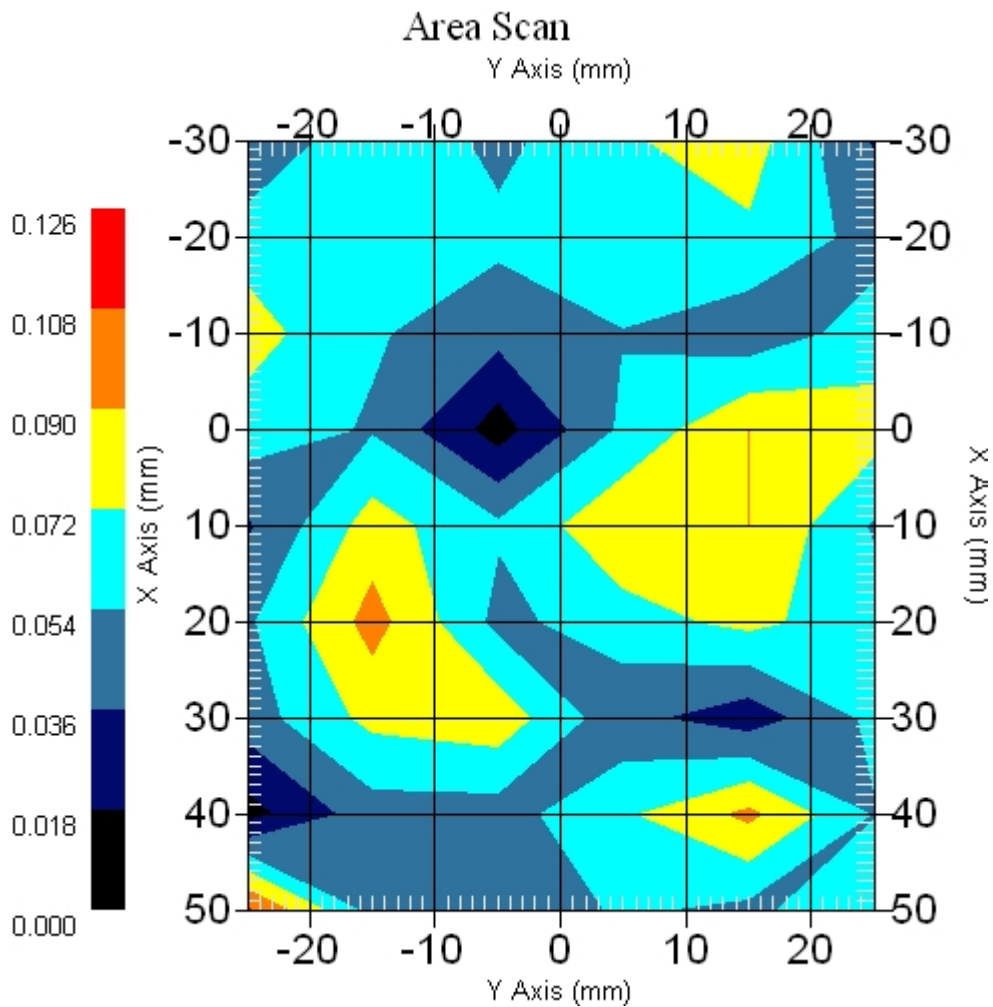
Measurement Data

Crest Factor : 1  
Scan Type : Complete  
Area Scan : 9x6x1 : Measurement x=10mm, y=10mm, z=4mm  
Zoom Scan : 9x9x13 : Measurement x=4mm, y=4mm, z=2.5mm

Other Data

DUT Position : Touch  
Separation : 0  
Channel : Mid - 5745MHz

Power Drift-Start : 0.066 W/kg  
Power Drift-Finish: 0.069 W/kg  
Power Drift (%) : 4.729  
Picture :



1 gram SAR value : 0.099 W/kg  
10 gram SAR value : 0.078 W/kg  
Area Scan Peak SAR : 0.110 W/kg  
Zoom Scan Peak SAR : 0.130 W/kg

■ EUT Position: Tablet ,SP, 836 GSM Only

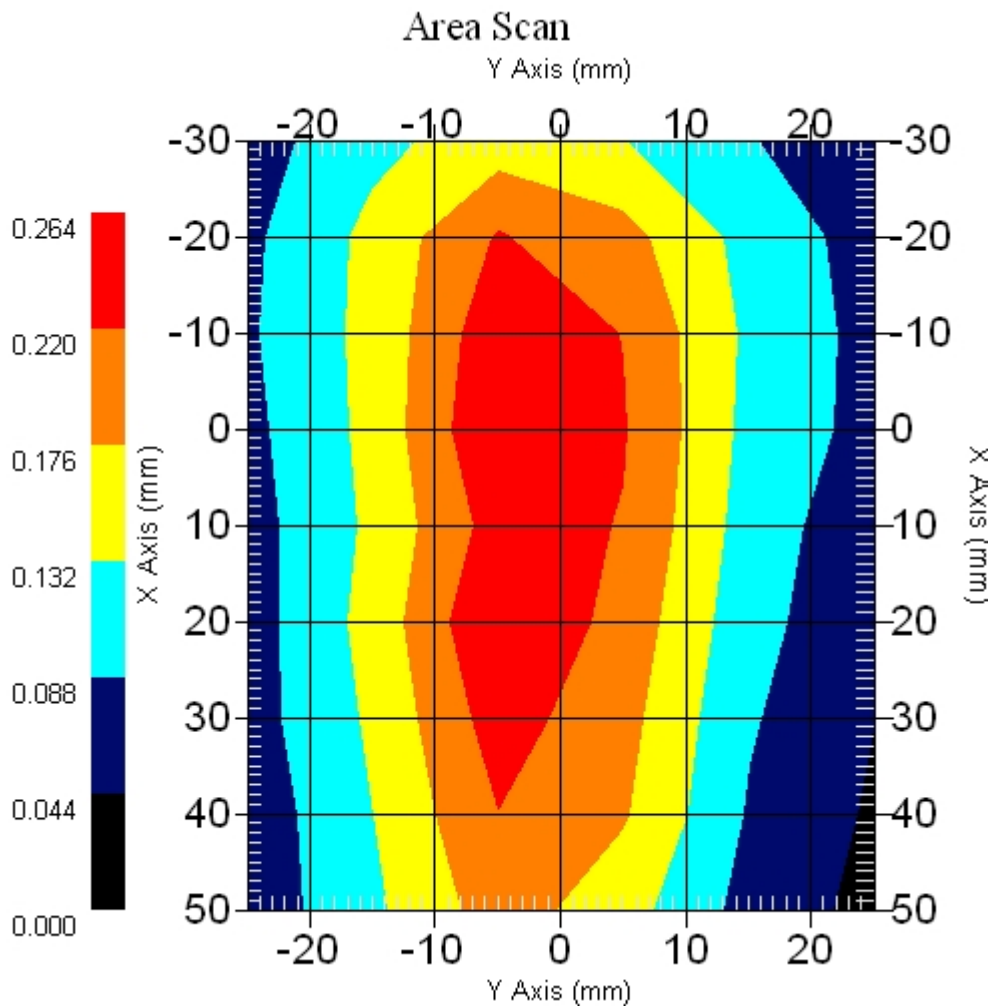
Measurement Data

Crest Factor : 8  
Scan Type : Complete  
Area Scan : 9x6x1 : Measurement x=10mm, y=10mm, z=4mm  
Zoom Scan : 5x5x8 : Measurement x=8mm, y=8mm, z=4mm

Other Data

DUT Position : Touch  
Separation : 0  
Channel : Mid - 800MHz

Power Drift-Start : 0.266 W/kg  
Power Drift-Finish: 0.261 W/kg  
Power Drift (%) : -1.879  
Picture :



1 gram SAR value : 0.242 W/kg  
10 gram SAR value : 0.151 W/kg  
Area Scan Peak SAR : 0.263 W/kg  
Zoom Scan Peak SAR : 0.400 W/kg