

■ 5260 MHz, EUT Position: Tablet, PL, 1880 EV-DO

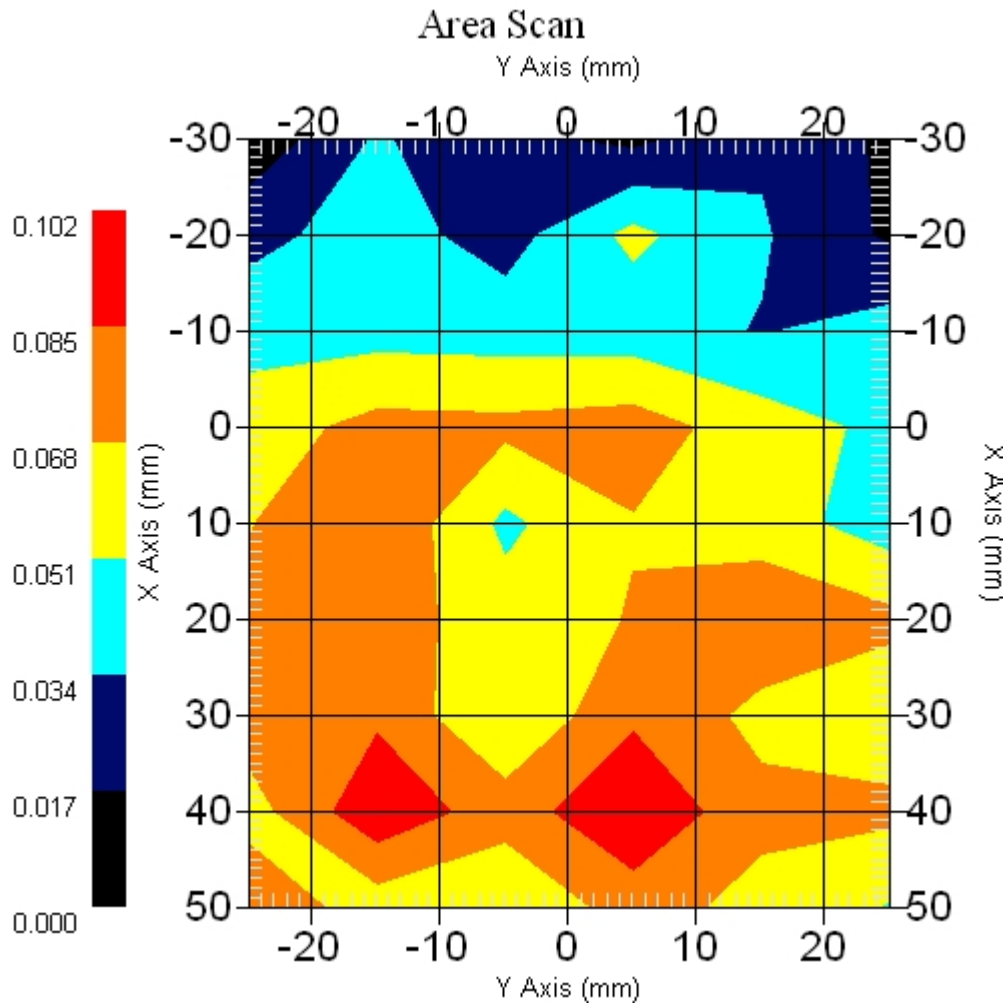
Measurement Data

Crest Factor : 1  
Scan Type : Complete  
Area Scan : 9x6x1 : Measurement x=10mm, y=10mm, z=4mm  
Zoom Scan : 9x9x13 : Measurement x=4mm, y=4mm, z=2.5mm

Other Data

DUT Position : Touch  
Separation : 0  
Channel : Mid - 5260MHz

Power Drift-Start : 0.057 W/kg  
Power Drift-Finish: 0.059 W/kg  
Power Drift (%) : 3.509



1 gram SAR value : 0.135 W/kg  
10 gram SAR value : 0.114 W/kg  
Area Scan Peak SAR : 0.100 W/kg  
Zoom Scan Peak SAR : 0.270 W/kg

■ **5260 MHz, EUT Position: Tablet, PP, 1880 EV-DO**

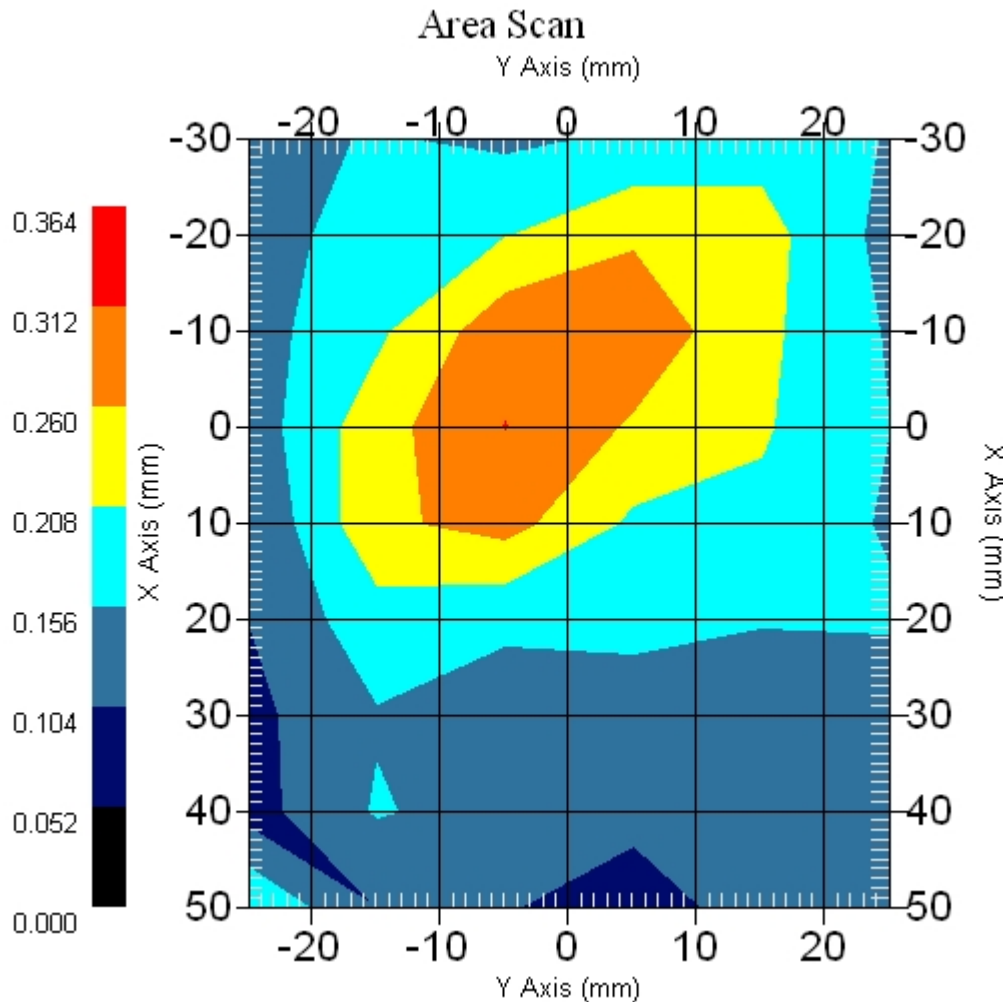
Measurement Data

Crest Factor : 1  
Scan Type : Complete  
Area Scan : 9x6x1 : Measurement x=10mm, y=10mm, z=4mm  
Zoom Scan : 9x9x13 : Measurement x=4mm, y=4mm, z=2.5mm

Other Data

DUT Position : Touch  
Separation : 0  
Channel : Mid - 5260MHz

Power Drift-Start : 0.326 W/kg  
Power Drift-Finish: 0.310 W/kg  
Power Drift (%) : -4.747



1 gram SAR value : 0.268 W/kg  
10 gram SAR value : 0.180 W/kg  
Area Scan Peak SAR : 0.313 W/kg  
Zoom Scan Peak SAR : 0.440 W/kg

■ 5260 MHz, EUT Position: Tablet, SL, 1880 EV-DO

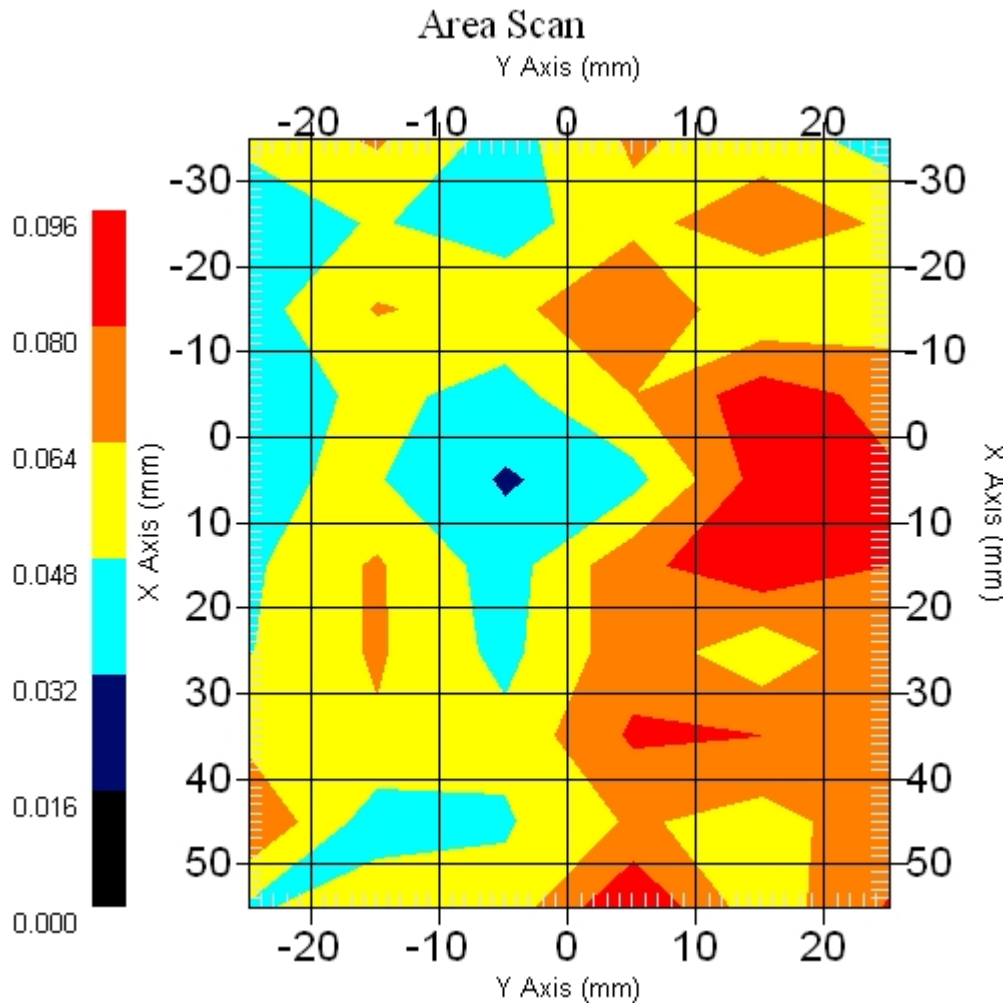
Measurement Data

Crest Factor : 1  
Scan Type : Complete  
Area Scan : 10x6x1 : Measurement x=10mm, y=10mm, z=4mm  
Zoom Scan : 9x9x13 : Measurement x=4mm, y=4mm, z=2.5mm

Other Data

DUT Position : Touch  
Separation : 0  
Channel : Mid - 5260MHz

Power Drift-Start : 0.054 W/kg  
Power Drift-Finish: 0.052 W/kg  
Power Drift (%) : -3.703



1 gram SAR value : 0.108 W/kg  
10 gram SAR value : 0.087 W/kg  
Area Scan Peak SAR : 0.096 W/kg  
Zoom Scan Peak SAR : 0.310 W/kg

■ 5260 MHz, EUT Position: Tablet, SP, 1880 EV-DO

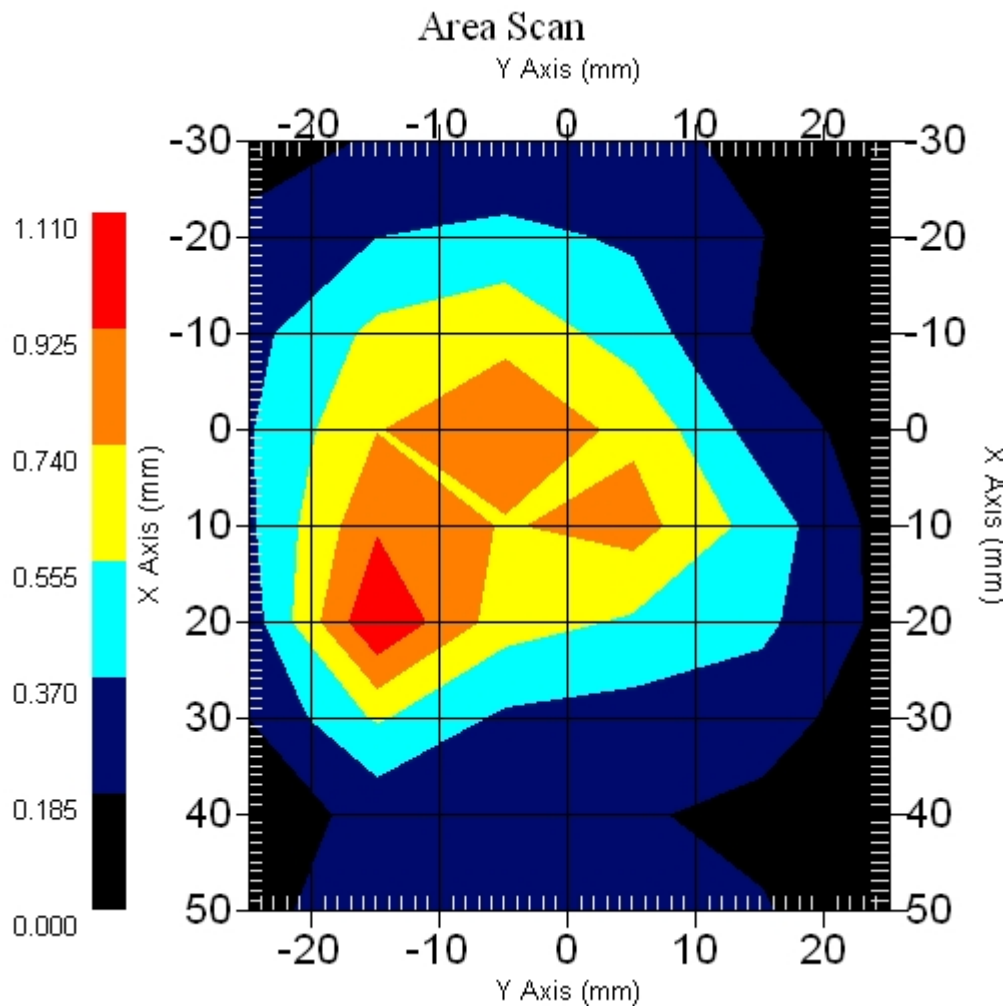
Measurement Data

Crest Factor : 1  
Scan Type : Complete  
Area Scan : 9x6x1 : Measurement x=10mm, y=10mm, z=4mm  
Zoom Scan : 9x9x13 : Measurement x=4mm, y=4mm, z=2.5mm

Other Data

DUT Position : Touch  
Separation : 0  
Channel : Mid - 5260MHz

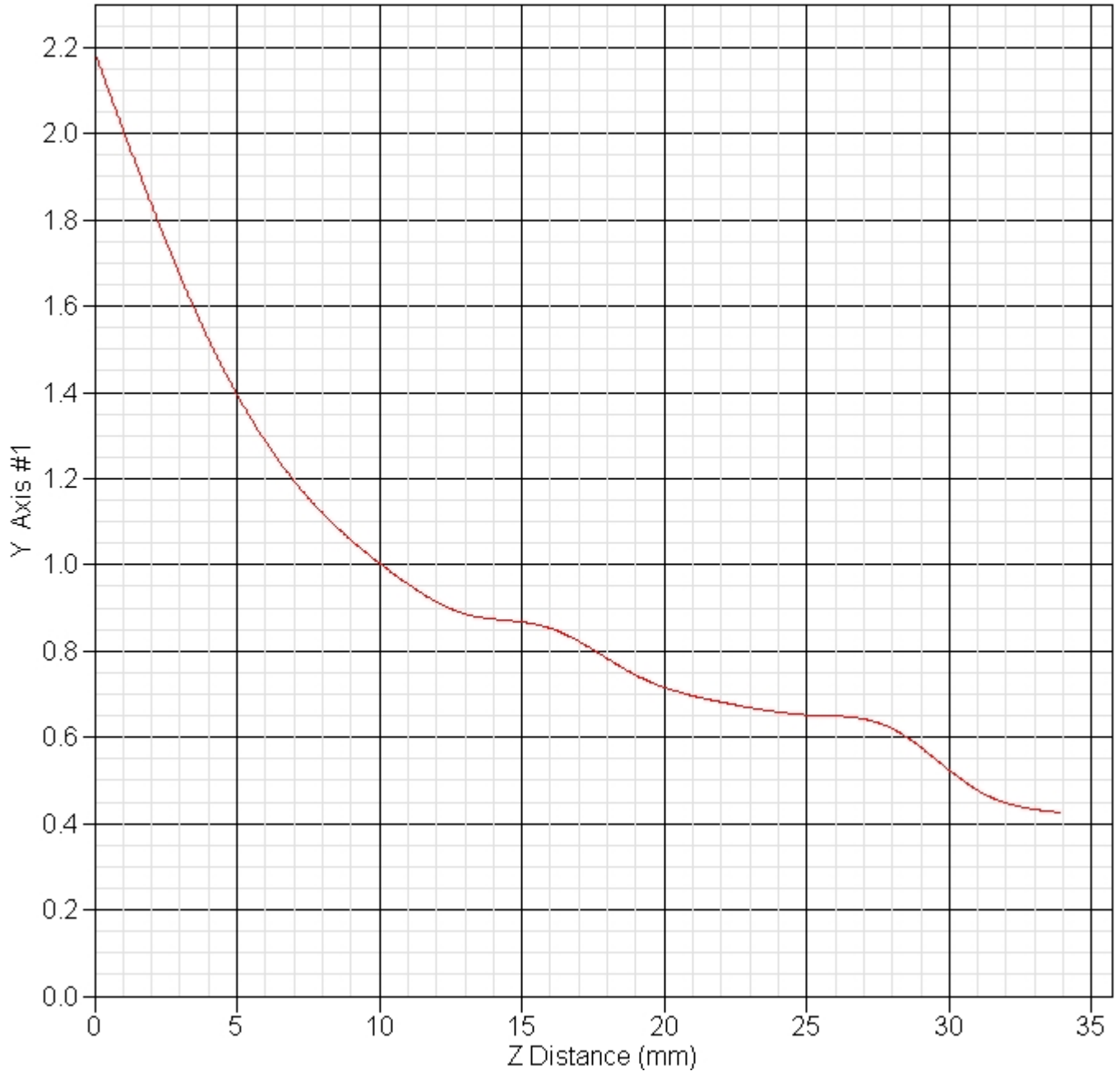
Power Drift-Start : 0.687 W/kg  
Power Drift-Finish: 0.667 W/kg  
Power Drift (%) : -2.911



1 gram SAR value : 0.833 W/kg  
10 gram SAR value : 0.464 W/kg  
Area Scan Peak SAR : 1.109 W/kg  
Zoom Scan Peak SAR : 1.661 W/kg

■ Z Axis 802.11a 5260 MHz, Position: Tablet SP, 836 GSM

SAR-Z Axis  
at Hotspot x:-14.50 y:-60.00



## 14. 802.11a (5725 ~ 5850MHz) SAR measurement Data

### 14.1. 802.11a (5725 ~ 5850MHz) + Karafuto (GSM, EGSM, UMTS) : FCCID N7NMC8765 +Bluetooth

#### 5785MHz

Measurement Date : 14-Aug-2006

##### Product Data

Device Name : Golan  
Serial No. : 11.a-Botton\_1-GSM800  
Type : Other  
Model : 1  
Frequency : 5785.00 MHz  
Max. Transmit Pwr : 0.069 W  
Drift Time : 0 min(s)  
Length : 230 mm  
Width : 270 mm  
Depth : 22 mm  
Antenna Type : Internal  
Orientation : Touch

##### Phantom Data

Name : APREL-Uni  
Type : Uni-Phantom  
Size (mm) : 280 x 280 x 200  
Serial No. : System Default  
Location : Center  
Description : uni\_1

##### Tissue Data

Type : BODY  
Serial No. : 5800-B-AU-18  
Frequency : 5800.00 MHz  
Last Calib. Date : 14-Aug-2006  
Temperature : 22.30 °C  
Ambient Temp. : 22.70 °C  
Humidity : 48.00 RH%  
Epsilon : 47.63 F/m  
Sigma : 5.47 S/m  
Density : 1000.00 kg/cu. m

##### Probe Data

Name : E-field Probe  
Model : ALS-E-020  
Type : E-Field Triangle  
Serial No. : 266  
Last Calib. Date : 22-Jun-2006  
Frequency : 5800.00 MHz  
Duty Cycle Factor: 1  
Conversion Factor: 4.2  
Probe Sensitivity: 1.20 1.20 1.20  $\mu\text{V}/(\text{V}/\text{m})^2$   
Compression Point: 95.00 mV  
Offset : 1.56 mm

## 836MHz

Measurement Date : 14-Aug-2006

### Product Data

Device Name : Golan  
Serial No. : 11.a-Botton-GSM800  
Type : Other  
Model : 1  
Frequency : 836.00 MHz  
Max. Transmit Pwr : 1.61 W  
Drift Time : 0 min(s)  
Length : 230 mm  
Width : 270 mm  
Depth : 10 mm  
Antenna Type : Internal  
Orientation : Touch  
Power Drift-Start : 0.172 W/kg  
Power Drift-Finish: 0.176 W/kg  
Power Drift (%) : 2.325  
Picture :

### Phantom Data

Name : APREL-Uni  
Type : Uni-Phantom  
Size (mm) : 280 x 280 x 200  
Serial No. : System Default  
Location : Center  
Description : uni\_1

### Tissue Data

Type : BODY  
Serial No. : 835BODY  
Frequency : 835.00 MHz  
Last Calib. Date : 16-Aug-2006  
Temperature : 21.40 °C  
Ambient Temp. : 21.90 °C  
Humidity : 51.00 RH%  
Epsilon : 54.15 F/m  
Sigma : 0.95 S/m  
Density : 1000.00 kg/cu. m

### Probe Data

Name : E-field Probe  
Model : ALS-E-020  
Type : E-Field Triangle  
Serial No. : 266  
Last Calib. Date : 22-Jun-2006  
Frequency : 835.00 MHz  
Duty Cycle Factor: 1  
Conversion Factor: 6.9  
Probe Sensitivity: 1.20 1.20 1.20  $\mu\text{V}/(\text{V}/\text{m})^2$   
Compression Point: 95.00 mV  
Offset : 1.56 mm

■ **5785 MHz Only, EUT Position: Laptop**

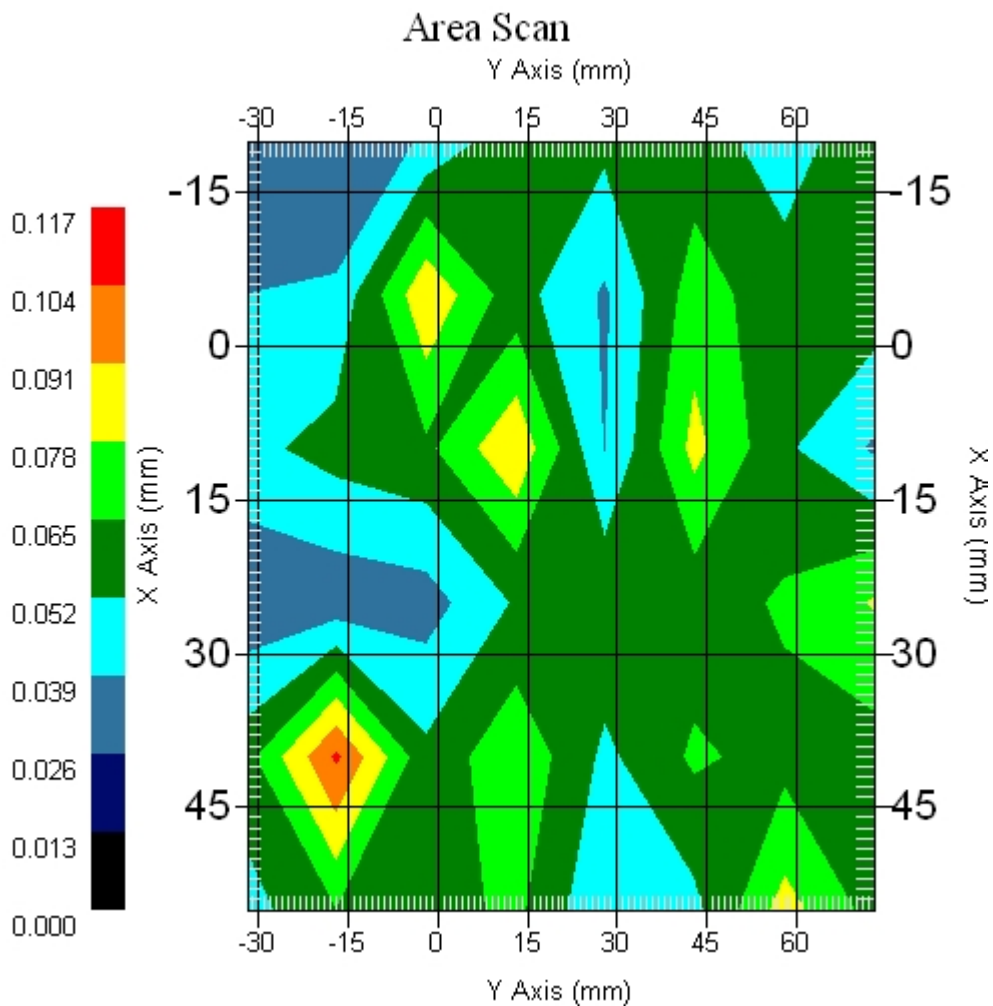
Measurement Data

Crest Factor : 1  
Scan Type : Complete  
Area Scan : 6x8x1 : Measurement x=15mm, y=15mm, z=4mm  
Zoom Scan : 9x9x13 : Measurement x=4mm, y=4mm, z=2.5mm

Other Data

DUT Position : Touch  
Separation : 0  
Channel : Mid - 5785MHz

Power Drift-Start : 0.079 W/kg  
Power Drift-Finish: 0.078 W/kg  
Power Drift (%) : -0.061  
Picture :



1 gram SAR value : 0.139 W/kg  
10 gram SAR value : 0.103 W/kg  
Area Scan Peak SAR : 0.106 W/kg  
Zoom Scan Peak SAR : 0.340 W/kg



■ EUT Position: Laptop, 836 GSM Only

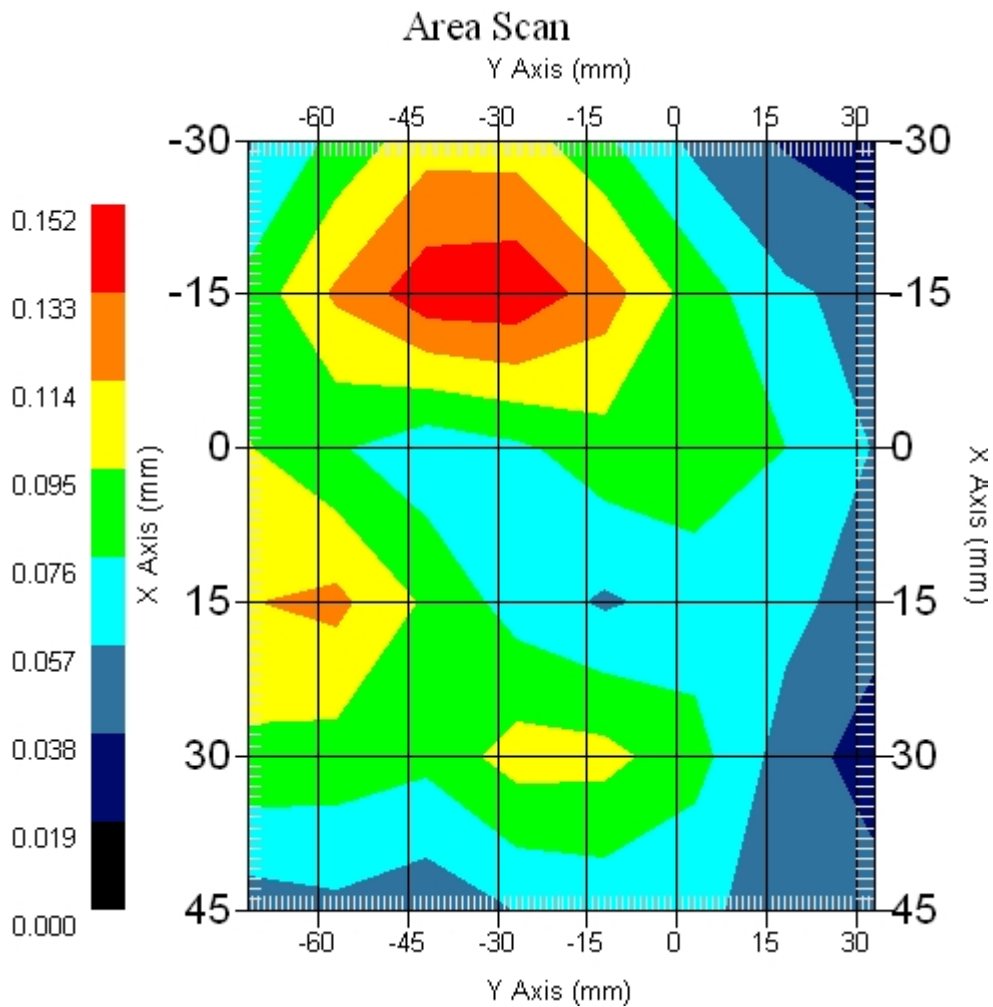
Measurement Data

Crest Factor : 1  
Scan Type : Complete  
Area Scan : 6x8x1 : Measurement x=15mm, y=15mm, z=4mm  
Zoom Scan : 5x5x8 : Measurement x=8mm, y=8mm, z=4mm

Other Data

DUT Position : Touch  
Separation : 0  
Channel : Mid - 800MHz

Power Drift-Start : 0.129 W/kg  
Power Drift-Finish: 0.129 W/kg  
Power Drift (%) : 0.012  
Picture :



1 gram SAR value : 0.173 W/kg  
10 gram SAR value : 0.111 W/kg  
Area Scan Peak SAR : 0.148 W/kg  
Zoom Scan Peak SAR : 0.260 W/kg

■ 5785 MHz Only, EUT Position: Laptop

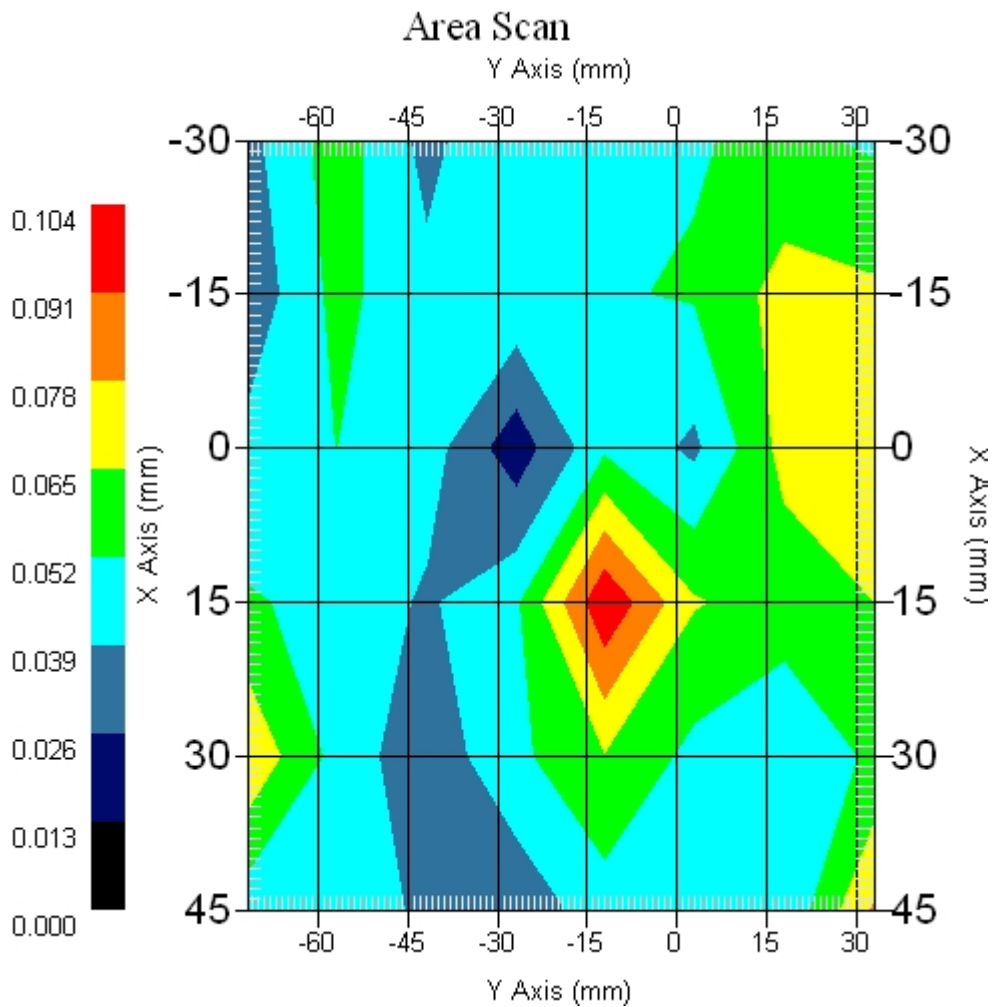
Measurement Data

Crest Factor : 1  
Scan Type : Complete  
Area Scan : 6x8x1 : Measurement x=15mm, y=15mm, z=4mm  
Zoom Scan : 9x9x13 : Measurement x=4mm, y=4mm, z=2.5mm

Other Data

DUT Position : Touch  
Separation : 0  
Channel : Mid - 5785MHz

Power Drift-Start : 0.061 W/kg  
Power Drift-Finish: 0.067 W/kg  
Power Drift (%) : 1.639  
Picture :



1 gram SAR value : 0.092 W/kg  
10 gram SAR value : 0.075 W/kg  
Area Scan Peak SAR : 0.104 W/kg  
Zoom Scan Peak SAR : 0.200 W/kg

■ **5785 MHz, EUT Position: Tablet, PL,836 GSM**

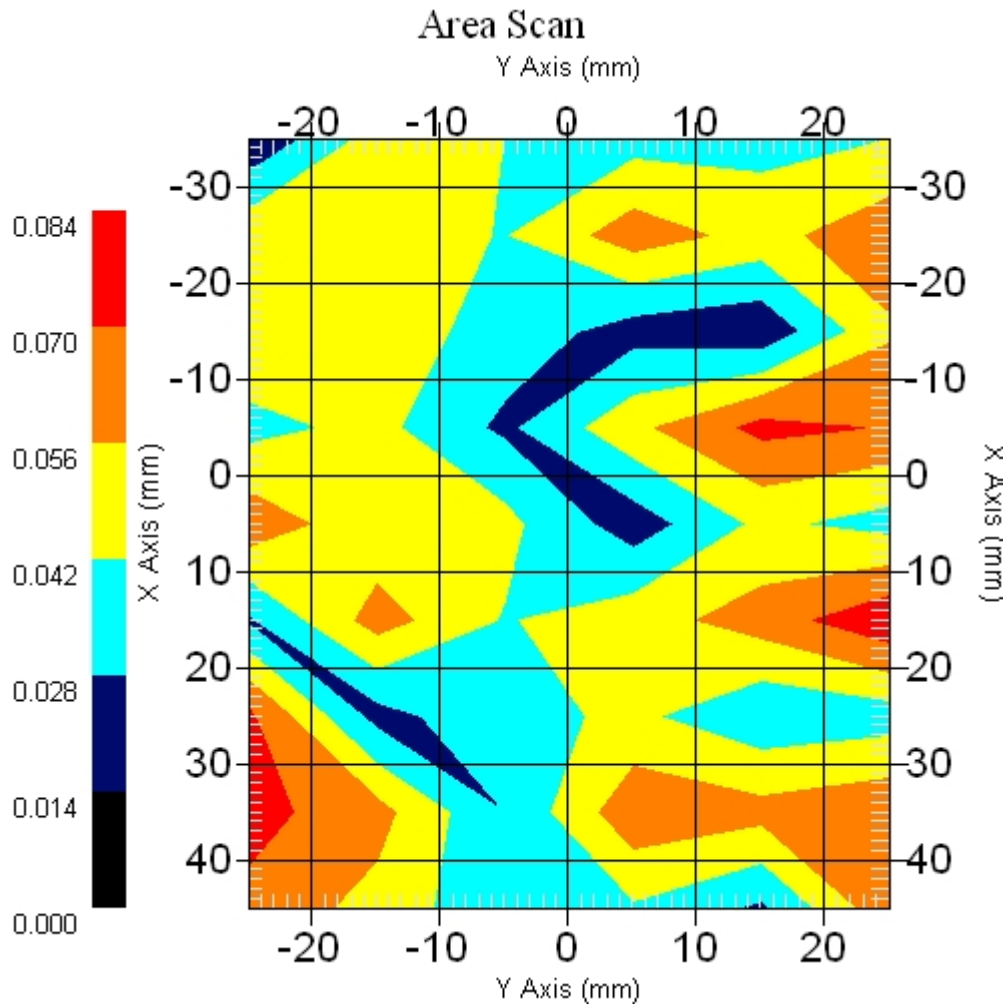
Measurement Data

Crest Factor : 1  
Scan Type : Complete  
Area Scan : 9x6x1 : Measurement x=10mm, y=10mm, z=4mm  
Zoom Scan : 9x9x13 : Measurement x=4mm, y=4mm, z=2.5mm

Other Data

DUT Position : Touch  
Separation : 0  
Channel : Mid - 5785MHz

Power Drift-Start : 0.050 W/kg  
Power Drift-Finish: 0.048 W/kg  
Power Drift (%) : -4.023  
Picture :



1 gram SAR value : 0.120 W/kg  
10 gram SAR value : 0.102 W/kg  
Area Scan Peak SAR : 0.081 W/kg  
Zoom Scan Peak SAR : 0.160 W/kg

■ 5785 MHz, EUT Position: Tablet, PP,836 GSM

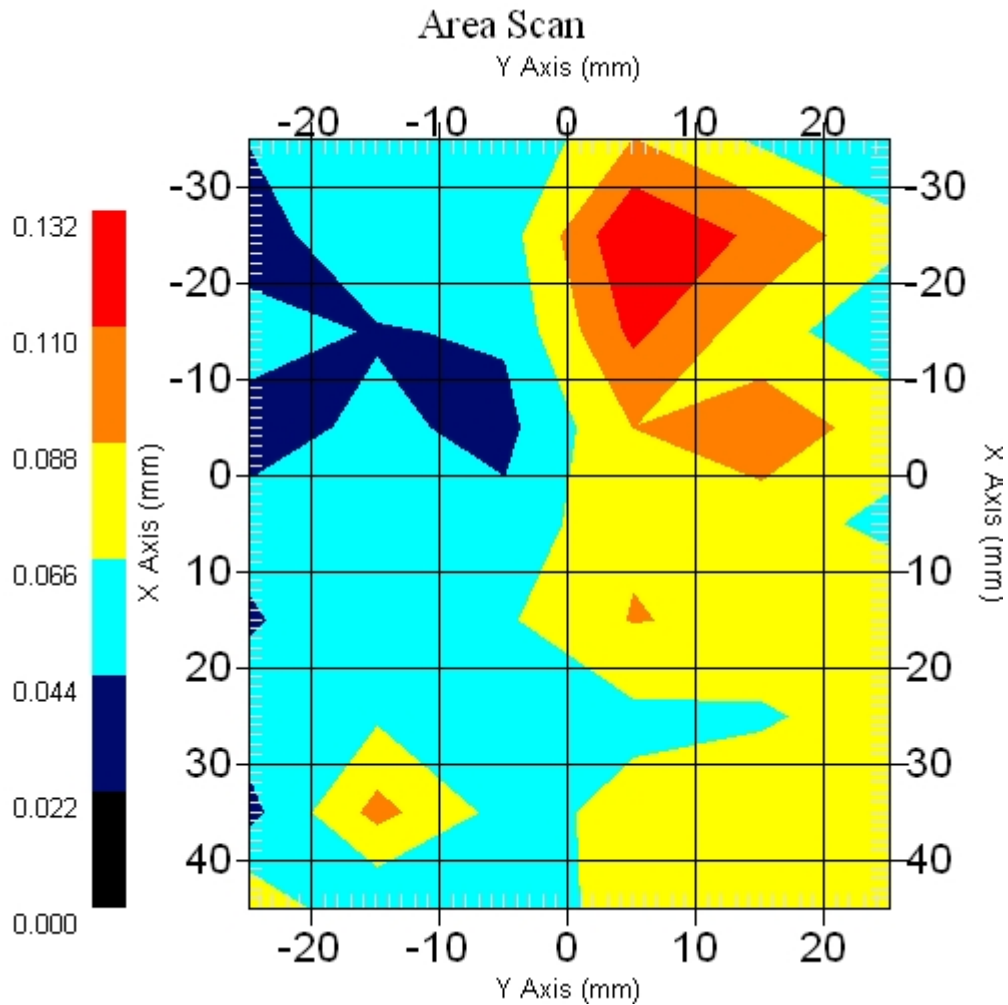
Measurement Data

Crest Factor : 1  
Scan Type : Complete  
Area Scan : 9x6x1 : Measurement x=10mm, y=10mm, z=4mm  
Zoom Scan : 9x9x13: Measurement x=4mm, y=4mm, z=2.5mm

Other Data

DUT Position : Touch  
Separation : 0  
Channel : Mid - 5785MHz

Power Drift-Start : 0.073 W/kg  
Power Drift-Finish: 0.074 W/kg  
Power Drift (%) : 1.369  
Picture :

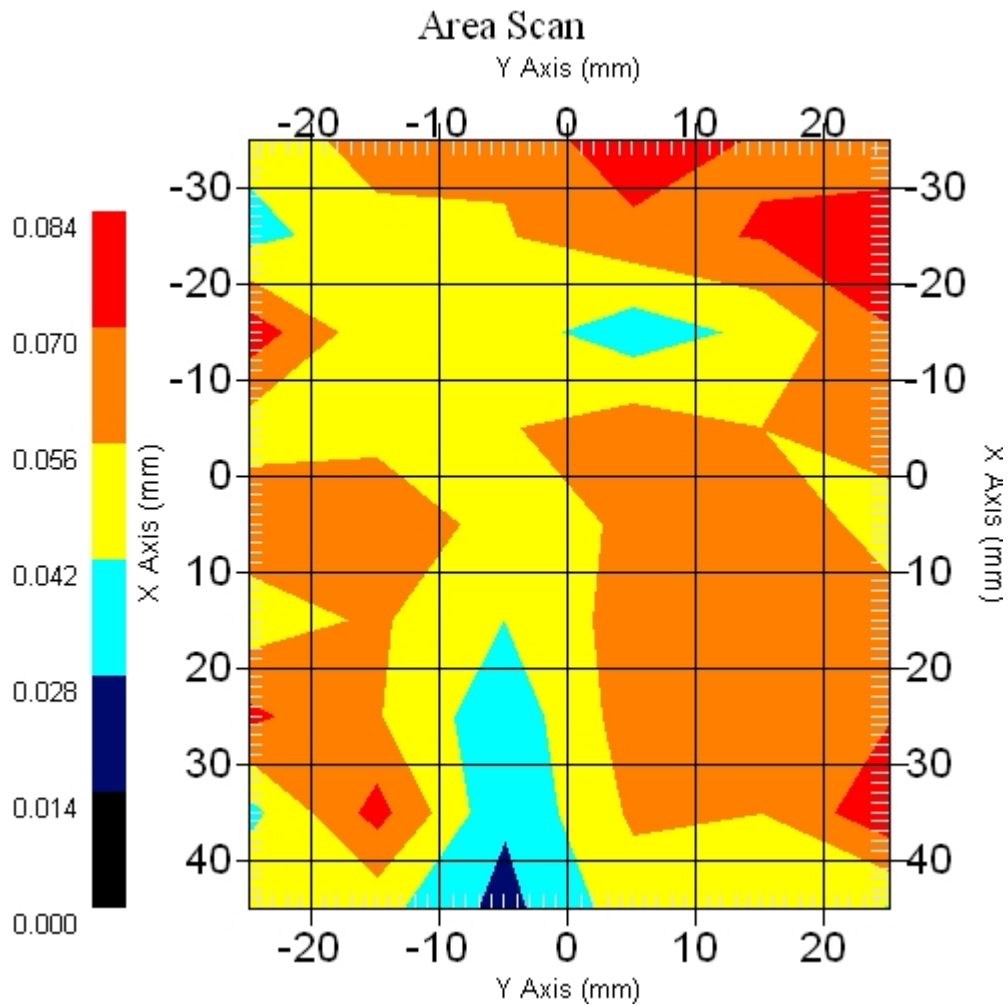


1 gram SAR value : 0.143 W/kg  
10 gram SAR value : 0.086 W/kg  
Area Scan Peak SAR : 0.131 W/kg  
Zoom Scan Peak SAR : 0.320 W/kg

■ 5785 MHz, EUT Position: Tablet, SL,836 GSM

Measurement Data

Crest Factor : 1  
Scan Type : Complete  
Area Scan : 9x6x1 : Measurement x=10mm, y=10mm, z=4mm  
Zoom Scan : 9x9x13 : Measurement x=4mm, y=4mm, z=2.5mm  
Other Data  
DUT Position : Touch  
Separation : 0  
Channel : Mid - 5785MHz  
Power Drift-Start : 0.062 W/kg  
Power Drift-Finish: 0.059 W/kg  
Power Drift (%) : -4.838  
Picture :



1 gram SAR value : 0.128 W/kg  
10 gram SAR value : 0.086 W/kg  
Area Scan Peak SAR : 0.082 W/kg  
Zoom Scan Peak SAR : 0.230 W/kg

■ **5785 MHz Only, EUT Position: Tablet, SP**

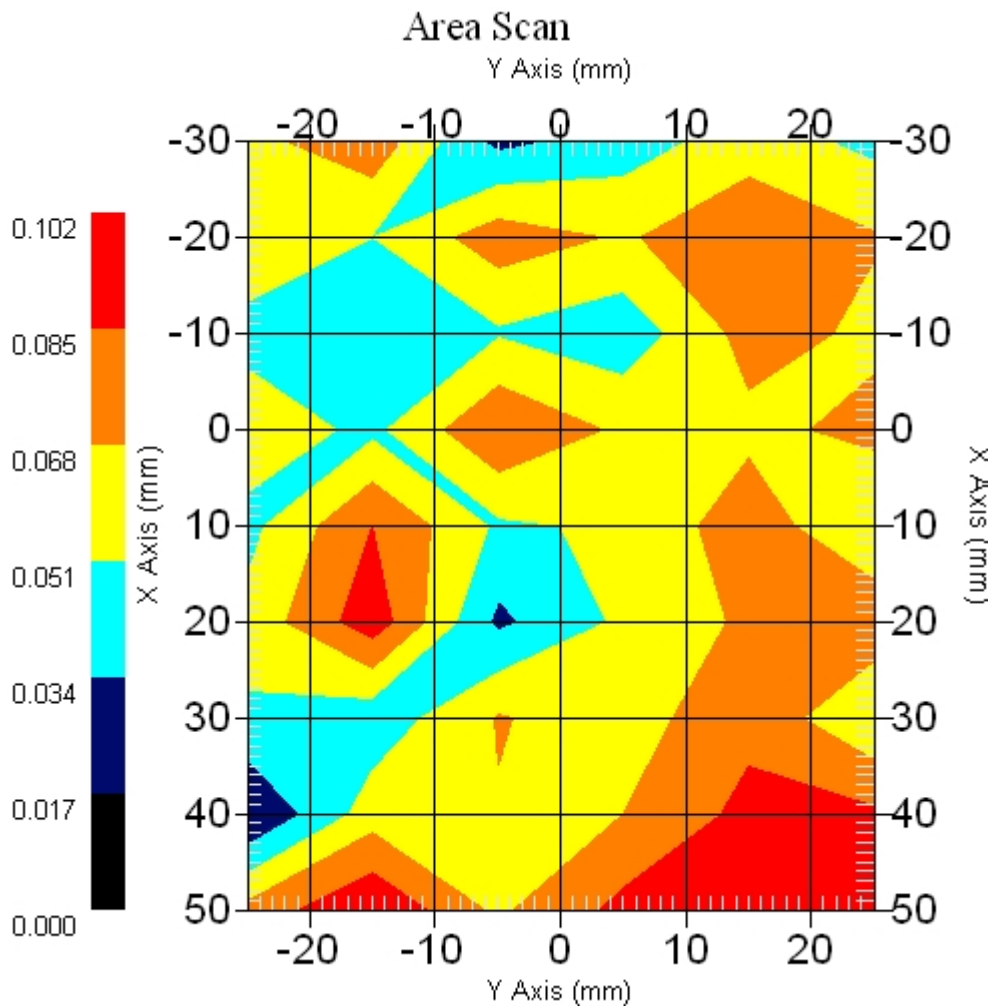
Measurement Data

Crest Factor : 1  
Scan Type : Complete  
Area Scan : 9x6x1 : Measurement x=10mm, y=10mm, z=4mm  
Zoom Scan : 9x9x13 : Measurement x=4mm, y=4mm, z=2.5mm

Other Data

DUT Position : Touch  
Separation : 0  
Channel : Mid - 5745MHz

Power Drift-Start : 0.096 W/kg  
Power Drift-Finish: 0.092 W/kg  
Power Drift (%) : -4.166  
Picture :



1 gram SAR value : 0.176 W/kg  
10 gram SAR value : 0.099 W/kg  
Area Scan Peak SAR : 0.101 W/kg  
Zoom Scan Peak SAR : 0.510 W/kg

■ **EUT Position: Tablet, SP, 836 GSM Only**

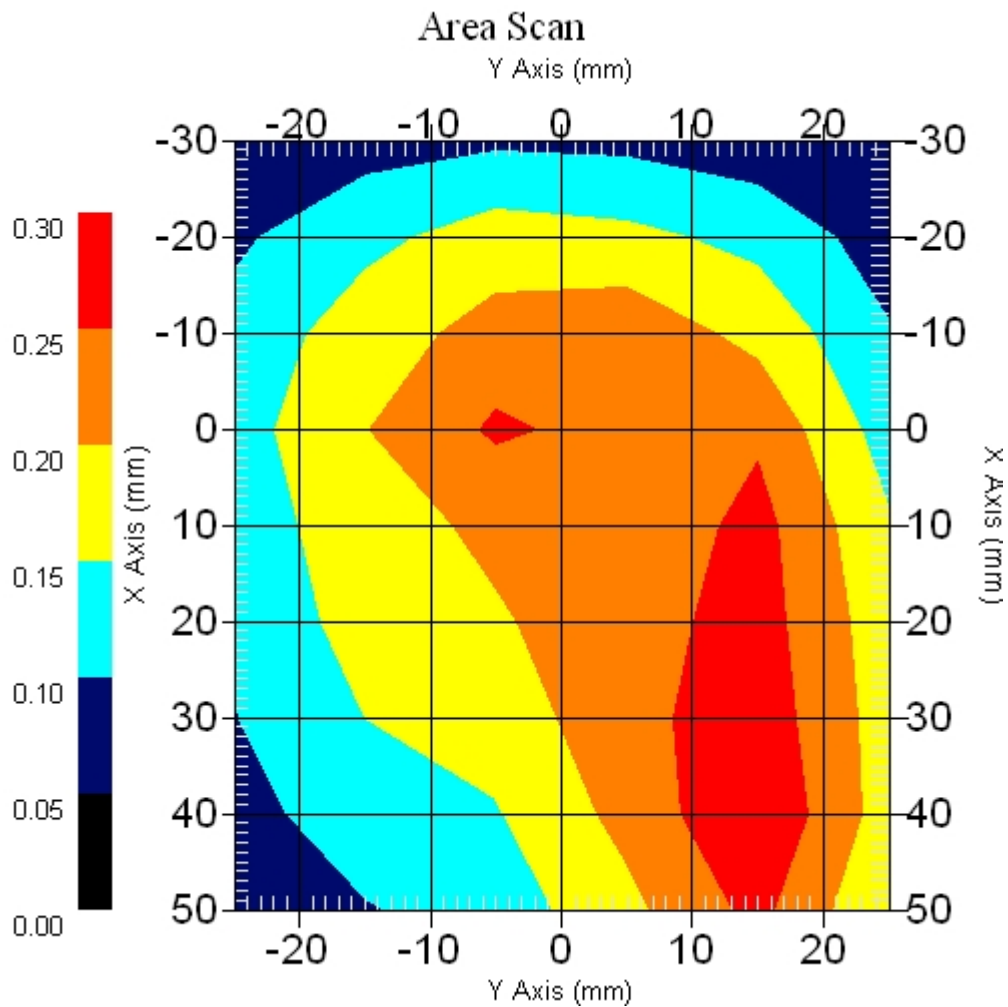
Measurement Data

Crest Factor : 1  
Scan Type : Complete  
Area Scan : 9x6x1 : Measurement x=10mm, y=10mm, z=4mm  
Zoom Scan : 9x9x13 : Measurement x=4mm, y=4mm, z=2.5mm

Other Data

DUT Position : Touch  
Separation : 0  
Channel : Mid - 850

Power Drift-Start : 0.249 W/kg  
Power Drift-Finish: 0.250 W/kg  
Power Drift (%) : 4.016  
Picture :



1 gram SAR value : 0.283 W/kg  
10 gram SAR value : 0.173 W/kg  
Area Scan Peak SAR : 0.298 W/kg  
Zoom Scan Peak SAR : 0.510 W/kg

■ **5785 MHz Only, EUT Position: Tablet, SP**

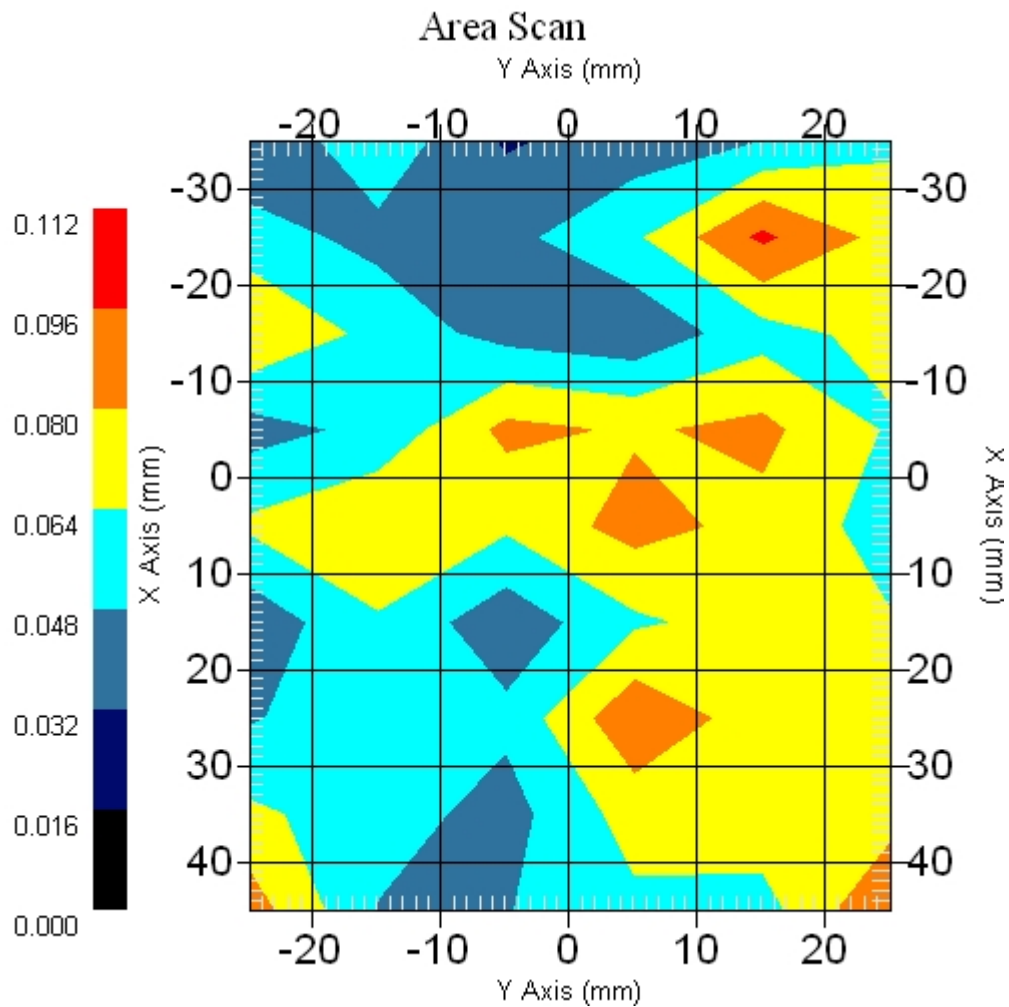
Measurement Data

Crest Factor : 1  
Scan Type : Complete  
Area Scan : 9x6x1 : Measurement x=10mm, y=10mm, z=4mm  
Zoom Scan : 9x9x13 : Measurement x=4mm, y=4mm, z=2.5mm

Other Data

DUT Position : Touch  
Separation : 0  
Channel : Mid - 5785MHz

Power Drift-Start : 0.069 W/kg  
Power Drift-Finish: 0.072 W/kg  
Power Drift (%) : 4.347  
Picture :



1 gram SAR value : 0.092 W/kg  
10 gram SAR value : 0.068 W/kg  
Area Scan Peak SAR : 0.099 W/kg  
Zoom Scan Peak SAR : 0.110 W/kg



■ **5785 MHz Only, EUT Position: Tablet, SP**

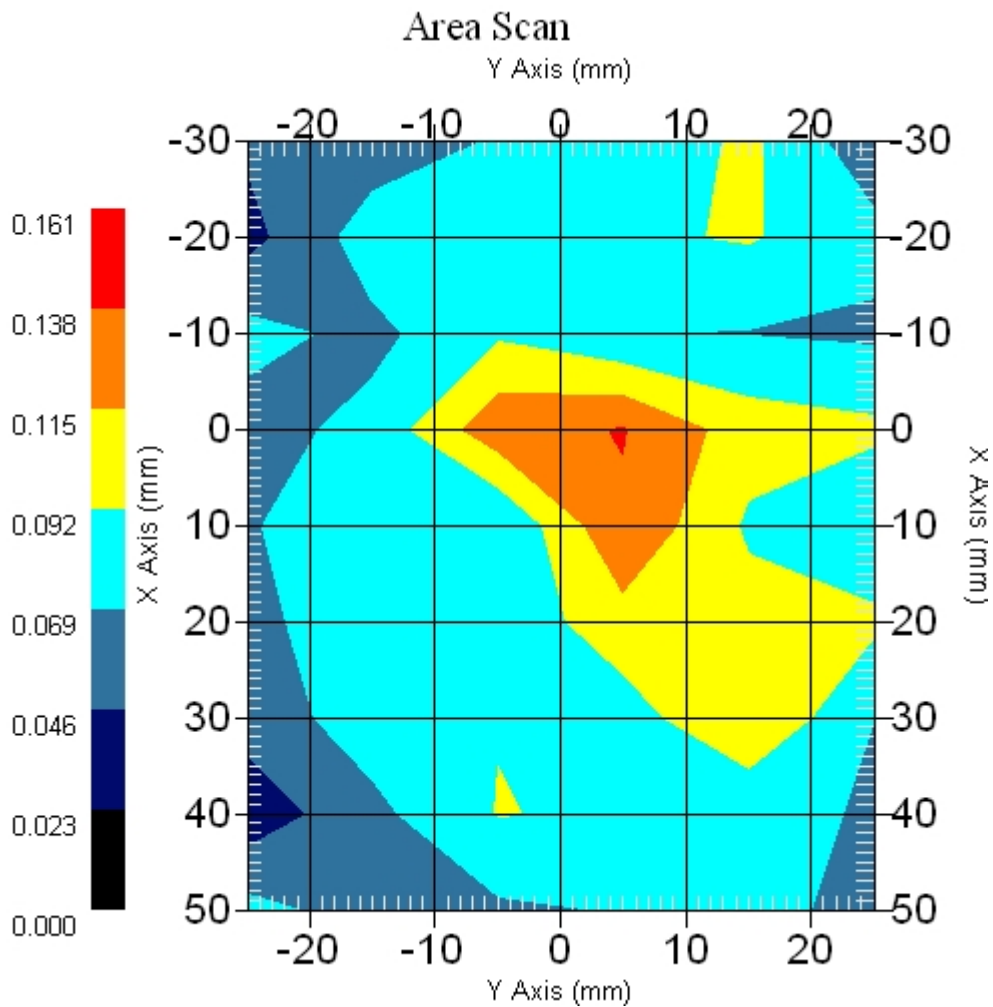
Measurement Data

Crest Factor : 1  
Scan Type : Complete  
Area Scan : 9x6x1 : Measurement x=10mm, y=10mm, z=4mm  
Zoom Scan : 9x9x13 : Measurement x=4mm, y=4mm, z=2.5mm

Other Data

DUT Position : Touch  
Separation : 0  
Channel : Mid - 5825MHz

Power Drift-Start : 0.093 W/kg  
Power Drift-Finish: 0.089 W/kg  
Power Drift (%) : -4.301  
Picture :



1 gram SAR value : 0.120 W/kg  
10 gram SAR value : 0.097 W/kg  
Area Scan Peak SAR : 0.139 W/kg  
Zoom Scan Peak SAR : 0.300 W/kg

■ **5785 MHz, EUT Position: Laptop, 836 EGSM**

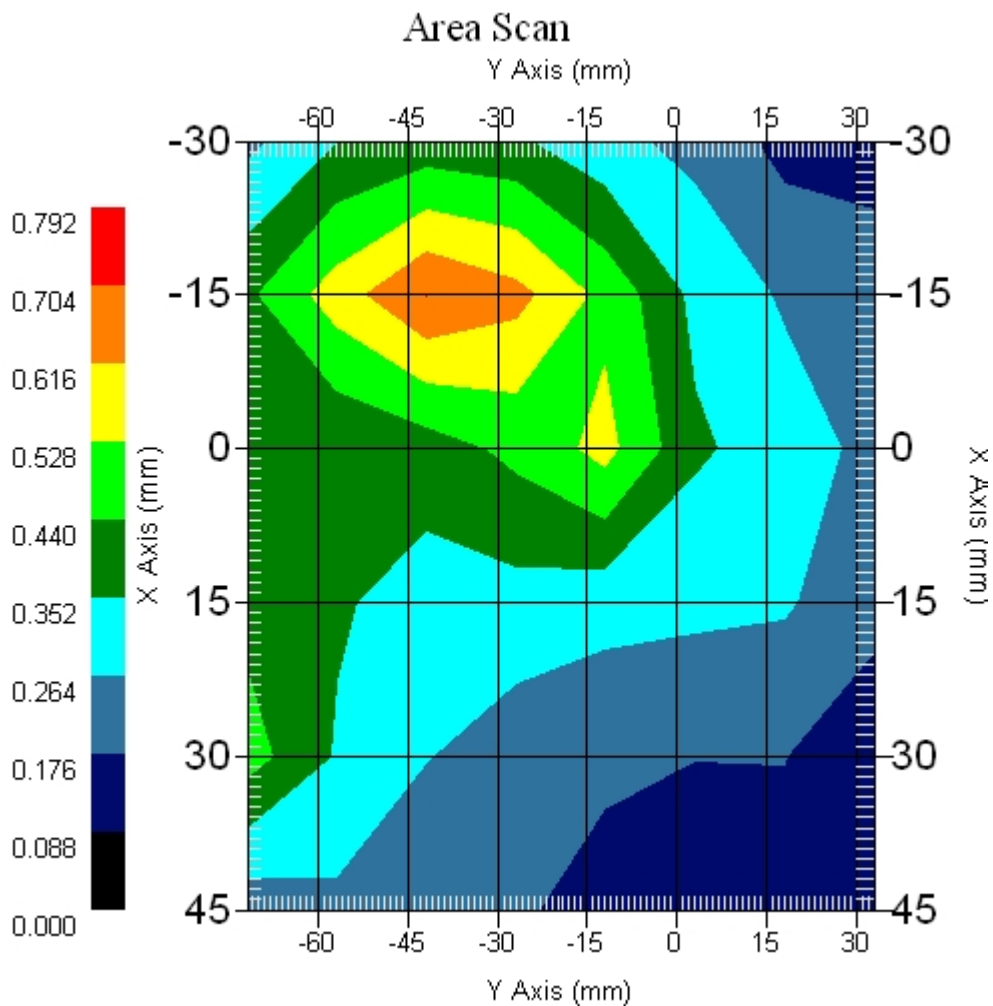
Measurement Data

Crest Factor : 1  
Scan Type : Complete  
Area Scan : 6x8x1 : Measurement x=15mm, y=15mm, z=4mm  
Zoom Scan : 9x9x13 : Measurement x=4mm, y=4mm, z=2.5mm

Other Data

DUT Position : Touch  
Separation : 0  
Channel : Mid - 5785MHz

Power Drift-Start : 0.361 W/kg  
Power Drift-Finish: 0.371 W/kg  
Power Drift (%) : 2.711  
Picture :



1 gram SAR value : 0.702 W/kg  
10 gram SAR value : 0.501 W/kg  
Area Scan Peak SAR : 0.706 W/kg  
Zoom Scan Peak SAR : 1.020 W/kg

■ 5785 MHz, EUT Position: Laptop, 836 EGSM

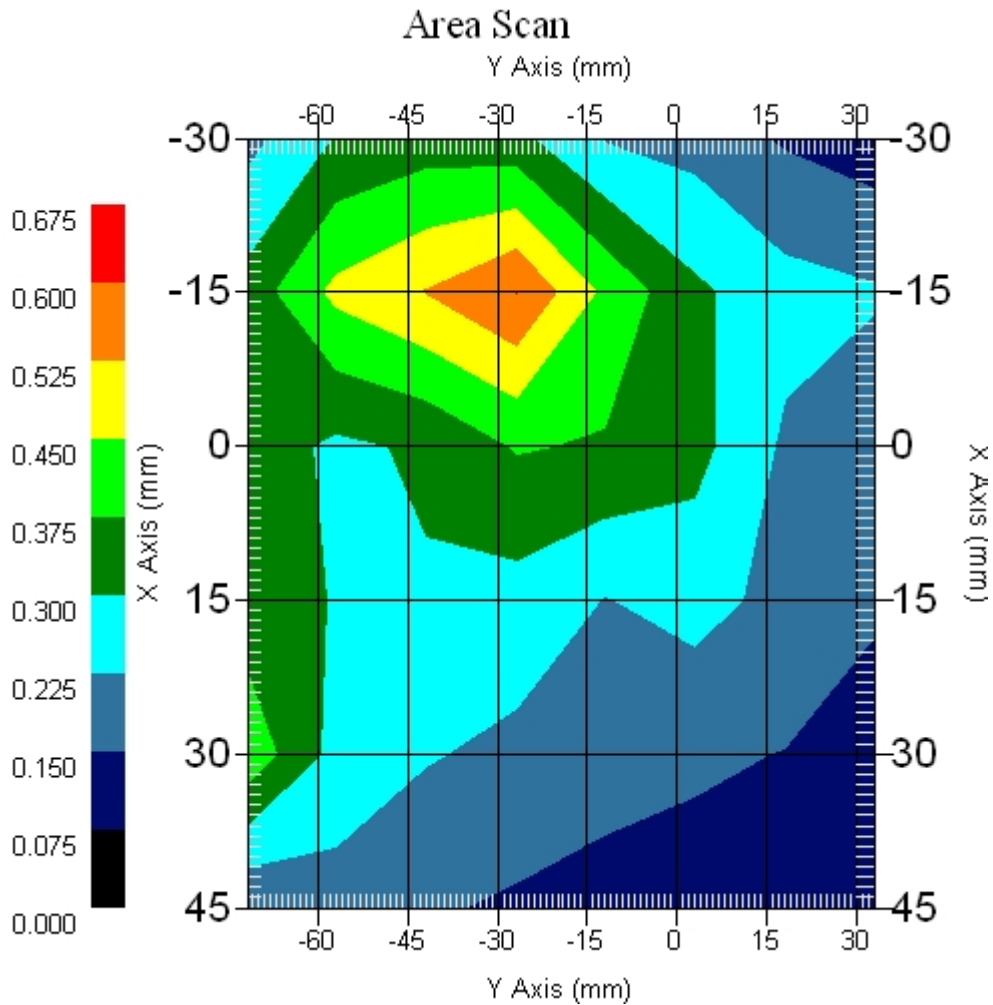
Measurement Data

Crest Factor : 1  
Scan Type : Complete  
Area Scan : 6x8x1 : Measurement x=15mm, y=15mm, z=4mm  
Zoom Scan : 9x9x13 : Measurement x=4mm, y=4mm, z=2.5mm

Other Data

DUT Position : Touch  
Separation : 0  
Channel : Mid - 5785MHz

Power Drift-Start : 0.312 W/kg  
Power Drift-Finish: 0.313 W/kg  
Power Drift (%) : 3.205  
Picture :



1 gram SAR value : 0.532 W/kg  
10 gram SAR value : 0.379 W/kg  
Area Scan Peak SAR : 0.601 W/kg  
Zoom Scan Peak SAR : 0.870 W/kg

■ **5785 MHz, EUT Position: Tablet, PL, 836 EGSM**

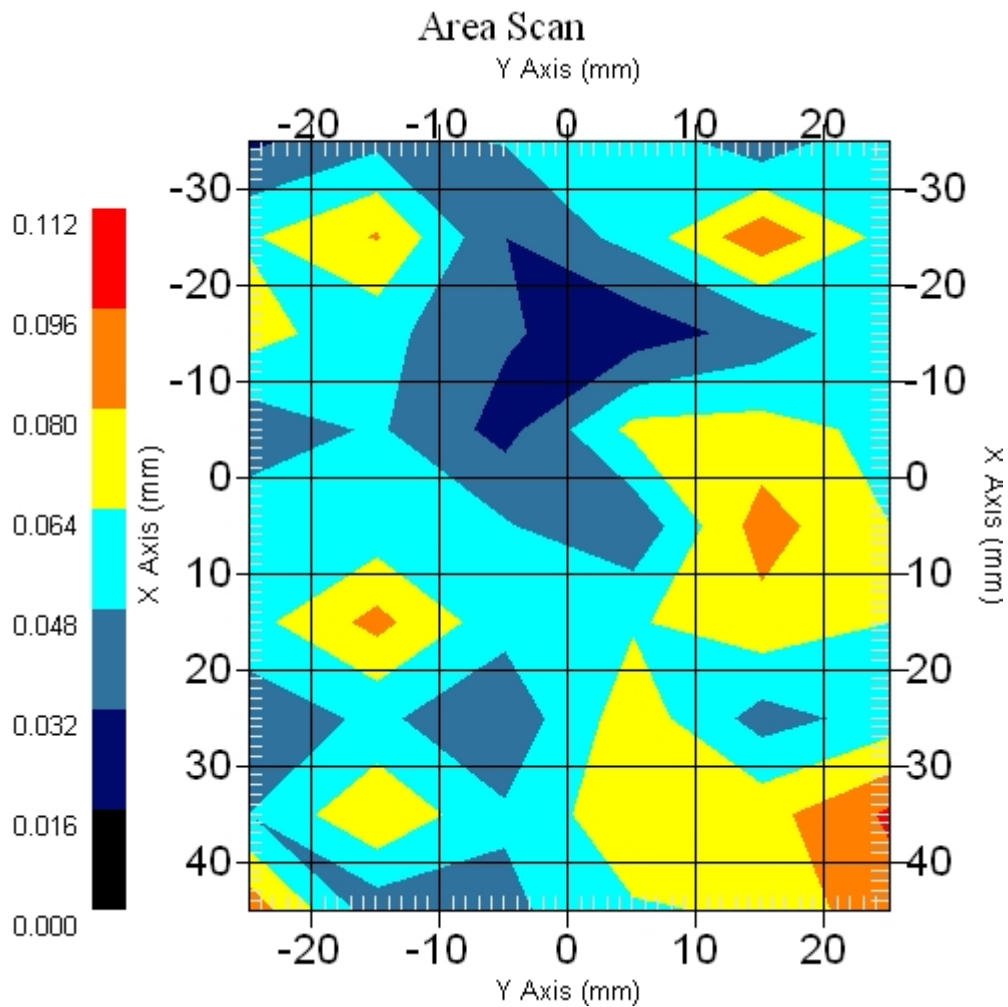
Measurement Data

Crest Factor : 1  
Scan Type : Complete  
Area Scan : 9x6x1 : Measurement x=10mm, y=10mm, z=4mm  
Zoom Scan : 9x9x13 : Measurement x=4mm, y=4mm, z=2.5mm

Other Data

DUT Position : Touch  
Separation : 0  
Channel : Mid - 5785MHz

Power Drift-Start : 0.099 W/kg  
Power Drift-Finish: 0.101 W/kg  
Power Drift (%) : 2.020  
Picture :



1 gram SAR value : 0.135 W/kg  
10 gram SAR value : 0.101 W/kg  
Area Scan Peak SAR : 0.098 W/kg  
Zoom Scan Peak SAR : 0.190 W/kg

■ 5785 MHz, EUT Position: Tablet, PP, 836 EGSM

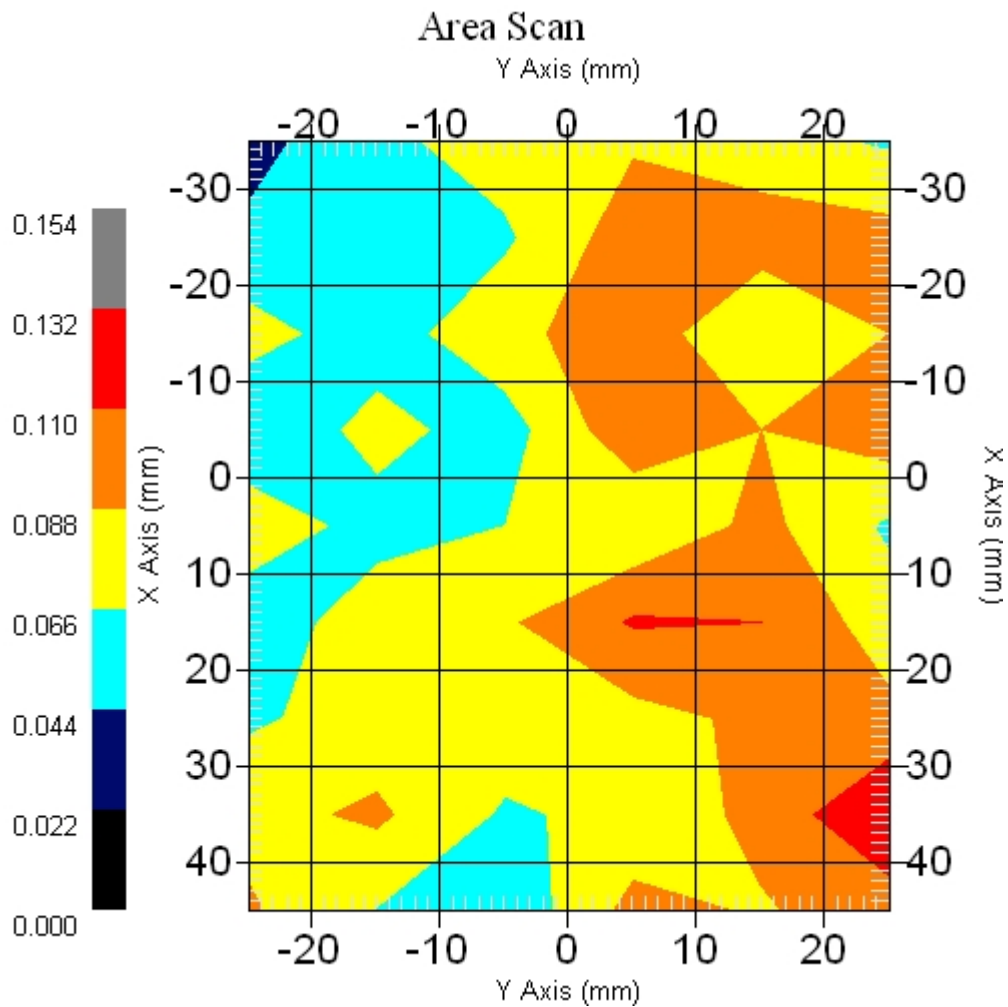
Measurement Data

Crest Factor : 1  
Scan Type : Complete  
Area Scan : 9x6x1 : Measurement x=10mm, y=10mm, z=4mm  
Zoom Scan : 9x9x13 : Measurement x=4mm, y=4mm, z=2.5mm

Other Data

DUT Position : Touch  
Separation : 0  
Channel : Mid - 5785

Power Drift-Start : 0.085 W/kg  
Power Drift-Finish: 0.082 W/kg  
Power Drift (%) : -3.633  
Picture :



1 gram SAR value : 0.189 W/kg  
10 gram SAR value : 0.134 W/kg  
Area Scan Peak SAR : 0.132 W/kg  
Zoom Scan Peak SAR : 0.430 W/kg

■ 5785 MHz, EUT Position: Tablet, SL, 836 EGSM

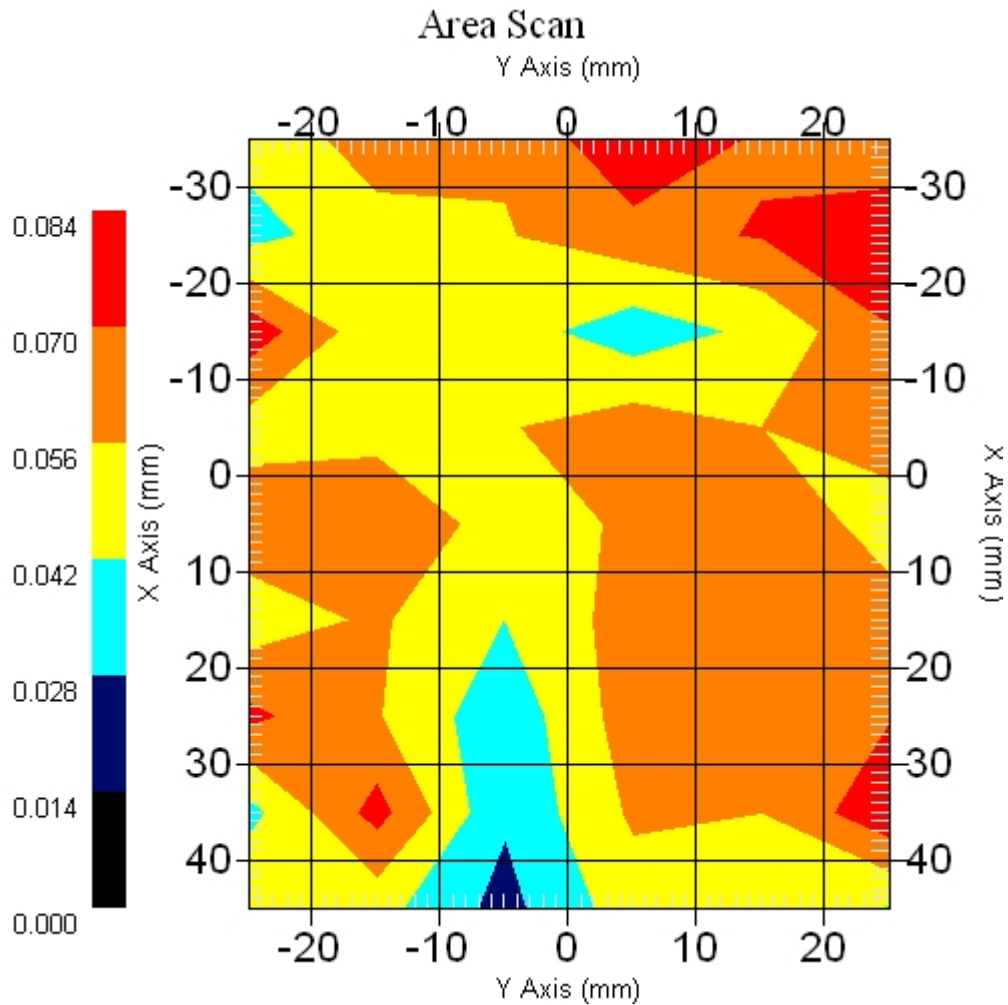
Measurement Data

Crest Factor : 1  
Scan Type : Complete  
Area Scan : 9x6x1 : Measurement x=10mm, y=10mm, z=4mm  
Zoom Scan : 9x9x13 : Measurement x=4mm, y=4mm, z=2.5mm

Other Data

DUT Position : Touch  
Separation : 0  
Channel : Mid - 5785MHz

Power Drift-Start : 0.062 W/kg  
Power Drift-Finish: 0.059 W/kg  
Power Drift (%) : -4.838  
Picture :



1 gram SAR value : 0.128 W/kg  
10 gram SAR value : 0.086 W/kg  
Area Scan Peak SAR : 0.082 W/kg  
Zoom Scan Peak SAR : 0.230 W/kg