

■ **5260 MHz, EUT Position: Tablet, PP, 836 GSM**

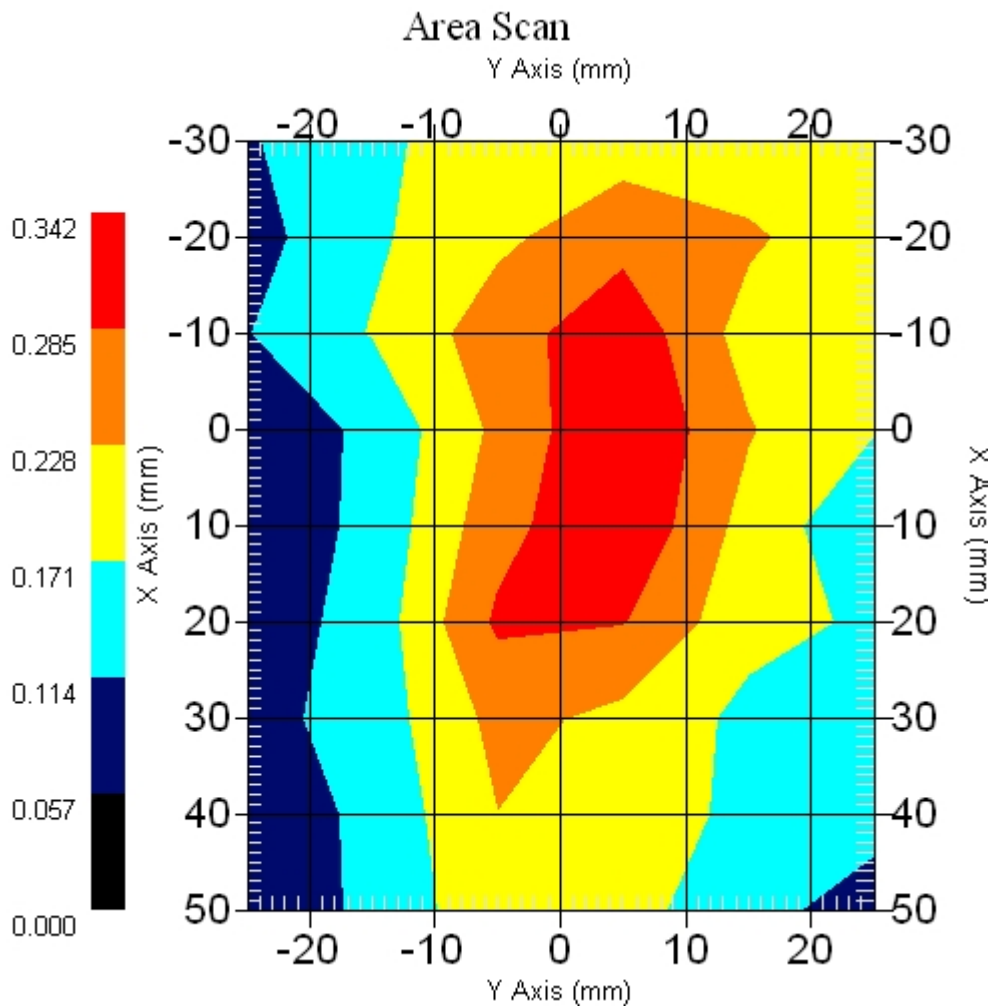
Measurement Data

Crest Factor : 1
Scan Type : Complete
Area Scan : 9x6x1 : Measurement x=10mm, y=10mm, z=4mm
Zoom Scan : 9x9x13 : Measurement x=4mm, y=4mm, z=2.5mm

Other Data

DUT Position : Touch
Separation : 0
Channel : Mid - 5260MHz

Power Drift-Start : 0.330 W/kg
Power Drift-Finish: 0.346 W/kg
Power Drift (%) : 4.848
Picture :



1 gram SAR value : 0.336 W/kg
10 gram SAR value : 0.235 W/kg
Area Scan Peak SAR : 0.342 W/kg
Zoom Scan Peak SAR : 0.540 W/kg

■ **5260 MHz, EUT Position: Tablet, SL, 836 GSM**

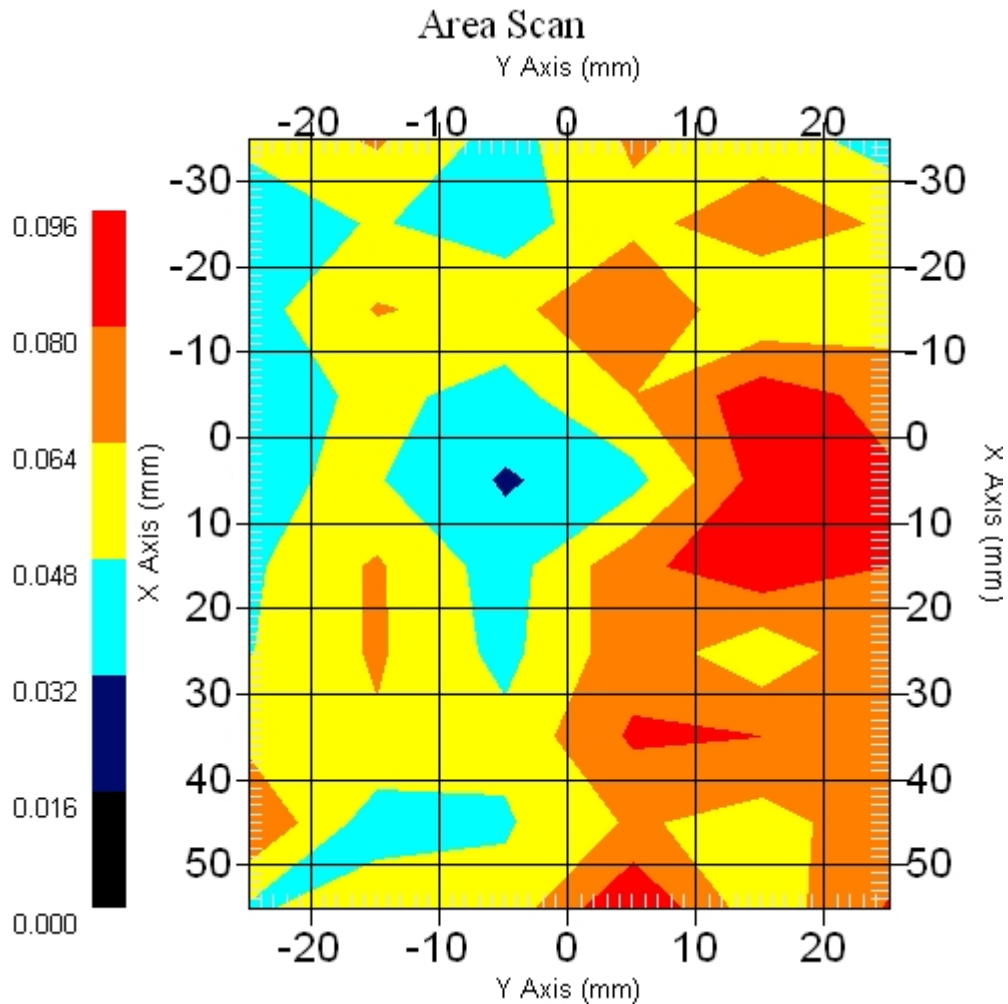
Measurement Data

Crest Factor : 1
 Scan Type : Complete
 Area Scan : 10x6x1 : Measurement x=10mm, y=10mm, z=4mm
 Zoom Scan : 9x9x13 : Measurement x=4mm, y=4mm, z=2.5mm

Other Data

DUT Position : Touch
 Separation : 0
 Channel : Mid - 5260

Power Drift-Start : 0.073 W/kg
 Power Drift-Finish: 0.076 W/kg
 Power Drift (%) : 4.109
 Picture :



1 gram SAR value : 0.108 W/kg
 10 gram SAR value : 0.087 W/kg
 Area Scan Peak SAR : 0.096 W/kg
 Zoom Scan Peak SAR : 0.310 W/kg

■ 5260 MHz Only, EUT Position: Tablet, SP, 836 GSM

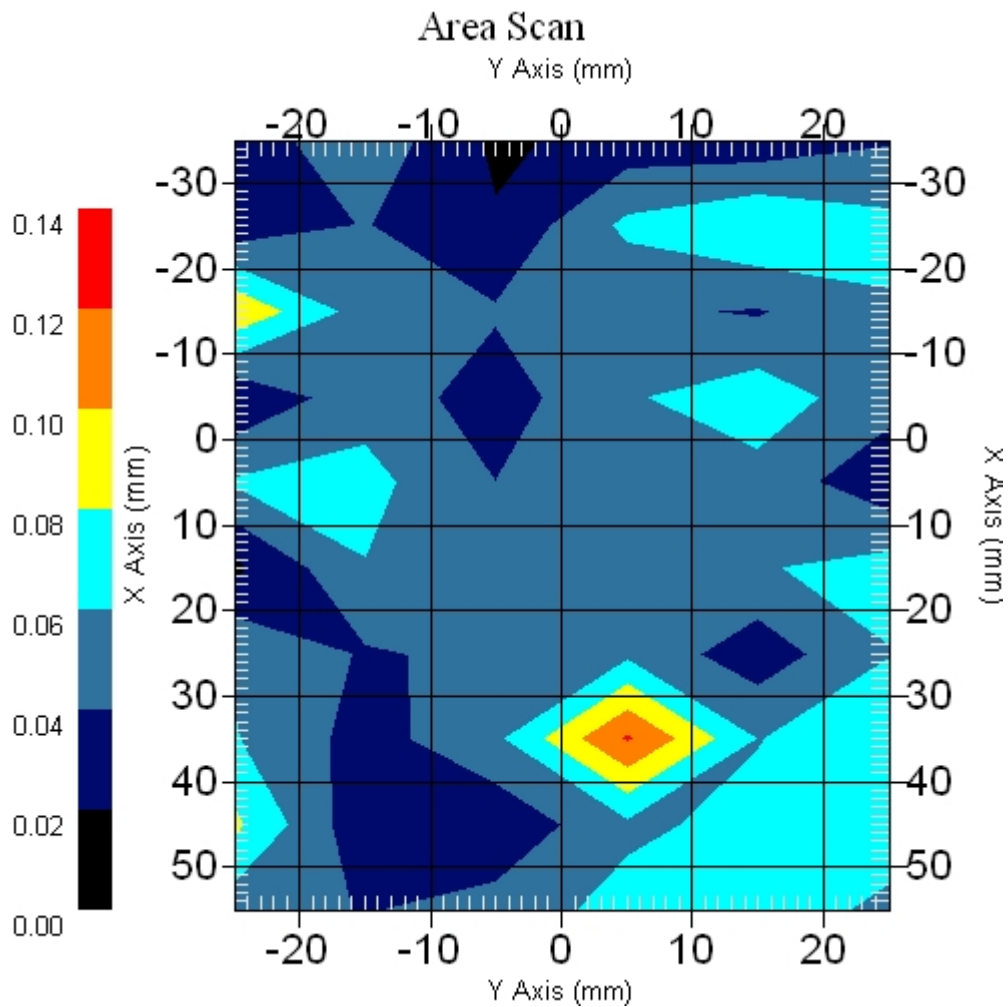
Measurement Data

Crest Factor : 1
Scan Type : Complete
Area Scan : 10x6x1 : Measurement x=10mm, y=10mm, z=4mm
Zoom Scan : 9x9x13 : Measurement x=4mm, y=4mm, z=2.5mm

Other Data

DUT Position : Touch
Separation : 0
Channel : Mid - 5260

Power Drift-Start : 0.059 W/kg
Power Drift-Finish: 0.057 W/kg
Power Drift (%) : -3.389
Picture :



1 gram SAR value : 0.086 W/kg
10 gram SAR value : 0.081 W/kg
Area Scan Peak SAR : 0.122 W/kg
Zoom Scan Peak SAR : 0.170 W/kg

■ **EUT Position: Tablet, SP, 836 GSM Only**

Measurement Data

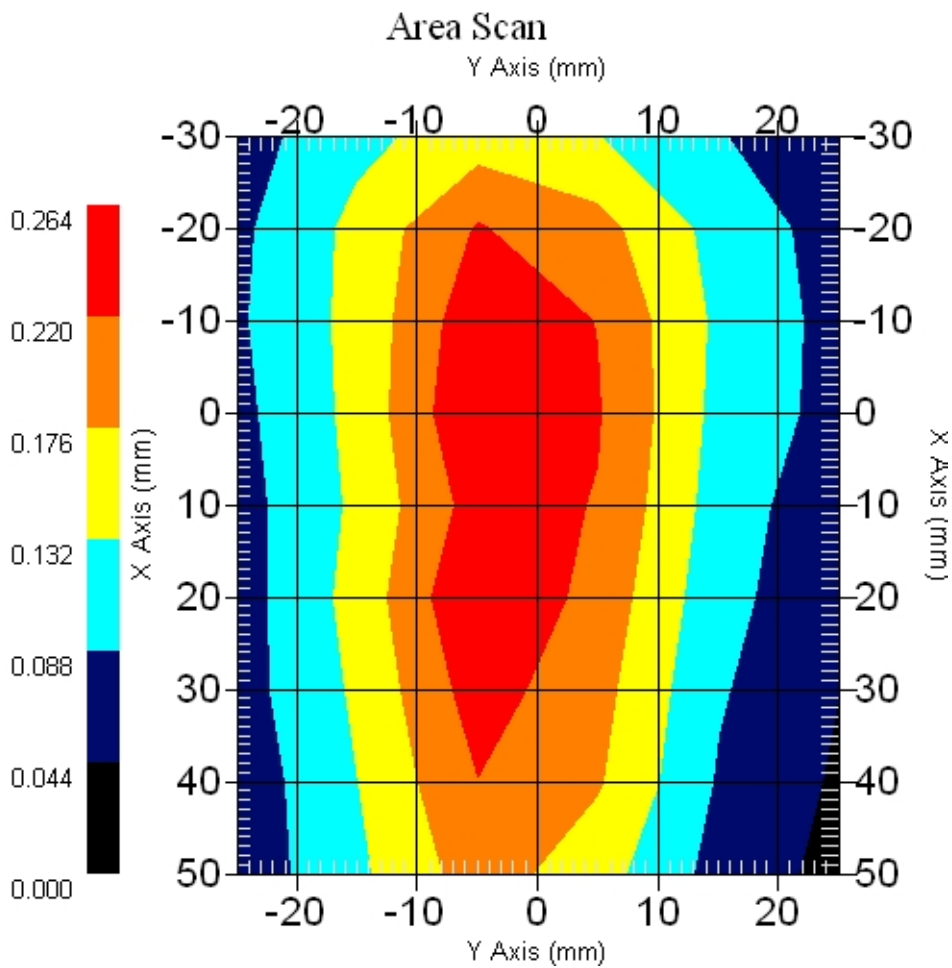
Crest Factor : 1
Scan Type : Complete
Area Scan : 9x6x1 : Measurement x=10mm, y=10mm, z=4mm
Zoom Scan : 5x5x8 : Measurement x=8mm, y=8mm, z=4mm

Other Data

DUT Position : 15° Tilt
Separation : 0
Channel : Mid - 698

Power Drift-Start : 0.266 W/kg
Power Drift-Finish: 0.261 W/kg
Power Drift (%) : -1.879

Picture :



1 gram SAR value : 0.242 W/kg
10 gram SAR value : 0.151 W/kg
Area Scan Peak SAR : 0.263 W/kg
Zoom Scan Peak SAR : 0.400 W/kg

■ **5260 MHz, EUT Position: Laptop, 836 GSM**

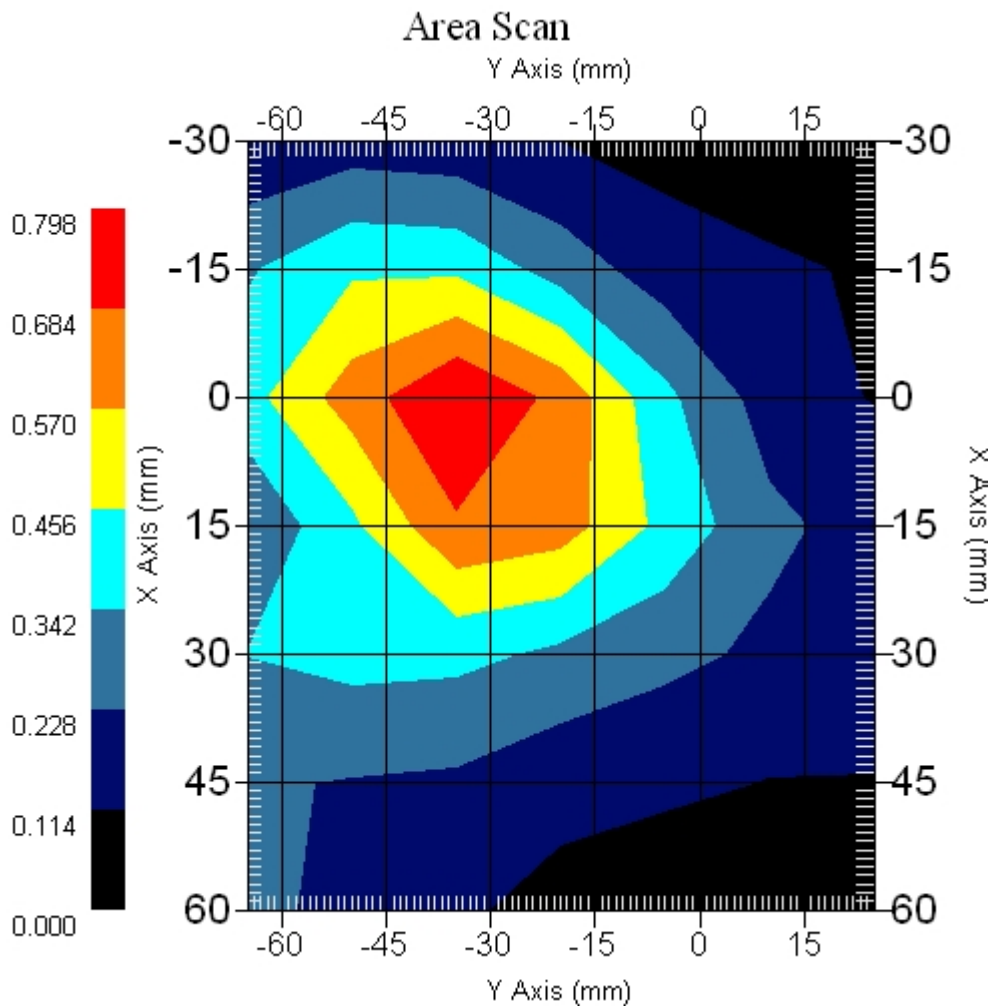
Measurement Data

Crest Factor : 1
Scan Type : Complete
Area Scan : 7x7x1 : Measurement x=15mm, y=15mm, z=4mm
Zoom Scan : 9x9x13 : Measurement x=4mm, y=4mm, z=2.5mm

Other Data

DUT Position : Touch
Separation : 0
Channel : Mid - 5260MHz

Power Drift-Start : 0.288 W/kg
Power Drift-Finish: 0.302 W/kg
Power Drift (%) : 4.861
Picture :

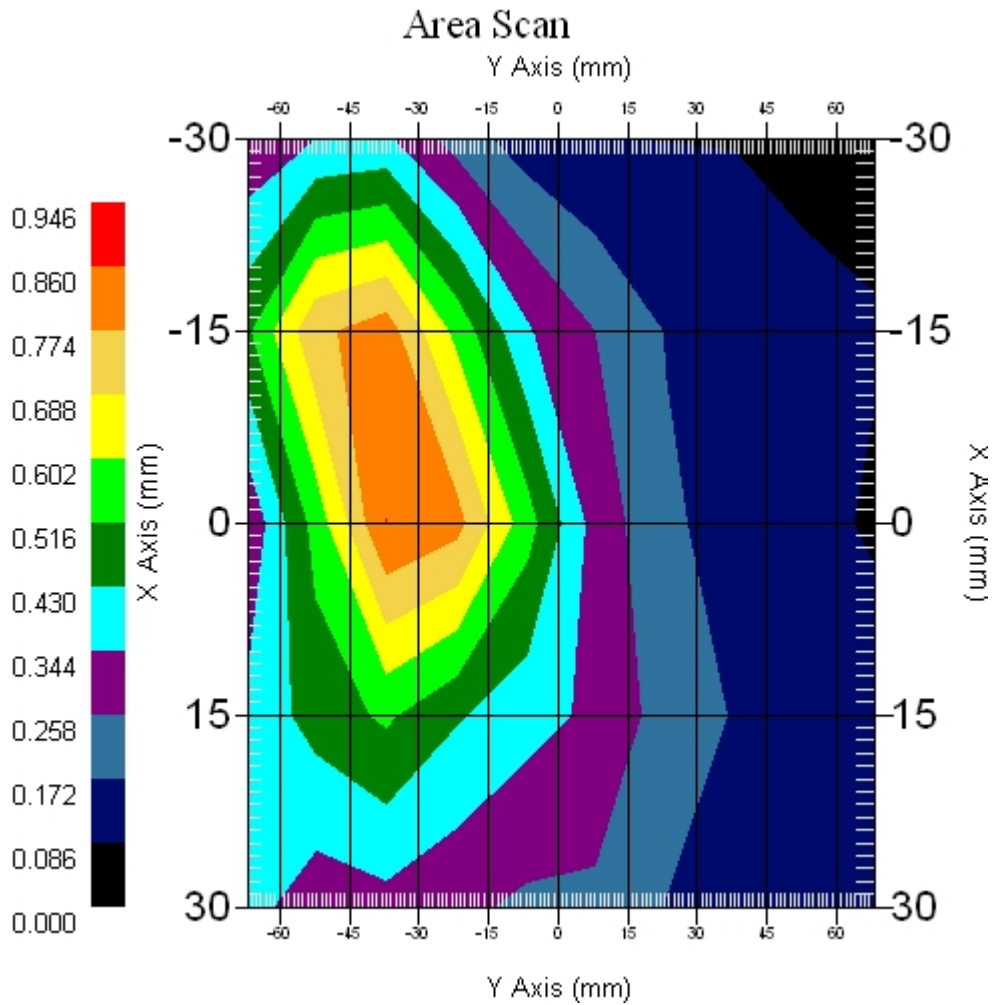


1 gram SAR value : 0.773 W/kg
10 gram SAR value : 0.575 W/kg
Area Scan Peak SAR : 0.798 W/kg
Zoom Scan Peak SAR : 1.191 W/kg

■ **5260 MHz, EUT Position: Laptop, 836 GSM**

Measurement Data

Crest Factor : 1
Scan Type : Complete
Area Scan : 5x10x1 : Measurement x=15mm, y=15mm, z=4mm
Zoom Scan : 9x9x13 : Measurement x=4mm, y=4mm, z=2.5mm
Other Data
DUT Position : Touch
Separation : 0
Channel : Mid - 5260MHz
Power Drift-Start : 0.440 W/kg
Power Drift-Finish: 0.457 W/kg
Power Drift (%) : 3.863
Picture :



1 gram SAR value : 0.926 W/kg
10 gram SAR value : 0.671 W/kg
Area Scan Peak SAR : 0.861 W/kg
Zoom Scan Peak SAR : 1.571 W/kg

■ **5260 MHz, EUT Position: Tablet, PL, 836 EGSM**

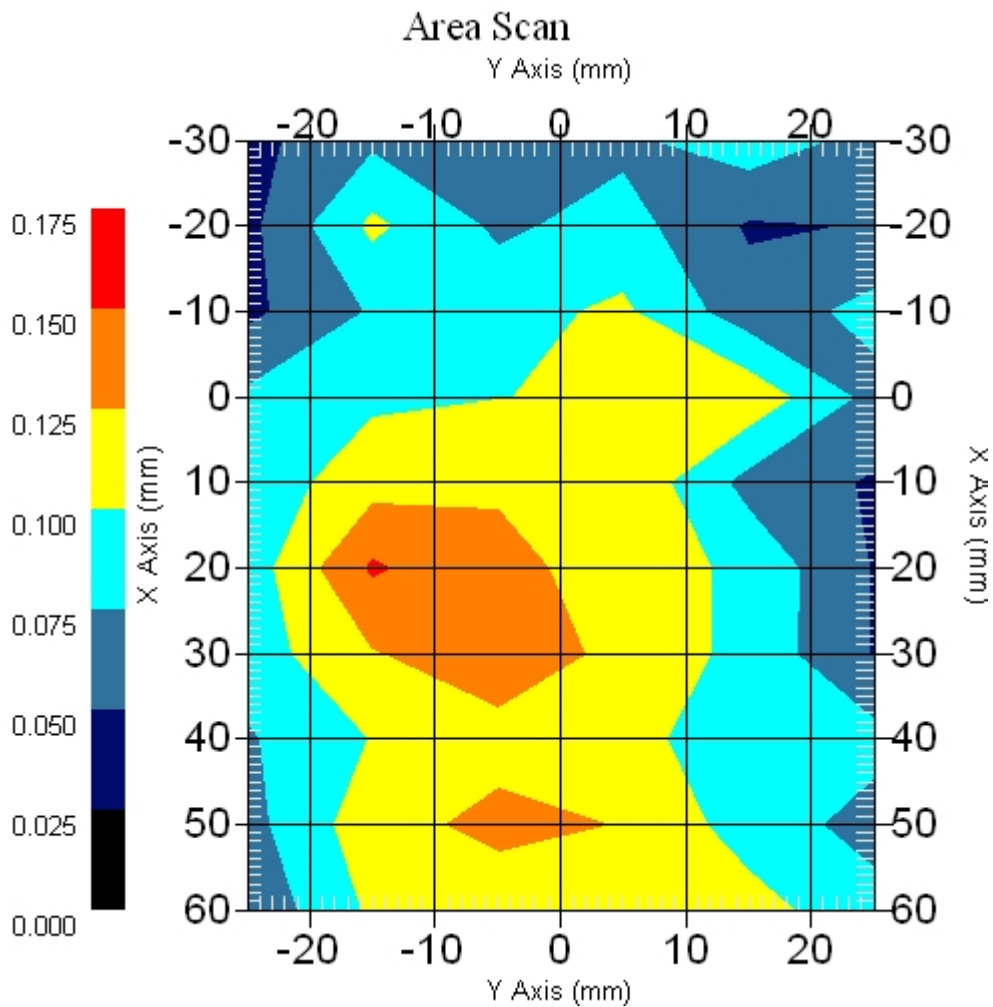
Measurement Data

Crest Factor : 1
Scan Type : Complete
Area Scan : 10x6x1 : Measurement x=10mm, y=10mm, z=4mm
Zoom Scan : 9x9x13 : Measurement x=4mm, y=mm, z=3mm

Other Data

DUT Position : Touch
Separation : 0
Channel : Mid - 5260MHz

Power Drift-Start : 0.150 W/kg
Power Drift-Finish: 0.157 W/kg
Power Drift (%) : 4.666
Picture :



1 gram SAR value : 0.123 W/kg
10 gram SAR value : 0.113 W/kg
Area Scan Peak SAR : 0.153 W/kg
Zoom Scan Peak SAR : 0.192 W/kg

■ **5260 MHz, EUT Position: Tablet, PP, 836 EGSM**

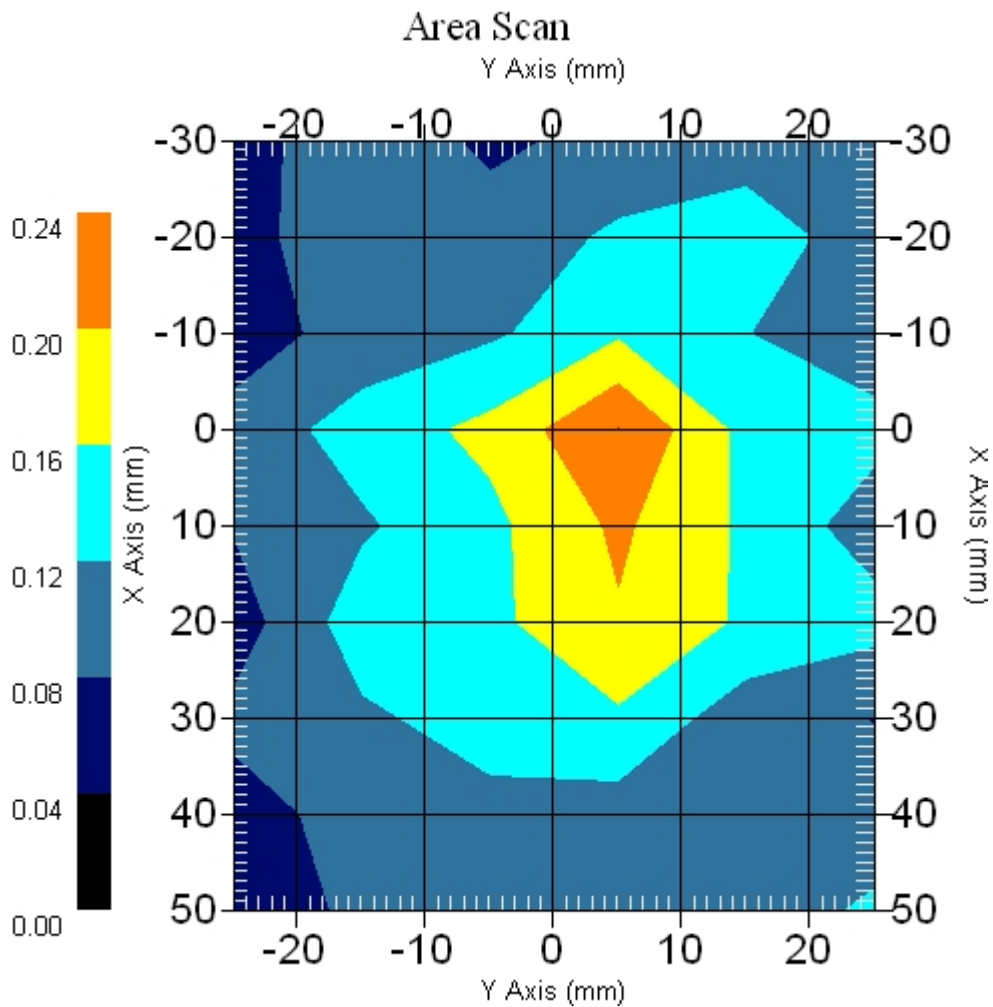
Measurement Data

Crest Factor : 1
Scan Type : Complete
Area Scan : 9x6x1 : Measurement x=10mm, y=10mm, z=4mm
Zoom Scan : 9x9x13 : Measurement x=4mm, y=4mm, z=2.5mm

Other Data

DUT Position : Touch
Separation : 0
Channel : Mid - 5260MHz

Power Drift-Start : 0.217 W/kg
Power Drift-Finish: 0.226 W/kg
Power Drift (%) : 3.947
Picture :



1 gram SAR value : 0.212 W/kg
10 gram SAR value : 0.144 W/kg
Area Scan Peak SAR : 0.240 W/kg
Zoom Scan Peak SAR : 0.410 W/kg

■ 5260 MHz, EUT Position: Tablet, SL, 836 EGSM

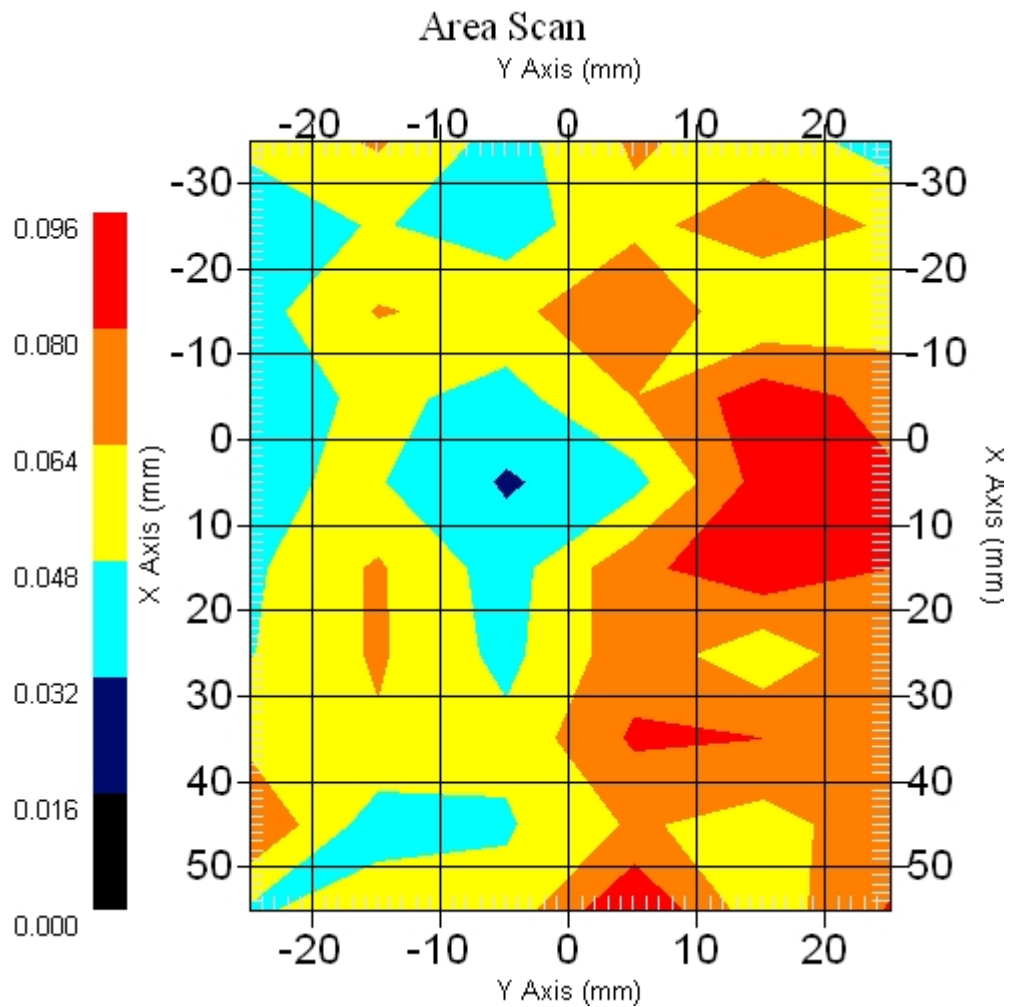
Measurement Data

Crest Factor : 1
Scan Type : Complete
Area Scan : 10x6x1 : Measurement x=10mm, y=10mm, z=4mm
Zoom Scan : 9x9x13 : Measurement x=4mm, y=4mm, z=2.5mm

Other Data

DUT Position : Touch
Separation : 0
Channel : Mid - 5260

Power Drift-Start : 0.073 W/kg
Power Drift-Finish: 0.076 W/kg
Power Drift (%) : 4.109
Picture :



1 gram SAR value : 0.108 W/kg
10 gram SAR value : 0.087 W/kg
Area Scan Peak SAR : 0.096 W/kg
Zoom Scan Peak SAR : 0.310 W/kg

■ 5260 MHz, EUT Position: Tablet, SP, 836 EGSM

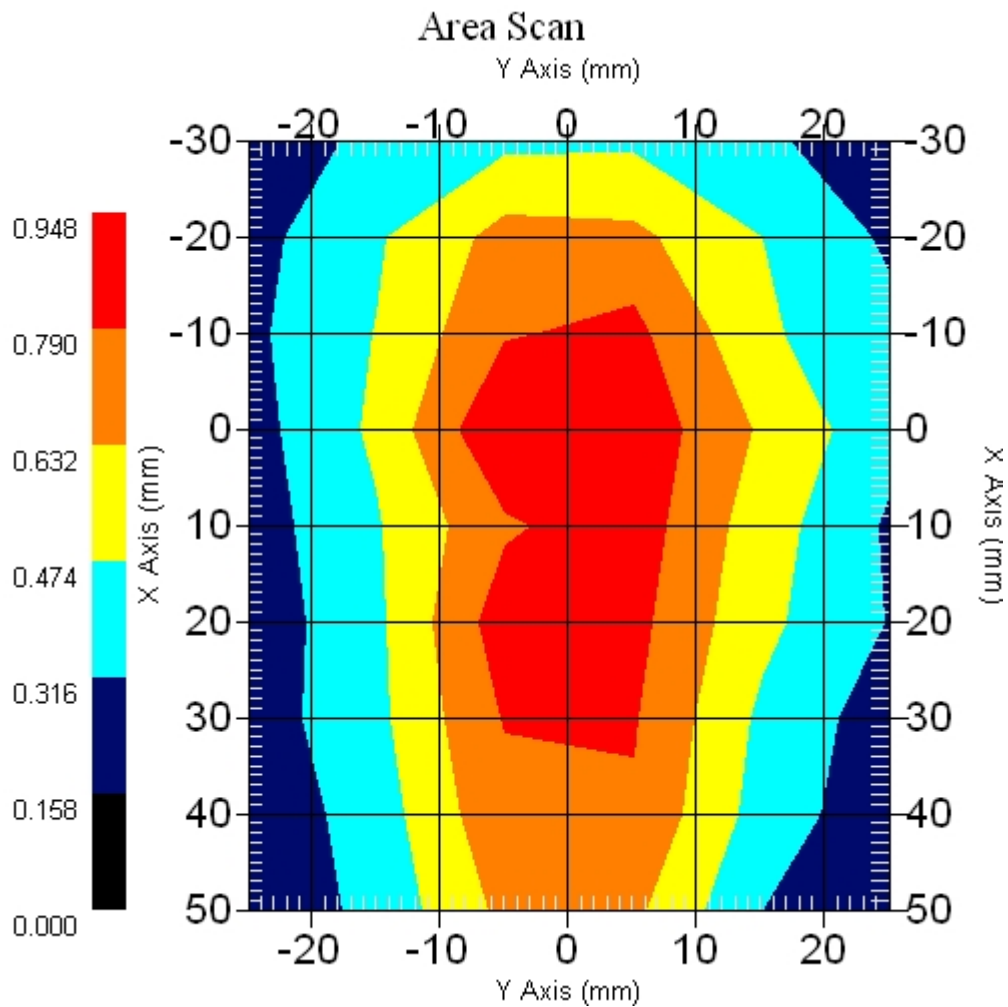
Measurement Data

Crest Factor : 1
Scan Type : Complete
Area Scan : 9x6x1 : Measurement x=10mm, y=10mm, z=4mm
Zoom Scan : 9x9x13 : Measurement x=4mm, y=4mm, z=2.5mm

Other Data

DUT Position : Touch
Separation : 0
Channel : Mid - 5260MHz

Power Drift-Start : 1.050 W/kg
Power Drift-Finish: 1.079 W/kg
Power Drift (%) : 2.765
Picture :



1 gram SAR value : 0.880 W/kg
10 gram SAR value : 0.613 W/kg
Area Scan Peak SAR : 0.946 W/kg
Zoom Scan Peak SAR : 1.411 W/kg

■ **5260 MHz, EUT Position: Tablet, SP, 1880 GSM**

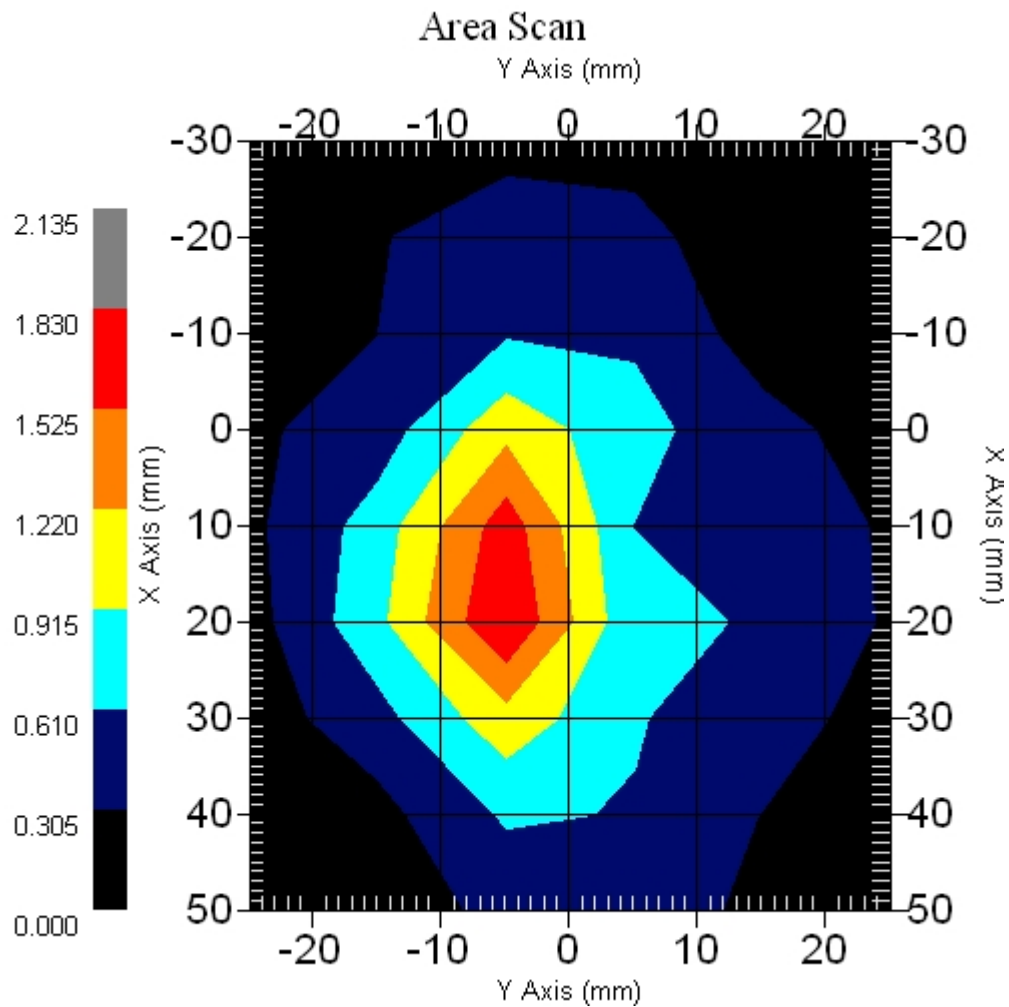
Measurement Data

Crest Factor : 1
Scan Type : Complete
Area Scan : 9x6x1 : Measurement x=10mm, y=10mm, z=4mm
Zoom Scan : 9x9x13 : Measurement x=4mm, y=4mm, z=2.5mm

Other Data

DUT Position : Touch
Separation : 0
Channel : Mid - 5260MHz

Power Drift-Start : 1.257 W/kg
Power Drift-Finish: 1.295 W/kg
Power Drift (%) : 3.023
Picture :



1 gram SAR value : 1.483 W/kg
10 gram SAR value : 0.787 W/kg
Area Scan Peak SAR : 1.830 W/kg
Zoom Scan Peak SAR : 2.892 W/kg

■ 5260 MHz, EUT Position: Tablet, SP, 1880 EGSM

Measurement Data

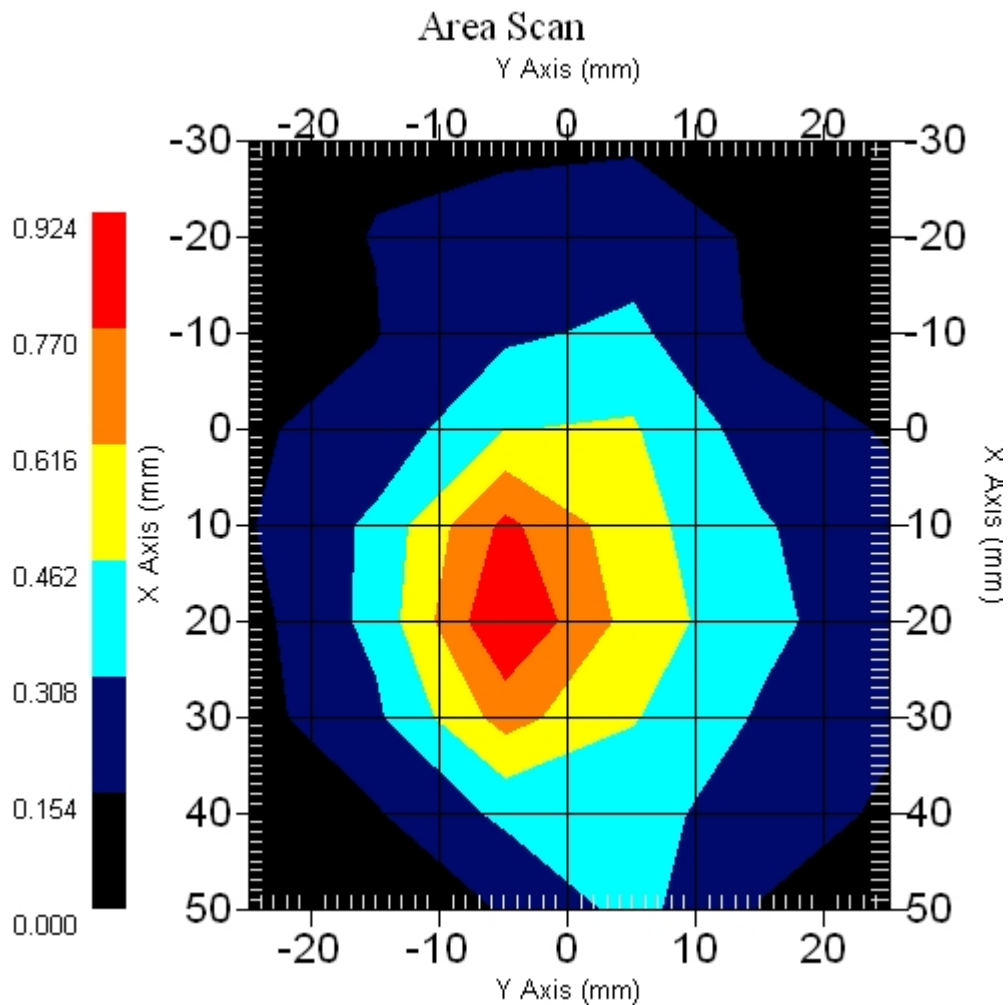
Crest Factor : 1
Scan Type : Complete

Area Scan : 9x6x1 : Measurement x=10mm, y=10mm, z=4mm
Zoom Scan : 9x9x13 : Measurement x=4mm, y=4mm, z=2.5mm

Other Data

DUT Position : Touch
Separation : 0
Channel : Mid - 5260MHz

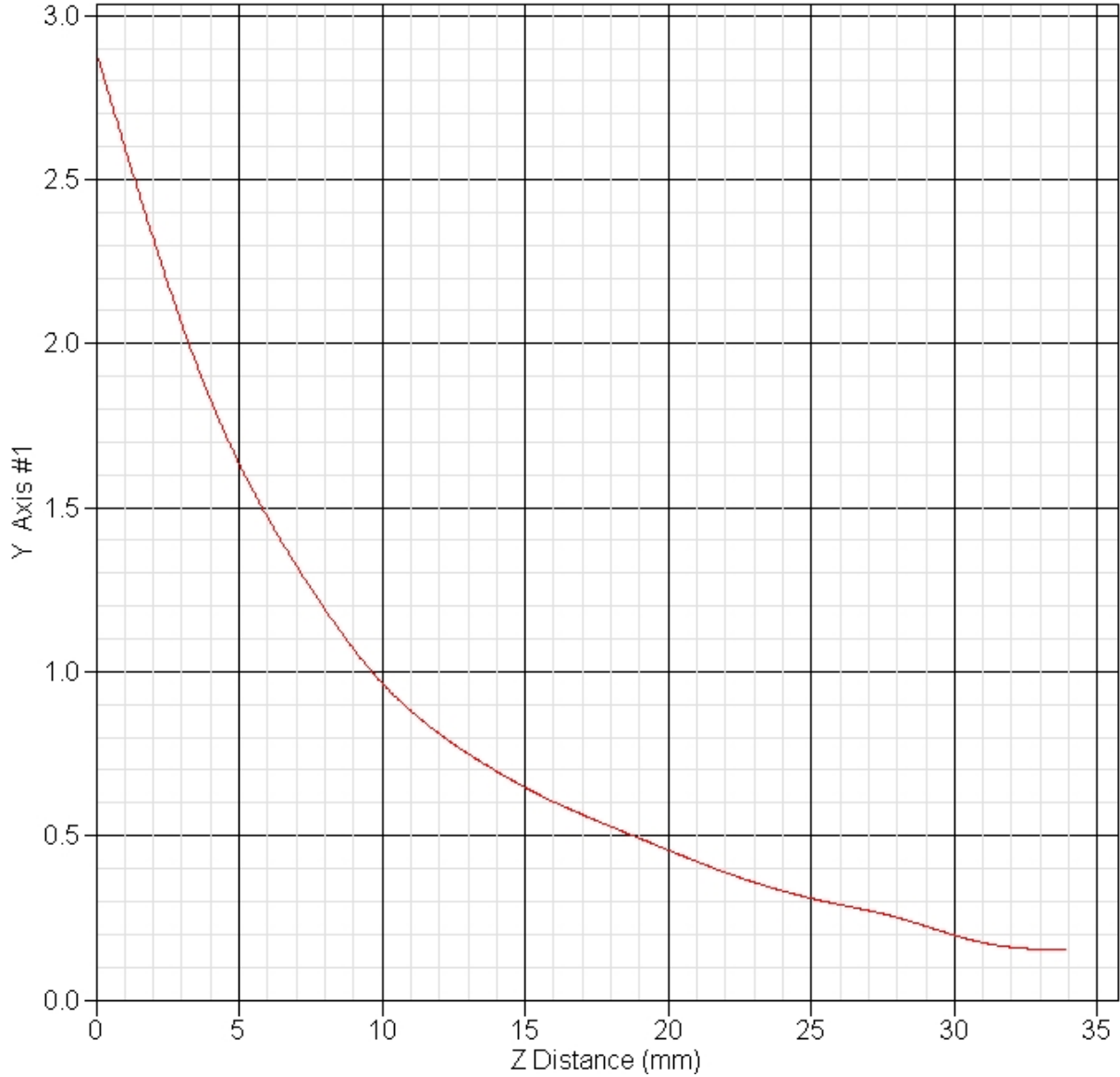
Power Drift-Start : 0.659 W/kg
Power Drift-Finish: 0.670 W/kg
Power Drift (%) : 1.686
Picture :



1 gram SAR value : 0.710 W/kg
10 gram SAR value : 0.397 W/kg
Area Scan Peak SAR : 0.923 W/kg
Zoom Scan Peak SAR : 1.431 W/kg

■ Z Axis 802.11a 5260 MHz, Position: Laptop, 836 GSM

SAR-Z Axis
at Hotspot x:20.40 y:-5.00

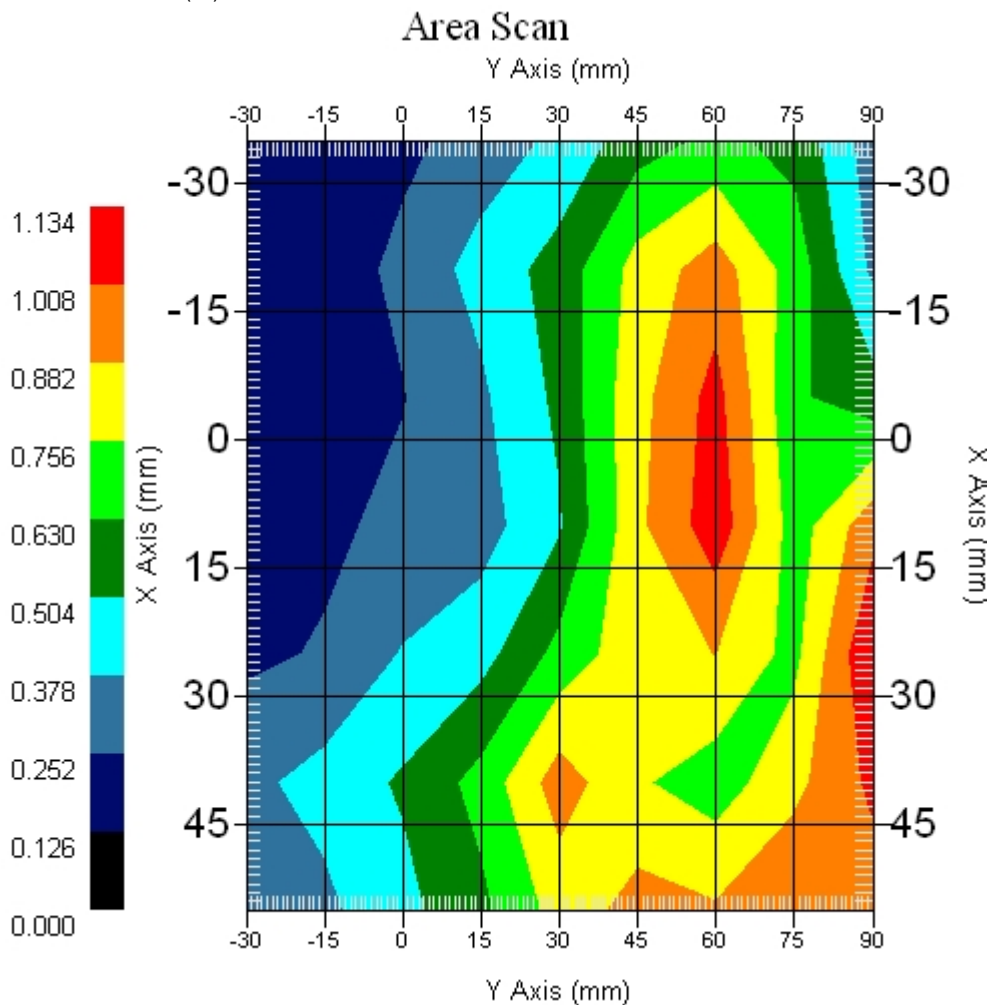


13.3 802.11a (5150 ~ 5350MHz)+ WWAN Tosa (EV-DO) : FCCID N7N-MC5720 + Bluetooth

■ 5260 MHz, EUT Position: Laptop, SP, 836 EV-DO

Measurement Data

Crest Factor : 1
 Scan Type : Complete
 Area Scan : 7x9x1 : Measurement x=15mm, y=15mm, z=4mm
 Zoom Scan : 9x9x13 : Measurement x=4mm, y=4mm, z=2.5mm
 DUT Position : Touch
 Separation : 0
 Channel : Mid - 5260MHz
 Power Drift-Start : 0.235 W/kg
 Power Drift-Finish : 0.242 W/kg
 Power Drift (%) : 2.978



1 gram SAR value : 1.060 W/kg
 10 gram SAR value : 0.737 W/kg
 Area Scan Peak SAR : 1.133 W/kg
 Zoom Scan Peak SAR : 1.611 W/kg

■ **5260 MHz, EUT Position: Laptop, SP, 836 EV-DO**

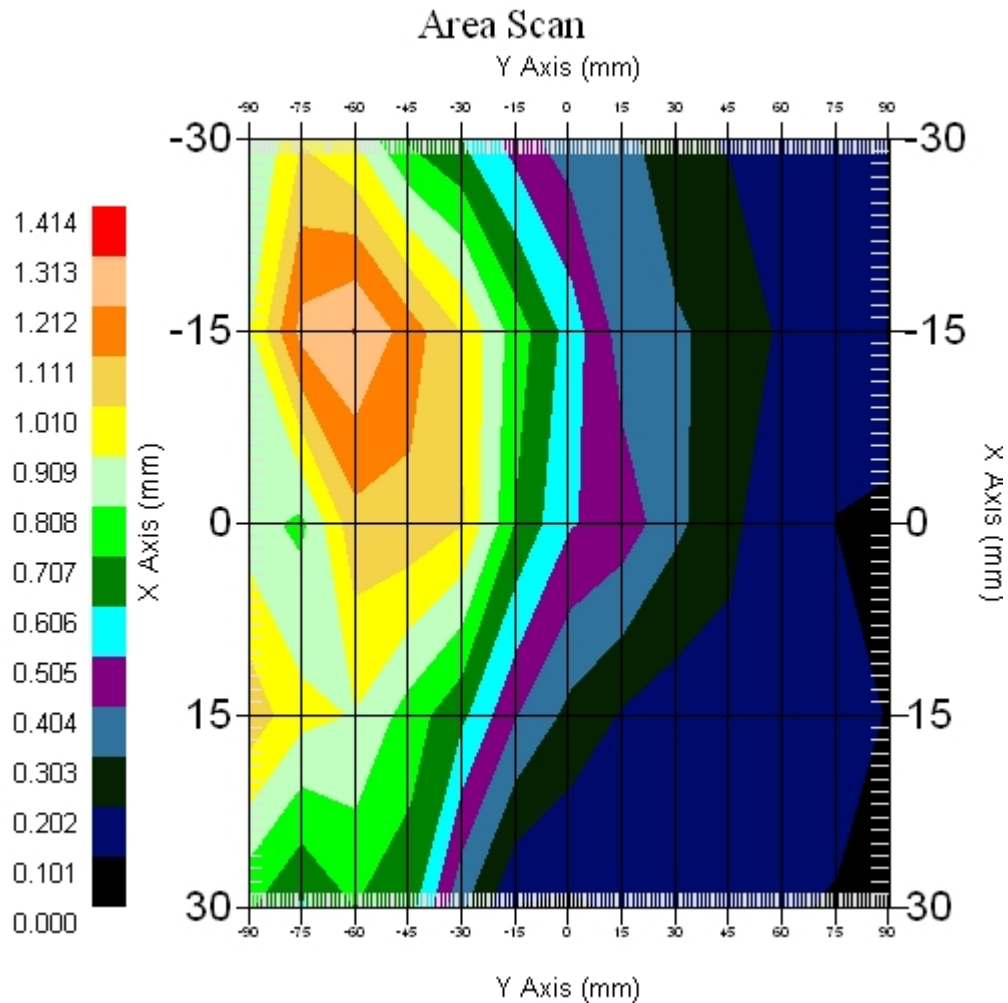
Measurement Data

Crest Factor : 1
Scan Type : Complete
Area Scan : 5x13x1 : Measurement x=15mm, y=15mm, z=4mm
Zoom Scan : 9x9x13 : Measurement x=4mm, y=4mm, z=2.5mm

Other Data

DUT Position : Touch
Separation : 0
Channel : Mid - 5260MHz

Power Drift-Start : 0.626 W/kg
Power Drift-Finish: 0.639 W/kg
Power Drift (%) : 2.076



1 gram SAR value : 1.461 W/kg
10 gram SAR value : 1.066 W/kg
Area Scan Peak SAR : 1.319 W/kg
Zoom Scan Peak SAR : 2.191 W/kg

■ 5260 MHz, EUT Position: Tablet, PL, 836 EV-DO

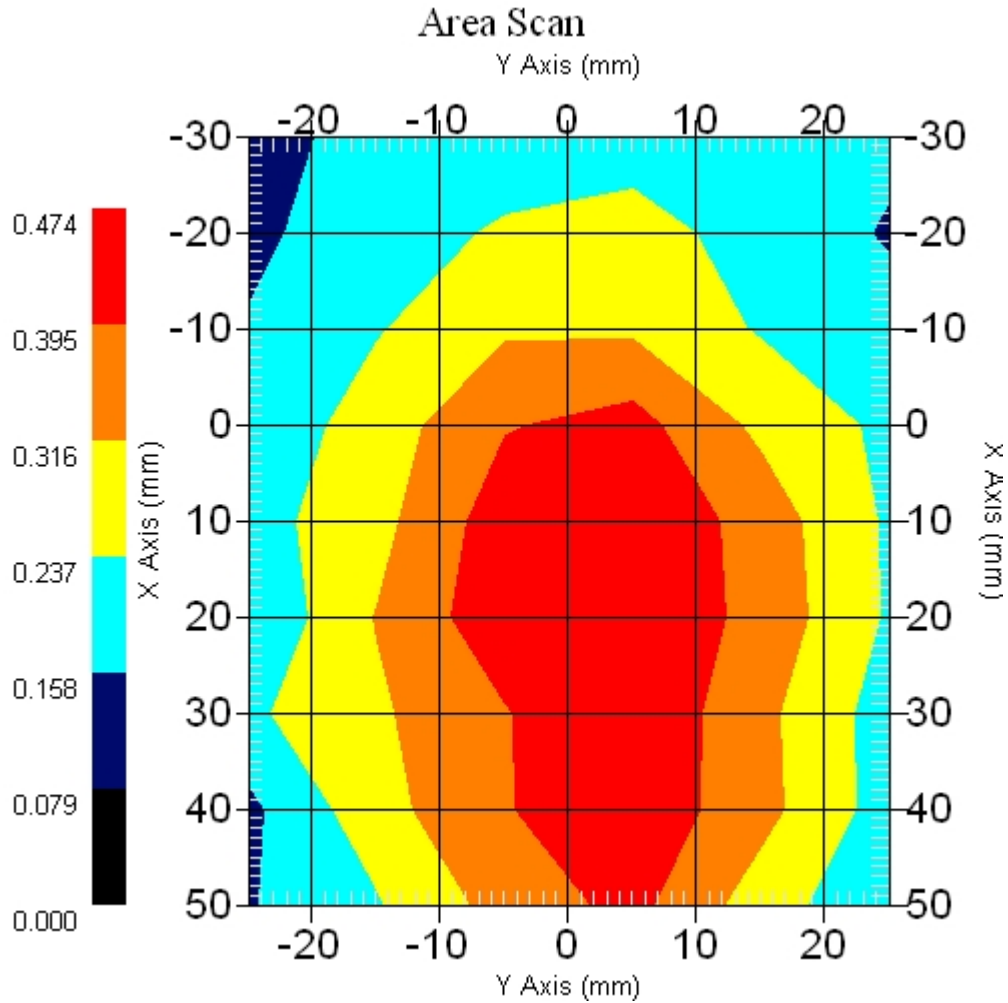
Measurement Data

Crest Factor : 1
Scan Type : Complete
Area Scan : 9x6x1 : Measurement x=10mm, y=10mm, z=4mm
Zoom Scan : 9x9x13 : Measurement x=4mm, y=4mm, z=2.5mm

Other Data

DUT Position : Touch
Separation : 0
Channel : Mid - 5260MHz

Power Drift-Start : 0.420 W/kg
Power Drift-Finish: 0.417 W/kg
Power Drift (%) : -0.714



1 gram SAR value : 0.525 W/kg
10 gram SAR value : 0.380 W/kg
Area Scan Peak SAR : 0.473 W/kg
Zoom Scan Peak SAR : 0.920 W/kg

■ **5260 MHz, EUT Position: Tablet, PP, 836 EV-DO**

Measurement Data

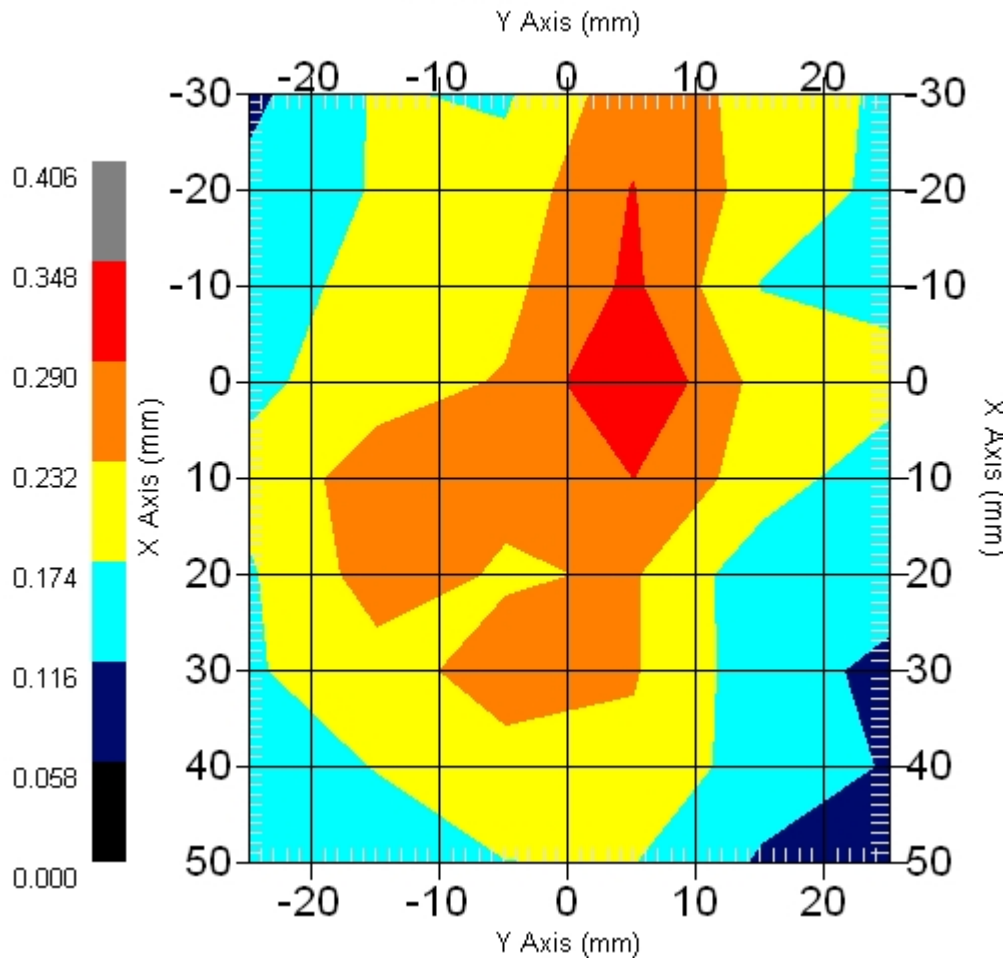
Crest Factor : 1
Scan Type : Complete
Area Scan : 9x6x1 : Measurement x=10mm, y=10mm, z=4mm
Zoom Scan : 9x9x13 : Measurement x=4mm, y=4mm, z=2.5mm

Other Data

DUT Position : Touch
Separation : 0
Channel : Mid - 5260MHz

Power Drift-Start : 0.278 W/kg
Power Drift-Finish: 0.279 W/kg
Power Drift (%) : 0.472

Area Scan



1 gram SAR value : 0.292 W/kg
10 gram SAR value : 0.224 W/kg
Area Scan Peak SAR : 0.348 W/kg
Zoom Scan Peak SAR : 0.510 W/kg

■ 5260 MHz, EUT Position: Tablet, SL, 836 EV-DO

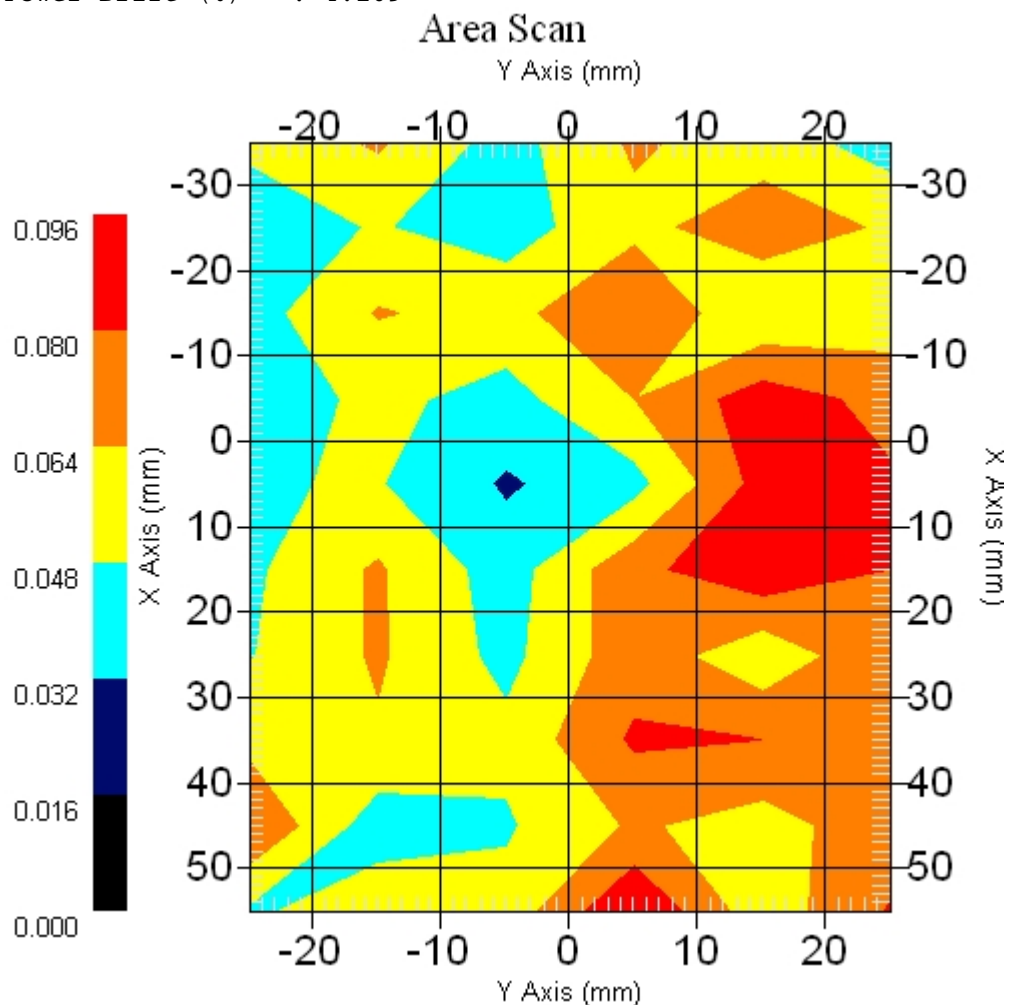
Measurement Data

Crest Factor : 1
Scan Type : Complete
Area Scan : 10x6x1 : Measurement x=10mm, y=10mm, z=4mm
Zoom Scan : 9x9x13 : Measurement x=4mm, y=4mm, z=2.5mm

Other Data

DUT Position : Touch
Separation : 0
Channel : Mid - 5260

Power Drift-Start : 0.073 W/kg
Power Drift-Finish: 0.076 W/kg
Power Drift (%) : 4.109



1 gram SAR value : 0.108 W/kg
10 gram SAR value : 0.087 W/kg
Area Scan Peak SAR : 0.096 W/kg
Zoom Scan Peak SAR : 0.310 W/kg

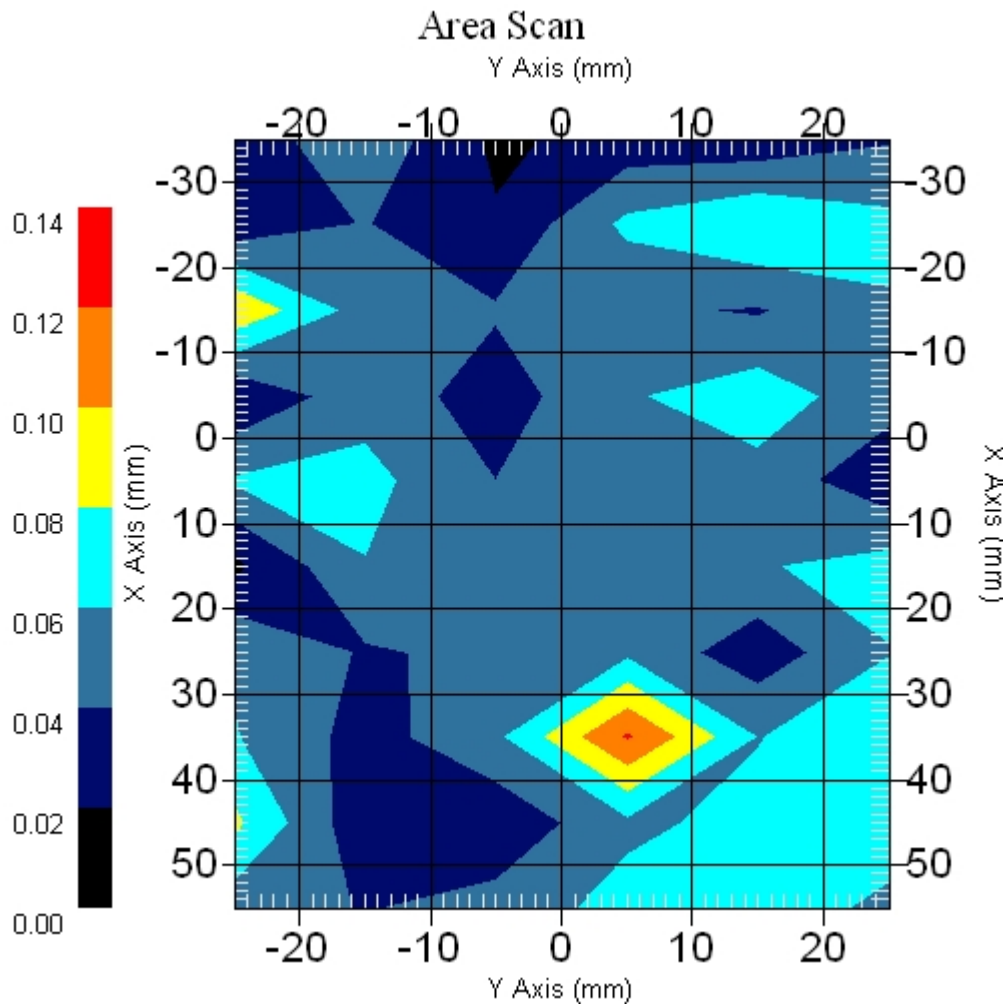
■ 5260 MHz Only, EUT Position: Tablet, SP

Measurement Data

Crest Factor : 1
Scan Type : Complete
Area Scan : 10x6x1 : Measurement x=10mm, y=10mm, z=4mm
Zoom Scan : 9x9x13 : Measurement x=4mm, y=4mm, z=2.5mm

DUT Position : Touch
Separation : 0
Channel : Mid - 5260

Power Drift-Start : 0.059 W/kg
Power Drift-Finish: 0.057 W/kg
Power Drift (%) : -3.390



1 gram SAR value : 0.086 W/kg
10 gram SAR value : 0.081 W/kg
Area Scan Peak SAR : 0.122 W/kg
Zoom Scan Peak SAR : 0.170 W/kg

■ **EUT Position: Tablet, SP, 836 EV-DO Only**

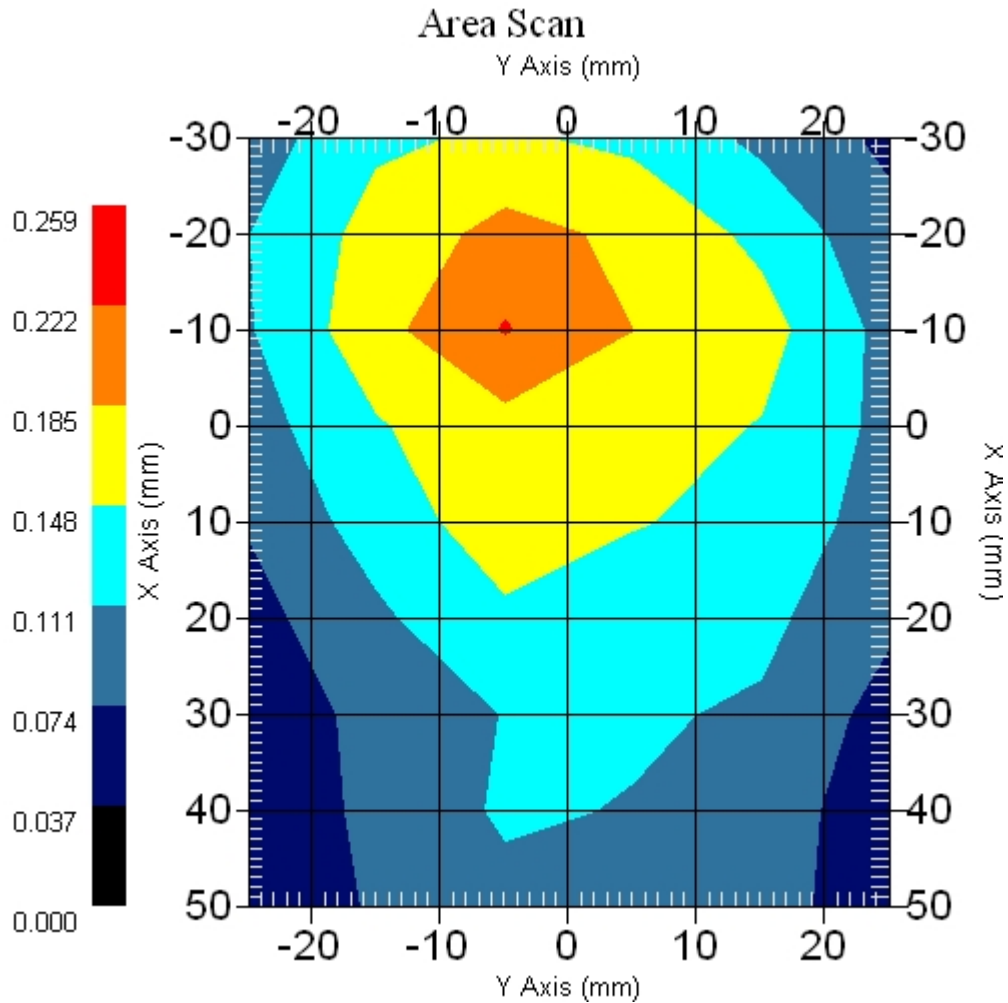
Measurement Data

Crest Factor : 1
Scan Type : Complete
Area Scan : 9x6x1 : Measurement x=10mm, y=10mm, z=4mm
Zoom Scan : 5x5x8 : Measurement x=8mm, y=8mm, z=4mm

Other Data

DUT Position : Touch
Separation : 0
Channel : Mid - 800MHz

Power Drift-Start : 0.175 W/kg
Power Drift-Finish: 0.173 W/kg
Power Drift (%) : -0.939



1 gram SAR value : 0.203 W/kg
10 gram SAR value : 0.130 W/kg
Area Scan Peak SAR : 0.225 W/kg
Zoom Scan Peak SAR : 0.350 W/kg