

■ **5260 MHz, EUT Position: Laptop, 836 EGSM**

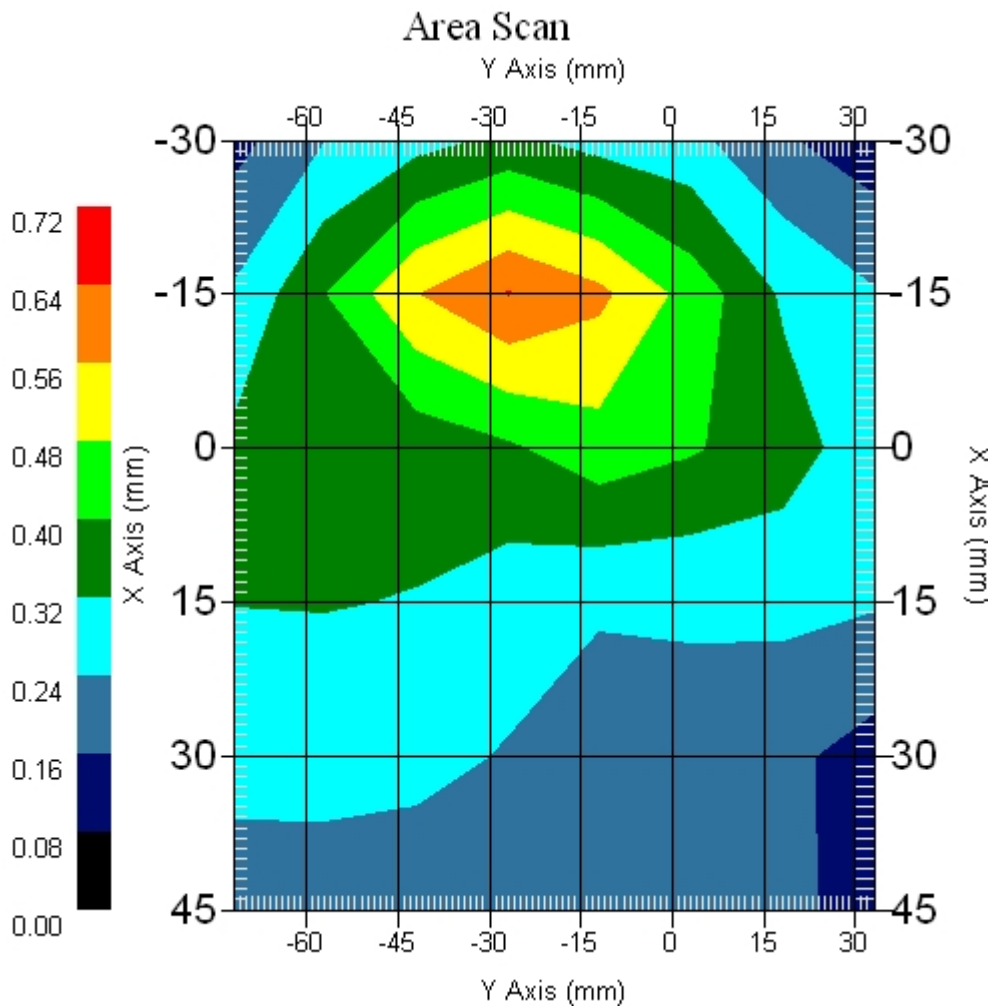
Measurement Data

Crest Factor : 1  
Scan Type : Complete  
Area Scan : 6x8x1 : Measurement x=15mm, y=15mm, z=4mm  
Zoom Scan : 9x9x13 : Measurement x=4mm, y=4mm, z=2.5mm

Other Data

DUT Position : Touch  
Separation : 0  
Channel : Mid - 5260MHz

Power Drift-Start : 0.436 W/kg  
Power Drift-Finish: 0.455 W/kg  
Power Drift (%) : 4.334  
Picture :



1 gram SAR value : 0.558 W/kg  
10 gram SAR value : 0.402 W/kg  
Area Scan Peak SAR : 0.644 W/kg  
Zoom Scan Peak SAR : 0.790 W/kg

■ 5260 MHz, EUT Position: Tablet ,PL , 836 EGSM

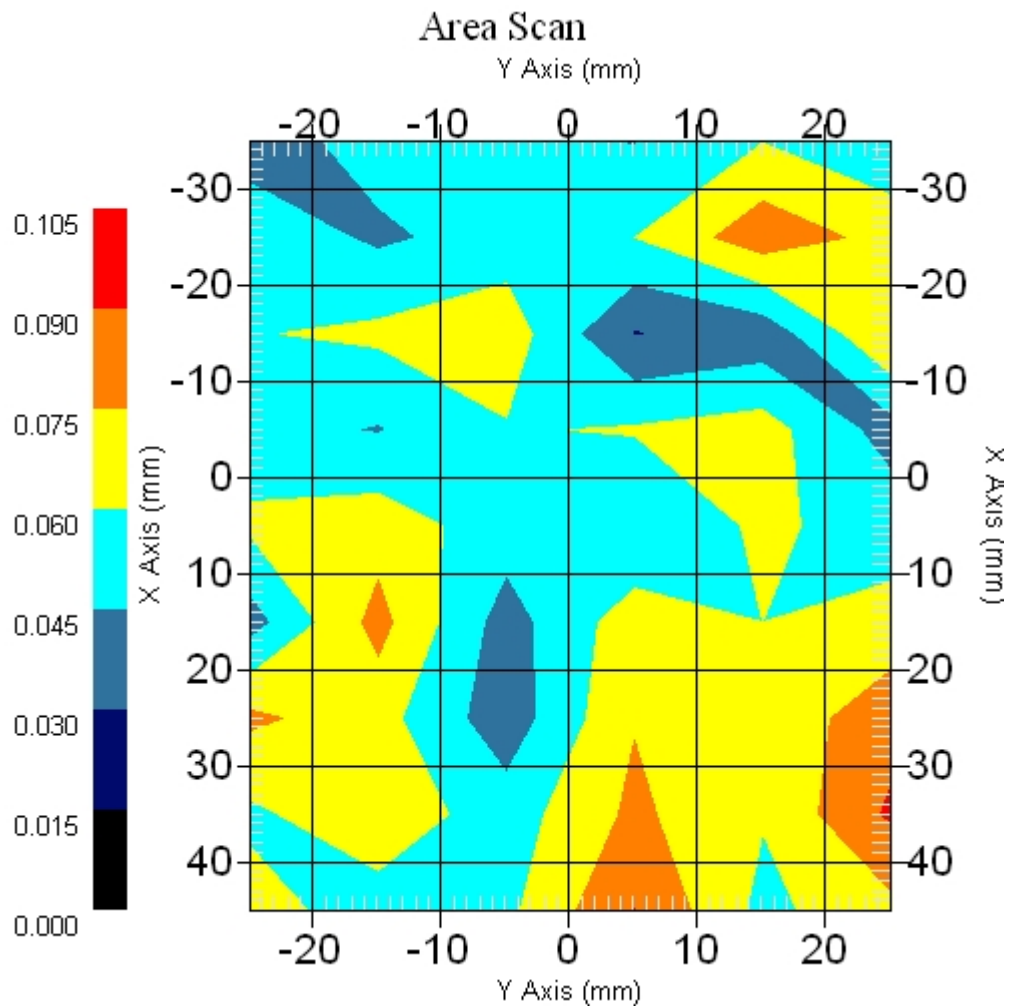
Measurement Data

Crest Factor : 1  
Scan Type : Complete  
Area Scan : 9x6x1 : Measurement x=10mm, y=10mm, z=4mm  
Zoom Scan : 9x9x13 : Measurement x=4mm, y=4mm, z=2.5mm

Other Data

DUT Position : Touch  
Separation : 0  
Channel : Mid - 5260MHz

Power Drift-Start : 0.071 W/kg  
Power Drift-Finish: 0.074 W/kg  
Power Drift (%) : 4.225  
Picture :



1 gram SAR value : 0.132 W/kg  
10 gram SAR value : 0.094 W/kg  
Area Scan Peak SAR : 0.092 W/kg  
Zoom Scan Peak SAR : 0.350 W/kg

■ 5260 MHz, EUT Position: Tablet, PP, 836 EGSM

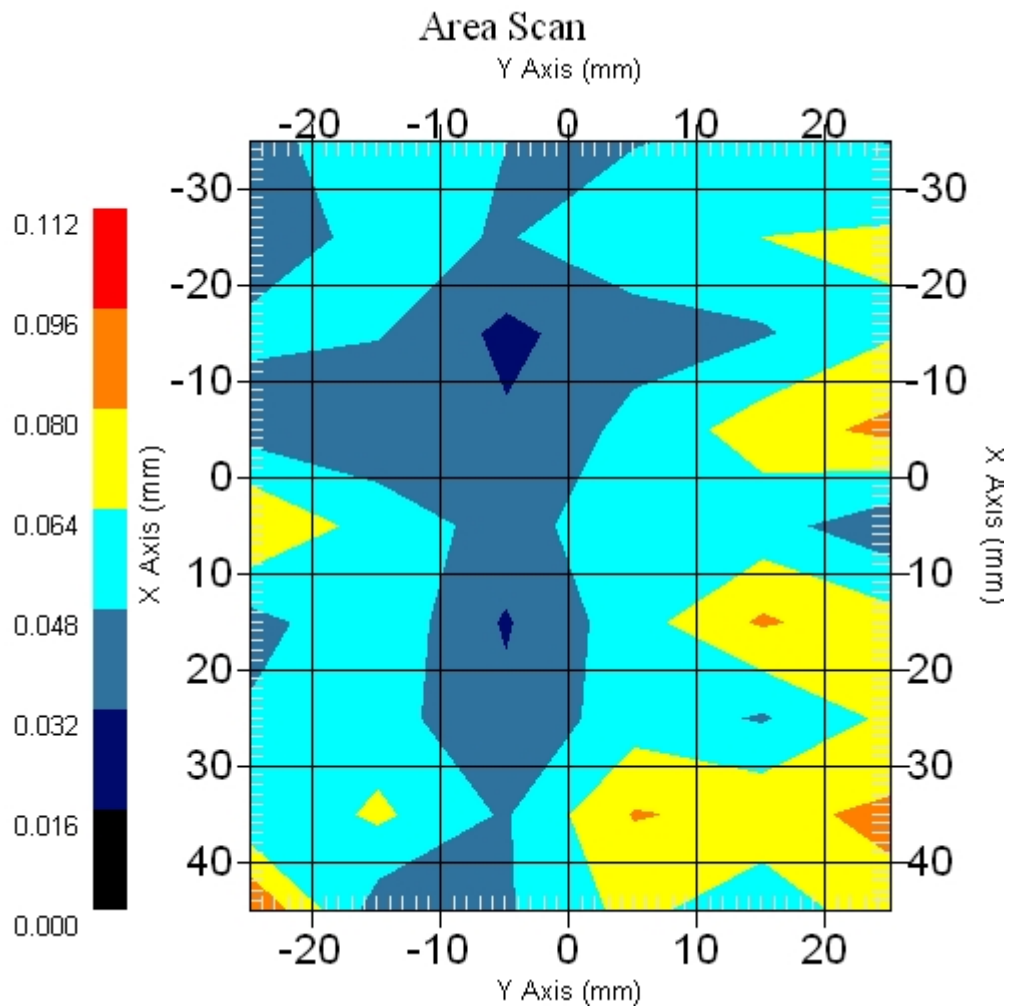
Measurement Data

Crest Factor : 1  
Scan Type : Complete  
Area Scan : 9x6x1 : Measurement x=10mm, y=10mm, z=4mm  
Zoom Scan : 9x9x13 : Measurement x=4mm, y=4mm, z=2.5mm

Other Data

DUT Position : Touch  
Separation : 0  
Channel : Mid - 5260

Power Drift-Start : 0.054 W/kg  
Power Drift-Finish: 0.053 W/kg  
Power Drift (%) : -1.851  
Picture :



1 gram SAR value : 0.188 W/kg  
10 gram SAR value : 0.128 W/kg  
Area Scan Peak SAR : 0.097 W/kg  
Zoom Scan Peak SAR : 0.160 W/kg

■ 5260 MHz, EUT Position: Tablet, SL, 836 EGSM

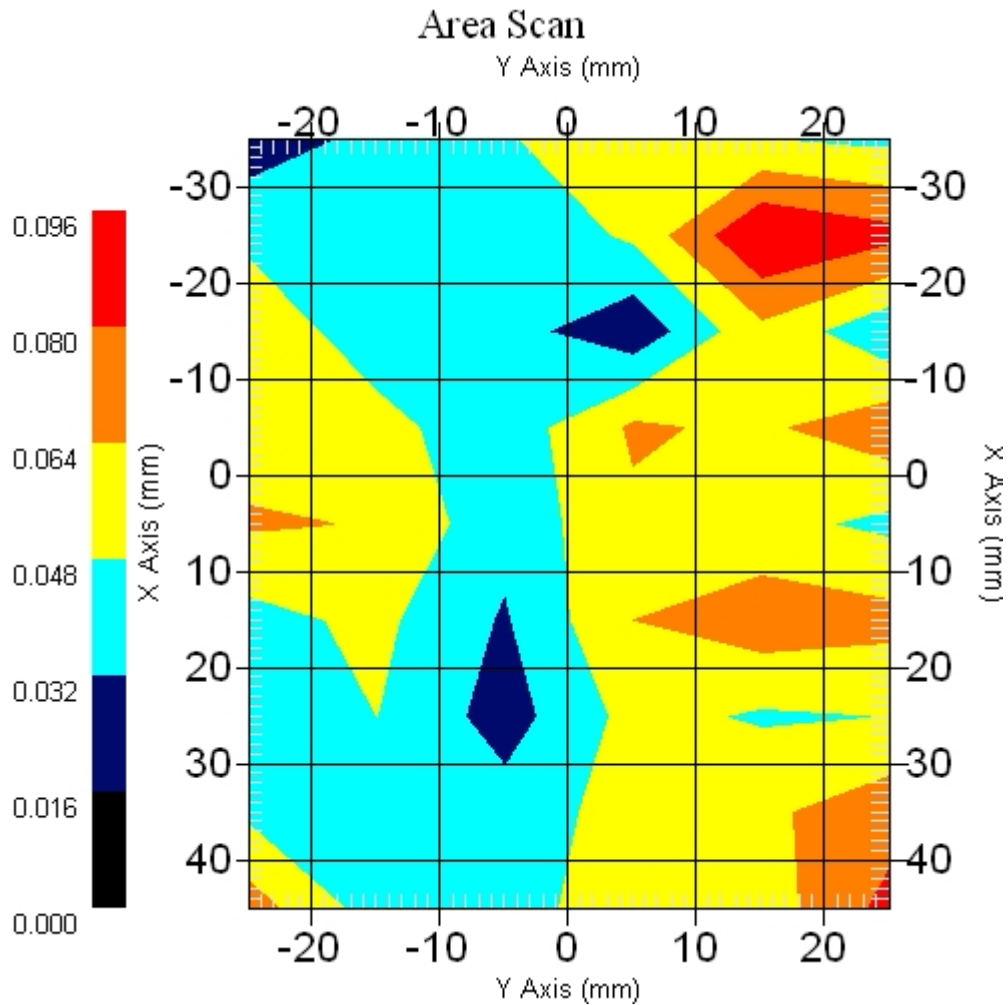
Measurement Data

Crest Factor : 1  
Scan Type : Complete  
Area Scan : 9x6x1 : Measurement x=10mm, y=10mm, z=4mm  
Zoom Scan : 9x9x13 : Measurement x=4mm, y=4mm, z=2.5mm

Other Data

DUT Position : Touch  
Separation : 0  
Channel : Mid - 5260MHz

Power Drift-Start : 0.059 W/kg  
Power Drift-Finish: 0.061 W/kg  
Power Drift (%) : 3.389  
Picture :



1 gram SAR value : 0.053 W/kg  
10 gram SAR value : 0.062 W/kg  
Area Scan Peak SAR : 0.096 W/kg  
Zoom Scan Peak SAR : 0.130 W/kg

■ 5260 MHz, EUT Position: Tablet, SP, 836 EGSM

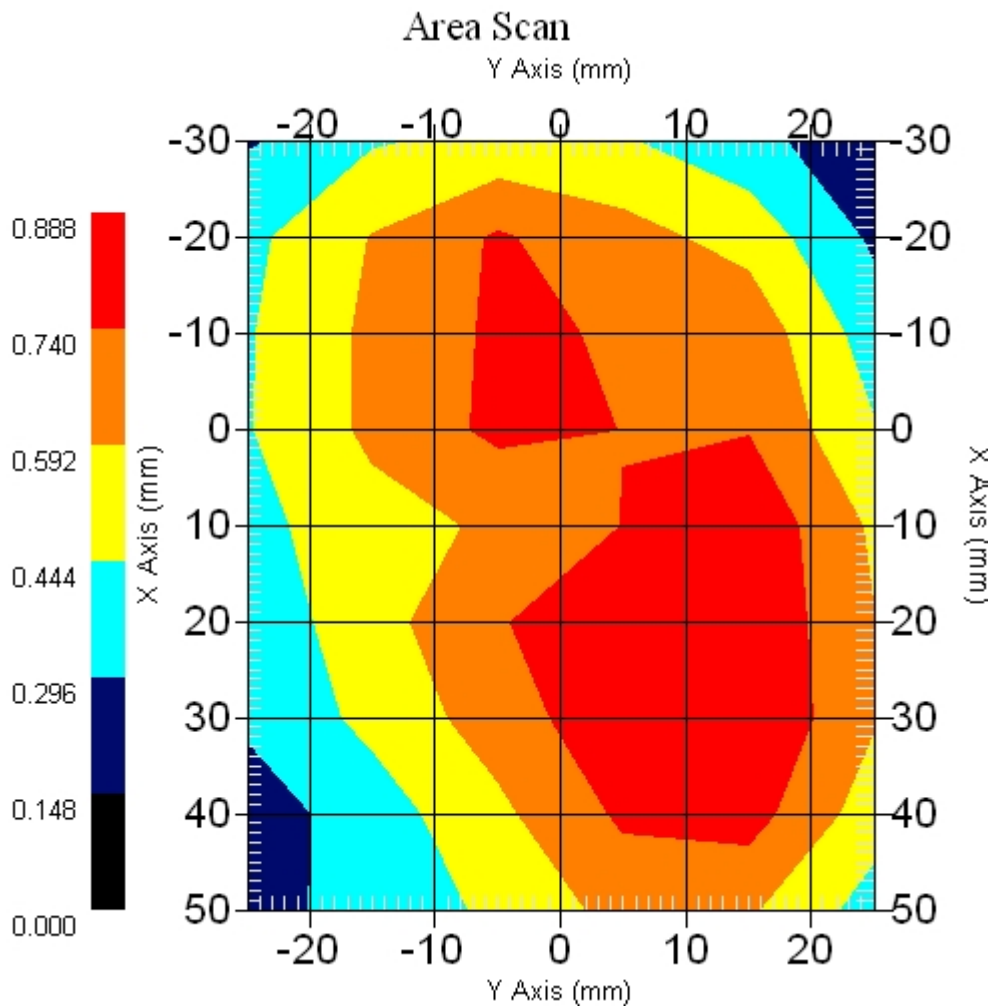
Measurement Data

Crest Factor : 1  
Scan Type : Complete  
Area Scan : 9x6x1 : Measurement x=10mm, y=10mm, z=4mm  
Zoom Scan : 9x9x13 : Measurement x=4mm, y=4mm, z=2.5mm

Other Data

DUT Position : Touch  
Separation : 0  
Channel : Mid - 5260MHz

Power Drift-Start : 0.824 W/kg  
Power Drift-Finish: 0.831 W/kg  
Power Drift (%) : 0.849  
Picture :



1 gram SAR value : 0.659 W/kg  
10 gram SAR value : 0.529 W/kg  
Area Scan Peak SAR : 0.888 W/kg  
Zoom Scan Peak SAR : 0.910 W/kg

■ 5260 MHz, EUT Position: Laptop, 836 UMTS

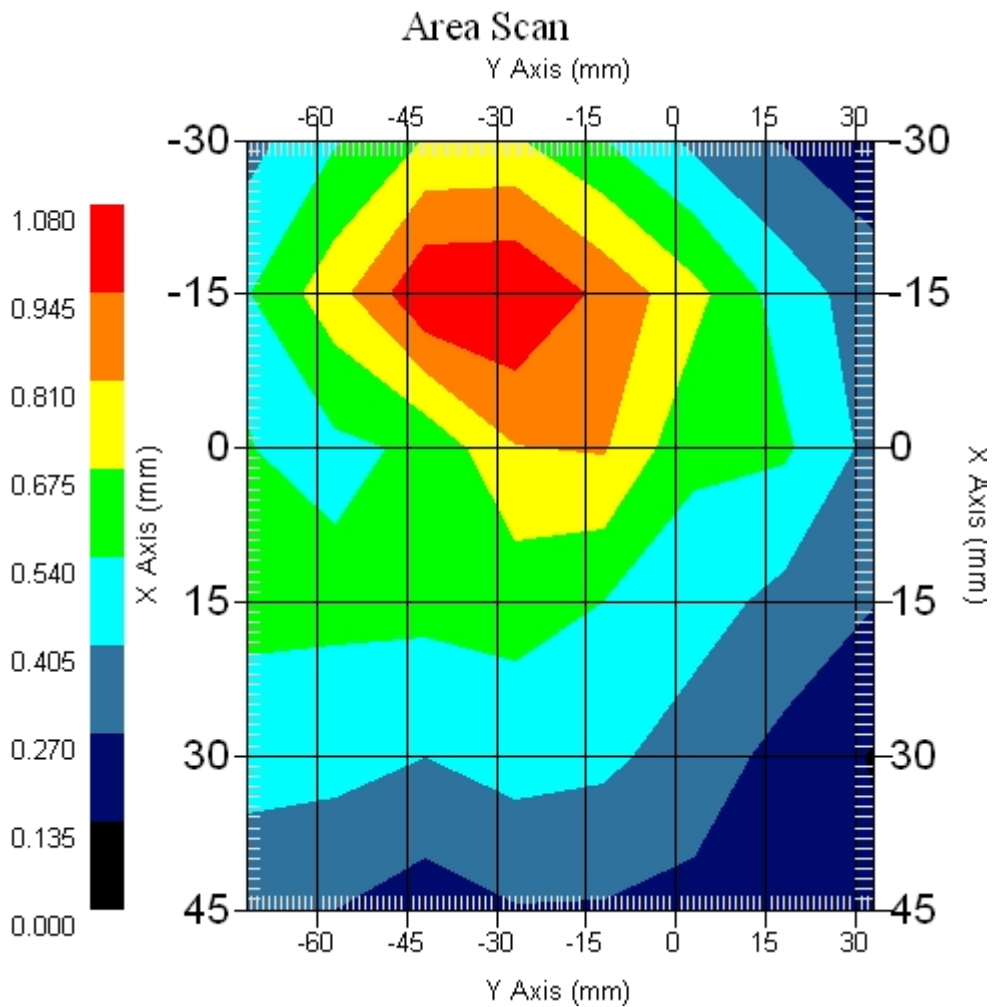
Measurement Data

Crest Factor : 1  
Scan Type : Complete  
Area Scan : 6x8x1 : Measurement x=15mm, y=15mm, z=4mm  
Zoom Scan : 9x9x13 : Measurement x=4mm, y=4mm, z=2.5mm

Other Data

DUT Position : Touch  
Separation : 0  
Channel : Mid - 5260MHz

Power Drift-Start : 0.776 W/kg  
Power Drift-Finish: 0.772 W/kg  
Power Drift (%) : -3.865  
Picture :



1 gram SAR value : 1.000 W/kg  
10 gram SAR value : 0.718 W/kg  
Area Scan Peak SAR : 1.079 W/kg  
Zoom Scan Peak SAR : 1.381 W/kg

■ 5260 MHz, EUT Position: Laptop, 836 UMTS

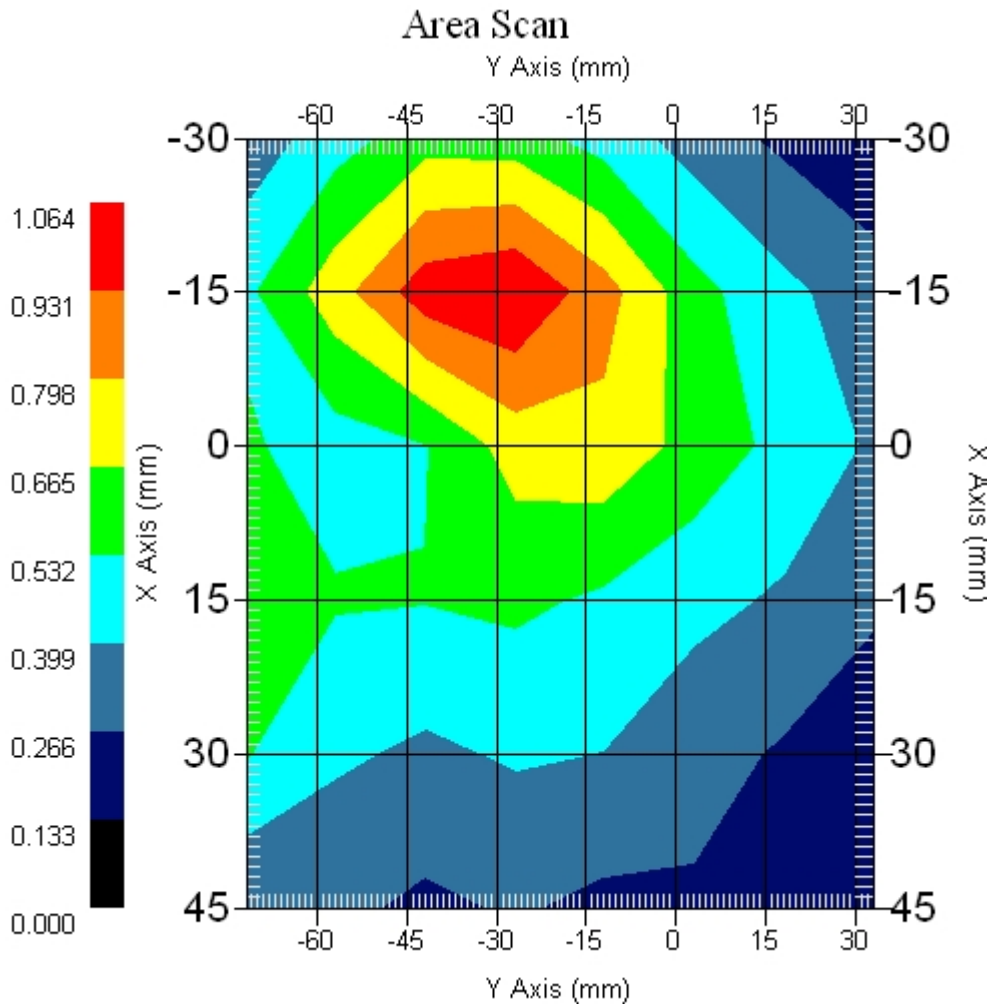
Measurement Data

Crest Factor : 1  
Scan Type : Complete  
Area Scan : 6x8x1 : Measurement x=15mm, y=15mm, z=4mm  
Zoom Scan : 9x9x13 : Measurement x=4mm, y=4mm, z=2.5mm

Other Data

DUT Position : Touch  
Separation : 0  
Channel : Mid - 5260MHz

Power Drift-Start : 0.673 W/kg  
Power Drift-Finish: 0.662 W/kg  
Power Drift (%) : -1.560  
Picture :



1 gram SAR value : 0.959 W/kg  
10 gram SAR value : 0.690 W/kg  
Area Scan Peak SAR : 1.063 W/kg  
Zoom Scan Peak SAR : 1.421 W/kg

■ 5260 MHz, EUT Position: Tablet, PL, 836 UMTS

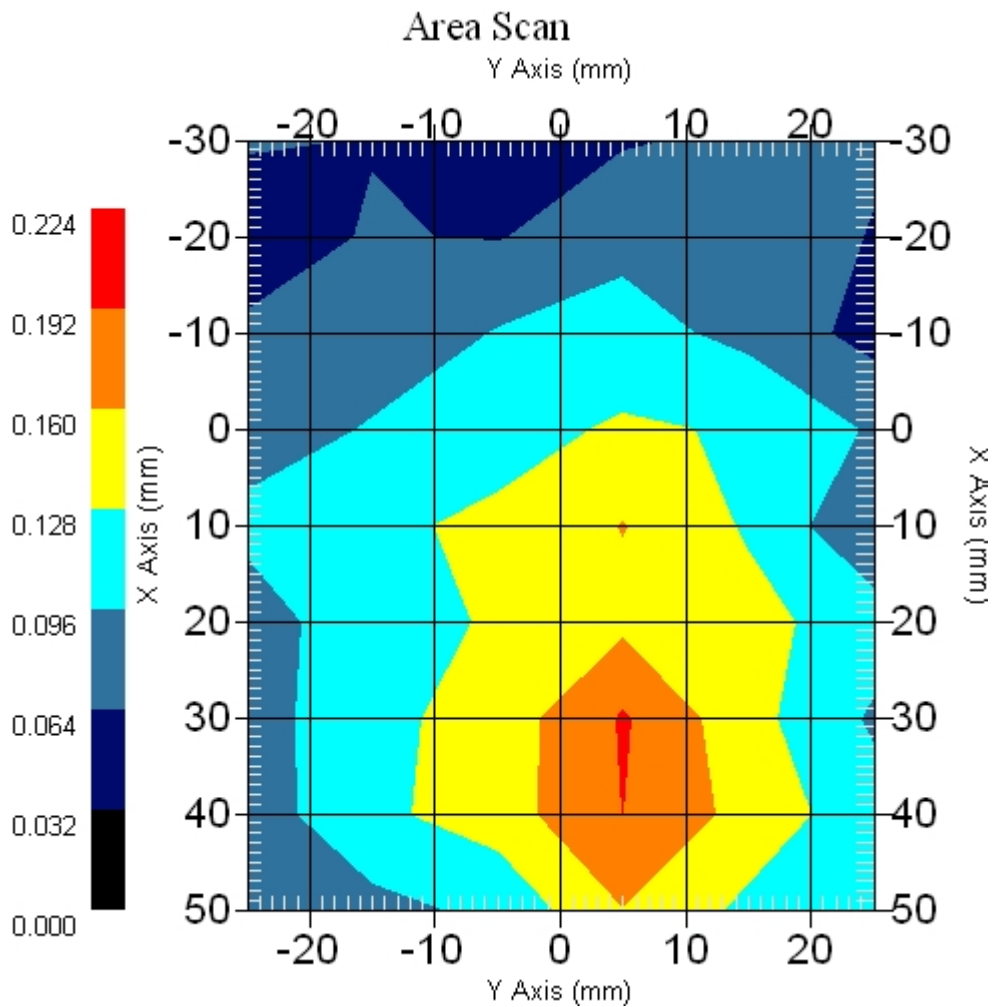
Measurement Data

Crest Factor : 1  
Scan Type : Complete  
Area Scan : 9x6x1 : Measurement x=10mm, y=10mm, z=4mm  
Zoom Scan : 9x9x13 : Measurement x=4mm, y=4mm, z=2.5mm

Other Data

DUT Position : Touch  
Separation : 0  
Channel : Mid - 5260MHz

Power Drift-Start : 0.132 W/kg  
Power Drift-Finish: 0.128 W/kg  
Power Drift (%) : -3.139  
Picture :



1 gram SAR value : 0.199 W/kg  
10 gram SAR value : 0.152 W/kg  
Area Scan Peak SAR : 0.195 W/kg  
Zoom Scan Peak SAR : 0.250 W/kg



■ **5260 MHz, EUT Position: Tablet, PP, 836 UMTS**

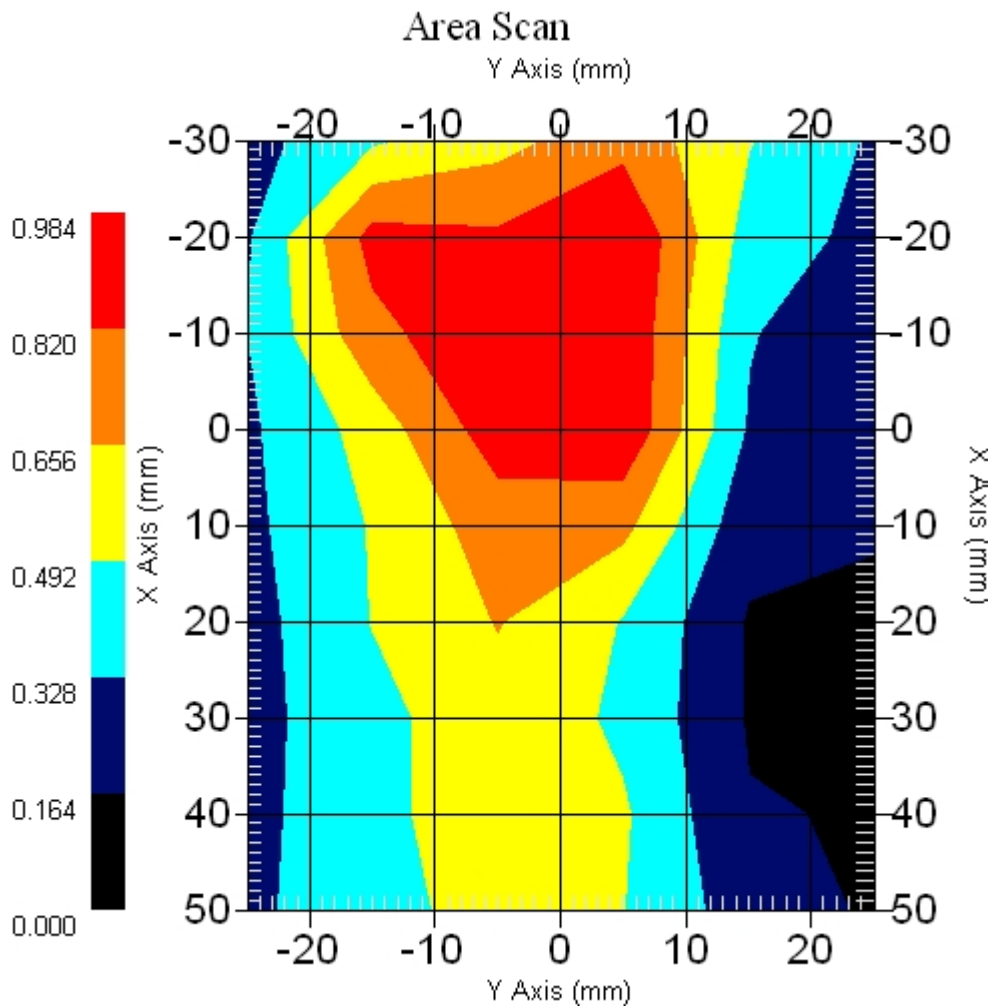
Measurement Data

Crest Factor : 1  
Scan Type : Complete  
Area Scan : 9x6x1 : Measurement x=10mm, y=10mm, z=4mm  
Zoom Scan : 9x9x13 : Measurement x=4mm, y=4mm, z=2.5mm

Other Data

DUT Position : Touch  
Separation : 0  
Channel : Mid - 5260MHz

Power Drift-Start : 1.205 W/kg  
Power Drift-Finish: 1.205 W/kg  
Power Drift (%) : -0.012  
Picture :



1 gram SAR value : 0.955 W/kg  
10 gram SAR value : 0.603 W/kg  
Area Scan Peak SAR : 0.982 W/kg  
Zoom Scan Peak SAR : 1.851 W/kg

■ 5260 MHz, EUT Position: Tablet, SL, 836 UMTS

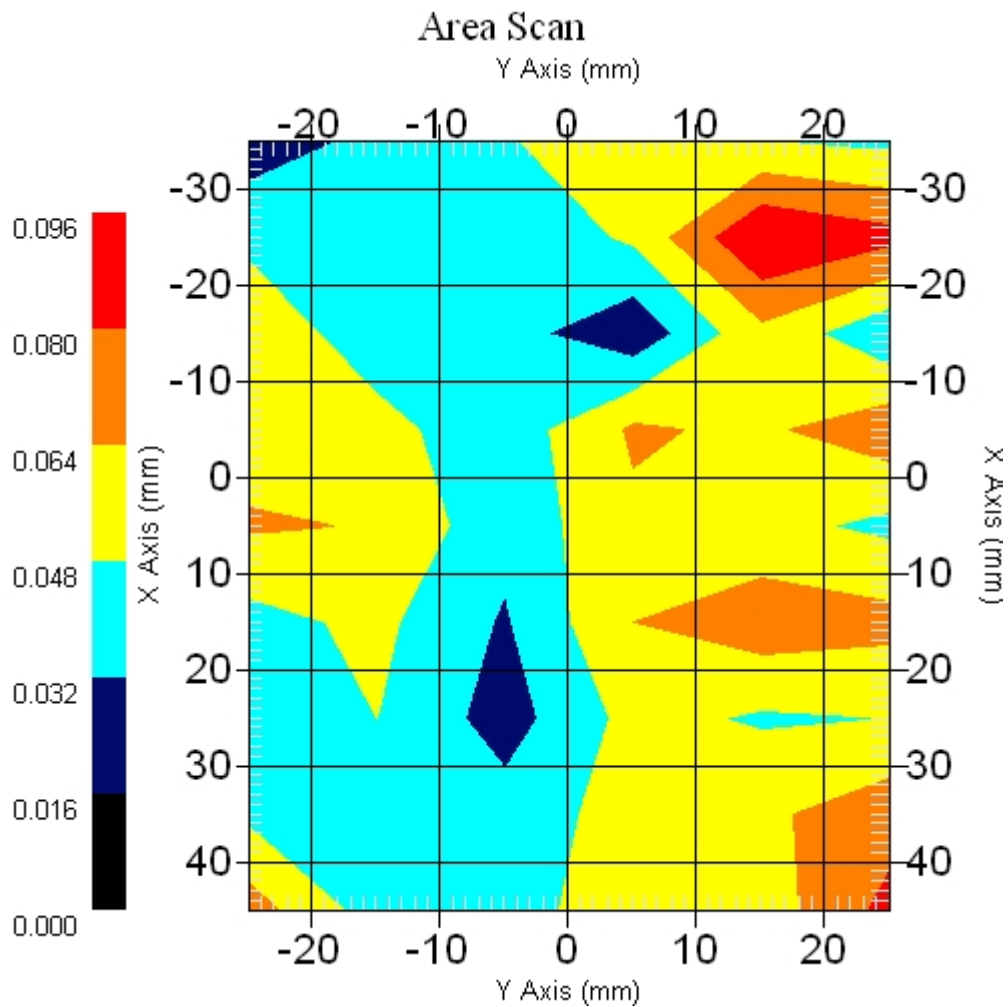
Measurement Data

Crest Factor : 1  
Scan Type : Complete  
Area Scan : 9x6x1 : Measurement x=10mm, y=10mm, z=4mm  
Zoom Scan : 9x9x13 : Measurement x=4mm, y=4mm, z=2.5mm

Other Data

DUT Position : Touch  
Separation : 0  
Channel : Mid - 5260MHz

Power Drift-Start : 0.059 W/kg  
Power Drift-Finish: 0.061 W/kg  
Power Drift (%) : 3.389  
Picture :



1 gram SAR value : 0.053 W/kg  
10 gram SAR value : 0.062 W/kg  
Area Scan Peak SAR : 0.096 W/kg  
Zoom Scan Peak SAR : 0.165 W/kg

■ 5260 MHz Only, EUT Position: Tablet, SP

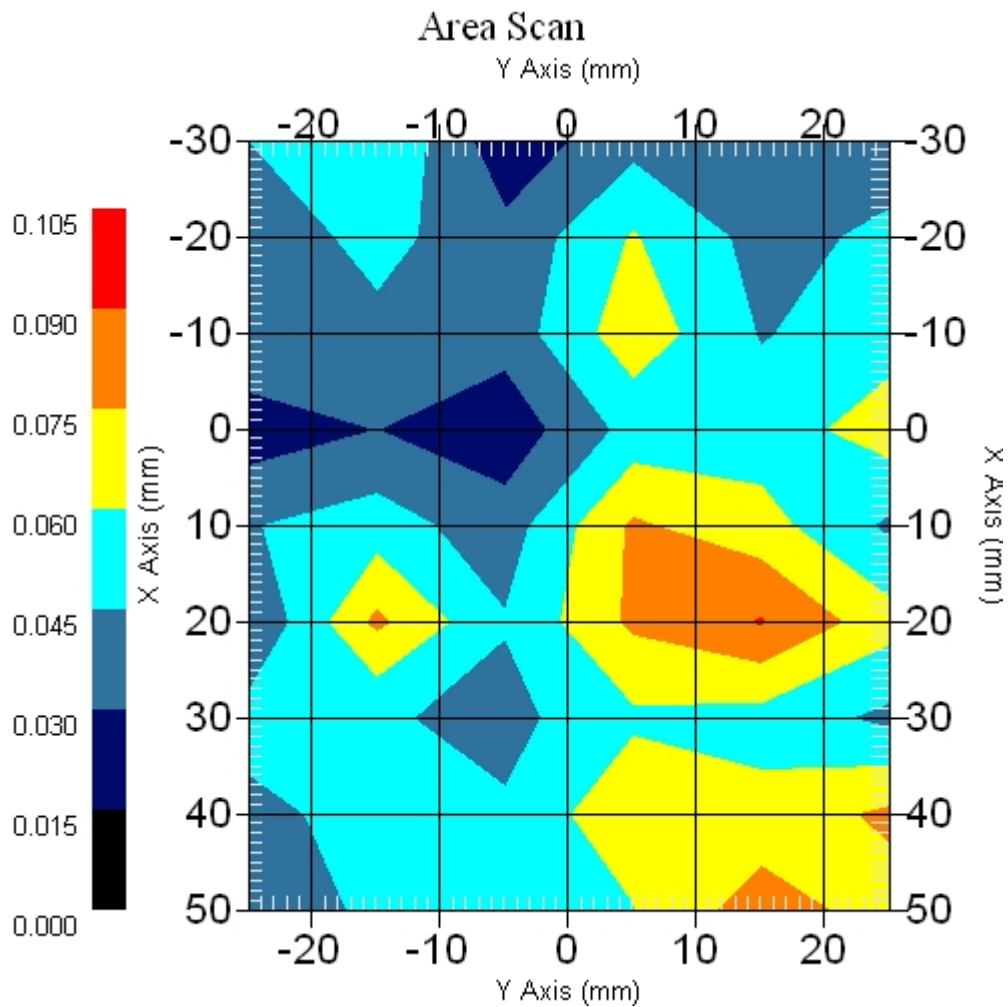
Measurement Data

Crest Factor : 1  
Scan Type : Complete  
Area Scan : 9x6x1 : Measurement x=10mm, y=10mm, z=4mm  
Zoom Scan : 9x9x13 : Measurement x=4mm, y=4mm, z=2.5mm

Other Data

DUT Position : Touch  
Separation : 0  
Channel : Mid - 5260

Power Drift-Start : 0.061 W/kg  
Power Drift-Finish: 0.064 W/kg  
Power Drift (%) : 4.918  
Picture :



1 gram SAR value : 0.107 W/kg  
10 gram SAR value : 0.083 W/kg  
Area Scan Peak SAR : 0.091 W/kg  
Zoom Scan Peak SAR : 0.240 W/kg

■ **EUT Position: Tablet, SP, 836 UMTS Only**

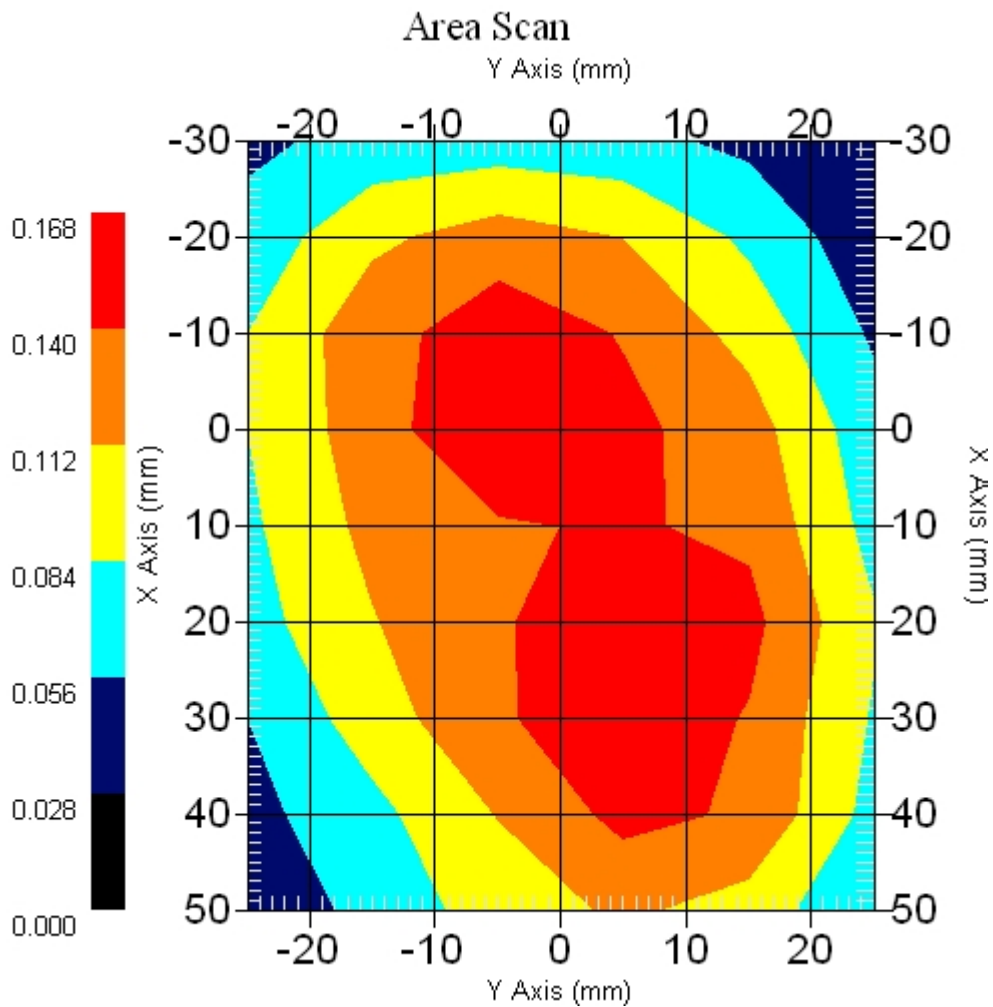
Measurement Data

Crest Factor : 1  
 Scan Type : Complete  
 Area Scan : 9x6x1 : Measurement x=10mm, y=10mm, z=4mm  
 Zoom Scan : 9x9x13 : Measurement x=4mm, y=4mm, z=2.5mm

Other Data

DUT Position : Touch  
 Separation : 0  
 Channel : Mid - 5260MHz

Power Drift-Start : 0.158 W/kg  
 Power Drift-Finish: 0.158 W/kg  
 Power Drift (%) : -0.112  
 Picture :



1 gram SAR value : 0.153 W/kg  
 10 gram SAR value : 0.099 W/kg  
 Area Scan Peak SAR : 0.168 W/kg  
 Zoom Scan Peak SAR : 0.250 W/kg

■ 5260 MHz, EUT Position: Tablet, SP, 1880 GSM

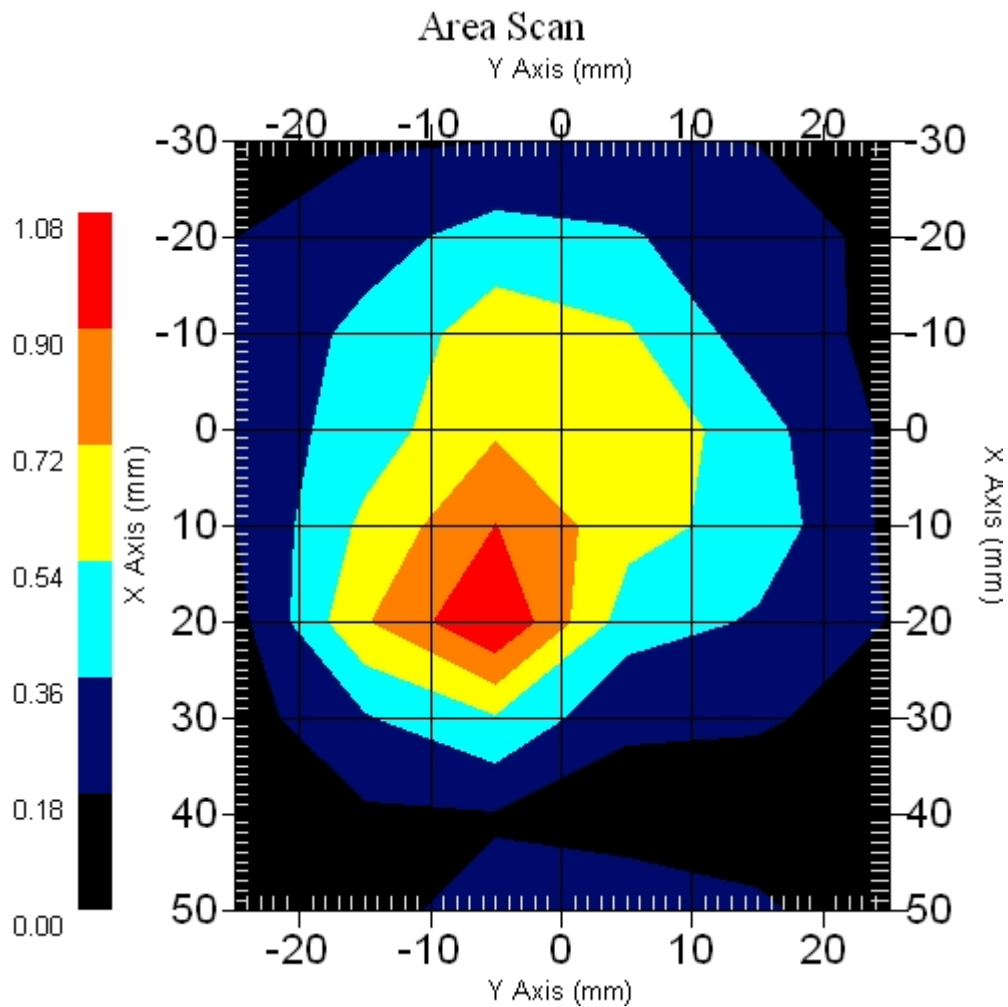
Measurement Data

Crest Factor : 1  
Scan Type : Complete  
Area Scan : 9x6x1 : Measurement x=10mm, y=10mm, z=4mm  
Zoom Scan : 9x9x13 : Measurement x=4mm, y=4mm, z=2.5mm

Other Data

DUT Position : Touch  
Separation : 0  
Channel : Mid - 5260MHz

Power Drift-Start : 0.839 W/kg  
Power Drift-Finish: 0.827 W/kg  
Power Drift (%) : -1.430  
Picture :



1 gram SAR value : 0.847 W/kg  
10 gram SAR value : 0.491 W/kg  
Area Scan Peak SAR : 1.079 W/kg  
Zoom Scan Peak SAR : 1.531 W/kg

■ **5260 MHz, EUT Position: Tablet, SP, 1880 GSM**

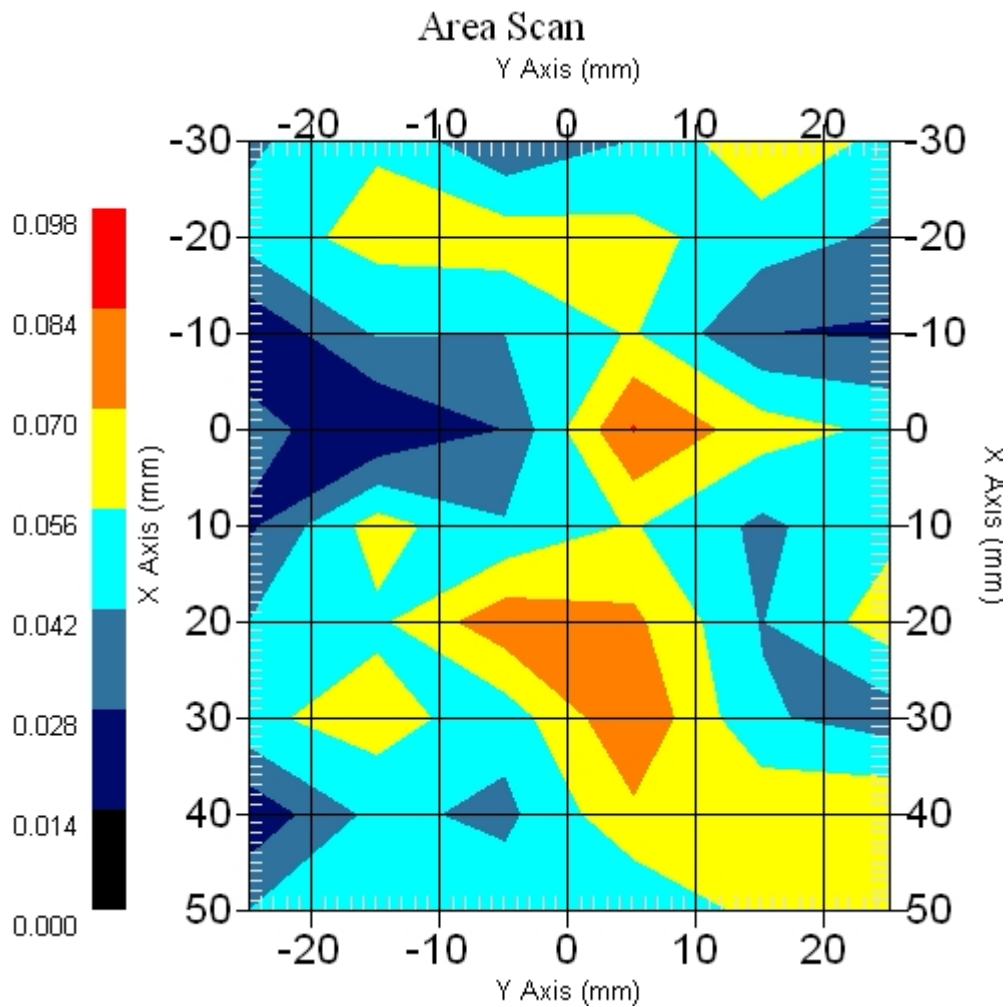
Measurement Data

Crest Factor : 1  
Scan Type : Complete  
Area Scan : 9x6x1 : Measurement x=10mm, y=10mm, z=4mm  
Zoom Scan : 9x9x13 : Measurement x=4mm, y=4mm, z=2.5mm

Other Data

DUT Position : Touch  
Separation : 0  
Channel : Mid - 5260MHz

Power Drift-Start : 0.078 W/kg  
Power Drift-Finish: 0.075 W/kg  
Power Drift (%) : -3.846  
Picture :



1 gram SAR value : 0.114 W/kg  
10 gram SAR value : 0.105 W/kg  
Area Scan Peak SAR : 0.085 W/kg  
Zoom Scan Peak SAR : 0.070 W/kg

■ 5260 MHz, EUT Position: Tablet, SP, 1880 GSM

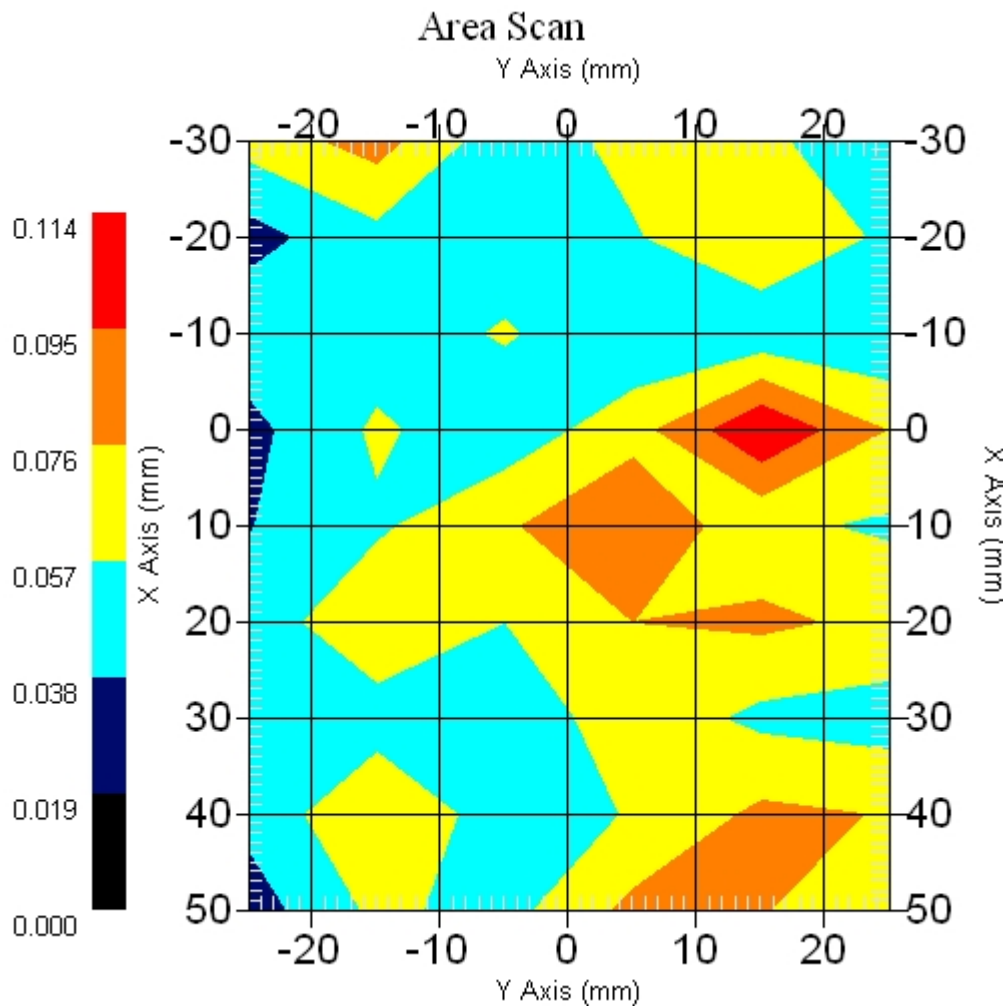
Measurement Data

Crest Factor : 1  
Scan Type : Complete  
Area Scan : 9x6x1 : Measurement x=10mm, y=10mm, z=4mm  
Zoom Scan : 9x9x13 : Measurement x=4mm, y=4mm, z=2.5mm

Other Data

DUT Position : Touch  
Separation : 0  
Channel : Mid - 5260MHz

Power Drift-Start : 0.070 W/kg  
Power Drift-Finish: 0.072 W/kg  
Power Drift (%) : 3.281  
Picture :

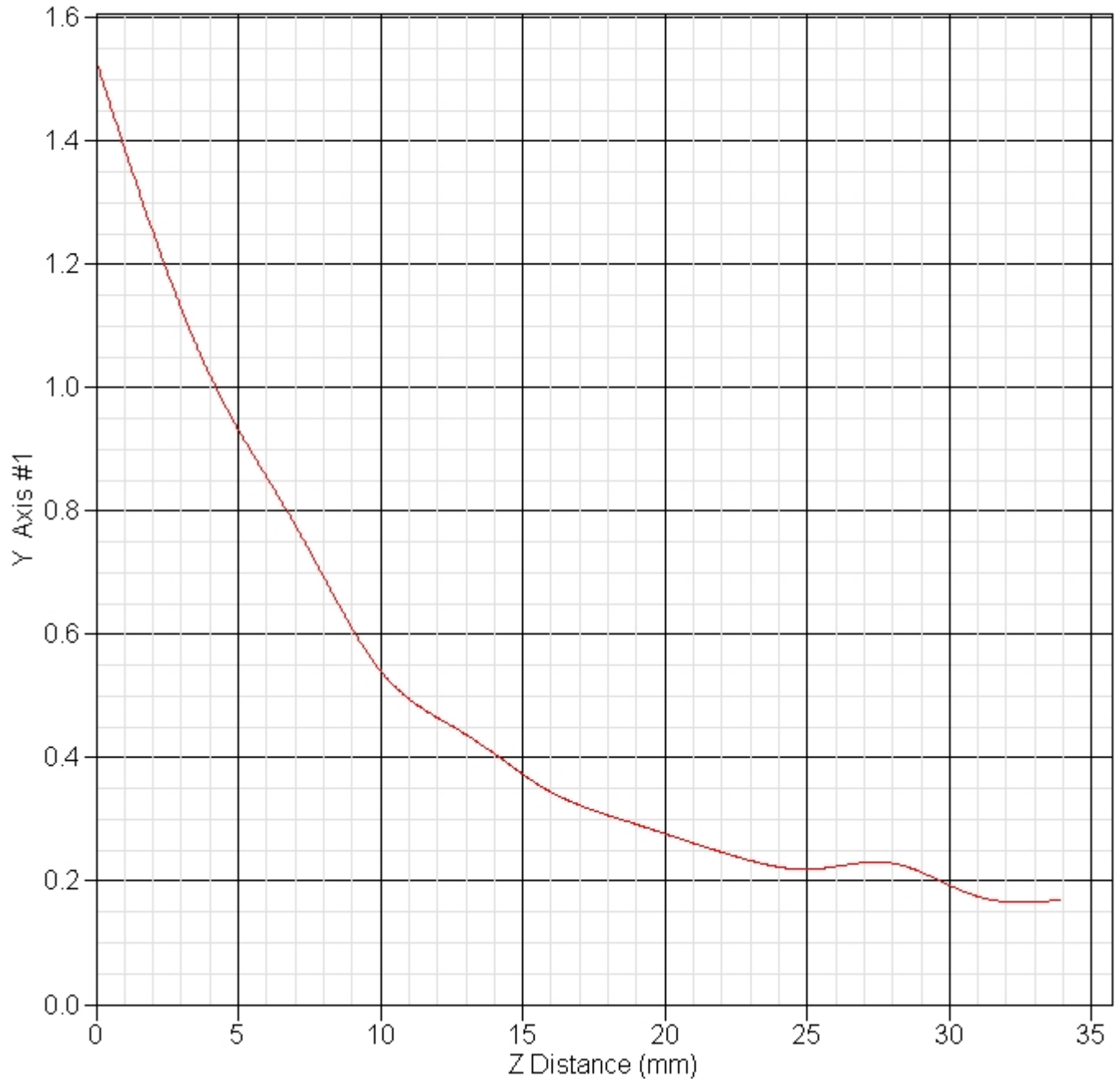


1 gram SAR value : 0.212 W/kg  
10 gram SAR value : 0.189 W/kg  
Area Scan Peak SAR : 0.112 W/kg  
Zoom Scan Peak SAR : 0.430 W/kg

■ Z Axis : 802.11a 5260 MHz, Position: Tablet SP, 1880 GSM

SAR-Z Axis

at Hotspot x:20.20 y:-5.00





### 13.2 802.11a (5150 ~ 5350MHz)+ Akita (GSM, EGSM) : FCCID N7NMC8755 +Bluetooth

#### ■ 5260 MHz Only, EUT Position: Laptop

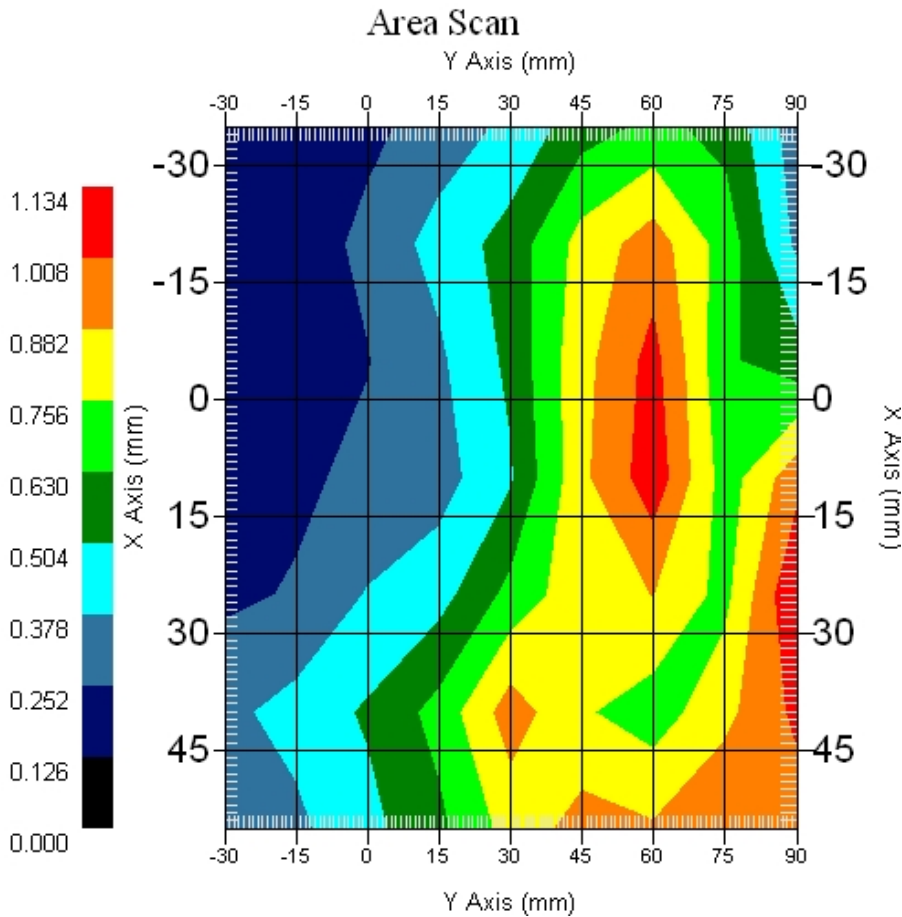
Measurement Data

Crest Factor : 1  
 Scan Type : Complete  
 Area Scan : 7x7x1 : Measurement x=15mm, y=15mm, z=4mm  
 Zoom Scan : 9x9x13 : Measurement x=4mm, y=4mm, z=2.5mm

Other Data

DUT Position : Touch  
 Separation : 0  
 Channel : Mid - 5260MHz

Power Drift-Start : 0.069 W/kg  
 Power Drift-Finish: 0.072 W/kg  
 Power Drift (%) : 4.347  
 Picture : (No picture)



1 gram SAR value : 0.095 W/kg  
 10 gram SAR value : 0.072 W/kg  
 Area Scan Peak SAR : 0.116 W/kg  
 Zoom Scan Peak SAR : 0.194 W/kg

■ **EUT Position: Laptop, 836 GSM Only**

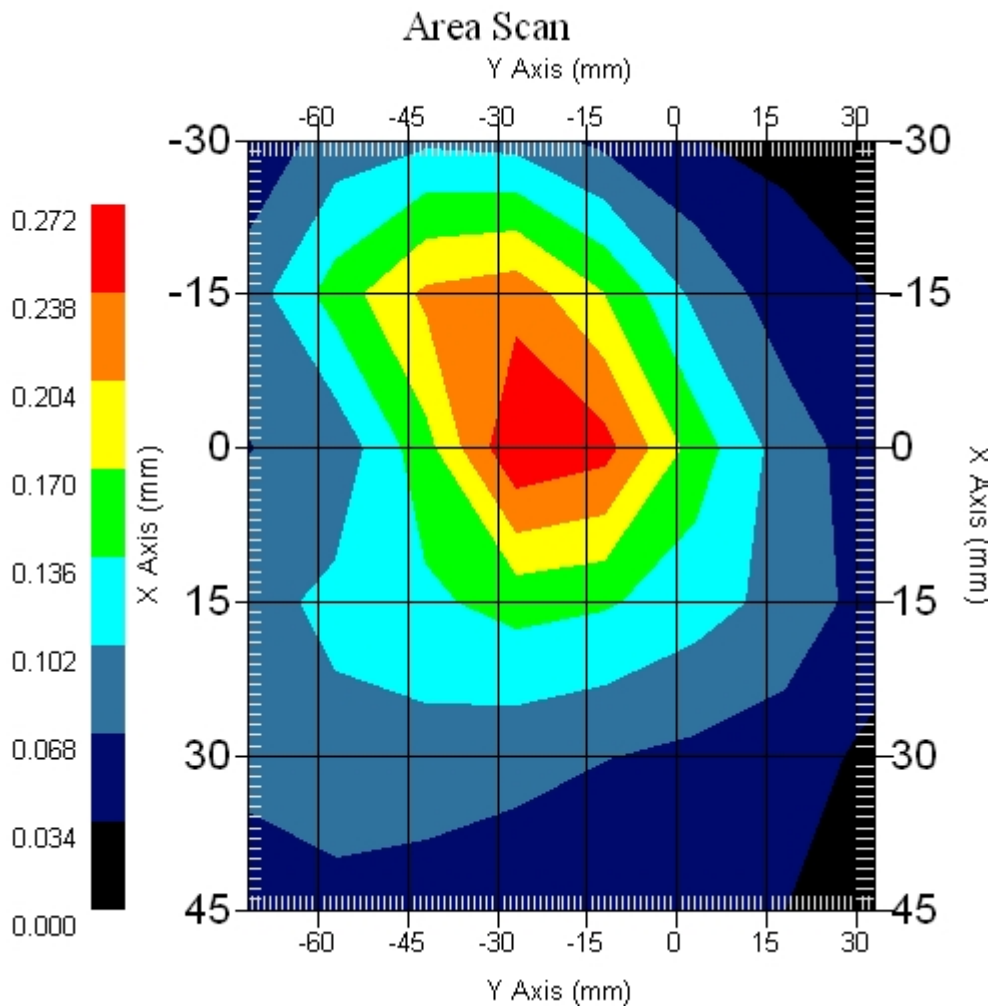
Measurement Data

Crest Factor : 1  
Scan Type : Complete  
Area Scan : 6x8x1 : Measurement x=15mm, y=15mm, z=4mm  
Zoom Scan : 5x5x8 : Measurement x=8mm, y=8mm, z=4mm

Other Data

DUT Position : Touch  
Separation : 0  
Channel : Mid - 800MHz

Power Drift-Start : 0.172 W/kg  
Power Drift-Finish: 0.176 W/kg  
Power Drift (%) : 2.325  
Picture :



1 gram SAR value : 0.260 W/kg  
10 gram SAR value : 0.165 W/kg  
Area Scan Peak SAR : 0.270 W/kg  
Zoom Scan Peak SAR : 0.390 W/kg

■ 5260 MHz Only, EUT Position: Laptop

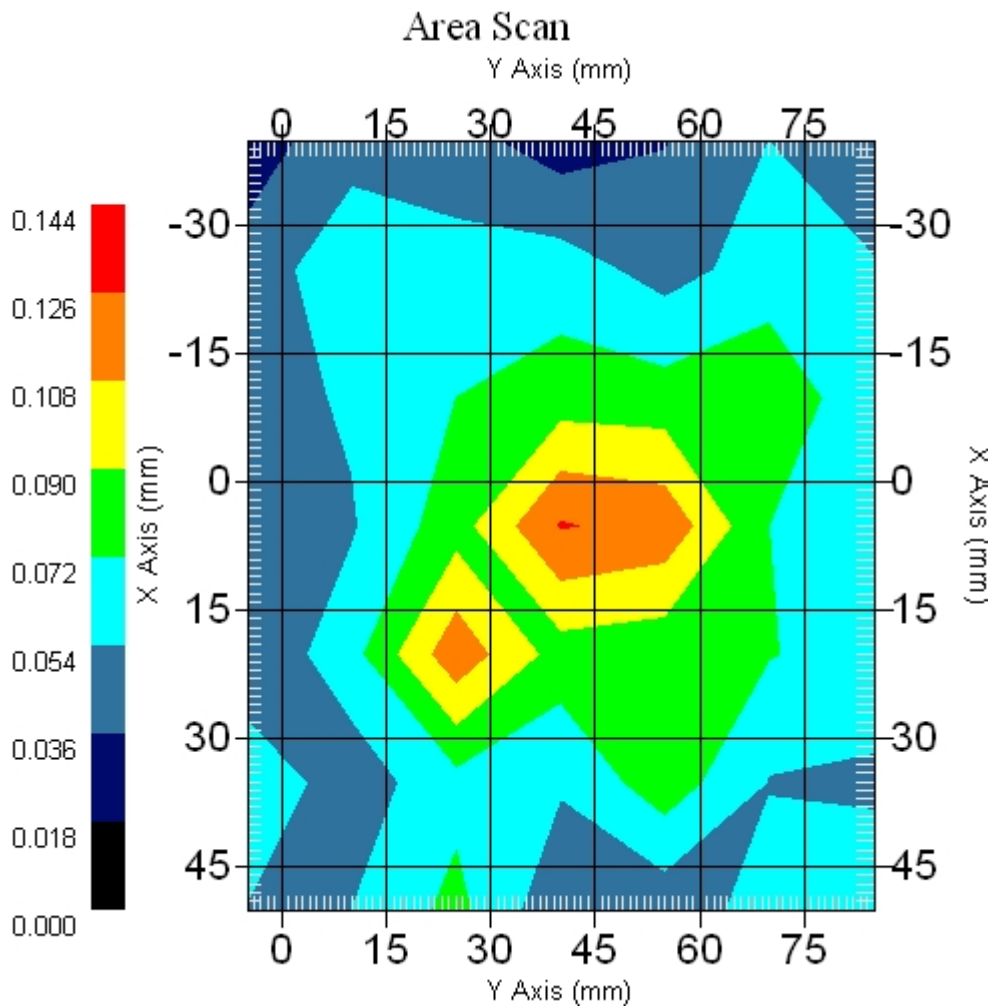
Measurement Data

Crest Factor : 1  
Scan Type : Complete  
Area Scan : 7x7x1 : Measurement x=15mm, y=15mm, z=4mm  
Zoom Scan : 9x9x13 : Measurement x=4mm, y=4mm, z=2.5mm

Other Data

DUT Position : Touch  
Separation : 0  
Channel : Mid - 5260MHz

Power Drift-Start : 0.067 W/kg  
Power Drift-Finish: 0.070 W/kg  
Power Drift (%) : 4.477  
Picture : (No picture)



1 gram SAR value : 0.124 W/kg  
10 gram SAR value : 0.095 W/kg  
Area Scan Peak SAR : 0.127 W/kg  
Zoom Scan Peak SAR : 0.210 W/kg

■ **5260 MHz, EUT Position: Tablet, PL, 836 GSM**

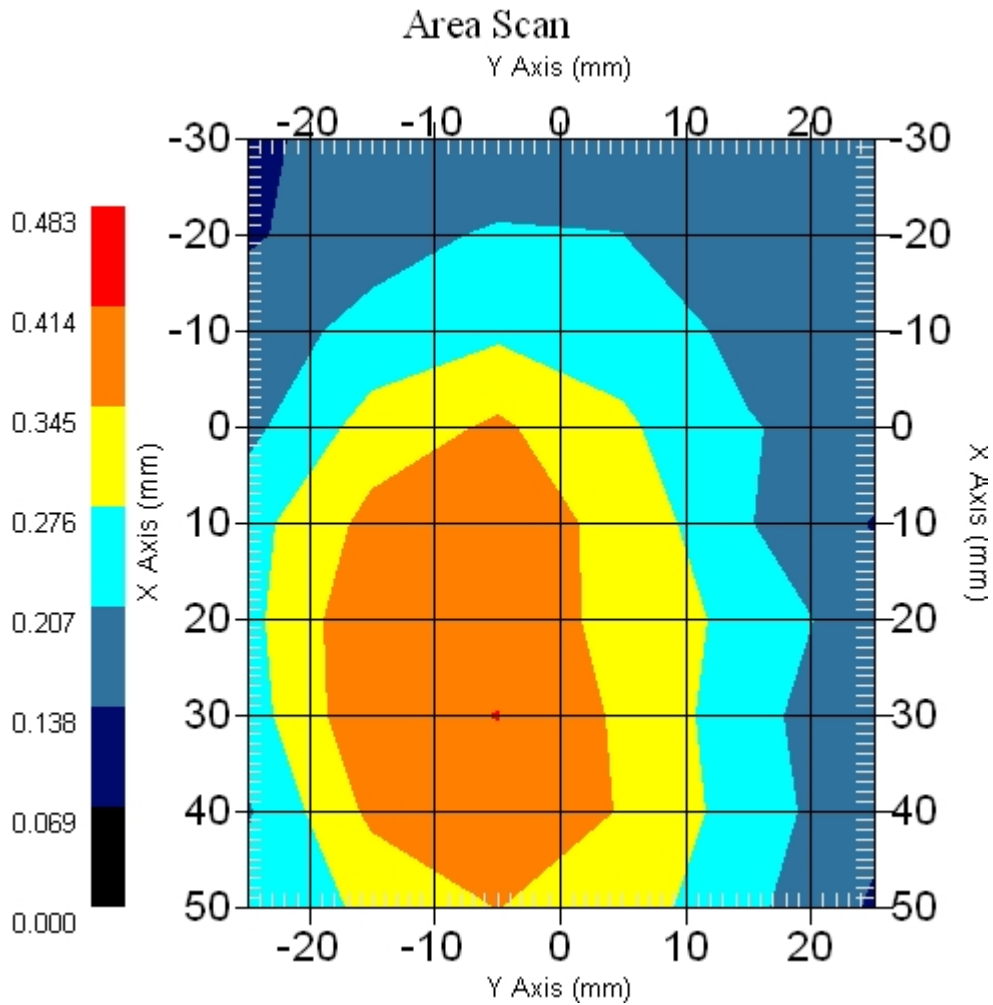
Measurement Data

Crest Factor : 1  
Scan Type : Complete  
Area Scan : 9x6x1 : Measurement x=10mm, y=10mm, z=4mm  
Zoom Scan : 9x9x13 : Measurement x=4mm, y=4mm, z=2.5mm

Other Data

DUT Position : Touch  
Separation : 0  
Channel : Mid - 5260MHz

Power Drift-Start : 0.319 W/kg  
Power Drift-Finish: 0.305 W/kg  
Power Drift (%) : -4.388  
Picture :



1 gram SAR value : 0.424 W/kg  
10 gram SAR value : 0.339 W/kg  
Area Scan Peak SAR : 0.415 W/kg  
Zoom Scan Peak SAR : 0.720 W/kg