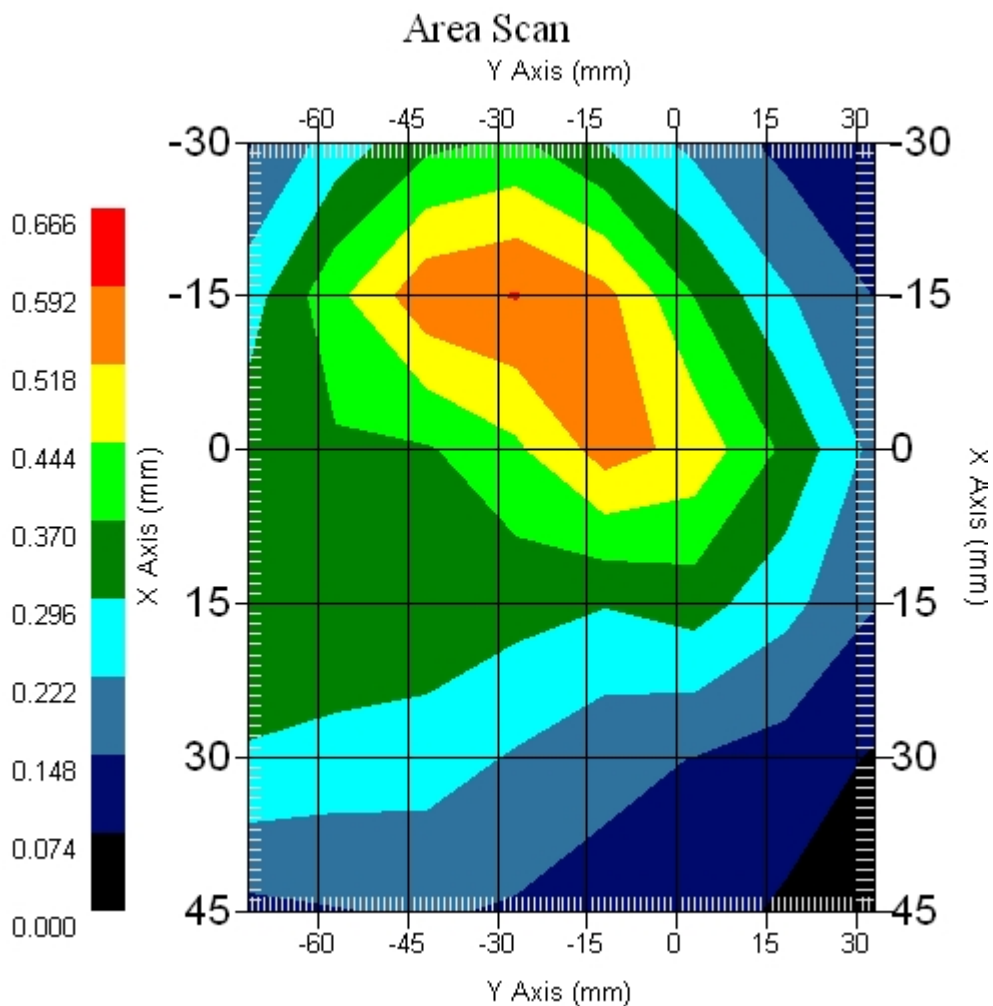


### 12.3 802.11g + WWAN Tosa (EV-DO) : FCCID N7N-MC5720 + Bluetooth

#### ■ 2437 MHz, EUT Position: Laptop 836 EV-DO

Measurement Data

Crest Factor : 1  
 Scan Type : Complete  
 Area Scan : 6x8x1 : Measurement x=15mm, y=15mm, z=4mm  
 Zoom Scan : 5x5x8 : Measurement x=8mm, y=8mm, z=4mm  
 Other Data  
 DUT Position : Touch  
 Separation : 0  
 Channel : Mid - 2437MHz  
 Power Drift-Start : 0.494 W/kg  
 Power Drift-Finish: 0.511 W/kg  
 Power Drift (%) : 3.441



1 gram SAR value : 0.576 W/kg  
 10 gram SAR value : 0.419 W/kg  
 Area Scan Peak SAR : 0.595 W/kg  
 Zoom Scan Peak SAR : 0.790 W/kg

■ 2437 MHz, EUT Position: Laptop 836 EV-DO

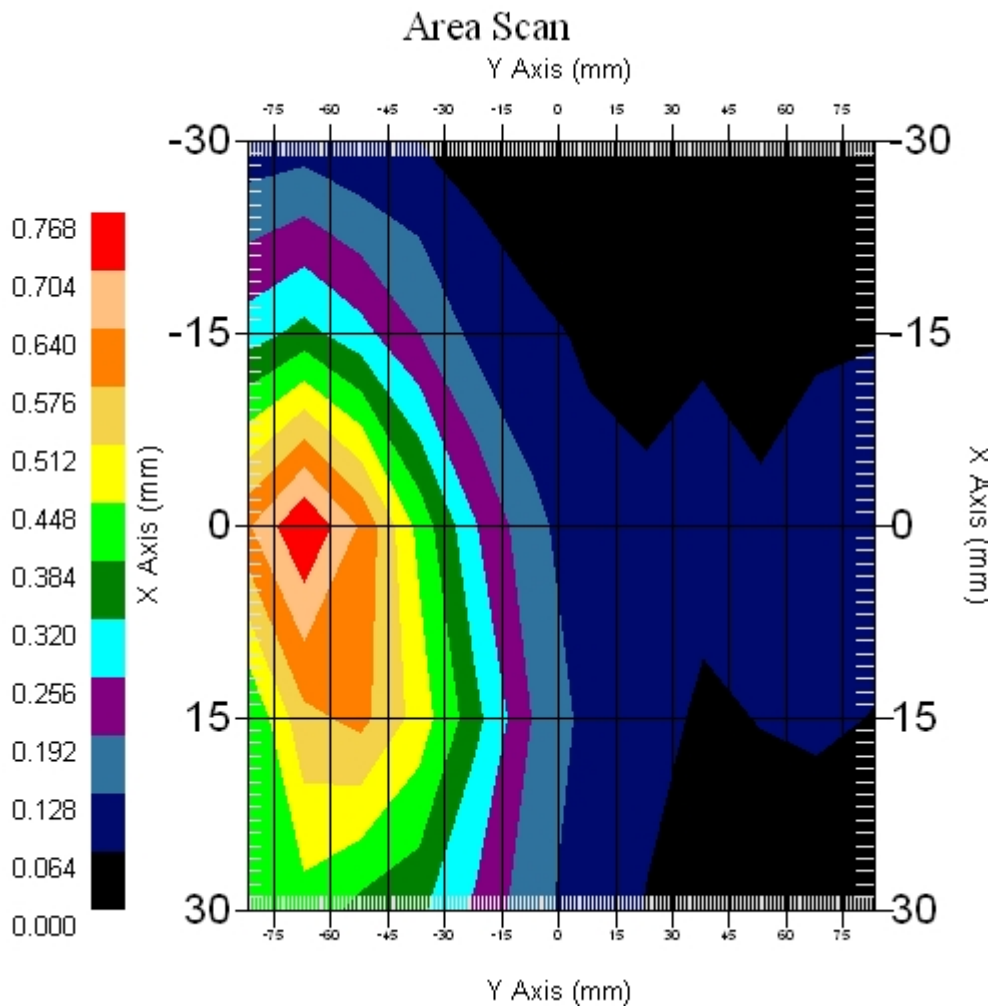
Measurement Data

Crest Factor : 1  
Scan Type : Complete  
Area Scan : 5x12x1 : Measurement x=15mm, y=15mm, z=4mm  
Zoom Scan : 5x5x8 : Measurement x=8mm, y=8mm, z=4mm

Other Data

DUT Position : Touch  
Separation : 0  
Channel : Mid - 2437MHz

Power Drift-Start : 0.102 W/kg  
Power Drift-Finish: 0.106 W/kg  
Power Drift (%) : 4.625



1 gram SAR value : 0.616 W/kg  
10 gram SAR value : 0.425 W/kg  
Area Scan Peak SAR : 0.765 W/kg  
Zoom Scan Peak SAR : 1.020 W/kg

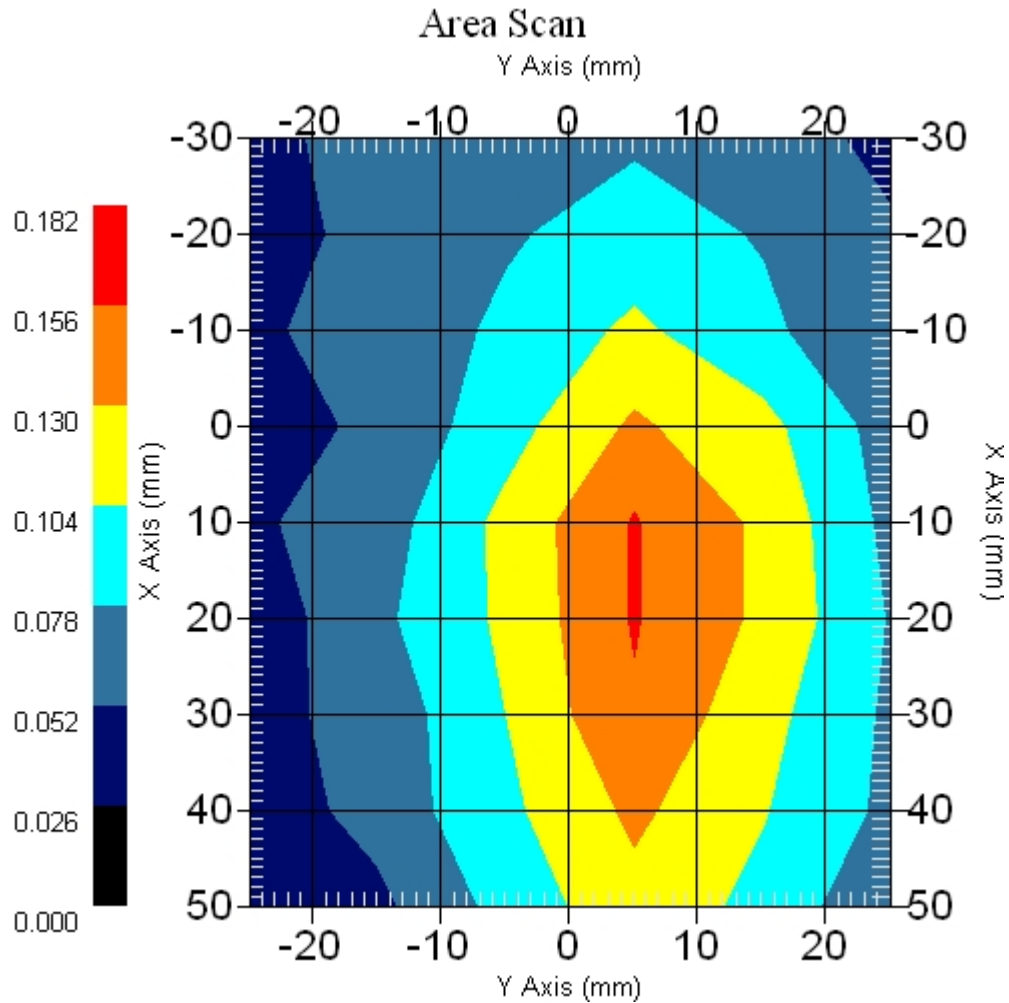
■ 2437 MHz, EUT Position: **Tablet,PL 836 EV-DO**

Measurement Data

Crest Factor : 1  
Scan Type : Complete  
Area Scan : 9x6x1 : Measurement x=10mm, y=10mm, z=4mm  
Zoom Scan : 5x5x8 : Measurement x=8mm, y=8mm, z=4mm

DUT Position : Touch  
Separation : 0  
Channel : Mid - 2437MHz

Power Drift-Start : 0.125 W/kg  
Power Drift-Finish: 0.122 W/kg  
Power Drift (%) : -2.659



1 gram SAR value : 0.151 W/kg  
10 gram SAR value : 0.111 W/kg  
Area Scan Peak SAR : 0.158 W/kg  
Zoom Scan Peak SAR : 0.230 W/kg

■ 2437 MHz, EUT Position: Tablet,PP 836 EV-DO

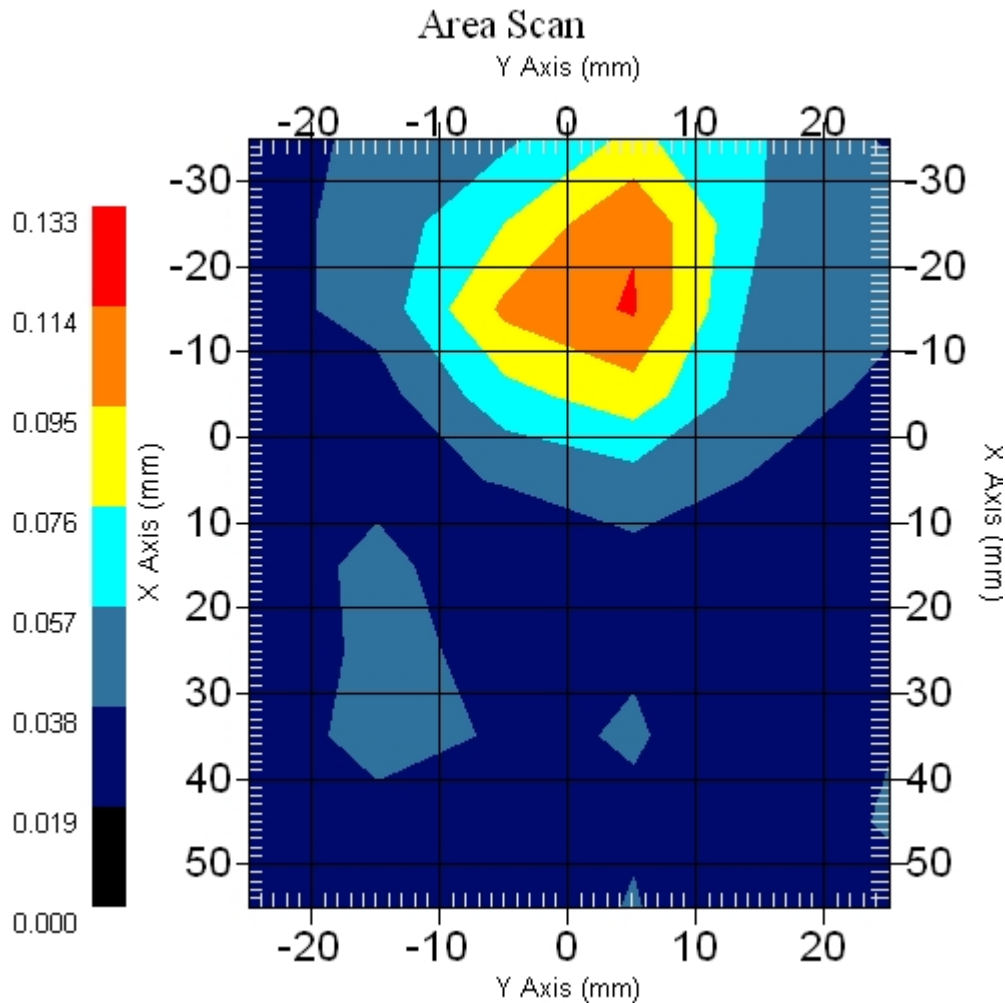
Measurement Data

Crest Factor : 1  
Scan Type : Complete  
Area Scan : 10x6x1 : Measurement x=10mm, y=10mm, z=4mm  
Zoom Scan : 5x5x8 : Measurement x=8mm, y=8mm, z=4mm

Other Data

DUT Position : Touch  
Separation : 0  
Channel : Mid - 2437MHz

Power Drift-Start : 0.080 W/kg  
Power Drift-Finish: 0.076 W/kg  
Power Drift (%) : -5.000



1 gram SAR value : 0.116 W/kg  
10 gram SAR value : 0.065 W/kg  
Area Scan Peak SAR : 0.116 W/kg  
Zoom Scan Peak SAR : 0.210 W/kg

■ 2437 MHz, EUT Position: Tablet,SL 836 EV-DO

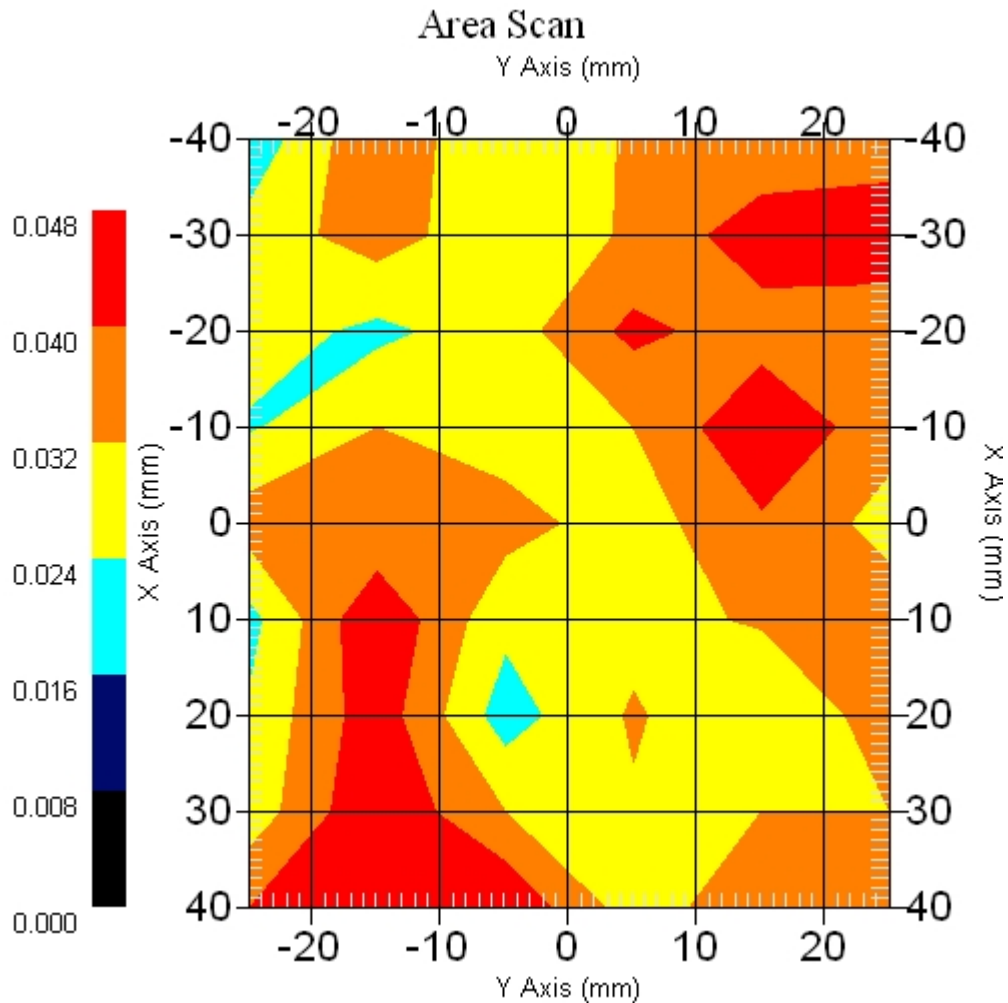
Measurement Data

Crest Factor : 1  
Scan Type : Complete  
Area Scan : 9x6x1 : Measurement x=10mm, y=10mm, z=4mm  
Zoom Scan : 5x5x8 : Measurement x=8mm, y=8mm, z=4mm

Other Data

DUT Position : Touch  
Separation : 0  
Channel : Mid - 2437MHz

Power Drift-Start : 0.027 W/kg  
Power Drift-Finish: 0.026 W/kg  
Power Drift (%) : -3.057



1 gram SAR value : 0.051 W/kg  
10 gram SAR value : 0.039 W/kg  
Area Scan Peak SAR : 0.048 W/kg  
Zoom Scan Peak SAR : 0.070 W/kg

■ 2437 MHz, EUT Position: Tablet,SP 836 EV-DO

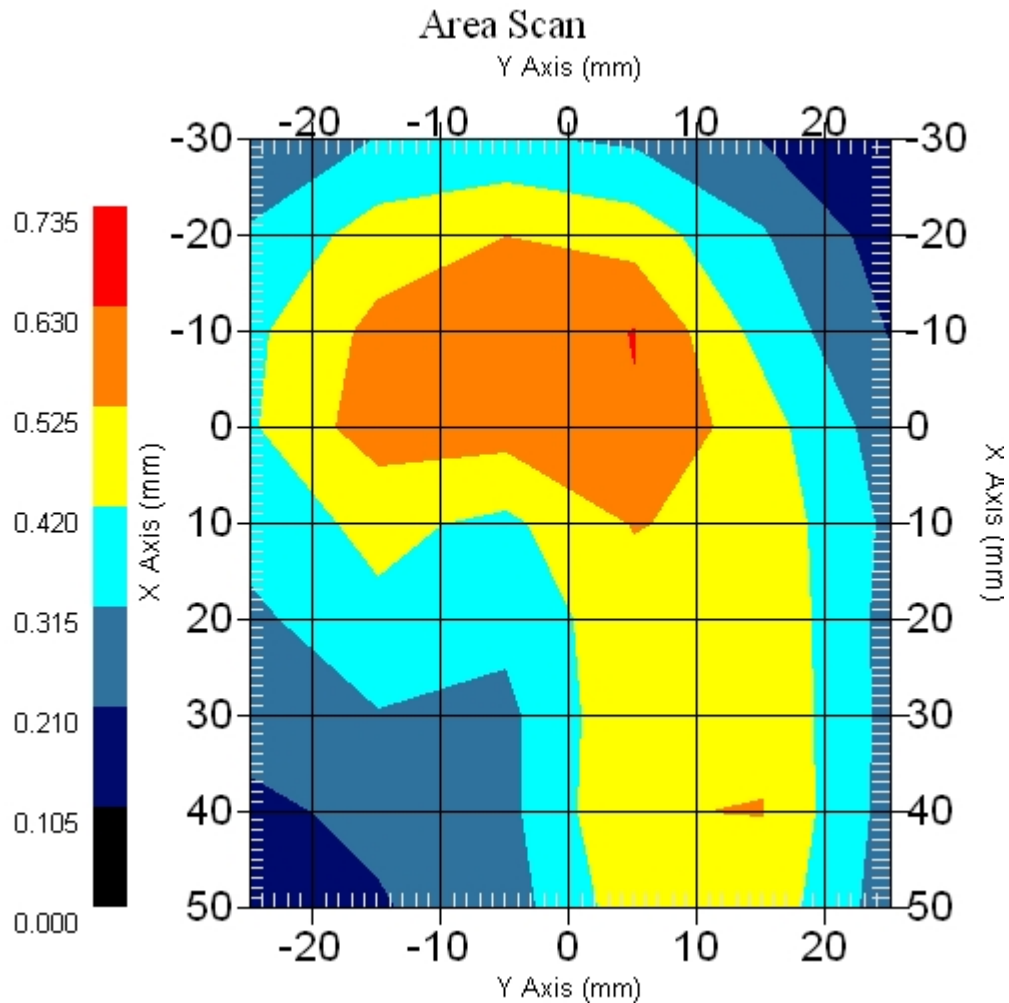
Measurement Data

Crest Factor : 1  
Scan Type : Complete  
Area Scan : 9x6x1 : Measurement x=10mm, y=10mm, z=4mm  
Zoom Scan : 5x5x8 : Measurement x=8mm, y=8mm, z=4mm

Other Data

DUT Position : Touch  
Separation : 0  
Channel : Mid - 2437MHz

Power Drift-Start : 0.551 W/kg  
Power Drift-Finish: 0.560 W/kg  
Power Drift (%) : 1.715



1 gram SAR value : 0.625 W/kg  
10 gram SAR value : 0.431 W/kg  
Area Scan Peak SAR : 0.631 W/kg  
Zoom Scan Peak SAR : 0.920 W/kg

■ 2437 MHz, EUT Position: Tablet,PL 1880 EV-DO

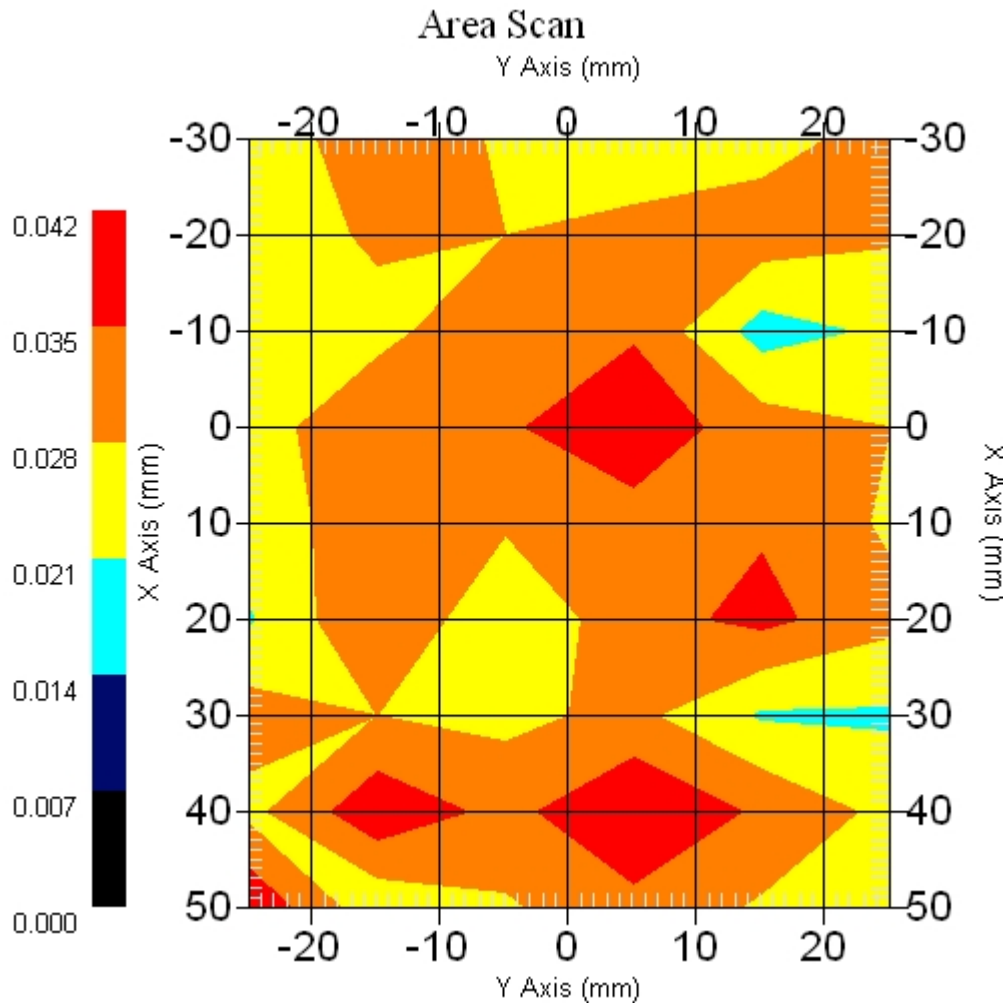
Measurement Data

Crest Factor : 1  
Scan Type : Complete  
Area Scan : 9x6x1 : Measurement x=10mm, y=10mm, z=4mm  
Zoom Scan : 5x5x8 : Measurement x=8mm, y=8mm, z=4mm

Other Data

DUT Position : Touch  
Separation : 0  
Channel : Mid - 2437MHz

Power Drift-Start : 0.044 W/kg  
Power Drift-Finish: 0.043 W/kg  
Power Drift (%) : -2.272



1 gram SAR value : 0.051 W/kg  
10 gram SAR value : 0.038 W/kg  
Area Scan Peak SAR : 0.041 W/kg  
Zoom Scan Peak SAR : 0.110 W/kg

■ 2437 MHz, EUT Position: Tablet,PP 1880 EV-DO

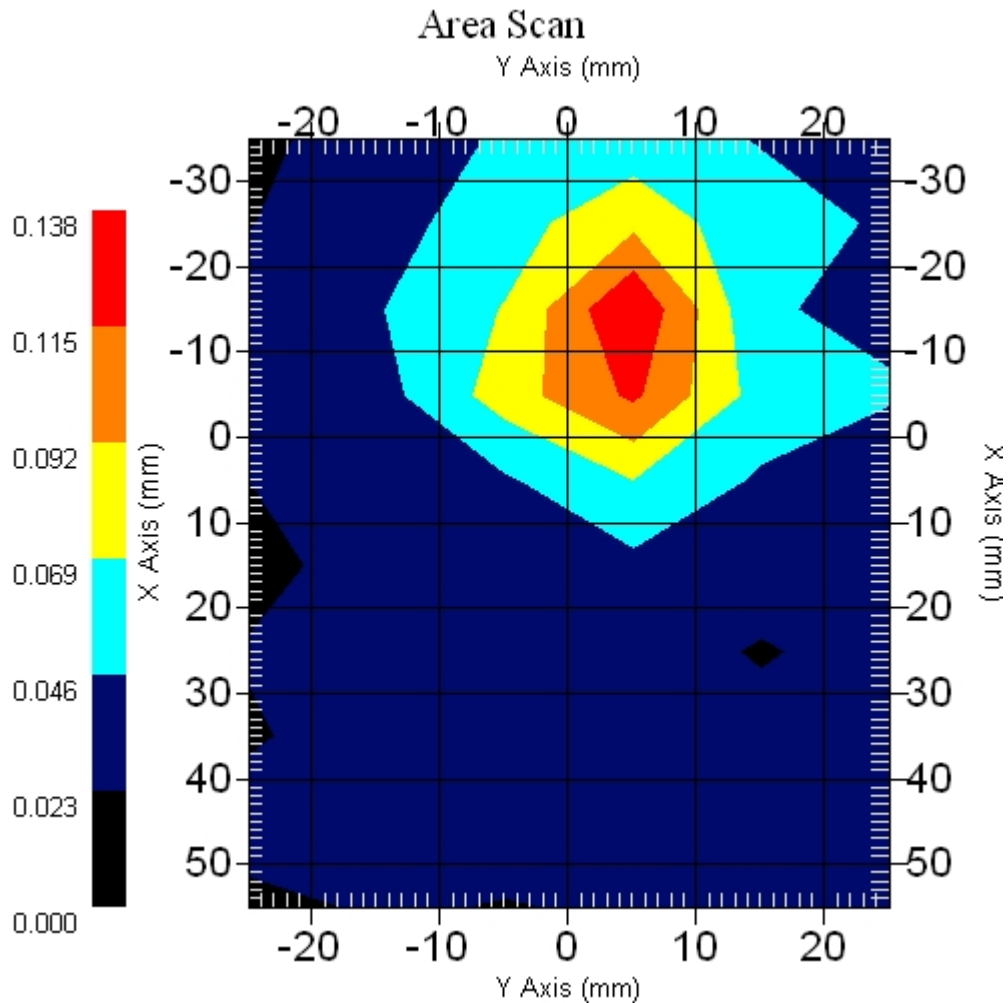
Measurement Data

Crest Factor : 1  
Scan Type : Complete  
Area Scan : 10x6x1 : Measurement x=10mm, y=10mm, z=4mm  
Zoom Scan : 5x5x8 : Measurement x=8mm, y=8mm, z=4mm

Other Data

DUT Position : Touch  
Separation : 0  
Channel : Mid - 2437MHz

Power Drift-Start : 0.099 W/kg  
Power Drift-Finish: 0.103 W/kg  
Power Drift (%) : 4.040



1 gram SAR value : 0.114 W/kg  
10 gram SAR value : 0.064 W/kg  
Area Scan Peak SAR : 0.137 W/kg  
Zoom Scan Peak SAR : 0.210 W/kg



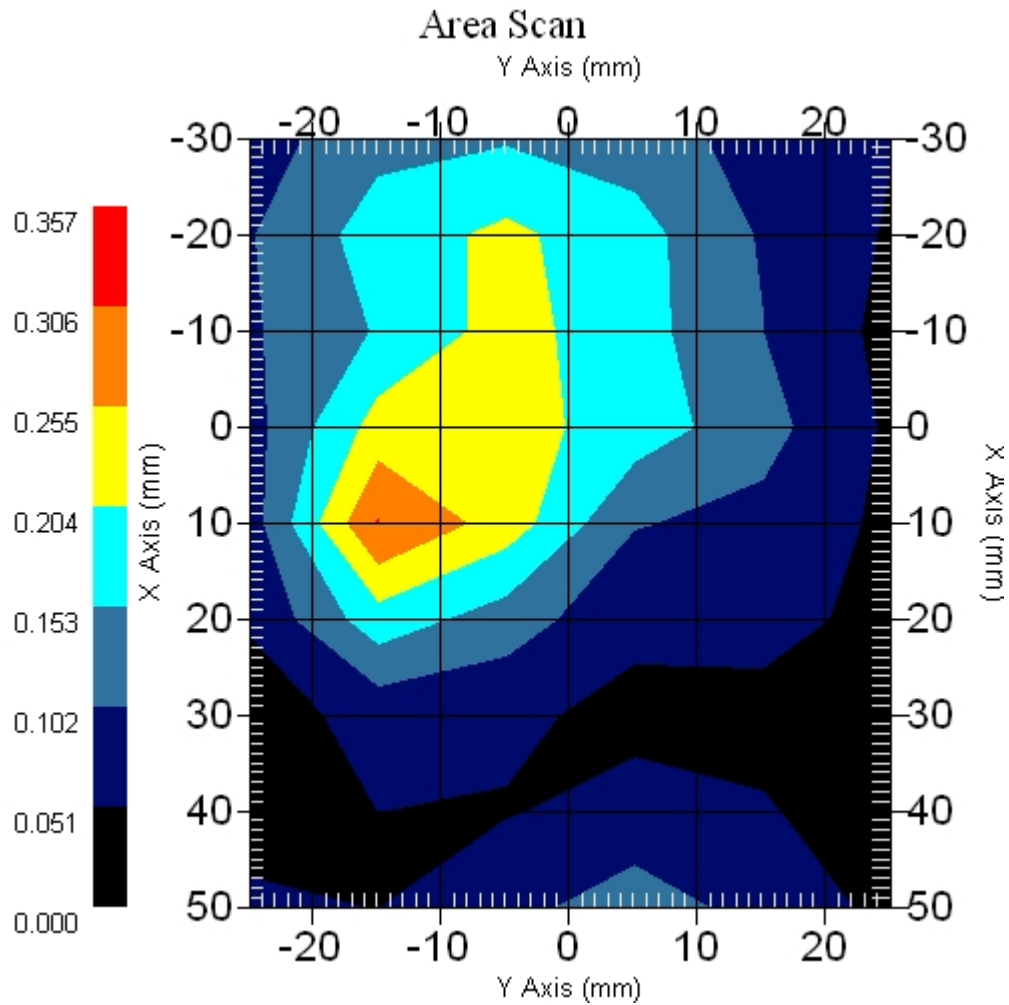
■ 2437 MHz, EUT Position: Tablet,SP 1880 EV-DO

Measurement Data

Crest Factor : 1  
Scan Type : Complete  
Area Scan : 9x6x1 : Measurement x=10mm, y=10mm, z=4mm  
Zoom Scan : 5x5x8 : Measurement x=8mm, y=8mm, z=4mm

DUT Position : Touch  
Separation : 0  
Channel : Mid - 2437MHz

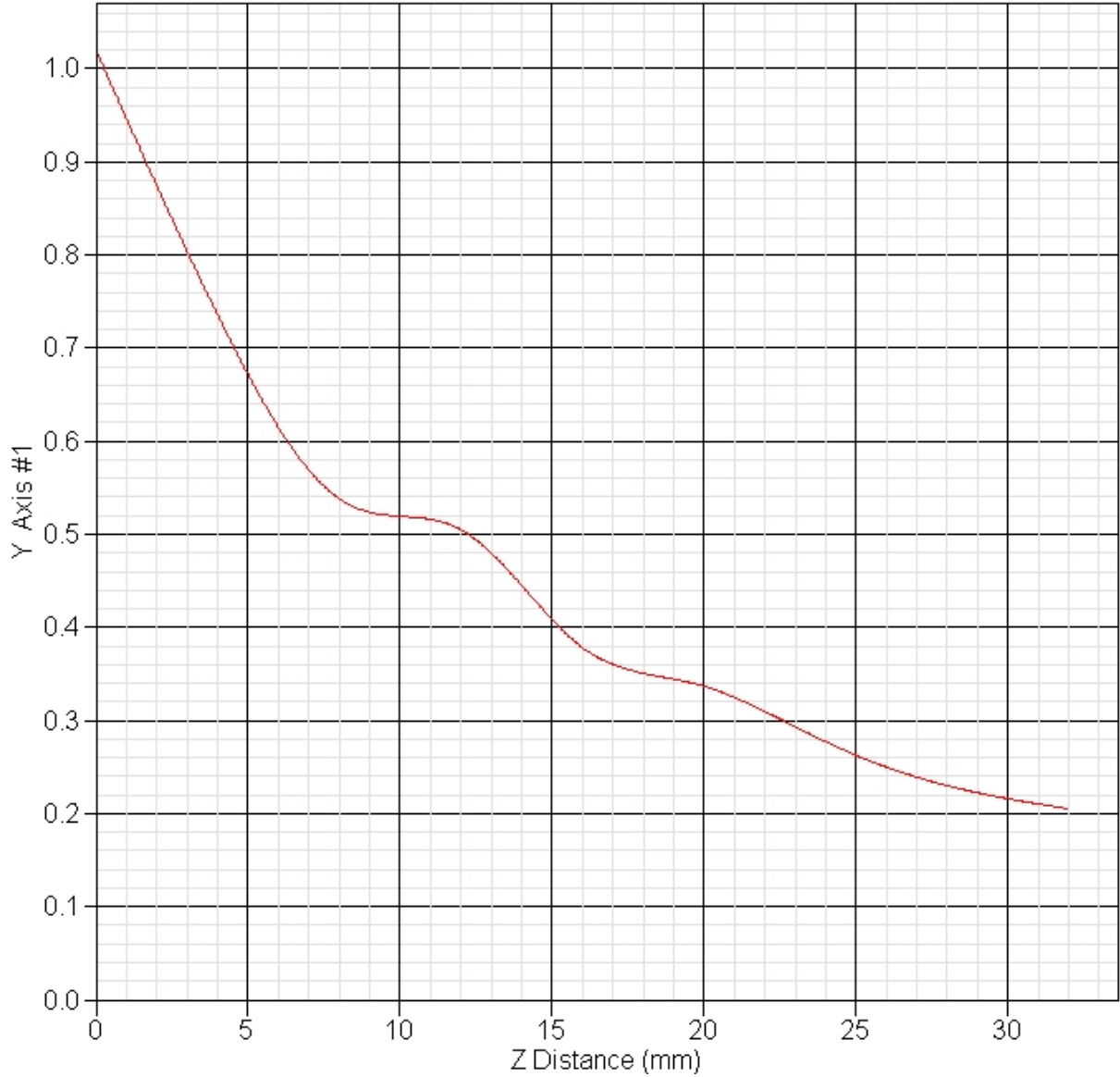
Power Drift-Start : 0.187 W/kg  
Power Drift-Finish: 0.190 W/kg  
Power Drift (%) : 1.604



1 gram SAR value : 0.223 W/kg  
10 gram SAR value : 0.134 W/kg  
Area Scan Peak SAR : 0.308 W/kg  
Zoom Scan Peak SAR : 0.400 W/kg

■ Z Axis 802.11g 2437MHz, Position: Laptop, TOSA 836 EV-DO

SAR-Z Axis  
at Hotspot x:8.40 y:-59.00



### 13. 802.11a (5150 ~5350MHz) SAR measurement Data

#### 13.1 802.11a (5150 ~ 5350MHz) + Karafuto (GSM, EGSM, UMTS) : FCCID N7NMC8765 +Bluetooth

Measurement Date : 07-Aug-2006

##### Product Data

Device Name : Golan  
Serial No. : 11.a-Botton\_1-GSM800  
Type : Other  
Model : 1  
Frequency : 5260.00 MHz  
Max. Transmit Pwr : 0.032 W  
Drift Time : 0 min(s)  
Length : 230 mm  
Width : 270 mm  
Depth : 10 mm  
Antenna Type : Internal  
Orientation : Touch

##### Phantom Data

Name : APREL-Uni  
Type : Uni-Phantom  
Size (mm) : 280 x 280 x 200  
Serial No. : System Default  
Location : Center  
Description : uni\_1

##### Tissue Data

Type : BODY  
Serial No. : 5200-B-AU-18  
Frequency : 5200.00 MHz  
Last Calib. Date : 07-Aug-2006  
Temperature : 22.40 °C  
Ambient Temp. : 22.70 °C  
Humidity : 49.00 RH%  
Epsilon : 47.63 F/m  
Sigma : 5.47 S/m  
Density : 1000.00 kg/cu. m

##### Probe Data

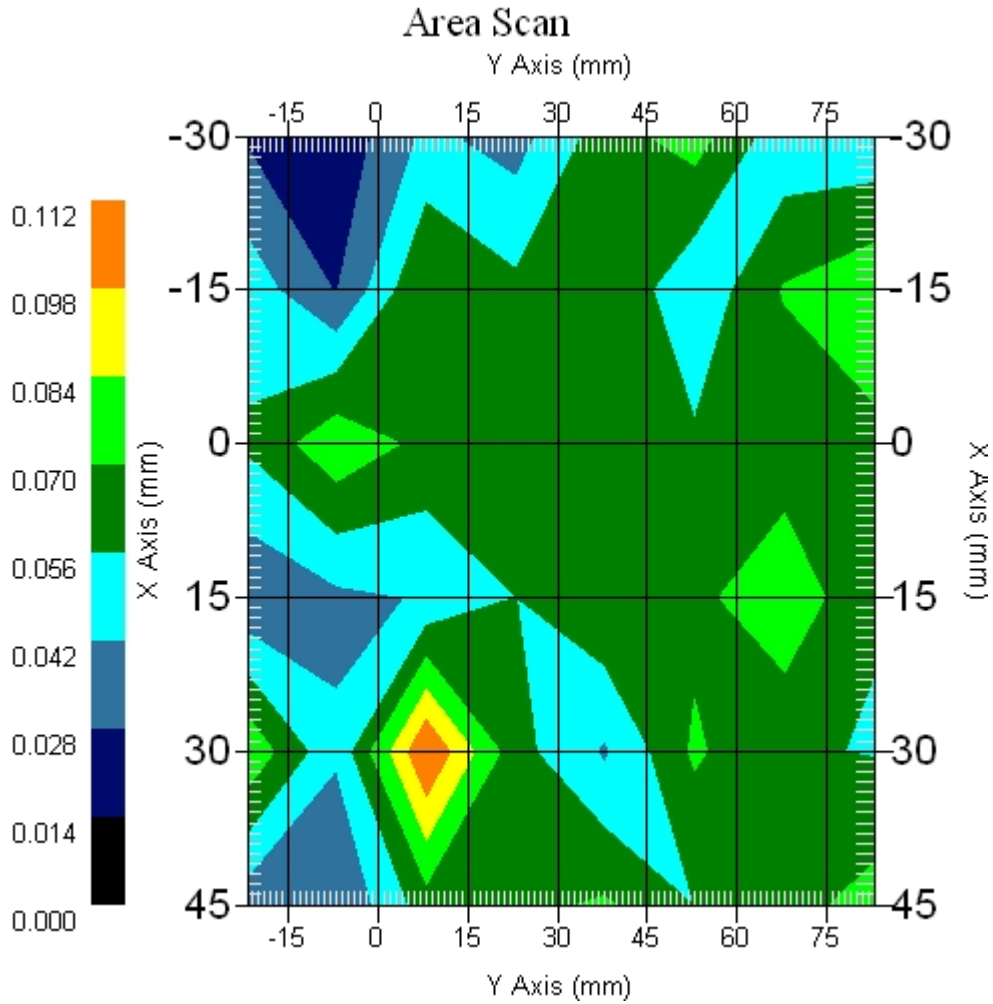
Name : E-field Probe  
Model : ALS-E-020  
Type : E-Field Triangle  
Serial No. : 266  
Last Calib. Date : 22-Jun-2006  
Frequency : 5200.00 MHz  
Duty Cycle Factor: 1  
Conversion Factor: 4.4  
Probe Sensitivity: 1.20 1.20 1.20  $\mu\text{V}/(\text{V}/\text{m})^2$   
Compression Point: 95.00 mV  
Offset : 1.56 mm

#### ■ 5260 MHz Only, EUT Position: Laptop

##### Measurement Data

Crest Factor : 1  
Scan Type : Complete  
Area Scan : 6x8x1 : Measurement x=15mm, y=15mm, z=4mm  
Zoom Scan : 9x9x13 : Measurement x=4mm, y=4mm, z=2.5mm

Other Data  
DUT Position : Touch  
Separation : 0  
Channel : Mid - 5260MHz  
Power Drift-Start : 0.047 W/kg  
Power Drift-Finish: 0.048 W/kg  
Power Drift (%) : 2.127  
Picture :



1 gram SAR value : 0.155 W/kg  
10 gram SAR value : 0.100 W/kg  
Area Scan Peak SAR : 0.112 W/kg  
Zoom Scan Peak SAR : 0.230 W/kg

■ EUT Position: Laptop, 836 GSM Only

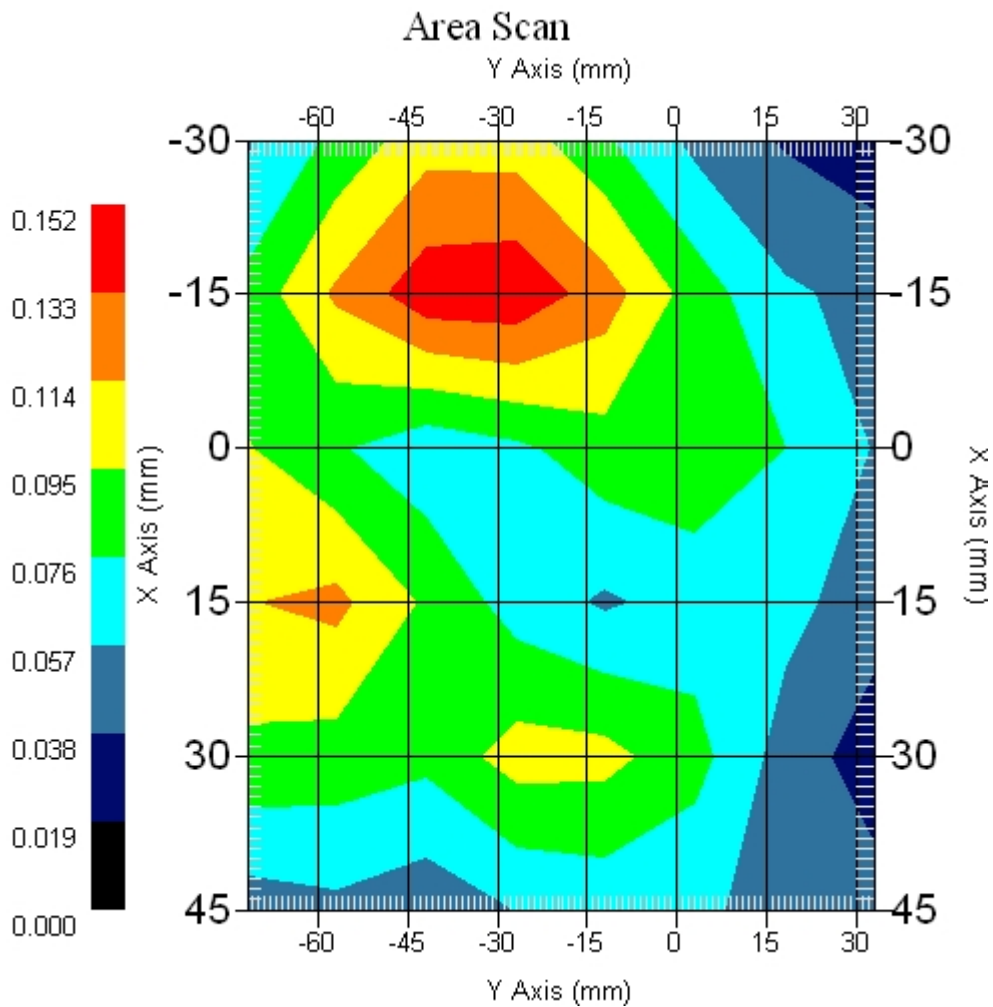
Measurement Data

Crest Factor : 1  
Scan Type : Complete  
Area Scan : 6x8x1 : Measurement x=15mm, y=15mm, z=4mm  
Zoom Scan : 5x5x8 : Measurement x=8mm, y=8mm, z=4mm

Other Data

DUT Position : Touch  
Separation : 0  
Channel : Mid - 800MHz

Power Drift-Start : 0.129 W/kg  
Power Drift-Finish: 0.129 W/kg  
Power Drift (%) : 0.012  
Picture :



1 gram SAR value : 0.173 W/kg  
10 gram SAR value : 0.111 W/kg  
Area Scan Peak SAR : 0.148 W/kg  
Zoom Scan Peak SAR : 0.260 W/kg

■ 5260 MHz Only, EUT Position: Laptop

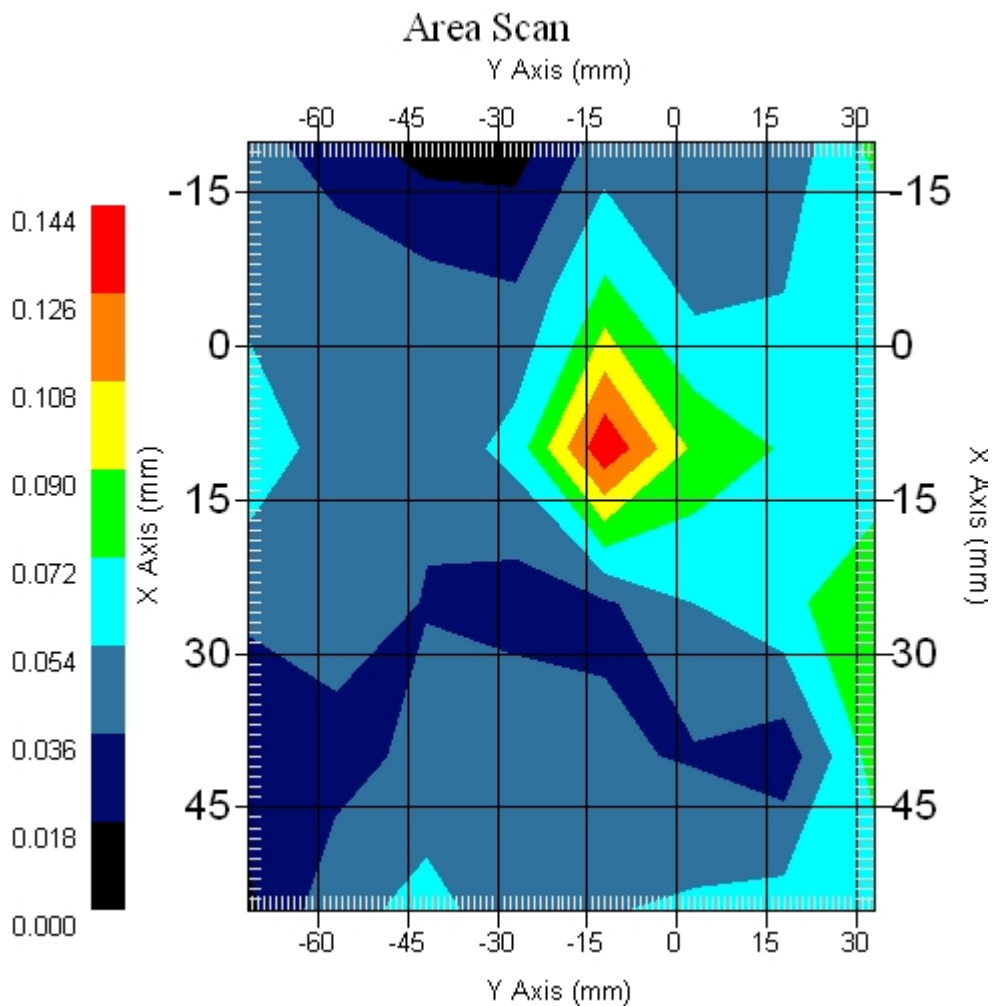
Measurement Data

Crest Factor : 1  
Scan Type : Complete  
Area Scan : 6x8x1 : Measurement x=15mm, y=15mm, z=4mm  
Zoom Scan : 9x9x13 : Measurement x=4mm, y=4mm, z=2.5mm

Other Data

DUT Position : Touch  
Separation : 0  
Channel : Mid - 5260MHz

Power Drift-Start : 0.050 W/kg  
Power Drift-Finish: 0.050 W/kg  
Power Drift (%) : 0.041  
Picture :



1 gram SAR value : 0.078 W/kg  
10 gram SAR value : 0.064 W/kg  
Area Scan Peak SAR : 0.140 W/kg  
Zoom Scan Peak SAR : 0.170 W/kg

■ 5260 MHz, EUT Position: Tablet, PL ,836GSM

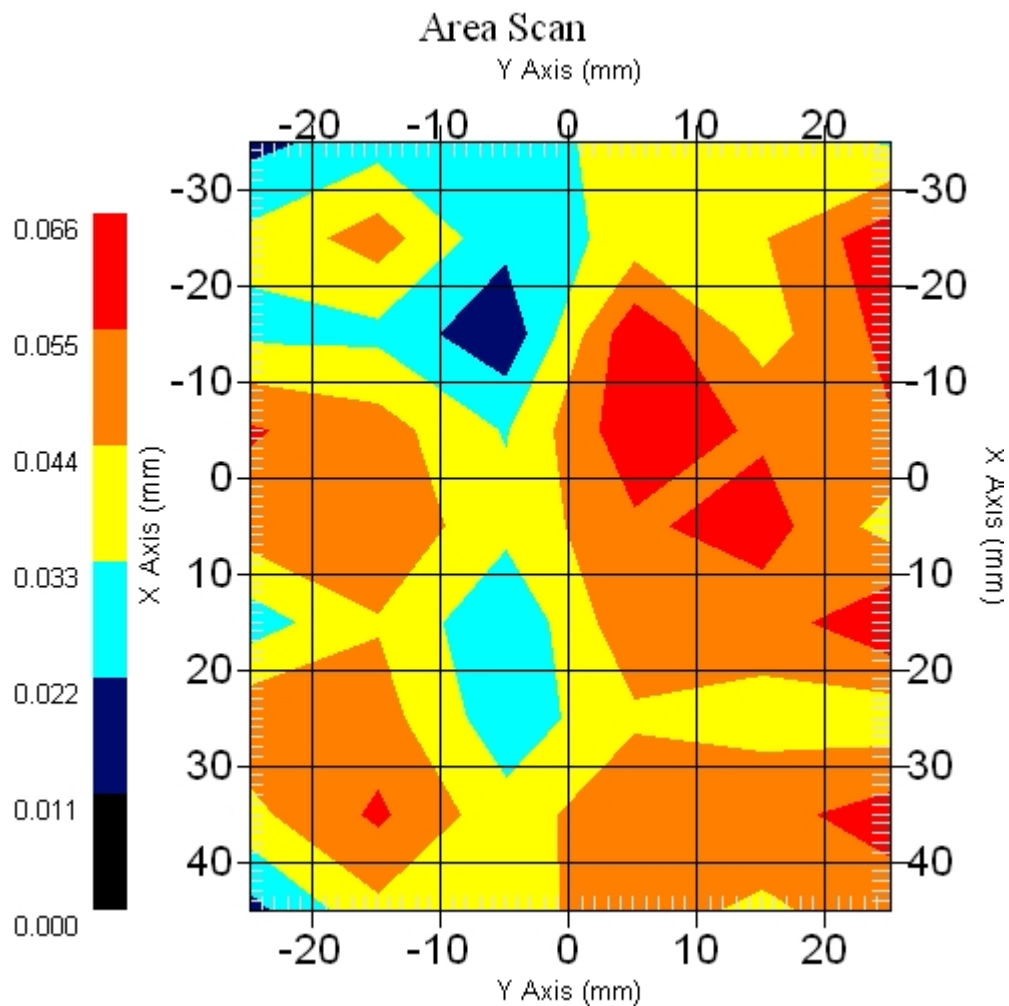
Measurement Data

Crest Factor : 1  
Scan Type : Complete  
Area Scan : 9x6x1 : Measurement x=10mm, y=10mm, z=4mm  
Zoom Scan : 9x9x13 : Measurement x=4mm, y=4mm, z=2.5mm

Other Data

DUT Position : Touch  
Separation : 0  
Channel : Mid - 5260MHz

Power Drift-Start : 0.054 W/kg  
Power Drift-Finish: 0.052 W/kg  
Power Drift (%) : -3.703  
Picture :



1 gram SAR value : 0.149 W/kg  
10 gram SAR value : 0.131 W/kg  
Area Scan Peak SAR : 0.064 W/kg  
Zoom Scan Peak SAR : 0.260 W/kg

■ 5260 MHz, EUT Position: Tablet, PP ,836GSM

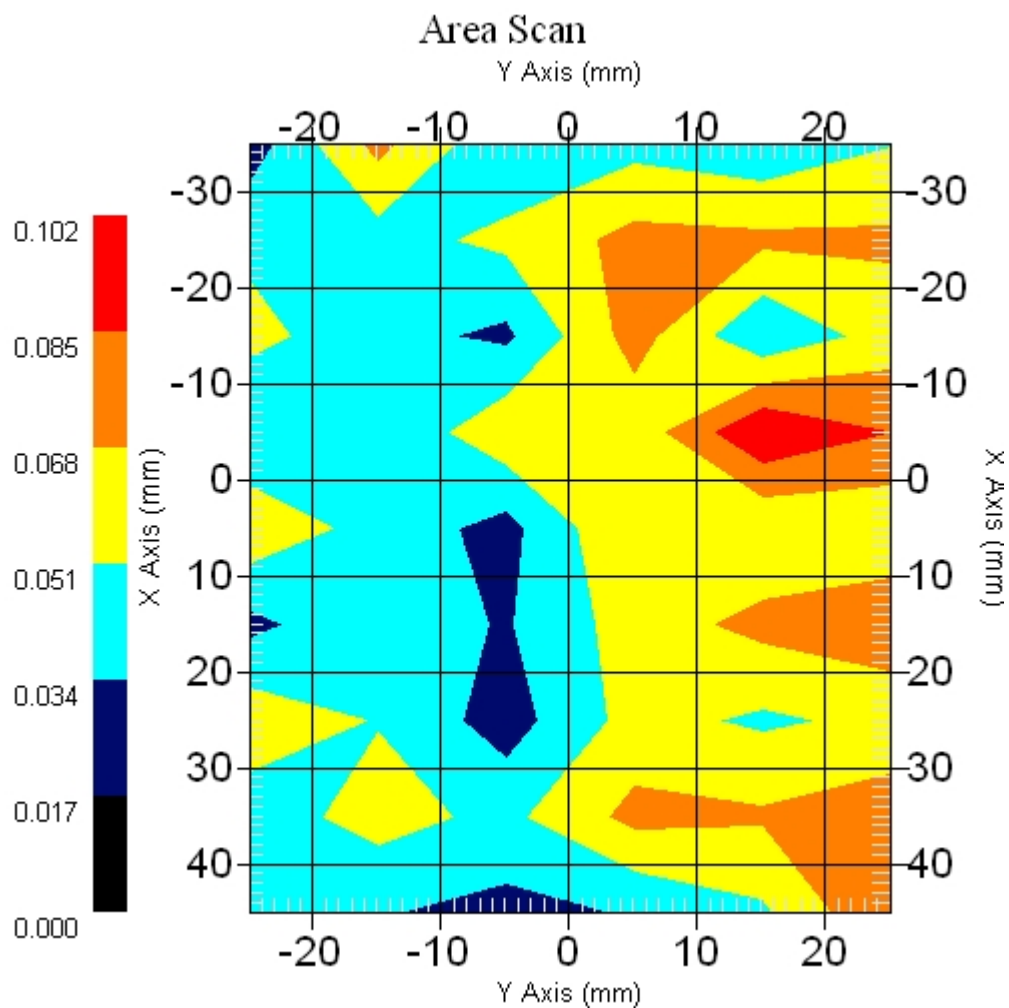
Measurement Data

Crest Factor : 1  
Scan Type : Complete  
Area Scan : 9x6x1 : Measurement x=10mm, y=10mm, z=4mm  
Zoom Scan : 9x9x13 : Measurement x=4mm, y=4mm, z=2.5mm

Other Data

DUT Position : Touch  
Separation : 0  
Channel : Mid - 5260MHz

Power Drift-Start : 0.061 W/kg  
Power Drift-Finish: 0.063 W/kg  
Power Drift (%) : 3.278  
Picture :



1 gram SAR value : 0.099 W/kg  
10 gram SAR value : 0.069 W/kg  
Area Scan Peak SAR : 0.100 W/kg  
Zoom Scan Peak SAR : 0.167 W/kg



■ 5260 MHz, EUT Position: Tablet, SL ,836GSM

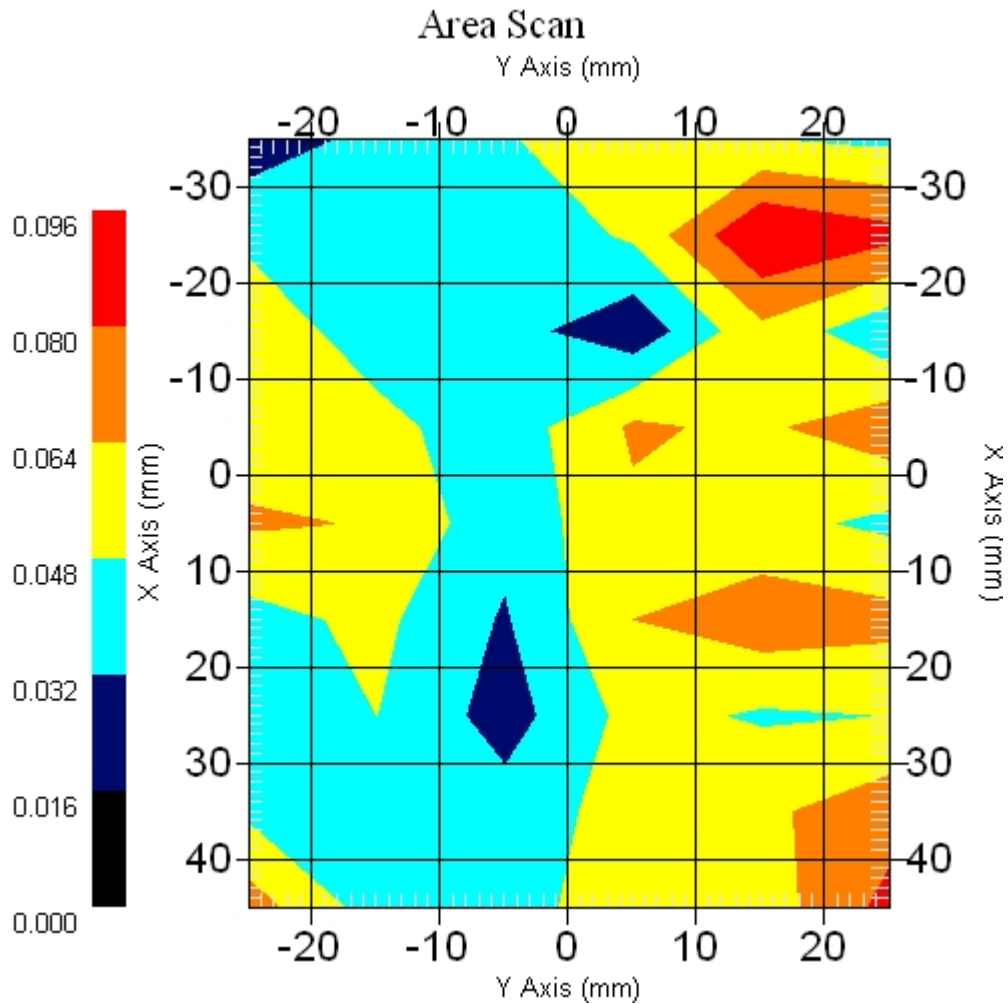
Measurement Data

Crest Factor : 1  
Scan Type : Complete  
Area Scan : 9x6x1 : Measurement x=10mm, y=10mm, z=4mm  
Zoom Scan : 9x9x13 : Measurement x=4mm, y=4mm, z=2.5mm

Other Data

DUT Position : Touch  
Separation : 0  
Channel : Mid - 5260MHz

Power Drift-Start : 0.059 W/kg  
Power Drift-Finish: 0.061 W/kg  
Power Drift (%) : 3.389  
Picture :



1 gram SAR value : 0.053 W/kg  
10 gram SAR value : 0.062 W/kg  
Area Scan Peak SAR : 0.096 W/kg  
Zoom Scan Peak SAR : 0.167 W/kg

■ **5260 MHz Only, EUT Position: Tablet, SP**

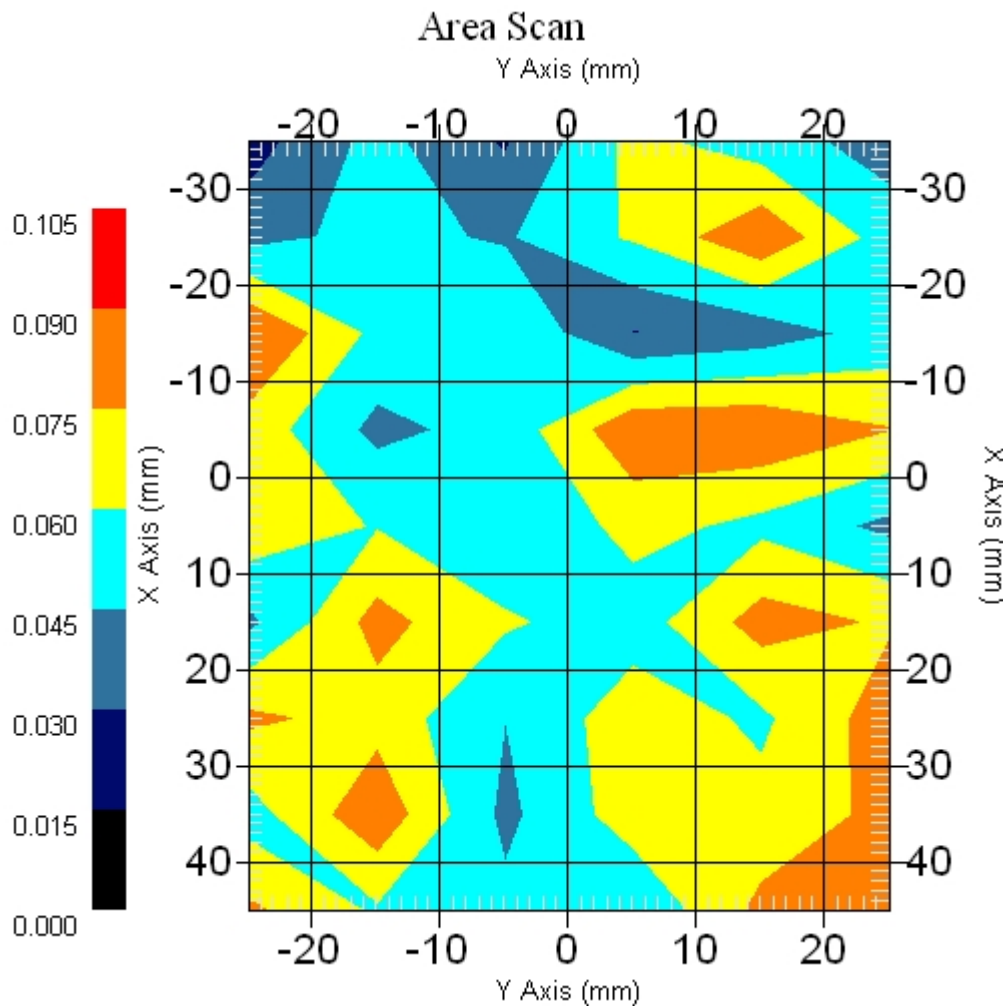
Measurement Data

Crest Factor : 1  
Scan Type : Complete  
Area Scan : 9x6x1 : Measurement x=10mm, y=10mm, z=4mm  
Zoom Scan : 9x9x13 : Measurement x=4mm, y=4mm, z=2.5mm

Other Data

DUT Position : Touch  
Separation : 0  
Channel : Mid - 5260MHz

Power Drift-Start : 0.069 W/kg  
Power Drift-Finish: 0.071 W/kg  
Power Drift (%) : 2.898  
Picture :



1 gram SAR value : 0.126 W/kg  
10 gram SAR value : 0.133 W/kg  
Area Scan Peak SAR : 0.091 W/kg  
Zoom Scan Peak SAR : 0.145 W/kg

■ **EUT Position: Tablet, SP , 836 GSM Only**

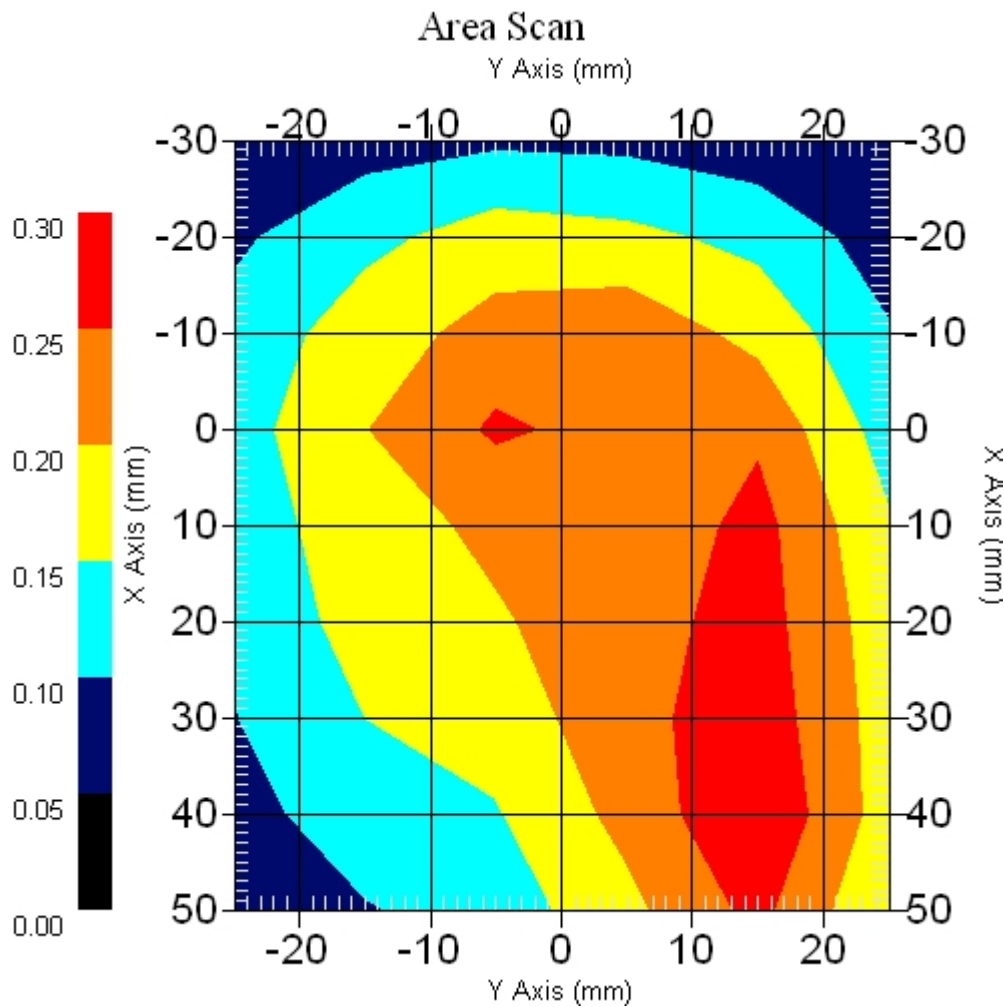
Measurement Data

Crest Factor : 1  
Scan Type : Complete  
Area Scan : 9x6x1 : Measurement x=10mm, y=10mm, z=4mm  
Zoom Scan : 9x9x13 : Measurement x=4mm, y=4mm, z=2.5mm

Other Data

DUT Position : Touch  
Separation : 0  
Channel : Mid - 850

Power Drift-Start : 0.249 W/kg  
Power Drift-Finish: 0.250 W/kg  
Power Drift (%) : 4.016  
Picture :



1 gram SAR value : 0.283 W/kg  
10 gram SAR value : 0.173 W/kg  
Area Scan Peak SAR : 0.298 W/kg  
Zoom Scan Peak SAR : 0.510 W/kg

■ 5260 MHz, EUT Position: Laptop, 836 EGSM

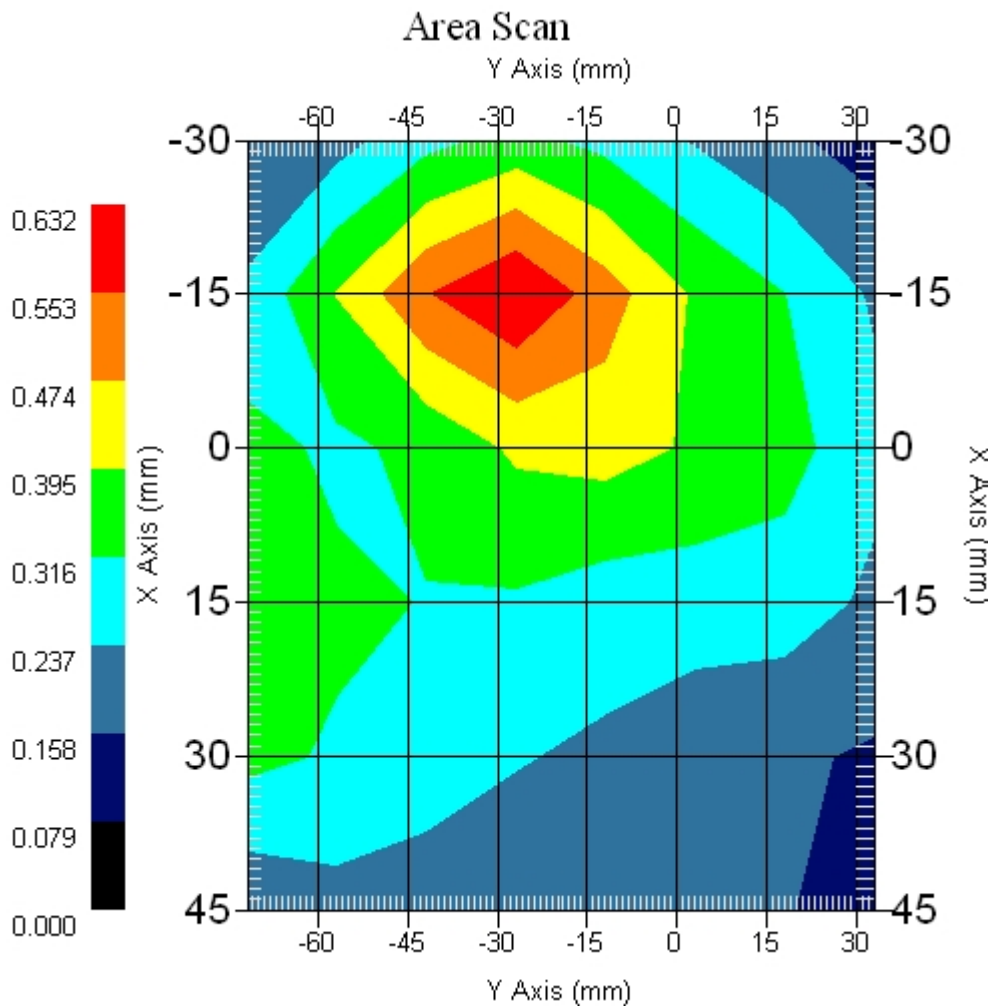
Measurement Data

Crest Factor : 1  
Scan Type : Complete  
Area Scan : 6x8x1 : Measurement x=15mm, y=15mm, z=4mm  
Zoom Scan : 9x9x13 : Measurement x=4mm, y=4mm, z=2.5mm

Other Data

DUT Position : Touch  
Separation : 0  
Channel : Mid - 5260MHz

Power Drift-Start : 0.380 W/kg  
Power Drift-Finish: 0.372 W/kg  
Power Drift (%) : -2.136  
Picture :



1 gram SAR value : 0.530 W/kg  
10 gram SAR value : 0.382 W/kg  
Area Scan Peak SAR : 0.632 W/kg  
Zoom Scan Peak SAR : 0.730 W/kg