

■ 2437 MHz, EUT Position: Tablet,PP 836 UMTS

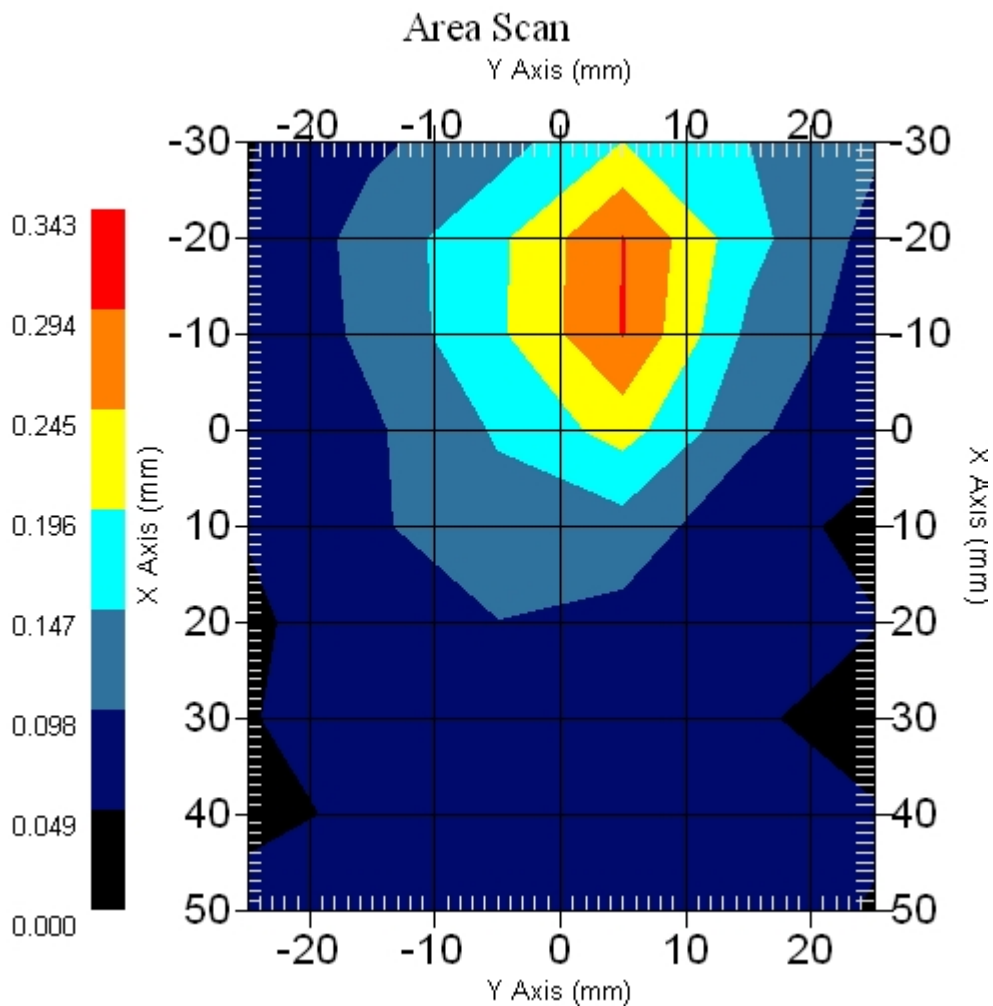
Measurement Data

Crest Factor : 1
Scan Type : Complete
Area Scan : 9x6x1 : Measurement x=10mm, y=10mm, z=4mm
Zoom Scan : 5x5x8 : Measurement x=8mm, y=8mm, z=4mm

Other Data

DUT Position : Touch
Separation : 0
Channel : Mid - 2437MHz

Power Drift-Start : 0.190 W/kg
Power Drift-Finish: 0.182 W/kg
Power Drift (%) : -4.275
Picture :



1 gram SAR value : 0.261 W/kg
10 gram SAR value : 0.142 W/kg
Area Scan Peak SAR : 0.297 W/kg
Zoom Scan Peak SAR : 0.540 W/kg

■ 2437 MHz, EUT Position: Tablet,SL 836 UMTS

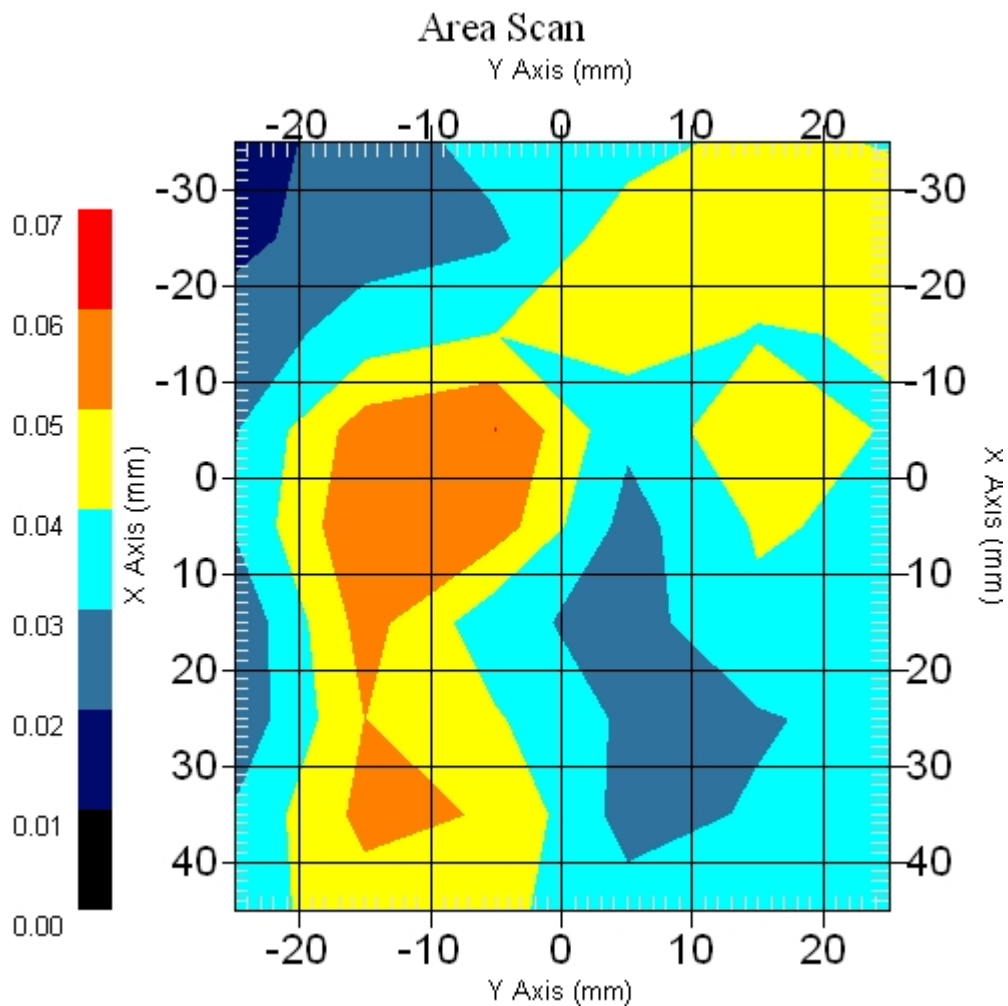
Measurement Data

Crest Factor : 1
Scan Type : Complete
Area Scan : 9x6x1 : Measurement x=10mm, y=10mm, z=4mm
Zoom Scan : 5x5x8 : Measurement x=8mm, y=8mm, z=4mm

Other Data

DUT Position : Touch
Separation : 0
Channel : Mid - 2437MHz

Power Drift-Start : 0.038 W/kg
Power Drift-Finish: 0.037 W/kg
Power Drift (%) : -2.631
Picture :



1 gram SAR value : 0.054 W/kg
10 gram SAR value : 0.044 W/kg
Area Scan Peak SAR : 0.060 W/kg
Zoom Scan Peak SAR : 0.110 W/kg

■ 2437 MHz, EUT Position: Tablet,SP 836 UMTS

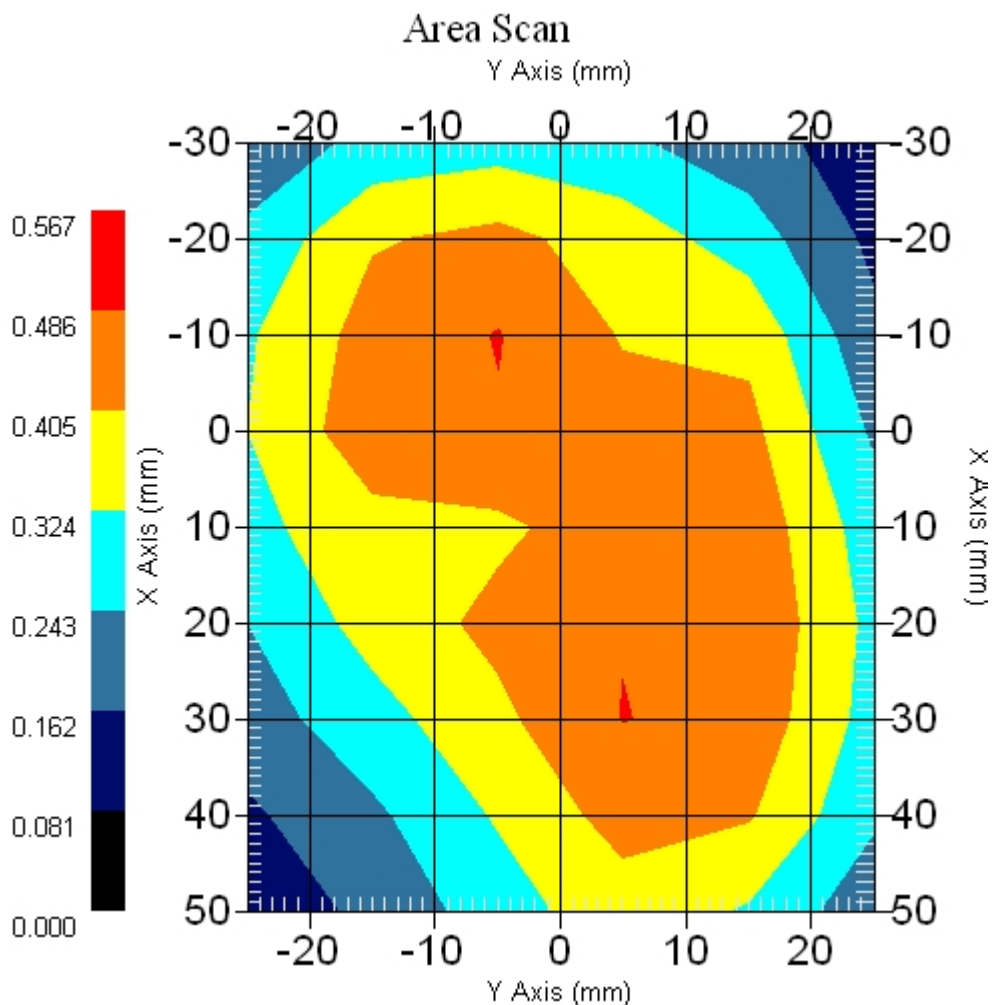
Measurement Data

Crest Factor : 1
Scan Type : Complete
Area Scan : 9x6x1 : Measurement x=10mm, y=10mm, z=4mm
Zoom Scan : 5x5x8 : Measurement x=8mm, y=8mm, z=4mm

Other Data

DUT Position : Touch
Separation : 0
Channel : Mid - 2437MHz

Power Drift-Start : 0.456 W/kg
Power Drift-Finish: 0.463 W/kg
Power Drift (%) : 1.580
Picture :



1 gram SAR value : 0.468 W/kg
10 gram SAR value : 0.351 W/kg
Area Scan Peak SAR : 0.489 W/kg
Zoom Scan Peak SAR : 0.640 W/kg

■ 2437 MHz, EUT Position: Tablet,SP 1880 GSM

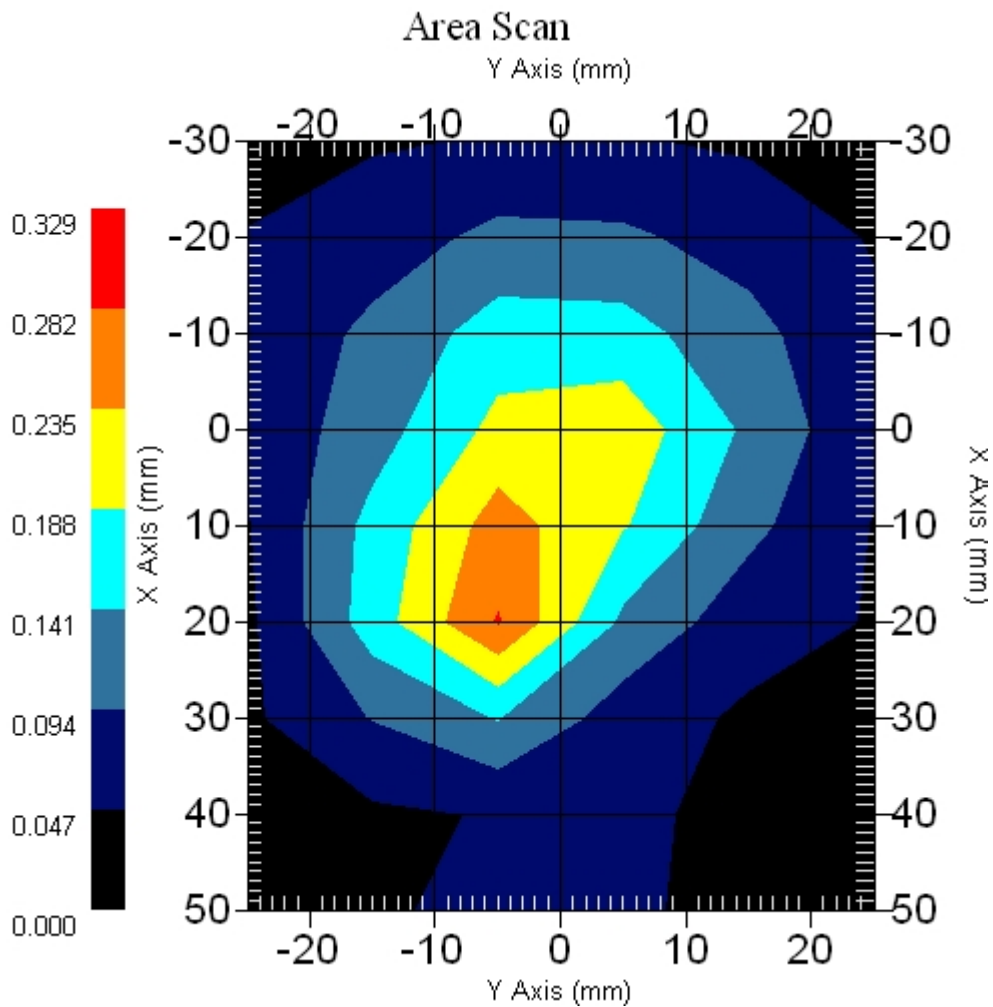
Measurement Data

Crest Factor : 1
Scan Type : Complete
Area Scan : 9x6x1 : Measurement x=10mm, y=10mm, z=4mm
Zoom Scan : 5x5x8 : Measurement x=8mm, y=8mm, z=4mm

Other Data

DUT Position : Touch
Separation : 0
Channel : Mid - 2437MHz

Power Drift-Start : 0.231 W/kg
Power Drift-Finish: 0.235 W/kg
Power Drift (%) : 1.731
Picture :



1 gram SAR value : 0.241 W/kg
10 gram SAR value : 0.139 W/kg
Area Scan Peak SAR : 0.285 W/kg
Zoom Scan Peak SAR : 0.420 W/kg

■ 2437 MHz, EUT Position: Tablet,SP 1880 EGSM

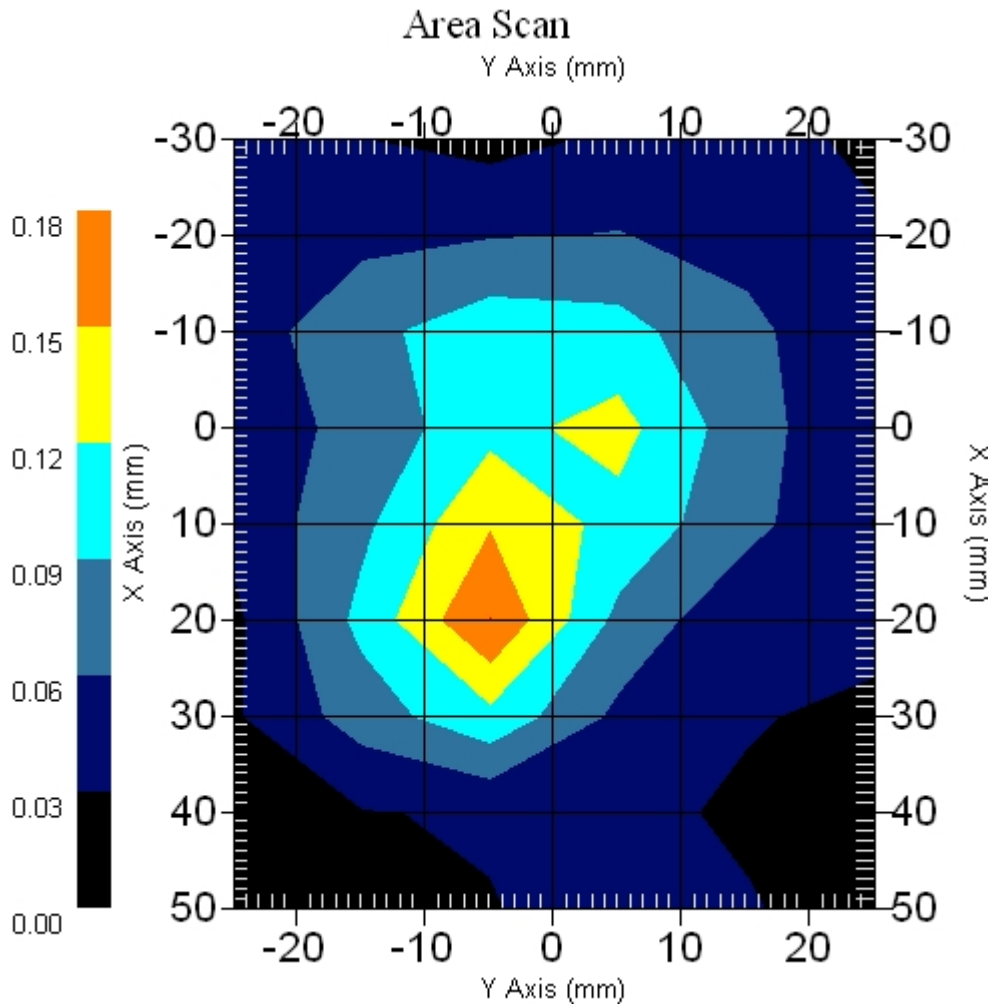
Measurement Data

Crest Factor : 1
Scan Type : Complete
Area Scan : 9x6x1 : Measurement x=10mm, y=10mm, z=4mm
Zoom Scan : 5x5x8 : Measurement x=8mm, y=8mm, z=4mm

Other Data

DUT Position : Touch
Separation : 0
Channel : Mid - 2437MHz

Power Drift-Start : 0.153 W/kg
Power Drift-Finish: 0.153 W/kg
Power Drift (%) : -0.002
Picture :



1 gram SAR value : 0.151 W/kg
10 gram SAR value : 0.091 W/kg
Area Scan Peak SAR : 0.180 W/kg
Zoom Scan Peak SAR : 0.280 W/kg

■ 2437 MHz, EUT Position: Tablet,SP 1880 UMTS

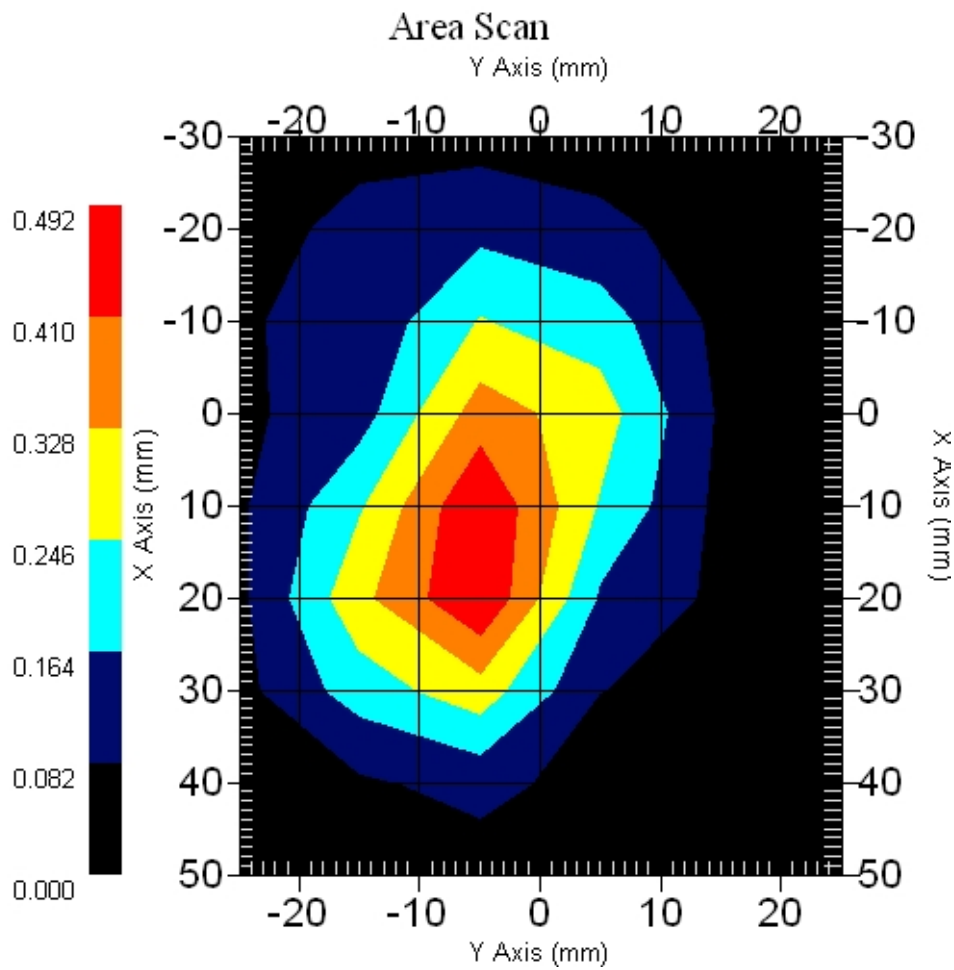
Measurement Data

Crest Factor : 1
Scan Type : Complete
Area Scan : 9x6x1 : Measurement x=10mm, y=10mm, z=4mm
Zoom Scan : 5x5x8 : Measurement x=8mm, y=8mm, z=4mm

Other Data

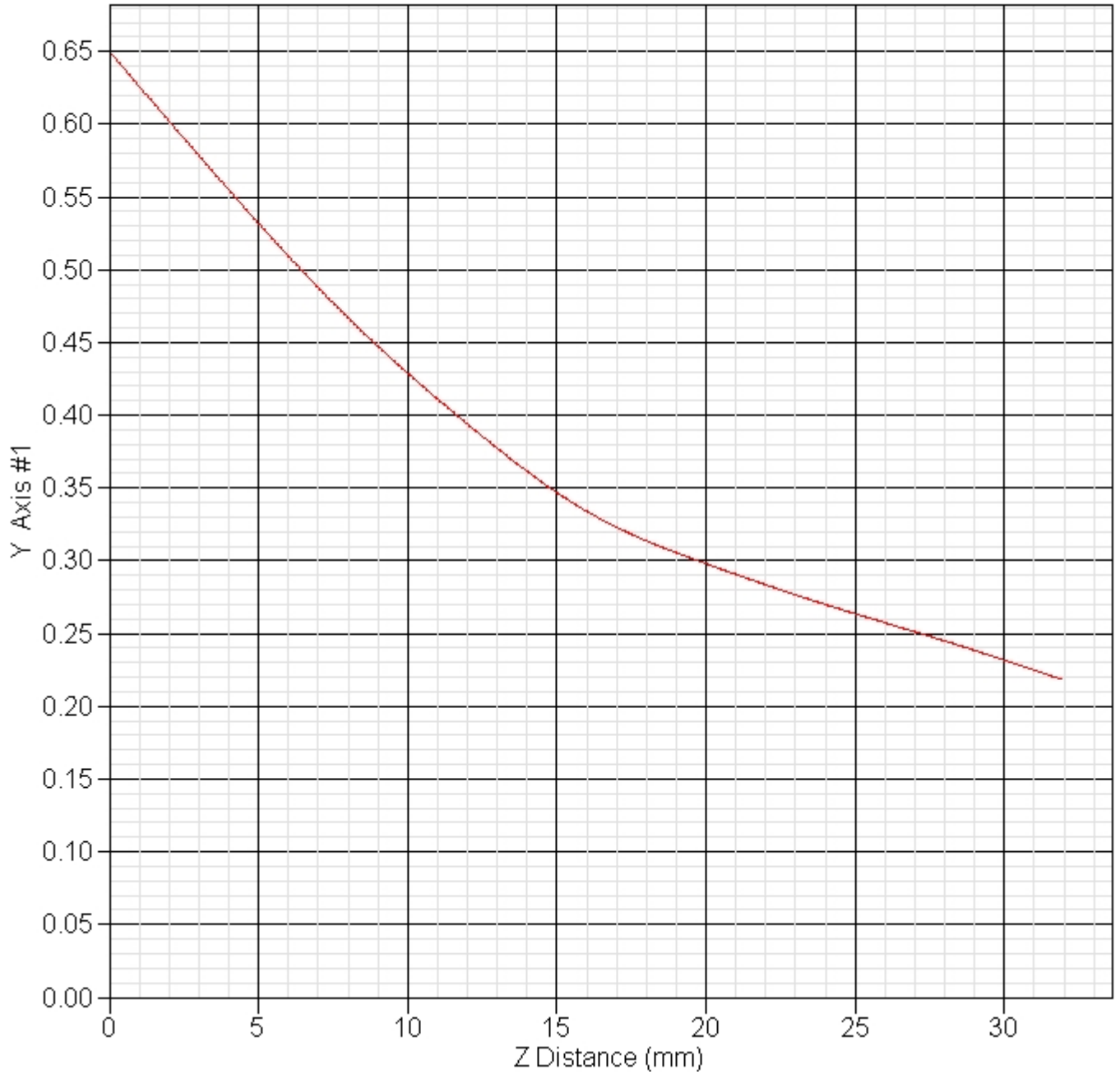
DUT Position : Touch
Separation : 0
Channel : Mid - 2437MHz

Power Drift-Start : 0.373 W/kg
Power Drift-Finish: 0.379 W/kg
Power Drift (%) : 1.741
Picture :



1 gram SAR value : 0.431 W/kg
10 gram SAR value : 0.222 W/kg
Area Scan Peak SAR : 0.491 W/kg
Zoom Scan Peak SAR : 0.830 W/kg

■ Z Axis : 802.11g 2437MHz, Position: Laptop, 836 GSM
SAR-Z Axis
at Hotspot x:-14.30 y:-37.00



12.2 802.11g + Akita (GSM, EGSM) : FCCID N7NMC8755 +Bluetooth

■ 2437 MHz, EUT Position: Laptop 836 GSM

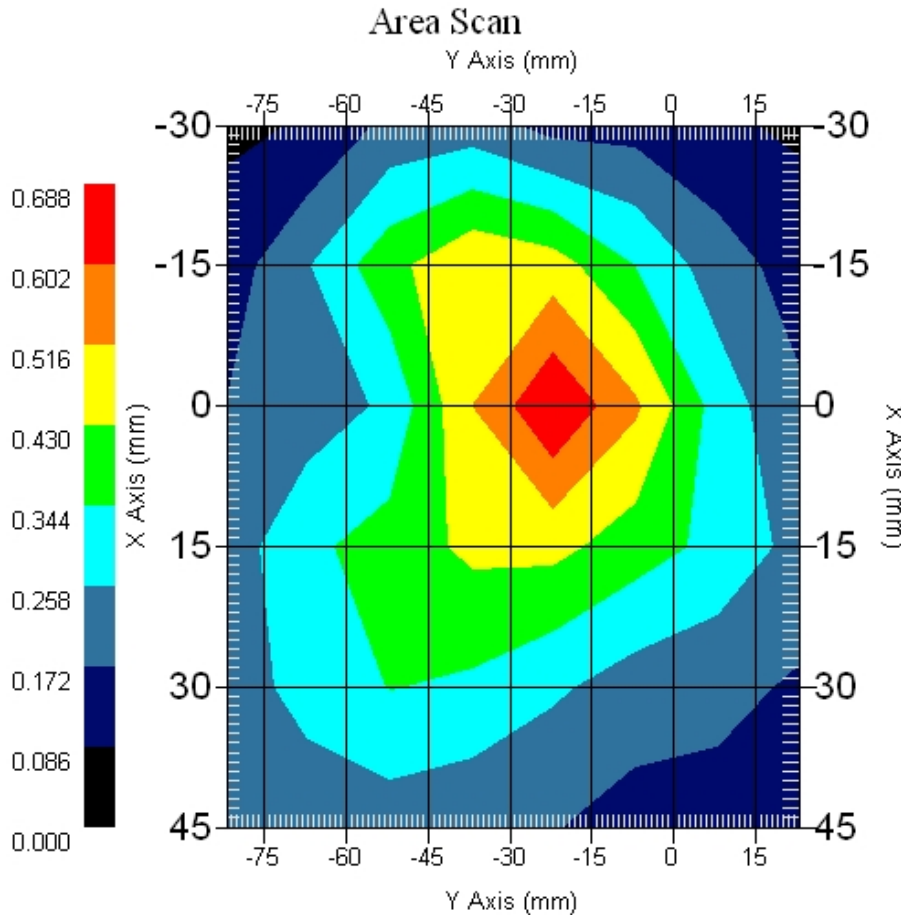
Measurement Data

Crest Factor : 1
Scan Type : Complete
Area Scan : 6x8x1 : Measurement x=15mm, y=15mm, z=4mm
Zoom Scan : 5x5x8 : Measurement x=8mm, y=8mm, z=4mm

Other Data

DUT Position : Touch
Separation : 0
Channel : Mid - 2437MHz

Power Drift-Start : 0.615 W/kg
Power Drift-Finish: 0.614 W/kg
Power Drift (%) : -1.626
Picture :



1 gram SAR value : 0.663 W/kg
10 gram SAR value : 0.491 W/kg
Area Scan Peak SAR : 0.684 W/kg
Zoom Scan Peak SAR : 0.880 W/kg

■ 2437 MHz, EUT Position: Laptop 836 GSM

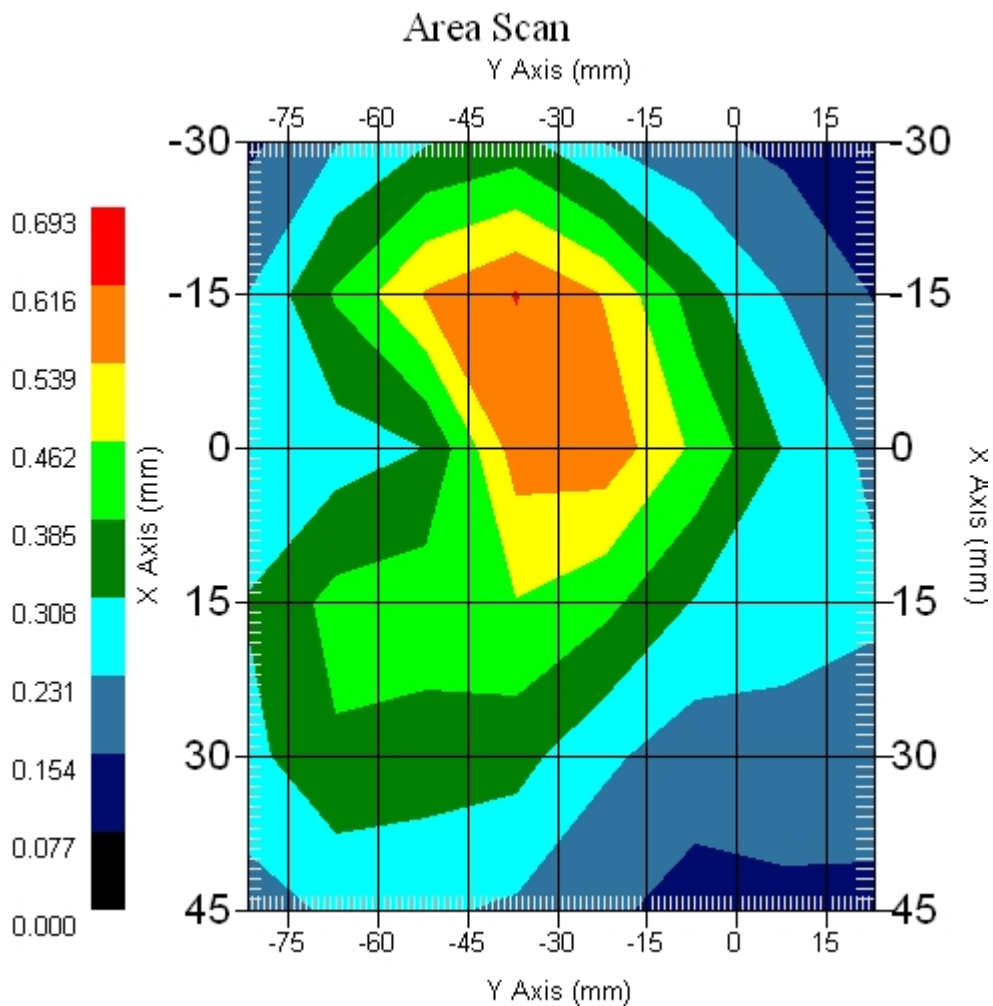
Measurement Data

Crest Factor : 1
Scan Type : Complete
Area Scan : 6x8x1 : Measurement x=15mm, y=15mm, z=4mm
Zoom Scan : 5x5x8 : Measurement x=8mm, y=8mm, z=4mm

Other Data

DUT Position : Touch
Separation : 0
Channel : Mid - 2437MHz

Power Drift-Start : 0.346 W/kg
Power Drift-Finish: 0.355 W/kg
Power Drift (%) : 2.601
Picture :



1 gram SAR value : 0.628 W/kg
10 gram SAR value : 0.484 W/kg
Area Scan Peak SAR : 0.619 W/kg
Zoom Scan Peak SAR : 0.800 W/kg

■ 2437 MHz, EUT Position: Tablet,PL 836 GSM

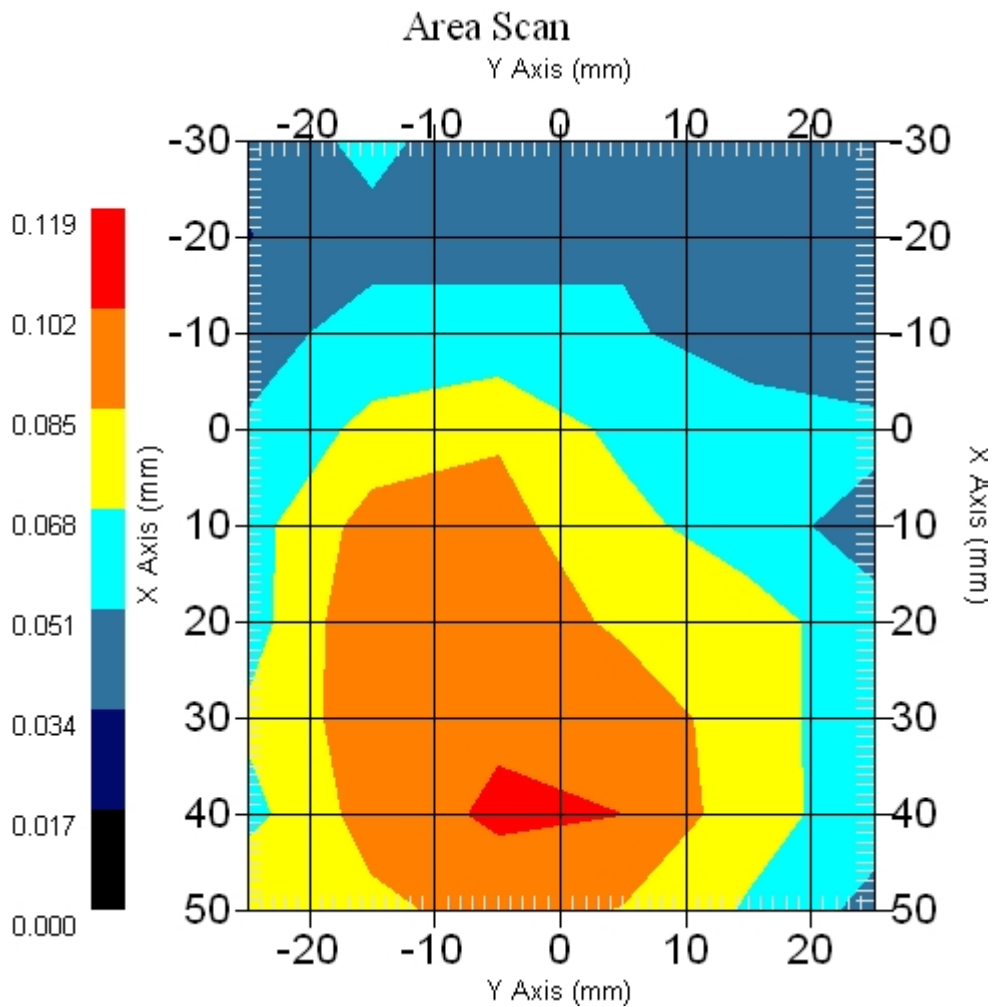
Measurement Data

Crest Factor : 1
Scan Type : Complete
Area Scan : 9x6x1 : Measurement x=10mm, y=10mm, z=4mm
Zoom Scan : 5x5x8 : Measurement x=8mm, y=8mm, z=4mm

Other Data

DUT Position : Touch
Separation : 0
Channel : Mid - 2437MHz

Power Drift-Start : 0.080 W/kg
Power Drift-Finish: 0.078 W/kg
Power Drift (%) : -2.787
Picture :



1 gram SAR value : 0.114 W/kg
10 gram SAR value : 0.089 W/kg
Area Scan Peak SAR : 0.105 W/kg
Zoom Scan Peak SAR : 0.130 W/kg

■ 2437 MHz, EUT Position: Tablet,PP 836 GSM

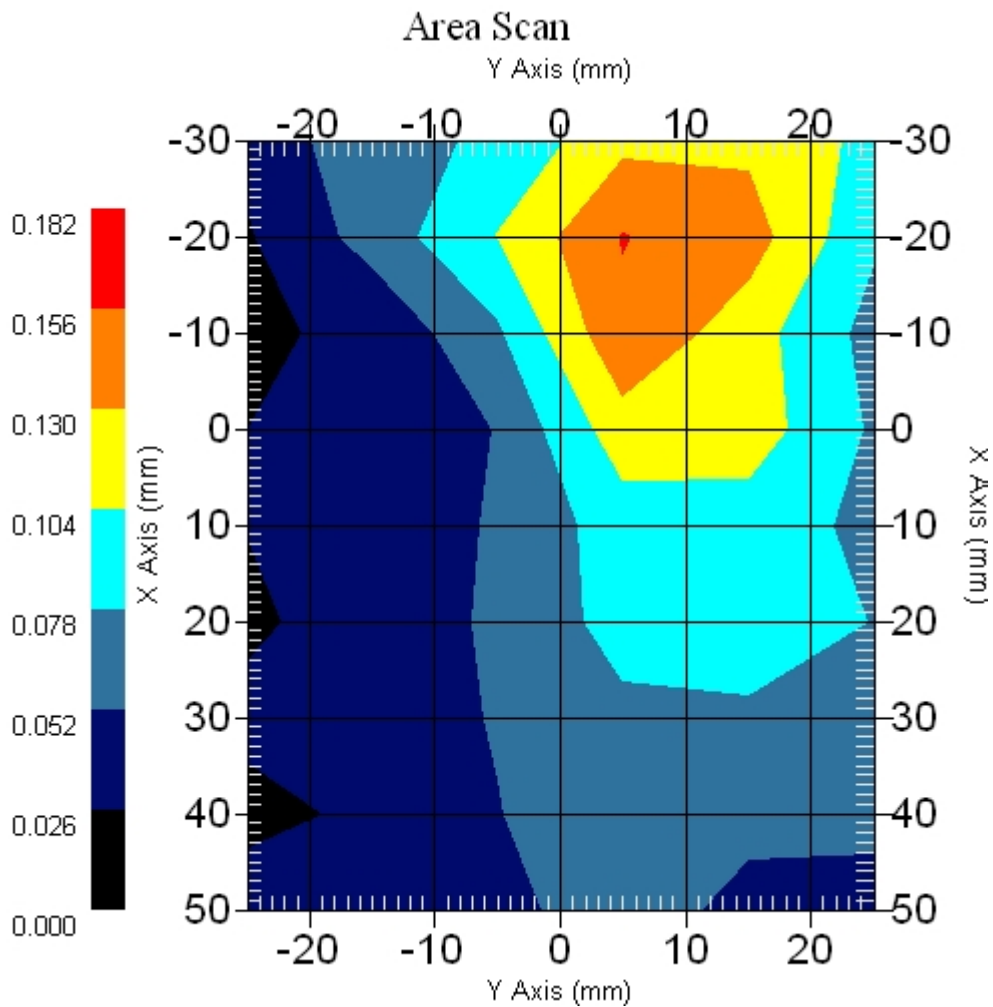
Measurement Data

Crest Factor : 1
Scan Type : Complete
Area Scan : 9x6x1 : Measurement x=10mm, y=10mm, z=4mm
Zoom Scan : 5x5x8 : Measurement x=8mm, y=8mm, z=4mm

Other Data

DUT Position : Touch
Separation : 0
Channel : Mid - 2437MHz

Power Drift-Start : 0.109 W/kg
Power Drift-Finish: 0.109 W/kg
Power Drift (%) : 0.023
Picture :



1 gram SAR value : 0.148 W/kg
10 gram SAR value : 0.096 W/kg
Area Scan Peak SAR : 0.157 W/kg
Zoom Scan Peak SAR : 0.230 W/kg

■ 2437 MHz, EUT Position: Tablet,SL 836 GSM

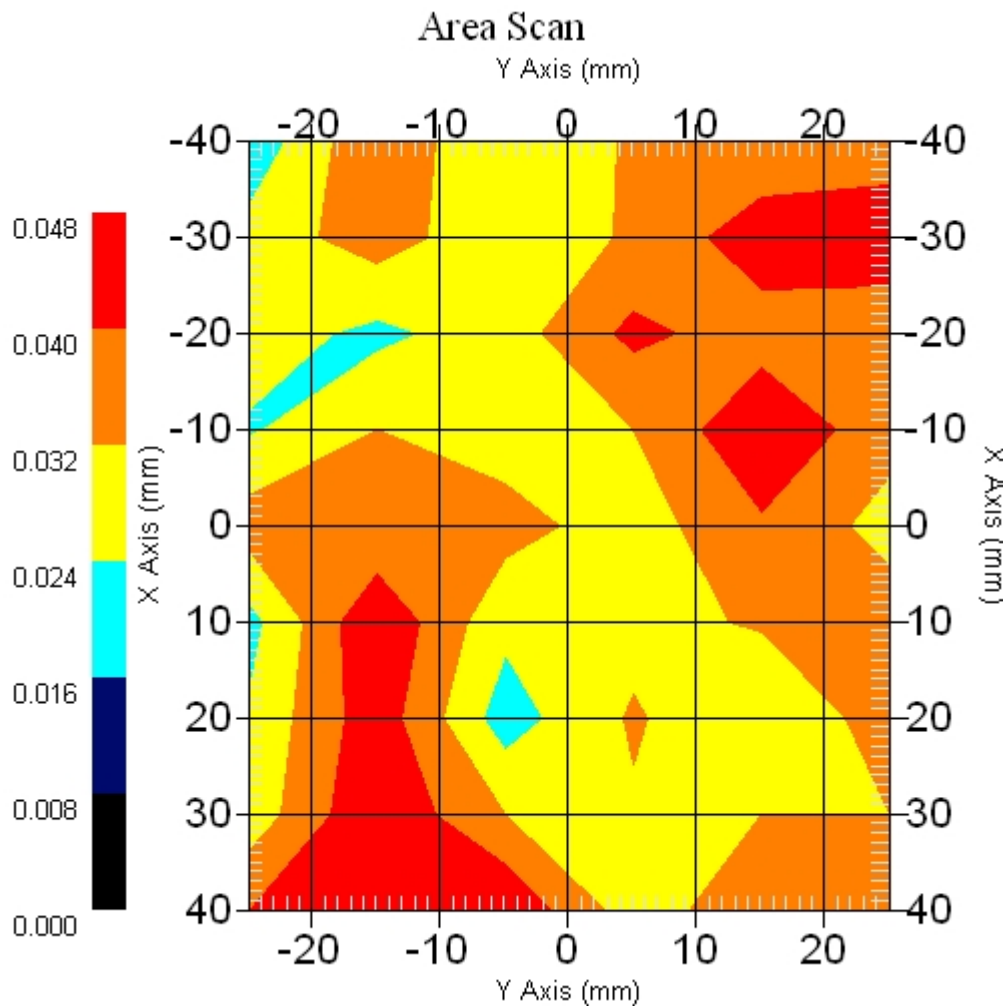
Measurement Data

Crest Factor : 1
Scan Type : Complete
Area Scan : 9x6x1 : Measurement x=10mm, y=10mm, z=4mm
Zoom Scan : 5x5x8 : Measurement x=8mm, y=8mm, z=4mm

Other Data

DUT Position : Touch
Separation : 0
Channel : Mid - 2437MHz

Power Drift-Start : 0.027 W/kg
Power Drift-Finish: 0.026 W/kg
Power Drift (%) : -3.057
Picture :



1 gram SAR value : 0.051 W/kg
10 gram SAR value : 0.039 W/kg
Area Scan Peak SAR : 0.048 W/kg
Zoom Scan Peak SAR : 0.070 W/kg

■ **2437 MHz, EUT Position: Tablet,SP 836 GSM**

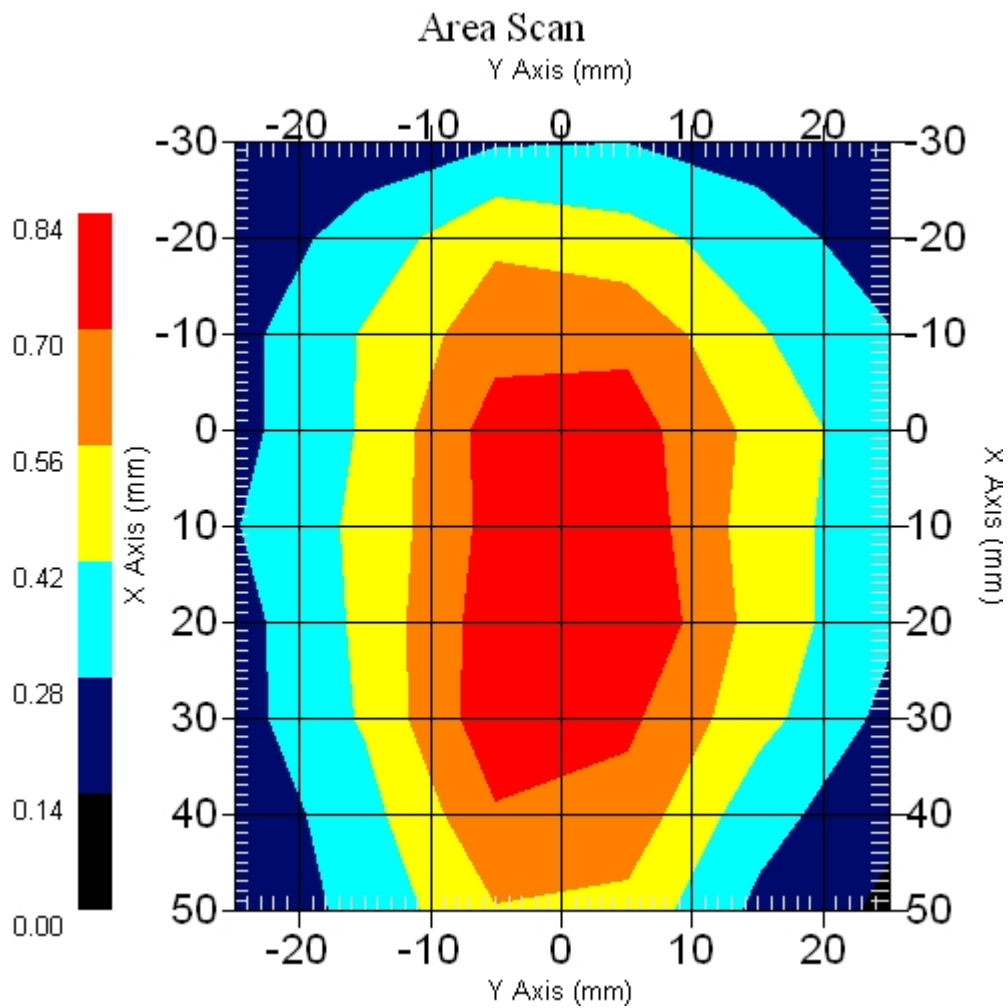
Measurement Data

Crest Factor : 1
 Scan Type : Complete
 Area Scan : 9x6x1 : Measurement x=10mm, y=10mm, z=4mm
 Zoom Scan : 5x5x8 : Measurement x=8mm, y=8mm, z=4mm

Other Data

DUT Position : Touch
 Separation : 0
 Channel : Mid - 2437MHz

Power Drift-Start : 0.922 W/kg
 Power Drift-Finish: 0.938 W/kg
 Power Drift (%) : 1.751
 Picture :



1 gram SAR value : 0.824 W/kg
 10 gram SAR value : 0.587 W/kg
 Area Scan Peak SAR : 0.838 W/kg
 Zoom Scan Peak SAR : 1.231 W/kg

■ 2437 MHz, EUT Position: Tablet,PL 836 EGSM

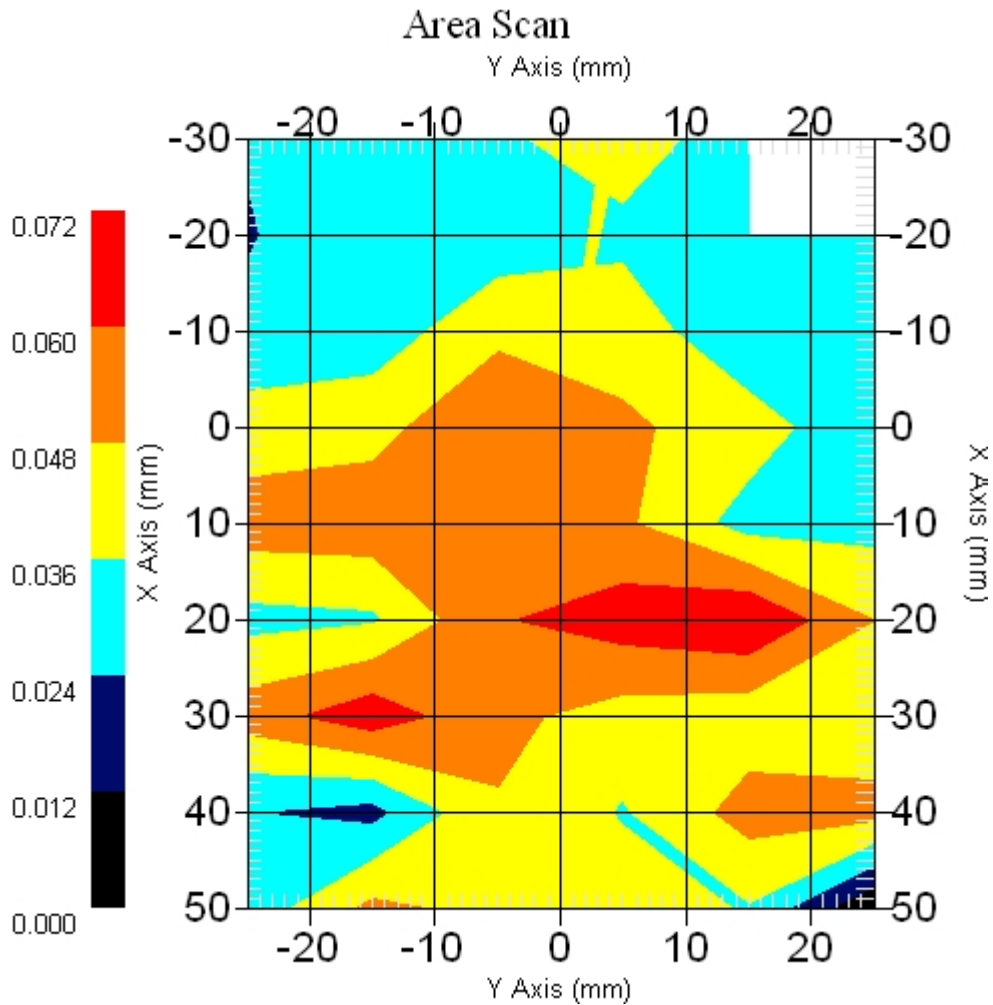
Measurement Data

Crest Factor : 1
Scan Type : Complete
Area Scan : 9x6x1 : Measurement x=10mm, y=10mm, z=4mm
Zoom Scan : 5x5x8 : Measurement x=8mm, y=8mm, z=4mm

Other Data

DUT Position : Touch
Separation : 0
Channel : Mid - 2437MHz

Power Drift-Start : 0.051 W/kg
Power Drift-Finish: 0.053 W/kg
Power Drift (%) : 4.901
Picture :



1 gram SAR value : 0.066 W/kg
10 gram SAR value : 0.062 W/kg
Area Scan Peak SAR : 0.071 W/kg
Zoom Scan Peak SAR : 0.126 W/kg

■ 2437 MHz, EUT Position: Tablet,PP 836 EGSM

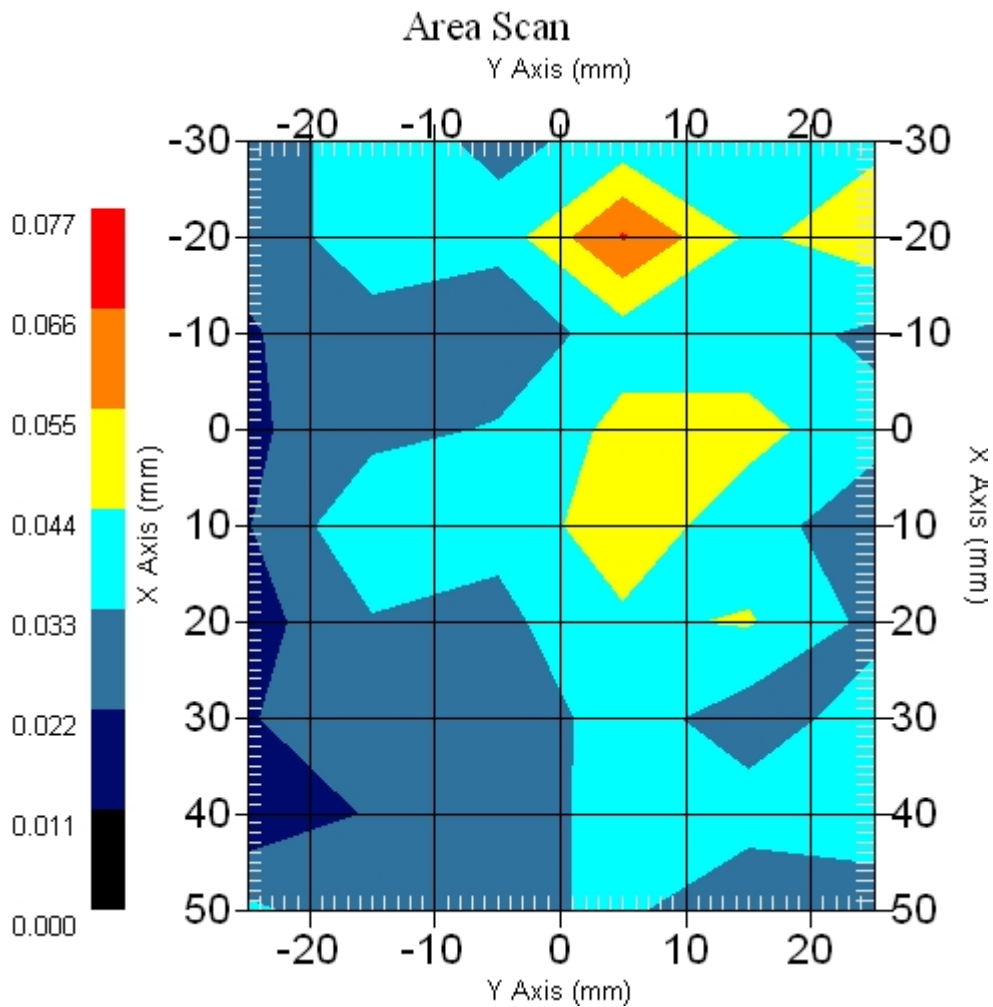
Measurement Data

Crest Factor : 1
Scan Type : Complete
Area Scan : 9x6x1 : Measurement x=10mm, y=10mm, z=4mm
Zoom Scan : 5x5x8 : Measurement x=8mm, y=8mm, z=4mm

Other Data

DUT Position : Touch
Separation : 0
Channel : Mid - 2437MHz

Power Drift-Start : 0.051 W/kg
Power Drift-Finish: 0.051 W/kg
Power Drift (%) : 0.045
Picture :



1 gram SAR value : 0.057 W/kg
10 gram SAR value : 0.036 W/kg
Area Scan Peak SAR : 0.067 W/kg
Zoom Scan Peak SAR : 0.070 W/kg

■ 2437 MHz, EUT Position: Tablet,SL 836 EGSM

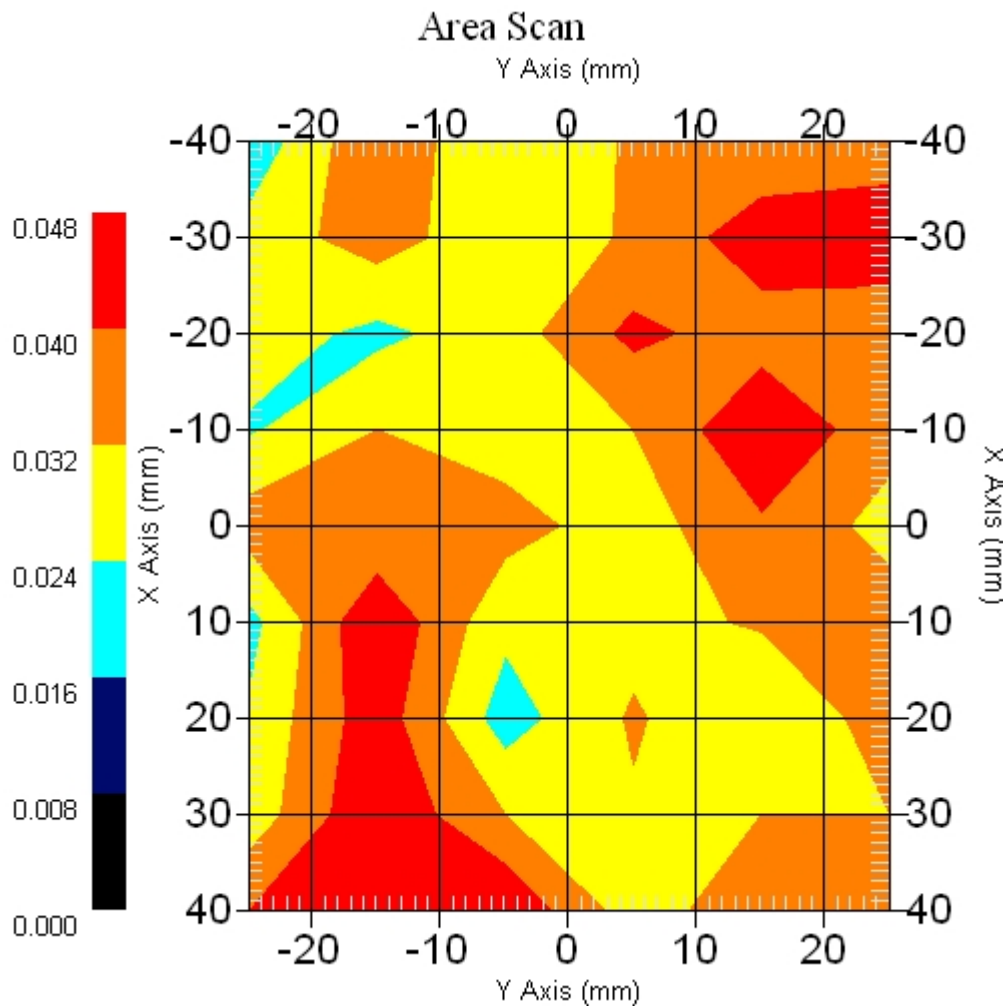
Measurement Data

Crest Factor : 1
Scan Type : Complete
Area Scan : 9x6x1 : Measurement x=10mm, y=10mm, z=4mm
Zoom Scan : 5x5x8 : Measurement x=8mm, y=8mm, z=4mm

Other Data

DUT Position : Touch
Separation : 0
Channel : Mid - 2437MHz

Power Drift-Start : 0.027 W/kg
Power Drift-Finish: 0.026 W/kg
Power Drift (%) : -3.057
Picture :



1 gram SAR value : 0.051 W/kg
10 gram SAR value : 0.039 W/kg
Area Scan Peak SAR : 0.048 W/kg
Zoom Scan Peak SAR : 0.070 W/kg

■ 2437 MHz, EUT Position: **Tablet,SP 836 EGSM**

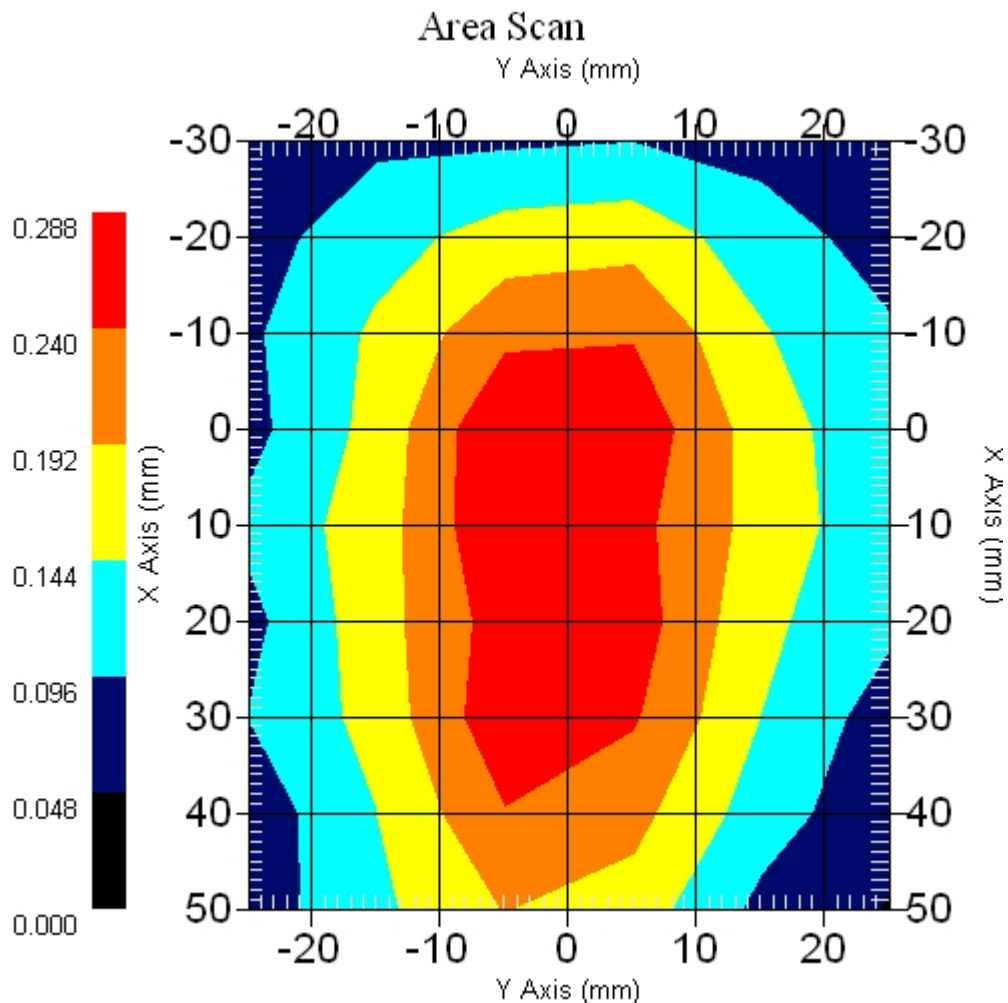
Measurement Data

Crest Factor : 1
 Scan Type : Complete
 Area Scan : 9x6x1 : Measurement x=10mm, y=10mm, z=4mm
 Zoom Scan : 5x5x8 : Measurement x=8mm, y=8mm, z=4mm

Other Data

DUT Position : Touch
 Separation : 0
 Channel : Mid - 2437MHz

Power Drift-Start : 0.321 W/kg
 Power Drift-Finish: 0.314 W/kg
 Power Drift (%) : -2.298
 Picture :



1 gram SAR value : 0.270 W/kg
 10 gram SAR value : 0.194 W/kg
 Area Scan Peak SAR : 0.286 W/kg
 Zoom Scan Peak SAR : 0.370 W/kg

■ 2437 MHz, EUT Position: Tablet,SP 1880 GSM

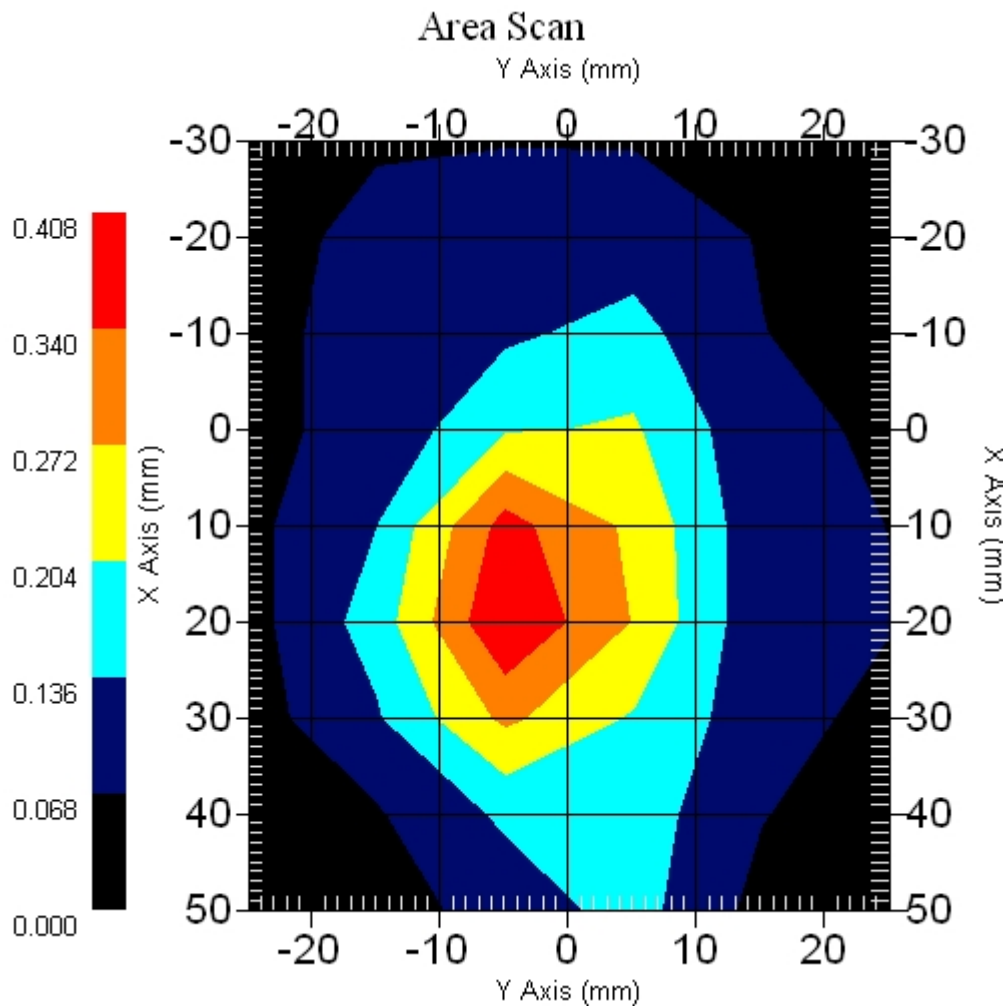
Measurement Data

Crest Factor : 1
Scan Type : Complete
Area Scan : 9x6x1 : Measurement x=10mm, y=10mm, z=4mm
Zoom Scan : 5x5x8 : Measurement x=8mm, y=8mm, z=4mm

Other Data

DUT Position : Touch
Separation : 0
Channel : Mid - 2437MHz

Power Drift-Start : 0.261 W/kg
Power Drift-Finish: 0.257 W/kg
Power Drift (%) : -1.474
Picture :



1 gram SAR value : 0.353 W/kg
10 gram SAR value : 0.190 W/kg
Area Scan Peak SAR : 0.405 W/kg
Zoom Scan Peak SAR : 0.620 W/kg

■ 2437 MHz, EUT Position: Tablet,SP 1880 EGSM

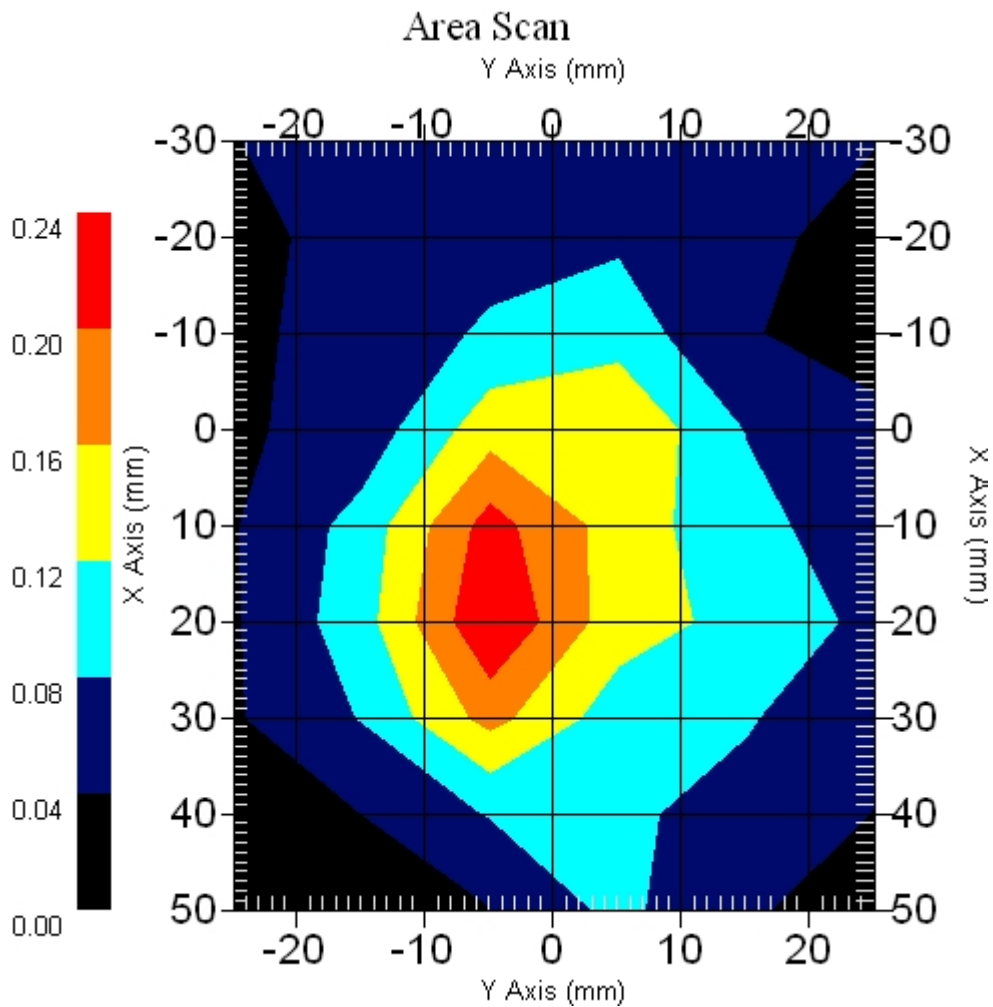
Measurement Data

Crest Factor : 1
Scan Type : Complete
Area Scan : 9x6x1 : Measurement x=10mm, y=10mm, z=4mm
Zoom Scan : 5x5x8 : Measurement x=8mm, y=8mm, z=4mm

Other Data

DUT Position : Touch
Separation : 0
Channel : Mid - 2437MHz

Power Drift-Start : 0.204 W/kg
Power Drift-Finish: 0.198 W/kg
Power Drift (%) : -2.941
Picture :



1 gram SAR value : 0.179 W/kg
10 gram SAR value : 0.097 W/kg
Area Scan Peak SAR : 0.238 W/kg
Zoom Scan Peak SAR : 0.390 W/kg

■ Z Axis 802.11g 2437MHz, Position: Laptop Akita 836 GSM

SAR-Z Axis

at Hotspot x:-6.40 y:-21.00

