

■ 2437 MHz, EUT Position: Tablet,PP 1880 EV-DO

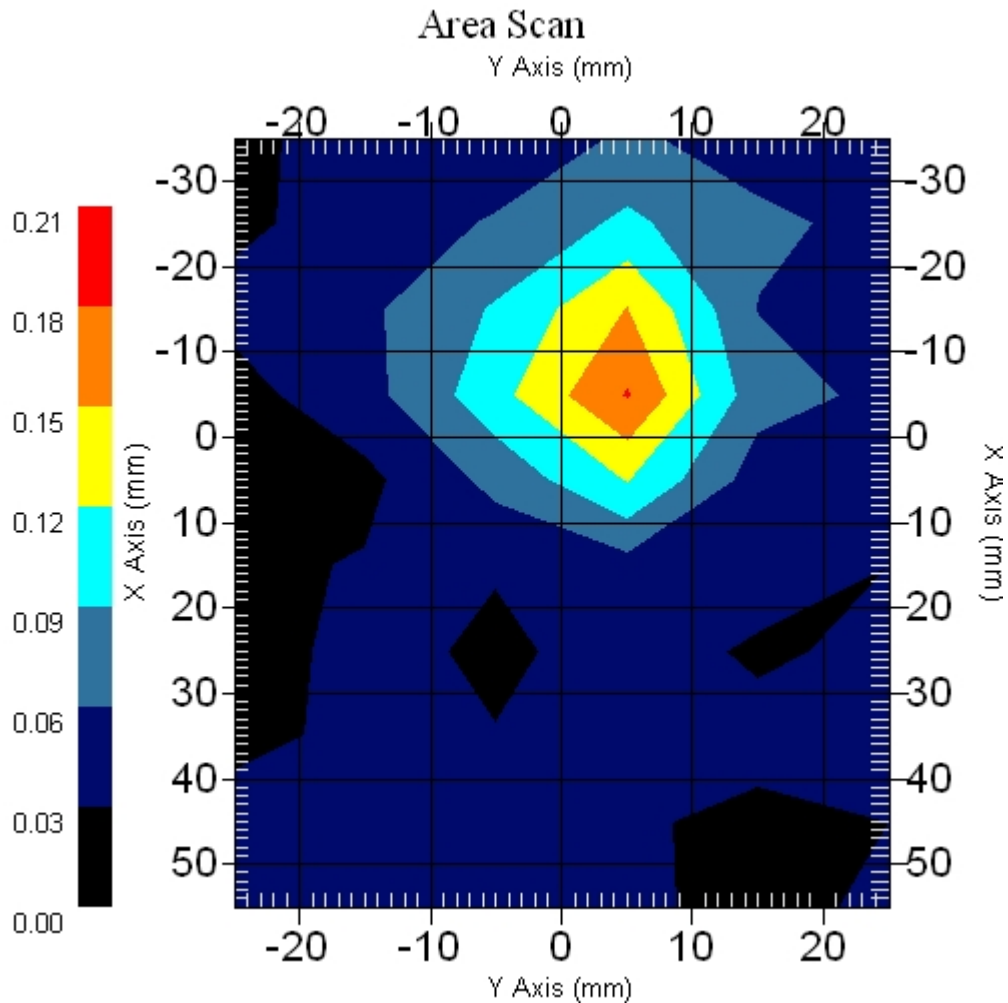
Measurement Data

Crest Factor : 1  
Scan Type : Complete  
Area Scan : 10x6x1 : Measurement x=10mm, y=10mm, z=4mm  
Zoom Scan : 5x5x8 : Measurement x=8mm, y=8mm, z=4mm

Other Data

DUT Position : Touch  
Separation : 0  
Channel : Mid - 2437MHz

Power Drift-Start : 0.166 W/kg  
Power Drift-Finish: 0.167 W/kg  
Power Drift (%) : 0.847



1 gram SAR value : 0.155 W/kg  
10 gram SAR value : 0.081 W/kg  
Area Scan Peak SAR : 0.182 W/kg  
Zoom Scan Peak SAR : 0.300 W/kg

■ 2437 MHz, EUT Position: Tablet,SL 1880 EV-DO

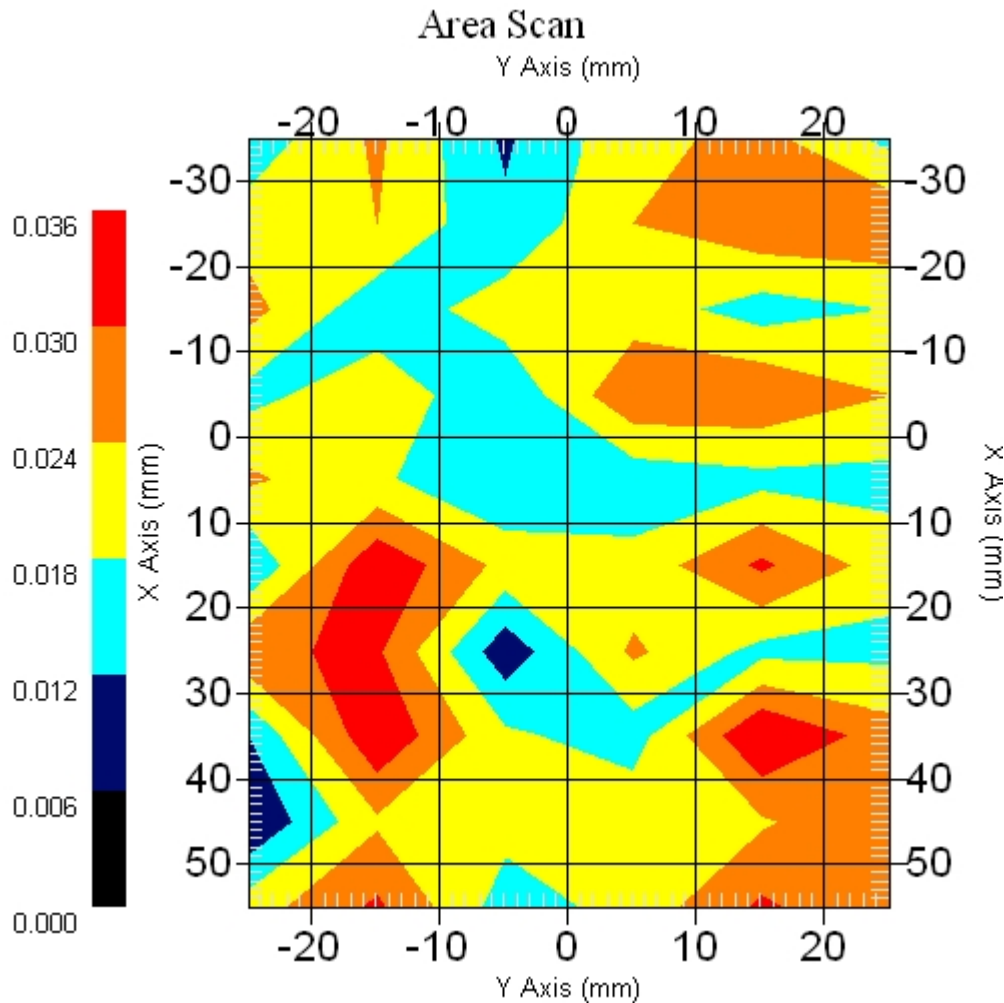
Measurement Data

Crest Factor : 1  
Scan Type : Complete  
Area Scan : 10x6x1 : Measurement x=10mm, y=10mm, z=4mm  
Zoom Scan : 5x5x8 : Measurement x=8mm, y=8mm, z=4mm

Other Data

DUT Position : Touch  
Separation : 0  
Channel : Mid - 2437MHz

Power Drift-Start : 0.026 W/kg  
Power Drift-Finish: 0.027 W/kg  
Power Drift (%) : 4.106



1 gram SAR value : 0.039 W/kg  
10 gram SAR value : 0.020 W/kg  
Area Scan Peak SAR : 0.036 W/kg  
Zoom Scan Peak SAR : 0.110 W/kg

■ 2437 MHz, EUT Position: Tablet,SP 1880 EV-DO

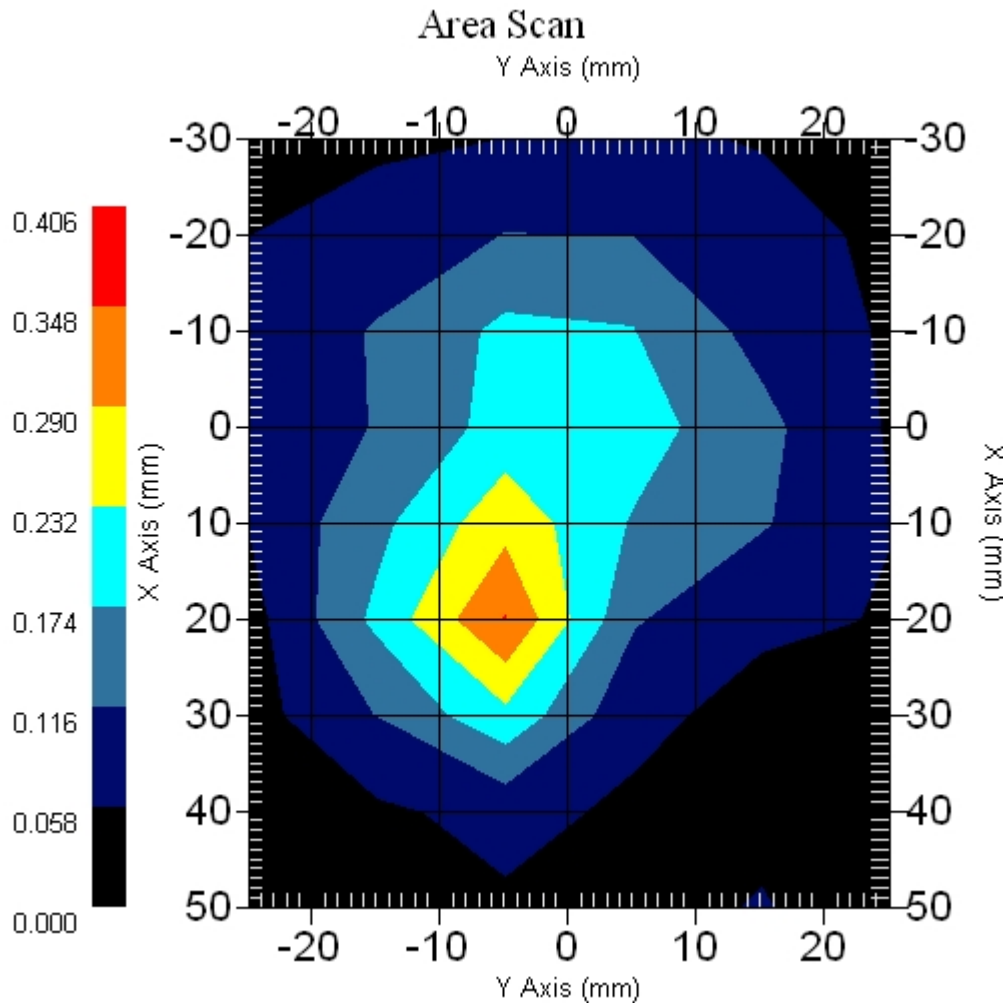
Measurement Data

Crest Factor : 1  
Scan Type : Complete  
Area Scan : 9x6x1 : Measurement x=10mm, y=10mm, z=4mm  
Zoom Scan : 5x5x8 : Measurement x=8mm, y=8mm, z=4mm

Other Data

DUT Position : Touch  
Separation : 0  
Channel : Mid - 2437MHz

Power Drift-Start : 0.225 W/kg  
Power Drift-Finish: 0.219 W/kg  
Power Drift (%) : -2.663

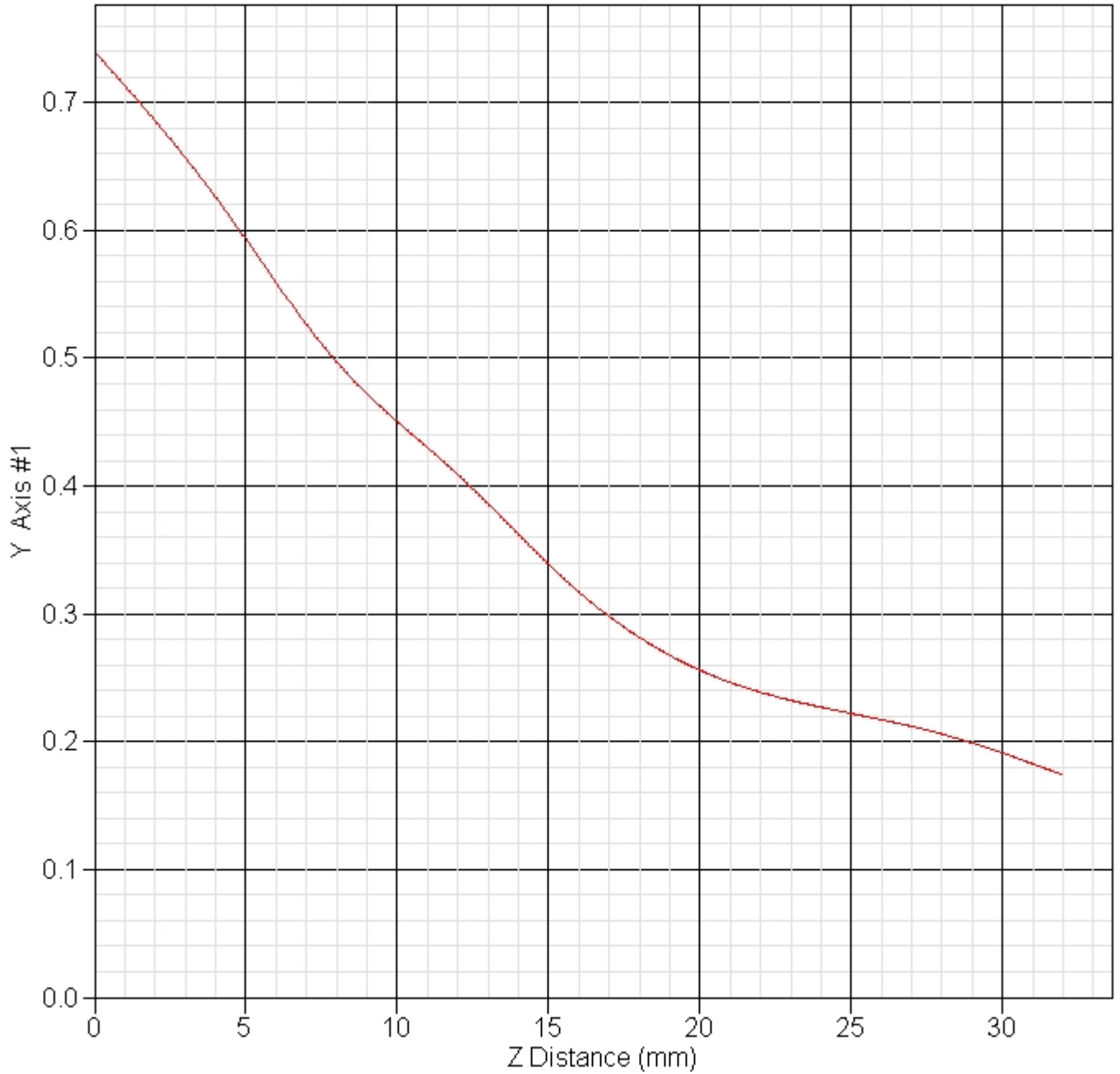


1 gram SAR value : 0.223 W/kg  
10 gram SAR value : 0.119 W/kg  
Area Scan Peak SAR : 0.350 W/kg  
Zoom Scan Peak SAR : 0.470 W/kg

■ Z Axis : 802.11b 2437MHz, Position: Laptop, TOSA 836 EV-DO

SAR-Z Axis

at Hotspot x:-7.70 y:-20.00



## 12. 802.11g SAR measurement Data

Measurement Date : 01-Aug-2006

### Product Data

Device Name : Golan  
Serial No. : 11.b-Botton-GSM800  
Type : Other  
Model : 1  
Frequency : 2437.00 MHz  
Max. Transmit Pwr : 0.103 W  
Drift Time : 0 min(s)  
Length : 230 mm  
Width : 270 mm  
Depth : 22 mm  
Antenna Type : Internal  
Orientation : Touch

### Phantom Data

Name : APREL-Uni  
Type : Uni-Phantom  
Size (mm) : 280 x 280 x 200  
Serial No. : System Default  
Location : Center  
Description : uni\_1

### Tissue Data

Type : BODY  
Serial No. : 2450BODY  
Frequency : 2450.00 MHz  
Last Calib. Date : 01-Aug-2006  
Temperature : 22.10 °C  
Ambient Temp. : 22.40 °C  
Humidity : 51.00 RH%  
Epsilon : 53.95 F/m  
Sigma : 1.99 S/m  
Density : 1000.00 kg/cu. m

### Probe Data

Name : E-field Probe  
Model : ALS-E-020  
Type : E-Field Triangle  
Serial No. : 266  
Last Calib. Date : 22-Jun-2006  
Frequency : 2450.00 MHz  
Duty Cycle Factor: 1  
Conversion Factor: 5.02  
Probe Sensitivity: 1.20 1.20 1.20  $\mu\text{V}/(\text{V}/\text{m})^2$   
Compression Point: 95.00 mV  
Offset : 1.56 mm

## 12.1 802.11g + Karafuto (GSM, EGSM, UMTS) : FCCID N7NMC8765 +Bluetooth

### ■ 2437 MHz, EUT Position: Laptop 836GSM

Measurement Data

Crest Factor : 1  
 Scan Type : Complete  
 Area Scan : 6x8x1 : Measurement x=15mm, y=15mm, z=4mm  
 Zoom Scan : 5x5x8 : Measurement x=8mm, y=8mm, z=4mm

Other Data

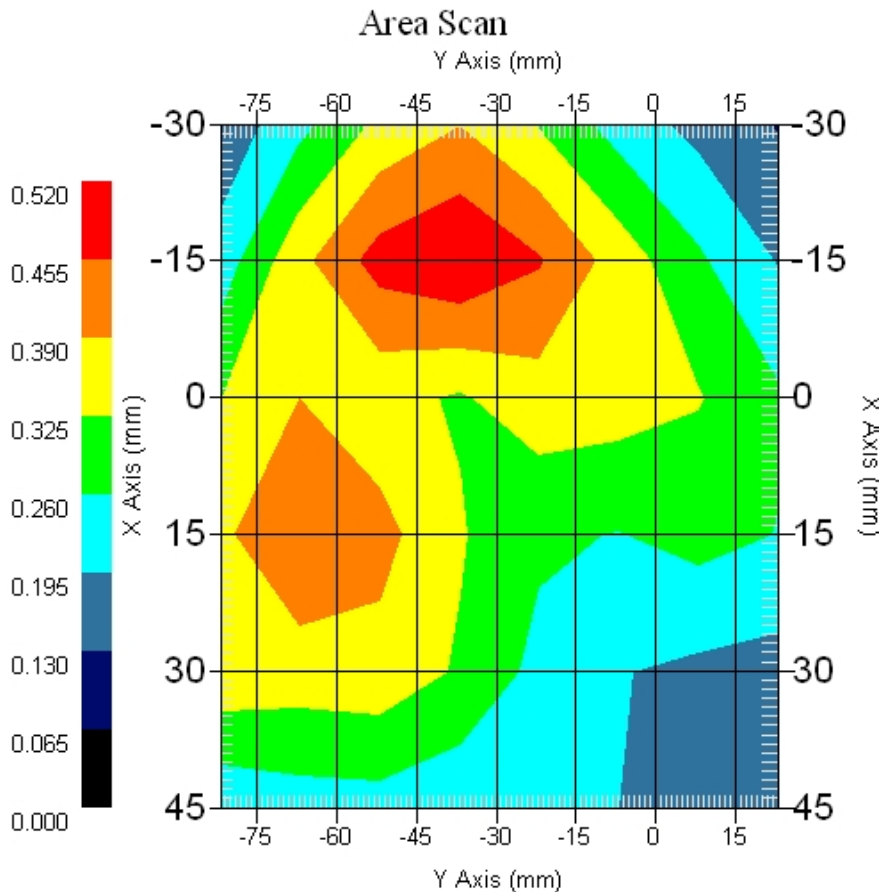
DUT Position : Touch  
 Separation : 0  
 Channel : Mid - 2437MHz

Power Drift-Start : 0.436 W/kg

Power Drift-Finish: 0.436 W/kg

Power Drift (%) : 0.021

Picture :



1 gram SAR value : 0.518 W/kg

10 gram SAR value : 0.398 W/kg

Area Scan Peak SAR : 0.518 W/kg

Zoom Scan Peak SAR : 0.650 W/kg

■ 2437 MHz, EUT Position: Laptop 836GSM

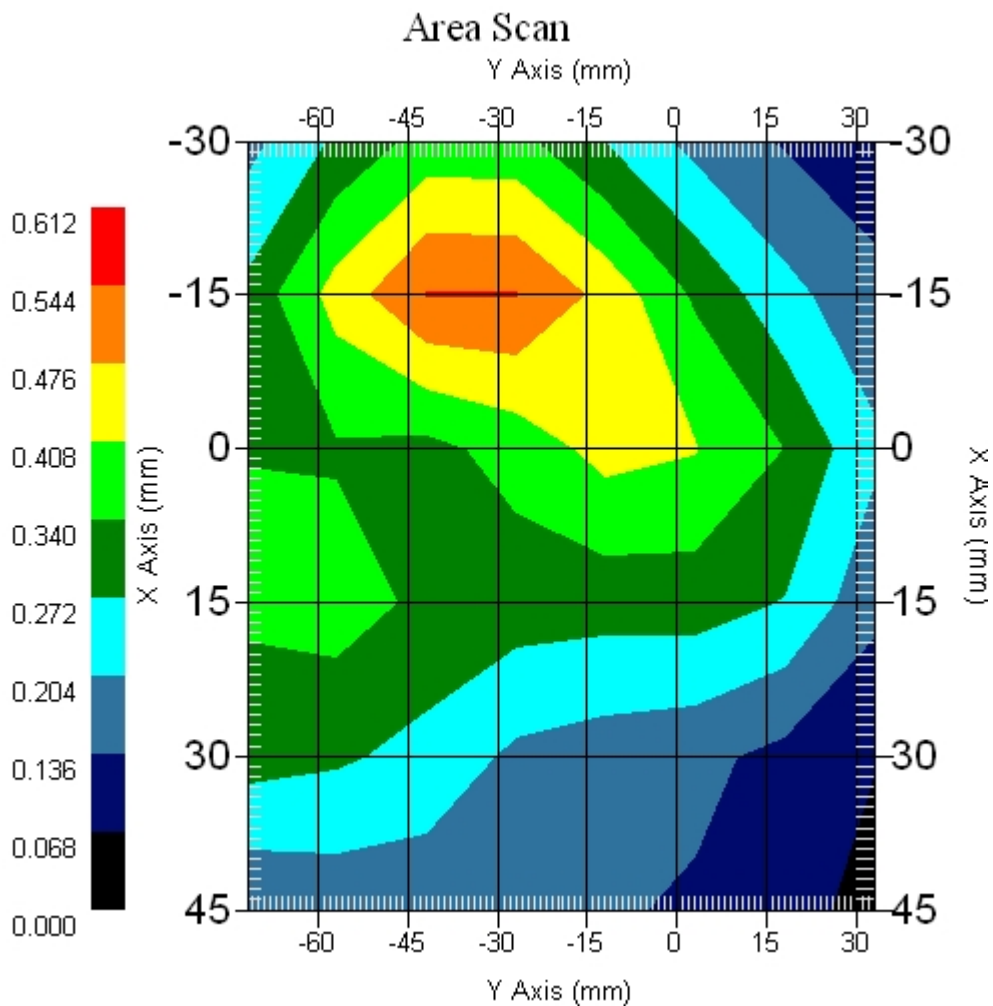
Measurement Data

Crest Factor : 1  
Scan Type : Complete  
Area Scan : 6x8x1 : Measurement x=15mm, y=15mm, z=4mm  
Zoom Scan : 5x5x8 : Measurement x=8mm, y=8mm, z=4mm

Other Data

DUT Position : Touch  
Separation : 0  
Channel : Mid - 2437MHz

Power Drift-Start : 0.436 W/kg  
Power Drift-Finish: 0.430 W/kg  
Power Drift (%) : -1.469  
Picture :



1 gram SAR value : 0.517 W/kg  
10 gram SAR value : 0.380 W/kg  
Area Scan Peak SAR : 0.547 W/kg  
Zoom Scan Peak SAR : 0.700 W/kg

■ 2437 MHz, EUT Position: Tablet,PL 836GSM

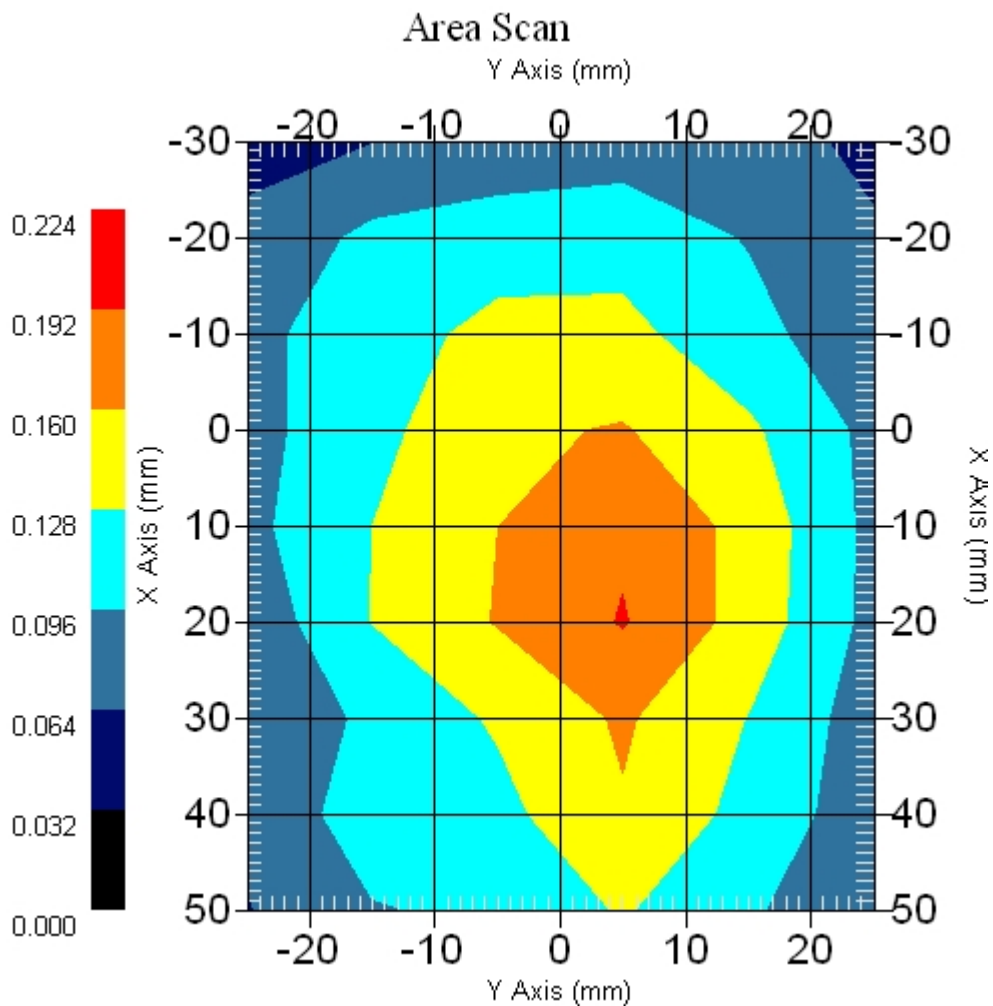
Measurement Data

Crest Factor : 1  
Scan Type : Complete  
Area Scan : 9x6x1 : Measurement x=10mm, y=10mm, z=4mm  
Zoom Scan : 5x5x8 : Measurement x=8mm, y=8mm, z=4mm

Other Data

DUT Position : Touch  
Separation : 0  
Channel : Mid - 2437MHz

Power Drift-Start : 0.183 W/kg  
Power Drift-Finish: 0.174 W/kg  
Power Drift (%) : -4.918  
Picture :



1 gram SAR value : 0.176 W/kg  
10 gram SAR value : 0.134 W/kg  
Area Scan Peak SAR : 0.194 W/kg  
Zoom Scan Peak SAR : 0.200 W/kg



■ 2437 MHz, EUT Position: Tablet,PP 836GSM

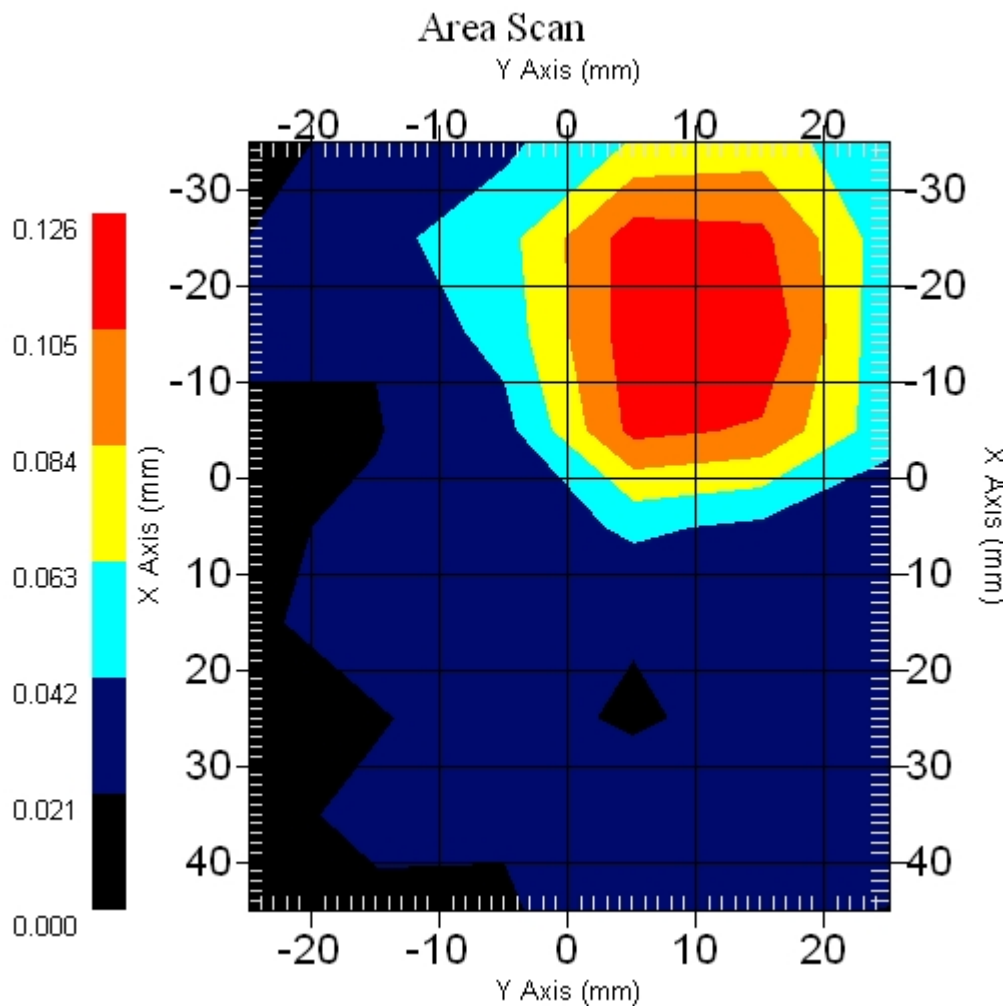
Measurement Data

Crest Factor : 1  
Scan Type : Complete  
Area Scan : 9x6x1 : Measurement x=10mm, y=10mm, z=4mm  
Zoom Scan : 5x5x8 : Measurement x=8mm, y=8mm, z=4mm

Other Data

DUT Position : Touch  
Separation : 0  
Channel : Mid - 2437MHz

Power Drift-Start : 0.044 W/kg  
Power Drift-Finish: 0.044 W/kg  
Power Drift (%) : -0.778  
Picture :



1 gram SAR value : 0.127 W/kg  
10 gram SAR value : 0.065 W/kg  
Area Scan Peak SAR : 0.123 W/kg  
Zoom Scan Peak SAR : 0.280 W/kg

■ 2437 MHz, EUT Position: Tablet,SL 836GSM

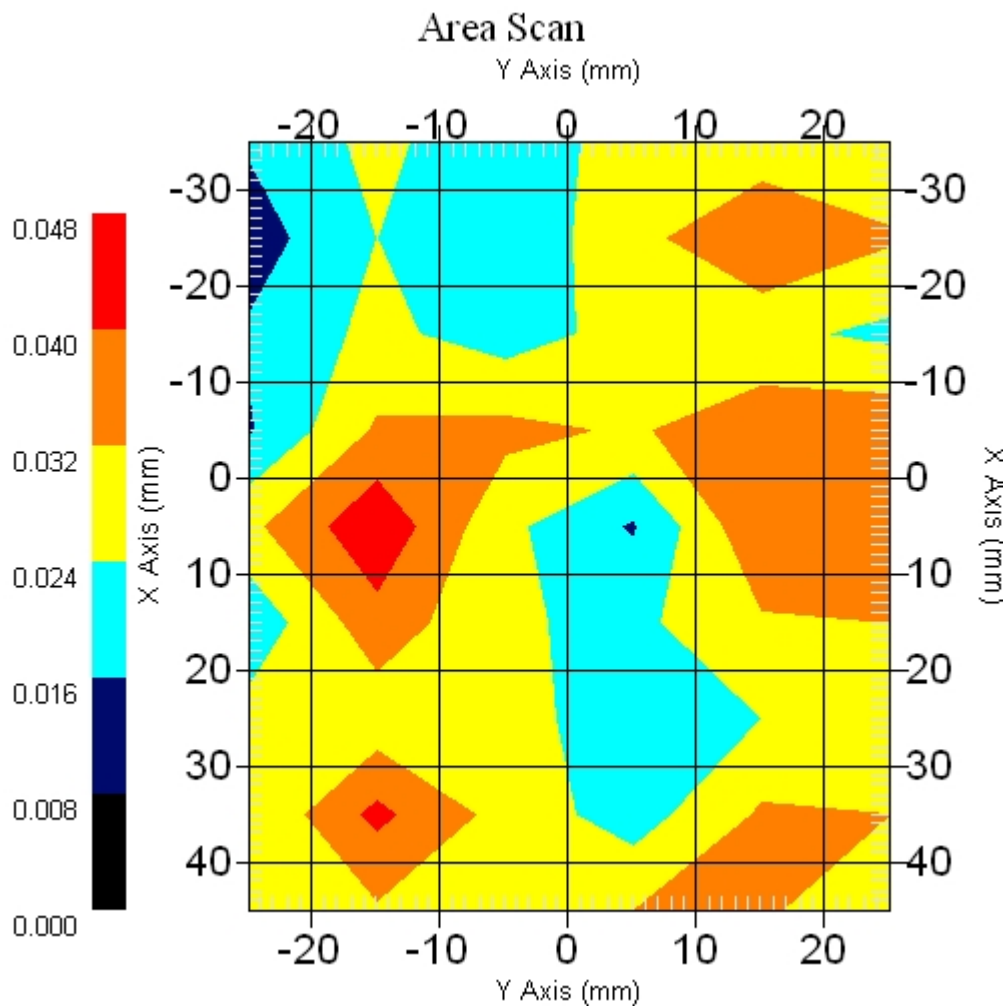
Measurement Data

Crest Factor : 1  
Scan Type : Complete  
Area Scan : 9x6x1 : Measurement x=10mm, y=10mm, z=4mm  
Zoom Scan : 5x5x8 : Measurement x=8mm, y=8mm, z=4mm

Other Data

DUT Position : Touch  
Separation : 0  
Channel : Mid - 2437MHz

Power Drift-Start : 0.038 W/kg  
Power Drift-Finish: 0.037 W/kg  
Power Drift (%) : 2.631  
Picture :



1 gram SAR value : 0.039 W/kg  
10 gram SAR value : 0.031 W/kg  
Area Scan Peak SAR : 0.046 W/kg  
Zoom Scan Peak SAR : 0.081 W/kg

■ 2437 MHz, EUT Position: Tablet,SP 836GSM

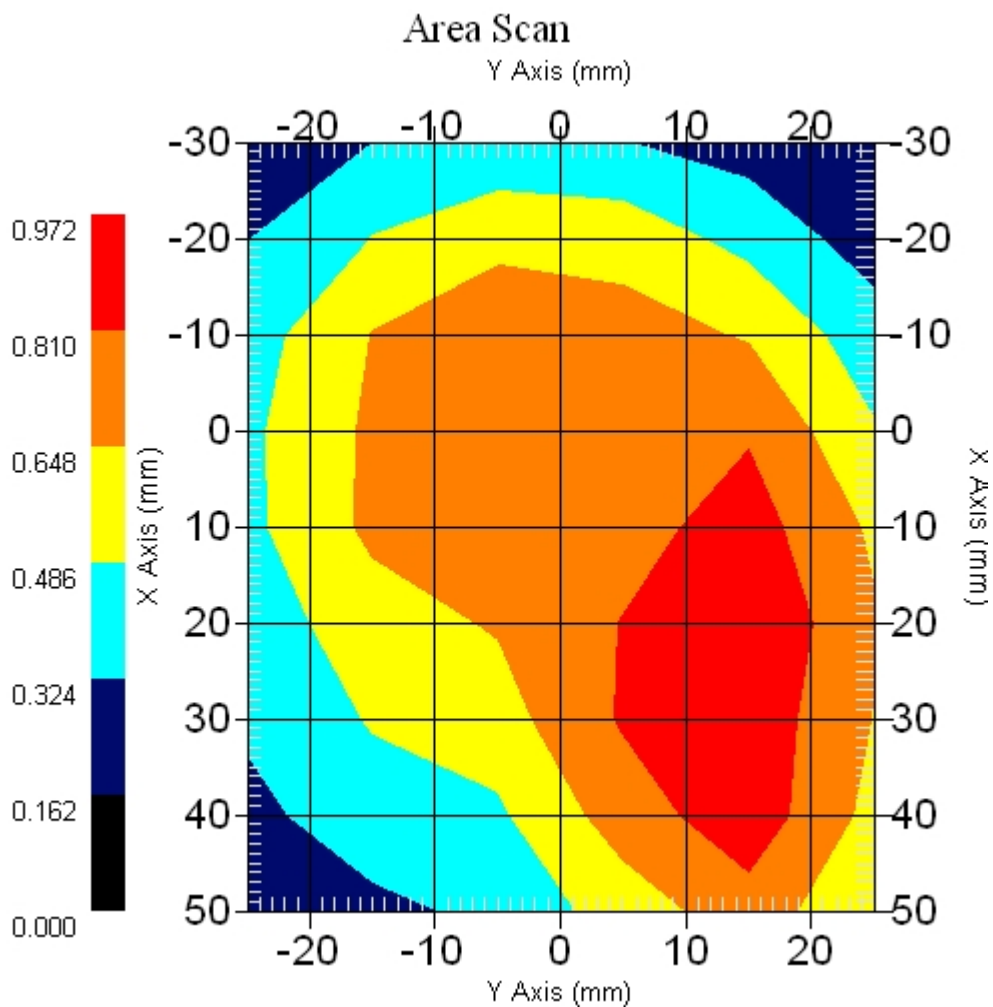
Measurement Data

Crest Factor : 1  
Scan Type : Complete  
Area Scan : 9x6x1 : Measurement x=10mm, y=10mm, z=4mm  
Zoom Scan : 5x5x8 : Measurement x=8mm, y=8mm, z=4mm

Other Data

DUT Position : Touch  
Separation : 0  
Channel : Mid - 2437MHz

Power Drift-Start : 0.773 W/kg  
Power Drift-Finish: 0.751 W/kg  
Power Drift (%) : -2.923  
Picture :



1 gram SAR value : 0.850 W/kg  
10 gram SAR value : 0.676 W/kg  
Area Scan Peak SAR : 0.971 W/kg  
Zoom Scan Peak SAR : 1.071 W/kg

■ 2437 MHz, EUT Position: Laptop 836 EGSM

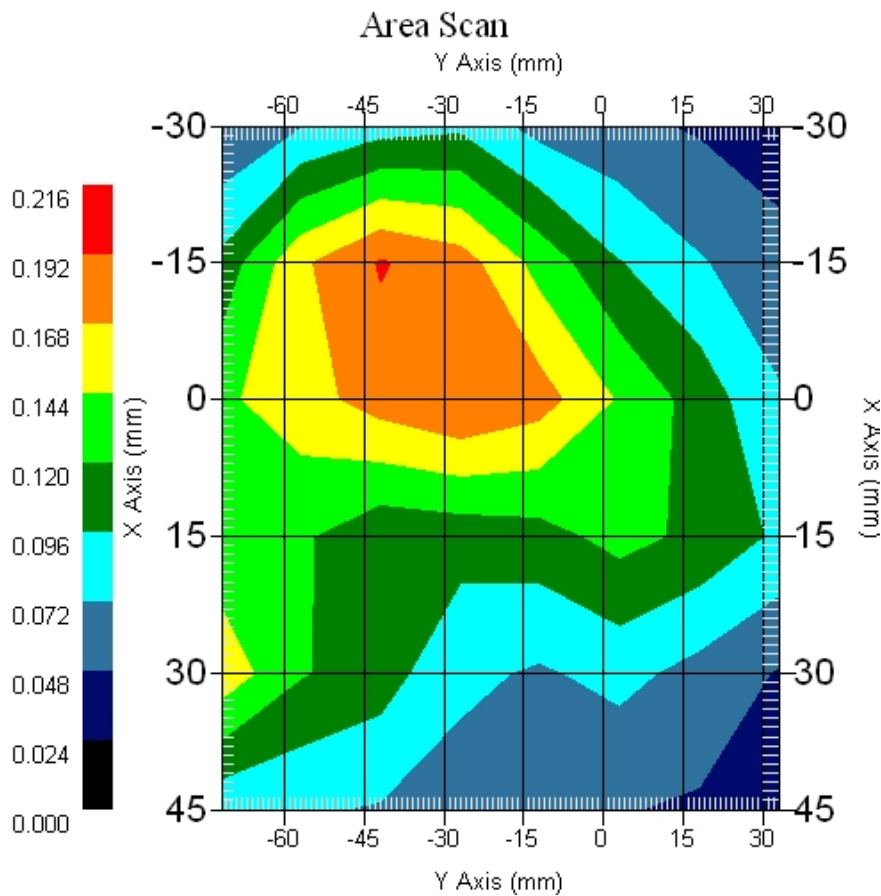
Measurement Data

Crest Factor : 1  
Scan Type : Complete  
Area Scan : 6x8x1 : Measurement x=15mm, y=15mm, z=4mm  
Zoom Scan : 5x5x8 : Measurement x=8mm, y=8mm, z=4mm

Other Data

DUT Position : Touch  
Separation : 0  
Channel : Mid - 2437MHz

Power Drift-Start : 0.145 W/kg  
Power Drift-Finish: 0.148 W/kg  
Power Drift (%) : 2.413  
Picture :



1 gram SAR value : 0.201 W/kg  
10 gram SAR value : 0.153 W/kg  
Area Scan Peak SAR : 0.194 W/kg  
Zoom Scan Peak SAR : 0.260 W/kg

■ 2437 MHz, EUT Position: Laptop 836 EGSM

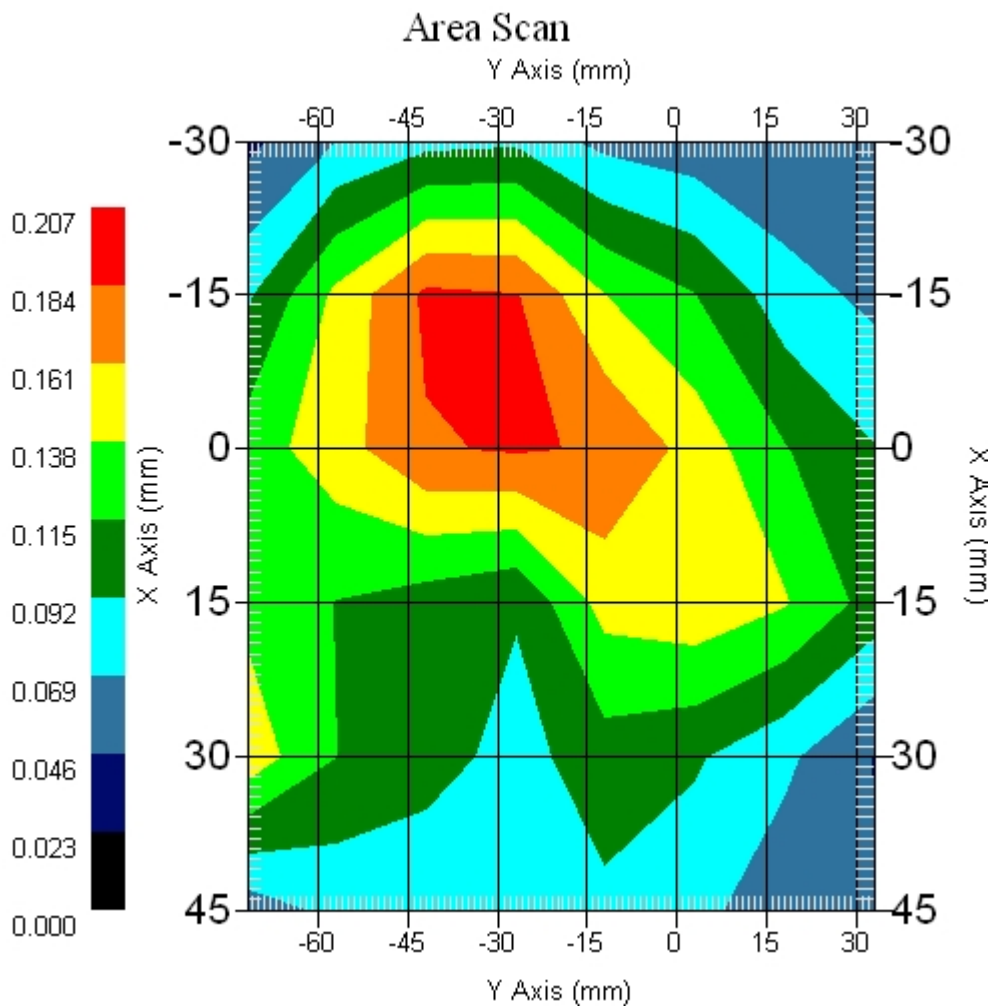
Measurement Data

Crest Factor : 1  
Scan Type : Complete  
Area Scan : 6x8x1 : Measurement x=15mm, y=15mm, z=4mm  
Zoom Scan : 5x5x8 : Measurement x=8mm, y=8mm, z=4mm

Other Data

DUT Position : Touch  
Separation : 0  
Channel : Mid - 2437MHz

Power Drift-Start : 0.177 W/kg  
Power Drift-Finish: 0.181 W/kg  
Power Drift (%) : 2.259  
Picture :



1 gram SAR value : 0.194 W/kg  
10 gram SAR value : 0.144 W/kg  
Area Scan Peak SAR : 0.188 W/kg  
Zoom Scan Peak SAR : 0.260 W/kg

■ 2437 MHz, EUT Position: Tablet,PL 836 EGSM

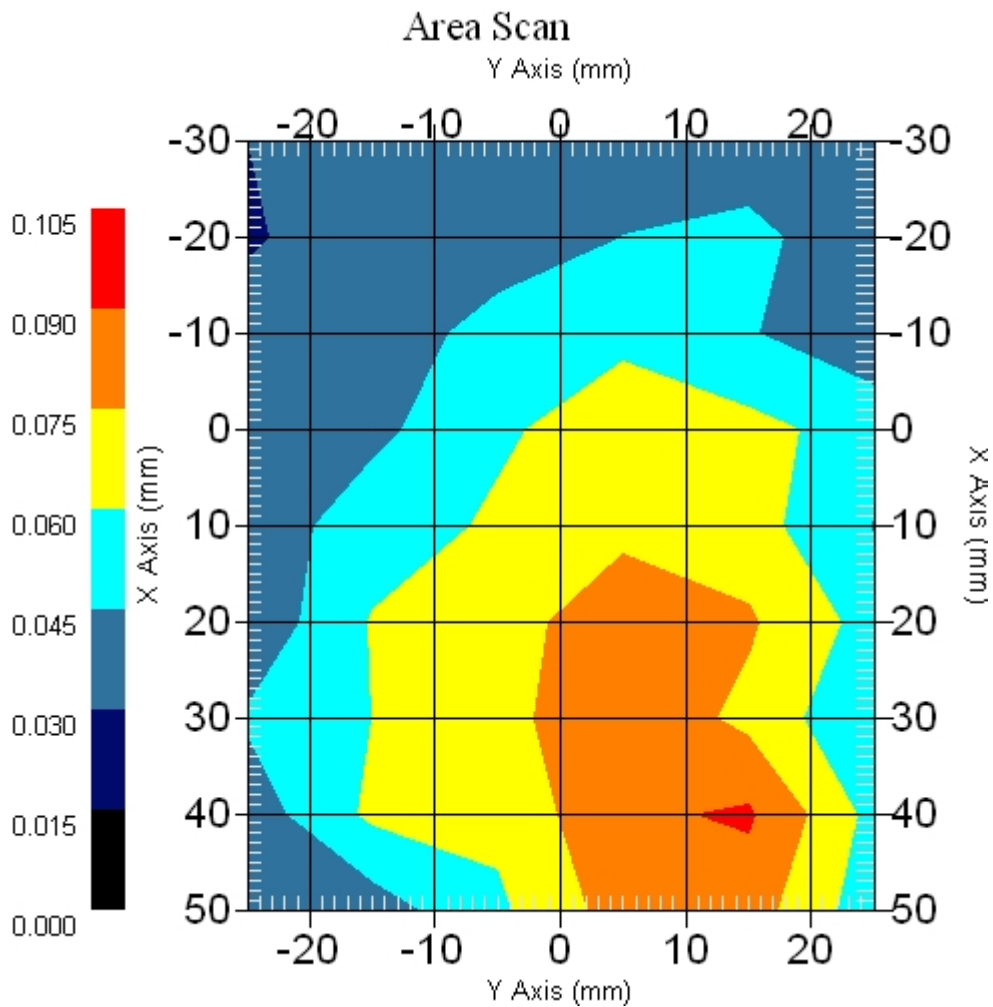
Measurement Data

Crest Factor : 1  
Scan Type : Complete  
Area Scan : 9x6x1 : Measurement x=10mm, y=10mm, z=4mm  
Zoom Scan : 5x5x8 : Measurement x=8mm, y=8mm, z=4mm

Other Data

DUT Position : Touch  
Separation : 0  
Channel : Mid - 2437MHz

Power Drift-Start : 0.068 W/kg  
Power Drift-Finish: 0.068 W/kg  
Power Drift (%) : -0.112  
Picture :



1 gram SAR value : 0.103 W/kg  
10 gram SAR value : 0.074 W/kg  
Area Scan Peak SAR : 0.092 W/kg  
Zoom Scan Peak SAR : 0.163 W/kg

■ 2437 MHz, EUT Position: Tablet,PP 836 EGSM

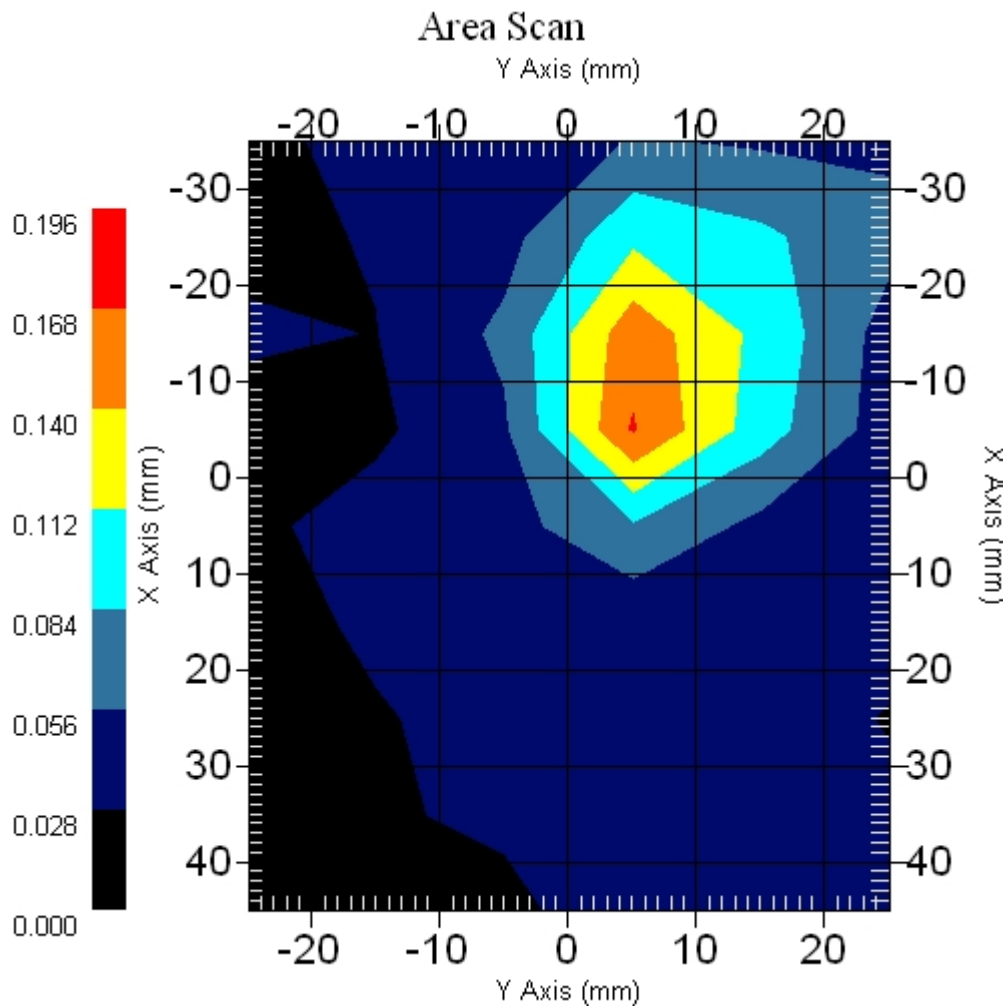
Measurement Data

Crest Factor : 1  
Scan Type : Complete  
Area Scan : 9x6x1 : Measurement x=10mm, y=10mm, z=4mm  
Zoom Scan : 5x5x8 : Measurement x=8mm, y=8mm, z=4mm

Other Data

DUT Position : Touch  
Separation : 0  
Channel : Mid - 2437MHz

Power Drift-Start : 0.079 W/kg  
Power Drift-Finish: 0.082 W/kg  
Power Drift (%) : 3.797  
Picture :



1 gram SAR value : 0.140 W/kg  
10 gram SAR value : 0.071 W/kg  
Area Scan Peak SAR : 0.170 W/kg  
Zoom Scan Peak SAR : 0.290 W/kg

■ 2437 MHz, EUT Position: Tablet,SL 836 EGSM

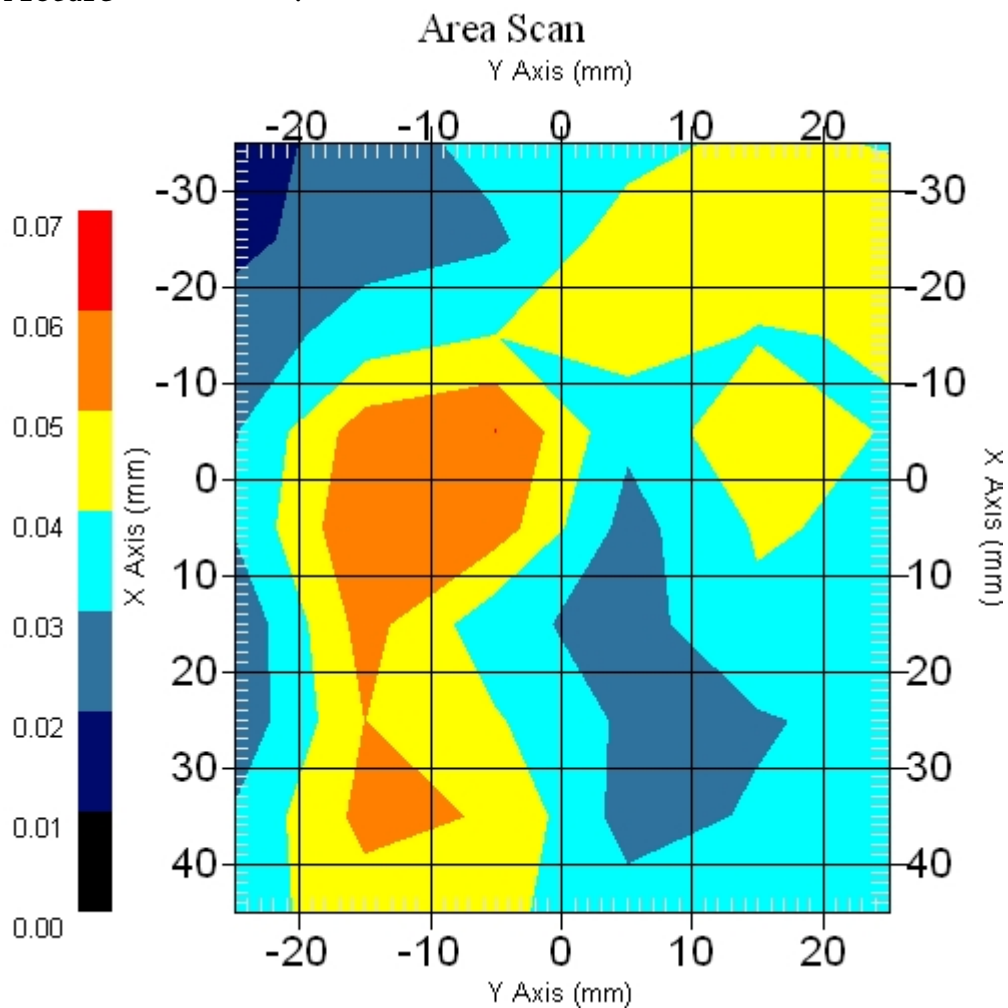
Measurement Data

Crest Factor : 1  
Scan Type : Complete  
Area Scan : 9x6x1 : Measurement x=10mm, y=10mm, z=4mm  
Zoom Scan : 5x5x8 : Measurement x=8mm, y=8mm, z=4mm

Other Data

DUT Position : Touch  
Separation : 0  
Channel : Mid - 2437MHz

Power Drift-Start : 0.038 W/kg  
Power Drift-Finish: 0.037 W/kg  
Power Drift (%) : -2.631  
Picture :



1 gram SAR value : 0.054 W/kg  
10 gram SAR value : 0.044 W/kg  
Area Scan Peak SAR : 0.060 W/kg  
Zoom Scan Peak SAR : 0.110 W/kg



■ 2437 MHz, EUT Position: Tablet,SP 836 EGSM

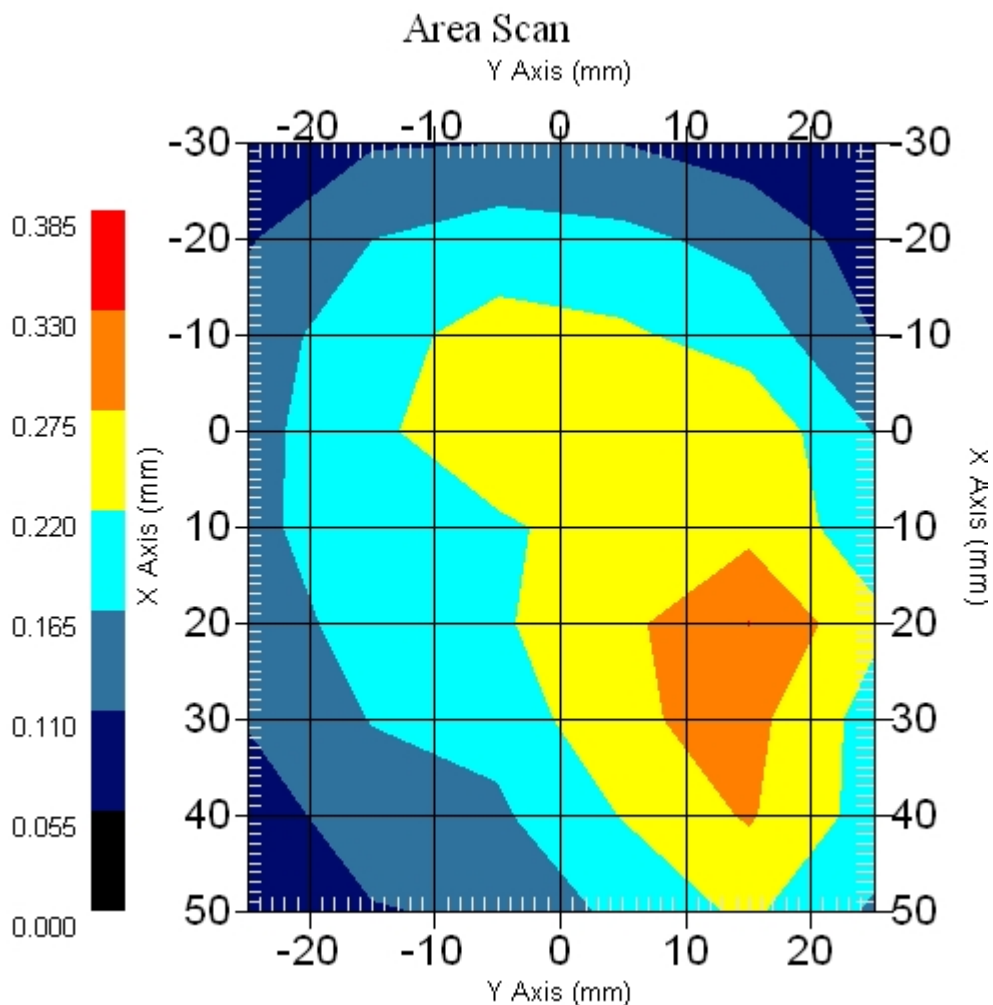
Measurement Data

Crest Factor : 1  
Scan Type : Complete  
Area Scan : 9x6x1 : Measurement x=10mm, y=10mm, z=4mm  
Zoom Scan : 5x5x8 : Measurement x=8mm, y=8mm, z=4mm

Other Data

DUT Position : Touch  
Separation : 0  
Channel : Mid - 2437MHz

Power Drift-Start : 0.271 W/kg  
Power Drift-Finish: 0.271 W/kg  
Power Drift (%) : 0.012  
Picture :



1 gram SAR value : 0.280 W/kg  
10 gram SAR value : 0.227 W/kg  
Area Scan Peak SAR : 0.331 W/kg  
Zoom Scan Peak SAR : 0.350 W/kg

■ 2437 MHz, EUT Position: Laptop 836 UMTS

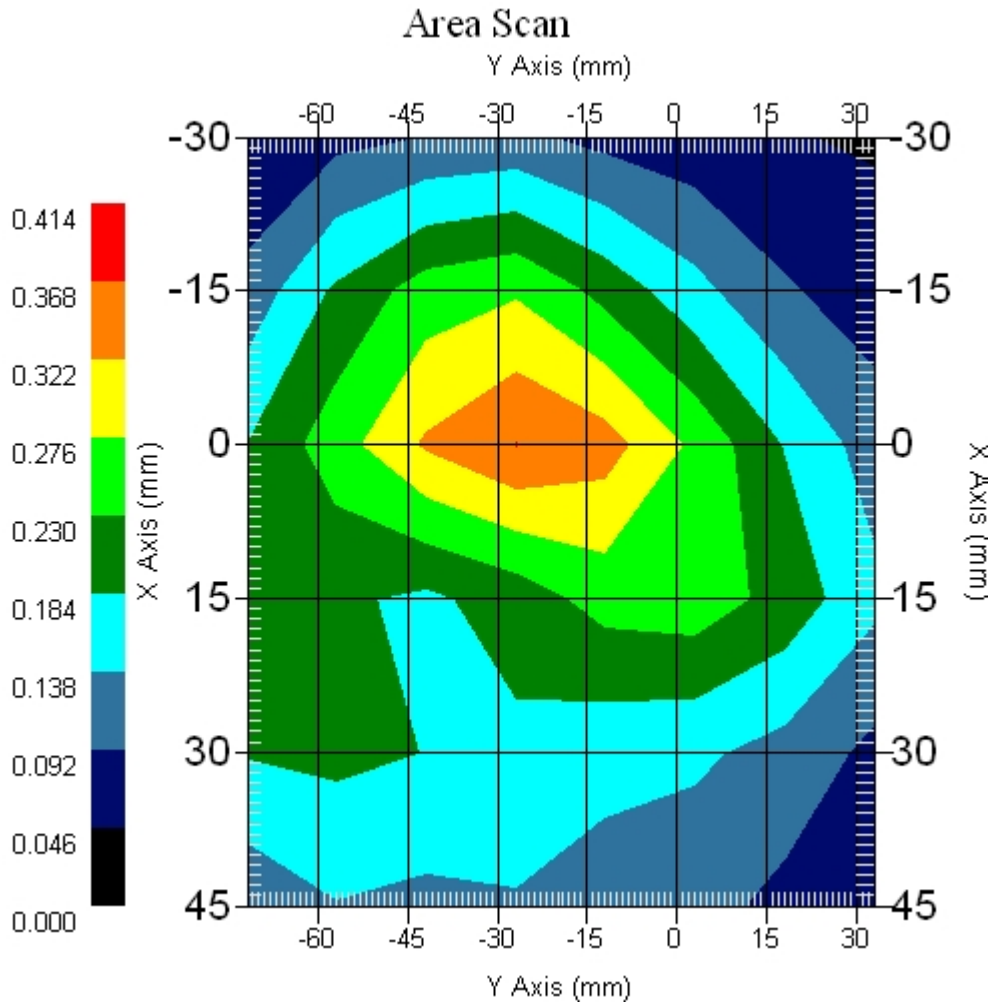
Measurement Data

Crest Factor : 1  
Scan Type : Complete  
Area Scan : 6x8x1 : Measurement x=15mm, y=15mm, z=4mm  
Zoom Scan : 5x5x8 : Measurement x=8mm, y=8mm, z=4mm

Other Data

DUT Position : Touch  
Separation : 0  
Channel : Mid - 2437MHz

Power Drift-Start : 0.292 W/kg  
Power Drift-Finish: 0.280 W/kg  
Power Drift (%) : -4.076  
Picture :



1 gram SAR value : 0.346 W/kg  
10 gram SAR value : 0.243 W/kg  
Area Scan Peak SAR : 0.369 W/kg  
Zoom Scan Peak SAR : 0.520 W/kg

■ 2437 MHz, EUT Position: Laptop 836 UMTS

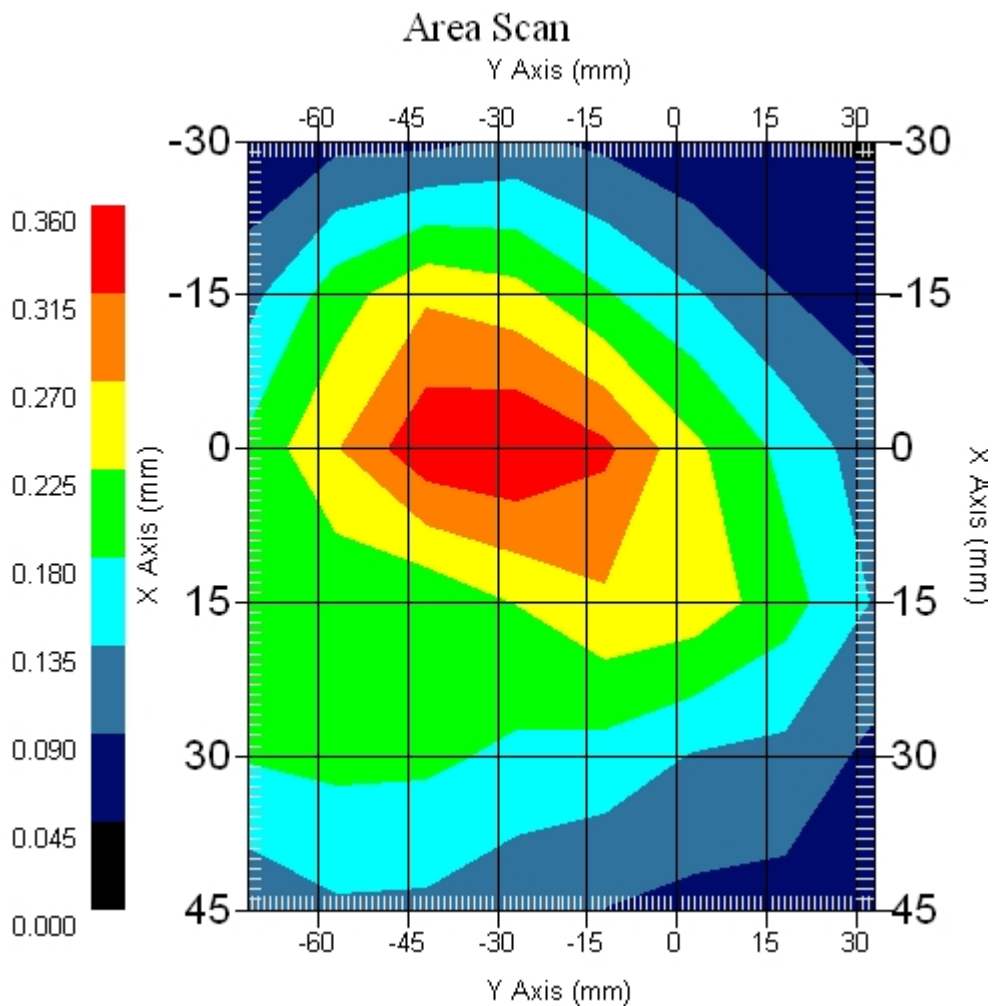
Measurement Data

Crest Factor : 1  
 Scan Type : Complete  
 Area Scan : 6x8x1 : Measurement x=15mm, y=15mm, z=4mm  
 Zoom Scan : 5x5x8 : Measurement x=8mm, y=8mm, z=4mm

Other Data

DUT Position : Touch  
 Separation : 0  
 Channel : Mid - 2437MHz

Power Drift-Start : 0.260 W/kg  
 Power Drift-Finish: 0.253 W/kg  
 Power Drift (%) : -2.889  
 Picture :



1 gram SAR value : 0.342 W/kg  
 10 gram SAR value : 0.242 W/kg  
 Area Scan Peak SAR : 0.360 W/kg  
 Zoom Scan Peak SAR : 0.470 W/kg

■ 2437 MHz, EUT Position: Tablet,PL 836 UMTS

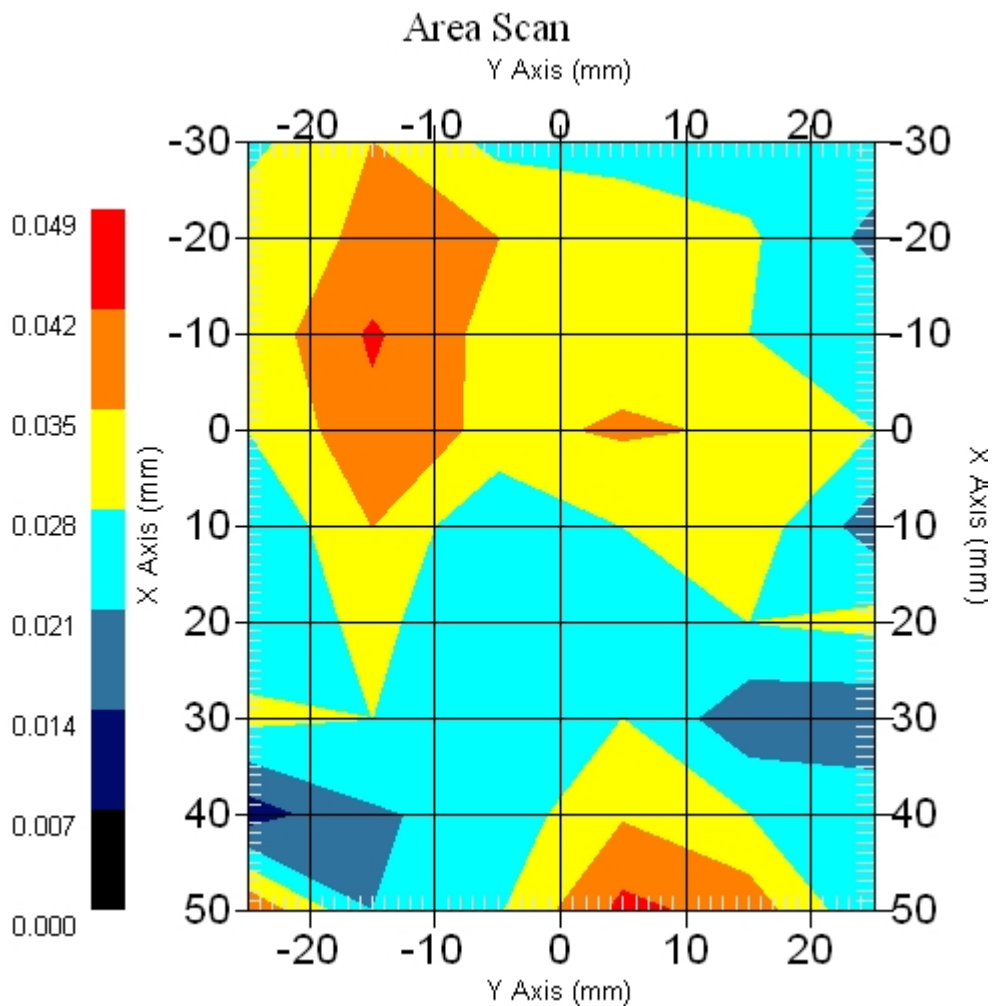
Measurement Data

Crest Factor : 1  
Scan Type : Complete  
Area Scan : 9x6x1 : Measurement x=10mm, y=10mm, z=4mm  
Zoom Scan : 5x5x8 : Measurement x=8mm, y=8mm, z=4mm

Other Data

DUT Position : Touch  
Separation : 0  
Channel : Mid - 2437MHz

Power Drift-Start : 0.038 W/kg  
Power Drift-Finish: 0.038 W/kg  
Power Drift (%) : 0.146  
Picture :



1 gram SAR value : 0.052 W/kg  
10 gram SAR value : 0.035 W/kg  
Area Scan Peak SAR : 0.044 W/kg  
Zoom Scan Peak SAR : 0.082 W/kg