



TEST REPORT

EUT Description	Wireless Module installed in Notebook PC
Brand Name	Intel®
Model Name	BE201D2W
FCC ID	PD9BE201D2
Date of Test Start/End	2024-10-28 / 2024-11-05
Features	2x2 Wi-Fi- Bluetooth® (see section 5)
Description	Platform: Yoga Slim 9 14ILL10 + Speed & Amphenol antennas

Applicant	Intel Corporation SAS
Address	425 Rue de Goa – Le Cargo B6 – 06600 Antibes, FRANCE
Contact Person	Benjamin Lavenant
Telephone/Fax/ Email	Benjamin.lavenant@intel.com

Reference Standards	FCC 47 CFR Part §2.1093 (see section 1)	
RF Exposure Environment	Portable devices - General population/uncontrolled exposure	
Exposure Conditions	Body worn	
	SAR Result	SAR Limit
Maximum Power Density Result & Limit	4.11 W/m ² (4cm ²)	10 W/m ² (4cm ²)
Maximum SAR Result & Limit	0.76 W/kg (1g)	1.6 W/kg (1g)
Min. test separation distance	0mm to phantom, 4.50mm to antenna edge (SAR), 2mm to probe tip (PD)	

Test Report identification	240829-01.TR01
Revision Control	Rev. 00 This test report revision replaces any previous test report revision (see section 8)

The test results relate only to the samples tested.
Reference to accreditation shall be used only by full reproduction of test report.

Issued by _____ Reviewed by _____

Yamine HADDAD
(Test Engineer)

Zayd OUACHICHA
(Technical Manager)

Intel Corporation S.A.S – WRF Lab
425 rue de Goa – Le Cargo B6 - 06600 Antibes, France
Tel. +33493001400 / Fax +33493001401

Table of Contents

1.	Standards, reference documents and applicable test methods	4
2.	General conditions, competences and guarantees	4
3.	Environmental Conditions.....	5
4.	Test samples.....	5
5.	EUT Features	6
6.	Remarks and comments.....	10
7.	Test Verdicts summary.....	10
8.	Document Revision History	10
9.	SAR Definition	11
10.	Power Density Definition.....	11
11.	SAR Test & System Description	12
11.1.	SPEAG SAR MEASUREMENT SYSTEM	12
11.2.	TEST EQUIPMENT LIST.....	19
11.3.	TISSUE SIMULANT LIQUID.....	19
11.4.	MEASUREMENT UNCERTAINTY EVALUATION.....	20
11.5.	RF EXPOSURE LIMITS.....	21
12.	PD Test & System Description.....	22
12.1.	SPEAG FREE SPACE MEASUREMENT SYSTEM.....	22
12.2.	TEST EQUIPMENT LIST.....	26
12.3.	MEASUREMENT UNCERTAINTY EVALUATION.....	27
12.4.	RF EXPOSURE LIMITS.....	28
Annex A.	Test Results	29
A.1	TEST CONDITIONS.....	29
A.1.1	Test SAR Test positions relative to the phantom.....	29
A.1.2	Test signal, Output power and Test Frequencies	29
A.1.3	Evaluation Exclusion and Test Reductions.....	30
A.2	CONDUCTED POWER MEASUREMENTS.....	33
A.2.1	WLAN 2.4GHz.....	33
A.2.2	WLAN 5GHz (U-NII)	35
A.2.3	WLAN 6-7GHz (U-NII)	41
A.3	TISSUE PARAMETERS MEASUREMENT	43
A.4	SYSTEM CHECK MEASUREMENTS	43
A.4.1	E-Field.....	44
A.4.2	H-Field.....	44
A.4.3	Local Power Density.....	44
A.4.4	Averaged Power Density	44
A.5	SAR TEST RESULTS	45
A.5.1	Bluetooth & 802.11b/g/n/ax/be – 2.4GHz - DTS.....	45
A.5.2	802.11a/n/ac/ax/be – 5.3 GHz – U-NII-2A.....	45
A.5.3	802.11a/n/ac/ax/be – 5.6 GHz – U-NII-2C.....	45
A.5.4	802.11a/n/ac/ax/be – 5.8 GHz – U-NII-3.....	45
A.5.5	802.11a/n/ac/ax/be – 5.9 GHz – U-NII-4.....	46
A.5.6	802.11ax/be – 6.2 GHz – U-NII-5.....	46
A.5.7	802.11ax/be – 6.5 GHz – U-NII-6.....	46
A.5.8	802.11ax/be – 6.7 GHz – U-NII-7.....	46
A.5.9	802.11ax/be – 7.0 GHz – U-NII-8.....	47

A.6	PD TEST RESULTS.....	48
A.6.1	802.11ax/be – 6.2 GHz – U-NII-5.....	48
A.6.2	802.11ax/be – 6.5 GHz – U-NII-6.....	48
A.6.3	802.11ax/be – 6.7 GHz – U-NII-7.....	48
A.6.4	802.11ax/be – 7.0 GHz – U-NII-8.....	48
A.7	SAR MEASUREMENT VARIABILITY.....	49
A.8	SIMULTANEOUS TRANSMISSION SAR EVALUATION	50
Annex B.	Test System Plots.....	51
Annex C.	TSL Dielectric Parameters.....	73
C.1	HEAD 2450MHZ	73
C.2	HEAD 5200MHZ-5900MHZ	74
C.3	HEAD 6000MHZ	75
Annex D.	Calibration Certificates	76
Annex E.	Photographs	78
E.1	TEST SAMPLE	78
E.2	TEST POSITIONS.....	80
E.3	ANTENNA HOST PLATFORM LOCATION AND ADJACENT EDGE POSITIONS RELATIVE TO THE BODY.....	81
E.4	PHANTOM LIQUID LEVEL DURING MEASUREMENTS	82

1. Standards, reference documents and applicable test methods

FCC	<ol style="list-style-type: none"> 1. FCC Title 47 CFR Part §2.1093 – Radiofrequency radiation exposure evaluation: portable devices. 2023-10-01 Edition 2. FCC OET KDB 447498 D04 interim v01 General RF Exposure Guidance v01– RF Exposure Procedures and Equipment Authorization Policies for Mobile and Portable Devices. 3. FCC OET KDB 616217 D04 v01r02 – SAR Evaluation Considerations for Laptop, Notebook, Netbook and Tablet Computers. 4. FCC OET KDB 865664 D01 v01r04 – SAR Measurement Requirements for 100 MHz to 6 GHz. 5. FCC OET KDB 865664 D02 v01r02 – RF Exposure Compliance Reporting and Documentation Considerations. 6. IEEE Std 1528-2013 – IEEE Recommended Practice Determining the Peak Spatial-Average Specific Absorption Rate (SAR) in the Human Head from Wireless Communication Devices: Measurement Techniques. 7. RF Exposure Policies and Procedures: TCB Workshop – April 2021 8. IEC/IEEE 62209-1528:2020 Measurement procedure for the assessment of specific absorption rate of human exposure to radio frequency fields from hand-held and body-mounted wireless communication devices – Part 1528: Human models, instrumentation, and procedures (Frequency range of 4 MHz to 10 GHz) 9. 987594 D04 UN6GHZ Pre-Approval Guidance Checklist v01 10. SPEAG Application Note – 5G Compliance Testing with DASY6 (5GModule V1.0Beta) 11. SPEAG Application Note – 5G Compliance Testing with DASY6/8 (5GModule V5.0)
-----	---

2. General conditions, competences and guarantees

- ✓ Tests performed under FCC standards identified in section 1 are covered by A2LA accreditation.
- ✓ Intel Corporation SAS Wireless RF Lab (Intel WRF Lab) is an ISO/IEC 17025:2017 laboratory accredited by the American Association for Laboratory Accreditation (A2LA) with the certificate number 3478.01.
- ✓ Intel Corporation SAS Wireless RF Lab (Intel WRF Lab) is an Accredited Test Firm recognized by the FCC, with Designation Number FR0011.
- ✓ Intel WRF Lab only provides testing services and is committed to providing reliable, unbiased test results and interpretations.
- ✓ Intel WRF Lab is liable to the client for the maintenance of the confidentiality of all information related to the item under test and the results of the test.
- ✓ Intel WRF Lab has developed calibration and proficiency programs for its measurement equipment to ensure correlated and reliable results to its customers.
- ✓ This report is only referred to the item that has undergone the test.
- ✓ This report does not imply an approval of the product by the Certification Bodies or competent Authorities.

3. Environmental Conditions

✓ At the site where the measurements were performed the following limits were not exceeded during the tests:

Temperature	Avg:20.14°C Min:20.01°C Max:20.83°C
Humidity	Avg:47.31% Min:40.47% Max:54.31%
Liquid Temperature	Avg:20.95°C Min:20.17°C Max:20.42°C

4. Test samples

Sample	Control #	Description	Model	Serial #	Date of receipt	Note
#01	240829-01. S01	Wireless Module installed in Notebook PC	Yoga Slim 9 14ILL10	2022538100049	2024-10-18	Speed Antenna
#01	240829-01. S02	Wireless Module installed in Notebook PC	Yoga Slim 9 14ILL10	2022538100101	2024-10-18	Amphenol Antenna

5. EUT Features

The herein information is provided by the customer

Intel WRF Lab declines any responsibility for the accuracy of the stated customer provided information, especially if it has any impact on the correctness of test results presented in this report.

Brand Name	Intel®			
Model Name	BE201D2W			
Software Version	DRTU.06643.23.60.0			
Driver Version	23.60.5.4			
Prototype / Production	Production			
Host Identification	Yoga Slim 9 14ILL10			
Supported Radios	802.11b/g/n/ax/be	2.4GHz (2400.0 – 2483.5 MHz)		
	802.11a/n/ac/ax/be	5.2GHz (5150.0 – 5350.0 MHz)		
		5.6GHz (5470.0 – 5725.0 MHz)		
		5.8GHz (5725.0 – 5850.0 MHz)		
		5.9GHz (5850.0 – 5895.0 MHz)		
	802.11ax/be	6.0GHz (5925.0 – 7125.0 MHz)*		
	Bluetooth	2.4GHz (2400.0 – 2483.5 MHz)		
Antenna Information	Transmitter	Main (Ant 2/Tx2) / Chain B(2)	Aux (Ant 1/Tx1) / Chain A(1)	
	Manufacturer	Amphenol	Amphenol	
	Antenna type	PIFA	PIFA	
	Part number	DC330024K00	DC330024K00	
	Transmitter	Main (Ant 2/Tx2) / Chain B(2)	Aux (Ant 1/Tx1) / Chain A(1)	
	Manufacturer	Speed	Speed	
	Antenna type	PIFA	PIFA	
	Part number	DC330024L00	DC330024L00	
	See Annex E for more details on antennas location.			
	Simultaneous Transmission Configurations	WLAN 2.4GHz Main + BT Aux		
WLAN 2.4GHz Main + WLAN 2.4GHz Aux				
WLAN 5GHz Main + BT Aux				
WLAN 5GHz Main + WLAN 5GHz Aux				
WLAN 5GHz Main + WLAN 5GHz Aux + BT Aux				
WLAN 6GHz Main + BT Aux				
WLAN 6GHz Main + WLAN 6GHz Aux				
Additional Information	WLAN 6GHz Main + WLAN 6GHz Aux + BT Aux			
	No WWAN transmitter is considered in this report			
	5.60-5.65 GHz band (TDWR) is supported by the device			
	Band gap is supported by the device			

Supported Radios

Mode	Duty Cycle	Modulation	Band	UL Freq Range (MHz)	Measured Max. Conducted Power (dBm)
BDR/EDR	77%	GFSK $\pi/4$ DQPSK 8DPSK	2.4GHz	2400-2483.5	14.46
Bluetooth LE	31%	GFSK	2.4GHz	2400-2483.5	NM
802.11b/g/n/ax/be	100%	BPSK QPSK 16QAM 64QAM	2.4GHz	2400-2483.5	15.50
802.11a/n/ac/ax/be	100%	BPSK QPSK 16QAM 64QAM 256QAM	5.2GHz	5150-5250	NM
			5.3GHz	5250-5350	11.48
			5.6GHz	5475-5725	12.03
			5.8GHz	5725-5850	12.14
			5.9GHz	5850-5895	11.86
802.11ax/be	100%	BPSK QPSK 16QAM 64QAM 256QAM	6.2GHz	5955-6415	11.29
			6.5GHz	6435-6515	11.02
			6.7GHz	6535-6855	11.47
			7.0GHz	6875-7125	11.49

NM: Not Measured

Maximum Output power specification + Tune up tolerance limit, as specified by the client			SISO mode Tablet	
Equipment Class	Mode	BW (MHz)	Aux (dBm)	Main (dBm)
DTS	802.11b	20	15.50	15.50
	802.11g	20	15.50	15.50
	802.11n20	20	15.50	15.50
	802.11ax20/be20	20	15.50	15.50
	802.11n40	40	15.50	15.50
	802.11ax40/be40	40	15.50	15.50
U-NII-1	802.11a	20	12.00	12.00
	802.11n20	20	12.00	12.00
	802.11ax20/be20	20	12.00	12.00
	802.11n40	40	12.00	12.00
	802.11ax40/be40	40	12.00	12.00
	802.11ac80	80	12.00	12.00
	802.11ax80/be80	80	12.00	12.00
U-NII-2A	802.11a	20	12.00	12.00
	802.11n20	20	12.00	12.00
	802.11ax20/be20	20	12.00	12.00
	802.11n40	40	12.00	12.00
	802.11ax40/be40	40	12.00	12.00
	802.11ac80	80	12.00	12.00
	802.11ax80/be80	80	12.00	12.00
	802.11ac160	160	12.00	12.00
	802.11ax160/be160	160	12.00	12.00
U-NII-2C	802.11a	20	12.50	12.50
	802.11n20	20	12.50	12.50
	802.11ax20/be20	20	12.50	12.50
	802.11n40	40	12.50	12.50
	802.11ax40/be40	40	12.50	12.50
	802.11ac80	80	12.50	12.50
	802.11ax80/be80	80	12.50	12.50
	802.11ac160	160	12.50	12.50
	802.11ax160/be160	160	12.50	12.50
U-NII-3	802.11a	20	12.50	12.50
	802.11n20	20	12.50	12.50
	802.11ax20/be20	20	12.50	12.50
	802.11n40	40	12.50	12.50
	802.11ax40/be40	40	12.50	12.50
	802.11ac80	80	12.50	12.50
	802.11ax80/be80	80	12.50	12.50

U-NII-4	802.11a	20	12.50	12.50
	802.11n20	20	12.50	12.50
	802.11ax20/be20	20	12.50	12.50
	802.11n40	40	12.50	12.50
	802.11ax40/be40	40	12.50	12.50
	802.11ac80	80	12.50	12.50
	802.11ax80/be80	80	12.50	12.50
	802.11ac160	160	12.50	12.50
802.11ax160/be160	160	12.50	12.50	
U-NII-5	802.11ax/be	20	11.50	11.50
		40	11.50	11.50
		80	11.50	11.50
		160	11.50	11.50
	802.11be	320	11.50	11.50
U-NII-6	802.11ax/be	20	5.75	5.75
		40	8.75	8.75
		80	11.50	11.50
		160	11.50	11.50
U-NII-7	802.11ax/be	20	11.50	11.50
		40	11.50	11.50
		80	11.50	11.50
		160	11.50	11.50
	802.11be	320	11.50	11.50
U-NII-8	802.11ax/be	20	5.75	5.75
		40	8.75	8.75
		80	11.50	11.50
		160	11.50	11.50
	802.11be	320	11.50	11.50
BT	Bluetooth BDR	1		14.50
	Bluetooth EDR2	1		14.50
	Bluetooth EDR3	1		14.50
	BLE	2		14.50

6. Remarks and comments

1. The conducted values are obtained by applying the BIOS SAR power values to the BE201D2W Intel module installed in the Yoga Slim 9 14ILL10 identified in this report, as requested by the customer.
2. Simultaneous transmission results shown in this report are based on the highest SAR/PD value obtained among all antenna manufacturers.
3. Only the plots for the test positions with the highest measured SAR/PD per band/mode are included in Annex B as required per FCC OET KDB 865664 D02, paragraph 2.3.8.

7. Test Verdicts summary

The statement of conformity to applicable standards in the table below are based on the measured values, without taking into account the measurement uncertainties.

Standard	Band	Highest Reported SAR (1g) (W/kg)	Verdict
802.11b/g/n/ax/be	2.4GHz	0.76	P
Bluetooth	2.4GHz	0.18	P
802.11a/n/ac/ax/be	5.2GHz	NM	NA
	5.3GHz	0.54	P
	5.6GHz	0.57	P
	5.8GHz	0.55	P
	5.9GHz	0.63	P
802.11ax/be	6.2GHz	0.60	P
	6.5GHz	0.69	P
	6.7GHz	0.66	P
	7.0GHz	0.71	P

Standard	Band	Highest Reported PStot avg [W/m2] 4cm2	Verdict
802.11ax/be	6.2GHz	4.11	P
	6.5GHz	3.02	P
	6.7GHz	2.68	P
	7.0GHz	4.03	P

P: Pass
 F: Fail
 NM: Not Measured
 NA: Not Applicable

According to the FCC OET KDB 690783 D01, this is the summary of the values for the Grant Listing:

Exposure Condition	Highest Reported SAR (1g) (W/kg)		
	Equipment Class		
	DTS	DSS	U-NII
Body Worn	0.76	0.18	0.71
Simultaneous Tx	Sum-SAR: 1.28 SPLSR: NA	Sum-SAR: 1.40 SPLSR: NA	Sum-SAR:1.40 SPLSR: NA

Considering the results of the performed test according to FCC 47CFR Part 2.1093 the item under test is IN COMPLIANCE with the requested specifications specified in Section1. Standards, reference documents and applicable test methods

8. Document Revision History

Revision #	Modified by	Revision Details
Rev. 00	Y. HADDAD	First Issue

9. SAR Definition

Specific Absorption rate is defined as the time derivative of the incremental energy (dW) absorbed by (dissipated in) and incremental mass (dm) contained in a volume element (dV) of a given density (ρ).

$$SAR = \frac{d}{dt} \cdot \left(\frac{dW}{dm} \right) = \frac{d}{dt} \cdot \left(\frac{dW}{\rho \cdot dV} \right)$$

SAR is expressed in units of watts per kilogram (W/kg). SAR can be related to the electric field at a point by

$$SAR = \frac{\sigma |E|^2}{\rho}$$

Where:

σ = Conductivity of the tissue (S/m)

ρ = Mass density of the tissue (kg/m³)

E = RMS electric field strength (V/m)

10. Power Density Definition

The power density for an electromagnetic field represents the rate of energy transfer per unit area.

The local power density (i.e. Poynting vector) at a given spatial point is deduced from electromagnetic fields by the following formula:

$$\vec{P}_{local} = \frac{1}{2} \text{Re} (\vec{E} \times \vec{H}^*)$$

Where \vec{E} is the complex electric field peak phasor and \vec{H}^* is the complex conjugate magnetic field peak phasor.

This power density is also called "single-point" or "spot power density".

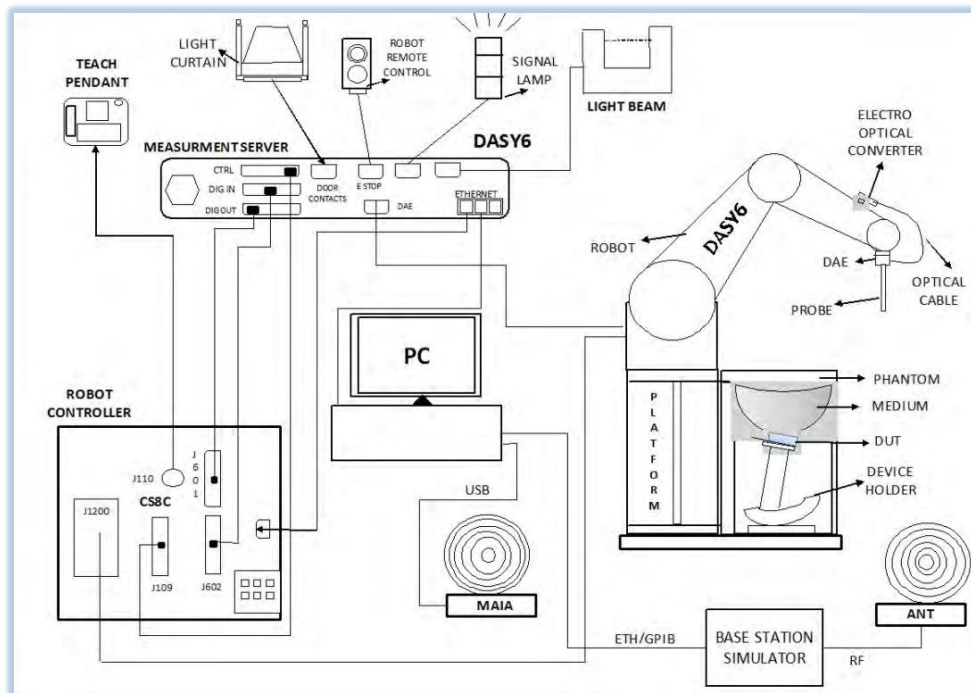
Considering that the FCC's Maximum Permissible Exposure (MPE) limit is applicable on the average power density inside 1cm² area, the single point power densities in the evaluation plane should be averaged inside the 1cm² area.

11. SAR Test & System Description

11.1. SPEAG SAR Measurement System

SAR Measurement Setup:

The DASY6/8 system for performing compliance tests consists of the following items:



- ✓ A standard high precision 6-axis robot (Stäubli TX/RX family) with controller, teach pendant and software. It includes an arm extension for accommodating the data acquisition electronics (DAE)
- ✓ An isotropic field probe optimized and calibrated for the targeted measurements.
- ✓ A data acquisition electronics (DAE) which performs the signal amplification, signal multiplexing, AD-conversion, offset measurements, mechanical surface detection, collision detection, etc. The signal is optically transmitted to the EOC.
- ✓ The Electro-optical Converter (EOC) performs the conversion from optical to electrical signals for the digital communication to the DAE. The EOC signal is transmitted to the measurement server.
- ✓ The function of the measurement server is to perform the time critical tasks such as signal filtering, control of the robot operation and fast movements interrupts.
- ✓ The Light Beam used is for probe alignment. This improves the (absolute) accuracy of the probe positioning.
- ✓ A computer running Windows professional operating system and the DASY6/8 software.
- ✓ Remote control and teach pendant as well as additional circuitry for robot safety such as warning lamps, etc.
- ✓ The phantom, the device holder and other accessories according to the targeted measurement.
- ✓ MAIA is a hardware interface (Antenna) used to evaluate the modulation and audio interference characteristics of RF signals.
- ✓ ANT is an ultra-wideband antenna for use with the base station simulators over 698 MHz to 6GHz.
- ✓ The base station simulator is an equipment used for SAR cellular tests in order to emulate the cellular signals characteristics and behavior between a regular base station and the equipment under test.
- ✓ Tissue simulating liquid.
- ✓ System Validation dipoles.
- ✓ Network emulator or RF test tool.

E-Field Measurement Probe:

The probe is constructed using three orthogonal dipole sensors arranged on an interlocking, triangular prism core. The probe has built-in shielding against static charges and is contained within a PEEK cylindrical enclosure material at the tip.



The probe's characteristics are:

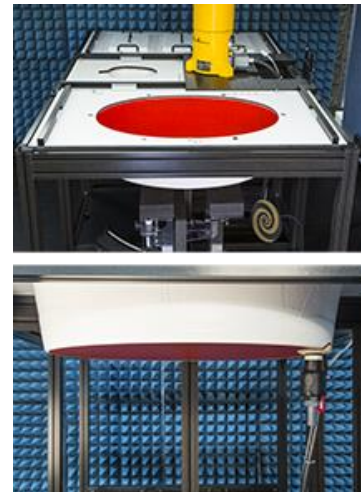
Frequency Range	30MHz – 6GHz
Length	337 mm
Probe tip external diameter	2.5 mm
Typical distance between dipoles and the probe tip	1 mm
Axial Isotropy (in human-equivalent liquids)	±0.3 dB
Hemispherical Isotropy (in human-equivalent liquids)	±0.5 dB
Linearity	±0.2 dB
Maximum operating SAR	100 W/kg
Lower SAR detection threshold	0.001 W/kg

Flat Phantom:

Phantom for compliance testing of handheld and body-mounted wireless devices in the frequency range of 30 MHz to 6 GHz. ELI is fully compatible with the IEC 62209-2 standard and all known tissue simulating liquids. ELI has been optimized regarding its performance and can be integrated into our standard phantom tables. A cover prevents evaporation of the liquid. Reference markings on the phantom allow installation of the complete setup, including all predefined phantom positions and measurement grids, by teaching three points. The phantom is compatible with all SPEAG dosimetric probes and dipoles.

The phantom's characteristics are:

Material	Vinylester, glass fiber reinforced (VE-GF)
Shell thickness	2 mm ± 0.2 mm
Filling volume	30 Liters approx.
Dimensions	Major axis: 600mm / Minor axis: 400mm



Device Positioner:

The SAR in the phantom is approximately inversely proportional to the square of the distance between the source and the liquid surface. For a source at 5 mm distance, a positioning uncertainty of 0.5 mm would produce a SAR uncertainty of 20%. Accurate device positioning is therefore crucial for accurate and repeatable measurements. The positions in which the devices must be measured are defined by the standards.



The DASY device holder is designed to cope with the different positions given in the standard. It has two scales for device rotation (with respect to the body axis) and device inclination (with respect to the line between the ear reference points). The rotation center for both scales is the ear reference point (ERP). Thus the device needs no repositioning when changing the angles.

The DASY device holder is constructed of low-loss POM material having the following dielectric parameters: relative permittivity $\epsilon=3$ and loss tangent $\delta=0.02$. The amount of dielectric material has been reduced in the closest vicinity of the device, since measurements have suggested that the influence of the clamp on the test results could thus be lowered.

A simple but effective and easy-to-use extension for the Mounting Device; facilitates testing of larger devices according to IEC 62209-2 (e.g., laptops, cameras, etc.); lightweight and fits easily on the upper part of the Mounting Device in place of the phone positioner. The extension is fully compatible with the Twin SAM, ELI and other Flat Phantoms.



Data Evaluation:**• Power Reference measurement**

The robot measures the E field in a specified reference position that can be either the selected section's grid reference point or a user point in this section at 4mm of the inner surface of the phantom, 2mm for frequencies above 3GHz.

• Area Scan

Measurement procedures for evaluating SAR from wireless handsets typically start with a coarse measurement grid to determine the approximate location of the local peak SAR values. This is known as the area-scan procedure. The SAR distribution is scanned along the inside surface of one side of the phantom head, at least for an area larger than the projection of the handset and antenna. The distance between the measured points and phantom surface should be less than 8 mm, and should remain constant (with variation less than ± 1 mm) during the entire scan in order to determine the locations of the local peak SAR with sufficient accuracy. The angle between the probe axis and the surface normal line is recommended but not required to be less than 30° . If this angle is larger than 30° and the closest point on the probe-tip housing to the phantom surface is closer than a probe diameter, the boundary effect may become larger and polarization dependent. This additional uncertainty needs to be analyzed and accounted for. To achieve this, modified test procedures and additional uncertainty analyses not described in this recommended practice may be required. The measurement and interpolation point spacing should be chosen such as to allow identification of the local peak locations to within one-half of the linear dimension of a side of the zoom-scan volume. Because a local peak having specific amplitude and steep gradients may produce a lower peak spatial-average SAR compared to peaks with slightly lower amplitude and less steep gradients, it is necessary to evaluate these other peaks as well. However, since the spatial gradients of local SAR peaks are a function of the wavelength inside the tissue-equivalent liquid and the incident magnetic field strength, it is not necessary to evaluate local peaks that are less than 2 dB or more below the global maximum peak. Two-dimensional spline algorithms (Brishoual et al. 2001; Press et al., 1996) are typically used to determine the peaks and gradients within the scanned area. If a peak is found at a distance from the scan border of less than one-half the edge dimension of the desired 1 g or 10 g cube, the measurement area should be enlarged if possible.

• Zoom Scan

To evaluate the peak spatial-average SAR values for 1 g or 10 g cubes, fine resolution volume scans, called zoom scans, are performed at the peak SAR locations identified during the area scan. The minimum zoom scan volume size should extend at least 1.5 times the edge dimension of a 1 g cube in all directions from the center of the scan volume, for both 1 g and 10 g peak spatial-average SAR evaluations. Along the phantom curved surfaces, the front face of the volume facing the tissue/liquid interface conforms to the curved boundary, to ensure that all SAR peaks are captured. The back face should be equally distorted to maintain the correct averaging mass. The flatness and orientation of the four side faces are unchanged from that of a cube whose orientation is within $\pm 30^\circ$ of the line normal to the phantom at the center of the cube face next to the phantom surface. The peak local SAR locations that were determined in the area scan (interpolated values) should be used for the centers of the zoom scans. If a scan volume cannot be centered due to proximity of a phantom shape feature, the probe should be tilted to allow scan volume enlargement. If probe tilt is not feasible, the zoom-scan origin may be shifted, but not by more than half of the 1 g or 10 g cube edge dimension.

After the zoom-scan measurement, extrapolations from the closest measured points to the surface, for example along lines parallel to the zoom-scan centerline, and interpolations to a finer resolution between all measured and extrapolated points are performed. Extrapolation algorithm considerations are described in 6.5.3, and 3-D spline methods (Brishoual et al., 2001; Kreyszig, 1983; Press et al., 1996) can be used for interpolation. The peak spatial-average SAR is finally determined by a numerical averaging of the local SAR values in the interpolation grid, using for example a trapezoidal algorithm for the integration (averaging).

In some areas of the phantom, such as the jaw and upper head regions, the angle of the probe with respect to the line normal to the surface may be relatively large, e.g., greater than $\pm 30^\circ$, which could increase the boundary effect error to a larger level. In these cases, during the zoom scan a change in the orientation of the probe, the phantom, or both is recommended but not required for the duration of the zoom scan, so that the angle between the probe axis and the line normal to the surface is within 30° for all measurement points.

- **Power Drift measurement**

The robot re-measures the E-Field in the same reference location measured at the Power Reference. The drift measurement gives the field difference in dB from the first to the last reference reading. This allows a user to monitor the power drift of the device under test that must remain within a maximum variation of $\pm 5\%$.

- **Post-processing**

The procedure for spatial peak SAR evaluation has been implemented according to the IEEE1528 and IEC 62209-1/2 and IEC/IEEE 62209-1528:2020 standards. It can be conducted for 1g and 10g.

The software allows evaluations that combine measured data and robot positions, such as:

- ✓ Maximum search
- ✓ Extrapolation
- ✓ Boundary correction
- ✓ Peak search for averaged SAR

Interpolation between the measured points is performed when the resolution of the grid is not fine enough to compute the average SAR over a given mass.

Extrapolation routines are used to obtain SAR values between the lowest measurement points and the inner phantom surface. The extrapolation is determined by the surface detection distance and the probe sensor offset. Several measurements at different distances are necessary for the extrapolation.

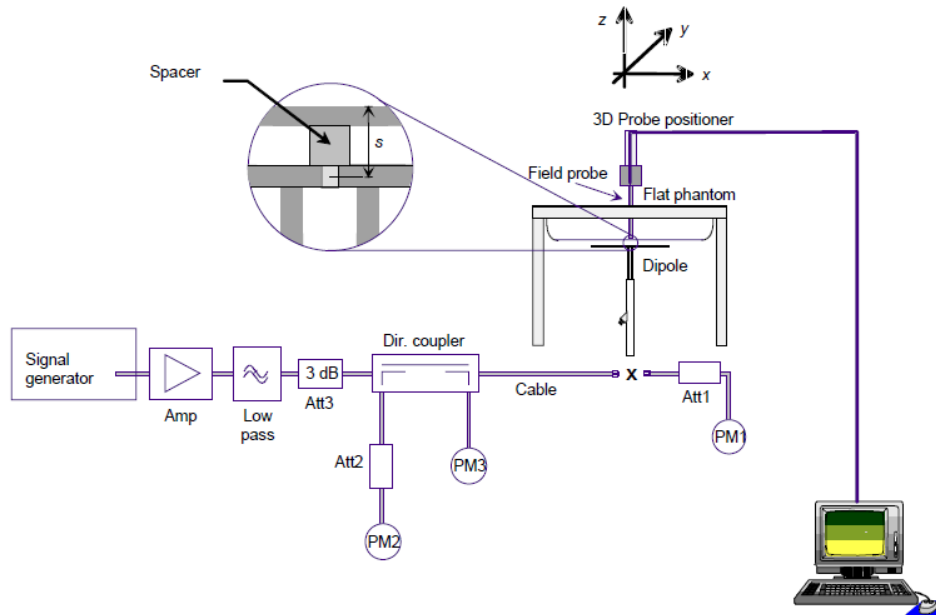
System and Liquid Check:

System Check

The system performance check verifies that the system operates within its specifications. System and operator errors can be detected and corrected. It is recommended that the system performance check be performed prior to any usage of the system in order to guarantee reproducible results.

The system performance check uses normal SAR measurements in a simplified setup with a well characterized source. This setup was selected to give a high sensitivity to all parameters that might fail or vary over time. The system check does not intend to replace the calibration of the components, but indicates situations where the system uncertainty is exceeded due to drift or failure.

In the simplified setup for system check, the EUT is replaced by a calibrated dipole and the power source is replaced by a controlled continuous wave generated by a signal generator. The calibrated dipole must be placed beneath the flat phantom section of the phantom at the correct distance.



The equipment setup is shown below:

- ✓ Signal Generator
- ✓ Amplifier
- ✓ Directional coupler
- ✓ Power meter
- ✓ Calibrated dipole

First, the power meter PM1 (including attenuator Att1) is connected to the cable to measure the forward power at the location of the connector (x) to the system check source. The signal generator is adjusted for the desired forward power at the connector as read by power meter PM1 after attenuation Att1 and also as coupled through Att2 to PM2. After connecting the cable to the source, the signal generator is readjusted for the same reading at power meter PM2.

SAR results are normalized to a forward power of 1W to compare the values with the calibration reports results as described at IEEE 1528, IEC 62209 and IEC/IEEE 62209-1528:2020 standards

Liquid Check

The dielectric parameters check is done prior to the use of the tissue simulating liquid. The verification is made by comparing the relative permittivity and conductivity to the values recommended by the applicable standards.

The liquid verification was performed using the following test setup:

- ✓ VNA (Vector Network Analyzer)
- ✓ Open-Short-Load calibration kit
- ✓ RF Cable
- ✓ Open-Ended Coaxial probe
- ✓ DAK software tool
- ✓ SAR Liquid
- ✓ De-ionized water
- ✓ Thermometer

These are the target dielectric properties of the tissue-equivalent liquid material as defined in FCC OET KDB 865664 D01.

Frequency (MHz)	Head SAR	
	ϵ_r (F/m)	σ (S/m)
150	52.30	0.76
300	45.30	0.87
450	43.50	0.87
835	41.55	0.91
900	41.50	0.97
915	41.50	0.98
1450	40.50	1.20
1610	40.30	1.29
1800-2000	40.00	1.40
2450	39.20	1.80
3000	38.50	2.40
5800	35.30	5.27
6000	35.07	5.48
6500	34.46	6.07
7000	33.88	6.65

(ϵ_r = relative permittivity, σ = conductivity and ρ = 1000 kg/m³)

The measurement system implement a SAR error compensation algorithm as documented in IEEE Std 1528-2013 and IEC/IEEE 62209-1528:2020 (equivalent to draft standard IEEE P1528-2011) to automatically compensate the measured SAR results for deviations between the measured and required tissue dielectric parameters (applied to only scale up the measured SAR, and not downward) so, according to FCC OET KDB 865664 D01, the tolerance for ϵ_r and σ may be relaxed to $\pm 10\%$.

11.2. Test Equipment List

SAR system #2

ID #	Device	Type/Model	Serial Number	Manufacturer	Cal. Date	Cal. Due Date
002-009	Dosimetric E-Field probe	EX3DV4	3978	SPEAG	2024-04-03	2025-04-03
003-016	Data Acquisition Electronics	DAEip	1705	SPEAG	2024-04-08	2025-04-08
094-010	Thermode probe temperature	RMS-TCD-S	24042501	Rotronic	2024-08-27	2026-08-27
002-000	6-Axis Robot	TX60 Lspeag	F16/55FXA1/A/01	STAÜBLI	NA	NA
002-001	Robot Controller	CS8C	F16/55FXA1/C/01	STAÜBLI	NA	NA
002-002	Measurement Server	DASY6	1489	SPEAG	NA	NA
002-003	Electro Optical Converter	EOC60	1098	SPEAG	NA	NA
002-004	Light Beam Unit	SE UKS 030 AA	N/A	Di-soric	NA	NA
002-005	Oval Flat Phantom	ELI V8.0	2048	SPEAG	NA	NA
002-006	Laptop Holder	-	N/A	SPEAG	NA	NA
002-007	Measurement Software	DASY6 16.2	9-5DEE27C2	SPEAG	NA	NA

Shared equipment

cc	Device	Type/Model	Serial Number	Manufacturer	Cal. Date	Cal. Due Date
123-000	USB Power Sensor	NRP-Z81	102278	R&S	2023-04-18	2025-04-18
124-000	USB Power Sensor	NRP-Z81	102279	R&S	2023-04-19	2025-04-19
069-000	Dielectric Probe Kit	DAK-3.5	1037	SPEAG	2023-07-04	2025-07-04
017-004	Coupler	UDC-0.5G-18G-10dB-SF	000813	Amd-group	2024-02-21	2025-02-21
079-001	RF Cable	CBL-0.5M-SMSM+	226527	Mini-Circuits	2024-02-16	2025-02-16
167-001	RF Cable	CBL-2M-SMSM+	233846	Mini-Circuits	2024-02-16	2025-02-16
089 - 000	Vector Reflectometer	PLANAR R140	0190616	Copper Mountain Technologies	2023-09-26	2025-09-26
339-000	VNA Analyzer	ZNB 40	101740	R&S	2023-05-19	2025-05-19
094-005	Thermo-Hygrometer Probe (B8)	RMS-HCD-S	24050484	Rotronic	2024-09-02	2026-09-02
095-000	Thermometer	TESTO 925	34822881	Testo	2025-04-17	2025-04-17
129-000	Signal Generator	SMB100A	178212	R&S	2024-01-31	2026-01-31
198-000	0.8-21GHz RF amplifier	TVA-82-213A+	2004003	Mini-Circuits	2024-02-16	2025-02-16
070-000	2450GHz System Validation Dipole	D2450GHzV2	937	SPEAG	2022-05-19	2025-05-19
068-000	5GHz System Validation Dipole	D5GHzv2	1164	SPEAG	2024-10-03	2025-10-03
097-000	System Validation Dipole 7000MHz	D7GHzV2	1008	SPEAG	2022-08-24	2025-08-24
384-000	0.1-6GHz RF amplifier	AMT-A0328	1818	Agile Microwave Technology	2024-02-19	2025-02-19
458-000	Measurement Software	SARA V2.3	NA	Intel	NA	NA
099-000	Liquid measurement SW	DAK-3.5 V 3.0.2.3	9-2687B491	SPEAG	NA	NA

11.3. Tissue Simulant Liquid

TSL	Manufacturer / Model	Freq Range (MHz)	Main Ingredients
Head WideBand	SPEAG HBBL600-10000V6 Batch 210331-1	600-10000	Ethanediol, Sodium petroleum sulfonate, Hexylene Glycol / 2-Methyl-pentane-2.4-diol, Alkoxyated alcohol

11.4. Measurement Uncertainty Evaluation

The system uncertainty evaluation is shown in the table below with a coverage factor of $k = 2$ to indicate a 95% level of confidence:

SPEAG DASY6 Uncertainty Budget								
According to IEC/IEEE 62209-1528 (4 MHz - 6 GHz)								
including IEEE 1528-2013 and IEC 62209-1/2016, IEC 62209-2/2010								
Symbol	Error Description	Uncert. Value	Prob. Dist.	Div.	(ci) 1g	(ci) 10g	Std Unc. (1g)	Std Unc. (10g)
Measurement System Errors								
CF	<i>Probe Calibration</i>	±14.0 %	N	2	1	1	±7.0 %	±7.0 %
CF _{drift}	Probe Calibration Drift	±1.0 %	N	1	1	1	±1.0 %	±1.0 %
LIN	Probe Linearity	±4.7 %	R	√3	1	1	±2.7 %	±2.7 %
BBS	Broadband Signal	±3.0 %	N	2	1	1	±1.5 %	±1.5 %
ISO	<i>Axial Isotropy</i>	±4.7 %	R	√3	0.5	0.5	±1.4 %	±1.4 %
ISO	Hemispherical Isotropy	±9.6 %	R	√3	0.5	0.5	±2.8 %	±2.8 %
DAE	Data Acquisition	±0.3 %	N	1	1	1	±0.3 %	±0.3 %
AMB	RF Ambient	±1.8 %	N	1	1	1	±1.8 %	±1.8 %
Δ _{sys}	Probe Positioning	±0.2 %	N	1	0.33	0.33	±0.1 %	±0.1 %
DAT	Data Processing	±2.3 %	N	1	1	1	±2.3 %	±2.3 %
Phantom and Device Errors								
LIQ(σ)	Conductivity (meas.) _{DAK}	±2.5 %	N	1	0.78	0.71	±2.0 %	±1.8 %
LIQ(Tσ)	Conductivity (temp.) _{BB}	±3.4 %	R	√3	0.78	0.71	±1.5 %	±1.4 %
EPS	Phantom Permittivity	±14.0 %	R	√3	0.25	0.25	±2.0 %	±2.0 %
DAS	Distance DUT - TSL	±2.0 %	N	1	2	2	±4.0 %	±4.0 %
H	Device Holder	±3.6 %	N	1	1	1	±3.6 %	±3.6 %
MOD	DUT Modulation _m	±2.4 %	R	√3	1	1	±1.4 %	±1.4 %
TAS	Time-average SAR	±2.6 %	R	√3	1	1	±1.5 %	±1.5 %
RF _{drift}	DUT drift	±5.0 %	N	1	1	1	±2.9 %	±2.9 %
Correction to the SAR results								
C(ε, σ)	Deviation to Target	±1.9 %	N	1	1	0.84	±1.9 %	±1.6 %
Combined Std. Uncertainty							±11.5 %	±11.4 %
Expanded STD Uncertainty							±23.1 %	±22.9 %

11.5. RF Exposure Limits

SAR assessments have been made in line with the requirements of FCC 47CFR Part 2.1093 on the limitation of exposure of the general population / uncontrolled exposure for portable devices.

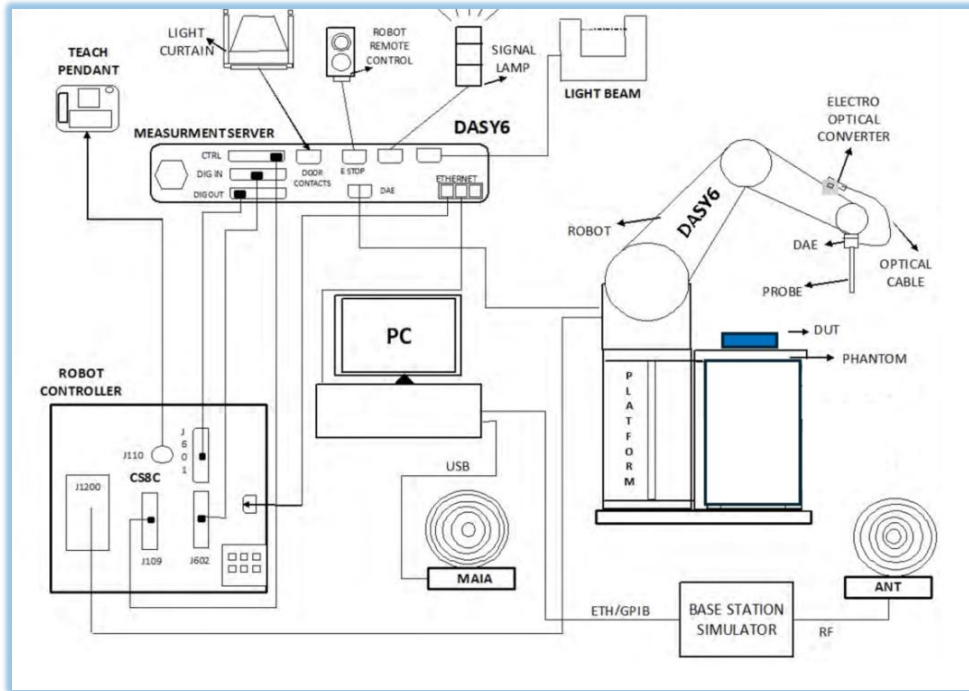
Exposure Type	General Population / Uncontrolled Environment
Peak spatial-average SAR (averaged over any 1 gram of tissue)	1.6 W/kg
Whole body average SAR	0.08 W/kg
Peak spatial-average SAR (extremities) (averaged over any 10 grams of tissue)	4.0 W/kg

12. PD Test & System Description

12.1. SPEAG free space Measurement System

Measurement Setup:

The DASY6/8 system for performing compliance tests consists of the following items:



- ✓ A standard high precision 6-axis robot (Stäubli TX/RX family) with controller, teach pendant and software. It includes an arm extension for accommodating the data acquisition electronics (DAE)
- ✓ An mm-wave E-field probe optimized and calibrated for the targeted measurements.
- ✓ A data acquisition electronics (DAE) which performs the signal amplification, signal multiplexing, AD-conversion, offset measurements, mechanical surface detection, collision detection, etc. The signal is optically transmitted to the EOC.
- ✓ The Electro-optical Converter (EOC) performs the conversion from optical to electrical signals for the digital communication to the DAE. The EOC signal is transmitted to the measurement server.
- ✓ The function of the measurement server is to perform the time critical tasks such as signal filtering, control of the robot operation and fast movements interrupts.
- ✓ The Light Beam used is for probe alignment. This improves the (absolute) accuracy of the probe positioning.
- ✓ A computer running Windows professional operating system and the cDASY6/8 software.
- ✓ Remote control and teach pendant as well as additional circuitry for robot safety such as warning lamps, etc.

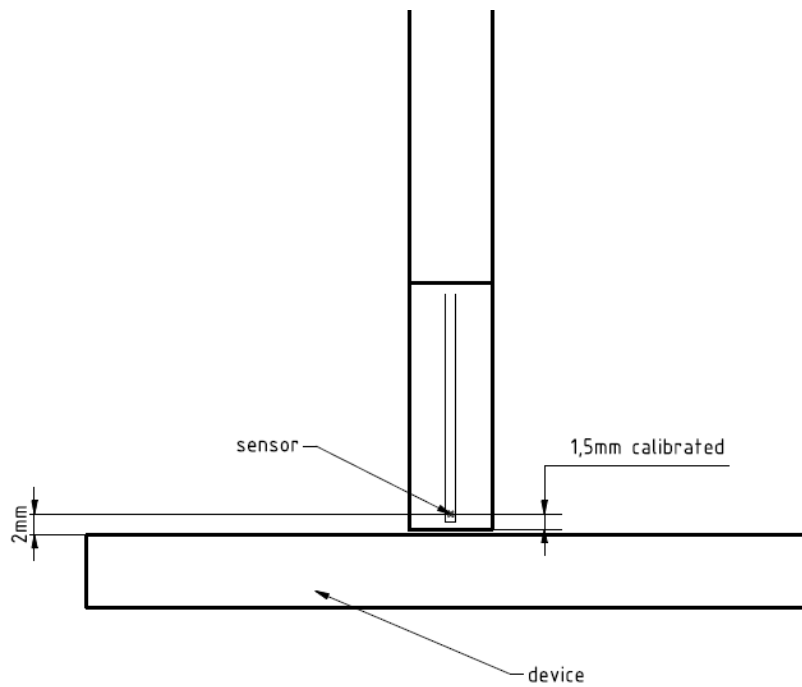
E-Field Measurement Probe:

The probe consists of two dipoles (0.8 mm length) optimally arranged with different angles (γ_1 and γ_2) to obtain pseudo-vector information, printed on glass substrate protected by high density foam that allows low perturbation of the measured field.

Three or more measurements are taken for different probe rotational angles, deriving the amplitude and polarization information.

The probe's characteristics are:

Frequency Range	750 MHz – 110 GHz
Length	320 mm
Probe tip external diameter	8 mm
Probe's two dipoles length	0.9mm – Diode loaded
Probe's substrate	Quartz 0.9 x 20 x 0.18mm ($\epsilon_r=3.8$)
Distance between diode sensors and probe's tip	1.5 mm
Axial Isotropy	± 0.6 dB
Maximum operating E-field	3000 V/m
Lower E-field detection threshold	5 V/m @ 60 GHz
Minimum Mechanical separation between probe tip and a Surface	0.5mm
Calibration reference point	Diode Sensor



Worst Case Linearization Error:

For continuously transmitting signals (100% duty cycle), the worst case linearization error is given by the difference between non linearized voltage and linearized voltage using CW parameters. The error is increasing with the voltage levels. In our particular case, the measured voltages averaged over the signal period are below 1mV. We use 1mV in the below calculation to have the worst case condition. The signal PAR (Peak to Average Ratio) is 6dB and the diode compression point 100mV.

The maximum voltage through the diode is given by:

$$v_{peak} = v_{meas\ avg} \times PAR_{linear}$$

$$v_{peak} = 1 * 4 = 4\ mV$$

The linearized voltage using CW parameter is given by:

$$v_{lin\ peak} = v_{peak} + \frac{v_{peak}^2}{diode\ compression\ point}$$

$$v_{lin\ peak} = 4 + \frac{4^2}{100} = 4.16\ mV$$

The worst case linearization error is:

$$lin\ error = \frac{v_{lin\ peak} - v_{peak}}{v_{peak}} = \frac{4.16 - 4}{4} = 1.04 = 4\%$$

Data Evaluation:**Scan**

The scan involves the measurement of two planes with three different probe rotations. The grid steps are optimized by the software based on the test frequency. The location of the lowest measurement plane is defined by the distance of first measurement layer from device under test (DUT) entered by the user. The DUT location settings can be used to offset the center of the grid.

Total Field and Power Flux Density Reconstruction:

Computation of the power density in general requires knowledge of the electric (E-) and magnetic (H-) field amplitudes and phases in the plane of incidence. Reconstruction of these quantities from pseudo-vector E-field measurements is feasible, as they are constrained by Maxwell's equations.

The reconstruction algorithm developed by the system manufacturer, together with the ability of the probe to measure extremely close to the source without perturbing the field, permits reconstruction of the E- and H-fields, as well as of the power density, on measurement planes located as near as 0.5mm away in the frequency band of 60 GHz.

The average of the reconstructed power density is evaluated over a circular area in each measurement plane. The area of the circle is defined by the user; the default is 1 cm².

System Check

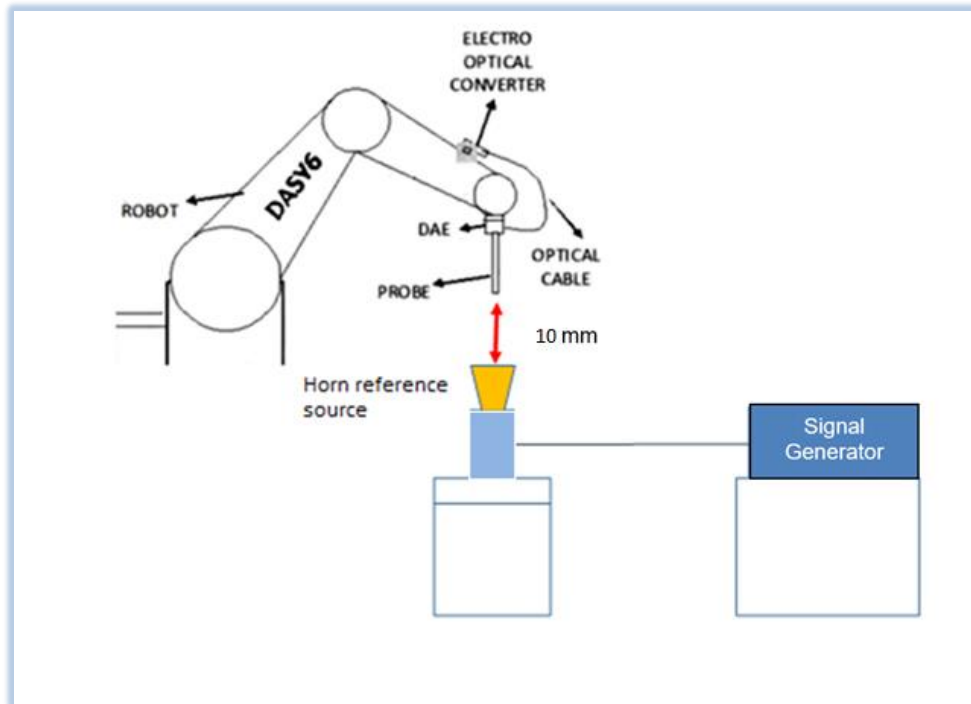
The system performance check verifies that the system operates within its specifications. It is recommended that the system performance check be performed prior to any usage of the system in order to guarantee reproducible results.

The system performance check uses normal E-field measurements in a simplified setup with a well characterized source. This setup was selected to give a high sensitivity to all parameters that might fail or vary over time. The system check does not intend to replace the calibration of the components, but indicates situations where the system uncertainty is exceeded due to drift or failure.

In the simplified setup for system check, the EUT is replaced by a calibrated source and the power source is replaced by a controlled continuous wave generated by a signal generator. The calibrated source must be placed at the correct distance from the E-field probe according to the calibration certificate.



First, the power meter is connected to the output of the signal generator to measure the forward power at the location of the connector to the system check source. The signal generator is adjusted for the desired forward power to match the system check source calibration setup at the connector as read by power meter. Then the power meter is replaced by the system check source.



The output power on the reference source is set to 10.0 dBm (10 mW) and the measurement results E, H and Avg PD are compared with the Numerical modeling.

12.2. Test Equipment List

SAR system #4

ID #	Device	Type/Model	Serial Number	Manufacturer	Cal. Date	Cal. Due Date
443-000	E-Field probe	EUmmWV3	9538	SPEAG	2024-05-06	2025-05-06
001-017	Data Acquisition Electronics	DAEip	1703	SPEAG	2024-02-13	2025-02-13
004-000	6-axis Robot	TX90 XL	F11/5JL2A1/A/01	STAÜBLI	n/a	n/a
004-001	Robot Controller	CS8C	F11/5JL2A1/C/01	STAÜBLI	n/a	n/a
004-005	Measurement Server	DASY6 P/N: SE UMS 028 BB	-	SPEAG	n/a	n/a
004-004	Light Beam Unit	SE UKS 030 AA	1030	Di-soric	n/a	n/a
003-002	5G Phantom	mmWave	NA	SPEAG	n/a	n/a
003-006	Measurement Software	DASYmmW v2.4	9-5ED1AC01	SPEAG	n/a	n/a
004-010	Laptop Holder	P/N SM LH1 001 CD	-	SPEAG	n/a	n/a

Shared equipment

ID #	Device	Type/Model	Serial Number	Manufacturer	Cal. Date	Cal. Due Date
123-000	USB Power Sensor	NRP-Z81	102278	R&S	2023-09-08	2025-04-18
124-000	USB Power Sensor	NRP-Z81	102279	R&S	2023-09-08	2025-04-18
017-004	Coupler	UDC-0.5G-18G-10dB-SF	000813	Amd-group	2024-02-21	2025-02-21
079-001	RF Cable	CBL-0.5M-SMSM+	226527	Mini-Circuits	2024-02-16	2025-04-16
167-001	RF Cable	CBL-2M-SMSM+	233846	Mini-Circuits	2024-02-16	2025-04-16
094-003	Thermo-Hygrometer Probe (B8)	RMS-HCD-S	24050484	Rotronic	2024-09-02	2026-09-02
129-000	Signal Generator	SMB100A	178212	R&S	2022-12-19	2024-12-19
198-000	0.8-21GHz RF amplifier	TVA-82-213A+	2004003	Mini-Circuits	2024-02-16	2025-04-16
008-081	Horn reference antenna	PE9859/SF-15	-	PAsternack	NA	NA
458-000	Measurement Software	SARA V2.3	NA	Intel	NA	NA

12.3. Measurement Uncertainty Evaluation

The system uncertainty evaluation is shown in the table below with a coverage factor of $k = 2$ to indicate a 95% level of confidence:

Table 2: DASY6 Uncertainty Budget in Compliance with IEC/IEEE 63195-1 for the cases indicated in the REFERENCE TABLE						
Error Description	Uncertainty Value (±dB)	Probability Distribution	Div.	(c _i)	Std. Unc. (±dB)	(v _i) V _{eff}
Measurement System						
Probe calibration	0.49	N	1	1	0.49	∞
Hemispherical Isotropy	0.50	R	√3	1	0.29	∞
Linearity	0.20	R	√3	1	0.12	∞
System Detection Limits	0.04	R	√3	1	0.02	∞
Data acquisition	0.03	N	1	1	0.03	∞
Field reconstruction ¹	2	R	√3	1	1.15	∞
Probe Positioning Repeatability	0.04	R	√3	1	0.02	∞
Probe Positioning offset	0.30	R	√3	1	0.17	∞
Amplitude and Phase Noise	0.04	R	√3	1	0.02	∞
Spatial Averaging	0.1	R	√3	1	0.06	∞
Frequency Response	0.2	R	√3	1	0.12	∞
Test Sample Related						
Power Drift	0.21	R	√3	1	0.12	∞
Modulation response	0.40	R	√3	1	0.23	∞
Device holder influence	0.1	R	√3	1	0.06	∞
RF Ambient Noise	0.04	R	√3	1	0.02	∞
RF Ambient Reflections	0.04	R	√3	1	0.02	∞
Combined Std. Uncertaintyv					1.34 dB	∞
Expanded Std. Uncertainty 95%					2.68 dB	

The REC at distance d must be modified as follows:

$$unc_{RECdB} = \begin{cases} 2.35 - 8.75d/\lambda & \text{for } d = 0.04 \dots 0.2\lambda \\ 0.6 & \text{for } d \geq 0.2\lambda \end{cases}$$

¹ The minimal distance is 2mm, and the minimal frequency tested is 6 GHz. This corresponds to an MU value of $(2.35-8.75*0.04 = 2 \text{ dB})$ --
 Ref: Speag, DASY6 Module mmWave Manual, February 2022.

12.4. RF Exposure Limits

Power density assessments have been made in line with the requirements of FCC 47CFR Part 2.1093, in particular chapter 1.1310 specifying the MPE limits, on the limitation of exposure of the general population / uncontrolled exposure for portable devices.

Exposure Type	Power density (S)
Limits for Occupational/Controlled Exposure. 1.5GHz – 100GHz	50.0 W/m²
Limits for General Population/ Uncontrolled Exposure. 1.5GHz – 100GHz	10.0 W/m²

Annex A. Test Results

The herein test results were performed by:

Test case measurement	Test Personnel
Conducted measurement	F. Heurtematte
SAR/PD measurement	Y HADDAD

A.1 Test Conditions

A.1.1 Test SAR Test positions relative to the phantom

The device under test was an Intel® card inside a Notebook host platform (Yoga Slim 9 14ILL10) using a set of PIFA antennas. The card was operated utilizing proprietary software (DRTU version DRTU.06643.23.60.0) and each channel was measured using a broadband power meter to determine the maximum average power.

According to FCC OET KDB 616217 D04, laptop position should be tested for SAR compliance with the display screen opened at an angle of 90° to the keyboard compartment and the notebook bottom surface must be touching the phantom.

Antenna	Main	Aux
Position	• Laptop	• Laptop

See A.1.3.1 for a more detailed list of the applied reductions.

See E.2 Test positions section for more information on the tested positions.

A.1.2 Test signal, Output power and Test Frequencies

For 802.11 transmission modes the device was put into operation by using an own control software to program the test mode required to select the continuous transmission with 100% duty cycle.

The output power of the device was set to transmit at maximum power for all tests.

A.1.3 Evaluation Exclusion and Test Reductions

A.1.3.1 SAR evaluation exclusion

The SAR Test Exclusion Threshold in FCC OET KDB 447498 can be applied to determine SAR test exclusion for adjacent edge configurations. For 100MHz to 6GHz and test separation distances ≤ 50 mm, the 1-g and 10-g SAR test exclusion thresholds are determined by the following formula:

$$\left[\frac{\text{(max. power of channel, including tune – up tolerance, mW)}}{\text{(min. test separation distance, mm)}} \right] \cdot \left[\sqrt{f_{(\text{GHz})}} \right] \quad (1)$$

≤ 3.0 for 1g SAR, and ≤ 7.5 for 10g extremity SAR

Where:

- f(GHz) is the RF channel transmit frequency in GHz
- Power and distance are rounded to the nearest mW and mm before calculation
- The result is rounded to one decimal place for comparison
- The values 3.0 and 7.5 are referred to as numeric thresholds

The test exclusions are applicable only when the minimum test separation distance is ≤ 50 mm, and for transmission frequencies between 100 MHz and 6 GHz. When the minimum test separation distance is < 5 mm, a distance of 5 mm is applied to determine SAR test exclusion.

For test separation distances > 50 mm, the 1-g and 10-g SAR test exclusion thresholds are determined using the following formulas:

$$\left(\left(\text{Power allowed at numeric threshold for 50 mm in (1)} \right) + \left(\text{test separation distance} - 50 \text{ mm} \right) \cdot \left(f_{\text{MHz}} / 150 \right) \right) \text{mW}, \quad (2)$$

for 100MHz to 1500MHz

$$\left(\left(\text{Power allowed at numeric threshold for 50 mm in (1)} \right) + \left(\text{test separation distance} - 50 \text{ mm} \right) \cdot 10 \right) \text{mW}, \quad (3)$$

for 1500MHz and ≤ 6 GHz

WLAN Antenna	Band Name	Output power Notebook config		Laptop	Laptop
		dBm	mW		
Main	DTS	15.50	35.48	>50	T
	U-NII-1	12.00	15.85	>50	R
	U-NII-2A	12.00	15.85	>50	T
	UNII-2C	12.50	17.78	>50	T
	U-NII-3	12.50	17.78	>50	T
	U-NII-4	12.50	17.78	>50	T
	U-NII-5	11.50	14.13	>50	T
	U-NII-6	11.50	14.13	>50	T
	U-NII-7	11.50	14.13	>50	T
	U-NII-8	11.50	14.13	>50	T
Aux	DTS	15.50	35.48	>50	T
	U-NII-1	12.00	15.85	>50	T
	U-NII-2A	12.00	15.85	>50	R
	UNII-2C	12.50	17.78	>50	T
	U-NII-3	12.50	17.78	>50	T
	U-NII-4	11.50	17.78	>50	T
	U-NII-5	11.50	14.13	>50	T
	U-NII-6	11.50	14.13	>50	T
	U-NII-7	11.50	14.13	>50	T
	U-NII-8	11.50	14.13	>50	T
	BT	14.50	28.18	>50	T

T: Tested position
R: Reduced

See Annex E for a more detailed explanation of the separation distance related to the platform.

General SAR test reduction

According to FCC OET KDB 447498, testing of other required channels within the operating mode of a frequency band is not required when the reported 1-g or 10-g SAR for the mid-band or highest output power channel is:

- ≤ 0.8 W/kg or 2.0 W/kg, for 1-g or 10-g respectively, when the transmission band is ≤ 100 MHz
- ≤ 0.6 W/kg or 1.5 W/kg, for 1-g or 10-g respectively, when the transmission band is between 100 MHz and 200 MHz
- ≤ 0.4 W/kg or 1.0 W/kg, for 1-g or 10-g respectively, when the transmission band is ≥ 200 MHz

WLAN SAR Test reduction

Transmission Mode	SAR test exclusion/reduction
DSSS	<p>According to FCC OET KDB 248227 D01, SAR is measured for 2.4 GHz 802.11b, SAR test reduction is determined according to the following:</p> <ul style="list-style-type: none"> ▪ When the reported SAR of the highest measured maximum output power channel for the exposure configuration is ≤ 0.8 W/kg, no further SAR testing is required for 802.11b DSSS in that exposure configuration. ▪ When the reported SAR is > 0.8 W/kg, SAR is required for that exposure configuration using the next highest measured output power channel. When any reported SAR is > 1.2 W/kg, SAR is required for the third channel. <p>According to FCC OET KDB 248227 D01, SAR is not required for 2.4 GHz OFDM conditions when the highest reported SAR for DSSS is adjusted by the ratio of OFDM to DSSS specified maximum output power and the adjusted SAR is ≤ 1.2 W/kg.</p>
OFDM	<p>According to FCC OET KDB 248227 D01, 802.11a/g/n/ac modes have the same specified maximum output power, largest channel bandwidth, lowest order modulation and lowest data rate, the lowest order 802.11 mode is selected; i.e., 802.11a is chosen over 802.11n then 802.11ac or 802.11g is chosen over 802.11n.</p> <p>According to FCC OET KDB 248227 D01, an <u>initial test configuration</u> is determined for OFDM and DSSS transmission modes according to the channel bandwidth, modulation and data rate combination(s) with the highest maximum output power specified for production units in each standalone and aggregated frequency band. SAR is measured using the highest measured maximum output power channel. SAR test reduction for subsequent highest output test channels is determined according to reported SAR of the initial test configuration.</p> <p>The <u>initial test configuration</u> for 5 GHz OFDM transmission modes is determined by the 802.11 configuration with the highest maximum output power specified for production units, including tune-up tolerance, in each standalone and aggregated frequency band. SAR for the initial test configuration is measured using the highest maximum output power channel determined by the default power measurement procedures.</p> <p>According to FCC OET KDB 248227 D01, when the reported SAR of the initial test configuration is > 0.8 W/kg, SAR measurement is required for subsequent next highest measured output power channel(s) in the initial test configuration until reported SAR is ≤ 1.2 W/kg or all required channels are tested.</p>

A.2 Conducted Power Measurements

A.2.1 WLAN 2.4GHz

Band	Mode	Data Rate	Ch #	Freq (MHz)	Main			Aux			
					Speed	Amphenol	Tune-up Pwr (dBm)	Speed	Amphenol	Tune-up Pwr (dBm)	
2.4GHz (DTS)	802.11b	1Mbps	1	2412	15.43	15.50	15.50	14.72	15.45	15.50	
			6	2437	15.22	14.98	15.50	15.45	15.30	15.50	
			11	2462	15.31	15.39	15.50	15.50	15.50	15.50	
	802.11g	6Mbps	1	2412	NR1,2		15.50	NR1,2		15.50	
			6	2437							15.50
			11	2462							15.50
	802.11n20	HT0	1	2412							15.50
			6	2437							15.50
			11	2462							15.50
	802.11ax20 /be20	MCS0	1	2412							15.50
			6	2437							15.50
			11	2462							15.50
	802.11n40	HT0	3	2422							15.50
			6	2437							15.50
			9	2452							15.50
	802.11ax40 /be40	MCS0	3	2422							15.50
			6	2437							15.50
			9	2452							15.50

Initial test configuration

1. NR: Not Required
2. As per FCC OET KDB 248227 D01, conducted output power and SAR testing are not required for 802.11g/n/ax channels when the highest reported SAR for DSSS is adjusted by the ratio of OFDM to DSSS specified maximum output power and the adjusted SAR is ≤ 1.2 W/kg.
3. When the reported SAR of the initial test configuration is > 0.8 W/kg, SAR measurement is required for subsequent next highest measured output power channel(s) in the initial test configuration until reported SAR is ≤ 1.2 W/kg or all required channels are tested.

A.2.1.1 Bluetooth

						Average Power (dBm)		
Band	Mode	Data Rate	Channel	Frequency (MHz)	Antenna	Speed	Amphenol	Tune-up Pwr (dBm)
2.4 GHz (BT)	Bluetooth	Basic rate GFSK	0	2402	Aux	14.27	14.46	14.50
			39	2441	Aux	14.36	14.42	14.50
			78	2480	Aux	14.35	14.42	14.50
		Basic rate $\pi/4$ DQPSK	0	2402	Aux	NR ¹		14.50
			39	2441	Aux	NR ¹		14.50
			78	2480	Aux	NR ¹		14.50
		Basic rate 8-DPSK	0	2402	Aux	NR ¹		14.50
			39	2441	Aux	NR ¹		14.50
			78	2480	Aux	NR ¹		14.50
	BLE	Low energy GFSK	0	2402	Aux	NR ¹		14.50
			39	2441	Aux	NR ¹		14.50
			78	2480	Aux	NR ¹		14.50

Initial test configuration

1. NR: Not Required

A.2.2 WLAN 5GHz (U-NII)

A.2.2.1 5.2GHz and 5.3GHz (U-NII-1 and U-NII-2A)

					Average Power (dBm) - Main		Average Power (dBm) - Aux	
Band	Mode	Data Rate	Ch#	Freq (MHz)	Avg Pwr (dBm)	Tune-up Pwr (dBm)	Avg Pwr (dBm)	Tune-up Pwr (dBm)
U-NII-1	802.11a20	6	36	5180	NR	12.00	NR	12.00
			40	5200	NR	12.00	NR	12.00
			44	5220	NR	12.00	NR	12.00
			48	5240	NR	12.00	NR	12.00
	802.11n20	HT0	36	5180	NR	12.00	NR	12.00
			40	5200	NR	12.00	NR	12.00
			44	5220	NR	12.00	NR	12.00
			48	5240	NR	12.00	NR	12.00
	802.11ax20/be20	MCS0	36	5180	NR	12.00	NR	12.00
			40	5200	NR	12.00	NR	12.00
			44	5220	NR	12.00	NR	12.00
			48	5240	NR	12.00	NR	12.00
	802.11n40	HT0	38	5190	NR	12.00	NR	12.00
			46	5230	NR	12.00	NR	12.00
	802.11ax40/be40	MCS0	38	5190	NR	12.00	NR	12.00
			46	5230	NR	12.00	NR	12.00
802.11ac80	VHT0	42	5210	NR	12.00	NR	12.00	
802.11ax80/be80	MCS0	42	5210	NR	12.00	NR	12.00	

Initial test configuration

- NR: Not Required
- When the same maximum output power is specified for both bands, begin SAR measurement in U-NII-2A band by applying the OFDM SAR requirements. If the highest reported SAR for a test configuration is ≤ 1.2 W/kg, SAR is not required for U-NII-1 band (see §0 in this document).
- Additional conducted power measurement is required when reported SAR is > 1.2 W/kg. In case the subsequent test configuration and the channel bandwidth is smaller than the initial test configuration, all channels that overlap with the larger channel bandwidth in the initial configuration should be tested.
- The initial test configuration for 2.4 GHz and 5 GHz OFDM transmission modes is determined by the 802.11 configuration with the highest maximum output power specified for production units, including tune-up tolerance, in each standalone and aggregated frequency band. SAR for the initial test configuration is measured using the highest maximum output power channel determined by the default power measurement procedures. When multiple transmission modes (802.11a/g/n/ac) have the same specified maximum output power, largest channel bandwidth, lowest order modulation and lowest data rate, lowest order 802.11 mode is selected (i.e. a, g, n, ac then ax)
- When the reported SAR of the initial test configuration is > 0.8 W/kg, SAR measurement is required for the subsequent next highest measured output power channel(s) in the initial test configuration until reported SAR is $=1.2$ W/kg or all required channels are tested.
- When the highest reported SAR for the initial test configuration (when applicable, include subsequent highest output channels), according to the initial test position or fixed exposure requirements, is adjusted by the ratio of the subsequent test configuration to the initial test configuration specified maximum output power and the adjusted SAR is ≤ 1.2 W/kg, SAR is not required for that subsequent test configuration
- SAR for subsequent highest measured maximum output power channels in the subsequent test configuration is required only when the reported SAR of the preceding higher maximum output power channel(s) in the subsequent test configuration is >1.2 W/kg or until all required channels are tested.

					Average Power (dBm) - Main			Average Power (dBm) - Aux		
Band	Mode	Data Rate	Ch#	Freq (MHz)	Speed	Amphenol	Tune-up Pwr (dBm)	Speed	Amphenol	Tune-up Pwr (dBm)
UNII-2A	802.11a20	6	52	5260	NR		12.00	NR		12.00
			56	5280	NR		12.00	NR		12.00
			60	5300	NR		12.00	NR		12.00
			64	5320	NR		12.00	NR		12.00
	802.11n20	HT0	52	5260	NR		12.00	NR		12.00
			56	5280	NR		12.00	NR		12.00
			60	5300	NR		12.00	NR		12.00
			64	5320	NR		12.00	NR		12.00
	802.11ax20/be20	MCS0	52	5260	NR		12.00	NR		12.00
			56	5280	NR		12.00	NR		12.00
			60	5300	NR		12.00	NR		12.00
			64	5320	NR		12.00	NR		12.00
	802.11n40	HT0	54	5270	NR		12.00	NR		12.00
			62	5310	NR		12.00	NR		12.00
	802.11ax40/be40	MCS0	54	5270	NR		12.00	NR		12.00
			62	5310	NR		12.00	NR		12.00
802.11ac80	VHT0	58	5290	NR		12.00	NR		12.00	
802.11ax80/be80	MCS0	58	5290	NR		12.00	NR		12.00	
802.11ac160	VHT0	50	5250	11.33	11.36	12.00	11.19	11.48	12.00	
802.11ax160/be160	MCS0	50	5250	NR		12.00	NR		12.00	

Initial test configuration

A.2.2.2 5.6 (U-NII-2C)

					Average Power (dBm) - Main			Average Power (dBm) - Aux		
Band	Mode	Data Rate	Ch#	Freq (MHz)	Speed	Amphenol	Tune-up Pwr (dBm)	Speed	Amphenol	Tune-up Pwr (dBm)
UNII-2C	802.11a20	6	100	5500	NR		12.50	NR		12.50
			104	5520	NR		12.50	NR		12.50
			108	5540	NR		12.50	NR		12.50
			112	5560	NR		12.50	NR		12.50
			116	5580	NR		12.50	NR		12.50
			120	5600	NR		12.50	NR		12.50
			124	5620	NR		12.50	NR		12.50
			128	5640	NR		12.50	NR		12.50
	802.11n20	HT0	100	5500	NR		12.50	NR		12.50
			104	5520	NR		12.50	NR		12.50
			108	5540	NR		12.50	NR		12.50
			112	5560	NR		12.50	NR		12.50
			116	5580	NR		12.50	NR		12.50
			120	5600	NR		12.50	NR		12.50
			124	5620	NR		12.50	NR		12.50
			128	5640	NR		12.50	NR		12.50
	802.11ax20/be20	MCS0	100	5500	NR		12.50	NR		12.50
			104	5520	NR		12.50	NR		12.50
			108	5540	NR		12.50	NR		12.50
			112	5560	NR		12.50	NR		12.50
			116	5580	NR		12.50	NR		12.50
			120	5600	NR		12.50	NR		12.50
			124	5620	NR		12.50	NR		12.50
			128	5640	NR		12.50	NR		12.50
	802.11n40	HT0	102	5510	NR		12.50	NR		12.50
			110	5550	NR		12.50	NR		12.50
			118	5590	NR		12.50	NR		12.50
			126	5630	NR		12.50	NR		12.50
	802.11ax40/be40	MCS0	102	5510	NR		12.50	NR		12.50
			110	5550	NR		12.50	NR		12.50
			118	5590	NR		12.50	NR		12.50
			126	5630	NR		12.50	NR		12.50
	802.11ac80	VHT0	106	5530	NR		12.50	NR		12.50
			122	5610	NR		12.50	NR		12.50
	802.11ax80/be80	MCS0	106	5530	NR		12.50	NR		12.50
			122	5610	NR		12.50	NR		12.50
802.11ac160	VHT0	114	5570	11.64	11.88	12.50	12.03	11.96	12.50	



	802.11ax160/be160	MCS0	114	5570	NR	12.50	NR	12.50
--	-------------------	------	-----	------	----	-------	----	-------

Initial test configuration

A.2.2.3 5.8GHz (U-NII-3)

					Average Power (dBm) - Main			Average Power (dBm) - Aux			
Band	Mode	Data Rate	Ch#	Freq (MHz)	Speed	Amphenol	Tune-up Pwr (dBm)	Speed	Amphenol	Tune-up Pwr (dBm)	
UNII-3	802.11a20	6	132	5660		NR	12.50		NR	12.50	
			136	5680		NR	12.50		NR	12.50	
			140	5700		NR	12.50		NR	12.50	
			144	5720		NR	12.50		NR	12.50	
			149	5745		NR	12.50		NR	12.50	
			153	5765		NR	12.50		NR	12.50	
			157	5785		NR	12.50		NR	12.50	
			161	5805		NR	12.50		NR	12.50	
			165	5825		NR	12.50		NR	12.50	
	802.11n20	HT0	132	5660		NR	12.50		NR	12.50	
			136	5680		NR	12.50		NR	12.50	
			140	5700		NR	12.50		NR	12.50	
			144	5720		NR	12.50		NR	12.50	
			149	5745		NR	12.50		NR	12.50	
			153	5765		NR	12.50		NR	12.50	
			157	5785		NR	12.50		NR	12.50	
			161	5805		NR	12.50		NR	12.50	
			165	5825		NR	12.50		NR	12.50	
	802.11ax20/be20	MCS0	132	5660		NR	12.50		NR	12.50	
			136	5680		NR	12.50		NR	12.50	
			140	5700		NR	12.50		NR	12.50	
			144	5720		NR	12.50		NR	12.50	
			149	5745		NR	12.50		NR	12.50	
			153	5765		NR	12.50		NR	12.50	
			157	5785		NR	12.50		NR	12.50	
			161	5805		NR	12.50		NR	12.50	
			165	5825		NR	12.50		NR	12.50	
	802.11n40	HT0	134	5670		NR	12.50		NR	12.50	
			142	5710		NR	12.50		NR	12.50	
			151	5755		NR	12.50		NR	12.50	
			159	5795		NR	12.50		NR	12.50	
	802.11ax40/be40	MCS0	134	5670		NR	12.50		NR	12.50	
			142	5710		NR	12.50		NR	12.50	
			151	5755		NR	12.50		NR	12.50	
			159	5795		NR	12.50		NR	12.50	
	802.11ac80	VHT0	138	5690		12.03	12.02	12.50	12.02	12.03	12.50
			155	5775		12.12	11.94	12.50	12.14	12.04	12.50

	802.11ax80/be80	MCS0	138	5690	NR	12.50	NR	12.50
			155	5775	NR	12.50	NR	12.50

Initial test configuration

A.2.2.4 5.9GHz (U-NII-4)

Band	Mode	Data Rate	Ch #	Freq (MHz)	Main			Aux		
					Speed	Amphenol	Tune-up Pwr (dBm)	Speed	Amphenol	Tune-up Pwr (dBm)
U-NII-4	802.11a	6Mbps	169	5845	NR		12.50	NR		12.50
			173	5865	NR		12.50	NR		12.50
			177	5885	NR		12.50	NR		12.50
	802.11n20	HT0	169	5845	NR		12.50	NR		12.50
			173	5865	NR		12.50	NR		12.50
			177	5885	NR		12.50	NR		12.50
	802.11ax20/be20	MCS0	169	5845	NR		12.50	NR		12.50
			173	5865	NR		12.50	NR		12.50
			177	5885	NR		12.50	NR		12.50
	802.11n40	HT0	167	5835	NR		12.50	NR		12.50
			175	5875	NR		12.50	NR		12.50
	802.11ax40/be40	MCS0	167	5835	NR		12.50	NR		12.50
			175	5875	NR		12.50	NR		12.50
	802.11ac80	VHT0	171	5855	NR		12.50	NR		12.50
802.11ax80/be80	MCS0	171	5855	NR		12.50	NR		12.50	
802.11ac160	VHT0	163	5815	11.61	11.86	12.50	11.58	11.72	12.50	
802.11ax160/be160	MCS0	163	5815	NR		12.50	NR		12.50	

A.2.3 WLAN 6-7GHz (U-NII)

A.2.3.1 6.2GHz (U-NII-5)

Band	Mode	Data Rate	Ch #	Freq (MHz)	Main			Aux			
					Speed	Ampl enol	Declared Max Power (dBm)	Speed	Ampl enol	Declared Max Power (dBm)	
6GHz	802.11ax20/be20	MCS0	1	5955	NR ¹			NR ¹			11.50
			49	6195							11.50
			93	6415							11.50
	802.11ax40/be40		3	5965							11.50
			43	6165							11.50
			91	6405							11.50
	802.11ax80/be80		7	5985							11.50
			39	6145							11.50
			87	6385							11.50
	802.11ax160/be160		15	6025							11.50
			47	6185							11.50
			79	6345							11.50
	802.11be320		31	6105							11.15
			63	6265	11.29	10.78	11.50	11.27	11.22	11.50	
95		6425	11.09	10.55	11.50	11.21	11.14	11.50			

Initial test configuration

A.2.3.2 6.5GHz (U-NII-6)

Band	Mode	Data Rate	Ch #	Freq (MHz)	Main			Aux			
					Speed	Ampl enol	Declared Max Power (dBm)	Speed	Ampl enol	Declared Max Power (dBm)	
6GHz	802.11ax20/be20	MCS0	97	6435	NR1			NR1			5.75
			105	6475							5.75
			113	6515							5.75
	802.11ax40/be40		99	6445							8.75
			107	6485							8.75
	802.11ax80/be80		103	6465							11.50
			119	6545							11.50
	802.11ax160/be160		111	6505	11.02	10.50	11.50	10.74	10.74	11.50	

Initial test configuration

A.2.3.3 6.7GHz (U-NII-7)

Band	Mode	Data Rate	Ch #	Freq (MHz)	Main			Aux			
					Speed	Amph enol	Declared Max Power (dBm)	Speed	Amph enol	Declared Max Power (dBm)	
6GHz	802.11ax20/be20	MCS0	117	6535	NR1		11.50	NR1		11.50	
			149	6695							11.50
			181	6855							11.50
	802.11ax40/be40		115	6525							11.50
			147	6685							11.50
			179	6845							11.50
	802.11ax80/be80		135	6625							11.50
			151	6705							11.50
			167	6785							11.50
	802.11ax160/be160		143	6665							11.50
			175	6825							11.50
	802.11be320		127	6585	11.36	11.12	11.50	11.44	11.33	11.50	
			159	6745	11.47	11.38	11.50	11.38	11.34	11.50	

Initial test configuration

A.2.3.4 7.0GHz (U-NII-8)

Band	Mode	Data Rate	Ch #	Freq (MHz)	Main			Aux			
					Speed	Amph enol	Avg Pwr (dBm)	Speed	Amph enol	Declared Max Power (dBm)	
6GHz	802.11ax20/be20	MCS0	185	6875	NR1		5.75	NR1		5.75	
			209	6995							6.00
			233	7115							0.50
	802.11ax40/be40		187	6885							8.75
			211	7005							8.75
			227	7085							9.00
	802.11ax80/be80		183	6865							11.50
			199	6945							11.50
			215	7025							11.50
	802.11ax160/be160		207	6985							11.50
	802.11be320		191	6905							11.12

Initial test configuration

A.3 Tissue Parameters Measurement

Freq.(MHz)	Target Parameters		Measured TSL Parameters		Deviation (%)		Date
	$\epsilon'(F/m)$	$\sigma(S/m)$	$\epsilon'(F/m)$	$\sigma(S/m)$	Deviation ϵ'	Deviation σ	
2450	39.20	1.80	40.78	1.78	4.03	-1.11	2024-10-28
5200	35.99	4.66	36.04	4.59	0.14	-1.50	
5300	35.87	4.76	35.86	4.73	-0.03	-0.63	
5500	35.64	4.96	35.52	4.97	-0.34	0.20	
5600	35.53	5.07	35.31	5.07	-0.62	0.00	
5800	35.30	5.27	34.91	5.25	-1.10	-0.38	
7000	33.88	6.65	32.84	6.76	-3.07	1.65	

See Annex C for more details.

A.4 System Check Measurements

Frequency (MHz)	Average	Target SAR (W/kg)	Measured SAR (W/kg)	Deviation to target (%)	Forwarded Power (mW)	Limit (%)	Date
2450	1g	51.00	50.60	-0.78	50	± 10	2024-10-29
	10g	23.80	24.00	0.84			
5300	1g	80.40	77.40	-3.73			
	10g	22.90	22.00	-3.93			
5600	1g	83.50	89.80	7.54			
	10g	23.90	25.00	4.60			
5800	1g	80.50	78.40	-2.61			
	10g	22.70	21.80	-3.96			
7000	1g	278.00	252.43	-9.20	15.45		2024-10-29
	10g	48.70	44.01	-9.63			

See Annex B for more details.

A.4.1 E-Field

Frequency	Signal Type	Target E-field (V/m)	Measured E-field (V/m)	Deviation (%)	Date
6.5 GHz	Continuous Wave	60.60	60.56	-0.07	2024-11-04

The E-fields presented in the System Check Measurements table are Peak values. The target E-field value is obtained by simulation. The maximum target E-field value at 10 mm with 10 dBm (10 mW) source power is 60.60 V/m. The maximum measured E-field value at 10 mm with 10 dBm (10 mW) is 60.56 V/m.

A.4.2 H-Field

Frequency	Signal Type	Target H-field (A/m)	Measured H-field (A/m)	Deviation (%)	Date
6.5 GHz	Continuous Wave	0.17	0.16	-5.88	2024-11-04

The H-fields presented in the System Check Measurements table are Peak values. The target H-field value is obtained by simulation. The maximum target H-field value at 10 mm with 10 dBm (10 mW) source power is 0.17 A/m. The maximum measured E-field value at 10 mm with 10 dBm (10 mW) is 0.16 A/m.

A.4.3 Local Power Density

Frequency	Signal Type	Target Local Power Density (W/m ²)	Measured Local Power Density (W/m ²)	Deviation (%)	Date
6.5 GHz	Continuous Wave	5.12	4.93	-3.71	2024-11-04

The Local Power Density presented in the System Check Measurements table are Peak values. The target Local Power Density value is obtained by simulation. The maximum target Local Power Density value at 10 mm with 10 dBm (10 mW) source power is 5.12 W/m². The maximum measured E-field value at 10 mm with 10 dBm (10 mW) is 4.93 W/m².

A.4.4 Averaged Power Density

Frequency	Signal Type	Target Spatially Averaged Power Density (W/m ²)	Measured Spatially Averaged Power Density (W/m ²)	Deviation (%)	Date
6.5 GHz	Continuous Wave	4.93	4.65	-5.68	2024-11-04

The Spatially Averaged Power Density presented in the System Check Measurements table are Peak values. The target Spatially Averaged Power Density value is obtained by simulation. The maximum target Spatially Averaged Power Density value at 10 mm with 10 dBm (10 mW) source power is 4.93 W/m². The maximum measured Spatially Averaged Power Density value at 10 mm with 10 dBm (10 mW) is 4.65 W/m².

See *Annex B* for more details.

A.5 SAR Test Results

A.5.1 Bluetooth & 802.11b/g/n/ax/be – 2.4GHz - DTS

Antenna	Mode	Data rate	BW (MHz)	Channel Number	Freq (MHz)	Test position mode	Antenna	Scaling Factor (dB)	Measured SAR 1g (W/kg)	Reported SAR 1g (W/kg)	Plot #
Speed	802.15	DH5	1	39	2441	Laptop	Aux	0.14	0.14	0.14	
	802.11b	1Mbps	20	11	2462		Aux	0.00	0.31	0.31	
				1	2412		Main	0.07	0.49	0.50	
Amphenol	802.15	DH5	0	2402	2480	Laptop	Aux	0.04	0.18	0.18	
	802.11b	1Mbps	20	11	2462		Aux	0.00	0.52	0.52	
				1	2412		Main	0.07	0.75	0.76	1

A.5.2 802.11a/n/ac/ax/be – 5.3 GHz – U-NII-2A

Antenna	Mode	Data rate	BW (MHz)	Channel Number	Freq (MHz)	Test position mode	Antenna	Scaling Factor (dB)	Measured SAR 1g (W/kg)	Reported SAR 1g (W/kg)	Plot #
Speed	802.11ac	VHT0	160	50	5250	Laptop	Aux	0.81	0.39	0.47	
							Main	0.67	0.43	0.50	
Amphenol	802.11ac	VHT0	160	50	5250	Laptop	Aux	0.52	0.35	0.39	
							Main	0.64	0.47	0.54	2

A.5.3 802.11a/n/ac/ax/be – 5.6 GHz – U-NII-2C

Antenna	Mode	Data rate	BW (MHz)	Channel Number	Freq (MHz)	Test position mode	Antenna	Scaling Factor (dB)	Measured SAR 1g (W/kg)	Reported SAR 1g (W/kg)	Plot #
Speed	802.11ac	VHT0	160	114	5570	Laptop	Aux	0.47	0.35	0.39	
							Main	0.86	0.47	0.57	3
Amphenol	802.11ac	VHT0	160	114	5570	Laptop	Aux	0.54	0.41	0.46	
							Main	0.62	0.39	0.45	

A.5.4 802.11a/n/ac/ax/be – 5.8 GHz – U-NII-3

Antenna	Mode	Data rate	BW (MHz)	Channel Number	Freq (MHz)	Test position mode	Antenna	Scaling Factor (dB)	Measured SAR 1g (W/kg)	Reported SAR 1g (W/kg)	Plot #
Speed	802.11ac	VHT0	80	155	5775	Laptop	Aux	0.36	0.35	0.38	
				155	5775		Main	0.38	0.50	0.55	4
Amphenol	802.11ac	VHT0	80	155	5775	Laptop	Aux	0.46	0.35	0.39	
				138	5690		Main	0.48	0.49	0.55	

A.5.5 802.11a/n/ac/ax/be – 5.9 GHz – U-NII-4

Antenna	Mode	Data rate	BW (MHz)	Channel Number	Freq (MHz)	Test position mode	Antenna	Scaling Factor (dB)	Measured SAR 1g (W/kg)	Reported SAR 1g (W/kg)	Plot #
Speed	802.11ac	VHT0	160	163	5815	Laptop	Aux	0.92	0.27	0.33	
							Main	0.89	0.43	0.53	
Amphenol	802.11ac	VHT0	160	163	5815	Laptop	Aux	0.78	0.39	0.47	
							Main	0.64	0.54	0.63	5

A.5.6 802.11ax/be – 6.2 GHz – U-NII-5

Antenna	Mode Data Rate	BW (MHz)	Channel Number	Freq (MHz)	Test position mode	Ant	Scaling Factor (dB).	Measured SAR 1g. (W/kg)	Reported SAR 1g (W/kg)	SAR 10g (W/kg)	Estimated epithelial PD (W/m ²)*		No Plot
										Measured	1cm ²	4cm ²	
Speed	802.11be MCS0	320	31	6105	Laptop	Aux	0.21	0.28	0.29	0.09			
			63	6265	Laptop		0.23	0.28	0.30	0.08			
			31	6105	Laptop	Main	0.35	0.40	0.43	0.12			
			63	6265	Laptop		0.21	0.55	0.58	0.14			
Amphenol	802.11be MCS0	320	31	6105	Laptop	Aux	0.32	0.31	0.33	0.10			
			63	6265	Laptop		0.28	0.30	0.32	0.09			
			31	6105	Laptop	Main	0.42	0.40	0.44	0.11			
			63	6265	Laptop		0.72	0.51	0.60	0.13	5.12	3.00	6

A.5.7 802.11ax/be – 6.5 GHz – U-NII-6

Antenna	Mode Data Rate	BW (MHz)	Channel Number	Freq (MHz)	Test position mode	Ant	Scaling Factor (dB).	Measured SAR 1g. (W/kg)	Reported SAR 1g (W/kg)	SAR 10g (W/kg)	Estimated epithelial PD (W/m ²)		No Plot
										Measured	1cm ²	4cm ²	
Speed	802.11ax/be MCS0	160	111	6505	Laptop	Aux	0.76	0.43	0.51	0.11			
						Main	0.48	0.57	0.64	0.17			
Amphenol	802.11ax/be MCS0	160	111	6505	Laptop	Aux	0.76	0.42	0.50	0.11			
						Main	1.00	0.55	0.69	0.13	5.45	3.06	7

A.5.8 802.11ax/be – 6.7 GHz – U-NII-7

Antenna	Mode Data Rate	BW (MHz)	Channel Number	Freq (MHz)	Test position mode	Ant	Scaling Factor (dB).	Measured SAR 1g. (W/kg)	Reported SAR 1g (W/kg)	SAR 10g (W/kg)	Estimated epithelial PD (W/m ²)		No Plot
										Measured	1cm ²	4cm ²	
Speed	802.11be MCS0	320	159	6745	Laptop	Aux	0.12	0.40	0.41	0.11			
			159	6745	Laptop	Main	0.03	0.66	0.66	0.17	6.55	3.92	8
Amphenol	802.11be MCS0	320	159	6745	Laptop	Aux	0.16	0.48	0.50	0.12			
			159	6745	Laptop	Main	0.12	0.58	0.60	0.15			

A.5.9 802.11ax/be – 7.0 GHz – U-NII-8

Antenna	Mode Data Rate	BW (MHz)	Channel Number	Freq (MHz)	Test position mode	Ant	Scaling Factor (dB).	Measured SAR 1g. (W/kg)	Reported SAR 1g (W/kg)	SAR 10g (W/kg)	Estimated epithelial PD (W/m ²)		No Plot
										Measured	1cm ²	4cm ²	
Speed	802.11 be MCS0	320	191	6905	Laptop	Aux	0.12	0.40	0.41	0.10			
	802.11 be MCS0	320	191	6905	Laptop	Main	0.38	0.65	0.71	0.19	6.50	4.40	9
Amphenol	802.11 be MCS0	320	191	6905	Laptop	Aux	0.35	0.46	0.50	0.12			
	802.11 be MCS0	320	191	6905	Laptop	Main	0.01	0.59	0.59	0.17			

A.6 PD Test Results

A.6.1 802.11ax/be – 6.2 GHz – U-NII-5

Ant.	Mode Data rate	BW (MHz)	Ch #	Freq (MHz)	Position	*Uncertainty Cor. Factor	PStot avg [W/m ²] 1cm ²	**C-PStot avg [W/m ²] 1cm ²	PStot avg [W/m ²] 4cm ²	**C-PStot avg [W/m ²] 4cm ²	EM E [V/m]	EM H [A/m]	Plot #
Main Speed	802.11be	320	31	6105	Laptop	1.55	3.76	5.83	2.46	3.81	71.80	0.23	
			63	6265		1.55	3.15	4.88	2.54	3.94	69.00	0.22	
Main Amphenol	802.11be	320	31	6105	Laptop	1.55	3.86	5.98	2.65	4.11	74.10	0.22	10
			63	6265		1.55	3.53	5.47	2.46	3.81	75.30	0.23	

* The correction factor uncertainty in dB corresponds to the difference between the actual uncertainty and the 30% target value, as per the TCB Workshop Oct 20

**C-PStot = Compensated PStot

A.6.2 802.11ax/be – 6.5 GHz – U-NII-6

Ant.	Mode Data rate	BW (MHz)	Ch #	Freq (MHz)	Position	Uncertainty Cor. Factor	PStot avg [W/m ²] 1cm ²	C-PStot avg [W/m ²] 1cm ²	PStot avg [W/m ²] 4cm ²	C-PStot avg [W/m ²] 4cm ²	EM E [V/m]	EM H [A/m]	Plot #
Main Speed	802.11ax/be	160	111	6505	Laptop	1.55	2.90	4.49	1.95	3.02	63.00	0.17	11
Main Amphenol	802.11ax/be	160	111	6505	Laptop	1.55	1.90	2.95	1.52	2.36	65.20	0.18	

A.6.3 802.11ax/be – 6.7 GHz – U-NII-7

Ant.	Mode Data rate	BW (MHz)	Ch #	Freq (MHz)	Position	Uncertainty Cor. Factor	PStot avg [W/m ²] 1cm ²	C-PStot avg [W/m ²] 1cm ²	PStot avg [W/m ²] 4cm ²	C-PStot avg [W/m ²] 4cm ²	EM E [V/m]	EM H [A/m]	Plot #
Main Speed	802.11be	320	159	6745	Laptop	1.55	2.46	3.81	1.67	2.59	69.50	0.17	
Main Amphenol	802.11be	320	159	6745	Laptop	1.55	2.24	3.47	1.73	2.68	76.10	0.18	12

A.6.4 802.11ax/be – 7.0 GHz – U-NII-8

Ant.	Mode Data rate	BW (MHz)	Ch #	Freq (MHz)	Position	Uncertainty Cor. Factor	PStot avg [W/m ²] 1cm ²	C-PStot avg [W/m ²] 1cm ²	PStot avg [W/m ²] 4cm ²	C-PStot avg [W/m ²] 4cm ²	EM E [V/m]	EM H [A/m]	Plot #
Main Speed	802.11be	320	191	6905	Laptop	1.55	3.30	5.12	2.34	3.63	77.00	0.17	
Main Amphenol	802.11be	320	191	6905	Laptop	1.55	3.61	5.60	2.60	4.03	79.00	0.19	13

A.7 SAR Measurement Variability

According to FCC OET KDB 865664, SAR Measurement variability is assessed when the maximum initial measured SAR is ≥ 0.8 W/kg for a certain band/mode.

As all measured SAR results are below 0.8W/kg, therefore SAR variability is not required.

A.8 Simultaneous Transmission SAR Evaluation

According to FCC OET KDB 447498, when the sum of 1g SAR for all simultaneously transmitting antennas in an operating mode and exposure condition combination is within the SAR limit, SAR test exclusion applies to that simultaneous transmission configuration.

All the values stated in the table below are the worst case found for standalone measurement with disregard of the transmission mode or channel where the worst case was found

Antenna	Position	Highest Reported SAR (1g) (W/kg)		
		WLAN 2.4GHz	WLAN 5GHz	Bluetooth
Main	Laptop	0.76	0.63	
Aux	Laptop	0.52	0.47	0.18

Antenna	Position	Highest Reported SAR (1g) (W/kg)		
		WLAN 2.4GHz	WLAN 6GHz	Bluetooth
Main	Laptop	0.76	0.71	
Aux	Laptop	0.52	0.51	0.18

Position	Simultaneous Tx Antenna Combination		Σ SAR 1g (W/kg)	Limit (W/kg)
	Main Antenna	Aux Antenna		
Laptop	WLAN 5GHz	WLAN 5GHz	1.10	1.6
	WLAN 5GHz	WLAN 5GHz + BT	1.28	
	WLAN 5GHz	BT	0.81	
	WLAN 2.4GHz	WLAN 2.4GHz	1.28	
	WLAN 2.4GHz	BT	0.94	

Position	Simultaneous Tx Antenna Combination		Σ SAR 1g (W/kg)	Limit (W/kg)
	Main Antenna	Aux Antenna		
Laptop	WLAN 6GHz	WLAN 6GHz	1.22	1.6
	WLAN 6GHz	WLAN 6GHz + BT	1.40	
	WLAN 6GHz	BT	0.89	

Considering the results described above and according to the simultaneous transmission evaluation exclusions described in FCC OET KDB 447498, no enlarged zoom scan measurements are required

Annex B. Test System Plots

1.	DTS - 802.11b, CH1, Main– Amphenol - Laptop (SAR)	52
2.	U-NII-2A - 802.11ac160, CH50, Main– Amphenol – Laptop (SAR)	53
3.	U-NII-2C - 802.11ac160, CH114, Main Speed – Laptop (SAR)	54
4.	U-NII-3 - 802.11ac80, CH155, Main Speed – Laptop (SAR)	55
5.	U-NII-4 - 802.11ac160, CH163, Aux Main Amphenol – Laptop (SAR)	56
6.	U-NII-5 - 802.11be320, CH63, Main Amphenol – Laptop (SAR)	57
7.	U-NII-6 - 802.11ax/be160, CH111, Main Amphenol – Laptop (SAR).....	58
8.	U-NII-7 - 802.11be320, CH159 Main Speed – Laptop (SAR).....	59
9.	U-NII-8 - 802.11be320, CH191, Main Speed – Laptop (SAR).....	60
10.	System Check 2450MHz	61
11.	System Check 5300MHz	62
12.	System Check 5600MHz	63
13.	System Check 5800MHz	64
14.	System Check 7000MHz	65
15.	U-NII-5 - 802.11be320, CH31, Main Amphenol – Position Laptop (PD)	66
16.	U-NII-6 - 802.11ax/be160, CH111, Main Speed – Position Laptop (PD)	67
17.	U-NII-7 - 802.11be320, CH159, Main Amphenol – Position Laptop (PD)	68
18.	U-NII-8 - 802.11be320, CH191, Main Amphenol – Position Laptop (PD)	69
19.	Power Density System Check From 6500MHz	70

1. DTS - 802.11b, CH1, Main- Amphenol - Laptop (SAR)

Device under Test Properties

Model, Manufacturer	Dimensions [mm]	SN	DUT Type
Yoga Slim 9 14ILL10	310.0 x 215.0 x 15.0	2022538100101	Notebook PC

Exposure Conditions

Phantom Section, TSL	Position, Test Distance [mm]	Band	Group, UID	Frequency [MHz], Channel Number	Conversion Factor	TSL Conductivity [S/m]	TSL Permittivity
Flat, Head Simulating Liquid	LAPTOP, 0.00	WLAN, 2.4GHz	WLAN, 10415-AAA	2412.0, 1	7.51	1.75	40.8

Hardware Setup

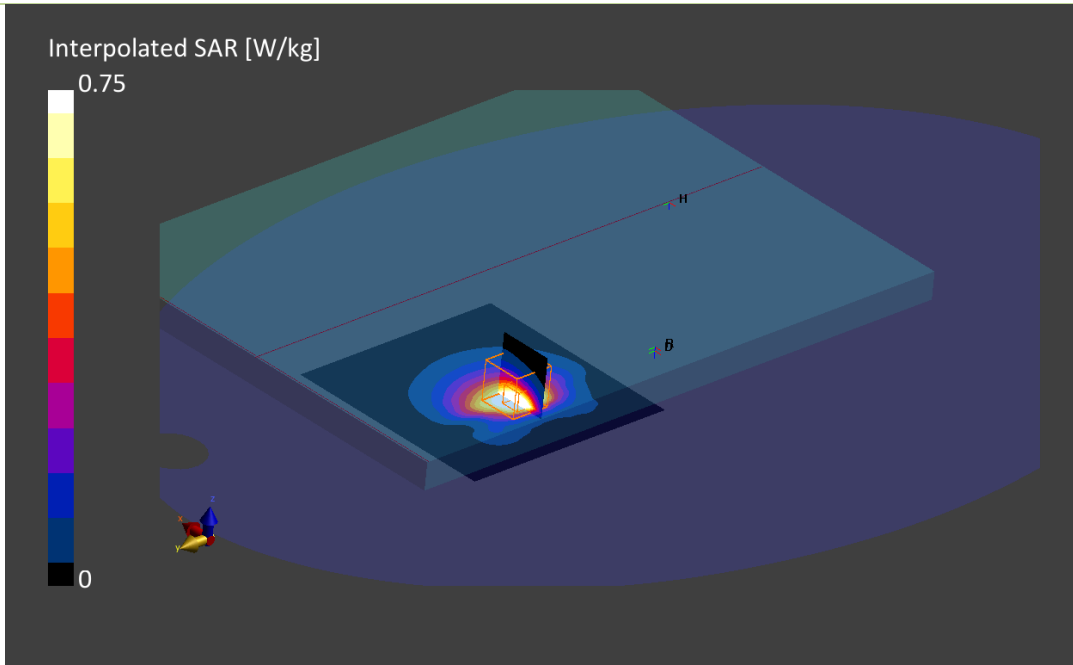
Phantom	TSL, Measured Date	Probe, Calibration Date	DAE, Calibration Date
ELI V5.0 (20deg probe tilt)	HBB600-600-10000 2024-10-28	EX3DV4 - SN3978, 2024-04-03	DAE4ip Sn1705, 2024-04-08

Scan Setup

	Area Scan	Zoom Scan
Grid Extents [mm]	160.0 x 160.0	30.0 x 30.0 x 30.0
Grid Steps [mm]	10.0 x 10.0	4.2 x 4.2 x 1.5
Sensor Surface [mm]	3.0	1.4
Graded Grid	Yes	Yes
Grading Ratio	1.5	1.5
MAIA	Confirmed by MAIA	Confirmed by MAIA
Surface Detection	VMS + 6p	VMS + 6p
Scan Method	Measured	Measured

Measurement Results

	Area Scan	Zoom Scan
Date	2024-10-29, 08:29	2024-10-29, 08:37
psSAR1g [W/kg]	0.761	0.751
psSAR10g [W/kg]	0.386	0.374
Power Drift [dB]	-0.14	-0.10
Power Scaling	Disabled	Disabled
Scaling Factor [dB]		
TSL Correction	Positive only	Positive only
M2/M1 [%]		67.4
Dist 3dB Peak [mm]		5.1



2. U-NII-2A - 802.11ac160, CH50, Main– Amphenol – Laptop (SAR)

Device under Test Properties

Model, Manufacturer	Dimensions [mm]	SN	DUT Type
Yoga Slim 9 14ILL10	310.0 x 215.0 x 15.0	2022538100101	Notebook PC

Exposure Conditions

Phantom Section, TSL	Position, Test Distance [mm]	Band	Group, UID	Frequency [MHz], Channel Number	Conversion Factor	TSL Conductivity [S/m]	TSL Permittivity
Flat, Head Simulating Liquid	LAPTOP, 0.00	WLAN 5GHz	WLAN, 10456-AAD	5250.0, 50	6.14	4.66	36.0

Hardware Setup

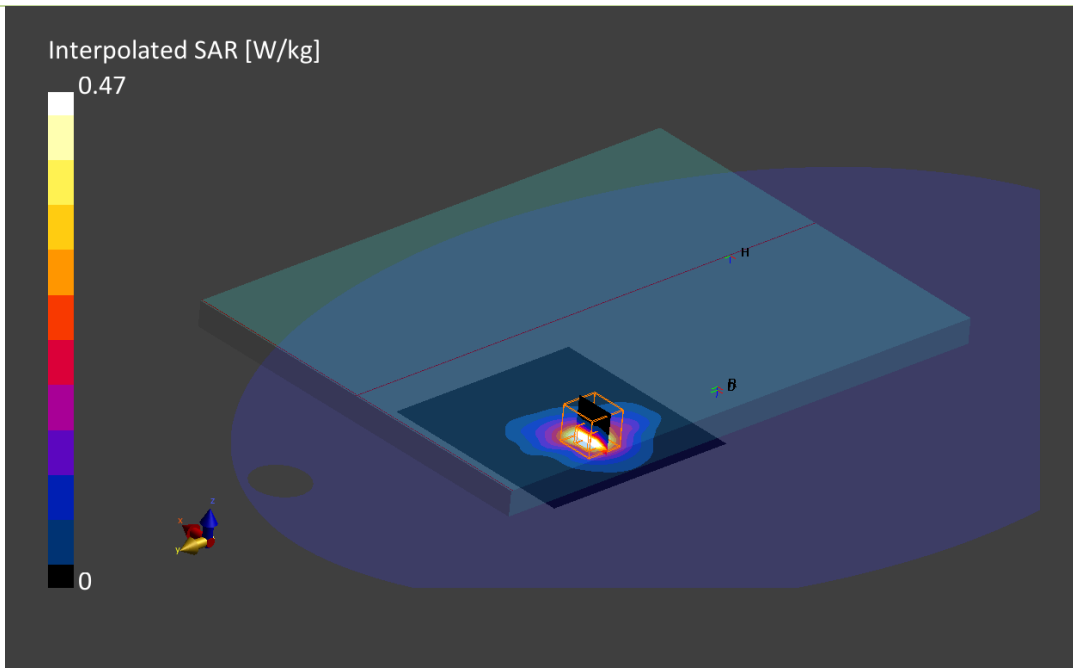
Phantom	TSL, Measured Date	Probe, Calibration Date	DAE, Calibration Date
ELI V5.0 (20deg probe tilt)	HBB600-600-10000 2024-10-28	EX3DV4 - SN3978, 2024-04-03	DAE4ip Sn1705, 2024-04-08

Scan Setup

	Area Scan	Zoom Scan
Grid Extents [mm]	160.0 x 160.0	22.0 x 22.0 x 22.0
Grid Steps [mm]	10.0 x 10.0	3.8 x 3.8 x 1.4
Sensor Surface [mm]	3.0	1.4
Graded Grid	Yes	Yes
Grading Ratio	1.5	1.5
MAIA	Confirmed by MAIA	Confirmed by MAIA
Surface Detection	VMS + 6p	VMS + 6p
Scan Method	Measured	Measured

Measurement Results

	Area Scan	Zoom Scan
Date	2024-10-29, 09:20	2024-10-29, 09:28
psSAR1g [W/kg]	0.439	0.474
psSAR10g [W/kg]	0.168	0.176
Power Drift [dB]	0.15	0.11
Power Scaling	Disabled	Disabled
Scaling Factor [dB]		
TSL Correction	Positive only	Positive only
M2/M1 [%]		56.8
Dist 3dB Peak [mm]		4.6



3. U-NII-2C - 802.11ac160, CH114, Main Speed – Laptop (SAR)

Device under Test Properties

Model, Manufacturer	Dimensions [mm]	SN	DUT Type
Yoga Slim 9 14ILL10	310.0 x 215.0 x 15.0	2022538100049	Notebook PC

Exposure Conditions

Phantom Section, TSL	Position, Test Distance [mm]	Band	Group, UID	Frequency [MHz], Channel Number	Conversion Factor	TSL Conductivity [S/m]	TSL Permittivity
Flat, Head Simulating Liquid	LAPTOP, 0.00	WLAN, 5GHz	WLAN, 10456-AAD	5570.0, 114	4.85	5.04	35.4

Hardware Setup

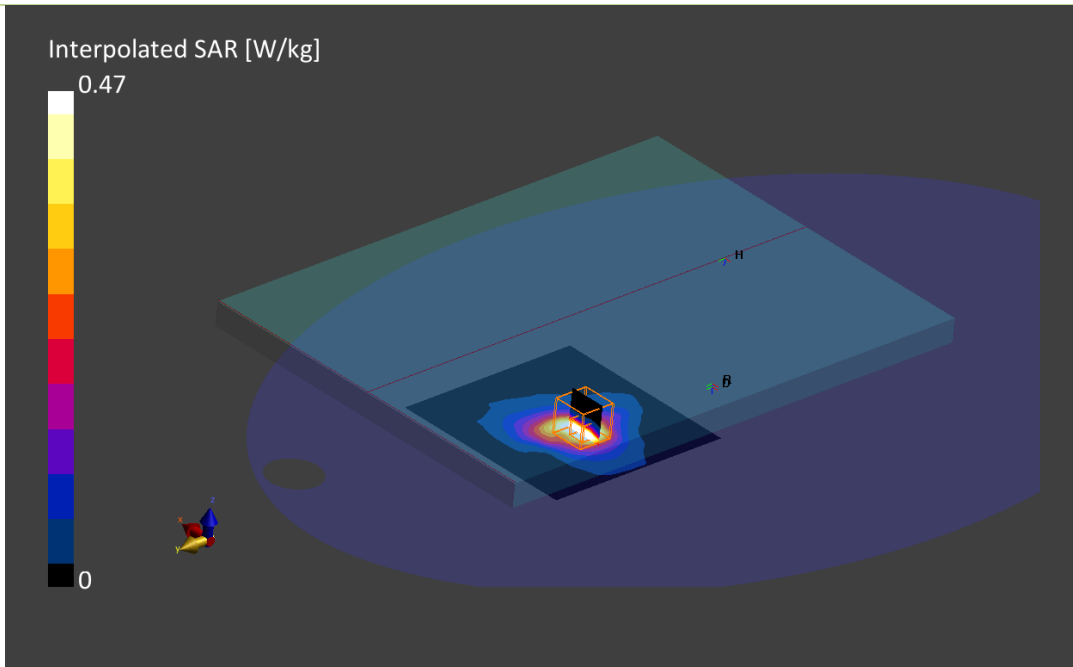
Phantom	TSL, Measured Date	Probe, Calibration Date	DAE, Calibration Date
ELI V5.0 (20deg probe tilt)	HBB600-600-10000 2024-10-28	EX3DV4 - SN3978, 2024-04-03	DAE4ip Sn1705, 2024-04-08

Scan Setup

	Area Scan	Zoom Scan
Grid Extents [mm]	160.0 x 160.0	22.0 x 22.0 x 22.0
Grid Steps [mm]	10.0 x 10.0	4.0 x 4.0 x 1.4
Sensor Surface [mm]	3.0	1.4
Graded Grid	Yes	Yes
Grading Ratio	1.5	1.5
MAIA	Confirmed by MAIA	Confirmed by MAIA
Surface Detection	VMS + 6p	VMS + 6p
Scan Method	Measured	Measured

Measurement Results

	Area Scan	Zoom Scan
Date	2024-10-29, 18:35	2024-10-29, 18:44
psSAR1g [W/kg]	0.403	0.470
psSAR10g [W/kg]	0.165	0.183
Power Drift [dB]	0.01	0.12
Power Scaling	Disabled	Disabled
Scaling Factor [dB]		
TSL Correction	Positive only	Positive only
M2/M1 [%]		58.9
Dist 3dB Peak [mm]		5.6



4. U-NII-3 - 802.11ac80, CH155, Main Speed – Laptop (SAR)

Device under Test Properties

Model, Manufacturer	Dimensions [mm]	SN	DUT Type
Yoga Slim 9 14ILL10	310.0 x 215.0 x 15.0	2022538100049	Notebook PC

Exposure Conditions

Phantom Section, TSL	Position, Test Distance [mm]	Band	Group, UID	Frequency [MHz], Channel Number	Conversion Factor	TSL Conductivity [S/m]	TSL Permittivity
Flat, Head Simulating Liquid	LAPTOP, 0.00	WLAN, 5GHz	WLAN, 10402-AAF	5775.0, 155	5.04	5.23	35.0

Hardware Setup

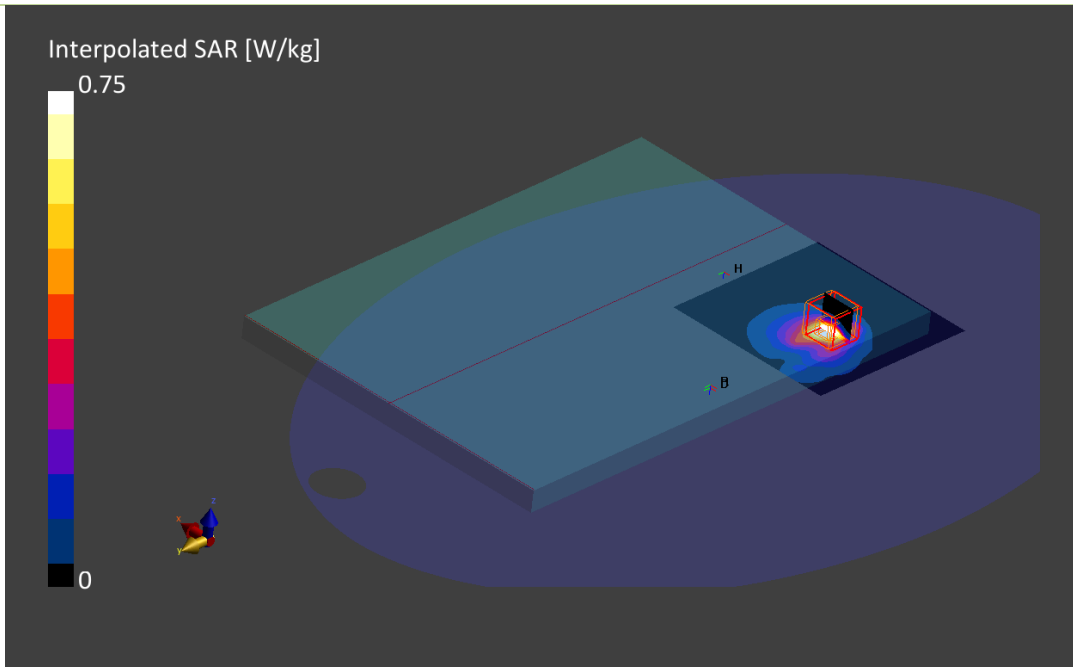
Phantom	TSL, Measured Date	Probe, Calibration Date	DAE, Calibration Date
ELI V5.0 (20deg probe tilt)	HBB600-600-10000 2024-10-28	EX3DV4 - SN3978, 2024-04-03	DAE4ip Sn1705, 2024-04-08

Scan Setup

	Area Scan	Zoom Scan
Grid Extents [mm]	160.0 x 160.0	22.0 x 22.0 x 22.0
Grid Steps [mm]	10.0 x 10.0	4.0 x 4.0 x 1.4
Sensor Surface [mm]	3.0	1.4
Graded Grid	Yes	Yes
Grading Ratio	1.5	1.5
MAIA	Confirmed by MAIA	Confirmed by MAIA
Surface Detection	VMS + 6p	VMS + 6p
Scan Method	Measured	Measured

Measurement Results

	Area Scan	Zoom Scan
Date	2024-10-29, 19:09	2024-10-29, 19:18
psSAR1g [W/kg]	0.432	0.504
psSAR10g [W/kg]	0.170	0.182
Power Drift [dB]	0.03	-0.04
Power Scaling	Disabled	Disabled
Scaling Factor [dB]		
TSL Correction	Positive only	Positive only
M2/M1 [%]		57.9
Dist 3dB Peak [mm]		5.4



5. U-NII-4 - 802.11ac160, CH163, Aux Main Amphenol – Laptop (SAR)

Device under Test Properties

Model, Manufacturer	Dimensions [mm]	SN	DUT Type
Yoga Slim 9 14ILL10	310.0 x 215.0 x 15.0	2022538100101	Notebook PC

Exposure Conditions

Phantom Section, TSL	Position, Test Distance [mm]	Band	Group, UID	Frequency [MHz], Channel Number	Conversion Factor	TSL Conductivity [S/m]	TSL Permittivity
Flat, Head Simulating Liquid	LAPTOP, 0.00	U-NII-4	WLAN, 11026-AAB	5815.0, 5815000	5.04	5.26	34.9

Hardware Setup

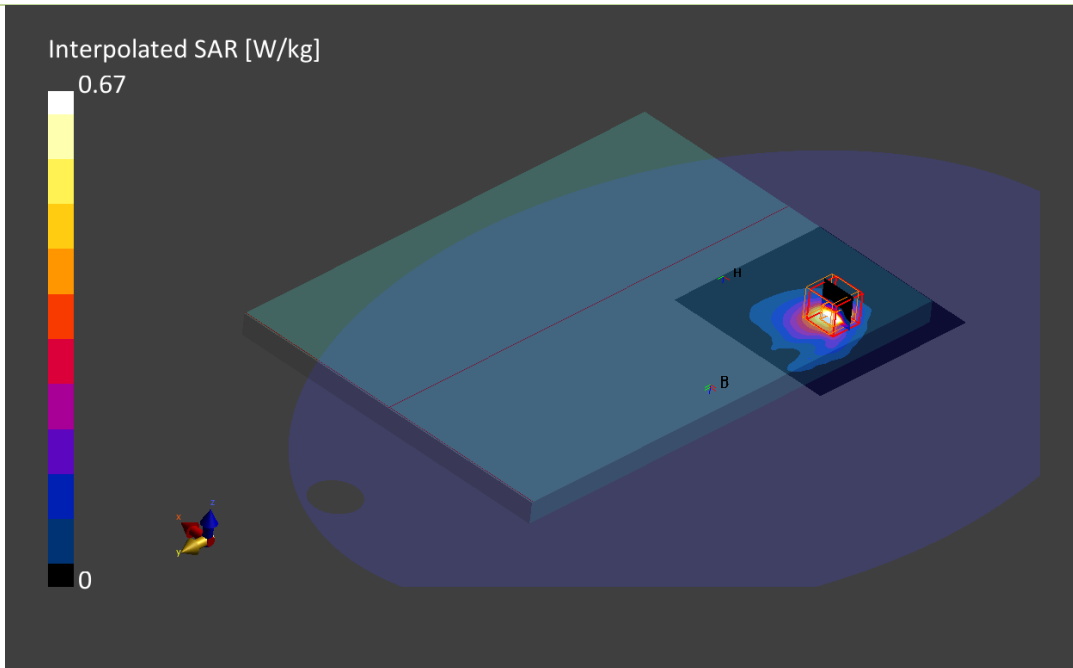
Phantom	TSL, Measured Date	Probe, Calibration Date	DAE, Calibration Date
ELI V5.0 (20deg probe tilt)	HBB600-600-10000 2024-10-28	EX3DV4 - SN3978, 2024-04-03	DAE4ip Sn1705, 2024-04-08

Scan Setup

	Area Scan	Zoom Scan
Grid Extents [mm]	100.0 x 100.0	22.0 x 22.0 x 22.0
Grid Steps [mm]	10.0 x 10.0	3.4 x 3.4 x 1.4
Sensor Surface [mm]	3.0	1.4
Graded Grid	Yes	Yes
Grading Ratio	1.5	1.5
MAIA	Confirmed by MAIA	Confirmed by MAIA
Surface Detection	VMS + 6p	VMS + 6p
Scan Method	Measured	Measured

Measurement Results

	Area Scan	Zoom Scan
Date	2024-10-29, 16:49	2024-10-29, 16:56
psSAR1g [W/kg]	0.502	0.537
psSAR10g [W/kg]	0.186	0.188
Power Drift [dB]	-0.14	-0.01
Power Scaling	Disabled	Disabled
Scaling Factor [dB]		
TSL Correction	Positive only	Positive only
M2/M1 [%]		52.6
Dist 3dB Peak [mm]		5.9



6. U-NII-5 - 802.11be320, CH63, Main Amphenol – Laptop (SAR)

Device under Test Properties

Model, Manufacturer	Dimensions [mm]	SN	DUT Type
Yoga Slim 9 14ILL10	310.0 x 215.0 x 15.0	2022538100101	Notebook PC

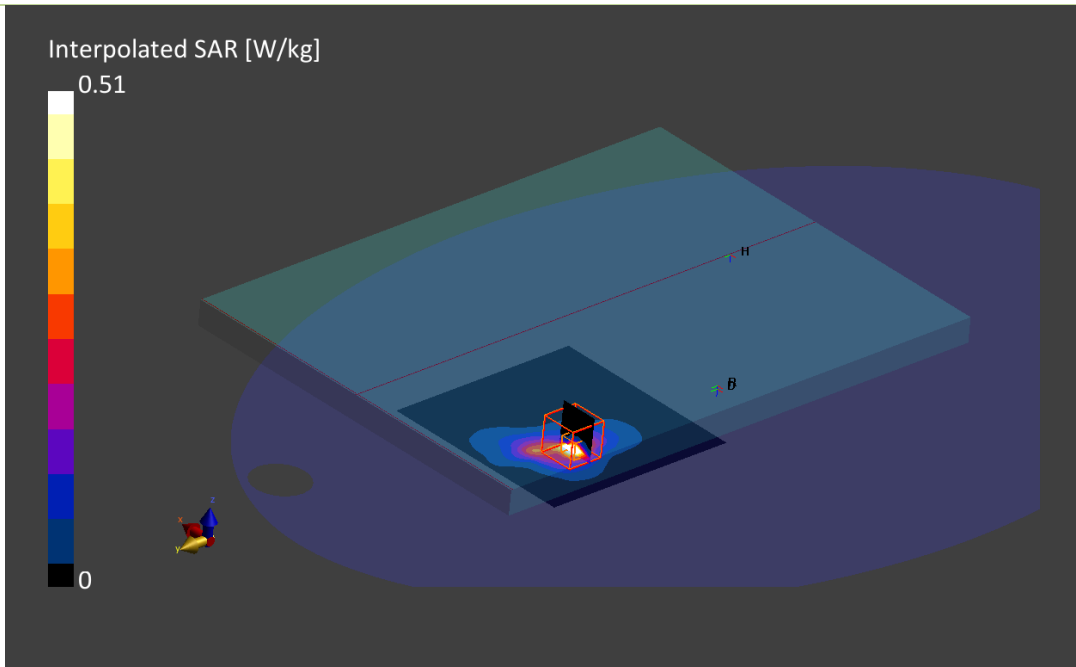
Exposure Conditions

Phantom Section, TSL	Position, Test Distance [mm]	Band	Group, UID	Frequency [MHz], Channel Number	Conversion Factor	TSL Conductivity [S/m]	TSL Permittivity
Flat, Head Simulating Liquid	LAPTOP, 0.00	U-NII-5	WLAN, 11026-AAB	6265.0, 63	5.39	5.80	34.1

Hardware Setup

Phantom	TSL, Measured Date	Probe, Calibration Date	DAE, Calibration Date
ELI V5.0 (20deg probe tilt)	HBBL-600-10000 2024-10-28	EX3DV4 - SN3978, 2024-04-03	DAE4ip Sn1705, 2024-04-08

	Scan Setup		Measurement Results		
	Area Scan	Zoom Scan		Area Scan	Zoom Scan
Grid Extents [mm]	100.0 x 100.0	22.0 x 22.0 x 22.0	Date	2024-10-29, 18:29	2024-10-29, 18:47
Grid Steps [mm]	10.0 x 10.0	3.4 x 3.4 x 1.4	psSAR1g [W/kg]	0.507	0.512
Sensor Surface [mm]	3.0	1.4	psSAR10g [W/kg]	0.143	0.131
Graded Grid	Yes	Yes	Power Drift [dB]	0.05	0.13
Grading Ratio	1.5	1.5	Power Scaling	Disabled	Disabled
MAIA	Confirmed by MAIA	Confirmed by MAIA	Scaling Factor [dB]		
Surface Detection	VMS + 6p	VMS + 6p	TSL Correction	Positive only	Positive only
Scan Method	Measured	Measured	M2/M1 [%]		52.6
			Dist 3dB Peak [mm]		5.9



7. U-NII-6 - 802.11ax/be160, CH111, Main Amphenol – Laptop (SAR)

Device under Test Properties

Model, Manufacturer	Dimensions [mm]	SN	DUT Type
Yoga Slim 9 14ILL10	310.0 x 215.0 x 15.0	2022538100101	Notebook PC

Exposure Conditions

Phantom Section, TSL	Position, Test Distance [mm]	Band	Group, UID	Frequency [MHz], Channel Number	Conversion Factor	TSL Conductivity [S/m]	TSL Permittivity
Flat, Head Simulating Liquid	LAPTOP, 0.00	U-NII-6	WLAN, 10755-AAC	6505.0, 111	5.39	6.17	33.7

Hardware Setup

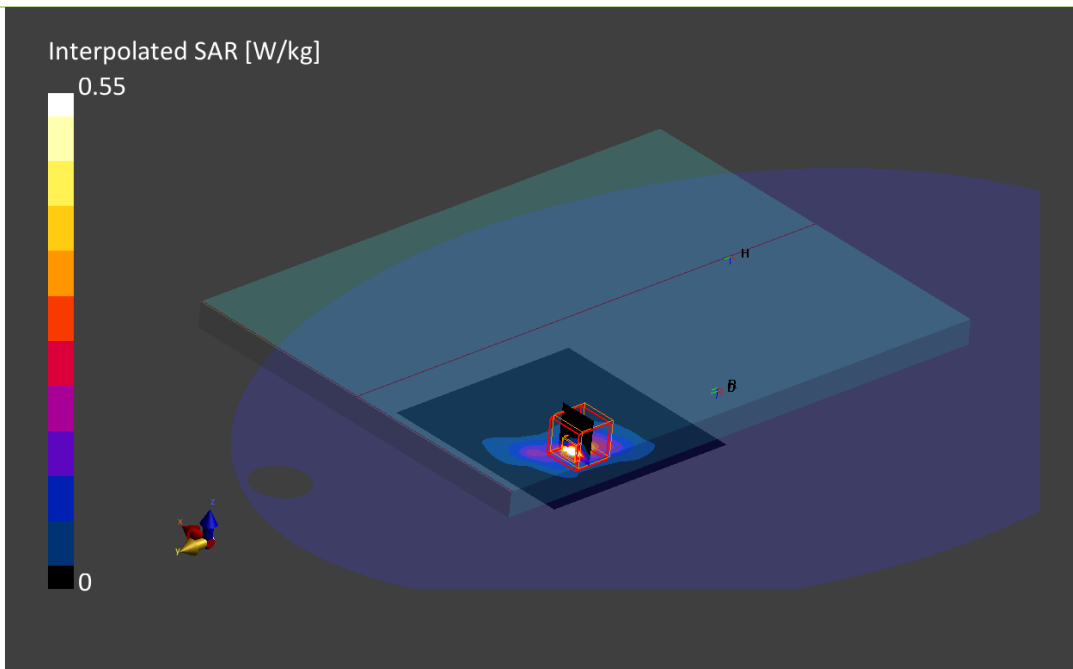
Phantom	TSL, Measured Date	Probe, Calibration Date	DAE, Calibration Date
ELI V5.0 (20deg probe tilt)	HBBL-600-10000 2024-10-28	EX3DV4 - SN3978, 2024-04-03	DAE4ip Sn1705, 2024-04-08

Scan Setup

	Area Scan	Zoom Scan
Grid Extents [mm]	160.0 x 160.0	22.0 x 22.0 x 22.0
Grid Steps [mm]	10.0 x 10.0	3.4 x 3.4 x 1.4
Sensor Surface [mm]	3.0	1.4
Graded Grid	Yes	Yes
Grading Ratio	1.5	1.5
MAIA	Confirmed by MAIA	Confirmed by MAIA
Surface Detection	VMS + 6p	VMS + 6p
Scan Method	Measured	Measured

Measurement Results

	Area Scan	Zoom Scan
Date	2024-10-29, 19:15	2024-10-29, 19:33
psSAR1g [W/kg]	0.520	0.545
psSAR10g [W/kg]	0.142	0.130
Power Drift [dB]	0.08	0.48
Power Scaling	Disabled	Disabled
Scaling Factor [dB]		
TSL Correction	Positive only	Positive only
M2/M1 [%]		50.8
Dist 3dB Peak [mm]		6.1



8. U-NII-7 - 802.11be320, CH159 Main Speed – Laptop (SAR)

Device under Test Properties

Model, Manufacturer	Dimensions [mm]	SN	DUT Type
Yoga Slim 9 14ILL10	310.0 x 215.0 x 15.0	2022538100049	Notebook PC

Exposure Conditions

Phantom Section, TSL	Position, Test Distance [mm]	Band	Group, UID	Frequency [MHz], Channel Number	Conversion Factor	TSL Conductivity [S/m]	TSL Permittivity
Flat, Head Simulating Liquid	LAPTOP, 0.00	U-NII-7	WLAN, 11026-AAB	6745.0, 159	5.39	6.47	33.3

Hardware Setup

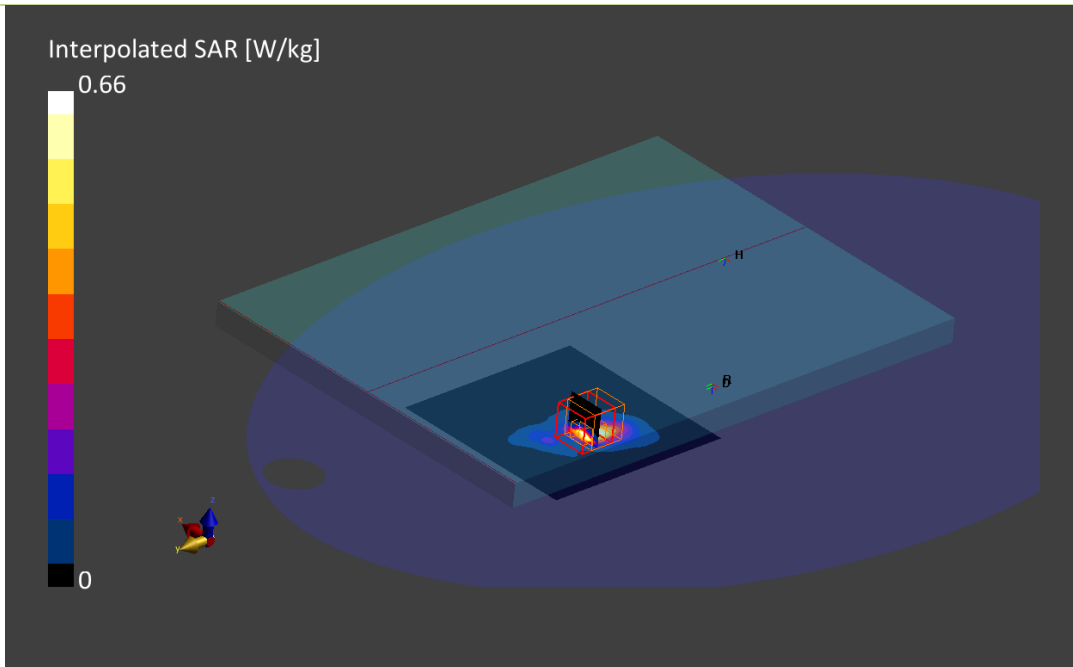
Phantom	TSL, Measured Date	Probe, Calibration Date	DAE, Calibration Date
ELI V5.0 (20deg probe tilt)	HBB600-600-10000 2024-10-28	EX3DV4 - SN3978, 2024-04-03	DAE4ip Sn1705, 2024-04-08

Scan Setup

	Area Scan	Zoom Scan
Grid Extents [mm]	120.0 x 120.0	22.0 x 22.0 x 22.0
Grid Steps [mm]	10.0 x 10.0	3.4 x 3.4 x 1.4
Sensor Surface [mm]	3.0	1.4
Graded Grid	Yes	Yes
Grading Ratio	1.5	1.5
MAIA	Confirmed by MAIA	Confirmed by MAIA
Surface Detection	VMS + 6p	VMS + 6p
Scan Method	Measured	Measured

Measurement Results

	Area Scan	Zoom Scan
Date	2024-10-29, 23:19	2024-10-29, 23:29
psSAR1g [W/kg]	0.520	0.655
psSAR10g [W/kg]	0.178	0.165
Power Drift [dB]	0.20	0.21
Power Scaling	Disabled	Disabled
Scaling Factor [dB]		
TSL Correction	Positive only	Positive only
M2/M1 [%]		49.0
Dist 3dB Peak [mm]		6.1



9. U-NII-8 - 802.11be320, CH191, Main Speed – Laptop (SAR)

Device under Test Properties

Model, Manufacturer	Dimensions [mm]	SN	DUT Type
Yoga Slim 9 14ILL10	310.0 x 215.0 x 15.0	2022538100049	Notebook PC

Exposure Conditions

Phantom Section, TSL	Position, Test Distance [mm]	Band	Group, UID	Frequency [MHz], Channel Number	Conversion Factor	TSL Conductivity [S/m]	TSL Permittivity
Flat, Head Simulating Liquid	LAPTOP, 0.00	U-NII-8	WLAN, 10755-AAC	6905.0, 191	5.39	6.64	33.0

Hardware Setup

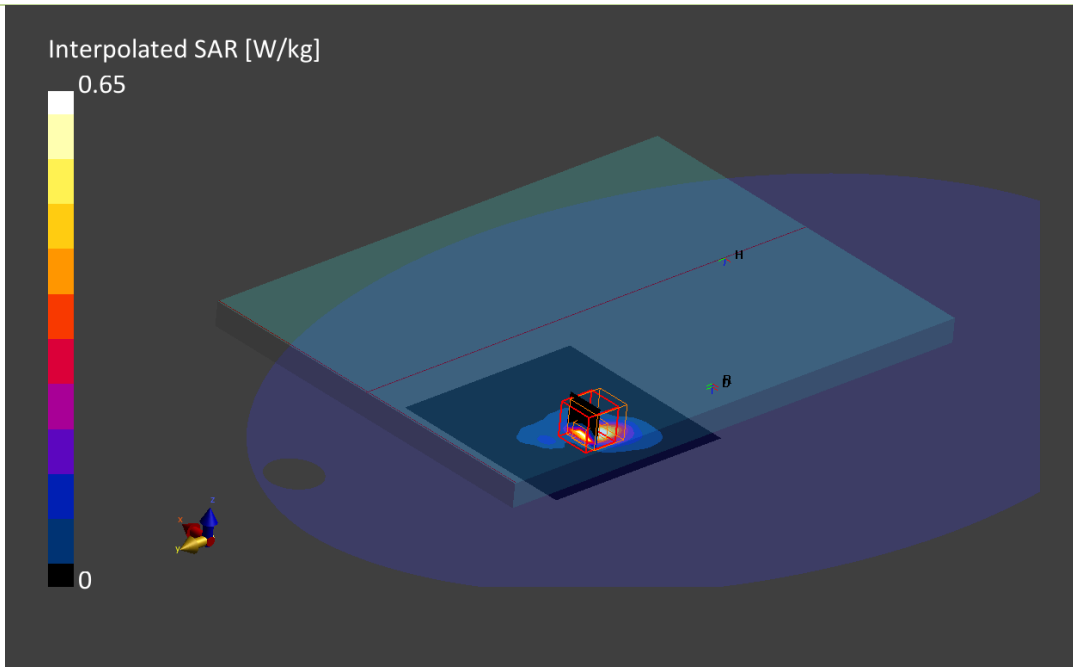
Phantom	TSL, Measured Date	Probe, Calibration Date	DAE, Calibration Date
ELI V5.0 (20deg probe tilt)	HBB600-600-10000 2024-10-28	EX3DV4 - SN3978, 2024-04-03	DAE4ip Sn1705, 2024-04-08

Scan Setup

	Area Scan	Zoom Scan
Grid Extents [mm]	160.0 x 160.0	22.0 x 22.0 x 22.0
Grid Steps [mm]	10.0 x 10.0	3.4 x 3.4 x 1.4
Sensor Surface [mm]	3.0	1.4
Graded Grid	Yes	Yes
Grading Ratio	1.5	1.5
MAIA	Confirmed by MAIA	Confirmed by MAIA
Surface Detection	VMS + 6p	VMS + 6p
Scan Method	Measured	Measured

Measurement Results

	Area Scan	Zoom Scan
Date	2024-10-29, 00:07	2024-10-29, 00:17
psSAR1g [W/kg]	0.572	0.650
psSAR10g [W/kg]	0.191	0.185
Power Drift [dB]	0.15	0.17
Power Scaling	Disabled	Disabled
Scaling Factor		
TSL Correction [dB]	Positive only	Positive only
M2/M1 [%]		47.0
Dist 3dB Peak [mm]		6.5



10. System Check 2450MHz

Device under Test Properties

Model, Manufacturer	Dimensions [mm]	SN	DUT Type
D2450GHzV2 , SPEAG	50.0 x 10.0 x 15.0	937	Validation Dipole

Exposure Conditions

Phantom Section, TSL	Position, Test Distance [mm]	Band	Group, UID	Frequency [MHz], Channel Number	Conversion Factor	TSL Conductivity [S/m]	TSL Permittivity
Flat, HSL	,		CW, 0--	2450.0, 0	7.51	1.78	40.8

Hardware Setup

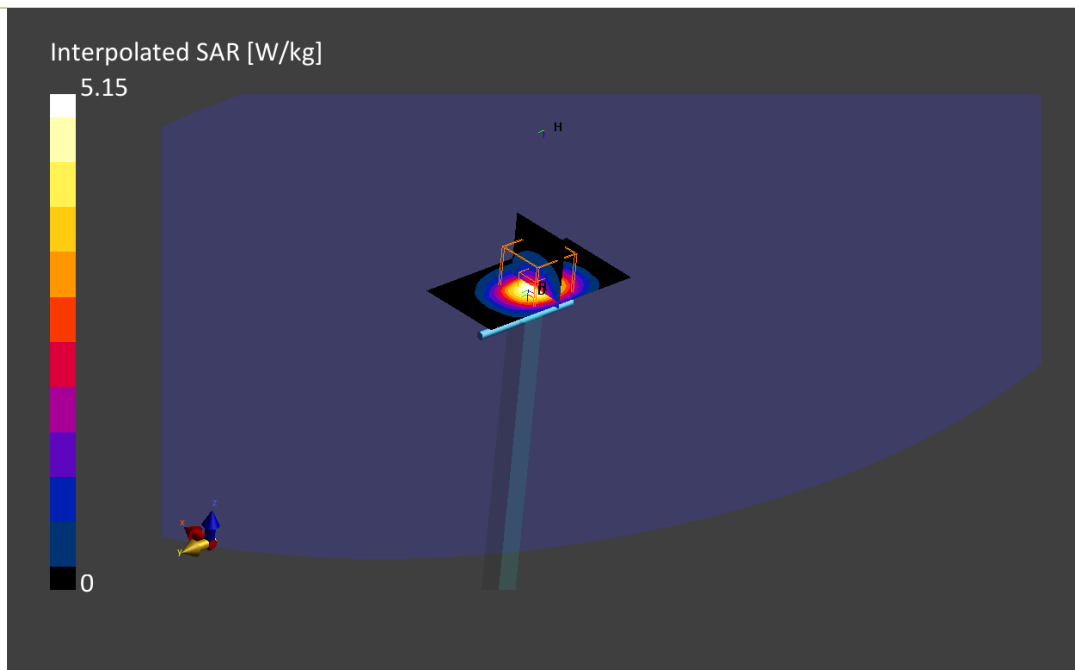
Phantom	TSL, Measured Date	Probe, Calibration Date	DAE, Calibration Date
ELI V5.0 (20deg probe tilt)	HBB600-600-10000 2024-10-28	EX3DV4 - SN3978, 2024-04-03	DAE4ip Sn1705, 2024-04-08

Scan Setup

	Area Scan	Zoom Scan
Grid Extents [mm]	40.0 x 80.0	30.0 x 30.0 x 30.0
Grid Steps [mm]	10.0 x 10.0	5.0 x 5.0 x 1.5
Sensor Surface [mm]	3.0	1.4
Graded Grid	Yes	Yes
Grading Ratio	1.5	1.5
MAIA	Confirmed by MAIA	Confirmed by MAIA
Surface Detection	VMS + 6p	VMS + 6p
Scan Method	Measured	Measured

Measurement Results

	Area Scan	Zoom Scan
Date	2024-10-29, 15:42	2024-10-29, 15:49
psSAR1g [W/kg]	2.41	2.53
psSAR10g [W/kg]	1.18	1.20
Power Drift [dB]	-0.01	-0.08
Power Scaling	Disabled	Disabled
Scaling Factor		
TSL Correction	Positive only	Positive only
M2/M1 [%]		79.6
Dist 3dB Peak [mm]		9.5



11. System Check 5300MHz

Device under Test Properties

Model, Manufacturer	Dimensions [mm]	SN	DUT Type
D5GHzV2 , SPEAG	50.0 x 10.0 x 15.0	1164	Validation Dipole

Exposure Conditions

Phantom Section, TSL	Position, Test Distance [mm]	Band	Group, UID	Frequency [MHz], Channel Number	Conversion Factor	TSL Conductivity [S/m]	TSL Permittivity
Flat, HSL	,		CW, 0--	5300.0, 0	5.91	4.73	35.9

Hardware Setup

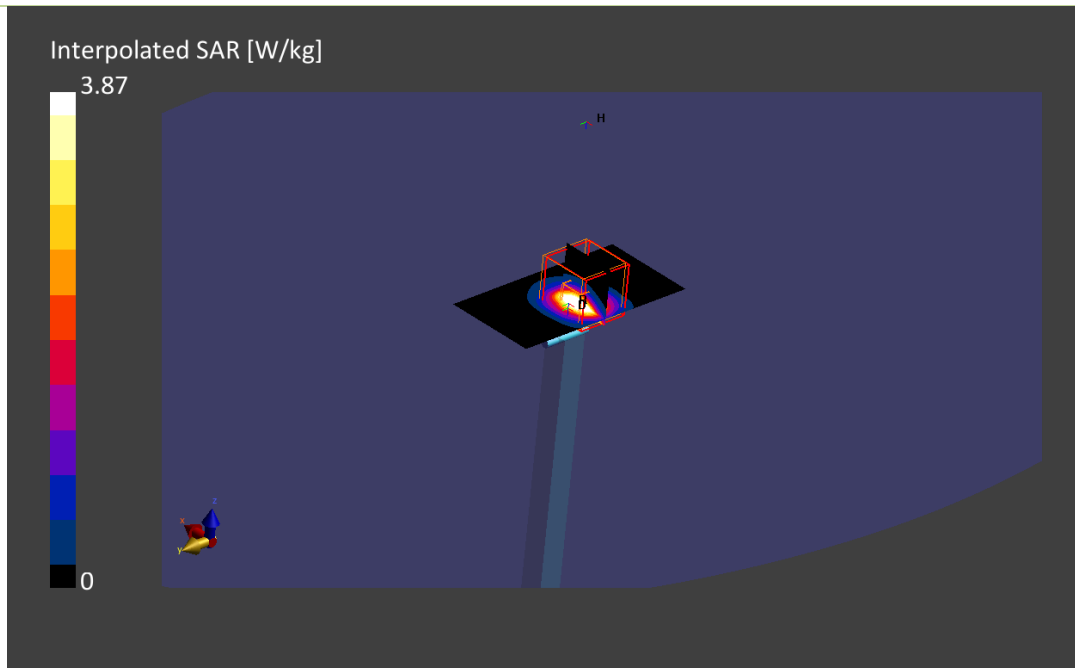
Phantom	TSL, Measured Date	Probe, Calibration Date	DAE, Calibration Date
ELI V5.0 (20deg probe tilt)	HBB600-600-10000 2024-10-28	EX3DV4 - SN3978, 2024-04-03	DAE4ip Sn1705, 2024-04-08

Scan Setup

	Area Scan	Zoom Scan
Grid Extents [mm]	40.0 x 80.0	22.0 x 22.0 x 22.0
Grid Steps [mm]	10.0 x 10.0	4.0 x 4.0 x 1.4
Sensor Surface [mm]	3.0	1.4
Graded Grid	Yes	Yes
Grading Ratio	1.5	1.5
MAIA	Confirmed by MAIA	Confirmed by MAIA
Surface Detection	VMS + 6p	VMS + 6p
Scan Method	Measured	Measured

Measurement Results

	Area Scan	Zoom Scan
Date	2024-10-29, 16:41	2024-10-29, 16:47
psSAR1g [W/kg]	3.22	3.87
psSAR10g [W/kg]	1.01	1.10
Power Drift [dB]	0.01	-0.12
Power Scaling	Disabled	Disabled
Scaling Factor		
TSL Correction	Positive only	Positive only
M2/M1 [%]		65.4
Dist 3dB Peak [mm]		7.6



12. System Check 5600MHz

Device under Test Properties

Model, Manufacturer	Dimensions [mm]	SN	DUT Type
D5GHzV2 , SPEAG	50.0 x 10.0 x 15.0	1164	Validation Dipole

Exposure Conditions

Phantom Section, TSL	Position, Test Distance [mm]	Band	Group, UID	Frequency [MHz], Channel Number	Conversion Factor	TSL Conductivity [S/m]	TSL Permittivity
Flat, HSL	,		CW, 0--	5600.0, 0	4.85	5.07	35.3

Hardware Setup

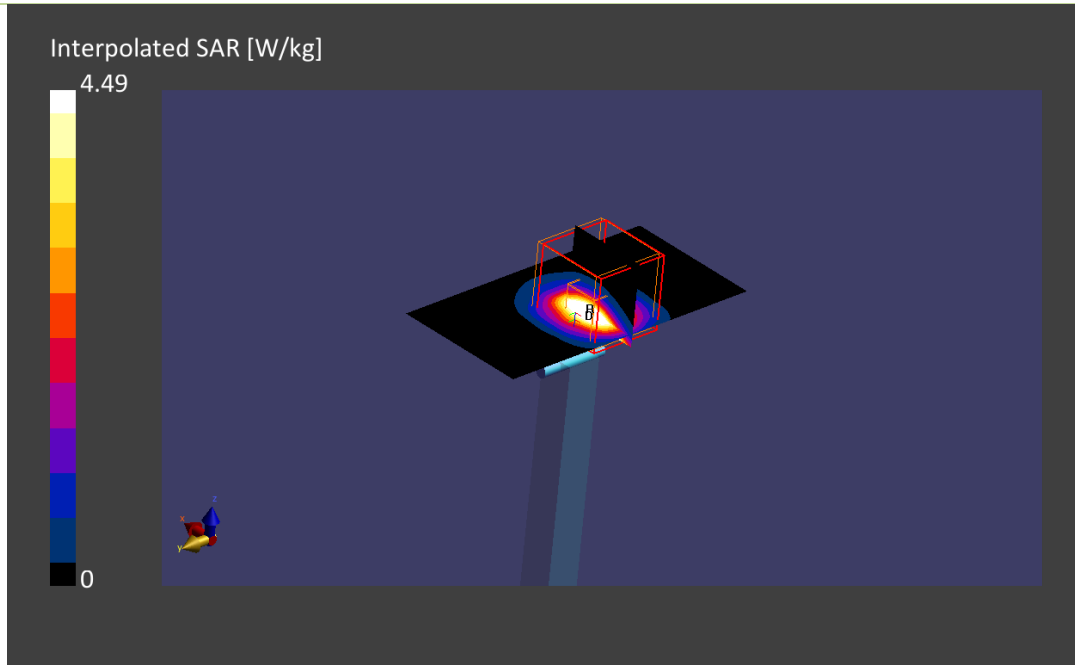
Phantom	TSL, Measured Date	TSL, Measured Date	Probe, Calibration Date
ELI V5.0 (20deg probe tilt)	HBB600-600-10000 2024-10-28	EX3DV4 - SN3978, 2024-04-03	DAE4ip Sn1705, 2024-04-08

Scan Setup

	Area Scan	Zoom Scan
Grid Extents [mm]	40.0 x 80.0	22.0 x 22.0 x 22.0
Grid Steps [mm]	10.0 x 10.0	4.0 x 4.0 x 1.4
Sensor Surface [mm]	3.0	1.4
Graded Grid	Yes	Yes
Grading Ratio	1.5	1.5
MAIA	Confirmed by MAIA	Confirmed by MAIA
Surface Detection	VMS + 6p	VMS + 6p
Scan Method	Measured	Measured

Measurement Results

	Area Scan	Zoom Scan
Date	2024-10-29, 16:50	2024-10-29, 16:57
psSAR1g [W/kg]	3.74	4.49
psSAR10g [W/kg]	1.16	1.25
Power Drift [dB]	0.00	-0.10
Power Scaling	Disabled	Disabled
Scaling Factor		
TSL Correction	Positive only	Positive only
M2/M1 [%]		62.7
Dist 3dB Peak [mm]		7.6



13. System Check 5800MHz

Device under Test Properties

Model, Manufacturer	Dimensions [mm]	SN	DUT Type
D5GHzV2 , SPEAG	50.0 x 10.0 x 15.0	1164	Validation Dipole

Exposure Conditions

Phantom Section, TSL	Position, Test Distance [mm]	Band	Group, UID	Frequency [MHz], Channel Number	Conversion Factor	TSL Conductivity [S/m]	TSL Permittivity
Flat, HSL	,		CW, 0--	5800.0, 0	5.04	5.25	34.9

Hardware Setup

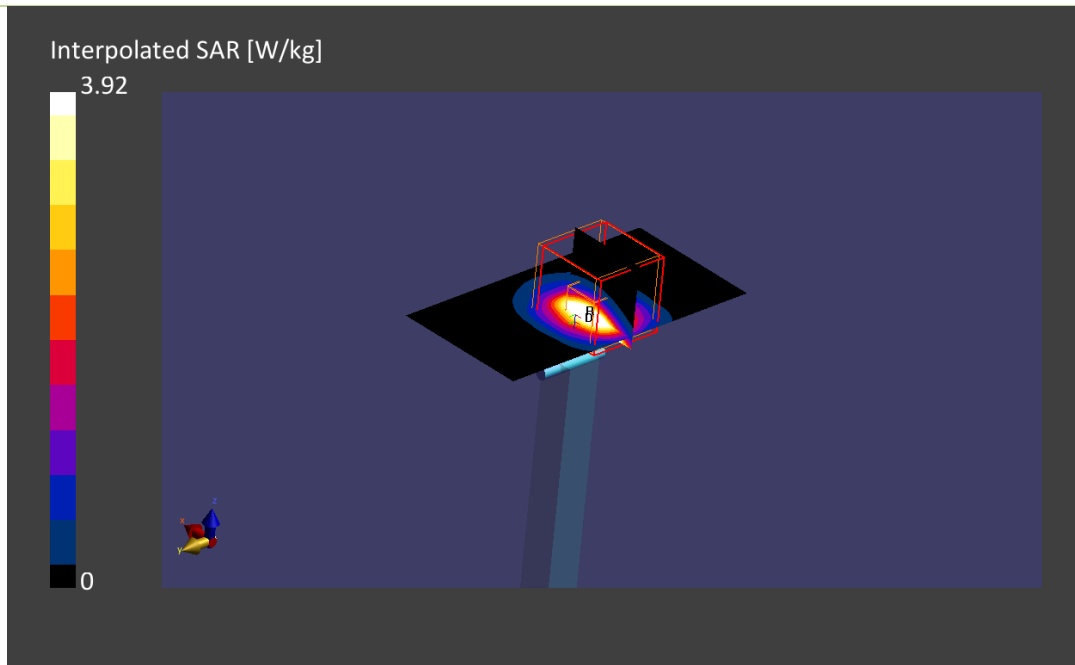
Phantom	TSL, Measured Date	Probe, Calibration Date	DAE, Calibration Date
ELI V5.0 (20deg probe tilt)	HBB600-600-10000 2024-10-28	EX3DV4 - SN3978, 2024-04-03	DAE4ip Sn1705, 2024-04-08

Scan Setup

	Area Scan	Zoom Scan
Grid Extents [mm]	40.0 x 80.0	22.0 x 22.0 x 22.0
Grid Steps [mm]	10.0 x 10.0	4.0 x 4.0 x 1.4
Sensor Surface [mm]	3.0	1.4
Graded Grid	Yes	Yes
Grading Ratio	1.5	1.5
MAIA	Confirmed by MAIA	Confirmed by MAIA
Surface Detection	VMS + 6p	VMS + 6p
Scan Method	Measured	Measured

Measurement Results

	Area Scan	Zoom Scan
Date	2024-10-29, 17:00	2024-10-29, 17:06
psSAR1g [W/kg]	3.29	3.92
psSAR10g [W/kg]	1.02	1.09
Power Drift [dB]	-0.01	-0.13
Power Scaling	Disabled	Disabled
Scaling Factor [dB]		
TSL Correction	Positive only	Positive only
M2/M1 [%]		60.4
Dist 3dB Peak [mm]		7.9



14. System Check 7000MHz

Device under Test Properties

Model, Manufacturer	Dimensions [mm]	SN	DUT Type
D7.0GHzV2, Speag	50.0 x 10.0 x 8.0	1008	Validation Dipole

Exposure Conditions

Phantom Section, TSL	Position, Test Distance [mm]	Band	Group, UID	Frequency [MHz], Channel Number	Conversion Factor	TSL Conductivity [S/m]	TSL Permittivity
Flat, HSL	,		CW, 0--	7000.0, 0	5.39	6.76	32.8

Hardware Setup

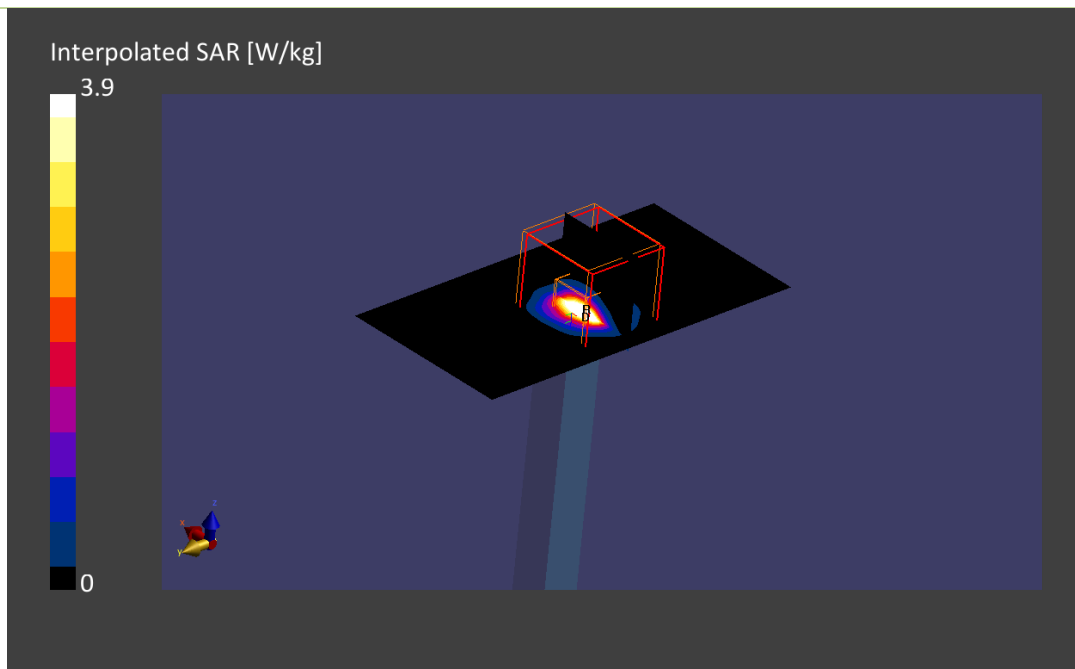
Phantom	TSL, Measured Date	Probe, Calibration Date	DAE, Calibration Date
ELI V5.0 (20deg probe tilt)	HBB600-600-10000 2024-10-28	EX3DV4 - SN3978, 2024-04-03	DAE4ip Sn1705, 2024-04-08

Scan Setup

	Area Scan	Zoom Scan
Grid Extents [mm]	45.0 x 90.0	22.0 x 22.0 x 22.0
Grid Steps [mm]	7.5 x 7.5	3.0 x 3.0 x 1.4
Sensor Surface [mm]	3.0	1.4
Graded Grid	Yes	Yes
Grading Ratio	1.5	1.5
MAIA	Confirmed by MAIA	Confirmed by MAIA
Surface Detection	VMS + 6p	VMS + 6p
Scan Method	Measured	Measured

Measurement Results

	Area Scan	Zoom Scan
Date	2024-10-29, 15:14	2024-10-29, 15:24
psSAR1g [W/kg]	3.34	3.90
psSAR10g [W/kg]	0.670	0.680
Power Drift [dB]	0.09	-0.05
Power Scaling	Disabled	Disabled
Scaling Factor		
TSL Correction [dB]	Positive only	Positive only
M2/M1 [%]		47.4
Dist 3dB Peak [mm]		4.6



15. U-NII-5 - 802.11be320, CH31, Main Amphenol – Position Laptop (PD)**DUT: Yoga Slim 9 14ILL10 BE201D2W; Type: PIFA****Signal Source: modulation Custom Channel for 802.11be, level 11.50dBm.**Medium parameters used: $\sigma = 0$ S/m, $\epsilon_r = 1$; $\rho = 0$ kg/m³

Phantom section: Table Section

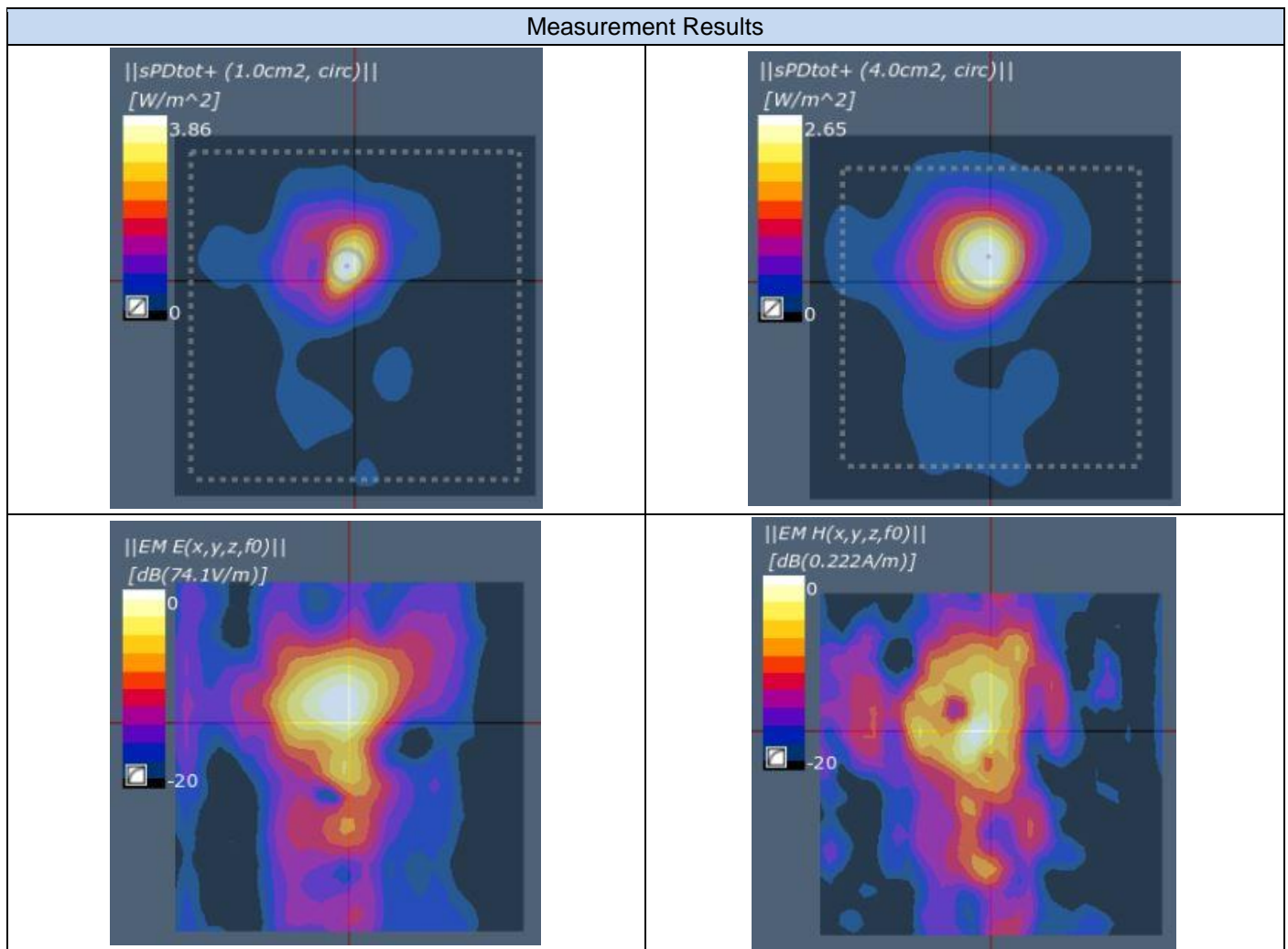
Measurement Standard: DASYS6 (IEEE/IEC/ANSI C63.19-2011)

DASY Configuration:

- Probe: EUmmW – SN9538 ; ConvF(1, 1, 1); Calibrated: 2024-05-06;
 - Modulation Compensation:
- Sensor-Surface : 0mm (Fix Surface), $z = 2$ mm
- Electronics: DAE4 Sn1703; Calibrated: 2024-02-13
- Phantom: Cover; Type: SPEAG Phantom Cover
- cDASY6 5G Module v2.4
- Test Date: 2024-11-04

Distance-2mm:Measurement Resolution = $\lambda/20$ mm

Measurement Scan area = 120 mm x 120 mm

The plots below show the average PStot (1cm²), PStot (4cm²) the E-field and the H Field

16. U-NII-6 - 802.11ax/be160, CH111, Main Speed – Position Laptop (PD)**DUT: Yoga Slim 9 14ILL10 BE201D2W; Type: PIFA****Signal Source: modulation Custom Channel for 802.11ax/be, level 11.50dBm.**Medium parameters used: $\sigma = 0$ S/m, $\epsilon_r = 1$; $\rho = 0$ kg/m³

Phantom section: Table Section

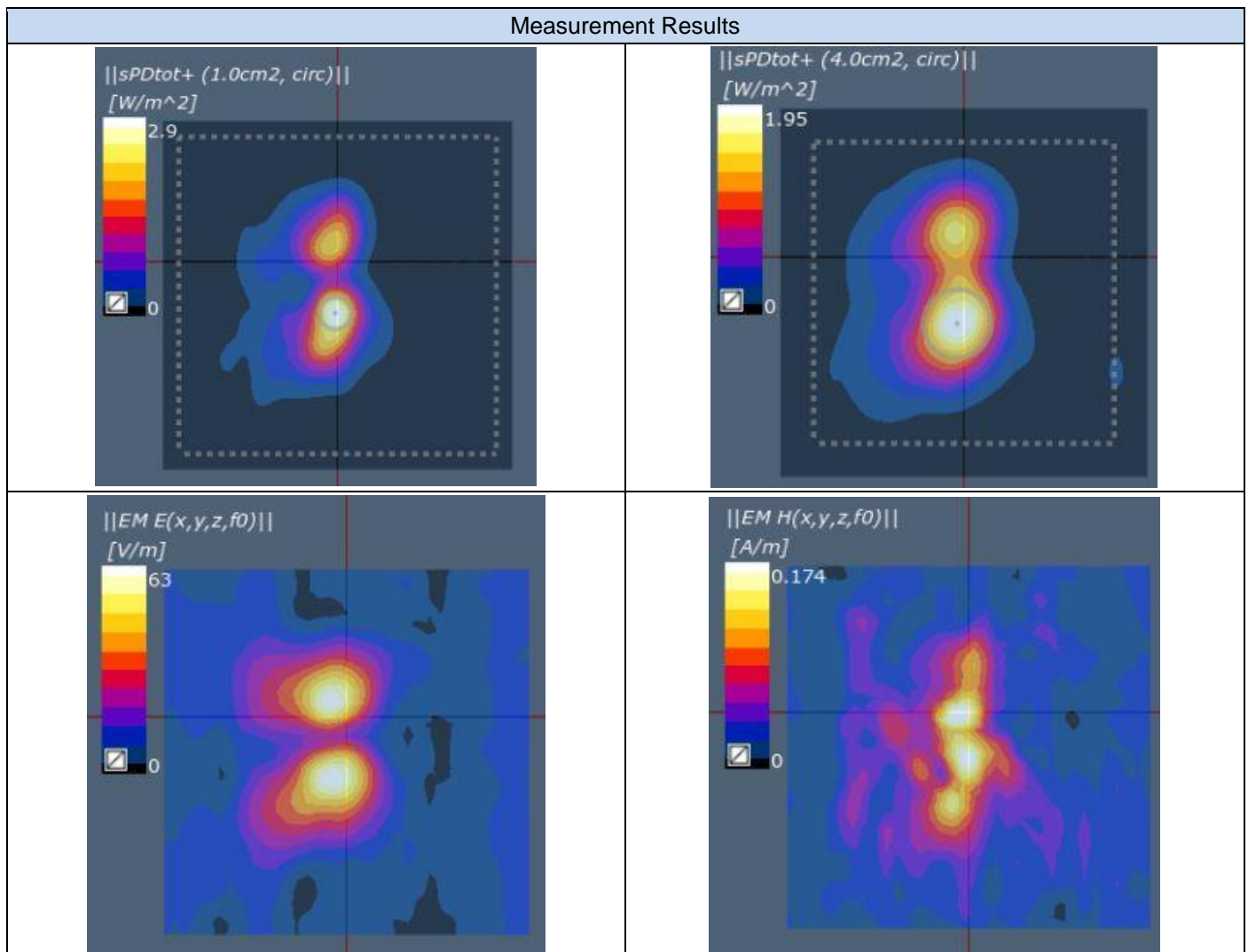
Measurement Standard: DASYS6 (IEEE/IEC/ANSI C63.19-2011)

DASY Configuration:

- Probe: EUmmW – SN9538 ; ConvF(1, 1, 1); Calibrated: 2024-05-06;
 - Modulation Compensation:
- Sensor-Surface : 0mm (Fix Surface), z = 2mm
- Electronics: DAE4 Sn1703; Calibrated: 2024-02-13
- Phantom: Cover; Type: SPEAG Phantom Cover
- cDASY6 5G Module v2.4
- Test Date: 2024-11-04

Distance-2 mm:Measurement Resolution = $\lambda/20$ mm

Measurement Scan area = 120 mm x 120 mm

The plots below show the average PStot (1cm²), PStot (4cm²) the E-field and the H Field

17. U-NII-7 - 802.11be320, CH159, Main Amphenol – Position Laptop (PD)**DUT: Yoga Slim 9 14ILL10 BE201D2W; Type: PIFA****Signal Source: modulation Custom Channel for 802.11be320, level 11.50dBm.**Medium parameters used: $\sigma = 0$ S/m, $\epsilon_r = 1$; $\rho = 0$ kg/m³

Phantom section: Table Section

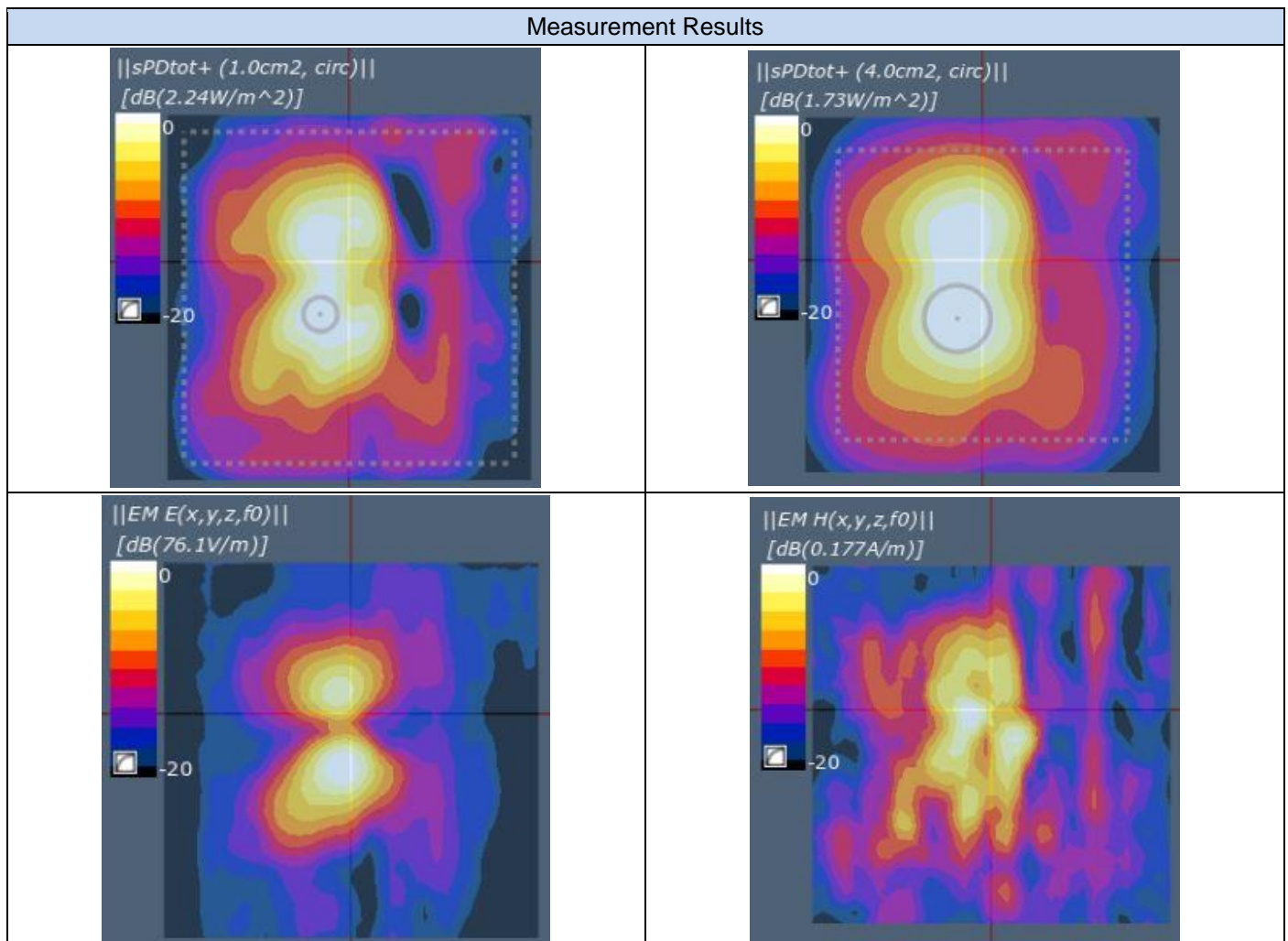
Measurement Standard: DASYS6 (IEEE/IEC/ANSI C63.19-2011)

DASY Configuration:

- Probe: EUmmW – SN9538 ; ConvF(1, 1, 1); Calibrated: 2024-05-06;
 - Modulation Compensation:
- Sensor-Surface : 0mm (Fix Surface), $z = 2$ mm
- Electronics: DAE4 Sn1703; Calibrated: 2024-02-13
- Phantom: Cover; Type: SPEAG Phantom Cover
- cDASY6 5G Module v2.4
- Test Date: 2024-11-05

Distance-2 mm:Measurement Resolution = $\lambda/20$ mm

Measurement Scan area = 120 mm x 120 mm

The plots below show the average PStot (1cm²), PStot (4cm²) the E-field and the H Field

18. U-NII-8 - 802.11be320, CH191, Main Amphenol – Position Laptop (PD)**DUT: Yoga Slim 9 14ILL10 BE201D2W; Type: PIFA****Signal Source: modulation Custom Channel for 802.11ax160, level 11.50dBm.**Medium parameters used: $\sigma = 0$ S/m, $\epsilon_r = 1$; $\rho = 0$ kg/m³

Phantom section: Table Section

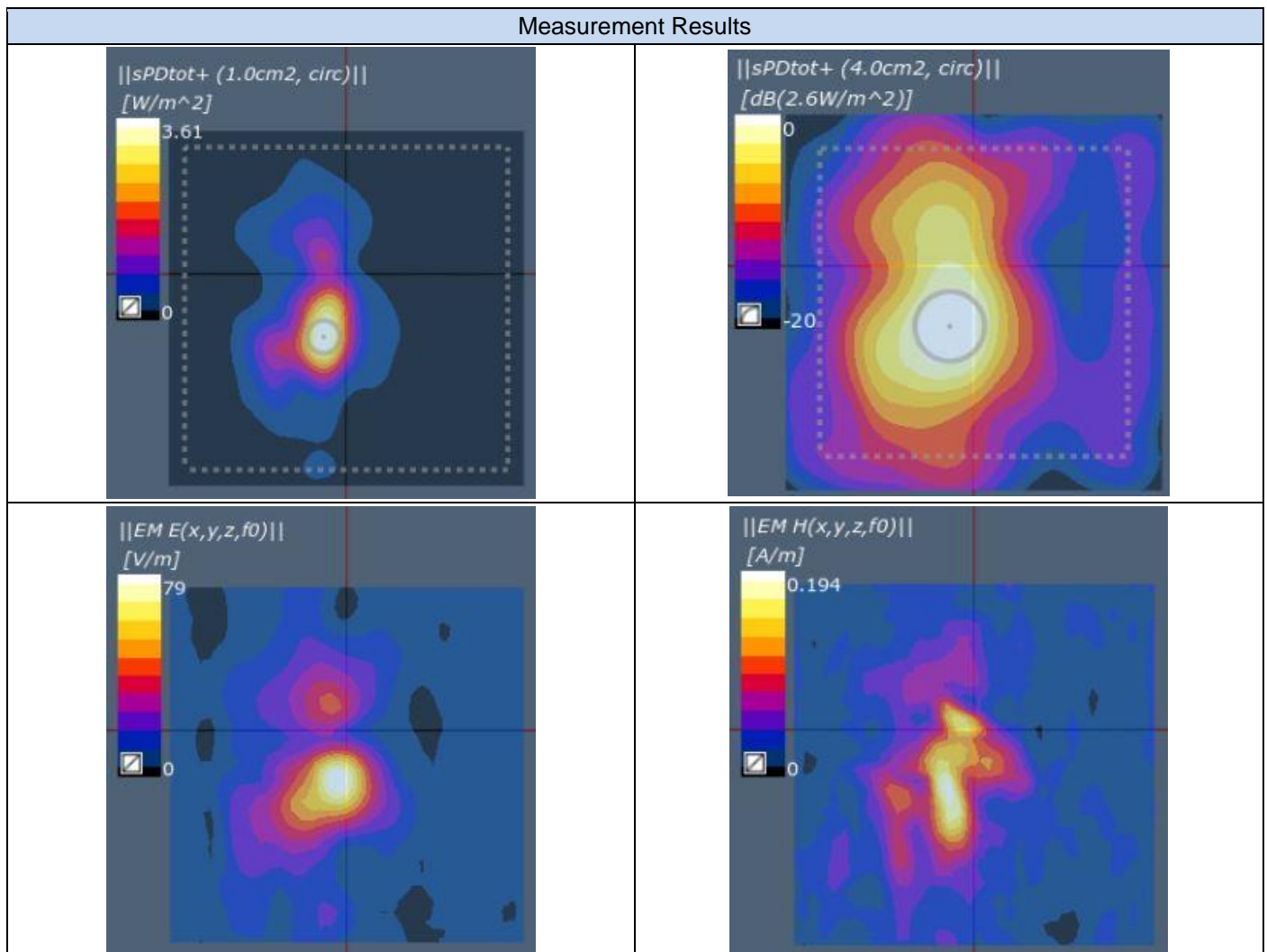
Measurement Standard: DASYS6 (IEEE/IEC/ANSI C63.19-2011)

DASY Configuration:

- Probe: EUmmW – SN9538 ; ConvF(1, 1, 1); Calibrated: 2024-05-06;
 - Modulation Compensation:
- Sensor-Surface : 0mm (Fix Surface), z = 2mm
- Electronics: DAE4 Sn1703; Calibrated: 2024-02-13
- Phantom: Cover; Type: SPEAG Phantom Cover
- cDASY6 5G Module v2.4
- Test Date: 2024-11-05

Distance-2 mm:Measurement Resolution = $\lambda/20$ mm

Measurement Scan area = 120 mm x 120 mm

The plots below show the average PStot (1cm²), PStot (4cm²) the E-field and the H Field

19. Power Density System Check From 6500MHz

DUT: Horn reference source; Type: PE9859/SF-15;

Signal Source: modulation CW, level 10 dBm.

Medium parameters used: $\sigma = 0$ S/m, $\epsilon_r = 1$; $\rho = 0$ kg/m³

Phantom section: Table Section

Measurement Standard: DASY6 (IEEE/IEC/ANSI C63.19-2011)

DASY Configuration:

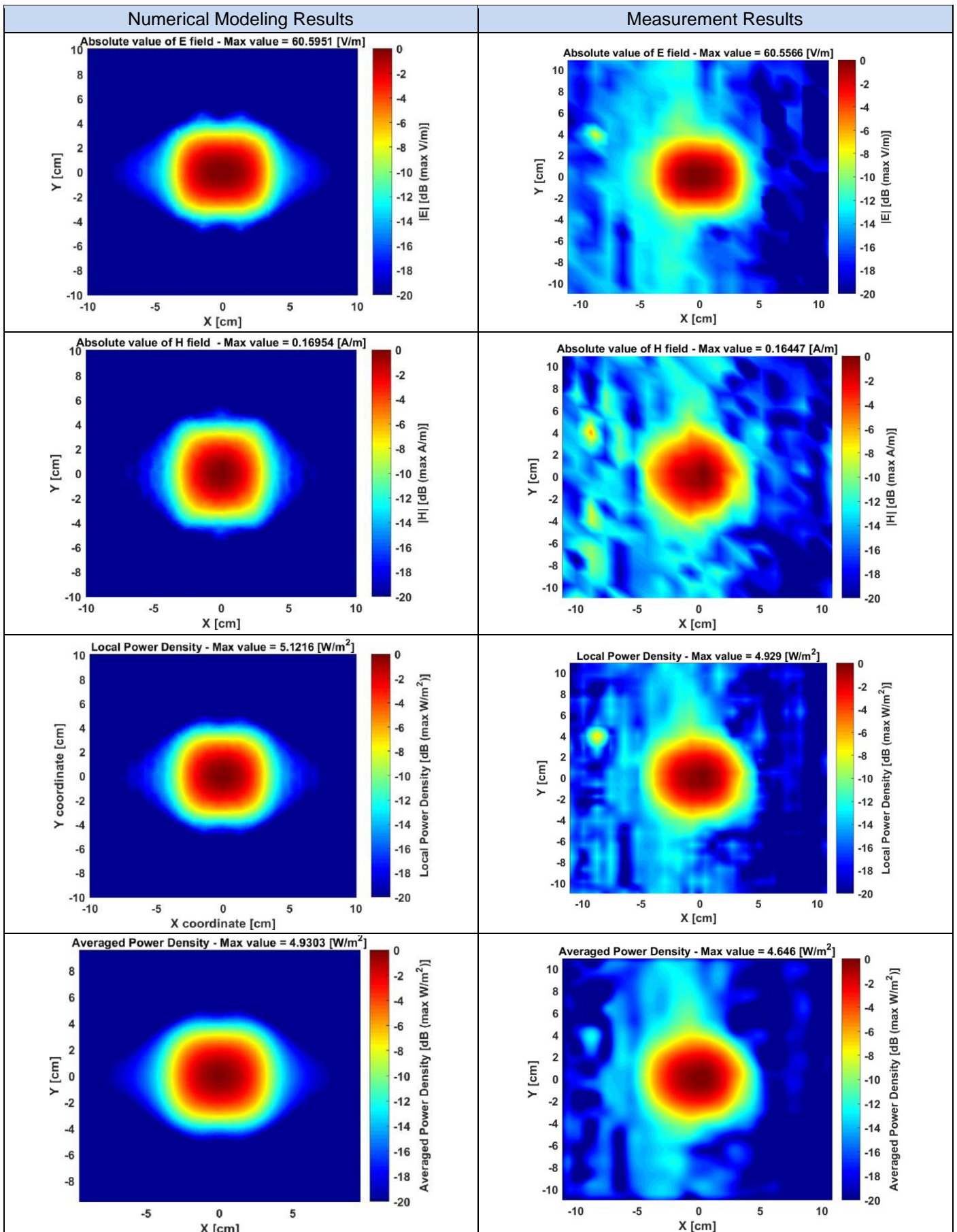
- Probe: EUmmW – SN9538 ; ConvF(1, 1, 1); Calibrated: 2024-05-06;
 - Modulation Compensation:
- Sensor-Surface : 0mm (Fix Surface), z = 2mm
- Electronics: DAE4 Sn1703; Calibrated: 2024-02-13
- Phantom: Cover; Type: SPEAG Phantom Cover
- cDASY6 5G Module v2.4
- Test Date: 2024-11-04

Distance-10mm/Measure Horn reference source (86.9x63.5):

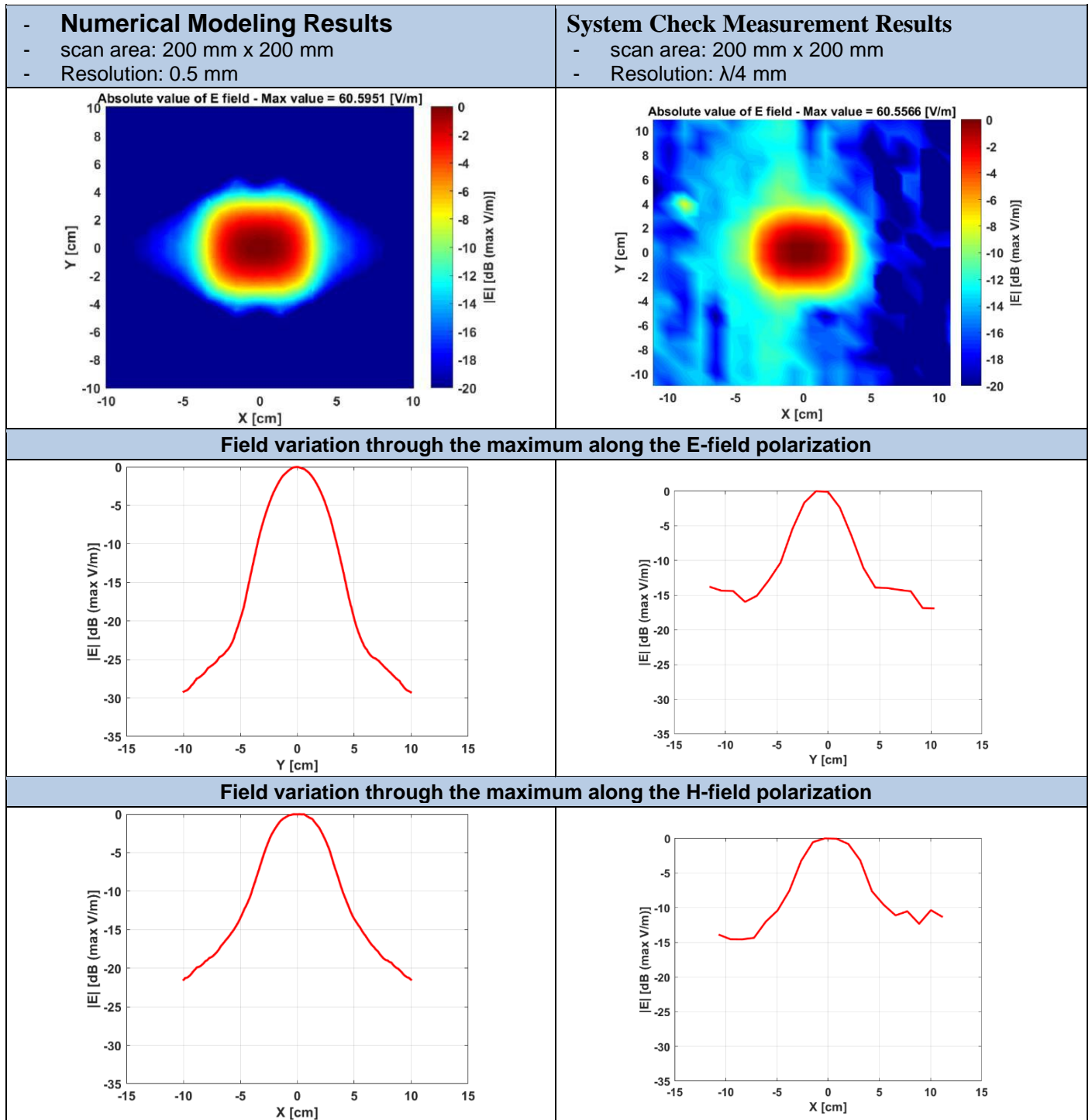
Measurement Resolution = $\lambda/4$ mm

Measurement Scan area = 200 mm x 200 mm

The plots below show the comparison between the Numerical Modeling results and the system check measurement results in terms of E-field, H Field, single point power density and Avg Power density 1cm².



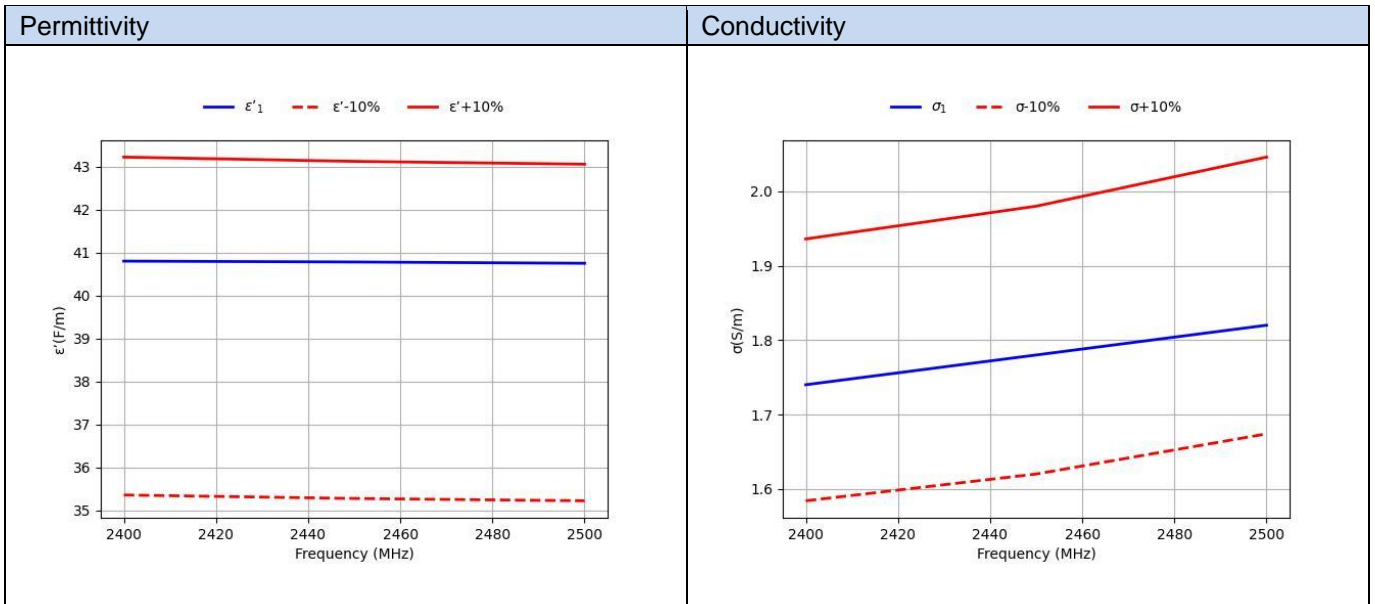
The plots below show the comparison between the numerical modeling and the system check results in terms of normalized E-field distribution and the 1D variation along the two axis of the maximum.



Annex C. TSL Dielectric Parameters

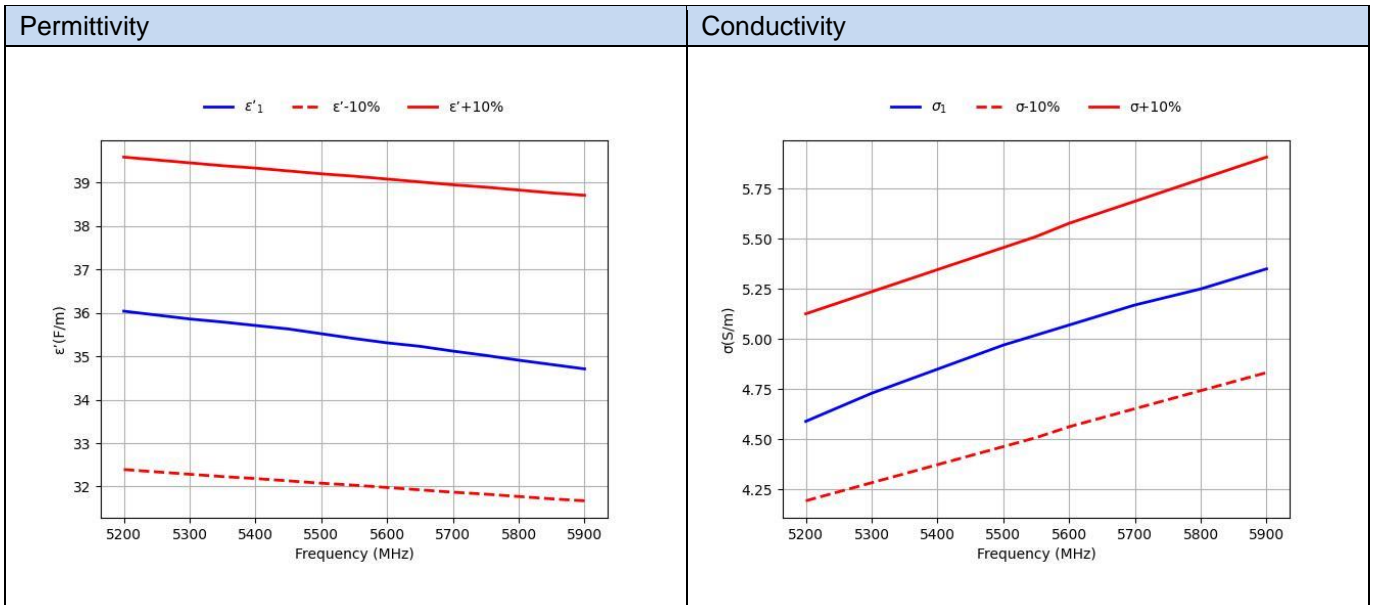
C.1 Head 2450MHz

Freq.(MHz)	Target		Measured 2024-10-28	
	ϵ' (F/m)	σ (S/m)	ϵ' (F/m)	σ (S/m)
2400	39.29	1.76	40.80	1.74
2450	39.20	1.80	40.78	1.78
2500	39.14	1.86	40.75	1.82



C.2 Head 5200MHz-5900MHz

Freq.(MHz)	Target		Measured 2024-10-28	
	ϵ' (F/m)	σ (S/m)	$\epsilon'1$ (F/m)	$\sigma1$ (S/m)
5200	35.99	4.66	36.04	4.59
5250	35.93	4.71	35.95	4.66
5300	35.87	4.76	35.86	4.73
5350	35.81	4.81	35.79	4.79
5400	35.76	4.86	35.71	4.85
5450	35.70	4.91	35.63	4.91
5500	35.64	4.96	35.52	4.97
5550	35.59	5.01	35.41	5.02
5600	35.53	5.07	35.31	5.07
5650	35.47	5.12	35.23	5.12
5700	35.41	5.17	35.12	5.17
5750	35.36	5.22	35.02	5.21
5800	35.30	5.27	34.91	5.25
5850	35.24	5.32	34.81	5.30
5900	35.19	5.37	34.71	5.35



C.3 Head 6000MHz

Freq.(MHz)	Target		Measured 2024-10-28	
	ϵ' (F/m)	σ (S/m)	ϵ' 1(F/m)	σ 1(S/m)
5900	35.19	5.37	34.71	5.35
5950	35.13	5.42	34.63	5.40
6000	35.07	5.48	34.56	5.46
6050	35.01	5.54	34.47	5.52
6100	34.95	5.59	34.39	5.59
6150	34.89	5.65	34.30	5.65
6200	34.83	5.71	34.21	5.72
6250	34.77	5.77	34.12	5.78
6300	34.70	5.83	34.04	5.86
6350	34.64	5.89	33.94	5.94
6400	34.58	5.95	33.85	6.02
6450	34.52	6.01	33.78	6.09
6500	34.46	6.07	33.70	6.16
6550	34.40	6.13	33.60	6.23
6600	34.34	6.19	33.49	6.29
6650	34.29	6.25	33.41	6.35
6700	34.23	6.30	33.33	6.42
6750	34.17	6.36	33.27	6.48
6800	34.11	6.42	33.20	6.52
6850	34.05	6.48	33.12	6.58
6900	33.99	6.53	33.03	6.63
6950	33.94	6.59	32.95	6.70
7000	33.88	6.65	32.84	6.76
7050	33.82	6.71	32.75	6.82
7100	33.76	6.77	32.66	6.87
7150	33.70	6.83	32.60	6.92
7200	33.64	6.89	32.53	6.98

