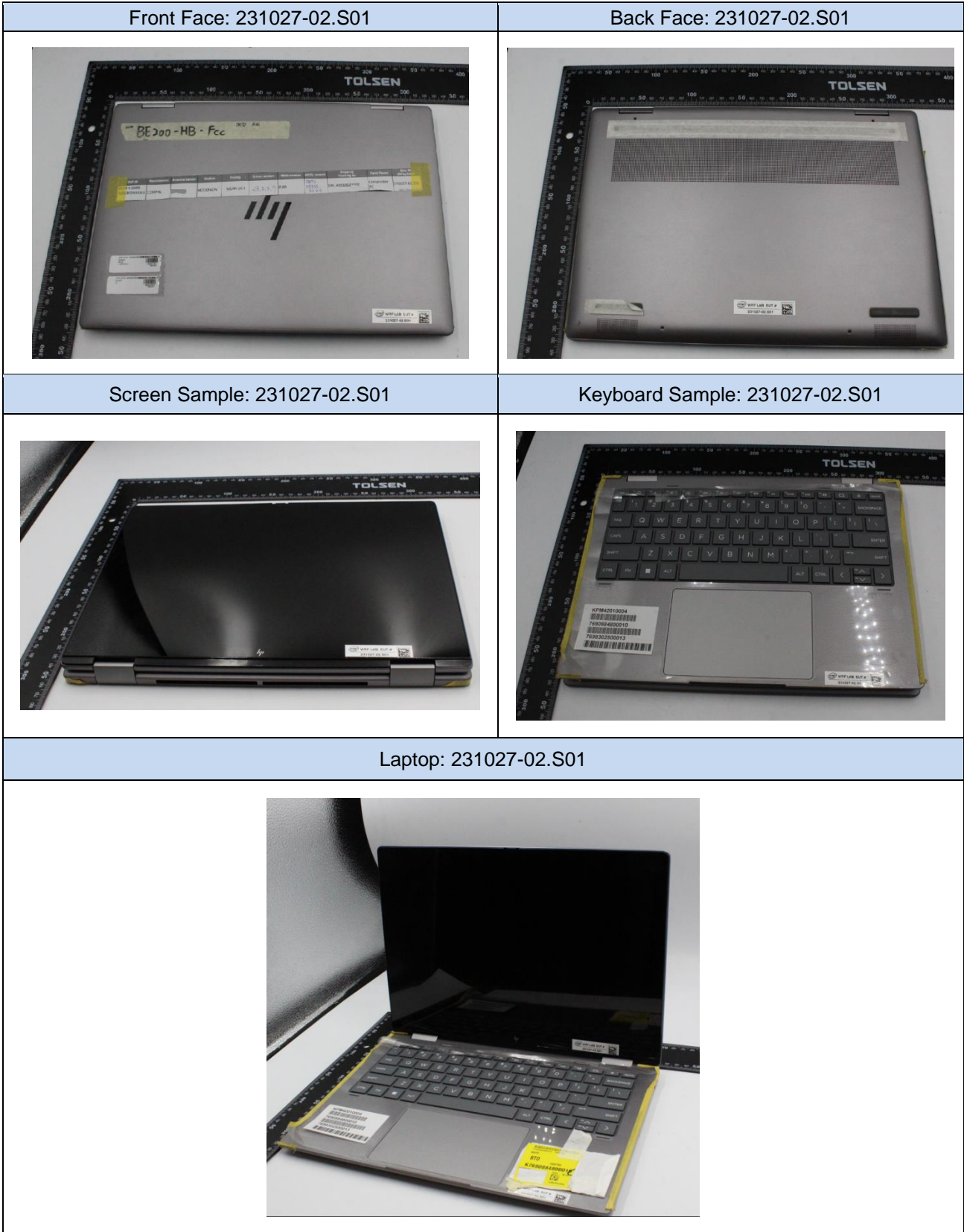
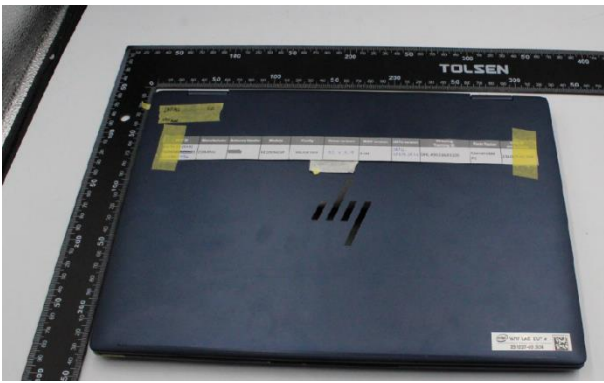


Annex F. Photographs

F.1 Test Sample



Front Face: 231027-02.S04



Back Face: 231027-02.S04



Screen Sample: 231027-02.S04




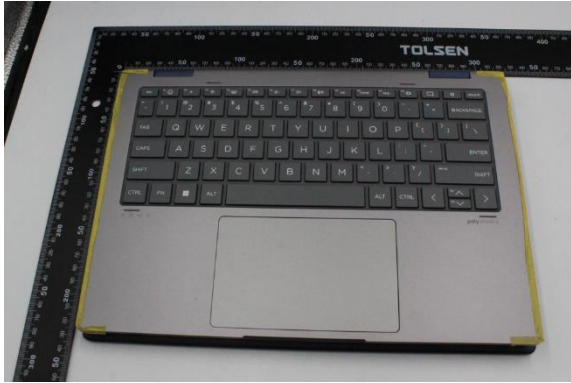



Keyboard Sample: 231027-02.S04



Laptop: 231027-02.S04



<p>Front Face: 231027-02.S05</p>	<p>Back Face: 231027-02.S05</p>
	
<p>Screen Sample: 231027-02.S05</p>	<p>Keyboard Sample: 231027-02.S05</p>
	
<p>Laptop: 231027-02.S05</p>	
	

Front Face: 231027-02.S06 Back Face: 231027-02.S06



Screen Sample: 231027-02.S06 Keyboard Sample: 231027-02.S06



Laptop: 231027-02.S06

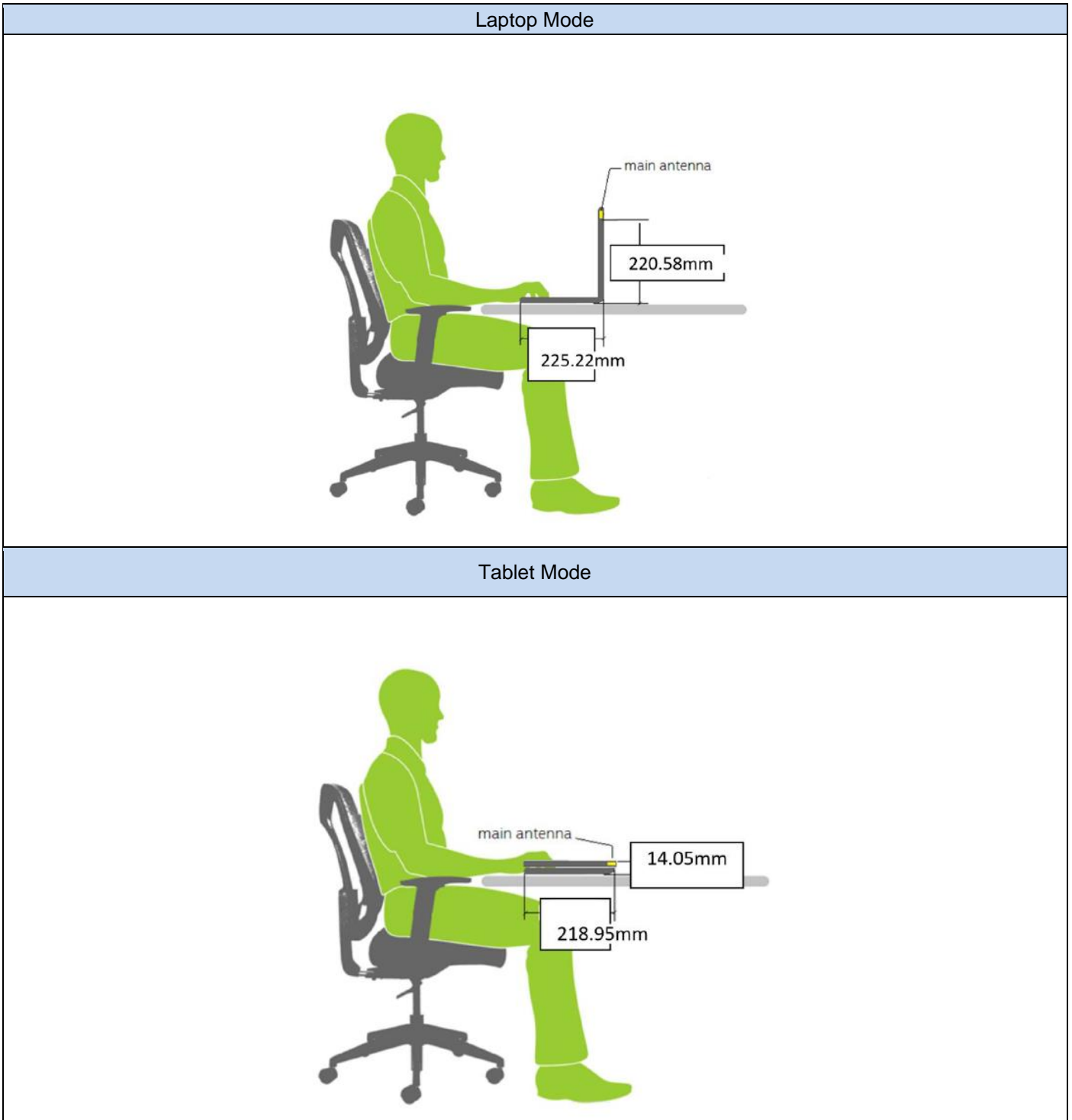


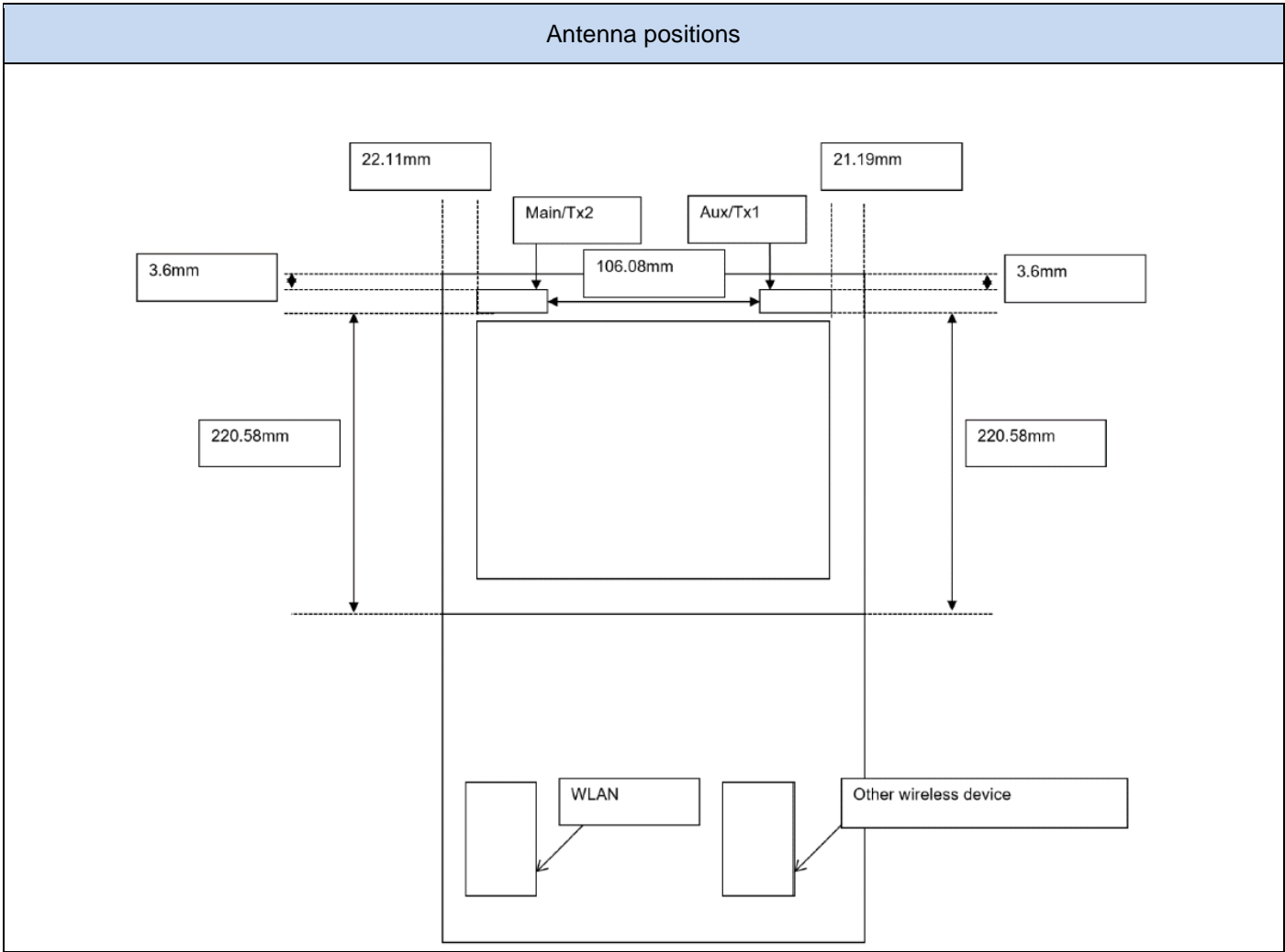
F.2 Test positions

Top edge



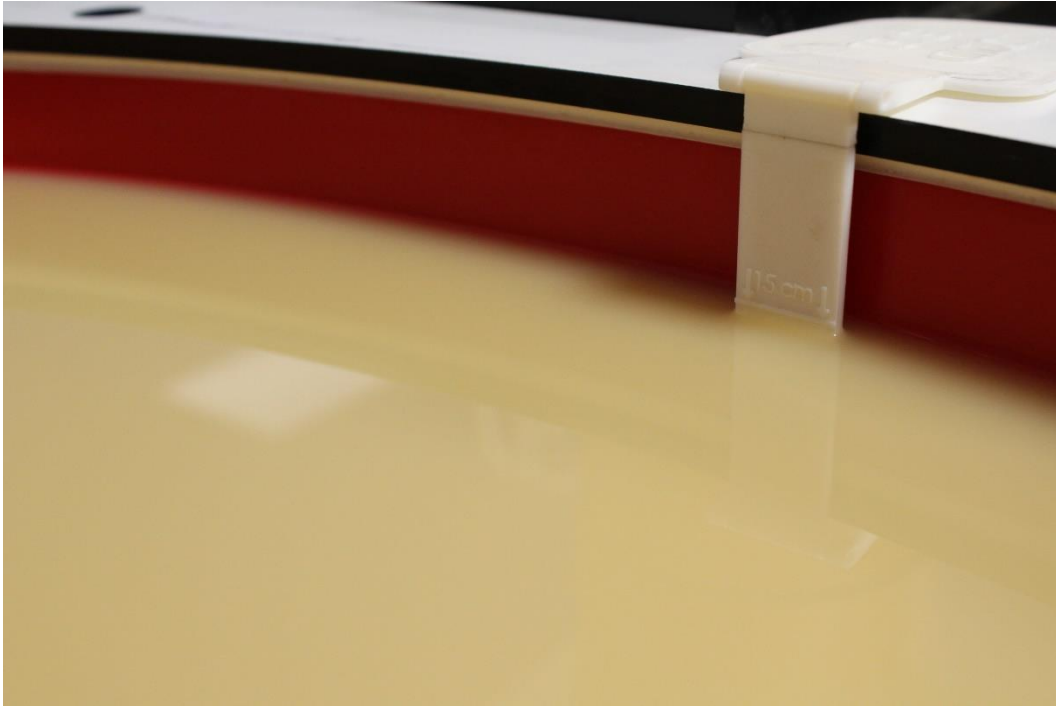
F.3 Antenna host platform location and adjacent edge positions relative to the body





F.4 Phantom liquid level during measurements

ELI phantom Head liquid SAR Dasy SPEAG MBBL600-6000V6 Batch -230426-01



End of the report

This page is intentionally left blank and marks the last page of the test report.