

Regulatory WLAN Antenna Information

Platform information										
Brand	ODM	RMN	Intel platform (ex: Yes, No or NA)	Platform type (ex: regular NB, convertible PC, AIO...etc)	*SAR minimum separation (mm)					
HP Inc.	Compal	TPN-C176	Yes	Regular NB	5.75					
****Please fill in exact product model name and make sure the model name is visible on product cover or any parts for end users recognize for authority inspection.										
Antenna information										
Vendor		Type	Antenna Part number (Main/Tx2)				Antenna Part number (Aux/Tx1)			
HONG-BO		PIFA	DC33002X900 (260-24444)				DC33002X910 (260-24445)			
Peak gain w/ cable loss (dBi)*										
	2.4GHz 2400-2483.5 MHz	5.2GHz 5150-5250MHz	5.3GHz 5250-5350MHz	5.6GHz 5470-5725MHz	5.8GHz 5725-5850MHz	5.9GHz 5850-5895MHz	6.2GHz 5925-6425MHz	6.5GHz 6425-6525MHz	6.7GHz 6525-6875MHz	7.0 GHz 6875-7125MHz
Main	-0.57	0.66	0.66	-1.18	-1.23	-1.07	0.75	0.22	0.36	0.76
Aux	0.28	-0.75	-0.07	-0.25	-1.63	-1.48	0.45	0.18	0.18	0.49
Module Information										
Model	Form factor and suffixes									
AX211NGW	Intel Garfield Peak 2 AX211 Wi-Fi 6e +Bluetooth 5.2 M.2 2230 160MHz CNVi WW WLAN									
BE200NGW	Intel Gale Peak 2 BE200 M.2 2230 Wi-Fi 7 +Bluetooth 5.4 non-vPro WW WLAN									

Address of the antenna manufacturer:

4F., No. 143, Xihu 1st Rd., Neihu Dist., Taipei City 114 , Taiwan (R.O.C.)

Table of contents

1. Setup photo

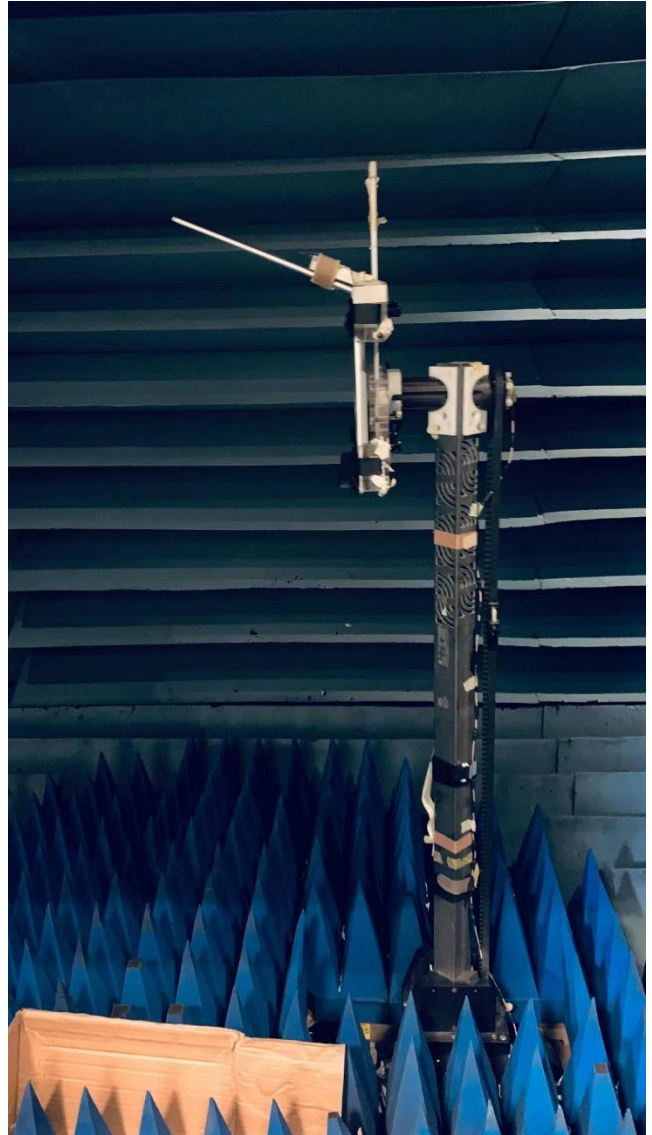
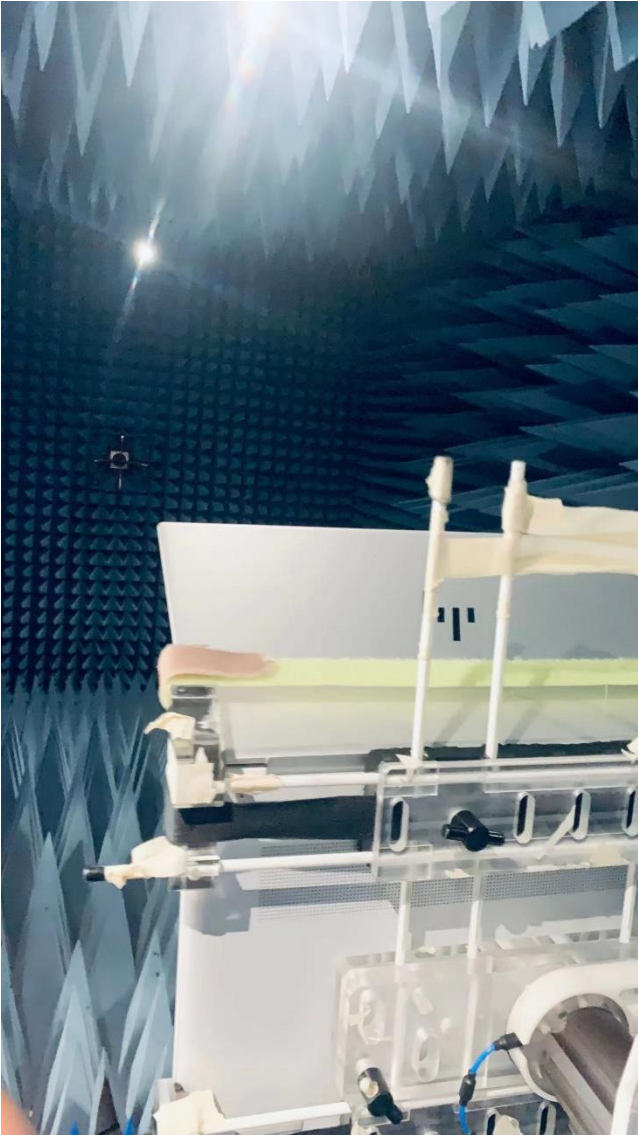
[Section 1. Dimensioned Photos or Drawings of Antennas](#)

[Section 2. Antenna Host Platform Location Information](#)

[Section 3. Antenna dimensional information for SAR evaluation](#)

[Section 4. Diagram Example of Co-Location Antenna Separation](#)

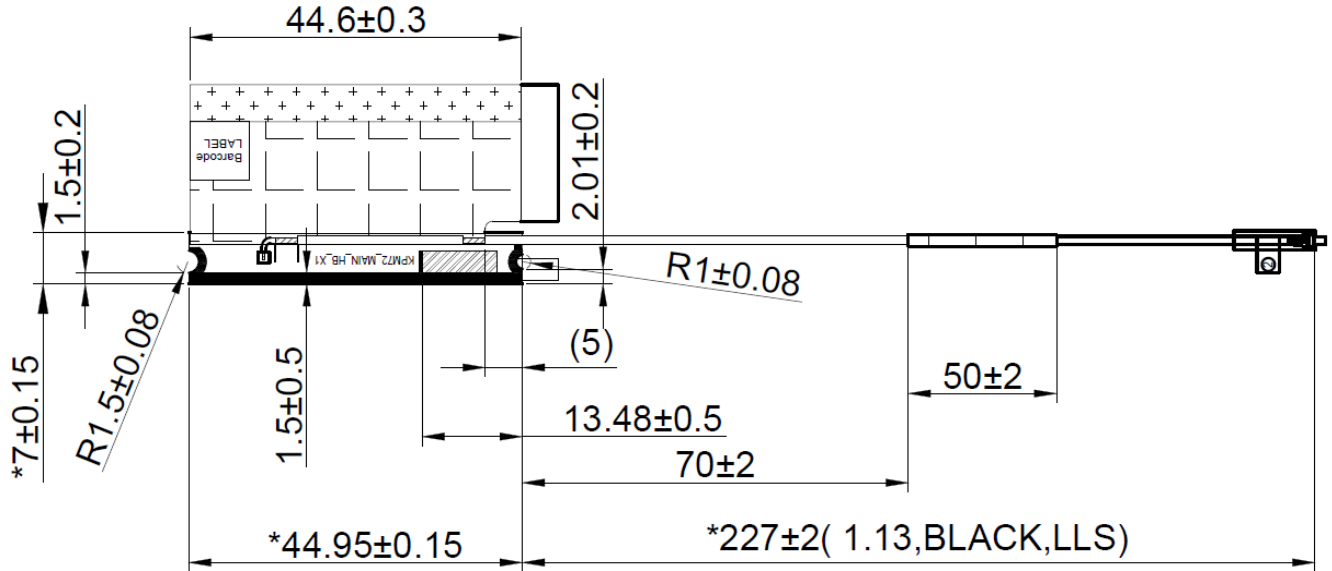
1. Setup photo



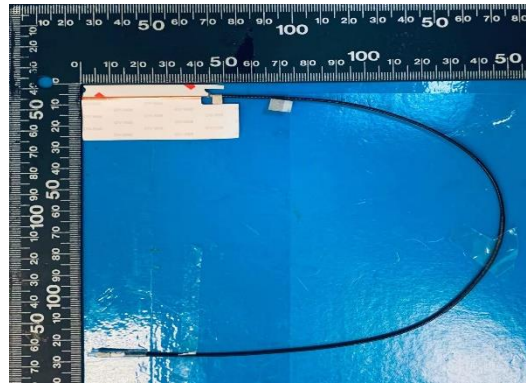
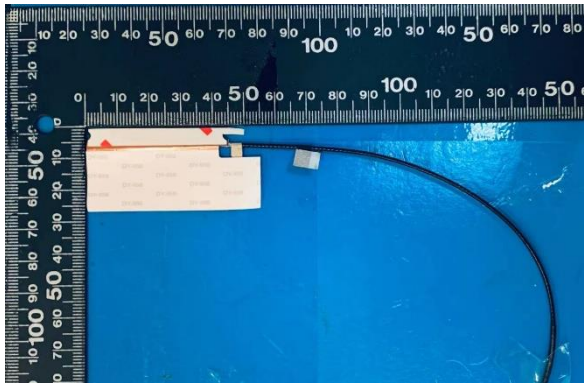
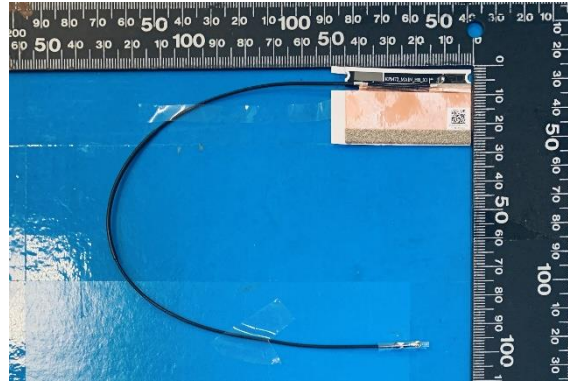
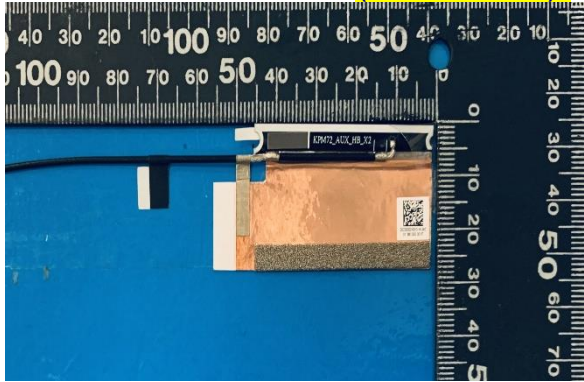
Section 1. Dimensioned Photos and Drawings of Antennas

Include the dimensioned photo and drawing of Main antenna here.

Main Antenna Drawing:



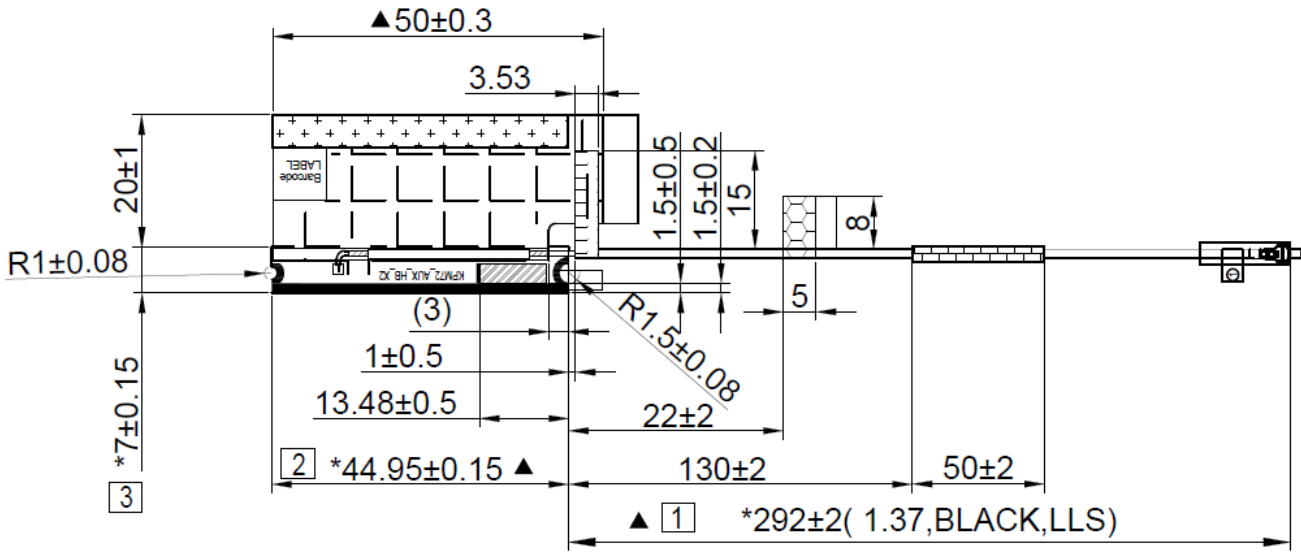
Main Antenna Photo (Front/Back):



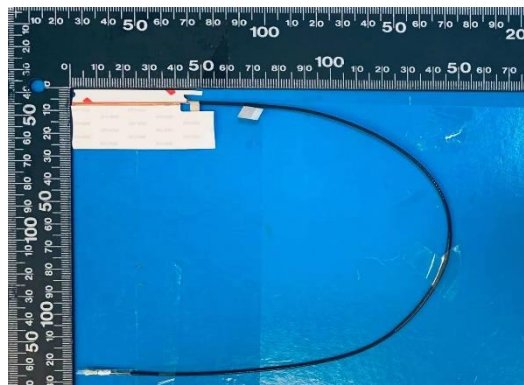
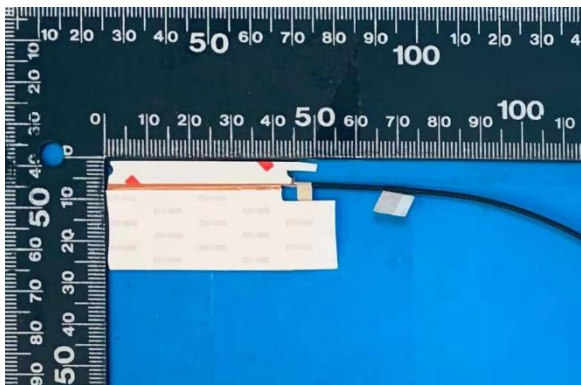
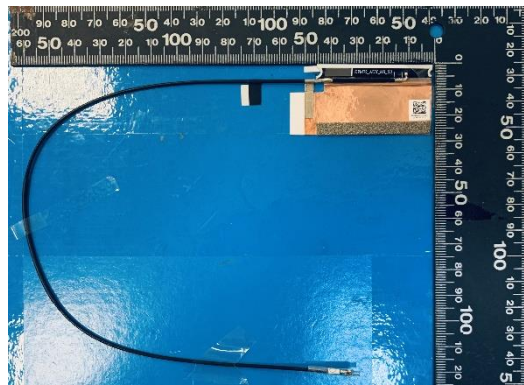
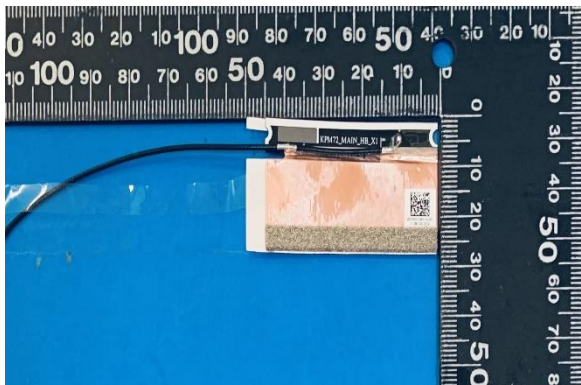
Note: antenna photo should include L type ruler

Include the dimensioned photo and drawing of Aux antenna here.

Aux Antenna Drawing:



Aux Antenna Photo (Front/Back):



Note: antenna photo should include L type ruler

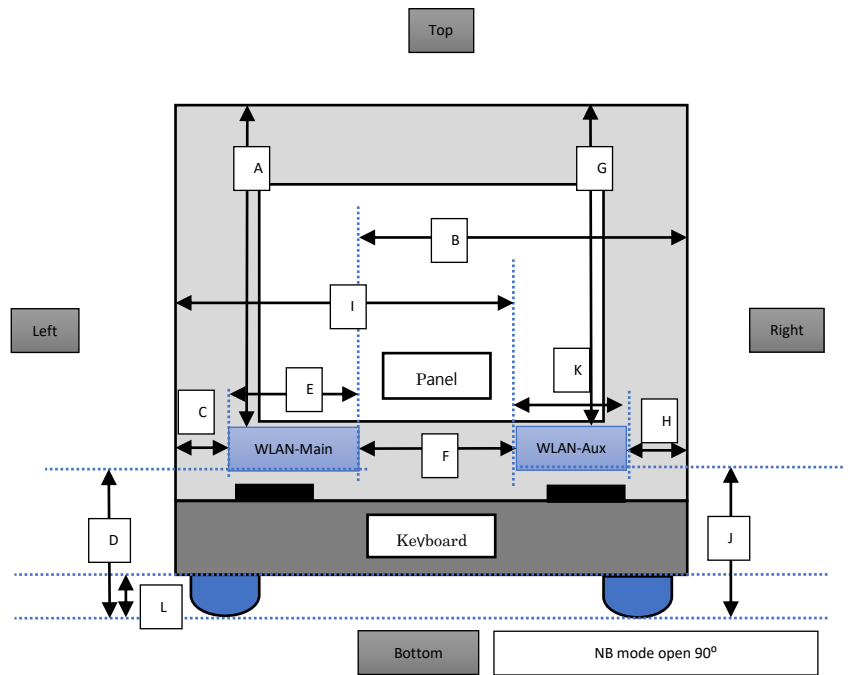
Section 2. Antenna Host Platform Location Information

Include a **dimensioned photo(s) or dimensioned drawing(s)** of Main and Aux antenna placements (measurements are not required for receive-only antenna).

Any antenna that transmits must show dimensions to bottom of laptop. Provide a description of the materials that are used for supporting or surrounding transmit antennas; for example, non-conductive plastics vs. conductive coated plastic or metallic materials.

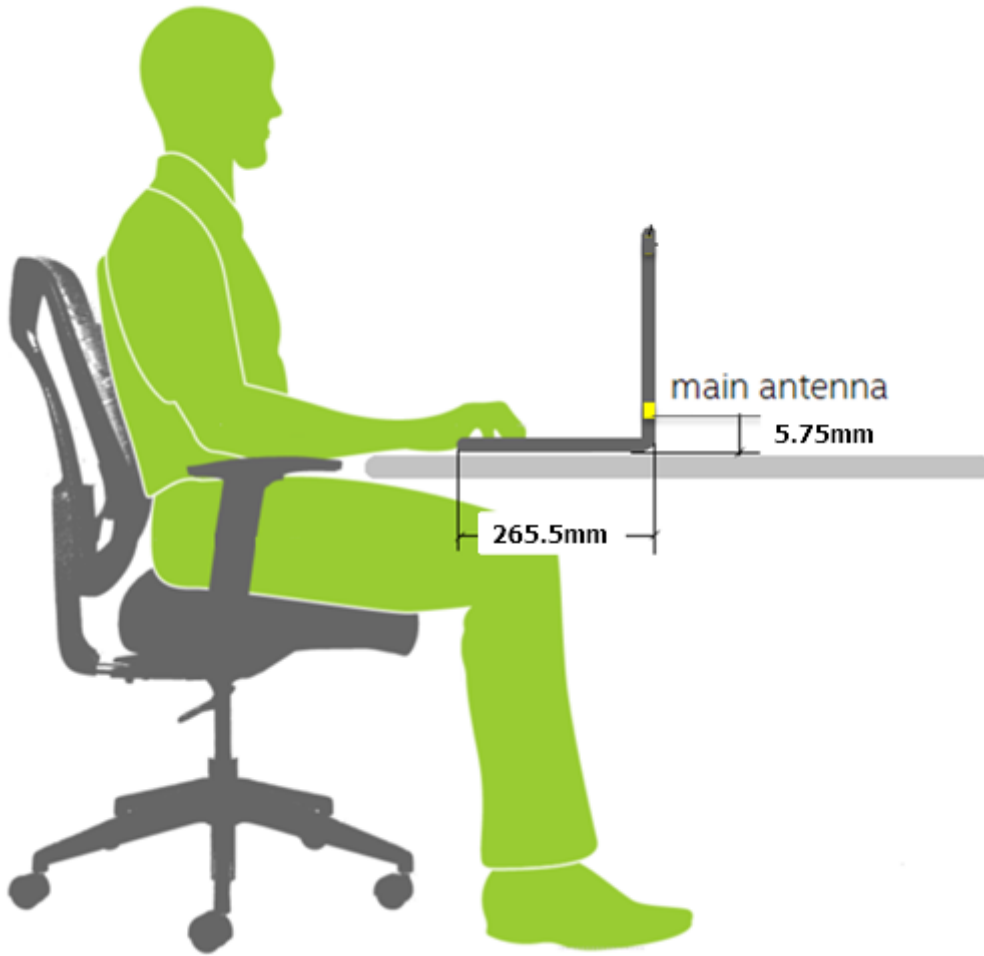
Minimum Separation Distance

Item	Antenna	Position	Distance (mm)
A	WLAN-Main	to Top	247
B	WLAN-Main	to Right	98
C	WLAN-Main	to Left	252
D	WLAN-Main	to Bottom	5.75
E	WLAN-Main	Main Antenna Length	45
F	Main-Aux	Main to Aux	14.5
G	WLAN-Aux	to Top	247
H	WLAN-Aux	to Right	158
I	WLAN-Aux	to Left	191
J	WLAN-Aux	to Bottom	5.75
K	WLAN-Aux	Aux Antenna Length	45
L	NB	Bumper thickness	1.5



Section 3. Antenna dimensional information for SAR evaluation

Include a **dimensioned photo(s) or dimensioned drawing(s)** showing the distance (mm) between the transmit antennas and the user. For notebook/laptop hosts show lapheld position (example below). For tablet hosts show all orientations including lapheld, primary & secondary portrait, primary & secondary landscape positions. Include a description of any proximity sensors or power throttling implementations that limit or exclude use of any host orientation.



Section 4. Diagram Example of Co-Location Antenna Separation

Include a **dimensioned photo or dimensioned drawing** showing the distance (mm) between **all WLAN transmit antennas** and other co-located radiator transmit antenna such as Bluetooth, WWAN,..

(Note: Due to the evolving rules regarding co-location, each platform will need to be reviewed on a case by case basis)

Minimum Separation Distance			
Item	Antenna	Position	Distance (mm)
A	WLAN-Main	to Top	247
B	WLAN-Main	to Right	98
C	WLAN-Main	to Left	252
D	WLAN-Main	to Bottom	5.75
E	WLAN-Main	Main Antenna Length	45
F	Main-Aux	Main to Aux	14.5
G	WLAN-Aux	to Top	247
H	WLAN-Aux	to Right	158
I	WLAN-Aux	to Left	191
J	WLAN-Aux	to Bottom	5.75
K	WLAN-Aux	Aux Antenna Length	45
L	NB	Bumper thickness	1.5

