

# ANTENNA INFORMATION

Antenna manufacturer	WIESON
Address	15F., No.237, Sec.1, Datong Rd., Xizhi Dist., New Taipei City, Taiwan
Antenna Part number	Main/Aux: ARY121-0009-002-H0
Antenna type	Dipole

Test Location	JUST RF Testing Lab
Address	No. 99, Anzhong Road, Xindian District, New Taipei City, Taiwan
Test Personnel	Peng Ning Yen
Testing date	2023/7/3

## Antenna Peak gain w/ cable loss (dBi)\*

	<b>2.4GHz</b> 2400-2483.5 MHz	<b>5.2GHz</b> 5150-5250MHz	<b>5.3GHz</b> 5250-5350MHz	<b>5.6GHz</b> 5470-5725MHz	<b>5.8GHz</b> 5725-5850MHz	<b>5.9GHz</b> 5850-5895MHz	<b>6.2GHz</b> 5925-6425MHz	<b>6.5GHz</b> 6425-6525MHz	<b>6.7GHz</b> 6525-6875MHz	<b>7.0 GHz</b> 6875-7125MHz
Main/ Aux	2.95	4.03	4.11	5.15	5.13	4.45	5.02	4.71	4.49	4.96

## Cable Assembly Part Number and Information

	<b>Cable PN</b>	<b>Cable length(cm)</b>	<b>Cable diameter(mm)</b>	<b>Impedance(ohm)</b>	<b>Connector type</b>
Main/ Aux	AR9851-0009-005-H0	12±0.5	1.13	50	SMA to MHF Plug

# Table of Contents

Cover page.....	1
<b>1. Document Revision History.....</b>	<b>3</b>
<b>2. Test &amp; System Description</b>	
2.1 Measurement Method and System.....	4
2.2 Test setup.....	4
2.3 Equipment list.....	5
<b>3. Radiation characteristics of antenna loaded in Host Platform.....</b>	<b>6</b>
<b>Annex A. Photographs</b>	
A.1 Setup Photo.....	9
A.2 Test sample.....	10

**1. Document Revision History**

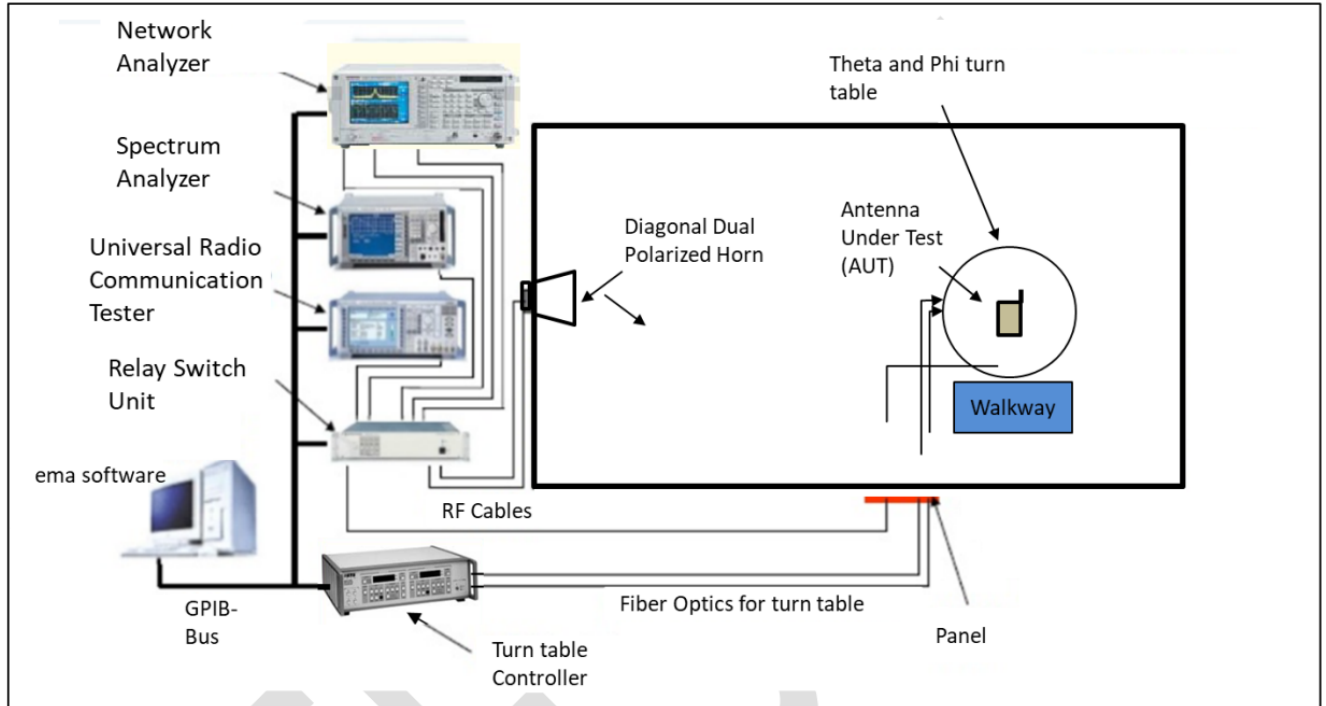
<b>Revision #</b>	<b>Revision Details</b>	<b>Issued Date</b>
Rev.01	First Issue	2023/07/24
Rev.02	Add test location	2023/08/23
Rev.03	Add test date	2023/09/25
Rev.04	Add name of Test Personnel	2023/10/02

## 2. Test & System Description

### 2.1 Measurement Method and System

Measurement was performed with a Full Anechoic Chamber

### 2.2 Test setup



## 2.4 Equipment list

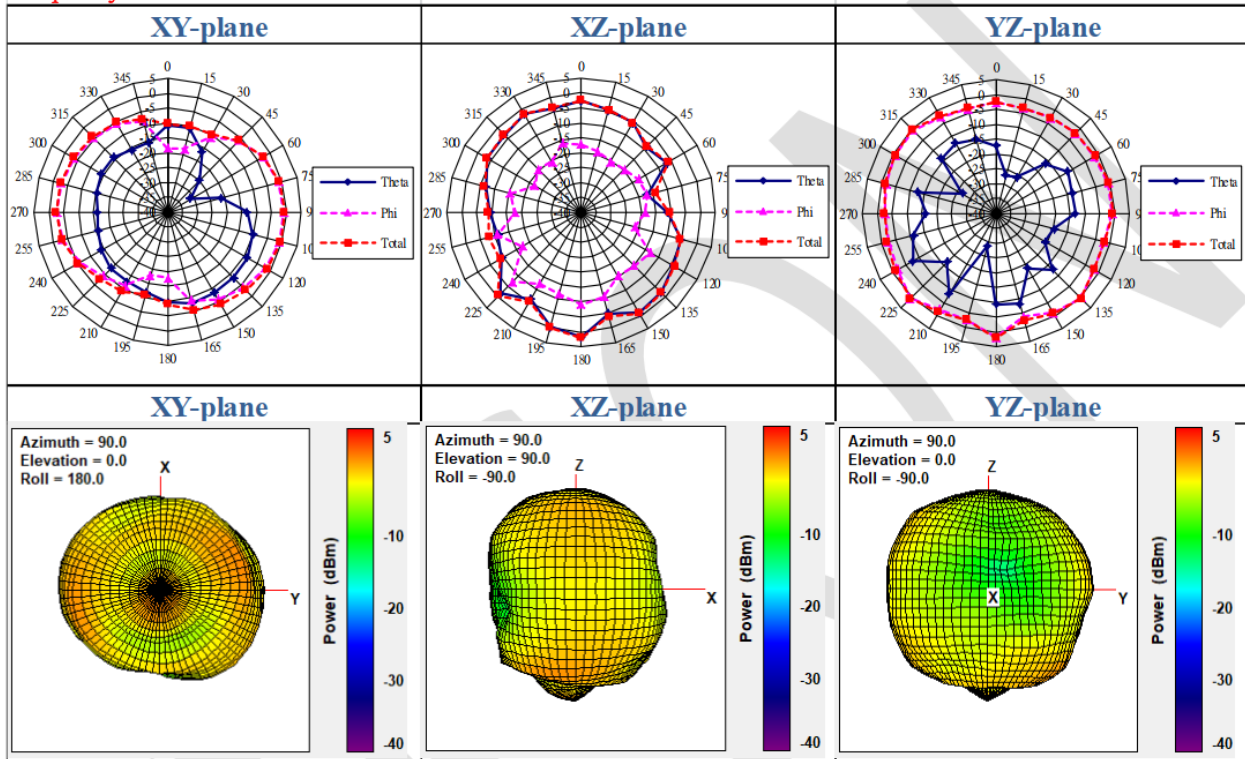
Device	Type/Model	Serial#	Manufacturer	Cal. Date	Cal. Due Date
Anechoic Chamber	SpaceSacer 26H	3100508-182-00007	ETS-Lindqren	30-Jun-23	30-Jun-24
Dual Polarized Diagonal Horn Antenna	3164	3164-03	ETS-Lindqren	30-Jun-23	30-Jun-24
Spectrum Analyzer(SA)	FSV – FSP	3100505-19-00011	RCHDE&SCHWARZ	24-Mar-23	24-Sep-26
Network Analyzer(NA)	ZNB4	-	RCHDE&SCHWARZ	24-Mar-23	24-Sep-26
Network Analyzer(NA)	R3767CG	130101611	ADVANTEST	24-Mar-23	24-Sep-26
Network Analyzer(NA)	C4209	101548/102977	TS RF Instruments Co., Ltd	24-Mar-23	24-Sep-26
Universal radicomunication tester	CMW500 – CMU200	101548/102977	RCHDE&SCHWARZ	28-May-23	28-Nov-26
Turn table Controller	EMCO 2090	23525	ETS(EMCO)	N/A	N/A
Slot Switch(SW)	Aqilent 3499B	3100508-041-00001	Aqilent	N/A	N/A
Power Amplifier(PA)	ZVE-8G+	SN427201705	PLANAR MONOLITHICS	28-May-23	28-Nov-26
Low-noise Amplifier(LNA)	ZFL-500	3100504-27-00014	MInI-Clrccuits	28-May-23	28-Nov-26

### 3 Radiation characteristics of antenna loaded in Host Platform

#### Main/Auxiliary Antenna

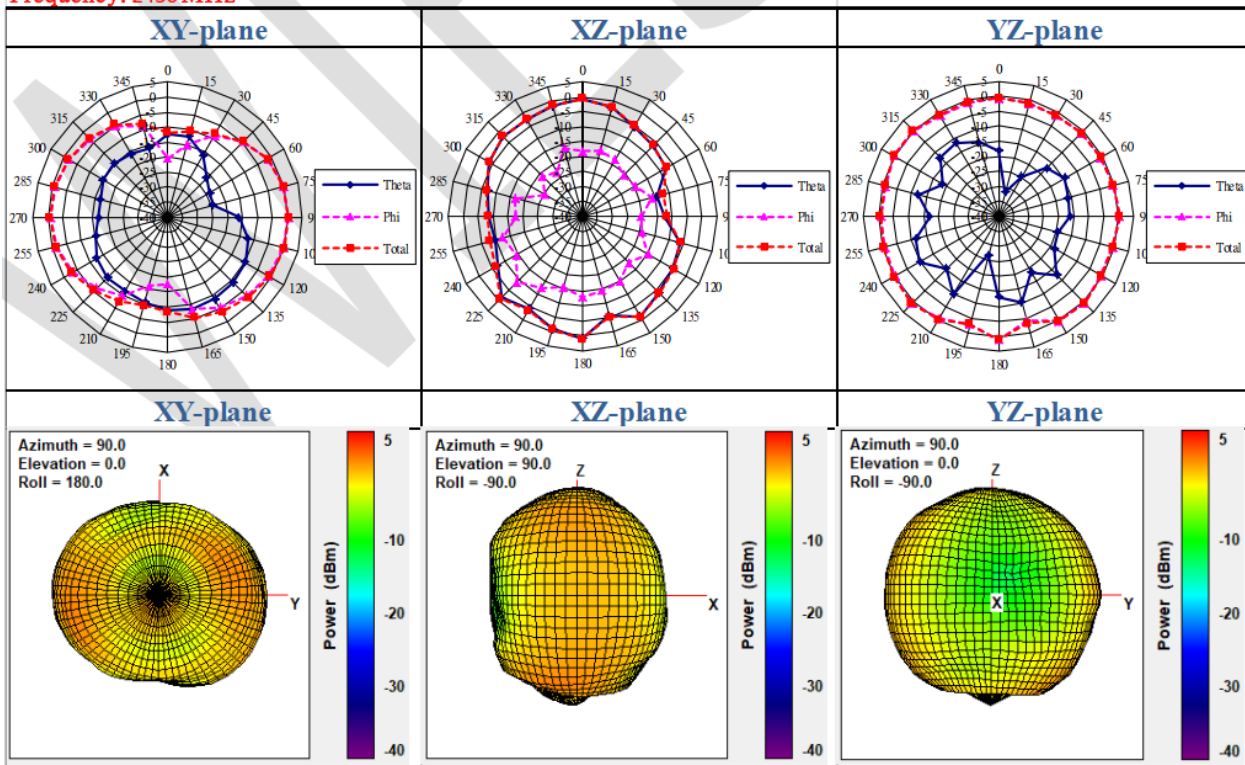
Antenna 3D Radiation Pattern- 2400 MHz

Frequency: 2400 MHz



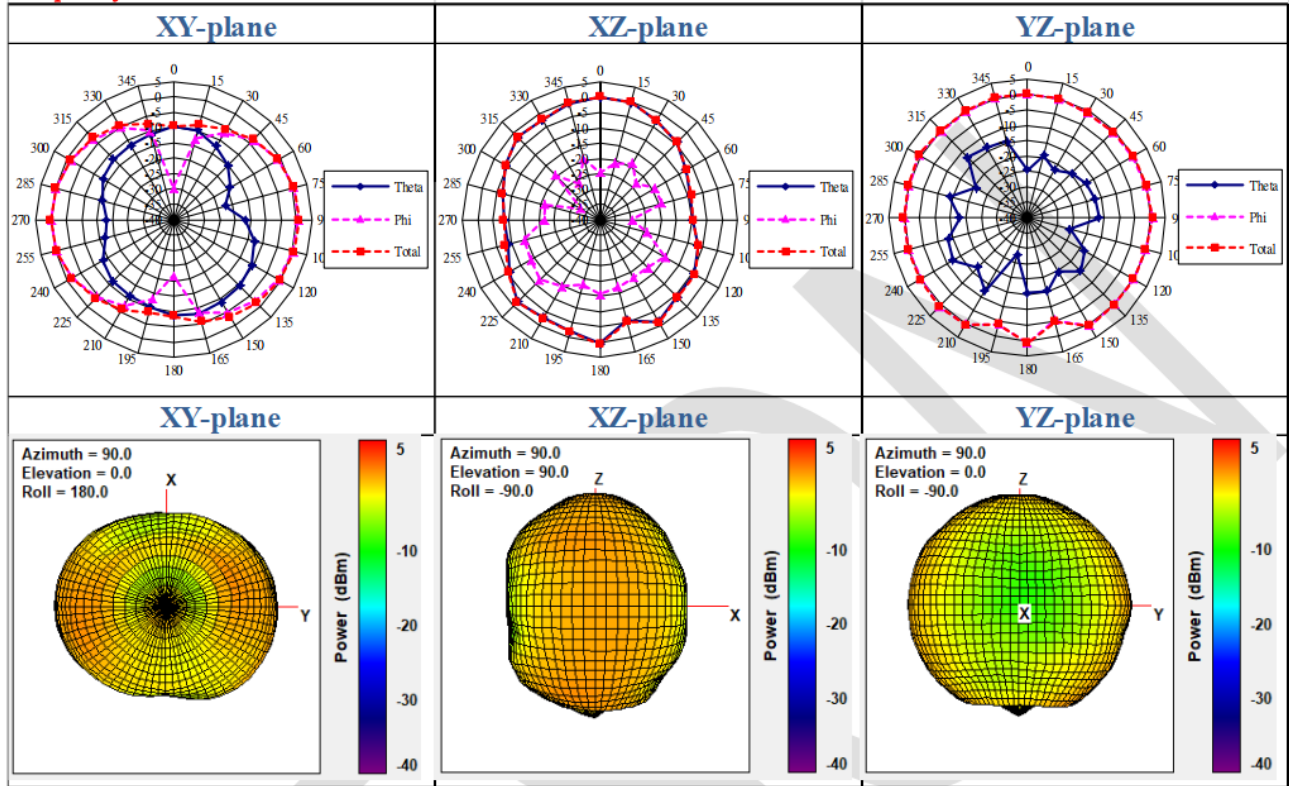
Antenna 3D Radiation Pattern- 2450 MHz

Frequency: 2450 MHz



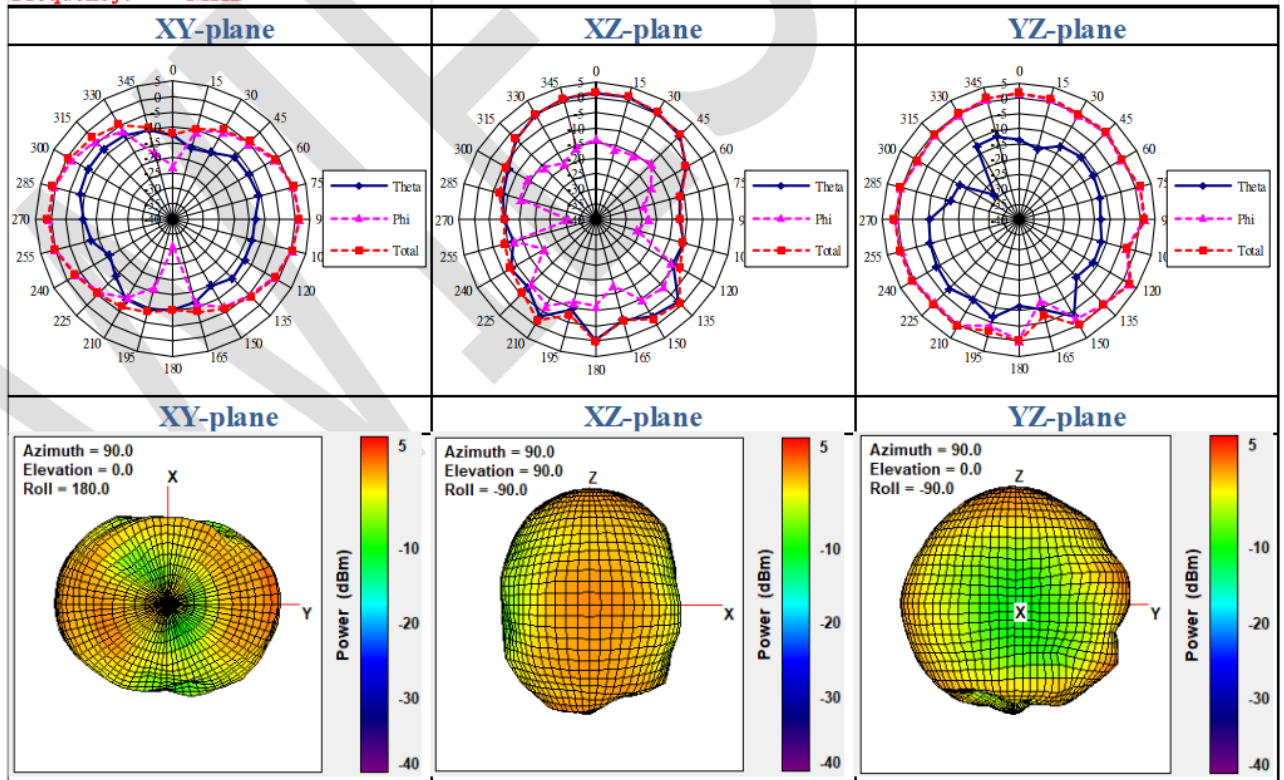
### Antenna 3D Radiation Pattern- 2500 MHz

Frequency: 2500 MHz

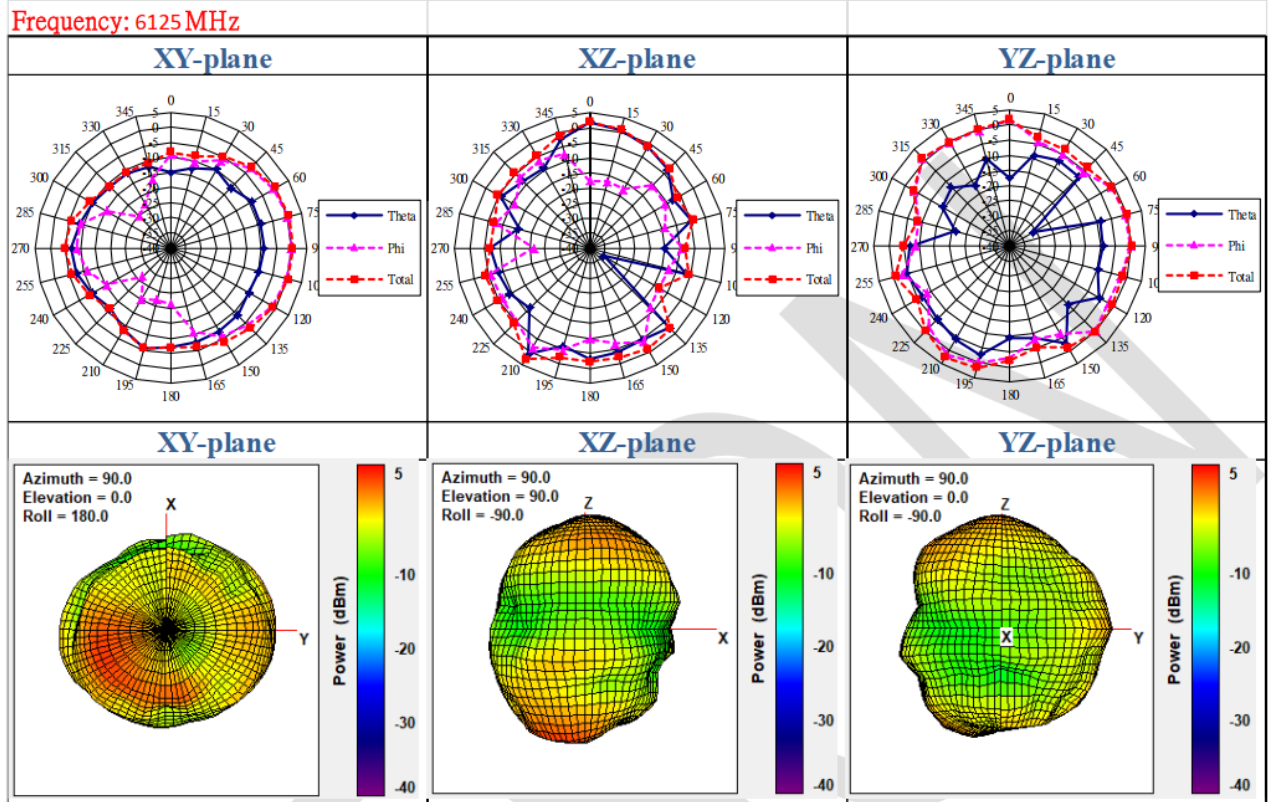


### Antenna 3D Radiation Pattern- 5150 MHz

Frequency: 5150 MHz



### Antenna 3D Radiation Pattern- 6125 MHz



### Antenna 3D Radiation Pattern- 7125 MHz

