


# Annex F. Photographs


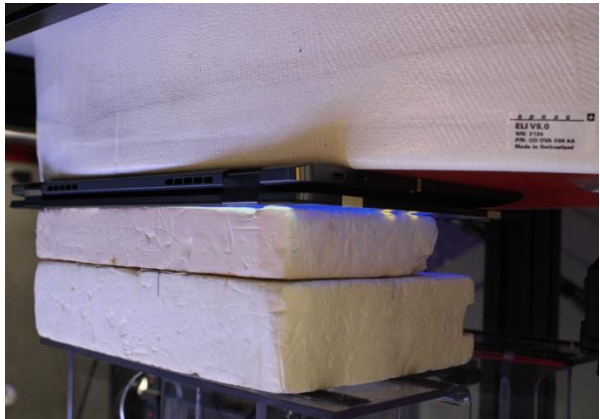
## F.1 Test Sample

<p>Front Face: 231106-01.S01</p>	<p>Back Face: 231106-01.S01</p>
	
<p>Screen Sample: 231106-01.S01</p>	<p>Keyboard Sample: 231106-01.S01</p>
	
<p>Laptop: 231106-01.S01</p>	
	

## F.2 Test positions

Front Face: 231106-01.S02	Back Face: 231106-01.S02
	
Screen Sample: 231106-01.S02	Keyboard Sample: 231106-01.S02
	
Laptop: 231106-01.S02	
	

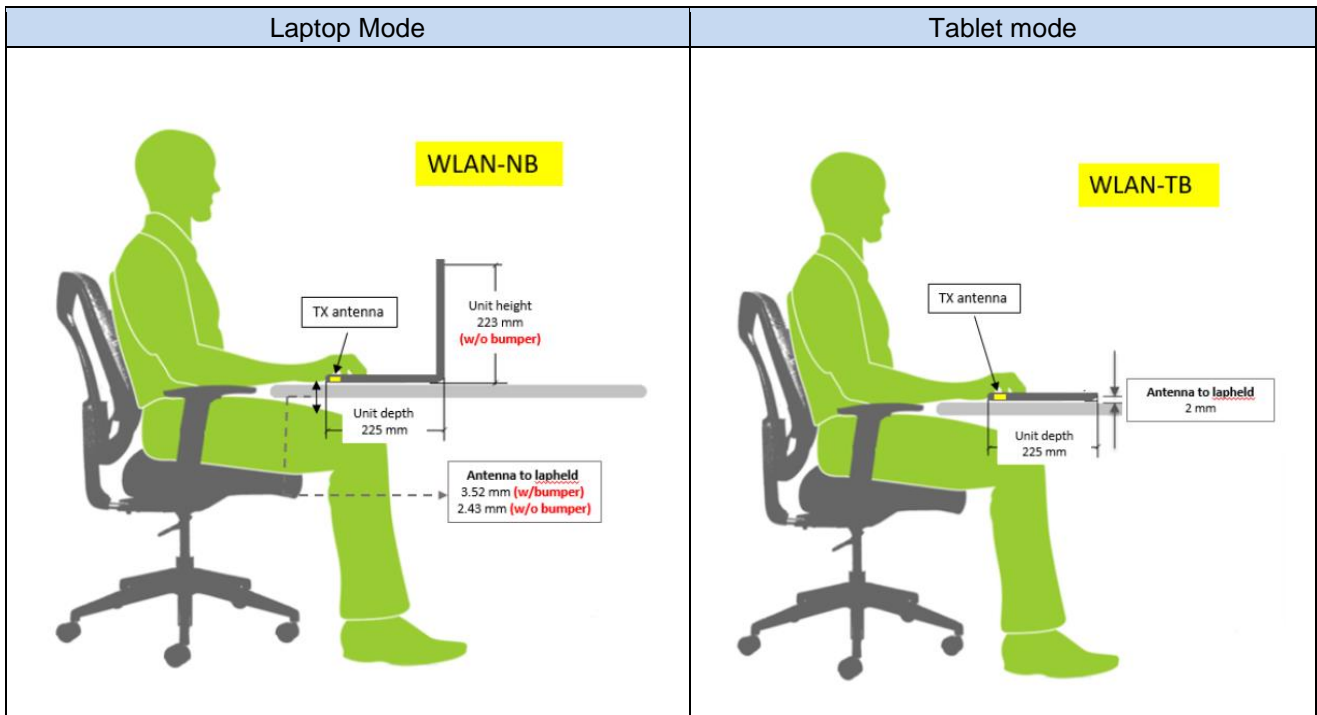
### F.3 Test positions

Top edge	Back face
	

### Laptop

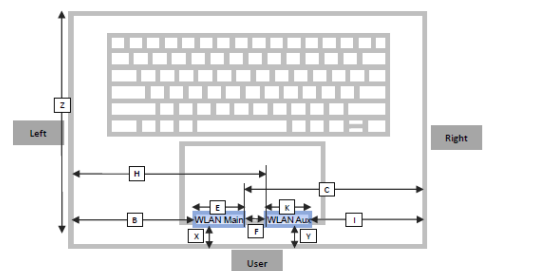
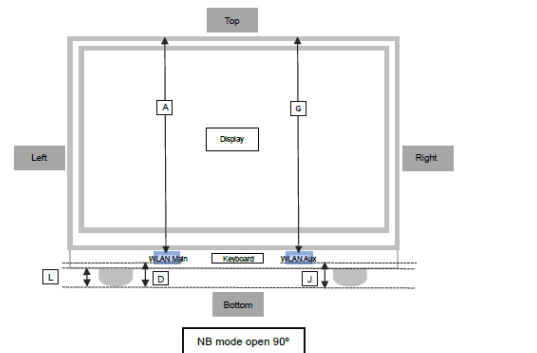


### F.4 Antenna host platform location and adjacent edge positions relative to the body

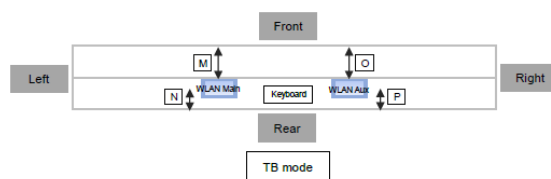


#### Antenna positions

Minimum Separation Distance			
Item	Antenna	Position	Distance (mm)
A	WLAN-Main	To top	320
B	WLAN-Main	To left	98
C	WLAN-Main	To right	177
D	WLAN-Main	To bottom	8
E	WLAN-Main	Main antenna length	45
F	Main-Aux	Main to Aux	45
G	WLAN-Aux	To top	320
H	WLAN-Aux	To left	176
I	WLAN-Aux	To right	103
J	WLAN-Aux	To bottom	8
K	WLAN-Aux	Aux antenna length	45
L	NB	Bumper thickness	3
X	WLAN-Main	To user	17
Y	WLAN-Aux	To user	17
Z	NB	Keyboard depth	210

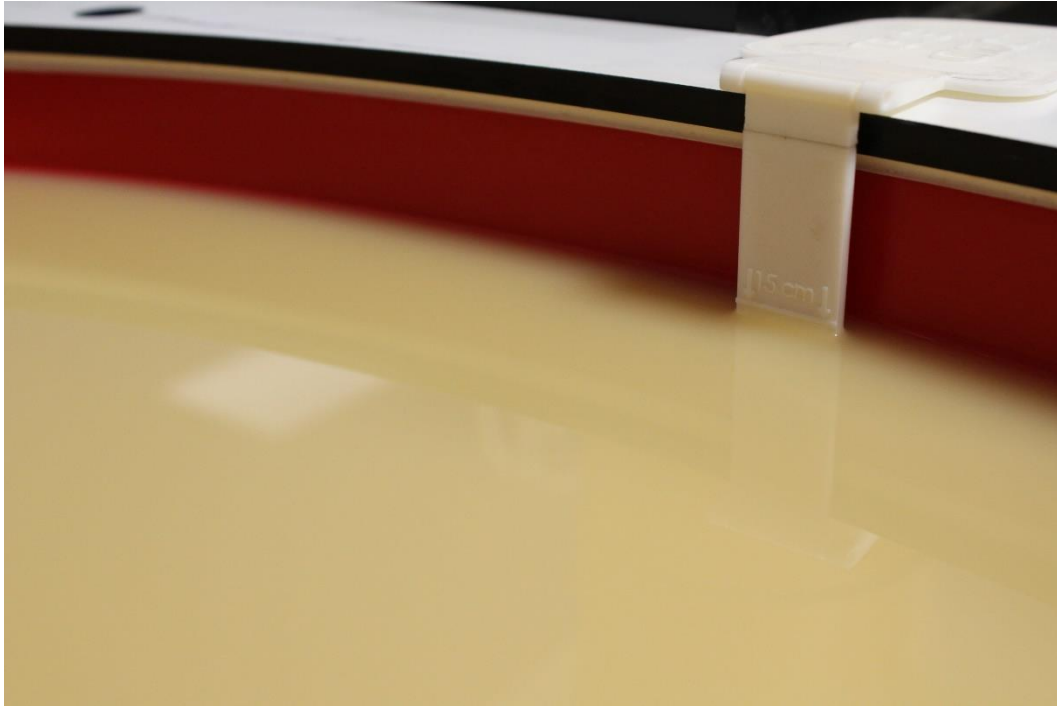


Minimum Separation Distance			
Item	Antenna	Position	Distance (mm)
M	WLAN-Main	To front	5
N	WLAN-Main	To rear	2.5
O	WLAN-Aux	To front	5
P	WLAN-Aux	To rear	2.5



### F.5 Phantom liquid level during measurements

ELI phantom Head liquid SAR Dasy SPEAG MBBL600-6000V6 Batch -230426-01



**End of the report**

**This page is intentionally left blank and marks the last page of the test report.**