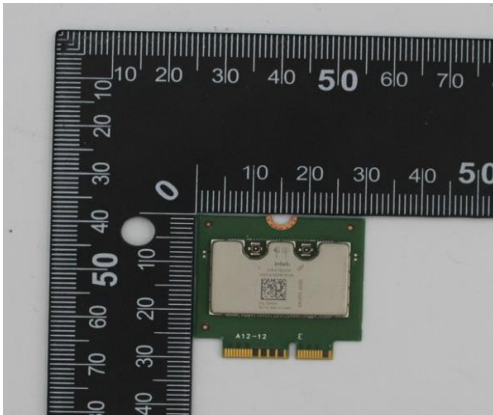


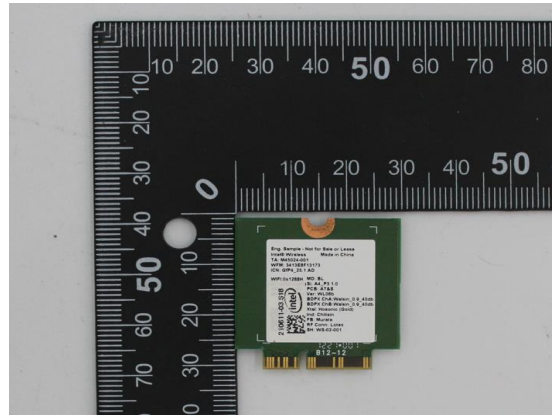
# Annex F. Photographs

## F.1 Test Sample

NGW Module Front : 210611-03. S18



NGW Module Back: 210611-03. S18




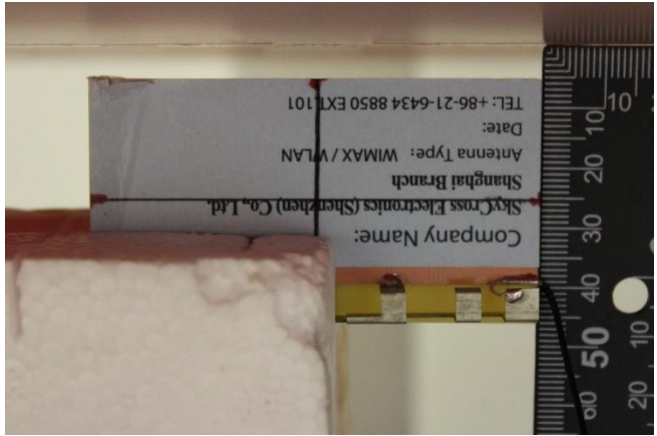
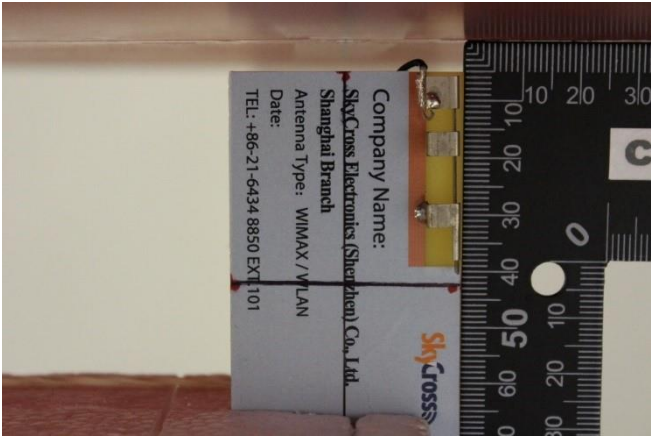
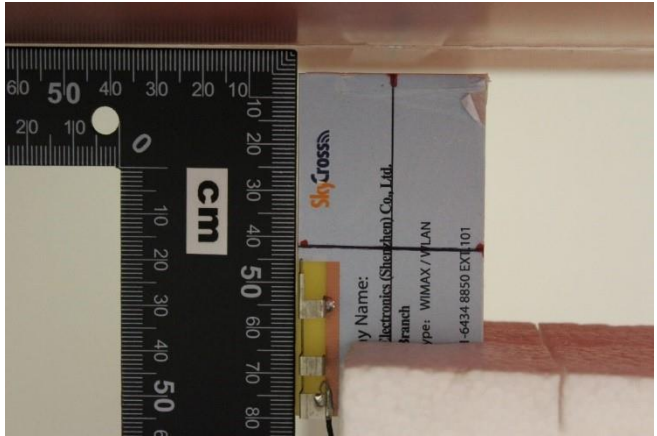
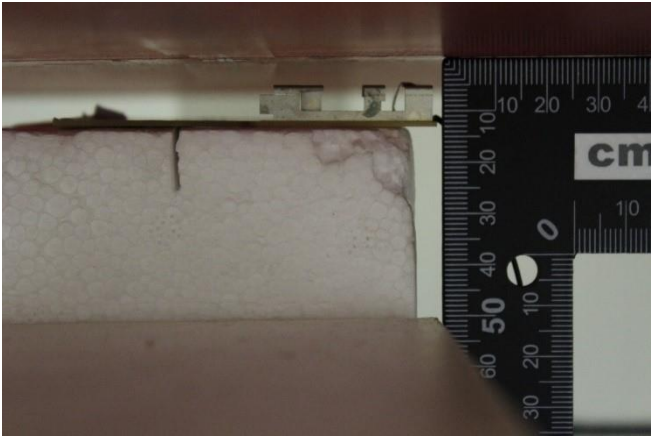
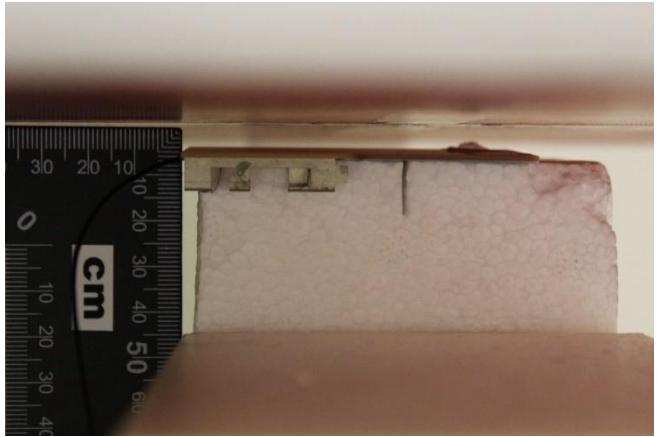
Platform Extender: 210611-03.S27




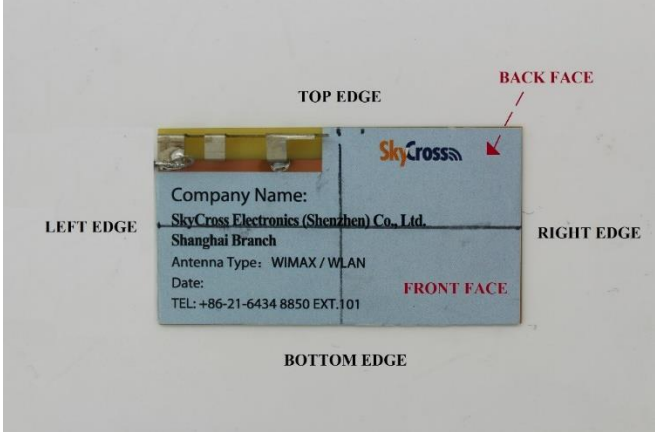
Laptop : 200611-01.S18



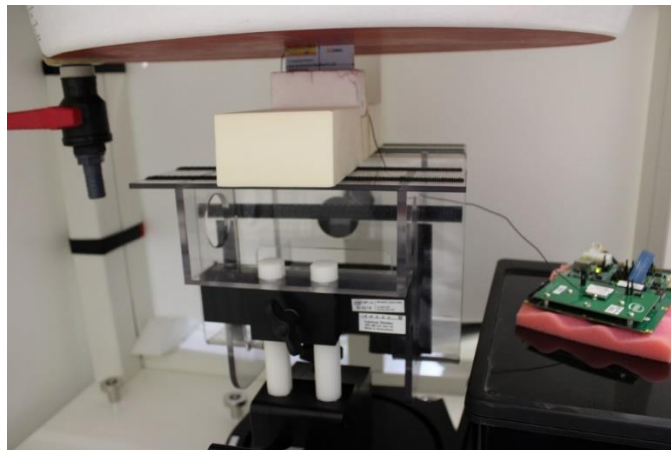
## F.2 Test positions

Top Edge 5mm	Bottom Edge 5mm
	
Left Edge 5mm	Right Edge 5mm
	
Front Face 5mm	Back Face 5mm
	

### F.3 Antenna host platform location and adjacent edge positions relative to the body

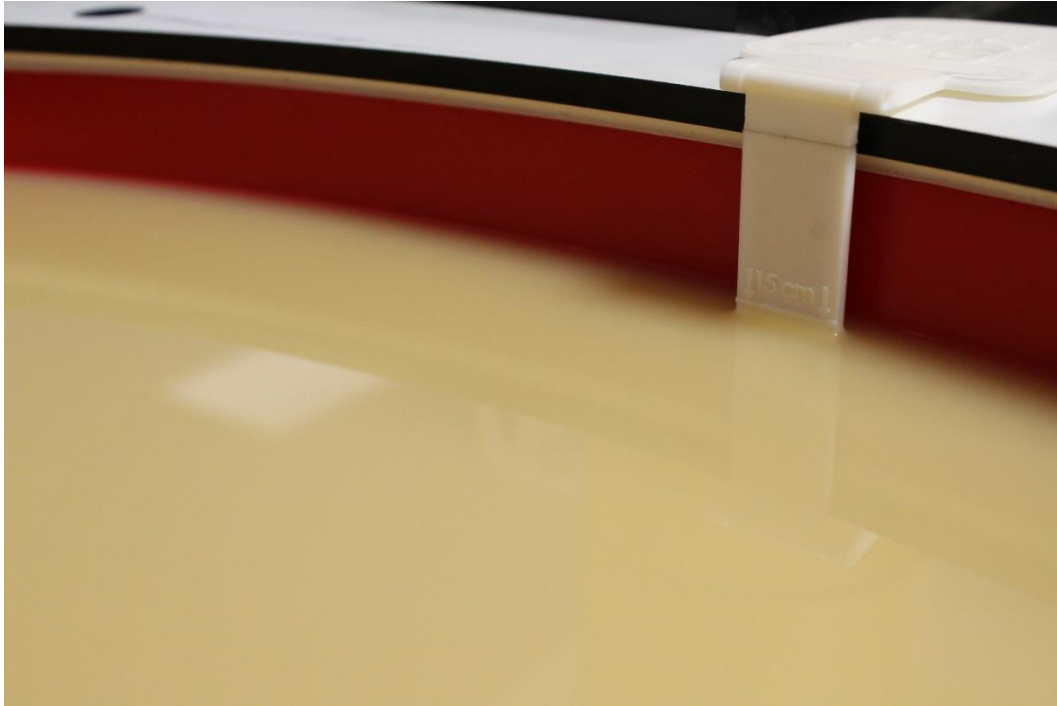
Antenna Front View	Antenna Positions
 <p>The image shows the front view of the antenna host platform. A black ruler is placed above the antenna for scale. The antenna is a rectangular grey PCB with a yellow antenna element on the left side. A label on the antenna provides the following information:</p> <ul style="list-style-type: none"><li>Company Name: SkyCross Electronics (Shenzhen) Co., Ltd.</li><li>Shanghai Branch</li><li>Antenna Type: WIMAX / WLAN</li><li>Date:</li><li>TEL: +86-21-6434 8850 EXT.101</li></ul>	 <p>The diagram shows the antenna host platform with its edges and faces labeled. The labels are: TOP EDGE, BOTTOM EDGE, LEFT EDGE, RIGHT EDGE, and BACK FACE. The front face is also labeled. The antenna is shown with a yellow antenna element on the left side. The label on the antenna provides the following information:</p> <ul style="list-style-type: none"><li>Company Name: SkyCross Electronics (Shenzhen) Co., Ltd.</li><li>Shanghai Branch</li><li>Antenna Type: WIMAX / WLAN</li><li>Date:</li><li>TEL: +86-21-6434 8850 EXT.101</li></ul>

#### General Setup



#### F.4 Phantom liquid level during measurements

ELI phantom Body liquid SAR Dasy SPEAG MBBL600-6000V6 Batch -1-180206-04



**End of the report**

**This page is intentionally left blank and marks the last page of the test report.**