

#01_WLAN2.4GHz_802.11b 1Mbps_Back_8mm_Ch11;Main Ant

Communication System: WLAN 2.4GHz; Frequency: 2462.0 ; Duty Cycle: 1:1.005

Medium: HSL_2450_220521 Medium parameters used: $f = 2462.0$ MHz; $\sigma = 1.84$ S/m; $\epsilon_r = 38.9$

Ambient Temperature: 23.5°C; Liquid Temperature: 22.5°C

DASY6 Configuration:

- Probe: EX3DV4 - SN7692; ConvF(8.41, 8.41, 8.41); Calibrated: 2021-11-03
- Sensor-Surface: 1.4 mm
- Electronics: DAE4 Sn1694; Calibrated: 2021-11-03
- Phantom: ELI V8.0 (20deg probe tilt); Serial: 2156; Section: Flat
- Measurement Software: cDASY6 V6.6.0.13926
- UID: WLAN, 10315-AAB
- MAIA: Area Scan: N/A; Zoom Scan: N/A

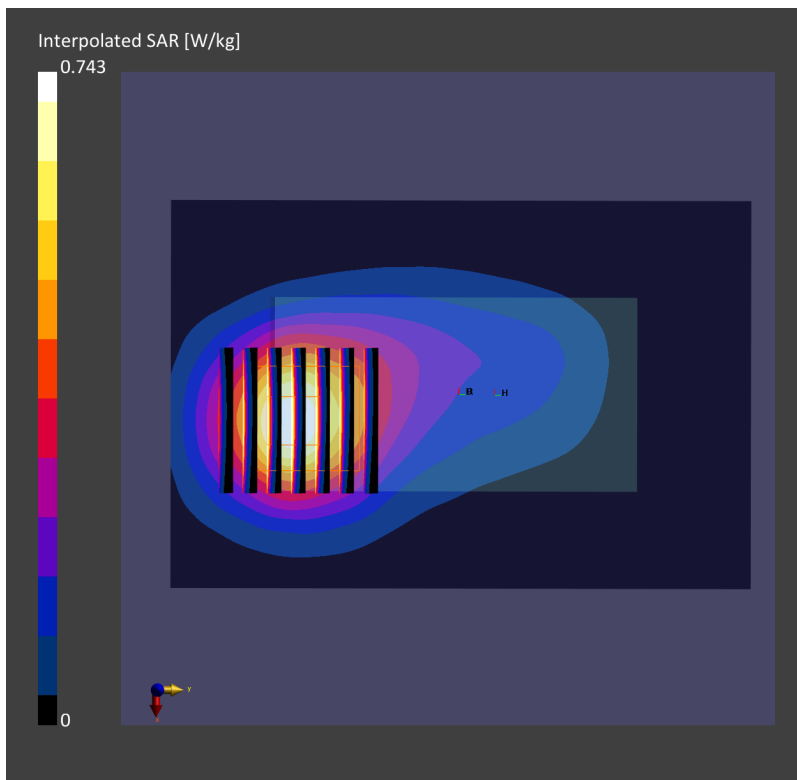
Area Scan (80.0 mm x 120.0 mm): Measurement Grid: 10.0 mm x 12.0 mm

SAR (1g) = 0.579 W/kg; SAR (10g) = 0.297 W/kg;

Zoom Scan (30.0 mm x 30.0 mm x 30.0 mm): Measurement Grid: 5.0 mm x 5.0 mm x 1.5 mm

Power Drift = 0.01 dB

SAR (1g) = 0.598 W/kg; SAR (10g) = 0.315 W/kg;



#02_WLAN5GHz_802.11ac-VHT80 MCS0_Left Side_8mm_Ch58;Aux Ant

Communication System: WLAN 5GHz; Frequency: 5290.0 ; Duty Cycle: 1:1.011
Medium: HSL_5250_220517 Medium parameters used: $f= 5290.0$ MHz; $\sigma= 4.70$ S/m; $\epsilon_r = 35.5$
Ambient Temperature: 23.5°C; Liquid Temperature: 22.5°C

DASY6 Configuration:

- Probe: EX3DV4 - SN7692; ConvF(5.45, 5.45, 5.45); Calibrated: 2021-11-03
- Sensor-Surface: 1.4 mm
- Electronics: DAE4 Sn1694; Calibrated: 2021-11-03
- Phantom: ELI V8.0 (20deg probe tilt); Serial: 2156; Section: Flat
- Measurement Software: cDASY6 V6.6.0.13926
- UID: WLAN, 10544-AAC
- MAIA: Area Scan: N/A; Zoom Scan: N/A

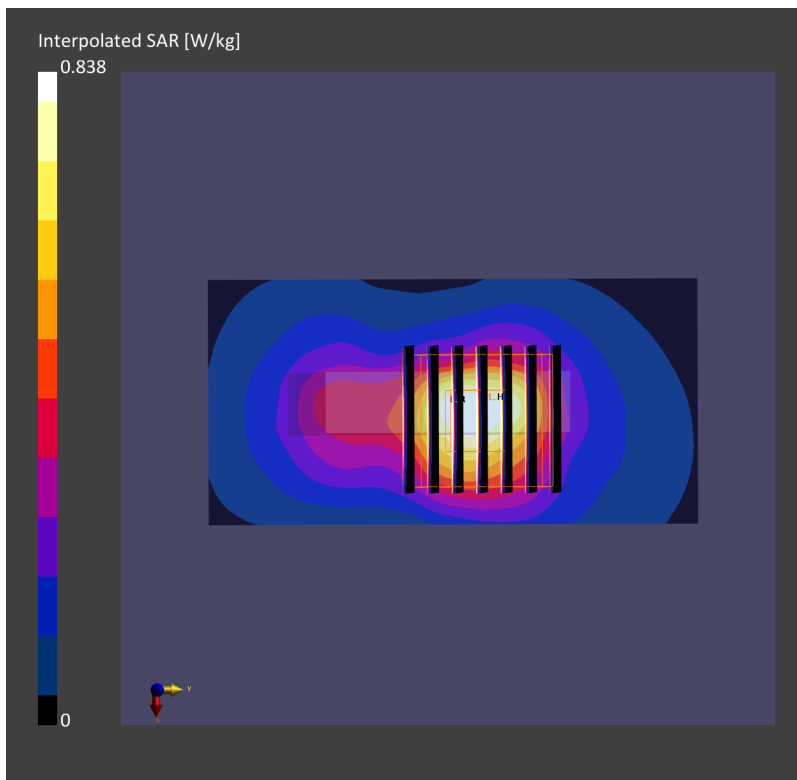
Area Scan (40.0 mm x 80.0 mm): Measurement Grid: 10.0 mm x 10.0 mm

SAR (1g) = 0.622 W/kg; SAR (10g) = 0.225 W/kg;

Zoom Scan (24.0 mm x 24.0 mm x 22.0 mm): Measurement Grid: 4.0 mm x 4.0 mm x 1.4 mm

Power Drift = -0.05 dB

SAR (1g) = 0.705 W/kg; SAR (10g) = 0.227 W/kg;



#03_WLAN5GHz_802.11ac-VHT80 MCS0_Left Side_8mm_Ch122;Aux Ant

Communication System: WLAN 5GHz; Frequency: 5610.0 ; Duty Cycle: 1:1.011
Medium: HSL_5600_220517 Medium parameters used: $f= 5610.0$ MHz; $\sigma= 5.05$ S/m; $\epsilon_r = 34.9$
Ambient Temperature: 23.5°C; Liquid Temperature: 22.5°C

DASY6 Configuration:

- Probe: EX3DV4 - SN7692; ConvF(4.75, 4.75, 4.75); Calibrated: 2021-11-03
- Sensor-Surface: 1.4 mm
- Electronics: DAE4 Sn1694; Calibrated: 2021-11-03
- Phantom: ELI V8.0 (20deg probe tilt); Serial: 2156; Section: Flat
- Measurement Software: cDASY6 V6.6.0.13926
- UID: WLAN, 10544-AAC
- MAIA: Area Scan: N/A; Zoom Scan: N/A

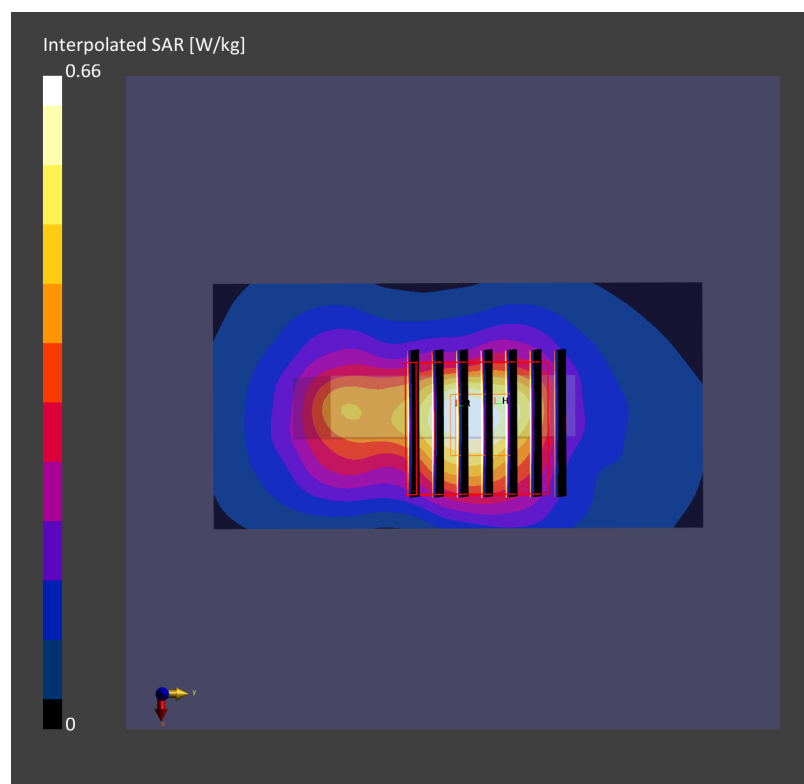
Area Scan (40.0 mm x 80.0 mm): Measurement Grid: 10.0 mm x 10.0 mm

SAR (1g) = 0.494 W/kg; SAR (10g) = 0.181 W/kg;

Zoom Scan (24.0 mm x 24.0 mm x 22.0 mm): Measurement Grid: 4.0 mm x 4.0 mm x 1.4 mm

Power Drift = 0.02 dB

SAR (1g) = 0.563 W/kg; SAR (10g) = 0.181 W/kg;



#04_WLAN5GHz_802.11ac-VHT80 MCS0_Left Side_8mm_Ch138;Aux Ant

Communication System: WLAN 5GHz; Frequency: 5690.0 ; Duty Cycle: 1:1.011
Medium: HSL_5750_220517 Medium parameters used: $f= 5690.0$ MHz; $\sigma= 5.16$ S/m; $\epsilon_r = 34.8$
Ambient Temperature: 23.5°C; Liquid Temperature: 22.5°C

DASY6 Configuration:

- Probe: EX3DV4 - SN7692; ConvF(5.0, 5.0, 5.0); Calibrated: 2021-11-03
- Sensor-Surface: 1.4 mm
- Electronics: DAE4 Sn1694; Calibrated: 2021-11-03
- Phantom: ELI V8.0 (20deg probe tilt); Serial: 2156; Section: Flat
- Measurement Software: cDASY6 V6.6.0.13926
- UID: WLAN, 10544-AAC
- MAIA: Area Scan: N/A; Zoom Scan: N/A

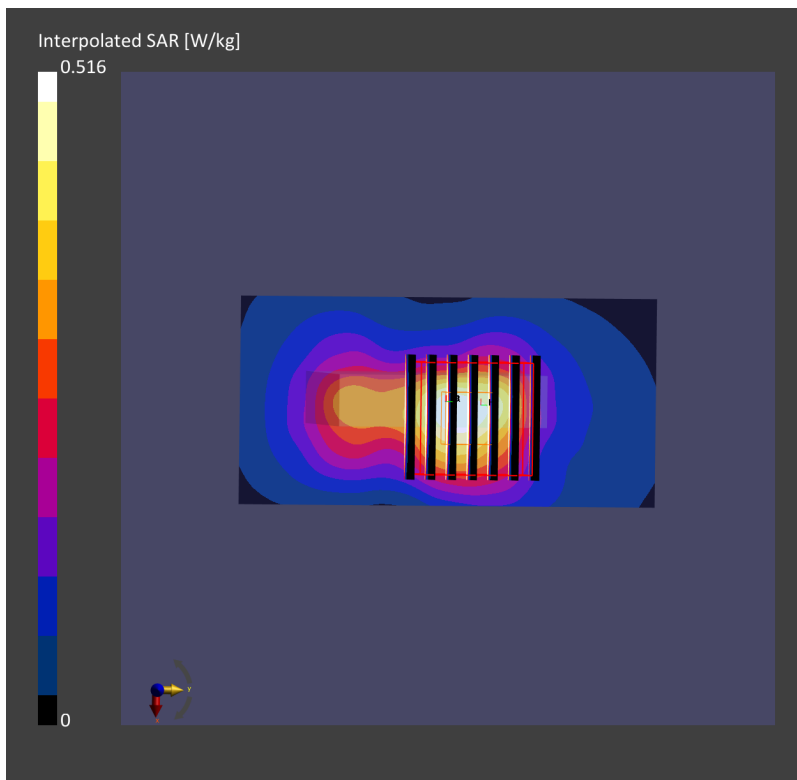
Area Scan (40.0 mm x 80.0 mm): Measurement Grid: 10.0 mm x 10.0 mm

SAR (1g) = 0.390 W/kg; SAR (10g) = 0.142 W/kg;

Zoom Scan (24.0 mm x 24.0 mm x 22.0 mm): Measurement Grid: 4.0 mm x 4.0 mm x 1.4 mm

Power Drift = 0.07 dB

SAR (1g) = 0.448 W/kg; SAR (10g) = 0.140 W/kg;



#05_Bluetooth_1Mbps_Back_8mm_Ch78;Aux Ant

Communication System: ISM 2.4 GHz Band; Frequency: 2480.0 ; Duty Cycle: 1:1.295
Medium: HSL_2450_220521 Medium parameters used: $f= 2480.0$ MHz; $\sigma= 1.86$ S/m; $\epsilon_r = 38.8$
Ambient Temperature: 23.5°C; Liquid Temperature: 22.5°C

DASY6 Configuration:

- Probe: EX3DV4 - SN7692; ConvF(8.41, 8.41, 8.41); Calibrated: 2021-11-03
- Sensor-Surface: 1.4 mm
- Electronics: DAE4 Sn1694; Calibrated: 2021-11-03
- Phantom: ELI V8.0 (20deg probe tilt); Serial: 2156; Section: Flat
- Measurement Software: cDASY6 V6.6.0.13926
- UID: Bluetooth, 10032-CAA
- MAIA: Area Scan: N/A; Zoom Scan: N/A

Area Scan (80.0 mm x 120.0 mm): Measurement Grid: 10.0 mm x 12.0 mm

SAR (1g) = 0.115 W/kg; SAR (10g) = 0.059 W/kg;

Zoom Scan (30.0 mm x 30.0 mm x 30.0 mm): Measurement Grid: 5.0 mm x 5.0 mm x 1.5 mm

Power Drift = -0.02 dB

SAR (1g) = 0.120 W/kg; SAR (10g) = 0.063 W/kg;

