

## Measurement Report for Device

### Device Under Test Properties

Model, Manufacturer	Dimensions [mm]	IMEI	DUT Type
Device,	70.0 x 50.0 x 8.0		Dipole

### Exposure Conditions

Phantom Section	Position, Test Distance [mm]	Frequency [MHz]	Conversion Factor
5G	FRONT, 10.00	10000.0	1.0

### Hardware Setup

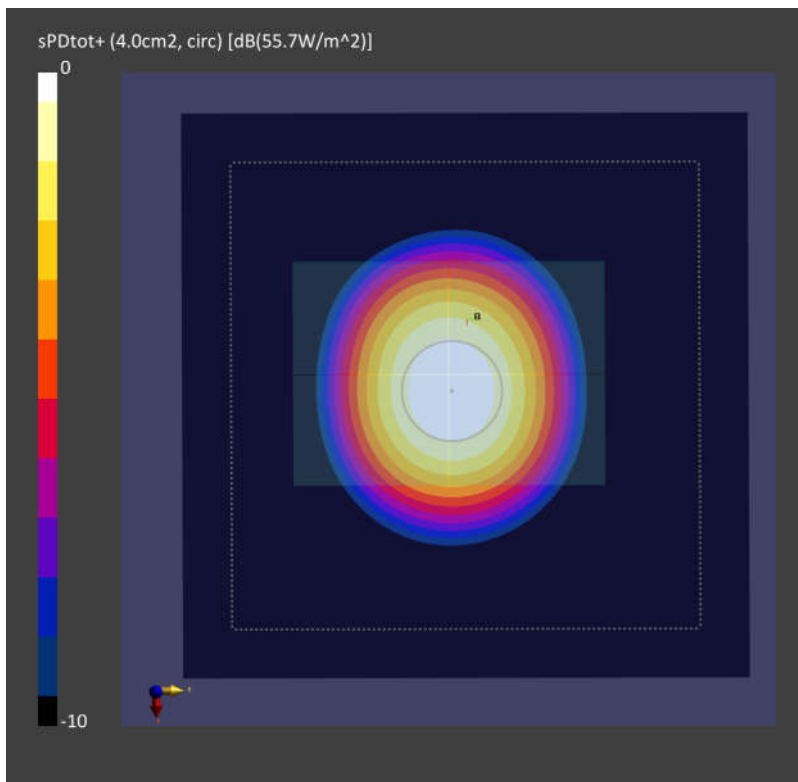
Phantom	Medium	Probe, Calibration Date	DAE, Calibration Date
mmWave - 1044	Air -	EUmmWV3 - SN9424_F1-55GHz, 2022-04-06	DAE4 Sn1424, 2022-01-20

### Scans Setup

Scan Type	5G Scan
Grid Extents [mm]	120.0 x 120.0
Grid Steps [lambda]	0.25 x 0.25
Sensor Surface [mm]	10.0

### Measurement Results

Date	2022-07-19, 02:05
Avg. Area [cm <sup>2</sup> ]	4.00
psPDn+ [W/m <sup>2</sup> ]	55.5
psPDtot+ [W/m <sup>2</sup> ]	55.7
H <sub>max</sub> [A/m]	0.407
E <sub>max</sub> [V/m]	157
max <sub>(Sto)</sub> [W/m <sup>2</sup> ]	62.7
Power Drift [dB]	0.07



## Measurement Report for Device

### Device Under Test Properties

Model, Manufacturer	Dimensions [mm]	IMEI	DUT Type
Device,	70.0 x 50.0 x 8.0		Dipole

### Exposure Conditions

Phantom Section	Position, Test Distance [mm]	Frequency [MHz]	Conversion Factor
5G	FRONT, 10.00	10000.0	1.0

### Hardware Setup

Phantom	Medium	Probe, Calibration Date	DAE, Calibration Date
mmWave - 1044	Air -	EUmmWV3 - SN9424_F1-55GHz, 2022-04-06	DAE4 Sn316, 2022-01-26

### Scans Setup

Scan Type	5G Scan
Grid Extents [mm]	120.0 x 120.0
Grid Steps [lambda]	0.25 x 0.25
Sensor Surface [mm]	10.0

### Measurement Results

Date	2022-08-08, 08:13
Avg. Area [cm <sup>2</sup> ]	4.00
psPDn+ [W/m <sup>2</sup> ]	54.9
psPDtot+ [W/m <sup>2</sup> ]	55.0
H <sub>max</sub> [A/m]	0.404
E <sub>max</sub> [V/m]	153
max <sub>(Stot)</sub> [W/m <sup>2</sup> ]	61.9
Power Drift [dB]	0.05

