

#01_WLAN2.4GHz_802.11b 1Mbps_Back_5mm_Ch6;Main Ant

Communication System: WLAN 2.4GHz; Frequency: 2437.0 ; Duty Cycle: 1:1.005

Medium: HSL_2450_220520 Medium parameters used: $f= 2437.0$ MHz; $\sigma= 1.83$ S/m; $\epsilon_r = 39.1$

Ambient Temperature: 23.5°C; Liquid Temperature: 22.5°C

DASY6 Configuration:

- Probe: EX3DV4 - SN7692; ConvF(8.41, 8.41, 8.41); Calibrated: 2021-11-03
- Sensor-Surface: 1.4 mm
- Electronics: DAE4 Sn1694; Calibrated: 2021-11-03
- Phantom: ELI V8.0 (20deg probe tilt); Serial: 2156; Section: Flat
- Measurement Software: cDASY6 V6.6.0.13926
- UID: WLAN, 10315-AAB
- MAIA: Area Scan: N/A; Zoom Scan: N/A

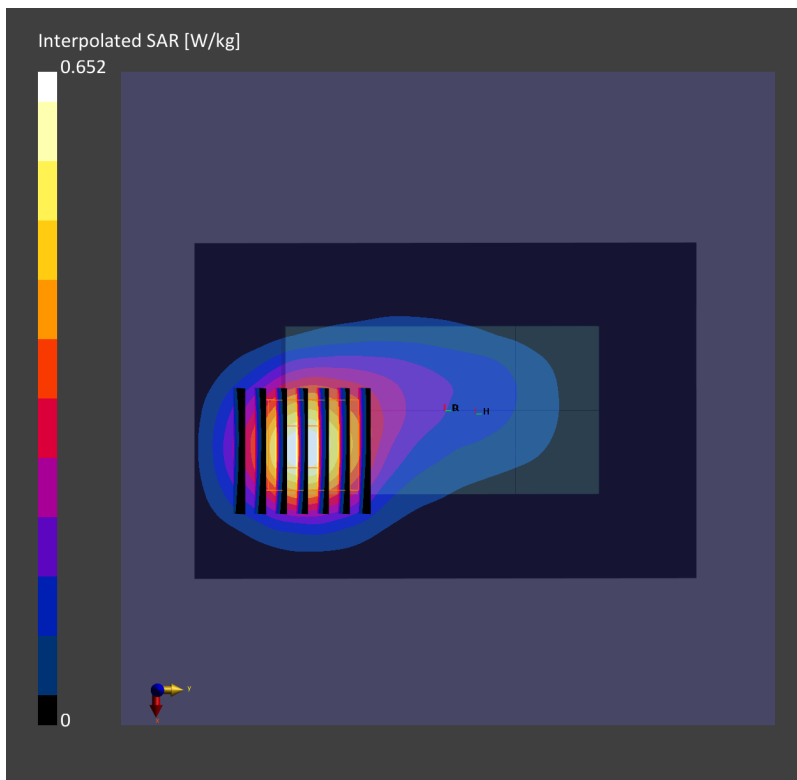
Area Scan (80.0 mm x 120.0 mm): Measurement Grid: 10.0 mm x 12.0 mm

SAR (1g) = 0.502 W/kg; SAR (10g) = 0.252 W/kg;

Zoom Scan (30.0 mm x 30.0 mm x 30.0 mm): Measurement Grid: 5.0 mm x 5.0 mm x 1.5 mm

Power Drift = -0.01 dB

SAR (1g) = 0.523 W/kg; SAR (10g) = 0.270 W/kg;



#02_WLAN5GHz_802.11ac-VHT160 MCS0_Left Side_5mm_Ch50;Main Ant

Communication System: WLAN 5GHz; Frequency: 5250.0 ; Duty Cycle: 1:1.011
Medium: HSL_5250_220516 Medium parameters used: $f= 5250.0$ MHz; $\sigma= 4.63$ S/m; $\epsilon_r = 35.5$
Ambient Temperature: 23.5°C; Liquid Temperature: 22.5°C

DASY6 Configuration:

- Probe: EX3DV4 - SN7692; ConvF(5.45, 5.45, 5.45); Calibrated: 2021-11-03
- Sensor-Surface: 1.4 mm
- Electronics: DAE4 Sn1694; Calibrated: 2021-11-03
- Phantom: ELI V8.0 (20deg probe tilt); Serial: 2156; Section: Flat
- Measurement Software: cDASY6 V6.6.0.13926
- UID: WLAN, 10456-AAC
- MAIA: Area Scan: N/A; Zoom Scan: N/A

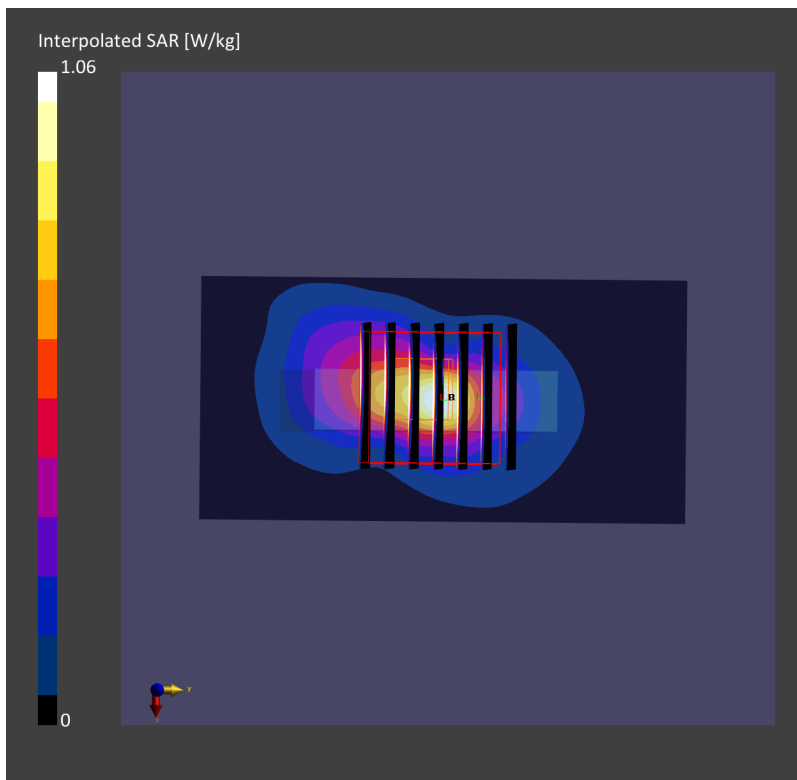
Area Scan (40.0 mm x 80.0 mm): Measurement Grid: 10.0 mm x 10.0 mm

SAR (1g) = 0.648 W/kg; SAR (10g) = 0.195 W/kg;

Zoom Scan (24.0 mm x 24.0 mm x 22.0 mm): Measurement Grid: 4.0 mm x 4.0 mm x 1.4 mm

Power Drift = 0.08 dB

SAR (1g) = 0.740 W/kg; SAR (10g) = 0.211 W/kg;



#03_WLAN5GHz_802.11ac-VHT160 MCS0_Left Side_5mm_Ch114;Aux Ant

Communication System: WLAN 5GHz; Frequency: 5570.0 ; Duty Cycle: 1:1.011
Medium: HSL_5600_220516 Medium parameters used: $f= 5570.0$ MHz; $\sigma= 5.00$ S/m; $\epsilon_r = 34.9$
Ambient Temperature: 23.5°C; Liquid Temperature: 22.5°C

DASY6 Configuration:

- Probe: EX3DV4 - SN7692; ConvF(4.75, 4.75, 4.75); Calibrated: 2021-11-03
- Sensor-Surface: 1.4 mm
- Electronics: DAE4 Sn1694; Calibrated: 2021-11-03
- Phantom: ELI V8.0 (20deg probe tilt); Serial: 2156; Section: Flat
- Measurement Software: cDASY6 V6.6.0.13926
- UID: WLAN, 10544-AAC
- MAIA: Area Scan:N/A ; Zoom Scan:N/A

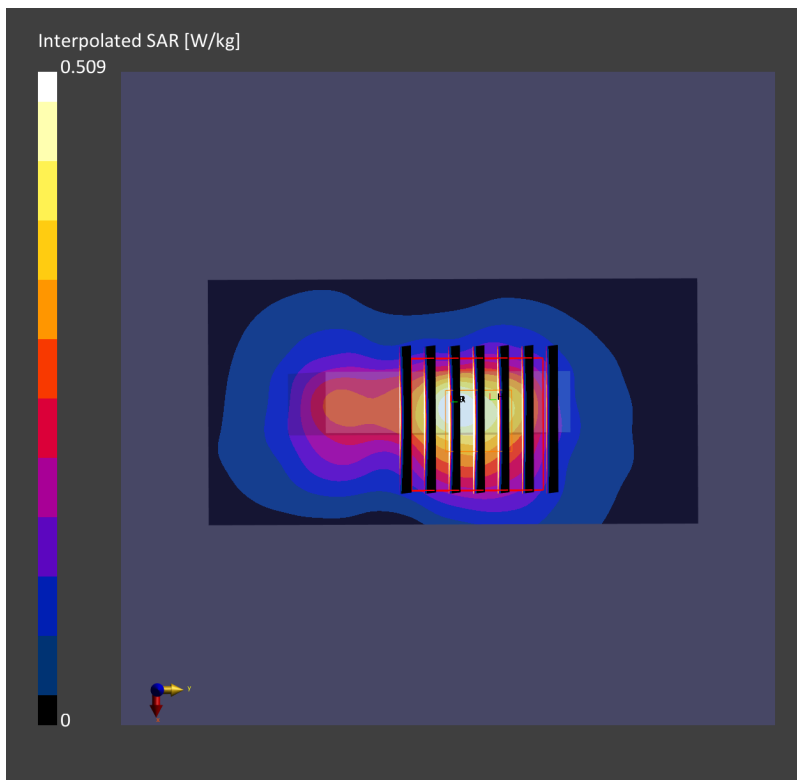
Area Scan (40.0 mm x 80.0 mm): Measurement Grid: 10.0 mm x 10.0 mm

SAR (1g) = 0.362 W/kg; SAR (10g) = 0.121 W/kg;

Zoom Scan (24.0 mm x 24.0 mm x 22.0 mm): Measurement Grid: 4.0 mm x 4.0 mm x 1.4 mm

Power Drift = 0.06 dB

SAR (1g) = 0.444 W/kg; SAR (10g) = 0.125 W/kg;



#04_WLAN5GHz_802.11ac-VHT80 MCS0_Left Side_5mm_Ch155;Aux Ant

Communication System: WLAN 5GHz; Frequency: 5775.0 ; Duty Cycle: 1:1.011
Medium: HSL_5750_220516 Medium parameters used: $f= 5775.0$ MHz; $\sigma= 5.24$ S/m; $\epsilon_r = 34.5$
Ambient Temperature: 23.5°C; Liquid Temperature: 22.5°C

DASY6 Configuration:

- Probe: EX3DV4 - SN7692; ConvF(5.0, 5.0, 5.0); Calibrated: 2021-11-03
- Sensor-Surface: 1.4 mm
- Electronics: DAE4 Sn1694; Calibrated: 2021-11-03
- Phantom: ELI V8.0 (20deg probe tilt); Serial: 2156; Section: Flat
- Measurement Software: cDASY6 V6.6.0.13926
- UID: WLAN, 10544-AAC
- MAIA: Area Scan:N/A ; Zoom Scan:N/A

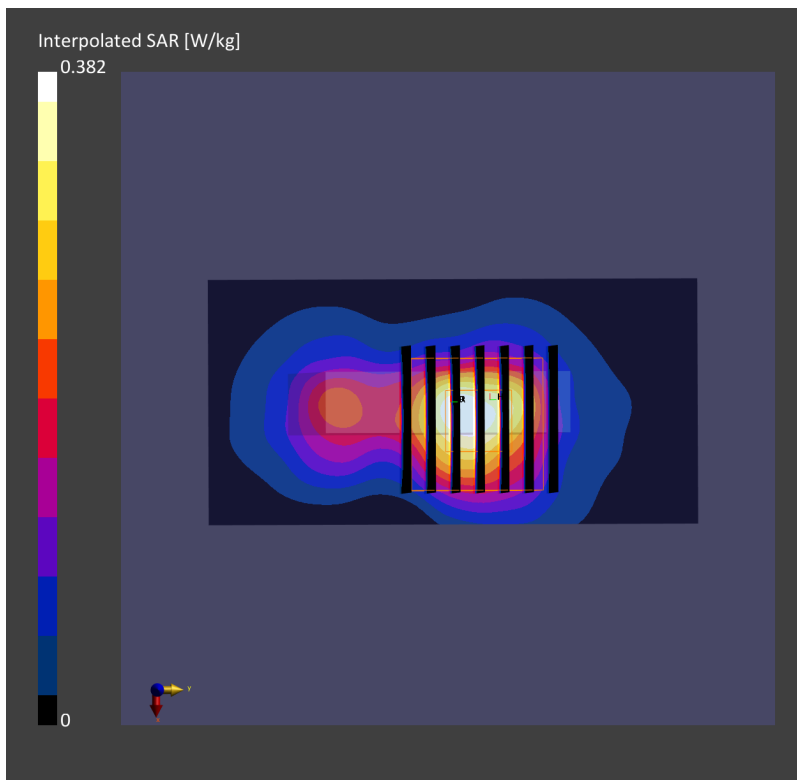
Area Scan (40.0 mm x 80.0 mm): Measurement Grid: 10.0 mm x 10.0 mm

SAR (1g) = 0.287 W/kg; SAR (10g) = 0.096 W/kg;

Zoom Scan (24.0 mm x 24.0 mm x 22.0 mm): Measurement Grid: 4.0 mm x 4.0 mm x 1.4 mm

Power Drift = 0.03 dB

SAR (1g) = 0.370 W/kg; SAR (10g) = 0.102 W/kg;



#05_Bluetooth_1Mbps_Back_5mm_Ch78;Aux Ant

Communication System: ISM 2.4 GHz Band; Frequency: 2480.0 ; Duty Cycle: 1:1.295
Medium: HSL_2450_220520 Medium parameters used: $f= 2480.0$ MHz; $\sigma= 1.88$ S/m; $\epsilon_r = 38.9$
Ambient Temperature: 23.5°C; Liquid Temperature: 22.5°C

DASY6 Configuration:

- Probe: EX3DV4 - SN7692; ConvF(8.41, 8.41, 8.41); Calibrated: 2021-11-03
- Sensor-Surface: 1.4 mm
- Electronics: DAE4 Sn1694; Calibrated: 2021-11-03
- Phantom: ELI V8.0 (20deg probe tilt); Serial: 2156; Section: Flat
- Measurement Software: cDASY6 V6.6.0.13926
- UID: Bluetooth, 10032-CAA
- MAIA: Area Scan:N/A ; Zoom Scan:N/A

Area Scan (70.0 mm x 120.0 mm): Measurement Grid: 10.0 mm x 12.0 mm

SAR (1g) = 0.144 W/kg; SAR (10g) = 0.073 W/kg;

Zoom Scan (30.0 mm x 30.0 mm x 30.0 mm): Measurement Grid: 5.0 mm x 5.0 mm x 1.5 mm

Power Drift = -0.01 dB

SAR (1g) = 0.152 W/kg; SAR (10g) = 0.079 W/kg;

