

System Check_Head_2450MHz

DUT: D2450V2-736

Communication System: CW; Frequency: 2450.0 ; Duty Cycle: 1:1

Medium: HSL_2450_220520 Medium parameters used: $f=2450.0$ MHz; $\sigma=1.84$ S/m; $\epsilon_r=39.1$

Ambient Temperature: 23.5°C; Liquid Temperature: 22.5°C

DASY6 Configuration:

- Probe: EX3DV4 - SN7692; ConvF(8.41, 8.41, 8.41); Calibrated: 2021-11-03
- Sensor-Surface: 1.4 mm
- Electronics: DAE4 Sn1694; Calibrated: 2021-11-03
- Phantom: ELI V8.0 (20deg probe tilt); Serial: 2156; Section: Flat
- Measurement Software: cDASY6 V6.6.0.13926
- UID: , 0--
- MAIA: Area Scan: N/A; Zoom Scan: N/A

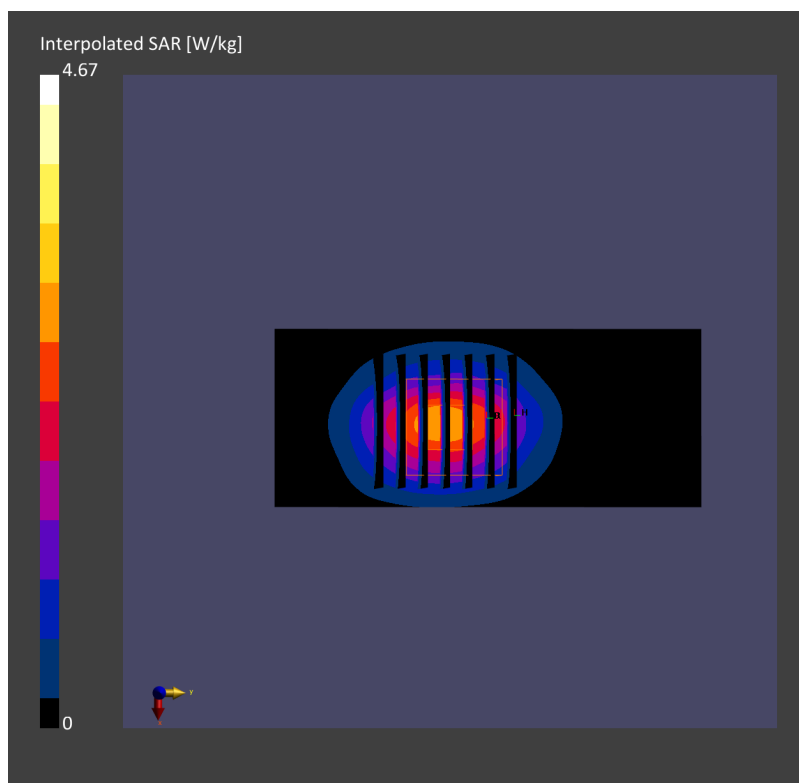
Pin=50mW/Area Scan (40.0 mm x 96.0 mm): Measurement Grid: 10.0 mm x 12.0 mm

SAR (1g) = 2.37 W/kg; SAR (10g) = 1.12 W/kg;

Pin=50mW/Zoom Scan (30.0 mm x 30.0 mm x 30.0 mm): Measurement Grid: 5.0 mm x 5.0 mm x 1.5 mm

Power Drift = -0.02 dB

SAR (1g) = 2.45 W/kg; SAR (10g) = 1.15 W/kg;



System Check_Head_5250MHz

DUT: D5GHzV2-1171

Communication System: CW; Frequency: 5250.0 ; Duty Cycle: 1:1

Medium: HSL_5250_220516 Medium parameters used: $f= 5250.0$ MHz; $\sigma= 4.63$ S/m; $\epsilon_r = 35.5$

Ambient Temperature: 23.5°C; Liquid Temperature: 22.5°C

DASY6 Configuration:

- Probe: EX3DV4 - SN7692; ConvF(5.45, 5.45, 5.45); Calibrated: 2021-11-03
- Sensor-Surface: 1.4 mm
- Electronics: DAE4 Sn1694; Calibrated: 2021-11-03
- Phantom: ELI V8.0 (20deg probe tilt); Serial: 2156; Section: Flat
- Measurement Software: cDASY6 V6.6.0.13926
- UID: , 0--
- MAIA: Area Scan: N/A; Zoom Scan: N/A

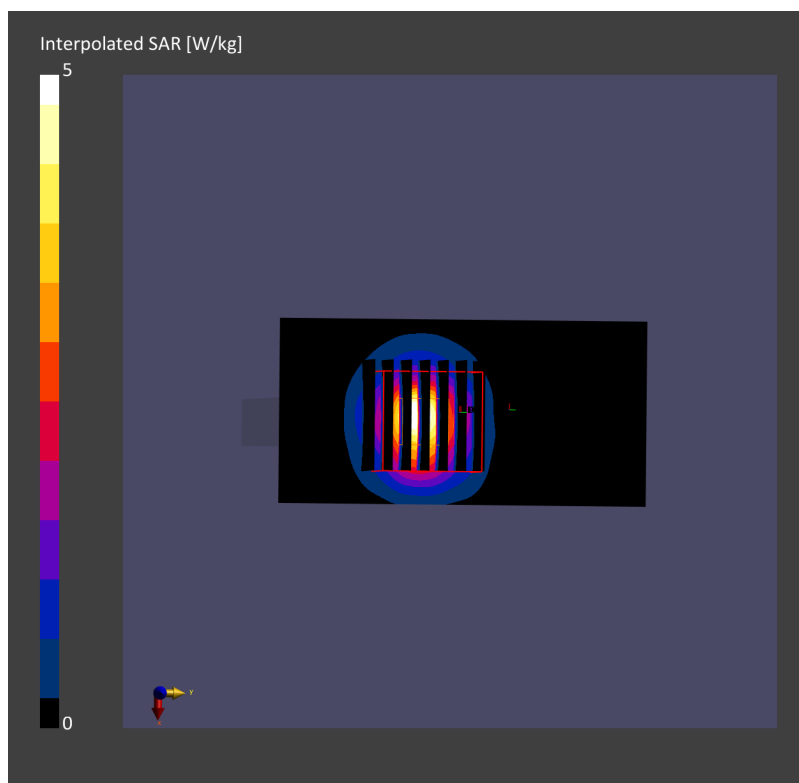
Pin=50mW/Area Scan (40.0 mm x 80.0 mm): Measurement Grid: 10.0 mm x 10.0 mm

SAR (1g) = 3.39 W/kg; SAR (10g) = 1.00 W/kg;

Pin=50mW/Zoom Scan (24.0 mm x 24.0 mm x 22.0 mm): Measurement Grid: 4.0 mm x 4.0 mm x 1.4 mm

Power Drift = -0.00 dB

SAR (1g) = 3.62 W/kg; SAR (10g) = 1.04 W/kg;



System Check_Head_5600MHz

DUT: D5GHzV2-1171

Communication System: CW; Frequency: 5600.0 ; Duty Cycle: 1:1

Medium: HSL_5600_220516 Medium parameters used: $f= 5600.0$ MHz; $\sigma= 5.03$ S/m; $\epsilon_r = 34.9$

Ambient Temperature: 23.5°C; Liquid Temperature: 22.5°C

DASY6 Configuration:

- Probe: EX3DV4 - SN7692; ConvF(4.75, 4.75, 4.75); Calibrated: 2021-11-03
- Sensor-Surface: 1.4 mm
- Electronics: DAE4 Sn1694; Calibrated: 2021-11-03
- Phantom: ELI V8.0 (20deg probe tilt); Serial: 2156; Section: Flat
- Measurement Software: cDASY6 V6.6.0.13926
- UID: , 0--
- MAIA: Area Scan: N/A; Zoom Scan: N/A

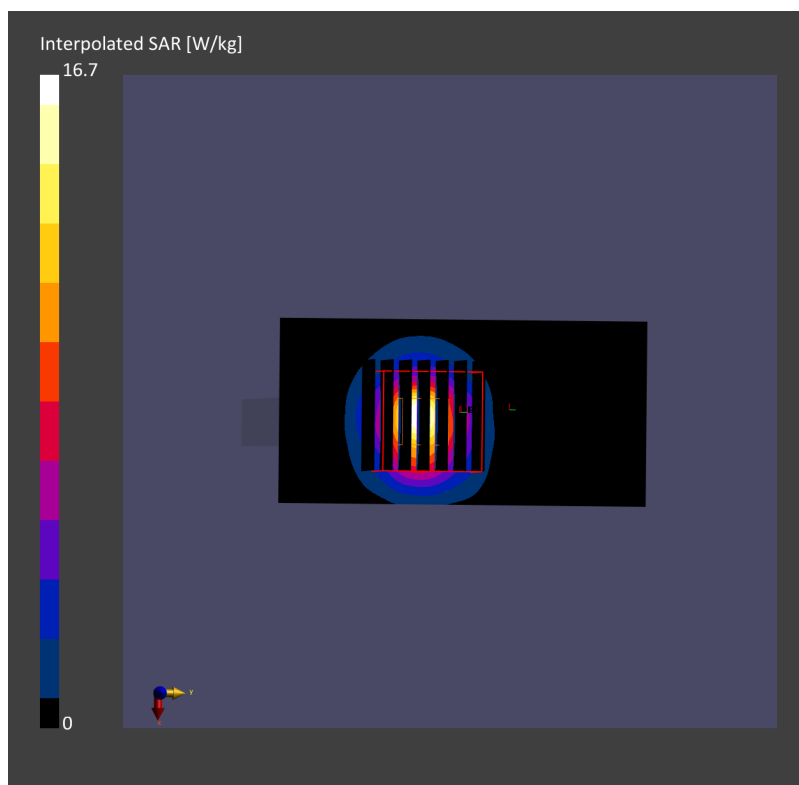
Pin=50mW/Area Scan (40.0 mm x 80.0 mm): Measurement Grid: 10.0 mm x 10.0 mm

SAR (1g) = 3.87 W/kg; SAR (10g) = 1.14 W/kg;

Pin=50mW/Zoom Scan (24.0 mm x 24.0 mm x 22.0 mm): Measurement Grid: 4.0 mm x 4.0 mm x 1.4 mm

Power Drift = -0.01 dB

SAR (1g) = 4.14 W/kg; SAR (10g) = 1.18 W/kg;



System Check_Head_5750MHz

DUT: D5GHzV2-1171

Communication System: CW; Frequency: 5750.0 ; Duty Cycle: 1:1

Medium: HSL_5750_220516 Medium parameters used: $f = 5750.0$ MHz; $\sigma = 5.21$ S/m; $\epsilon_r = 34.6$

Ambient Temperature: 23.5°C; Liquid Temperature: 22.5°C

DASY6 Configuration:

- Probe: EX3DV4 - SN7692; ConvF(5.0, 5.0, 5.0); Calibrated: 2021-11-03
- Sensor-Surface: 1.4 mm
- Electronics: DAE4 Sn1694; Calibrated: 2021-11-03
- Phantom: ELI V8.0 (20deg probe tilt); Serial: 2156; Section: Flat
- Measurement Software: cDASY6 V6.6.0.13926
- UID: , 0--
- MAIA: Area Scan: N/A; Zoom Scan: N/A

Pin=50mW/Area Scan (40.0 mm x 80.0 mm): Measurement Grid: 10.0 mm x 10.0 mm

SAR (1g) = 3.48 W/kg; SAR (10g) = 1.02 W/kg;

Pin=50mW/Zoom Scan (24.0 mm x 24.0 mm x 22.0 mm): Measurement Grid: 4.0 mm x 4.0 mm x 1.4 mm

Power Drift = 0.01 dB

SAR (1g) = 3.73 W/kg; SAR (10g) = 1.05 W/kg;

