

Measurement Report for Device

Device Under Test Properties

Model, Manufacturer	Dimensions [mm]	IMEI	DUT Type
Device,	70.0 x 50.0 x 8.0		Dipole

Exposure Conditions

Phantom Section	Position, Test Distance [mm]	Frequency [MHz]	Conversion Factor
5G	FRONT, 10.00	10000.0	1.0

Hardware Setup

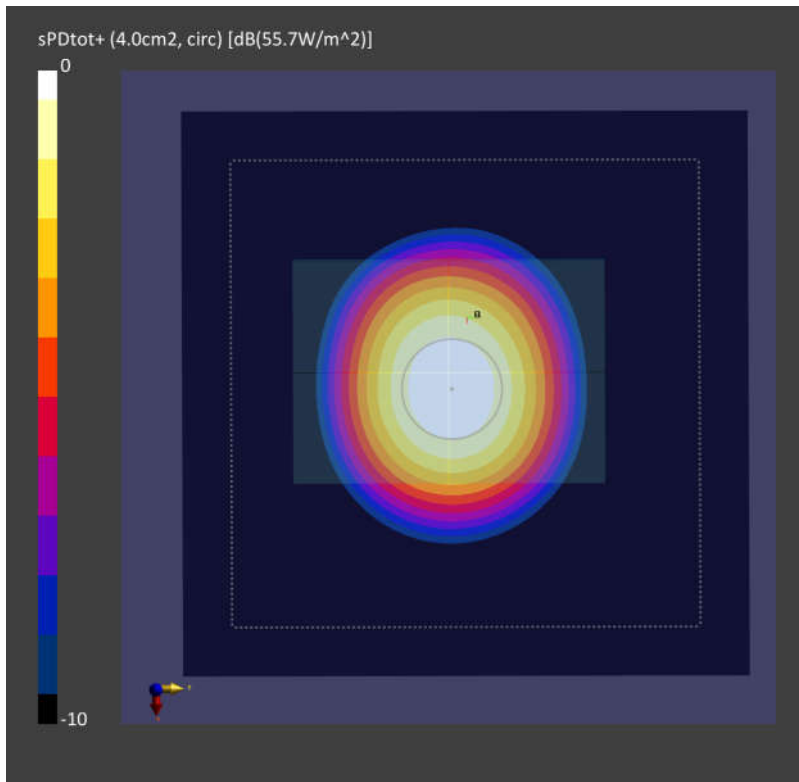
Phantom	Medium	Probe, Calibration Date	DAE, Calibration Date
mmWave - 1044	Air -	EUmmWV3 - SN9424_F1-55GHz, 2022-04-06	DAE4 Sn1424, 2022-01-20

Scans Setup

Scan Type	5G Scan
Grid Extents [mm]	120.0 x 120.0
Grid Steps [lambda]	0.25 x 0.25
Sensor Surface [mm]	10.0

Measurement Results

Date	2022-07-19, 02:05
Avg. Area [cm ²]	4.00
psPDn+ [W/m ²]	55.5
psPDtot+ [W/m ²]	55.7
H _{max} [A/m]	0.407
E _{max} [V/m]	157
max _(Sto) [W/m ²]	62.7
Power Drift [dB]	0.07



Measurement Report for Device

Device Under Test Properties

Model, Manufacturer	Dimensions [mm]	IMEI	DUT Type
Device,	70.0 x 50.0 x 8.0		Dipole

Exposure Conditions

Phantom Section	Position, Test Distance [mm]	Frequency [MHz]	Conversion Factor
5G	FRONT, 10.00	10000.0	1.0

Hardware Setup

Phantom	Medium	Probe, Calibration Date	DAE, Calibration Date
mmWave - 1044	Air -	EUmmWV4 - SN9461_F1-55GHz, 2021-10-22	DAE4 Sn656, 2022-01-19

Scans Setup

Scan Type	5G Scan
Grid Extents [mm]	120.0 x 120.0
Grid Steps [lambda]	0.25 x 0.25
Sensor Surface [mm]	10.0

Measurement Results

Date	2022-08-19, 06:05
Avg. Area [cm ²]	4.00
psPDn+ [W/m ²]	55.1
psPDtot+ [W/m ²]	55.3
H _{max} [A/m]	0.397
E _{max} [V/m]	145
max _(Stot) [W/m ²]	62.1
Power Drift [dB]	0.03

