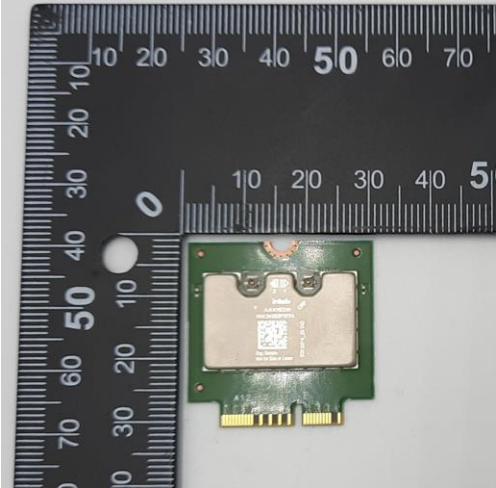
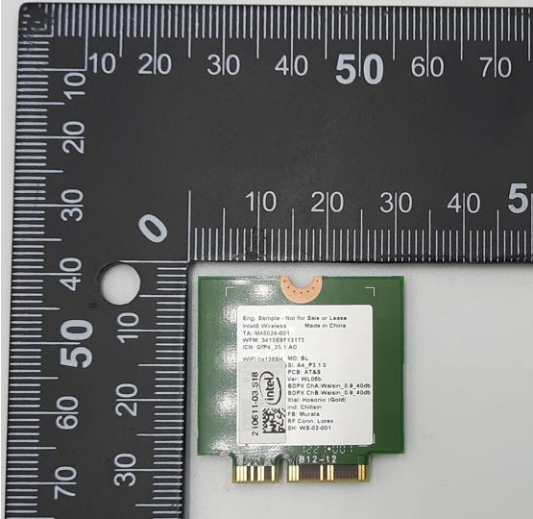


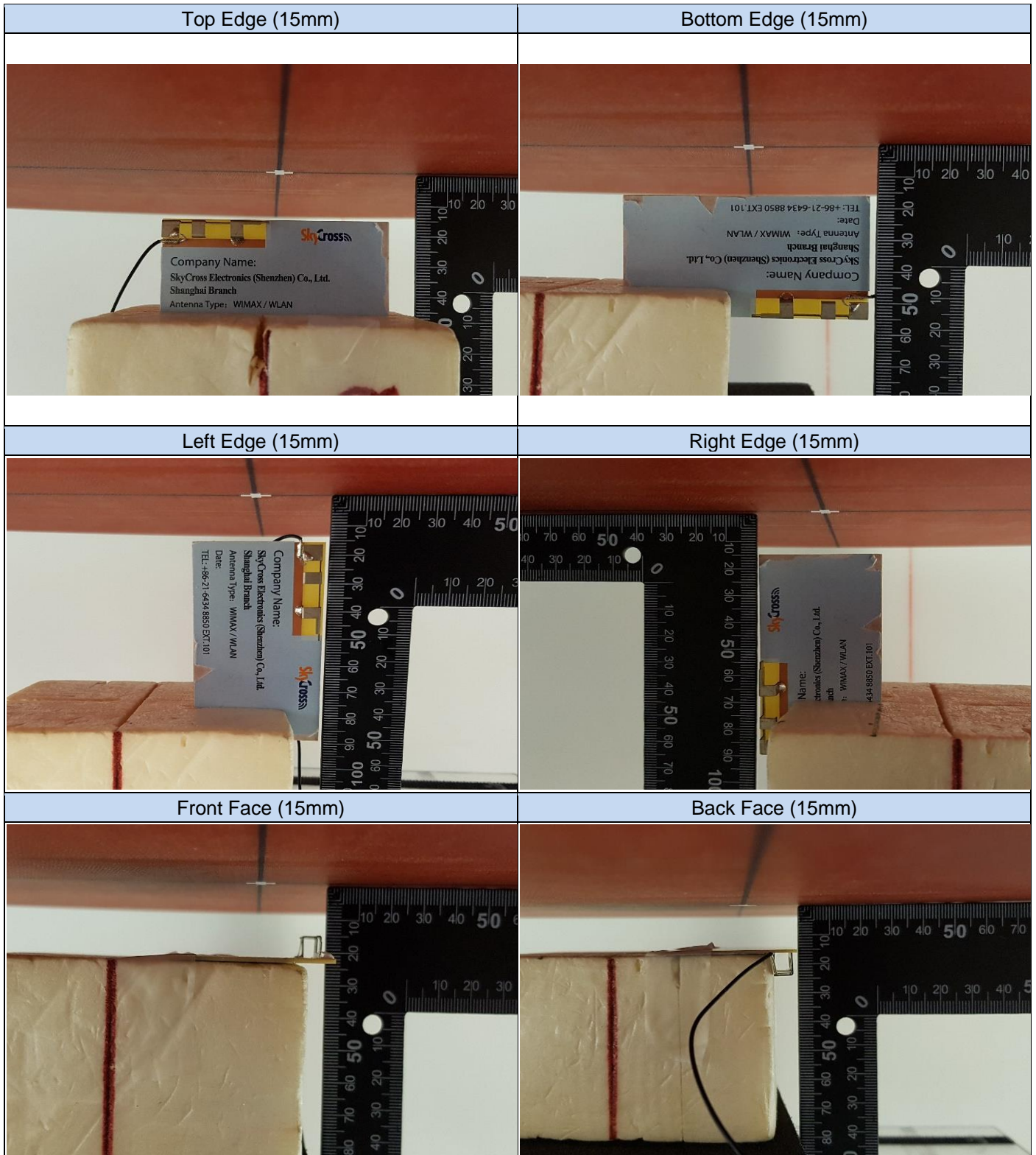


# Annex F. Photographs


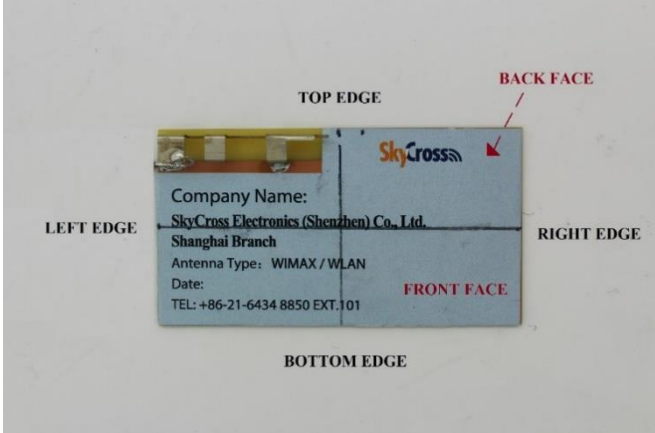
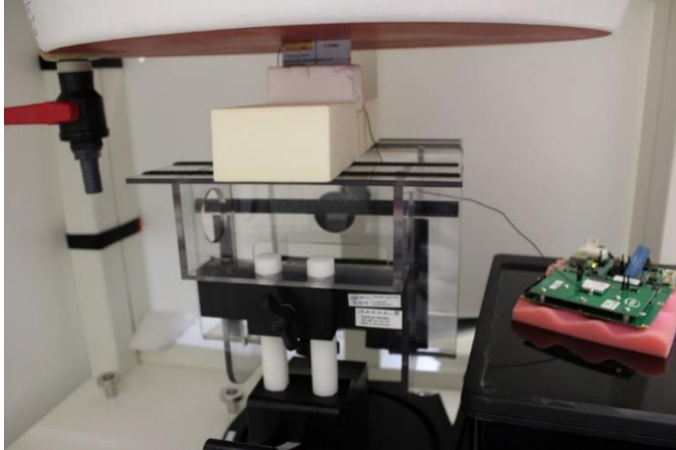
## F.1 Test Sample

|  |   |
|--|---|
| <p>E2W Module: (Front) 210611-03.S18</p>   | <p>E2W Module: (Back) 210611-03.S18</p>   |
|  <p>A photograph showing the front view of a green E2W module. A white label is visible on the top surface. The module is placed on a black ruler for scale, with markings in centimeters and millimeters.</p>  |  <p>A photograph showing the back view of the E2W module. A white label with technical specifications is visible. The module is placed on a black ruler for scale.</p> <p>Eng. Sample - Not for Sale or Lease<br/>Intel Wireless    Made in China<br/>TA: 8002282811<br/>WiFi: 341188F13175<br/>PCN: 8P4_25_A02</p> <p>WiFi: 341188F13175<br/>PCN: 8P4_25_A02<br/>PCB: 8P4_25_A02<br/>PCB: 8P4_25_A02<br/>BDFM: 018_Washen_018_8048<br/>BDFM: 018_Washen_018_8048<br/>Date: 08/04/11<br/>Int. China<br/>RF Comm. Lines<br/>Int. 018-01801</p> |
| <p>Platform Extender: 210611-02. S31</p>   | <p>Laptop Mode 170000-01. S15</p>   |
|  <p>A photograph of a green printed circuit board (PCB) labeled as a Platform Extender. It features various electronic components, including an Intel logo and a label with the part number 210611-02.S31. A black ruler is placed above the board for scale.</p> |  <p>A photograph of a black laptop, identified as Laptop Mode 170000-01. S15. The laptop is open, showing the keyboard and trackpad. Intel and Microsoft logos are visible on the bottom bezel.</p>   |

## F.2 Test positions

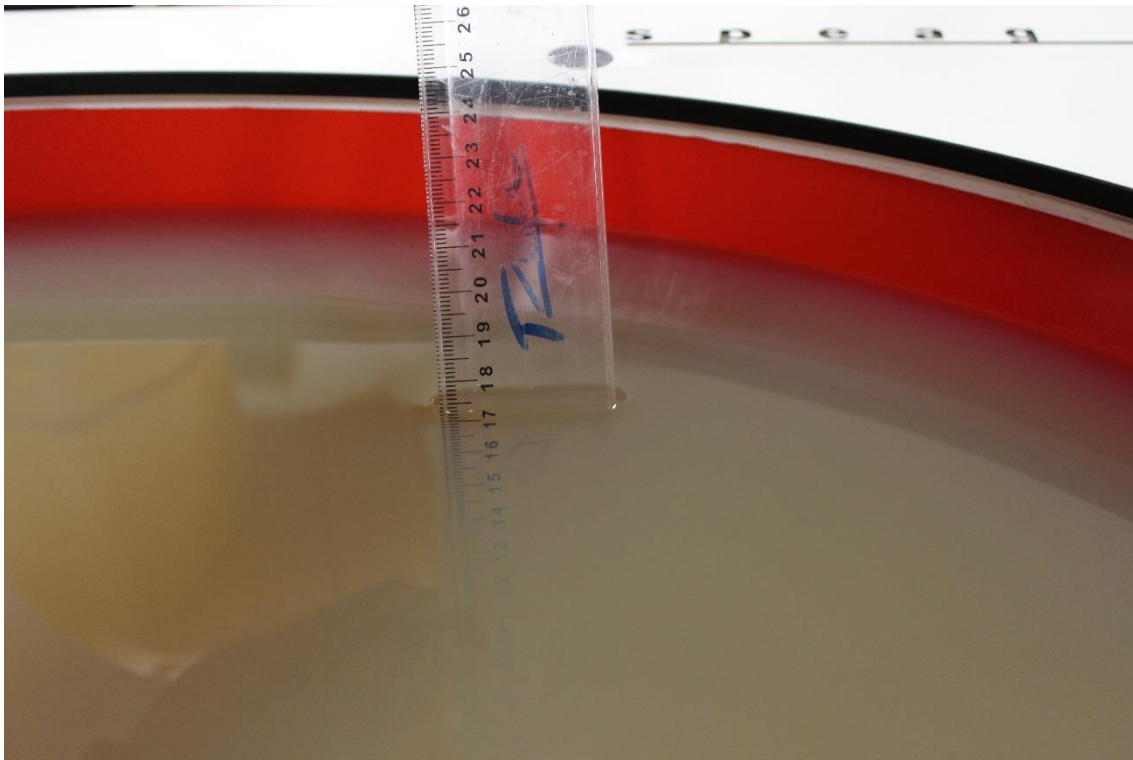


**F.3 Antenna host platform location and adjacent edge positions relative to the body**

| Antenna Front View  | Antenna Positions  |
|---|--|
|  <p>The image shows the front view of the antenna host platform. A ruler is placed above it for scale. The label on the antenna reads: <br/> <b>Company Name:</b> SkyCross Electronics (Shenzhen) Co., Ltd. <br/> <b>Shanghai Branch</b> <br/> <b>Antenna Type:</b> WIMAX / WLAN <br/> <b>Date:</b> <br/> <b>TEL:</b> +86-21-6434 8850 EXT.101</p> |  <p>The diagram shows the antenna host platform with its edges and faces labeled: <br/> <b>TOP EDGE</b> (top), <b>LEFT EDGE</b> (left), <b>RIGHT EDGE</b> (right), and <b>BOTTOM EDGE</b> (bottom). <br/> <b>FRONT FACE</b> is indicated in red text on the right side, and <b>BACK FACE</b> is indicated in red text with an arrow pointing to the top edge area.</p> |
| General Setup   |  |
|  <p>The photograph shows the general test setup. A yellow antenna host platform is mounted on a black metal frame. A green printed circuit board (PCB) is placed on a red surface to the right of the antenna.</p>  |  |

**F.4 Phantom liquid level during measurements**

ELI phantom Body liquid SAR Dasy SPEAG MBBL600-6000V6 Batch -160630-01



**End of the report**

**This page is intentionally left blank and marks the last page of the test report.**