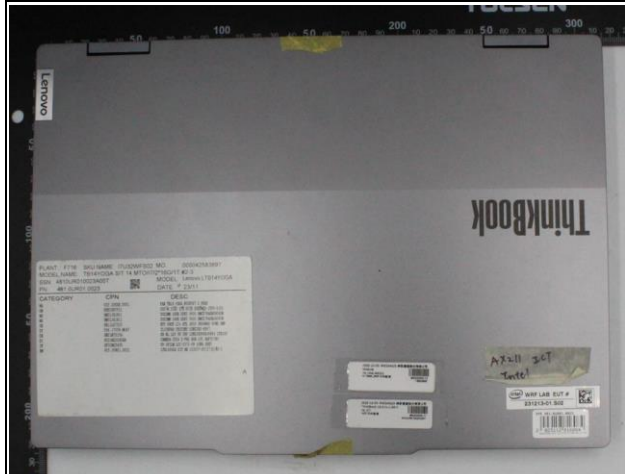


Annex G. Photographs

G.1 Test Sample



Front Face: 231213-01.S02



Back Face: 231213-01.S02



Screen Sample: 231213-01.S02



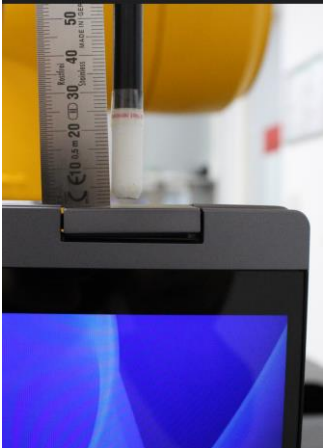

Keyboard Sample: 231213-01.S02



Laptop: 231213-01.S02

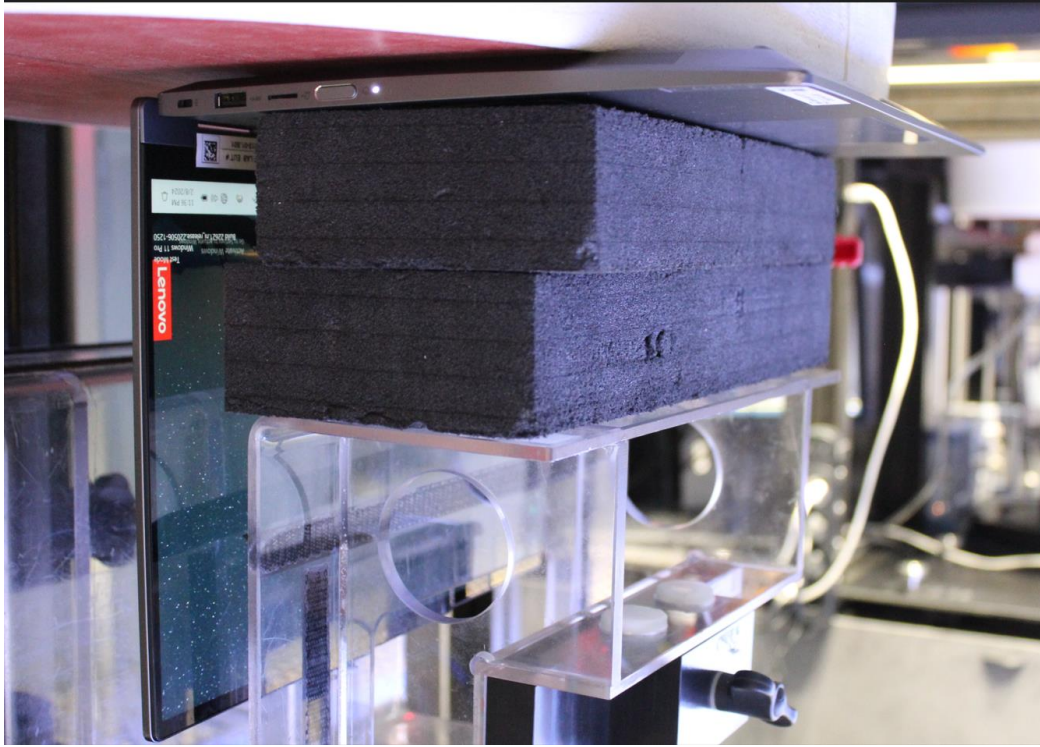


G.2 PD Test positions

Testing distance	Laptop position
 A close-up photograph showing a vertical ruler on the left side of a laptop. The ruler is marked in centimeters, with the number 50 clearly visible. A white probe or sensor is positioned vertically, touching the top edge of the laptop. The laptop screen is visible at the bottom, displaying a blue abstract pattern.	 A photograph showing a laptop placed on a dark, flat surface, likely a test bench. The laptop is open, and its screen displays the time 11:18. A white probe or sensor is positioned vertically, touching the top edge of the laptop. A yellow object is visible in the background.

G.3 SAR Test position

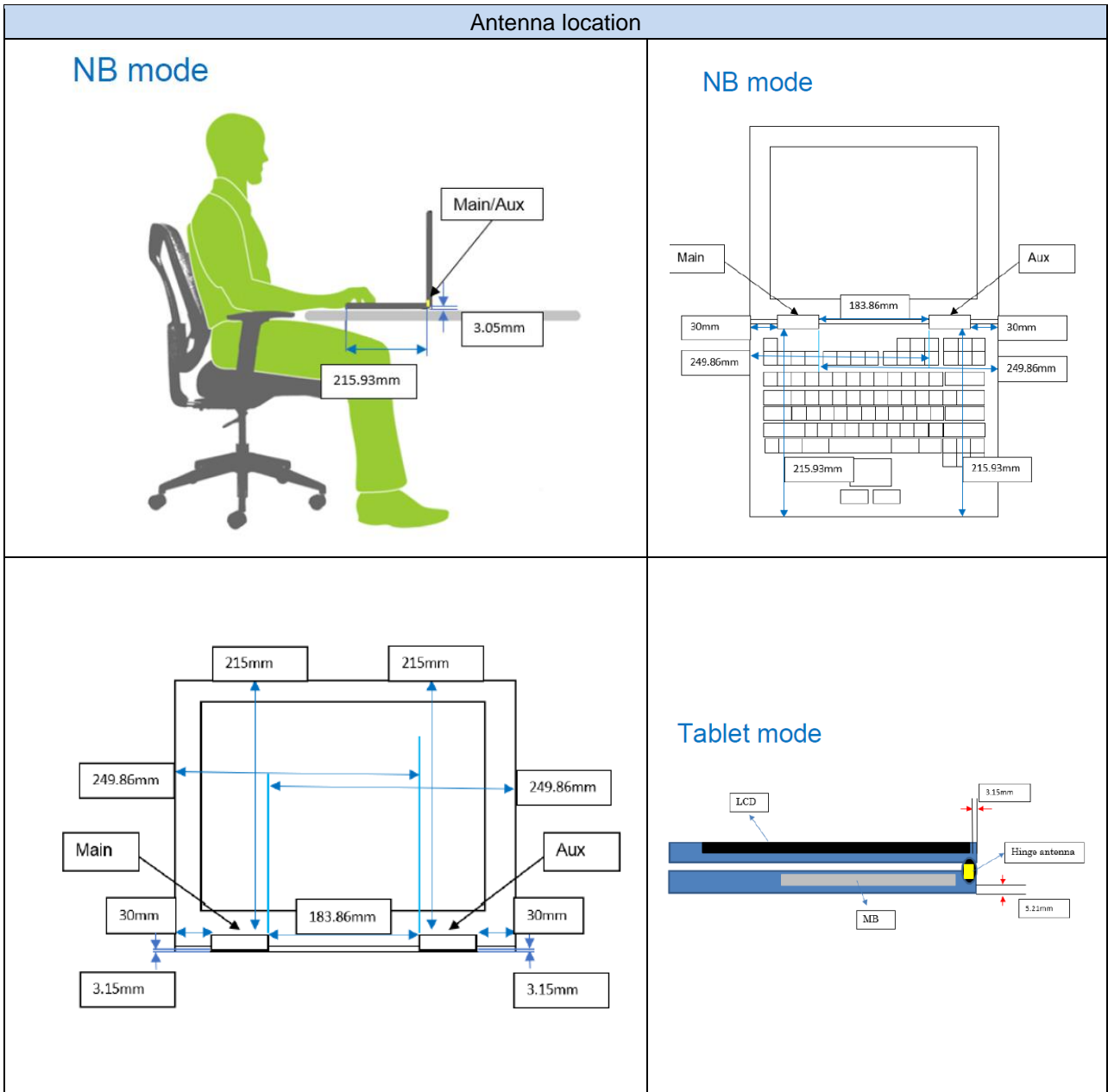
Laptop



Bottom Edge

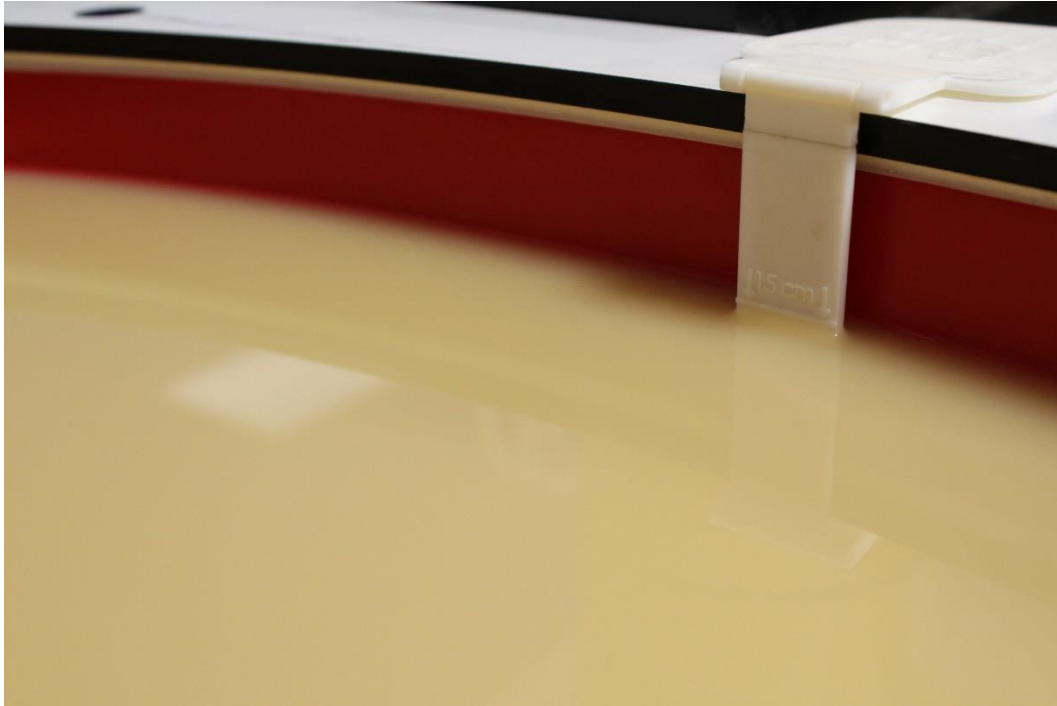


G.4 Antenna host platform location and adjacent edge positions relative to the body



G.5 Phantom liquid level during measurements

ELI phantom Head liquid SAR SPEAG HBBL600-10000V6 Batch - 230426-01



End of the report

This page is intentionally left blank and marks the last page of the test report.