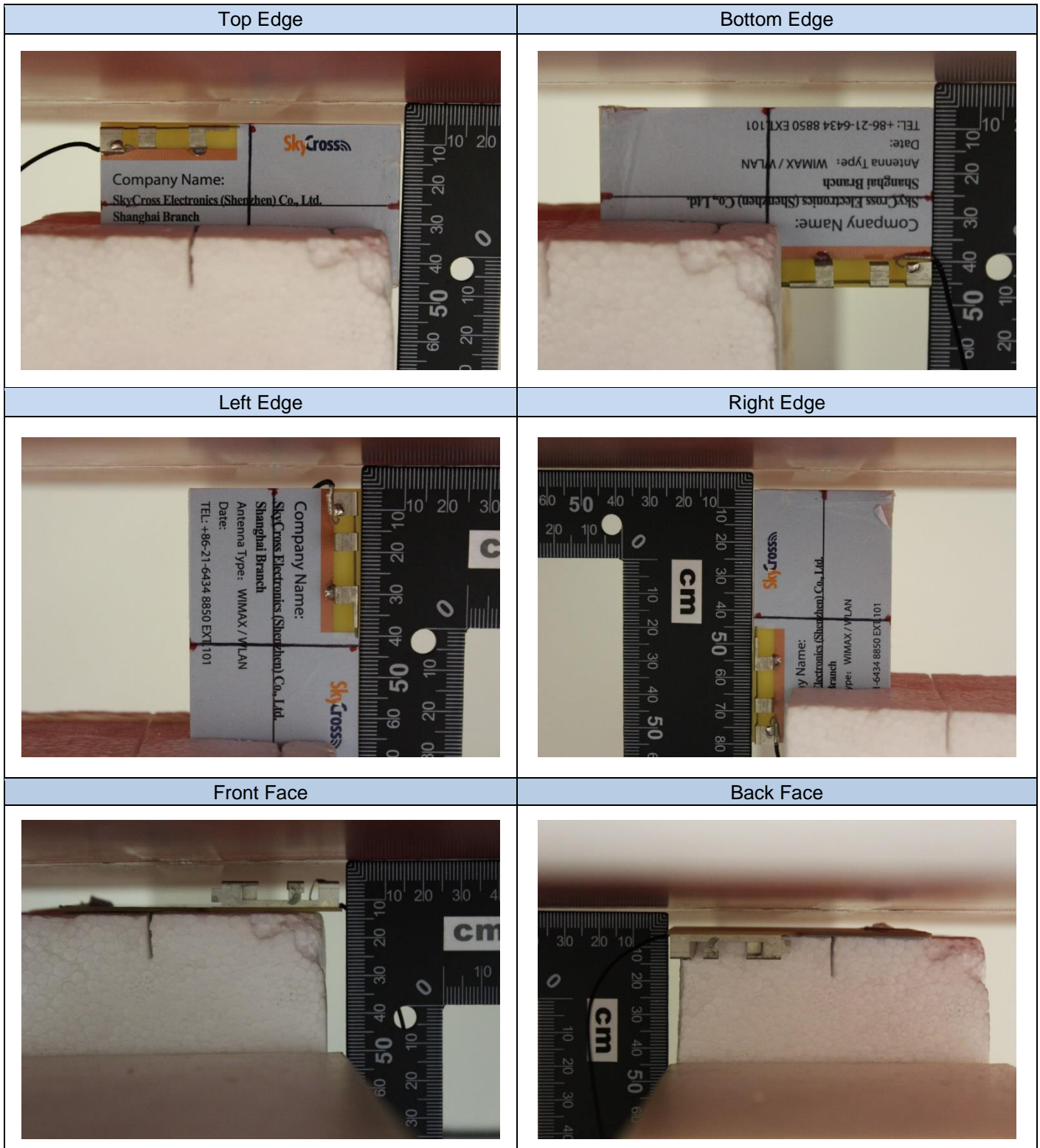


Annex F. Photographs


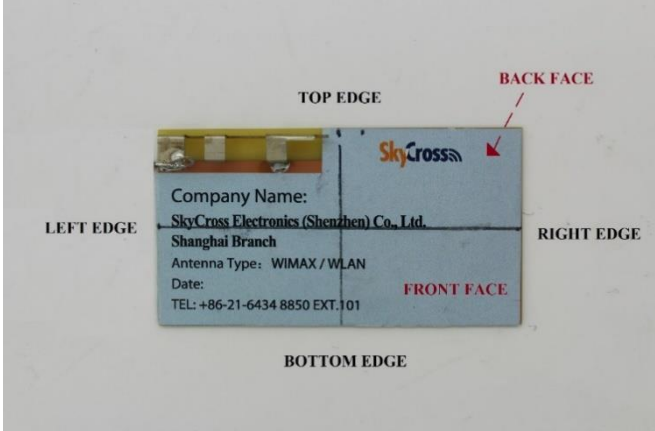
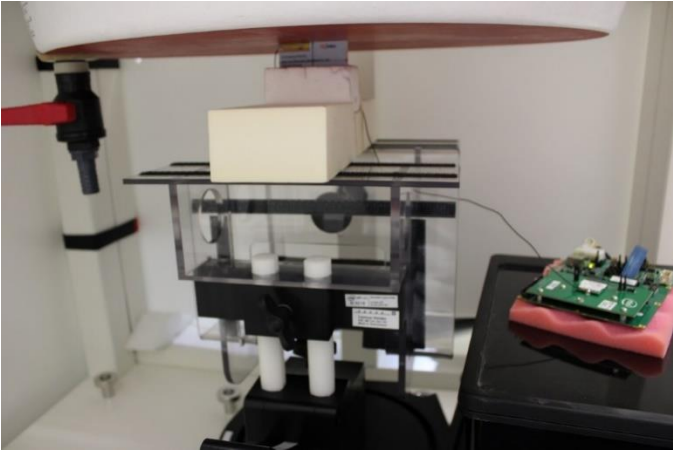
F.1 Test Sample



F.2 Test positions

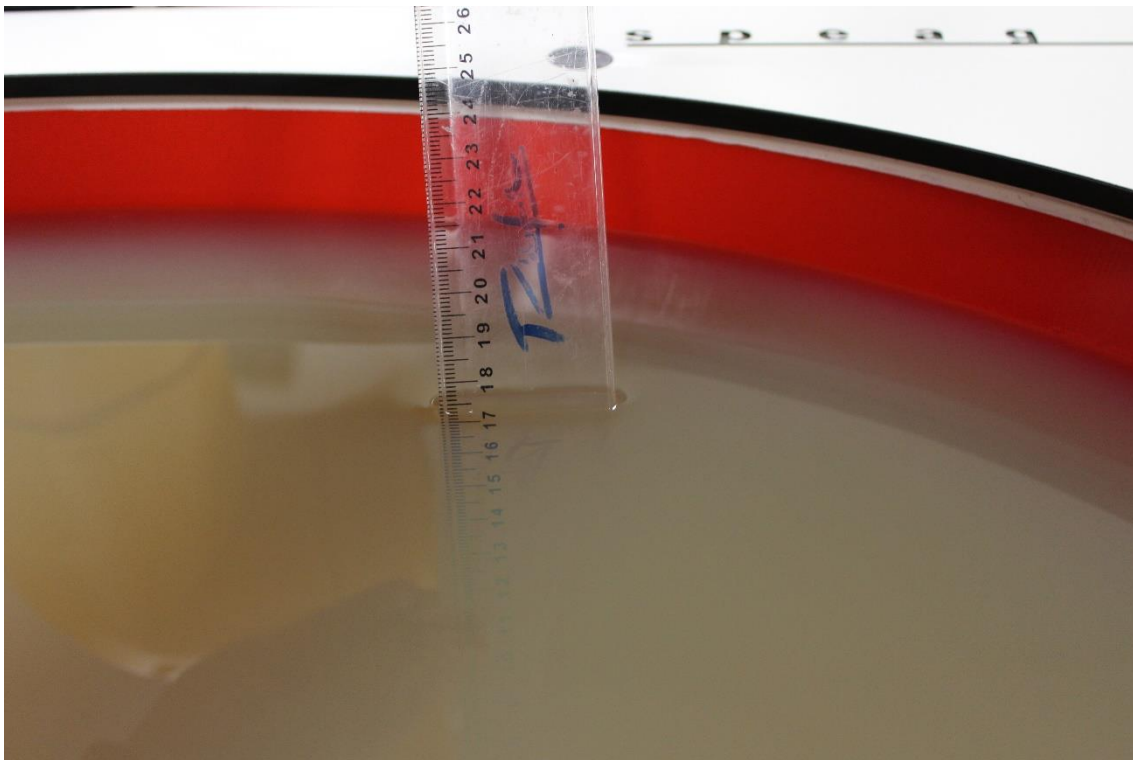


F.3 Antenna host platform location and adjacent edge positions relative to the body

Antenna Front View	Antenna Positions
 <p>The image shows the front view of the antenna host platform. A ruler is placed above it for scale. The label on the antenna contains the following information:</p> <ul style="list-style-type: none"> Company Name: SkyCross Electronics (Shenzhen) Co., Ltd. Shanghai Branch Antenna Type: WIMAX / WLAN Date: TEL: +86-21-6434 8850 EXT.101 	 <p>The diagram shows the antenna host platform with its edges and faces labeled:</p> <ul style="list-style-type: none"> TOP EDGE LEFT EDGE RIGHT EDGE BOTTOM EDGE FRONT FACE BACK FACE
General Setup	
 <p>The photograph shows the general test setup. A green printed circuit board (PCB) is mounted on a red foam pad on a black surface. A yellow antenna is connected to the board. The setup is positioned under a white probe stand with a red probe tip. A white box is visible in the background.</p>	

F.4 Phantom liquid level during measurements

ELI phantom Body liquid SAR Dasy SPEAG MBL600-6000V6 Batch -191014-02



End of the report

This page is intentionally left blank and marks the last page of the test report.