

# WiFi-6G Reference Antenna Datasheet

## 1. Antenna Specification

### 1.1. Antenna information

Manufacturer	Type	Antenna Part number	Band	Peak Gain (dBi)	Target Peak Gain (dBi)
Intel WRF Lab	Slot	WRF-8dBi-Slot-6G	<b>6.2GHz</b> 5925-6425MHz	7.80	8
			<b>6.5GHz</b> 6425-6525MHz	7.32	
			<b>6.6GHz</b> 6525-6875MHz	7.66	
			<b>7GHz</b> 6875-7125MHz	6.96	

### 1.2. Antenna Peak Gain Table

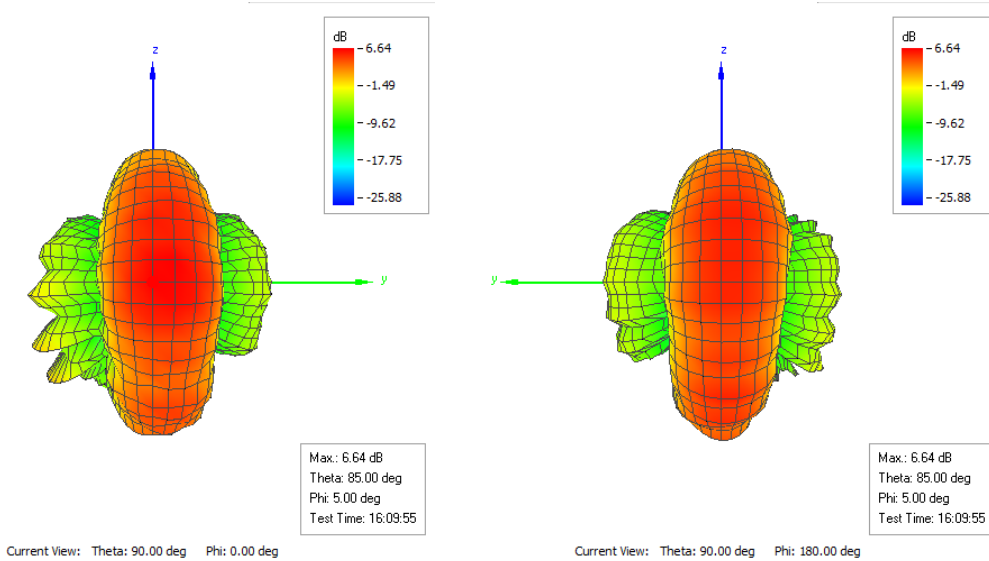
Frequency (MHz)	Peak Gain		
	Horizontal (Phi)	Vertical (Theta)	Total
	(dBi)	(dBi)	(dBi)
5925	-18.21	6.63	6.64
6425	-8.48	7.70	7.80
6525	-10.52	7.24	7.32
6875	-12.53	7.62	7.66
7125	-15.82	6.94	6.96

## 2. Antenna Radiation Patterns 5925 - 7200 MHz

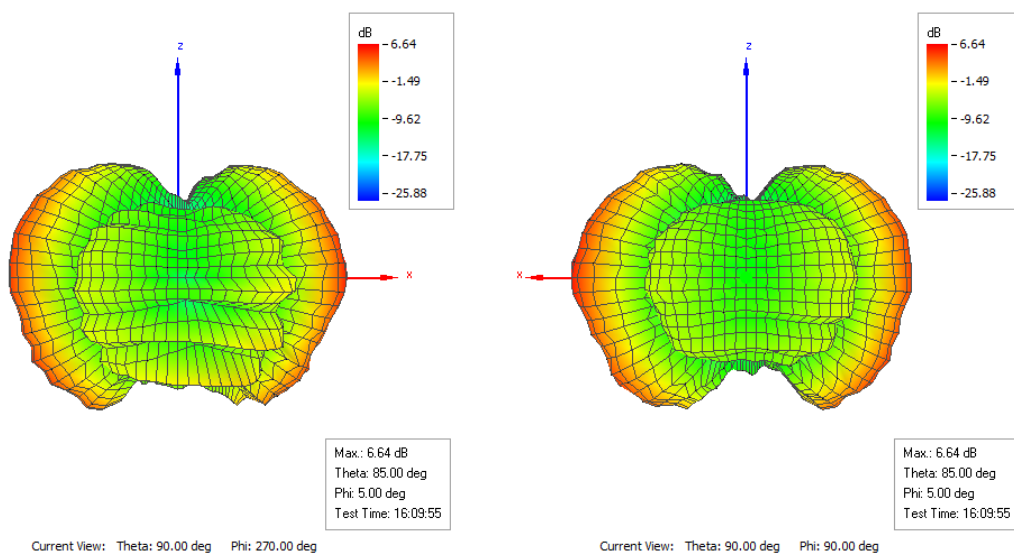
### 2.1. Pattern @5925MHz

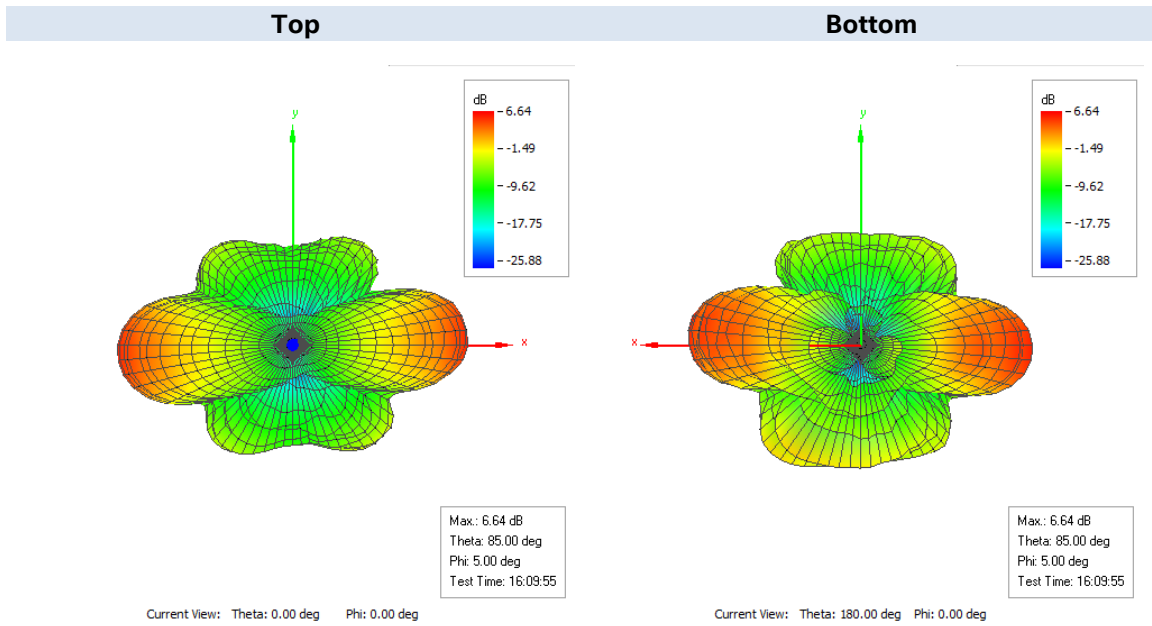
Frequency (MHz)	Peak Gain		
	Horizontal (Phi)	Vertical (Theta)	Total
	(dBi)	(dBi)	(dBi)
5925	-18.21	6.63	6.64

**Front** **Back**



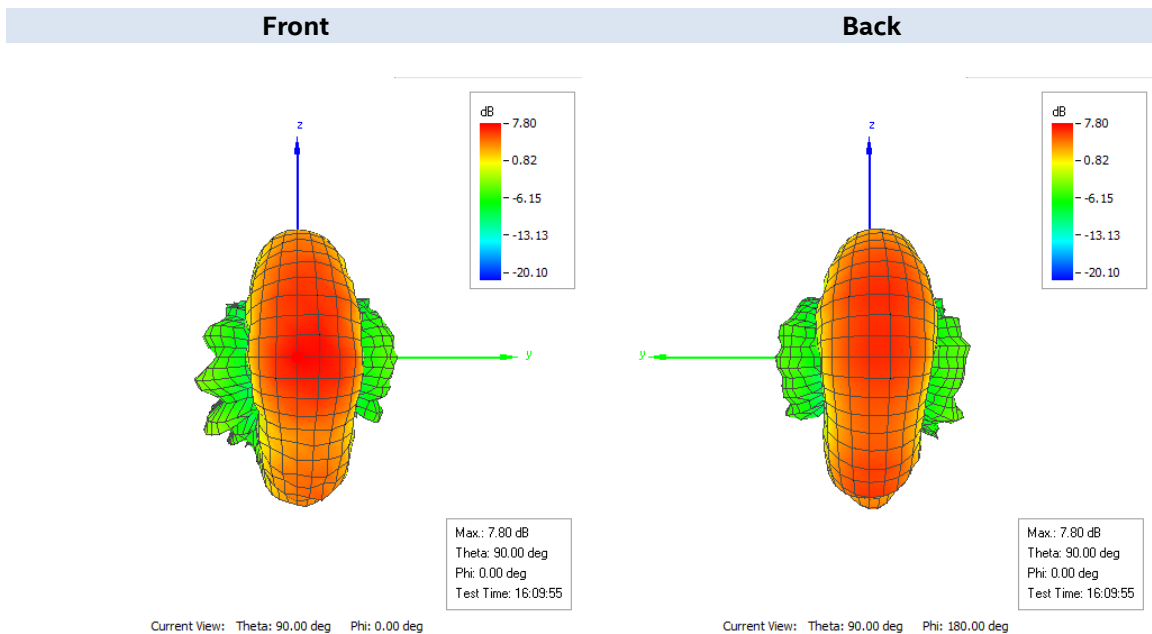
**Left** **Right**



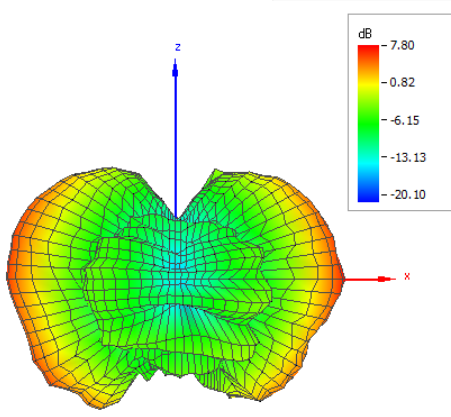


## 2.2. Pattern @6425MHz

Frequency (MHz)	Peak Gain		
	Horizontal (Phi)	Vertical (Theta)	Total
	(dBi)	(dBi)	(dBi)
6425	-8.48	7.70	7.80

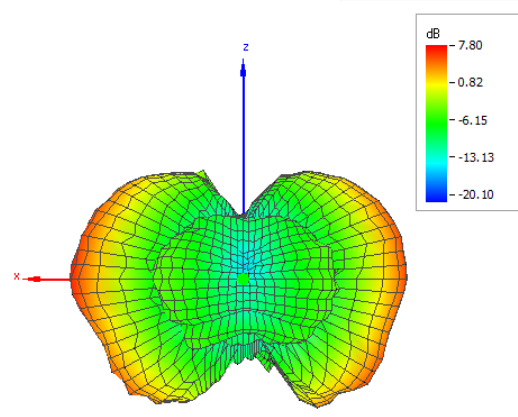


**Left** **Right**



Max.: 7.80 dB  
Theta: 90.00 deg  
Phi: 0.00 deg  
Test Time: 16:09:55

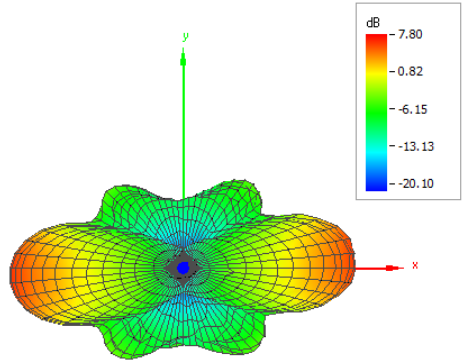
Current View: Theta: 90.00 deg Phi: 270.00 deg



Max.: 7.80 dB  
Theta: 90.00 deg  
Phi: 0.00 deg  
Test Time: 16:09:55

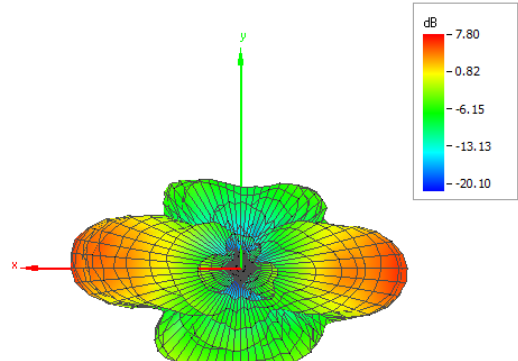
Current View: Theta: 90.00 deg Phi: 90.00 deg

**Top** **Bottom**



Max.: 7.80 dB  
Theta: 90.00 deg  
Phi: 0.00 deg  
Test Time: 16:09:55

Current View: Theta: 0.00 deg Phi: 0.00 deg



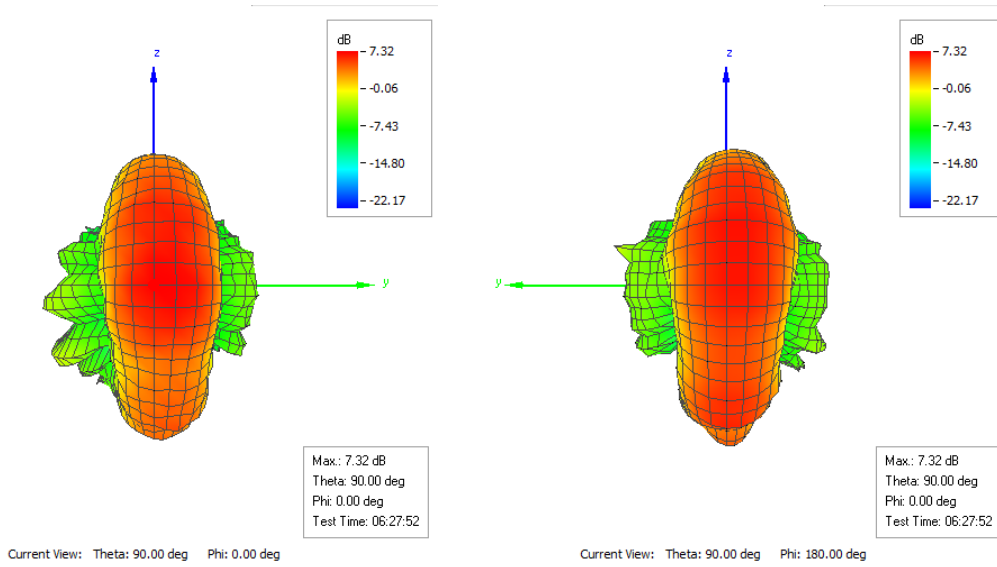
Max.: 7.80 dB  
Theta: 90.00 deg  
Phi: 0.00 deg  
Test Time: 16:09:55

Current View: Theta: 180.00 deg Phi: 0.00 deg

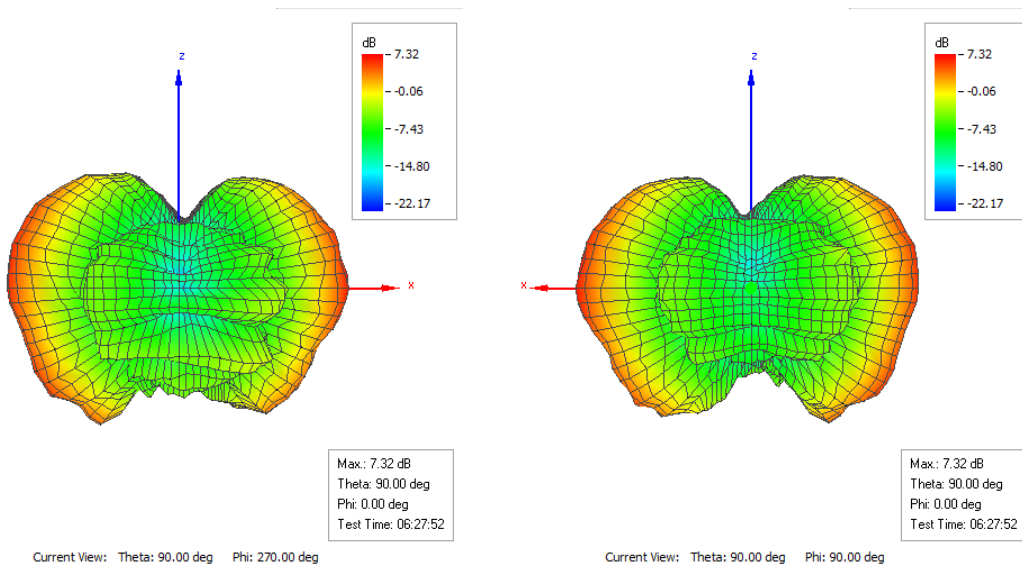
### 2.3. Pattern @6525MHz

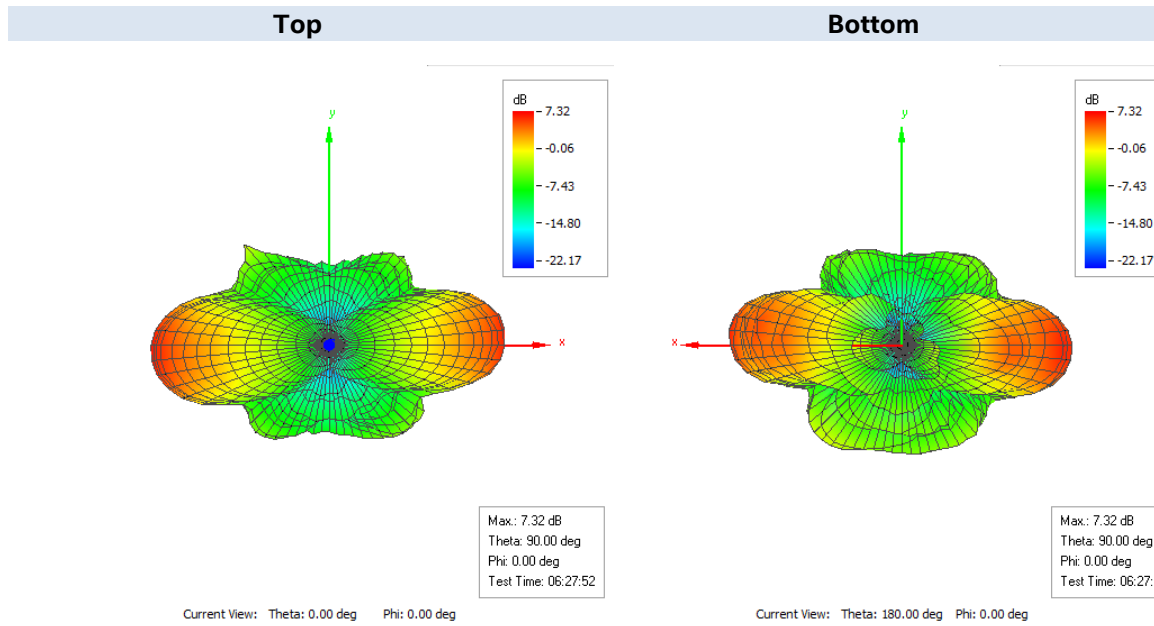
Frequency (MHz)	Peak Gain		
	Horizontal (Phi)	Vertical (Theta)	Total
	(dBi)	(dBi)	(dBi)
6525	-10.52	7.24	7.32

**Front** **Back**



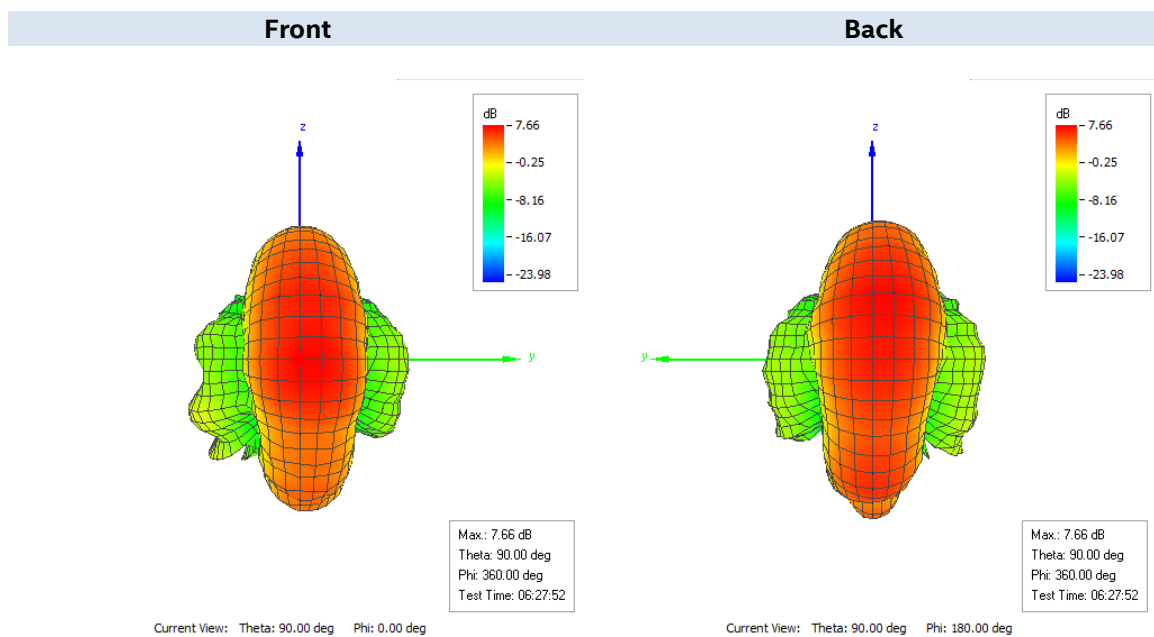
**Left** **Right**



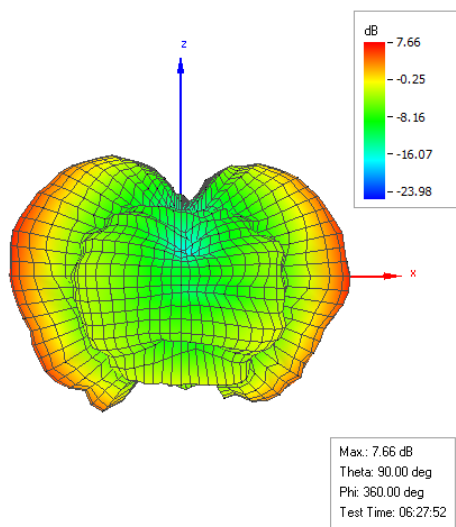


### 2.4. Pattern @6875MHz

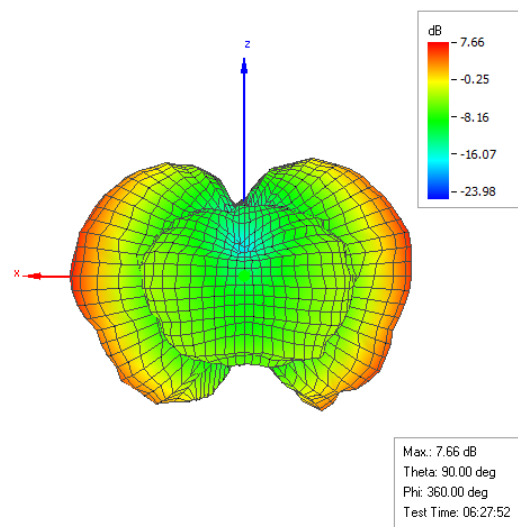
Frequency (MHz)	Peak Gain		
	Horizontal (Phi)	Vertical (Theta)	Total
	(dBi)	(dBi)	(dBi)
6875	-12.53	7.62	7.66



**Left** **Right**

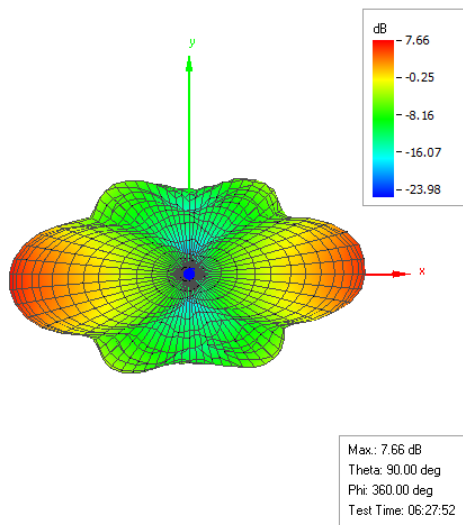


Current View: Theta: 90.00 deg Phi: 270.00 deg

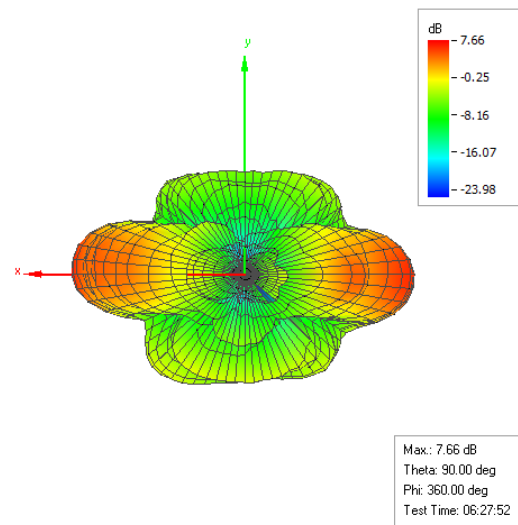


Current View: Theta: 90.00 deg Phi: 90.00 deg

**Top** **Bottom**



Current View: Theta: 0.00 deg Phi: 0.00 deg

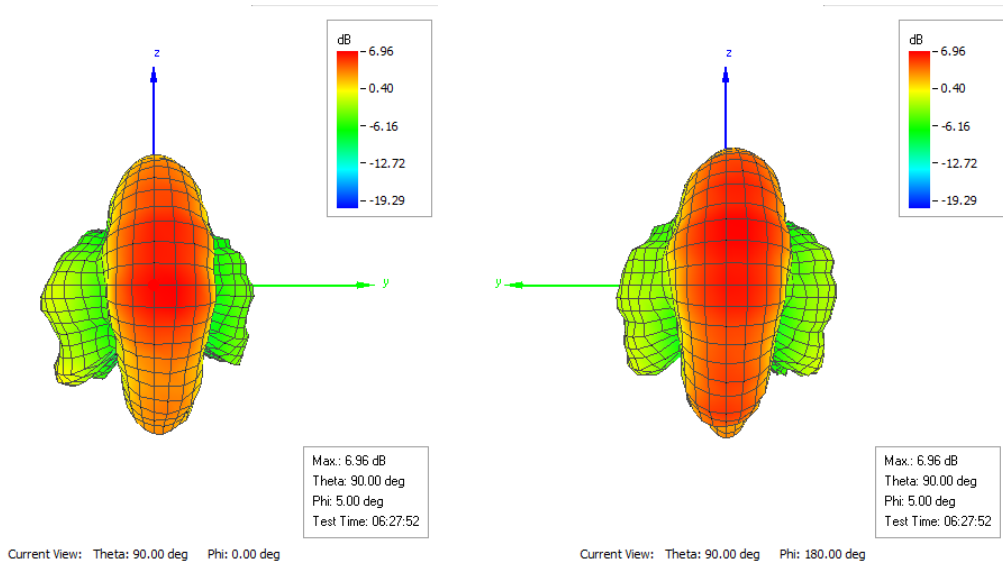


Current View: Theta: 180.00 deg Phi: 0.00 deg

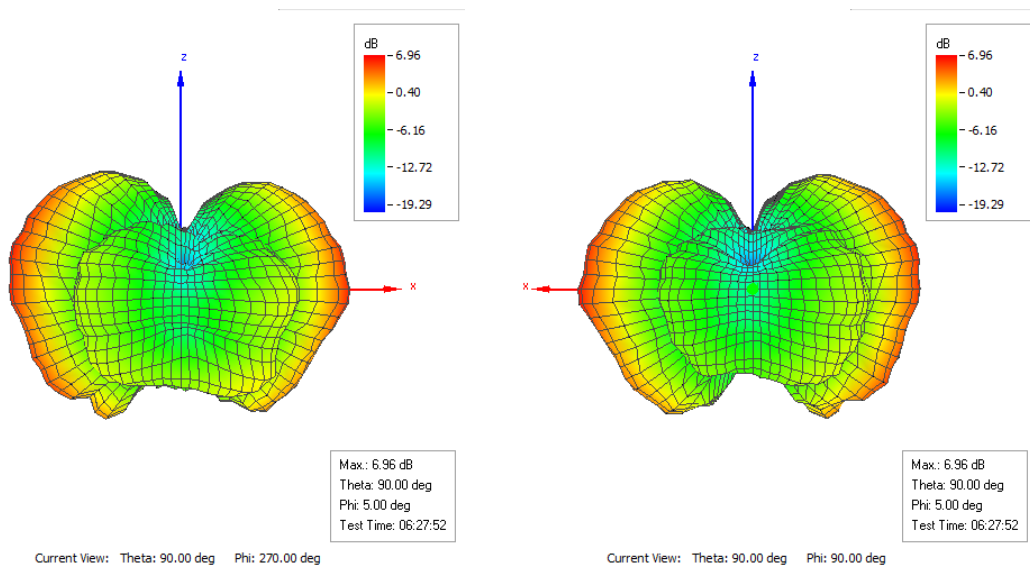
### 2.5. Pattern @7125MHz

Frequency (MHz)	Peak Gain		
	Horizontal (Phi)	Vertical (Theta)	Total
	(dBi)	(dBi)	(dBi)
7125	-15.82	6.94	6.96

**Front** **Back**

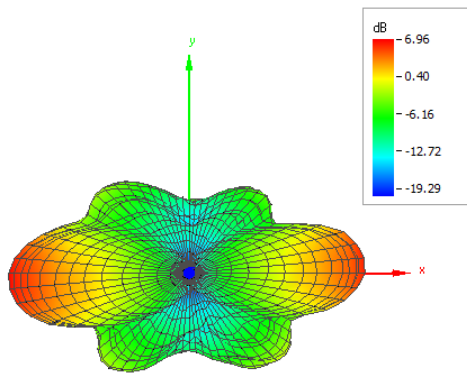


**Left** **Right**



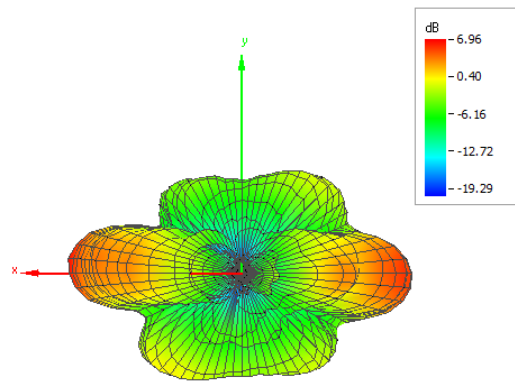


**Top** **Bottom**



Max.: 6.96 dB  
Theta: 90.00 deg  
Phi: 5.00 deg  
Test Time: 06:27:52

Current View: Theta: 0.00 deg Phi: 0.00 deg



Max.: 6.96 dB  
Theta: 90.00 deg  
Phi: 5.00 deg  
Test Time: 06:27:52

Current View: Theta: 180.00 deg Phi: 0.00 deg