

# WiFi-5G Reference Antenna Datasheet

## 1. Antenna Specification

### 1.1. Antenna information

Manufacturer	Type	Antenna Part number	Band	Peak Gain (dBi)	Target Peak Gain (dBi)
Intel WRF Lab	Slot	WRF-8dBi-Slot-5G	<b>5.2GHz</b> 5.150–5.250MHz	7.67	8
			<b>5.4GHz</b> 5250-5470MHz	7.81	
			<b>5.6GHz</b> 5470-5725MHz	7.84	
			<b>5.8GHz</b> 5725-5925MHz	8.29	

### 1.2. Antenna Peak Gain Table

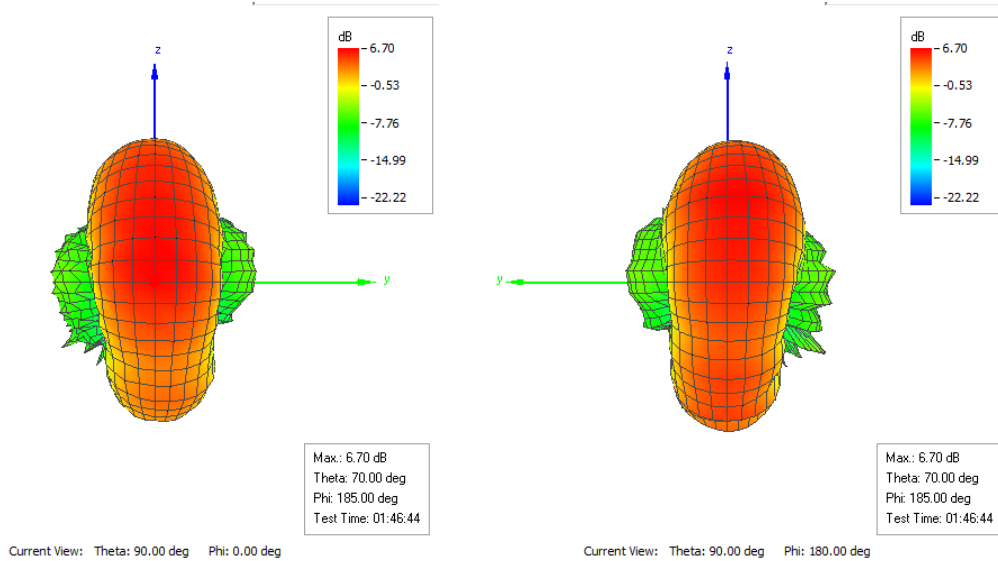
Frequency (MHz)	Peak Gain		
	Horizontal (Phi)	Vertical (Theta)	Total
	(dBi)	(dBi)	(dBi)
5150	-12.67	6.65	6.70
5250	-12.35	7.62	7.67
5470	-7.26	7.67	7.81
5725	-10.69	7.77	7.84
5850	-16.44	8.27	8.29

## 2. Antenna Radiation Patterns 5150 - 5925 MHz

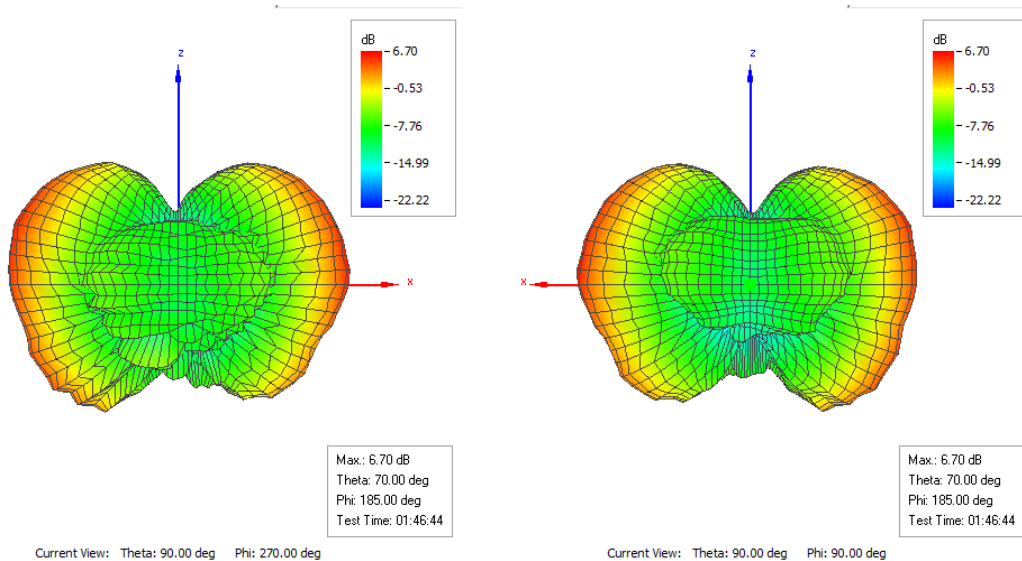
### 2.1. Pattern @5150MHz

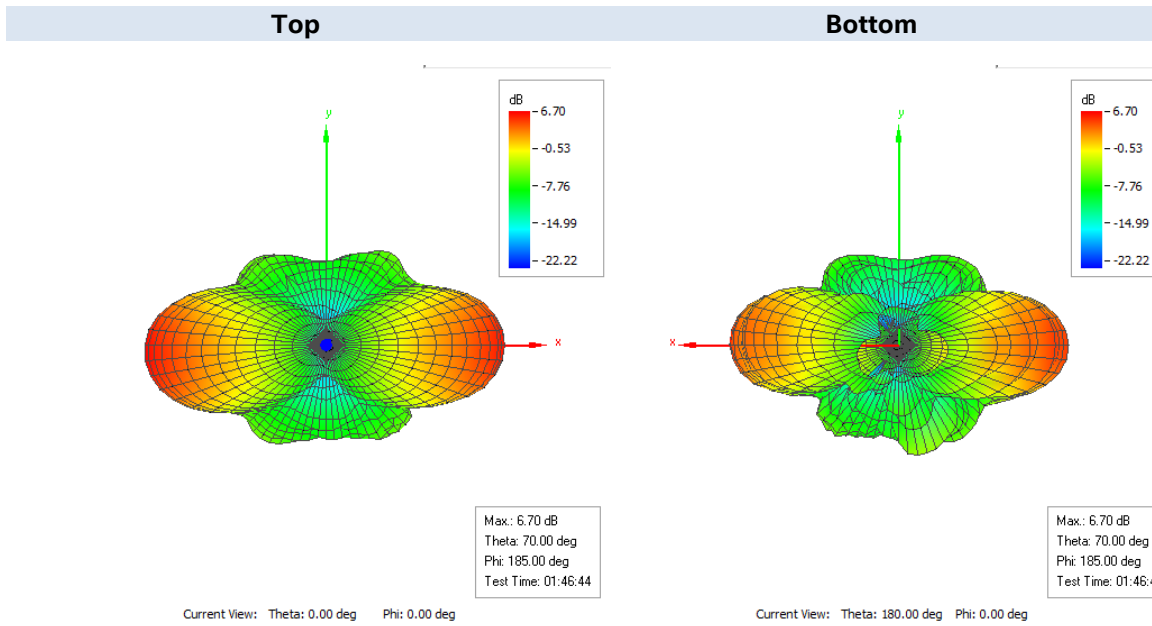
Frequency (MHz)	Peak Gain		
	Horizontal (Phi)	Vertical (Theta)	Total
	(dBi)	(dBi)	(dBi)
5150	-12.67	6.65	6.70

**Front** **Back**



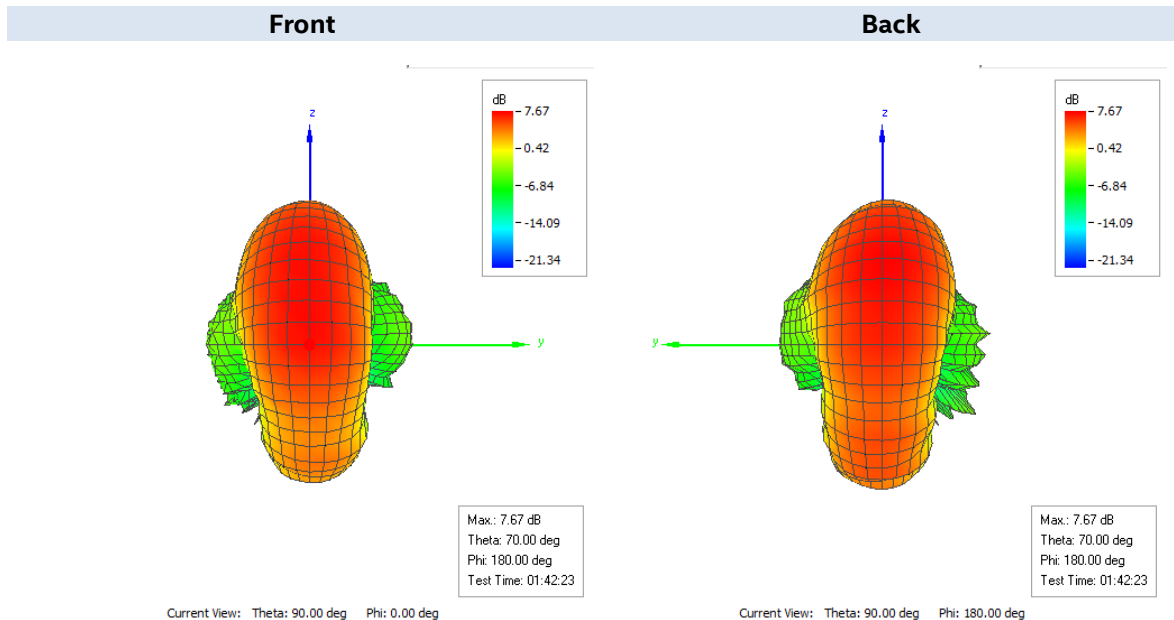
**Left** **Right**



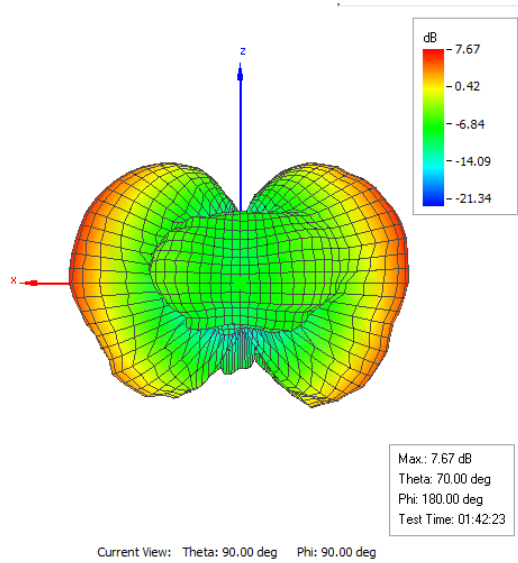
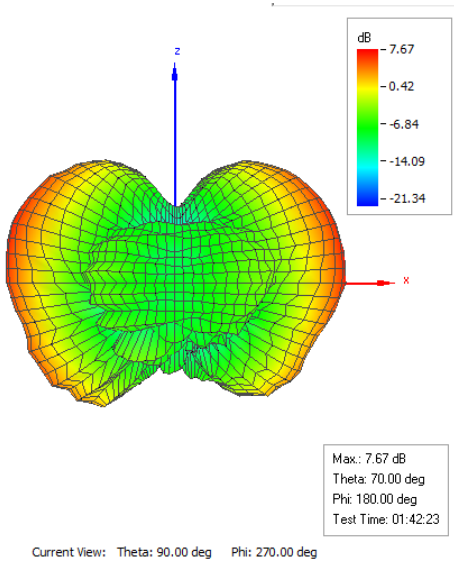


## 2.2. Pattern @5250MHz

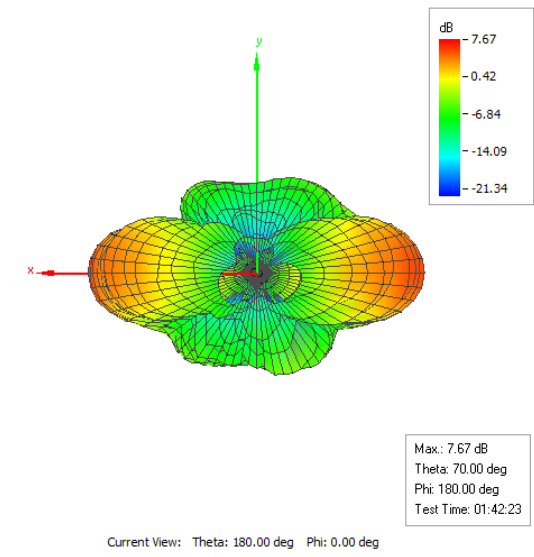
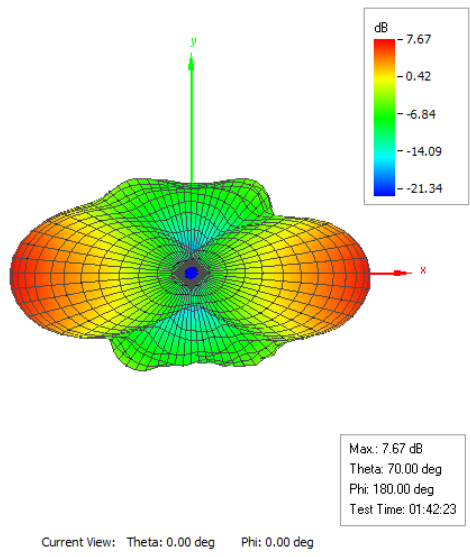
Frequency (MHz)	Peak Gain		
	Horizontal (Phi) (dBi)	Vertical (Theta) (dBi)	Total (dBi)
5250	-12.35	7.62	7.67



**Left** **Right**



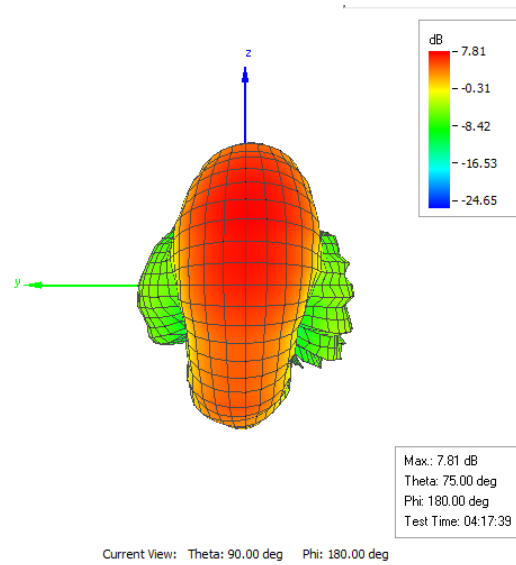
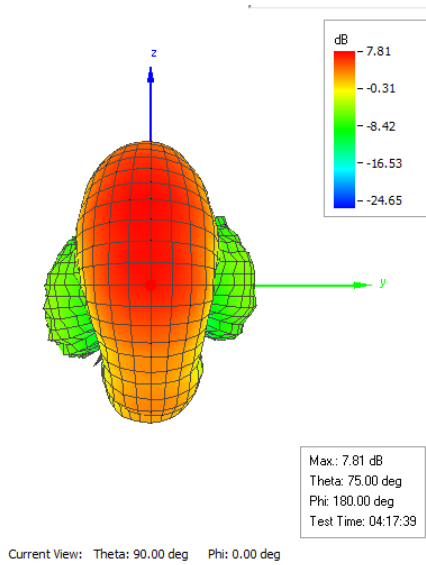
**Top** **Bottom**



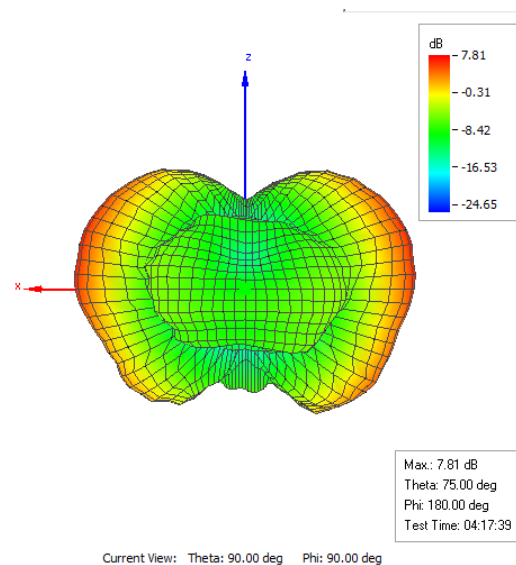
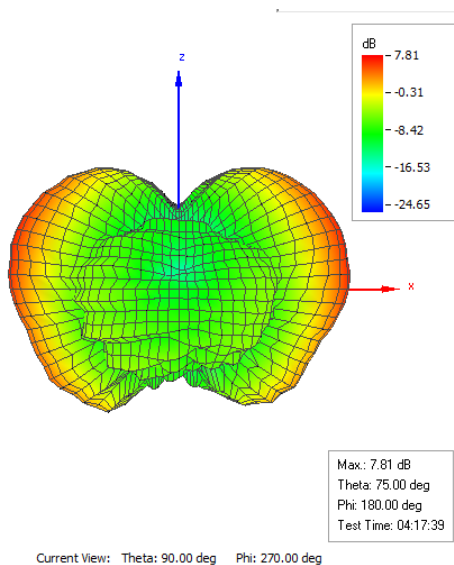
### 2.3. Pattern @5470MHz

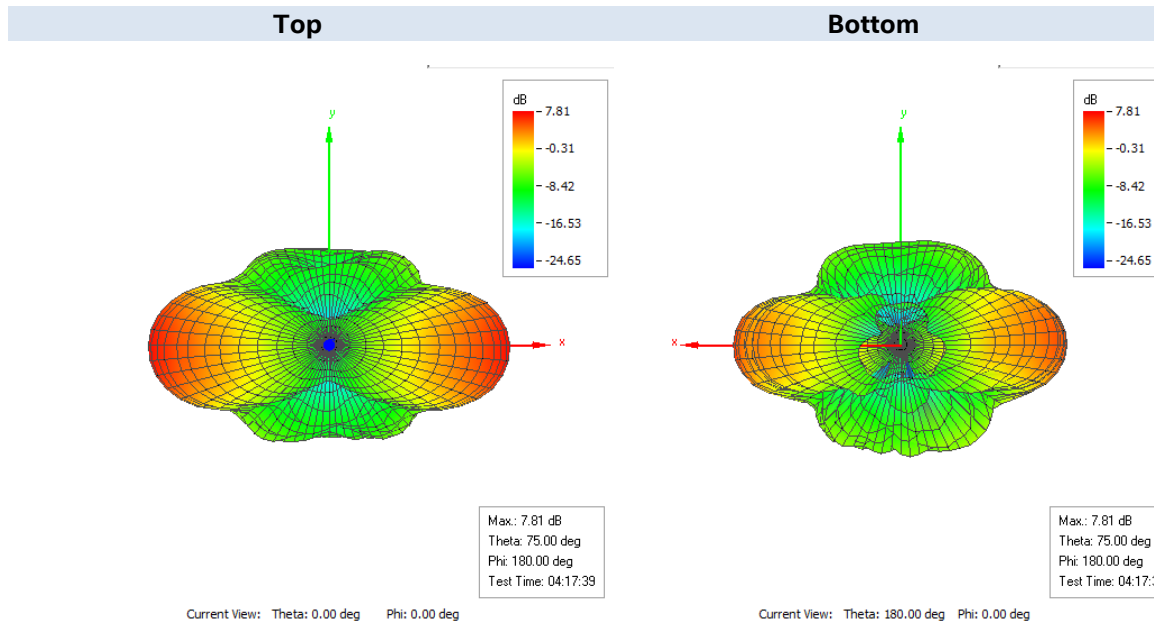
Frequency (MHz)	Peak Gain		
	Horizontal (Phi)	Vertical (Theta)	Total
	(dBi)	(dBi)	(dBi)
5470	-7.26	7.67	7.81

**Front** **Back**



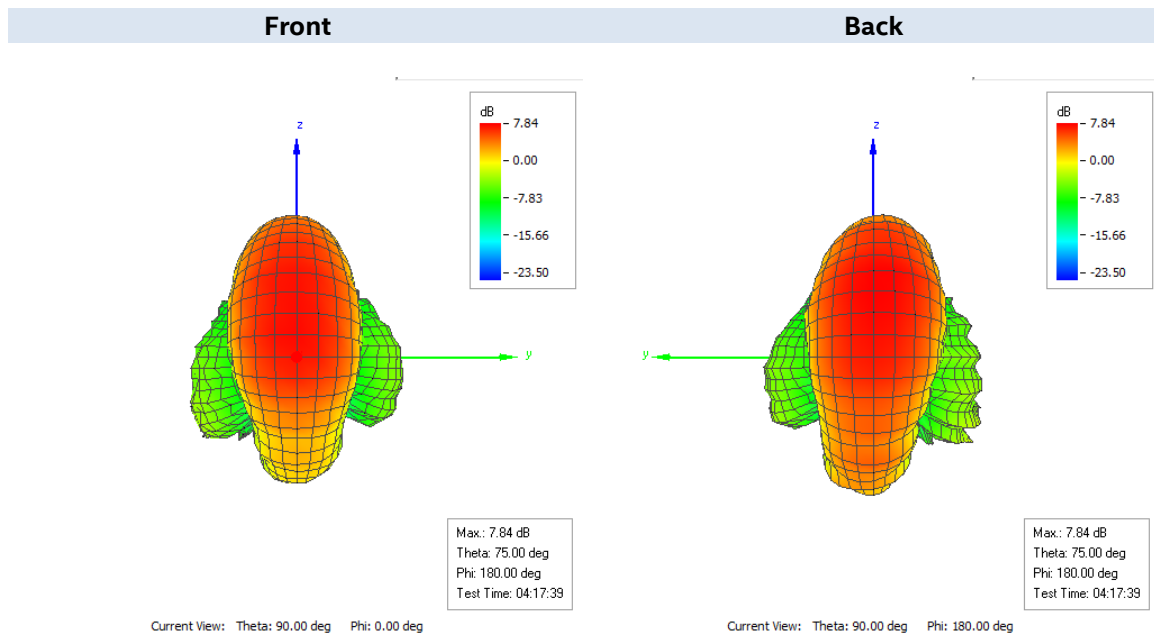
**Left** **Right**



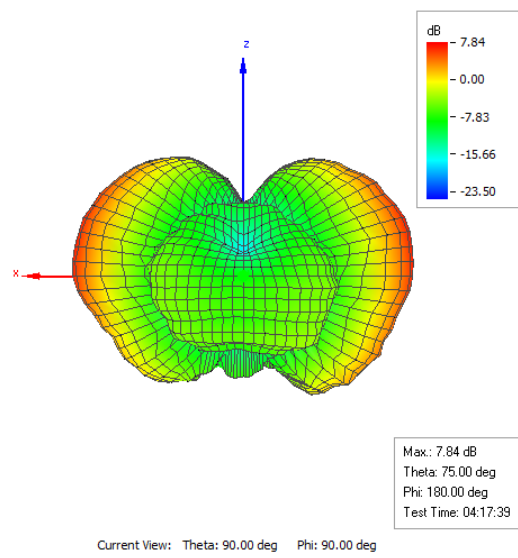
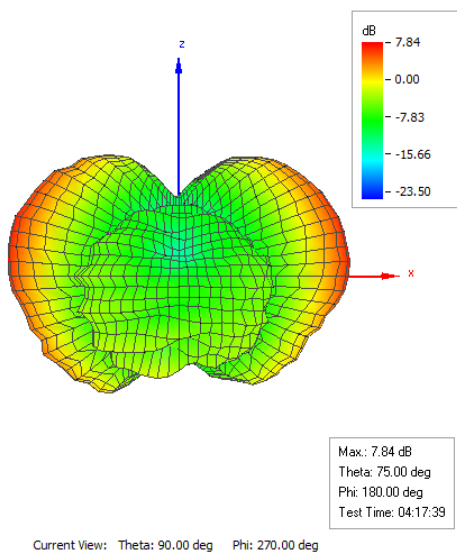


### 2.4. Pattern @5725MHz

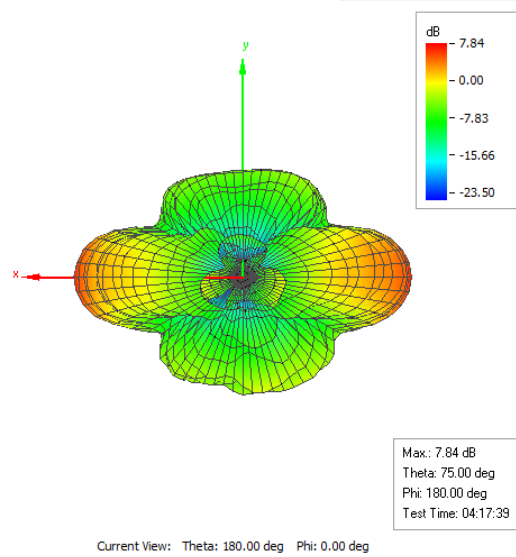
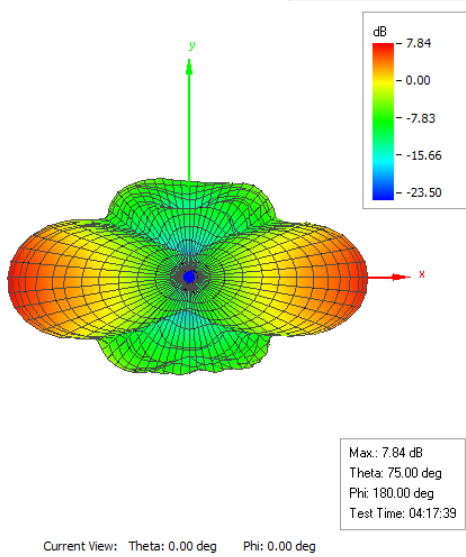
Frequency (MHz)	Peak Gain		
	Horizontal (Phi)	Vertical (Theta)	Total
	(dBi)	(dBi)	(dBi)
5725	-10.69	7.77	7.84



**Left** **Right**

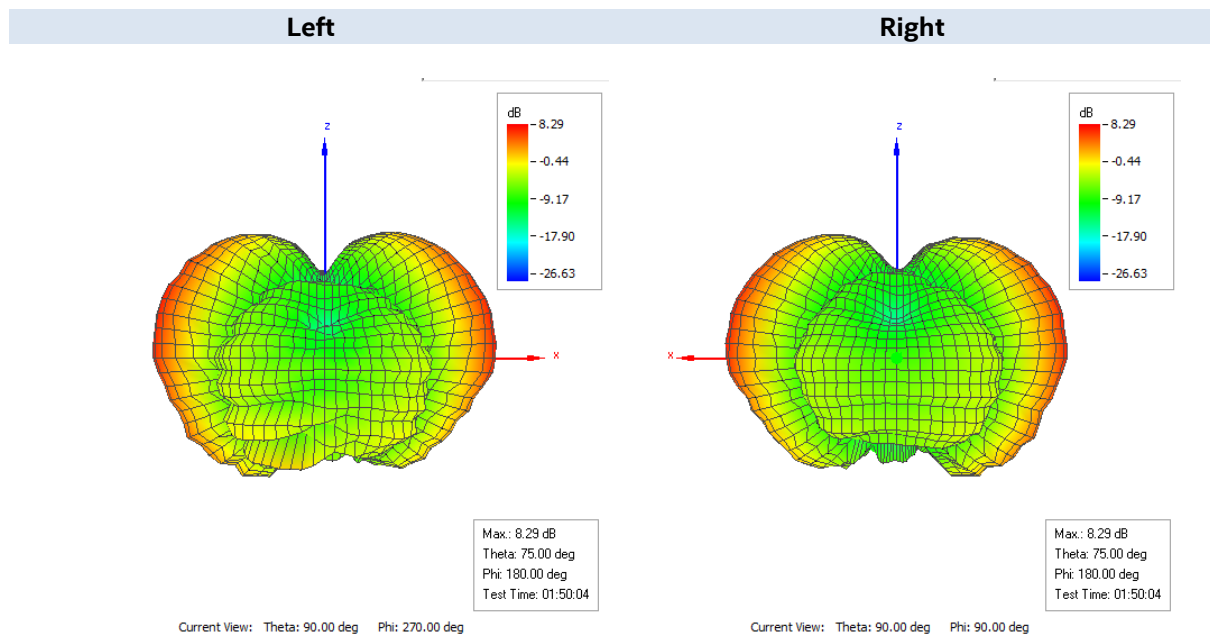
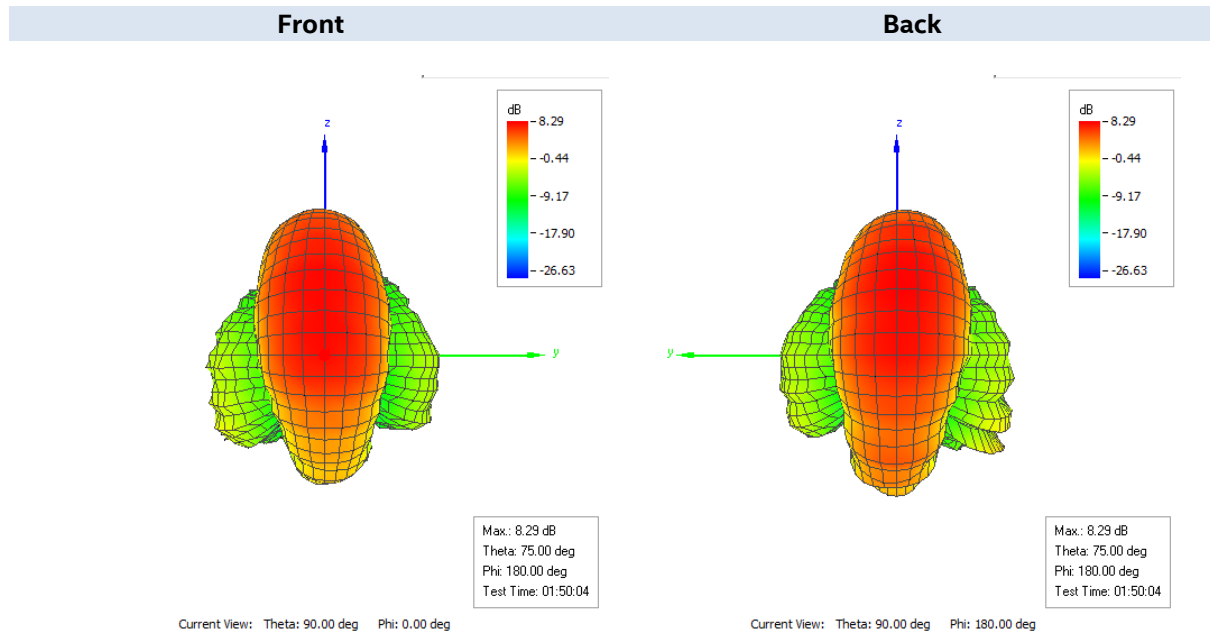


**Top** **Bottom**



### 2.5. Pattern @5850MHz

Frequency (MHz)	Peak Gain		
	Horizontal (Phi)	Vertical (Theta)	Total
	(dBi)	(dBi)	(dBi)
5850	-16.44	8.27	8.29





**Top** **Bottom**

