

ANTENNA INFORMATION

OEM	Lenovo
ODM	Wistron
Platform model name	TP00137A; TP00137B;TP00137C;TP00137D
Intel platform (ex: Yes, No or NA)	Yes
Platform type (ex: regular NB, convertible PC, AIO...etc)	Convertible PC
SAR minimum separation (mm)	2.1

Antenna manufacturer	AWAN	
Address	B2-C, No. 207-1, Sec. 3, Bei-Hsin Rd., Xindian Dist., New Taipei City, Taiwan (R.O.C.)	
Antenna Part number	Main: 025.901WZ.0001	Aux: 025.901X0.0001
Antenna type (ex: PIFA, Dipole...etc)	PIFA	

Antenna Peak gain w/ cable loss (dBi)*										
	2.4GHz 2400-2483.5 MHz	5.2GHz 5150-5250MHz	5.3GHz 5250-5350MHz	5.6GHz 5470-5725MHz	5.8GHz 5725-5850MHz	5.9GHz 5850-5895MHz	6.2GHz 5925-6425MHz	6.5GHz 6425-6525MHz	6.7GHz 6525-6875MHz	7.0 GHz 6875-7125MHz
Main	1.72	-0.06	-0.06	2.02	2.08	2.15	2.26	0.65	1.04	0.39
Aux	0.65	2.26	1.91	2.21	2.35	2.35	2.26	1.7	1.65	1.55

Cable Assembly Part Number and Information					
	Cable PN	Cable length(cm)	Cable diameter(mm)	Impedance(ohm)	Connector type
Main	Shen-Yu/YFC/KAIBO/ GBE	10.8	1.13	50	I-Pex
Aux	Shen-Yu/YFC/KAIBO/ GBE	23.2	1.13	50	I-Pex

* 3D Antenna Peak Gain required being test in system basis.

Table of Contents

Cover page	1
Annex A. Photographs	
A.1 Setup Photo.....	3
A.2 Test sample.....	4
Annex B. Antenna Location	
B.1 Antenna Host Platform Location Information.....	6
B.2 Antenna dimensional information for SAR evaluation.....	8

Annex A. Photographs

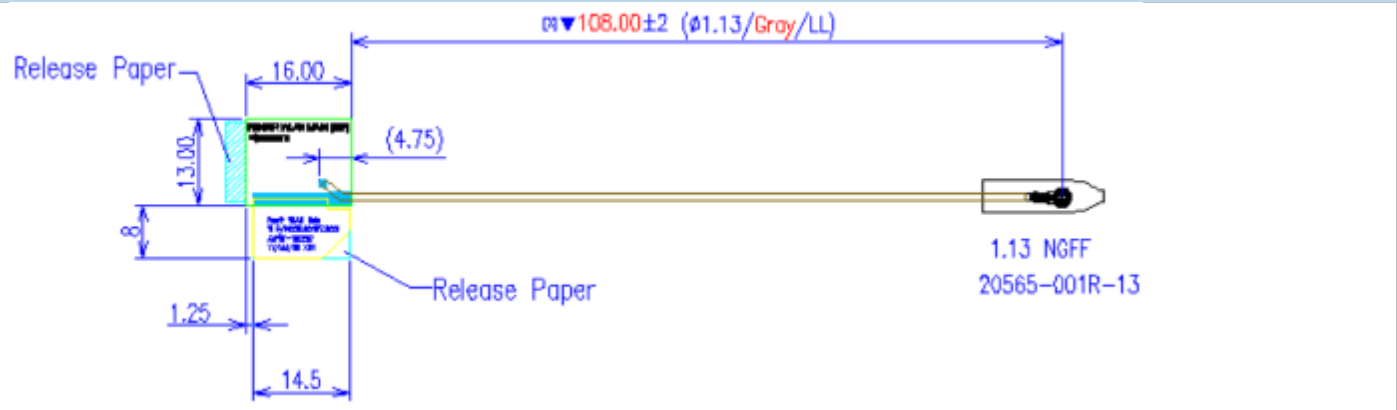
A.1 Setup Photo



A.2 Test sample

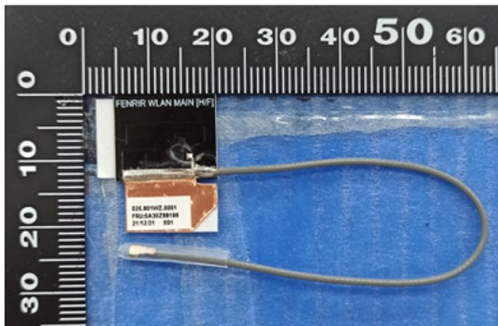
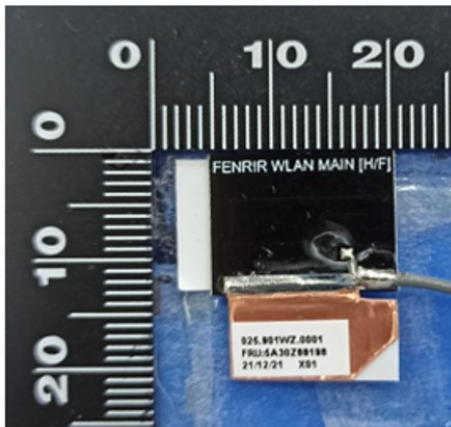
Main Antenna

Antenna Drawing

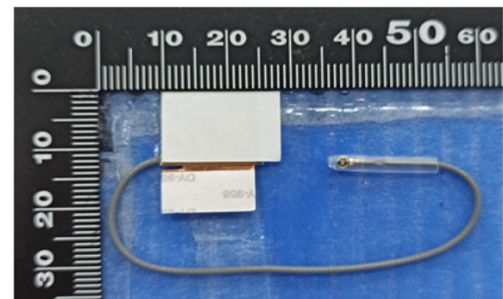
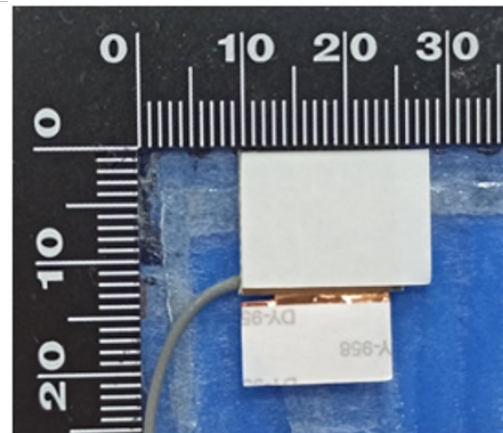


Antenna Photo

Front

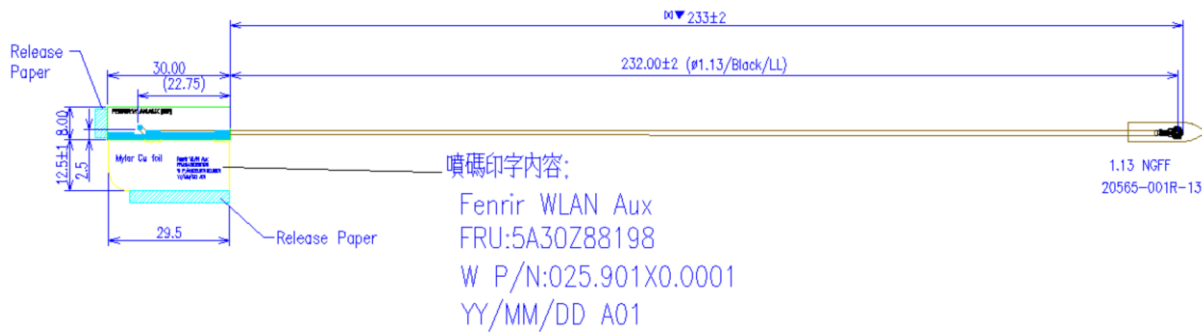


Back



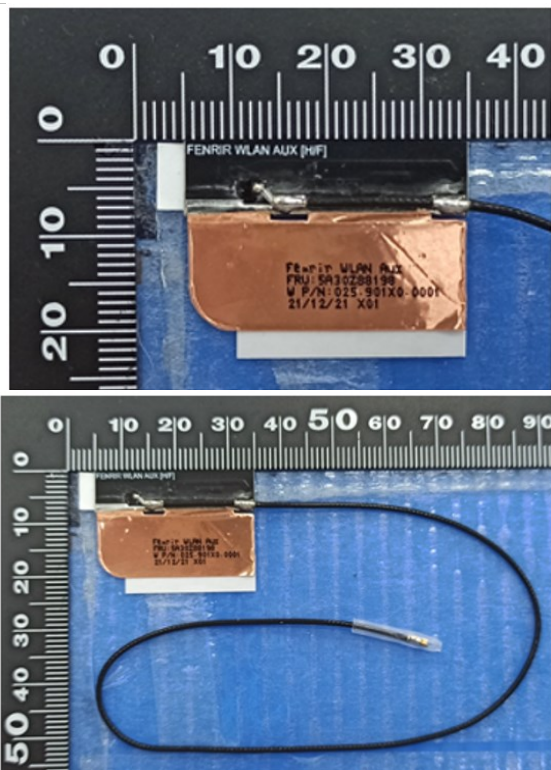
Aux Antenna

Antenna Drawing

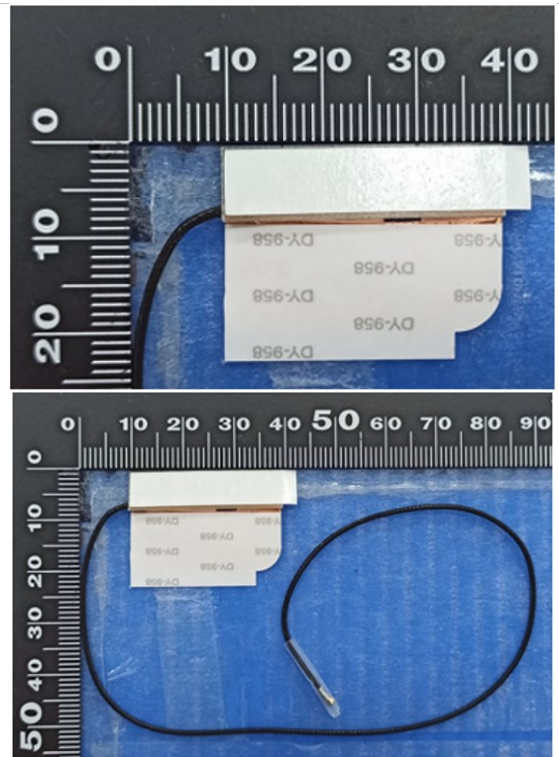


Antenna Photo

Front



Back

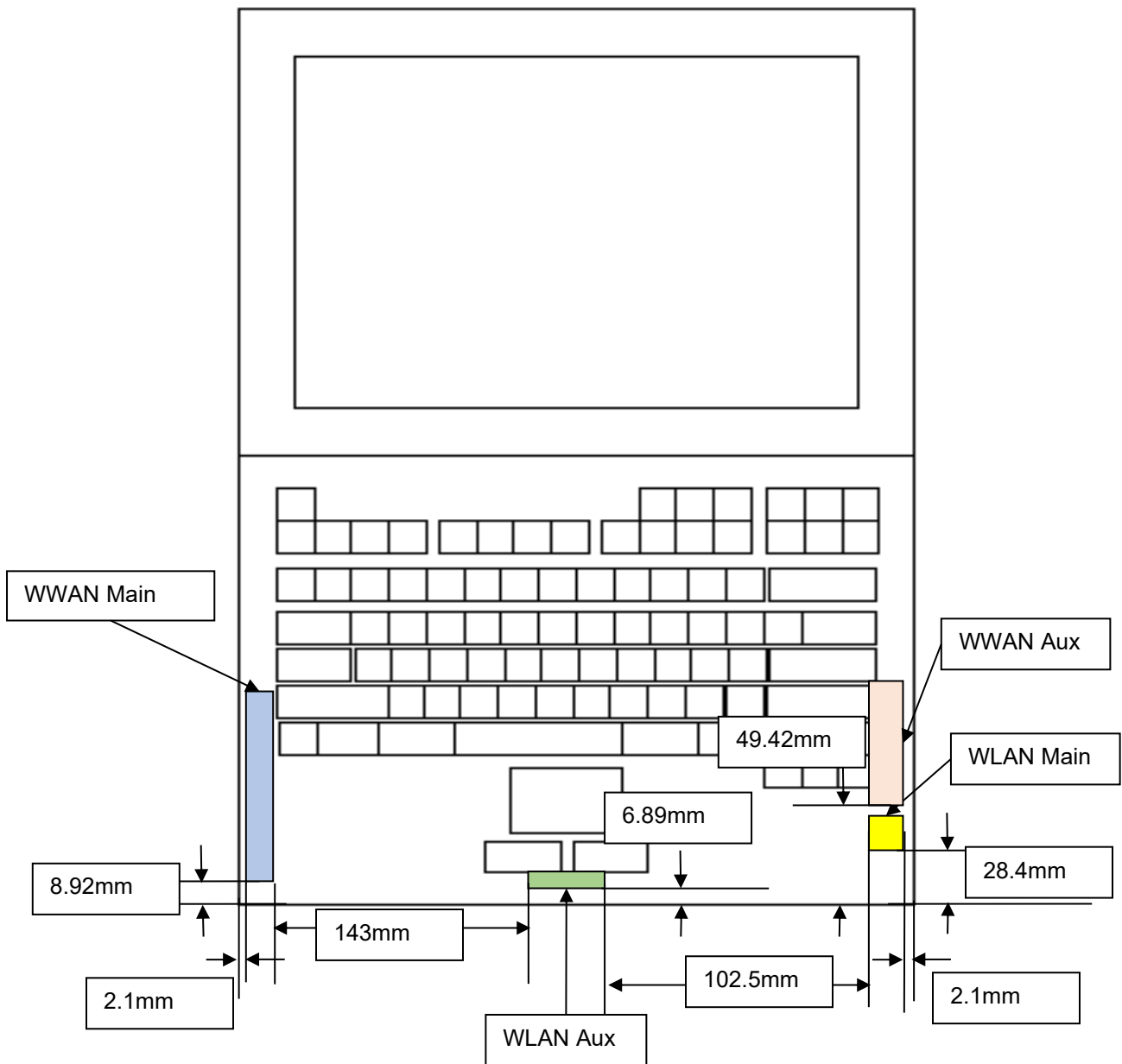


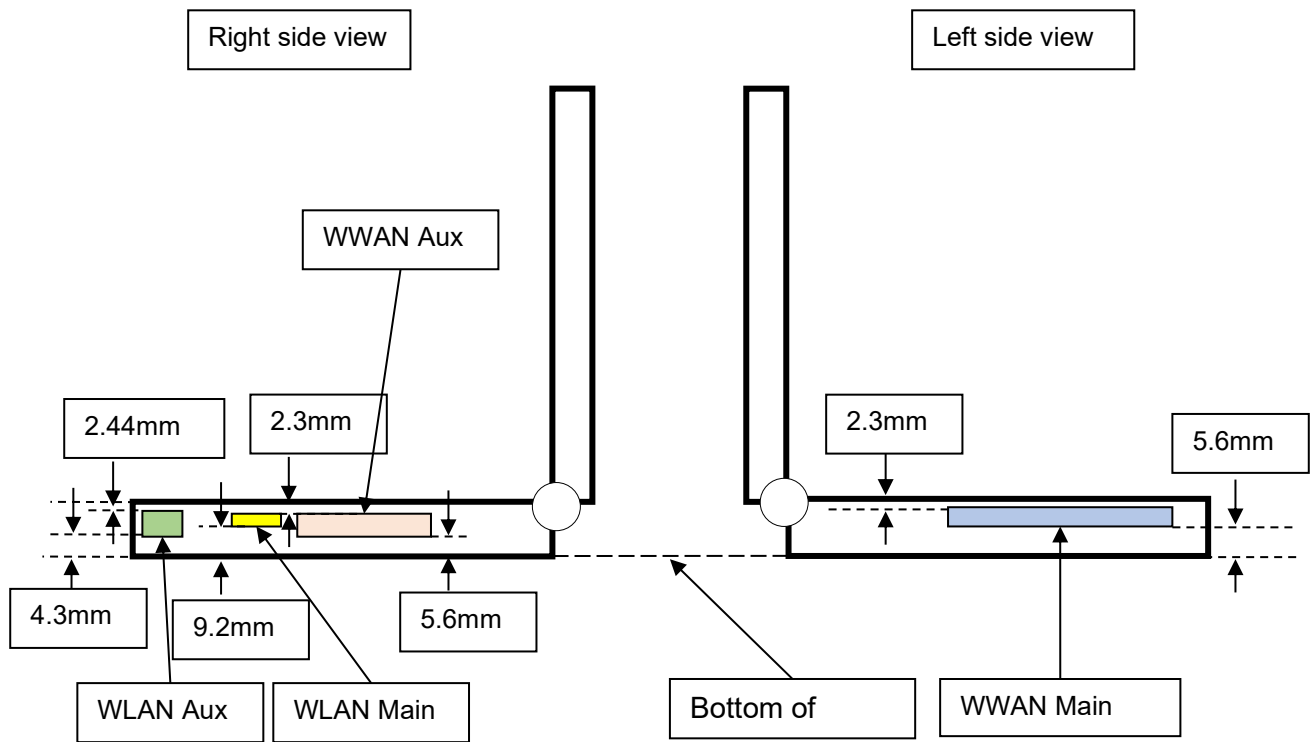
Annex B. Antenna Location

B.1 Antenna Host Platform Location Information

Include a dimensioned photo(s) or dimensioned drawing(s) of Main and Aux antenna placements (measurements are not required for receive-only antenna).

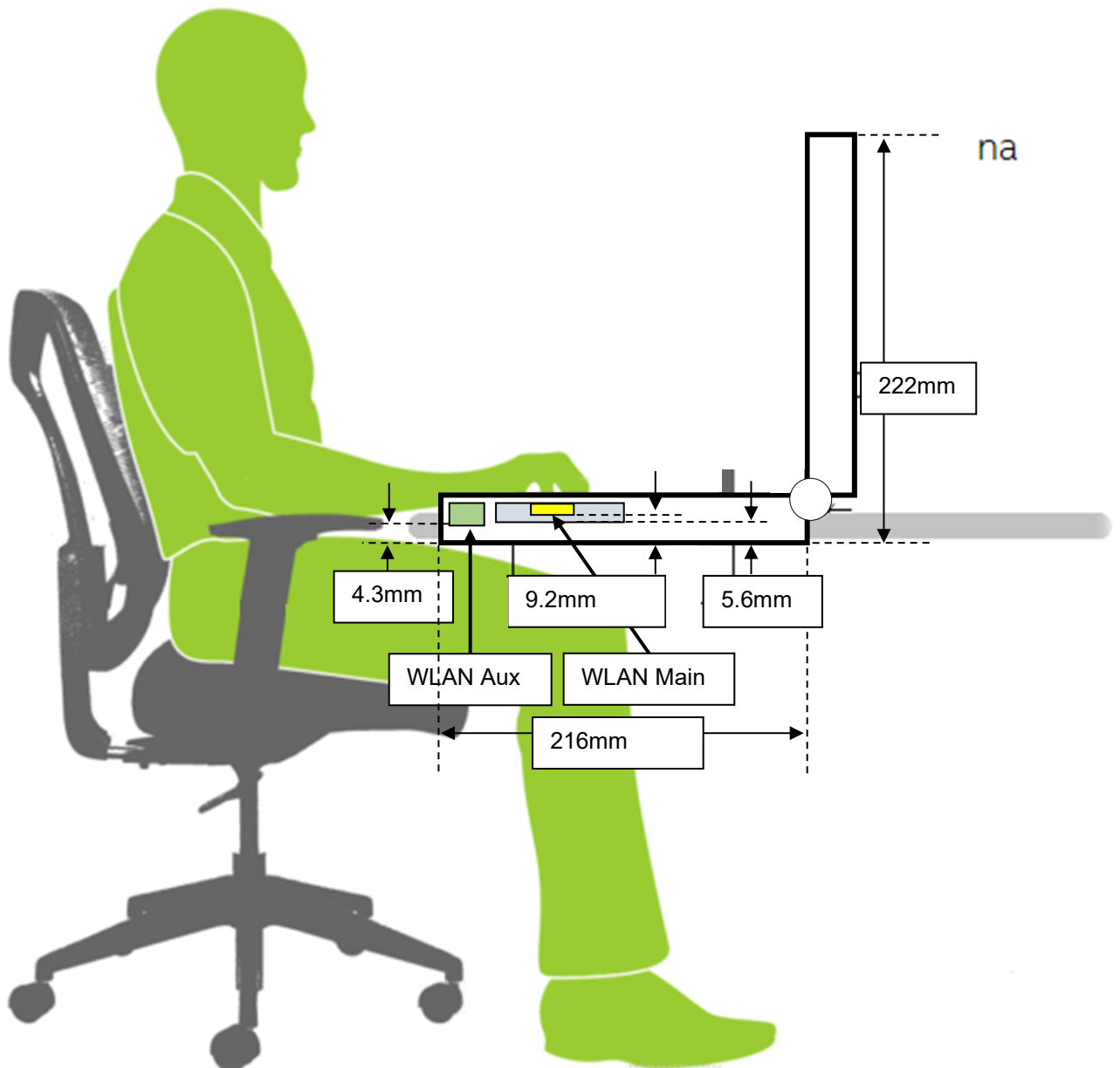
Any antenna that transmits must show dimensions to bottom of laptop. Provide a description of the materials that are used for supporting or surrounding transmit antennas; for example, non-conductive plastics vs. conductive coated plastic or metallic materials.



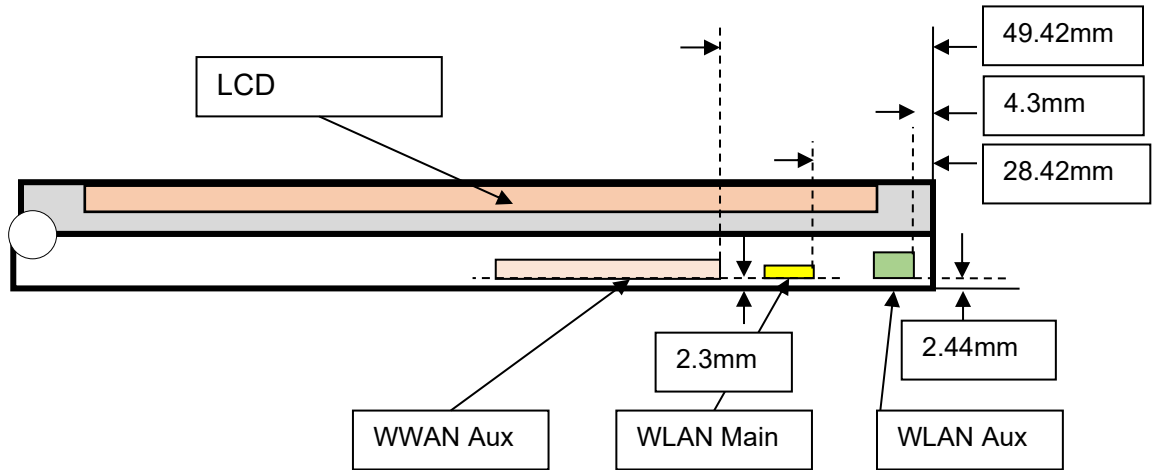


B.2 Antenna dimensional information for SAR evaluation

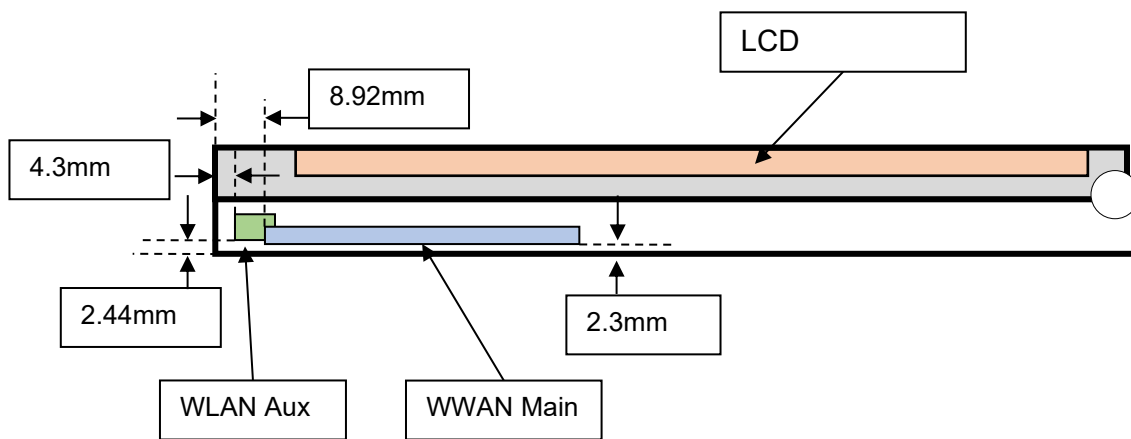
Include a dimensioned photo(s) or dimensioned drawing(s) showing the distance (mm) between the transmit antennas and the user. For notebook/laptop hosts show lapheld position (example below). For tablet hosts show all orientations including lapheld, primary & secondary portrait, primary & secondary landscape positions. Include a description of any proximity sensors or power throttling implementations that limit or exclude use of any host orientation.



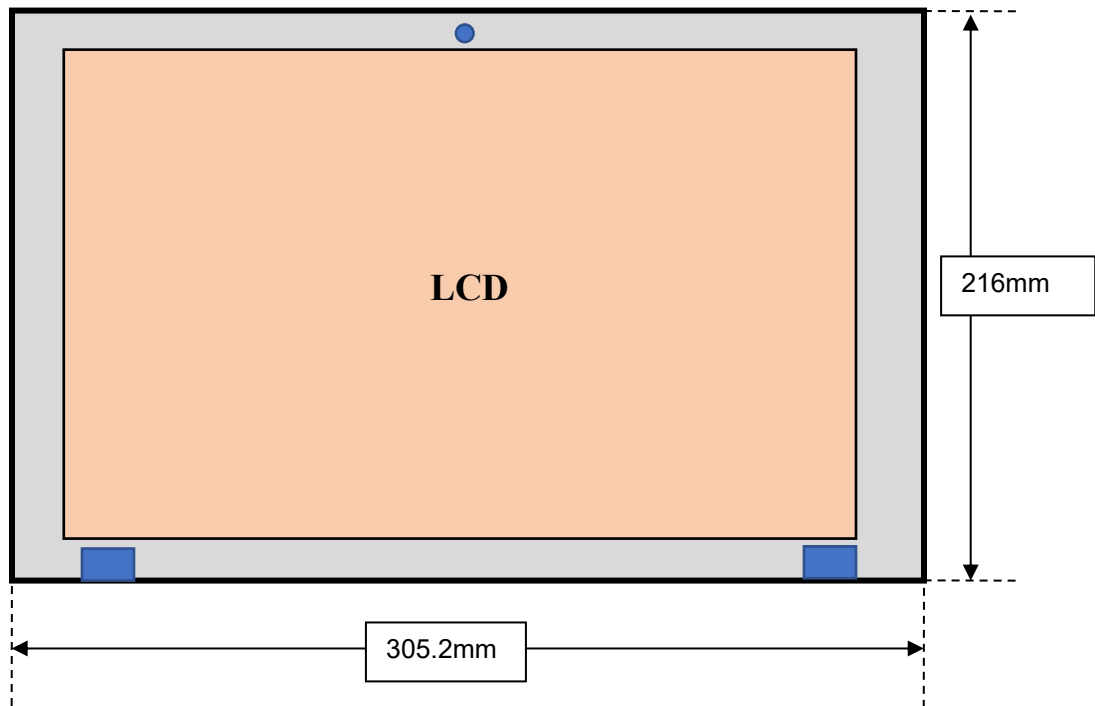
Tablet Mode Right Side View:



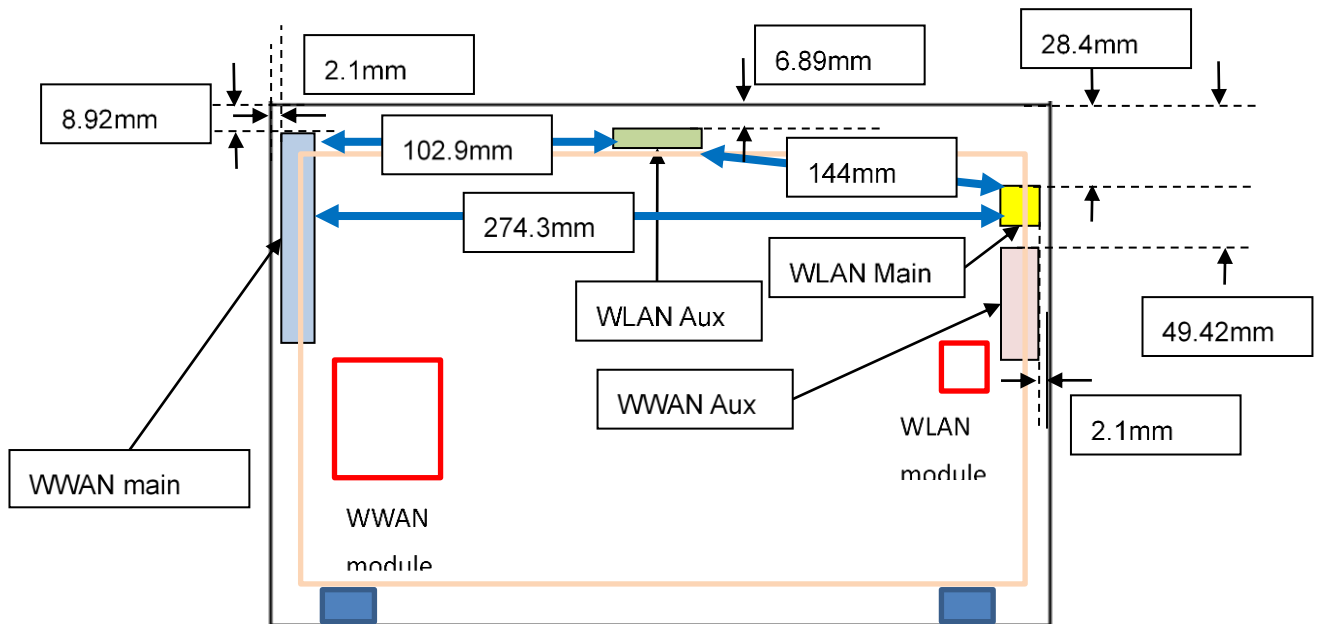
Tablet Mode Left Side View:



Tablet Mode Top Side View



Tablet Mode Top View Figure 2:



Tablet Mode Bottom Side View

