



TEST REPORT

EUT Description	Wireless Module installed in Convertible PC
Brand Name	Intel® Wi-Fi 6 AX203
Model Name	AX203NGW
FCC/IC ID	PD9AX203NG / 1000M-AX203NG
Date of Test Start/End	2024-01-22 / 2024-02-09
Features	802.11ax, Dual Band, 2x2 Wi-Fi + Bluetooth® 5.2 (see section 5)
Description	Platform: ThinkBook 14 2-in1 G4 IML + AWAN and Luxshare antennas

Applicant	Intel Corporation SAS
Address	425 Rue de Goa – Le Cargo B6 – 06600 Antibes, FRANCE
Contact Person	Benjamin Lavenant
Telephone/Fax/ Email	Benjamin.lavenant@intel.com

Reference Standards	FCC 47 CFR Part §2.1093 RSS-102, issue 5 (see section 1)	
RF Exposure Environment	Portable devices - General population/uncontrolled exposure	
Exposure Conditions	Body worn	
	SAR Result	SAR Limit
Maximum SAR Result & Limit	1.02 W/kg (1g)	1.6 W/kg (1g)
Min. test separation distance	0mm to phantom, 3.05 mm to antenna edge	

Test Report identification	231213-02.TR02
Revision Control	Rev. 01 This test report revision replaces any previous test report revision (see section 8)

The test results relate only to the samples tested.
Reference to accreditation shall be used only by full reproduction of test report.

Reviewed by _____

Adel LOUNES
(Test Lead Engineer)

Intel Corporation S.A.S – WRF Lab
425 rue de Goa – Le Cargo B6 - 06600 Antibes, France
Tel. +33493001400 / Fax +33493001401

Table of Contents

- 1. Standards, reference documents and applicable test methods 4**
- 2. General conditions, competences and guarantees 4**
- 3. Environmental Conditions 5**
- 4. Test samples 5**
- 5. EUT Features 6**
- 6. Remarks and comments 12**
- 7. Test Verdicts summary 12**
- 8. Document Revision History 12**
- Annex A. Test & System Description 13**
 - A.1 SAR DEFINITION 13
 - A.2 SPEAG SAR MEASUREMENT SYSTEM 14
 - A.2.1 SAR Measurement Setup 14
 - A.2.2 E-Field Measurement Probe 15
 - A.2.3 Flat Phantom 15
 - A.2.4 Device Positioner 16
 - A.3 DATA EVALUATION 17
 - A.4 SYSTEM AND LIQUID CHECK 19
 - A.4.1 System Check 19
 - A.4.2 Liquid Check 20
 - A.5 TEST EQUIPMENT LIST 21
 - A.5.1 Tissue Simulant Liquid 21
 - A.6 MEASUREMENT UNCERTAINTY EVALUATION 22
 - A.7 RF EXPOSURE LIMITS 23
- Annex B. Test Results 24**
 - B.1 TEST CONDITIONS 24
 - B.1.1 Test SAR Test positions relative to the phantom 24
 - B.1.2 Test signal, Output power and Test Frequencies 24
 - B.1.3 Evaluation Exclusion and Test Reductions 25
 - B.2 CONDUCTED POWER MEASUREMENTS 29
 - B.2.1 WLAN 2.4GHz – Notebook Mode 29
 - B.2.2 WLAN 2.4GHz – Tablet Mode 30
 - B.2.3 WLAN 5GHz (U-NII) 31
 - B.2.4 Bluetooth – Notebook Mode 42
 - B.2.1 Bluetooth – Tablet Mode 43
 - B.3 TISSUE PARAMETERS MEASUREMENT 44
 - B.4 SYSTEM CHECK MEASUREMENTS 45
 - HEAD MEASUREMENTS 45
 - B.5 SAR TEST RESULTS 46
 - B.5.1 Bluetooth & 802.11b/g/n/ax – 2.4GHz – DTS 46
 - B.5.2 802.11a/n/ac/ax – 5.3 GHz – U-NII-2A 47
 - B.5.3 802.11a/n/ac/ax – 5.6 GHz – U-NII-2C 47
 - B.5.4 802.11a/n/ac/ax – 5.8 GHz – U-NII-3 47
 - B.5.5 SAR Measurement Variability 48
 - B.5.6 Simultaneous Transmission SAR Evaluation 48
- Annex C. Test System Plots 50**
- Annex D. TSL Dielectric Parameters 58**

D.1	HEAD 5200MHZ-5800MHZ	59
Annex E.	Calibration Certificates	60
Annex F.	Photographs	62
F.1	TEST SAMPLE	62
F.2	TEST POSITIONS.....	64
F.3	ANTENNA HOST PLATFORM LOCATION AND ADJACENT EDGE POSITIONS RELATIVE TO THE BODY	65
F.4	PHANTOM LIQUID LEVEL DURING MEASUREMENTS	66

1. Standards, reference documents and applicable test methods

FCC	<ol style="list-style-type: none"> 1. FCC Title 47 CFR Part §2.1093 – Radiofrequency radiation exposure evaluation: portable devices. 2021-10-01 Edition 2. FCC OET KDB 447498 D04 interim v01 General RF Exposure Guidance v01– RF Exposure Procedures and Equipment Authorization Policies for Mobile and Portable Devices. 3. FCC OET KDB 616217 D04 v01r02 – SAR Evaluation Considerations for Laptop, Notebook, Netbook and Tablet Computers. 4. FCC OET KDB 865664 D01 v01r04 – SAR Measurement Requirements for 100 MHz to 6 GHz. 5. FCC OET KDB 865664 D02 v01r02 – RF Exposure Compliance Reporting and Documentation Considerations. 6. IEEE Std 1528-2013 – IEEE Recommended Practice Determining the Peak Spatial-Average Specific Absorption Rate (SAR) in the Human Head from Wireless Communication Devices: Measurement Techniques...
ISED	<ol style="list-style-type: none"> 1. ISED RSS 102, Issue 5 – Radio Frequency (RF) Exposure Compliance of Radio communication Apparatus (All Frequency Bands) 2. ISED RSS-102 Supplementary Procedures SPR-001 SAR testing requirements with regard to bystanders for laptop type computers with antennas built-in on display screen (Laptop Mode / Tablet Mode) 3. ISED Notice 2020-DRS0020 Applicability of IEC/IEEE 62209-1528 and IEC 62209-3 Standard 4. ISED Notice 2016-DRS001 – Applicability of latest FCC RF Exposure KDB Procedures and Other Procedures. 5. ISED Notice 2012-DRS0529 – SAR correction for measured conductivity and relative permittivity based on IEC 62209-2 standard. 6. FCC OET KDB KDB447498 D01 V06 General RF Exposure Guidance – RF Exposure Procedures and Equipment Authorization Policies for Mobile and Portable Devices. 7. FCC OET KDB 616217 D04 v01r02 – SAR Evaluation Considerations for Laptop, Notebook, Netbook and Tablet Computers. 8. FCC OET KDB 865664 D01 v01r04 – SAR Measurement Requirements for 100 MHz to 6 GHz. 9. FCC OET KDB 865664 D02 v01r02 – RF Exposure Compliance Reporting and Documentation Considerations. 10. IEC/IEEE 62209-1528:2020 Measurement procedure for the assessment of specific absorption rate of human exposure to radio frequency fields from hand-held and body-mounted wireless communication devices – Part 1528: Human models, instrumentation, and procedures (Frequency range of 4 MHz to 10 GHz)

2. General conditions, competences and guarantees

- ✓ Tests performed under FCC standards identified in section 1 are covered by A2LA accreditation.
- ✓ Tests performed under ISED standards identified in section 1 are covered by Cofrac accreditation.
- ✓ Intel Corporation SAS Wireless RF Lab (Intel WRF Lab) is an ISO/IEC 17025:2017 laboratory accredited by the American Association for Laboratory Accreditation (A2LA) with the certificate number 3478.01.
- ✓ Intel Corporation SAS Wireless RF Lab (Intel WRF Lab) is a Registered Test Site listed by ISED, with ISED company number 1000Y and CAB identifier FR0005
- ✓ Intel Corporation SAS Wireless RF Lab (Intel WRF Lab) is an ISO/IEC 17025:2017 testing laboratory accredited by the French Committee for Accreditation (Cofrac) with the certificate number 1-6736.
- ✓ Intel Corporation SAS Wireless RF Lab (Intel WRF Lab) is a Registered Test Site listed by ISED, with ISED #1000Y.
- ✓ Intel WRF Lab only provides testing services and is committed to providing reliable, unbiased test results and interpretations.
- ✓ Intel WRF Lab is liable to the client for the maintenance of the confidentiality of all information related to the item under test and the results of the test.
- ✓ Intel WRF Lab has developed calibration and proficiency programs for its measurement equipment to ensure correlated and reliable results to its customers.
- ✓ This report is only referred to the item that has undergone the test.
- ✓ This report does not imply an approval of the product by the Certification Bodies or competent Authorities.

3. Environmental Conditions

✓ At the site where the measurements were performed the following limits were not exceeded during the tests:

Temperature	20.8°C ±1.0°C
Humidity	40.1 ±6.5%
Liquid Temperature	19.9°C ±1.8°C

4. Test samples

Sample	Control #	Description	Model	Serial #	Date of receipt	Note
#01	231213-02.S01	Wireless Module installed in Convertible PC	ThinkBook 14 2-in1 G4 IML	4810UR010010A004	2023-12-13	AWAN antenna
#02	231213-02.S02	Wireless Module installed in Convertible PC	ThinkBook 14 2-in1 G4 IML	4810UR010010A00A	2023-12-13	Luxshare antenna

5. EUT Features

The herein information is provided by the customer.

Brand Name	Intel® Wi-Fi 6 AX203			
Model Name	AX203NGW			
Software Version	DRTU.04824.23.0.0			
Driver Version	23.0.6.0			
Prototype / Production	Production			
Host Identification	ThinkBook 14 2-in1 G4 IML			
Supported Radios	802.11b/g/n/ax	2.4GHz (2400.0 – 2483.5 MHz)		
	802.11a/n/ac/ax	5.2GHz (5150.0 – 5350.0 MHz)		
		5.6GHz (5470.0 – 5725.0 MHz)		
		5.8GHz (5725.0 – 5850.0 MHz)		
	Bluetooth	2.4GHz (2400.0 – 2483.5 MHz)		
Antenna Information	Transmitter	Aux (Ant 1/Tx1)	Main (Ant 2/Tx2)	
	Manufacturer	AWAN	AWAN	
	Antenna type	PIFA	PIFA	
	Part number	SA31M76156	SA31M76154	
	Transmitter	Aux (Ant 1/Tx1)	Main (Ant 2/Tx2)	
	Manufacturer	Luxshare	Luxshare	
	Antenna type	PIFA	PIFA	
	Part number	SA31M76157	SA31M76155	
	See Annex F for more details on antennas location.			
	Simultaneous Transmission Configurations	WLAN 2.4GHz Main + BT Aux		
		WLAN 2.4GHz Main + WLAN 2.4GHz Aux		
		WLAN 5GHz Main + BT Aux		
WLAN 5GHz Main + WLAN 5GHz Aux				
Additional Information	WLAN 5GHz Main + WLAN 5GHz Aux + BT Aux			
	No WWAN transmitter is considered in this report			
	5.60-5.65 GHz band (TDWR) is supported by the device			
	Band gap is supported by the device			

Supported Radios

Mode	Duty Cycle	Modulation	Band	UL Freq Range (MHz)	Measured Max. Conducted Power (dBm)
802.11b/g/n/ax	100%	BPSK QPSK 16QAM 64QAM	2.4GHz	2400-2483.5	14.97
802.11a/n/ac/ax	100%	BPSK QPSK 16QAM 64QAM 256QAM	5.2GHz	5150-5250	NM
			5.3GHz	5250-5350	13.23
			5.6GHz	5475-5725	13.38
			5.8GHz	5725-5850	13.18
BDR/EDR v5.2	77%	GFSK $\pi/4$ DQPSK 8DPSK	2.4GHz	2400-2483.5	6.95
Bluetooth LE v5.2	33%	GFSK	2.4GHz	2400-2483.5	NM

NM: Not Measured

Maximum Output power specification + Tune up tolerance limit, as specified by the client			Notebook config SISO mode	
Equipment Class	Mode	BW (MHz)	Main (dBm)	Aux (dBm)
DTS	802.11b	20	15.00	15.00
	802.11g	20	15.00	15.00
	802.11n20	20	15.00	15.00
	802.11ax20	20	15.00	15.00
	802.11n40	40	15.00	15.00
	802.11ax40	40	15.00	15.00
U-NII-1	802.11a	20	12.00	13.50
	802.11n20	20	12.00	13.50
	802.11ax20	20	12.00	13.50
	802.11n40	40	12.00	13.50
	802.11ax40	40	12.00	13.50
	802.11ac80	80	12.00	13.50
	802.11ax80	80	12.00	13.50
U-NII-2A	802.11a	20	12.00	13.50
	802.11n20	20	12.00	13.50
	802.11ax20	20	12.00	13.50
	802.11n40	40	12.00	13.50
	802.11ax40	40	12.00	13.50
	802.11ac80	80	12.00	13.50
	802.11ax80	80	12.00	13.50
U-NII-2C	802.11a	20	12.00	13.50
	802.11n20	20	12.00	13.50
	802.11ax20	20	12.00	13.50
	802.11n40	40	12.00	13.50
	802.11ax40	40	12.00	13.50
	802.11ac80	80	12.00	13.50
	802.11ax80	80	12.00	13.50
U-NII-3	802.11a	20	12.50	13.50
	802.11n20	20	12.50	13.50
	802.11ax20	20	12.50	13.50
	802.11n40	40	12.50	13.50
	802.11ax40	40	12.50	13.50
	802.11ac80	80	12.50	13.50
	802.11ax80	80	12.50	13.50

U-NII-4	802.11a	20	12.50	13.50
	802.11n20	20	12.50	13.50
	802.11ax20	20	12.50	13.50
	802.11n40	40	12.50	13.50
	802.11ax40	40	12.50	13.50
	802.11ac80	80	12.50	13.50
	802.11ax80	80	12.50	13.50
BT	Bluetooth BDR	1		10.00
	Bluetooth EDR2	1		9.00
	Bluetooth EDR3	1		9.00
	BLE	2		7.00

Maximum Output power specification + Tune up tolerance limit, as specified by the client			Tablet config SISO mode	
Equipment Class	Mode	BW (MHz)	Main (dBm)	Aux (dBm)
DTS	802.11b	20	15.00	15.00
	802.11g	20	15.00	15.00
	802.11n20	20	15.00	15.00
	802.11ax20	20	15.00	15.00
	802.11n40	40	15.00	15.00
	802.11ax40	40	15.00	15.00
U-NII-1	802.11a	20	9.00	10.00
	802.11n20	20	9.00	10.00
	802.11ax20	20	9.00	10.00
	802.11n40	40	9.00	10.00
	802.11ax40	40	9.00	10.00
	802.11ac80	80	9.00	10.00
U-NII-2A	802.11ax80	80	9.00	10.00
	802.11a	20	9.00	10.00
	802.11n20	20	9.00	10.00
	802.11ax20	20	9.00	10.00
	802.11n40	40	9.00	10.00
	802.11ax40	40	9.00	10.00
	802.11ac80	80	9.00	10.00
	802.11ax80	80	9.00	10.00
U-NII-2C	802.11ac160	160	9.00	10.00
	802.11ax160	160	9.00	10.00
	802.11a	20	9.00	11.00
	802.11n20	20	9.00	11.00
	802.11ax20	20	9.00	11.00
	802.11n40	40	9.00	11.00
	802.11ax40	40	9.00	11.00
U-NII-3	802.11ac80	80	9.00	11.00
	802.11ax80	80	9.00	11.00
	802.11a	20	9.00	11.00
	802.11n20	20	9.50	11.00
	802.11ax20	20	9.50	11.00
	802.11n40	40	9.50	11.00
	802.11ax40	40	9.50	11.00

U-NII-4	802.11a	20	9.50	10.50
	802.11n20	20	9.50	10.50
	802.11ax20	20	9.50	10.50
	802.11n40	40	9.50	10.50
	802.11ax40	40	9.50	10.50
	802.11ac80	80	9.50	10.50
	802.11ax80	80	9.50	10.50
BT	Bluetooth BDR	1		10.00
	Bluetooth EDR2	1		9.00
	Bluetooth EDR3	1		9.00
	BLE	2		7.00

6. Remarks and comments

1. The conducted values are obtained by applying the BIOS SAR power values to the AX203NGW Intel module installed in the ThinkBook 14 2-in1 G4 IML identified in this report, as requested by the customer.
2. Variability and simultaneous transmission results shown in this report are based on the highest SAR value obtained among all antenna manufacturers.
3. Only the plots for the test positions with the highest measured SAR per band/mode are included in Annex C as required per FCC OET KDB 865664 D02, paragraph 2.3.8.
4. On both samples the same conducted power measurements was used as we swapped the module on the second sample during SAR testing.
5. Bystander condition is covered at modular level according to RSS-102, SPR-001.

7. Test Verdicts summary

The statement of conformity to applicable standards in the table below are based on the measured values, without taking into account the measurement uncertainties.

Standard	Band	Highest Reported SAR (1g) (W/kg)	Verdict
802.11b/g/n/ax	2.4GHz	1.00	P
802.11a/n/ac/ax	5.2GHz	NM	NA
	5.3GHz	0.92	P
	5.6GHz	1.02	P
	5.8GHz	0.99	P
Bluetooth	2.4GHz	0.27	P

P: Pass
 F: Fail
 NM: Not Measured
 NA: Not Applicable

According to the FCC OET KDB 690783 D01, this is the summary of the values for the Grant Listing:

Exposure Condition	Highest Reported SAR (1g) (W/kg)		
	Equipment Class		
	DTS	DSS	U-NII
Body Worn	1.00	0.27	1.02
Simultaneous Tx	Sum-SAR: 1.97 SPLSR: 0.01	Sum-SAR: 2.20 SPLSR: 0.02	Sum-SAR: 2.20 SPLSR: 0.02

Considering the results of the performed test according to FCC 47CFR Part 2.1093 and ISED RSS 102, Issue 5 the item under test is IN COMPLIANCE with the requested specifications specified in Section1. Standards, reference documents and applicable test methods.

8. Document Revision History

Revision #	Modified by	Revision Details
Rev. 00	Y.Haddad	First Issue
Rev. 01	Y.Haddad	Annex F.3 was updated upon customer request

Annex A. Test & System Description

A.1 SAR Definition

Specific Absorption rate is defined as the time derivative of the incremental energy (dW) absorbed by (dissipated in) and incremental mass (dm) contained in a volume element (dV) of a given density (ρ).

$$SAR = \frac{d}{dt} \cdot \left(\frac{dW}{dm} \right) = \frac{d}{dt} \cdot \left(\frac{dW}{\rho \cdot dV} \right)$$

SAR is expressed in units of watts per kilogram (W/kg). SAR can be related to the electric field at a point by

$$SAR = \frac{\sigma |E|^2}{\rho}$$

Where:

σ = Conductivity of the tissue (S/m)

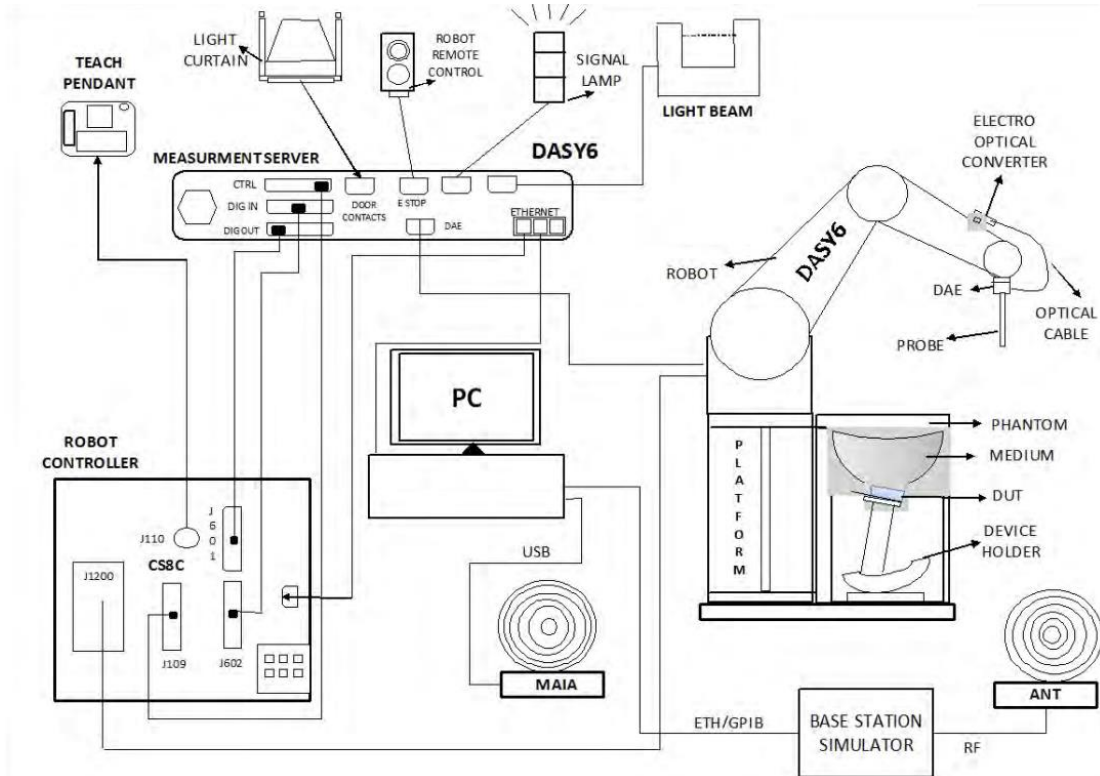
ρ = Mass density of the tissue (kg/m³)

E = RMS electric field strength (V/m)

A.2 SPEAG SAR Measurement System

A.2.1 SAR Measurement Setup

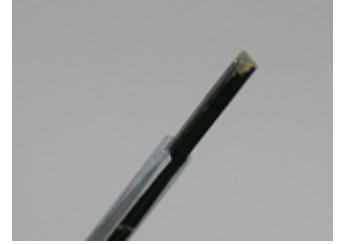
The DASY6 system for performing compliance tests consists of the following items:



- ✓ A standard high precision 6-axis robot (Stäubli TX/RX family) with controller, teach pendant and software. It includes an arm extension for accommodating the data acquisition electronics (DAE)
- ✓ An isotropic field probe optimized and calibrated for the targeted measurements.
- ✓ A data acquisition electronics (DAE) which performs the signal amplification, signal multiplexing, AD-conversion, offset measurements, mechanical surface detection, collision detection, etc. The signal is optically transmitted to the EOC.
- ✓ The Electro-optical Converter (EOC) performs the conversion from optical to electrical signals for the digital communication to the DAE. The EOC signal is transmitted to the measurement server.
- ✓ The function of the measurement server is to perform the time critical tasks such as signal filtering, control of the robot operation and fast movements interrupts.
- ✓ The Light Beam used is for probe alignment. This improves the (absolute) accuracy of the probe positioning.
- ✓ A computer running Windows professional operating system and the DASY6 software.
- ✓ Remote control and teach pendant as well as additional circuitry for robot safety such as warning lamps, etc.
- ✓ The phantom, the device holder and other accessories according to the targeted measurement.
- ✓ MAIA is a hardware interface (Antenna) used to evaluate the modulation and audio interference characteristics of RF signals.
- ✓ ANT is an ultra-wideband antenna for use with the base station simulators over 698 MHz to 6GHz.
- ✓ The base station simulator is an equipment used for SAR cellular tests in order to emulate the cellular signals characteristics and behavior between a regular base station and the equipment under test.
- ✓ Tissue simulating liquid.
- ✓ System Validation dipoles.
- ✓ Network emulator or RF test tool.

A.2.2 E-Field Measurement Probe

The probe is constructed using three orthogonal dipole sensors arranged on an interlocking, triangular prism core. The probe has built-in shielding against static charges and is contained within a PEEK cylindrical enclosure material at the tip.



The probe's characteristics are:

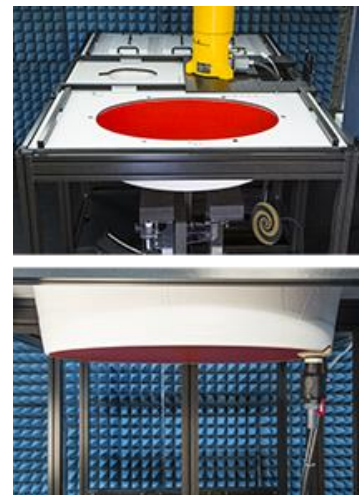
Frequency Range	30MHz – 6GHz
Length	337 mm
Probe tip external diameter	2.5 mm
Typical distance between dipoles and the probe tip	1 mm
Axial Isotropy (in human-equivalent liquids)	±0.3 dB
Hemispherical Isotropy (in human-equivalent liquids)	±0.5 dB
Linearity	±0.2 dB
Maximum operating SAR	100 W/kg
Lower SAR detection threshold	0.001 W/kg

A.2.3 Flat Phantom

Phantom for compliance testing of handheld and body-mounted wireless devices in the frequency range of 30 MHz to 6 GHz. ELI is fully compatible with the IEC 62209-2 standard and all known tissue simulating liquids. ELI has been optimized regarding its performance and can be integrated into our standard phantom tables. A cover prevents evaporation of the liquid. Reference markings on the phantom allow installation of the complete setup, including all predefined phantom positions and measurement grids, by teaching three points. The phantom is compatible with all SPEAG dosimetric probes and dipoles.

The phantom's characteristics are:

Material	Vinylester, glass fiber reinforced (VE-GF)
Shell thickness	2 mm ± 0.2 mm
Filling volume	30 Liters approx.
Dimensions	Major axis: 600mm / Minor axis: 400mm



A.2.4 Device Positioner

The SAR in the phantom is approximately inversely proportional to the square of the distance between the source and the liquid surface. For a source at 5 mm distance, a positioning uncertainty of 0.5 mm would produce a SAR uncertainty of 20%. Accurate device positioning is therefore crucial for accurate and repeatable measurements. The positions in which the devices must be measured are defined by the standards.



The DASY device holder is designed to cope with the different positions given in the standard. It has two scales for device rotation (with respect to the body axis) and device inclination (with respect to the line between the ear reference points). The rotation center for both scales is the ear reference point (ERP). Thus the device needs no repositioning when changing the angles.

The DASY device holder is constructed of low-loss POM material having the following dielectric parameters: relative permittivity $\epsilon=3$ and loss tangent $\delta=0.02$. The amount of dielectric material has been reduced in the closest vicinity of the device, since measurements have suggested that the influence of the clamp on the test results could thus be lowered.

A simple but effective and easy-to-use extension for the Mounting Device; facilitates testing of larger devices according to IEC 62209-2 (e.g., laptops, cameras, etc.); lightweight and fits easily on the upper part of the Mounting Device in place of the phone positioner. The extension is fully compatible with the Twin SAM, ELI and other Flat Phantoms.



A.3 Data Evaluation

- **Power Reference measurement**

The robot measures the E field in a specified reference position that can be either the selected section's grid reference point or a user point in this section at 4mm of the inner surface of the phantom, 2mm for frequencies above 3GHz.

- **Area Scan**

Measurement procedures for evaluating SAR from wireless handsets typically start with a coarse measurement grid to determine the approximate location of the local peak SAR values. This is known as the area-scan procedure. The SAR distribution is scanned along the inside surface of one side of the phantom head, at least for an area larger than the projection of the handset and antenna. The distance between the measured points and phantom surface should be less than 8 mm, and should remain constant (with variation less than ± 1 mm) during the entire scan in order to determine the locations of the local peak SAR with sufficient accuracy. The angle between the probe axis and the surface normal line is recommended but not required to be less than 30° . If this angle is larger than 30° and the closest point on the probe-tip housing to the phantom surface is closer than a probe diameter, the boundary effect may become larger and polarization dependent. This additional uncertainty needs to be analyzed and accounted for. To achieve this, modified test procedures and additional uncertainty analyses not described in this recommended practice may be required. The measurement and interpolation point spacing should be chosen such as to allow identification of the local peak locations to within one-half of the linear dimension of a side of the zoom-scan volume. Because a local peak having specific amplitude and steep gradients may produce a lower peak spatial-average SAR compared to peaks with slightly lower amplitude and less steep gradients, it is necessary to evaluate these other peaks as well. However, since the spatial gradients of local SAR peaks are a function of the wavelength inside the tissue-equivalent liquid and the incident magnetic field strength, it is not necessary to evaluate local peaks that are less than 2 dB or more below the global maximum peak. Two-dimensional spline algorithms (Brishoual et al. 2001; Press et al., 1996) are typically used to determine the peaks and gradients within the scanned area. If a peak is found at a distance from the scan border of less than one-half the edge dimension of the desired 1 g or 10 g cube, the measurement area should be enlarged if possible.

- **Zoom Scan**

To evaluate the peak spatial-average SAR values for 1 g or 10 g cubes, fine resolution volume scans, called zoom scans, are performed at the peak SAR locations identified during the area scan. The minimum zoom scan volume size should extend at least 1.5 times the edge dimension of a 1 g cube in all directions from the center of the scan volume, for both 1 g and 10 g peak spatial-average SAR evaluations. Along the phantom curved surfaces, the front face of the volume facing the tissue/liquid interface conforms to the curved boundary, to ensure that all SAR peaks are captured. The back face should be equally distorted to maintain the correct averaging mass. The flatness and orientation of the four side faces are unchanged from that of a cube whose orientation is within $\pm 30^\circ$ of the line normal to the phantom at the center of the cube face next to the phantom surface. The peak local SAR locations that were determined in the area scan (interpolated values) should be used for the centers of the zoom scans. If a scan volume cannot be centered due to proximity of a phantom shape feature, the probe should be tilted to allow scan volume enlargement. If probe tilt is not feasible, the zoom-scan origin may be shifted, but not by more than half of the 1 g or 10 g cube edge dimension.

After the zoom-scan measurement, extrapolations from the closest measured points to the surface, for example along lines parallel to the zoom-scan centerline, and interpolations to a finer resolution between all measured and extrapolated points are performed. Extrapolation algorithm considerations are described in 6.5.3, and 3-D spline methods (Brishoual et al., 2001; Kreyszig, 1983; Press et al., 1996) can be used for interpolation. The peak spatial-average SAR is finally determined by a numerical averaging of the local SAR values in the interpolation grid, using for example a trapezoidal algorithm for the integration (averaging).

In some areas of the phantom, such as the jaw and upper head regions, the angle of the probe with respect to the line normal to the surface may be relatively large, e.g., greater than $\pm 30^\circ$, which could increase the boundary effect error to a larger level. In these cases, during the zoom scan a change in the orientation of the probe, the phantom, or both is recommended but not required for the duration of the zoom scan, so that the angle between the probe axis and the line normal to the surface is within 30° for all measurement points.

- **Power Drift measurement**

The robot re-measures the E-Field in the same reference location measured at the Power Reference. The drift measurement gives the field difference in dB from the first to the last reference reading. This allows a user to monitor the power drift of the device under test that must remain within a maximum variation of $\pm 5\%$.

- **Post-processing**

The procedure for spatial peak SAR evaluation has been implemented according to the IEEE1528 and IEC 62209-1/2 and IEC/IEEE 62209-1528:2020 standards. It can be conducted for 1g and 10g.

The software allows evaluations that combine measured data and robot positions, such as:

- ✓ Maximum search
- ✓ Extrapolation
- ✓ Boundary correction
- ✓ Peak search for averaged SAR

Interpolation between the measured points is performed when the resolution of the grid is not fine enough to compute the average SAR over a given mass.

Extrapolation routines are used to obtain SAR values between the lowest measurement points and the inner phantom surface. The extrapolation is determined by the surface detection distance and the probe sensor offset. Several measurements at different distances are necessary for the extrapolation.

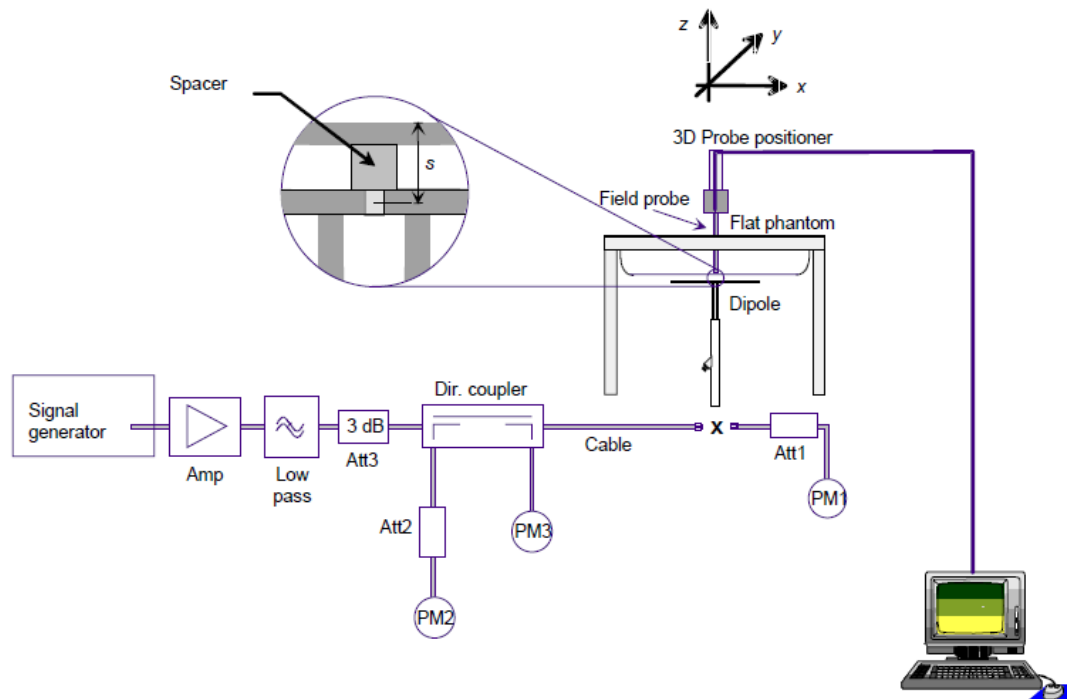
A.4 System and Liquid Check

A.4.1 System Check

The system performance check verifies that the system operates within its specifications. System and operator errors can be detected and corrected. It is recommended that the system performance check be performed prior to any usage of the system in order to guarantee reproducible results.

The system performance check uses normal SAR measurements in a simplified setup with a well characterized source. This setup was selected to give a high sensitivity to all parameters that might fail or vary over time. The system check does not intend to replace the calibration of the components, but indicates situations where the system uncertainty is exceeded due to drift or failure.

In the simplified setup for system check, the EUT is replaced by a calibrated dipole and the power source is replaced by a controlled continuous wave generated by a signal generator. The calibrated dipole must be placed beneath the flat phantom section of the phantom at the correct distance.



The equipment setup is shown below:

- ✓ Signal Generator
- ✓ Amplifier
- ✓ Directional coupler
- ✓ Power meter
- ✓ Calibrated dipole

First, the power meter PM1 (including attenuator Att1) is connected to the cable to measure the forward power at the location of the connector (x) to the system check source. The signal generator is adjusted for the desired forward power at the connector as read by power meter PM1 after attenuation Att1 and also as coupled through Att2 to PM2. After connecting the cable to the source, the signal generator is readjusted for the same reading at power meter PM2.

SAR results are normalized to a forward power of 1W to compare the values with the calibration reports results as described at IEEE 1528, IEC 62209 and IEC/IEEE 62209-1528:2020 standards

A.4.2 Liquid Check

The dielectric parameters check is done prior to the use of the tissue simulating liquid. The verification is made by comparing the relative permittivity and conductivity to the values recommended by the applicable standards.

The liquid verification was performed using the following test setup:

- ✓ VNA (Vector Network Analyzer)
- ✓ Open-Short-Load calibration kit
- ✓ RF Cable
- ✓ Open-Ended Coaxial probe
- ✓ DAK software tool
- ✓ SAR Liquid
- ✓ De-ionized water
- ✓ Thermometer

These are the target dielectric properties of the tissue-equivalent liquid material as defined in FCC OET KDB 865664 D01.

Frequency (MHz)	Head SAR	
	ϵ_r (F/m)	σ (S/m)
150	61.9	0.80
300	58.2	0.92
450	56.7	0.94
835	55.2	0.97
900	55.0	1.05
1450	54.0	1.30
1800-2000	53.3	1.52
2450	52.7	1.95
3000	52.0	2.73
5800	48.2	6.00
6000	35.07	5.48
6500	34.46	6.07
7000	33.88	6.65

(ϵ_r = relative permittivity, σ = conductivity and ρ = 1000 kg/m³)

The measurement system implement a SAR error compensation algorithm as documented in IEEE Std 1528-2013 and IEC/IEEE 62209-1528:2020 (equivalent to draft standard IEEE P1528-2011) to automatically compensate the measured SAR results for deviations between the measured and required tissue dielectric parameters (applied to only scale up the measured SAR, and not downward) so, according to FCC OET KDB 865664 D01, the tolerance for ϵ_r and σ may be relaxed to $\pm 10\%$.

A.5 Test Equipment List

SAR system #2

ID #	Device	Type/Model	Serial Number	Manufacturer	Cal. Date	Cal. Due Date
002-000	6-Axis Robot	TX60 Lspeag	F16/55FXA1/A/01	STAÜBLI	NA	NA
002-001	Robot Controller	CS8C	F16/55FXA1/C/01	STAÜBLI	NA	NA
002-002	Measurement Server	DASY6	1489	SPEAG	NA	NA
002-003	Electro Optical Converter	EOC60	1098	SPEAG	NA	NA
002-004	Light Beam Unit	SE UKS 030 AA	N/A	Di-soric	NA	NA
002-005	Oval Flat Phantom	ELI V8.0	2048	SPEAG	NA	NA
002-006	Top Edge Holder		N/A	SPEAG	NA	NA
002-007	Measurement Software	DASY6 v16.2.4.2524	9-5DEE27C2	SPEAG	NA	NA
001-017	Data Acquisition Electronics	DAEip	1703	SPEAG	2023-04-18	2024-04-18
086-000	Dosimetric E-Field probe	EX3DV4	7455	SPEAG	2023-03-16	2024-03-16

Shared equipment

ID #	Device	Type/Model	Serial Number	Manufacturer	Cal. Date	Cal. Due Date
151-000	USB Power Sensor	NRP-Z58	100972	R&S	2022-03-29	2024-03-29
008-025	USB Power Sensor	NRP-Z57	101280	R&S	2022-04-22	2024-04-22
099-000	Liquid measurement SW	DAK-3.5 V2.6.0.5	9-2687B491	SPEAG	NA	NA
069-000	Dielectric Probe Kit	DAK-3.5	1037	SPEAG	2023-07-04	2025-07-04
077-000	Coupler	CD0.5-8-20-30	1251-002	Amd-group	2023-02-20	2024-02-20
079-001	RF Cable	CBL-0.5M-SMSM+	226527	Mini-Circuits	2023-02-20	2024-02-20
167-001	RF Cable	CBL-2M-SMSM+	233846	Mini-Circuits	2023-02-20	2024-02-20
130-000	Vector Signal Generator	SMB100A	178217	R&S	2023-07-26	2025-07-26
496-000	Temp & Humidity Logger	RA32E-TH1-RAS	RA32-FC8485	AVTECH	2023-04-20	2025-04-20
339-000	VNA Analyzer	ZNB 40	101740	R&S	2023-05-19	2025-05-19
084-000	5GHz System Validation Dipole	D5GHzv2	1259	SPEAG	2023-03-22	2024-03-22
070-000	2450GHz System Validation Dipole	D2450GHzv2	937	SPEAG	2023-06-02	2024-06-02
458-000	Measurement Software	SARA V2.3	NA	Intel	NA	NA

A.5.1 Tissue Simulant Liquid

TSL	Manufacturer / Model	Freq Range (MHz)	Main Ingredients
Head WideBand	SPEAG HBBL600-10000V6 Batch 210331-01	600-10000	Ethanediol, Sodium petroleum sulfonate, Hexylene Glycol / 2-Methyl-pentane-2.4-diol, Alkoxylated alcohol

A.6 Measurement Uncertainty Evaluation

The system uncertainty evaluation is shown in the table below with a coverage factor of $k = 2$ to indicate a 95% level of confidence:

SPEAG DASY6 Uncertainty Budget According to IEC/IEEE 62209-1528 (4 MHz - 6 GHz) including IEEE 1528-2013 and IEC 62209-1/2016, IEC 62209-2/2010								
Symbol	Error Description	Uncert. Value	Prob. Dist.	Div.	(ci) 1g	(ci) 10g	Std Unc. (1g)	Std Unc. (10g)
Measurement System Errors								
CF	Probe Calibration	±14.0 %	N	2	1	1	±7.0 %	±7.0 %
CF _{drift}	Probe Calibration Drift	±1.0 %	N	1	1	1	±1.0 %	±1.0 %
LIN	Probe Linearity	±4.7 %	R	√3	1	1	±2.7 %	±2.7 %
BBS	Broadband Signal	±3.0 %	N	2	1	1	±1.5 %	±1.5 %
ISO	Axial Isotropy	±4.7 %	R	√3	0.5	0.5	±1.4 %	±1.4 %
ISO	Hemispherical Isotropy	±9.6 %	R	√3	0.5	0.5	±2.8 %	±2.8 %
DAE	Data Acquisition	±0.3 %	N	1	1	1	±0.3 %	±0.3 %
AMB	RF Ambient	±1.8 %	N	1	1	1	±1.8 %	±1.8 %
Δ _{sys}	Probe Positioning	±0.2 %	N	1	0.33	0.33	±0.1 %	±0.1 %
DAT	Data Processing	±2.3 %	N	1	1	1	±2.3 %	±2.3 %
Phantom and Device Errors								
LIQ(σ)	Conductivity (meas.) _{DAK}	±2.5 %	N	1	0.78	0.71	±2.0 %	±1.8 %
LIQ(T _σ)	Conductivity (temp.) _{BB}	±3.4 %	R	√3	0.78	0.71	±1.5 %	±1.4 %
EPS	Phantom Permittivity	±14.0 %	R	√3	0.25	0.25	±2.0 %	±2.0 %
DAS	Distance DUT - TSL	±2.0 %	N	1	2	2	±4.0 %	±4.0 %
H	Device Holder	±3.6 %	N	1	1	1	±3.6 %	±3.6 %
MOD	DUT Modulation _m	±2.4 %	R	√3	1	1	±1.4 %	±1.4 %
TAS	Time-average SAR	±2.6 %	R	√3	1	1	±1.5 %	±1.5 %
RF _{drift}	DUT drift	±5.0 %	N	1	1	1	±2.9 %	±2.9 %
Correction to the SAR results								
C(ε, σ)	Deviation to Target	±1.9 %	N	1	1	0.84	±1.9 %	±1.6 %
Combined Std. Uncertainty							±11.5 %	±11.4 %
Expanded STD Uncertainty							±23.1 %	±22.9 %

A.7 RF Exposure Limits

SAR assessments have been made in line with the requirements of FCC 47CFR Part 2.1093 and ISED RSS 102 issue 5 on the limitation of exposure of the general population / uncontrolled exposure for portable devices.

Exposure Type	General Population / Uncontrolled Environment
Peak spatial-average SAR (averaged over any 1 gram of tissue)	1.6 W/kg
Whole Head average SAR	0.08 W/kg
Peak spatial-average SAR (extremities) (averaged over any 10 grams of tissue)	4.0 W/kg

Annex B. Test Results

The herein test results were performed by:

Test case measurement	Test Personnel
Conducted measurement	F. Heurtematte
SAR measurement	M.FARIA

B.1 Test Conditions

B.1.1 Test SAR Test positions relative to the phantom

The device under test was an Intel® Wi-Fi 6 AX203 card inside a Convertible host platform (ThinkBook 14 2-in1 G4 IML) using a set of PIFA antennas. The card was operated utilizing proprietary software (DRTU version DRTU.04824.23.0.0) and each channel was measured using a broadband power meter to determine the maximum average power.

According to FCC OET KDB 616217 D04, the back surface and edges of the tablet should be tested for SAR compliance with the tablet touching the phantom. The SAR Test Exclusion Threshold in FCC OET KDB 447498 can be applied to determine SAR test exclusion for adjacent edge configurations.

The closest distance from the antenna to an adjacent tablet edge is used to determine if SAR testing is required for the adjacent edges, with the adjacent edge positioned against the phantom and the edge containing the antenna positioned perpendicular to the phantom.

Antenna	Aux	Main
Position	<ul style="list-style-type: none"> • Laptop • Back Face • Right Edge • Bottom Edge 	<ul style="list-style-type: none"> • Laptop • Back Face • Left Edge • Bottom Edge

See B.1.3.1 for a more detailed list of the applied reductions.

See F.2 Test positions section for more information on the tested positions.

B.1.2 Test signal, Output power and Test Frequencies

For 802.11 transmission modes the device was put into operation by using an own control software to program the test mode required to select the continuous transmission with 100% duty cycle.

The output power of the device was set to transmit at maximum power for all tests.

B.1.3 Evaluation Exclusion and Test Reductions

B.1.3.1 SAR evaluation exclusion

For FCC:

The SAR Test Exclusion Threshold in FCC OET KDB 447498 can be applied to determine SAR test exclusion for adjacent edge configurations. For 100MHz to 6GHz and test separation distances ≤ 50 mm, the 1-g and 10-g SAR test exclusion thresholds are determined by the following formula:

$$\left[\frac{\text{(max. power of channel, including tune – up tolerance, mW)}}{\text{(min. test separation distance, mm)}} \cdot \left[\sqrt{f_{\text{(GHz)}}} \right] \right] \leq 3.0 \text{ for } 1g \text{ SAR, and } \leq 7.5 \text{ for } 10g \text{ extremity SAR} \quad (1)$$

Where:

- $f_{\text{(GHz)}}$ is the RF channel transmit frequency in GHz
- Power and distance are rounded to the nearest mW and mm before calculation
- The result is rounded to one decimal place for comparison
- The values 3.0 and 7.5 are referred to as numeric thresholds

The test exclusions are applicable only when the minimum test separation distance is ≤ 50 mm, and for transmission frequencies between 100 MHz and 6 GHz. When the minimum test separation distance is < 5 mm, a distance of 5 mm is applied to determine SAR test exclusion.

For test separation distances > 50 mm, the 1-g and 10-g SAR test exclusion thresholds are determined using the following formulas:

$$\left(\left(\text{Power allowed at numeric threshold for } 50 \text{ mm in (1)} \right) + \left(\text{test separation distance} - 50 \text{ mm} \right) \cdot \left(f_{\text{MHz}} / 150 \right) \right) \text{mW,} \quad (2)$$

for 100MHz to 1500MHz

$$\left(\left(\text{Power allowed at numeric threshold for } 50 \text{ mm in (1)} \right) + \left(\text{test separation distance} - 50 \text{ mm} \right) \cdot 10 \right) \text{mW,} \quad (3)$$

for 1500MHz and ≤ 6 GHz

For ISED:

According to RSS-102 section 2.5.1, SAR evaluation is required if the separation distance between the user and/or bystander and the antenna and/or radiating element of the device is less than or equal to 20 cm, except when the device operates at or below the applicable output power level (adjusted for tune-up tolerance) for the specified separation distance defined in Table below:

SAR evaluation — Exemption limits for routine evaluation based on frequency and separation distance					
Frequency	Exemption Limits (mW)				
(MHz)	At separation distance of ≤5 mm	At separation distance of 10 mm	At separation distance of 15 mm	At separation distance of 20 mm	At separation distance of 25 mm
≤300	71 mW	101 mW	132 mW	162 mW	193 mW
450	52 mW	70 mW	88 mW	106 mW	123 mW
835	17 mW	30 mW	42 mW	55 mW	67 mW
1900	7 mW	10 mW	18 mW	34 mW	60 mW
2450	4 mW	7 mW	15 mW	30 mW	52 mW
3500	2 mW	6 mW	16 mW	32 mW	55 mW
5800	1 mW	6 mW	15 mW	27 mW	41 mW
Frequency	Exemption Limits (mW)				
(MHz)	At separation distance of 30 mm	At separation distance of 35 mm	At separation distance of 40 mm	At separation distance of 45 mm	At separation distance of ≥50 mm
≤300	223 mW	254 mW	284 mW	315 mW	345 mW
450	141 mW	159 mW	177 mW	195 mW	213 mW
835	80 mW	92 mW	105 mW	117 mW	130 mW
1900	99 mW	153 mW	225 mW	316 mW	431 mW
2450	83 mW	123 mW	173 mW	235 mW	309 mW
3500	86 mW	124 mW	170 mW	225 mW	290 mW
5800	56 mW	71 mW	85 mW	97 mW	106 mW



WLAN Antenna	Band Name	Output power Notebook mode		Output power Tablet mode		Laptop	Back Face	Top Edge	Right Edge	Left Edge	Bottom Edge
		dBm	mW	dBm	mW						
Aux	DTS	15.00	31.62	15.00	31.62	<50	<50	>50	<50	>50	<50
	U-NII-1	13.50	22.39	10.00	10.00	<50	<50	>50	<50	>50	<50
	U-NII-2A	13.50	22.39	10.00	10.00	<50	<50	>50	<50	>50	<50
	U-NII-2C	13.50	22.39	11.00	12.59	<50	<50	>50	<50	>50	<50
	U-NII-3	13.50	22.39	11.00	12.59	<50	<50	>50	<50	>50	<50
	U-NII-4	13.50	22.39	10.50	11.22	<50	<50	>50	<50	>50	<50
	BT	10.00	10.00	10.00	10.00	<50	<50	>50	<50	>50	<50
Main	DTS	15.00	31.62	15.00	31.62	<50	<50	>50	>50	<50	<50
	U-NII-1	12.00	15.85	9.00	7.94	<50	<50	>50	>50	<50	<50
	U-NII-2A	12.00	15.85	9.00	7.94	<50	<50	>50	>50	<50	<50
	U-NII-2C	12.00	15.85	9.00	7.94	<50	<50	>50	>50	<50	<50
	U-NII-3	12.50	17.78	9.50	8.91	<50	<50	>50	>50	<50	<50
	U-NII-4	12.50	17.78	9.50	8.91	<50	<50	>50	>50	<50	<50

Laptop	Back Face*	Top Edge*	Right Edge*	Left Edge*	Bottom Edge
T	R	R	R	R	T
T	R	R	R	R	T
T	R	R	R	R	T
T	R	R	R	R	T
T	R	R	R	R	T
T	R	R	R	R	T
T	R	R	R	R	T
T	R	R	R	R	T
T	R	R	R	R	T
T	R	R	R	R	T

T: Tested position
R: Reduced

* Top Edge, Back Face, Right Edge and Left Edge positions are covered by following modular report: 220601-10.TR03

See Annex F for a more detailed explanation of the separation distance related to the platform.

B.1.3.2 General SAR test reduction

According to FCC OET KDB 447498, testing of other required channels within the operating mode of a frequency band is not required when the reported 1-g or 10-g SAR for the mid-band or highest output power channel is:

- ≤ 0.8 W/kg or 2.0 W/kg, for 1-g or 10-g respectively, when the transmission band is ≤ 100 MHz
- ≤ 0.6 W/kg or 1.5 W/kg, for 1-g or 10-g respectively, when the transmission band is between 100 MHz and 200 MHz
- ≤ 0.4 W/kg or 1.0 W/kg, for 1-g or 10-g respectively, when the transmission band is ≥ 200 MHz

WLAN SAR Test reduction

Transmission Mode	SAR test exclusion/reduction
DSSS	<p>According to FCC OET KDB 248227 D01, SAR is measured for 2.4 GHz 802.11b, SAR test reduction is determined according to the following:</p> <ul style="list-style-type: none"> ▪ When the reported SAR of the highest measured maximum output power channel for the exposure configuration is ≤ 0.8 W/kg, no further SAR testing is required for 802.11b DSSS in that exposure configuration. ▪ When the reported SAR is > 0.8 W/kg, SAR is required for that exposure configuration using the next highest measured output power channel. When any reported SAR is > 1.2 W/kg, SAR is required for the third channel. <p>According to FCC OET KDB 248227 D01, SAR is not required for 2.4 GHz OFDM conditions when the highest reported SAR for DSSS is adjusted by the ratio of OFDM to DSSS specified maximum output power and the adjusted SAR is ≤ 1.2 W/kg.</p>
OFDM	<p>According to FCC OET KDB 248227 D01, 802.11a/g/n/ac modes have the same specified maximum output power, largest channel bandwidth, lowest order modulation and lowest data rate, the lowest order 802.11 mode is selected; i.e., 802.11a is chosen over 802.11n then 802.11ac or 802.11g is chosen over 802.11n.</p> <p>According to FCC OET KDB 248227 D01, an <i>initial test configuration</i> is determined for OFDM and DSSS transmission modes according to the channel bandwidth, modulation and data rate combination(s) with the highest maximum output power specified for production units in each standalone and aggregated frequency band. SAR is measured using the highest measured maximum output power channel. SAR test reduction for subsequent highest output test channels is determined according to reported SAR of the initial test configuration.</p> <p>The <i>initial test configuration</i> for 5 GHz OFDM transmission modes is determined by the 802.11 configuration with the highest maximum output power specified for production units, including tune-up tolerance, in each standalone and aggregated frequency band. SAR for the initial test configuration is measured using the highest maximum output power channel determined by the default power measurement procedures.</p> <p>According to FCC OET KDB 248227 D01, when the reported SAR of the initial test configuration is > 0.8 W/kg, SAR measurement is required for subsequent next highest measured output power channel(s) in the initial test configuration until reported SAR is ≤ 1.2 W/kg or all required channels are tested.</p>

B.2 Conducted Power Measurements

B.2.1 WLAN 2.4GHz – Notebook Mode

					Average Power (dBm) - Main		Average Power (dBm) - Aux	
Band	Mode	Data Rate	Ch#	Freq (MHz)	Avg Pwr (dBm)	Tune-up Pwr (dBm)	Avg Pwr (dBm)	Tune-up Pwr (dBm)
DTS	802.11b	1	1	2412	14.97	15.00	14.94	15.00
			6	2437	14.73	15.00	14.75	15.00
			11	2462	14.86	15.00	14.82	15.00
	802.11g	6	1	2412	NR	15.00	NR	15.00
			6	2437		15.00		15.00
			11	2462		15.00		15.00
	802.11n20	HT0	1	2412		15.00		15.00
			6	2437		15.00		15.00
			11	2462		15.00		15.00
	802.11ax20	MCS0	1	2412		15.00		15.00
			6	2437		15.00		15.00
			11	2462		15.00		15.00
	802.11n40	HT0	3	2422		15.00		15.00
			6	2437		15.00		15.00
			9	2452		15.00		15.00
	802.11ax40	MCS0	3	2422		15.00		15.00
			6	2437		15.00		15.00
			9	2452		15.00		15.00

Initial test configuration

1. NR: Not Required
2. As per FCC OET KDB 248227 D01, conducted output power and SAR testing are not required for 802.11g/n/ax channels when the highest reported SAR for DSSS is adjusted by the ratio of OFDM to DSSS specified maximum output power and the adjusted SAR is $\leq 1.2\text{W/kg}$.
3. When the reported SAR of the initial test configuration is $> 0.8\text{ W/kg}$, SAR measurement is required for subsequent next highest measured output power channel(s) in the initial test configuration until reported SAR is $\leq 1.2\text{ W/kg}$ or all required channels are tested.

B.2.2 WLAN 2.4GHz – Tablet Mode

					Average Power (dBm) - Main		Average Power (dBm) - Aux	
Band	Mode	Data Rate	Ch#	Freq (MHz)	Avg Pwr (dBm)	Tune-up Pwr (dBm)	Avg Pwr (dBm)	Tune-up Pwr (dBm)
DTS	802.11b	1	1	2412	14.86	15.00	14.91	15.00
			6	2437	14.58	15.00	14.75	15.00
			11	2462	14.74	15.00	14.81	15.00
	802.11g	6	1	2412	NR	15.00	NR	15.00
			6	2437				
			11	2462				
	802.11n20	HT0	1	2412				
			6	2437				
			11	2462				
	802.11ax20	MCS0	1	2412				
			6	2437				
			11	2462				
	802.11n40	HT0	3	2422				
			6	2437				
			9	2452				
	802.11ax40	MCS0	3	2422				
			6	2437				
			9	2452				

Initial test configuration

4. NR: Not Required
5. As per FCC OET KDB 248227 D01, conducted output power and SAR testing are not required for 802.11g/n/ax channels when the highest reported SAR for DSSS is adjusted by the ratio of OFDM to DSSS specified maximum output power and the adjusted SAR is ≤ 1.2 W/kg.
6. When the reported SAR of the initial test configuration is > 0.8 W/kg, SAR measurement is required for subsequent next highest measured output power channel(s) in the initial test configuration until reported SAR is ≤ 1.2 W/kg or all required channels are tested.

B.2.3 WLAN 5GHz (U-NII)

B.2.3.1 5.2GHz and 5.3GHz (U-NII-1 and U-NII-2A) - Notebook Mode

					Average Power (dBm) - Main		Average Power (dBm) - Aux	
Band	Mode	Data Rate	Ch#	Freq (MHz)	Avg Pwr (dBm)	Tune-up Pwr (dBm)	Avg Pwr (dBm)	Tune-up Pwr (dBm)
UNII-1	802.11a20	6	36	5180	NR	12.00	NR	13.50
			40	5200		12.00		13.50
			44	5220		12.00		13.50
			48	5240		12.00		13.50
	802.11n20	HT0	36	5180		12.00		13.50
			40	5200		12.00		13.50
			44	5220		12.00		13.50
			48	5240		12.00		13.50
	802.11ax20	MCS0	36	5180		12.00		13.50
			40	5200		12.00		13.50
			44	5220		12.00		13.50
			48	5240		12.00		13.50
	802.11n40	HT0	38	5190		12.00		13.50
			46	5230		12.00		13.50
	802.11ax40	MCS0	38	5190		12.00		13.50
			46	5230		12.00		13.50
802.11ac80	VHT0	42	5210	12.00	13.50			
802.11ax80	MCS0	42	5210	12.00	13.50			

Initial test configuration

- NR: Not Required
- When the same maximum output power is specified for both bands, begin SAR measurement in U-NII-2A band by applying the OFDM SAR requirements. If the highest reported SAR for a test configuration is ≤ 1.2 W/kg, SAR is not required for U-NII-1 band (see §B.5.2 in this document).
- Additional conducted power measurement is required when reported SAR is > 1.2 W/kg. In case the subsequent test configuration and the channel bandwidth is smaller than the initial test configuration, all channels that overlap with the larger channel bandwidth in the initial configuration should be tested.
- The initial test configuration for 2.4 GHz and 5 GHz OFDM transmission modes is determined by the 802.11 configuration with the highest maximum output power specified for production units, including tune-up tolerance, in each standalone and aggregated frequency band. SAR for the initial test configuration is measured using the highest maximum output power channel determined by the default power measurement procedures. When multiple transmission modes (802.11a/g/n/ac) have the same specified maximum output power, largest channel bandwidth, lowest order modulation and lowest data rate, lowest order 802.11 mode is selected (i.e. a, g, n, ac then ax)
- When the reported SAR of the initial test configuration is > 0.8 W/kg, SAR measurement is required for the subsequent next highest measured output power channel(s) in the initial test configuration until reported SAR is $=1.2$ W/kg or all required channels are tested.
- When the highest reported SAR for the initial test configuration (when applicable, include subsequent highest output channels), according to the initial test position or fixed exposure requirements, is adjusted by the ratio of the subsequent test configuration to the initial test configuration specified maximum output power and the adjusted SAR is ≤ 1.2 W/kg, SAR is not required for that subsequent test configuration
- SAR for subsequent highest measured maximum output power channels in the subsequent test configuration is required only when the reported SAR of the preceding higher maximum output power channel(s) in the subsequent test configuration is >1.2 W/kg or until all required channels are tested.

					Average Power (dBm) - Main		Average Power (dBm) - Aux			
Band	Mode	Data Rate	Ch#	Freq (MHz)	Avg Pwr (dBm)	Tune-up Pwr (dBm)	Avg Pwr (dBm)	Tune-up Pwr (dBm)		
UNII-2A	802.11a20	6	52	5260	NR	12.00	NR	13.50		
			56	5280		12.00		13.50		
			60	5300		12.00		13.50		
			64	5320		12.00		13.50		
	802.11n20	HT0	52	5260		12.00		13.50		
			56	5280		12.00		13.50		
			60	5300		12.00		13.50		
			64	5320		12.00		13.50		
	802.11ax20	MCS0	52	5260		12.00		13.50		
			56	5280		12.00		13.50		
			60	5300		12.00		13.50		
			64	5320		12.00		13.50		
	802.11n40	HT0	54	5270		12.00		13.50		
			62	5310		12.00		13.50		
	802.11ax40	MCS0	54	5270		12.00		13.50		
			62	5310		12.00		13.50		
	802.11ac80	VHT0	58	5290		11.78		12.00	13.23	13.50
	802.11ax80	MCS0	58	5290		NR		12.00	NR	13.00

Initial test configuration

1. NR: Not Required
2. The initial test configuration for 2.4 GHz and 5 GHz OFDM transmission modes is determined by the 802.11 configuration with the highest maximum output power specified for production units, including tune-up tolerance, in each standalone and aggregated frequency band. SAR for the initial test configuration is measured using the highest maximum output power channel determined by the default power measurement procedures. When multiple transmission modes (802.11a/g/n/ac) have the same specified maximum output power, largest channel bandwidth, lowest order modulation and lowest data rate, lowest order 802.11 mode is selected (i.e. a, g, n, ac then ax)
3. Additional conducted power measurement is required when reported SAR is > 1.2W/kg. In case the subsequent test configuration and the channel bandwidth is smaller than the initial test configuration, all channels that overlap with the larger channel bandwidth in the initial configuration should be tested.
4. When the reported SAR of the initial test configuration is > 0.8W/kg, SAR measurement is required for the subsequent next highest measured output power channel(s) in the initial test configuration until reported SAR is ≤1.2W/kg or all required channels are tested.
5. When the highest reported SAR for the initial test configuration (when applicable, include subsequent highest output channels), according to the initial test position or fixed exposure requirements, is adjusted by the ratio of the subsequent test configuration to the initial test configuration specified maximum output power and the adjusted SAR is ≤1.2 W/kg, SAR is not required for that subsequent test configuration.
6. SAR for subsequent highest measured maximum output power channels in the subsequent test configuration is required only when the reported SAR of the preceding higher maximum output power channel(s) in the subsequent test configuration is >1.2 W/kg or until all required channels are tested.

B.2.3.2 5.2GHz and 5.3GHz (U-NII-1 and U-NII-2A) - Tablet Mode

					Average Power (dBm) - Main		Average Power (dBm) - Aux	
Band	Mode	Data Rate	Ch#	Freq (MHz)	Avg Pwr (dBm)	Tune-up Pwr (dBm)	Avg Pwr (dBm)	Tune-up Pwr (dBm)
UNII-1	802.11a20	6	36	5180	NR	9.00	NR	10.00
			40	5200		9.00		10.00
			44	5220		9.00		10.00
			48	5240		9.00		10.00
	802.11n20	HT0	36	5180		9.00		10.00
			40	5200		9.00		10.00
			44	5220		9.00		10.00
			48	5240		9.00		10.00
	802.11ax20	MCS0	36	5180		9.00		10.00
			40	5200		9.00		10.00
			44	5220		9.00		10.00
			48	5240		9.00		10.00
	802.11n40	HT0	38	5190		9.00		10.00
			46	5230		9.00		10.00
	802.11ax40	MCS0	38	5190		9.00		10.00
			46	5230		9.00		10.00
	802.11ac80	VHT0	42	5210		9.00		10.00
	802.11ax80	MCS0	42	5210		9.00		10.00

Initial test configuration

8. NR: Not Required
9. When the same maximum output power is specified for both bands, begin SAR measurement in U-NII-2A band by applying the OFDM SAR requirements. If the highest reported SAR for a test configuration is ≤ 1.2 W/kg, SAR is not required for U-NII-1 band (see §B.5.2 in this document).
10. Additional conducted power measurement is required when reported SAR is > 1.2 W/kg. In case the subsequent test configuration and the channel bandwidth is smaller than the initial test configuration, all channels that overlap with the larger channel bandwidth in the initial configuration should be tested.
11. The initial test configuration for 2.4 GHz and 5 GHz OFDM transmission modes is determined by the 802.11 configuration with the highest maximum output power specified for production units, including tune-up tolerance, in each standalone and aggregated frequency band. SAR for the initial test configuration is measured using the highest maximum output power channel determined by the default power measurement procedures. When multiple transmission modes (802.11a/g/n/ac) have the same specified maximum output power, largest channel bandwidth, lowest order modulation and lowest data rate, lowest order 802.11 mode is selected (i.e. a, g, n, ac then ax)
12. When the reported SAR of the initial test configuration is > 0.8 W/kg, SAR measurement is required for the subsequent next highest measured output power channel(s) in the initial test configuration until reported SAR is $=1.2$ W/kg or all required channels are tested.
13. When the highest reported SAR for the initial test configuration (when applicable, include subsequent highest output channels), according to the initial test position or fixed exposure requirements, is adjusted by the ratio of the subsequent test configuration to the initial test configuration specified maximum output power and the adjusted SAR is ≤ 1.2 W/kg, SAR is not required for that subsequent test configuration
14. SAR for subsequent highest measured maximum output power channels in the subsequent test configuration is required only when the reported SAR of the preceding higher maximum output power channel(s) in the subsequent test configuration is >1.2 W/kg or until all required channels are tested.

					Average Power (dBm) - Main		Average Power (dBm) - Aux			
Band	Mode	Data Rate	Ch#	Freq (MHz)	Avg Pwr (dBm)	Tune-up Pwr (dBm)	Avg Pwr (dBm)	Tune-up Pwr (dBm)		
UNII-2A	802.11a20	6	52	5260	NR	9.00	NR	10.00		
			56	5280		9.00		10.00		
			60	5300		9.00		10.00		
			64	5320		9.00		10.00		
	802.11n20	HT0	52	5260		9.00		10.00		
			56	5280		9.00		10.00		
			60	5300		9.00		10.00		
			64	5320		9.00		10.00		
	802.11ax20	MCS0	52	5260		9.00		10.00		
			56	5280		9.00		10.00		
			60	5300		9.00		10.00		
			64	5320		9.00		10.00		
	802.11n40	HT0	54	5270		9.00		10.00		
			62	5310		9.00		10.00		
	802.11ax40	MCS0	54	5270		9.00		10.00		
			62	5310		9.00		10.00		
	802.11ac80	VHT0	58	5290		8.77		9.00	9.61	10.00
	802.11ax80	MCS0	58	5290		NR		9.00	NR	10.00

Initial test configuration

7. NR: Not Required
8. The initial test configuration for 2.4 GHz and 5 GHz OFDM transmission modes is determined by the 802.11 configuration with the highest maximum output power specified for production units, including tune-up tolerance, in each standalone and aggregated frequency band. SAR for the initial test configuration is measured using the highest maximum output power channel determined by the default power measurement procedures. When multiple transmission modes (802.11a/g/n/ac) have the same specified maximum output power, largest channel bandwidth, lowest order modulation and lowest data rate, lowest order 802.11 mode is selected (i.e. a, g, n, ac then ax)
9. Additional conducted power measurement is required when reported SAR is > 1.2W/kg. In case the subsequent test configuration and the channel bandwidth is smaller than the initial test configuration, all channels that overlap with the larger channel bandwidth in the initial configuration should be tested.
10. When the reported SAR of the initial test configuration is > 0.8W/kg, SAR measurement is required for the subsequent next highest measured output power channel(s) in the initial test configuration until reported SAR is ≤1.2W/kg or all required channels are tested.
11. When the highest reported SAR for the initial test configuration (when applicable, include subsequent highest output channels), according to the initial test position or fixed exposure requirements, is adjusted by the ratio of the subsequent test configuration to the initial test configuration specified maximum output power and the adjusted SAR is ≤1.2 W/kg, SAR is not required for that subsequent test configuration.
12. SAR for subsequent highest measured maximum output power channels in the subsequent test configuration is required only when the reported SAR of the preceding higher maximum output power channel(s) in the subsequent test configuration is >1.2 W/kg or until all required channels are tested.

B.2.3.3 5.6 (U-NII-2C) – Notebook Mode

					Average Power (dBm) - Main		Average Power (dBm) - Aux			
Band	Mode	Data Rate	Ch#	Freq (MHz)	Avg Pwr (dBm)	Tune-up Pwr (dBm)	Avg Pwr (dBm)	Tune-up Pwr (dBm)		
UNII-2C	802.11a20	6	100	5500	NR	12.00	NR	13.50		
			104	5520		12.00		13.50		
			108	5540		12.00		13.50		
			112	5560		12.00		13.50		
			116	5580		12.00		13.50		
			120	5600		12.00		13.50		
			124	5620		12.00		13.50		
			128	5640		12.00		13.50		
	802.11n20	HT0	100	5500		12.00		13.50		
			104	5520		12.00		13.50		
			108	5540		12.00		13.50		
			112	5560		12.00		13.50		
			116	5580		12.00		13.50		
			120	5600		12.00		13.50		
			124	5620		12.00		13.50		
			128	5640		12.00		13.50		
	802.11ax20	MCS0	100	5500		12.00		13.50		
			104	5520		12.00		13.50		
			108	5540		12.00		13.50		
			112	5560		12.00		13.50		
			116	5580		12.00		13.50		
			120	5600		12.00		13.50		
			124	5620		12.00		13.50		
			128	5640		12.00		13.50		
	802.11n40	HT0	102	5510		12.00		13.50		
			110	5550		12.00		13.50		
			118	5590		12.00		13.50		
			126	5630		12.00		13.50		
	802.11ax40	MCS0	102	5510		12.00		13.50		
			110	5550		12.00		13.50		
			118	5590		12.00		13.50		
			126	5630		12.00		13.50		
	802.11ac80	VHT0	106	5530		11.84		12.00	13.38	13.50
			122	5610		11.78		12.00	13.08	13.50
	802.11ax80	MCS0	106	5530		NR		12.00	NR	13.50
			122	5610		NR		12.00	NR	13.50

Initial test configuration

1. NR: Not Required

Test Report N° 231213-02.TR02

2. When band gap channels between U-NII-2C and U-NII-3 band are supported channels in U-NII-2C band below 5.65 GHz are considered as one band and channels above 5.65 GHz, together with channels in 5.8 GHz U-NII-3 or §15.247 band, are considered as a separate band
3. Additional conducted power measurement is required when reported SAR is $> 1.2\text{W/kg}$. In case the subsequent test configuration and the channel bandwidth is smaller than the initial test configuration, all channels that overlap with the larger channel bandwidth in the initial configuration should be tested
4. The initial test configuration for 2.4 GHz and 5 GHz OFDM transmission modes is determined by the 802.11 configuration with the highest maximum output power specified for production units, including tune-up tolerance, in each standalone and aggregated frequency band. SAR for the initial test configuration is measured using the highest maximum output power channel determined by the default power measurement procedures. When multiple transmission modes (802.11a/g/n/ac) have the same specified maximum output power, largest channel bandwidth, lowest order modulation and lowest data rate, lowest order 802.11 mode is selected (i.e. a, g, n, ac then ax)
5. When the reported SAR of the initial test configuration is $> 0.8\text{W/kg}$, SAR measurement is required for the subsequent next highest measured output power channel(s) in the initial test configuration until reported SAR is $\leq 1.2\text{W/kg}$ or all required channels are tested.
6. When the highest reported SAR for the initial test configuration (when applicable, include subsequent highest output channels), according to the initial test position or fixed exposure requirements, is adjusted by the ratio of the subsequent test configuration to the initial test configuration specified maximum output power and the adjusted SAR is $\leq 1.2\text{ W/kg}$, SAR is not required for that subsequent test configuration.
7. SAR for subsequent highest measured maximum output power channels in the subsequent test configuration is required only when the reported SAR of the preceding higher maximum output power channel(s) in the subsequent test configuration is $> 1.2\text{ W/kg}$ or until all required channels are tested.

B.2.3.4 5.6 (U-NII-2C) – Tablet Mode

					Average Power (dBm) - Main		Average Power (dBm) - Aux			
Band	Mode	Data Rate	Ch#	Freq (MHz)	Avg Pwr (dBm)	Tune-up Pwr (dBm)	Avg Pwr (dBm)	Tune-up Pwr (dBm)		
UNII-2C	802.11a20	6	100	5500	NR	9.00	NR	10.00		
			104	5520		9.00		10.00		
			108	5540		9.00		10.00		
			112	5560		9.00		10.00		
			116	5580		9.00		10.00		
			120	5600		9.00		11.00		
			124	5620		9.00		11.00		
			128	5640		9.00		11.00		
	802.11n20	HT0	100	5500		9.00		11.00		
			104	5520		9.00		11.00		
			108	5540		9.00		11.00		
			112	5560		9.00		11.00		
			116	5580		9.00		11.00		
			120	5600		9.00		11.00		
			124	5620		9.00		11.00		
			128	5640		9.00		11.00		
	802.11ax20	MCS0	100	5500		9.00		11.00		
			104	5520		9.00		11.00		
			108	5540		9.00		11.00		
			112	5560		9.00		11.00		
			116	5580		9.00		11.00		
			120	5600		9.00		11.00		
			124	5620		9.00		11.00		
			128	5640		9.00		11.00		
	802.11n40	HT0	102	5510		9.00		11.00		
			110	5550		9.00		11.00		
			118	5590		9.00		11.00		
			126	5630		9.00		11.00		
	802.11ax40	MCS0	102	5510		9.00		11.00		
			110	5550		9.00		11.00		
			118	5590		9.00		11.00		
			126	5630		9.00		11.00		
	802.11ac80	VHT0	106	5530		8.93		9.00	10.74	11.00
			122	5610		8.83		9.00	10.71	11.00
	802.11ax80	MCS0	106	5530		NR		9.00	NR	11.00
			122	5610				9.00		11.00

Initial test configuration

Test Report N° 231213-02.TR02

8. NR: Not Required
9. When band gap channels between U-NII-2C and U-NII-3 band are supported channels in U-NII-2C band below 5.65 GHz are considered as one band and channels above 5.65 GHz, together with channels in 5.8 GHz U-NII-3 or §15.247 band, are considered as a separate band
10. Additional conducted power measurement is required when reported SAR is $> 1.2\text{W/kg}$. In case the subsequent test configuration and the channel bandwidth is smaller than the initial test configuration, all channels that overlap with the larger channel bandwidth in the initial configuration should be tested
11. The initial test configuration for 2.4 GHz and 5 GHz OFDM transmission modes is determined by the 802.11 configuration with the highest maximum output power specified for production units, including tune-up tolerance, in each standalone and aggregated frequency band. SAR for the initial test configuration is measured using the highest maximum output power channel determined by the default power measurement procedures. When multiple transmission modes (802.11a/g/n/ac) have the same specified maximum output power, largest channel bandwidth, lowest order modulation and lowest data rate, lowest order 802.11 mode is selected (i.e. a, g, n, ac then ax)
12. When the reported SAR of the initial test configuration is $> 0.8\text{W/kg}$, SAR measurement is required for the subsequent next highest measured output power channel(s) in the initial test configuration until reported SAR is $\leq 1.2\text{W/kg}$ or all required channels are tested.
13. When the highest reported SAR for the initial test configuration (when applicable, include subsequent highest output channels), according to the initial test position or fixed exposure requirements, is adjusted by the ratio of the subsequent test configuration to the initial test configuration specified maximum output power and the adjusted SAR is $\leq 1.2\text{ W/kg}$, SAR is not required for that subsequent test configuration.
14. SAR for subsequent highest measured maximum output power channels in the subsequent test configuration is required only when the reported SAR of the preceding higher maximum output power channel(s) in the subsequent test configuration is $> 1.2\text{ W/kg}$ or until all required channels are tested.

B.2.3.5 5.8GHz (U-NII-3) – Notebook Mode

					Average Power (dBm) - Main		Average Power (dBm) - Aux			
Band	Mode	Data Rate	Ch#	Freq (MHz)	Avg Pwr (dBm)	Tune-up Pwr (dBm)	Avg Pwr (dBm)	Tune-up Pwr (dBm)		
UNII-3	802.11a20	6	132	5660	NR	12.50	NR	13.50		
			136	5680		12.50		13.50		
			140	5700		12.50		13.50		
			144	5720		12.50		13.50		
			149	5745		12.50		13.50		
			153	5765		12.50		13.50		
			157	5785		12.50		13.50		
			161	5805		12.50		13.50		
	165	5825	12.50	13.50						
	802.11n20	HT0	132	5660		12.50		13.50		
			136	5680		12.50		13.50		
			140	5700		12.50		13.50		
			144	5720		12.50		13.50		
			149	5745		12.50		13.50		
			153	5765		12.50		13.50		
			157	5785		12.50		13.50		
			161	5805		12.50		13.50		
	165	5825	12.50	13.50						
	802.11ax20	MCS0	132	5660		12.50		13.50		
			136	5680		12.50		13.50		
			140	5700		12.50		13.50		
			144	5720		12.50		13.50		
			149	5745		12.50		13.50		
			153	5765		12.50		13.50		
			157	5785		12.50		13.50		
			161	5805		12.50		13.50		
	165	5825	12.50	13.50						
	802.11n40	HT0	134	5670		12.50		13.50		
			142	5710		12.50		13.50		
			151	5755		12.50		13.50		
			159	5795		12.50		13.50		
	802.11ax40	MCS0	134	5670		12.50		13.50		
			142	5710		12.50		13.50		
			151	5755		12.50		13.50		
			159	5795		12.50		13.50		
	802.11ac80	VHT0	138	5690		12.44		12.50	13.18	13.50
			155	5775		12.28		12.50	13.00	13.50

	802.11ax80	MCS0	138	5690		12.50		13.50
			155	5775		12.50		13.50

Initial test configuration

1. NR: Not Required
2. When band gap channels between U-NII-2C and U-NII-3 band are supported channels in U-NII-2C band below 5.65 GHz are considered as one band and channels above 5.65 GHz, together with channels in 5.8 GHz U-NII-3 or §15.247 band, are considered as a separate band
3. Additional conducted power measurement is required when reported SAR is > 1.2W/kg. In case the subsequent test configuration and the channel bandwidth is smaller than the initial test configuration, all channels that overlap with the larger channel bandwidth in the initial configuration should be tested
4. The initial test configuration for 2.4 GHz and 5 GHz OFDM transmission modes is determined by the 802.11 configuration with the highest maximum output power specified for production units, including tune-up tolerance, in each standalone and aggregated frequency band. SAR for the initial test configuration is measured using the highest maximum output power channel determined by the default power measurement procedures. When multiple transmission modes (802.11a/g/n/ac) have the same specified maximum output power, largest channel bandwidth, lowest order modulation and lowest data rate, lowest order 802.11 mode is selected (i.e. a, g, n, ac then ax)
5. When the reported SAR of the initial test configuration is > 0.8W/kg, SAR measurement is required for the subsequent next highest measured output power channel(s) in the initial test configuration until reported SAR is ≤1.2W/kg or all required channels are tested.
6. When the highest reported SAR for the initial test configuration (when applicable, include subsequent highest output channels), according to the initial test position or fixed exposure requirements, is adjusted by the ratio of the subsequent test configuration to the initial test configuration specified maximum output power and the adjusted SAR is ≤1.2 W/kg, SAR is not required for that subsequent test configuration.
7. SAR for subsequent highest measured maximum output power channels in the subsequent test configuration is required only when the reported SAR of the preceding higher maximum output power channel(s) in the subsequent test configuration is >1.2 W/kg or until all required channels are tested.

B.2.3.6 5.8GHz (U-NII-3) – Tablet Mode

					Average Power (dBm) - Main		Average Power (dBm) - Aux			
Band	Mode	Data Rate	Ch#	Freq (MHz)	Avg Pwr (dBm)	Tune-up Pwr (dBm)	Avg Pwr (dBm)	Tune-up Pwr (dBm)		
UNII-3	802.11a20	6	132	5660	NR	9.00	NR	11.00		
			136	5680		9.00		11.00		
			140	5700		9.00		11.00		
			144	5720		9.00		11.00		
			149	5745		9.00		11.00		
			153	5765		9.00		11.00		
			157	5785		9.00		11.00		
			161	5805		9.50		11.00		
			165	5825		9.50		11.00		
			802.11n20	HT0		132		5660	9.50	11.00
						136		5680	9.50	11.00
						140		5700	9.50	11.00
						144		5720	9.50	11.00
						149		5745	9.50	11.00
						153		5765	9.50	11.00
						157		5785	9.50	11.00
	161	5805				9.50		11.00		
	802.11ax20	MCS0	132	5660		9.50		11.00		
			136	5680		9.50		11.00		
			140	5700		9.50		11.00		
			144	5720		9.50		11.00		
			149	5745		9.50		11.00		
			153	5765		9.50		11.00		
			157	5785		9.50		11.00		
			161	5805		9.50		11.00		
	802.11n40	HT0	134	5670		9.50		11.00		
			142	5710		9.50		11.00		
			151	5755		9.50		11.00		
			159	5795		9.50		11.00		
	802.11ax40	MCS0	134	5670		9.50		11.00		
			142	5710		9.50		11.00		
			151	5755		9.50		11.00		
			159	5795		9.50		11.00		
	802.11ac80	VHT0	138	5690		9.29		9.50	10.68	11.00
			155	5775		9.20		9.50	10.63	11.00

	802.11ax80	MCS0	138	5690		9.50		11.00
			155	5775		9.50		11.00

Initial test configuration

8. NR: Not Required
9. When band gap channels between U-NII-2C and U-NII-3 band are supported channels in U-NII-2C band below 5.65 GHz are considered as one band and channels above 5.65 GHz, together with channels in 5.8 GHz U-NII-3 or §15.247 band, are considered as a separate band
10. Additional conducted power measurement is required when reported SAR is > 1.2W/kg. In case the subsequent test configuration and the channel bandwidth is smaller than the initial test configuration, all channels that overlap with the larger channel bandwidth in the initial configuration should be tested
11. The initial test configuration for 2.4 GHz and 5 GHz OFDM transmission modes is determined by the 802.11 configuration with the highest maximum output power specified for production units, including tune-up tolerance, in each standalone and aggregated frequency band. SAR for the initial test configuration is measured using the highest maximum output power channel determined by the default power measurement procedures. When multiple transmission modes (802.11a/g/n/ac) have the same specified maximum output power, largest channel bandwidth, lowest order modulation and lowest data rate, lowest order 802.11 mode is selected (i.e. a, g, n, ac then ax)
12. When the reported SAR of the initial test configuration is > 0.8W/kg, SAR measurement is required for the subsequent next highest measured output power channel(s) in the initial test configuration until reported SAR is ≤1.2W/kg or all required channels are tested.
13. When the highest reported SAR for the initial test configuration (when applicable, include subsequent highest output channels), according to the initial test position or fixed exposure requirements, is adjusted by the ratio of the subsequent test configuration to the initial test configuration specified maximum output power and the adjusted SAR is ≤1.2 W/kg, SAR is not required for that subsequent test configuration.
14. SAR for subsequent highest measured maximum output power channels in the subsequent test configuration is required only when the reported SAR of the preceding higher maximum output power channel(s) in the subsequent test configuration is >1.2 W/kg or until all required channels are tested.

B.2.4 Bluetooth – Notebook Mode

						Average Power (dBm)	
Band	Mode	Data Rate	Channel	Frequency (MHz)	Antenna	Avg Pwr (dBm)	Tune-up Pwr (dBm)
2.4 GHz (BT)	Bluetooth	Basic rate GFSK	0	2402	Aux	6.95	7.00
			39	2441	Aux	6.92	7.00
			78	2480	Aux	8.79	9.00
		Basic rate $\pi/4$ DQPSK	0	2402	Aux	NR ¹	8.00
			39	2441	Aux		8.00
			78	2480	Aux		8.00
		Basic rate 8-DPSK	0	2402	Aux		7.00
			39	2441	Aux		7.00
			78	2480	Aux		7.00
	BLE	Low energy GFSK	0	2402	Aux		7.00
			39	2441	Aux		7.00
			78	2480	Aux		7.00

Initial test configuration

1. NR: Not Required

B.2.1 Bluetooth – Tablet Mode

						Average Power (dBm)	
Band	Mode	Data Rate	Channel	Frequency (MHz)	Antenna	Avg Pwr (dBm)	Tune-up Pwr (dBm)
2.4 GHz (BT)	Bluetooth	Basic rate GFSK	0	2402	Aux	6.95	7.00
			39	2441	Aux	6.92	7.00
			78	2480	Aux	8.79	9.00
		Basic rate $\pi/4$ DQPSK	0	2402	Aux	NR ¹	8.00
			39	2441	Aux		8.00
			78	2480	Aux		8.00
		Basic rate 8-DPSK	0	2402	Aux		7.00
			39	2441	Aux		7.00
			78	2480	Aux		7.00
	BLE	Low energy GFSK	0	2402	Aux		7.00
			39	2441	Aux		7.00
			78	2480	Aux		7.00

initial test configuration

2. NR: Not Required

B.3 Tissue Parameters Measurement

Head TSL

Freq.(MHz)	Target Parameters		Measured TSL Parameters		Deviation (%)		Date
	ϵ' (F/m)	σ (S/m)	ϵ' (F/m)	σ (S/m)	Deviation ϵ'	Deviation σ	
2450	39.20	1.80	40.46	1.76	3.21	-2.22	2024-01-22
5200	35.99	4.66	36.07	4.33	0.22	-7.08	
5300	35.87	4.76	35.94	4.47	0.20	-6.09	
5500	35.64	4.96	35.66	4.70	0.06	-5.24	
5600	35.53	5.07	35.44	4.79	-0.25	-5.52	
5800	35.30	5.27	35.11	4.97	-0.54	-5.69	
5900	35.19	5.37	34.94	5.06	-0.71	-5.77	
2450	39.20	1.80	40.83	1.76	4.16	-2.22	2024-02-05
5200	35.99	4.66	36.60	4.33	1.69	-7.08	
5300	35.87	4.76	36.44	4.47	1.59	-6.09	
5500	35.64	4.96	36.11	4.69	1.32	-5.44	
5600	35.53	5.07	35.90	4.79	1.04	-5.52	
5800	35.30	5.27	35.58	4.96	0.79	-5.88	
5900	35.19	5.37	35.44	5.05	0.71	-5.96	
2450	39.20	1.80	41.69	1.79	6.35	-0.56	2024-02-08
5200	35.99	4.66	37.22	4.43	3.42	-4.94	
5300	35.87	4.76	37.07	4.57	3.35	-3.99	
5500	35.64	4.96	36.74	4.79	3.09	-3.43	
5600	35.53	5.07	36.53	4.89	2.81	-3.55	
5800	35.30	5.27	36.20	5.07	2.55	-3.80	
5900	35.19	5.37	36.04	5.16	2.42	-3.91	

See Annex D for more details.

B.4 System Check Measurements

Head Measurements

Frequency (MHz)	Average	Target SAR (W/kg)	Measured SAR (W/kg)	Forwarded Power (mW)_	Deviation to target (%)	Limit (%)	Date
2450	1g	51.00	47.40	50.12	-7.06	± 10	2024-01-23
	10g	23.80	23.80		0.00		
	1g	51.00	47.80	50.12	-6.27		2024-02-06
	10g	23.80	22.60		-5.04		
	1g	51.00	47.60	50.12	-6.67		2024-02-07
	10g	23.80	22.40		-5.88		
	1g	51.00	51.37	45.71	0.73		2024-02-08
	10g	23.80	24.00		0.84		
5300	1g	81.90	77.02	33.11	-5.96	± 10	2024-02-06
	10g	23.00	24.07		4.65		
	1g	81.90	77.39	45.71	-5.51		2024-02-07
	10g	23.00	22.17		-3.61		
	1g	81.90	78.54	45.71	-4.10		2024-02-08
	10g	23.00	22.53		-2.04		
5500	1g	86.40	83.36	34.67	-3.52	± 10	2024-02-06
	10g	24.00	25.56		6.50		
	1g	86.40	83.20	50.12	-3.70		2024-02-07
	10g	24.00	23.60		-1.67		
	1g	86.40	83.81	45.71	-3.00		2024-02-08
	10g	24.00	23.85		-0.62		
5600	1g	83.50	77.33	38.02	-7.39	± 10	2024-02-06
	10g	23.90	23.75		-0.63		
	1g	84.60	82.20	50.12	-2.84		2024-02-07
	10g	23.80	23.20		-2.52		
	1g	84.60	78.40	50.12	-7.33		2024-02-08
	10g	23.80	22.20		-6.72		
5800	1g	82.30	74.91	36.31	-8.98	± 10	2024-02-06
	10g	22.80	23.02		0.96		
	1g	82.30	76.12	45.71	-7.51		2024-02-07
	10g	22.80	21.84		-4.21		
	1g	82.30	79.43	45.71	-3.49		2024-02-08
	10g	22.80	22.32		-2.11		

See Annex C for more details.

B.5 SAR Test Results

B.5.1 Bluetooth & 802.11b/g/n/ax – 2.4GHz – DTS

Antenna Manufacturer	Mode	Data rate	BW (MHz)	Channel Number	Freq (MHz)	Test position mode	Antenna	Scaling Factor (dB)	Measured SAR 1g (W/kg)	Reported SAR 1g (W/kg)	Plot #	
AWAN	802.15	DH5	1	0	2402	Laptop	Aux	0.05	0.20	0.20		
						Bottom Edge	Aux	0.05	0.24	0.24		
	802.11b	1	20	1	2412	Laptop	Main	0.03	0.37	0.38		
							Aux	0.09	0.66	0.67		
						Bottom Edge	Main	0.14	0.70	0.72		
							Aux	0.09	0.68	0.70		
Luxshare	802.15	DH5	1	0	2402	Laptop	Aux	0.05	0.16	0.16		
						Bottom Edge	Aux	0.05	0.26	0.27		
	802.11b	1	20	1	2412	Laptop	Main	0.03	0.52	0.53		
							Aux	0.09	0.50	0.51		
						Bottom Edge	Main	0.14	0.96	1.00	1	
				Aux			0.09	0.85	0.87			
				6		2437	Bottom Edge	Main	0.42	0.77	0.85	
								Aux	0.25	0.85	0.90	
	11	2462	Bottom Edge	Aux	0.19	0.93	0.97					

B.5.2 802.11a/n/ac/ax – 5.3 GHz – U-NII-2A

Antenna Manufacturer	Mode	Data rate	BW (MHz)	Channel Number	Freq (MHz)	Test position mode	Antenna	Scaling Factor (dB)	Measured SAR 1g (W/kg)	Reported SAR 1g (W/kg)	Plot #
AWAN	802.11ac	VHT0	80	58	5290	Laptop	Main	0.22	0.71	0.75	
							Aux	0.27	0.62	0.67	
						Bottom Edge	Main	0.23	0.87	0.92	2
							Aux	0.39	0.57	0.63	
Luxshare	802.11ac	VHT0	80	58	5290	Laptop	Main	0.22	0.40	0.42	
							Aux	0.27	0.14	0.15	
						Bottom Edge	Main	0.23	0.50	0.53	
							Aux	0.39	0.83	0.91	

B.5.3 802.11a/n/ac/ax – 5.6 GHz – U-NII-2C

Antenna Manufacturer	Mode	Data rate	BW (MHz)	Channel Number	Freq (MHz)	Test position mode	Antenna	Scaling Factor (dB)	Measured SAR 1g (W/kg)	Reported SAR 1g (W/kg)	Plot #
AWAN	802.11ac	VHT0	80	106	5530	Laptop	Main	0.16	0.58	0.60	
							Aux	0.12	0.55	0.56	
						Bottom Edge	Main	0.07	0.98	1.00	
							Aux	0.44	0.82	0.90	
Luxshare	802.11ac	VHT0	80	122	5610	Bottom Edge	Main	0.17	0.98	1.02	3
							Aux	0.29	0.73	0.78	
						Laptop	Main	0.16	0.22	0.23	
							Aux	0.12	0.11	0.11	
Bottom Edge	Main	0.07	0.47	0.47							
	Aux	0.44	0.72	0.79							

B.5.4 802.11a/n/ac/ax – 5.8 GHz – U-NII-3

Antenna Manufacturer	Mode	Data rate	BW (MHz)	Channel Number	Freq (MHz)	Test position mode	Antenna	Scaling Factor (dB)	Measured SAR 1g (W/kg)	Reported SAR 1g (W/kg)	Plot #
AWAN	802.11ac	VHT0	80	138	5690	Laptop	Main	0.06	0.63	0.64	
							Aux	0.32	0.69	0.74	
						Bottom Edge	Main	0.32	0.92	0.99	3
							Aux	0.32	0.50	0.54	
Luxshare	802.11ac	VHT0	80	155	5775	Bottom Edge	Main	0.30	0.69	0.74	
							Aux	0.32	0.50	0.54	
						Laptop	Main	0.06	0.26	0.26	
							Aux	0.32	0.16	0.17	
Bottom Edge	Main	0.21	0.86	0.91							
	Aux	0.37	0.71	0.77							
				155	5775	Main	0.30	0.78	0.84		

B.5.5 SAR Measurement Variability

According to FCC OET KDB 865664, SAR Measurement variability is assessed when the maximum initial measured SAR is ≥ 0.8 W/kg for a certain band/mode. If the measured SAR value of the initial repeated measurement is < 1.45 W/kg with $< 20\%$ variation, only one repeated measurement is required to confirm that the results are not expected to have substantial variations.

A second repeated measurement is required only if the measured results for the initial repeated measurement are within 10% of the SAR limit or vary by more than 20%.

A third repeated measurement is required only if the original, first or second repeated measurement ≥ 1.5 W/kg and the ratio of largest to smallest SAR for the original, first and second repeated measurement is > 1.2 .

Band / Mode	Position	Ch #	Freq. (MHz)	Measured SAR 1g (W/kg)	1st Repeated SAR 1g (W/kg)	2nd Repeated SAR 1g (W/kg)	3rd Repeated SAR 1g (W/kg)	Highest Ratio
2.4 GHz / 802.11b – 20 MHz	Bottom Edge	1	2412	0.96	0.84	NR	NR	1.14
5.3 GHz / 802.11ac – 80 MHz	Bottom Edge	58	5290	0.86	0.80	NR	NR	1.07
5.5 GHz / 802.11ac – 80 MHz	Bottom Edge	106	5530	0.98	0.95	NR	NR	1.03
5.6 GHz / 802.11ac – 80 MHz	Bottom Edge	122	5610	0.98	0.96	NR	NR	1.02

B.5.6 Simultaneous Transmission SAR Evaluation

According to FCC OET KDB 447498, when the sum of 1g SAR for all simultaneously transmitting antennas in an operating mode and exposure condition combination is within the SAR limit, SAR test exclusion applies to that simultaneous transmission configuration.

All the values stated in the table below are the worst case found for standalone measurement with disregard of the transmission mode or channel where the worst case was found.

Antenna	Position	Highest Reported SAR (1g) (W/kg)		
		WLAN 2.4 GHz	WLAN 5GHz	Bluetooth
Main	Laptop	0.53	0.75	
Aux		0.67	0.74	0.20
Main	Bottom Edge	1.00	1.02	
Aux		0.97	0.91	0.27

Position	Simultaneous Tx Antenna Combination		Σ SAR 1g (W/kg)	Limit (W/kg)
	Main Antenna	Aux Antenna		
Laptop	WLAN 5GHz	WLAN 5GHz	1.49	1.6
	WLAN 5GHz	WLAN 5GHz + BT	1.69	
	WLAN 5GHz	BT	0.95	
	WLAN 2.4GHz	WLAN 2.4GHz	1.20	
	WLAN 2.4GHz	BT	0.73	
Bottom Edge	WLAN 5GHz	WLAN 5GHz	1.93	
	WLAN 5GHz	WLAN 5GHz + BT	2.20	
	WLAN 5GHz	BT	1.29	
	WLAN 2.4GHz	WLAN 2.4GHz	1.97	
	WLAN 2.4GHz	BT	1.27	

In case the sum of SAR is larger than the limit, SAR test exclusion is determined by the SAR to peak location separation ratio :

Position	Antenna	Reported SAR 1g (W/kg)	Σ SAR 1g (W/Kg)	Peak Location (mm) (x,y,z)	SPLSR	Limit
Laptop	Main WLAN 5GHz	0.75	1.69	(0.8, 101.7, -177.0)	0.01	0.04
	Aux WLAN 5GHz	0.74		(2.3, -105.0, -177.0)		
	Aux BT	0.20		(2.5, -107.0, -177.0)		
Bottom Edge	Main WLAN 5GHz	1.02	1.93	(-1.4, 97.6, -183.3)	0.01	
	Aux WLAN 5GHz	0.91		(1.0, -97.6, -177.0)		
	Main WLAN 5GHz	1.02	2.20	(-1.4, 97.6, -183.3)	0.02	
	Aux WLAN 5GHz	0.91		(1.0, -97.6, -177.0)		
	Aux BT	0.27		(0.5, -117.0, -177.0)		
		Main WLAN 2.4GHz	1.00	1.97	(2.5, 101.0, -177.0)	0.01
	Aux WLAN 2.4GHz	0.97	(0.5, -116.0, -177.0)			

Considering the results described above and according to the simultaneous transmission evaluation exclusions described in FCC OET KDB 447498, no enlarged zoom scan measurements are required.

Annex C. Test System Plots

1. DTS - 802.11b, CH1, Main Antenna – Botton Edge – Luxshare.....	51
2. U-NII-2A - 802.11ac80, CH58, Main Antenna – Bottom Edge – AWAN.....	52
3. U-NII-2C - 802.11ac80, CH122, Main Antenna – Bottom Edge – AWAN.....	53
4. U-NII-3 - 802.11ac80, CH138, Main Antenna – Bottom Edge – AWAN	54
5. System Check Head Liquid 2450MHz	55
6. System Check Head Liquid 5300MHz	56
7. System Check Head Liquid 5600MHz	57

1. DTS - 802.11b, CH1, Main Antenna – Botton Edge – Luxshare

Device under Test Properties

Model, Manufacturer	Dimensions [mm]	SN	DUT Type
ThinkBook 14 2-in1 G4 IML	315.0 x 225.0 x 18.0	4810UR010010A00A	Convertible PC

Exposure Conditions

Phantom Section, TSL	Position, Distance [mm]	Test Band	Group, UID	Frequency [MHz], Channel Number	Conversion Factor	TSL Conductivity [S/m]	TSL Permittivity
Flat, HSL	EDGE BOTTOM, 0.00	WLAN 2.4GHz	WLAN, 10415-AAA	2412.000, 1	7.28	1.73	40.5

Hardware Setup

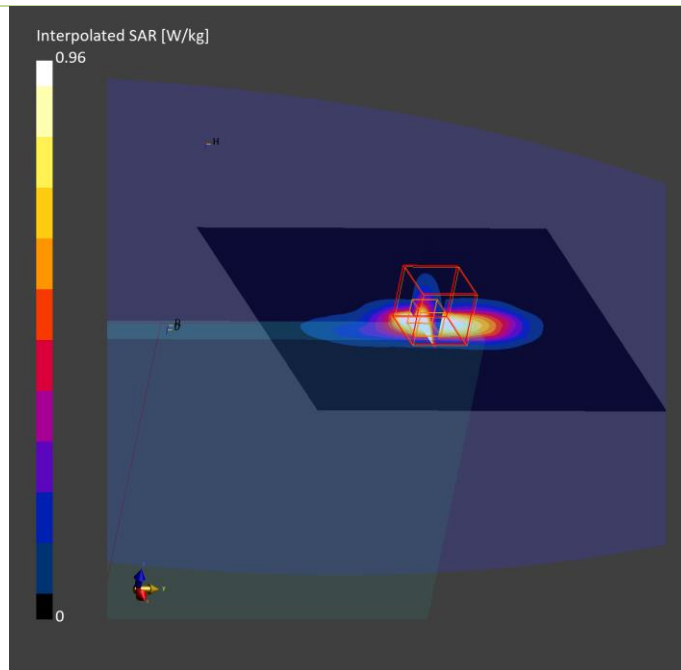
Phantom	TSL, Measured Date	Probe, Calibration Date	DAE, Calibration Date
ELI V8.0 (20deg probe tilt)	HBBL-600-10000, 2024-Jan-22	EX3DV4 - SN7455, 2023-03-16	DAE4ip Sn1703, 2023-04-18

Scan Setup

	Area Scan	Zoom Scan
Grid Extents [mm]	140.0 x 140.0	30.0 x 30.0 x 30.0
Grid Steps [mm]	10.0 x 10.0	5.0 x 5.0 x 1.5
Sensor Surface [mm]	3.0	1.4
Graded Grid	Yes	Yes
Grading Ratio	1.5	1.5
MAIA	Confirmed by MAIA	Confirmed by MAIA
Surface Detection	VMS + 6p	VMS + 6p
Scan Method	Measured	Measured

Measurement Results

	Area Scan	Zoom Scan
Date	2024-01-23, 22:57	2024-01-23, 23:05
psSAR1g [W/kg]	0.930	0.964
psSAR10g [W/kg]	0.434	0.432
Power Drift [dB]	-0.00	0.03
Power Scaling	Disabled	Disabled
Scaling Factor		
TSL Correction	Positive Only	Positive Only
M2/M1 [%]		77.0
Dist 3dB Peak [mm]		8.0



2. U-NII-2A - 802.11ac80, CH58, Main Antenna – Bottom Edge – AWAN

Device under Test Properties

Model, Manufacturer	Dimensions [mm]	SN	DUT Type
ThinkBook 14 2-in1 G4 IML	315.0 x 225.0 x 18.0	4810UR010010A004	Convertible PC

Exposure Conditions

Phantom Section, TSL	Position, Test Distance [mm]	Band	Group, UID	Frequency [MHz], Channel Number	Conversion Factor	TSL Conductivity [S/m]	TSL Permittivity
Flat, HSL	EDGE BOTTOM, 0.00	WLAN 5GHz	WLAN, 10402-AAF	5290.000, 58	5.19	4.56	37.1

Hardware Setup

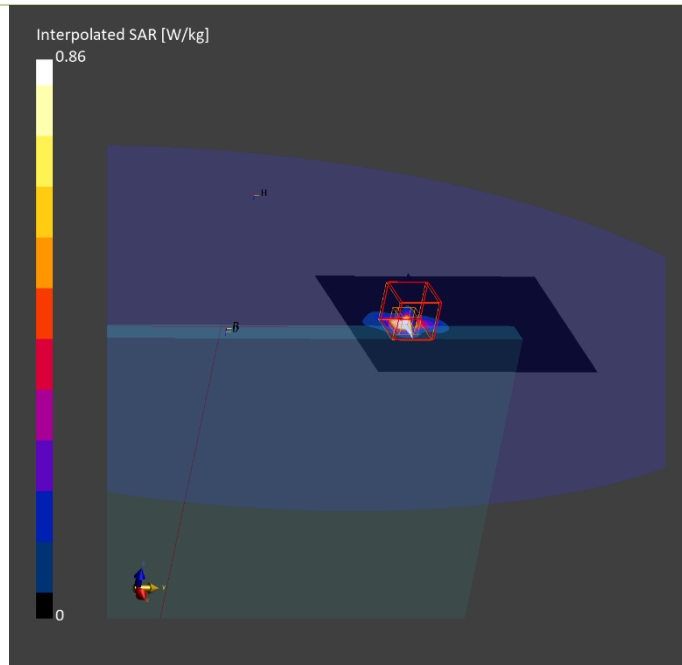
Phantom	TSL, Measured Date	Probe, Calibration Date	DAE, Calibration Date
ELI V8.0 (20deg probe tilt)	HBBL-600-10000, 2024-Feb-08	EX3DV4 - SN7455, 2023-03-16	DAE4ip Sn1658, 2023-09-08

Scan Setup

	Area Scan	Zoom Scan
Grid Extents [mm]	100.0 x 120.0	22.0 x 22.0 x 22.0
Grid Steps [mm]	10.0 x 10.0	3.8 x 3.8 x 1.4
Sensor Surface [mm]	3.0	1.4
Graded Grid	Yes	Yes
Grading Ratio	1.5	1.4
MAIA	Confirmed by MAIA	Confirmed by MAIA
Surface Detection	VMS + 6p	VMS + 6p
Scan Method	Measured	Measured

Measurement Results

	Area Scan	Zoom Scan
Date	2024-02-08, 11:12	2024-02-08, 11:28
psSAR1g [W/kg]	0.685	0.865
psSAR10g [W/kg]	0.160	0.172
Power Drift [dB]	-0.11	-0.04
Power Scaling	Disabled	Disabled
Scaling Factor [dB]		
TSL Correction	Positive Only	Positive Only
M2/M1 [%]		66.0
Dist 3dB Peak [mm]		4.1



3. U-NII-2C - 802.11ac80, CH122, Main Antenna – Bottom Edge – AWAN

Device under Test Properties

Model, Manufacturer	Dimensions [mm]	SN	DUT Type
ThinkBook 14 2-in1 G4 IML	315.0 x 225.0 x 18.0	4810UR010010A004	Convertible PC

Exposure Conditions

Phantom Section, TSL	Position, Test Distance [mm]	Band	Group, UID	Frequency [MHz], Channel Number	Conversion Factor	TSL Conductivity [S/m]	TSL Permittivity
Flat, HSL	EDGE BOTTOM, 0.00	WLAN 5GHz	WLAN, 10456-AAC	5610.000, 122	4.62	4.90	36.5

Hardware Setup

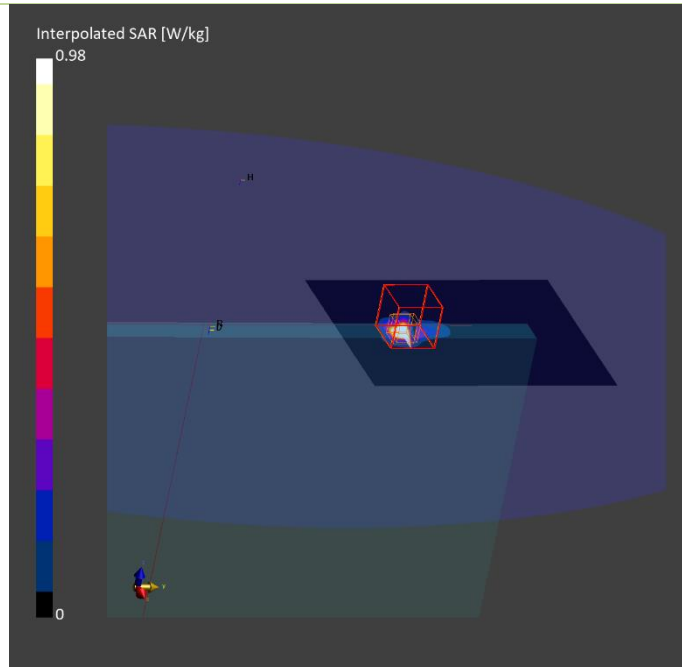
Phantom	TSL, Measured Date	Probe, Calibration Date	DAE, Calibration Date
ELI V8.0 (20deg probe tilt)	HBBL-600-10000, 2024-Feb-08	EX3DV4 - SN7455, 2023-03-16	DAE4ip Sn1658, 2023-09-08

Scan Setup

	Area Scan	Zoom Scan
Grid Extents [mm]	100.0 x 120.0	22.0 x 22.0 x 22.0
Grid Steps [mm]	10.0 x 10.0	3.8 x 3.8 x 1.4
Sensor Surface [mm]	3.0	1.4
Graded Grid	Yes	Yes
Grading Ratio	1.5	1.4
MAIA	Confirmed by MAIA	Confirmed by MAIA
Surface Detection	VMS + 6p	VMS + 6p
Scan Method	Measured	Measured

Measurement Results

	Area Scan	Zoom Scan
Date	2024-02-08, 10:05	2024-02-08, 10:21
psSAR1g [W/kg]	0.784	0.980
psSAR10g [W/kg]	0.173	0.201
Power Drift [dB]	0.00	-0.00
Power Scaling	Disabled	Disabled
Scaling Factor		
TSL Correction	Positive Only	Positive Only
M2/M1 [%]		63.6
Dist 3dB Peak [mm]		4.9



4. U-NII-3 - 802.11ac80, CH138, Main Antenna – Bottom Edge – AWAN

Device under Test Properties

Model, Manufacturer	Dimensions [mm]	SN	DUT Type
ThinkBook 14 2-in1 G4 IML	315.0 x 225.0 x 18.0	4810UR010010A004	Convertible PC

Exposure Conditions

Phantom Section, TSL	Position, Test Distance [mm]	Band	Group, UID	Frequency [MHz], Channel Number	Conversion Factor	TSL Conductivity [S/m]	TSL Permittivity
Flat, HSL	EDGE BOTTOM, 0.00	WLAN 5GHz	WLAN, 10402-AAF	5690.000, 138	4.62	4.98	36.4

Hardware Setup

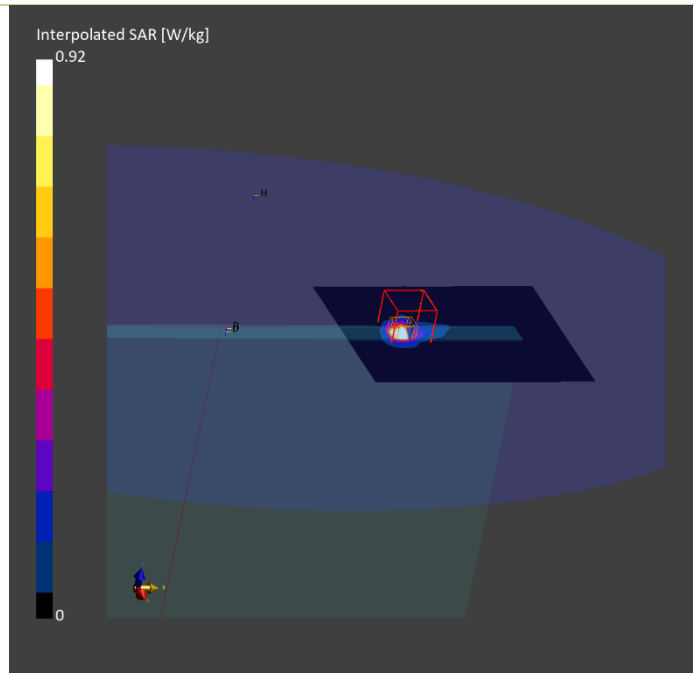
Phantom	TSL, Measured Date	Probe, Calibration Date	DAE, Calibration Date
ELI V8.0 (20deg probe tilt)	HBBL-600-10000, 2024-Feb-08	EX3DV4 - SN7455, 2023-03-16	DAE4ip Sn1658, 2023-09-08

Scan Setup

	Area Scan	Zoom Scan
Grid Extents [mm]	100.0 x 120.0	22.0 x 22.0 x 22.0
Grid Steps [mm]	10.0 x 10.0	3.9 x 3.9 x 1.4
Sensor Surface [mm]	3.0	1.4
Graded Grid	Yes	Yes
Grading Ratio	1.5	1.4
MAIA	Confirmed by MAIA	Confirmed by MAIA
Surface Detection	VMS + 6p	VMS + 6p
Scan Method	Measured	Measured

Measurement Results

	Area Scan	Zoom Scan
Date	2024-02-08, 13:41	2024-02-08, 13:56
psSAR1g [W/kg]	0.755	0.923
psSAR10g [W/kg]	0.172	0.199
Power Drift [dB]	-0.08	-0.08
Power Scaling	Disabled	Disabled
Scaling Factor		
TSL Correction	Positive Only	Positive Only
M2/M1 [%]		62.8
Dist 3dB Peak [mm]		4.6



5. System Check Head Liquid 2450MHz

Device under Test Properties

Model, Manufacturer	Dimensions [mm]	SN	DUT Type
D2450GHzV2 , SPEAG	50.0 x 10.0 x 15.0	937	Validation Dipole

Exposure Conditions

Phantom Section, TSL	Position, Test Distance [mm]	Band	Group, UID	Frequency [MHz], Channel Number	Conversion Factor	TSL Conductivity [S/m]	TSL Permittivity
Flat, HSL	,		, 0--	2450.0, 0	7.28	1.76	40.5

Hardware Setup

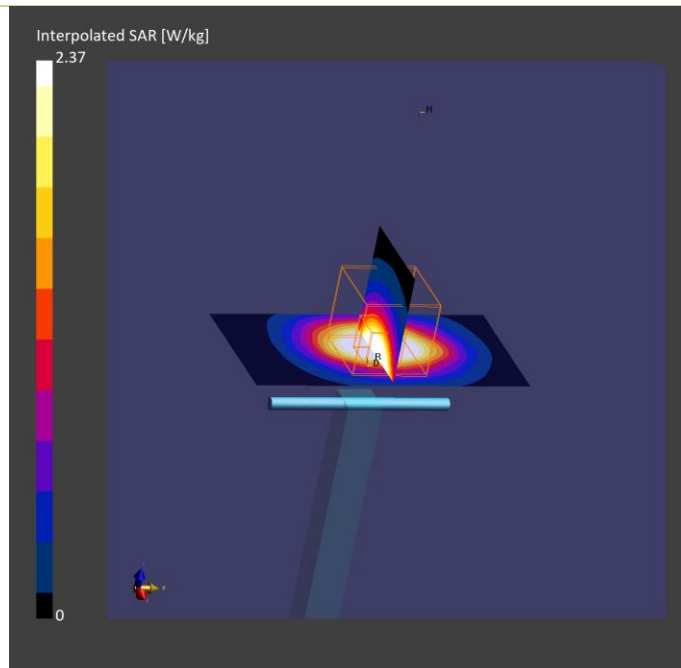
Phantom	TSL, Measured Date	Probe, Calibration Date	DAE, Calibration Date
ELI V8.0 (20deg probe tilt)	HBBL-600-10000 , 2024-Jan-22	EX3DV4 - SN7455, 2023-03-16	DAE4ip Sn1703, 2023-04-18

Scan Setup

	Area Scan	Zoom Scan
Grid Extents [mm]	40.0 x 80.0	30.0 x 30.0 x 30.0
Grid Steps [mm]	10.0 x 10.0	5.0 x 5.0 x 1.5
Sensor Surface [mm]	3.0	1.4
Graded Grid	Yes	Yes
Grading Ratio	1.5	1.5
MAIA	Confirmed by MAIA	Confirmed by MAIA
Surface Detection	VMS + 6p	VMS + 6p
Scan Method	Measured	Measured

Measurement Results

	Area Scan	Zoom Scan
Date	2024-01-23, 15:32	2024-01-23, 15:39
psSAR1g [W/kg]	2.30	2.37
psSAR10g [W/kg]	1.13	1.19
Power Drift [dB]	0.01	-0.01
Power Scaling	Disabled	Disabled
Scaling Factor [dB]		
TSL Correction	Positive Only	Positive Only
M2/M1 [%]		80.6
Dist 3dB Peak [mm]		10.1



6. System Check Head Liquid 5300MHz

Device under Test Properties

Model, Manufacturer	Dimensions [mm]	SN	DUT Type
D5GHzV2 , SPEAG	50.0 x 10.0 x 15.0	1259	Validation Dipole

Exposure Conditions

Phantom Section, TSL	Position, Test Distance [mm]	Band	Group, UID	Frequency [MHz], Channel Number	Conversion Factor	TSL Conductivity [S/m]	TSL Permittivity
Flat, HSL	,		CW, 0--	5300.000, 0	5.19	4.57	37.1

Hardware Setup

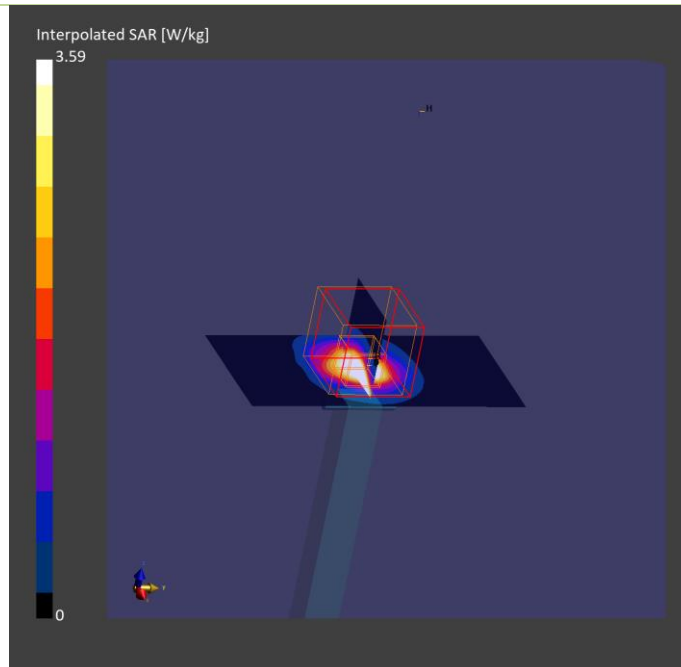
Phantom	TSL, Measured Date	Probe, Calibration Date	DAE, Calibration Date
ELI V8.0 (20deg probe tilt)	HBBL-600-10000, 2024-Feb-08	EX3DV4 - SN7455, 2023-03-16	DAE4ip Sn1658, 2023-09-08

Scan Setup

	Area Scan	Zoom Scan
Grid Extents [mm]	40.0 x 80.0	22.0 x 22.0 x 22.0
Grid Steps [mm]	10.0 x 10.0	4.0 x 4.0 x 1.4
Sensor Surface [mm]	3.0	1.4
Graded Grid	Yes	Yes
Grading Ratio	1.5	1.4
MAIA	Confirmed by MAIA	Confirmed by MAIA
Surface Detection	VMS + 6p	VMS + 6p
Scan Method	Measured	Measured

Measurement Results

	Area Scan	Zoom Scan
Date	2024-02-08, 15:24	2024-02-08, 15:34
psSAR1g [W/kg]	3.25	3.59
psSAR10g [W/kg]	0.953	1.03
Power Drift [dB]	0.03	0.16
Power Scaling	Disabled	Disabled
Scaling Factor [dB]		
TSL Correction	Positive Only	Positive Only
M2/M1 [%]		65.3
Dist 3dB Peak [mm]		7.4



7. System Check Head Liquid 5600MHz

Device under Test Properties

Model, Manufacturer	Dimensions [mm]	SN	DUT Type
D5GHzV2 , SPEAG	50.0 x 10.0 x 15.0	1259	Validation Dipole

Exposure Conditions

Phantom Section, TSL	Position, Test Distance [mm]	Band	Group, UID	Frequency [MHz], Channel Number	Conversion Factor	TSL Conductivity [S/m]	TSL Permittivity
Flat, HSL	,		CW, 0--	5600.0, 0	4.62	4.89	36.5

Hardware Setup

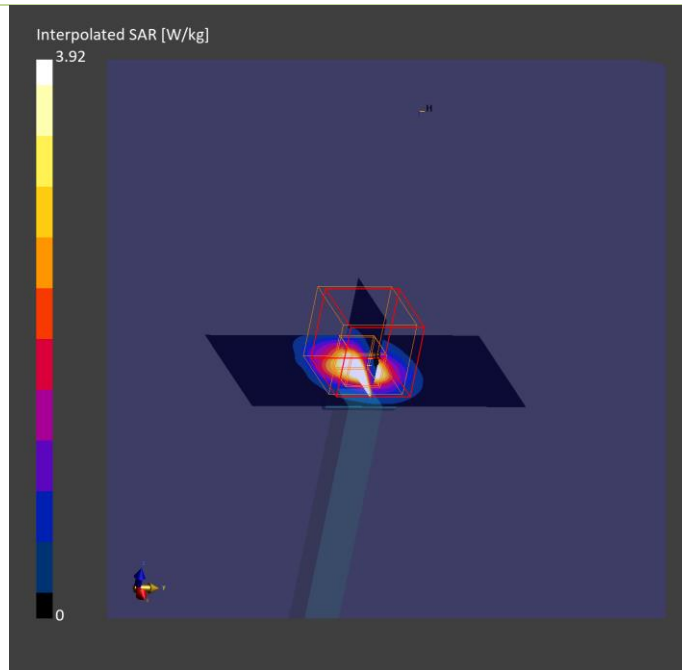
Phantom	TSL, Measured Date	Probe, Calibration Date	DAE, Calibration Date
ELI V8.0 (20deg probe tilt)	HBBL-600-10000, 2024-Feb-08	EX3DV4 - SN7455, 2023-03-16	DAE4ip Sn1658, 2023-09-08

Scan Setup

	Area Scan	Zoom Scan
Grid Extents [mm]	40.0 x 80.0	22.0 x 22.0 x 22.0
Grid Steps [mm]	10.0 x 10.0	4.0 x 4.0 x 1.4
Sensor Surface [mm]	3.0	1.4
Graded Grid	Yes	Yes
Grading Ratio	1.5	1.4
MAIA	Confirmed by MAIA	Confirmed by MAIA
Surface Detection	VMS + 6p	VMS + 6p
Scan Method	Measured	Measured

Measurement Results

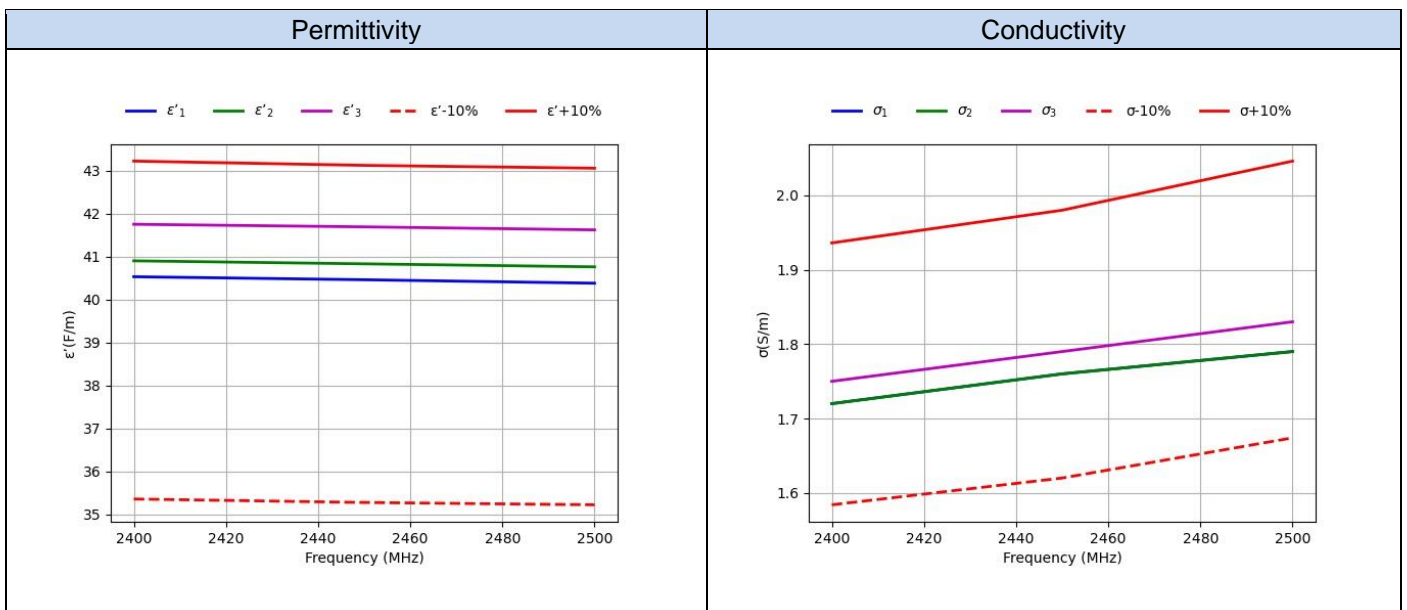
	Area Scan	Zoom Scan
Date	2024-02-08, 14:43	2024-02-08, 14:53
psSAR1g [W/kg]	3.55	3.92
psSAR10g [W/kg]	1.03	1.11
Power Drift [dB]	0.20	0.21
Power Scaling	Disabled	Disabled
Scaling Factor [dB]		
TSL Correction	Positive Only	Positive Only
M2/M1 [%]		62.8
Dist 3dB Peak [mm]		7.4



Annex D. TSL Dielectric Parameters

Head DTS 2450MHz

Freq.(MHz)	Target		Measured 2024-01-22		Measured 2024-02-05		Measured 2024-02-08	
	ϵ' (F/m)	σ (S/m)	$\epsilon'1$ (F/m)	$\sigma1$ (S/m)	$\epsilon'2$ (F/m)	$\sigma2$ (S/m)	$\epsilon'3$ (F/m)	$\sigma3$ (S/m)
2400	39.29	1.76	40.53	1.72	40.90	1.72	41.75	1.75
2450	39.20	1.80	40.46	1.76	40.83	1.76	41.69	1.79
2500	39.14	1.86	40.38	1.79	40.76	1.79	41.62	1.83



D.1 Head 5200MHz-5800MHz

Freq.(MHz)	Target		Measured 2024-01-22		Measured 2024-02-05		Measured 2024-02-08	
	ϵ' (F/m)	σ (S/m)	$\epsilon'1$ (F/m)	$\sigma1$ (S/m)	$\epsilon'2$ (F/m)	$\sigma2$ (S/m)	$\epsilon'3$ (F/m)	$\sigma3$ (S/m)
5100	36.10	4.55	36.20	4.20	36.75	4.20	37.36	4.30
5150	36.04	4.60	36.14	4.26	36.67	4.26	37.30	4.36
5200	35.99	4.66	36.07	4.33	36.60	4.33	37.22	4.43
5250	35.93	4.71	36.00	4.40	36.52	4.40	37.14	4.50
5300	35.87	4.76	35.94	4.47	36.44	4.47	37.07	4.57
5350	35.81	4.81	35.89	4.53	36.37	4.53	37.00	4.63
5400	35.76	4.86	35.82	4.59	36.29	4.58	36.93	4.69
5450	35.70	4.91	35.75	4.64	36.21	4.64	36.84	4.74
5500	35.64	4.96	35.66	4.70	36.11	4.69	36.74	4.79
5550	35.59	5.01	35.54	4.75	36.00	4.74	36.63	4.84
5600	35.53	5.07	35.44	4.79	35.90	4.79	36.53	4.89
5650	35.47	5.12	35.35	4.84	35.81	4.83	36.44	4.94
5700	35.41	5.17	35.28	4.89	35.73	4.88	36.36	4.98
5750	35.36	5.22	35.20	4.93	35.66	4.92	36.28	5.03
5800	35.30	5.27	35.11	4.97	35.58	4.96	36.20	5.07
5850	35.24	5.32	35.03	5.01	35.52	5.00	36.12	5.11
5900	35.19	5.37	34.94	5.06	35.44	5.05	36.04	5.16

