

ANTENNA INFORMATION

OEM	DELL
ODM	Compal Electronics, Inc.
Platform model name	P30T
Intel platform (ex: Yes, No or NA)	Yes
Platform type (ex: regular NB, convertible PC, AIO...etc)	Convertible PC
SAR minimum separation (mm)	202.97 (Clamshell mode)

Antenna manufacturer	Hong Bo Co., Ltd.		
Address	4F., No.143, Sinhu 1st Rd., Neihu Dist., Taipei City, 11494 Taiwan		
Antenna Part number	Main: Compal PN DC33002L50L HB PN 260-24378	Aux: Compal PN DC33002L50L HB PN 260-24378	
Antenna type (ex: PIFA, Dipole...etc)	PIFA		

Antenna Peak gain w/ cable loss (dBi)*										
	2.4GHz 2400-2483.5 MHz	5.2GHz 5150-5250MHz	5.3GHz 5250-5350MHz	5.6GHz 5470-5725MHz	5.8GHz 5725-5850MHz	5.9GHz 5850-5895MHz	6.2GHz 5925-6425MHz	6.5GHz 6425-6525MHz	6.7GHz 6525-6875MHz	7.0 GHz 6875-7125MHz
Main	1.56	2.89	2.89	3.39	2.97	2.97	NA	NA	NA	NA
Aux	2.80	2.02	2.55	3.24	3.19	3.87	NA	NA	NA	NA

Cable Assembly Part Number and Information					
	Cable PN	Cable length(cm)	Cable diameter(mm)	Impedance(ohm)	Connector type
Main	White 1.13 LLS	37.9	1.13	50	I-PEX MHF4L
Aux	Black 1.13 LLS	59.9	1.13	50	I-PEX MHF4L

* 3D Antenna Peak Gain required being test in system basis.

Table of Contents

Cover page	1
Annex A. Photographs	
A.1 Setup Photo.....	3
A.2 Test sample.....	4
Annex B. Antenna Location	
B.1 Antenna Host Platform Location Information.....	7
B.2 Antenna dimensional information for SAR evaluation.....	9

Annex A. Photographs

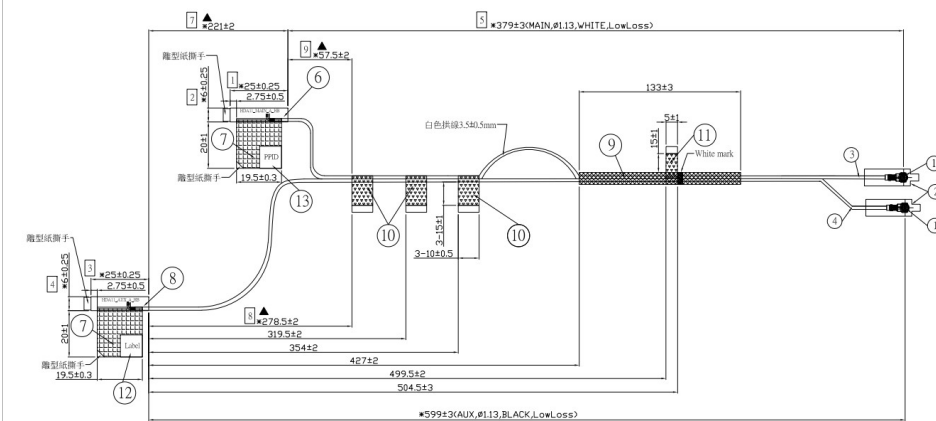
A.1 Setup Photo



A.2 Test sample

Main Antenna

Antenna Drawing

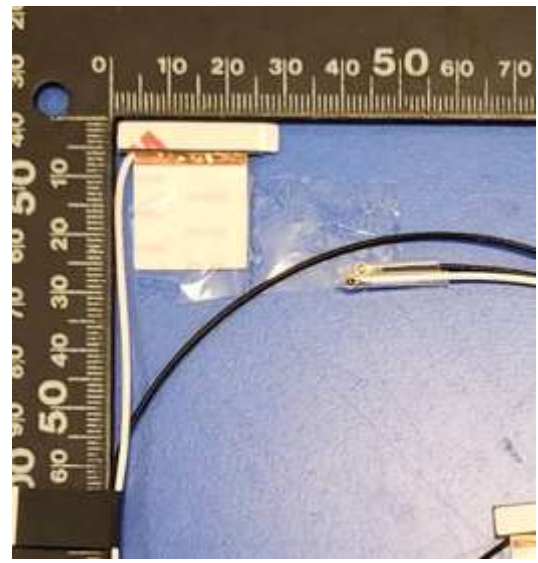


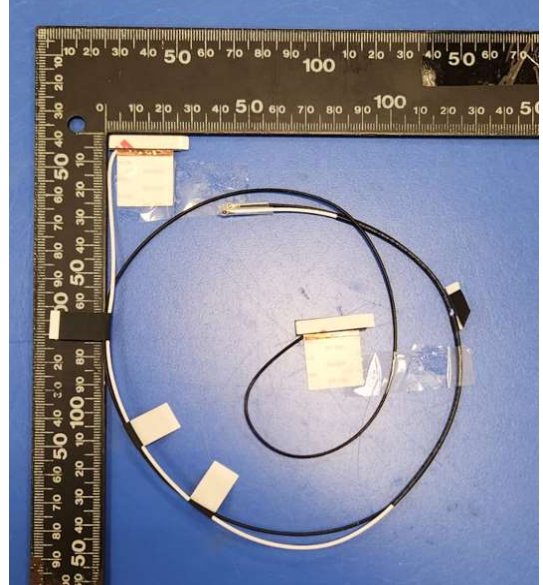
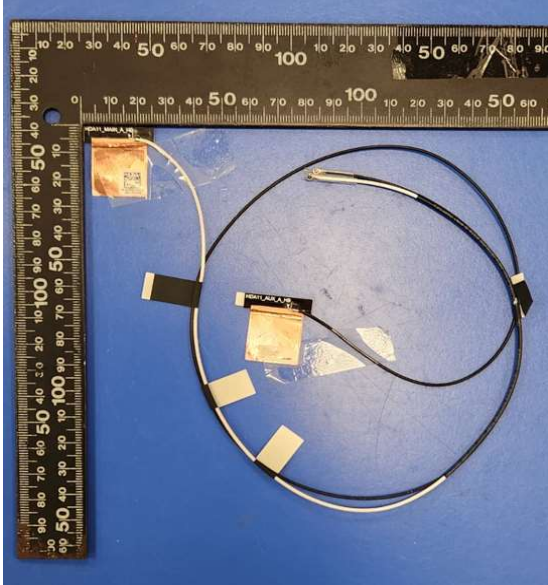
Antenna Photo

Front



Back

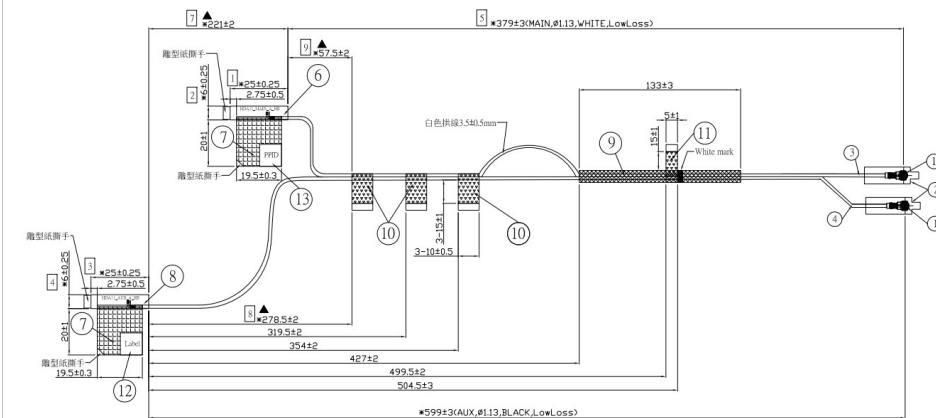




Note: antenna photo should include L type ruler

Aux Antenna

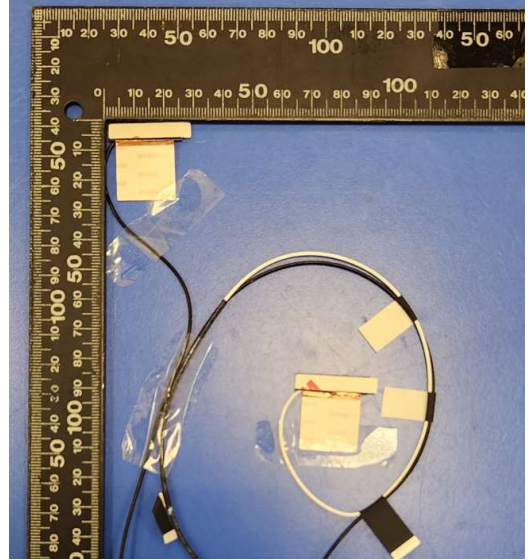
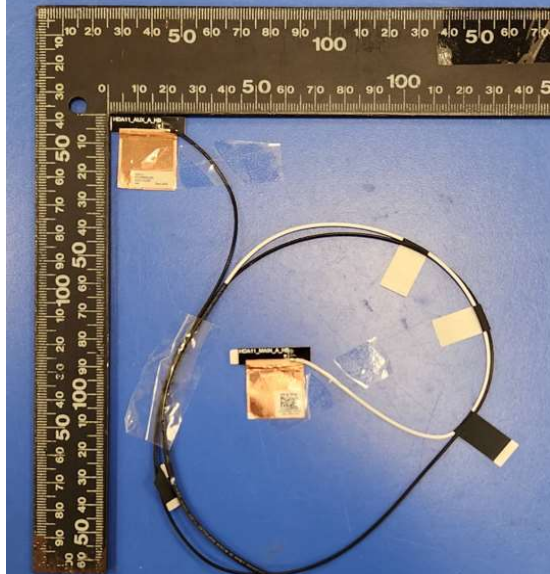
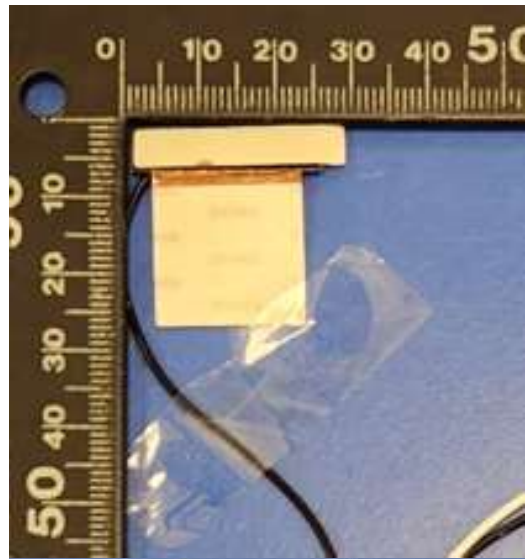
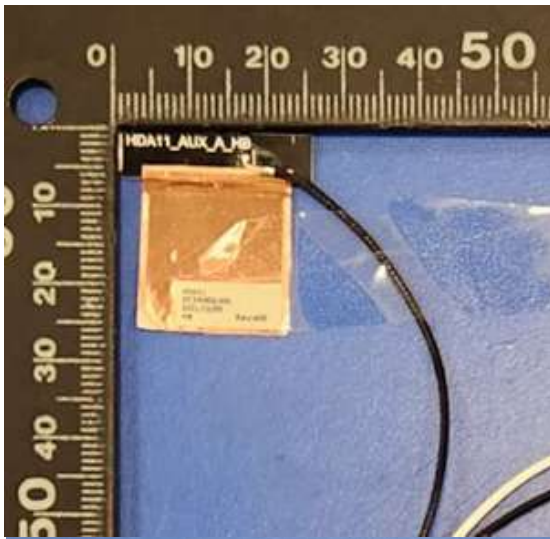
Antenna Drawing



Antenna Photo

Front

Back



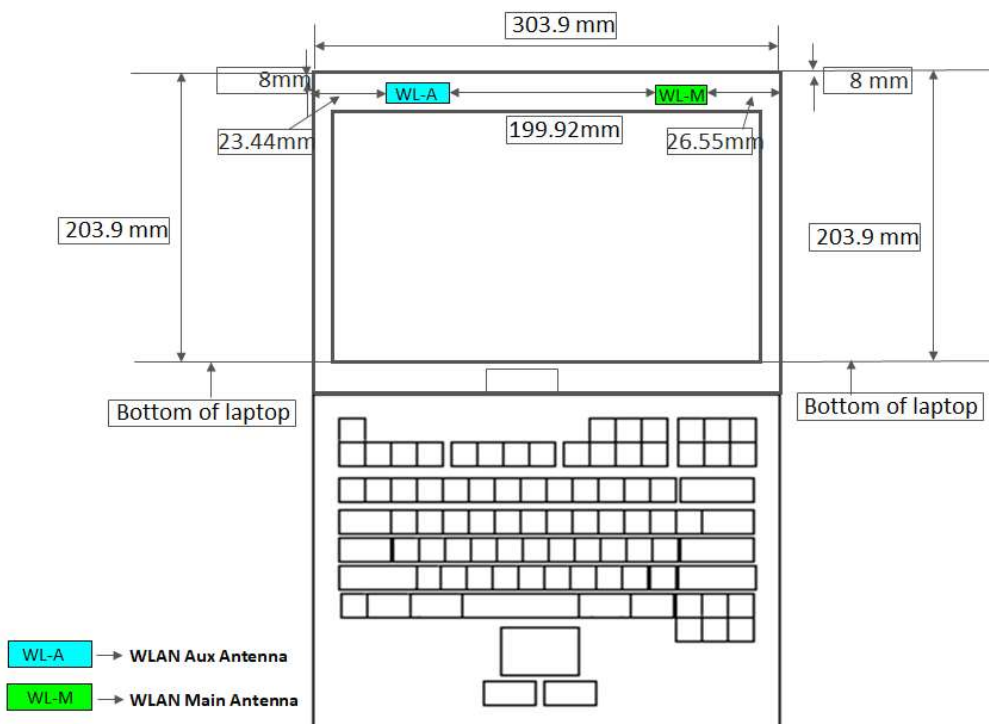
Note: antenna photo should include L type ruler

Annex B. Antenna Location

B.1 Antenna Host Platform Location Information

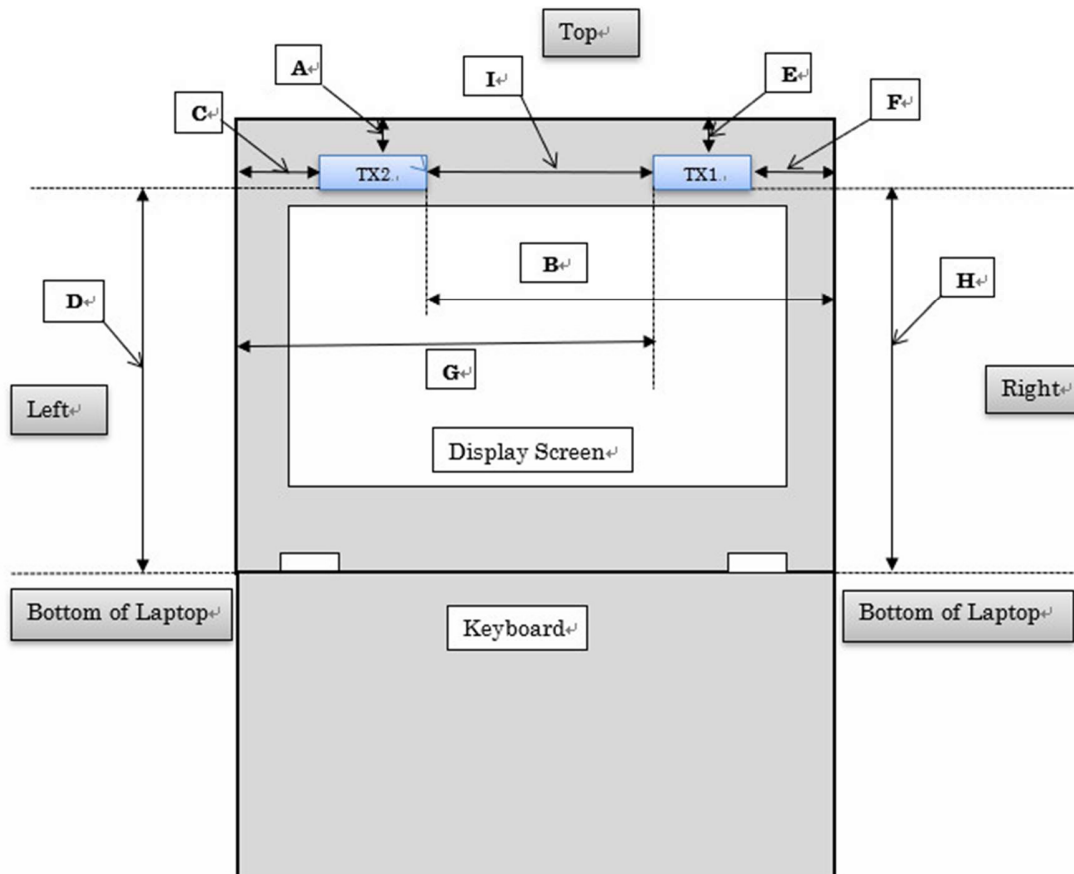
Include a dimensioned photo(s) or dimensioned drawing(s) of Main and Aux antenna placements (measurements are not required for receive-only antenna).

Any antenna that transmits must show dimensions to bottom of laptop. Provide a description of the materials that are used for supporting or surrounding transmit antennas; for example, non-conductive plastics vs. conductive coated plastic or metallic materials.



Notebook Mode

Minimum Separation Distance			
Item	Antenna	Position	Distance (mm)
A	WLAN-AUX	to Top	8
B	WLAN-AUX	to Right	251.47
C	WLAN-AUX	to Left	23.44
D	WLAN-AUX	to Bottom of Laptop (NOT include Bumper)	203.9
E	WLAN-MAIN	to Top	8
F	WLAN-MAIN	to Right	26.55
G	WLAN-MAIN	to Left	248.36
H	WLAN-MAIN	to Bottom of Laptop (NOT include Bumper)	203.9
I	WLAN-MAIN	to WLAN Aux	199.92



B.2 Antenna dimensional information for SAR evaluation

Include a dimensioned photo(s) or dimensioned drawing(s) showing the distance (mm) between the transmit antennas and the user. For notebook/laptop hosts show lapheld position (example below). For tablet hosts show all orientations including lapheld, primary & secondary portrait, primary & secondary landscape positions. Include a description of any proximity sensors or power throttling implementations that limit or exclude use of any host orientation.

