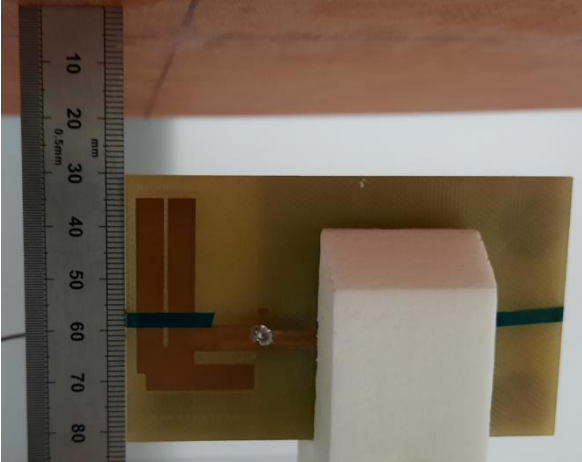
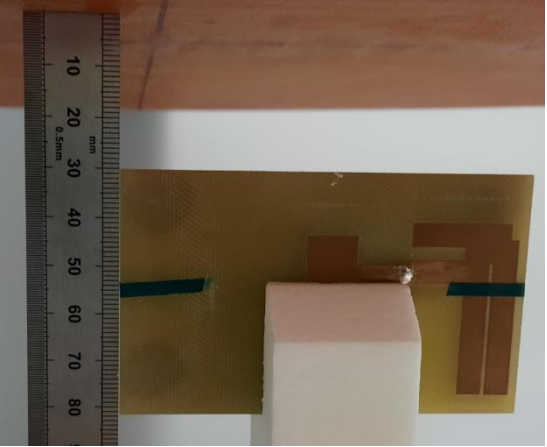
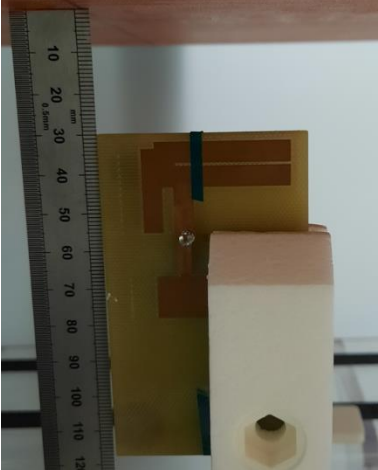
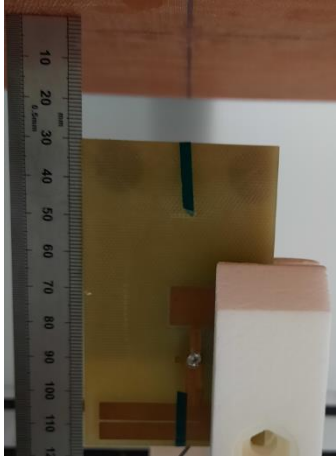
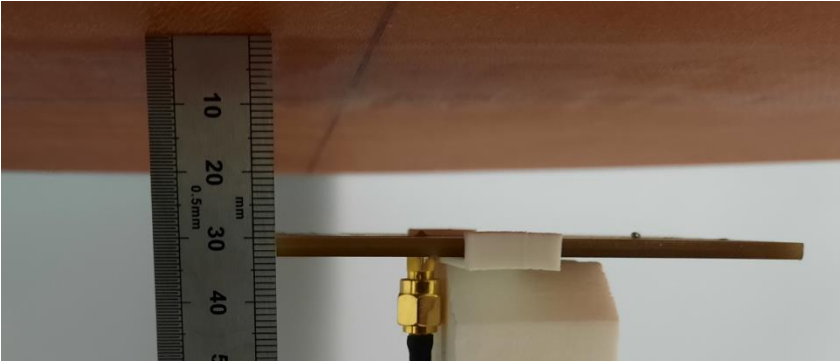


Annex F. Photographs


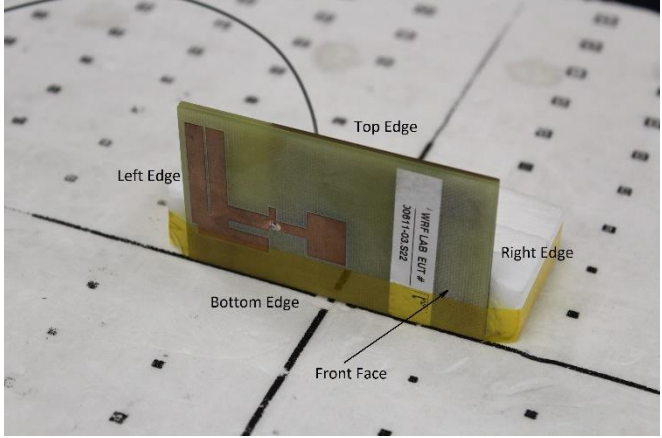
F.1 Test Sample

<p>D2W Module : (Front) 200928-02.S05</p>  <p>A photograph showing the front view of a D2W module. The module is a small, rectangular component with a gold-colored surface. It is placed on a black background with a white ruler for scale. The ruler shows markings from 0 to 30. The module has the Intel logo and the part number '200928-02.S05' printed on it.</p>	<p>D2W Module : (Back) 200928-02.S05</p>  <p>A photograph showing the back view of a D2W module. The module is a small, rectangular component with a gold-colored surface. It is placed on a black background with a white ruler for scale. The ruler shows markings from 0 to 30. The module has a grid of gold pins on its back.</p>
<p>Platform Extender: 170509-02.S01</p>  <p>A photograph showing a Platform Extender board. The board is green and populated with various electronic components, including capacitors, resistors, and integrated circuits. It is placed on a black background with a white ruler for scale. The ruler shows markings from 0 to 100. The board has the Intel logo and the part number '170509-02.S01' printed on it.</p>	<p>Laptop PC : 170000-01.S18</p>  <p>A photograph showing a black laptop PC. The laptop is open and viewed from a slightly elevated angle. The screen is black, and the keyboard is visible. The Intel logo is visible on the bottom right of the laptop's bezel.</p>
<p>Socket : 180000-01.S02</p>  <p>A photograph showing a Socket component. The component is a brown, rectangular board with two black, rectangular components mounted on it. It is placed on a black background with a white ruler for scale. The ruler shows markings from 0 to 40. The component has the Intel logo and the part number '180000-01.S02' printed on it.</p>	

F.2 Test positions

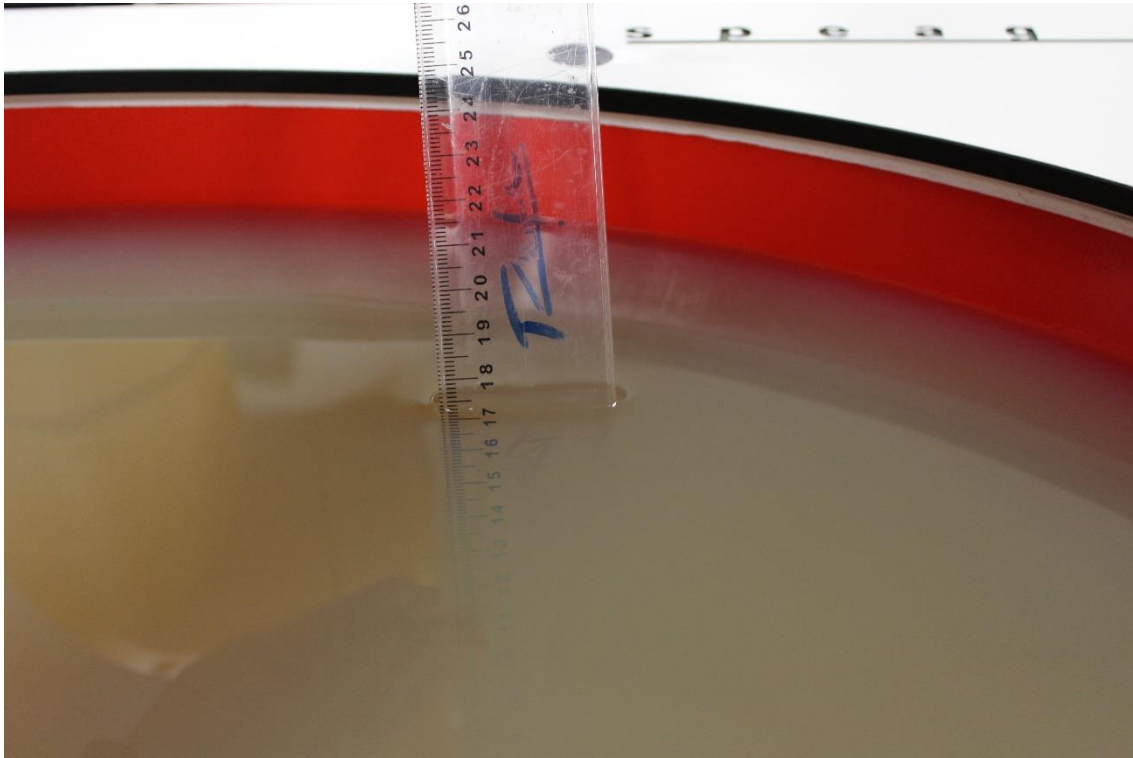
<p>Top Edge: 30mm</p>	<p>Bottom Edge: 30mm</p>
	
<p>Left Edge: 30mm</p>	<p>Right Edge: 30mm</p>
	
<p>Front Face 30mm</p>	
	

F.3 Antenna host platform location and adjacent edge positions relative to the body

Antenna Front View	Antenna Positions
	

F.4 Phantom liquid level during measurements

ELI phantom Body liquid SAR Dasy SPEAG MBL600-6000V6 Batch -180206-04



End of the report

This page is intentionally left blank and marks the last page of the test report.