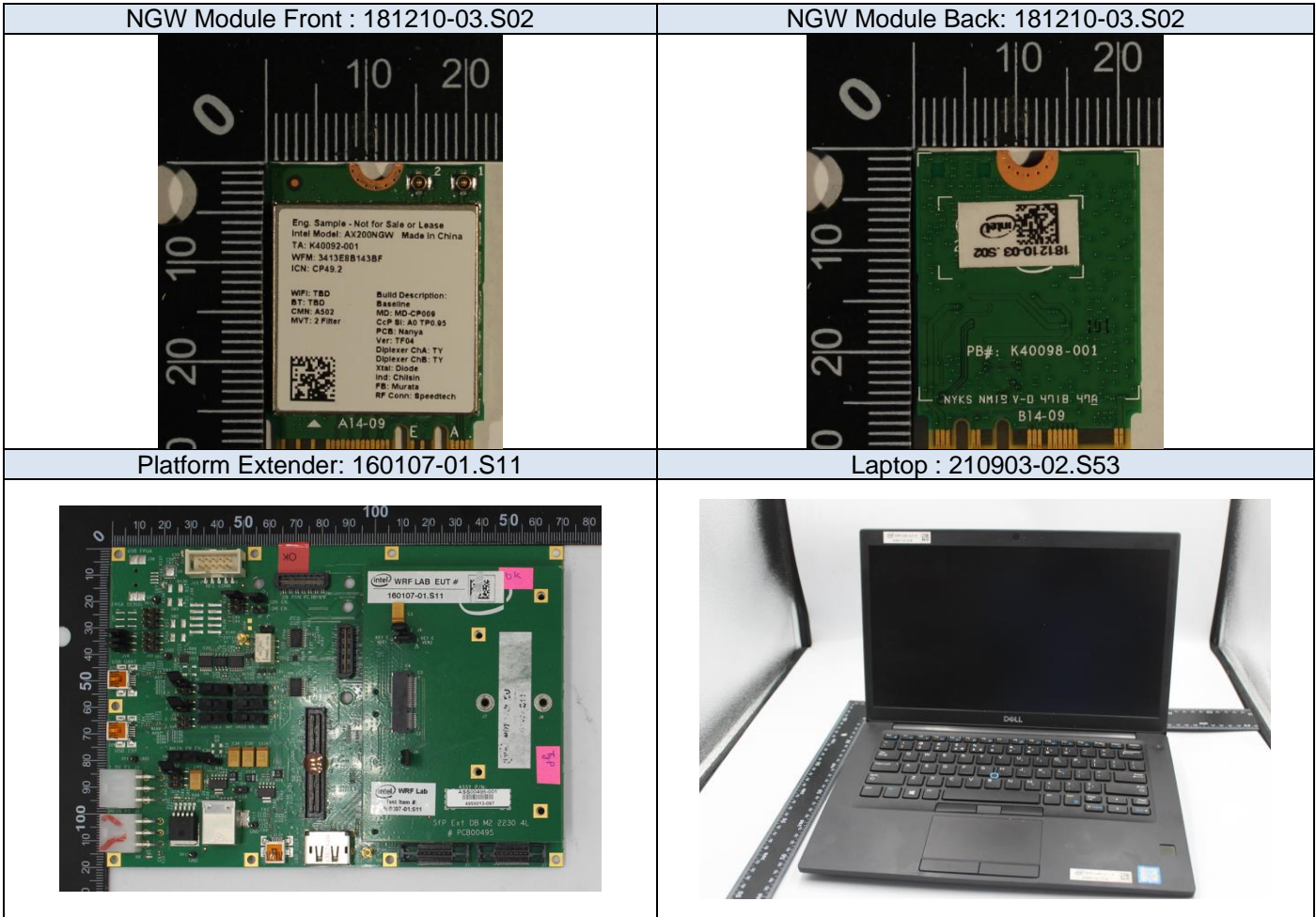


Annex F. Photographs


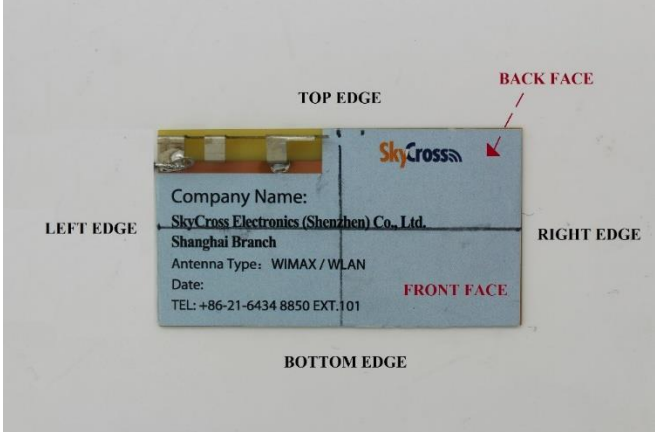
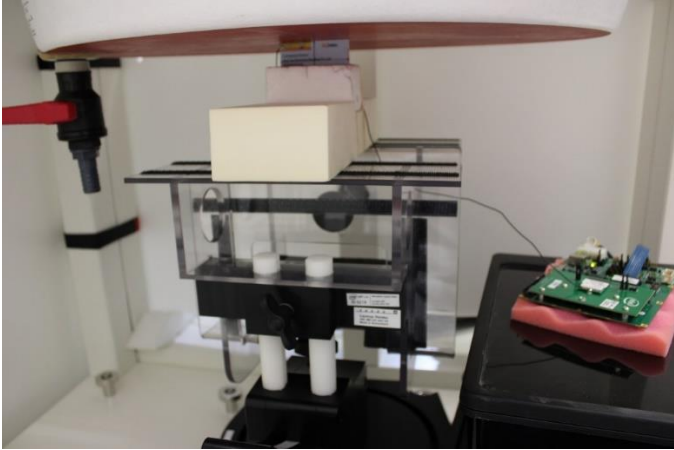
F.1 Test Sample



F.2 Test positions

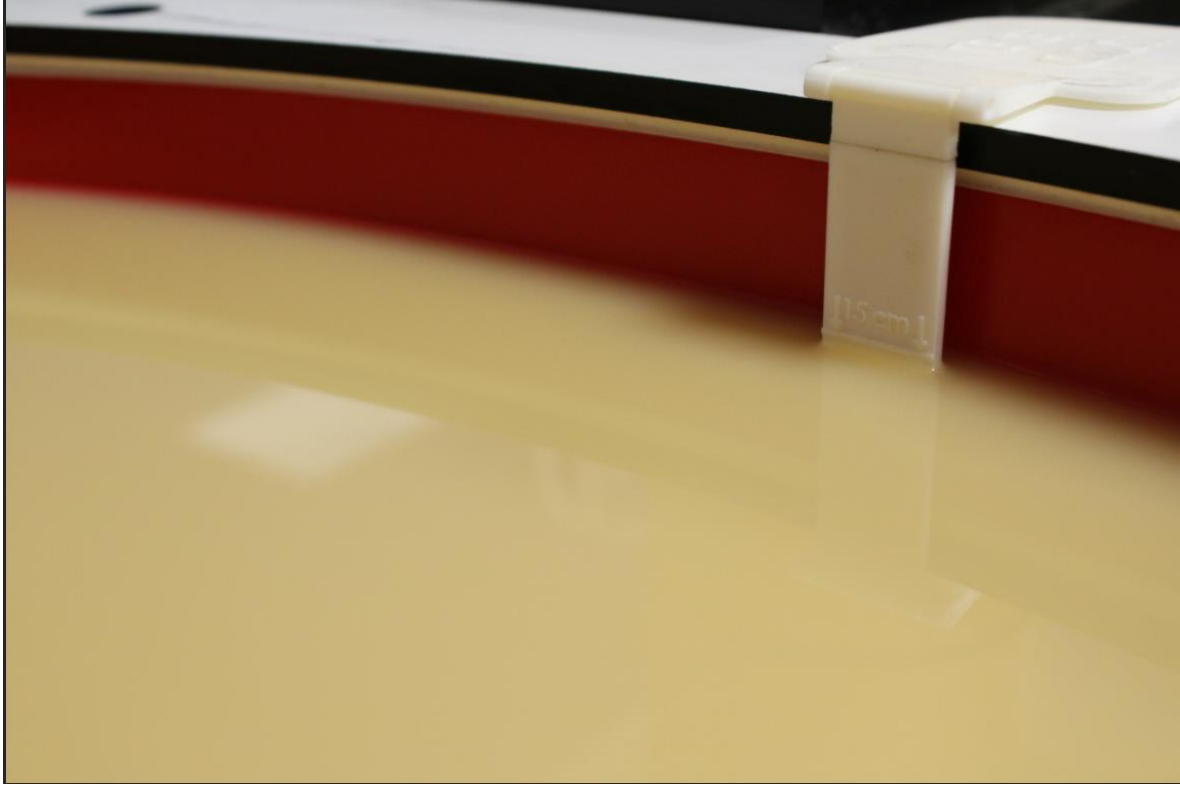
Top Edge 8mm	Bottom Edge 8mm
Left Edge 8mm	Right Edge 8mm
Front Face 8mm	Back Face 8mm

F.3 Antenna host platform location and adjacent edge positions relative to the body

Antenna Front View	Antenna Positions
 <p>A photograph showing the front view of an antenna host platform. A black ruler with white markings in centimeters is placed above the antenna. The antenna is a rectangular white PCB with a yellow soldered component on the left side. A label on the antenna reads: "Company Name: SkyCross Electronics (Shenzhen) Co., Ltd. Shanghai Branch. Antenna Type: WIMAX / WLAN. Date: TEL: +86-21-6434 8850 EXT.101". The SkyCross logo is visible on the right side of the antenna.</p>	 <p>A diagram of the antenna host platform with labels for its edges and faces. The edges are labeled: "TOP EDGE" at the top, "BOTTOM EDGE" at the bottom, "LEFT EDGE" on the left, and "RIGHT EDGE" on the right. The faces are labeled: "FRONT FACE" in red text on the right side and "BACK FACE" in red text with a red arrow pointing to the top-right corner.</p>
General Setup	
 <p>A photograph of the general test setup. It shows a laboratory environment with a black table. On the table, there is a green PCB with various components, a red object, and a black device. In the background, there is a black metal frame structure with a yellow box on top, and a red object hanging from the ceiling.</p>	

F.4 Phantom liquid level during measurements

ELI phantom Body liquid SAR Dasy SPEAG MBBL600-6000V6 Batch -160630-01



End of the report

This page is intentionally left blank and marks the last page of the test report.