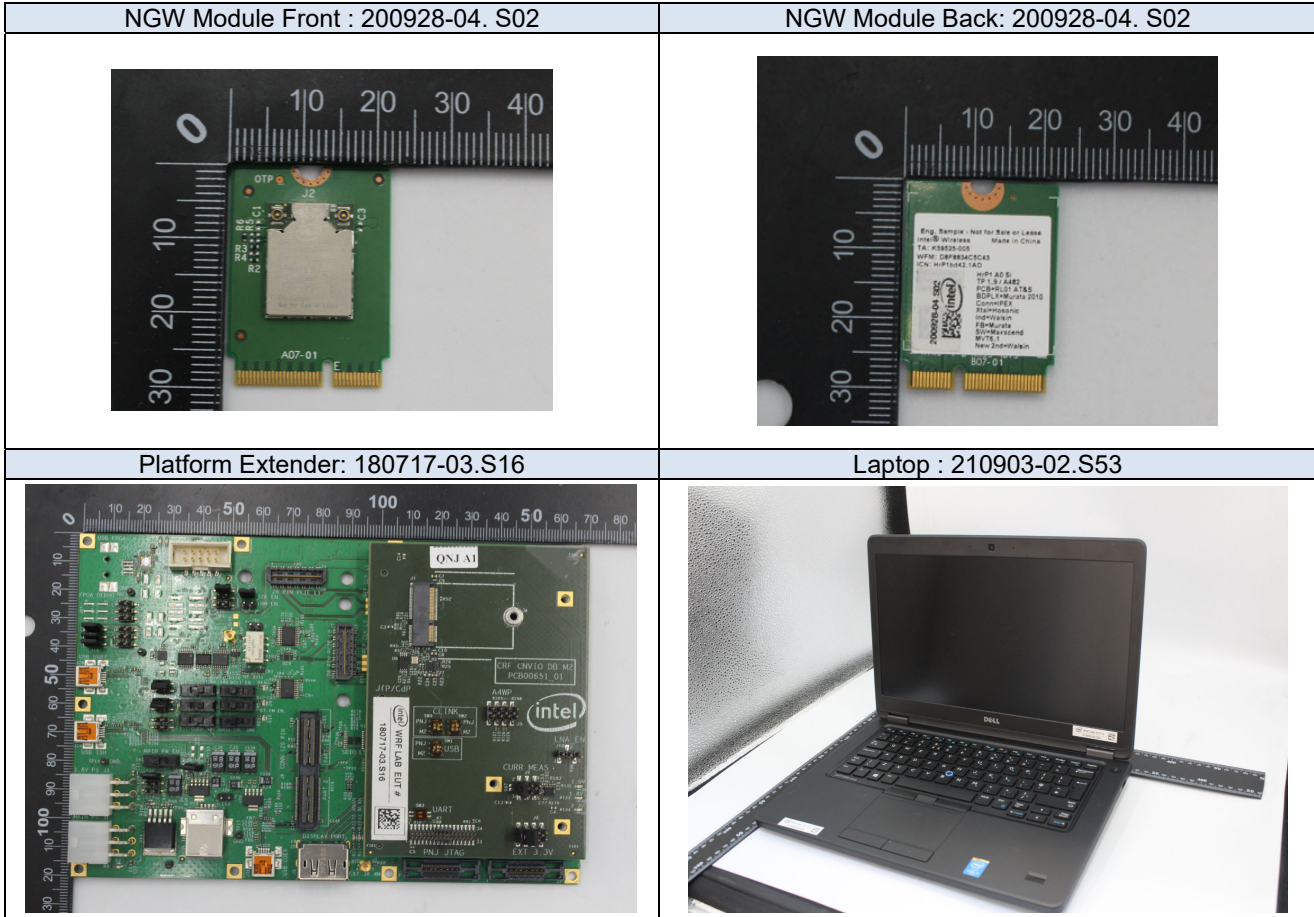


Annex F. Photographs


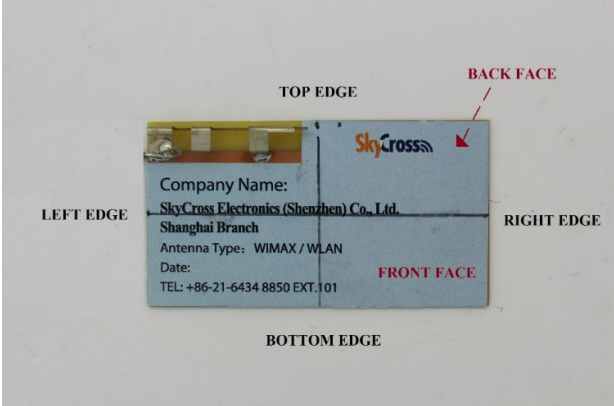
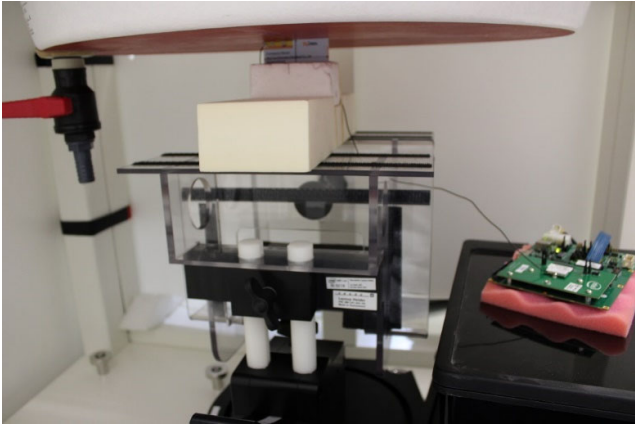
F.1 Test Sample



F.2 Test positions

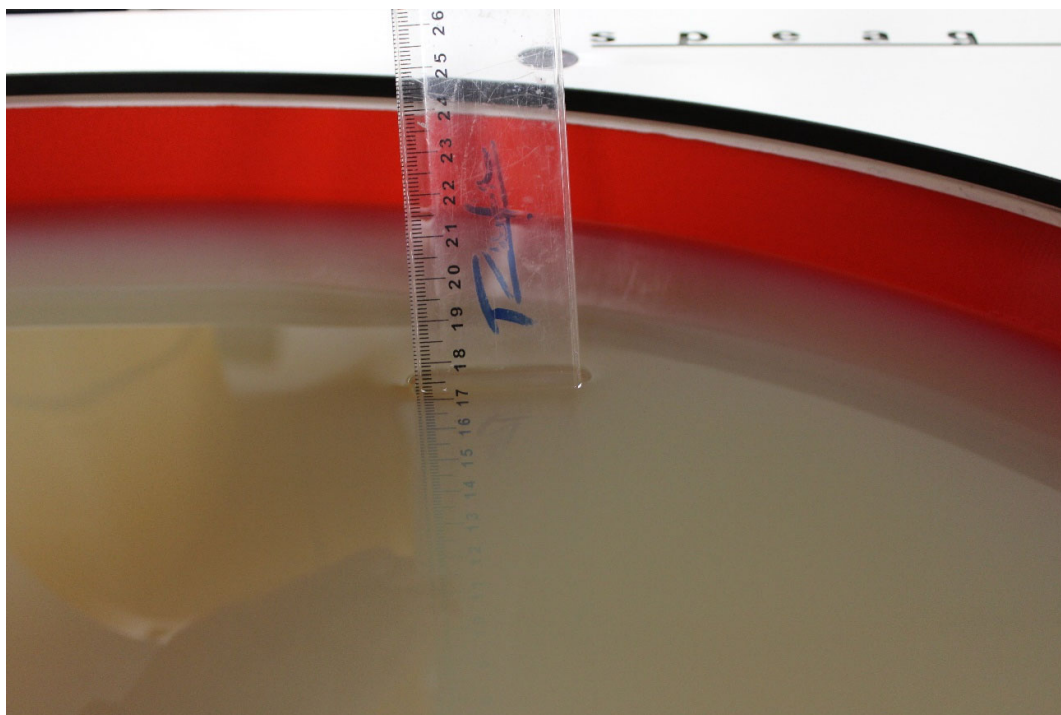
Top Edge 5mm	Bottom Edge 5mm
Left Edge 5mm	Right Edge 5mm
Front Face 5mm	Back Face 5mm

F.3 Antenna host platform location and adjacent edge positions relative to the body

Antenna Front View	Antenna Positions
 <p>The image shows the front view of the antenna host platform. A ruler is placed above it for scale. The label on the antenna contains the following information:</p> <ul style="list-style-type: none">Company Name: SkyCross Electronics (Shenzhen) Co., Ltd. Shanghai BranchAntenna Type: WIMAX / WLANDate:TEL: +86-21-6434 8850 EXT.101	 <p>The diagram shows the antenna host platform with its four edges labeled: TOP EDGE, BOTTOM EDGE, LEFT EDGE, and RIGHT EDGE. The front face and back face are also indicated with red arrows.</p> <p>Company Name: SkyCross Electronics (Shenzhen) Co., Ltd. Shanghai Branch Antenna Type: WIMAX / WLAN Date: TEL: +86-21-6434 8850 EXT.101</p>
General Setup	
 <p>The photograph shows the general setup for the antenna testing. A yellow antenna host platform is mounted on a metal stand. A green printed circuit board (PCB) is placed on a red surface next to the stand. The setup is located in a laboratory environment.</p>	

F.4 Phantom liquid level during measurements

ELI phantom Body liquid SAR Dasy SPEAG MBBL600-6000V6 Batch -1-180206-04



End of the report

This page is intentionally left blank and marks the last page of the test report.