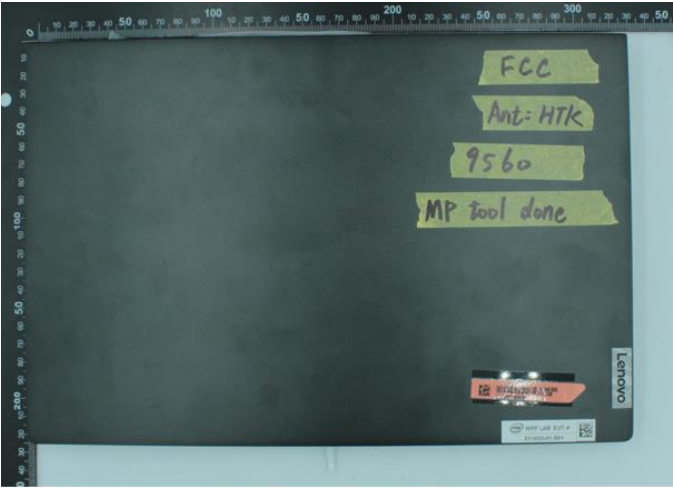


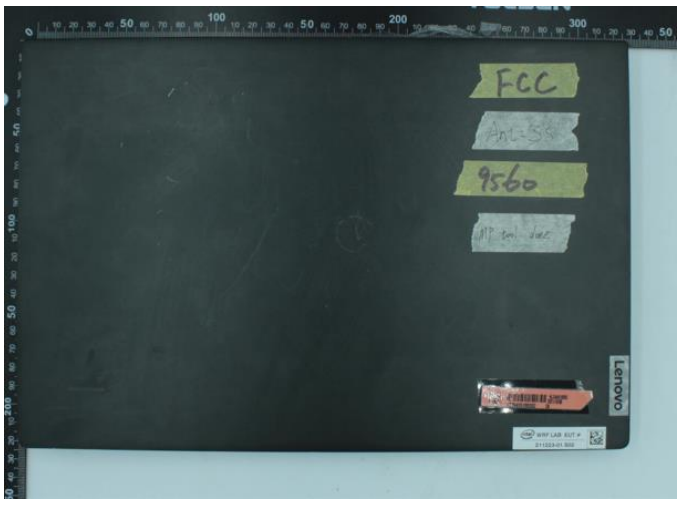




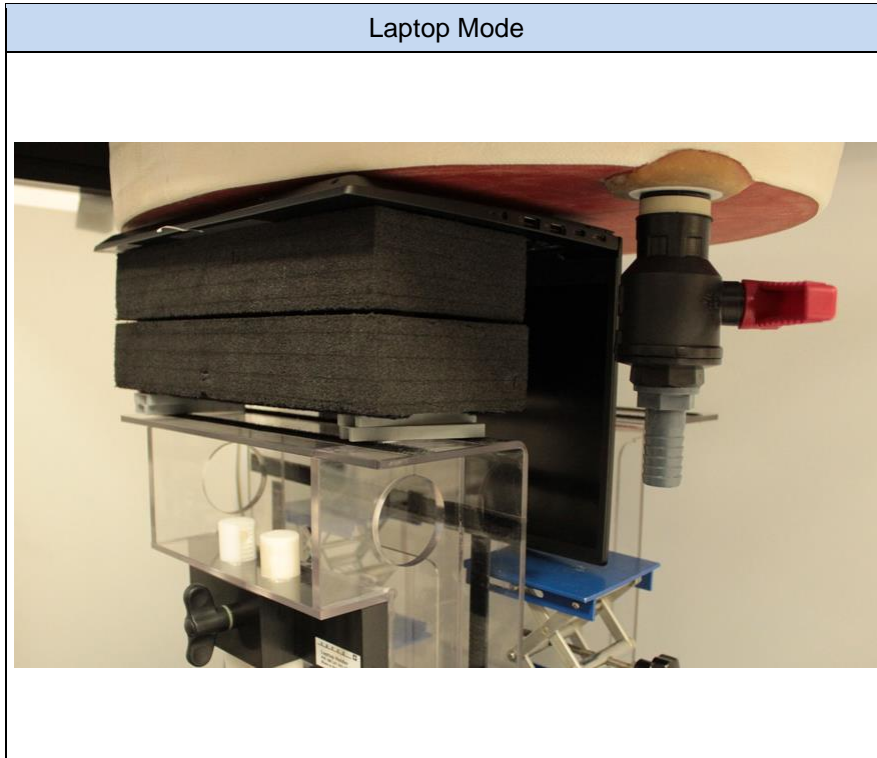
# Annex F. Photographs

## F.1 Test Sample

Sample Front – 211223-01.S01	Sample Back – 211223-01.S01
	
Laptop Mode – 211223-01.S01	
	

Sample Front – 211223-01.S02	Sample Back – 211223-01.S02
 <p>A photograph showing the front view of a closed laptop lid. A ruler is placed horizontally above the lid for scale. Several identification stickers are attached to the lid: a yellow sticker with 'FCC', a white sticker with '211223-01', a yellow sticker with '9560', and a white sticker with 'HP Inc. Inc.'. A red 'Lenovo' logo sticker is visible in the bottom right corner. A small white sticker with 'HP LAB TEST #' and '211223-01' is also present.</p>	 <p>A photograph showing the back view of the laptop lid. A ruler is placed horizontally above the lid for scale. A small white sticker with 'HP LAB TEST #' and '211223-01' is located near the bottom center. The back of the lid features a large ventilation grille.</p>
Laptop Mode – 211223-01.S02	
 <p>A photograph showing the laptop in its open mode. The laptop is positioned on a light-colored surface. A ruler is placed horizontally to the left of the laptop for scale. The laptop is black with a silver hinge. The keyboard and touchpad are visible.</p>	

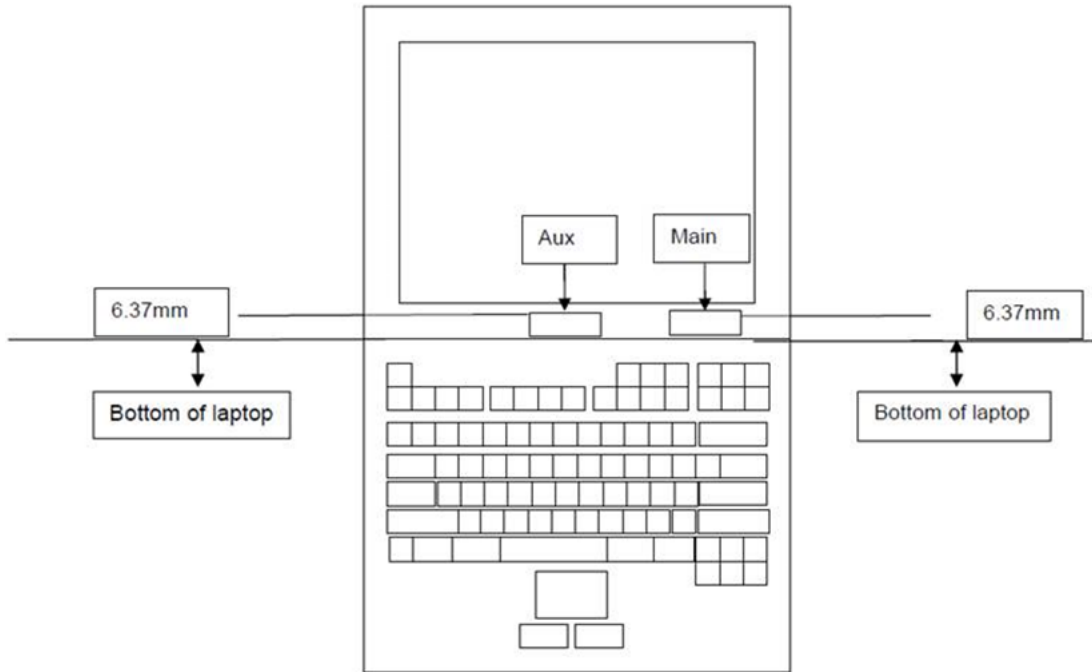
## F.2 Test positions



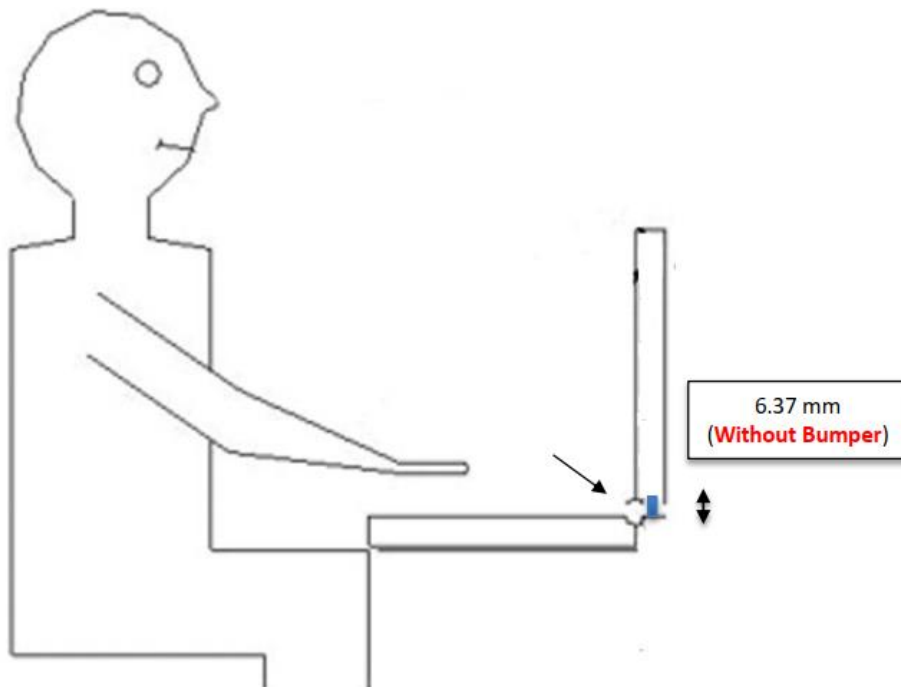
### F.3 Antenna host platform location and adjacent edge positions relative to the body

#### Information provided by the customer

#### Antenna Host Platform location and co-location separation

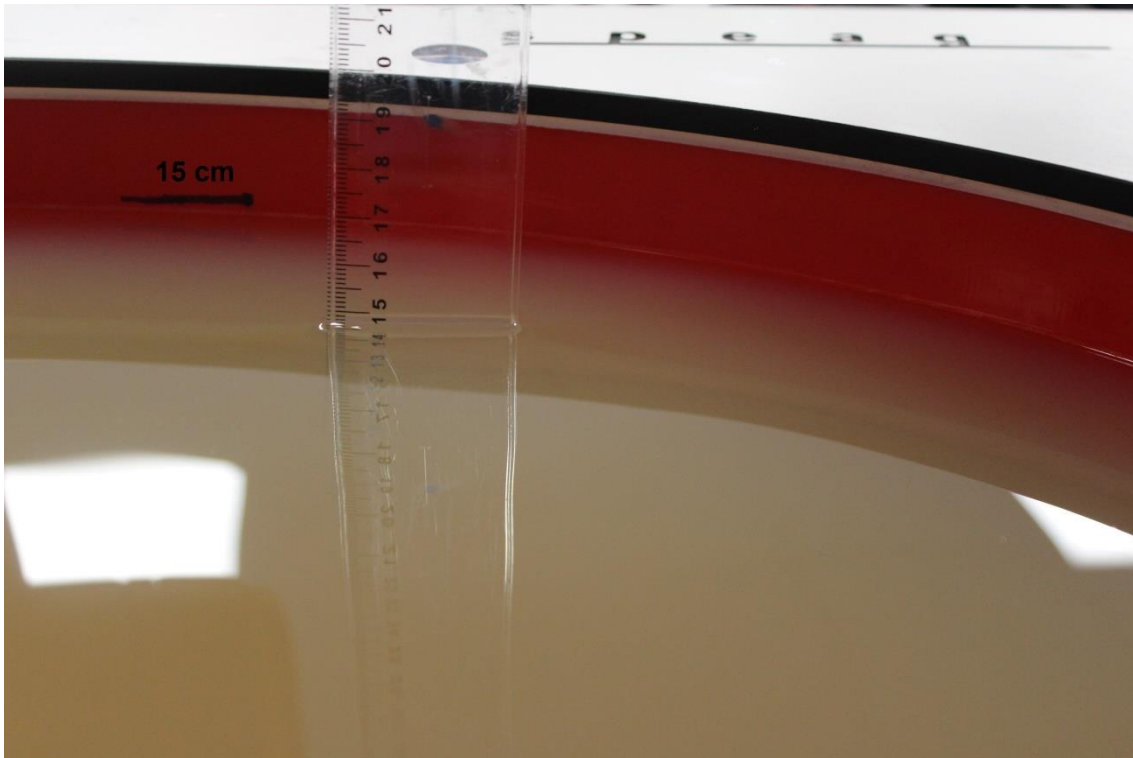


#### Laptop Mode



### F.4 Phantom liquid level during measurements

ELI phantom Body liquid SAR Dasy SPEAG MBBL600-6000V6 Batch -180206-4



## **End of the report**

**This page is intentionally left blank and marks the last page of the test report.**