




# TEST REPORT

<p><b>KCTL Inc.</b>                  65, Sinwon-ro, Yeongtong-gu,                  Suwon-si, Gyeonggi-do, 16677, Korea                  TEL: 82-31-285-0894 FAX: 82-505-299-8311  <a href="http://www.kctl.co.kr">www.kctl.co.kr</a></p>	<p>Report No.:                  KR19-SPF0001                  Page (1) of (115)</p>	
--	---	---

**1. Client**

- Name : Intel Mobile Communications
- Address : 100 Center Point Circle, Suite 200 Columbia, South Carolina 29210 USA
- Date of Receipt : 2018-12-18

**2. Use of Report** : -

**3. Product Name** : Intel® Dual Band Wireless-AC 8260

- Model Number : 8260D2W
- Manufacturer and Country of Origin: Intel Mobile Communications / USA

**4. Host Product Name** : Notebook PC



- Host Model Number : NP370E5A
- Manufacturer : Samsung Electronics Co., Ltd.

**5. FCC ID** : PD98260D2

**6. Date of Test** : 2018-12-26 to 2018-12-27

**7. Test Standards** : IEEE 1528-2013, ANSI/IEEE C95.1, KDB Publication

**8. Test Results** : Refer to the test result in the test report

Affirmation	Tested by 	Technical Manager 
	Name : Dongkyu Kim (Signature)	Name : Cheonsig Choi (Signature)

2019-01-04

**KCTL Inc.**

As a test result of the sample which was submitted from the client, this report does not guarantee the whole product quality. This test report should not be used and copied without a written agreement by KCTL Inc.

**KCTL Inc.**

65, Sinwon-ro, Yeongtong-gu,  
Suwon-si, Gyeonggi-do, 16677, Korea  
TEL: 82-31-285-0894 FAX: 82-505-299-8311  
[www.kctl.co.kr](http://www.kctl.co.kr)

Report No.:  
KR19-SPF0001  
Page (2) of (115)

**Report revision history**

Date	Revision	Page No
2019-01-04	Initial report	-

*This report shall not be reproduced except in full, without the written approval of KCTL Inc. This document may be altered or revised by KCTL Inc. personnel only, and shall be noted in the revision section of the document. Any alteration of this document not carried out by KCTL Inc. will constitute fraud and shall nullify the document.*

This test report is a general report that does not use the KOLAS accreditation mark and is not related to KOLAS accreditation.



## CONTENTS

1.	General information.....	4
2.	Device information.....	5
3.	Summary of tests.....	8
4.	Report Overview.....	9
5.	Test Lab Declaration or Comments.....	9
6.	Applicant Declaration or Comments.....	9
7.	The SAR Measurement System.....	10
8.	System Verification.....	14
9.	Operation Configurations.....	17
10.	SAR Measurement Procedures.....	18
11.	Test Equipment Information.....	20
12.	RF Average Conducted Output Power.....	21
13.	SAR Test Exclusions Applied.....	28
14.	SAR Test Results.....	29
15.	Test System Verification Results.....	34
16.	Test Results.....	38
	Appendix A. Calibration certificate.....	46
	Appendix B. EUT Photo.....	109
	Appendix C. Test Photo.....	113

## KCTL Inc.

65, Sinwon-ro, Yeongtong-gu,  
Suwon-si, Gyeonggi-do, 16677, Korea  
TEL: 82-31-285-0894 FAX: 82-505-299-8311  
[www.kctl.co.kr](http://www.kctl.co.kr)

Report No.:  
KR19-SPF0001  
Page (4) of (115)



### 1. General information

Client : Intel Mobile Communications  
Address : 100 Center Point Circle, Suite 200 Columbia, South Carolina 29210 USA  
Manufacturer : Intel Mobile Communications  
Address : Steven Hackett / [steven.c.hackett@intel.com](mailto:steven.c.hackett@intel.com)  
Laboratory : KCTL Inc.  
Address : 65, Sinwon-ro, Yeongtong-gu, Suwon-si, Gyeonggi-do, 16677, Korea  
Accreditations : FCC Site Designation No: KR0040, FCC Site Registration No: 687132  
VCCI Registration No. : R-3327, G-198, C-3706, T-1849  
Industry Canada Registration No. : 8035A  
KOLAS No.: KT231



**KCTL Inc.**

65, Sinwon-ro, Yeongtong-gu,  
Suwon-si, Gyeonggi-do, 16677, Korea  
TEL: 82-31-285-0894 FAX: 82-505-299-8311  
[www.kctl.co.kr](http://www.kctl.co.kr)

Report No.:  
KR19-SPF0001  
Page (5) of (115)



## 2. Device information

### 2.1 Basic description

Product Name	Intel® Dual Band Wireless-AC 8260
Product Model Number	8260D2W
Product Manufacturer	Intel Mobile Communications
Host Product Name	Notebook PC
Host Model Number	NP370E5A
Host Manufacturer	Samsung Electronics Co., Ltd.
Host Serial Number	0AB391CD00D001
Mode of Operation	WLAN 2.4 GHz / 5 GHz, Bluetooth
Tx Freq. Range	WLAN 2.4 GHz : 2 412 MHz ~ 2 462 MHz WLAN 5.2 GHz : 5 180 MHz ~ 5 240 MHz WLAN 5.3 GHz : 5 260 MHz ~ 5 320 MHz WLAN 5.6 GHz : 5 500 MHz ~ 5 720 MHz WLAN 5.8 GHz : 5 745 MHz ~ 5 825 MHz Bluetooth : 2 402 MHz ~ 2 480 MHz
H/W Version	MP1.0
S/W Version	E00REW009

**KCTL Inc.**

65, Sinwon-ro, Yeongtong-gu,  
Suwon-si, Gyeonggi-do, 16677, Korea  
TEL: 82-31-285-0894 FAX: 82-505-299-8311  
[www.kctl.co.kr](http://www.kctl.co.kr)

Report No.:  
KR19-SPF0001  
Page (6) of (115)



## 2.2 RF power setting in TEST SW

### WLAN 2.4 GHz (2 412 MHz ~ 2 462 MHz)

Mode	Lowest Channel	Middle Channel	Highest Channel
802.11b Ant.0	16.0	16.0	16.0
802.11b Ant.1	16.0	16.0	16.0

### WLAN 5.3 GHz (5 260 MHz ~ 5 320 MHz)

Mode	Lowest Channel	Middle Channel	Highest Channel
802.11a Ant.0	15.0	15.0	15.0
802.11a Ant.1	15.0	15.5	15.5

### WLAN 5.6 GHz (5 500 MHz ~ 5 720 MHz)

Mode	Lowest Channel	Middle Channel	Highest Channel
802.11ac(VHT-80) Ant.0	13.0	16.5	16.5
802.11ac(VHT-80) Ant.1	13.5	16.0	16.0

### WLAN 5.8 GHz (5 745 MHz ~ 5 825 MHz)

Mode	Lowest Channel	Middle Channel	Highest Channel
802.11ac(VHT-80) Ant.0	-	14.5	-
802.11ac(VHT-80) Ant.1	-	15.0	-

# KCTL Inc.

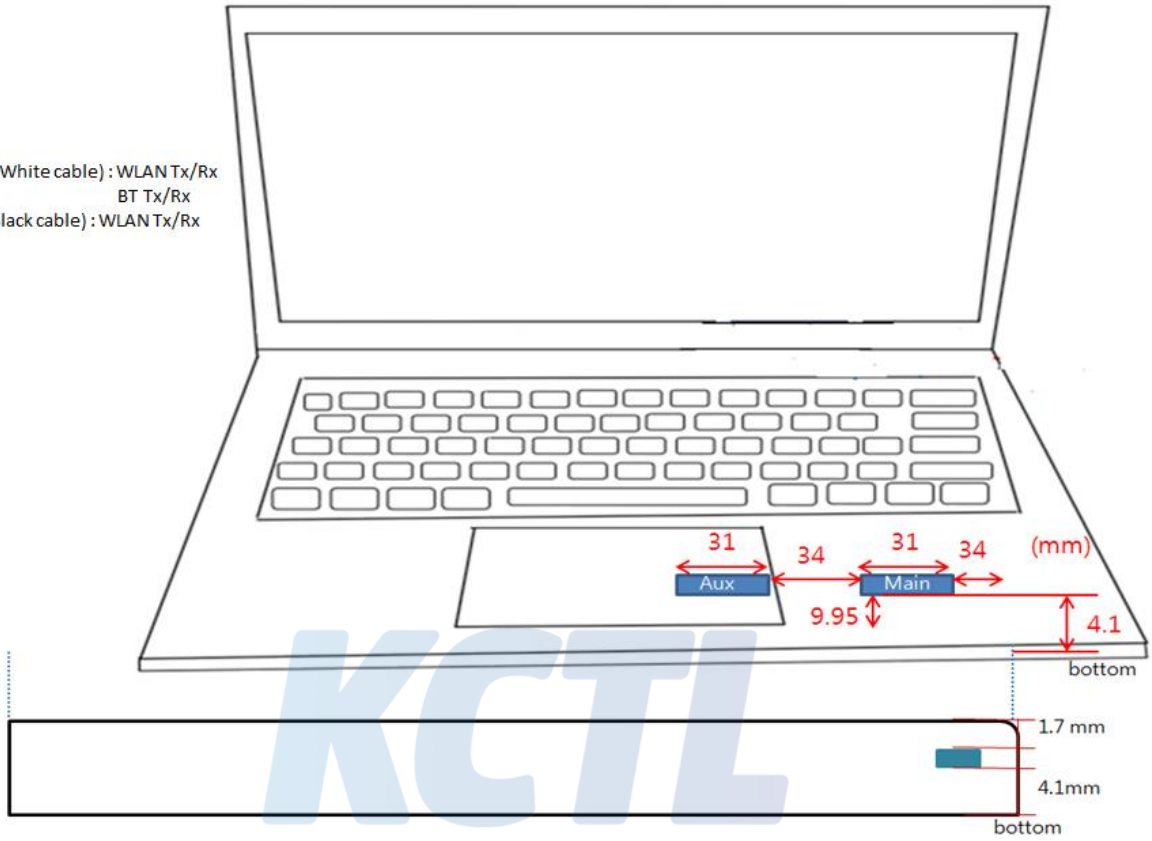
65, Sinwon-ro, Yeongtong-gu,  
Suwon-si, Gyeonggi-do, 16677, Korea  
TEL: 82-31-285-0894 FAX: 82-505-299-8311  
[www.kctl.co.kr](http://www.kctl.co.kr)

Report No.:  
KR19-SPF0001  
Page (7) of (115)



## 2.3 Antenna Diagram

Main(Ant.0, White cable) : WLAN Tx/Rx  
BT Tx/Rx  
Aux(Ant.1, Black cable) : WLAN Tx/Rx



### 3. Summary of tests

#### 3.1 WLAN 2.4 GHz Body SAR

##### WLAN 2.4G Ant.0

Mode	EUT Position	Distance (mm)	Frequency (MHz)	Measured Conducted Power (dBm)	Max. Tune-up Power (dBm)	Power Scaling Factor	Duty Cycle Compensate Factor	Measured 1 g SAR (W/kg)	Scaled 1 g SAR (W/kg)	Plot No.
802.11b	Notebook Rear	0	2 462	15.70	16.0	1.07	1.01	0.144	<b>0.156</b>	#1

##### WLAN 2.4G Ant.1

Mode	EUT Position	Distance (mm)	Frequency (MHz)	Measured Conducted Power (dBm)	Max. Tune-up Power (dBm)	Power Scaling Factor	Duty Cycle Compensate Factor	Measured 10 g SAR (W/kg)	Scaled 10 g SAR (W/kg)	Plot No.
802.11b	Notebook Rear	0	2 462	15.70	16.0	1.07	1.01	0.176	<b>0.191</b>	#2

#### 3.2 WLAN 5 GHz Body SAR

##### WLAN 5.6G Ant.0

Mode	EUT Position	Distance (mm)	Frequency (MHz)	Measured Conducted Power (dBm)	Max. Tune-up Power (dBm)	Power Scaling Factor	Duty Cycle Compensate Factor	Measured 1 g SAR (W/kg)	Scaled 1 g SAR (W/kg)	Plot No.
802.11ac (VHT-80)	Notebook Rear	0	5 690	16.00	16.5	1.12	1.06	0.639	<b>0.760</b>	#5

##### WLAN 5.6G Ant.1

Mode	EUT Position	Distance (mm)	Frequency (MHz)	Measured Conducted Power (dBm)	Max. Tune-up Power (dBm)	Power Scaling Factor	Duty Cycle Compensate Factor	Measured 10 g SAR (W/kg)	Scaled 10 g SAR (W/kg)	Plot No.
802.11ac (VHT-80)	Notebook Rear	0	5 610	16.10	16.5	1.10	1.06	0.471	<b>0.548</b>	#6

<Note>

- \* SAR values were scaled to the maximum allowed power to determine compliance per KDB Publication 447498 D01v06.
- \* When battery operating of this device is worst case mode.
- \* 1 g SAR Limit 1.6 W/kg



**KCTL Inc.**

65, Sinwon-ro, Yeongtong-gu,  
Suwon-si, Gyeonggi-do, 16677, Korea  
TEL: 82-31-285-0894 FAX: 82-505-299-8311  
[www.kctl.co.kr](http://www.kctl.co.kr)

Report No.:  
KR19-SPF0001  
Page (9) of (115)

**KCTL****4. Report Overview**

This report details the results of testing carried out on the samples listed in section 2, the results contained in this test report do not relate to other samples of the same product. The manufacturer should ensure that all products in series production are in conformity with the product sample detailed in this report.

This report may only be reproduced and distributed in full. If the product in this test report is used in any configuration other than that detailed in the test report, the manufacturer must ensure the new configuration complies with all relevant standards and certification requirements. Any mention of KCTL Inc. Wireless lab or testing done by KCTL Inc. Wireless lab made in connection with the distribution or use of the tested product must be approved in writing by KCTL Inc. Wireless lab.

**5. Test Lab Declaration or Comments**

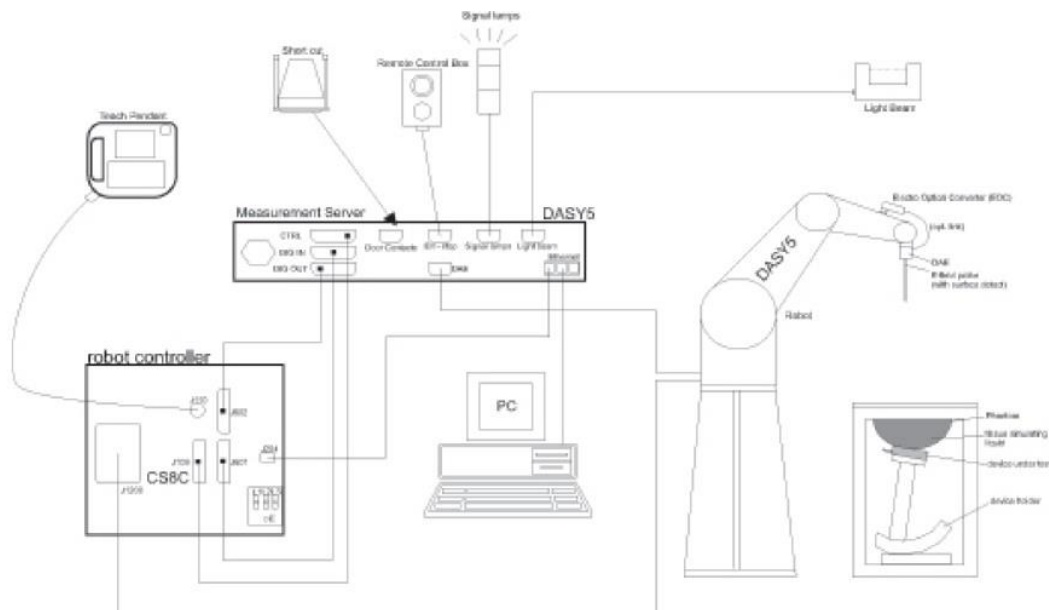
None

**6. Applicant Declaration or Comments**

None

**KCTL**


## 7. The SAR Measurement System




### <SAR System Configuration>


- A standard high precision 6-axis robot with controller, teach pendant and software. An arm extension for accommodating the data acquisition electronics (DAE).
- An isotropic Field probe optimized and calibrated for the targeted measurement.
- Data acquisition electronics (DAE) which performs the signal amplification, signal multiplexing, AD-conversion, offset measurements, mechanical surface detection, collision detection, etc. The unit is battery powered with standard or rechargeable batteries. The signal is optically transmitted to the EOC.
- The Electro-optical converter (EOC) performs the conversion from optical to electrical signals for the digital communication to the DAE. To use optical surface detection, a special version of the EOC is required. The EOC signal is transmitted to the measurement server.
- The function of the measurement server is to perform the time critical tasks such as signal filtering, control of the robot operation and fast movement interrupts.
- The Light Beam used is for probe alignment. This improves the (absolute) accuracy of the probe positioning.
- A computer running WinXP or Win7 and the DASY5 software.
- Remote control and teach pendant as well as additional circuitry for robot safety such as warning lamps, etc.
- The phantom, the device holder and other accessories according to the targeted measurement.

**7.1 Isotropic E-field Probe**

<b>ES3DV3 Isotropic E-Field Probe for Dosimetric Measurements</b>	
	Symmetrical design with triangular core Interleaved sensors Built-in shielding against static charges PEEK enclosure material (resistant to organic solvents, e.g., DGBE)
<b>Calibration</b>	ISO/IEC 17025 <a href="#">calibration service</a> available.
<b>Frequency</b>	10 MHz to 4 GHz; Linearity: $\pm 0.2$ dB (30 MHz to 4 GHz)
<b>Directivity</b>	$\pm 0.2$ dB in TSL (rotation around probe axis) $\pm 0.3$ dB in TSL (rotation normal to probe axis)
<b>Dynamic Range</b>	5 $\mu$ W/g to > 100 mW/g; Linearity: $\pm 0.2$ dB
<b>Dimensions</b>	Overall length: 337 mm (Tip: 20 mm) Tip diameter: 3.9 mm (Body: 12 mm) Distance from probe tip to dipole centers: 2.0 mm
<b>Application</b>	General dosimetry up to 4 GHz Dosimetry in strong gradient fields Compliance tests of mobile phones
<b>Compatibility</b>	DASY3, DASY4, DASY52 SAR and higher, EASY4/MRI

<b>EX3DV4 Smallest Isotropic E-Field Probe for Dosimetric Measurements (Preliminary Specifications)</b>	
	Symmetrical design with triangular core Built-in shielding against static charges PEEK enclosure material (resistant to organic solvents, e.g., DGBE)
<b>Calibration</b>	ISO/IEC 17025 <a href="#">calibration service</a> available.
<b>Frequency</b>	10 MHz to > 6 GHz Linearity: $\pm 0.2$ dB (30 MHz to 6 GHz)
<b>Directivity</b>	$\pm 0.3$ dB in TSL (rotation around probe axis) $\pm 0.5$ dB in TSL (rotation normal to probe axis)
<b>Dynamic Range</b>	10 $\mu$ W/g to > 100 mW/g Linearity: $\pm 0.2$ dB (noise: typically < 1 $\mu$ W/g)
<b>Dimensions</b>	Overall length: 337 mm (Tip: 20 mm) Tip diameter: 2.5 mm (Body: 12 mm) Typical distance from probe tip to dipole centers: 1 mm
<b>Application</b>	High precision dosimetric measurements in any exposure scenario (e.g., very strong gradient fields); the only probe that enables compliance testing for frequencies up to 6 GHz with precision of better 30%.
<b>Compatibility</b>	DASY3, DASY4, DASY52 SAR and higher, EASY4/MRI

**7.2 Phantom**

<b>Twin SAM</b>	
	<p>The shell corresponds to the specifications of the Specific Anthropomorphic Mannequin (SAM) phantom defined in IEEE 1528 and IEC 62209-1. It enables the dosimetric evaluation of left and right hand phone usage as well as body mounted usage at the flat phantom region. A cover prevents evaporation of the liquid. Reference markings on the phantom allow the complete setup of all predefined phantom positions and measurement grids by teaching three points with the robot.</p> <p>Twin SAM V5.0 has the same shell geometry and is manufactured from the same material as Twin SAM V4.0, but has reinforced top structure.</p>
<b>Material</b>	Vinylester, glass fiber reinforced (VE-GF)
<b>Liquid Compatibility</b>	Compatible with all SPEAG tissue simulating liquids (incl. DGBE type)
<b>Shell Thickness</b>	2 ± 0.2 mm (6 ± 0.2 mm at ear point)
<b>Dimensions (incl. Wooden Support)</b>	Length: 1000 mm Width: 500 mm Height: adjustable feet
<b>Filling Volume</b>	approx. 25 liters
<b>Wooden Support</b>	SPEAG standard phantom table
<b>Accessories</b>	<a href="#">Mounting Device and Adaptors</a>

<b>ELI</b>	
	<p>Phantom for compliance testing of handheld and body-mounted wireless devices in the frequency range of 30 MHz to 6 GHz. ELI is fully compatible with the IEC 62209-2 standard and all known tissue simulating liquids. ELI has been optimized regarding its performance and can be integrated into our standard phantom tables. A cover prevents evaporation of the liquid. Reference markings on the phantom allow installation of the complete setup, including all predefined phantom positions and measurement grids, by teaching three points. The phantom is compatible with all SPEAG dosimetric probes and dipoles.</p> <p>ELI V5.0 has the same shell geometry and is manufactured from the same material as ELI4, but has reinforced top structure. ELI V6.0, released in August 2014, has the same shell geometry as ELI4 but offers increased longterm stability.</p>
<b>Material</b>	Vinylester, glass fiber reinforced (VE-GF)
<b>Liquid Compatibility</b>	Compatible with all SPEAG tissue simulating liquids (incl. DGBE type)
<b>Shell Thickness</b>	2.0 ± 0.2 mm (bottom plate)
<b>Dimensions</b>	Major axis: 600 mm Minor axis: 400 mm
<b>Filling Volume</b>	approx. 30 liters
<b>Wooden Support</b>	SPEAG standard phantom table
<b>Accessories</b>	<a href="#">Mounting Device and Adaptors</a>

## 7.3 Device Holder for Transmitters

### Mounting Devices and Adaptors



Mounting Device for Hand-Held Transmitters

#### MD4HHTV5 - Mounting Device for Hand-Held Transmitters

In combination with the Twin SAM V5.0/V5.0c or ELI Phantoms, the Mounting Device for Hand-Held Transmitters enables rotation of the mounted transmitter device to specified spherical coordinates. At the heads, the rotation axis is at the ear opening. Transmitter devices can be easily and accurately positioned according to IEC 62209-1, IEEE 1528, FCC, or other specifications. The device holder can be locked for positioning at different phantom sections (left head, right head, flat).

**Material:** Polyoxymethylene (POM)



Mounting Device for Laptops

#### MD4LAPV5 - Mounting Device for Laptops and other Body-Worn Transmitters

In combination with the Twin SAM V5.0/V5.0c or ELI Phantoms, the Mounting Device (Body-Worn) enables testing of transmitter devices according to IEC 62209-2 specifications. The device holder can be locked for positioning at flat phantom section.

**Material:** Polyoxymethylene (POM), PET-G, Foam

## 8. System Verification

### 8.1 Tissue Verification

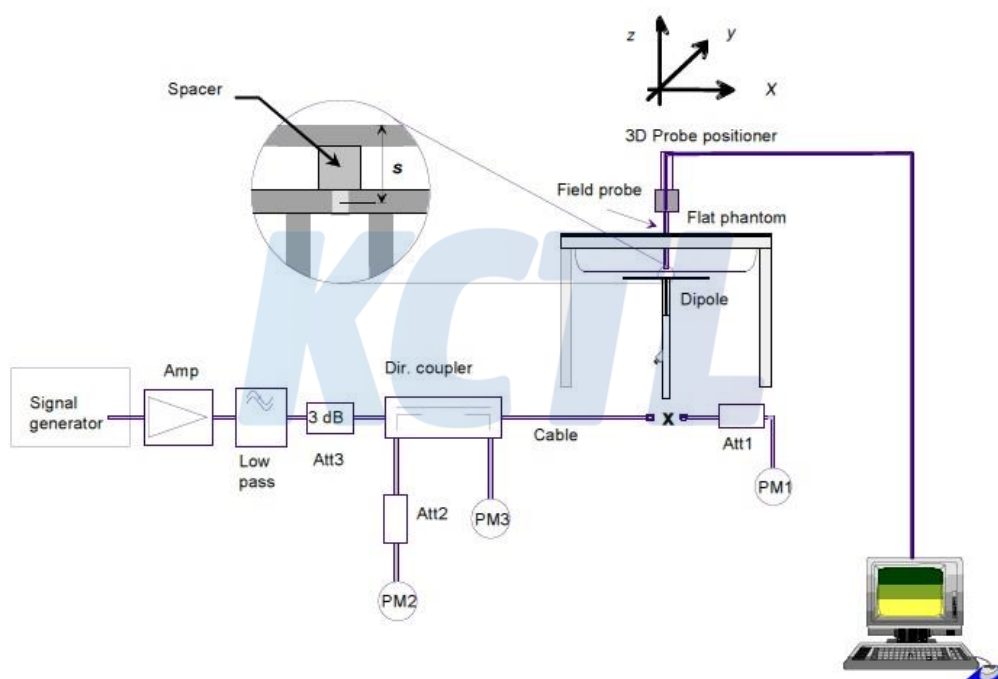
The dielectric properties for this Tissue Simulant Liquids were measured by using the SPEAG Model DAK3.5 Dielectric Probe in conjunction with Agilent E5071B Network Analyzer (300 kHz – 8 500 MHz). The Conductivity ( $\sigma$ ) and Permittivity ( $\rho$ ) are listed in Table 1. For the SAR measurement given in this report. The temperature variation of the Tissue Simulant Liquids was  $(22 \pm 2) ^\circ\text{C}$ .

Freq. (MHz)	Tissue Type	Limit/Measured	Permittivity ( $\rho$ )	Conductivity ( $\sigma$ )	Temp ( $^\circ\text{C}$ )
2 450	MSL	Recommended Limit	$52.70 \pm 5 \%$ (50.07 ~ 55.34)	$1.95 \pm 5 \%$ (1.85 ~ 2.05)	$22 \pm 2$
		Measured, 2018-12-27	51.11	2.00	21.50
5 300	MSL	Recommended Limit	$48.88 \pm 5 \%$ (46.44 ~ 51.32)	$5.42 \pm 5 \%$ (5.15 ~ 5.69)	$22 \pm 2$
		Measured, 2018-12-26	48.38	5.56	21.92
5 600	MSL	Recommended Limit	$48.47 \pm 5 \%$ (46.05 ~ 50.89)	$5.77 \pm 5 \%$ (5.48 ~ 6.06)	$22 \pm 2$
		Measured, 2018-12-27	47.83	5.86	21.77
5 800	MSL	Recommended Limit	$48.20 \pm 5 \%$ (45.79 ~ 50.61)	$6.00 \pm 5 \%$ (5.70 ~ 6.30)	$22 \pm 2$
		Measured, 2018-12-27	47.30	6.16	21.77

<Table 1.Measurement result of Tissue electric parameters>

## 8.2 Test System Verification

The microwave circuit arrangement for system verification is sketched below picture. The daily system accuracy verification occurs within the flat section of the SAM phantom. A SAR measurement was performed to see if the measured SAR was within  $\pm 10\%$  from the target SAR values. The tests were conducted on the same days as the measurement of the EUT. The obtained results from the system accuracy verification are displayed in the Table 2. During the tests, the ambient temperature of the laboratory was in the range  $(22 \pm 2) \text{ }^\circ\text{C}$ , the relative humidity was in the range  $(50 \pm 20)\%$  and the liquid depth Above the ear/grid reference points was above 15 cm in all the cases. It is seen that the system is operating within its specification, as the results are within acceptable tolerance of the reference values.



Validation Kit	Dipole Ant. S/N	Frequency (MHz)	Tissue Type	Limit/Measurement (Normalized to 1 W)	
					1 g
D2450V2	895	2 450	MSL	Recommended Limit (Normalized)	50.60 $\pm$ 10 % (45.54 ~ 55.66)
				Measured, 2018-12-27	53.60
D5GHzV2	1134	5 300	MSL	Recommended Limit (Normalized)	77.90 $\pm$ 10 % (70.11 ~ 85.69)
				Measured, 2018-12-26	82.10
D5GHzV2	1134	5 600	MSL	Recommended Limit (Normalized)	80.10 $\pm$ 10 % (72.09 ~ 88.11)
				Measured, 2018-12-27	84.50
D5GHzV2	1134	5 800	MSL	Recommended Limit (Normalized)	77.20 $\pm$ 10 % (69.48 ~ 84.92)
				Measured, 2018-12-27	79.30

<Table 2. Test System Verification Result>

### 8.3 Justification for Extended SAR Dipole Calibrations

Instead of the typical annual calibration recommended by measurement standards, longer calibration intervals of up to three years may be considered when it is demonstrated that the SAR target, impedance and return loss of a dipole have remain stable according to the following requirements

KDB 865664 D01v01r04 requirements

- a ) return loss : < - 20 dB, within 20 % of previous measurement
- b ) impedance : within 5Ω from previous measurement.

#### 5 300 MHz

Dipole Antenna	Head/Body	Date of Measurement	Return Loss (dB)	Δ %	Impedance (Ω)	Δ Ω
D5GHzV2 SN 1134	Body	2017.05.26	-26.1	10.6	49.8	2.0
		2018.05.25	-23.3		51.8	

#### 5 600 MHz

Dipole Antenna	Head/Body	Date of Measurement	Return Loss (dB)	Δ %	Impedance (Ω)	Δ Ω
D5GHzV2 SN 1134	Body	2017.05.26	-25.7	10.9	55.4	4.3
		2018.05.25	-28.5		51.1	

#### 5 800 MHz

Dipole Antenna	Head/Body	Date of Measurement	Return Loss (dB)	Δ %	Impedance (Ω)	Δ Ω
D5GHzV2 SN 1134	Body	2017.05.26	-23.2	11.4	56.5	2.1
		2018.05.25	-20.5		54.4	

- c) extrapolated peak SAR : within 15% of that reported in the calibration data

#### 5 300 MHz

Dipole Antenna	Head/Body	Date of Measurement	extrapolated peak SAR (W/kg)	Δ %
D5GHzV2 SN 1134	Body	2017.05.26	30.1	7
		2018.12.26	32.4	

#### 5 600 MHz

Dipole Antenna	Head/Body	Date of Measurement	extrapolated peak SAR (W/kg)	Δ %
D5GHzV2 SN 1134	Body	2017.05.26	33.3	9
		2018.12.27	36.7	

#### 5 800 MHz

Dipole Antenna	Head/Body	Date of Measurement	extrapolated peak SAR (W/kg)	Δ %
D5GHzV2 SN 1134	Body	2017.05.26	34.0	6
		2018.12.27	36.3	



**KCTL Inc.**

65, Sinwon-ro, Yeongtong-gu,  
Suwon-si, Gyeonggi-do, 16677, Korea  
TEL: 82-31-285-0894 FAX: 82-505-299-8311  
[www.kctl.co.kr](http://www.kctl.co.kr)

Report No.:  
KR19-SPF0001  
Page (17) of (115)

**KCTL****9. Operation Configurations**

Measurements were performed at the operating band. The EUT was set to maximum power level during all tests and at the beginning of each test the battery was fully charged.

**KCTL**

## 10. SAR Measurement Procedures

### Step 1: Power Reference Measurement

The Power Reference Measurement and Power Drift Measurements are for monitoring the power drift of the device under test in the batch process. The Minimum distance of probe sensors to surface determines the closest measurement point to phantom surface. The minimum distance of probe sensors to surface is 2 mm. This distance cannot be smaller than the Distance of sensor calibration points to probe tip as defined in the probe properties.

### Step 2: Area Scan

The Area Scan is used as a fast scan in two dimensions to find the area of high field values, before doing a fine measurement around the hot spot. The sophisticated interpolation routines implemented in DASY software can find the maximum locations even in relatively coarse grids. When an Area Scan has measured all reachable points, it computes the field maximal found in the scanned area, within a range of the global maximum. The range (in dB) is specified in the standards for compliance testing. For example, a 2 dB range is required in IEEE Standard 1528 and IEC 62209 standards, whereby 3 dB is a requirement when compliance is assessed in accordance with the ARIB standard (Japan). If only one Zoom Scan follows the Area Scan, then only the absolute maximum will be taken as reference. For cases where multiple maximums are detected, the number of Zoom Scans has to be increased accordingly.

Area Scan Parameters extracted from KDB 865664 D01 SAR Measurement 100 MHz to 6 GHz v01r04.

	≤ 3 GHz	> 3 GHz
Maximum distance from closest measurement point (geometric center of probe sensors) to phantom surface	5 ± 1 mm	$\frac{1}{2} \cdot \delta \cdot \ln(2) \pm 0.5$ mm
Maximum probe angle from probe axis to phantom surface normal at the measurement location	30° ± 1°	20° ± 1°
Maximum area scan spatial resolution: $\Delta x_{Area}$ , $\Delta y_{Area}$	≤ 2 GHz: ≤ 15 mm 2 – 3 GHz: ≤ 12 mm	3 – 4 GHz: ≤ 12 mm 4 – 6 GHz: ≤ 10 mm
	When the x or y dimension of the test device, in the measurement plane orientation, is smaller than the above, the measurement resolution must be ≤ the corresponding x or y dimension of the test device with at least one measurement point on the test device.	

### Step 3: Zoom Scan

Zoom Scans are used to assess the peak spatial SAR values within a cubic averaging volume containing 1 g and 10 g of simulated tissue. The Zoom Scan measures 5x5x7 points within a cube whose base faces are centered on the maxima found in a preceding area scan job within the same procedure. When the measurement is done, the Zoom Scan evaluates the averaged SAR for 1 g and 10 g and displays these values next to the job's label.

Zoom Scan Parameters extracted from KDB 865664 D01 SAR Measurement 100 MHz to 6 GHz v01r04.

		≤ 3 GHz	> 3 GHz
Maximum distance from closest measurement point (geometric center of probe sensors) to phantom surface		5 mm ± 1 mm	$\frac{1}{2} \cdot \delta \cdot \ln(2)$ mm 0.5 mm
Maximum probe angle from probe axis to phantom surface normal at the measurement location		30° ± 1°	20° ± 1°
Maximum area scan spatial resolution: $\Delta x_{Area}$ , $\Delta y_{Area}$		$\leq 2$ GHz: ≤ 15 mm $2 - 3$ GHz: ≤ 12 mm	$3 - 4$ GHz: ≤ 12 mm $4 - 6$ GHz: ≤ 10 mm
		When the x or y dimension of the test device, in the measurement plane orientation, is smaller than the above, the measurement resolution must be ≤ the corresponding x or y dimension of the test device with at least one measurement point on the test device.	
Maximum zoom scan spatial resolution: $\Delta x_{Zoom}$ , $\Delta y_{Zoom}$		$\leq 2$ GHz: ≤ 8 mm $2 - 3$ GHz: ≤ 5 mm*	$3 - 4$ GHz: ≤ 5 mm* $4 - 6$ GHz: ≤ 4 mm*
Maximum zoom scan spatial resolution, normal to phantom surface	uniform grid: $\Delta z_{Zoom}(n)$	≤ 5 mm	$3 - 4$ GHz: ≤ 4 mm $4 - 5$ GHz: ≤ 3 mm $5 - 6$ GHz: ≤ 2 mm
	graded grid	$\Delta z_{Zoom}(1)$ : between 1st two points closest to phantom surface $\Delta z_{Zoom}(n>1)$ : between subsequent points	$3 - 4$ GHz: ≤ 3 mm $4 - 5$ GHz: ≤ 2.5 mm $5 - 6$ GHz: ≤ 2 mm
		≤ 1.5 · $\Delta z_{Zoom}(n-1)$ mm	
Minimum zoom scan volume	x, y, z	≥ 30 mm	$3 - 4$ GHz: ≥ 28 mm $4 - 5$ GHz: ≥ 25 mm $5 - 6$ GHz: ≥ 22 mm
Note: $\delta$ is the penetration depth of a plane-wave at normal incidence to the tissue medium; see IEEE Std 1528-2013 for details. * When zoom scan is required and the reported SAR from the area scan based 1-g SAR estimation procedures of KDB Publication 447498 is ≤ 1.4 W/kg, ≤ 8 mm, ≤ 7 mm and ≤ 5 mm zoom scan resolution may be applied, respectively, for 2 GHz to 3 GHz, 3 GHz to 4 GHz and 4 GHz to 6 GHz.			

### Step 4: Power drift measurement

The Power Drift Measurement measures the field at the same location as the most recent power reference measurement within the same procedure, and with the same settings. The Power Drift Measurement gives the field difference in dB from the reading conducted within the last Power Reference Measurement. This allows a user to monitor the power drift of the device under test within a batch process. The measurement procedure is the same as Step 1.

### Step 5: Z-Scan

The Z Scan measures points along a vertical straight line. The line runs along the Z-axis of a one dimensional grid. In order to get a reasonable extrapolation, the extrapolated distance should not be larger than the step size in Z-direction.

\* Z Scan Report on Liquid Measure the height Appendix C. Liquid Depth photo to replace

**KCTL Inc.**

65, Sinwon-ro, Yeongtong-gu,  
Suwon-si, Gyeonggi-do, 16677, Korea  
TEL: 82-31-285-0894 FAX: 82-505-299-8311  
[www.kctl.co.kr](http://www.kctl.co.kr)

Report No.:  
KR19-SPF0001  
Page (20) of (115)



## 11. Test Equipment Information

Test Platform	SPEAG DASY5 System			
Version	DASY5 : Version 52.10.1.1476 SEMCAD : Version 14.6.11 (7439)			
Location	KCTL Inc.			
Manufacture	SPEAG			
Hardware Reference				
Equipment	Model	Serial Number	Date of Calibration	Due date of next Calibration
Shield Room	Shield Room	8F - #1	N/A	N/A
DASY5 Robot	TX90XL Speag	F07/554JA1/A/01	N/A	N/A
DASY5 Controller	TX90XL Speag	F07/554JA1/C/01	N/A	N/A
Phantom	2mm Oval Phantom ELI5	1220	N/A	N/A
Phantom	2mm Oval Phantom ELI5	1173	N/A	N/A
Mounting Device	Laptop Holder	None	N/A	N/A
DAE	DAE4	666	2018-06-07	2019-06-07
Probe	EX3DV4	3865	2018-08-29	2019-08-29
Signal Generator	E4438C	MY42080486	2018-01-05	2019-01-05
Dual Power Meter	E4419B	GB43312301	2018-05-15	2019-05-15
Power Sensor	8481H	3318A19377	2018-05-15	2019-05-15
Power Sensor	8481H	3318A19379	2018-05-15	2019-05-15
Attenuator	8491B 3dB	17387	2018-05-14	2019-05-14
Attenuator	8491B-6dB	MY39270294	2018-05-14	2019-05-14
Attenuator	8491B 10dB	29425	2018-05-14	2019-05-14
Power Amplifier	2055 BBS3Q7E9I	1005D/C0521	2018-05-15	2019-05-15
Power Amplifier	5190FE	1012	2018-05-15	2019-05-15
Dual Directional Coupler	772D	2839A00719	2018-05-15	2019-05-15
Low Pass Filter	LA-30N	40058	2018-05-14	2019-05-14
Low Pass Filter	LA-60N	40059	2018-05-14	2019-05-14
Dipole Validation Kits	D2450V2	895	2018-07-24	2020-07-24
Dipole Validation Kits	D5GHzV2	1134	2017-05-26	2019-05-26
Network Analyzer	E5071B	MY42403524	2018-01-05	2019-01-05
Dielectric Assessment kit	DAK-3.5	1046	2018-04-17	2019-04-17
Humidity/Temp. Data Recorder	MHB-382SD	23107	2018-06-14	2019-06-14

This test report shall not be reproduced, except in full, without the written approval

KCTL-TIA002-004/1

**KCTL Inc.**

65, Sinwon-ro, Yeongtong-gu,  
Suwon-si, Gyeonggi-do, 16677, Korea  
TEL: 82-31-285-0894 FAX: 82-505-299-8311  
[www.kctl.co.kr](http://www.kctl.co.kr)

Report No.:  
KR19-SPF0001  
Page (21) of (115)



## 12. RF Average Conducted Output Power

### 12.1 Max. tune up power

WLAN 2.4 GHz Ant.0 (2 412 MHz ~ 2 462 MHz)

Mode	Channel	Target Power (dBm)	Tolerance (dB)	Max. Allowed Power (dBm)
802.11b	All Channel	15.00	1.00	16.00
802.11g	All Channel	15.00	1.00	16.00
802.11n(HT-20)	All Channel	15.00	1.00	16.00
802.11n(HT-40)	3-8 Channel	15.00	1.00	16.00
	9 Channel	13.50	1.00	14.50

WLAN 2.4 GHz Ant.1 (2 412 MHz ~ 2 462 MHz)

Mode	Channel	Target Power (dBm)	Tolerance (dB)	Max. Allowed Power (dBm)
802.11b	All Channel	15.00	1.00	16.00
802.11g	All Channel	15.00	1.00	16.00
802.11n(HT-20)	All Channel	15.00	1.00	16.00
802.11n(HT-40)	3-8 Channel	15.00	1.00	16.00
	9 Channel	13.00	1.00	14.00

WLAN 2.4 GHz MIMO (2 412 MHz ~ 2 462 MHz)

Mode	Channel	Target Power (dBm)	Tolerance (dB)	Max. Allowed Power (dBm)
802.11n(HT-20)	All Channel	12.00	1.00	13.00
802.11n(HT-40)	All Channel	12.00	1.00	13.00

**KCTL Inc.**

65, Sinwon-ro, Yeongtong-gu,  
Suwon-si, Gyeonggi-do, 16677, Korea  
TEL: 82-31-285-0894 FAX: 82-505-299-8311  
[www.kctl.co.kr](http://www.kctl.co.kr)

Report No.:  
KR19-SPF0001  
Page (22) of (115)

**WLAN 5.2 GHz Ant.0 (5 180 MHz ~ 5 240 MHz)**

Mode	Channel	Target Power (dBm)	Tolerance (dB)	Max. Allowed Power (dBm)
802.11a	All Channel	14.50	1.00	15.50
802.11n(HT-20)	All Channel	14.50	1.00	15.50
802.11ac(VHT-20)	All Channel	14.50	1.00	15.50
802.11n(HT-40)	All Channel	14.50	1.00	15.50
802.11ac(VHT-40)	All Channel	14.50	1.00	15.50
802.11ac(VHT-80)	All Channel	13.00	1.00	14.00

**WLAN 5.2 GHz Ant.1 (5 180 MHz ~ 5 240 MHz)**

Mode	Channel	Target Power (dBm)	Tolerance (dB)	Max. Allowed Power (dBm)
802.11a	All Channel	14.50	1.00	15.50
802.11n(HT-20)	All Channel	14.50	1.00	15.50
802.11ac(VHT-20)	All Channel	14.50	1.00	15.50
802.11n(HT-40)	All Channel	14.50	1.00	15.50
802.11ac(VHT-40)	All Channel	14.50	1.00	15.50
802.11ac(VHT-80)	All Channel	13.00	1.00	14.00

**WLAN 5.2 GHz MIMO (5 180 MHz ~ 5 240 MHz)**

Mode	Channel	Target Power (dBm)	Tolerance (dB)	Max. Allowed Power (dBm)
802.11n(HT-20)	All Channel	12.50	1.00	13.50
802.11ac(VHT-20)	All Channel	12.50	1.00	13.50
802.11n(HT-40)	All Channel	11.50	1.00	12.50
802.11ac(VHT-40)	All Channel	12.50	1.00	13.50
802.11ac(VHT-80)	All Channel	11.00	1.00	12.00

**WLAN 5.3 GHz Ant.0 (5 260 MHz ~ 5 320 MHz)**

Mode	Channel	Target Power (dBm)	Tolerance (dB)	Max. Allowed Power (dBm)
802.11a	All Channel	14.50	1.00	15.50
802.11n(HT-20)	All Channel	14.50	1.00	15.50
802.11ac(VHT-20)	All Channel	14.50	1.00	15.50
802.11n(HT-40)	All Channel	13.00	1.00	14.00
802.11ac(VHT-40)	All Channel	13.00	1.00	14.00
802.11ac(VHT-80)	All Channel	11.00	1.00	12.00

**KCTL Inc.**

65, Sinwon-ro, Yeongtong-gu,  
Suwon-si, Gyeonggi-do, 16677, Korea  
TEL: 82-31-285-0894 FAX: 82-505-299-8311  
[www.kctl.co.kr](http://www.kctl.co.kr)

Report No.:  
KR19-SPF0001  
Page (23) of (115)

**WLAN 5.3 GHz Ant.1 (5 260 MHz ~ 5 320 MHz)**

Mode	Channel	Target Power (dBm)	Tolerance (dB)	Max. Allowed Power (dBm)
802.11a	All Channel	14.50	1.00	15.50
802.11n(HT-20)	All Channel	14.50	1.00	15.50
802.11ac(VHT-20)	All Channel	14.50	1.00	15.50
802.11n(HT-40)	All Channel	14.00	1.00	15.00
802.11ac(VHT-40)	All Channel	14.00	1.00	15.00
802.11ac(VHT-80)	All Channel	12.00	1.00	13.00

**WLAN 5.3 GHz MIMO (5 260 MHz ~ 5 320 MHz)**

Mode	Channel	Target Power (dBm)	Tolerance (dB)	Max. Allowed Power (dBm)
802.11n(HT-20)	All Channel	11.50	1.00	12.50
802.11ac(VHT-20)	All Channel	11.50	1.00	12.50
802.11n(HT-40)	All Channel	11.00	1.00	12.00
802.11ac(VHT-40)	All Channel	11.50	1.00	12.50
802.11ac(VHT-80)	All Channel	9.00	1.00	10.00

**WLAN 5.6 GHz Ant.0 (5 500 MHz ~ 5 720 MHz)**

Mode	Channel	Target Power (dBm)	Tolerance (dB)	Max. Allowed Power (dBm)
802.11a	All Channel	15.50	1.00	16.50
802.11n(HT-20)	All Channel	15.50	1.00	16.50
802.11ac(VHT-20)	All Channel	15.50	1.00	16.50
802.11n(HT-40)	102 channel	13.00	1.00	14.00
	except 102 channel	15.50	1.00	16.50
802.11ac(VHT-40)	102 channel	13.00	1.00	14.00
	except 102 channel	15.50	1.00	16.50
802.11ac(VHT-80)	106 channel	12.00	1.00	13.00
	except 106 channel	15.50	1.00	16.50

**KCTL Inc.**

65, Sinwon-ro, Yeongtong-gu,  
Suwon-si, Gyeonggi-do, 16677, Korea  
TEL: 82-31-285-0894 FAX: 82-505-299-8311  
[www.kctl.co.kr](http://www.kctl.co.kr)

Report No.:  
KR19-SPF0001  
Page (24) of (115)

**WLAN 5.6 GHz Ant.1 (5 500 MHz ~ 5 720 MHz)**

Mode	Channel	Target Power (dBm)	Tolerance (dB)	Max. Allowed Power (dBm)
802.11a	All Channel	15.50	1.00	16.50
802.11n(HT-20)	All Channel	15.50	1.00	16.50
802.11ac(VHT-20)	All Channel	15.50	1.00	16.50
802.11n(HT-40)	102 channel	14.00	1.00	15.00
	except 102 channel	15.50	1.00	16.50
802.11ac(VHT-40)	102 channel	14.00	1.00	15.00
	except 102 channel	15.50	1.00	16.50
802.11ac(VHT-80)	106 channel	12.00	1.00	13.00
	except 106 channel	15.50	1.00	16.50

**WLAN 5.6 GHz MIMO (5 500 MHz ~ 5 720 MHz)**

Mode	Channel	Target Power (dBm)	Tolerance (dB)	Max. Allowed Power (dBm)
802.11n(HT-20)	All Channel	12.50	1.00	13.50
802.11ac(VHT-20)	All Channel	12.50	1.00	13.50
802.11n(HT-40)	102 channel	12.00	1.00	13.00
	except 102 channel	12.50	1.00	13.50
802.11ac(VHT-40)	102 channel	12.50	1.00	13.50
	except 102 channel	12.00	1.00	13.00
802.11ac(VHT-80)	106 channel	11.00	1.00	12.00
	except 106 channel	15.50	1.00	16.50

**WLAN 5.8 GHz Ant.0 (5 745 MHz ~ 5 825 MHz)**

Mode	Channel	Target Power (dBm)	Tolerance (dB)	Max. Allowed Power (dBm)
802.11a	All Channel	13.50	1.00	14.50
802.11n(HT-20)	All Channel	13.50	1.00	14.50
802.11ac(VHT-20)	All Channel	13.50	1.00	14.50
802.11n(HT-40)	All Channel	13.50	1.00	14.50
802.11ac(VHT-40)	All Channel	13.50	1.00	14.50
802.11ac(VHT-80)	All Channel	13.50	1.00	14.50



**KCTL Inc.**

65, Sinwon-ro, Yeongtong-gu,  
Suwon-si, Gyeonggi-do, 16677, Korea  
TEL: 82-31-285-0894 FAX: 82-505-299-8311  
[www.kctl.co.kr](http://www.kctl.co.kr)

Report No.:  
KR19-SPF0001  
Page (25) of (115)

**WLAN 5.8 GHz Ant.1 (5 745 MHz ~ 5 825 MHz)**

Mode	Channel	Target Power (dBm)	Tolerance (dB)	Max. Allowed Power (dBm)
802.11a	All Channel	13.50	1.00	14.50
802.11n(HT-20)	All Channel	13.50	1.00	14.50
802.11ac(VHT-20)	All Channel	13.50	1.00	14.50
802.11n(HT-40)	All Channel	13.50	1.00	14.50
802.11ac(VHT-40)	All Channel	13.50	1.00	14.50
802.11ac(VHT-80)	All Channel	13.50	1.00	14.50

**WLAN 5.8 GHz MIMO (5 745 MHz ~ 5 825 MHz)**

Mode	Channel	Target Power (dBm)	Tolerance (dB)	Max. Allowed Power (dBm)
802.11n(HT-20)	All Channel	10.50	1.00	11.50
802.11ac(VHT-20)	All Channel	10.50	1.00	11.50
802.11n(HT-40)	All Channel	10.50	1.00	11.50
802.11ac(VHT-40)	All Channel	10.50	1.00	11.50
802.11ac(VHT-80)	All Channel	12.50	1.00	13.50

**Bluetooth (2 402 MHz ~ 2 480 MHz)**

Mode	Max. Allowed Power (including tune-up tolerance)
BDR(GFSK)	7.00 dBm
EDR ( $\pi/4$ DQPSK)	7.00 dBm
EDR(8DPSK)	7.00 dBm
LE(GFSK)	6.00 dBm

**12.2 Average Conducted Output Power**

## WLAN 2.4 GHz Ant.0 (2 412 MHz ~ 2 462 MHz)

Mode	Conducted Powers (dBm)		
	Low	Mid.	High
802.11b_1 Mbps	15.50	15.30	15.70

## WLAN 2.4 GHz Ant.1 (2 412 MHz ~ 2 462 MHz)

Mode	Conducted Powers (dBm)		
	Low	Mid.	High
802.11b_1 Mbps	15.50	15.50	15.70

## WLAN 5.3 GHz Ant.0 (5 260 MHz ~ 5 320 MHz)

Mode	Conducted Powers (dBm)		
	Low	Mid.	High
802.11a_6 Mbps	14.70	14.60	14.60

## WLAN 5.3 GHz Ant.1 (5 260 MHz ~ 5 320 MHz)

Mode	Conducted Powers (dBm)		
	Low	Mid.	High
802.11a_6 Mbps	14.80	15.00	14.90

## WLAN 5.6 GHz Ant.0 (5 500 MHz ~ 5 720 MHz)

Mode	Conducted Powers (dBm)		
	Low	Mid.	High
802.11ac(VHT-80)_MCS 0	12.70	15.90	16.00

## WLAN 5.6 GHz Ant.1 (5 500 MHz ~ 5 720 MHz)

Mode	Conducted Powers (dBm)		
	Low	Mid.	High
802.11ac(VHT-80)_MCS 0	12.70	16.10	15.70

## WLAN 5.8 GHz Ant.0 (5 745 MHz ~ 5 825 MHz)

Mode	Conducted Powers (dBm)		
	Low	Mid.	High
802.11ac(VHT-80)_MCS 0	-	14.10	-

## WLAN 5.8 GHz Ant.1 (5 745 MHz ~ 5 825 MHz)

Mode	Conducted Powers (dBm)		
	Low	Mid.	High
802.11ac(VHT-80)_MCS 0	-	14.20	-

**KCTL Inc.**

65, Sinwon-ro, Yeongtong-gu,  
Suwon-si, Gyeonggi-do, 16677, Korea  
TEL: 82-31-285-0894 FAX: 82-505-299-8311  
[www.kctl.co.kr](http://www.kctl.co.kr)

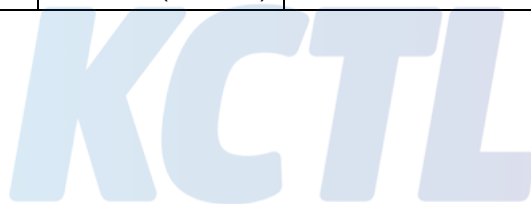
Report No.:  
KR19-SPF0001  
Page (27) of (115)

**Bluetooth (2 402 MHz ~ 2 480 MHz)**

Mode	Conducted Powers (dBm)		
	Low	Mid.	High
BDR(GFSK)	4.42	4.62	4.72
EDR ( $\pi/4$ DQPSK)	4.65	4.75	4.75
EDR(8DPSK)	4.64	4.84	4.94
LE(GFSK)	4.45	4.25	3.95

**WLAN Duty Cycle**

Mode			Duty Cycle [%]	Duty Cycle Compensate Factor
WLAN 2.4 GHz	Ant.0	802.11b	99.0	1.01
	Ant.1	802.11b	98.9	1.01
WLAN 5.3 GHz	Ant.0	802.11a	98.7	1.01
	Ant.1	802.11a	98.7	1.01
WLAN 5.6 GHz	Ant.0	802.11ac(VHT-80)	94.3	1.06
	Ant.1	802.11ac(VHT-80)	94.3	1.06
WLAN 5.8 GHz	Ant.0	802.11ac(VHT-80)	94.3	1.06
	Ant.1	802.11ac(VHT-80)	94.3	1.06



**13. SAR Test Exclusions Applied**

Per FCC KDB 447498 D01v06, The SAR exclusion threshold for distance < 50 mm is defined by the following equation:

$$\frac{\text{Max Power of Channel (mW)}}{\text{Test Separation Distance (mm)}} * \sqrt{\text{Frequency (GHz)}} \leq 3.0$$

Mode	Frequency (MHz)	Maximum Allowed Power (mW)	Separation Distance (mm)	≤ 3.0
Bluetooth	2 480	5.01	5	1.58

Based on the maximum conducted power of Bluetooth and antenna to use separation distance, Bluetooth SAR was not required.

This device contains transmitters that may operate simultaneously. Therefore simultaneous transmission analysis is required. Per FCC KDB 447498 D01v06, simultaneous transmission SAR test exclusion may be applied when the sum of the 1-g SAR for all the simultaneous transmitting antennas in a specific a physical test configuration is ≤ 1.6W/kg. When standalone SAR is not required to be measured per FCC KDB 447498 D01v06, the following equation must be used to estimate the standalone 1-g SAR for simultaneous transmission assessment involving that transmitter.

$$\text{Estimated SAR} = \frac{\sqrt{f \text{ (GHz)}}}{7.5} * \frac{(\text{Max Power of Channel mW})}{\text{Min Separation Distance}}$$

Mode	Frequency (MHz)	Maximum Allowed Power (mW)	Separation Distance (Body) (mm)	Estimated SAR (Body) (W/kg)
Bluetooth	2 480	5.01	5	0.210

## KCTL Inc.

65, Sinwon-ro, Yeongtong-gu,  
Suwon-si, Gyeonggi-do, 16677, Korea  
TEL: 82-31-285-0894 FAX: 82-505-299-8311  
[www.kctl.co.kr](http://www.kctl.co.kr)

Report No.:  
KR19-SPF0001  
Page (29) of (115)

# KCTL

## 14. SAR Test Results

### 14.1 WLAN 2.4 GHz Body SAR Test Results

#### WLAN 2.4G Ant.0

Mode	EUT Position	Distance (mm)	Frequency (MHz)	Measured Conducted Power (dBm)	Max. Tune-up Power (dBm)	Power Scaling Factor	Duty Cycle Compensate Factor	Measured 1 g SAR (W/kg)	Scaled 1 g SAR (W/kg)	Plot No.
802.11b	Notebook Rear	0	2 462	15.70	16.0	1.07	1.01	0.144	<b>0.156</b>	#1

#### WLAN 2.4G Ant.1

Mode	EUT Position	Distance (mm)	Frequency (MHz)	Measured Conducted Power (dBm)	Max. Tune-up Power (dBm)	Power Scaling Factor	Duty Cycle Compensate Factor	Measured 10 g SAR (W/kg)	Scaled 10 g SAR (W/kg)	Plot No.
802.11b	Notebook Rear	0	2 462	15.70	16.0	1.07	1.01	0.176	<b>0.191</b>	#2

<Note>

\* SAR values were scaled to the maximum allowed power to determine compliance per KDB Publication 447498 D01v06.

\* For WLAN 2.4 GHz, the highest measured maximum output power channel for DSSS was selected for SAR measurement. When the reported SAR is  $\leq 0.8$  W/kg, no further SAR testing is required. Otherwise, SAR is evaluated at the next highest measured output power channel. When any reported SAR is  $> 1.2$  W/kg, SAR is required for the third channel. For OFDM modes (802.11g/n), SAR is not required when the highest reported SAR for DSSS is adjusted by the ratio of OFDM to DSSS specified maximum output power and it is  $\leq 1.2$  W/kg per KDB Publication 248227 D01v02r02.

\* 1 g SAR Limit 1.6 W/kg

**KCTL Inc.**

65, Sinwon-ro, Yeongtong-gu,  
Suwon-si, Gyeonggi-do, 16677, Korea  
TEL: 82-31-285-0894 FAX: 82-505-299-8311  
[www.kctl.co.kr](http://www.kctl.co.kr)

Report No.:  
KR19-SPF0001  
Page (30) of (115)



## 14.2 WLAN 5.3 GHz Body SAR Test Results

### WLAN 5.3G Ant.0

Mode	EUT Position	Distance (mm)	Frequency (MHz)	Measured Conducted Power (dBm)	Max. Tune-up Power (dBm)	Power Scaling Factor	Duty Cycle Compensate Factor	Measured 1 g SAR (W/kg)	Scaled 1 g SAR (W/kg)	Plot No.
802.11a	Notebook Rear	0	5 260	14.70	15.5	1.20	1.01	0.416	<b>0.507</b>	#3

### WLAN 5.3G Ant.1

Mode	EUT Position	Distance (mm)	Frequency (MHz)	Measured Conducted Power (dBm)	Max. Tune-up Power (dBm)	Power Scaling Factor	Duty Cycle Compensate Factor	Measured 10 g SAR (W/kg)	Scaled 10 g SAR (W/kg)	Plot No.
802.11a	Notebook Rear	0	5 300	15.00	15.5	1.12	1.01	0.417	<b>0.474</b>	#4

<Note>

\* SAR values were scaled to the maximum allowed power to determine compliance per KDB Publication 447498 D01v06.

\* For WLAN 5 GHz, in each frequency band and aggregated band, SAR is evaluated for initial test configuration using the fixed test position or the initial test position procedure, when applicable. When the highest reported SAR for the initial test configuration (when applicable, include subsequent highest output channels), according to the initial test position or fixed exposure position requirements, is adjusted by the ratio of the subsequent test configuration to initial test configuration specified maximum output power and the adjusted SAR is  $\leq 1.2$  W/kg, SAR is not required for that subsequent test configuration per KDB Publication 248227 D01v02r02.

\* For WLAN 5 GHz, When the same maximum output power is specified for U-NII-1 and U-NII-2A bands, begin SAR measurement in U-NII-2A band by applying the OFDM SAR requirements.

If the highest reported SAR for a test configuration is  $\leq 1.2$  W/kg, SAR is not required for U-NII-1 band for that configuration (802.11 mode and exposure condition); otherwise, each band is tested independently for SAR per KDB Publication 248227 D01v02r02.

\* 1 g SAR Limit 1.6 W/kg

**KCTL Inc.**

65, Sinwon-ro, Yeongtong-gu,  
Suwon-si, Gyeonggi-do, 16677, Korea  
TEL: 82-31-285-0894 FAX: 82-505-299-8311  
[www.kctl.co.kr](http://www.kctl.co.kr)

Report No.:  
KR19-SPF0001  
Page (31) of (115)



### 14.3 WLAN 5.6 GHz Body SAR Test Results

#### WLAN 5.6G Ant.0

Mode	EUT Position	Distance (mm)	Frequency (MHz)	Measured Conducted Power (dBm)	Max. Tune-up Power (dBm)	Power Scaling Factor	Duty Cycle Compensate Factor	Measured 1 g SAR (W/kg)	Scaled 1 g SAR (W/kg)	Plot No.
802.11ac (VHT-80)	Notebook Rear	0	5 690	16.00	16.5	1.12	1.06	0.639	<b>0.760</b>	#5

#### WLAN 5.6G Ant.1

Mode	EUT Position	Distance (mm)	Frequency (MHz)	Measured Conducted Power (dBm)	Max. Tune-up Power (dBm)	Power Scaling Factor	Duty Cycle Compensate Factor	Measured 10 g SAR (W/kg)	Scaled 10 g SAR (W/kg)	Plot No.
802.11ac (VHT-80)	Notebook Rear	0	5 610	16.10	16.5	1.10	1.06	0.471	<b>0.548</b>	#6

<Note>

\* SAR values were scaled to the maximum allowed power to determine compliance per KDB Publication 447498 D01v06.

\* For WLAN 5 GHz, in each frequency band and aggregated band, SAR is evaluated for initial test configuration using the fixed test position or the initial test position procedure, when applicable. When the highest reported SAR for the initial test configuration (when applicable, include subsequent highest output channels), according to the initial test position or fixed exposure position requirements, is adjusted by the ratio of the subsequent test configuration to initial test configuration specified maximum output power and the adjusted SAR is  $\leq 1.2$  W/kg, SAR is not required for that subsequent test configuration per KDB Publication 248227 D01v02r02.

\* 1 g SAR Limit 1.6 W/kg

**KCTL Inc.**

65, Sinwon-ro, Yeongtong-gu,  
Suwon-si, Gyeonggi-do, 16677, Korea  
TEL: 82-31-285-0894 FAX: 82-505-299-8311  
[www.kctl.co.kr](http://www.kctl.co.kr)

Report No.:  
KR19-SPF0001  
Page (32) of (115)



## 14.4 WLAN 5.8 GHz Body SAR Test Results

### WLAN 5.8G Ant.0

Mode	EUT Position	Distance (mm)	Frequency (MHz)	Measured Conducted Power (dBm)	Max. Tune-up Power (dBm)	Power Scaling Factor	Duty Cycle Compensate Factor	Measured 1 g SAR (W/kg)	Scaled 1 g SAR (W/kg)	Plot No.
802.11ac (VHT-80)	Notebook Rear	0	5 775	14.10	14.5	1.10	1.06	0.329	<b>0.383</b>	#7

### WLAN 5.8G Ant.1

Mode	EUT Position	Distance (mm)	Frequency (MHz)	Measured Conducted Power (dBm)	Max. Tune-up Power (dBm)	Power Scaling Factor	Duty Cycle Compensate Factor	Measured 10 g SAR (W/kg)	Scaled 10 g SAR (W/kg)	Plot No.
802.11ac (VHT-80)	Notebook Rear	0	5 775	14.20	14.5	1.07	1.06	0.456	<b>0.518</b>	#8

<Note>

\* SAR values were scaled to the maximum allowed power to determine compliance per KDB Publication 447498 D01v06.

\* For WLAN 5 GHz, in each frequency band and aggregated band, SAR is evaluated for initial test configuration using the fixed test position or the initial test position procedure, when applicable. When the highest reported SAR for the initial test configuration (when applicable, include subsequent highest output channels), according to the initial test position or fixed exposure position requirements, is adjusted by the ratio of the subsequent test configuration to initial test configuration specified maximum output power and the adjusted SAR is  $\leq 1.2$  W/kg, SAR is not required for that subsequent test configuration per KDB Publication 248227 D01v02r02.

\* 1 g SAR Limit 1.6 W/kg



**14.5 Simultaneous Transmission**

## Notebook Body SAR Simultaneous Transmission

Band	EUT Position	Scaled 1 g SAR Main Ant (W/kg)	Scaled 1 g SAR Aux Ant (W/kg)	Scaled 1 g SAR Bluetooth (W/kg)	$\Sigma$ 1 g SAR (W/kg)	1 g SAR Limit (W/kg)
WLAN 2.4 GHz Main + WLAN 2.4GHz Aux	Notebook Rear	0.156	0.191	-	0.347	1.6
WLAN 5 GHz Main + WLAN 5 GHz Aux	Notebook Rear	0.760	0.548	-	1.31	
WLAN 2.4 GHz Main + Bluetooth Aux	Notebook Rear	0.156	-	0.210	0.366	
WLAN 5 GHz Main + Bluetooth Aux	Notebook Rear	0.760	-	0.210	0.970	
WLAN 5 GHz Main + WLAN 5 GHz Aux + Bluetooth Aux	Notebook Rear	0.760	0.548	0.210	<b>1.52</b>	

&lt;Note&gt;

## \* Simultaneous transmission SAR test exclusion considerations

: Simultaneous transmission SAR test exclusion is determined for each operating configuration and exposure condition according to the reported standalone SAR of each applicable simultaneously transmitting antenna. When the sum of 1-g or 10-g SAR of all simultaneously transmitting antennas in an operating mode and exposure condition combination is within the SAR limit, SAR test exclusion applies to that simultaneous transmission configuration. Per KDB Publication 447498 D01v06.

\* The above numerical summed SAR results for all the worst-case simultaneous transmission conditions were below the SAR limit (1.6 W/kg per 1-g). Therefore, the above analysis is sufficient to determine that simultaneous transmission cases will not exceed the SAR limit. And therefore no measured volumetric simultaneous SAR summation is required per FCC KDB Publication 447498 D01v06.

## 15. Test System Verification Results

### 2 450 MHz (2018-12-27)

**Procedure Name: d=10 mm, Pin=250 mW, dist=2.0mm (EX-Probe)**

Frequency: 2450 MHz; Duty Cycle: 1:1

Medium parameters used:  $f = 2450$  MHz;  $\sigma = 2$  S/m;  $\epsilon_r = 51.114$ ;  $\rho = 1000$  kg/m<sup>3</sup>

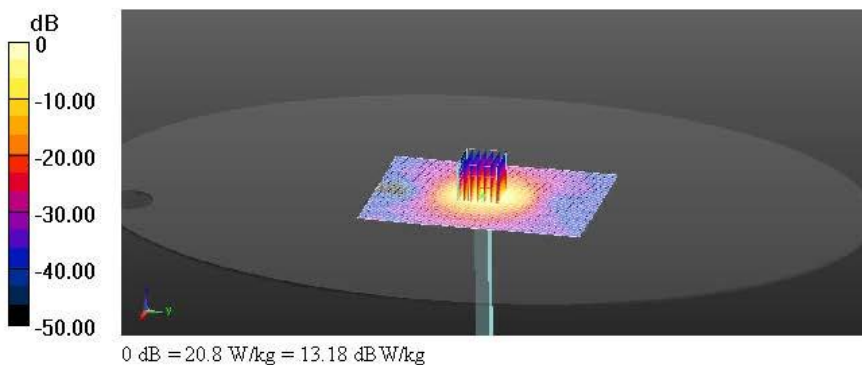
Phantom section: Flat Section

DASY5 Configuration:

- Probe: EX3DV4 - SN3865; ConvF(7.84, 7.84, 7.84) @ 2450 MHz; Calibrated: 2018-08-29
- Sensor-Surface: 2mm (Mechanical Surface Detection)
- Electronics: DAE4 Sn666; Calibrated: 2018-06-07
- Phantom: ELI V5.0 (20deg probe tilt)\_3\_20180808; Type: QD OVA 002 AA; Serial: 1173
- Measurement SW: DASY52, Version 52.10 (1); SEMCAD X Version 14.6.11 (7439)

**System Performance Check (without Area Scan)/d=10 mm, Pin=250 mW, dist=2.0mm (EX-Probe)/Area Scan (101x141x1):** Interpolate d grid: dx=1.200 mm, dy=1.200 mm  
Maximum value of SAR (interpolated) = 20.8 W/kg

**System Performance Check (without Area Scan)/d=10 mm, Pin=250 mW, dist=2.0mm (EX-Probe)/Zoom Scan (7x7x7)/Cube 0:** Measurement grid: dx=5mm, dy=5mm, dz=5mm  
Reference Value = 99.04 V/m; Power Drift = 0.04 dB  
Peak SAR (extrapolated) = 27.1 W/kg  
**SAR(1 g) = 13.4 W/kg; SAR(10 g) = 6.27 W/kg**  
Maximum value of SAR (measured) = 20.1 W/kg



**5 300 MHz (2018-12-26)****Procedure Name: d=10mm, Pin=100mW, f=5300MHz**

Frequency: 5300 MHz; Duty Cycle: 1:1

Medium parameters used:  $f = 5300$  MHz;  $\sigma = 5.555$  S/m;  $\epsilon_r = 48.385$ ;  $\rho = 1000$  kg/m<sup>3</sup>

Phantom section: Flat Section

DASY5 Configuration:

- Probe: EX3DV4 - SN3865; ConvF(4.3, 4.3, 4.3) @ 5300 MHz; Calibrated: 2018-08-29
- Sensor-Surface: 2mm (Mechanical Surface Detection)
- Electronics: DAE4 Sn666; Calibrated: 2018-06-07
- Phantom: ELI V5.0 (20deg probe tilt)\_2\_20180808; Type: QD OVA 002 BB; Serial: 1220
- Measurement SW: DASY52, Version 52.10 (1); SEMCAD X Version 14.6.11 (7439)

**Configuration/d=10mm, Pin=100mW, f=5300MHz/Area Scan (91x91x1): Interpolated**

grid: dx=1.000 mm, dy=1.000 mm

Maximum value of SAR (interpolated) = 15.7 W/kg

**Configuration/d=10mm, Pin=100mW, f=5300MHz/Zoom Scan (7x7x12)/Cube 0:**

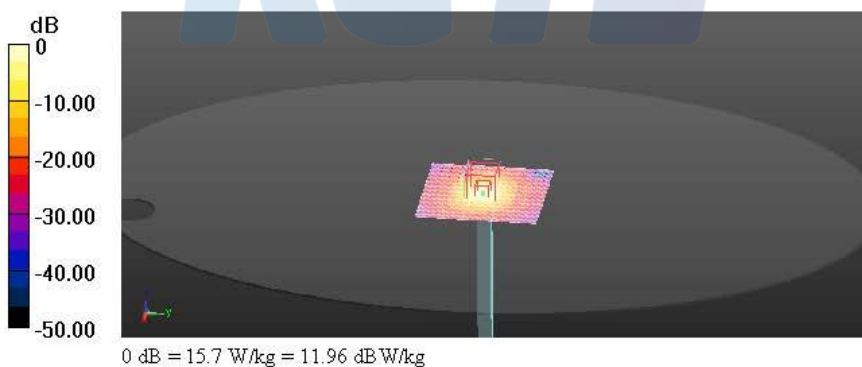
Measurement grid: dx=4mm, dy=4mm, dz=2mm

Reference Value = 61.25 V/m; Power Drift = 0.03 dB

Peak SAR (extrapolated) = 32.4 W/kg

**SAR(1 g) = 8.21 W/kg; SAR(10 g) = 2.31 W/kg**

Maximum value of SAR (measured) = 17.1 W/kg



**5 600 MHz (2018-12-27)****Procedure Name: d=10mm, Pin=100mW, f=5600MHz**

Frequency: 5600 MHz; Duty Cycle: 1:1

Medium parameters used:  $f = 5600$  MHz;  $\sigma = 5.856$  S/m;  $\epsilon_r = 47.832$ ;  $\rho = 1000$  kg/m<sup>3</sup>

Phantom section: Flat Section

DASY5 Configuration:

- Probe: EX3DV4 - SN3865; ConvF(3.92, 3.92, 3.92) @ 5600 MHz; Calibrated: 2018-08-29
- Sensor-Surface: 2mm (Mechanical Surface Detection)
- Electronics: DAE4 Sn666; Calibrated: 2018-06-07
- Phantom: ELI V5.0 (20deg probe tilt)\_2\_20180808; Type: QD OVA 002 BB; Serial: 1220
- Measurement SW: DASY52, Version 52.10 (1); SEMCAD X Version 14.6.11 (7439)

**Configuration/d=10mm, Pin=100mW, f=5600MHz/Area Scan (91x91x1): Interpolated**  
grid: dx=1.000 mm, dy=1.000 mm

Maximum value of SAR (interpolated) = 16.5 W/kg

**Configuration/d=10mm, Pin=100mW, f=5600MHz/Zoom Scan (7x7x12)/Cube 0:**

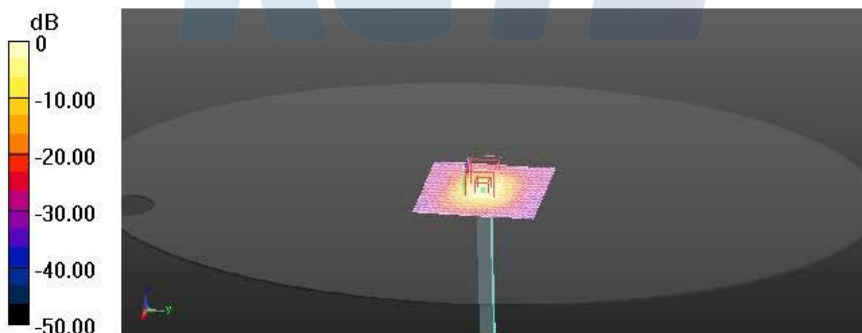
Measurement grid: dx=4mm, dy=4mm, dz=2mm

Reference Value = 59.81 V/m; Power Drift = 0.19 dB

Peak SAR (extrapolated) = 36.7 W/kg

**SAR(1 g) = 8.45 W/kg; SAR(10 g) = 2.38 W/kg**

Maximum value of SAR (measured) = 18.0 W/kg



**5 800 MHz (2018-12-27)****Procedure Name: d=10mm, Pin=100mW, f=5800MHz**

Frequency: 5800 MHz; Duty Cycle: 1:1

Medium parameters used:  $f = 5800 \text{ MHz}$ ;  $\sigma = 6.159 \text{ S/m}$ ;  $\epsilon_r = 47.299$ ;  $\rho = 1000 \text{ kg/m}^3$ 

Phantom section: Flat Section

DASY5 Configuration:

- Probe: EX3DV4 - SN3865; ConvF(4.28, 4.28, 4.28) @ 5800 MHz; Calibrated: 2018-08-29
- Sensor-Surface: 2mm (Mechanical Surface Detection)
- Electronics: DAE4 Sn666; Calibrated: 2018-06-07
- Phantom: ELI V5.0 (20deg probe tilt)\_2\_20180808; Type: QD OVA 002 BB; Serial: 1220
- Measurement SW: DASY52, Version 52.10 (1); SEMCAD X Version 14.6.11 (7439)

**Configuration/d=10mm, Pin=100mW, f=5800MHz/Area Scan (91x91x1): Interpolated**grid:  $dx=1.000 \text{ mm}$ ,  $dy=1.000 \text{ mm}$ 

Maximum value of SAR (interpolated) = 15.6 W/kg

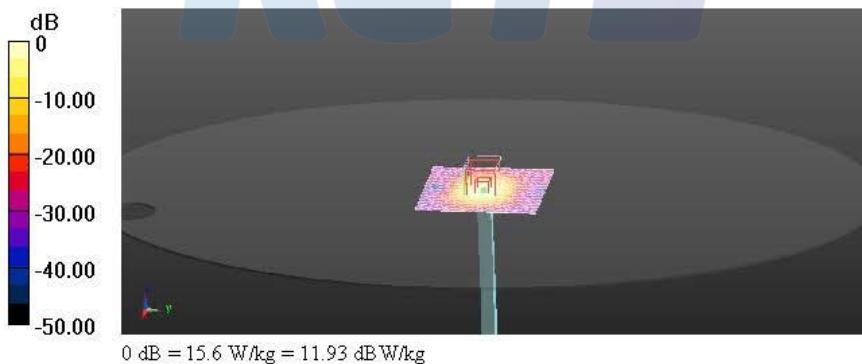
**Configuration/d=10mm, Pin=100mW, f=5800MHz/Zoom Scan (7x7x12)/Cube 0:**Measurement grid:  $dx=4\text{mm}$ ,  $dy=4\text{mm}$ ,  $dz=2\text{mm}$ 

Reference Value = 57.19 V/m; Power Drift = 0.08 dB

Peak SAR (extrapolated) = 36.3 W/kg

**SAR(1 g) = 7.93 W/kg; SAR(10 g) = 2.23 W/kg**

Maximum value of SAR (measured) = 17.2 W/kg



## 16. Test Results

#1

**Procedure Name: 802.11b\_f.2 462\_Notebook Rear\_0 mm\_Ant.0**

Frequency: 2462 MHz; Duty Cycle: 1:1

Medium parameters used:  $f = 2462$  MHz,  $\sigma = 2.021$  S/m,  $\epsilon_r = 51.05$ ,  $\rho = 1000$  kg/m<sup>3</sup>

Phantom section: Flat Section

DASY5 Configuration:

- Probe: EX3DV4 - SN3865; ConvF(7.84, 7.84, 7.84) @ 2462 MHz; Calibrated: 2018-08-29
- Sensor-Surface: 2mm (Mechanical Surface Detection)
- Electronics: DAE4 Sn666; Calibrated: 2018-06-07
- Phantom: ELI V5.0 (20deg probe tilt)\_3\_20180808; Type: QD OVA 002 AA; Serial: 1173
- Measurement SW: DASY52, Version 52.10 (1); SEMCAD X Version 14.6.11 (7439)

**Configuration/802.11b\_f.2 462\_Notebook Rear\_0 mm\_Ant.0/Area Scan (91x91x1):**Interpolated grid:  $dx=1.200$  mm,  $dy=1.200$  mm

Maximum value of SAR (interpolated) = 0.205 W/kg

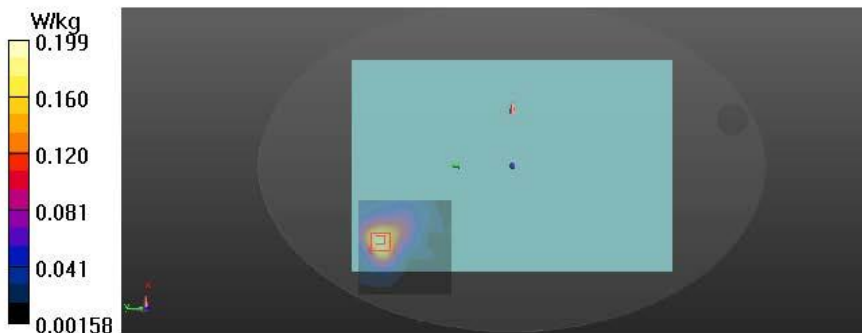
**Configuration/802.11b\_f.2 462\_Notebook Rear\_0 mm\_Ant.0/Zoom Scan (7x7x7)/Cube**0: Measurement grid:  $dx=5$ mm,  $dy=5$ mm,  $dz=5$ mm

Reference Value = 0 V/m; Power Drift = 0.00 dB

Peak SAR (extrapolated) = 0.260 W/kg

**SAR(1 g) = 0.144 W/kg; SAR(10 g) = 0.080 W/kg**

Maximum value of SAR (measured) = 0.199 W/kg



#2

**Procedure Name: 802.11b\_f.2 462\_Notebook Rear\_0 mm\_Ant.1**

Frequency: 2462 MHz; Duty Cycle: 1:1

Medium parameters used:  $f = 2462$  MHz;  $\sigma = 2.021$  S/m;  $\epsilon_r = 51.05$ ;  $\rho = 1000$  kg/m<sup>3</sup>

Phantom section: Flat Section

DASY5 Configuration:

- Probe: EX3DV4 - SN3865; ConvF(7.84, 7.84, 7.84) @ 2462 MHz; Calibrated: 2018-08-29
- Sensor-Surface: 2mm (Mechanical Surface Detection)
- Electronics: DAE4 Sn666; Calibrated: 2018-06-07
- Phantom: ELI V5.0 (20deg probe tilt)\_3\_20180808; Type: QD OVA 002 AA; Serial: 1173
- Measurement SW: DASY52, Version 52.10 (1); SEMCAD X Version 14.6.11 (7439)

**Configuration/802.11b\_f.2 462\_Notebook Rear\_0 mm\_Ant.1/Area Scan (91x81x1):**

Interpolated grid: dx=1.200 mm, dy=1.200 mm

Maximum value of SAR (interpolated) = 0.256 W/kg

**Configuration/802.11b\_f.2 462\_Notebook Rear\_0 mm\_Ant.1/Zoom Scan (7x7x7)/Cube**

0: Measurement grid: dx=5mm, dy=5mm, dz=5mm

Reference Value = 0 V/m; Power Drift = 0.00 dB

Peak SAR (extrapolated) = 0.326 W/kg

**SAR(1 g) = 0.176 W/kg; SAR(10 g) = 0.101 W/kg**

Maximum value of SAR (measured) = 0.244 W/kg



#3

**Procedure Name: 802.11a\_f.5 260\_Notebook Rear\_0 mm\_Ant.0**

Frequency: 5260 MHz; Duty Cycle: 1:1

Medium parameters used:  $f = 5260$  MHz;  $\sigma = 5.494$  S/m;  $\epsilon_r = 48.473$ ;  $\rho = 1000$  kg/m<sup>3</sup>

Phantom section: Flat Section

DASY5 Configuration:

- Probe: EX3DV4 - SN3865; ConvF(4.3, 4.3, 4.3) @ 5260 MHz; Calibrated: 2018-08-29
- Sensor-Surface: 2mm (Mechanical Surface Detection)
- Electronics: DAE4 Sn666; Calibrated: 2018-06-07
- Phantom: ELI V5.0 (20deg probe tilt)\_2\_20180808; Type: QD OVA 002 BB; Serial: 1220
- Measurement SW: DASY52, Version 52.10 (1); SEMCAD X Version 14.6.11 (7439)

**Configuration/802.11a\_f.5 260\_Notebook Rear\_0 mm\_Ant.0/Area Scan (121x121x1):**Interpolated grid:  $dx=1.000$  mm,  $dy=1.000$  mm

Maximum value of SAR (interpolated) = 0.799 W/kg

**Configuration/802.11a\_f.5 260\_Notebook Rear\_0 mm\_Ant.0/Zoom Scan (7x7x12)/Cube**0: Measurement grid:  $dx=4$ mm,  $dy=4$ mm,  $dz=2$ mm

Reference Value = 8.084 V/m; Power Drift = -0.03 dB

Peak SAR (extrapolated) = 1.68 W/kg

**SAR(1 g) = 0.416 W/kg; SAR(10 g) = 0.146 W/kg**

Maximum value of SAR (measured) = 0.773 W/kg





#4

**Procedure Name: 802.11a\_f.5 300\_Notebook Rear\_0 mm\_Ant.1**

Frequency: 5300 MHz; Duty Cycle: 1:1

Medium parameters used:  $f = 5300$  MHz;  $\sigma = 5.555$  S/m;  $\epsilon_r = 48.385$ ;  $\rho = 1000$  kg/m<sup>3</sup>

Phantom section: Flat Section

DASY5 Configuration:

- Probe: EX3DV4 - SN3865; ConvF(4.3, 4.3, 4.3) @ 5300 MHz; Calibrated: 2018-08-29
- Sensor-Surface: 2mm (Mechanical Surface Detection)
- Electronics: DAE4 Sn666; Calibrated: 2018-06-07
- Phantom: ELI V5.0 (20deg probe tilt)\_2\_20180808; Type: QD OVA 002 BB; Serial: 1220
- Measurement SW: DASY52, Version 52.10 (1); SEMCAD X Version 14.6.11 (7439)

**Configuration/802.11a\_f.5 300\_Notebook Rear\_0 mm\_Ant.1/Area Scan (121x121x1):**Interpolated grid:  $dx=1.000$  mm,  $dy=1.000$  mm

Maximum value of SAR (interpolated) = 0.812 W/kg

**Configuration/802.11a\_f.5 300\_Notebook Rear\_0 mm\_Ant.1/Zoom Scan (7x7x12)/Cube**0: Measurement grid:  $dx=4$ mm,  $dy=4$ mm,  $dz=2$ mm

Reference Value = 8.251 V/m; Power Drift = -0.07 dB

Peak SAR (extrapolated) = 1.38 W/kg

SAR(1 g) = 0.417 W/kg; SAR(10 g) = 0.144 W/kg

Maximum value of SAR (measured) = 0.793 W/kg



#5

**Procedure Name: 802.11ac80\_f.5 690\_Notebook Rear\_0 mm\_Ant.0**

Frequency: 5690 MHz; Duty Cycle: 1:1

Medium parameters used:  $f = 5690$  MHz;  $\sigma = 5.999$  S/m;  $\epsilon_r = 47.562$ ;  $\rho = 1000$  kg/m<sup>3</sup>

Phantom section: Flat Section

DASY5 Configuration:

- Probe: EX3DV4 - SN3865; ConvF(3.92, 3.92, 3.92) @ 5690 MHz; Calibrated: 2018-08-29
- Sensor-Surface: 2mm (Mechanical Surface Detection)
- Electronics: DAE4 Sn666; Calibrated: 2018-06-07
- Phantom: ELI V5.0 (20deg probe tilt)\_2\_20180808; Type: QD OVA 002 BB; Serial: 1220
- Measurement SW: DASY52, Version 52.10 (1); SEMCAD X Version 14.6.11 (7439)

**Configuration/802.11ac80\_f.5 690\_Notebook Rear\_0 mm\_Ant.0/Area Scan (111x111x1):**

Interpolated grid: dx=1.000 mm, dy=1.000 mm

Maximum value of SAR (interpolated) = 1.28 W/kg

**Configuration/802.11ac80\_f.5 690\_Notebook Rear\_0 mm\_Ant.0/Zoom Scan**

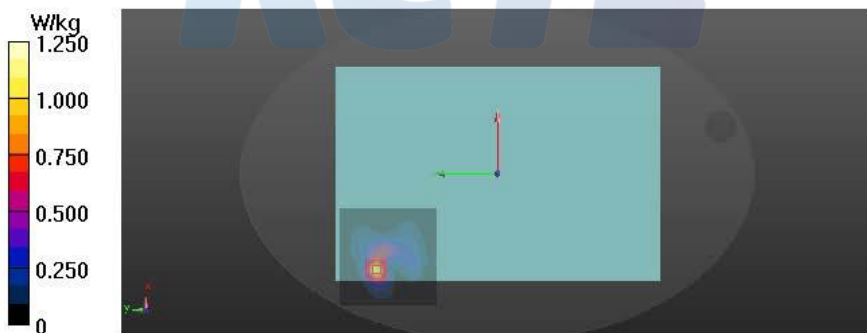
(7x7x12)/Cube 0: Measurement grid: dx=4mm, dy=4mm, dz=2mm

Reference Value = 15.83 V/m; Power Drift = 0.00 dB

Peak SAR (extrapolated) = 2.46 W/kg

SAR(1 g) = 0.639 W/kg; SAR(10 g) = 0.214 W/kg

Maximum value of SAR (measured) = 1.25 W/kg



#6

**Procedure Name: 802.11ac80\_f.5 610\_Notebook Rear\_0 mm\_Ant.1**

Frequency: 5610 MHz; Duty Cycle: 1:1

Medium parameters used:  $f = 5610$  MHz;  $\sigma = 5.865$  S/m;  $\epsilon_r = 47.8$ ;  $\rho = 1000$  kg/m<sup>3</sup>

Phantom section: Flat Section

DASY5 Configuration:

- Probe: EX3DV4 - SN3865; ConvF(3.92, 3.92, 3.92) @ 5610 MHz; Calibrated: 2018-08-29
- Sensor-Surface: 2mm (Mechanical Surface Detection)
- Electronics: DAE4 Sn666; Calibrated: 2018-06-07
- Phantom: ELI V5.0 (20deg probe tilt)\_2\_20180808; Type: QD OVA 002 BB; Serial: 1220
- Measurement SW: DASY52, Version 52.10 (1); SEMCAD X Version 14.6.11 (7439)

**Configuration/802.11ac80\_f.5 610\_Notebook Rear\_0 mm\_Ant.1/Area Scan (111x101x1):**

Interpolated grid: dx=1.000 mm, dy=1.000 mm

Maximum value of SAR (interpolated) = 0.892 W/kg

**Configuration/802.11ac80\_f.5 610\_Notebook Rear\_0 mm\_Ant.1/Zoom Scan**

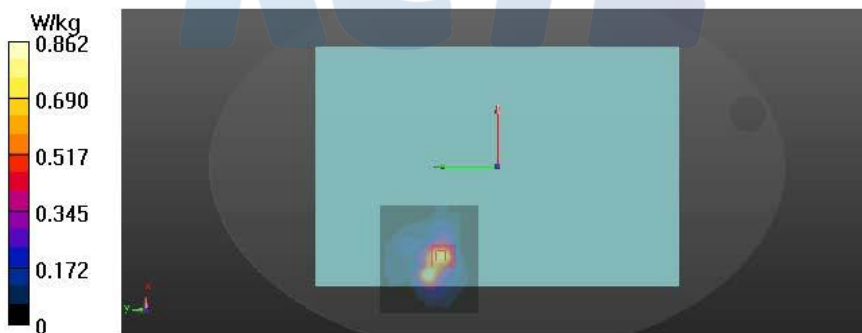
(7x7x12)/Cube 0: Measurement grid: dx=4mm, dy=4mm, dz=2mm

Reference Value = 6.826 V/m; Power Drift = 0.04 dB

Peak SAR (extrapolated) = 2.23 W/kg

SAR(1 g) = 0.471 W/kg; SAR(10 g) = 0.170 W/kg

Maximum value of SAR (measured) = 0.862 W/kg



#7

**Procedure Name: 802.11ac80\_f.5 775\_Notebook Rear\_0 mm\_Ant.0**

Frequency: 5775 MHz; Duty Cycle: 1:1

Medium parameters used:  $f = 5775$  MHz;  $\sigma = 6.123$  S/m;  $\epsilon_r = 47.324$ ;  $\rho = 1000$  kg/m<sup>3</sup>

Phantom section: Flat Section

DASY5 Configuration:

- Probe: EX3DV4 - SN3865; ConvF(4.28, 4.28, 4.28) @ 5775 MHz; Calibrated: 2018-08-29
- Sensor-Surface: 2mm (Mechanical Surface Detection)
- Electronics: DAE4 Sn666; Calibrated: 2018-06-07
- Phantom: ELI V5.0 (20deg probe tilt)\_2\_20180808; Type: QD OVA 002 BB; Serial: 1220
- Measurement SW: DASY52, Version 52.10 (1); SEMCAD X Version 14.6.11 (7439)

**Configuration/802.11ac80\_f.5 775\_Notebook Rear\_0 mm\_Ant.0/Area Scan (111x111x1):**

Interpolated grid: dx=1.000 mm, dy=1.000 mm

Maximum value of SAR (interpolated) = 0.657 W/kg

**Configuration/802.11ac80\_f.5 775\_Notebook Rear\_0 mm\_Ant.0/Zoom Scan**

(7x7x12)/Cube 0: Measurement grid: dx=4mm, dy=4mm, dz=2mm

Reference Value = 11.26 V/m; Power Drift = -0.09 dB

Peak SAR (extrapolated) = 1.33 W/kg

SAR(1 g) = 0.329 W/kg; SAR(10 g) = 0.107 W/kg

Maximum value of SAR (measured) = 0.651 W/kg



#8

**Procedure Name: 802.11ac80\_f.5\_775\_Notebook Rear\_0 mm\_Ant.1**

Frequency: 5775 MHz; Duty Cycle: 1:1

Medium parameters used:  $f = 5775$  MHz;  $\sigma = 6.123$  S/m;  $\epsilon_r = 47.324$ ;  $\rho = 1000$  kg/m<sup>3</sup>

Phantom section: Flat Section

DASY5 Configuration:

- Probe: EX3DV4 - SN3865; ConvF(4.28, 4.28, 4.28) @ 5775 MHz; Calibrated: 2018-08-29
- Sensor-Surface: 2mm (Mechanical Surface Detection)
- Electronics: DAE4 Sn666; Calibrated: 2018-06-07
- Phantom: ELI V5.0 (20deg probe tilt)\_2\_20180808; Type: QD OVA 002 BB; Serial: 1220
- Measurement SW: DASY52, Version 52.10 (1); SEMCAD X Version 14.6.11 (7439)

**Configuration/802.11ac80\_f.5\_775\_Notebook Rear\_0 mm\_Ant.1/Area Scan (111x101x1):**

Interpolated grid: dx=1.000 mm, dy=1.000 mm

Maximum value of SAR (interpolated) = 0.901 W/kg

**Configuration/802.11ac80\_f.5\_775\_Notebook Rear\_0 mm\_Ant.1/Zoom Scan**

(7x7x12)/Cube 0: Measurement grid: dx=4mm, dy=4mm, dz=2mm

Reference Value = 7.080 V/m; Power Drift = 0.09 dB

Peak SAR (extrapolated) = 2.16 W/kg

**SAR(1 g) = 0.456 W/kg; SAR(10 g) = 0.148 W/kg**

Maximum value of SAR (measured) = 0.888 W/kg

