

AT4 wireless, S.A.

Parque Tecnológico de Andalucía,
 c/ Severo Ochoa nº 2
 29590 Campanillas/ Málaga/ España
 Tel. 952 61 91 00 - Fax 952 61 91 13
 MÁLAGA, C.I.F. A29 507 456
 Registro Mercantil de Málaga, Tomo 1169,
 Libro 82, Folio 133, Hoja MA3729

TEST REPORT

REFERENCE STANDARDS:

FCC 47CFR Part 2.1093 (10-1-09 Edition)

FCC OET Bulletin 65, Supplement C (Edition 01-01)

NIE	31338RET.001
Approved by (name / position & signature)	J.C. Soler / Consultant
Elaboration date	2010-04-21
Identification of item tested	Intel® Centrino® Advanced-N 6200 inside a host laptop
Trademark	Intel
Model and/or type reference	622ANHMW / 622ANHU
Serial number	MAC: 0015005F2F9C
Other identification of the product	FCC ID: PD9622ANHU / IC: 1000M-622ANHU
Features	802.11 a/b/g/n
Description	Wireles Module: Intel® Centrino® Advanced-N 6200 Antenna Type: WNC 25.92030.011 and 25.92031.011 Host platform: Lenovo U160
Applicant	Intel Corporation
Address	2111 Ne 25th Avenue JF3-3-G14, Hillsboro, OR 97124, USA
CIF/NIF/Passport	---
Contact person:	Steven C. Hackett (Wireless Regulatory Engineer)
Telephone / Fax	803-216-2344
e-mail:	steven.c.hackett@intel.com
Test samples supplier	Same as applicant
Manufacturer	Same as applicant

Test method requested	See Standard
Standard	<ol style="list-style-type: none"> 1. FCC 47 CFR Part 2.1093 (10-1-09 Edition). Radiofrequency radiation exposure evaluation: portable devices. 2. FCC OET Bulletin 65, Supplement C (Edition 01-01), “Evaluating Compliance with FCC Guidelines for Human Exposure to Radio Frequency Electromagnetic Fields”.
Application Notes	<ol style="list-style-type: none"> 1. FCC OET KDB 248227 – SAR Measurements Procedures 802.11a/b/g Transmitters (May 2007 – Revised). 2. FCC OET KDB 616217 D01 – SAR Evaluation Considerations for Laptop Computers with Antennas Built-in on Display Screens (Updated November 2009). 3. FCC OET KDB 616217 D03 – SAR Evaluation Considerations for Notebook/Netbook and Laptop Computers (November 2009). 4. FCC OET KDB 865664 – SAR Measurements Requirements for 3-6 GHz (October 2006). 5. FCC OET KDB 450824 – SAR Probe Calibration and System Verification Considerations for measurements at 150 MHz – 3 GHz (January 2007).
Test procedure	PERF062
Non-standardized test method	N/A
Used instrumentation	<ol style="list-style-type: none"> 1. Dosimetric E-field probe SPEAG ES3DV3 2. Dosimetric E-field probe SPEAG EX3DV4 3. Data acquisition device SPEAG DAE4 4. Electro-optical converter SPEAG EOC3 5. 2450 MHz dipole validation kit SPEAG D2450V2 6. 5GHz dipole validation kit SPEAG D5GHzV2 7. Robot STÄUBLI RX60BL 8. Robot controller STÄUBLI CM7MB 9. Oval flat phantom SPEAG ELI 4 10. SAR measurement software SPEAG DASY4 V4.7 Build 80 11. Measurement server SPEAG DASY4 SE UMS 001 DC 12. Body Tissue Equivalent Liquids for 2450MHz and 5GHz bands 13. Vector network analyzer Agilent E5071C 14. Dielectric probe kit Agilent 85070C 15. Power meter R&S NRVD 16. Power Sensor R&S NRV-Z51 17. Power Sensor R&S NRV-Z1 18. RF Generator Agilent ESG E4438C 19. Dual directional coupler NARDA FSCM 99899 20. Power amplifier MITEQ AMF-4D-00400600-50-30P 21. Laptop positioning extension SPEAG Laptop Holder
Report template No.	FDT08_11
<p>IMPORTANT: No parts of this report may be reproduced or quoted out of context, in any form or by any means, except in full, without the previous written permission of AT4 wireless.</p>	

INDEX

Competences and guarantees	4
General conditions	4
Uncertainty	4
Usage of samples.....	5
Testing period	5
Environmental conditions	5
Summary	6
Remarks and comments	6
Testing verdicts.....	6
APPENDIX A: Test Configuration.....	8
APPENDIX B: Test results.....	15
APPENDIX C: Measurements Reports	24
APPENDIX D: Calibration Data	43
APPENDIX E: Photographs	59

Competences and guarantees

AT4 wireless is a testing laboratory competent to carry out the tests described in this report.

In order to assure the traceability to other national and international laboratories, AT4 wireless has a calibration and maintenance programme for its measurement equipment.

AT4 wireless guarantees the reliability of the data presented in this report, which is the result of the measurements and the tests performed to the item under test on the date and under the conditions stated on the report and, it is based on the knowledge and technical facilities available at AT4 wireless at the time of performance of the test.

AT4 wireless is liable to the client for the maintenance of the confidentiality of all information related to the item under test and the results of the test.

General conditions

1. This report is only referred to the item that has undergone the test.
2. This report does not constitute or imply on its own an approval of the product by the Certification Bodies or competent Authorities.
3. This document is only valid if complete; no partial reproduction can be made without previous written permission of AT4 wireless.
4. This test report cannot be used partially or in full for publicity and/or promotional purposes without previous written permission of AT4 wireless and the Accreditation Bodies.

Uncertainty

Uncertainty (factor $k=2$) was calculated according to the following documents:

1. FCC OET Bulletin 65, Supplement C (Edition 01-01), "Evaluating Compliance with FCC Guidelines for Human Exposure to Radio Frequency Electromagnetic Fields".
2. FCC OET KDB 865664 – SAR Measurements Requirements for 3-6 GHz (October 2006).

Usage of samples

Samples undergoing test have been selected by: **the client**.

Sample M/01 is composed of the following elements:

<u>Control N°</u>	<u>Description</u>	<u>Model</u>	<u>Serial N°</u>	<u>Date of reception</u>
31338/02	WiFi module inside a Laptop PC	Intel® Centrino® Advanced- N 6200 / Lenovo U160 / WNC Antennas	MAC: 0015005F2F9C	2010-03-17

1. Sample M/01 has undergone the test(s) specified in subclause “Test method requested”.

Testing period

The performed test started on 2010-03-22 and finished on 2009-03-26.

The tests have been performed at AT4 wireless.

Environmental conditions

In the laboratory for measurements, the following limits were not exceeded during the test:

Temperature	Min. = 21.51 °C Max. = 24.40 °C
Relative humidity	Min. = 38.97 % Max. = 61.08 %

Summary

Considering the results of the performed test according to FCC 47CFR Part 2.1093, the item under test is **IN COMPLIANCE** with the requested specifications specified in the standard.

The maximum 1g volume averaged SAR found during this test has been 0.146 W/kg, for the 5600 MHz band and 802.11n with 40MHz BW mode.

NOTE: The results presented in this Test Report apply only to the particular item under test established in page 1 of this document, as presented for test on the date(s) shown in section, "USAGE OF SAMPLES, TESTING PERIOD AND ENVIRONMENTAL CONDITIONS".

Remarks and comments

- 1: 802.11n = 20MHz BW / 802.11n* = 40MHz BW.
- 2: Testing of 802.11g and 802.11n with 20MHz BW are not required due to the testing reductions mentioned in FCC OET KDB 248227 – SAR Measurements Procedures 802.11a/b/g Transmitters (May 2007 – Revised), paragraph "Frequency Channel Configurations".
- 3: Testing of other channels in each band is optional when the maximum output channel SAR fulfills the testing reductions mentioned in FCC OET KDB 248227 – SAR Measurements Procedures 802.11a/b/g Transmitters (May 2007 – Revised), paragraph "Frequency Channel Configurations".

Testing verdicts

Not applicable: NA
 Pass.....: P
 Fail: F
 Not measured.....: NM

2450 MHz band

FCC 47CFR Part 2.1093 Paragraph	VERDICT			
	NA	P	F	NM
(d)(2) 802.11b		P		
(d)(2) 802.11g				NM ²
(d)(2) 802.11n ¹		P		
(d)(2) 802.11n* ¹		P		

1 and 2: See Remarks and Comments.

5.2 – 5.8 GHz band

FCC 47CFR Part 2.1093 Paragraph	VERDICT			
	NA	P	F	NM
Lower Band (5.18 – 5.32 GHz)				
(d)(2) 802.11a		P		
(d)(2) 802.11n ¹				NM ²
(d)(2) 802.11n* ¹		P		
Middle Band (5.5 – 5.7 GHz)				
(d)(2) 802.11a		P		
(d)(2) 802.11n ¹				NM ²
(d)(2) 802.11n* ¹		P		
Higher Band (5.745 – 5.825 GHz)				
(d)(2) 802.11a		P		
(d)(2) 802.11n ¹				NM ²
(d)(2) 802.11n* ¹		P		

1 and 2: See Remarks and Comments.

APPENDIX A: Test Configuration

INDEX

1. GENERAL INTRODUCTION	10
1.1. Application Standard.....	10
1.2. General requirements	10
1.3. Measurement system and phantom requirements	10
1.4. Measurement Liquids requirements.	10
2. MEASUREMENT SYSTEM.....	11
2.1. Measurement System.....	11
2.2. Test Positions of device relative to body.....	12
2.3. Test to be performed	12
2.4. Description of interpolation/extrapolation scheme.....	12
2.5. Determination of the largest peak spatial-average SAR.....	12
2.6. System Validation	13
3. UNCERTAINTY	13
4. SAR LIMIT	14

1. GENERAL INTRODUCTION

1.1. Application Standard

The Federal Communications Commission (FCC) sets the limits for General Population / Uncontrolled exposure to radio frequency electromagnetic fields for transmitting devices designed to be used within 20 centimetres of the user body under FCC 47 CFR Part 2.1093 - "Radiofrequency radiation exposure evaluation: portable devices", paragraph (d)(2).

Specific requirements and procedure for SAR assessment are describe under FCC OET Bulletin 65, Supplement C (Edition 01-01), "Evaluating Compliance with FCC Guidelines for Human Exposure to Radio Frequency Electromagnetic Fields", and all the FCC OET Knowledge Database documents referred at the beginning of this document.

1.2. General requirements

The SAR measurement has been performed continuing the following considerations and environment conditions:

- The ambient temperature shall be in the range of 18°C to 25°C and the variation shall not exceed +/-2°C during the test.
- The ambient humidity shall be in the range of and 30% - 70%.
- The device battery shall be fully charged before each measurement.

1.3. Measurement system and phantom requirements

The measurement system used for SAR tests fulfils the procedural and technical requirements described at the reference standards used.

The phantom is a simplified representation of the human anatomy and comprised of material with electrical properties similar to the corresponding tissues in human body.

1.4. Measurement Liquids requirements.

The liquids used to simulate the human tissues, must fulfils the requirements of the dielectric properties required. These target dielectric properties per FCC OET KDB 450824 instructions come from the dipole and probe calibration data which are included in Appendix B, Section 2, of this document (the values for 5200 and 5600 MHz are linearly interpolated between the specified values for 3000 and 5800 MHz indicated in FCC OET Bulletin 65 – Supplement C, Appendix C, 'Tissue Dielectric Parameters').

As indicated in FCC OET KDB 450824, it is allowed a 5% variation of the above mentioned level at the 2450 MHz band. As indicated in FCC OET KDB 865664 – 'Measurements Requirements for 3-6 GHz', it is allowed a 10% and a 5% variation of permittivity and conductivity respectively at the 5200-5800 GHz band.

2. MEASUREMENT SYSTEM

2.1. Measurement System

Manufacturer	Device	Type
Schmid & Partner Engineering AG	Dosimetric E-Fiel Probe	ES3DV3
Schmid & Partner Engineering AG	Dosimetric E-Fiel Probe	EX3DV4
Schmid & Partner Engineering AG	Data Acquisition Electronics	DAE4
Schmid & Partner Engineering AG	Electro-Optical Converter	EOC5
Schmid & Partner Engineering AG	2450 MHz System Validation Dipole	D2450V2
Schmid & Partner Engineering AG	5GHz System Validation Dipole	D5GHzV2
Stäubli	Robot	RX60BL
Stäubli	Robot controller	CM7MB
Schmid & Partner Engineering AG	Oval flat phantom	ELI 4
Schmid & Partner Engineering AG	Measurement Software	DASY V4.7 Build 80
Schmid & Partner Engineering AG	Measurement Server	DASY4 SE UMS 001 DC
Agilent	Vector Network Analyser	E5071C
Agilent	Dielectric Probe Kit	85070C
Rohde & Schwarz	Power Meter	NRVD
Rohde & Schwarz	Power Sensor	NRV-Z51
Rohde & Schwarz	Power Sensor	NRV-Z1
Agilent	RF Generator	ESG E4438C
NARDA	Dual directional coupler	FSCM 99899
MITEQ	Power amplifier	AMF-4D-00400600-50-30P
Schmid & Partner Engineering AG	Laptop Holder	SM LH1 001 AC

Table 1: Measurement Equipment

2.2. Test Positions of device relative to body

Following the FCC OET KDB 447498 – Mobile and Portable Device RF Exposure Procedures and Equipment Authorization Policies (November 2009), the tablet device was tested in two positions for all tests, using the tablet configuration: one with the bottom face placed directly against the phantom, and one with the edge where the antennas are located placed directly against the phantom. Further analysis was performed to determine the location which showed the highest SAR.

The antennas on the laptop are located within the top edge of the screen. According to FCC OET Bulletin 65 – Supplement C, the antennas which would be applied in the test are antennas or radiating structures in direct contact with the user's body within 20 centimetres of the body of a user under normal operating conditions. According to this, the laptop configuration (display at 90° from the keyboard), was not tested because it places the antennas away from the body more than 20 centimetres.

2.3. Test to be performed

In all operating modes and bands the measurements have to be performed on the “default test channels” defined at FCC OET KDB 248227 – SAR Measurements Procedures 802.11a/b/g Transmitters (May 2007 – Revised), except those channels defined as “required test channels” at the same document.

2.4. Description of interpolation/extrapolation scheme

The local SAR inside the Phantom is measured using small dipole sensing elements inside a probe element. The probe tip must not be in contact with the Phantom's surface in order to minimise measurement errors, but the highest local SAR is obtained from measurements at a certain distance from the shell through extrapolation. The accurate assessment of the maximum SAR averaged over 1 gr. requires a very fine resolution in the three dimensional scanned data array. Since the measurements have to be performed over a limited time, the measured data have to be interpolated to provide an array of sufficient resolution.

The interpolation of 2D area scan is used after the initial area scan, at a fixed distance from the Phantom shell wall. The initial scan data is collected with a proper spatial resolution and this interpolation is used to find the location of the local maximum for positioning the subsequent 3D scanning to within a 1mm resolution.

For the 3D scan, data is collected on a spatially regular 3D grid having 5mm steps in both lateral directions, and 5mm in depth direction for the 2450MHz band. Over the 5GHz band, a 4mm lateral resolution is required, and 2.5mm in depth direction. After the data collection by the SAR probe, the data are extrapolated in the depth direction to assign values to points in the 3D array closer to the shell wall. A notional extrapolation value is also assigned to the first point outside the shell wall so that subsequent interpolation schemes will be applicable right up to the shell wall boundary.

2.5. Determination of the largest peak spatial-average SAR

To determine the maximum value of the peak spatial-average SAR of a EUT, all device positions, configurations and operational modes should be tested for each frequency band.

According to FCC 47 CFR Part 2.1093, the averaging volume shall be chosen as 1 g of contiguous tissue. The cubic volumes, over which the SAR measurements are averaged after extrapolation and interpolation, are chosen in order to include the highest values of local SAR.

The maximum SAR level for the EUT will be the maximum level obtained of the performed measurements, and indicated in the previous points.

2.6. System Validation

Prior to the SAR measurements, system verification is done daily to verify the system accuracy. As FCC OET Bulletin 65 – Supplement C, Appendix D “SAR measurement procedures” Paragraph “System Verification” specifies, a complete SAR evaluation is done using a half-wavelength dipole as source with the frequency of the mid-band channel of the operating band, or within 100MHz of this channel.

The measured one-gram SAR should be within 10% of the expected target values specified in the calibration certificate of the dipole, for the specific tissue and frequency used.

3. UNCERTAINTY

Uncertainty for 300 MHz – 6 GHz

ERROR SOURCES	Uncertainty value (%)	Probability distribution	Divisor	(c _i) 1g	(c _i) 10g	Standard uncertainty (1g) (%)	Standard uncertainty (10g) (%)	V _i V _{eff}
Measurement Equipment								
Probe Calibration	±4.480	Normal	1	1	1	±4.480	±4.480	∞
Axial Isotropy	±7.558	Rectangular	√3	1	1	±4.364	±4.364	∞
Hemispherical Isotropy	±2.000	Rectangular	√3	1	1	±1.155	±1.155	∞
Boundary effect	±4.700	Rectangular	√3	1	1	±2.714	±2.714	∞
Linearity	±1.000	Rectangular	√3	1	1	±0.577	±0.577	∞
System detection limits	±0.300	Rectangular	√3	1	1	±0.300	±0.300	∞
Readout electronics	±1.010	Normal	1	1	1	±0.583	±0.583	∞
Response time	±2.600	Rectangular	√3	1	1	±1.501	±1.501	∞
Integration time	±3.000	Rectangular	√3	1	1	±1.732	±1.732	∞
RF Ambient conditions	±3.000	Rectangular	√3	1	1	±1.732	±1.732	∞
Probe positioner	±0.800	Rectangular	√3	1	1	±0.462	±0.462	∞
Probe positioning	±9.900	Rectangular	√3	1	1	±5.716	±5.716	∞
Maximum SAR evaluation	±1.000	Rectangular	√3	1	1	±0.577	±0.577	∞
Test Sample Related								
Device positioning	±2.900	Normal	1	1	1	±2.900	±2.900	145
Device Holder	±3.600	Normal	1	1	1	±3.600	±3.600	5
Power Drift	±5.000	Rectangular	√3	1	1	±2.887	±2.887	∞
Phantom and Setup								
Phantom uncertainty	±4.000	Rectangular	√3	1	1	±2.309	±2.309	∞
Liquid conductivity (deviation from target)	±5.000	Rectangular	√3	0.64	0.43	±1.848	±1.241	∞
Liquid conductivity (measurement error)	±3.100	Normal	1	0.64	0.43	±1.984	±1.333	∞
Liquid permittivity (deviation from target)	±5.000	Rectangular	√3	0.64	0.43	±1.848	±1.241	∞
Liquid permittivity (measurement error)	±4.410	Normal	1	0.64	0.43	±2.822	±1.896	∞
Combined standard uncertainty	$u_c = \sqrt{\sum_{i=1}^m c_i^2 \cdot u_i^2}$					±11.99	±11.56	330
Expanded uncertainty (confidence interval of 95%)	$ue = 2.00 u_c$					±23.98	±23.11	

Table 2: Uncertainty Assessment for 300 MHz - 6 GHz

4. SAR LIMIT

Having a worst case measurement, the SAR limit is valid for general population/uncontrolled exposure.

The SAR values have to be averaged over a mass of 1 gr. (SAR_{1 gr.}) with the shape of a cube. This level couldn't exceed the values indicated in the application Standard:

Standard	SAR	SAR Limit (W/Kg)
FCC 47 CFR Part 2.1093 Paragraph (d)(2)	SAR _{1 gr.}	1.6

Table 3: SAR limit

APPENDIX B: Test results

INDEX

1.	TEST CONDITIONS	17
1.1.	Power supply (V):.....	17
1.2.	Temperature (°C):.....	17
1.3.	Test signal, Output Power and Frequencies.....	17
1.4.	DUT information	17
2.	TISSUE PARAMETERS MEASUREMENTS.....	18
3.	SYSTEM VALIDATION MEASUREMENTS	18
3.1.	Validation results in 2450 MHz Band for Body TSL.....	18
3.2.	Validation results in 5200 MHz Band for Body TSL.....	18
3.3.	Validation results in 5500 MHz Band for Body TSL.....	18
3.4.	Validation results in 5800 MHz Band for Body TSL.....	18
4.	MEASUREMENT RESULTS FOR SAR (SPECIFIC ABSORPTION RATE)	19
4.1.	Summary maximum results.....	19
4.2.	Results for 2450 MHz Band.....	20
4.3.	Results for 5200 MHz Band.....	21
4.4.	Results for 5600 MHz Band.....	22
4.5.	Results for 5800 MHz Band.....	23

1. TEST CONDITIONS

1.1. Power supply (V):

$V_n = 11.1$ Vdc battery

Type of power supply = DC Voltage from rechargeable Li-Ion 11.1 V battery.

1.2. Temperature (°C):

$T_n = +21.51$ to $+24.4$

The subscript n indicates normal test conditions.

1.3. Test signal, Output Power and Frequencies

The device was put into operation by using an own control software to program the test mode required for select the continuous transmission with 100% duty cycle.

In all operating bands the measurements were performed on the “default test channels” defined at FCC OET KDB 248227 – SAR Measurements Procedures 802.11a/b/g Transmitters (May 2007 – Revised), except those that fulfil the frequency channel selection criteria mentioned on paragraph “Frequency Channel Configuration” at the same document.

The output power of the device was set to maximum power level for all tests; a fully charged battery was used for every test sequence.

The maximum average conducted power of the device was measured with a Power meter R&S NRVD and a thermocoupled Power sensor NRV-Z51.

1.4. DUT information

The device under test was the Intel® Centrino® Advanced-N 6200 card located inside a host laptop (Lenovo U160) computer which utilises a set of WNC antennas (25.92030.011 and 25.92031.011). The card was operated utilizing proprietary software (CRTU Version 5.15.36.0) and each channel was measured using a broadband power meter to determine the maximum average power.

The simultaneous transmission testing for the WLAN antennas is not required due to testing reductions mentioned in FCC OET KDB 616217 D01 – SAR Evaluation Considerations for Laptop Computers with Antennas Built-in on Display Screens (Updated November 2009), paragraph “Simultaneous Transmission”.

Collocation with WWAN transmitter has not been considered following grantee request because this collocation will be considered in the WWAN transmitter SAR testing.

2. TISSUE PARAMETERS MEASUREMENTS

Frequency (MHz)	Target Body Tissue: Parameters used in Probe Calibration		Target Body Tissue: Parameters used in Dipole Calibration		Measured Body Tissue		Measured Date
	Permittivity	Conductivity [S/m]	Permittivity	Conductivity [S/m]	Permittivity	Conductivity [S/m]	
2450	52.7 ± 5%	1.95 ± 5%	53.2 ± 6%	2.00 ± 6%	50.21	1.99	2010-03-25
5200	49.0 ± 5%	5.30 ± 5%	47.7 ± 6%	5.30 ± 6%	45.61	5.04	2010-03-22
5500	48.5 ± 5%	5.77 ± 5%	46.8 ± 6%	5.74 ± 6%	44.87	5.51	2010-03-22
5800	48.2 ± 5%	6.00 ± 5%	46.3 ± 6%	6.05 ± 6%	44.22	5.92	2010-03-22

Note: The dielectric properties have been measured by the contact probe method at 22.5° C.

3. SYSTEM VALIDATION MEASUREMENTS

3.1. Validation results in 2450 MHz Band for Body TSL

SAR	Target SAR (W/kg)	Measured SAR (W/kg)	Drift (%)	Limit (%)
1 gr.	53,00	51,73	-2,39	± 10
10 gr.	25,00	23,86	-4,55	± 10

3.2. Validation results in 5200 MHz Band for Body TSL

SAR	Target SAR	Measured SAR	Drift (%)	Limit (%)
1 gr.	75,70	73,26	-3,23	± 10
10 gr.	21,10	20,64	-2,16	± 10

3.3. Validation results in 5500 MHz Band for Body TSL

SAR	Target SAR	Measured SAR	Drift (%)	Limit (%)
1 gr.	81,10	83,67	3,17	± 10
10 gr.	22,40	23,13	3,26	± 10

3.4. Validation results in 5800 MHz Band for Body TSL

SAR	Target SAR	Measured SAR	Drift (%)	Limit (%)
1 gr.	71,90	73,14	1,73	± 10
10 gr.	19,70	20,37	3,39	± 10

4. MEASUREMENT RESULTS FOR SAR (SPECIFIC ABSORPTION RATE)

4.1. Summary maximum results

2450 MHz band:

Band	Chain	Mode	Channel	Frequency (MHz)	Measured SAR, value (1g avg) (W/Kg)	SAR limit (1g avg) (W/Kg)
2450 MHz band	A	802.11b	1	2412	0.003	1.6
	-	802.11g	-	-	NM ²	1.6
	B	802.11n ¹	6	2437	0.004	1.6
	B	802.11n* ¹	6	2437	0.005	1.6

1 and 2: See Remarks and Comments.

5.2 – 5.8 GHz band:

Band	Chain	Mode	Channel	Frequency (MHz)	Measured SAR, value (1g avg) (W/Kg)	SAR limit (1g avg) (W/Kg)
Lower Band (5.18 – 5.32 GHz)	B	802.11a	48	5240	0.112	1.6
	-	802.11n ¹	-	-	NM ²	1.6
	B	802.11n* ¹	62	6310	0.142	1.6
Middle Band (5.5 – 5.7 GHz)	A	802.11a	120	5600	0.075	1.6
	-	802.11n ¹	-	-	NM ²	1.6
	B	802.11n* ¹	102	5510	0.146	1.6
Higher Band (5.745 – 5.825 GHz)	B	802.11a	165	5825	0.053	1.6
	-	802.11n ¹	-	-	NM ²	1.6
	B	802.11n* ¹	159	5795	0.080	1.6

1 and 2: See Remarks and Comments.

4.2. Results for 2450 MHz Band

Chain A

Mode	Channel	Frequency (MHz)	Conducted Power (dBm)	SAR averaged over 1g (W/Kg)	Power Drift (%)	Limit (%)
802.11b	1	2412	16,64	0.003	0.88	±5
	6	2437	16,25	NM ³	-	±5
	11	2462	16,57	NM ³	-	±5
802.11g	1	2412	15,16	NM ²	-	±5
	6	2437	16,65	NM ²	-	±5
	11	2462	15,56	NM ²	-	±5
802.11n ¹	1	2417	14,66	NM ³	-	±5
	6	2437	16,47	0.003	-3.46	±5
	11	2457	14,21	NM ³	-	±5
802.11n* ¹	4	2427	13,77	NM ³	-	±5
	6	2437	16,55	0.003	-1.32	±5
	8	2447	13,46	NM ³	-	±5

Chain B

Mode	Channel	Frequency (MHz)	Conducted Power (dBm)	SAR averaged over 1g (W/Kg)	Power Drift (%)	Limit (%)
802.11b	1	2412	16,64	0.003	-1.21	±5
	6	2437	16,31	NM ³	-	±5
	11	2462	16,72	NM ³	-	±5
802.11g	1	2412	15,58	NM ²	-	±5
	6	2437	16,68	NM ²	-	±5
	11	2462	15,59	NM ²	-	±5
802.11n ¹	1	2417	14,58	NM ³	-	±5
	6	2437	16,52	0.004	-3.78	±5
	11	2457	14,23	NM ³	-	±5
802.11n* ¹	4	2427	13,72	NM ³	-	±5
	6	2437	16,60	0.005	-1.49	±5
	8	2447	13,78	NM ³	-	±5

1, 2 and 3: See Remarks and Comments.

4.3. Results for 5200 MHz Band

Chain A

Mode	Channel	Frequency (MHz)	Conducted Power (dBm)	SAR averaged over 1g (W/Kg)	Power Drift (%)	Limit (%)
802.11a	36	5180	16,39	NM ³	-	±5
	48	5240	16,31	NM ³	-	±5
	52	5260	16,66	0.083	-1.41	±5
	64	5320	16,64	NM ³	-	±5
802.11n ¹	36	5180	NM ²	NM ²	-	±5
	48	5240	NM ²	NM ²	-	±5
	52	5260	NM ²	NM ²	-	±5
	64	5320	NM ²	NM ²	-	±5
802.11n* ¹	38	5190	16,70	0.039	-1.70	±5
	46	5230	16,59	NM ³	-	±5
	54	5270	16,63	NM ³	-	±5
	62	5310	16,65	NM ³	-	±5

Chain B

Mode	Channel	Frequency (MHz)	Conducted Power (dBm)	SAR averaged over 1g (W/Kg)	Power Drift (%)	Limit (%)
802.11a	36	5180	16,47	NM ³	-	±5
	48	5240	16,73	0.112	-1.09	±5
	52	5260	16,48	NM ³	-	±5
	64	5320	16,52	NM ³	-	±5
802.11n ¹	36	5180	NM ²	NM ²	-	±5
	48	5240	NM ²	NM ²	-	±5
	52	5260	NM ²	NM ²	-	±5
	64	5320	NM ²	NM ²	-	±5
802.11n* ¹	38	5190	16,57	NM ³	-	±5
	46	5230	16,44	NM ³	-	±5
	54	5270	16,77	NM ³	-	±5
	62	5310	16,82	0.142	1.74	±5

1, 2 and 3: See Remarks and Comments.

4.4. Results for 5600 MHz Band

Chain A

Mode	Channel	Frequency (MHz)	Conducted Power (dBm)	SAR averaged over 1g (W/Kg)	Power Drift (%)	Limit (%)
802.11a	100	5500	16,40	NM ³	-	±5
	120	5600	16,57	0.075	-2.01	±5
	140	5700	16,42	NM ³	-	±5
802.11n ¹	100	5500	NM ²	NM ²	-	±5
	120	5600	NM ²	NM ²	-	±5
	140	5700	NM ²	NM ²	-	±5
802.11n* ¹	102	5510	16,57	0.050	-0.49	±5
	118	5590	16,50	NM ³	-	±5
	134	5670	16,18	NM ³	-	±5

Chain B

Mode	Channel	Frequency (MHz)	Conducted Power (dBm)	SAR averaged over 1g (W/Kg)	Power Drift (%)	Limit (%)
802.11a	100	5500	16,53	NM ³	-	±5
	120	5600	16,48	NM ³	-	±5
	140	5700	16,70	0.049	3.90	±5
802.11n ¹	100	5500	NM ²	NM ²	-	±5
	120	5600	NM ²	NM ²	-	±5
	140	5700	NM ²	NM ²	-	±5
802.11n* ¹	102	5510	16,73	0.146	-2.23	±5
	118	5590	16,39	NM ³	-	±5
	134	5670	16,46	NM ³	-	±5

1, 2 and 3: See Remarks and Comments.

4.5. Results for 5800 MHz Band

Chain A

Mode	Channel	Frequency (MHz)	Conducted Power (dBm)	SAR averaged over 1g (W/Kg)	Power Drift (%)	Limit (%)
802.11a	149	5745	16,73	NM ³	-	±5
	157	5785	16,76	0.037	4.64	±5
	165	5825	16,50	NM ³	-	±5
802.11n ¹	149	5745	NM ²	NM ²	-	±5
	157	5785	NM ²	NM ²	-	±5
	165	5825	NM ²	NM ²	-	±5
802.11n* ¹	151	5755	16,68	0.061	1.23	±5
	159	5795	16,40	NM ³	-	±5

Chain B

Mode	Channel	Frequency (MHz)	Conducted Power (dBm)	SAR averaged over 1g (W/Kg)	Power Drift (%)	Limit (%)
802.11a	149	5745	16,55	NM ³	-	±5
	157	5785	16,57	NM ³	-	±5
	165	5825	16,65	0.053	-2.83	±5
802.11n ¹	149	5745	NM ²	NM ²	-	±5
	157	5785	NM ²	NM ²	-	±5
	165	5825	NM ²	NM ²	-	±5
802.11n* ¹	151	5755	16,59	NM ³	-	±5
	159	5795	16,66	0.080	1.82	±5

1, 2 and 3: See Remarks and Comments.

APPENDIX C: Measurements Reports

2450 MHz Band – 802.11b, Channel 1 – Chain A

DUT: U160 + Intel 622ANHMW + WNC Antennas; Type: Laptop; Serial: ---
Program Name: 802.11b at 2450MHz

Communication System: 802.11; Frequency: 2412 MHz; Duty Cycle: 1:1
 Medium parameters used (interpolated): $f = 2412$ MHz; $\sigma = 1.95$ mho/m; $\epsilon_r = 50.4$; $\rho = 1000$ kg/m³
 Phantom section: Flat Section

DASY4 Configuration:

- Probe: ES3DV3 - SN3052; ConvF(4.06, 4.06, 4.06); Calibrated: 27/10/2009
- Sensor-Surface: 4mm (Mechanical Surface Detection)
- Electronics: DAE4 Sn669; Calibrated: 26/10/2009
- Phantom: Flat Phantom ELI4.0; Type: QDOVA001BA; Serial: SN:1060
- Measurement SW: DASY4, V4.7 Build 80; Postprocessing SW: SEMCAD, V1.8 Build 186

Chain A, 802.11b, Channel 1/Zoom Scan (7x7x7)/Cube 0: Measurement grid: dx=5mm, dy=5mm, dz=5mm

Reference Value = 1.17 V/m; Power Drift = 0.076 dB

Peak SAR (extrapolated) = 0.011 W/kg

SAR(1 g) = 0.00291 mW/g; SAR(10 g) = 0.000843 mW/g

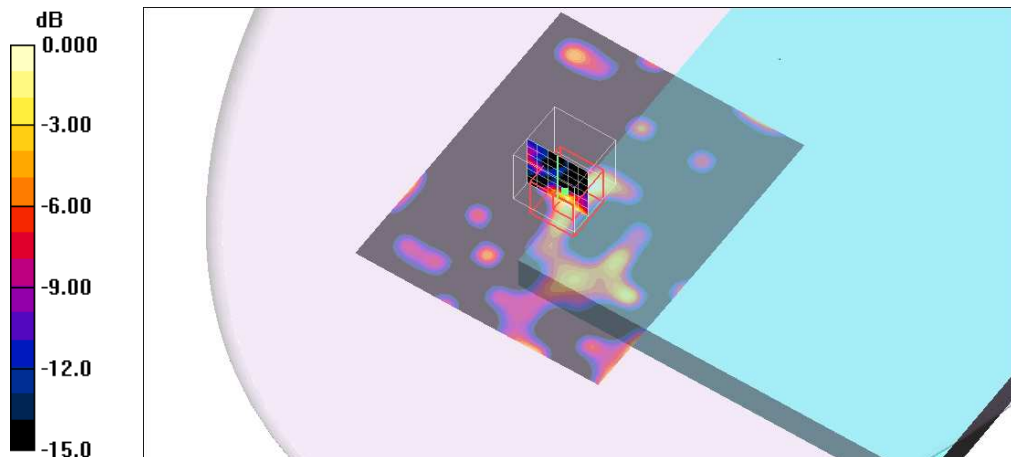
[Info: Interpolated medium parameters used for SAR evaluation.](#)

Maximum value of SAR (measured) = 0.004 mW/g

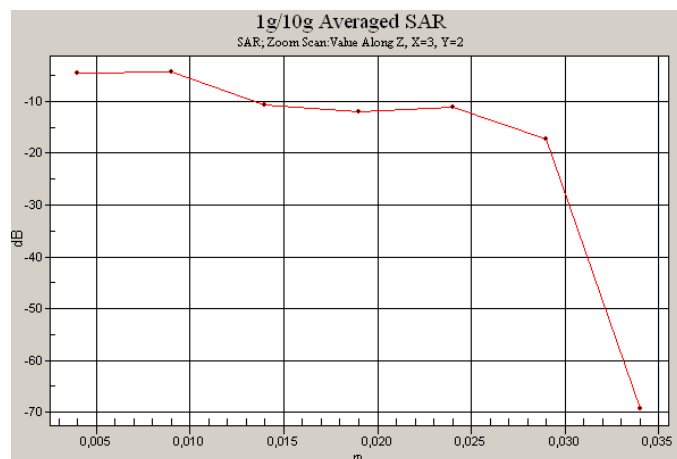
Chain A, 802.11b, Channel 1/Area Scan (81x101x1): Measurement grid: dx=15mm, dy=15mm

[Info: Interpolated medium parameters used for SAR evaluation.](#)

Maximum value of SAR (interpolated) = 0.004 mW/g



0 dB = 0.004mW/g



2450 MHz Band – 802.11n Channel 6 – Chain A

DUT: U160 + Intel 622ANHMW + WNC Antennas; Type: Laptop; Serial: ---
Program Name: 802.11n at 2450MHz

Communication System: 802.11; Frequency: 2437 MHz; Duty Cycle: 1:1
 Medium parameters used (interpolated): $f = 2437$ MHz; $\sigma = 1.98$ mho/m; $\epsilon_r = 50.3$; $\rho = 1000$ kg/m³
 Phantom section: Flat Section

DASY4 Configuration:

- Probe: ES3DV3 - SN3052; ConvF(4.06, 4.06, 4.06); Calibrated: 27/10/2009
- Sensor-Surface: 4mm (Mechanical Surface Detection)
- Electronics: DAE4 Sn669; Calibrated: 26/10/2009
- Phantom: Flat Phantom ELI4.0; Type: QDOVA001BA; Serial: SN:1060
- Measurement SW: DASY4, V4.7 Build 80; Postprocessing SW: SEMCAD, V1.8 Build 186

Chain A, 802.11n, Channel 6/Zoom Scan (7x7x7)/Cube 0: Measurement grid: dx=5mm, dy=5mm, dz=5mm

Reference Value = 1.12 V/m; Power Drift = -0.306 dB

Peak SAR (extrapolated) = 0.011 W/kg

SAR(1 g) = 0.003 mW/g; SAR(10 g) = 0.00104 mW/g

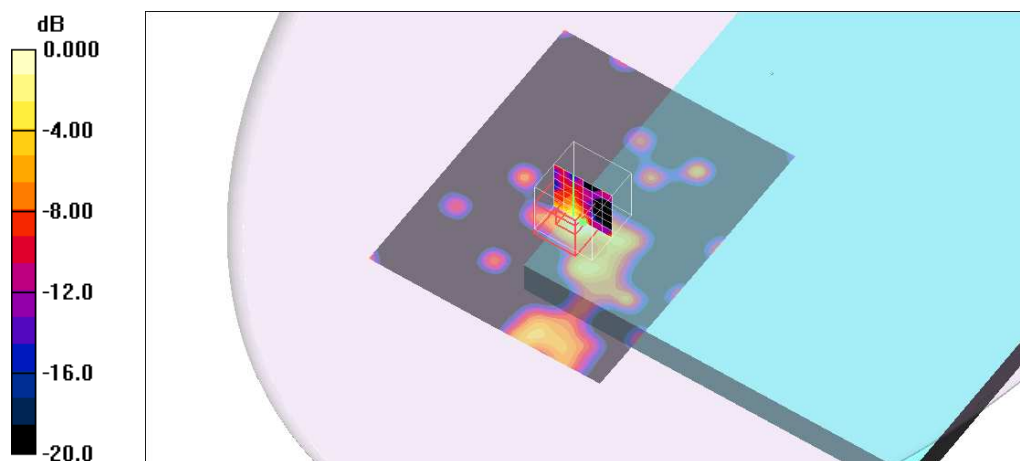
[Info: Interpolated medium parameters used for SAR evaluation.](#)

Maximum value of SAR (measured) = 0.004 mW/g

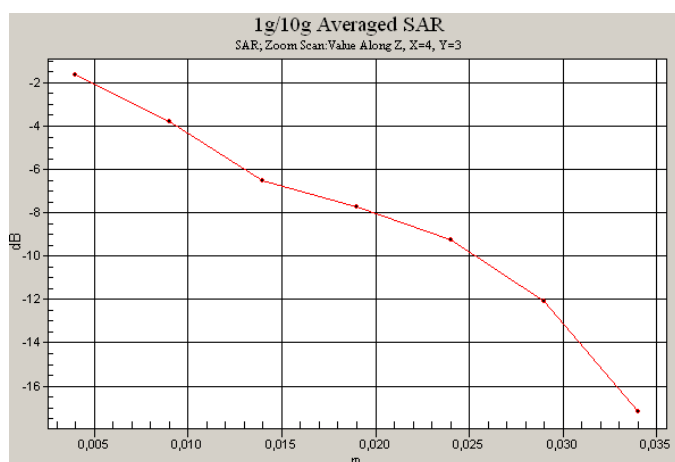
Chain A, 802.11n, Channel 6/Area Scan (81x101x1): Measurement grid: dx=15mm, dy=15mm

[Info: Interpolated medium parameters used for SAR evaluation.](#)

Maximum value of SAR (interpolated) = 0.006 mW/g



0 dB = 0.006mW/g



2450 MHz Band – 802.11n* Channel 6 – Chain A

DUT: U160 + Intel 622ANHMW + WNC Antennas; Type: Laptop; Serial: ---
Program Name: 802.11n* at 2450MHz

Communication System: 802.11; Frequency: 2437 MHz; Duty Cycle: 1:1
 Medium parameters used (interpolated): $f = 2437$ MHz; $\sigma = 1.98$ mho/m; $\epsilon_r = 50.3$; $\rho = 1000$ kg/m³
 Phantom section: Flat Section

DASY4 Configuration:

- Probe: ES3DV3 - SN3052; ConvF(4.06, 4.06, 4.06); Calibrated: 27/10/2009
- Sensor-Surface: 4mm (Mechanical Surface Detection)
- Electronics: DAE4 Sn669; Calibrated: 26/10/2009
- Phantom: Flat Phantom ELI4.0; Type: QDOVA001BA; Serial: SN:1060
- Measurement SW: DASY4, V4.7 Build 80; Postprocessing SW: SEMCAD, V1.8 Build 186

Chain A, 802.11n*, Channel 6/Zoom Scan (7x7x7)/Cube 0: Measurement grid: dx=5mm, dy=5mm, dz=5mm

Reference Value = 1.09 V/m; Power Drift = -0.115 dB

Peak SAR (extrapolated) = 0.009 W/kg

SAR(1 g) = 0.0026 mW/g; SAR(10 g) = 0.000759 mW/g

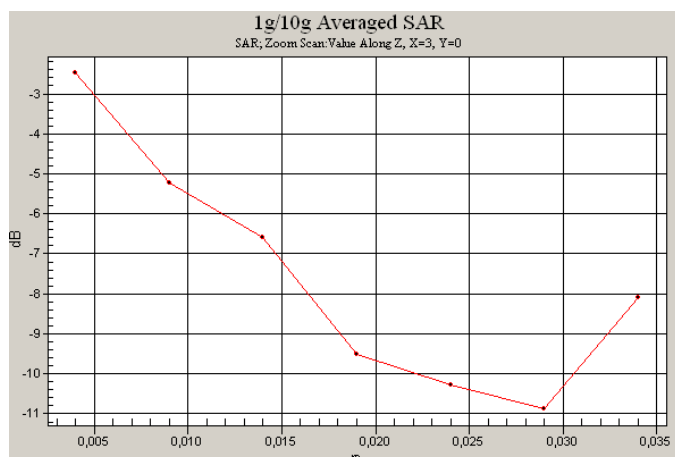
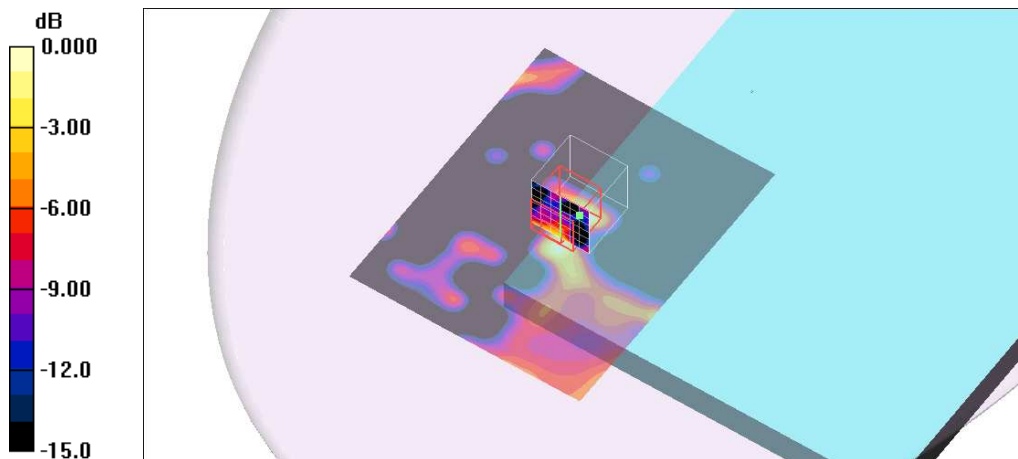
[Info: Interpolated medium parameters used for SAR evaluation.](#)

Maximum value of SAR (measured) = 0.003 mW/g

Chain A, 802.11n*, Channel 6/Area Scan (81x101x1): Measurement grid: dx=15mm, dy=15mm

[Info: Interpolated medium parameters used for SAR evaluation.](#)

Maximum value of SAR (interpolated) = 0.006 mW/g



2450 MHz Band – 802.11b Channel 11 – Chain B

DUT: U160 + Intel 622ANHMW + WNC Antennas; Type: Laptop; Serial: ---
Program Name: 802.11b at 2450MHz

Communication System: 802.11; Frequency: 2462 MHz; Duty Cycle: 1:1
 Medium parameters used (interpolated): $f = 2462$ MHz; $\sigma = 2.01$ mho/m; $\epsilon_r = 50.1$; $\rho = 1000$ kg/m³
 Phantom section: Flat Section

DASY4 Configuration:

- Probe: ES3DV3 - SN3052; ConvF(4.06, 4.06, 4.06); Calibrated: 27/10/2009
- Sensor-Surface: 4mm (Mechanical Surface Detection)
- Electronics: DAE4 Sn669; Calibrated: 26/10/2009
- Phantom: Flat Phantom ELI4.0; Type: QDOVA001BA; Serial: SN:1060
- Measurement SW: DASY4, V4.7 Build 80; Postprocessing SW: SEMCAD, V1.8 Build 186

Chain B, 802.11b, Channel 11/Zoom Scan (7x7x7)/Cube 0: Measurement grid: dx=5mm, dy=5mm, dz=5mm

Reference Value = 0.944 V/m; Power Drift = -0.106 dB

Peak SAR (extrapolated) = 0.006 W/kg

SAR(1 g) = 0.00257 mW/g; SAR(10 g) = 0.00199 mW/g

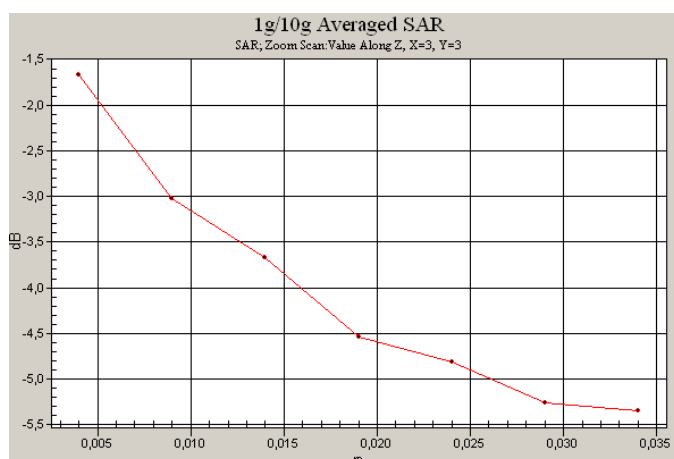
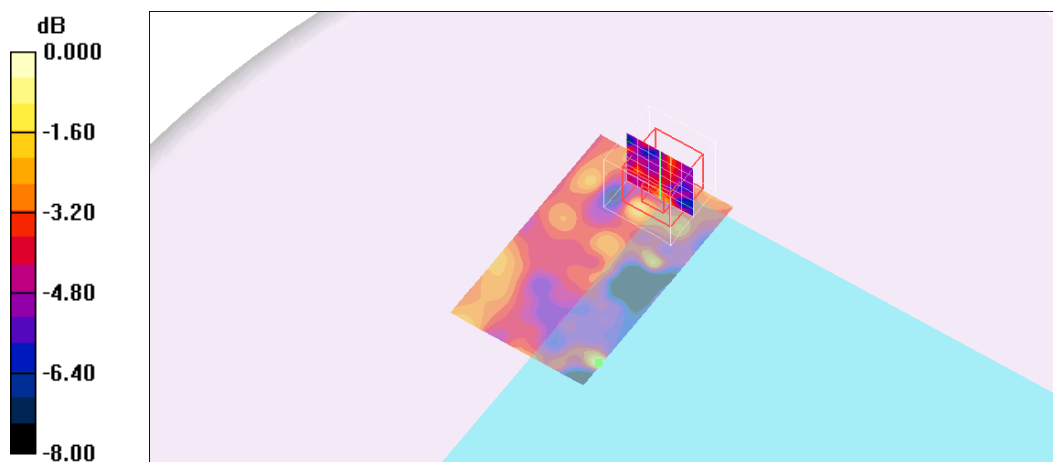
[Info: Interpolated medium parameters used for SAR evaluation.](#)

Maximum value of SAR (measured) = 0.003 mW/g

Chain B, 802.11b, Channel 11/Area Scan (61x101x1): Measurement grid: dx=10mm, dy=10mm

[Info: Interpolated medium parameters used for SAR evaluation.](#)

Maximum value of SAR (interpolated) = 0.005 mW/g



2450 MHz Band – 802.11n Channel 6 – Chain B

DUT: U160 + Intel 622ANHMW + WNC Antennas; Type: Laptop; Serial: ---
Program Name: 802.11n at 2450MHz

Communication System: 802.11; Frequency: 2437 MHz; Duty Cycle: 1:1
 Medium parameters used (interpolated): $f = 2437$ MHz; $\sigma = 1.98$ mho/m; $\epsilon_r = 50.3$; $\rho = 1000$ kg/m³
 Phantom section: Flat Section

DASY4 Configuration:

- Probe: ES3DV3 - SN3052; ConvF(4.06, 4.06, 4.06); Calibrated: 27/10/2009
- Sensor-Surface: 4mm (Mechanical Surface Detection)
- Electronics: DAE4 Sn669; Calibrated: 26/10/2009
- Phantom: Flat Phantom ELI4.0; Type: QDOVA001BA; Serial: SN:1060
- Measurement SW: DASY4, V4.7 Build 80; Postprocessing SW: SEMCAD, V1.8 Build 186

Chain B, 802.11n, Channel 6/Zoom Scan (7x7x7)/Cube 0: Measurement grid: dx=5mm, dy=5mm, dz=5mm

Reference Value = 1.52 V/m; Power Drift = -0.335 dB

Peak SAR (extrapolated) = 0.008 W/kg

SAR(1 g) = 0.00417 mW/g; SAR(10 g) = 0.00359 mW/g

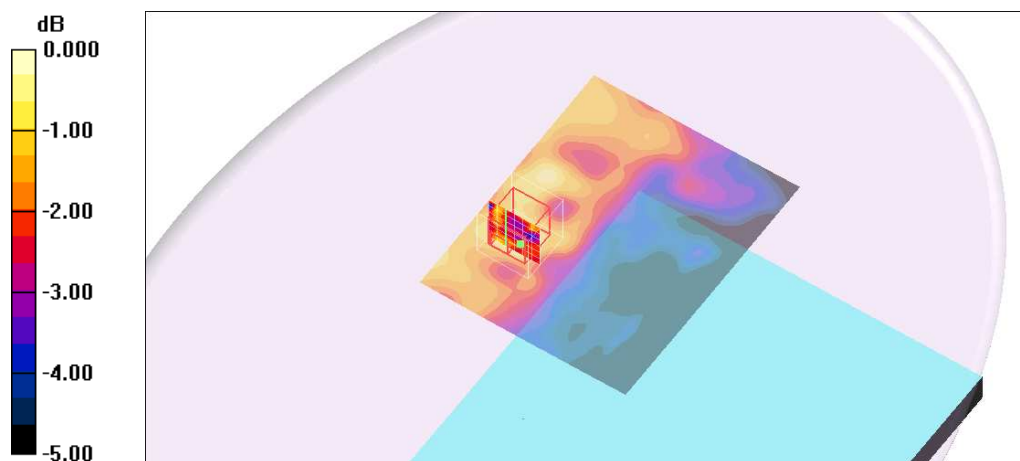
[Info: Interpolated medium parameters used for SAR evaluation.](#)

Maximum value of SAR (measured) = 0.005 mW/g

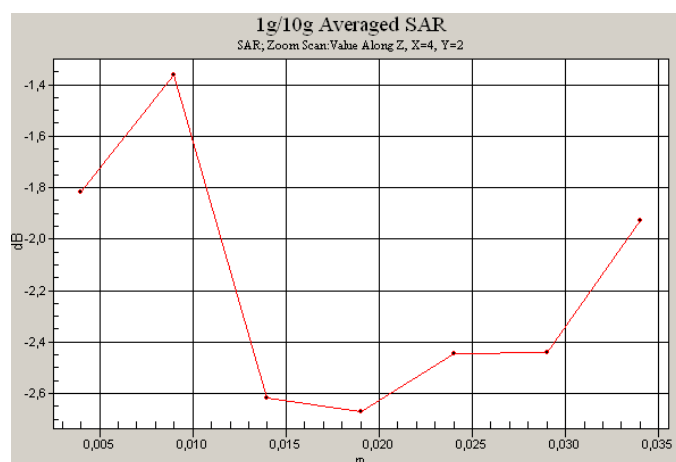
Chain B, 802.11n, Channel 6/Area Scan (81x101x1): Measurement grid: dx=15mm, dy=15mm

[Info: Interpolated medium parameters used for SAR evaluation.](#)

Maximum value of SAR (interpolated) = 0.006 mW/g



0 dB = 0.006mW/g



2450 MHz Band – 802.11n* Channel 6 – Chain B

DUT: U160 + Intel 622ANHMW + WNC Antennas; Type: Laptop; Serial: ---
Program Name: 802.11n* at 2450MHz

Communication System: 802.11; Frequency: 2437 MHz; Duty Cycle: 1:1
 Medium parameters used (interpolated): $f = 2437$ MHz; $\sigma = 1.98$ mho/m; $\epsilon_r = 50.3$; $\rho = 1000$ kg/m³
 Phantom section: Flat Section

DASY4 Configuration:

- Probe: ES3DV3 - SN3052; ConvF(4.06, 4.06, 4.06); Calibrated: 27/10/2009
- Sensor-Surface: 4mm (Mechanical Surface Detection)
- Electronics: DAE4 Sn669; Calibrated: 26/10/2009
- Phantom: Flat Phantom ELI4.0; Type: QDOVA001BA; Serial: SN:1060
- Measurement SW: DASY4, V4.7 Build 80; Postprocessing SW: SEMCAD, V1.8 Build 186

Chain B, 802.11n*, Channel 6/Area Scan 2 (81x81x1): Measurement grid: dx=15mm, dy=15mm

[Info: Interpolated medium parameters used for SAR evaluation.](#)

Maximum value of SAR (interpolated) = 0.017 mW/g

Chain B, 802.11n*, Channel 6/Zoom Scan (7x7x7)/Cube 0: Measurement grid: dx=5mm, dy=5mm, dz=5mm

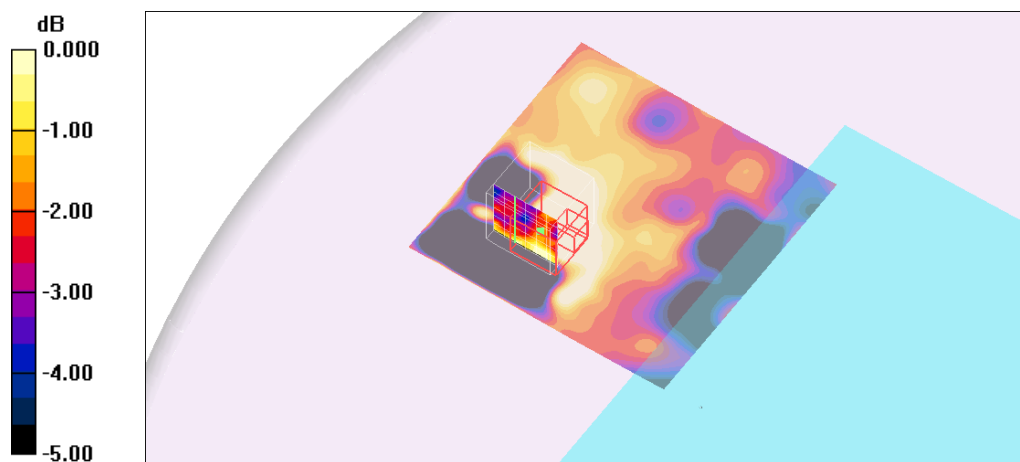
Reference Value = 1.14 V/m; Power Drift = -0.130 dB

Peak SAR (extrapolated) = 0.009 W/kg

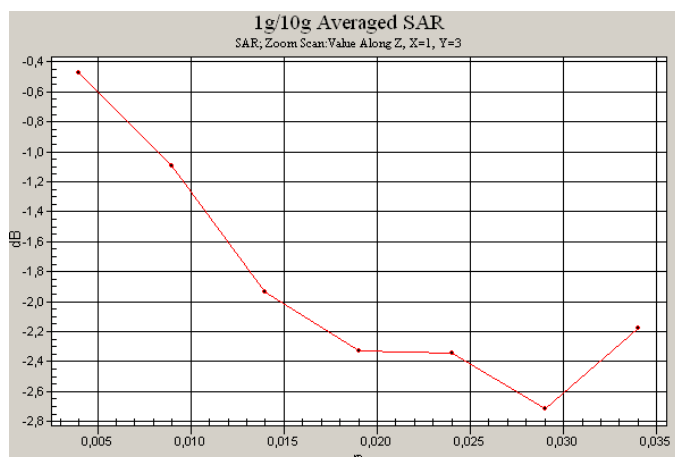
SAR(1 g) = 0.00476 mW/g; SAR(10 g) = 0.00371 mW/g

[Info: Interpolated medium parameters used for SAR evaluation.](#)

Maximum value of SAR (measured) = 0.005 mW/g



0 dB = 0.005mW/g



5200 MHz Band – 802.11a, Channel 52 – Chain A

DUT: U160 + Intel 622ANHMW + WNC Antennas; Type: Laptop; Serial: ---
Program Name: 802.11a at 5200MHz - Base

Communication System: 802.11; Frequency: 5260 MHz; Duty Cycle: 1:1
 Medium parameters used: $f = 5260$ MHz; $\sigma = 5.15$ mho/m; $\epsilon_r = 45.5$; $\rho = 1000$ kg/m³
 Phantom section: Flat Section

DASY4 Configuration:

- Probe: EX3DV4 - SN3687; ConvF(4.08, 4.08, 4.08); Calibrated: 16/03/2009
- Sensor-Surface: 2mm (Mechanical Surface Detection)
- Electronics: DAE4 Sn669; Calibrated: 26/10/2009
- Phantom: Flat Phantom ELI4.0; Type: QDOVA001BA; Serial: SN:1060
- Measurement SW: DASY4, V4.7 Build 80; Postprocessing SW: SEMCAD, V1.8 Build 186

Chain A, 802.11a, Channel 52/Area Scan (61x101x1): Measurement grid: dx=10mm, dy=10mm
 Maximum value of SAR (interpolated) = 0.140 mW/g

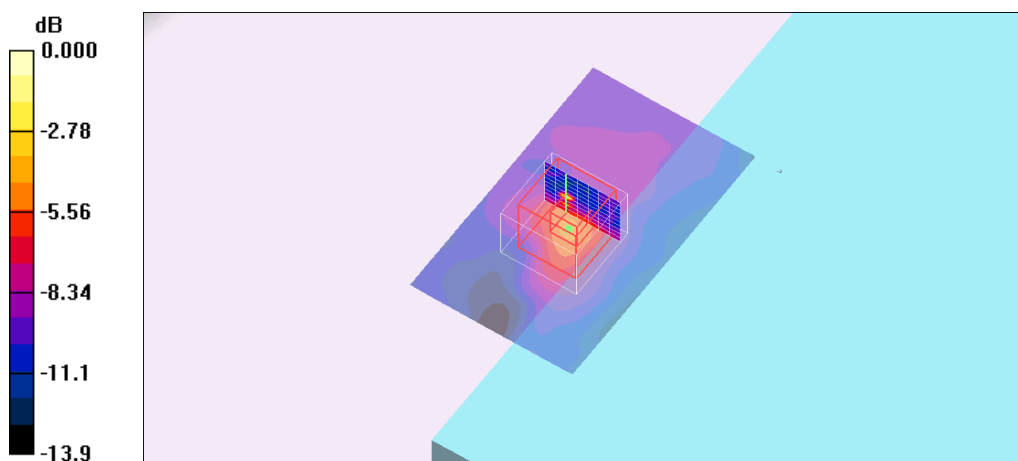
Chain A, 802.11a, Channel 52/Zoom Scan (8x8x11)/Cube 0: Measurement grid: dx=4mm, dy=4mm, dz=2mm

Reference Value = 5.12 V/m; Power Drift = -0.123 dB

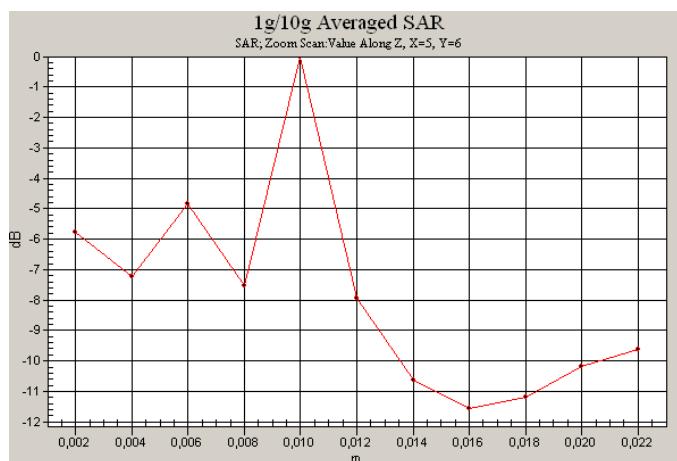
Peak SAR (extrapolated) = 0.370 W/kg

SAR(1 g) = 0.083 mW/g; SAR(10 g) = 0.049 mW/g

Maximum value of SAR (measured) = 0.370 mW/g



0 dB = 0.370mW/g



5200 MHz Band – 802.11n*, Channel 38 – Chain A

DUT: U160 + Intel 622ANHMW + WNC Antennas; Type: Laptop; Serial: ---
Program Name: 802.11n* at 5200MHz - Base

Communication System: 802.11; Frequency: 5190 MHz; Duty Cycle: 1:1
 Medium parameters used (interpolated): $f = 5190$ MHz; $\sigma = 5.03$ mho/m; $\epsilon_r = 45.7$; $\rho = 1000$ kg/m³
 Phantom section: Flat Section

DASY4 Configuration:

- Probe: EX3DV4 - SN3687; ConvF(4.08, 4.08, 4.08); Calibrated: 16/03/2009
- Sensor-Surface: 2mm (Mechanical Surface Detection)
- Electronics: DAE4 Sn669; Calibrated: 26/10/2009
- Phantom: Flat Phantom ELI4.0; Type: QDOVA001BA; Serial: SN:1060
- Measurement SW: DASY4, V4.7 Build 80; Postprocessing SW: SEMCAD, V1.8 Build 186

Chain A, 802.11n*, Channel 38/Area Scan (61x101x1): Measurement grid: dx=10mm, dy=10mm

[Info: Interpolated medium parameters used for SAR evaluation.](#)

Maximum value of SAR (interpolated) = 0.055 mW/g

Chain A, 802.11n*, Channel 38/Zoom Scan (8x8x11)/Cube 0: Measurement grid: dx=4mm, dy=4mm, dz=2mm

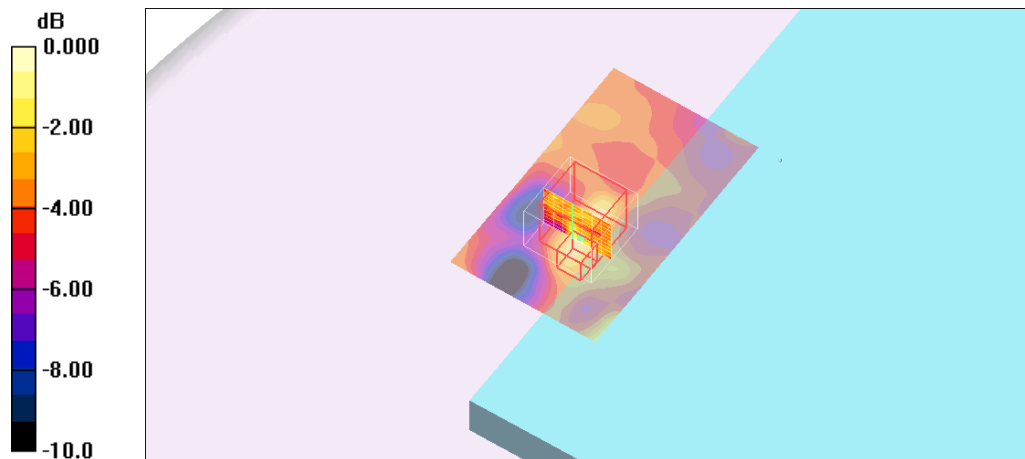
Reference Value = 3.19 V/m; Power Drift = -0.149 dB

Peak SAR (extrapolated) = 0.414 W/kg

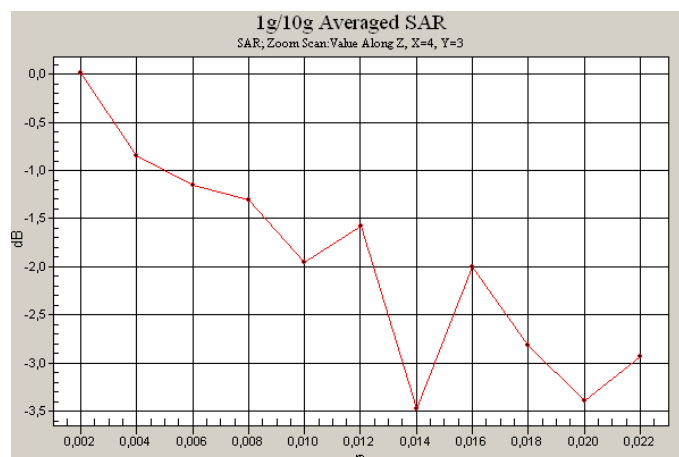
SAR(1 g) = 0.039 mW/g; SAR(10 g) = 0.030 mW/g

[Info: Interpolated medium parameters used for SAR evaluation.](#)

Maximum value of SAR (measured) = 0.064 mW/g



0 dB = 0.064mW/g



5200 MHz Band – 802.11a, Channel 48 – Chain B

DUT: U160 + Intel 622ANHMW + WNC Antennas; Type: Laptop; Serial: ---
Program Name: 802.11a at 5200MHz - Base

Communication System: 802.11; Frequency: 5240 MHz; Duty Cycle: 1:1
 Medium parameters used: $f = 5240$ MHz; $\sigma = 5.13$ mho/m; $\epsilon_r = 45.5$; $\rho = 1000$ kg/m³
 Phantom section: Flat Section

DASY4 Configuration:

- Probe: EX3DV4 - SN3687; ConvF(4.08, 4.08, 4.08); Calibrated: 16/03/2009
- Sensor-Surface: 2mm (Mechanical Surface Detection)
- Electronics: DAE4 Sn669; Calibrated: 26/10/2009
- Phantom: Flat Phantom ELI4.0; Type: QDOVA001BA; Serial: SN:1060
- Measurement SW: DASY4, V4.7 Build 80; Postprocessing SW: SEMCAD, V1.8 Build 186

Chain B, 802.11a, Channel 48/Area Scan (61x101x1): Measurement grid: dx=10mm, dy=10mm
 Maximum value of SAR (interpolated) = 0.222 mW/g

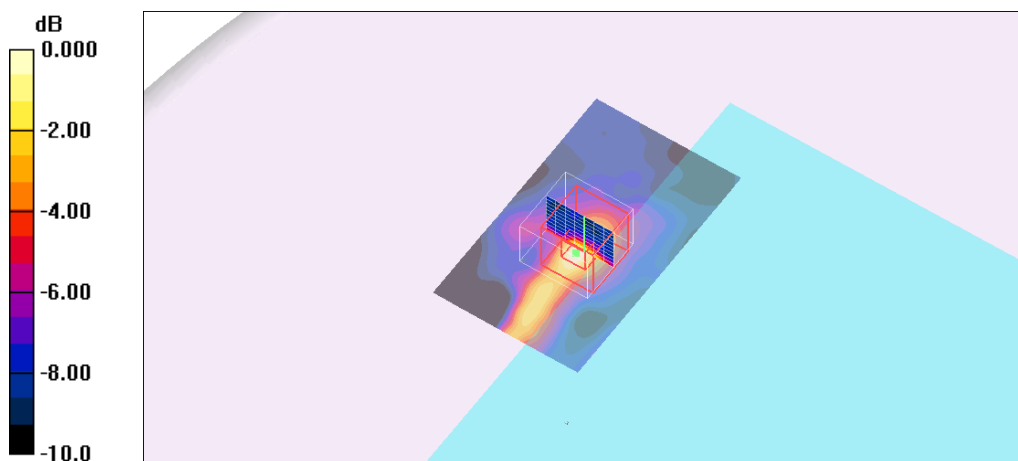
Chain B, 802.11a, Channel 48/Zoom Scan (8x8x11)/Cube 0: Measurement grid: dx=4mm, dy=4mm, dz=2mm

Reference Value = 6.90 V/m; Power Drift = -0.095 dB

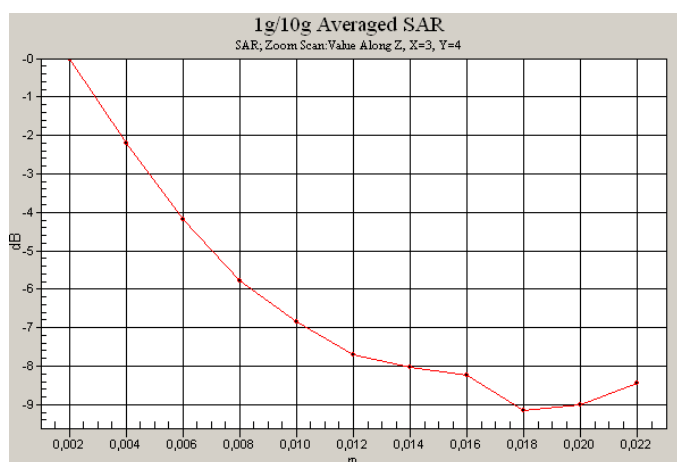
Peak SAR (extrapolated) = 0.391 W/kg

SAR(1 g) = 0.112 mW/g; SAR(10 g) = 0.035 mW/g

Maximum value of SAR (measured) = 0.229 mW/g



0 dB = 0.229mW/g



5200 MHz Band – 802.11n*, Channel 62 – Chain B

DUT: U160 + Intel 622ANHMW + WNC Antennas; Type: Laptop; Serial: ---
Program Name: 802.11n* at 5200MHz - Base

Communication System: 802.11; Frequency: 5310 MHz; Duty Cycle: 1:1
 Medium parameters used (interpolated): $f = 5310$ MHz; $\sigma = 5.22$ mho/m; $\epsilon_r = 45.3$; $\rho = 1000$ kg/m³
 Phantom section: Flat Section

DASY4 Configuration:

- Probe: EX3DV4 - SN3687; ConvF(4.08, 4.08, 4.08); Calibrated: 16/03/2009
- Sensor-Surface: 2mm (Mechanical Surface Detection)
- Electronics: DAE4 Sn669; Calibrated: 26/10/2009
- Phantom: Flat Phantom ELI4.0; Type: QDOVA001BA; Serial: SN:1060
- Measurement SW: DASY4, V4.7 Build 80; Postprocessing SW: SEMCAD, V1.8 Build 186

Chain B, 802.11n*, Channel 62/Area Scan (61x101x1): Measurement grid: dx=10mm, dy=10mm

[Info: Interpolated medium parameters used for SAR evaluation.](#)

Maximum value of SAR (interpolated) = 0.254 mW/g

Chain B, 802.11n*, Channel 62/Zoom Scan (8x8x11)/Cube 0: Measurement grid: dx=4mm, dy=4mm, dz=2mm

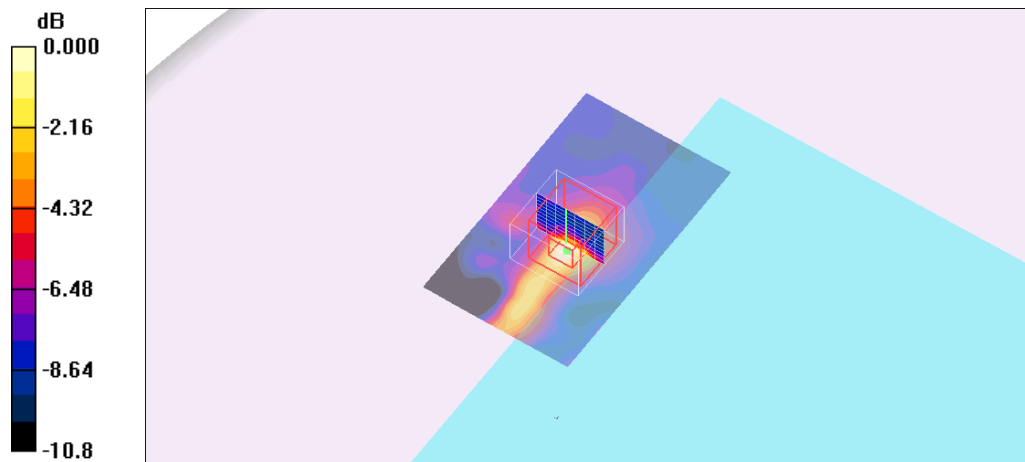
Reference Value = 6.49 V/m; Power Drift = 0.150 dB

Peak SAR (extrapolated) = 0.815 W/kg

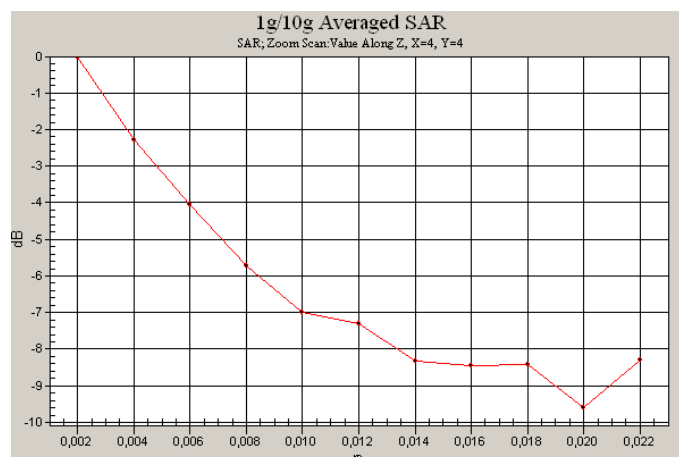
SAR(1 g) = 0.142 mW/g; SAR(10 g) = 0.064 mW/g

[Info: Interpolated medium parameters used for SAR evaluation.](#)

Maximum value of SAR (measured) = 0.246 mW/g



0 dB = 0.246mW/g



5600 MHz Band – 802.11a, Channel 120 – Chain A

DUT: U160 + Intel 622ANHMW + WNC Antennas; Type: Laptop; Serial: ---
Program Name: 802.11a at 5600MHz - Base

Communication System: 802.11; Frequency: 5600 MHz; Duty Cycle: 1:1
 Medium parameters used: $f = 5600$ MHz; $\sigma = 5.65$ mho/m; $\epsilon_r = 44.7$; $\rho = 1000$ kg/m³
 Phantom section: Flat Section

DASY4 Configuration:

- Probe: EX3DV4 - SN3687; ConvF(3.43, 3.43, 3.43); Calibrated: 16/03/2009
- Sensor-Surface: 2mm (Mechanical Surface Detection)
- Electronics: DAE4 Sn669; Calibrated: 26/10/2009
- Phantom: Flat Phantom ELI4.0; Type: QDOVA001BA; Serial: SN:1060
- Measurement SW: DASY4, V4.7 Build 80; Postprocessing SW: SEMCAD, V1.8 Build 186

Chain A, 802.11a, Channel 120/Zoom Scan (8x8x11)/Cube 0: Measurement grid: dx=4mm, dy=4mm, dz=2mm

Reference Value = 2.80 V/m; Power Drift = -0.176 dB

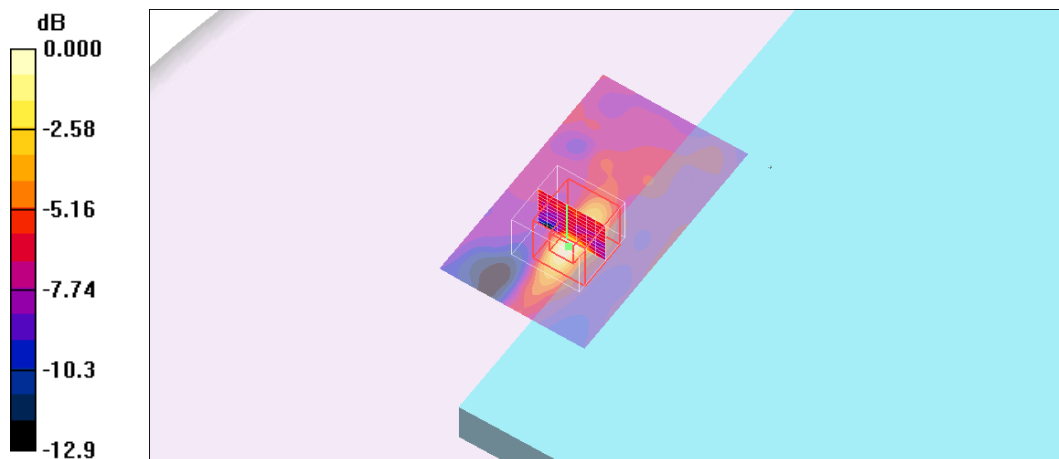
Peak SAR (extrapolated) = 0.295 W/kg

SAR(1 g) = 0.075 mW/g; SAR(10 g) = 0.041 mW/g

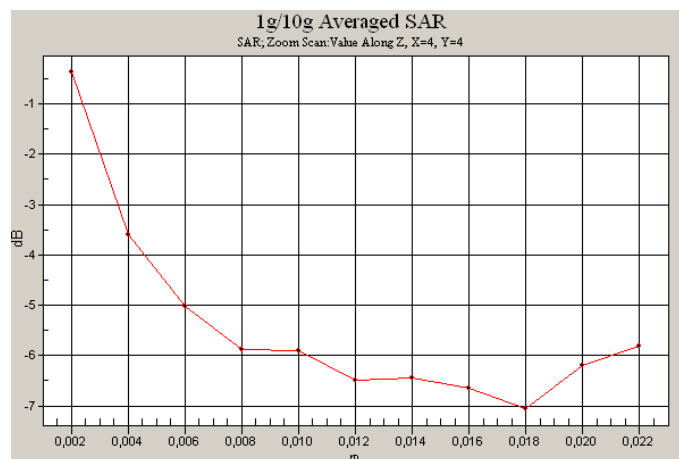
Maximum value of SAR (measured) = 0.143 mW/g

Chain A, 802.11a, Channel 120/Area Scan (61x101x1): Measurement grid: dx=10mm, dy=10mm

Maximum value of SAR (interpolated) = 0.156 mW/g



0 dB = 0.156mW/g



5600 MHz Band – 802.11n*, Channel 102 – Chain A

DUT: U160 + Intel 622ANHMW + WNC Antennas; Type: Laptop; Serial: ---
Program Name: 802.11n* at 5600MHz - Base

Communication System: 802.11; Frequency: 5510 MHz; Duty Cycle: 1:1
 Medium parameters used (interpolated): $f = 5510$ MHz; $\sigma = 5.52$ mho/m; $\epsilon_r = 44.9$; $\rho = 1000$ kg/m³
 Phantom section: Flat Section

DASY4 Configuration:

- Probe: EX3DV4 - SN3687; ConvF(3.43, 3.43, 3.43); Calibrated: 16/03/2009
- Sensor-Surface: 2mm (Mechanical Surface Detection)
- Electronics: DAE4 Sn669; Calibrated: 26/10/2009
- Phantom: Flat Phantom ELI4.0; Type: QDOVA001BA; Serial: SN:1060
- Measurement SW: DASY4, V4.7 Build 80; Postprocessing SW: SEMCAD, V1.8 Build 186

Chain A, 802.11n*, Channel 102/Zoom Scan (8x8x11)/Cube 0: Measurement grid: dx=4mm, dy=4mm, dz=2mm

Reference Value = 3.86 V/m; Power Drift = -0.043 dB

Peak SAR (extrapolated) = 0.193 W/kg

SAR(1 g) = 0.050 mW/g; SAR(10 g) = 0.032 mW/g

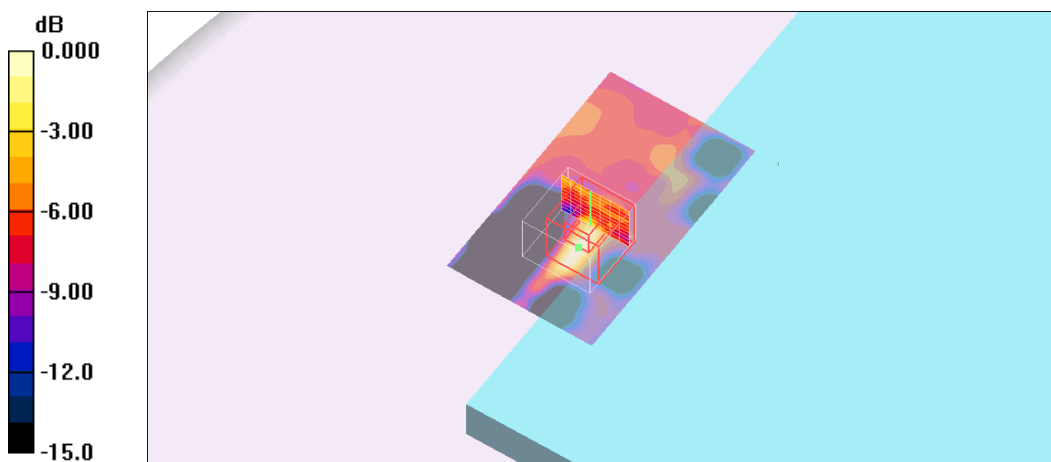
[Info: Interpolated medium parameters used for SAR evaluation.](#)

Maximum value of SAR (measured) = 0.099 mW/g

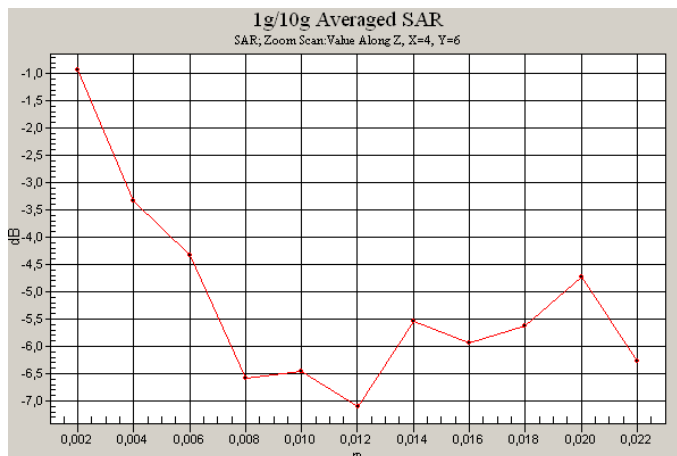
Chain A, 802.11n*, Channel 102/Area Scan (61x101x1): Measurement grid: dx=10mm, dy=10mm

[Info: Interpolated medium parameters used for SAR evaluation.](#)

Maximum value of SAR (interpolated) = 0.123 mW/g



0 dB = 0.123mW/g



5600 MHz Band – 802.11a, Channel 140 – Chain B

**DUT: U160 + Intel 622ANHMW + WNC Antennas; Type: Laptop; Serial: ---
Program Name: 802.11a at 5600MHz - Base**

Communication System: 802.11; Frequency: 5700 MHz; Duty Cycle: 1:1
Medium parameters used: $f = 5700$ MHz; $\sigma = 5.79$ mho/m; $\epsilon_r = 44.5$; $\rho = 1000$ kg/m³
Phantom section: Flat Section

DASY4 Configuration:

- Probe: EX3DV4 - SN3687; ConvF(3.43, 3.43, 3.43); Calibrated: 16/03/2009
- Sensor-Surface: 2mm (Mechanical Surface Detection)
- Electronics: DAE4 Sn669; Calibrated: 26/10/2009
- Phantom: Flat Phantom ELI4.0; Type: QDOVA001BA; Serial: SN:1060
- Measurement SW: DASY4, V4.7 Build 80; Postprocessing SW: SEMCAD, V1.8 Build 186

Chain B, 802.11a, Channel 140/Zoom Scan (8x8x11)/Cube 0: Measurement grid: dx=4mm, dy=4mm, dz=2mm

Reference Value = 2.53 V/m; Power Drift = 0.332 dB

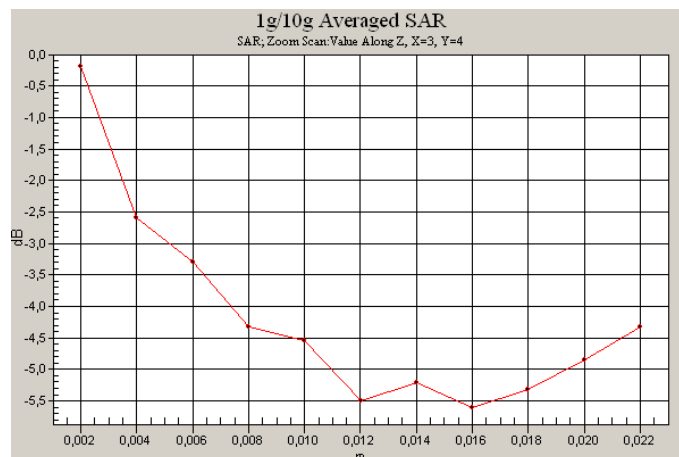
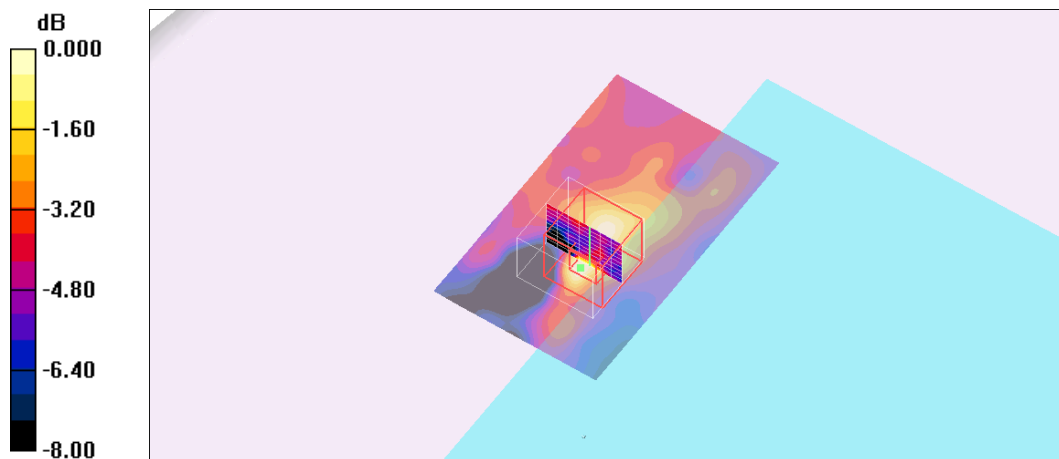
Peak SAR (extrapolated) = 0.194 W/kg

SAR(1 g) = 0.049 mW/g; SAR(10 g) = 0.030 mW/g

Maximum value of SAR (measured) = 0.083 mW/g

Chain B, 802.11a, Channel 140/Area Scan (61x101x1): Measurement grid: dx=10mm, dy=10mm

Maximum value of SAR (interpolated) = 0.087 mW/g



5600 MHz Band – 802.11n*, Channel 102 – Chain B

DUT: U160 + Intel 622ANHMW + WNC Antennas; Type: Laptop; Serial: ---
Program Name: 802.11n* at 5600MHz - Base

Communication System: 802.11; Frequency: 5510 MHz; Duty Cycle: 1:1
 Medium parameters used (interpolated): $f = 5510$ MHz; $\sigma = 5.52$ mho/m; $\epsilon_r = 44.9$; $\rho = 1000$ kg/m³
 Phantom section: Flat Section

DASY4 Configuration:

- Probe: EX3DV4 - SN3687; ConvF(3.43, 3.43, 3.43); Calibrated: 16/03/2009
- Sensor-Surface: 2mm (Mechanical Surface Detection)
- Electronics: DAE4 Sn669; Calibrated: 26/10/2009
- Phantom: Flat Phantom ELI4.0; Type: QDOVA001BA; Serial: SN:1060
- Measurement SW: DASY4, V4.7 Build 80; Postprocessing SW: SEMCAD, V1.8 Build 186

Chain B, 802.11n*, Channel 102/Zoom Scan (8x8x11)/Cube 0: Measurement grid: dx=4mm, dy=4mm, dz=2mm

Reference Value = 4.93 V/m; Power Drift = -0.196 dB

Peak SAR (extrapolated) = 0.529 W/kg

SAR(1 g) = 0.146 mW/g; SAR(10 g) = 0.063 mW/g

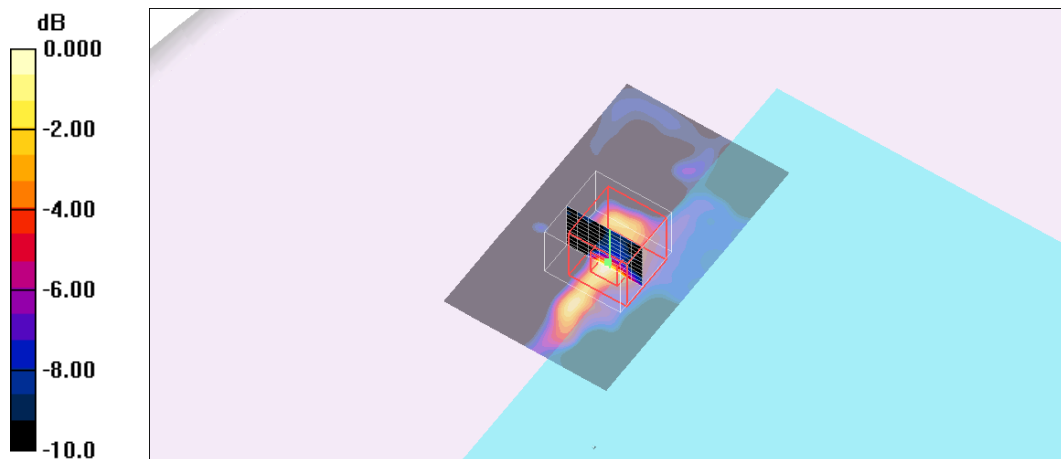
[Info: Interpolated medium parameters used for SAR evaluation.](#)

Maximum value of SAR (measured) = 0.286 mW/g

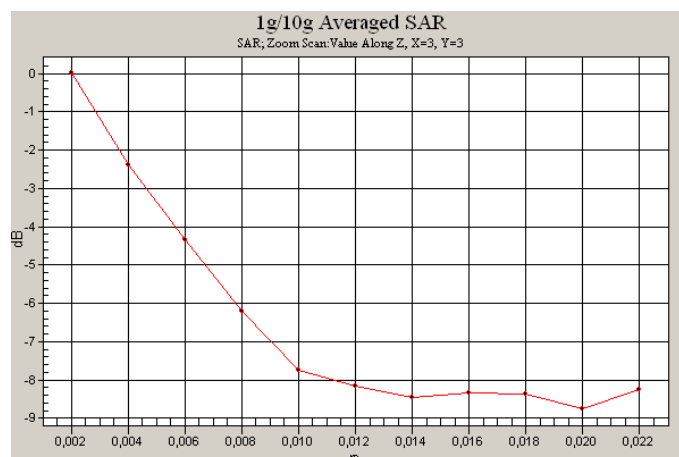
Chain B, 802.11n*, Channel 102/Area Scan (61x101x1): Measurement grid: dx=10mm, dy=10mm

[Info: Interpolated medium parameters used for SAR evaluation.](#)

Maximum value of SAR (interpolated) = 0.285 mW/g



0 dB = 0.285mW/g



5800 MHz Band – 802.11a, Channel 157 – Chain A

DUT: U160 + Intel 622ANHMW + WNC Antennas; Type: Laptop; Serial: ---
Program Name: 802.11a at 5800MHz - Base

Communication System: 802.11; Frequency: 5785 MHz; Duty Cycle: 1:1
 Medium parameters used (interpolated): $f = 5785$ MHz; $\sigma = 5.91$ mho/m; $\epsilon_r = 44.2$; $\rho = 1000$ kg/m³
 Phantom section: Flat Section

DASY4 Configuration:

- Probe: EX3DV4 - SN3687; ConvF(3.74, 3.74, 3.74); Calibrated: 16/03/2009
- Sensor-Surface: 2mm (Mechanical Surface Detection)
- Electronics: DAE4 Sn669; Calibrated: 26/10/2009
- Phantom: Flat Phantom ELI4.0; Type: QDOVA001BA; Serial: SN:1060
- Measurement SW: DASY4, V4.7 Build 80; Postprocessing SW: SEMCAD, V1.8 Build 186

Chain A, 802.11a, Channel 157/Area Scan (61x101x1): Measurement grid: dx=10mm, dy=10mm

[Info: Interpolated medium parameters used for SAR evaluation.](#)

Maximum value of SAR (interpolated) = 0.081 mW/g

Chain A, 802.11a, Channel 157/Zoom Scan (8x8x11)/Cube 0: Measurement grid: dx=4mm, dy=4mm, dz=2mm

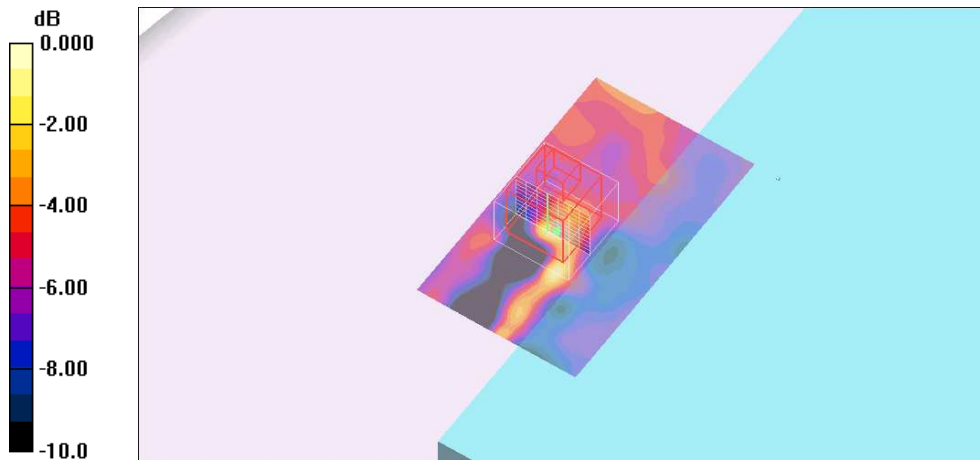
Reference Value = 2.44 V/m; Power Drift = 0.394 dB

Peak SAR (extrapolated) = 0.158 W/kg

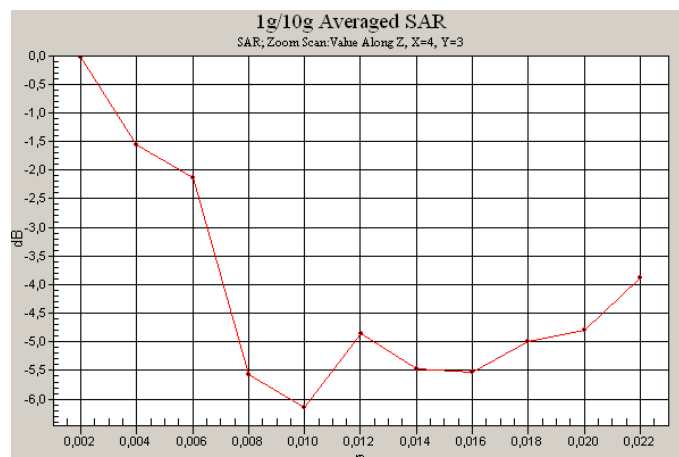
SAR(1 g) = 0.037 mW/g; SAR(10 g) = 0.032 mW/g

[Info: Interpolated medium parameters used for SAR evaluation.](#)

Maximum value of SAR (measured) = 0.091 mW/g



0 dB = 0.091mW/g



5800 MHz Band – 802.11n*, Channel 151 – Chain A

DUT: U160 + Intel 622ANHMW + WNC Antennas; Type: Laptop; Serial: ---
Program Name: 802.11n* at 5800MHz - Lateral2

Communication System: 802.11; Frequency: 5755 MHz; Duty Cycle: 1:1
 Medium parameters used (interpolated): $f = 5755$ MHz; $\sigma = 5.85$ mho/m; $\epsilon_r = 44.2$; $\rho = 1000$ kg/m³
 Phantom section: Flat Section

DASY4 Configuration:

- Probe: EX3DV4 - SN3687; ConvF(3.74, 3.74, 3.74); Calibrated: 16/03/2009
- Sensor-Surface: 2mm (Mechanical Surface Detection)
- Electronics: DAE4 Sn669; Calibrated: 26/10/2009
- Phantom: Flat Phantom ELI4.0; Type: QDOVA001BA; Serial: SN:1060
- Measurement SW: DASY4, V4.7 Build 80; Postprocessing SW: SEMCAD, V1.8 Build 186

Chain A, 802.11n*, Channel 151/Area Scan (61x101x1): Measurement grid: dx=10mm, dy=10mm

[Info: Interpolated medium parameters used for SAR evaluation.](#)

Maximum value of SAR (interpolated) = 0.109 mW/g

Chain A, 802.11n*, Channel 151/Zoom Scan (8x8x11)/Cube 0: Measurement grid: dx=4mm, dy=4mm, dz=2mm

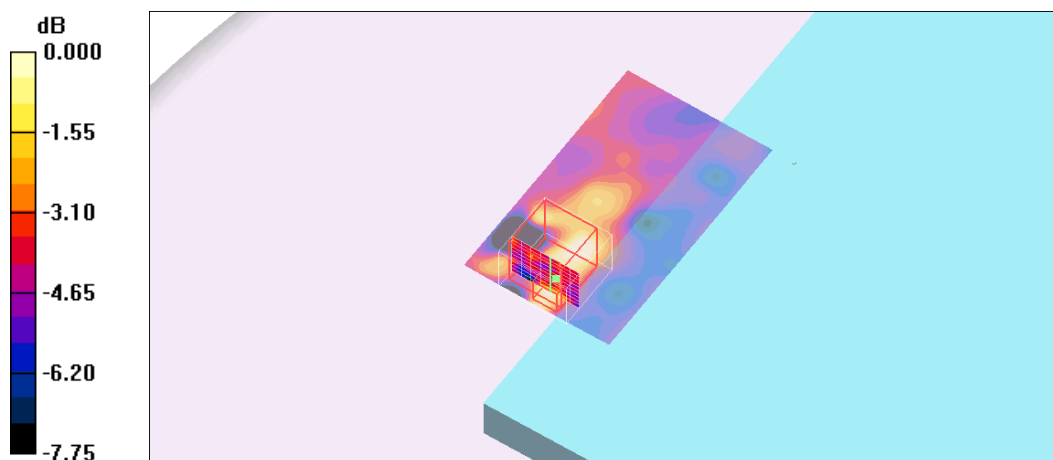
Reference Value = 4.35 V/m; Power Drift = 0.106 dB

Peak SAR (extrapolated) = 0.168 W/kg

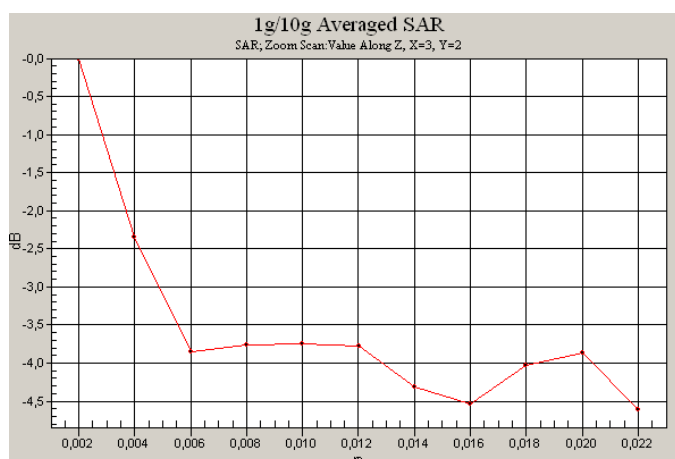
SAR(1 g) = 0.061 mW/g; SAR(10 g) = 0.043 mW/g

[Info: Interpolated medium parameters used for SAR evaluation.](#)

Maximum value of SAR (measured) = 0.101 mW/g



0 dB = 0.101mW/g



5800 MHz Band – 802.11a, Channel 165 – Chain B

DUT: U160 + Intel 622ANHMW + WNC Antennas; Type: Laptop; Serial: ---
Program Name: 802.11a at 5800MHz - Base

Communication System: 802.11; Frequency: 5825 MHz; Duty Cycle: 1:1
 Medium parameters used (extrapolated): $f = 5825$ MHz; $\sigma = 5.93$ mho/m; $\epsilon_r = 44.1$; $\rho = 1000$ kg/m³
 Phantom section: Flat Section

DASY4 Configuration:

- Probe: EX3DV4 - SN3687; ConvF(3.74, 3.74, 3.74); Calibrated: 16/03/2009
- Sensor-Surface: 2mm (Mechanical Surface Detection)
- Electronics: DAE4 Sn669; Calibrated: 26/10/2009
- Phantom: Flat Phantom ELI4.0; Type: QDOVA001BA; Serial: SN:1060
- Measurement SW: DASY4, V4.7 Build 80; Postprocessing SW: SEMCAD, V1.8 Build 186

Chain B, 802.11a, Channel 165/Area Scan (61x101x1): Measurement grid: dx=10mm, dy=10mm

[Info: Extrapolated medium parameters used for SAR evaluation.](#)

Maximum value of SAR (interpolated) = 0.084 mW/g

Chain B, 802.11a, Channel 165/Zoom Scan (8x8x11)/Cube 0: Measurement grid: dx=4mm, dy=4mm, dz=2mm

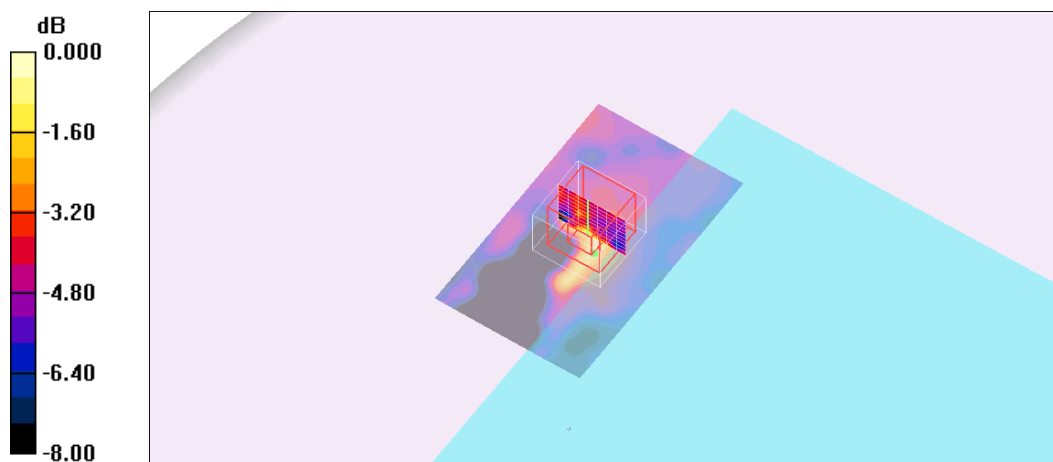
Reference Value = 2.95 V/m; Power Drift = -0.249 dB

Peak SAR (extrapolated) = 0.158 W/kg

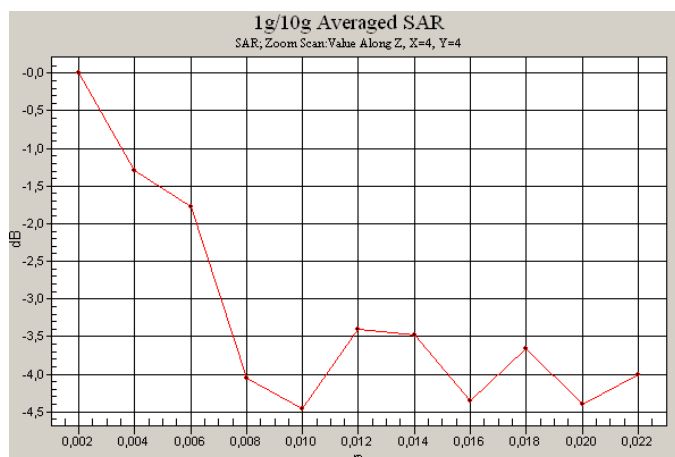
SAR(1 g) = 0.053 mW/g; SAR(10 g) = 0.040 mW/g

[Info: Extrapolated medium parameters used for SAR evaluation.](#)

Maximum value of SAR (measured) = 0.102 mW/g



0 dB = 0.102mW/g



5800 MHz Band – 802.11n*, Channel 159 – Chain B

DUT: U160 + Intel 622ANHMW + WNC Antennas; Type: Laptop; Serial: ---
Program Name: 802.11n* at 5800MHz - Lateral2

Communication System: 802.11; Frequency: 5795 MHz; Duty Cycle: 1:1
 Medium parameters used (interpolated): $f = 5795$ MHz; $\sigma = 5.92$ mho/m; $\epsilon_r = 44.2$; $\rho = 1000$ kg/m³
 Phantom section: Flat Section

DASY4 Configuration:

- Probe: EX3DV4 - SN3687; ConvF(3.74, 3.74, 3.74); Calibrated: 16/03/2009
- Sensor-Surface: 2mm (Mechanical Surface Detection)
- Electronics: DAE4 Sn669; Calibrated: 26/10/2009
- Phantom: Flat Phantom ELI4.0; Type: QDOVA001BA; Serial: SN:1060
- Measurement SW: DASY4, V4.7 Build 80; Postprocessing SW: SEMCAD, V1.8 Build 186

Chain B, 802.11n*, Channel 159/Area Scan (61x101x1): Measurement grid: dx=10mm, dy=10mm

[Info: Interpolated medium parameters used for SAR evaluation.](#)

Maximum value of SAR (interpolated) = 0.125 mW/g

Chain B, 802.11n*, Channel 159/Zoom Scan (8x8x11)/Cube 0: Measurement grid: dx=4mm, dy=4mm, dz=2mm

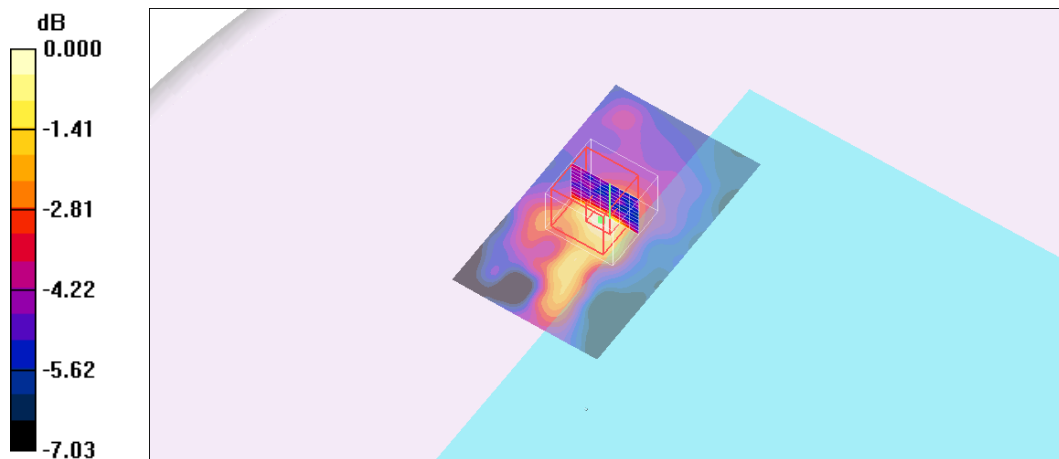
Reference Value = 4.94 V/m; Power Drift = 0.157 dB

Peak SAR (extrapolated) = 0.230 W/kg

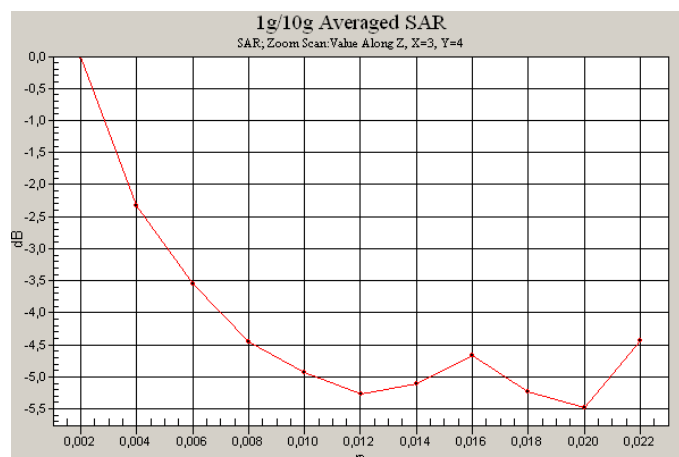
SAR(1 g) = 0.080 mW/g; SAR(10 g) = 0.054 mW/g

[Info: Interpolated medium parameters used for SAR evaluation.](#)

Maximum value of SAR (measured) = 0.128 mW/g



0 dB = 0.128mW/g



APPENDIX D: Calibration Data

**Calibration Laboratory of
Schmid & Partner
Engineering AG**
Zeughausstrasse 43, 8004 Zurich, Switzerland



S Schweizerischer Kalibrierdienst
C Service suisse d'étalonnage
S Servizio svizzero di taratura
S Swiss Calibration Service

Accredited by the Swiss Accreditation Service (SAS)
The Swiss Accreditation Service is one of the signatories to the EA
Multilateral Agreement for the recognition of calibration certificates

Accreditation No.: **SCS 108**

Client **AT4 wireless**

Certificate No: **ES3-3052_Oct09**

CALIBRATION CERTIFICATE

Object: **ES3DV3 - SN:3052**

Calibration procedure(s): **QA CAL-01.v6, QA CAL-23.v3 and QA CAL-25.v2
Calibration procedure for dosimetric E-field probes**

Calibration date: **October 27, 2009**



This calibration certificate documents the traceability to national standards, which realize the physical units of measurements (SI).
The measurements and the uncertainties with confidence probability are given on the following pages and are part of the certificate.

All calibrations have been conducted in the closed laboratory facility: environment temperature (22 ± 3)°C and humidity < 70%.

Calibration Equipment used (M&TE critical for calibration)

Primary Standards	ID #	Cal Date (Certificate No.)	Scheduled Calibration
Power meter E4419B	GB41293874	1-Apr-09 (No. 217-01030)	Apr-10
Power sensor E4412A	MY41495277	1-Apr-09 (No. 217-01030)	Apr-10
Power sensor E4412A	MY41498067	1-Apr-09 (No. 217-01030)	Apr-10
Reference 3 dB Attenuator	SN: S5054 (3c)	31-Mar-09 (No. 217-01026)	Mar-10
Reference 20 dB Attenuator	SN: S5086 (20b)	31-Mar-09 (No. 217-01028)	Mar-10
Reference 30 dB Attenuator	SN: S5129 (30b)	31-Mar-09 (No. 217-01027)	Mar-10
Reference Probe ES3DV2	SN: 3013	2-Jan-09 (No. ES3-3013_Jan09)	Jan-10
DAE4	SN: 660	29-Sep-09 (No. DAE4-660_Sep09)	Sep-10

Secondary Standards	ID #	Check Date (in house)	Scheduled Check
RF generator HP 8648C	US3642U01700	4-Aug-99 (in house check Oct-09)	In house check: Oct-11
Network Analyzer HP 8753E	US37390585	18-Oct-01 (in house check Oct-09)	In house check: Oct10

	Name	Function	Signature
Calibrated by:	Marcel Fehr	Laboratory Technician	
Approved by:	Katja Pokovic	Technical Manager	

Issued: October 27, 2009

This calibration certificate shall not be reproduced except in full without written approval of the laboratory.

Certificate No: ES3-3052_Oct09

Page 1 of 11

ES3DV3 SN:3052

October 27, 2009

DASY - Parameters of Probe: ES3DV3 SN:3052

Calibration Parameter Determined in Head Tissue Simulating Media

f [MHz]	Validity [MHz] ^c	Permittivity	Conductivity	ConvF X	ConvF Y	ConvF Z	Alpha	Depth Unc (k=2)
835	± 50 / ± 100	41.5 ± 5%	0.90 ± 5%	5.83	5.83	5.83	0.76	1.13 ± 11.0%
900	± 50 / ± 100	41.5 ± 5%	0.97 ± 5%	5.65	5.65	5.65	0.69	1.17 ± 11.0%
1750	± 50 / ± 100	40.1 ± 5%	1.37 ± 5%	4.99	4.99	4.99	0.39	1.65 ± 11.0%
1900	± 50 / ± 100	40.0 ± 5%	1.40 ± 5%	4.81	4.81	4.81	0.43	1.61 ± 11.0%
2000	± 50 / ± 100	40.0 ± 5%	1.40 ± 5%	4.69	4.69	4.69	0.45	1.62 ± 11.0%
2450	± 50 / ± 100	39.2 ± 5%	1.80 ± 5%	4.26	4.26	4.26	0.31	2.22 ± 11.0%

^c The validity of ± 100 MHz only applies for DASY v4.4 and higher (see Page 2). The uncertainty is the RSS of the ConvF uncertainty at calibration frequency and the uncertainty for the indicated frequency band.

ES3DV3 SN:3052

October 27, 2009

DASY - Parameters of Probe: ES3DV3 SN:3052

Calibration Parameter Determined in Body Tissue Simulating Media

f [MHz]	Validity [MHz] ^C	Permittivity	Conductivity	ConvF X	ConvF Y	ConvF Z	Alpha	Depth Unc (k=2)
835	± 50 / ± 100	55.2 ± 5%	0.97 ± 5%	5.71	5.71	5.71	0.70	1.18 ± 11.0%
900	± 50 / ± 100	55.0 ± 5%	1.05 ± 5%	5.55	5.55	5.55	0.78	1.16 ± 11.0%
1750	± 50 / ± 100	53.4 ± 5%	1.49 ± 5%	4.66	4.66	4.66	0.26	2.59 ± 11.0%
1900	± 50 / ± 100	53.3 ± 5%	1.52 ± 5%	4.43	4.43	4.43	0.30	2.45 ± 11.0%
2000	± 50 / ± 100	53.3 ± 5%	1.52 ± 5%	4.46	4.46	4.46	0.25	2.90 ± 11.0%
2450	± 50 / ± 100	52.7 ± 5%	1.95 ± 5%	4.06	4.06	4.06	0.49	1.49 ± 11.0%

^C The validity of ± 100 MHz only applies for DASY v4.4 and higher (see Page 2). The uncertainty is the RSS of the ConvF uncertainty at calibration frequency and the uncertainty for the indicated frequency band.

**Calibration Laboratory of
Schmid & Partner
Engineering AG**
Zeughausstrasse 43, 8004 Zurich, Switzerland



S Schweizerischer Kalibrierdienst
C Service suisse d'étalonnage
S Servizio svizzero di taratura
S Swiss Calibration Service

Accredited by the Swiss Accreditation Service (SAS)

Accreditation No.: **SCS 108**

The Swiss Accreditation Service is one of the signatories to the EA
Multilateral Agreement for the recognition of calibration certificates

Client **AT4wireless**

Certificate No: **EX3-3687_Mar09/2**

CALIBRATION CERTIFICATE (Replacement of No: EX3-3687_Mar09)

Object **EX3DV4 - SN:3687**

Calibration procedure(s) **QA CAL-01.v6, QA CAL-14.v3 and QA CAL-23.v3
Calibration procedure for dosimetric E-field probes**

Calibration date: **March 16, 2009**



Condition of the calibrated item: **In Tolerance**

This calibration certificate documents the traceability to national standards, which realize the physical units of measurements (SI).
The measurements and the uncertainties with confidence probability are given on the following pages and are part of the certificate.

All calibrations have been conducted in the closed laboratory facility, environment temperature (22 ± 3)°C and humidity < 70%.

Calibration Equipment used (M&TE critical for calibration)

Primary Standards	ID #	Cal Date (Certificate No.)	Scheduled Calibration
Power meter E4419B	GB41293874	1-Apr-08 (No. 217-00788)	Apr-09
Power sensor E4412A	MY41495277	1-Apr-08 (No. 217-00788)	Apr-09
Power sensor E4412A	MY41498087	1-Apr-08 (No. 217-00788)	Apr-09
Reference 3 dB Attenuator	SN: S5054 (3c)	1-Jul-08 (No. 217-00865)	Jul-09
Reference 20 dB Attenuator	SN: S5086 (20b)	31-Mar-08 (No. 217-00787)	Apr-09
Reference 30 dB Attenuator	SN: S5129 (30b)	1-Jul-08 (No. 217-00866)	Jul-09
Reference Probe ES3DV2	SN: 3013	2-Jan-09 (No. ES3-3013_Jan09)	Jan-10
DAE4	SN: 660	9-Sep-08 (No. DAE4-660_Sep08)	Sep-09
Secondary Standards	ID #	Check Date (in house)	Scheduled Check
RF generator HP 8648C	US3642U01700	4-Aug-99 (in house check Oct-07)	In house check: Oct-09
Network Analyzer HP 8753E	US37390585	18-Oct-01 (in house check Oct-08)	In house check: Oct-09

	Name	Function	Signature
Calibrated by:	Katja Pokovic	Technical Manager	
Approved by:	Niels Kuster	Quality Manager	

Issued: April 29, 2009

This calibration certificate shall not be reproduced except in full without written approval of the laboratory.

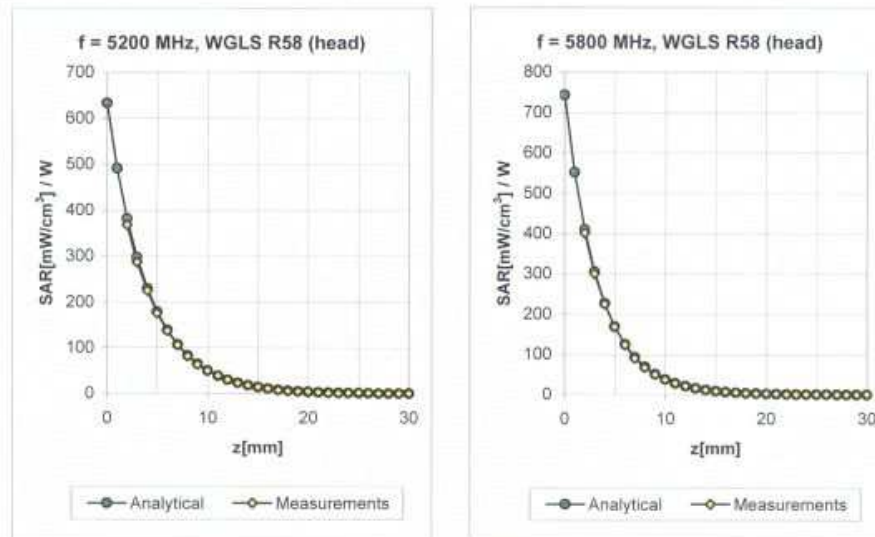
Certificate No: EX3-3687_Mar09/2

Page 1 of 9

EX3DV4 SN:3687

March 16, 2009

Conversion Factor Assessment



f [MHz]	Validity [MHz] ^c	TSL	Permittivity	Conductivity	Alpha	Depth	ConvF Uncertainty
5200	± 50 / ± 100	Head	36.0 ± 5%	4.66 ± 5%	0.50	1.80	4.48 ± 13.1% (k=2)
5600	± 50 / ± 100	Head	35.5 ± 5%	5.07 ± 5%	0.50	1.80	3.64 ± 13.1% (k=2)
5800	± 50 / ± 100	Head	35.3 ± 5%	5.27 ± 5%	0.50	1.80	4.03 ± 13.1% (k=2)
5200	± 50 / ± 100	Body	49.0 ± 5%	5.30 ± 5%	0.50	1.85	4.08 ± 13.1% (k=2)
5600	± 50 / ± 100	Body	48.5 ± 5%	5.77 ± 5%	0.50	1.85	3.43 ± 13.1% (k=2)
5800	± 50 / ± 100	Body	48.2 ± 5%	6.00 ± 5%	0.50	1.85	3.74 ± 13.1% (k=2)

^c The validity of ± 100 MHz only applies for DASY v4.4 and higher (see Page 2). The uncertainty is the RSS of the ConvF uncertainty at calibration frequency and the uncertainty for the indicated frequency band.

**Calibration Laboratory of
Schmid & Partner
Engineering AG**
Zeughausstrasse 43, 8004 Zurich, Switzerland



S Schweizerischer Kalibrierdienst
C Service suisse d'étalonnage
S Servizio svizzero di taratura
S Swiss Calibration Service

Accredited by the Swiss Accreditation Service (SAS)
The Swiss Accreditation Service is one of the signatories to the EA
Multilateral Agreement for the recognition of calibration certificates

Accreditation No.: **SCS 108**

Client: **AT4wireless**

Certificate No: **D2450V2-756_Jun09**

CALIBRATION CERTIFICATE

Object: **D2450V2 - SN: 756**

Calibration procedure(s): **QA CAL-05.v7
Calibration procedure for dipole validation kits**

Calibration date: **June 19, 2009**

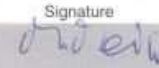

Condition of the calibrated item: **In Tolerance**

This calibration certificate documents the traceability to national standards, which realize the physical units of measurements (SI).
The measurements and the uncertainties with confidence probability are given on the following pages and are part of the certificate.

All calibrations have been conducted in the closed laboratory facility: environment temperature (22 ± 3)°C and humidity < 70%.

Calibration Equipment used (M&TE critical for calibration)

Primary Standards	ID #	Cal Date (Calibrated by, Certificate No.)	Scheduled Calibration
Power meter EPM-442A	GB37480704	08-Oct-08 (No. 217-00898)	Oct-09
Power sensor HP 8481A	US37292783	08-Oct-08 (No. 217-00898)	Oct-09
Reference 20 dB Attenuator	SN: 5086 (20g)	31-Mar-09 (No. 217-01025)	Mar-10
Type-N mismatch combination	SN: 5047.2 / 06327	31-Mar-09 (No. 217-01029)	Mar-10
Reference Probe ES3DV2	SN: 3025	28-Apr-08 (No. ES3-3025_Apr08)	Apr-09
Reference Probe ES3DV2	SN: 3025	30-Apr-09 (No. ES3-3025_Apr09)	Apr-10
DAE4	SN: 601	07-Mar-09 (No. DAE4-601_Mar09)	Mar-10
Secondary Standards	ID #	Check Date (in house)	Scheduled Check
Power sensor HP 8481A	MY41092317	18-Oct-02 (in house check Oct-07)	In house check: Oct-09
RF generator R&S SMT-06	100005	4-Aug-99 (in house check Oct-07)	In house check: Oct-09
Network Analyzer HP 8753E	US37390585 S4206	18-Oct-01 (in house check Oct-08)	In house check: Oct-09

Calibrated by:	Name	Function	Signature
	Mike Meili	Laboratory Technician	
Approved by:	Katja Pokovic	Technical Manager	

Issued: June 19, 2009

This calibration certificate shall not be reproduced except in full without written approval of the laboratory.

Measurement Conditions

DASY system configuration, as far as not given on page 1.

DASY Version	DASY5	V5.0
Extrapolation	Advanced Extrapolation	
Phantom	Modular Flat Phantom V5.0	
Distance Dipole Center - TSL	10 mm	with Spacer
Zoom Scan Resolution	dx, dy, dz = 5 mm	
Frequency	2450 MHz ± 1 MHz	

Head TSL parameters

The following parameters and calculations were applied.

	Temperature	Permittivity	Conductivity
Nominal Head TSL parameters	22.0 °C	39.2	1.80 mho/m
Measured Head TSL parameters	(22.0 ± 0.2) °C	40.4 ± 6 %	1.78 mho/m ± 6 %
Head TSL temperature during test	(22.4 ± 0.2) °C	----	----

SAR result with Head TSL

SAR averaged over 1 cm ³ (1 g) of Head TSL	Condition	
SAR measured	250 mW input power	13.3 mW / g
SAR normalized	normalized to 1W	53.2 mW / g
SAR for nominal Head TSL parameters ¹	normalized to 1W	53.9 mW /g ± 17.0 % (k=2)

SAR averaged over 10 cm ³ (10 g) of Head TSL	condition	
SAR measured	250 mW input power	6.29 mW / g
SAR normalized	normalized to 1W	25.2 mW / g
SAR for nominal Head TSL parameters ¹	normalized to 1W	25.3 mW /g ± 16.5 % (k=2)

¹ Correction to nominal TSL parameters according to d), chapter "SAR Sensitivities"

Body TSL parameters

The following parameters and calculations were applied.

	Temperature	Permittivity	Conductivity
Nominal Body TSL parameters	22.0 °C	52.7	1.95 mho/m
Measured Body TSL parameters	(22.0 ± 0.2) °C	53.2 ± 6 %	2.00 mho/m ± 6 %
Body TSL temperature during test	(21.5 ± 0.2) °C	----	----

SAR result with Body TSL

SAR averaged over 1 cm ³ (1 g) of Body TSL	Condition	
SAR measured	250 mW input power	13.4 mW / g
SAR normalized	normalized to 1W	53.6 mW / g
SAR for nominal Body TSL parameters ²	normalized to 1W	53.0 mW /g ± 17.0 % (k=2)

SAR averaged over 10 cm ³ (10 g) of Body TSL	condition	
SAR measured	250 mW input power	6.27 mW / g
SAR normalized	normalized to 1W	25.1 mW / g
SAR for nominal Body TSL parameters ²	normalized to 1W	25.0 mW /g ± 16.5 % (k=2)

² Correction to nominal TSL parameters according to d), chapter "SAR Sensitivities"

**Calibration Laboratory of
Schmid & Partner
Engineering AG**
Zeughausstrasse 43, 8004 Zurich, Switzerland



S Schweizerischer Kalibrierdienst
C Service suisse d'étalonnage
S Servizio svizzero di taratura
S Swiss Calibration Service

Accredited by the Swiss Accreditation Service (SAS)
The Swiss Accreditation Service is one of the signatories to the EA
Multilateral Agreement for the recognition of calibration certificates

Accreditation No.: **SCS 108**

Client **AT4 Wireless**

Certificate No: **D5GHzV2-1071_Mar09**

CALIBRATION CERTIFICATE

Object: **D5GHzV2 - SN: 1071**

Calibration procedure(s): **QA CAL-22.v1
Calibration procedure for dipole validation kits between 3-6 GHz**

Calibration date: **March 13, 2009**



Condition of the calibrated item: **In Tolerance**

This calibration certificate documents the traceability to national standards, which realize the physical units of measurements (SI).
The measurements and the uncertainties with confidence probability are given on the following pages and are part of the certificate.

All calibrations have been conducted in the closed laboratory facility: environment temperature (22 ± 3)°C and humidity < 70%.

Calibration Equipment used (M&TE critical for calibration)

Primary Standards	ID #	Cal Date (Certificate No.)	Scheduled Calibration
Power meter EPM-442A	GB37480704	08-Oct-08 (No. 217-00898)	Oct-09
Power sensor HP 8481A	US37292783	08-Oct-08 (No. 217-00898)	Oct-09
Reference 20 dB Attenuator	SN: 5086 (20g)	01-Jul-08 (No. 217-00864)	Jul-09
Type-N mismatch combination	SN: 5047.2 / 06327	01-Jul-08 (No. 217-00867)	Jul-09
Reference Probe EX3DV4	SN: 3503	11-Mar-09 (No. EX3-3503_Mar09)	Mar-10
DAE4	SN: 601	07-Mar-09 (No. DAE4-601_Mar09)	Mar-10
Secondary Standards	ID #	Check Date (in house)	Scheduled Check
Power sensor HP 8481A	MY41092317	18-Oct-02 (in house check Oct-07)	In house check: Oct-09
RF generator R&S SMT-06	100005	4-Aug-99 (in house check Oct-07)	In house check: Oct-09
Network Analyzer HP 8753E	US37390585 S4206	18-Oct-01 (in house check Oct-08)	In house check: Oct-09

	Name	Function	Signature
Calibrated by:	Jeton Kastrati	Laboratory Technician	
Approved by:	Katja Pokovic	Technical Manager	

Issued: March 17, 2009

This calibration certificate shall not be reproduced except in full without written approval of the laboratory.

Measurement Conditions

DASY system configuration, as far as not given on page 1.

DASY Version	DASY5	V5.0
Extrapolation	Advanced Extrapolation	
Phantom	Modular Flat Phantom V5.0	
Distance Dipole Center - TSL	10 mm	with Spacer
Area Scan resolution	dx, dy = 10 mm	
Zoom Scan Resolution	dx, dy = 4.0 mm, dz = 2.5 mm	
Frequency	5200 MHz \pm 1 MHz 5800 MHz \pm 1 MHz	

Head TSL parameters at 5200 MHz

The following parameters and calculations were applied.

	Temperature	Permittivity	Conductivity
Nominal Head TSL parameters	22.0 °C	36.0	4.66 mho/m
Measured Head TSL parameters	(22.0 \pm 0.2) °C	35.4 \pm 6 %	4.53 mho/m \pm 6 %
Head TSL temperature during test	(22.0 \pm 0.2) °C	---	---

SAR result with Head TSL at 5200 MHz

SAR averaged over 1 cm ³ (1 g) of Head TSL	condition	
SAR measured	100 mW input power	7.69 mW / g
SAR normalized	normalized to 1W	76.9 mW / g
SAR for nominal Head TSL parameters ¹	normalized to 1W	76.6 mW / g \pm 19.9 % (k=2)

SAR averaged over 10 cm ³ (10 g) of Head TSL	condition	
SAR measured	100 mW input power	2.16 mW / g
SAR normalized	normalized to 1W	21.6 mW / g
SAR for nominal Head TSL parameters ¹	normalized to 1W	21.5 mW / g \pm 19.5 % (k=2)

¹ Correction to nominal TSL parameters according to c), chapter "SAR Sensitivities"

Head TSL parameters at 5800 MHz

The following parameters and calculations were applied.

	Temperature	Permittivity	Conductivity
Nominal Head TSL parameters	22.0 °C	35.3	5.27 mho/m
Measured Head TSL parameters	(22.0 ± 0.2) °C	34.3 ± 6 %	5.08 mho/m ± 6 %
Head TSL temperature during test	(22.0 ± 0.2) °C	---	---

SAR result with Head TSL at 5800 MHz

SAR averaged over 1 cm ³ (1 g) of Head TSL	condition	
SAR measured	100 mW input power	7.66 mW / g
SAR normalized	normalized to 1W	76.6 mW / g
SAR for nominal Head TSL parameters ¹	normalized to 1W	76.1 mW / g ± 19.9 % (k=2)

SAR averaged over 10 cm ³ (10 g) of Head TSL	condition	
SAR measured	100 mW input power	2.14 mW / g
SAR normalized	normalized to 1W	21.4 mW / g
SAR for nominal Head TSL parameters ¹	normalized to 1W	21.2 mW / g ± 19.5 % (k=2)

¹ Correction to nominal TSL parameters according to c), chapter "SAR Sensitivities"

Body TSL parameters at 5200 MHz

The following parameters and calculations were applied.

	Temperature	Permittivity	Conductivity
Nominal Body TSL parameters	22.0 °C	49.0	5.30 mho/m
Measured Body TSL parameters	(22.0 ± 0.2) °C	47.7 ± 6 %	5.30 mho/m ± 6 %
Body TSL temperature during test	(21.2 ± 0.2) °C	---	---

SAR result with Body TSL at 5200 MHz

SAR averaged over 1 cm ³ (1 g) of Body TSL	condition	
SAR measured	100 mW input power	7.61 mW / g
SAR normalized	normalized to 1W	76.1 mW / g
SAR for nominal Body TSL parameters ²	normalized to 1W	75.7 mW / g ± 19.9 % (k=2)

SAR averaged over 10 cm ³ (10 g) of Body TSL	condition	
SAR measured	100 mW input power	2.12 mW / g
SAR normalized	normalized to 1W	21.2 mW / g
SAR for nominal Body TSL parameters ²	normalized to 1W	21.1 mW / g ± 19.5 % (k=2)

Body TSL parameters at 5800 MHz

The following parameters and calculations were applied.

	Temperature	Permittivity	Conductivity
Nominal Body TSL parameters	22.0 °C	48.2	6.00 mho/m
Measured Body TSL parameters	(22.0 ± 0.2) °C	46.3 ± 6 %	6.05 mho/m ± 6 %
Body TSL temperature during test	(21.0 ± 0.2) °C	---	---

SAR result with Body TSL at 5800 MHz

SAR averaged over 1 cm ³ (1 g) of Body TSL	condition	
SAR measured	100 mW input power	7.25 mW / g
SAR normalized	normalized to 1W	72.5 mW / g
SAR for nominal Body TSL parameters ²	normalized to 1W	71.9 mW / g ± 19.9 % (k=2)

SAR averaged over 10 cm ³ (10 g) of Body TSL	condition	
SAR measured	100 mW input power	1.99 mW / g
SAR normalized	normalized to 1W	19.9 mW / g
SAR for nominal Body TSL parameters ²	normalized to 1W	19.7 mW / g ± 19.5 % (k=2)

² Correction to nominal TSL parameters according to c), chapter "SAR Sensitivities"

**Calibration Laboratory of
Schmid & Partner
Engineering AG**
Zeughausstrasse 43, 8004 Zurich, Switzerland



S Schweizerischer Kalibrierdienst
C Service suisse d'étalonnage
S Servizio svizzero di taratura
S Swiss Calibration Service

Accredited by the Swiss Accreditation Service (SAS)
The Swiss Accreditation Service is one of the signatories to the EA
Multilateral Agreement for the recognition of calibration certificates

Accreditation No.: **SCS 108**

Client **AT4 Wireless**

Certificate No: **D5GHzV2-1071_Apr09**

CALIBRATION CERTIFICATE

Object: **D5GHzV2 - SN: 1071**

Calibration procedure(s): **QA CAL-22.v1
Calibration procedure for dipole validation kits between 3-6 GHz**

Calibration date: **April 28, 2009**

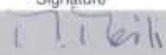
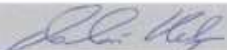
Condition of the calibrated item: **In Tolerance**

This calibration certificate documents the traceability to national standards, which realize the physical units of measurements (SI).
The measurements and the uncertainties with confidence probability are given on the following pages and are part of the certificate.

All calibrations have been conducted in the closed laboratory facility: environment temperature (22 ± 3)°C and humidity < 70%.

Calibration Equipment used (M&TE critical for calibration)

Primary Standards	ID #	Cal Date (Certificate No.)	Scheduled Calibration
Power meter EPM-442A	GB37480704	08-Oct-08 (No. 217-00898)	Oct-09
Power sensor HP 8481A	US37292783	08-Oct-08 (No. 217-00898)	Oct-09
Reference 20 dB Attenuator	SN: 5086 (20g)	01-Jul-08 (No. 217-00864)	Jul-09
Type-N mismatch combination	SN: 5047.2 / 06327	01-Jul-08 (No. 217-00867)	Jul-09
Reference Probe EX3DV4	SN: 3503	11-Mar-09 (No. EX3-3503_Mar09)	Mar-10
DAE4	SN: 601	07-Mar-09 (No. DAE4-601_Mar09)	Mar-10
Secondary Standards	ID #	Check Date (in house)	Scheduled Check
Power sensor HP 8481A	MY41092317	18-Oct-02 (in house check Oct-07)	In house check: Oct-09
RF generator R&S SMT-06	100005	4-Aug-99 (in house check Oct-07)	In house check: Oct-09
Network Analyzer HP 8753E	US37390585 S4206	18-Oct-01 (in house check Oct-08)	In house check: Oct-09

	Name	Function	Signature
Calibrated by:	Mike Meili	Laboratory Technician	
Approved by:	Katja Pokovic	Technical Manager	

Issued: April 30, 2009

This calibration certificate shall not be reproduced except in full without written approval of the laboratory.

Measurement Conditions

DASY system configuration, as far as not given on page 1.

DASY Version	DASY5	V5.0
Extrapolation	Advanced Extrapolation	
Phantom	Modular Flat Phantom V5.0	
Distance Dipole Center - TSL	10 mm	with Spacer
Area Scan resolution	dx, dy = 10 mm	
Zoom Scan Resolution	dx, dy = 4.0 mm, dz = 2.5 mm	
Frequency	5500 MHz \pm 1 MHz	

Head TSL parameters at 5500 MHz

The following parameters and calculations were applied.

	Temperature	Permittivity	Conductivity
Nominal Head TSL parameters	22.0 °C	35.6	4.96 mho/m
Measured Head TSL parameters	(22.0 \pm 0.2) °C	35.1 \pm 6 %	4.83 mho/m \pm 6 %
Head TSL temperature during test	(22.5 \pm 0.2) °C	----	----

SAR result with Head TSL at 5500 MHz

SAR averaged over 1 cm ³ (1 g) of Head TSL	condition	
SAR measured	100 mW input power	8.17 mW / g
SAR normalized	normalized to 1W	81.7 mW / g
SAR for nominal Head TSL parameters ¹	normalized to 1W	81.4 mW / g \pm 19.9 % (k=2)

SAR averaged over 10 cm ³ (10 g) of Head TSL	condition	
SAR measured	100 mW input power	2.29 mW / g
SAR normalized	normalized to 1W	22.9 mW / g
SAR for nominal Head TSL parameters ¹	normalized to 1W	22.8 mW / g \pm 19.5 % (k=2)

¹ Correction to nominal TSL parameters according to c), chapter "SAR Sensitivities"

Body TSL parameters at 5500 MHz

The following parameters and calculations were applied.

	Temperature	Permittivity	Conductivity
Nominal Body TSL parameters	22.0 °C	48.6	5.65 mho/m
Measured Body TSL parameters	(22.0 ± 0.2) °C	46.8 ± 6 %	5.74 mho/m ± 6 %
Body TSL temperature during test	(21.8 ± 0.2) °C	----	----

SAR result with Body TSL at 5500 MHz

SAR averaged over 1 cm ³ (1 g) of Body TSL	condition	
SAR measured	100 mW input power	8.17 mW / g
SAR normalized	normalized to 1W	81.7 mW / g
SAR for nominal Body TSL parameters ²	normalized to 1W	81.1 mW / g ± 19.9 % (k=2)

SAR averaged over 10 cm ³ (10 g) of Body TSL	condition	
SAR measured	100 mW input power	2.26 mW / g
SAR normalized	normalized to 1W	22.6 mW / g
SAR for nominal Body TSL parameters ²	normalized to 1W	22.4 mW / g ± 19.5 % (k=2)

² Correction to nominal TSL parameters according to c), chapter "SAR Sensitivities"