



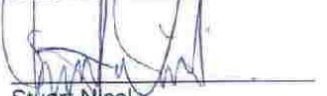
SAR & HAC Instruments for Wireless • Consulting • Research • Standards • Compliance • Training


Applicant Name: Intel Corporation
Applicant Address: Intel Corporation
 2111 Ne 25th Avenue JF3-3-G14,
 Hillsboro, OR 97124
Project Number: ITLB-len-WNC-5472
Test/Analysis Date: September 2009

| | |
|--|---|
| DUT Type | Intel WiFi-Link 533ANH |
| Antenna Type | WNC 20017(4186) |
| Project Name | LeNovo |
| Received Status | Pre Production Model |
| DUT Serial Number | NNIWBA0171 |
| Experimental/Compliance | Compliance-FCC |
| Tx Frequency | 2412MHz to 2462MHz 802.11bg(n) 5180MHz to 5320MHz 802.11a(n) 5500MHz to 5700MHz 802.11a(n) 5745MHz to 5825MHz 802.11a(n) |
| Max Tx Power | 802.11bg = 18.34dBm 2450n = 18.25dBm 802.11a = 16.62dBm 802.11an = 18.5dBm |
| Conservative Averaged SAR (RF Exposure) | 802.11b 2437MHz = 0.080 802.11g 2437MHz = 0.054 802.11n 2462MHz = 0.071 802.11n* 2462MHz = 0.037 802.11a 5180MHz = 0.539 802.11n 5180MHz = 0.624 802.11n* 5190MHz = 0.750 802.11a 5600MHz = 0.598 802.11n 5600MHz = 0.600 802.11n* 5590MHz = 0.669 802.11a 5745MHz = 0.622 802.11n 5745MHz = 0.572 802.11n* 5755MHz = 0.665 NOTE: 802.11n = 20MHz / 802.11n* = 40MHz |

We the undersigned of APREL Laboratories, located at 17 Bentley Ave, Ottawa, Ontario, Canada, K2E 6T7, on the date indicated attest that the Device Under Test as detailed within this test report has been tested and found to be compliant with the Uncontrolled Environment RF exposure rules and regulations as defined by the methodologies, procedures, and standards as described in this document. Signed this day September 28th 2009.


 Art Brennan
 Document Control


 Stuart Nicol,
 Director Product Development


 Dr Jacek J. Wojcik,
 P. Engineer





SAR & HAC Instruments for Wireless • Consulting • Research • Standards • Compliance • Training

Table of Contents

1.0 Introduction 3

2.0 Applicable Documents 6

3.0 ALSAS-10U System Description 7

3.1 Applications 8

3.2 Visualisation and reporting 8

3.3 Field scans 8

3.3.1 Area Scans 8

3.3.2 Zoom Scan (Cube Scan Averaging) 9

3.4 Operator settings 9

3.5 ALSAS-10U Interpolation and Extrapolation Uncertainty 9

4.0 ALSAS-10U Hardware 10

4.1 Isotropic E-Field Probe 10

4.2 Isotropic E-Field Probe Specification 11

4.3 Boundary Detection Unit and Probe Mounting Device 12

4.4 Daq-Paq (Analog to Digital Electronics) 12

4.5 Axis Articulated Robot 13

4.6 ALSAS Universal Workstation 13

4.7 Universal Device Positioner 14

4.8 Phantom Types 15

4.8.1 APREL SAM Phantoms 15

4.8.2 APREL Laboratories Universal Phantom 16

4.9 Validation Dipoles 17

5.0 Tissue Simulation Fluid 18

5.1 Tissue Calibration Procedure Using a Coaxial Probe 19

5.2 Tissue Calibration Results 19

6.0 System Validation 20

6.1 Experimental Results Summary 21

6.2 SAR Measurement Procedure 21

6.3 SAR Exposure Limits 21

6.4 Equipment List 22

6.5 SAR Measurement Results 23

Appendix A SAR Plots



1.0 Introduction

Tests were conducted at APREL Laboratories within the ISO 17025 accredited SAR facility to establish the conservative exposure value associated with the Device Under Test as detailed within this test report. Assessments were made in line with the guidelines contained in the reference documents. The method used for assessment was the ALSAS-10U (APREL Laboratories SAR Assessment System-10 Universal). All practices along with standards and scientific methodologies which have been utilized during the assessment of the Device Under Test (DUT) are detailed within this test report.

APREL Laboratories employees currently hold senior and executive positions in multiple international standards organizations, including IEC, IEEE, among others, and work closely with several national regulators, including the FCC and IC. APREL Laboratories currently hold the chair for the Canadian National committee to IEC to which we have a liaison with CENELEC, and informal links to other national and international standards organizations.

1.2 Device Description

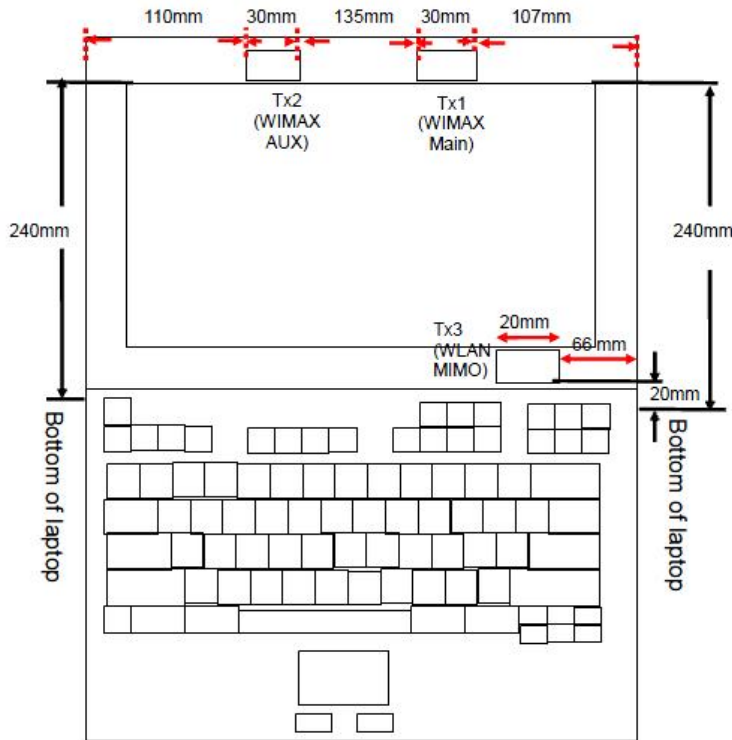
The tests conducted on a LENOVO laptop computer which utilises a set of WNC antennas running the Intel Wireless link 533 network card which operates on the WiFi 802.11ang modes. The card was connected to the antennas with the DUT set to transmit at the maximum power as defined by the manufacturer and analysis was ran on the antenna and position which showed the highest SAR. Software provided by Intel was used to set the 533 network card to transmit and both average and peak power measurements were made to determine the maximum transmitting power. The card was operated utilizing proprietary software and each channel was measured using a broadband power meter to determine the maximum average power on the antenna port of the wireless card for WiFi assessments. The card can operate in MIMO mode and other antenna chains were assessed. No other antenna configuration as per the test plan showed a higher or more conservative SAR.

See setup pictures

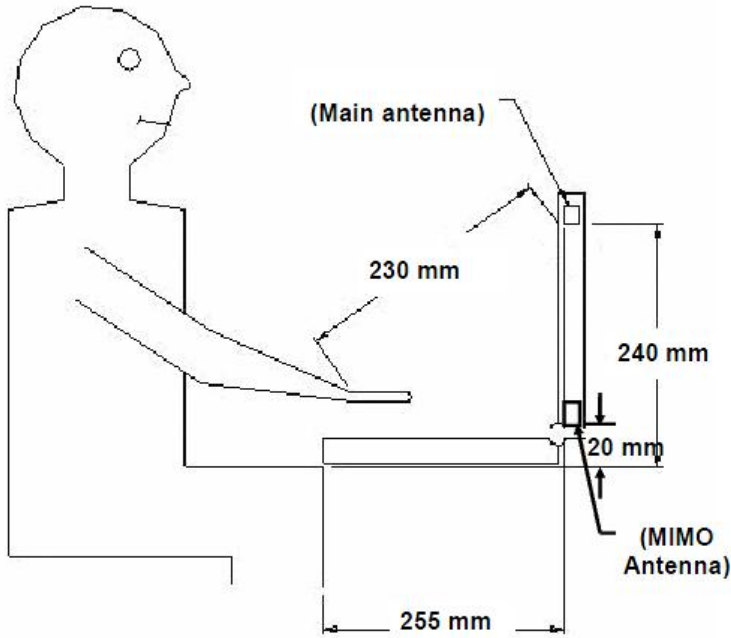
NOTE: The laptop was tested with 0mm separation for all positions.

1.3 Antenna Locations

The antennas on the LENOVO laptop with the Intel® WiFi-Link 533 Series card installed are located within the chassis as identified in the image below. The antennas are located around the LCD and at the base of the LCD. For this model of laptop 2 types of antennas were provided although they were made by the same manufacturer and had similar gains additional measurements were made to ensure that the SAR is still below the 1.6 W/kg average. The data from this analysis is included in the test results section of this report. All data relates to the 2 platforms which had the antenna model number 20017(4180).



Antenna Locations



1.4 Additional SAR Measurements

The maximum SAR was measured on the antenna which was located in the base but additional measurements were made on the antenna which was located at the top of the LCD. Where the measurements were made on the antenna at the top of the LCD the SAR was less than 0.012 W/kg at the conservative configuration.

2.0 Applicable Documents

ANSI/IEEE C95.1-1999, IEEE Standard for Safety Levels with Respect to Human Exposure to Radio Frequency Electromagnetic Fields, 3 kHz to 300 GHz.

ANSI/IEEE C95.3-1992, IEEE Recommended Practice for the Measurement of Potentially Hazardous Electromagnetic Fields – RF and Microwave.

OET Bulletin 65 (Edition 97-01) Supplement C (Edition 01-01), “Evaluating Compliance with FCC Guidelines for Human Exposure to Radio Frequency Electromagnetic Fields”.

OET Laboratory Division FCC (December 2007) SAR Evaluation Considerations for Laptop Computers with Antennas Built –in on Display Screens

OET Laboratory Division FCC (May 2007 Revised) SAR Measurement Procedures for 802.11abg Transmitters

OET Laboratory Division FCC (October 2006) SAR Measurement Procedures for 3-6GHz

IEEE 1528b “Recommended Practice for Determining the Peak Spatial Average Specific Absorption Rate (SAR) in the Human Body Due to Wireless Communication Devices: Experimental Techniques.”

ICNIRP Guidelines “GUIDELINES FOR LIMITING EXPOSURE TO TIME-VARYING ELECTRIC, MAGNETIC, AND ELECTROMAGNETIC FIELDS (UP TO 300 GHz)”

IEC-62209 “Human exposure to radio frequency fields from hand-held and body-mounted wireless communication devices – Human models, instrumentation, and procedures”
 Part 1: “Procedure to determine the Specific Absorption Rate (SAR) for hand-held devices used in close proximity of the ear (frequency range of 300 MHz to 3 GHz)”

IEC-62209 “Human exposure to radio frequency fields from hand-held and body-mounted wireless communication devices – Human models, instrumentation, and procedures”
 Part 2 *Draft*: “Procedure to determine the Specific Absorption Rate (SAR) for hand-held devices used in close proximity of the ear (frequency range of 30 MHz to 6 GHz)”

OET Laboratory Division FCC Mobile and Portable Device RF Exposure Equipment Authorization Procedures KDB -447498

OET Laboratory Division FCC Permit But Ask Procedure KDB-388624

3.0 ALSAS-10U System Description

APREL Laboratories ALSAS-10-U (APREL Laboratories SAR Assessment System) is fully optimized for the dosimetric evaluation of a broad range of wireless transceivers and antennas. It is an easy-to-use development and compliance tool, which provides excellent application flexibility. Developed in line with the latest methodologies it is fully compliant with the technical and scientific requirements of IEEE 1528, IEC 62212/62209, CENELEC, ARIB, ACA, and the Federal Communications Commission. The system comprises of a six axes articulated robot which utilizes a dedicated controller.

ALSAS-10U has been developed with a strong engineering focus, and with custom modular software/hardware for the broadest range of applications, including dosimetry research and measurements in various Phantoms – SAM Phantom, UniPhantom™ Universal Phantom, Universal Flat Phantom and others.

Free space E-Field measurements of mobile devices and base station antennas can also be executed using ALSAS. With the current ALSAS configuration, several phantoms and setups can be arranged around the system – and since the phantoms are designed to be light and easy to move for interchanging between test frequencies.

ALSAS-10U has been developed using the latest methodologies and FDTD modeling to provide a platform which is repeatable with minimum uncertainty.

The ongoing commitment from APREL Laboratories to the field of Dosimetric research and development will ensure that the ALSAS-10-U measurement system can easily be upgraded to accommodate changes to wireless technologies, and scientific methodologies.



3.1 Applications

Predefined measurement procedures compliant with the guidelines of CENELEC, IEEE, IEC, FCC, etc are utilized during the assessment for the device. Automatic detection for all SAR maxima are embedded within the core architecture for the system, ensuring that peak locations used for centering the zoom scan are within a 1mm resolution and a 0.05mm repeatable position. A little less than 10 min per device position measurement completion time, (depending of DUT size) ensures minimum power drift during the assessment. No user interaction is required during the measurement processes: area scan, evaluation of cube maximal search, fine cube measurements and device power drift measurement. System operation range currently available up-to 6 GHz in simulated tissue.

ALSAS-10U can be used for all analog and digital devices, including wideband, spread spectrum and pulsed systems, etc.: handsets, handhelds, wireless data, electronic article surveillance, accessories, wireless access points, WLAN, cordless, radio, etc.

3.2 Visualization and reporting

2/3D isoline distribution, scatter graphics, polar graphics, and vector reproduction. Device representation and phantom visualization in 2/3D graphics with measurement data overlaid (in color plot format). Freely configurable output graphic formats with automatic title, data and legend generation which includes all relevant information relating to the measurement process. Uncertainty analysis and budget calculated and reported drawing on active device drift assessment, and tissue simulation values.

3.3 Field scans

ALSAS-10U can provide multiple scan types including Measurements along lines (X, Y, Z), multiple planes, curved surfaces (normalize probe to surface), volumes in free space or restricted volumes (phantoms). Cube measurements with surface extrapolation and spatial SAR evaluation for 1g and/or 10g. Time measurements (source power drift). Probe rotation measurements (isotropy) and many others in line with the requirements of any given standard or procedure.

3.3.1 Area Scans

Area scans are defined prior to the measurement process being executed with a user defined variable spacing between each measurement point (integral) allowing low uncertainty measurements to be conducted. Scans defined for FCC applications utilize a 10mm² step integral, with 1mm interpolation used to locate the peak SAR area used for zoom scan assessments.

A maximum area scan size is set at 280mm x 200mm which can be changed to a smaller size dependent on the filed distribution of the device under test. The area scan size is documented within the SAR report which is delivered by the SAR system software.

Where the system identifies multiple SAR peaks (which are within 2dB of each peak value) the system will provide the user with the option of assessing each peak location individually for zoom scan averaging.

3.3.2 Zoom Scan (Cube Scan Averaging)

The averaging zoom scan volume utilized in the ALSAS-10U software is in the shape of a cube and the side dimension of a 1 g or 10 g mass is dependent on the density of the liquid representing the simulated tissue. A density of 1 000 kg/m³ is used to represent the head and body tissue density and not the phantom liquid density, in order to be consistent with the definition of the liquid dielectric properties, i.e. the side length of the 1 g cube is 10mm, with the side length of the 10 g cube 21,5mm.

When the cube intersects with the surface of the phantom, it is oriented so that 3 vertices touch the surface of the shell or the centre of a face is tangent to the surface. The face of the cube closest to the surface is modified in order to conform to the tangent surface. The centre of the cube and the tangential angle associated defines each face of the cube so that all transitional points follow this tangential angle.

The zoom scan integer steps can be user defined so as to reduce uncertainty, but normal practice for typical test applications (including FCC) utilize a physical step of 5x5x9 (8mmx8mmx4mm Fx <3GHz) and 9x9x17 (4mmx4mmx2mm Fx >3GHz) providing a volume of 32mm in the X & Y axis, and 32mm in the Z axis. All points remain tangential to the surface by utilizing the normalize (probe tilt) feature so as to reduce measurement uncertainty.

3.4 Operator settings

Multiple access levels (password protected) for parametric modifications/test scenarios in line with selected standards, including the FCC. Any number of predefined settings (probes, phantoms, liquids, devices, measurement procedures, etc.) can be stored for future use and repeatable assessments.

3.5 ALSAS-10U Interpolation and Extrapolation Uncertainty

The overall uncertainty for the methodology and algorithms that are used during the SAR calculation was evaluated using the data from IEEE 1528 based on the example f3 algorithm:

$$f_3(x, y, z) = A \frac{a^2}{\frac{a^2}{4} + x'^2 + y'^2} \cdot \left(e^{-\frac{2z}{a}} + \frac{a^2}{2(a + 2z)^2} \right)$$

4.0 ALSAS-10U Hardware

The ALSAS-10U comprises of hardware designed exclusively by APREL Laboratories based on methodologies presented in IEEE 1528, IEC 62212, CENELEC and FCC supplement C OET bulletin 65.

4.1 Isotropic E-Field Probe

The isotropic E-Field probe used by APREL Laboratories, has been fully calibrated and assessed for isotropicity, and boundary effect within a controlled environment. Depending on the frequency for which the probe is calibrated the method utilized for calibration will change. APREL Laboratories utilize a number of methods for calibrating probes, and these are outlined in the table below.

| Calibration Frequency (MHz) | Air Calibration | Tissue Calibration |
|-----------------------------|-----------------|--------------------|
| 300 | TEM Cell | Temperature |
| 450 | TEM Cell | Temperature |
| 835 | TEM Cell | Temperature |
| 900 | TEM Cell | Temperature |
| 1800 | TEM Cell | Temperature |
| 1900 | TEM Cell | Temperature |
| 2450 | Waveguide | Waveguide |
| 5200 | Waveguide | Waveguide |
| 5600 | Waveguide | Waveguide |
| 5800 | Waveguide | Waveguide |

The APREL Laboratories E-Field probe utilizes a triangular sensor arrangement as detailed in the diagram below.



SAR is assessed with a calibrated probe which moves at a default height of 1.4mm from the centre of the diode, which is mounted to the sensor, to the phantom surface (in the Z Axis). The 1.4mm offset height has been selected so as to minimize any resultant boundary effect due to the probe being in close proximity to the phantom surface.

The following algorithm is an example of the function used by the system for linearization of the output from the probe when measuring complex modulation schemes.

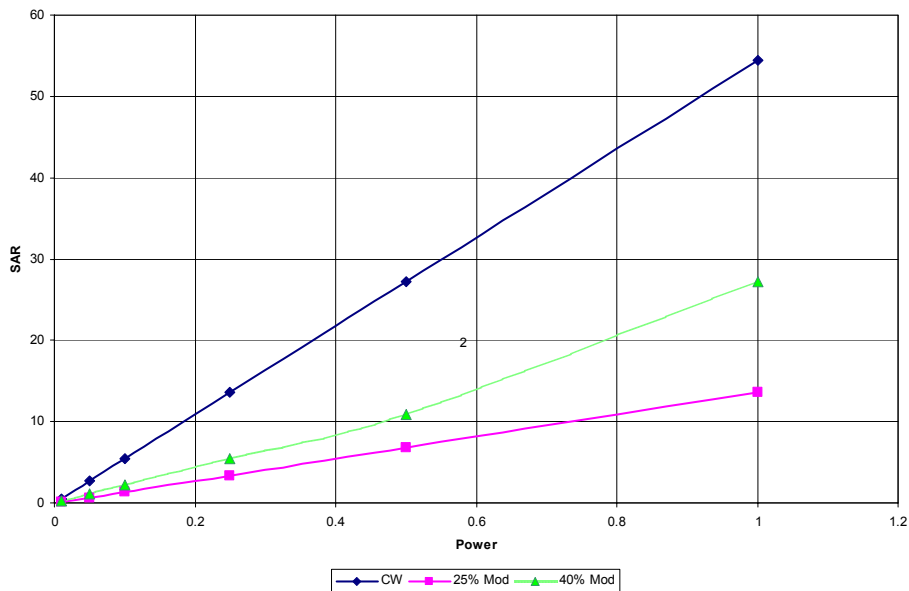
$$V_i = U_i + U_i^2 \cdot \frac{cf}{dcp_i}$$

4.2 Isotropic E-Field Probe Specification

| | |
|--------------------------------------|--|
| Calibration in Air | Frequency Dependent Below 2GHz Calibration in air performed in a TEM Cell Above 2GHz Calibration in air performed in waveguide |
| Sensitivity | 0.60 $\mu\text{V}/(\text{V}/\text{m})^2$ to 1.25 $\mu\text{V}/(\text{V}/\text{m})^2$ |
| Dynamic Range | 0.01 W/kg to 100 W/kg |
| Isotropic Response | Better than 0.2dB in air Better than 0.05dB in tissue |
| Diode Compression Point (DCP) | Calibrated for Specific Frequency typically 95mV +/- 10% |
| Probe Tip Radius | <2.9mm |
| Sensor Offset | 1.06 (+/-0.02mm) |
| Probe Length | 290mm |
| Video Bandwidth | @ 500 Hz: 1 dB @ 1.02 KHz: 3 dB |
| Boundary Effect | Less than 2% for distances greater than 1.4mm |
| Spatial Resolution | Better than 1mm |
| Probe Diameter | Less than 2.8mm |

4.3 Probe Calibration

For the purpose of WiMAX testing a separate probe calibration routine is ran where the probe is calibration using a 20MHz signal modulated to 25/40%. The results from this calibration are then compared against predicted data with respect to multiple duty cycles and the uncertainty is calculated to be less than 9% throughout the band with the maximum 40% duty cycle. The figure bellows shows the expected trend for the probe when calibrated following the advanced WiMAX routine.



Calculated Probe Output





SAR & HAC Instruments for Wireless • Consulting • Research • Standards • Compliance • Training

4.3 Boundary Detection Unit and Probe Mounting Device

ALSAS-10U incorporates a boundary detection unit with a sensitivity of 0.05mm for detecting all types of surfaces. The robust design allows for detection during probe tilt (probe normalize) exercises, and utilizes a second stage emergency stop. The signal electronics are fed directly into the robot controller for high accuracy surface detection in lateral and axial detection modes (X, Y, & Z).

The probe is mounted directly onto the Boundary Detection unit for accurate tooling and displacement calculations controlled by the robot kinematics. The probe is connect to an isolated probe interconnect where the output stage of the probe is fed directly into the amplifier stage of the Daq-Paq.

4.4 Daq-Paq (Analog to Digital Electronics)

ALSAS-10U incorporates a fully calibrated Daq-Paq (analog to digital conversion system) which has a 4 channel input stage, sent into an amplifier module. The input signal is amplified accordingly so as to offer a dynamic range from 5µV to 800mV. Integration of the fields measured is carried out at board level utilizing a Co-Processor which then sends the measured fields down into the main computational module in digitized form via an RS232 communications port. Probe linearization and duty cycle compensation is carried out within the main Daq-Paq module.

| | |
|---------------------------------|---|
| ADC | 16 Bit |
| Amplifier Range | 30 µV to +200 mV (16 bit resolution: 4µV, 400mV) |
| Field Integration | Local Co-Processor utilizing proprietary integration algorithms |
| Number of Input Channels | 4 in total 3 dedicated and 1 spare |
| Communication | Packet data via RS232 |



4.5 Axis Articulated Robot



ALSAS-10U utilizes a six axis articulated robot, which is controlled using a Pentium based real-time movement controller. The movement kinematics engine utilizes proprietary (Thermo CRS) interpolation and extrapolation algorithms, which allow full freedom of movement for each of the six joints within the working envelope. Utilization of joint 6 allows for full probe rotation with a tolerance better than 0.05mm around the central axis.

| | |
|--------------------------------------|-----------------------------------|
| Robot/Controller Manufacturer | Thermo CRS |
| Number of Axis | Six independently controlled axis |
| Positioning Repeatability | 0.05mm |
| Controller Type | Single phase Pentium based C500C |
| Robot Reach | 710mm |
| Communication | RS232 and LAN compatible |

4.6 ALSAS Universal Workstation

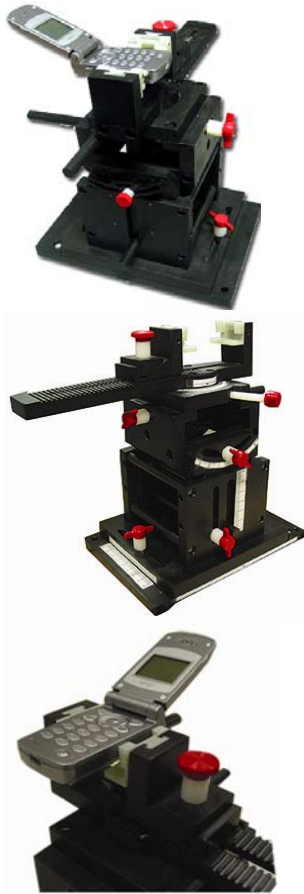
ALSAS Universal workstation was developed with a strong engineering focus taking into consideration flexibility and engineering needs, and the necessity to have integrated system which will allow for repeatability and fast adaptability. ALSAS workstation technology is stable and robust in structure, but at the same time flexible so that users can do calibration, testing and measurements using different types of phantoms with one set up, which significantly speeds up the measurement process.

The workstation incorporates a modular structure which can be easily adapted to specific engineering requirements and needs. Phantoms which are self contained modular units are easily located, removable and swappable. Three fully configurable shelves allow for setting up of a test device in a way which can either utilize the APREL Laboratories device positioner, or custom designed units. When using the modular shelf for positioning of a device, additional loading characteristics have been avoided.

The workstation has been constructed entirely out of composite wood and Canadian maple, with all metallic fasteners kept at a compliant distance from the Device under test.



4.7 Universal Device Positioner



The APREL Laboratories universal device positioner has been developed so as to allow complete freedom of movement of the DUT. Developed to hold a DUT in a free-space scenario any additional loading attributable to the material used in the construction of the positioner has been eliminated. Repeatability has been enhanced through the linear scales which form the design used to indicate positioning for any given test scenario in all major axes. A 15° tilt indicator has been included for the of aid cheek to tilt movements for head SAR analysis. Overall uncertainty for measurements have been reduced due to the design of the Universal device positioner, which allows positioning of a device in as near to a free-space scenario as possible, and by providing the means for complete repeatability.



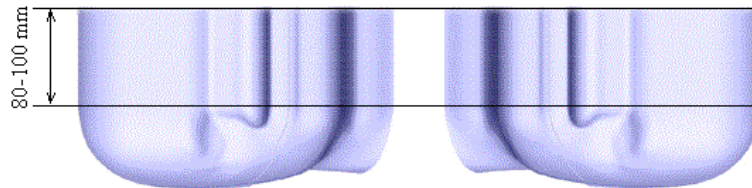
| | |
|--|---|
| Length | 201mm |
| Width | 140mm |
| Height | 222mm |
| Weight | 1.95kg |
| Number of Axis | 6 axis freedom of movement |
| Translation Along MB Line | +/- 76.2mm |
| Translation Along NF Line | +/- 38.1mm |
| Translation Along Z Axis | +/- 25.4mm (expandable to 500mm) |
| Rotation Around MB Line (yaw) | +/- 10° |
| Rotation Around NF Line (pitch) | +/- 30° |
| Rotation Around Z Axis (roll) | 360° full circle |
| Minimum Grip Range | 0mm |
| Maximum Grip | 152mm |
| Maximum Distance from Device to Positioner Material | 40mm |
| Tilt Movement | Full movement with predefined 15° guide |

4.8 Phantom Types

The ALSAS-10U has been designed so as to allow the integration of multiple phantom types. This includes but is not limited to the APREL Laboratories SAM Phantoms fully compliant with IEEE 1528, Universal Phantom, and Universal Flat.

4.8.1 APREL SAM Phantoms

The APREL Laboratories SAM phantoms have been designed so as to aid repeatability and positioning for any DUT. Developed using the IEEE SAM CAD file they are fully compliant with the requirements for both IEEE 1528 and FCC Supplement C. Both the left and right SAM phantoms are interchangeable, transparent and include the IEEE 1528 grid with visible NF and MB lines.



| | |
|---------------------------------|---|
| Compliant Standards | IEEE-1528, IEC 62212, CENELEC, and others |
| Manufacturing Process | Injection molded |
| Material | Composite urethane |
| Manufacturing Tolerance | +/- 0.2mm |
| Frame Material | Corian |
| Tissue Simulation Volume | 7 ltr with 15cm tissue |
| Thickness | 2mm nominally 6mm at NF/MB intersection |
| Loss Tangent | <0.05 |
| Relative Permittivity | <5 |
| Resistant to Solvents | Resistant to all solvents detailed in IEEE 1528 |
| Load Deflection | <1mm with sugar water compositions |

4.8.2 APREL Laboratories Universal Phantom



The APREL Laboratories Universal Phantom has been developed as an engineering tool for both compliance and development. It is also used on the ALSAS-10U as a system validation phantom. The unique design allows repeatable measurements for all devices, including handsets, PDA units, laptop computers, and validation dipoles. The APREL Laboratories Universal Phantom has been fully validated both experimentally from 800MHz to 6GHz and numerically using XFDTD numerical software. The shell thickness is 2mm overall, with a 4mm spacer located at the NF/MB intersection providing an overall thickness of 6mm in line with the requirements of IEEE-1528. The design allows for fast and accurate measurements, of handsets, by allowing the conservative SAR to be evaluated at on frequency for

both left and right head experiments in one measurement. The phantom is surrounded by a Corian frame, which adds additional support and load bearing characteristics.

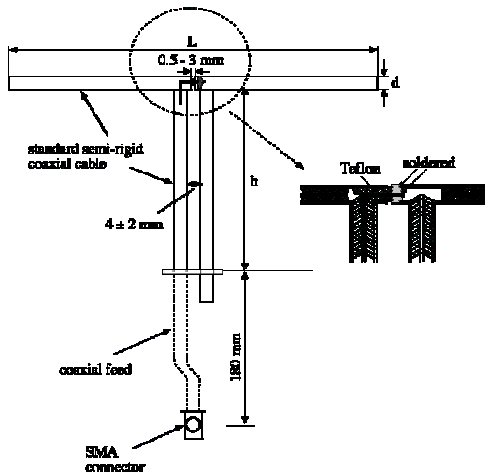
| | |
|---------------------------------|---|
| Compliant Standards | IEEE-1528, IEC 62212, CENELEC, and others |
| Frequency Range | 800MHz to 6GHz |
| Material | Vivac |
| Manufacturing Tolerance | +/- 0.2mm |
| Frame Material | Corian |
| Tissue Simulation Volume | 8 ltr with 15cm tissue |
| Thickness | 2mm nominally 6mm at NF/MB intersection |
| Loss Tangent | <0.05 |
| Relative Permittivity | <5 |
| Resistant to Solvents | Resistant to all solvents detailed in IEEE 1528 |
| Load Deflection | <1% Length with sugar water compositions |
| Dimensions | Length 220mm x breadth 170mm |



4.9 Validation Dipoles

APREL Laboratories utilize dipoles based on the IEEE-1528 standard, and have ensured that they comply with mechanical and electrical specifications in line with the requirements of both IEEE and FCC Supplement C. The table below provides details for the mechanical and electrical specifications for the dipoles used by APREL Laboratories.

Body validation target numbers have been derived using XFDTD numerical software, and validated experimentally.



APREL Laboratories have developed high frequency dipoles based on current scientific research carried both experimentally and numerically here at the APREL Laboratories site. Mechanical and electrical parameters for the dipoles have been established using experimental and numerical techniques, and target SAR values have been established following IEC methodologies. The results of the experimental and numerical research have been published and released for peer review.

| Frequency (MHz) | L (mm) | h (mm) | d (mm) |
|-----------------|--------|--------|--------|
| 300 | 396.0 | 250.0 | 6.0 |
| 450 | 270.0 | 166.7 | 6.0 |
| 835 | 161.0 | 89.8 | 3.6 |
| 900 | 149.0 | 83.3 | 3.6 |
| 1450 | 89.1 | 51.7 | 3.6 |
| 1800 | 72.0 | 41.7 | 3.6 |
| 1900 | 68.0 | 39.5 | 3.6 |
| 2000 | 64.5 | 37.5 | 3.6 |
| 2450 | 51.5 | 30.4 | 3.6 |
| 2600 | 49.0 | 30 | 3.6 |
| 3000 | 41.5 | 25.0 | 3.6 |
| 5200 | 23.6 | 14 | 3.6 |
| 5800 | 21.6 | 13 | 3.6 |
| 5190-5900 | 23.1 | 20.7 | 3.6 |

5.0 Tissue Simulation Fluid

Tissue simulation fluids in the frequency range of 450MHz to 2450MHz are based on IEEE-1528 and FCC Supplement C guidelines. All fluids meet the dielectric specifications as outlined in the above standards (within allowable tolerances) and are calibrated on a regular basis, to maintain stability. The recipes used along with the dielectric target values are included in the table below.

| Ingredients (% Weight) | 450 MHz Head | 835 MHz Head | 915 MHz Head | 1900 MHz Head | 2450 MHz Head |
|------------------------|--------------|--------------|--------------|---------------|---------------|
| Water | 38.56 | 41.45 | 41.05 | 54.9 | 62.7 |
| Salt | 3.95 | 1.45 | 1.35 | 0.18 | 0.5 |
| Sugar | 56.32 | 56.0 | 56.5 | x | x |
| HEC | 0.98 | 1.0 | 1.0 | x | x |
| Bactericide | 0.19 | 0.1 | 0.1 | 0.1 | X |
| Triton-X | X | X | X | X | 36.8 |
| DGBE | X | X | X | 44.92 | x |
| ϵ^r | 43.42 | 42.54 | 42.0 | 39.9 | 39.8 |
| δ | 0.85 | 0.91 | 1.0 | 1.42 | 1.88 |

| Ingredients (% Weight) | 450 MHz Body | 835 MHz Body | 915 MHz Body | 1900 MHz Body | 2450 MHz Body |
|------------------------|--------------|--------------|--------------|---------------|---------------|
| Water | 51.16 | 52.4 | 56.0 | 40.4 | 73.2 |
| Salt | 1.49 | 1.4 | 0.76 | 0.5 | 0.04 |
| Sugar | 46.78 | 45.0 | 41.76 | 58.0 | X |
| HEC | 0.52 | 1.0 | 1.21 | 1.0 | X |
| Bactericide | 0.05 | 0.1 | 0.27 | 0.1 | X |
| Triton-X | X | X | X | X | X |
| DGBE | X | X | X | X | 26.7 |
| ϵ^r | 58.0 | 56.1 | 56.8 | 54.0 | 52.5 |
| δ | 0.83 | 0.95 | 1.07 | 1.45 | 1.95 |

NOTE. Recipes are based on those presented in FCC Supplement C Page 36.

For frequencies above 2450MHz recipes will be presented as and when requested by a designated body.

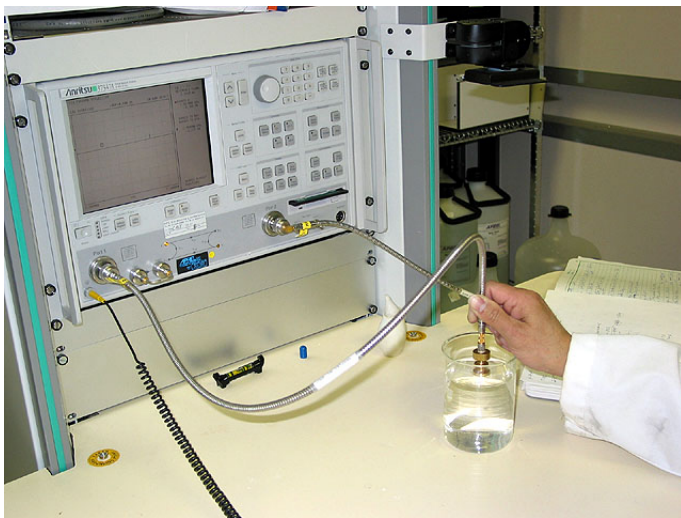
| Ingredients (% Weight) | 2600 MHz Body | 5200 MHz Body | 5600 MHz Body | 5800 MHz Body |
|------------------------|---------------|---------------|---------------|---------------|
| Water | 69.6 | x | x | x |
| Salt | 0.03 | x | x | x |
| Sugar | X | x | x | x |
| HEC | X | x | x | x |
| Bactericide | X | x | x | x |
| Triton-X | X | x | x | x |
| DGBE | 30.37 | x | x | x |
| ϵ^r | 52.4 | 48.9 | 47.6 | 48.2 |
| δ | 2.15 | 5.35 | 5.8 | 6.00 |



5.1 Tissue Calibration Procedure Using a Coaxial Probe

The VNA (Vector Network Analyzer) is configured and calibrated for the frequency of the simulated tissue which has to be assessed. The Coaxial probe is then calibrated in line with the tissue frequency using an open, short, and De-Ionized water routine. The sample of simulated tissue is placed into a non-metallic container for use during the calibration. The temperature of the simulated tissue sample is measured. The probe head is then completely immersed in the simulated tissue sample (the probe is held in place using a non metallic probe holder). The simulated tissue sample is then measured to assess the permittivity and conductivity.

5.2 Tissue Calibration Results



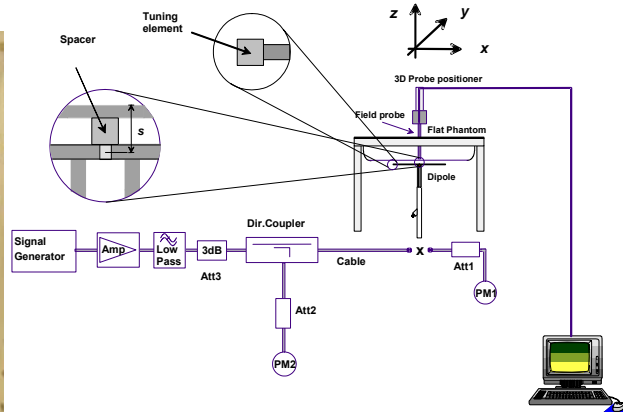
Tissue used during the SAR assessment is calibrated prior to use in the measurement process. APREL Laboratories use the co-axial probe method for all tissue calibration exercises. Tissue which is being used over a period of 24 hours is re-calibrated to ensure that no change to the dielectric properties will affect the SAR measurement process. The table below provides details of the results from the tissue equivalent dielectric calibration. This project was conducted over a period of 6 days and the tissues were calibrated daily to ensure that they met the values presented below.

| Calibrated By | Calibration Date | Frequency MHz | Tissue Type | Epsilon (ϵ') | Sigma (δ) |
|---------------|------------------|---------------|-------------|-------------------------|--------------------|
| Maryna. N | Daily | 2450 | Body | 51.66 | 1.90 |
| Maryna. N | Daily | 5200 | Body | 48.96 | 5.23 |
| Maryna. N | Daily | 5600 | Body | 47.89 | 5.81 |
| Maryna. N | Daily | 5800 | Body | 47.43 | 6.18 |

Variation of the tissue was maintained daily to be less than 2%.

6.0 System Validation

ALSAS-10U is fully validated prior to the SAR assessment of the DUT following methodologies presented in IEEE-1528 section 8. The system is validated using tissue which has been calibrated within a 24 hour period. When the measurement process exceeds a 24 hour period a secondary system validation is executed and the results presented within this test report. The graphic plots resulting from the system validation are included in Appendix A SAR plots.



| Date | Validation Frequency (MHZ) | Dipole Separation Distance mm | Power W | Dipole | SAR 1g W/kg | Target 1g W/kg |
|-------|----------------------------|-------------------------------|---------|------------|-------------|----------------|
| Daily | 2450 | 10 | 1.0 | AL-CD10 | 52.1 | 52.9 |
| Daily | 5200 | 10 | 1.0 | Broad-band | 52.4 | 51.8 |
| Daily | 5600 | 10 | 1.0 | Broad-band | 52.6 | 52.1 |
| Daily | 5800 | 10 | 1.0 | Broad-band | 50.3 | 49.1 |

Currently no standards are in place for validating a system while using body tissue. System validation and values are based on current guidance coming from the FCC and utilize the APREL Laboratories dipoles for frequencies above 5GHz. This project was conducted over a period of 6 working days and when necessary system validations were repeated when the test completion was greater than a 24 hour period. Where the system validation was greater than 2% from those presented above the tissue was then reassessed and brought back to within 2% of initial dielectric values to show consistency through the measurement cycle.

6.1 Experimental Results Summary

The results for each experimental assessment are contained within this section. Where any deviation has been made from the given procedures contained within IEEE-1528 or FCC Supplement C this has been described accordingly.

6.2 SAR Measurement Procedure

The ALSAS-10U calculates SAR using the following equation,

$$SAR = \frac{\sigma |E|^2}{\rho}$$

σ : represents the simulated tissue conductivity
 ρ : represents the tissue density

The DUT is set to transmit at the required power in line with product specification, at each frequency relating to the LOW, MID, and HIGH channel settings.

Pre-scans are made on the device to establish the location for the transmitting antenna, using a large area scan in either air or tissue simulation fluid.

The DUT is placed against the Universal Phantom where the maximum area scan dimensions are larger than the physical size of the resonating antenna. When the scan size is not large enough to cover the peak SAR distribution, it is modified by either extending the area scan size in both the X and Y directions, or the device is shifted within the predefined area.

The area scan is then run to establish the peak SAR location (interpolated resolution set at 1mm²) which is then used to orient the center of the zoom scan. The zoom scan is then executed and the 1g and 10g averages are derived from the zoom scan volume (interpolated resolution set at 1mm³).

6.3 SAR Exposure Limits

SAR assessments have been made in line with the requirements of the documents listed in section 2 of this report.

| Type of Exposure | Uncontrolled Environment Limit |
|--|--------------------------------|
| Spatial Peak SAR (1g cube tissue for brain or body) | 1.60 W/kg |
| Spatial Average SAR (whole body) | 0.08 W/kg |
| Spatial Peak SAR (10g for hands, feet, ankles and wrist) | 4.00 W/kg |



6.4 Equipment List

APREL Laboratories utilize the following equipment.

| Equipment Description | Asset/Serial Number | Calibration Date |
|---|---------------------|-------------------------------|
| ALSAS-10U | 301571 | Prior to Test and Every 24hrs |
| Boundary Detection Unit | 301572 | Calibrated Once |
| Daq-Paq | 301573 | January 2009 |
| Pentium 4 Workstation | 301574 | Not Required |
| Signal Generator | 301468 | CBT |
| Anritsu Power Meter | 301602 | September 2008 |
| Anritsu Power Sensor | 301603 | September 2008 |
| HP-Directional Coupler | 100251 | CBT |
| APREL Laboratories 800-4200MHz 12W Amplifier | 301577 | CBT |
| APREL Laboratories 2450MHz Validation Dipole | 301581 | November 2008 |
| APREL Laboratories E-030 E-Field Probe | 222 | January 2009 |
| 40MHz -20GHz VNA | 301382 | August 2009 |
| TRL Calibration Kit | 301582 | CBT |
| APREL Laboratories Coaxial Probe (Dielectric Probe Kit) | 100757 | CBT |
| APREL Laboratories Universal Phantom | 301511 | Calibrated Once |
| APREL Laboratories SAM Phantom LHS | 301500 | Calibrated Once |
| APREL Laboratories SAM Phantom RHS | 301501 | Calibrated Once |
| APREL Laboratories 15mm Dipole Separation Kit | 301546 | Calibrated Once |
| APREL Laboratories 10mm Dipole Separation Kit | 301547 | Calibrated Once |
| APREL Laboratories 5-6GHz 2 W Amplifier | 301692 | CBT |
| APREL Laboratories MMW Directional Coupler | NYA | March 2009 |
| APREL Laboratories 5240MHz Validation Dipole | 301460 | March 2009 |
| APREL Laboratories 5800MHz Validation Dipole | PT-015-a | March 2009 |
| ALSAS-10 Device Positioner ALS-H-E-SET-2 | ALS-H-E-SET-2-LAB1 | Not Required |
| APREL Laboratories 2600MHz Validation Dipole | ALS-WiMAX-2600 | July 12 th 2009 |
| Agilent ESG | 1059731 | Feb 6, 2009 |
| APREL Broad Band Dipole | ALS-BB-001 | May 2009 |

6.5 SAR Measurement Results

Intel® WiFi-Link 533 Series Network Connection with WNC Antennas **802.11b MODE**

| | |
|---------------------------------|-----------------|
| Power | 18.25dBm |
| DUT Position | Underside |
| Separation | 0mm |
| Antenna Type | IFA |
| Antenna Manufacturer | WNC |
| Antenna Location | Right Hand Side |
| Power Mode | Battery |
| Tx Frequency | 2412-2462MHz |
| Duty Cycle | 100% |
| Epsilon | 51.66 |
| Sigma | 1.90 |
| Tissue Depth | 15cm |
| Phantom Type | Universal |
| DUT Workstation Location | Centre |
| Device Positioner | Not Needed |
| Test Date | September 2009 |
| Test Engineer | Maryna. N |

| Mode | Separation Distance (mm) | Channel | Frequency MHz | 1g SAR W/kg |
|----------------|--------------------------|----------|---------------|--------------|
| 802.11b | 0 | 1 | 2412 | 0.055 |
| 802.11b | 0 | 6 | 2437 | 0.080 |
| 802.11b | 0 | 11 | 2462 | 0.062 |

Spot Check on second system with same antenna

| Mode | Separation Distance (mm) | Channel | Frequency MHz | 1g SAR W/kg |
|---------|--------------------------|---------|---------------|-------------|
| 802.11b | 0 | 6 | 2437 | 0.065 |

| | |
|---------------------------------|----------------------------------|
| SAR Limit | Conservative Measured SAR |
| 1.6 W/kg 1 gram Average Maximum | 0.080 W/kg 1gram Average |

SAR Plot for Conservative SAR Included in Appendix A.



Intel® WiFi-Link 533 Series Network Connection with WNC Antennas **802.11g MODE**

| | |
|---------------------------------|-----------------|
| Power | 18.25dBm |
| DUT Position | Underside |
| Separation | 0mm |
| Antenna Type | IFA |
| Antenna Manufacturer | WNC |
| Antenna Location | Right Hand Side |
| Power Mode | Battery |
| Tx Frequency | 2412-2462MHz |
| Duty Cycle | 100% |
| Epsilon | 51.66 |
| Sigma | 1.90 |
| Tissue Depth | 15cm |
| Phantom Type | Universal |
| DUT Workstation Location | Centre |
| Device Positioner | Not Needed |
| Test Date | September 2009 |
| Test Engineer | Maryna. N |

| Mode | Separation Distance (mm) | Channel | Frequency MHz | 1g SAR W/kg |
|----------------|--------------------------|----------|---------------|--------------|
| 802.11g | 0 | 1 | 2412 | 0.039 |
| 802.11g | 0 | 6 | 2437 | 0.054 |
| 802.11g | 0 | 11 | 2462 | 0.041 |

Spot Check on second system with same antenna

| Mode | Separation Distance (mm) | Channel | Frequency MHz | 1g SAR W/kg |
|---------|--------------------------|---------|---------------|-------------|
| 802.11b | 0 | 6 | 2437 | 0.044 |

| SAR Limit | Conservative Measured SAR |
|---------------------------------|---------------------------|
| 1.6 W/kg 1 gram Average Maximum | 0.054 W/kg 1gram Average |

SAR Plot for Conservative SAR Included in Appendix A.



Intel® WiFi-Link 533 Series Network Connection with WNC Antennas **2450n MODE**

| | |
|---------------------------------|-----------------|
| Power | 18.25dBm |
| DUT Position | Underside |
| Separation | 0mm |
| Antenna Type | IFA |
| Antenna Manufacturer | WNC |
| Antenna Location | Right Hand Side |
| Power Mode | Battery |
| Tx Frequency | 2412-2462MHz |
| Duty Cycle | 100% |
| Epsilon | 51.66 |
| Sigma | 1.90 |
| Tissue Depth | 15cm |
| Phantom Type | Universal |
| DUT Workstation Location | Centre |
| Device Positioner | Not Needed |
| Test Date | September 2009 |
| Test Engineer | Maryna. N |

| Mode | Separation Distance (mm) | Channel | Frequency MHz | 1g SAR W/kg |
|---------------|--------------------------|---------|---------------|-------------|
| 802.11n | 0 | 1 | 2412 | 0.034 |
| 802.11n | 0 | 6 | 2437 | 0.038 |
| 802.11n | 0 | 11 | 2462 | 0.071 |
| 802.11n 40MHz | 0 | 1 | 2412 | 0.037 |

Spot Check on second system with same antenna

| Mode | Separation Distance (mm) | Channel | Frequency MHz | 1g SAR W/kg |
|---------|--------------------------|---------|---------------|-------------|
| 802.11n | 0 | 11 | 2462 | 0.059 |

| SAR Limit | Conservative Measured SAR |
|--------------------------------------|---------------------------|
| 1.6 W/kg 1gram Average Maximum 20MHz | 0.071 W/kg 1gram Average |
| 1.6 W/kg 1gram Average Maximum 40MHz | 0.037 W/kg 1gram Average |

SAR Plot for Conservative SAR Included in Appendix A.



Intel® WiFi-Link 533 Series Network Connection with WNC Antennas **802.11a Low Band MODE**

| | |
|---------------------------------|-----------------|
| Power | 16.62dBm |
| DUT Position | Underside |
| Separation | 0mm |
| Antenna Type | IFA |
| Antenna Manufacturer | WNC |
| Antenna Location | Right Hand Side |
| Power Mode | Battery |
| Tx Frequency | 5180-5320MHz |
| Duty Cycle | 100% |
| Epsilon | 48.96 |
| Sigma | 5.23 |
| Tissue Depth | 15cm |
| Phantom Type | Universal |
| DUT Workstation Location | Centre |
| Device Positioner | Not Needed |
| Test Date | September 2009 |
| Test Engineer | Maryna. N |

| Mode | Separation Distance (mm) | Channel | Frequency MHz | 1g SAR W/kg |
|----------------|--------------------------|-----------|---------------|--------------|
| 802.11a | 0 | 36 | 5180 | 0.539 |
| 802.11a | 0 | 52 | 5260 | 0.520 |
| 802.11a | 0 | 64 | 5320 | 0.496 |

Spot Check on second system with same antenna

| Mode | Separation Distance (mm) | Channel | Frequency MHz | 1g SAR W/kg |
|---------|--------------------------|---------|---------------|-------------|
| 802.11a | 0 | 36 | 5180 | 0.514 |

| SAR Limit | Conservative Measured SAR |
|--------------------------------|---------------------------|
| 1.6 W/kg 1gram Average Maximum | 0.539 W/kg 1gram Average |

SAR Plot for Conservative SAR Included in Appendix A.



Intel® WiFi-Link 533 Series Network Connection with WNC Antennas **802.11n Low Band MODE**

| | |
|---------------------------------|-----------------|
| Power | 18.5dBm |
| DUT Position | Underside |
| Separation | 0mm |
| Antenna Type | IFA |
| Antenna Manufacturer | WNC |
| Antenna Location | Right Hand Side |
| Power Mode | Battery |
| Tx Frequency | 5180-5320MHz |
| Duty Cycle | 100% |
| Epsilon | 48.96 |
| Sigma | 5.23 |
| Tissue Depth | 15cm |
| Phantom Type | Universal |
| DUT Workstation Location | Centre |
| Device Positioner | Not Needed |
| Test Date | September 2009 |
| Test Engineer | Maryna. N |

| Mode | Separation Distance (mm) | Channel | Frequency MHz | 1g SAR W/kg |
|----------------------|--------------------------|-----------|---------------|--------------|
| 802.11n 20MHz | 0 | 36 | 5180 | 0.624 |
| 802.11n 40MHz | 0 | 38 | 5190 | 0.750 |

Spot Check on second system with same antenna

| Mode | Separation Distance (mm) | Channel | Frequency MHz | 1g SAR W/kg |
|---------------|--------------------------|---------|---------------|-------------|
| 802.11n 40MHz | 0 | 38 | 5190 | 0.658 |

| SAR Limit | Conservative Measured SAR |
|--------------------------------|---------------------------|
| 1.6 W/kg 1gram Average Maximum | 0.750 W/kg 1gram Average |

SAR Plot for Conservative SAR Included in Appendix A.



Intel® WiFi-Link 533 Series Network Connection with WNC Antennas **802.11a Mid Band MODE**

| | |
|---------------------------------|-----------------|
| Power | 16.62dBm |
| DUT Position | Underside |
| Separation | 0mm |
| Antenna Type | IFA |
| Antenna Manufacturer | WNC |
| Antenna Location | Right Hand Side |
| Power Mode | Battery |
| Tx Frequency | 5500-5700MHz |
| Duty Cycle | 100% |
| Epsilon | 47.89 |
| Sigma | 5.81 |
| Tissue Depth | 15cm |
| Phantom Type | Universal |
| DUT Workstation Location | Centre |
| Device Positioner | Not Needed |
| Test Date | September 2009 |
| Test Engineer | Maryna. N |

| Mode | Separation Distance (mm) | Channel | Frequency MHz | 1g SAR W/kg |
|----------------|--------------------------|------------|---------------|--------------|
| 802.11a | 0 | 100 | 5500 | 0.622 |
| 802.11a | 0 | 120 | 5600 | 0.544 |
| 802.11a | 0 | 140 | 5700 | 0.537 |

Spot Check on second system with same antenna

| Mode | Separation Distance (mm) | Channel | Frequency MHz | 1g SAR W/kg |
|---------|--------------------------|---------|---------------|-------------|
| 802.11a | 0 | 100 | 5500 | 0.585 |

| | |
|--------------------------------|----------------------------------|
| SAR Limit | Conservative Measured SAR |
| 1.6 W/kg 1gram Average Maximum | 0.622 W/kg 1gram Average |

SAR Plot for Conservative SAR Included in Appendix A.



Intel® WiFi-Link 533 Series Network Connection with WNC Antennas **802.11n Mid Band MODE**

| | |
|---------------------------------|-----------------|
| Power | 18.5dBm |
| DUT Position | Underside |
| Separation | 0mm |
| Antenna Type | IFA |
| Antenna Manufacturer | WNC |
| Antenna Location | Right Hand Side |
| Power Mode | Battery |
| Tx Frequency | 5500-5700MHz |
| Duty Cycle | 100% |
| Epsilon | 47.89 |
| Sigma | 5.81 |
| Tissue Depth | 15cm |
| Phantom Type | Universal |
| DUT Workstation Location | Centre |
| Device Positioner | Not Needed |
| Test Date | September 2009 |
| Test Engineer | Maryna. N |

| Mode | Separation Distance (mm) | Channel | Frequency MHz | 1g SAR W/kg |
|----------------------|--------------------------|------------|---------------|--------------|
| 802.11n 20MHz | 0 | 100 | 5500 | 0.600 |
| 802.11n 40MHz | 0 | 102 | 5510 | 0.669 |

Spot Check on second system with same antenna

| Mode | Separation Distance (mm) | Channel | Frequency MHz | 1g SAR W/kg |
|---------------|--------------------------|---------|---------------|-------------|
| 802.11n 40MHz | 0 | 102 | 5510 | 0.528 |

| SAR Limit | Conservative Measured SAR |
|--------------------------------|---------------------------|
| 1.6 W/kg 1gram Average Maximum | 0.669 W/kg 1gram Average |

SAR Plot for Conservative SAR Included in Appendix A.



Intel® WiFi-Link 533 Series Network Connection with WNC Antennas **802.11a High Band MODE**

| | |
|---------------------------------|-----------------|
| Power | 16.62dBm |
| DUT Position | Underside |
| Separation | 0mm |
| Antenna Type | IFA |
| Antenna Manufacturer | WNC |
| Antenna Location | Right Hand Side |
| Power Mode | Battery |
| Tx Frequency | 5745-5825MHz |
| Duty Cycle | 100% |
| Epsilon | 47.43 |
| Sigma | 6.18 |
| Tissue Depth | 15cm |
| Phantom Type | Universal |
| DUT Workstation Location | Centre |
| Device Positioner | Not Needed |
| Test Date | September 2009 |
| Test Engineer | Maryna. N |

| Mode | Separation Distance (mm) | Channel | Frequency MHz | 1g SAR W/kg |
|----------------|--------------------------|------------|---------------|--------------|
| 802.11a | 0 | 149 | 5745 | 0.622 |
| 802.11a | 0 | 157 | 5785 | 0.544 |
| 802.11a | 0 | 165 | 5825 | 0.537 |

Spot Check on second system with same antenna

| Mode | Separation Distance (mm) | Channel | Frequency MHz | 1g SAR W/kg |
|---------|--------------------------|---------|---------------|-------------|
| 802.11a | 0 | 149 | 5745 | 0.431 |

| SAR Limit | Conservative Measured SAR |
|--------------------------------|---------------------------|
| 1.6 W/kg 1gram Average Maximum | 0.622 W/kg 1gram Average |

SAR Plot for Conservative SAR Included in Appendix A.



Intel® WiFi-Link 533 Series Network Connection with WNC Antennas **802.11n Mid Band MODE**

| | |
|---------------------------------|-----------------|
| Power | 18.5dBm |
| DUT Position | 0mm |
| Separation | IFA |
| Antenna Type | WNC |
| Antenna Manufacturer | Right Hand Side |
| Antenna Location | Battery |
| Power Mode | 5745-5825MHz |
| Tx Frequency | 100% |
| Duty Cycle | 47.43 |
| Epsilon | 6.18 |
| Sigma | 15cm |
| Tissue Depth | Universal |
| Phantom Type | Centre |
| DUT Workstation Location | Not Needed |
| Device Positioner | September 2009 |
| Test Date | 0mm |
| Test Engineer | Maryna. N |

| Mode | Separation Distance (mm) | Channel | Frequency MHz | 1g SAR W/kg |
|----------------------|--------------------------|------------|---------------|--------------|
| 802.11n 20MHz | 0 | 149 | 5745 | 0.572 |
| 802.11n 40MHz | 0 | 151 | 5755 | 0.665 |

Spot Check on second system with same antenna

| Mode | Separation Distance (mm) | Channel | Frequency MHz | 1g SAR W/kg |
|---------------|--------------------------|---------|---------------|-------------|
| 802.11n 40MHz | 0 | 151 | 5755 | 0.647 |

| SAR Limit | Conservative Measured SAR |
|--------------------------------|---------------------------|
| 1.6 W/kg 1gram Average Maximum | 0.665 W/kg 1gram Average |

SAR Plot for Conservative SAR Included in Appendix A.





SAR & HAC Instruments for Wireless • Consulting • Research • Standards • Compliance • Training

6.6 Additional Information

The Intel® WiFi-Link 533 Series Network Connection card located inside a LENOVO laptop computer was tested at other locations to ensure a conservative SAR was assessed.

See Setup pictures





SAR & HAC Instruments for Wireless • Consulting • Research • Standards • Compliance • Training

Appendix A SAR Plots



SAR Test Report

Report Date : 16-Sep-2009
 By Operator : 123
 Measurement Date : 16-Sep-2009
 Starting Time : 16-Sep-2009 02:49:01 PM
 End Time : 16-Sep-2009 03:00:23 PM
 Scanning Time : 682 secs

Product Data
 Device Name : Lenovo-WNC-5472
 Serial No. : NNIWBA0171
 Type : Other
 Model : WNC-533
 Frequency : 2450.00 MHz
 Max. Transmit Pwr : 1 W
 Drift Time : 0 min(s)
 Length : 135 mm
 Width : 100 mm
 Depth : 20 mm
 Antenna Type : Internal
 Orientation : Touch
 Power Drift-Start : 0.010 W/kg
 Power Drift-Finish: 0.011 W/kg
 Power Drift (%) : 6.708
 Picture : C:\alsas\bitmap\lenovo_wnc_a.bmp

Phantom Data
 Name : APREL-Uni
 Type : Uni-Phantom
 Size (mm) : 280 x 280 x 200
 Serial No. : User Define
 Location : Center
 Description : U

Tissue Data
 Type : BODY
 Serial No. : 2450_B
 Frequency : 2450.00 MHz
 Last Calib. Date : 12-Sep-2009
 Temperature : 20.00 °C
 Ambient Temp. : 20.00 °C
 Humidity : 40.00 RH%
 Epsilon : 51.66 F/m
 Sigma : 1.90 S/m
 Density : 1000.00 kg/cu. m

Probe Data

Name : .E20
 Model : E20
 Type : E-Field Triangle
 Serial No. : 222
 Last Calib. Date : 16-Jan-2009
 Frequency : 2450.00 MHz
 Duty Cycle Factor: 1
 Conversion Factor: 4.75
 Probe Sensitivity: 1.20 1.20 1.20 $\mu\text{V}/(\text{V}/\text{m})^2$
 Compression Point: 95.00 mV
 Offset : 1.56 mm

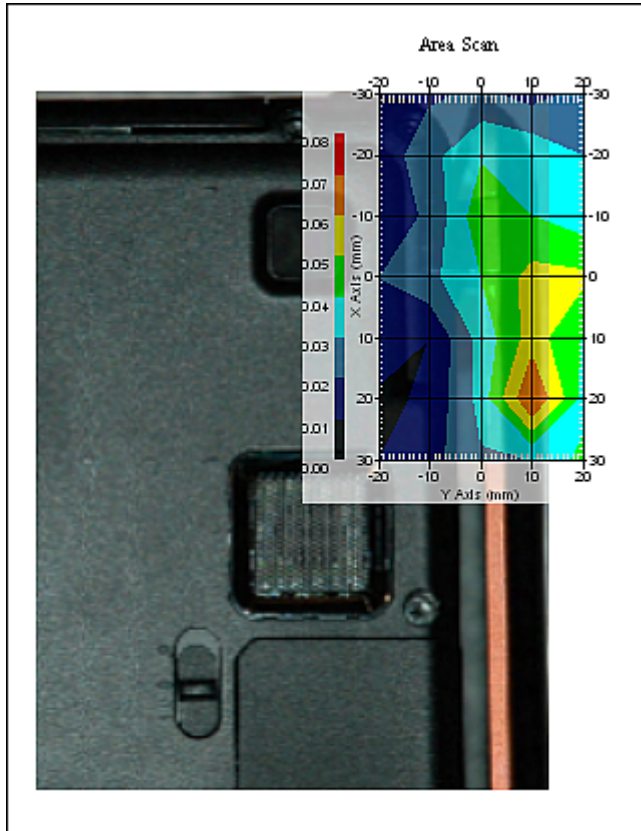
Measurement Data

Crest Factor : 1
 Scan Type : Complete
 Tissue Temp. : 21.00 °C
 Ambient Temp. : 22.00 °C
 Set-up Date : 16-Sep-2009
 Set-up Time : 2:48:34 PM
 Area Scan : 7x5x1 : Measurement x=10mm, y=10mm, z=4mm
 Zoom Scan : 5x5x8 : Measurement x=8mm, y=8mm, z=4mm

Other Data

DUT Position : Touch
 Separation : 0
 Channel : Mid





1 gram SAR value : 0.080 W/kg
 Zoom Scan Peak SAR : 0.260 W/kg





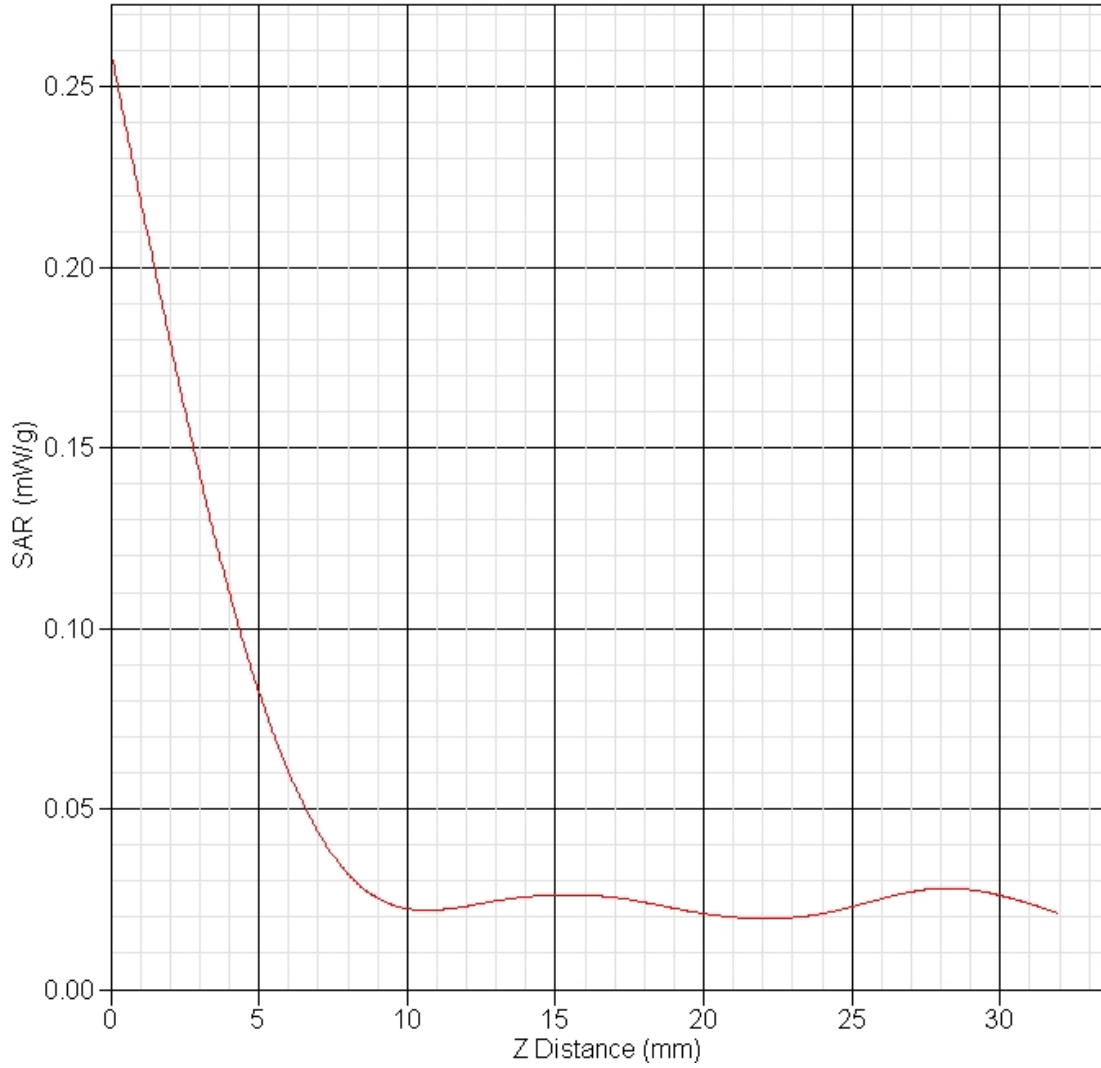
SAR & HAC Instruments for Wireless • Consulting • Research • Standards • Compliance • Training

Exposure Assessment Measurement Uncertainty

| Source of Uncertainty | Tolerance Value | Probability Distribution | Divisor | c_i^{-1} (1-g) | c_i^{-1} (10-g) | Standard Uncertainty (1-g) % | Standard Uncertainty (10-g) % |
|---|-----------------|--------------------------|---------|------------------|-------------------|------------------------------|-------------------------------|
| Measurement System | | | | | | | |
| Probe Calibration | 3.5 | normal | 1 | 1 | 1 | 3.5 | 3.5 |
| Axial Isotropy | 3.7 | rectangular | •3 | $(1-cp)^{1/2}$ | $(1-cp)^{1/2}$ | 1.5 | 1.5 |
| Hemispherical Isotropy | 10.9 | rectangular | •3 | •cp | •cp | 4.4 | 4.4 |
| Boundary Effect | 1.0 | rectangular | •3 | 1 | 1 | 0.6 | 0.6 |
| Linearity | 4.7 | rectangular | •3 | 1 | 1 | 2.7 | 2.7 |
| Detection Limit | 1.0 | rectangular | •3 | 1 | 1 | 0.6 | 0.6 |
| Readout Electronics | 1.0 | normal | 1 | 1 | 1 | 1.0 | 1.0 |
| Response Time | 0.8 | rectangular | •3 | 1 | 1 | 0.5 | 0.5 |
| Integration Time | 1.7 | rectangular | •3 | 1 | 1 | 1.0 | 1.0 |
| RF Ambient Condition | 3.0 | rectangular | •3 | 1 | 1 | 1.7 | 1.7 |
| Probe Positioner Mech. | 0.4 | rectangular | •3 | 1 | 1 | 0.2 | 0.2 |
| Restriction | | | | | | | |
| Probe Positioning with respect to Phantom Shell | 2.9 | rectangular | •3 | 1 | 1 | 1.7 | 1.7 |
| Extrapolation and Integration | 3.7 | rectangular | •3 | 1 | 1 | 2.1 | 2.1 |
| Test Sample Positioning | 4.0 | normal | 1 | 1 | 1 | 4.0 | 4.0 |
| Device Holder Uncertainty | 2.0 | normal | 1 | 1 | 1 | 2.0 | 2.0 |
| Drift of Output Power | 6.7 | rectangular | •3 | 1 | 1 | 3.9 | 3.9 |
| Phantom and Setup | | | | | | | |
| Phantom Uncertainty (shape & thickness tolerance) | 3.4 | rectangular | •3 | 1 | 1 | 2.0 | 2.0 |
| Liquid Conductivity (target) | 5.0 | rectangular | •3 | 0.7 | 0.5 | 2.0 | 1.4 |
| Liquid Conductivity (meas.) | 2.6 | normal | 1 | 0.7 | 0.5 | 1.8 | 1.3 |
| Liquid Permittivity (target) | 5.0 | rectangular | •3 | 0.6 | 0.5 | 1.7 | 1.4 |
| Liquid Permittivity (meas.) | 2.0 | normal | 1 | 0.6 | 0.5 | 1.2 | 1.0 |
| Combined Uncertainty | | RSS | | | | 10.3 | 10.0 |
| Combined Uncertainty (coverage factor=2) | | Normal (k=2) | | | | 20.5 | 20.0 |



SAR-Z Axis at Hotspot x:12.15 y:17.90



SAR Test Report

Report Date : 25-Sep-2009
 By Operator : 123
 Measurement Date : 25-Sep-2009
 Starting Time : 25-Sep-2009 02:25:37 PM
 End Time : 25-Sep-2009 03:41:58 PM
 Scanning Time : xxxx secs

Product Data
 Device Name : Lenovo-WNC-5472
 Serial No. : NNIWBA0171
 Type : Other
 Model : WNC-533
 Frequency : 5200.00 MHz
 Max. Transmit Pwr : 1 W
 Drift Time : 0 min(s)
 Length : 135 mm
 Width : 100 mm
 Depth : 20 mm
 Antenna Type : Internal
 Orientation : Touch
 Power Drift-Start : 0.057 W/kg
 Power Drift-Finish : 0.060 W/kg
 Power Drift (%) : 4.1815
 Picture : C:\alsas\bitmap\lenovo_wnc_a.bmp

Phantom Data
 Name : APREL-Uni
 Type : Uni-Phantom
 Size (mm) : 280 x 280 x 200
 Serial No. : User Define
 Location : Center
 Description : U

Tissue Data
 Type : BODY
 Serial No. : 5200-B
 Frequency : 5200.00 MHz
 Last Calib. Date : 23-Sep-2009
 Temperature : 20.00 °C
 Ambient Temp. : 20.00 °C
 Humidity : 40.00 RH%
 Epsilon : 48.96 F/m
 Sigma : 5.23 S/m
 Density : 1000.00 kg/cu. m

Probe Data

Name : .E30
 Model : E30
 Type : E-Field Triangle
 Serial No. : 222
 Last Calib. Date : 16-Jan-2009
 Frequency : 5200.00 MHz
 Duty Cycle Factor: 1
 Conversion Factor: 3.3
 Probe Sensitivity: 1.20 1.20 1.20 $\mu\text{V}/(\text{V}/\text{m})^2$
 Compression Point: 95.00 mV
 Offset : 0.56 mm

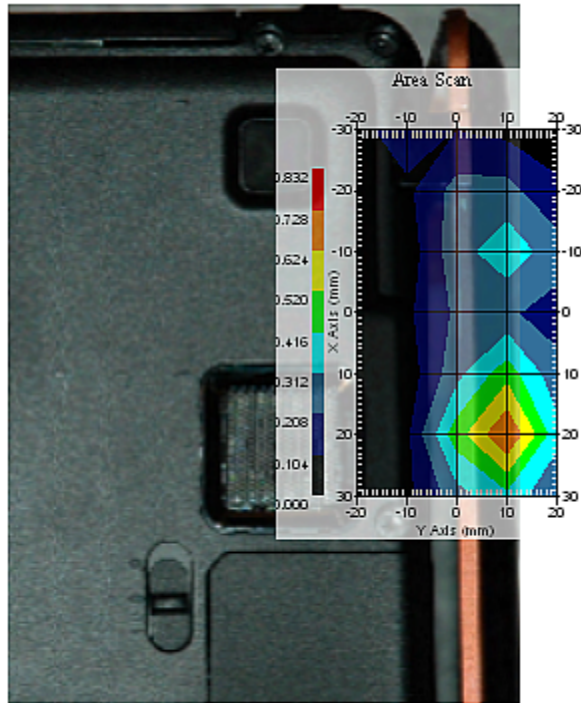
Measurement Data

Crest Factor : 1
 Scan Type : Complete
 Tissue Temp. : 21.00 °C
 Ambient Temp. : 22.00 °C
 Set-up Date : 25-Sep-2009
 Set-up Time : 2:25:11 PM
 Area Scan : 7x5x1 : Measurement x=10mm, y=10mm, z=2mm
 Zoom Scan : 9x9x17 : Measurement x=4mm, y=4mm, z=2mm

Other Data

DUT Position : Touch
 Separation : 0
 Channel : Low





1 gram SAR value : 0.750 W/kg
 Zoom Scan Peak SAR : 1.611 W/kg





SAR & HAC Instruments for Wireless • Consulting • Research • Standards • Compliance • Training

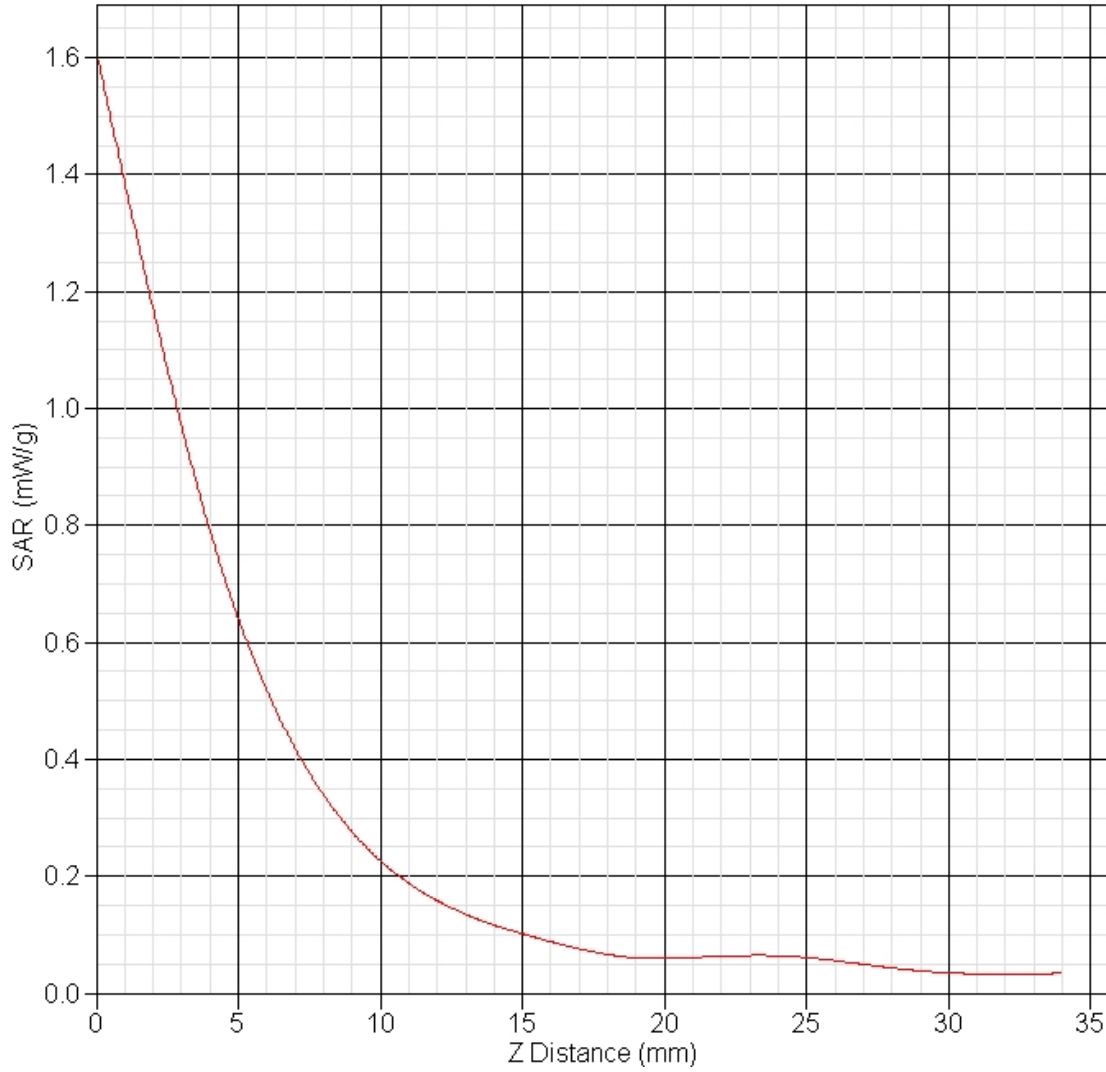
Exposure Assessment Measurement Uncertainty

| Source of Uncertainty | Tolerance Value | Probability Distribution | Divisor | c_i^{-1} (1-g) | c_i^{-1} (10-g) | Standard Uncertainty (1-g) % | Standard Uncertainty (10-g) % |
|---|-----------------|--------------------------|---------|------------------|-------------------|------------------------------|-------------------------------|
| Measurement System | | | | | | | |
| Probe Calibration | 3.5 | normal | 1 | 1 | 1 | 3.5 | 3.5 |
| Axial Isotropy | 3.7 | rectangular | •3 | $(1-cp)^{1/2}$ | $(1-cp)^{1/2}$ | 1.5 | 1.5 |
| Hemispherical Isotropy | 10.9 | rectangular | •3 | •cp | •cp | 4.4 | 4.4 |
| Boundary Effect | 1.0 | rectangular | •3 | 1 | 1 | 0.6 | 0.6 |
| Linearity | 4.7 | rectangular | •3 | 1 | 1 | 2.7 | 2.7 |
| Detection Limit | 1.0 | rectangular | •3 | 1 | 1 | 0.6 | 0.6 |
| Readout Electronics | 1.0 | normal | 1 | 1 | 1 | 1.0 | 1.0 |
| Response Time | 0.8 | rectangular | •3 | 1 | 1 | 0.5 | 0.5 |
| Integration Time | 1.7 | rectangular | •3 | 1 | 1 | 1.0 | 1.0 |
| RF Ambient Condition | 3.0 | rectangular | •3 | 1 | 1 | 1.7 | 1.7 |
| Probe Positioner Mech. | 0.4 | rectangular | •3 | 1 | 1 | 0.2 | 0.2 |
| Restriction | | | | | | | |
| Probe Positioning with respect to Phantom Shell | 2.9 | rectangular | •3 | 1 | 1 | 1.7 | 1.7 |
| Extrapolation and Integration | 3.7 | rectangular | •3 | 1 | 1 | 2.1 | 2.1 |
| Test Sample Positioning | 4.0 | normal | 1 | 1 | 1 | 4.0 | 4.0 |
| Device Holder Uncertainty | 2.0 | normal | 1 | 1 | 1 | 2.0 | 2.0 |
| Drift of Output Power | 4.2 | rectangular | •3 | 1 | 1 | 2 | 2 |
| Phantom and Setup | | | | | | | |
| Phantom Uncertainty (shape & thickness tolerance) | 3.4 | rectangular | •3 | 1 | 1 | 2 | 2 |
| Liquid Conductivity (target) | 5.0 | rectangular | •3 | 0.7 | 0.5 | 2 | 1.4 |
| Liquid Conductivity (meas.) | 2.2 | normal | 1 | 0.7 | 0.5 | 1.6 | 1.1 |
| Liquid Permittivity (target) | 5.0 | rectangular | •3 | 0.6 | 0.5 | 1.7 | 1.4 |
| Liquid Permittivity (meas.) | 0.1 | normal | 1 | 0.6 | 0.5 | 0.1 | 0.1 |
| Combined Uncertainty | | RSS | | | | 9.4 | 8 |
| Combined Uncertainty (coverage factor=2) | | Normal (k=2) | | | | 18.8 | 16 |



SAR-Z Axis

at Hotspot x:20.13 y:4.90



SAR Test Report

Report Date : 25-Sep-2009
 By Operator : 123
 Measurement Date : 25-Sep-2009
 Starting Time : 25-Sep-2009 07:44:31 PM
 End Time : 25-Sep-2009 09:00:52 PM
 Scanning Time : xxxx secs

Product Data
 Device Name : Lenovo-WNC-5472
 Serial No. : NNIWBA0171
 Type : Other
 Model : WNC-533
 Frequency : 5600.00 MHz
 Max. Transmit Pwr : 1 W
 Drift Time : 0 min(s)
 Length : 135 mm
 Width : 100 mm
 Depth : 20 mm
 Antenna Type : Internal
 Orientation : Touch
 Power Drift-Start : 0.066 W/kg
 Power Drift-Finish : 0.064 W/kg
 Power Drift (%) : -2.847
 Picture : C:\alsas\bitmap\lenovo_wnc_a.bmp

Phantom Data
 Name : APREL-Uni
 Type : Uni-Phantom
 Size (mm) : 280 x 280 x 200
 Serial No. : User Define
 Location : Center
 Description : U

Tissue Data
 Type : BODY
 Serial No. : 5600BB
 Frequency : 5600.00 MHz
 Last Calib. Date : 23-Sep-2009
 Temperature : 20.00 °C
 Ambient Temp. : 20.00 °C
 Humidity : 22.00 RH%
 Epsilon : 47.89 F/m
 Sigma : 5.81 S/m
 Density : 1000.00 kg/cu. m

Probe Data

Name : .E30
 Model : E30
 Type : E-Field Triangle
 Serial No. : 222
 Last Calib. Date : 16-Jan-2009
 Frequency : 5600.00 MHz
 Duty Cycle Factor: 1
 Conversion Factor: 3.0
 Probe Sensitivity: 1.20 1.20 1.20 $\mu\text{V}/(\text{V}/\text{m})^2$
 Compression Point: 95.00 mV
 Offset : 0.56 mm

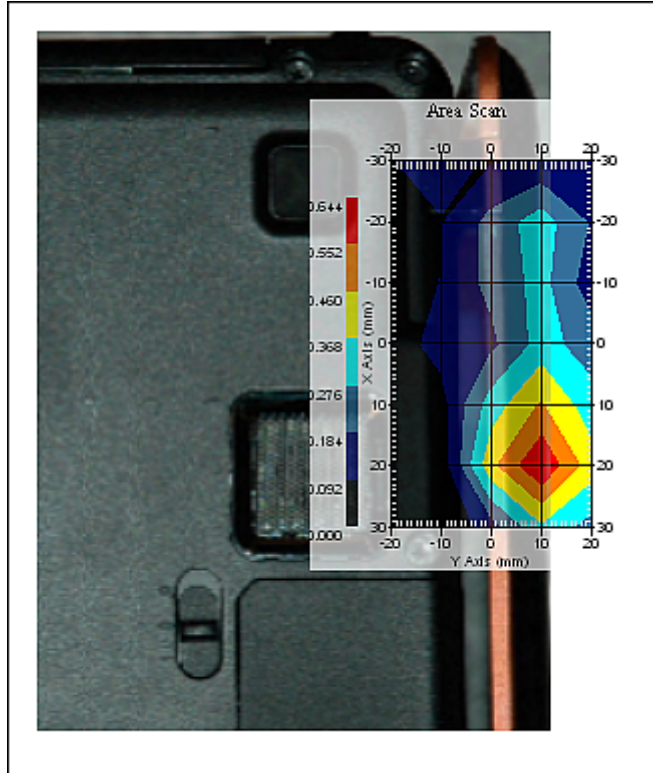
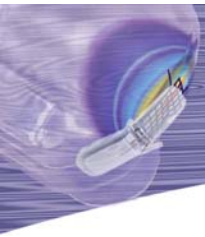
Measurement Data

Crest Factor : 1
 Scan Type : Complete
 Tissue Temp. : 21.00 °C
 Ambient Temp. : 22.00 °C
 Set-up Date : 25-Sep-2009
 Set-up Time : 7:44:09 PM
 Area Scan : 7x5x1 : Measurement x=10mm, y=10mm, z=2mm
 Zoom Scan : 9x9x17 : Measurement x=4mm, y=4mm, z=2mm

Other Data

DUT Position : Touch
 Separation : 0
 Channel : Mid





1 gram SAR value : 0.669 W/kg
 Zoom Scan Peak SAR : 1.861 W/kg





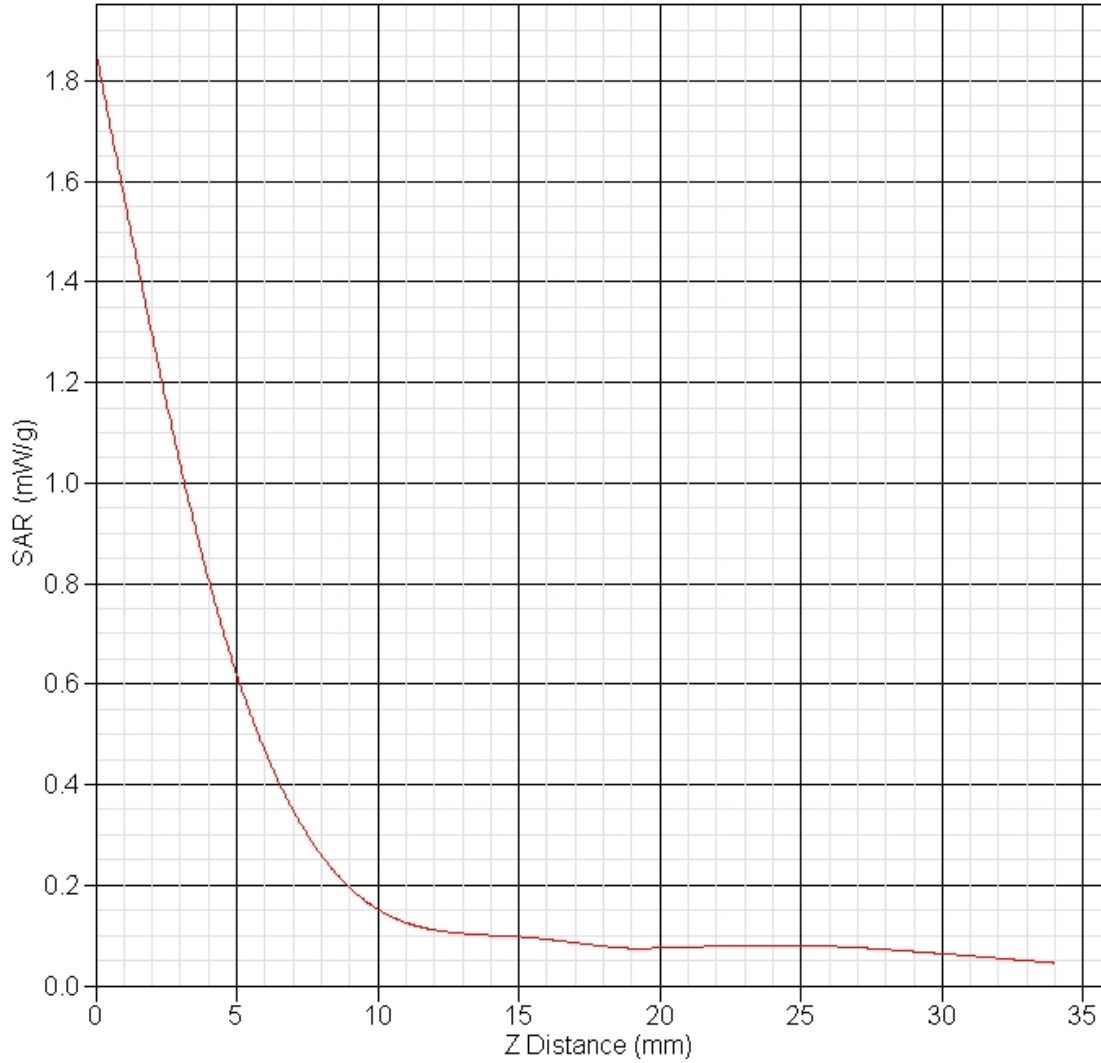
SAR & HAC Instruments for Wireless • Consulting • Research • Standards • Compliance • Training

Exposure Assessment Measurement Uncertainty

| Source of Uncertainty | Tolerance Value | Probability Distribution | Divisor | c_i^{-1} (1-g) | c_i^{-1} (10-g) | Standard Uncertainty (1-g) % | Standard Uncertainty (10-g) % |
|---|-----------------|--------------------------|---------|------------------|-------------------|------------------------------|-------------------------------|
| Measurement System | | | | | | | |
| Probe Calibration | 3.5 | normal | 1 | 1 | 1 | 3.5 | 3.5 |
| Axial Isotropy | 3.7 | rectangular | •3 | $(1-cp)^{1/2}$ | $(1-cp)^{1/2}$ | 1.5 | 1.5 |
| Hemispherical Isotropy | 10.9 | rectangular | •3 | •cp | •cp | 4.4 | 4.4 |
| Boundary Effect | 1.0 | rectangular | •3 | 1 | 1 | 0.6 | 0.6 |
| Linearity | 4.7 | rectangular | •3 | 1 | 1 | 2.7 | 2.7 |
| Detection Limit | 1.0 | rectangular | •3 | 1 | 1 | 0.6 | 0.6 |
| Readout Electronics | 1.0 | normal | 1 | 1 | 1 | 1.0 | 1.0 |
| Response Time | 0.8 | rectangular | •3 | 1 | 1 | 0.5 | 0.5 |
| Integration Time | 1.7 | rectangular | •3 | 1 | 1 | 1.0 | 1.0 |
| RF Ambient Condition | 3.0 | rectangular | •3 | 1 | 1 | 1.7 | 1.7 |
| Probe Positioner Mech. | 0.4 | rectangular | •3 | 1 | 1 | 0.2 | 0.2 |
| Restriction | | | | | | | |
| Probe Positioning with respect to Phantom Shell | 2.9 | rectangular | •3 | 1 | 1 | 1.7 | 1.7 |
| Extrapolation and Integration | 3.7 | rectangular | •3 | 1 | 1 | 2.1 | 2.1 |
| Test Sample Positioning | 4.0 | normal | 1 | 1 | 1 | 4.0 | 4.0 |
| Device Holder Uncertainty | 2.0 | normal | 1 | 1 | 1 | 2.0 | 2.0 |
| Drift of Output Power | 2.8 | rectangular | •3 | 1 | 1 | 1.7 | 1.7 |
| Phantom and Setup | | | | | | | |
| Phantom Uncertainty (shape & thickness tolerance) | 3.4 | rectangular | •3 | 1 | 1 | 2 | 2 |
| Liquid Conductivity (target) | 5.0 | rectangular | •3 | 0.7 | 0.5 | 2 | 1.4 |
| Liquid Conductivity (meas.) | 1.4 | normal | 1 | 0.7 | 0.5 | 2 | 1.4 |
| Liquid Permittivity (target) | 5.0 | rectangular | •3 | 0.6 | 0.5 | 1.7 | 1.4 |
| Liquid Permittivity (meas.) | 1.4 | normal | 1 | 0.6 | 0.5 | 2 | 1.4 |
| Combined Uncertainty | | RSS | | | | 11.4 | 9.3 |
| Combined Uncertainty (coverage factor=2) | | Normal (k=2) | | | | 22.8 | 18.6 |



SAR-Z Axis at Hotspot x:20.15 y:9.88



SAR Test Report

Report Date : 27-Sep-2009
 By Operator : 123
 Measurement Date : 27-Sep-2009
 Starting Time : 27-Sep-2009 02:24:35 PM
 End Time : 27-Sep-2009 03:41:00 PM
 Scanning Time : xxxx secs

Product Data
 Device Name : Lenovo-WNC-5472
 Serial No. : NNIWBA0171
 Type : Other
 Model : WNC-533
 Frequency : 5800.00 MHz
 Max. Transmit Pwr : 1 W
 Drift Time : 0 min(s)
 Length : 135 mm
 Width : 100 mm
 Depth : 20 mm
 Antenna Type : Internal
 Orientation : Touch
 Power Drift-Start : 0.028 W/kg
 Power Drift-Finish: 0.026 W/kg
 Power Drift (%) : 4.066
 Picture : C:\alsas\bitmap\lenovo_wnc_a.bmp

Phantom Data
 Name : APREL-Uni
 Type : Uni-Phantom
 Size (mm) : 280 x 280 x 200
 Serial No. : User Define
 Location : Center
 Description : U

Tissue Data
 Type : BODY
 Serial No. : 5800-B
 Frequency : 5800.00 MHz
 Last Calib. Date : 23-Sep-2009
 Temperature : 20.00 °C
 Ambient Temp. : 20.00 °C
 Humidity : 50.00 RH%
 Epsilon : 47.43 F/m
 Sigma : 6.18 S/m
 Density : 1000.00 kg/cu. m

Probe Data

Name : .E30
 Model : E30
 Type : E-Field Triangle
 Serial No. : 222
 Last Calib. Date : 16-Jan-2009
 Frequency : 5800.00 MHz
 Duty Cycle Factor: 1
 Conversion Factor: 3.2
 Probe Sensitivity: 1.20 1.20 1.20 $\mu\text{V}/(\text{V}/\text{m})^2$
 Compression Point: 95.00 mV
 Offset : 0.56 mm

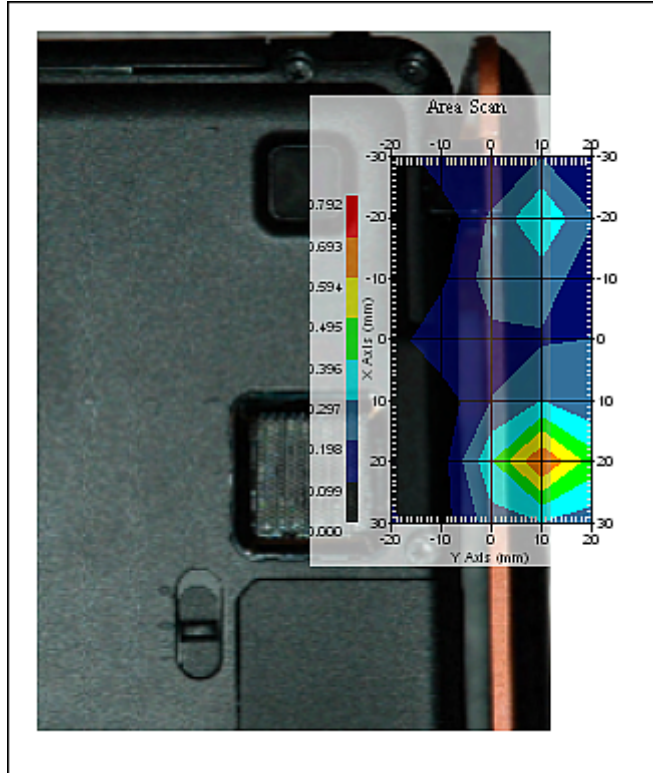
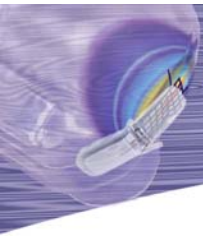
Measurement Data

Crest Factor : 1
 Scan Type : Complete
 Tissue Temp. : 21.00 °C
 Ambient Temp. : 22.00 °C
 Set-up Date : 27-Sep-2009
 Set-up Time : 2:24:18 PM
 Area Scan : 7x5x1 : Measurement x=10mm, y=10mm, z=2mm
 Zoom Scan : 9x9x17 : Measurement x=4mm, y=4mm, z=2mm

Other Data

DUT Position : Touch
 Separation : 0
 Channel : Low





1 gram SAR value : 0.665 W/kg
 Zoom Scan Peak SAR : 1.631 W/kg





SAR & HAC Instruments for Wireless • Consulting • Research • Standards • Compliance • Training

Exposure Assessment Measurement Uncertainty

| Source of Uncertainty | Tolerance Value | Probability Distribution | Divisor | c_i^{-1} (1-g) | c_i^{-1} (10-g) | Standard Uncertainty (1-g) % | Standard Uncertainty (10-g) % |
|---|-----------------|--------------------------|---------|------------------|-------------------|------------------------------|-------------------------------|
| Measurement System | | | | | | | |
| Probe Calibration | 3.5 | normal | 1 | 1 | 1 | 3.5 | 3.5 |
| Axial Isotropy | 3.7 | rectangular | •3 | $(1-cp)^{1/2}$ | $(1-cp)^{1/2}$ | 1.5 | 1.5 |
| Hemispherical Isotropy | 10.9 | rectangular | •3 | •cp | •cp | 4.4 | 4.4 |
| Boundary Effect | 1.0 | rectangular | •3 | 1 | 1 | 0.6 | 0.6 |
| Linearity | 4.7 | rectangular | •3 | 1 | 1 | 2.7 | 2.7 |
| Detection Limit | 1.0 | rectangular | •3 | 1 | 1 | 0.6 | 0.6 |
| Readout Electronics | 1.0 | normal | 1 | 1 | 1 | 1.0 | 1.0 |
| Response Time | 0.8 | rectangular | •3 | 1 | 1 | 0.5 | 0.5 |
| Integration Time | 1.7 | rectangular | •3 | 1 | 1 | 1.0 | 1.0 |
| RF Ambient Condition | 3.0 | rectangular | •3 | 1 | 1 | 1.7 | 1.7 |
| Probe Positioner Mech. | 0.4 | rectangular | •3 | 1 | 1 | 0.2 | 0.2 |
| Restriction | | | | | | | |
| Probe Positioning with respect to Phantom Shell | 2.9 | rectangular | •3 | 1 | 1 | 1.7 | 1.7 |
| Extrapolation and Integration | 3.7 | rectangular | •3 | 1 | 1 | 2.1 | 2.1 |
| Test Sample Positioning | 4.0 | normal | 1 | 1 | 1 | 4.0 | 4.0 |
| Device Holder Uncertainty | 2.0 | normal | 1 | 1 | 1 | 2.0 | 2.0 |
| Drift of Output Power | 4.1 | rectangular | •3 | 1 | 1 | 2 | 2 |
| Phantom and Setup | | | | | | | |
| Phantom Uncertainty (shape & thickness tolerance) | 3.4 | rectangular | •3 | 1 | 1 | 2 | 2 |
| Liquid Conductivity (target) | 5.0 | rectangular | •3 | 0.7 | 0.5 | 2 | 1.4 |
| Liquid Conductivity (meas.) | 3.0 | normal | 1 | 0.7 | 0.5 | 2.1 | 1.5 |
| Liquid Permittivity (target) | 5.0 | rectangular | •3 | 0.6 | 0.5 | 1.7 | 1.4 |
| Liquid Permittivity (meas.) | 1.6 | normal | 1 | 0.6 | 0.5 | 1 | 0.8 |
| Combined Uncertainty | | RSS | | | | 10.8 | 9.1 |
| Combined Uncertainty (coverage factor=2) | | Normal (k=2) | | | | 21.6 | 18.2 |



SAR-Z Axis at Hotspot x:20.20 y:9.87

