

Antenna Information

Section 1. Antenna Assembly Specifications

Antenna Assembly Summary:

1A Antenna Part Number	1B Manufacture	1C Antenna Type	1D Cable Assembly Part Number and Information	1E Peak Gain W/ Cable loss (dBi)	1F Peak Gain w/o Cable Loss (dBi)	1G VSWR	1H Cable Loss (dBi)
Main Antenna (WNC P/N:81.EBC15.102) (customer P/N:DC33000DE00)	Wistron Neweb Corporation	PIFA	P/N: 1371620B(231) 50 ohm Coaxial. length: 620 mm diameter: 1.37 mm Connector: IPEX	2400-2500MHz	2400-2500MHz	2400-2500MHz	2400-2500MHz
				2.93 dBi (peak)	4.46 dBi (peak)	2.0 max	1.53 dBi (peak)
				5150-5350MHz	5150-5350MHz	5150-5350MHz	5150-5350MHz
				4.70 dBi (peak)	7.10 dBi (peak)	2.5 max	2.40 dBi (peak)
				5470-5725MHz	5470-5725MHz	5470-5725MHz	5470-5725MHz
4.69 dBi (peak)	7.24 dBi (peak)	2.5 max	2.54 dBi (peak)				
5725-5825MHz	5725-5825MHz	5725-5825MHz	5725-5825MHz				
2.68 dBi (peak)	5.26 dBi (peak)	2.5 max	2.58 dBi (peak)				
AUX Antenna (WNC P/N:81.EBC15.102) (customer P/N:DC33000DE00)	Wistron Neweb Corporation	PIFA	P/N: 1371920B(231) 50 ohm Coaxial. length: 920 mm diameter: 1.37 mm Connector: IPEX	2400-2500MHz	2400-2500MHz	2400-2500MHz	2400-2500MHz
				2.26 dBi (peak)	4.43 dBi (peak)	2.0 max	2.17 dBi (peak)
				5150-5350MHz	5150-5350MHz	5150-5350MHz	5150-5350MHz
				3.21 dBi (peak)	6.66 dBi (peak)	2.5 max	3.45 dBi (peak)
				5470-5725MHz	5470-5725MHz	5470-5725MHz	5470-5725MHz
1.02 dBi (peak)	4.67 dBi (peak)	2.5 max	3.65 dBi (peak)				
5725-5825MHz	5725-5825MHz	5725-5825MHz	5725-5825MHz				
-0.08 dBi (peak)	3.63 dBi (peak)	2.5 max	3.71 dBi (peak)				
MIMO Antenna (WNC P/N:81.EBC15.102) (customer P/N:DC33000DE00)	Wistron Neweb Corporation	PIFA	P/N: 1371680G(231) 50 ohm Coaxial. length: 680 mm diameter: 1.37 mm Connector: IPEX	2400-2500MHz	2400-2500MHz	2400-2500MHz	2400-2500MHz
				* dBi (peak)	* dBi (peak)	* max	* dBi (peak)
				5150-5350MHz	5150-5350MHz	5150-5350MHz	5150-5350MHz
				* dBi (peak)	* dBi (peak)	* max	* dBi (peak)
				5470-5725MHz	5470-5725MHz	5470-5725MHz	5470-5725MHz
* dBi (peak)	* dBi (peak)	* max	* dBi (peak)				
5725-5825MHz	5725-5825MHz	5725-5825MHz	5725-5825MHz				
* dBi (peak)	* dBi (peak)	* max	* dBi (peak)				

NOTE:

(* If Rx3 only (3rd antenna receives only, e.g. for 4965AGN) then the information marked with * is not required

Antenna Peak Gain Table:

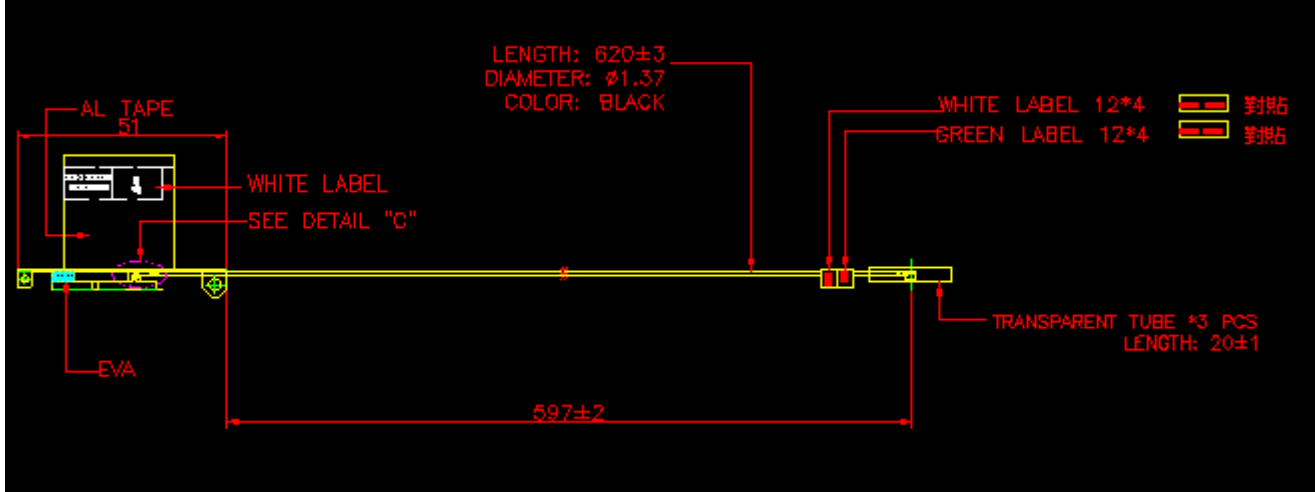
Frequency (MHz)	Main Antenna		Aux Antenna		MIMO Antenna	
	Horizontal	Vertical	Horizontal	Vertical	Horizontal	Vertical
	(dBi)	(dBi)	(dBi)	(dBi)	(dBi)	(dBi)
2400	0.46	-2.51	1.57	-2.50	*	*
2450	2.93	-0.17	2.26	-0.64	*	*
2500	1.23	-2.33	1.28	-3.23	*	*
5150	4.33	-0.22	3.21	0.68	*	*
5250	3.32	-0.28	2.40	0.57	*	*
5350	4.70	1.07	1.54	-0.48	*	*
5470	4.69	-0.47	1.02	-1.13	*	*
5600	3.94	-0.43	-0.66	-2.02	*	*
5725	3.07	-1.36	-1.29	-2.29	*	*
5785	2.68	-1.29	-0.28	-2.08	*	*
5850	1.99	-1.27	-0.08	-2.27	*	*

- Antenna Peak Gain required being test in system basis.
- 1E frame contend absolutely peak antenna gain include H/V
- If Rx3 only (3rd antenna receives only, e.g. for 4965AGN) then the information is not required for Rx3.

Section 2. Dimensioned Photos or Drawings of Antennas

Include a dimensioned photo and dimensioned drawing of Main and AUX antenna here.

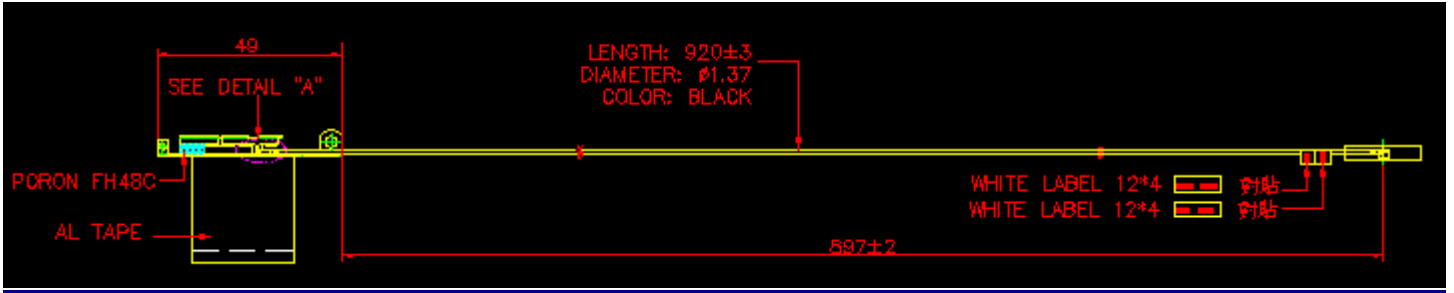
Main Antenna Dimensioned Drawing:



Main Antenna Photo:



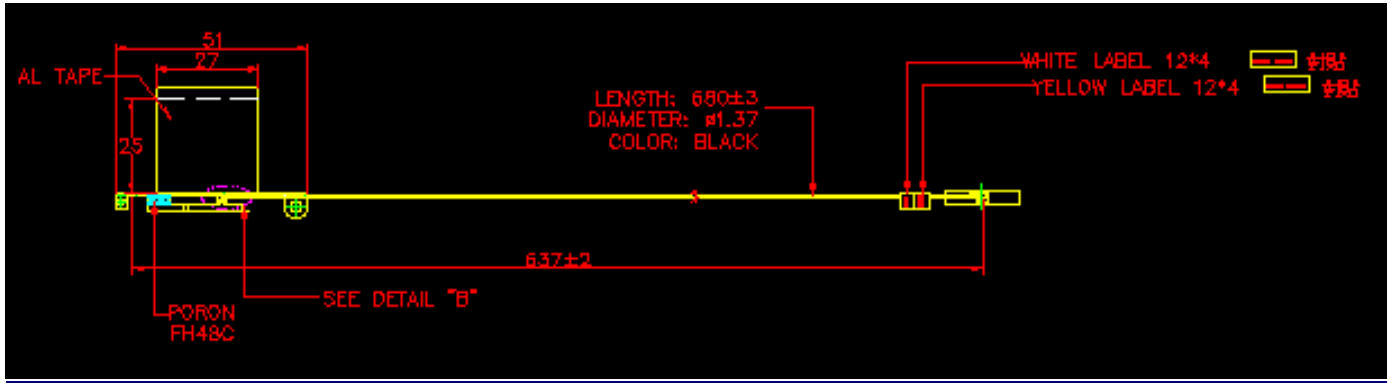
Auxiliary Antenna Dimensioned Drawing:



Auxiliary Antenna Photo:



MIMO Antenna Dimensioned Drawing:



MIMO Antenna Photo:

