

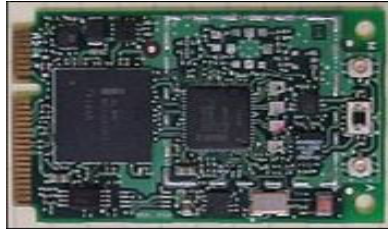
Intel® PRO/Wireless 3945ABG Network Connection



Intel in
Communications

Product Description:

An embedded 802.11a/b/g network adapter operating in the 2.4 GHz and 5 GHz spectrum. This solution is based on the Mini Card form factor designed to meet the space and size requirements for thin and light notebook PCs.



Key Features:

- IEEE 802.11a/b/g standard tri-mode Wi-Fi CERTIFIED* Wireless LAN support (2.4GHz and 5GHz)[†]
- Up to 54 Mbps data rates (Note: 802.11b up to 11Mbps and 802.11a/g up to 54 Mbps data rates)
- Industry standard wireless LAN security support is available (802.1X, WEP, WPA, AES)[‡]
- Cisco* Compatible Extensions (such as LEAP and CKIP) support available on certain models. Check with your PC manufacturer for Cisco security support.[§]
- Support for antenna diversity enables optimized WLAN performance for multi-antenna systems.
- Intel® Wireless Coexistence System capability enables Bluetooth* co-existence
- Support for QoS through 802.11e EDCA with Admission Control
- Flexible Roaming with multiple triggers and sensitivity
- BGX version available without support for 802.11a

Technical Specifications

Model Name	Intel® PRO/Wireless 3945ABG Network Connection
Dimensions (H x W x D)	2.00 in x 1.18 in x 0.18 in (50.95mm x 30mm x 4.5mm)
Weight	0.006 KG
Antenna Interface Connector	Hirose* U.FL-R-SMT mates with cable connector U.FL-LP-066
Dual Diversity Antenna	On-board dual diversity switching support for systems designed with two antennas
Radio ON/OFF control [°]	Supported by both hardware and software
Connector Interface	MiniCard form factor, based on PCI-E electrical interface
LEDs output	Link, Activity
Operating Temperature	0 to +80° Celsius
Humidity Non-Operating	50 to 92% RH non-condensing (at temperatures of 25°C to 80°C)

Intel® PRO
Network Connections

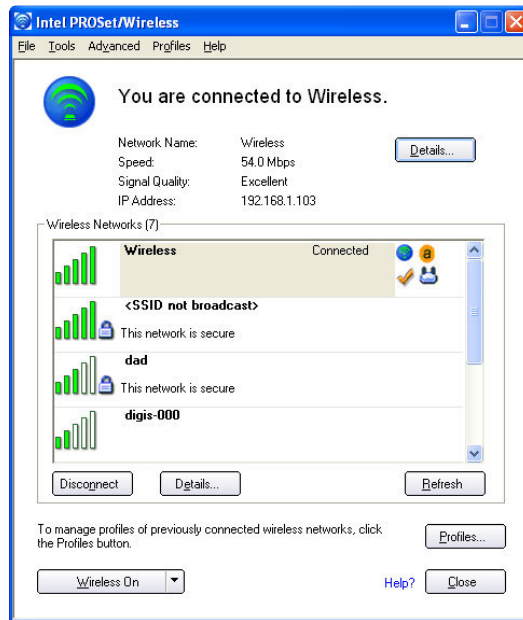
Technical Specifications continued

Operating System	Microsoft* Windows* XP (Professional, Home, Tablet), 2000
Wi-Fi Alliance	Wi-Fi CERTIFIED* for 2.4 GHz and 5GHZ band and WPA
WHQL	YES
WLAN Standard	IEEE 802.11a, IEEE 802.11g and IEEE 802.11b
Channel Support	Channels 1 through 11
Architecture	Infrastructure or ad hoc (peer-to-peer)
Roaming¹	802.11a, 802.11g and 802.11b compliant for seamless roaming between respective access points (802.11b, 802.11g, 802.11a/b/g)
Security[§]	
AUTHENTICATION	LEAP [§] , WPA [§] , 802.1X, EAP-TLS
ENCRYPTION	CKIP, TKIP, 128-bit and 64-bit WEP
Product Safety	UL, C-UL, CB (IEC 60590)

Products Available	Model Name
Intel® PRO/Wireless 3945ABG Network Connection	WM3945ABG
Intel® PRO/Wireless 3945ABG Network Connection (no 802.11a support)	WM3945ABG BGX

Intel® PROSet/Wireless Software[◇]

As part of Intel® PRO Network Connection Software, Intel® PROSet/Wireless software provides driver consistency. Intel® PROSet/Wireless software helps enable a superior mobile experience by providing:



Intel® PROSet/Wireless Software v10.0

- Enhanced even simpler User Interface
- Added IT Administration Tool capabilities
 - Install Package Creator
 - Central Control over driver & app settings
 - Single Sign On for Microsoft* and Novell* networks
- Enhanced VoIP usage model
 - New VoIP API for QoS
 - VoIP Profiles and Statistic reporting
 - Wide band codec support
- Additional Profile management capabilities
- New ISV applications via API (central management, VoIP – Softphone applications, hotspots)
- OS: Microsoft Windows XP*, Microsoft Windows 2000*, Linux driver
- Hardware Support: 2200BG, 2915ABG, 3945ABG, 3945BG, 3945ABG BGX
- Note: Some features only supported on 3945ABG, 3945BG and 3945ABG BGX

* Other names and brands may be claimed as property of others.

+ Wireless connectivity and some features may require you to purchase additional software, services or external hardware. Availability of public wireless LAN access points limited and some hotspots may not support Linux-based Intel® Centrino® mobile technology systems. System performance measured by MobileMark® 2005. System performance, battery life, wireless performance and functionality will vary depending on your specific operating system, hardware and software configurations. See http://www.intel.com/products/centrino/more_info for more information.

§ Some security solutions may not be supported by your PC's operating system and/or by your PC manufacturer. Check with your PC manufacturer for details on availability

◇ Intel® PROSet/Wireless software may not be supported by your PC manufacturer. Check with your PC manufacturer for details on availability.

‡ AES requires PC software upgrade that will be available in 2H'04 and requires access point support. Available on 802.11 b/g only. Check with your PC manufacturer for availability.

^ WME support requires a WME enabled access point and requires a PC software upgrade that will be available in 2H'04. Available on 802.11 b/g only. Check with your PC manufacturer for details on availability.

1 Roaming is supported only between each respective band and mode of access points.

Information in this document is provided in connection with Intel products. No license, express or implied, by estoppel or otherwise, to any intellectual property rights is granted by this document. Except as provided in Intel's Terms and Conditions of Sale for such products, Intel assumes no liability whatsoever, and Intel disclaims any express or implied warranty, relating to sale and/or use of Intel products including liability or warranties relating to fitness for a particular purpose, merchantability, or infringement of any patent, copyright or other intellectual property right. Intel products are not intended for use in medical, life saving, or life sustaining applications. Intel may make changes to specifications and product descriptions at any time, without notice. For the most current product information, please visit: <http://www.intel.com/network>. Intel and the Intel logo are trademarks or registered trademarks of the Intel Corporation or its subsidiaries in the United States and other countries. Copyright © Intel Corporation, 2005. All rights reserved.