

# TEST REPORT

EUT Description	Wireless Module installed in Virtual Reality (VR) HMDA
Brand Name	Intel® Model 13110NGW inside HTC VIVE , model 2Q4L100
Model Name	13110NGW
FCC/IC ID	FCC ID: PD913110NG / IC ID: 1000M-13110NG
Date of Test Start/End	2018-02-28 / 2018-03-02
Features	WiGig (see section 5)

Applicant	Intel Mobile Communications
Address	100 Center Point Circle, Suite 200 / Columbia, SC 29210 / United States
Contact Person	Steven Hackett
Telephone/Fax/ Email	steven.c.hackett@intel.com

Reference Standards	FCC 47 CFR Part §2.1093 FCC 47 CFR Part §15.255(g) (see section 1)
RF Exposure Environment	Portable devices - General population/uncontrolled exposure

Test Report identification	180215-01.TR01
Revision Control	Rev. 01.2 This test report revision replaces any previous test report revision (see section 8)

The test results relate only to the samples tested.

The test report shall not be reproduced in full, without written approval of the laboratory.

# Table of Contents

<b>1. Standards, reference documents and applicable test methods .....</b>	<b>3</b>
<b>2. General conditions, competences and guarantees .....</b>	<b>3</b>
<b>3. Environmental Conditions .....</b>	<b>3</b>
<b>4. Test samples .....</b>	<b>3</b>
<b>5. EUT Features .....</b>	<b>3</b>
<b>6. Remarks and comments .....</b>	<b>4</b>
<b>7. Associated Documents .....</b>	<b>4</b>
<b>8. Document Revision History .....</b>	<b>4</b>
<b>Annex A. Test &amp; System Description .....</b>	<b>5</b>
A.1 POWER DENSITY DEFINITION .....	5
A.2 SPEAG FREE SPACE MEASUREMENT SYSTEM .....	5
A.2.1 Measurement Setup .....	5
A.2.2 E-Field Measurement Probe .....	6
A.2.3 Worst Case Linearization Error .....	7
A.2.4 Data Evaluation .....	8
A.3 SYSTEM CHECK .....	9
A.4 TEST EQUIPMENT LIST .....	10
A.4.1 System #2 .....	10
A.4.2 Shared Equipment .....	10
A.5 MEASUREMENT UNCERTAINTY EVALUATION .....	11
<b>Annex B. Test Results .....</b>	<b>12</b>
B.1 TEST CONDITIONS .....	12
B.1.1 Test signal, Output power and Test Frequencies .....	12
B.1.2 Measurement configuration .....	12
B.2 SYSTEM CHECK MEASUREMENTS .....	12
B.3 TEST RESULTS .....	13
<b>Annex C. Test System Plots .....</b>	<b>14</b>
<b>Annex D. Photographs .....</b>	<b>23</b>
D.1 TEST SETUP .....	23
D.2 TEST SAMPLE .....	24
<b>Annex E. Calibration Certificates .....</b>	<b>25</b>

## 1. Standards, reference documents and applicable test methods

1. FCC 47 CFR Part §2.1093 – Radiofrequency radiation exposure evaluation: portable devices.
2. FCC 47 CFR Part 15 – Subpart C – §15.255 Operation within the band 57-64 GHz.
3. SPEAG Application Note – 5G Compliance Testing with DASY6 (5GModule V1.0Beta)

## 2. General conditions, competences and guarantees

- ✓ Intel Mobile Communications France SAS Wireless RF Lab (Intel WRF Lab) is a testing laboratory competent to perform this testing.
- ✓ Intel WRF Lab only provides testing services and is committed to providing reliable, unbiased test results and interpretations.
- ✓ Intel WRF Lab is liable to the client for the maintenance of the confidentiality of all information related to the item under test and the results of the test.
- ✓ Intel WRF Lab has developed calibration and proficiency programs for its measurement equipment to ensure correlated and reliable results to its customers.
- ✓ This report is only referred to the item that has undergone the test.
- ✓ This report does not imply an approval of the product by the Certification Bodies or competent Authorities.

## 3. Environmental Conditions

- ✓ At the site where the measurements were performed the following limits were not exceeded during the tests:

Temperature	21°C ± 1°C
Humidity	30% ± 10%

## 4. Test samples

Sample	Control #	Description	Model	Serial #	Date of receipt	Note
#01	180215-01.S01	VR HMDA	2Q4L100	E230068-INT	2018-02-15	NA
	180215-01.S03	Power Bank	NA	NA	2018-02-15	NA

## 5. EUT Features

Brand Name	Intel® Model 13110 inside VR HMDA Model 2Q4L100
Model Name	13110NGW
FCC/IC ID	FCC: PD913110NG/ IC: 1000M-13110NG
Software Version	V4.0.10289.11
Prototype / Production	Production
Host Identification	HTC VIVE series, model 2Q4L100
Exposure Conditions	Free space power density
Supported Radios	WiGig 60GHz (57.24 – 63.72 GHz)
Antenna Information	RFEM3 (10101RRFW)

## 6. Remarks and comments

1. Per the location of the active antenna array (a.k.a. RFEM3) in the VR HMDA model HTC 2Q4L100 platform, the distance between the antenna arrays to the body of an end user, at the closest contact point, will be in the near-field.
2. The determination of the near-field average power density is performed using an EM simulation and a near-field measurement. An EM simulation that includes the RFEM 3 transmitter model embedded inside the VR HMDA model HTC VIVE is used to determine the worst case configuration and the correspondent near-field power density. The simulation method is described in associated document [2]. The comparison between simulation and measurement are described in document [3].
3. The worst-case's power density found in simulation is supported by performing the E-field measurement in the near-field using SPEAG system. The measurement system and test results are presented in this report.
4. Previous filings for similar devices (PD9, RFEM) showed on order of 3 dB differences when only the normal component of the Poynting vector was used to determine power density, vs. using all three vector components. In this filing, the simulations used three components of the Poynting vector (consistent with FCC procedures), whereas the version of the measurement system available at this time used only the normal component to determine maximum power density results. Intel is collaborating with the measurement system vendor so that future filings for similar devices may use other methods for power density calculations, and as consistent with technical considerations in the IEEE/IEC measurement standards working group. The highest reported power density results (0.553 mW/cm<sup>2</sup> simulated, 0.497 mW/cm<sup>2</sup>; 11% relative difference) are on the order of half of the FCC limit (1 mW/cm<sup>2</sup>). Additional margins for RF exposure compliance are provided by that the evaluations planes are selected relatively close to the device enclosure at 9.3 mm spacing, with closest portions of user's head at 12.1 mm.

## 7.0 Document Revision History

Revision #	Date	Modified by	Revision Details
Rev. 00	2018-03-02	T. ANDRIAMIHARIVOLAMENA K. RIDA	First Issue
Rev. 01	2018-04-04	K. RIDA	Revision 01 according to FCC questions

## 7. Associated Documents

- [1] 180215-VR HMDA HTC 2Q4L100- Theory of Operation Report
- [2] 180215-VR HMDA HTC 2Q4L100 - MPE Simulation Report
- [3] 180215-VR HMDA HTC 2Q4L100 - Simulations and Measurements Comparisons and Compliance Descriptions Report

# Annex A. Test & System Description

## A.1 Power Density Definition

The power density for an electromagnetic field represents the rate of energy transfer per unit area. The local power density (i.e. Poynting vector) at a given spatial point is deduced from electromagnetic fields by the following formula:

$$\vec{P}_{local} = \frac{1}{2} \text{Re} (\vec{E} \times \vec{H}^*)$$

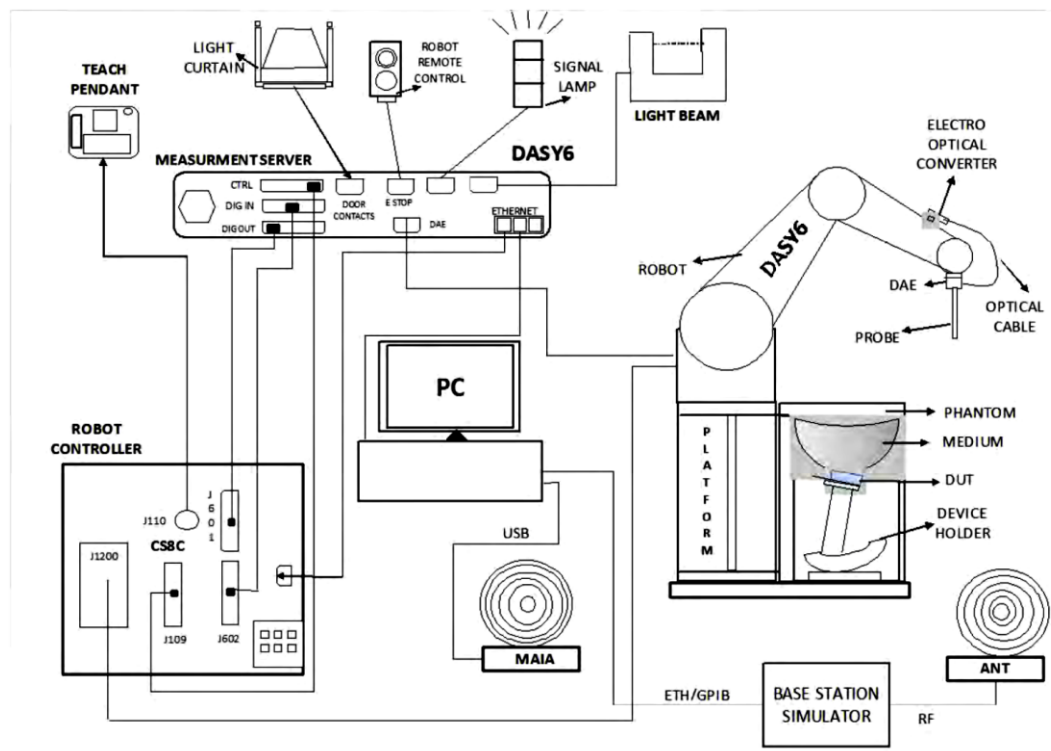
Where  $\vec{E}$  is the complex electric field peak phasor and  $\vec{H}^*$  is the complex conjugate magnetic field peak phasor. This power density is also called “single-point” or “spot power density”.

Considering that the FCC’s Maximum Permissible Exposure (MPE) limit is applicable on the average power density inside 1cm<sup>2</sup> area, the single point power densities in the evaluation plane should be averaged inside the 1cm<sup>2</sup> area.

## A.2 SPEAG free space Measurement System

### A.2.1 Measurement Setup

The DASY6 system for performing compliance tests consists of the following items:



- ✓ A standard high precision 6-axis robot (Stäubli TX/RX family) with controller, teach pendant and software. It includes an arm extension for accommodating the data acquisition electronics (DAE)
- ✓ An mm-wave E-field probe optimized and calibrated for the targeted measurements.
- ✓ A data acquisition electronics (DAE) which performs the signal amplification, signal multiplexing, AD-conversion, offset measurements, mechanical surface detection, collision detection, etc. The unit is battery powered with standard or rechargeable batteries. The signal is optically transmitted to the EOC.
- ✓ The Electro-optical Converter (EOC) performs the conversion from optical to electrical signals for the digital communication to the DAE. The EOC signal is transmitted to the measurement server.
- ✓ The function of the measurement server is to perform the time critical tasks such as signal filtering, control of the robot operation and fast movements interrupts.
- ✓ The Light Beam used is for probe alignment. This improves the (absolute) accuracy of the probe positioning.
- ✓ A computer running Win7 professional operating system and the cDASY6 software.
- ✓ Remote control and teach pendant as well as additional circuitry for robot safety such as warning lamps, etc.

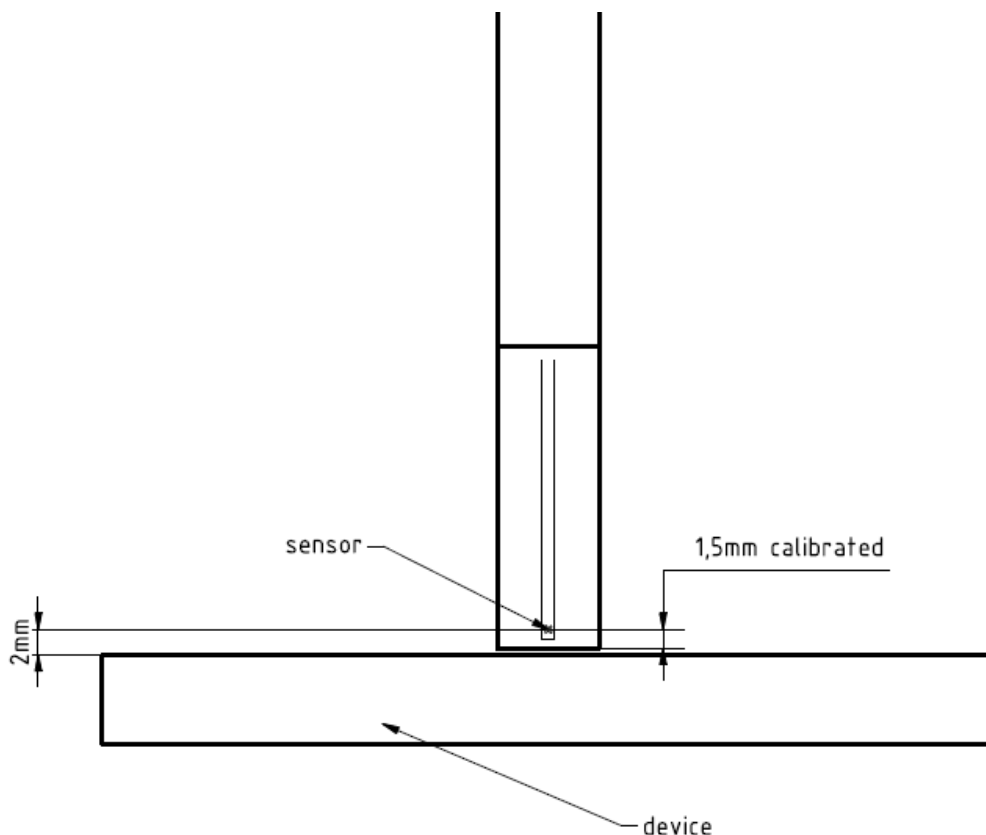
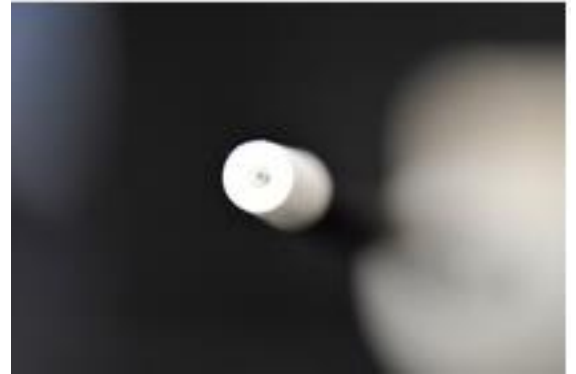
## A.2.2 E-Field Measurement Probe

The probe consists of two dipoles (0.8 mm length) optimally arranged with different angles ( $\gamma_1$  and  $\gamma_2$ ) to obtain pseudo-vector information, printed on glass substrate protected by high density foam that allows low perturbation of the measured field.

Three or more measurements are taken for different probe rotational angles, deriving the amplitude and polarization information.

The probe's characteristics are:

Frequency Range	750 MHz – 110 GHz <sup>1</sup>
Length	320 mm
Probe tip external diameter	8 mm
Probe's two dipoles length	0.9mm – Diode loaded
Probe's substrate	Quartz 0.9 x 20 x 0.18mm ( $\epsilon_r=3.8$ )
Distance between diode sensors and probe's tip	1.5 mm
Axial Isotropy	$\pm 0.6$ dB
Maximum operating E-field	3000 V/m
Lower E-field detection threshold	5 V/m @ 60 GHz
Minimum Mechanical separation between probe tip and a Surface	0.5mm
Calibration reference point	Diode Sensor



<sup>1</sup> The probe calibration range is 750 MHz – 90 GHz

### A.2.3 Worst Case Linearization Error

For continuously transmitting signals (100% duty cycle), the worst case linearization error is given by the difference between non linearized voltage and linearized voltage using CW parameters. The error is increasing with the voltage levels. In our particular case, the measured voltages averaged over the signal period are below 1mV. We use 1mV in the below calculation to have the worst case condition. The signal PAR (Peak to Average Ratio) is 6dB and the diode compression point 100mV.

The maximum voltage through the diode is given by:

$$v_{peak} = v_{meas\ avg} \times PAR_{linear}$$

$$v_{peak} = 1 \times 4 = 4\ mV$$

The linearized voltage using CW parameter is given by:

$$v_{lin\ peak} = v_{peak} + \frac{v_{peak}^2}{diode\ compression\ point}$$

$$v_{lin\ peak} = 4 + \frac{4^2}{100} = 4.16\ mV$$

The worst case linearization error is:

$$lin\ error = \frac{v_{lin\ peak} - v_{peak}}{v_{peak}} = \frac{4.16 - 4}{4} = 1.04 = 4\%$$

## **A.2.4 Data Evaluation**

### **A.2.4.1 Scan**

The scan involves the measurement of two planes with three different probe rotations. The grid steps are optimized by the software based on the test frequency. The location of the lowest measurement plane is defined by the distance of first measurement layer from device under test (DUT) entered by the user. The DUT location settings can be used to offset the center of the grid.

### **A.2.4.2 Total Field and Power Flux Density Reconstruction**

Computation of the power density in general requires knowledge of the electric (E-) and magnetic (H-) field amplitudes and phases in the plane of incidence. Reconstruction of these quantities from pseudo-vector E-field measurements is feasible, as they are constrained by Maxwell's equations.

The reconstruction algorithm developed by the system manufacturer, together with the ability of the probe to measure extremely close to the source without perturbing the field, permits reconstruction of the E- and H-fields, as well as of the power density, on measurement planes located as near as 0.5mm away in the frequency band of 60 GHz.

The average of the reconstructed power density is evaluated over a circular area in each measurement plane. The area of the circle is defined by the user; the default is 1 cm<sup>2</sup>.

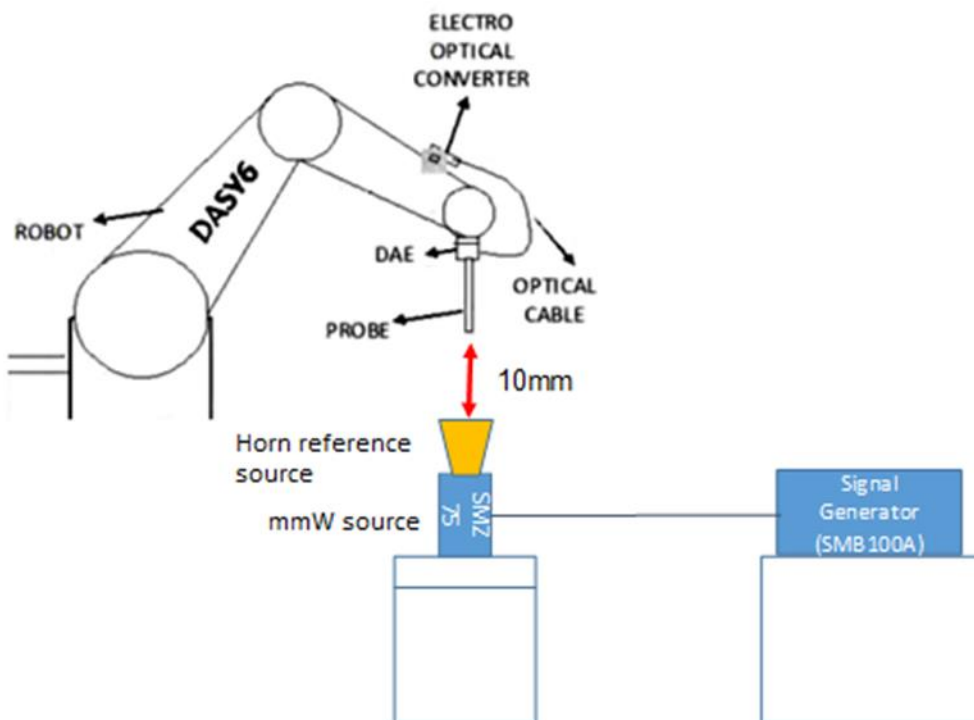
### A.3 System Check

The system performance check verifies that the system operates within its specifications. It is recommended that the system performance check be performed prior to any usage of the system in order to guarantee reproducible results. The system performance check uses normal E-field measurements in a simplified setup with a well characterized source. This setup was selected to give a high sensitivity to all parameters that might fail or vary over time. The system check does not intend to replace the calibration of the components, but indicates situations where the system uncertainty is exceeded due to drift or failure.

In the simplified setup for system check, the EUT is replaced by a calibrated source and the power source is replaced by a controlled continuous wave generated by a signal generator. The calibrated source must be placed at the correct distance from the E-field probe according to the calibration certificate.



First, the power meter is connected to the output of the signal generator to measure the forward power at the location of the connector to the system check source. The signal generator is adjusted for the desired forward power to match the system check source calibration setup at the connector as read by power meter. Then the power meter is replaced by the system check source.



The output power on the reference source is set to 5.0 dBm (3.16 mW) and E-field results are normalized to a forward power of 10mW to compare the values with the calibration report.

## A.4 Test Equipment List

### A.4.1 System #2

ID#	Device	Type/Model	Serial #	Manufacturer	Cal. Date	Cal. Due Date
0575	E-field mm-Wave Probe	EUmmWV2	9354	SPEAG	2017-05-08	2018-05-08
0628	6-axis Robot	TX60 L	F17/RCB1/A/01	STAÜBLI	NA	NA
0631	Robot Remote Control	P/N: SE UMS 032 AA	NA	STAÜBLI	NA	NA
0632	Measurement Server	SE UMS 028 BB	1547	SPEAG	NA	NA
0633	Electro-Optical Converter	EOC60	1104	SPEAG	NA	NA
0635	5G Phantom table professional	Table	NA	SPEAG	NA	NA
0636	Light Beam Unit	LB5 / 80	1030	Di-Soric	NA	NA
0638	Measurement SW	cDASY6 5G module v1.0.0.12565	9-5ED1AC01	SPEAG	NA	NA
0605	Data Acquisition Electronics	DAE4	1517	SPEAG	2017-05-24	2018-05-24
0658	5G Phantom	5G	NA	SPEAG	NA	NA

### A.4.2 Shared Equipment

ID#	Device	Type/Model	Serial #	Manufacturer	Cal. Date	Cal. Due Date
0012	Power Meter	NRP2	101567	R&S	N/A	N/A
0014	Power Sensor	NRP-Z57	101280	R&S	2017-04-25	2019-04-25
0309	Signal Generator	SMB100A	178217	R&S	2017-03-15	2019-03-15
0427	Frequency Multiplier, 50GHz-75GHz	SMZ75	101257	R&S	N/A	N/A
0586	Temperature & Humidity Logger	RA12E-TH1-RAS	RA12-B9BD70	AVTECH	2017-11-27	2019-11-27
0590	Horn reference source	PE9881-24	37/2016	Pasternack	2017-05-08	2019-05-08

## A.5 Measurement Uncertainty Evaluation

The system uncertainty evaluation is shown in the below table:

Uncertainty Budget (28 - 90 GHz range)						
Error Description	Uncertainty Value (±dB)	Probability Distribution	Div.	(c <sub>i</sub> )	Std. Unc. (±dB)	(v <sub>i</sub> ) v <sub>eff</sub>
<b>Measurement System</b>						
Probe Calibration	0.43	N	1	1	0.43	∞
Hemispherical Isotropy	0.60	R	√3	1	0.35	∞
Linearity	0.20	R	√3	1	0.12	∞
System Detection Limits	0.04	R	√3	1	0.02	∞
Modulation Response*	0.17	R	√3	1	0.10	∞
Readout Electronics	0.01	N	1	1	0.01	∞
Response Time	0.03	R	√3	1	0.02	∞
Integration Time	0.11	R	√3	1	0.06	∞
RF Ambient Noise	0.04	R	√3	1	0.02	∞
RF Ambient Reflections	0.21	R	√3	1	0.12	∞
Probe Positioner	0.04	R	√3	1	0.02	∞
Probe Positioning	0.11	R	√3	1	0.06	∞
S <sub>avg</sub> Reconstruction	0.61	R	√3	1	0.35	∞
<b>Test Sample Related</b>						
Power Drift	0.57	R	√3	1	0.33	∞
Power Scaling	0.00	R	√3	1	0.00	∞
Combined Std. Uncertainty					0.77	∞
<b>Expanded Std. Uncertainty</b>					<b>1.54</b>	

\* The modulation response contribution in A.5 is calculated according to 4% linearization error of A.2.3 by:

$$\text{Uncertainty Modulation Response (dB)} = 10 \log(1 + 0.04) = 0.17$$

# Annex B. Test Results

## B.1 Test Conditions

### B.1.1 Test signal, Output power and Test Frequencies

The device under test was an Intel 13110NGW WiGig module (FCC ID: PD918265NG), including an active antenna array, embedded inside the VR HMDA model HTC VIVE.

The device was put into operation by using an Intel proprietary software (DRTU version V4.0.10289.11).

### B.1.2 Measurement configuration

The measurements were performed in multiple evaluation planes (see Annex E) for the 6 worst cases power density shown in table below, and calculated among the 72 worst cases presented in [2].

	Plane position	MCS index <sup>1</sup> @ Duty Cycle	Subset	Channel	Worst-case	Scan Plane size [cm <sup>2</sup> ]
Case #1	EpB	MCS 1 @ 100%	3	1	1	3.73x3.73
Case #2	EpB	MCS 1 @ 100%	3	2	1	3.73x3.73
Case #3	EpA	MCS 1 @ 100%	2	3	1	3.73x3.73
Case #4	EpA1	MCS 1 @ 100%	1	1	1	3.73x3.73
Case #5	EpB1	MCS 1 @ 100%	1	1	1	3.73x3.73
Case #6	EpB1	MCS 1 @ 100%	1	2	1	3.73x3.73

## B.2 System Check Measurements

Frequency	Signal Type	Target E-field <sup>2</sup> (V/m)	Measured E-field <sup>2</sup> (V/m)	Deviation (%)	Date
60 GHz	Continuous Wave	90.3	93.18	3.19	2018-03-01

The fields presented in the System Check Measurements table are RMS values normalized to 10 mW input power. As indicated in the calibration certificate of the reference horn antenna (see Annex F), the maximum measured E-field value at 10 mm is 67.91 V/m with 7.53 dBm (5.66 mW) source power. This is equivalent to 90.3 V/m target E-field value showed in the table above normalized to 10 dBm (10 mW) source power.

The system check measurement is performed at 5.0 dBm<sup>3</sup> (3.16 mW) source power. The maximum measured E-field value is 52.4 V/m (see plot 7 in Annex C). This is equivalent to 93.18 V/m measured E-field value showed in the table above and normalized to 10 dBm source power.

<sup>1</sup> MCS1 Modulation and coding scheme uses  $\pi/2$ -BPSK modulation

<sup>2</sup> Normalized to 10mW

<sup>3</sup> The maximum available power level of the mmW source is around 5.5 dBm.

### B.3 Test Results

Test case	Evaluation plane	Max E-Field [V/m]	Max H-Field [A/m]	Max localized PD [mW/cm <sup>2</sup> ]	Spatially Averaged PD [mW/cm <sup>2</sup> ]	Plot #
Case #1	EpB	136.794	0.415	2.697	0.754	1
Case #2	EpB	138.181	0.534	2.680	0.903	2
Case #3	EpA	107.186	0.419	1.567	0.807	3
Case #4	EpA1	109.482	0.408	1.967	0.540	4
Case #5	EpB1	135.105	0.462	2.488	0.853	5
Case #6	EpB1	156.873	0.438	2.652	0.950	6

All field' strengths shown in the table are peak values.

# Annex C. Test System Plots

---

1. Case # 1 – 0 mm distance from Evaluation plane .....	15
2. Case # 2 – 0 mm distance from Evaluation plane .....	16
3. Case # 3 – 0 mm distance from Evaluation plane .....	17
4. Case # 4 – 0 mm distance from Evaluation plane .....	18
5. Case # 5 – 0 mm distance from Evaluation plane .....	19
6. Case # 6 – 0 mm distance from Evaluation plane .....	20
7. System Check 60 GHz .....	21

## 1. Case # 1 – 0 mm distance from Evaluation plane

**DUT: Sample 180215-01.S01; Type: HTC VIVE VR-HMDA; Serial: E230068-INT**

Communication System: UID 0, Wi-Gig (0); Communication System Band: 60 GHz; Frequency: 58320MHz;

Communication System PAR: 0 dB

Medium parameters used:  $\sigma = 0$  S/m,  $\epsilon_r = 1$ ;  $\rho = 0$  kg/m<sup>3</sup>

Phantom section: Table Section

Measurement Standard: DASY6 (IEEE/IEC/ANSI C63.19-2011)

DASY Configuration:

- Probe: EUmmW - SN9354; ConvF(1, 1, 1); Calibrated: 2017-05-08;
  - Modulation Compensation:
- Sensor-Surface: 0mm (Fix Surface),  $z = 0$  mm
- Electronics: DAE4 Sn1517; Calibrated: 2017-05-24
- Phantom: Cover; Type: SPEAG Phantom Cover;
- cDASY6 5G Module V1.0.0.12565;

**Sub-array: 3**

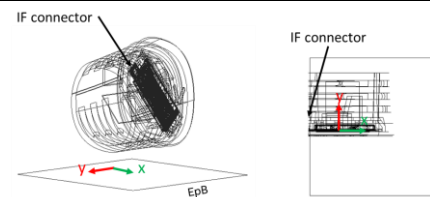
**Channel: 1**

**Distance: 0mm**

**Sample: 180215-01.S01**

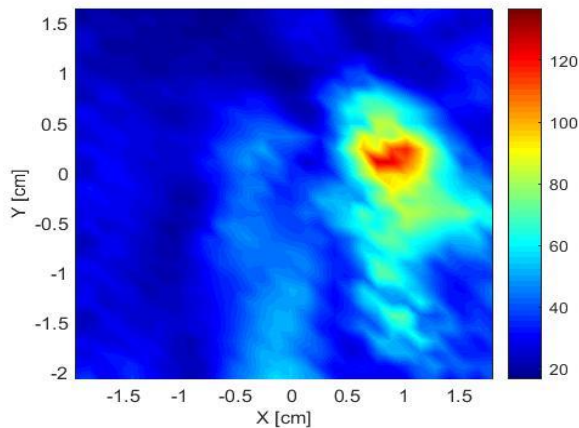
**Scan area / Resolution: [37.3x37.3] mm<sup>2</sup> / 1.3 mm**

**Evaluation plane: EpB**



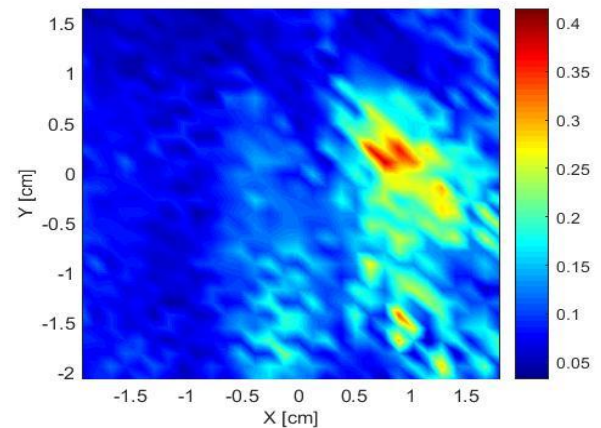
### Measured E-field

Maximum value = 136.794 V/m - Peak



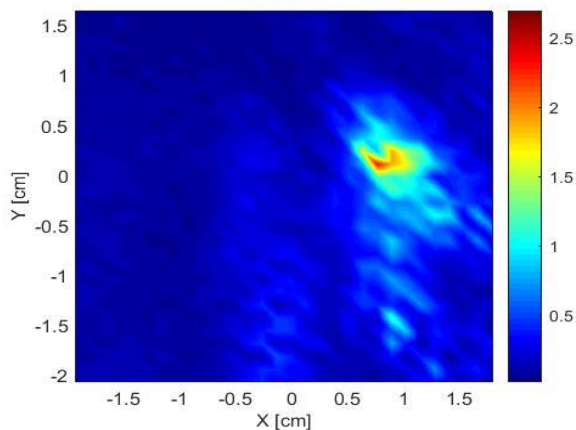
### Reconstructed H-field (from Measured E-field)

Maximum value = 0.415 A/m - Peak



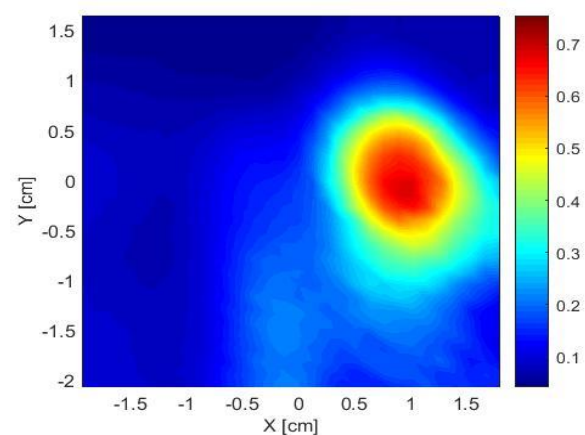
### Reconstructed localized free space power density

Maximum value = 2.697 mW/cm<sup>2</sup>



### Reconstructed Spatially Averaged power density

Maximum value = 0.754 mW/cm<sup>2</sup>



## 2. Case # 2 – 0 mm distance from Evaluation plane

**DUT: Sample 180215-01.S01; Type: HTC VIVE VR-HMDA; Serial: E230068-INT**

Communication System: UID 0, Wi-Gig (0); Communication System Band: 60 GHz; Frequency: 60480MHz;

Communication System PAR: 0 dB

Medium parameters used:  $\sigma = 0$  S/m,  $\epsilon_r = 1$ ;  $\rho = 0$  kg/m<sup>3</sup>

Phantom section: Table Section

Measurement Standard: DASY6 (IEEE/IEC/ANSI C63.19-2011)

DASY Configuration:

- Probe: EUmmW - SN9354; ConvF(1, 1, 1); Calibrated: 2017-05-08;
  - Modulation Compensation:
- Sensor-Surface: 0mm (Fix Surface),  $z = 0$  mm
- Electronics: DAE4 Sn1517; Calibrated: 2017-05-24
- Phantom: Cover; Type: SPEAG Phantom Cover;
- cDASY6 5G Module V1.0.0.12565;

**Sub-array: 3**

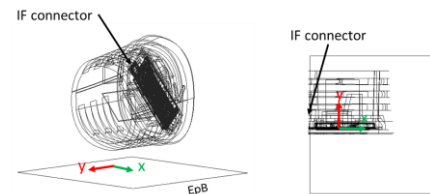
**Channel: 2**

**Distance: 0mm**

**Sample: 180215-01.S01**

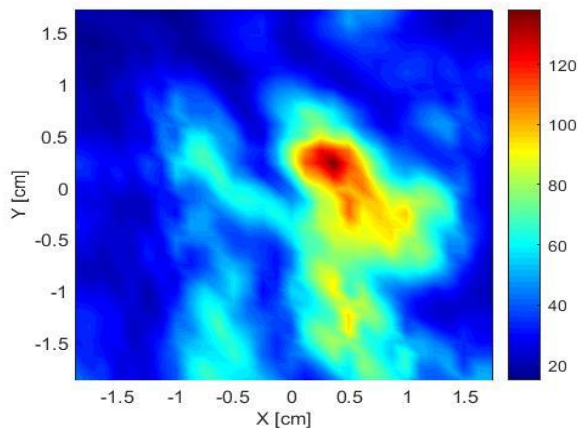
**Scan area / Resolution: [37.3x37.3] mm<sup>2</sup> / 1.24 mm**

**Evaluation plane: EpB**



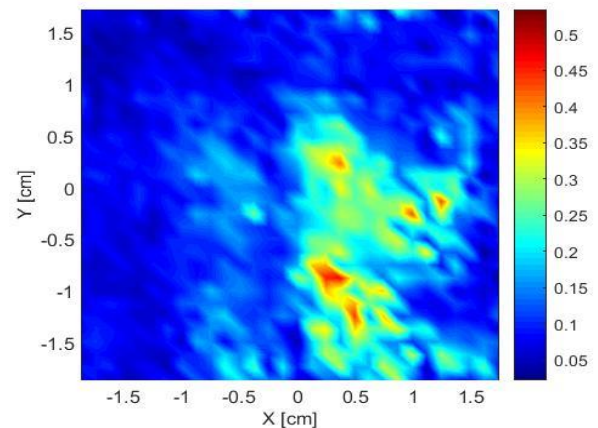
### Measured E-field

Maximum value = 138.181 V/m - Peak



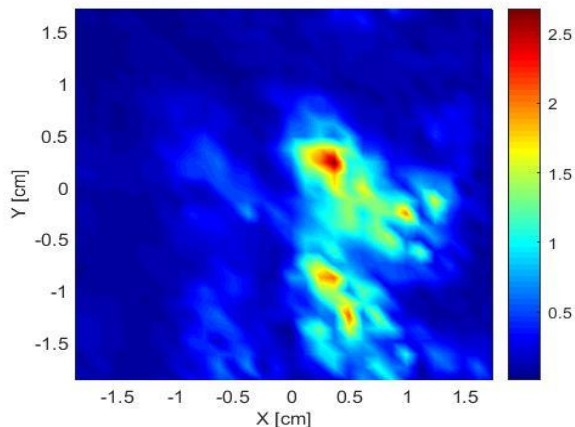
### Reconstructed H-field (from Measured E-field)

Maximum value = 0.534 A/m - Peak



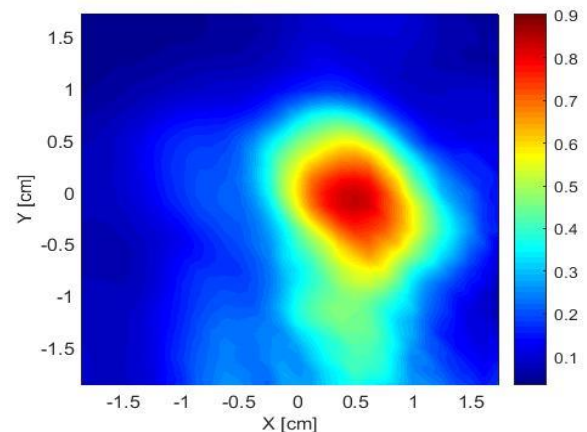
### Reconstructed localized free space power density

Maximum value = 2.680 mW/cm<sup>2</sup>



### Reconstructed Spatially Averaged power density

Maximum value = 0.903 mW/cm<sup>2</sup>



### 3. Case # 3 – 0 mm distance from Evaluation plane

**DUT: Sample 180215-01.S01; Type: HTC VIVE VR-HMDA; Serial: E230068-INT**

Communication System: UID 0, Wi-Gig (0); Communication System Band: 60 GHz; Frequency: 62640MHz;

Communication System PAR: 0 dB

Medium parameters used:  $\sigma = 0$  S/m,  $\epsilon_r = 1$ ;  $\rho = 0$  kg/m<sup>3</sup>

Phantom section: Table Section

Measurement Standard: DASy6 (IEEE/IEC/ANSI C63.19-2011)

DASY Configuration:

- Probe: EUmmW - SN9354; ConvF(1, 1, 1); Calibrated: 2017-05-08;
  - Modulation Compensation:
- Sensor-Surface: 0mm (Fix Surface),  $z = 0$  mm
- Electronics: DAE4 Sn1517; Calibrated: 2017-05-24
- Phantom: Cover; Type: SPEAG Phantom Cover;
- cDASY6 5G Module V1.0.0.12565;

**Sub-array: 2**

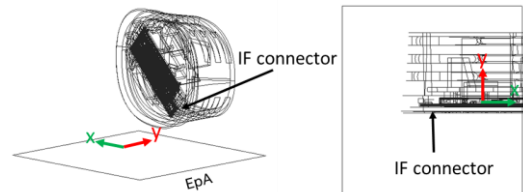
**Channel: 3**

**Distance: 0mm**

**Sample: 180215-01.S01**

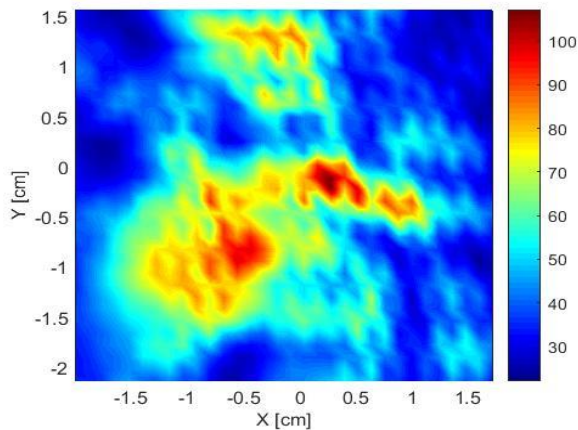
**Scan area / Resolution: [37.3x37.3] mm<sup>2</sup> / 1.19 mm**

**Evaluation plane: EpA**



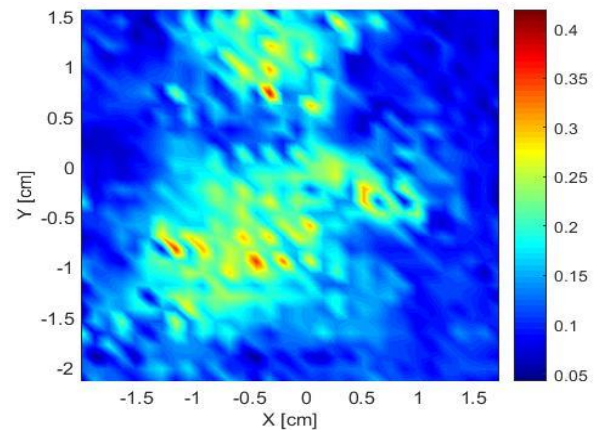
#### Measured E-field

Maximum value = 107.186 V/m - Peak



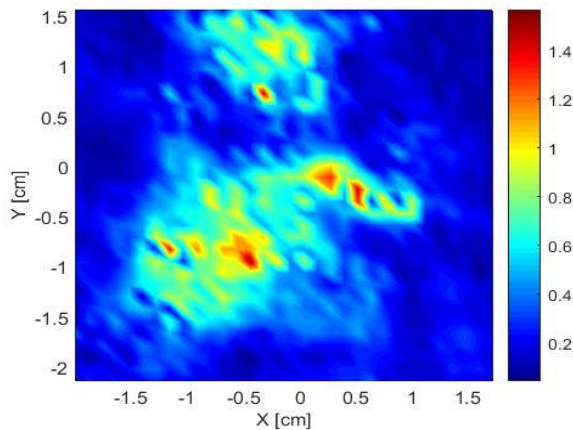
#### Reconstructed H-field (from Measured E-field)

Maximum value = 0.419 A/m - Peak



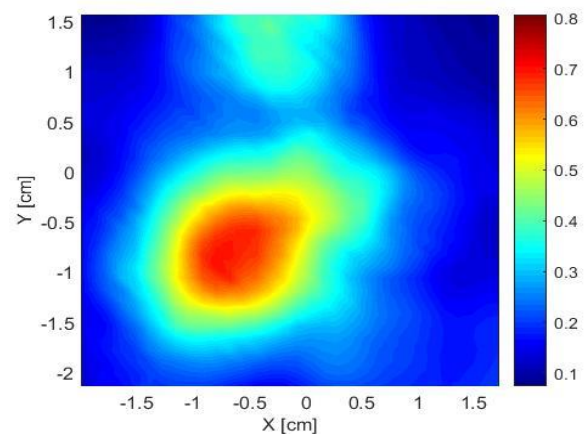
#### Reconstructed localized free space power density

Maximum value = 1.567 mW/cm<sup>2</sup>



#### Reconstructed Spatially Averaged power density

Maximum value = 0.807 mW/cm<sup>2</sup>



#### 4. Case # 4 – 0 mm distance from Evaluation plane

**DUT: Sample 180215-01.S01; Type: HTC VIVE VR-HMDA; Serial: E230068-INT**

Communication System: UID 0, Wi-Gig (0); Communication System Band: 60 GHz; Frequency: 58320MHz;

Communication System PAR: 0 dB

Medium parameters used:  $\sigma = 0$  S/m,  $\epsilon_r = 1$ ;  $\rho = 0$  kg/m<sup>3</sup>

Phantom section: Table Section

Measurement Standard: DASY6 (IEEE/IEC/ANSI C63.19-2011)

DASY Configuration:

- Probe: EUmmW - SN9354; ConvF(1, 1, 1); Calibrated: 2017-05-08;
  - Modulation Compensation:
- Sensor-Surface: 0mm (Fix Surface),  $z = 0$  mm
- Electronics: DAE4 Sn1517; Calibrated: 2017-05-24
- Phantom: Cover; Type: SPEAG Phantom Cover;
- cDASY6 5G Module V1.0.0.12565;

**Sub-array: 1**

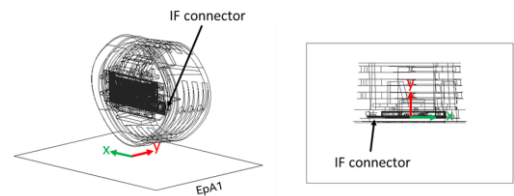
**Channel: 1**

**Distance: 0mm**

**Sample: 180215-01.S01**

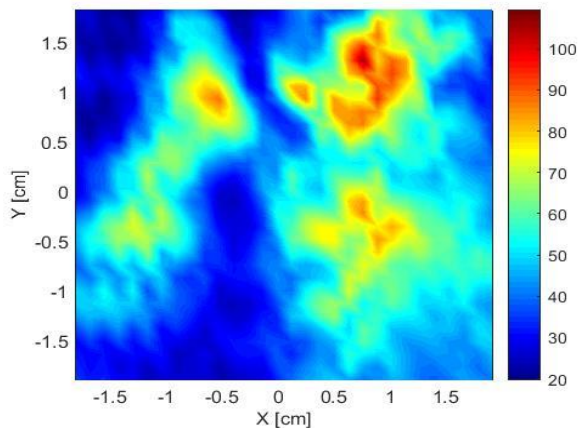
**Scan area / Resolution: [37.3x37.3] mm<sup>2</sup> / 1.29 mm**

**Evaluation plane: EpA1**



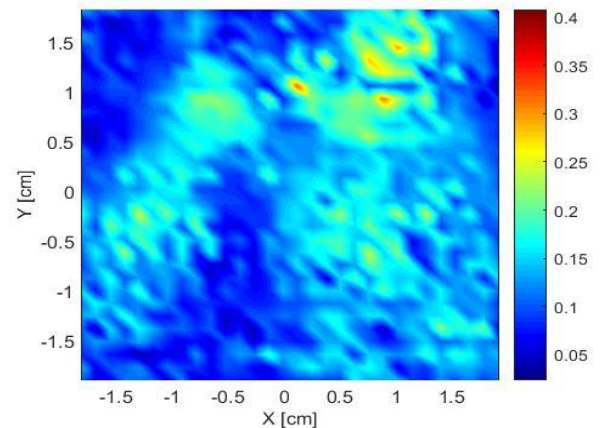
##### Measured E-field

Maximum value = 109.482 V/m - Peak



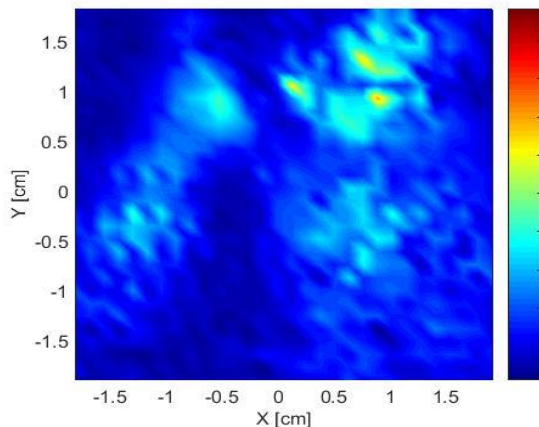
##### Reconstructed H-field (from Measured E-field)

Maximum value = 0.408 A/m - Peak



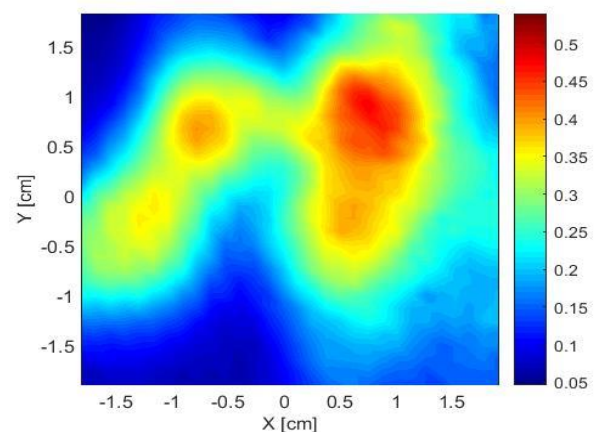
##### Reconstructed localized free space power density

Maximum value = 1.967 mW/cm<sup>2</sup>



##### Reconstructed Spatially Averaged power density

Maximum value = 0.540 mW/cm<sup>2</sup>



## 5. Case # 5 – 0 mm distance from Evaluation plane

**DUT: Sample 180215-01.S01; Type: HTC VIVE VR-HMDA; Serial: E230068-INT**

Communication System: UID 0, Wi-Gig (0); Communication System Band: 60 GHz; Frequency: 58320MHz;

Communication System PAR: 0 dB

Medium parameters used:  $\sigma = 0$  S/m,  $\epsilon_r = 1$ ;  $\rho = 0$  kg/m<sup>3</sup>

Phantom section: Table Section

Measurement Standard: DASY6 (IEEE/IEC/ANSI C63.19-2011)

DASY Configuration:

- Probe: EUmmW - SN9354; ConvF(1, 1, 1); Calibrated: 2017-05-08;
  - Modulation Compensation:
- Sensor-Surface: 0mm (Fix Surface),  $z = 0$  mm
- Electronics: DAE4 Sn1517; Calibrated: 2017-05-24
- Phantom: Cover; Type: SPEAG Phantom Cover;
- cDASY6 5G Module V1.0.0.12565;

**Sub-array: 1**

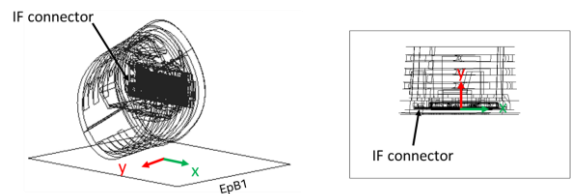
**Channel: 1**

**Distance: 0mm**

**Sample: 180215-01.S01**

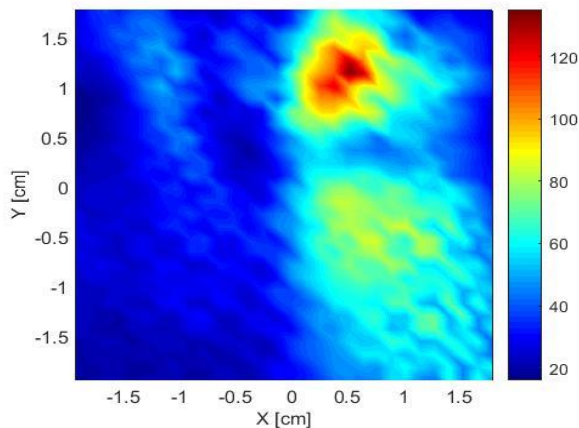
**Scan area / Resolution: [37.3x37.3] mm<sup>2</sup> / 1.29 mm**

**Evaluation plane: EpB1**



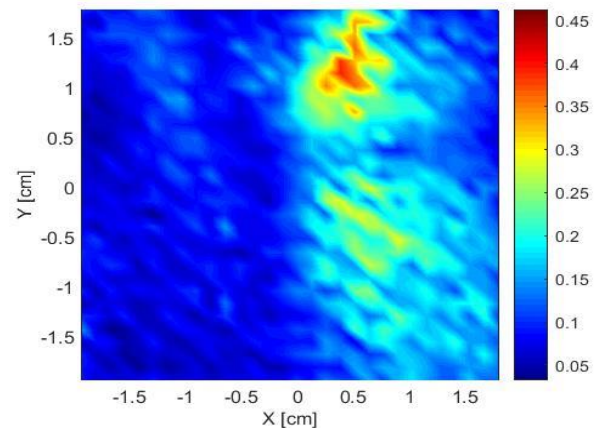
### Measured E-field

Maximum value = 135.105 V/m - Peak



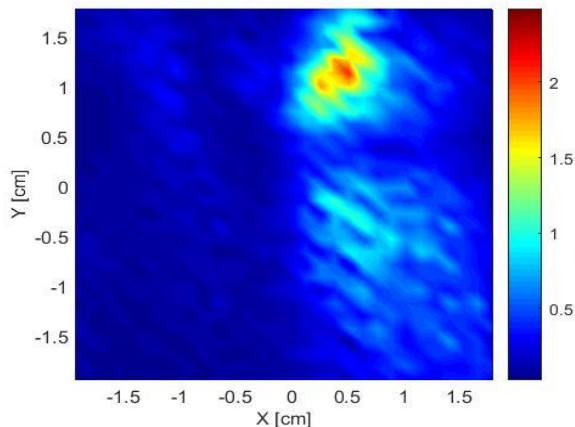
### Reconstructed H-field (from Measured E-field)

Maximum value = 0.462 A/m - Peak



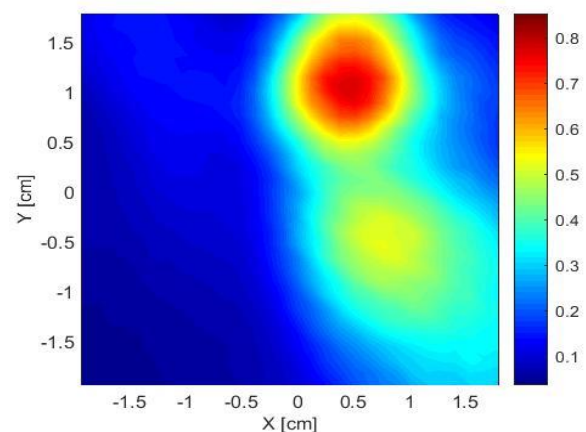
### Reconstructed localized free space power density

Maximum value = 2.488 mW/cm<sup>2</sup>



### Reconstructed Spatially Averaged power density

Maximum value = 0.853 mW/cm<sup>2</sup>



## 6. Case # 6 – 0 mm distance from Evaluation plane

**DUT: Sample 180215-01.S01; Type: HTC VIVE VR-HMDA; Serial: E230068-INT**

Communication System: UID 0, Wi-Gig (0); Communication System Band: 60 GHz; Frequency: 60480 MHz;

Communication System PAR: 0 dB

Medium parameters used:  $\sigma = 0$  S/m,  $\epsilon_r = 1$ ;  $\rho = 0$  kg/m<sup>3</sup>

Phantom section: Table Section

Measurement Standard: DASY6 (IEEE/IEC/ANSI C63.19-2011)

DASY Configuration:

- Probe: EUmmW - SN9354; ConvF(1, 1, 1); Calibrated: 2017-05-08;
  - Modulation Compensation:
- Sensor-Surface: 0mm (Fix Surface),  $z = 0$  mm
- Electronics: DAE4 Sn1517; Calibrated: 2017-05-24
- Phantom: Cover; Type: SPEAG Phantom Cover;
- cDASY6 5G Module V1.0.0. 12565;

**Sub-array: 1**

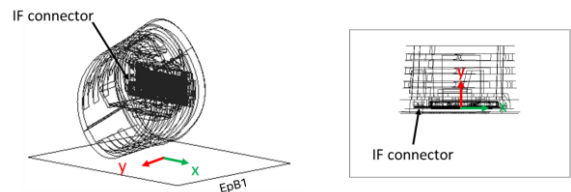
**Channel: 2**

**Distance: 0mm**

**Sample: 180215-01.S01**

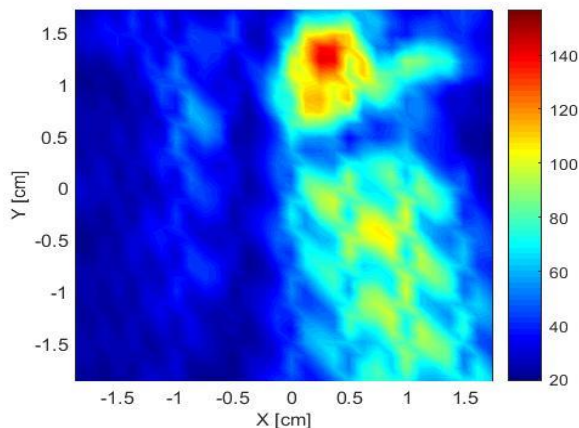
**Scan area / Resolution: [37.3x37.3] mm<sup>2</sup> / 1.24 mm**

**Evaluation plane: EpB1**



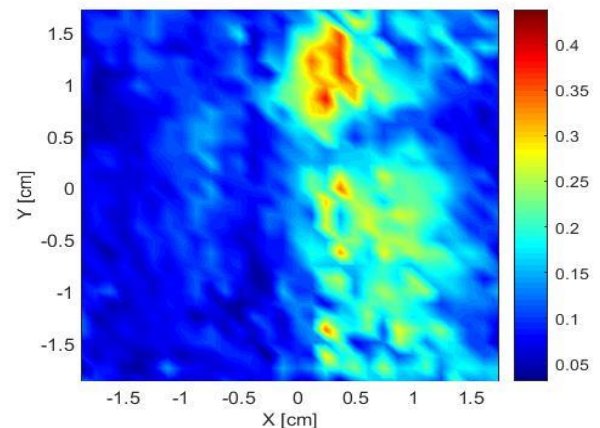
### Measured E-field

Maximum value = 156.873 V/m - Peak



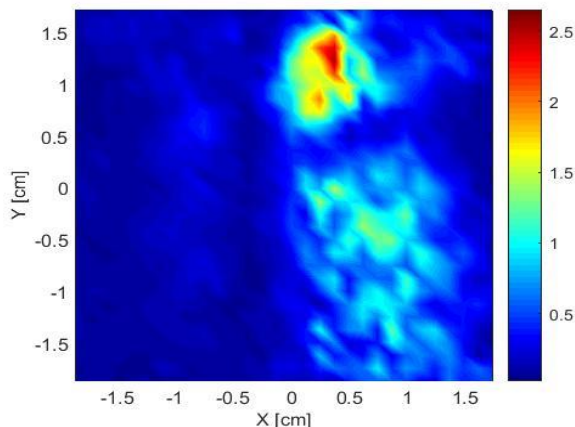
### Reconstructed H-field (from Measured E-field)

Maximum value = 0.438 A/m - Peak



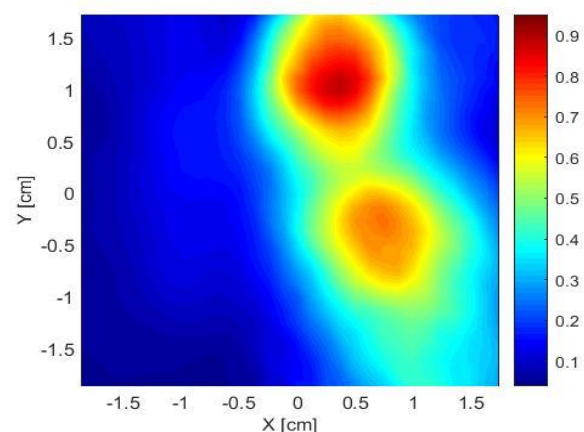
### Reconstructed localized free space power density

Maximum value = 2.652 mW/cm<sup>2</sup>



### Reconstructed Spatially Averaged power density

Maximum value = 0.950 mW/cm<sup>2</sup>



## 7. System Check 60 GHz

**DUT: Horn reference source; Type: PE9881-24; Serial: 201715**

Communication System: UID 0, Wi-Gig (0); Communication System Band: 60 GHz; Frequency: 60000 MHz;

Communication System PAR: 0 dB

Medium parameters used:  $\sigma = 0$  S/m,  $\epsilon_r = 1$ ;  $\rho = 0$  kg/m<sup>3</sup>

Phantom section: Table Section

Measurement Standard: DASY6 (IEEE/IEC/ANSI C63.19-2011)

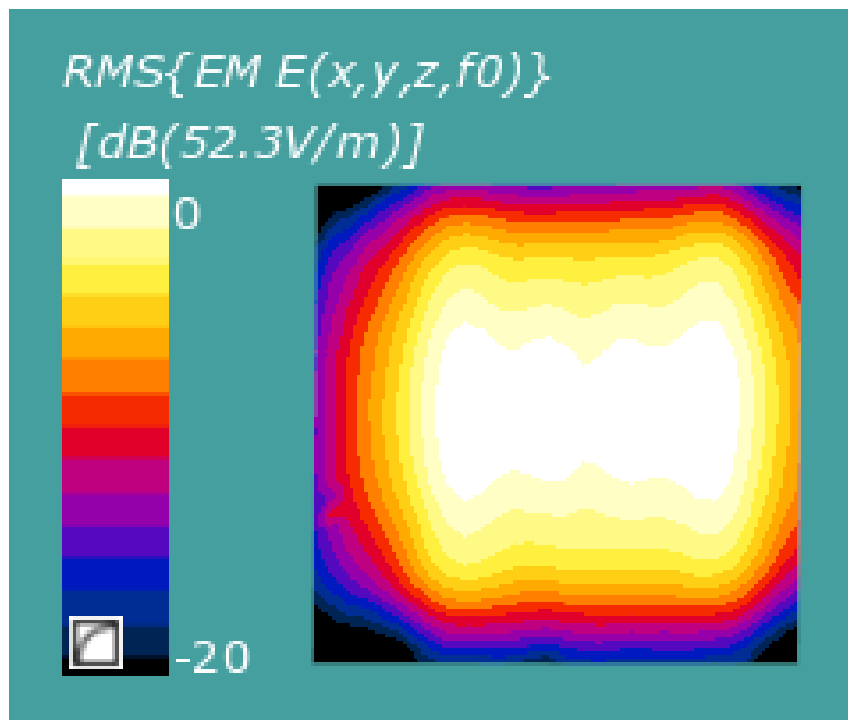
DASY Configuration:

- Probe: EUmmW - SN9354 ; ConvF(1, 1, 1); Calibrated: 2017-05-08;
  - Modulation Compensation:
- Sensor-Surface: 0mm (Fix Surface), z = 10 mm
- Electronics: DAE4 Sn1517; Calibrated: 2017-05-24
- Phantom: Cover; Type: SPEAG Phantom Cover;
- cDASY6 5G Module V1.0.0. 12565;

**Distance-10mm/Measure Horn reference source (43.7x43.7):**

Resolution = 1.25 mm

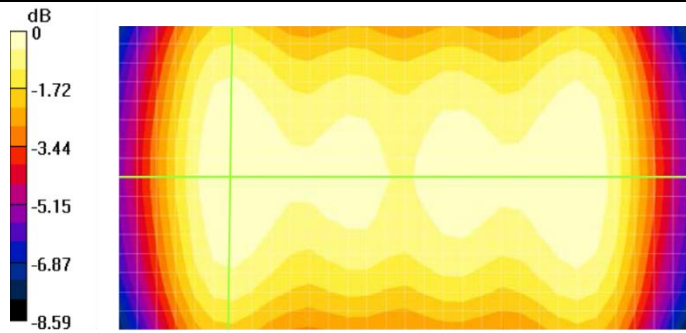
Maximum value measured: 52.3 V/m (RMS) for 5 dBm input power.



The plots below show the comparison between the calibration certificate and the system check results in terms of normalized E-field distribution and the 1D variation along the two axis of the maximum.

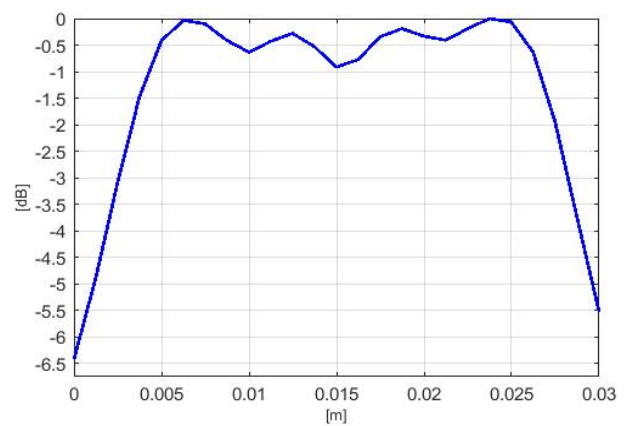
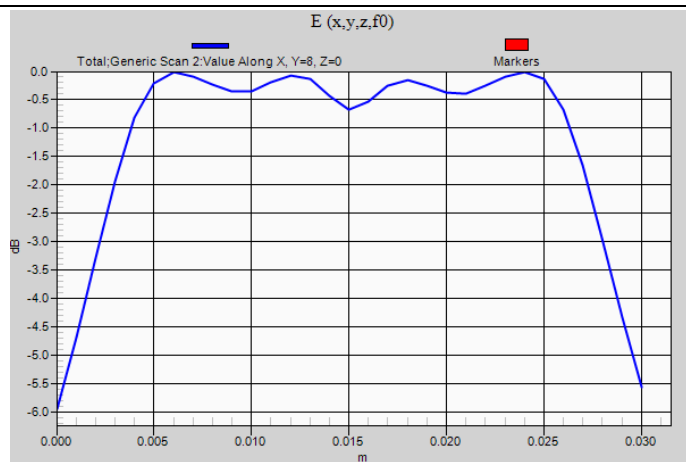
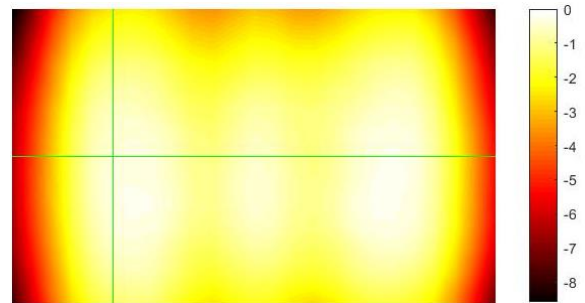
### Calibration Certificate

- scan area: 30 mm x 16 mm
- Resolution: 1 mm

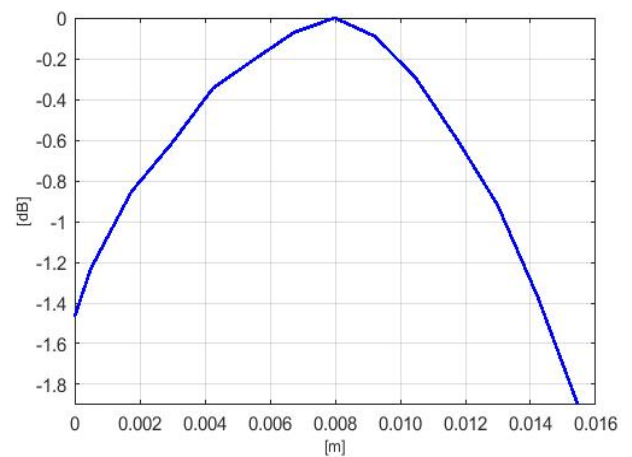
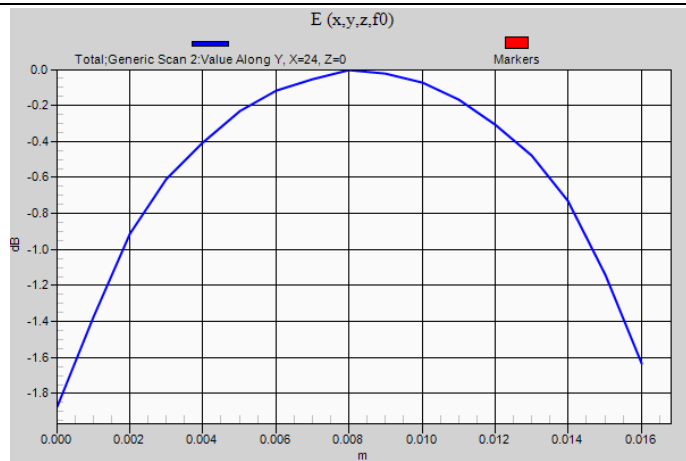


### System Check

- scan area: 30 mm x 16 mm
- Resolution: 1.25 mm



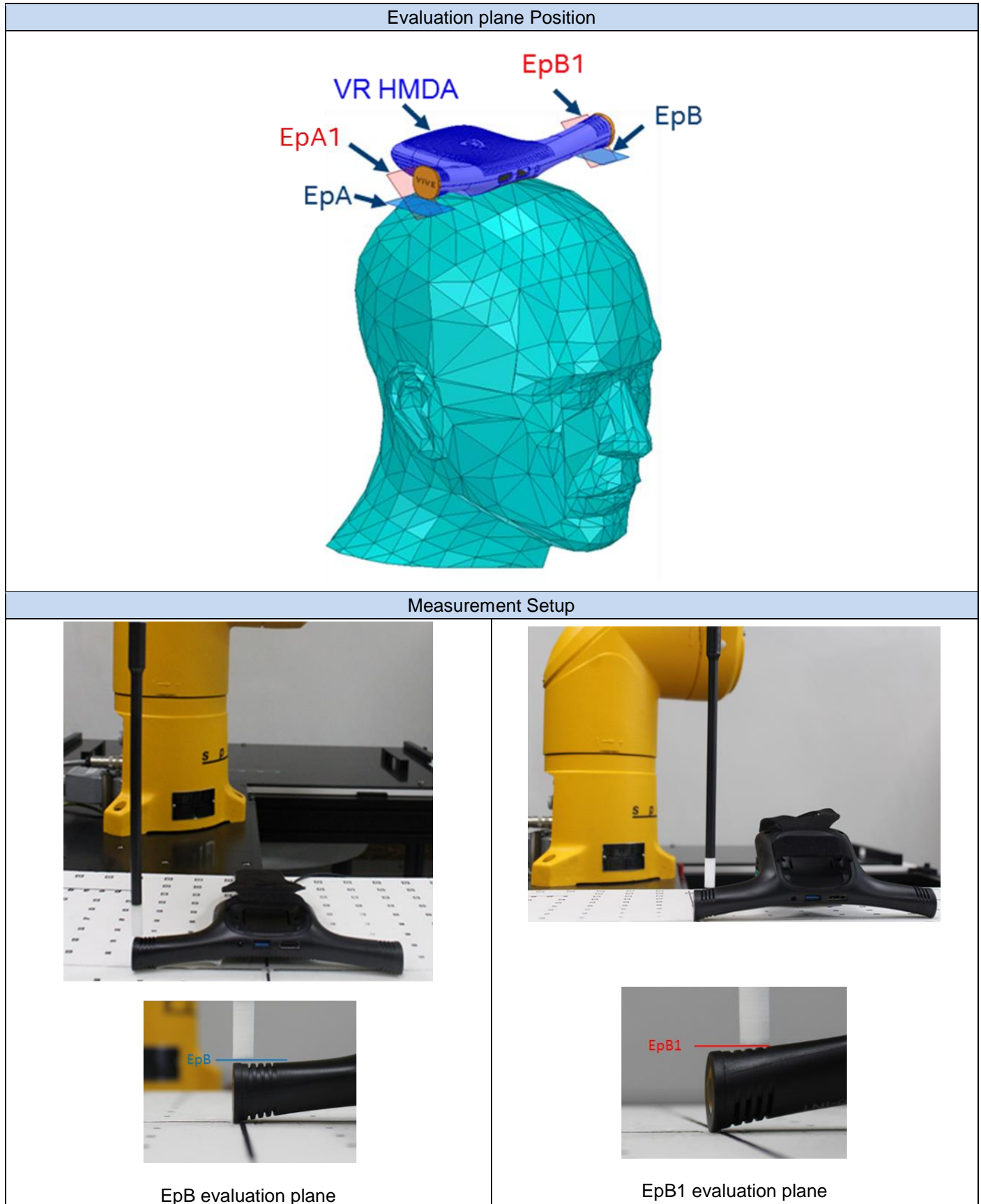
### Field variation through the maximum along the E-field polarization



### Field variation through the maximum along the H-field polarization

# Annex D. Photographs

## D.1 Test Setup



## D.2 Test Sample

### Sample #01

#### VR HMDA and Power Bank – Top view



#### VR HMDA - Bottom view



## Annex E. Calibration Certificates

---

ID	Device	Type/Model	Serial Number	Manufacturer
0575	E-field mm-Wave Probe	EUmmWV2	9354	SPEAG
0590	Horn reference source	PE9881-24	201715	Pasternack

**Calibration certificates are in attachment**