

**MEALSTREAM 402M 208 Volt 60Hz
FCC Approval**

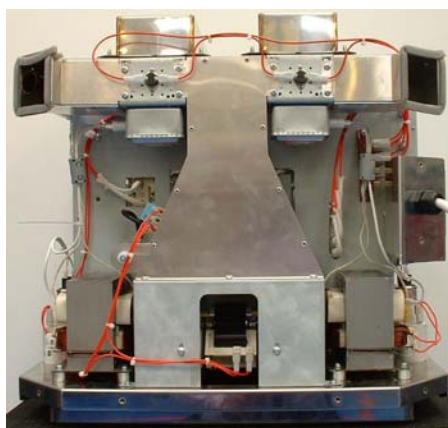
Internal Photos



Top View



LHS View



Rear View

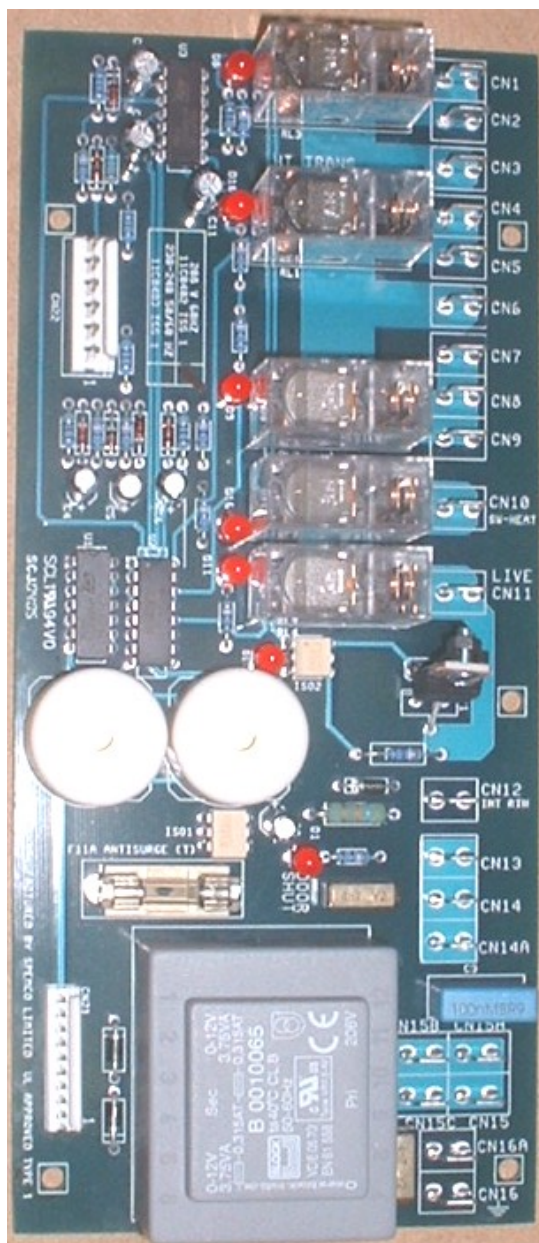


RHS View

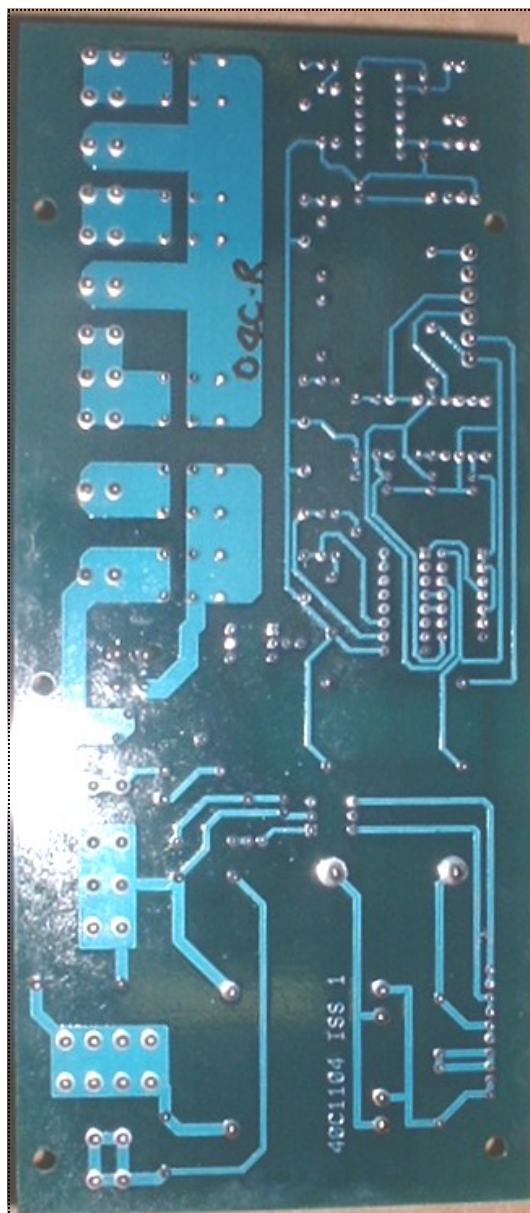
**MEALSTREAM 402M 208 Volt 60Hz
FCC Approval**

Internal Photos

Relay Board Component Side



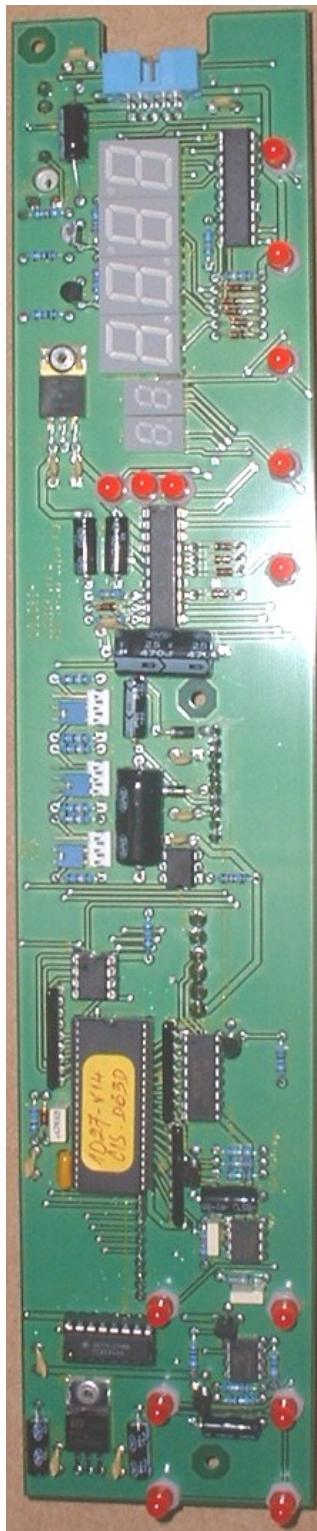
Relay Board Solder Side



**MEALSTREAM 402M 208 Volt 60Hz
FCC Approval**

Internal Photos

Logic Board Component Side



Logic Board Solder Side

