




Tested Model:


CONTROL BOX CB.13.42.02

Output: 29V  1.5A 52W
Prod.Date: 11/17 SW:V1.0
Serial-No.: CB134201X17Y15010001

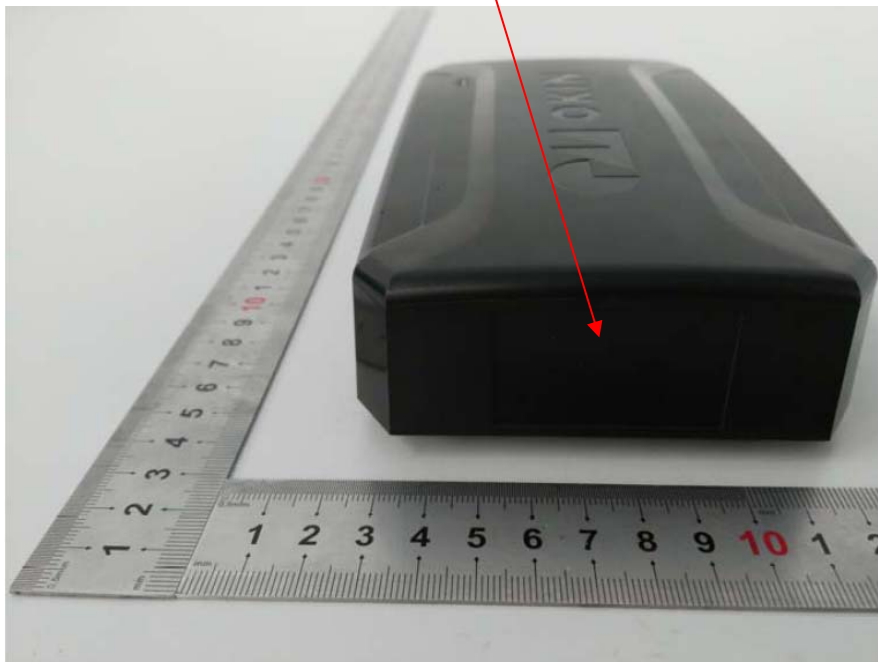


FCC ID:PCU-CB1342
IC:21319- CB1342

IP20 
Indoor use only



OKIN
A Phoenix Mecano Brand

For Patents contact www.dewertokin.de/patents




Series Model:

CONTROL BOX CB.13.42.01
Output: 29V \equiv 1.5A 52W
Prod.Date: 11/17 SW:V1.0
Serial-No.: CB134201X17Y15010001

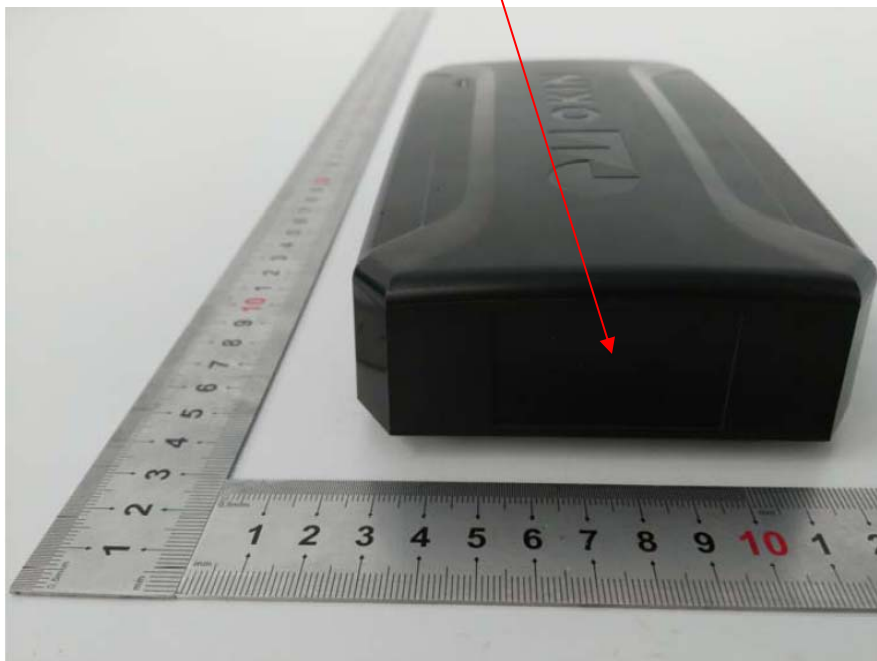


FCC ID:PCU-CB1342
IC:21319- CB1342

IP20 
Indoor use only

OKIN
A Phoenix Mecano Brand

For Patents contact www.dewertokin.de/patents



CONTROL BOX CB.13.42.03

Output: 29V \equiv 1.5A 52W

Prod.Date: 11/17 SW:V1.0

Serial-No.: CB134201X17Y15010001



FCC ID:PCU-CB1342

IC:21319- CB1342



A Phoenix Mecano Brand

For Patents contact www.dewertokin.de/patents



CONTROL BOX CB 13 42 04

Output: 29V  1.5A 52W

Prod.Date: 11/17 SW:V1.0

Serial-No.: CB134201X17Y15010001



FCC ID:PCU-CB1342
IC:21319- CB1342

IP20
Indoor use only



A Phoenix Mecano Brand

For Patents contact www.dewertokin.de/patents



CONTROL BOX CB.13.32.01

Output: 29V  1.5A 52W

Prod.Date: 11/17 SW:V1.0

Serial-No.: CB134201X17Y15010001



FCC ID:PCU-CB1342
IC:21319- CB1342

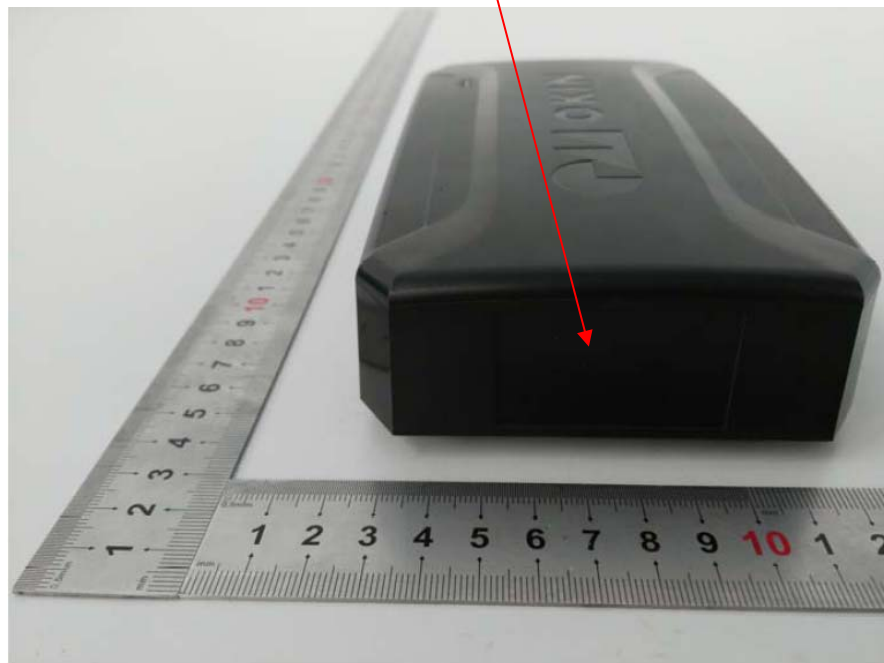


IP20
Indoor use only



A Phoenix Mecano Brand

For Patents contact www.dewertokin.de/patents



CONTROL BOX CB 13.32.02

Output: 29V  1.5A 52W

Prod.Date: 11/17 SW:V1.0

Serial-No.: CB134201X17Y15010001



FCC ID:PCU-CB1342
IC:21319- CB1342

IP20
Indoor use only



A Phoenix Mecano Brand

For Patents contact www.dewertokin.de/patents



CONTROL BOX CB.13.32.03

Output: 29V  1.5A 52W
Prod.Date: 11/17 SW:V1.0
Serial-No.: CB134201X17Y15010001



FCC ID:PCU-CB1342
IC:21319- CB1342

IP20 
Indoor use only


OKIN
A Phoenix Mecano Brand

For Patents contact www.dewertokin.de/patents

