

APPENDIX H
: USER'S MANUAL



Owner's Manual DAH-510



HW Hyun Won Inc.

Phone : 82-54-338-6000
Facsimile : 82-54-337-3075
Homepage : <http://www.m-any.com>



e-mail : many@hyunwoninc.com
333-1 Shindae-Ri, Kumho-Eup, Youngcheon-City, KyoungBuk
770-803, South Korea


S/N : D01011010121


**Voice Recorder
& Music Encoder
Multi Format Digital Audio Player**


Safety Warning and Precaution

※ Please follow all warnings and safety precautions in this part to prevent any risk of electronic shock or property damage.



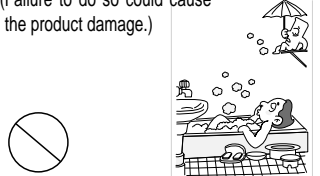
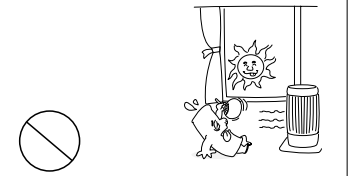

	Warning	This symbol indicates the possibility of the personal death or personal hazardous damage.
	Caution	This symbol indicates the possibility of the personal injury hazard or of the product damage.

 It indicates prohibition.

 It indicates 'Do not disassemble'.

 It indicates 'Do not touch'.

 It indicates 'Must follow'.

 Caution	
<p>Do not disassemble or modify. (It could cause malfunction.)</p> 	<p>Avoid dust or moisture. (Failure to do so could cause the product damage.)</p> 
<p>Keep the product out of direct sunlight.</p> 	<p>Never touch the product with wet hands. (When the product is charged, doing so may cause electric shock.)</p> 

Safety Instructions

►Warning

- To reduce danger of fire or electric shock, do not expose the product to rain or moisture.
- Transmit in any WMA or MP3 format music files without permission of the copyright owners is an infringement of copyright.
The software program loaded in the operating CD-ROM is approved for only the personal use.

►To keep the qualified function

- Do not use the product under the hazardous conditions, such as extremely high or low temperature area, dusty area, or excessive wet area.
- Do not place the product in the bathroom, near the heater, or in a car parked in the direct sunlight.
- Keep the batteries away from the metal objects, such as coins or keys when you carry them in your pocket.
The friction between the metal objects and the batteries could cause fire.
- Keep the product from being struck or crushed by the hard or sharp materials.
- We are not guarantee lost of data in player in case of customer's carelessness.
(Please do backup the important data)

►Avoid sudden shock

- Do not drop the product or keep it away from sudden shock or force.
If this rule is ignored, the product could be seriously damaged.

►Precautions on headphone use

- Listening to music in the high volume for long periods of time could cause hearing problems.
- Do not use headphones when driving a car or riding a bicycle or a motorcycle.
- Please use headphone or stop using unit on potential dangerous situation, Careful handling is also needed.
- The headphone which functioned as an ear must be attached to a long cord.
The cord must be left around back of a neck.

Contents

- 1 - Welcome to the Digital Audio World with Ultrasm
- 2 - What is a Digital Audio Player (MP3 Player) ?
- 3 - PC System Requirements and Accessory
- 4 - Product Specification
- 5- Installing Software(M-Any Manager)
- 7- How to connect Ultrasm to your PC
- 8 - How to use M-Any Manager
- 10- How to format the memories of built-in
- 12 -How to download files from your PC
- 14 - How to upload files from Ultrasm
- 15 - Troubleshooting Problems
- 17 - Getting started with Ultrasm
- 18 - Ultrasm LCD Display
- 19 - Repeat & Play Mode
- 20 - How to set User EQ Mode
- 21 - How to set EQ MODE and use Fast Searching
- 22 - How to erase files without software
- 23- How to record Voice and Music
- 25- How to use Removable battery compartment
- 26 - Handling and Storing Instructions
- 27 - Remote Controller Function
- 30 - LIABILITY FOR DAMAGES TO THE CUSTOMERS
- 31 - WARRANTY FORM
- 32 - MANUFACTURER INFORMATION
- 33 - FCC RF INTERFERENCE STATEMENT

Welcome to the Digital Audio World with Ultrasm

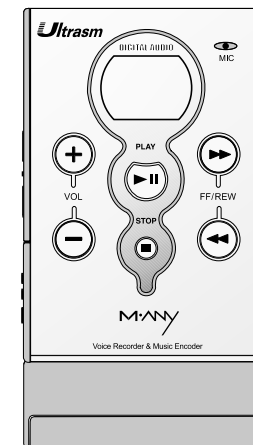
1

Congratulations on your purchase of the Ultrasm.

Ultrasm is a Digital Audio Player(more than MP3 player) with special additional functions of Voice Recorder & Direct Encoder(directly record a music from normal audio players through a encoding cable without computer).

The Ultrasm contains 64/96/128/256MB of on-board memory. The Ultrasm also is designed with a programmable and upgradeable Digital Signal Processor(DSP) to support MP3 files as well as new audio formats and digital rights management systems. Please check the Hyun Won website at www.m-any.com for the latest software upgrade.

You are now ready to enjoy the world of digital audio with the most versatile digital audio player on the market today.



What is a Digital Audio Player (MP3 Player) ?

2

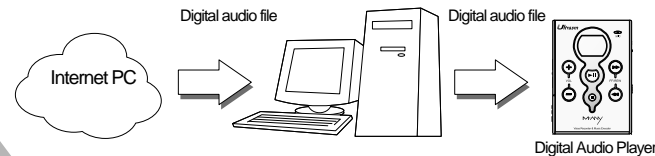
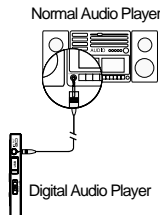
What is a Digital Audio Player (MP3 Player) ?

MP3 Player is a portable digital audio Player that plays MP3 files without requiring the use of tapes or CDs.

MP3 Player is a palm sized audio device that uses no moving parts for playback and lets you enjoy high quality sound that uses MPEG1 Layer 3 compression method for quality internet audio.

MP3 Player uses one or two flash memory cards, which are expandable to up to 256MB.

You can make your own CD quality MP3 files from CD or WAV making use of the MP3 encoder software or direct encoding system built in the device of Ultrasm.



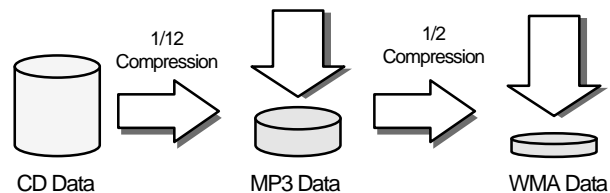
MP3 is a well known, high quality digital audio format. MP3 files can be compressed up to 12 times the original wave file size.

MP3 is one of Audio Formats and 'MPEG Audio Layer-3'.

MPEG(an expert group who researches for audio/video compression) is the acronym for Moving Picture Experts Group.

This group has developed compression systems used for video data. The MPEG compression system includes a subsystem to compress sound, called MPEG audio Layer-3. We know it by its abbreviation, MP3.

WMA(Windows Media Audio code) is the highest quality in terms of a sound and music. WMA provides all type of the best sounds from 8kHz to 48 kHz. WMA files can be compressed up to 50% the original MP3 file size and can sound as good as an MP3 file.



PC System Requirements and Accessory

3

● The following PC specifications are required for Ultrasm compatibility

Microsoft Windows98, ME, 2000 or XP Operating System

CD-ROM Drive with digital audio extraction support

Pentium (or compatible) 200MHz or higher processor

32MB RAM (64MB for Windows ME or 2000) or greater

128MB free Hard Disk Space (more for digital audio file storage)

USB port capability

● Ultrasm Accessory

A. Software CD



D. Line-in Cable
(Direct Encoding Cable)



G. USB Cable



J. Remote Controller



(Option)

B. Earphone



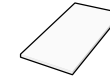
E. 1.2V Rechargeable
Ni-MH battery 1EA



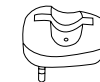
H. Carrying Case



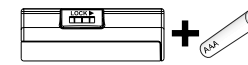
C. Owner's Manual



F. A/C Charger



I. Battery Pack+AAA
1.5V/battery 1EA



(Option)

Note

Accessories and optional items are subject to change. Please check www.m-any.com for the latest in Ultrasm accessories and software upgrades.

Product Specification

4

Model Name : Ultrasm
 Basic Function : Digital Audio File Playback, Voice Recording, Direct MP3
 Encoding
 Memory(On-board) : 64/96/128/256MB,
 Dimension (WxHxD) : 54x77x9.8mm
 Weight (except battery) : 55g
 Power Supply : 1.2V Rechargeable Ni-MH or Normal AAA 1EA
 Earphone Output : 7mW max
 s/n Ratio : 90dB
 Frequency Response: 20Hz ~ 20Khz
 PC Interface : USB Connection

Other features

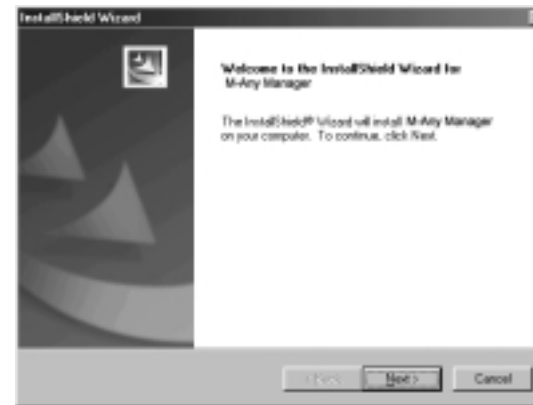
- Voice recording : 8hours & 40 minutes (128MB)
- Direct encoding : 2hours (128MB)
- Multi CODEC Support : MP3, WMA, ADPCM and other format by O/S
 upgrade
- High speed file transfer(USB Port) : Max. 2.5Mbps
- Play time : 8~10hours(Ni-MH 1EA + AAA 1EA)
- Firmware Upgrade Solution using TI chip
- EL LCD Solution
- Dual Power Supply : Rechargeable battery inside of the body and Removable
 AAA battery compartment

Installing Software(M-Any Manager)

5

In order for the Ultrasm and your PC to communicate and transfer digital files, you must first install the M-Any Manager by completing the following steps:

1. Insert the M-Any Manager CD into the CD-ROM drive.
 The following screen should display:

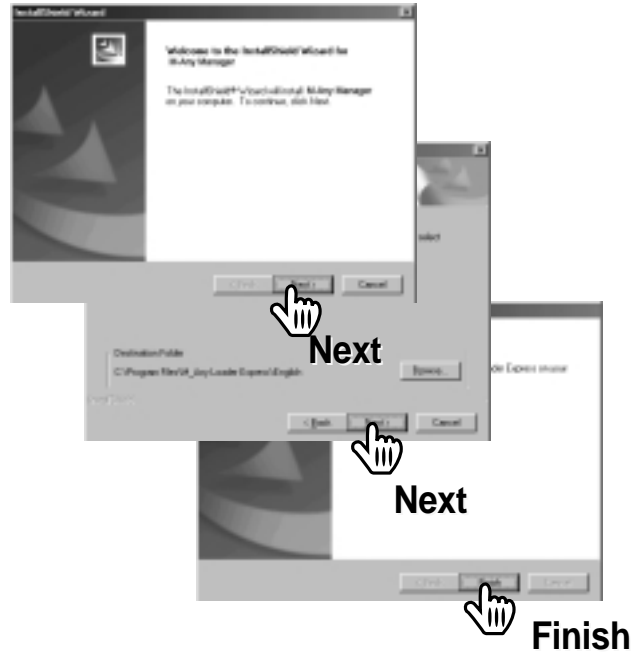


2. Follow the directions when the setup program is being automatically installed.
 If the program is not installed automatically, search for the install.exe file in the CD-ROM drive and double click on it.

Installing Software(M-Any Manager)

6

3. Please click the icon indicated by arrow on each screen then you complete the installation process.



4. When the installation is completed, the icon, 'M-Any Manager' will show up on the background screen.



Note

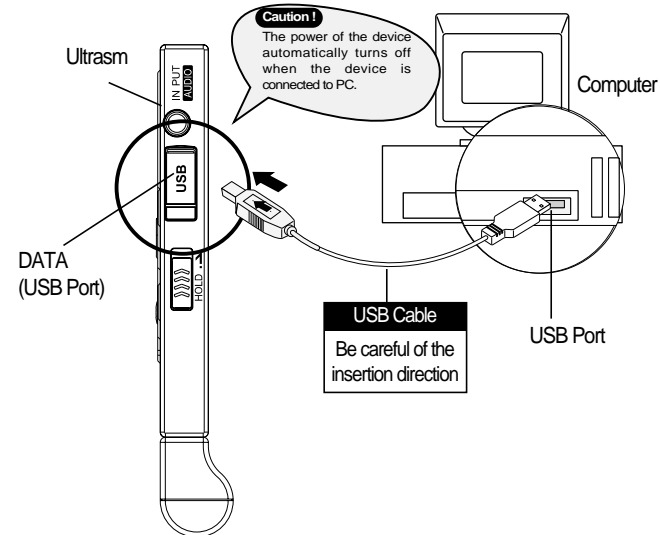
If a rebooting message displays during setup, install again after rebooting the computer.

How to connect Ultrasm to your PC

7

Please make sure that you finished installation process and device selection before connecting the USB cable.

To make the Ultrasm and your PC share Audio Files(Up & Down Load), connect Ultrasm with the USB cable which is supplied in the accessories, as following picture



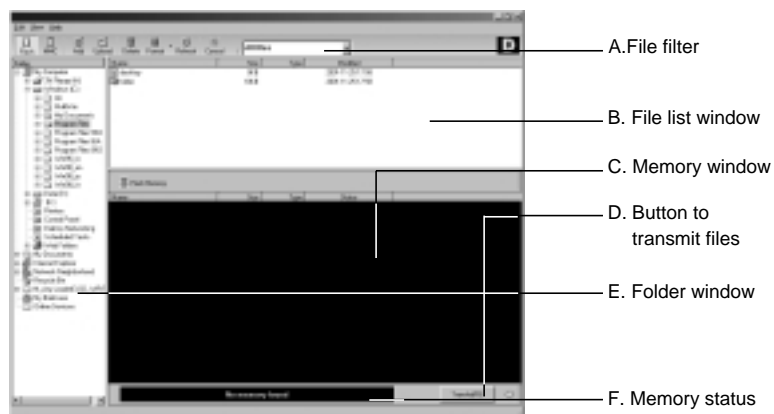
Note

USB means Universal Serial Bus connecting a device(hardware) to a PC.

How to use M-Any Manager

8

- Start the manager of 'M-Any Manager' by double clicking on shortcut icon on the background screen



A. File filter

Makes it possible to select files by type.

B. File list window

This window enables the selective downloading of files included in the given folder to the flash memory or MMC memory.

C. Memory window

This window shows the title, size, type of file and the downloading status of MMC memory card.

D. Button to Transmit Files

This button is for transmitting selected music files to the player.

E. Folder window

This window is for browsing the files in a certain folder to easily select music files. If files are selected, they will show up in the file list window.

F. Memory status

This shows the remaining memory, the entire memory and the connection status of memory. In the following cases, a message 'No Memory Found' will appear. When having selected MMC memory when the memory card is not put into the player.

How to use M-Any Manager

9

G. Functional Icon



Selects the basic(flash) memory.



Adds selected files to the selected memory card. The selected files will appear "ADD" in the memory window.



Uploading selected files to the selected PC folder.



Deletes the selected files from the memory.



Formats the memory card. In this card, all selected files in the memory card are deleted.



The selected memory is refreshed.

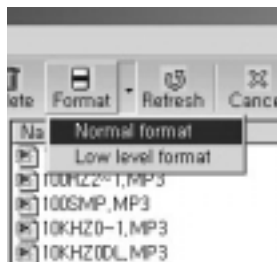


The transmission of file between the product and PC

How to format the memories of built-in and MMC

10

- When wishing to format the memory card or to erase all files in the memory card, clicking on 'Format' button will initialize the memory card. However, if formatting the memory card, all settings including 'play back position' will be also initialized.

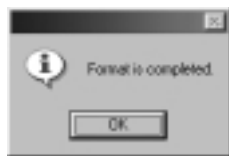


1 Run M-Any Manager and connect the communication cable to the digital audio player and then select the memory card to format.

2 Select the type of formatting and click the mouse and then the confirmation dialog box for formatting will appear.



3 Press 'Yes' button and the formatting will be executed. When the formatting is completed, the dialog box for confirming the formatting will show up.



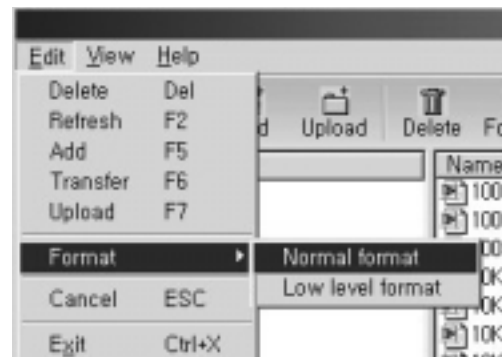
4 Pressing 'OK' button will complete the format.

How to format the memories of built-in

11

- You can also format the memories using edit menu button, as under

Normal format / Low level format



- **Normal format** : Deletes only the information saved in the memory card of the audio player and the deletion is quickly done.
- **Low level format** : Like formatting the entire floppy disk, the entire memory card is initialized and so it takes some time.

Note

Once formatting begins, do not stop the process. Removing the communication cable to stop the process by force can give some error to the operation of the digital audio player.

How to download files from your PC

12

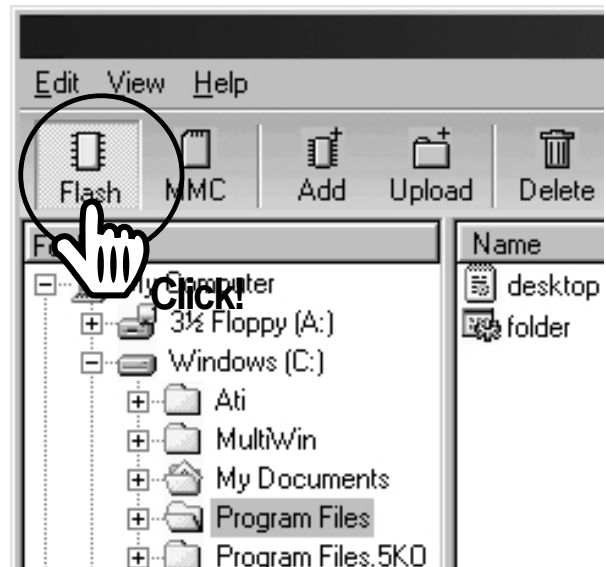
- When downloading the desired files from PC to Ultrasm, follow next steps ;

1 Buy the MP3 files or any available audio files that you want from DC communications or internet sites and save them on your PC.

2 Run the "M-Any Manager" by clicking shortcut icon on the background.

3 Connect Ultrasm to your PC using USB cable.

4 Select a memory on the menu bar which the desired files are to be downloaded to.



How to download files from your PC

13

- 5** Select a folder where the files to be downloaded are saved so that the files are displayed on the file list window. Then select the desired files. Click "ADD" icon on the menu bar to display the files on the memory contents window as "ready to transfer".



- 6** Press 'Transfer' (F6) in the bottom and the selected files will be downloaded.



Note

Files can be downloaded by using Drag & Drop.

How to upload files from Ultrasm

14

- To upload the Audio files or data files from Ultrasm to your PC, carry out the following descriptions.

Note : M-Any Manager does NOT upload music files (MP3 and WMA) to your PC because it could infringe a copyright.

To upload files

- Select a directory or folder on the PC Directory display panel.
(The files of the selected directory or folder will be displayed on the PC Files display panel)
- Select files in the file list of Memory Window and click upload button. Then, the selected file(s) will be up-loaded into the selected directory or folder of your PC.



Note

You can upload files by Drag & Drop as well.

When up/downloading files to or from the digital audio player,

Files other than digital audio files can be uploaded or downloaded.

Uploading/downloading is possible when batteries are not in the digital audio player,

Files cannot be played on the digital audio player during communication.

Noise can be heard through an earphone during communication.

Other USB communication cables than the provided USB cable should not be used.

Troubleshooting Problems

15

If you face with the following problems, you can fix them referring under articles ;

1. Ultrasm will not download digital files from the PC.
 - Check the cable connection to the USB port.
2. Ultrasm will not play.
 - Verify that the battery has been inserted correctly.
 - Check battery discharge status.
 - Verify that the MMC card is inserted properly, if applicable.
3. The M-Any Manager does NOT recognize the hardware connection.
 - Check the cable connection to the USB port.
 - You may need to re-install the software. If "No memory found" is shown again;
 - Connect the USB cable to another USB port.
 - Check if there is "USB Flash Memory Controller Driver" in My computer ➡ Control Panel ➡ System ➡ Device Manager.
4. If there is "!(or?) USB Driver" or "!(or?) Untitled Device", USB driver was not installed correctly or is not properly recognized. In this case it is necessary to re-install the USB driver.
 - To install of USB drivers, please refer to "The inability to get access to Memory" in Help menu of program.
 - If there are no contents related to USB in My computer ➡ Control Pane ➡ System ➡ Device Manager,
 - you may have to check if your computer is compatible with USB driver.

Troubleshooting Problems

16

- Check if there is conflict between hardware in My computer ➡ Control panel ➡ System ➡ Device Manager.
(Hardware conflicted with other hardware shows "!" or "?" mark in front of the device name.)
 - If you can find conflict between hardware, delete the conflicted hardware and reboot computer.
 - Please visit the Hyun Won website at www.m-any.com for the latest updates and software upgrades for the Ultrasm.
5. Installing the USB Driver manually
- If a USB driver to control Ultrasm already exists in PC, there is no need to install a new driver.
 - Insert Software CD into CD-ROM Drive (Do not execute the installation program.)
Connect the Ultrasm Player to PC with USB cable.
(If there is no USB driver to communicate between the Ultrasm and the PC, the "New Hardware Wizard" will appear on the screen.)
 - Proceed the installation following the on-screen instructions.
 - When the location of the drive is asked, select the folder of your CD-ROM.
(When the installation finishes once, The New Hardware Wizard will appear on screen again.)
 - Follow the on-screen instructions to complete the installation of the USB driver.

Important Note

When connecting the cable with Ultrasm, ensure the correct orientation of the connector end, and do not force the connector. Improper connection with the USB cable can cause damage to the computer and/or the Ultrasm.

Getting started with Ultrasm

17

- Complete the following steps to get started with your Ultrasm
 1. Make sure the battery is fully charged and insert it into your Ultrasm.
 2. Connect the USB cable to the Ultrasm and the PC USB port.
 3. Using the software, download music to your computer from the Internet or convert it from an existing CD.
Then, download audio files to your Ultrasm.
 4. Disconnect the Ultrasm from the USB cable and power on Ultrasm by pressing the "play button" for 2 seconds.
 5. Press play button again. Now you can enjoy digital audio from your Ultrasm with earphone.
- Ultrasm additional Function.
 - 1) If the player senses it is not used for 5minutes, it will automatically enter Power Save mode.
 - 2) The Ultrasm will play first song when the power is on from power saving mode.
※The Ultrasm will resume play from the exact point in the audio track that was playing when the power is on from power off.

Caution

- Connect earphone jack into Ultrasm completely.
- If you can't listen music when power is on after separating USB cable, please press Play again after uncovering the battery pack for a while and cover that.
It makes DSP booted again and it plays properly.
- Please don't use Ultrasm with another USB device such as digital camera and scanner to avoid software's communication error.
- Please check our web-site to see more information.(<http://www.m-any.com>)

Ultrasm LCD Display

18



- a. Title of a song
- b. File type
- c. Current mode (Play ► or Pause ||)
- d. EQ type
- e. Playing time
- f. Volume level
- g. Track No.
- h. Hold status
- i. Normal Mode : play all titles and stop
(◁) Repeat 1: repeat play of current title
(↺) Repeat All : repeat play of all titles in order
(◁ blinking) Random : one time play of all titles in random
(↺ blinking) Random All : repeat play of all titles in random
- j. Voice & Music recoding status
- k. Battery status

Repeat & Play Mode

19

● Repeat Mode

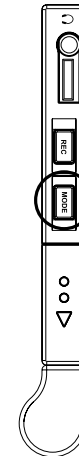
- 1) When music play, press the mode button for 2 seconds, LCD will show Repeat Mode.
- 2) Press the mode button shortly again. LCD will show Repeat A-
- 3) Press the mode button again to set the B. So you will listen between A and B repeatedly.
If you don't set the B, Ultra Slim will set the B in the end of songs.
- 4) If you press FF/REW or STOP, Repeat Mode will be canceled

● Play Mode

Press the mode button to change play mode.

The mode will be changed to NORMAL ➔ REPEAT 1 ➔ REPEAT ALL ➔ RANDOM ➔ RANDOM ALL ➔ NORMAL in order by pressing mode button shortly.

After 1 second in selected mode, name of mode will disappear. It means mode sets.

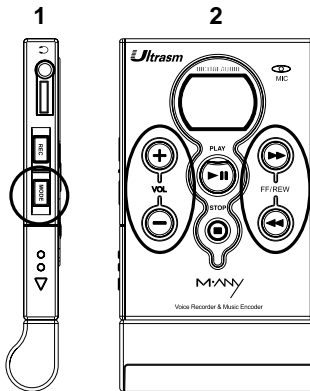


How to set User EQ Mode

20

● User EQ Mode

1. It works only in playing mode.
Press the mode button for 2 seconds to go the Repeat Mode and press the button long once again. LCD will show User EQ setting screen.
2. You can set User EQ with the buttons of REW/FF, VOL. UP/DOWN.
3. If you press stop button to cancel the mode, It will show the title of a song and if you press the mode button long enough, it goes to Repeat Mode and you can set the Repeat Mode A-B.
4. How to control User EQ
If you press Mode Button long enough in User EQ condition, you will see 5 bars on LCD screen.
At this moment the highest one of first bar is twinkling(stand by for Band 1 setting)
Have a choice of band by pressing FF/REW.
You can control band by Vol +/- (-15 ~ +15 : 31 Steps)
After operating, you can stop User EQ Mode by pressing stop button.

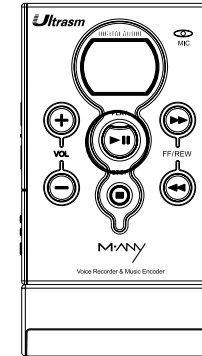


How to set EQ MODE and use Fast Searching

21

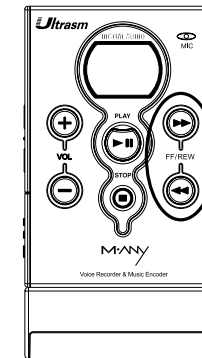
● EQ MODE

- 1) You can set this mode only in playing mode.
If you press Play Button long enough in Playing mode, EQ setting will be changed in order.
- 2) It goes in this turn. LIVE → DANCE → JAZZ → LATIN → ROCK → USER → LIVE(Default is Live)



● Fast Searching

- 1) When you're playing a music, press the FF/REW BUTTON long enough to make it do FF/REW SEARCHING 4 times faster.
- 2) After the end of the song, FF FAST SEARCHING will work by the RANDOM REPEAT MODE. ON REW FAST SEARCHING it plays again on first part of song.

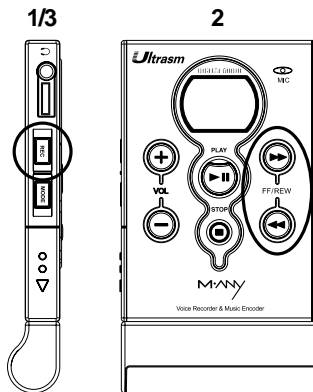


How to erase files without software

22

● Erase Mode

- 1) You should start at the stop mode.
- 2) Press the Rec Button long enough three times to go to Erase Mode.
Then press the Rec Button shortly, it will display the title of song which will be erased.
- 3) And you can choose the song that you want to erase by FF/REW Button.
And then if you press Rec Button 'Erase? Yes:Rec No:Others' will be displayed .
- If you press Rec Button shortly 'Erasing' will be displayed and the file of the song will be erased.
- If you press other buttons except Rec Button, Erase Cancel will be displayed and it means Erase is canceled.



Erase Function

This function makes it possible to erase a file without connecting to M-Any Manager.

How to record Voice and Music

23

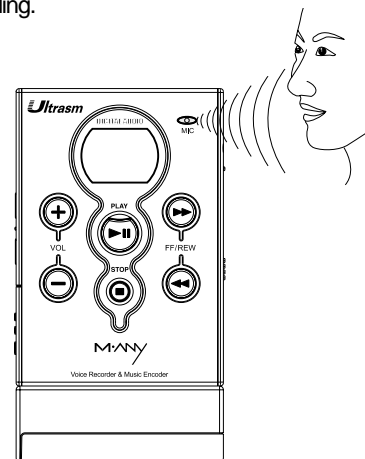
● Record MODE

- 1) You should start at the stop mode.
- 2) If you press the Rec Button long enough LCD screen will show VOICE RECORD press it long again and It displays "MUSIC RECORD" → "ERASE MODE" → "VOICE RECORD" in order.

● Record Voice

- 1) You should start at the stop mode.
- 2) Press the Rec Button long enough to go to Voice Record Mode.
- 3) Press the Rec Button shortly and Voice Recording starts. (You can find Recording Icon and LCD display "Recording...")
- 4) Press Stop Button to stop recording.(loop back applied)
- 5) Press Play Button to play the recorded file and it will be displayed as V001,V002,V003...

And then press again the Rec Button long enough to go to Music Record Mode. Now press the Rec Button shortly to start music recording.

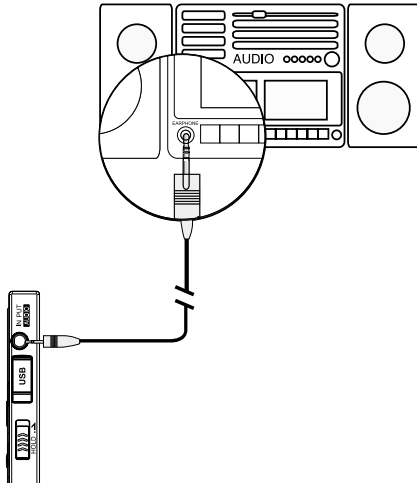


How to record Voice and Music

24

Record Music (Direct Encoding)

- 1) Put an end of "line in cable" into the earphone jack of the normal audio player and the other one of "line in cable" into the "in put jack" of the Ultrasm.
- 2) Press Rec Button long enough twice to go to Music Record Mode.
- 3) Press again the Rec Button again to start recording music, This is called "Direct Encoding".
(LCD screen shows recording icon turns on, it displays "Recording..")
- 4) Press Stop button to stop recording (loop back applied)
- 5) Press Play Button to start the recorded file and the file will be displayed as E001, E002, E003



What is loop back?

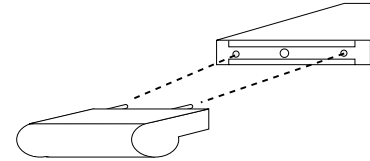
We can listen to the recording music while we are recording the music by this function. (The quality of sound might be a little bit noisy even though the quality of song which is recorded is good.)

How to use Removable battery compartment

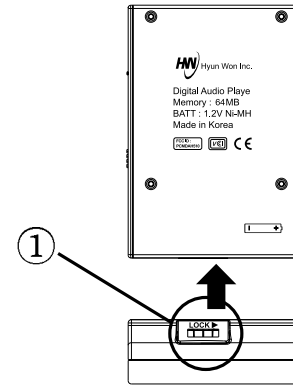
25

This is how to use removable battery compartment.

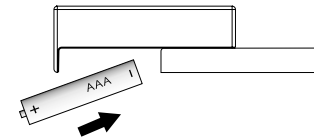
- 1) Put the pack properly on bottom of the player.



- 2) Screw a bolt (1) into a tie.



- 3) Uncover the battery pack and put the battery properly into it.



Handling and Storing Instructions

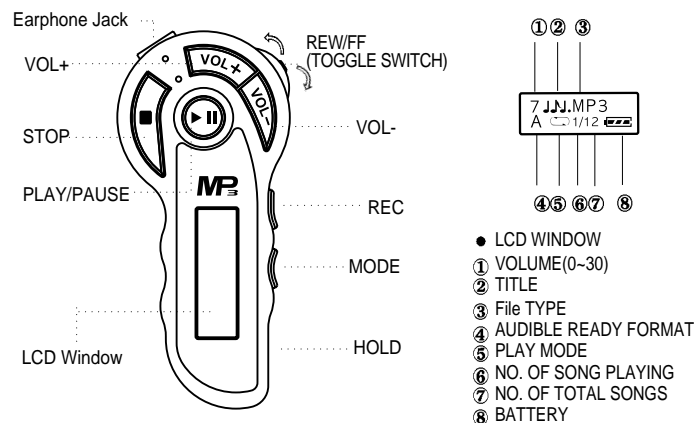
26

This is the way to use Ultra Slim with your care.

- Unit may be damaged if stuck or crushed.
- Use a carrying case when carrying and using your Ultrasm.
- Keep out of direct sunlight.
- Keep away from dust and dirt.
- Clean with a dry, soft cloth.
- Store in a cool dry place.
- Do not store your Ultrasm around a television set due to the magnetic field interference that may result with TV.
- Do use only USB cable which is included in the product box.
- Do not expose the Ultrasm to extreme temperatures, such as leaving it in a car in hot weather.

Remote Controller Function

27



PLAY Button

Press PLAY button for play music and will display file name on the LCD.

Press PLAY button while play mode pause music and will display "Pause■■" on the LCD.

Press Play button for two seconds while contents is playing to scroll through a list of Equalizer options (LIVE, DANCE, JAZZ, LATIN, ROCK, USER EQ)

STOP Button

Press the STOP button to stop music

Power Off : Press the STOP button for "two" seconds to turn off player

FF/REW Button

Move the toggle switch to the FF or REW position and hold for at least 2 seconds. Contents will FF or REW at 4x regular speed until you release the switch.

The content will REW/FF until the beginning/end of the file is reached at the beginning/end of the file, the function will stop and the content will begin playing at the beginning of the file/ next track The LCD timer will display your progress as you REW/FF through a track.

Remote Controller Function

28

Next / Previous Track

Quickly move and release the TOGGLE SWITCH to the FF or REW position content will skip to the next track.

This function can be preformed while in Play or Stop mode.

Track numbers will change on the display while performing this function.

Volume + / Volume -

Press the Vol +/ Vol- button to increase/decrease the volume

Volume is increased/decreased one step at a time.

There are 0-30 levels for the volume

This function can be preformed in Play, Stop, and pause mode.

Mode Button

Press the MODE button to scroll through a list of Play options.

Normal, Repeat, Repeat All, Random, Random all

Press the mode button for "two" seconds to scroll through a list of Equalizer options (Live, Rock, Latin, Jazz, and User EQ).

Section Repeat

1. Press the MODE button for "two" second while song is playing, "REPEAT MODE" will display on the LCD.

2. Press the MODE one more time, "Repeat A-", and press the MODE button one more time "Repeat A-B" will display on the LCD and automatically selected section A-B will be played repeatedly.

3. To cancel this section repeat, press the REW/FF toggle switch once quickly "NOTE: this function is to hear a certain section of a file repeatedly"

User EQ Settings

Press the REC button for "two" seconds in STOP mode "four" times (or in Play mode "one" time), User EQ will display on the LCD.

Press the REC button once quickly, Bass 1 will display on the LCD with a set value. Set the Value (-15 ~ +15 in each Bass) with the Vol+ / Vol- buttons.

Move to Bass 2, Bass 3, Bass 4, and Bass 5 by moving the REW/FF toggle switch.

Remote Controller Function

29

REC Button

Voice Recording

1. Press the REC button for "two" seconds, "VOICE-REC" will display on LCD.

(Must be in STOP mode for recording.)

2. Press the REC button again, shortly "Rec Start" and "V001.ADP, V002.ADP, ..." will display in the LCD, you can begin speaking/recording.

3. Press the STOP button to end recording

Music Recording

1. Press the REC button twice for "two" seconds, "MUSIC-REC" will display on LCD. (Must be in STOP mode for recording.)

2. Press the REC button again, shortly "Rec Start" and "E001.MPE, E002.MPE, ..." will display in the LCD, you can begin speaking/recording.

3. Press the STOP button to end recording

File Erase

1. Choose file to erase in Stop mode, then Press the REC button for "two" seconds, "three" times, "Erase Mode" will display on the LCD.

2. Press the REC button will show file name on the LCD, then Select the file you wish to Erase by searching with REW/FF button.

3. Press the REC button once quickly, "YES-REC" will display on the LCD

4. Press the REC button once quickly again, the selected file will be erased and "Erasing" will display on the LCD.

Playing Time

Press REC button while content is playing, length of music will display on the LCD.

Hold

1. Slide the HOLD button to the right, a Key will display on the LCD - this will lock all of the buttons from functioning.

2. Slide the HOLD button to the Left and the Key will disappear from the LCD - All the buttons will function again.

LIABILITY FOR DAMAGES TO THE CUSTOMERS

30

Description of Damages		Action to be taken	
		During the warranty period	After the warranty Period expires
Defects in materials and workmanship occurring under normal use (within the retention period of parts)	A defect or defects requiring important repair within ten(10) days from the date of purchase.	Replacement or refund of the purchase price	Repair at charge
	A defect or defects requiring repair of any important part or parts within one(1) month from the date of purchase.	Replacement	
	A replaced product requiring important repair again within one(1) months from the date of purchase.	Refund of the purchase price	
	in case that it is impossible to replace the product.		
	Repairable	In case that a defect occurred	Repair at no charge
		In case that the same defect has occurred four times after being repaired.	Refund of the amount of the product appraised on the basis of straight-line method of depreciation plus ten(10) percent.
		in case that it is impossible to repair the product.	
		in case that it is impossible to repair the product because of no parts available for repair.	
		in case that the company has lost the Product returned for repair by the customer.	
	Damages caused during shipment or installation of the product.	Replacement	
Defects resulting from the customer's faults	in case that it is possible to repair the product.	Repair at charge	Repair at charge
	in case that it is impossible to repair the product.	Replacement after receiving the payment of fees equal to the amount that are to be charged in case of repair at charge	
	<ul style="list-style-type: none"> ■ If a defect resulted from acts of Gods, including but not limited to fire, salt damage, earthquake, storm and flood. ■ If a defect resulted from the use of abnormal power or defective connecting devices. ■ If consumable parts are to be replaced with new ones. ■ If a defect resulted from any cause other than those not ascribed to the product. ■ If a defect resulted from any repair or modification done by any persons other than authorized engineers at Hyun Won's agents or service center. 	Repair at charge	

■ This liability is one of the standards recommended by a manufacturer and could be various depending on the market environments of each country.

WARRANTY FORM

31

WARRANTY FORM

One-year warranty

Product Name :

Model Name :

Date of Purchase : (date) (month) (year)

Customer's Name : Phone :

Address :

Agent's Name : Phone :

Address :

 Hyun Won Inc.

- This Warranty Form with the date of purchase must be presented for warranty service. Please keep this warranty form well.

1. This product shall be entitled to warranty service as specified in the warranty form.
2. As the warranty period begins on the date of purchase, please ask the agent to enter the date of purchase in the warranty form when you purchased the product.
(In case that it is impossible to confirm the date of purchase, the warranty period shall be considered to begin after six months from the date of manufacture.)
3. This warranty form shall not be reissued.

The specifications of the product are subject to changes without notice for the purpose of quality improvement.

MANUFACTURER INFORMATION

32

If you need more information or have any questions, please feel free to contact us at:



Hyun Won Inc.'s Customer Service Center

Phone : 82-54-338-6000

Fax : 82-54-337-3075

Homepage : <http://www.m-any.com>

e-mail : many@hyunwoninc.com

333-1 Shindae-Ri, Kumho-Eup, Youngcheon-City, KyoungBuk
770-803, South Korea

FCC ID :
PCMDAH510



FCC RF

INTERFERENCE STATEMENT

33

NOTE:

This equipment has been tested and found to comply with the limits for a Class B digital device, pursuant to Part 15 of the FCC Rules. These limits are designed to provide reasonable protection against harmful interference in a residential installation. This equipment generates, uses and can radiate radio frequency energy and, if not installed and used in accordance with the instructions, may cause harmful interference to radio communications. However, there is no guarantee that interference will not occur in a particular installation.

If this equipment does cause harmful interference to radio or television reception, which can be determined by turning the equipment off and on, the user is encouraged to try to correct the interference by one or more of the following measures.

- Reorient or relocate the receiving antenna.
- Increase the separation between the equipment and receiver.
- Connect the equipment into an outlet on a circuit different from that to which the receiver is connected.
- Consult the dealer or an experienced radio, TV technical for help.
- Only shielded interface cable should be used.

Finally, any changes or modifications to the equipment by the user not expressly approved by the grantee or manufacturer could void the users authority to operate such equipment.

THIS DEVICE COMPLIES WITH PART 15 OF THE FCC RULES. OPERATION IS SUBJECT TO THE FOLLOWING TWO CONDITIONS: (1) THIS DEVICE MAY NOT CAUSE HARMFUL INTERFERENCE, AND (2) THIS DEVICE MUST ACCEPT ANY INTERFERENCE RECEIVED INCLUDING INTERFERENCE THAT MAY CAUSE UNDESIRE OPERATION.