

mosiBLU

P/N : M1000-031118

mosiBLU

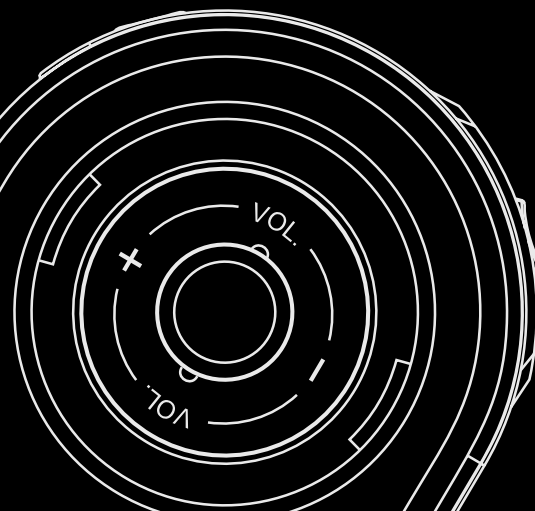
User Manual

www.mobiblu.com

HW Hyun Won Inc

4th Floor, e-Venture Building
74-2, Shincheon 3-dong, Dong-gu
Daegu City, South Korea
Tel : 82-53-743-7200
Fax : 82-53-743-2112
call@hyunwoninc.com

mosiBLU



DAH-1300

Digital Audio Player(MP3+WMA)

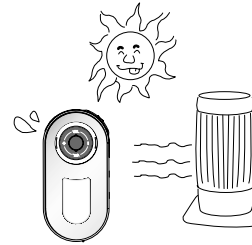
Voice Recorder

FM Radio

Negative Graphic LCD

Safety Warnings and Cautions

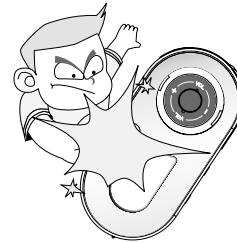
* Please be aware of these safety instructions and use the product properly in order to prevent risks of injury or damages.



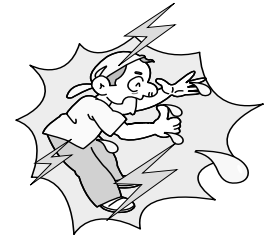
Avoid exposing the product to direct sunlight (High temperatures applied to the product may cause damage.)



Avoid placing the product under high moisture or dust level (It cause damage to the product.)



Avoid dropping or causing impact the product. (It may cause serious damage to the product.)

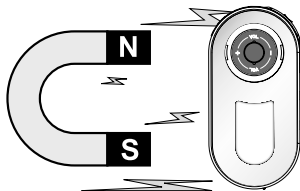


Do not touch or connect the product with wet hands or if you are in contact with water.. (This may cause electric shocks when the power is connected.)

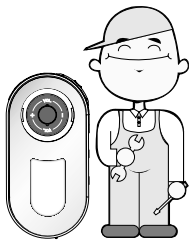
Safety Warnings and Cautions



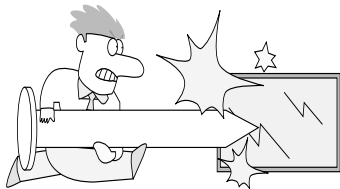
Do not use any chemical or detergent for cleaning the products as it may discolour or strip the product surface.



Keep the product away from areas where extreme vibrations or magnets exist.



Never disassemble, repair or rebuild. Contact the support department if there are faults with the product.



Do not press on the LCD panel with any sharp objects. (This may scratch or damage the product and may void the product warranty)

Special Features of the Product



Polished Simple Design



The World Best Multi-Codec Player



Quality enhancements have been made including an upgraded Graphic LCD with Negative Graphic display.



Mass Storage: You don't need the software CD anymore. Take the convenience of direct recognition by the PC using Mass Storage function by connecting only.



Firmware Upgrade: Enjoy the advantage of advanced product with the firmware upgrade function.



FM Radio: You can also listen to the FM radio anywhere in the world. Functions include auto-search and user defined pre-set frequencies.



Preset EQ & User EQ 1.2: Feel the differences using the five stages of preset sound qualities and two user-defined sound qualities: Normal → Rock → Jazz → Classic → Pop → User EQ1 → User EQ2



Use the convenient study-support function of the product with the advanced Linguistic-Repeat system.

Contents



My Multiformat Digital Audio Player	1
What is a Digital Audio Player?	2
Product Specifications	3
PC System Requirements and Accessories	4
Hardware Descriptions	5
About Power Supply	6
Software Installation	8
Connecting the Player to a PC using a USB Cable	11
Separating the USB cable from the Player	12
File Download/Upload	14
OS Update & Format	17
LCD DISPLAY Illustration	21
Power On /OFF	22
Music Listening	23
Volume Control	24
Music Selection	25
HOLD (Lock Function)	27
MODE Changing	28
Voice Recording	30
FM RADIO MODE	33
Searching FM Frequencies	34
Storing the Selected Frequency	35
MENU Setting(Setting, Display, Timer, Play Mode, EQ, Erase, About)	38
Setting for Ranged Repeat	49
It May Not be a Trouble!	51
Warranty Services	52
FCC RF INTERFERENCE STATEMENT	53
WARRANTY FORM	

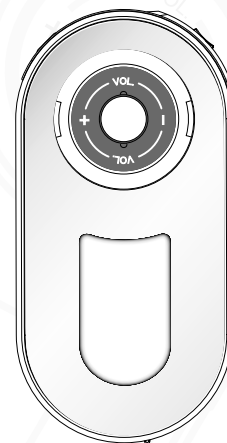
My Multiformat Digital Audio Player



Thank you for purchasing our portable digital audio player.

The product is a Multi Purpose Digital Audio Player that is easy to use and stylish in design and is complemented by a built-in FM Radio and a voice recording function. The player is equipped with 'solid state' internal memory and a display system with negative graphic LCD for even better on screen clarity. Benefiting from Plug & Play technology installation CD's are not required for most PC Users*, combined with this the unit can also be used as a mass storage device for all those 'important or not so important' files. (*Provided drivers will be required for Win98/SE users, also all users will need to use CD for future OS updates.)

Now we invite you to the new Digital Audio World!

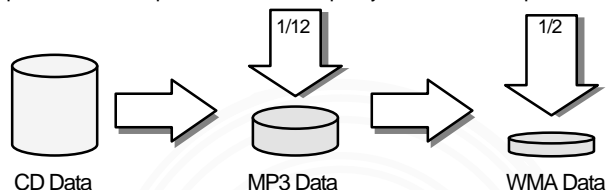


What is a Digital Audio Player?



What is a MP3 file?

MP3 stands for MPEG1-Layer3 and it uses a compression technology that converts conventional CD music data into an MP3 file format that is used on a PC, at 1/12 compression ratio. It provides near CD-quality music at 128kbps.



What is a WMA file?

It is a multimedia compression method from Microsoft. The technology specifically compresses music data from the window Media Technologies". As it provides sound quality equivalent to 128Kbps using only 64Kbps format, it takes only half as much space as MP3 file format for compressing music data.

What is a Portable Digital Audio Player?

It is a portable device that stores and plays digital audio files, which once were only playable on a PC.



Product Specifications



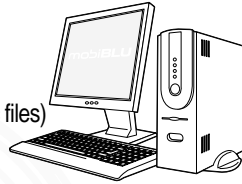
Category	Item	Specification
FM TUNER	FM Frequency Range	87.5MHz~108.0MHz
	Headphone output	Max. 10mW(16 Ω) at max. volume
	S/N	50 dB
	Antenna	Headphone/earphone cord antenna
Audio	Frequency Characteristics	20Hz ~ 20KHz
	Headphone output	Max. 10mW(16 Ω) at max. volume
	S/N	90 dB
File Support	File type	MP3, WMA, ADPCM
	Bit Rate	MP3: 8Kbps or higher WMA: 32Kbps or higher
USB	Download speed	4Mbps(USB Version 1.1)
Recording time		Voice recording 1040 min. (based on 256MB, when the recording MODE is 32kbps)
Max. play time		Approximately 12 hours (using 1 AAA alkaline)
Operating temp. range		-5°C~70°C
Dimensions(WxHxD)		80 × 40 × 17.2mm (3.15" × 1.58" × 0.7")
Weight(without battery)		35g (without battery)
LCD		Negative Graphic LCD
Battery		alkaline 1.5V AAAx1

PC System Requirements and Accessories



PC System Requirements and Accessories

- PC system requirements for the product are as follows:
- Microsoft OS (Windows 98, ME, 2000, XP)
- CD-ROM Drive
- Pentium 200MHz or higher CPU
- 32MB (64MB for Windows ME or 2000) or higher RAM
- Available hard disk space of more than 128 MB
- (Additional hard disk space is required for storing music files)
- USB port available (Rear port highly recommended)



Included Accessories



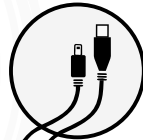
Software CD



Stereo Earphones



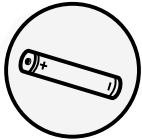
User Manual



USB cable



Neck Strap



AAA battery



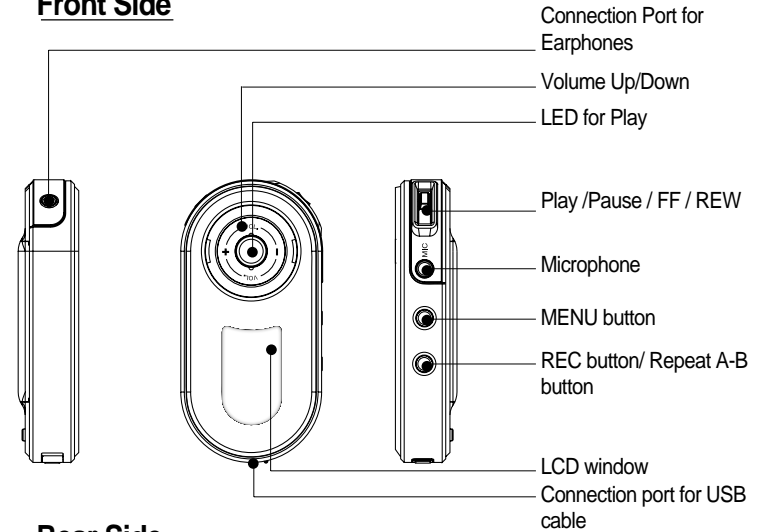
Carrying Case

※ The optional items may not be included depending on areas and markets.

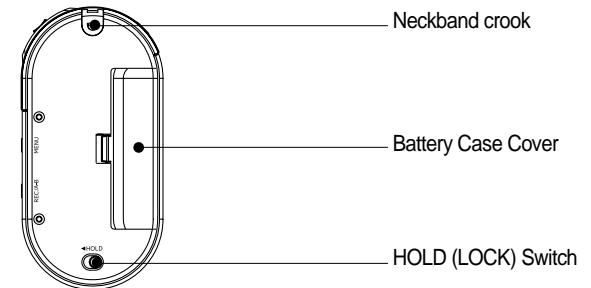
Hardware Descriptions



Front Side



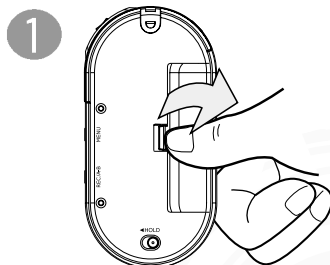
Rear Side



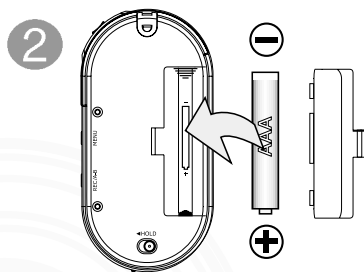
About Power Supply



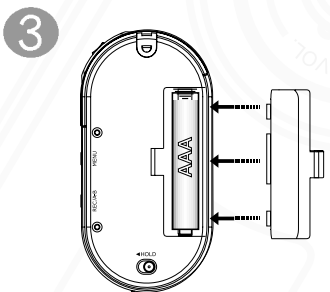
Using cylindrical AAA type batteries



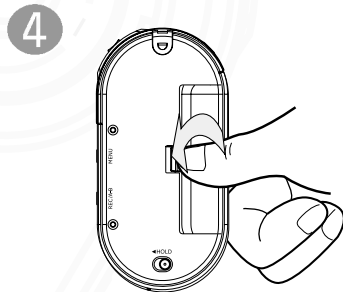
Open the battery case cover on the back by pushing the tip in the direction of arrow using a finger / fingernail.



Insert an AAA battery with correct polarity positions as shown in the picture



After fitting the cover to the groove, match the cover with the case grooves






After matching them, push the cover in the direction of the arrow to close until you hear a small 'click'.

About Power Supply



Battery Power Indicator

- At its initial start-up, the remaining battery indicator may fluctuate. After 5 or 6 seconds, the display will show the actual reading.
 →  →  (Based on the inserted battery)
 (Full) (Medium) (Low)
- Due to the characteristics of regular batteries, there can be situations when the product does not operate even when the battery level indicator shows above medium level. When this happens, please exchange the batteries with new ones.
 (Alkaline batteries last longer than manganese batteries)
 ※ Exchange batteries when the following happens:
 - The indicator displays "Low battery" sign.
 - The player stops or does not respond to pushing buttons.
 - LCD light does not turn on when buttons on the main body are pushed.

Type	MP3 Play
Alkaline battery	12 hours(alkaline 1.5V AAA ×1)

- Continuous play time
 - Using One Battery: 12hours (AAA alkaline dry cell)
 - MP3 128kbps - Based on Vol. User EQ Max.
- Conditions for elapsing time
 - Output: Max. 7mV(R)
 - Above values were measured using commercially available alkaline batteries, and actual elapsing time depends on the type of batteries, manufacturer and its usage conditions.

Software Installation



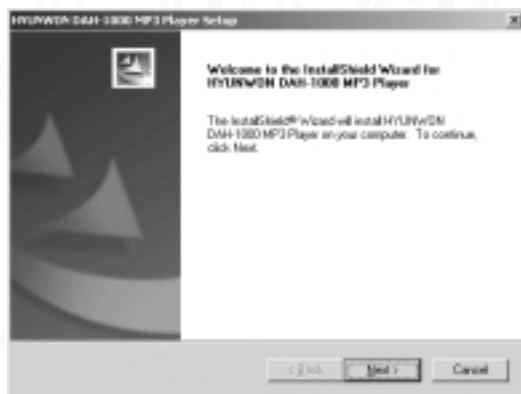
Please Note!

With the special feature of Mass Storage system, the product is able to upload and download the files without installing any software in the PC.

- **For Windows 98SE:** The software should be installed before using the product. (Can not be recognized in the PC)
- **For Windows ME, 2000, XP:** The software only needs to be installed when you try to update the product OS.

1 Insert the installation CD in to the CD-ROM drive.

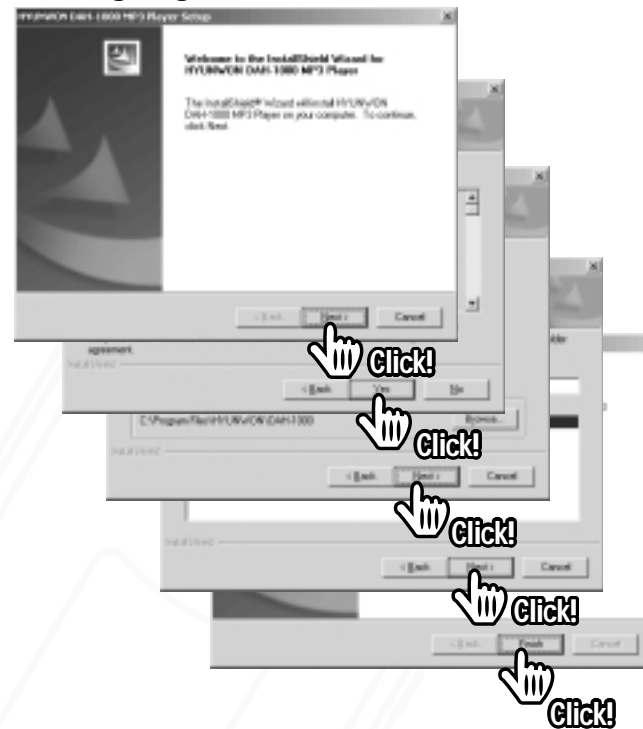
The following installation window appears.



Software Installation



2 Continue the installation in accordance with the following diagrams.

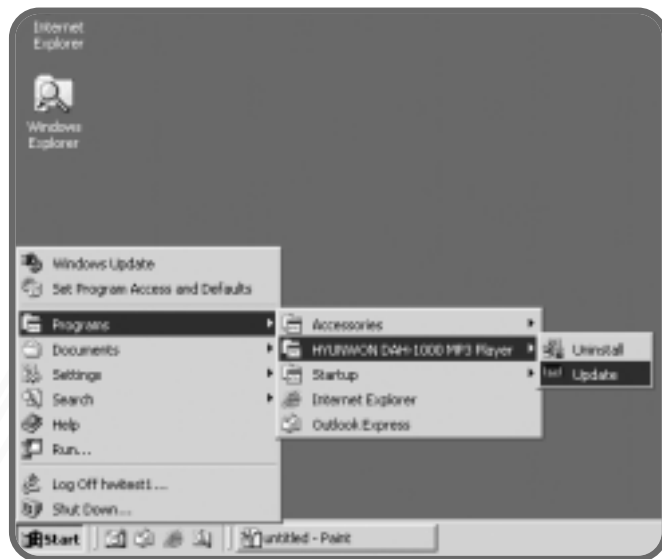


※ Reboot the system when requested by Windows.

Software Installation



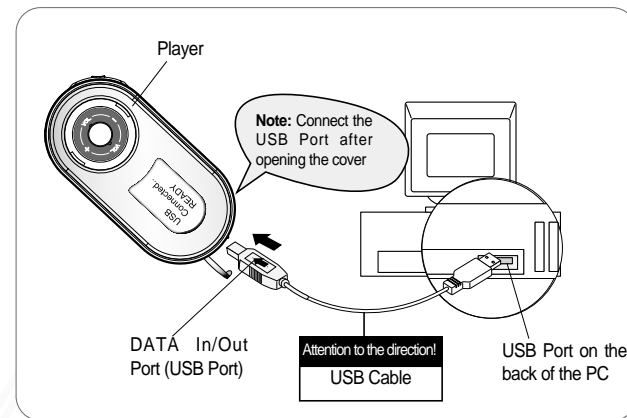
- 3** Verify if the Menu “Start → Program → HYUNWON DAH-1300 MP3 Player” has been created as in the following diagram.




Connecting the Player to a PC using a USB Cable



- 1** Connect one end of the ‘supplied’ USB cable to one of the USB ports on the back of the PC, and connect the other end to the player.



 Note : Connection Error may occur when connecting the player into the USB port or USB hub at the front of the PC.

- 2** After the USB connection has been successfully completed a green arrow icon will appear on the toolbar located at the bottom-right of the screen.



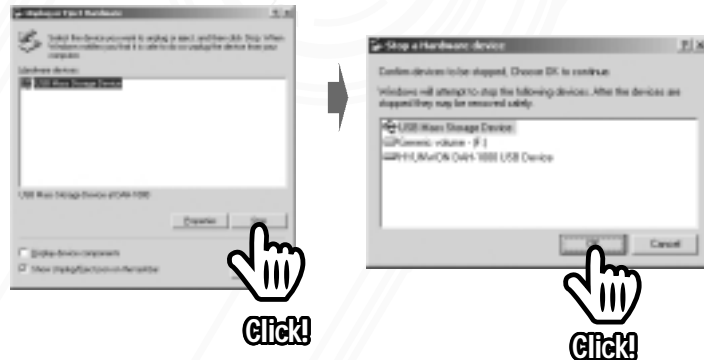
Disconnecting the USB cable from the Player



- 1 Before disconnecting the USB cable from the PC, double click on the green arrow icon on the toolbar located at the bottom right of the screen.



- 2 Select the 'USB High Capacity Storage Device' to be disconnected, then click on the [Stop] and [OK] buttons subsequently.



Disconnecting the USB cable from the Player



- 3 When the dialogue box "Safe Removal of the Hardware" appears, click on the [OK] button to remove the USB Cable.



Please Note!

- Fatal errors may occur in the PC or the product if you do not follow the above procedures when removing the USB cable.
- Fatal errors may occur in the PC or the product if the USB cable was removed during download/ upload/ format/ OS Update.

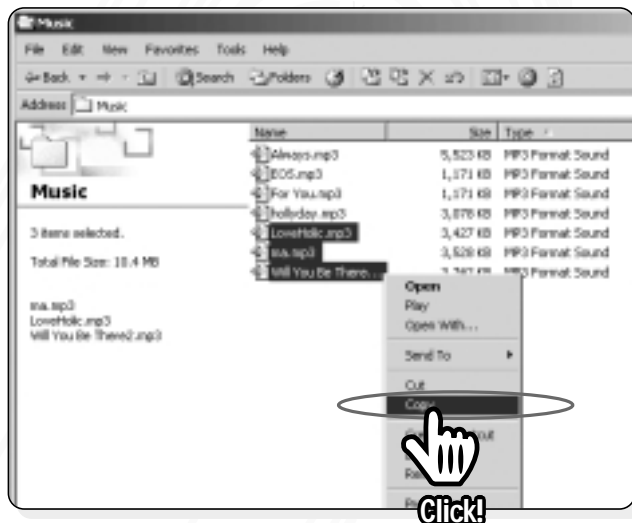
File Download/Upload



Please Note!

- ◆ As well as playing music, you may also use the product to upload/download any other data files (*.jpg, *.xls, *.doc,...) to/from the PC as a portable disk.

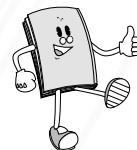
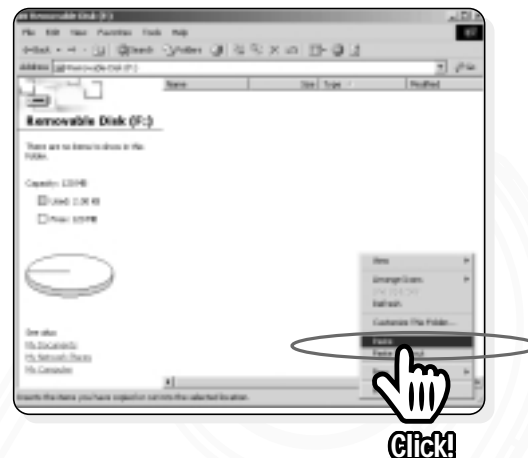
- 1 Connect the product to the PC using the USB cable and select the files you would like to transfer to the unit then click the right button on your mouse and select 'Copy' from the list of options.



File Download/Upload



- 2 Now select the device as your new directory and then using the right button of the mouse click on the 'Paste' to paste the file(s) to the portable disk as depicted below.



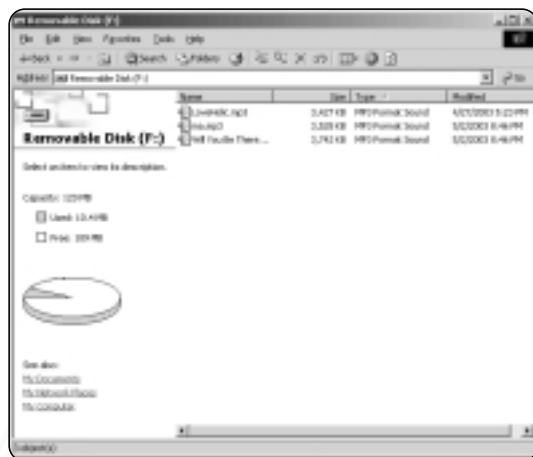
Note!

- The product is recognized as a portable disk and is located in "My Computer" window.
- DO NOT remove the USB Cable during file transfer. If so, fatal errors may occur with your PC or the player.

File Download/Upload



3 File copy has now been completed as shown below.



Please Note!

- To upload and save the file to the PC the same method is used, just select the player as the source drive.
- Drag & drop the file using a mouse when downloading/uploading a file.

OS Update & Format



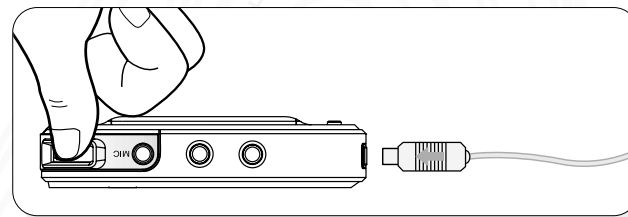
Please Note!

- ◆ Install the program on the PC before updating the OS. (See page 8)

1 Download the OS for the player from the CD to the PC.

Recovery Mode

The system will enter into the Recovery Mode 5 seconds after connecting the USB cable to the player while pressing and holding the Play button on the player.



- ※ When running the Recovery Mode for the first in XP, install the Player Recovery Device" as instructed by the PC.



Note!

Update the OS when the product is malfunctioning. Contact our service office if the product is still malfunctioning after the OS update.

OS Update & Format

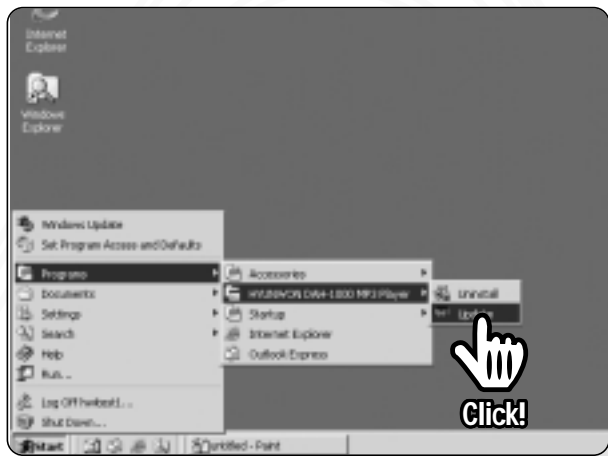


Please Note!

What is OS?

OS is an internal operating system to drive the product.

- 2** Click on “Start → Program → HYUNWON DAH-1300 MP3 Player → Update” subsequently.

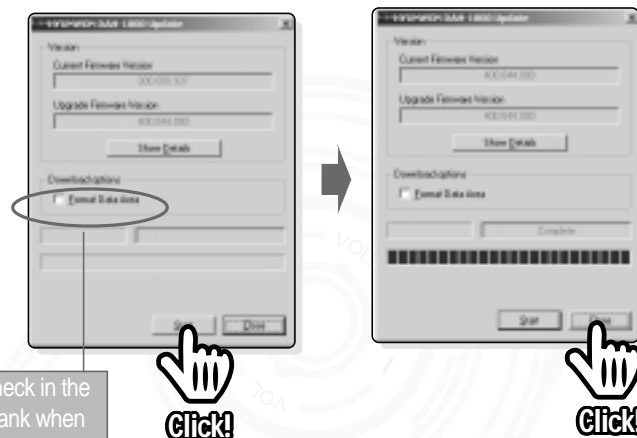


OS Update & Format



3

Click on “Start” button from the OS update window which appears about 10 seconds later to complete the OS Update and “Close”.



4

The OS Update has been completed. Now use the product by turning the power on.



Note!

- ◆ Do not remove the USB Cable during the OS Update of Format. If so, fatal errors may occur in the PC or the product.

OS Update & Format

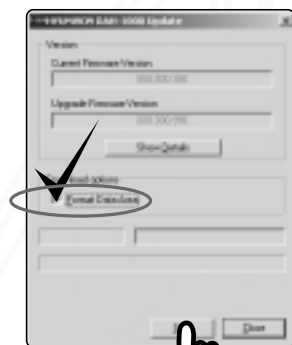


About the Format

- ◆ Take care before formatting the product, ALL files will be deleted.

Format with OS Update

- ◆ Refer to OS Update on page 18~19.



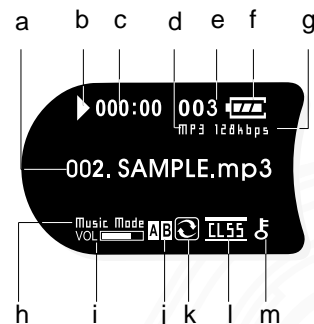
1 Check in the blank of “Format Data Area”

2 Click on the “Start” to format the product and update the OS at the same time.

LCD DISPLAY Illustration

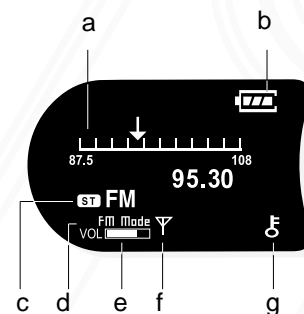


MUSIC MODE



- a. Displays music titles and the sequence
- b. Displays the current music status (Play ▶ Pause ⏸ Stop ■)
- c. Displays the current play time of the music
- d. Displays the file format
- e. Displays the total number of tracks
- f. Displays the remaining battery life
- g. Displays the file compression rate (Bit rate)
- h. Displays the Playback Mode
- i. Displays the current volume level
- j. Displays the A-B Range
- k. Displays the Repeat / Play Mode
- l. Displays the Equalizer
- m. Displays the Hold Status

FM MODE



- a. Displays the current frequency tuned
- b. Displays the remaining battery life
- c. Displays the Stereo/Mono
- d. Displays the Playback Mode
- e. Displays the current Volume
- f. MUTE(no antenna shown)/ MUTE OFF (antenna shown)
- g. Displays the HOLD status

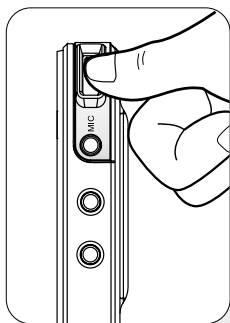
Power On /OFF



MUSIC MODE

1 Power on

Push the Play button(▶) to turn on the power an intro screen will be displayed.



※ Providing there is remaining battery life.

2 Power off

Power off: Press and hold the Play button(▶) for 5 second to turn off the power.



※ In the Pause/Stop mode the power turns off automatically if there are no keys pressed as per the time setting for Auto Power OFF and Sleep Mode. (See 43 pages)

Music Listening



1 Music Playing

Press the play button(▶) to play the music at Stop or Pause status.



Note!

The blue LED on the product flashes when either music or voice files are playing.

- It also blinks during LED Time setting. (See page 42)

2 Pause

While playing music, push the Play button(▶)briefly to stop the music temporarily.



Volume Control

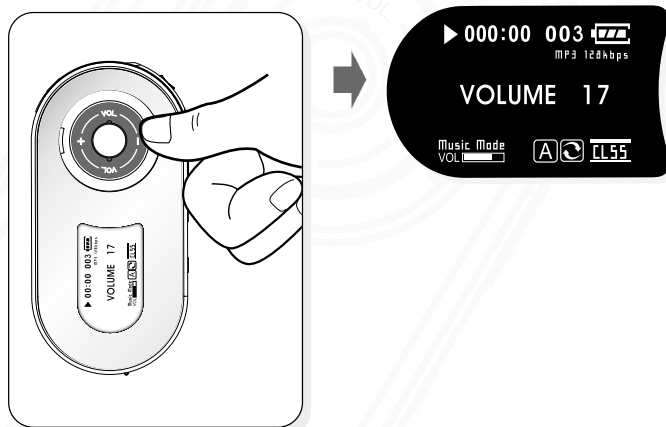


1 Volume Up

By pressing the (+) button briefly it increases the volume by one step, while pressing the button for a longer period increases the volume continuously until maximum is achieved or pressure is released.

2 Volume Down

By pressing the (—) button briefly it decreases the volume by one step while pressing the button for a longer period decreases the volume continuously until minimum is achieved or pressure is released.



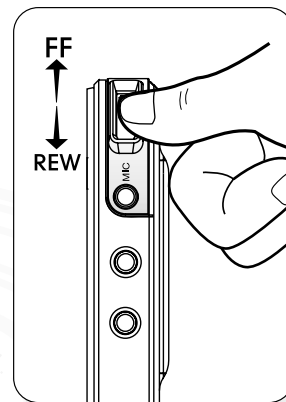
- Volume level can be set within the range from MIN (00) to MAX (30).

Music Selection



1 By briefly pressing the FF button :

The next song will be selected in Play or Stop mode.

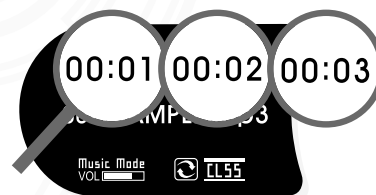


2 By continuously pressing FF button :



In Stop Mode

Fast forward searching all songs



In Play Mode

Fast forward searching in the current song.

Music Selection



3 By briefly pressing the REW button :



In Stop Mode

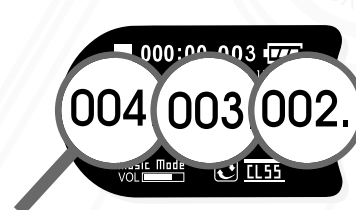
The previous song will be selected.



In Play Mode

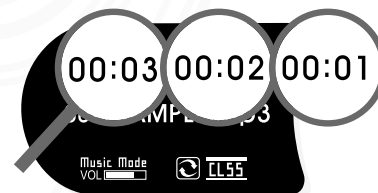
The current song will be replayed from the first.

4 By continuously pressing the REW button :



In Stop Mode

Fast backward searching all songs



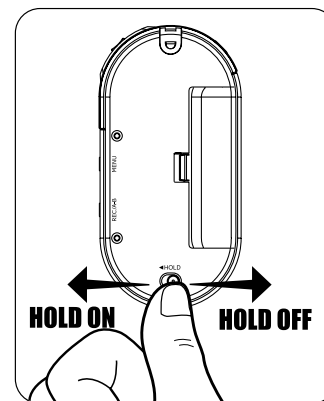
In Play Mode

Fast backward searching in the current song

HOLD (Lock Function)



- HOLD (Lock) is set with a padlock icon displaying for 3second on the LCD when you push the HOLD switch on the back of the product as shown below figure.



- ◆ Once in the HOLD mode, no button will be recognized displaying HOLD ⏹ Icon on the LCD.

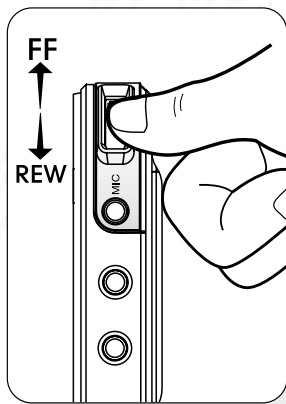
- ◆ By pushing the HOLD(⏹) switch to the other direction the lock can be released with having the icon disappeared. .



MODE Changing



- 1 Push and hold the **MODE** button.
- 2 Press the **MENU** button after moving to desired **MODE** using **FF/REW** button.



MUSIC MODE



VOICE MODE



FM MODE

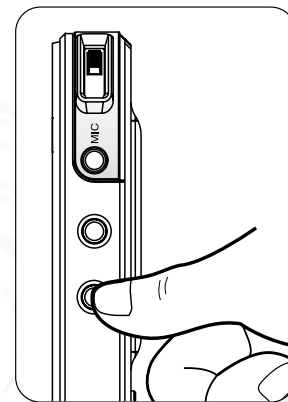
※ The most recent **MODE** setting will be saved when turning the Power OFF.

Voice Recording



**Please Note
About the recording...**

- ◆ The voice recording starts when you push and hold the **REC/ A-B** button.
- ◆ To record from the **FM radio...**
Record the sound source in the **FM Mode**.
- ◆ To record **Voice...**
Record the voice source in the **Music** or **Voice Mode**.
- ◆ An orange colored **LED** flashes during the voice recording.
It also blinks at **LED time setting**. (See page 42)



Voice Recording



- 1 The voice recording starts when you push and hold the REC/ A-B button.**

Displaying time elapsed for recording

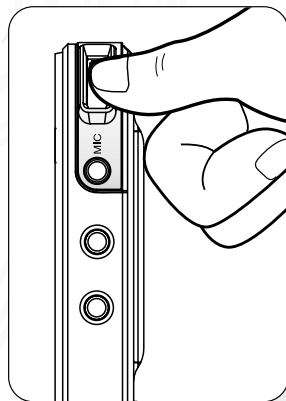
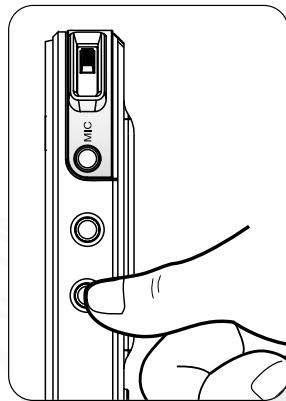


Remaining recording time in the memory

- 2 To stop the recording press the Play button.**



※ The files are saved in the following sequence V001, V002, V003....



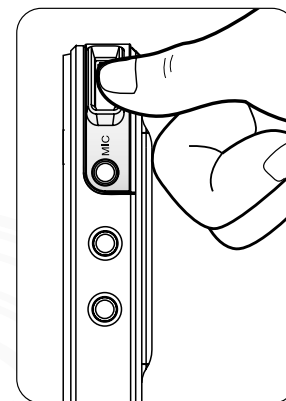
Voice Recording



- 3 By pressing the Play button again the saved file starts can be played back.**



※ The functions for Play/Stop/Volume Control/ FF, REW are the same as in the MUSIC Playing MODE.



Voice Recording



Please Note!

- You can only listen to the saved file after entering Voice Recording Mode.
(The voice file can not be played back in the Music Playing MODE)
- After recording the voice file will be saved as a ADPCM file with the extension of ADP at the end of the file name.
- The volume is automatically adjusted in the recording.
- When the memory is full, the voice recording will automatically stop and the file is saved only until that point.
- The sensitivity of the voice recording may vary according to the distance between the product and the voice source.
- Malfunctions may occur if battery is removed or the batteries power is exhausted unexpectedly, recorded file may not play.

FM RADIO MODE



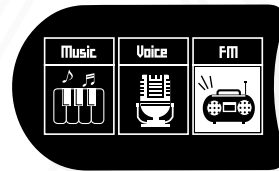
- 1 Push and hold the MODE button.**



Note!

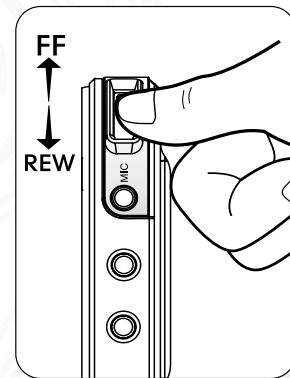
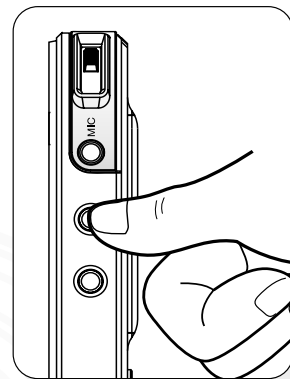
The earphone takes the roll of radio antenna.

- 2 Press the MENU button after moving to FM Mode using FF/REW button to listen to FM Radio.**



A pink LED flashes when playing the FM radio.
It also blinks when setting the LED time. (see page 42)

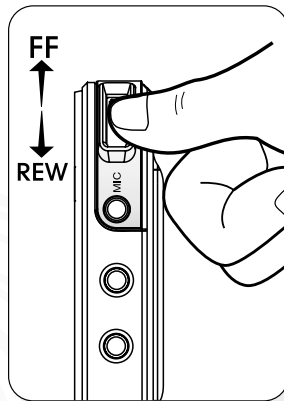
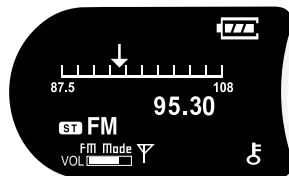
※ The functions for Play/Stop/Volume Control are the same as MUSIC Playing MODE in control



Searching FM Frequencies



Set the FM frequencies using the FF/REW button.



◆ Searching Frequencies Manually

You can search frequencies by pushing the FF/REW button briefly. (Increment or decrement by 0.05MHz)

◆ Searching Frequencies Automatically

Player searches for a frequency by incrementing/decrementing when you push and hold the FF/REW button for longer than 5 seconds. The auto setting is fixed at the frequency with high reception rate during the search.

Storing the Selected Frequency

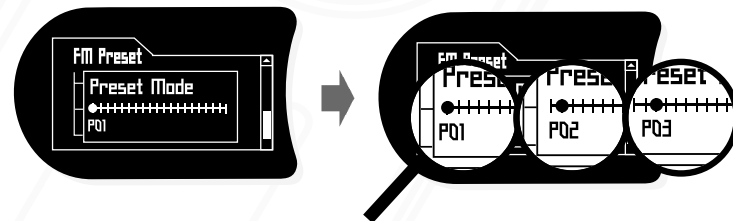


Storing the searched frequency manually

- 1 Using the FF/REW button you can store the searched frequency after entering to FM Preset MODE by pressing the MENU button briefly after selecting the "Manual Preset".



- 2 Using the FF/REW button, briefly press the MENU button after selecting "Preset No." to be stored.



Storing the Selected Frequency



- 3** Press and hold the **MENU** button to save the frequency after selecting one using the **FF/REW** button.



Note!

- You may store multiple frequencies with the above method.
- Up to 20 frequencies may be stored in the product.

- 4** Press the **REC/A-B** button to search the stored frequency.

- By pressing **REC/A-B** button once briefly: the Preset No. goes back to the previous Preset No.
- By pressing **REC/A-B** button twice briefly: the Preset No. goes forward to the next Preset No.

Storing the searched frequency automatically

- 1** Press the **MENU** button briefly.

Storing the Selected Frequency



- 2** Press the **MENU** button once again briefly after selecting “Auto Preset” from the **FM Preset MODE** using the **FF/REW** button.



- 3** Press the **MENU** button briefly once again to store the selected frequency after selecting “Yes” from **Auto Preset MODE** using **FF/REW** Button.



Please Note!

- It stores a frequency automatically when it receives a frequency with high reception rate with its Preset number automatically incrementing.
- After completing search to 108.0MHz, the Preset Number changes to 'P01' and it starts receiving signal at the preset frequency.
- Searching is stopped when you press the **STOP** button during Auto Search

- 4** Press **REC/A-B** button briefly to search the stored frequency.

MENU Setting



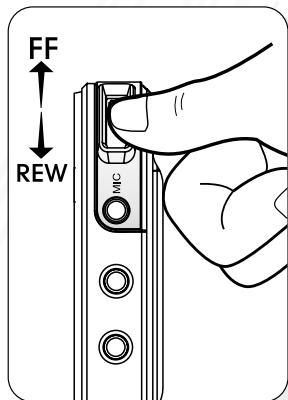
MENU Searching



Note!

◆ Entering the MENU Mode.

- Press the MENU button from the Voice Recording or Music Playing Mode to enter the MENU Screen.



※ Scroll to the desired menu using FF/REW button.

Setting

- Search Speed
- Intro Play Time
- Recording Mode

Display

- Contrast
- Back Light Time
- LED Time

Timer

- Auto Power Off
- Sleep Mode

Play

- Play Folder
- Play Mode

Select EQ

User EQ

- User EQ_1
- User EQ_2

Erase

About

MENU Setting



Please Note!

To select and save the Menu

- **MENU Selection:** Press the MENU button briefly after selecting the desired option using FF/REW button.
- **Storing Menu Setting:** Press the MENU button for a longer period after setting the Menu.
- **Menu Cancellation:** Press "REC/A-B" button to go back to the previous menu.

Setting

Select the "Setting" from the MENU Mode.

◆ Search Speed

The function enables to set the search speed (X4 → X8 → X16 → X32) during the music selection.

※ See page 26



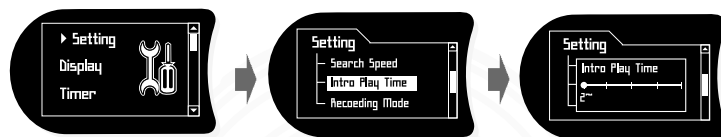
MENU Setting



◆Intro Play Time

When listening to only the intro parts of all the tracks stored, one of 2"/4"/6"/8"/10" can be selected. (Verify it after setting the intro from the Play Mode.)

* See page 26



◆Recording MODE

When performing Voice/Radio Recording, one of 32/44/64/88/128/192 kbps can be selected as the recording Bit Rate.

※ Higher Bit Rate enables the higher sound quality but creates a larger file.



MENU Setting

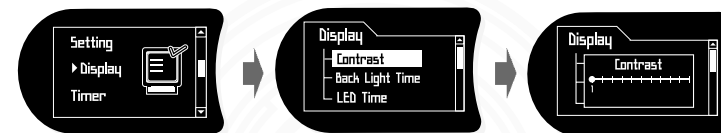


Display

Select "Display" from the MENU Mode.

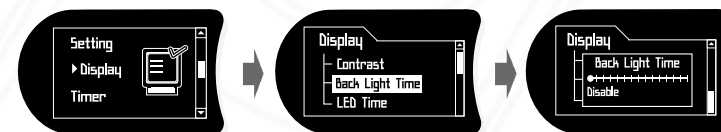
◆Contrast

The brightness of the screen can be set in Contrast, within the range of 1 to 11.



◆Back Light Time

Back Light duration time can be set within the range of 0 to 15 seconds.



MENU Setting



◆ LED Time

The function enables to set the duration of LED flashes (Disable → 5sec. → 10sec. → Always) when using the product.

※ Disable: LED off

※ Always: LED flashes continuously

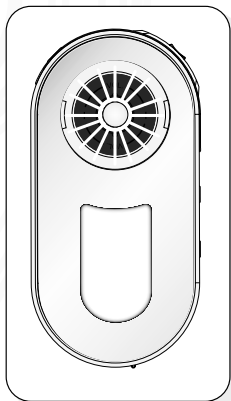


Please Note!

About LED Color...

- **Blue flashes:** when playing music/voices.
- **Orange flashes:** when recording voices.
- **Pink flashes:** when entering to the FM Mode.

※ LED flashes shortens the battery life time.



MENU Setting



Timer

Select “Time” from the MENU Mode.

◆ Automatic power save mode

It is possible to select the automatic power save time for non usage (Disable/1 min/2 min/3 min/10 min) in Pause/Stop status.

- Disable: The power will not turn off automatically.



◆ Sleep Mode

It is possible to select the Sleep Mode to turn the power off automatically after a preset time. (Disable/10 min/20 min/30 min/60 min) in Pause/Stop/Play status.



- Disable: The power will not turn off automatically.

MENU Setting

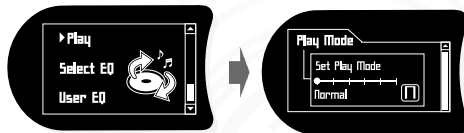


Play Mode

Select “Play Mode” from the MENU Mode

◆Play Mode

This mode enables you to set the playback function to one of the following “NORMAL -> INTRO -> REPEAT 1 -> REPEAT-ALL -> RANDOM 1 -> RANDOM-ALL”.



Normal : plays all music files once sequentially



Intro : plays only the intros of all music files sequentially



Repeat 1 : plays the selected music file repeatedly



Repeat All : plays all stored music files repeatedly



Random 1 : plays music in a random fashion and stops after playing all the music files once.



Random All : same as Random 1 mode, but keeps on playing repeatedly without stopping

MENU Setting

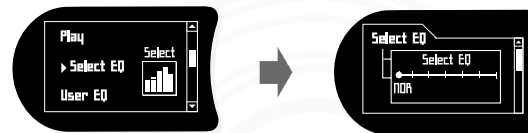


Select EQ

Select “Select EQ” from the MENU Mode

◆Select EQ

You can select your desired EQ mode from the following preset and user options (NOR->ROCK->JAZZ->CLSS->POP->USER EQ1->USER EQ2)



User EQ

Select “User EQ” from the MENU Mode

◆User EQ

The product supports two USER EQ MODE



- 1) Select the Band you want to control using the FF/REW button.
- 2) In the selected band, the value can be controlled using the Volume button.

※ The set value for User EQ will be stored in Select EQ Mode.

MENU Setting



Erase

Select “Erase” from the MENU Mode.

◆Erase

This function allows the deletion of files from the product without it being connected to PC.



- 1) A warning message “Are you sure you want to delete this file?” shows on the LCD screen.
- 2) Choose “Yes” or “NO” using the FF/REW button.



Please Note!

About deleting files:

- ◆ Cancelling the function is not allowed while deleting.
- ◆ The function is not available when playing the file.

MENU Setting

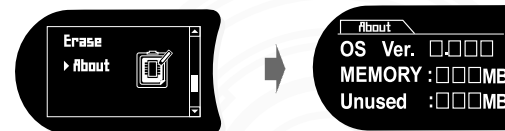


About (Specification of the product)

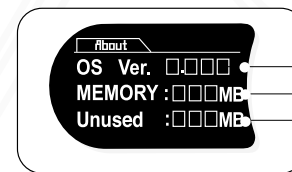
Select “About” from the MENU Mode

◆About

This function enables you to display the OS version, full memory capacity and the remaining capacity of the product.



Please Note!



Displays OS version currently installed in the product.

Displays full memory capacity currently installed in the product. (exclusive of the memory for OS)

Displays only available memory capacity.

※ Only the current memory can be displayed excluding the OS memory which is built-in in the product.

Setting for Ranged Repeat

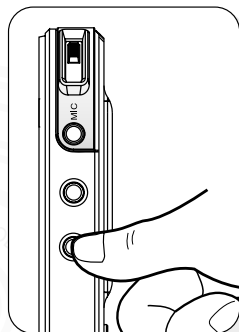


REPEAT A-B MODE (playing a particular section of the current music repeatedly)

- 1 Press the REC/A-B button once briefly while music is being played.



The display shows 'A'



- 2 After 3 seconds or longer, press the REC/A-B button once again briefly.



The Display shows 'A B' and the player repeats the 'A-B' section.

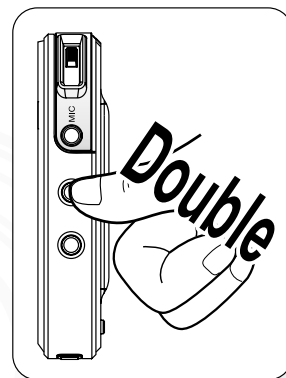
- 3 Pressing the REC/A-B or FF/REW button briefly will release the REPEAT A-B Mode.

How to select a folder



How to select a folder.

- 1 To enter FOLDER NAVIGATION mode, press MENU button "DOUBLE TIMES" during PAUSE/STOP/PLAY mode.



One More tip!

FOLDER NAVIGATION mode allows music to pause temporarily.

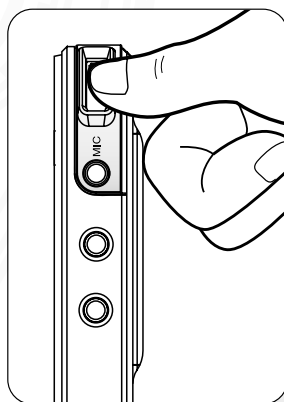
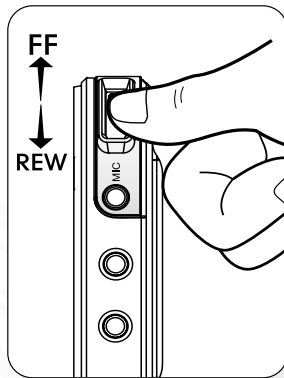
How to select a folder

- 2** Select the folder you want by moving FF/REW key up or down. Then, press the PLAY/PAUSE Key to select the folder.



※ if there's no folder displaying, please go to step 3.

- 3** Press PLAY/PAUSE or MENU button to play the music file.



It May Not be a Trouble!

Case	Check	Action
Does not respond to the buttons being pressed	<ul style="list-style-type: none"> ▶ Batteries or rechargeable batteries are inserted correctly? ▶ Battery or rechargeable batteries are exhausted? ▶ Lock is in the HOLD position? ▶ Loose contact of the earphones to Player 	<ul style="list-style-type: none"> ▶ Put batteries in with correct polarity ▶ Replace the batteries or recharge the rechargeable batteries ▶ Release the lock ▶ Make sure the contact is tight
The digital audio player malfunctions	<ul style="list-style-type: none"> ▶ Battery contact is loose? ▶ Abuse the buttons when pushing? ▶ The batteries are exhausted? 	<ul style="list-style-type: none"> ▶ Insert the battery properly, then close the cover completely ▶ Press only the necessary buttons accurately ▶ Replace the batteries or recharge the rechargeable batteries
It does not play MP3	<ul style="list-style-type: none"> ▶ There is a music file on the memory? ▶ Enough battery life remaining? 	<ul style="list-style-type: none"> ▶ Download music files to the memory ▶ Replace the batteries or recharge the rechargeable batteries
It does not download MP3	<ul style="list-style-type: none"> ▶ USB cable is connected properly? 	<ul style="list-style-type: none"> ▶ Make sure the connection is properly made

Warranty Services



- Customers are entitled to warranty service for a period of one year from the date of purchase. Warranty service does not apply to defects resulting from customer fault or acts of God.

Non-warranty service shall apply to defects resulting from :

1. Infiltration of foreign matter, such as water, liquid, or sand.
2. Breakage due to dropping or severe impact.
3. Damage to or deformation of the outer case caused by organic solvents, such as benzene.
4. Use of parts other than those certified by the manufacturer.
5. Loss or breakage of any parts or components caused by unauthorized disassembly.
6. Repair or modification done by any persons other than manufacturer authorized personnel.
7. Acts of God, such as lightning, storm or flood.
8. Purchase from unauthorized retailers.

For more warranty information and RMA service, please visit the our web site at <http://www.hyunwon.com>.

FCC RF INTERFERENCE STATEMENT



Note

This equipment has been tested and found to comply with the limits for a Class B digital device, pursuant to Part 15 of the FCC Rules. These limits are designed to provide reasonable protection against harmful interference in a residential installation.

This equipment generates, uses and can radiate radio frequency energy and, if not installed and used in accordance with the instructions, may cause harmful interference to radio communications. However, there is no guarantee that interference will not occur in a particular installation. If this equipment does cause harmful interference to radio or television reception which can be determined by turning the equipment off and on, the user is encouraged to try to correct the interference by one or more of the following measures.

- Reorient or relocate the receiving antenna.
- Increase the separation between the equipment and receiver.
- Connect the equipment into an outlet on a circuit different from that to which the receiver is connected.
- Consult the dealer or an experienced radio, TV technical for help.
- Only shielded interface cable should be used.

Finally, any changes or modifications to the equipment by the user not expressly approved by the grantee or manufacturer could void the users authority to operate such equipment.

CAUTION

Changes or modifications not expressly approved by the party responsible for compliance could void the user's authority to operate the equipment.

THIS DEVICE COMPLIES WITH PART 15 OF THE FCC RULES. OPERATION IS SUBJECT TO THE FOLLOWING TWO CONDITIONS: (1) THIS DEVICE MAY NOT CAUSE HARMFUL INTERFERENCE, AND (2) THIS DEVICE MUST ACCEPT ANY INTERFERENCE RECEIVED INCLUDING INTERFERENCE THAT MAY CAUSE UNDESIRED OPERATION.

FCC ID:PCMDAH1300

Made in Korea.

WARRANTY FORM

Warranty Term: 1 year from the date of purchase Product

Model :

Date of Purchase : (month) (day) (year)

Name of purchaser : Phone Number :

Address :

Place Purchased : Phone Number :

Address :



Hyunwon Incorporated

- You need to show this Warranty Certificate with the date of purchase when requesting service, in order to receive satisfactory services. Please keep the Warranty Certificate in a safe place.

1. The warranty service on this product is provided based on the information contained in the Warranty Certificate.
2. The warranty service takes effect from the date of purchase, so please make sure you enter the date of purchase on the Warranty Certificate at the time of purchase. (If the date of purchase cannot be verified, the date 6 months from the date of manufacturing will be use instead.)
3. This Warranty Certificate is not reissued.

The exterior or dimensions are subject to change without prior notice to the customer in order to improve the product quality.

