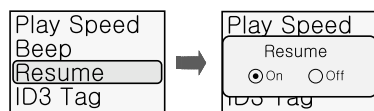


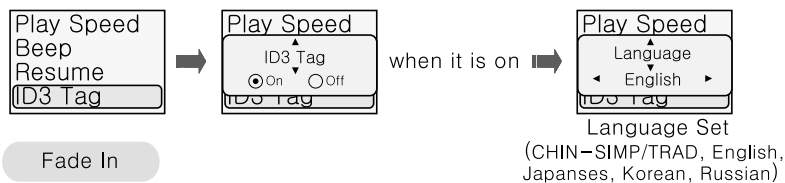
Resume

This function fully recovers all previous settings for the last song' s volume, EQ, Playlist and all others when you turn the power on again.



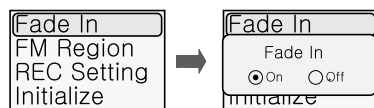
ID3 Tag

Choose ON to view the song information including Title, Artist, Album, Year and Genre in sequence. (File name only is displayed with the function off)



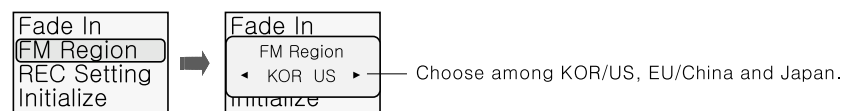
Fade In

Choose this function ON to enable sound volume to increase smoothly.



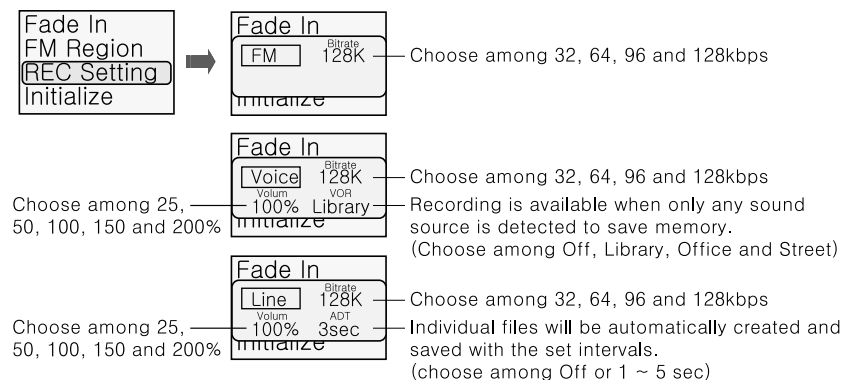
FM Region

This enables you to set four major regions for FM signals around the world.



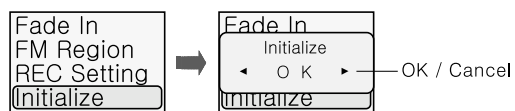
REC Setting

This is to select REC related menu options among FM, Voice and Line in.



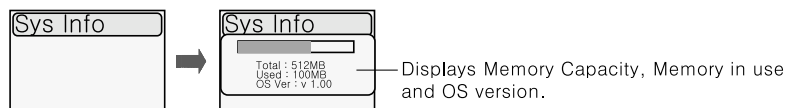
Initialize

This function initializes the product.



Sys Info

This enables you to view the product information.

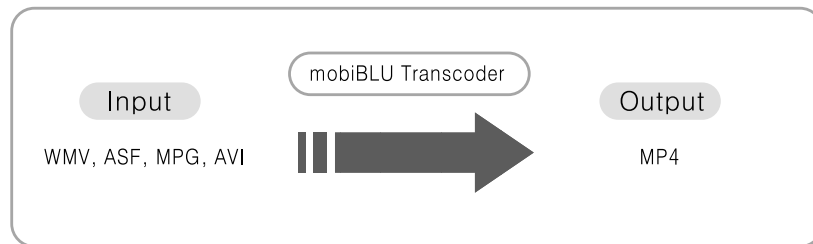


10. Software

1. mobiBLU Transcoder	64
2. mobiBLU Transcoder Installation	65
3. File conversion (Blocked files/ multi-files)	68
4. Viewing File Information	72
5. Option Setting	73
6. Playing mobiBLU Player	75

mobiBLU Transcoder	Software
--------------------	----------

This is a program used to convert common motion image formats such as WMV, ASF, MPG and AVI to MP4 format that DAH-1700 can play.



! System Requirement

1. H/W
 - CPU : Intel Pentium4 1GHz or higher
 - HDD : 20MB or more space
2. S/W
 - Above Microsoft Windows 98 SE
 - Microsoft DirectX 9.0
 - MS Media Player 9.0
 - (Recommended Code Pack) C Pack or K-Lite Codec Pack

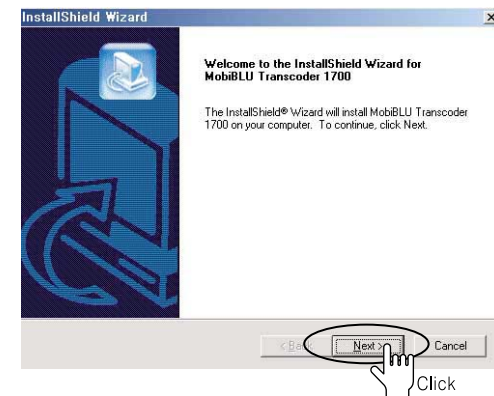
Installation of mobiBLU Transcoder	Software
------------------------------------	----------

This is a program used to convert common motion image formats such as WMV, ASF, MPG and AVI to MP4 format that DAH-1700 can play.

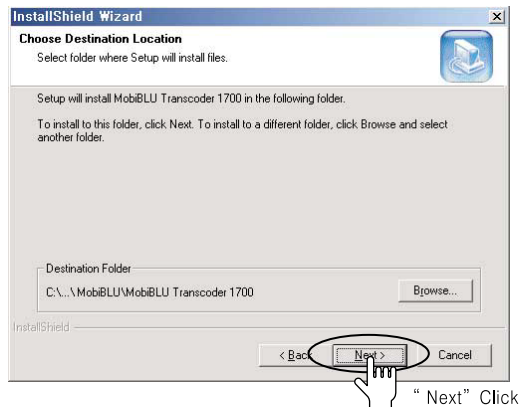
1. Click on “mobiBLU Transcoder 1800” following the CD insertion.



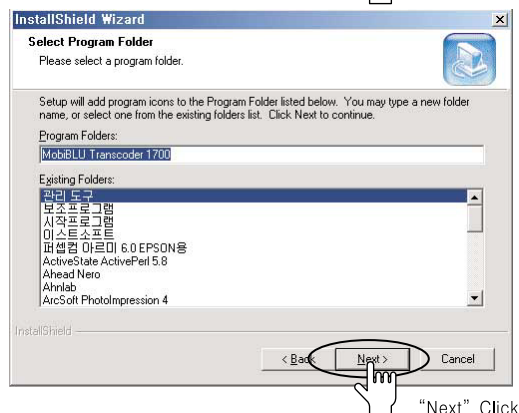
2. Click on “Next”



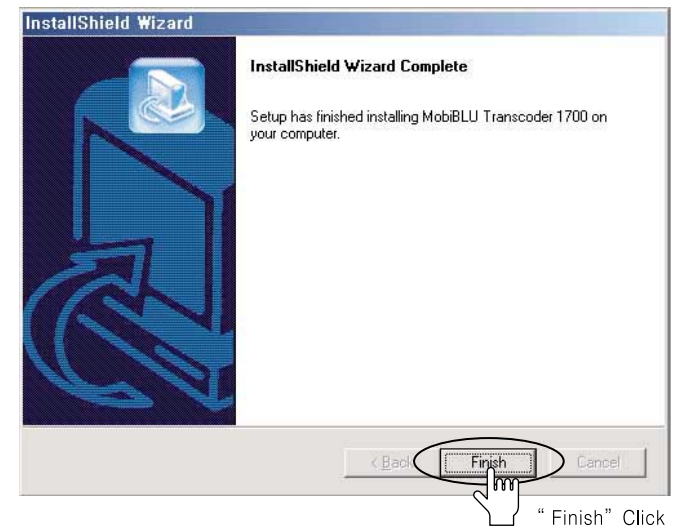
3. Click on "Next" following the selection of directory where you want to install the program in.


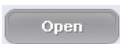


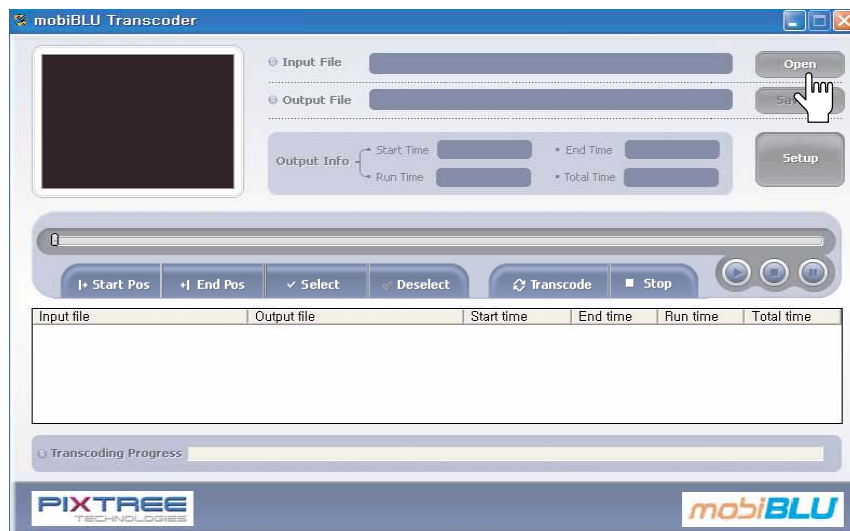
4. Click on "Next" following the selection of program folder.




5. Click on "Finish" to complete the installation.

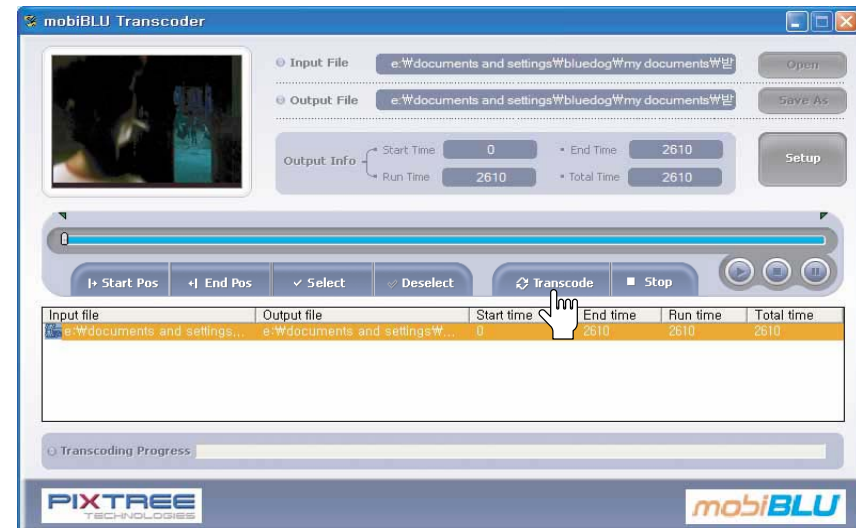


Double click on  icon on the desk top ➡ press  to choose Input File.



[Initial Window]

➡ Click on  ➡ it stops and is saved automatically at the completion of Transcoding.



[Transcoding is in process]

Sectioned File Conversion

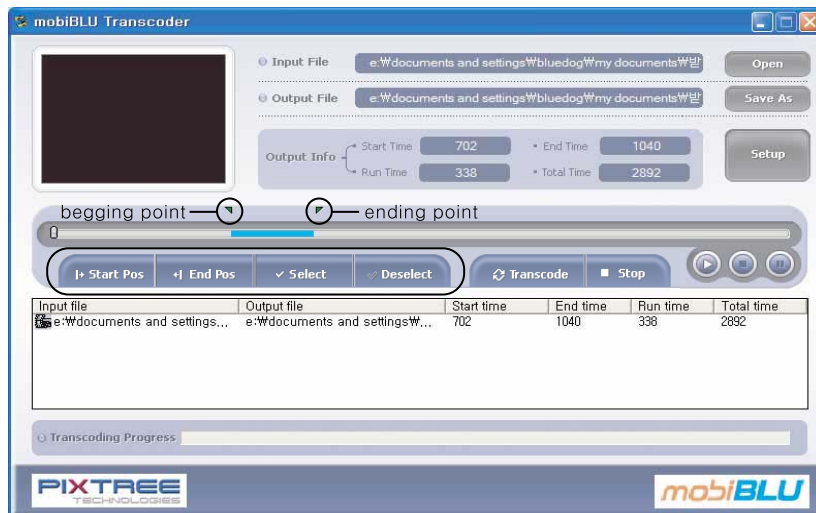
Software

A specified section in a file can be Transcoded.

Move File Selection → File Play → shift Seek Bar to desiring position

→ press **Start Pos** to set begging point → press **End Pos** to set ending point

→ press **Select** to enter the section. (press **Deselect** to cancel the section)



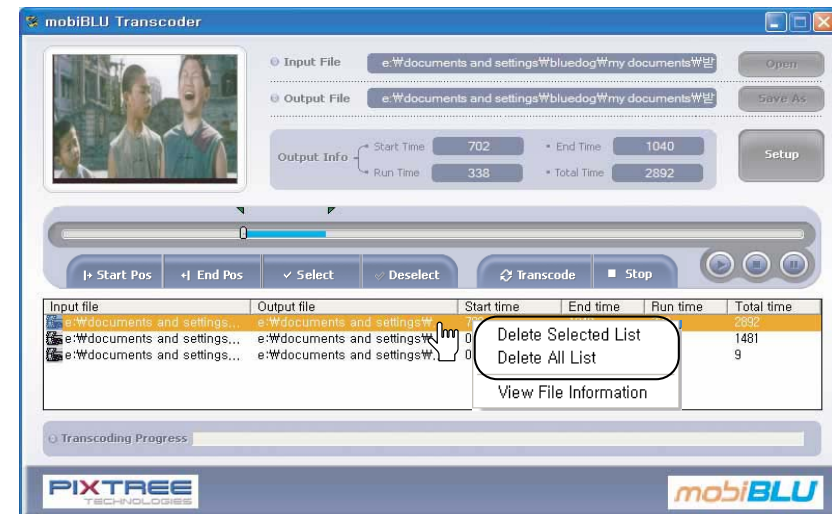
Converting Multiple Files

Software

The Transcoding can be done for multiple file at a time.

Use **Open** to select files → press **Transcode** to transcode the files

To cancel a registered file, click on the file in List Box and choose Delete Selected List using the right mouse button. Click on Delete All List in the box to cancel all registered files.



Viewing File Information

Software

You can see file information by choosing View File Information by double-clicking on one of key-registered file lists or by using the right mouse button. (The file information dialog box will disappear when clicking on ESC.)



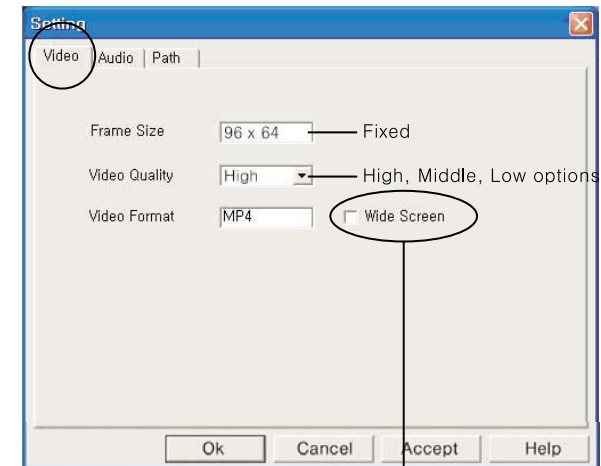
Option Setting

Software

Press



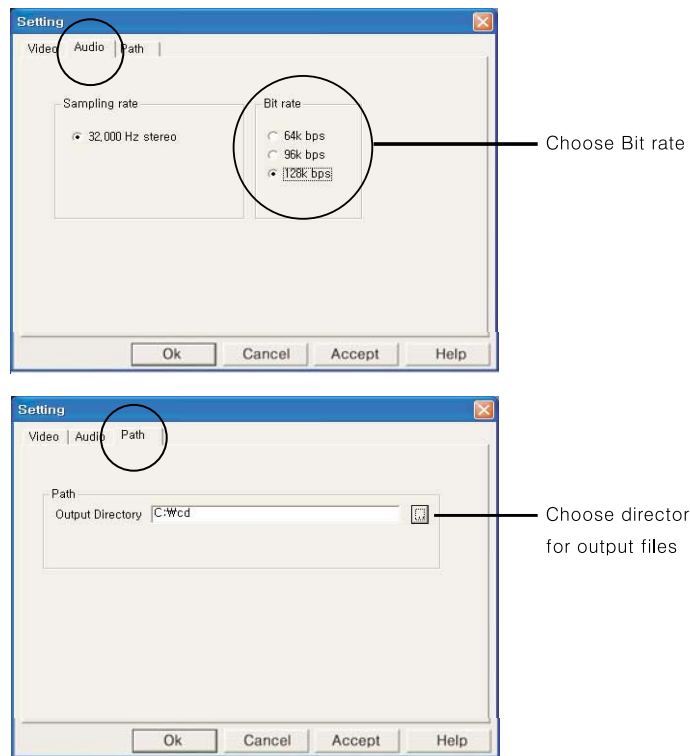
Set options for video and audio, and choose a directory where you want to store output files in.



In case with Divx file, many of films were set for 720 × 480 screen and, if you convert them for 176 × 144 screen, the images will be widened. Choose this option to see these films with their original screen settings.






Option Setting	Software
----------------	----------



Playing mobiBLU Player	Software
------------------------	----------

Encoded files can be played in mobiBLU Player.

Double Click on  icon → press  to select the file you desire to play
 → press  to play the file



[in playing]

MEMO

11. Others

1. This may not be a trouble!	78
2. Warranty Services	80
3. FCC RF INTERFERENCE STATEMENT	81
4. Warranty Card	82

This may not be a trouble!

Others

Followings may not be troubles, please carefully examine symptoms.



Can not turn the Power on? .



1. Check the battery capacity. Recharge the battery with USB cable.
2. Check if the product is in HOLD.



Button is not functioning?



- Check if the product is in HOLD.



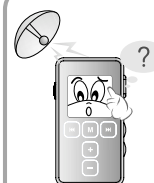
Can not hear sound sources properly with much noise?



1. Check if any foreign material applied on earphone tip and, if yes, remove it.
2. Completely push the earphone tip into the product.
3. Check if the file is damaged.
4. Check the volume.

This may not be a trouble!

Others



Too much noise with interrupted FM receiving?



1. Check the earphone. It functions as an antenna.
2. Use the product away from peripheral electric devices



Trouble with file downloading?



1. Check USB cable connection.
2. Check the available memory capacity.



LCD is not activated?



1. Check LCD brightness set. (Menu => Screen Set => Brightness Set)
2. Check the battery. Recharge it with a USB cable if needed.

- The purchaser of this product is entitled to receive warranty services for one year from the date of purchase. This warranty is not applicable to those troubles made by improper use, accident or act of god.

The warranty does not cover the following;

1. Any foreign material (water, beverage, coffee, sand or others) penetrated or introduced into the product.
2. Damaged or functionally abnormal product resulted by external shocks including dropping.
3. Damaged or deformed frame resulted by the use of organic solvents such as benzene or thinner.
4. Unauthorized modifications carried out for the product using the parts or component produced by other manufacturers.
5. Loss of damaged parts or components resulted by unauthorized disassembly of the product.
6. Troubles related with the repairs performed by unauthorized service personnel or center.

Note

This equipment has been tested and found to comply with the limits for a Class B digital device, pursuant to Part 15 of the FCC Rules. These limits are designed to provide reasonable protection against harmful interference in a residential installation. This equipment generates, uses and can radiate radio frequency energy and, if not installed and used in accordance with the instructions, may cause harmful interference to radio communications. However, there is no guarantee that interference will not occur in a particular installation.

If this equipment does cause harmful interference to radio or television reception which can be determined by turning the equipment off and on, the user is encouraged to try to correct the interference by one or more of the following measures.

- Reorient or relocate the receiving antenna.
- Increase the separation between the equipment and receiver.
- Connect the equipment into an outlet on a circuit different from that to which the receiver is connected.
- Consult the dealer or an experienced radio, TV technical for help.
- Only shielded interface cable should be used.

Finally, any changes or modifications to the equipment by the user not expressly approved by the grantee or manufacturer could void the users authority to operate such equipment.

CAUTION

Changes or modifications not expressly approved by the party responsible for compliance could void the user's authority to operate the equipment.

THIS DEVICE COMPLIES WITH PART 15 OF THE FCC RULES. OPERATION IS SUBJECT TO THE FOLLOWING TWO CONDITIONS: (1) THIS DEVICE MAY NOT CAUSE HARMFUL INTERFERENCE, AND (2) THIS DEVICE MUST ACCEPT ANY INTERFERENCE RECEIVED INCLUDING INTERFERENCE THAT MAY CAUSE UNDESIRE OPERATION.

MEMO

WARRANTY FORM

Warranty Term: 1 year from the date of purchase Product

Model :

Date of Purchase : (month) (day) (year)

Name of purchaser : Phone Number :

Address :

Place Purchased : Phone Number :

Address :



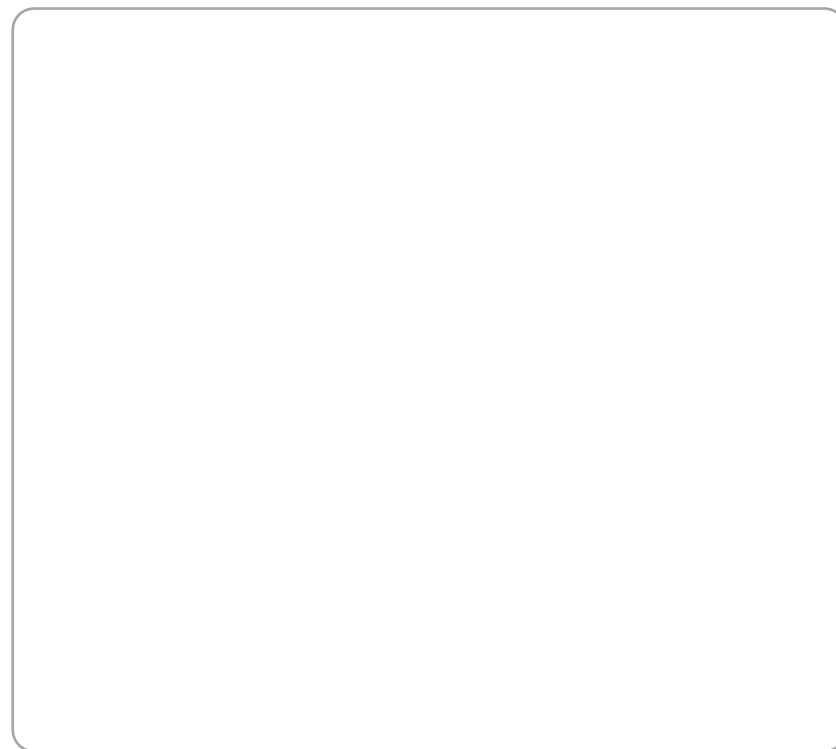
Hyunwon Incorporated

- You need to show this Warranty Certificate with the date of purchase when requesting service, in order to receive satisfactory services. Please keep the Warranty Certificate in a safe place.

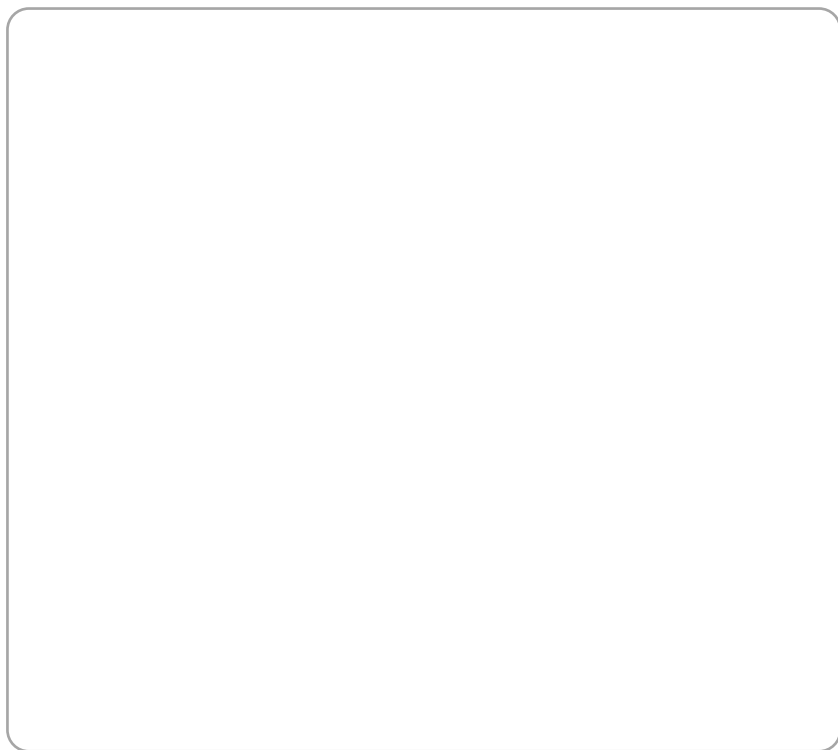
1. The warranty service on this product is provided based on the information contained in the Warranty Certificate.
2. The warranty service takes effect from the date of purchase, so please make sure you enter the date of purchase on the Warranty Certificate at the time of purchase. (If the date of purchase cannot be verified, the date 6 months from the date of manufacturing will be use instead.)
3. This Warranty Certificate is not reissued.

The exterior or dimensions are subject to change without prior notice to the customer in order to improve the product quality.

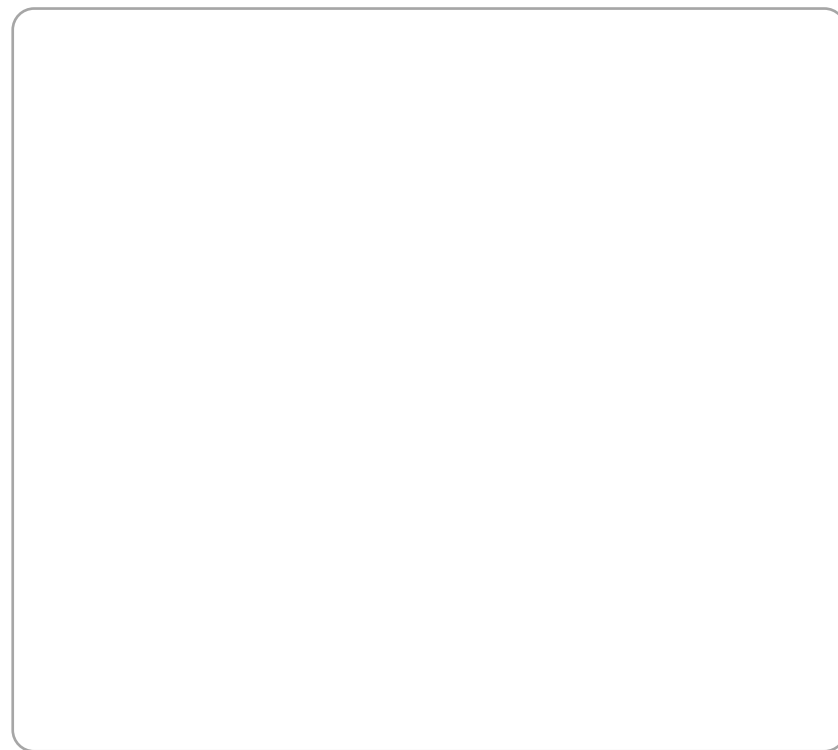
MEMO

A large, empty rectangular box with rounded corners, intended for writing a memo. The box is white with a thin gray border and is positioned below the 'MEMO' label.

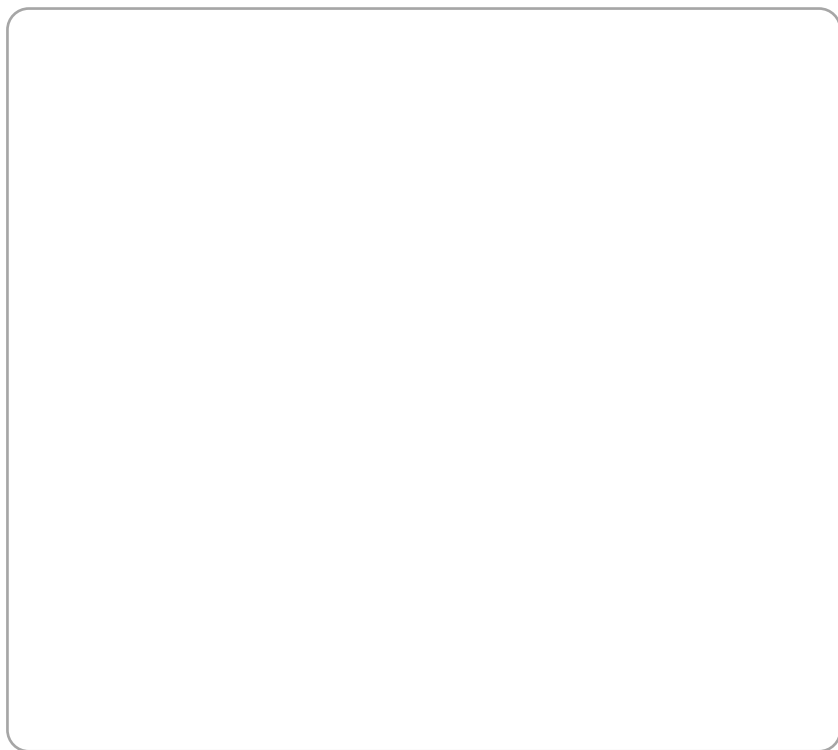
MEMO



MEMO



MEMO



MEMO

