

TWO CARS IN ONE!

WIRELESS REMOTE CONTROL FOR FULLFUNCTIONAL RACING ACTION

HIGH-PERFORMANCE FAST RACE AND STUNT ACTION

VERSATILE RC STUNT VEHICLE WITH 2-SIDED BODY FOR FLIP STUNTS



full function wireless remote control

extra bright LED headlights



high-performance rubber grip tires



flip stunt rally remote control

THE BLACK SERIES

THE BLACK SERIES™



BOX CONTAINS THE FOLLOWING FREQUENCY:  
27 MHz  
49 MHz



BATTERY OPERATED PLAY VEHICLE  
AGES 6 AND UP

WARNING! CHOKING HAZARD- Small parts. Not suitable for children under 3 years.

WIRELESS RC ACTION!



THE BLACK SERIES™ remote control flip stunt rally



TWO CARS IN ONE!

FLIPS OVER FOR TWO CARS IN ONE



FLIPS OVER FOR TWO CARS IN ONE!

remote control flip stunt rally

flip and spin stunt action

CRASH-FREE OPERATION

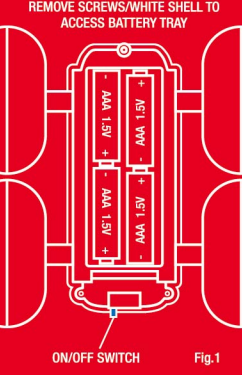
BATTERY INSTALLATION

Operation requires four "AAA" 1.5V batteries (not included) for vehicle, and one 9V battery (not included) for remote controller.  
• The access to the battery compartment is located on the back of the white side of the vehicle.  
• Uncover the white side of the car using a standard screwdriver.  
• Locate the battery contacts (Fig. 1). Insert four "AAA" 1.5V batteries according to the polarity diagram.  
• Replace the white side of the vehicle. Replace screws.  
• Slide open the battery compartment door of the radio controller.  
• Insert one 9V battery according to the polarity diagram on the battery tray (Fig. 2).  
• Replace battery compartment and battery cover.

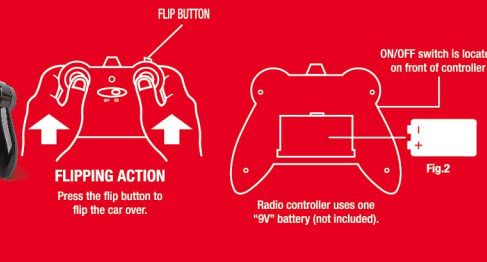
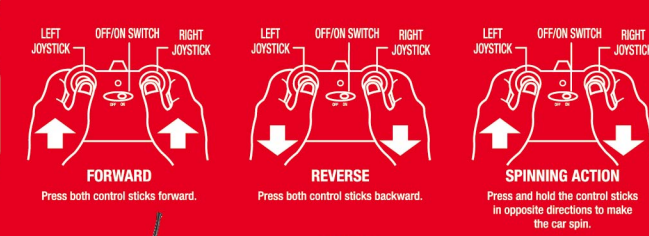
SAFETY PRECAUTIONS

• Not recommended for children under 6 years of age.  
• Use with all electrical products; precautions should be observed to reduce the risk of electrical shock.  
• Examine your product before each use. If potential hazards are found, discontinue use and discard immediately.  
• Do not operate during thunderstorms or rain.  
• Avoid water, sand and snow when operating vehicle.  
• Do not submerge vehicle or controller in water.  
• Never operate vehicle on the street or highway.  
• Remove all batteries when not in use to avoid accidental operation.  
• Never operate vehicle in a confined or crowded area, and do not use people or animals as obstacles.  
• Do not run vehicle into furniture, objects or hard surfaces, as this will cause damage to both the objects and the vehicle.  
• Keep fingers, hair and loose clothing away from the fans, gears and motor while the vehicle is switched to "ON".  
• Do not leave vehicle or controller near sources of heat or under direct sunlight for extended periods.  
• Do not leave vehicle or controller outside overnight. Dampness is harmful to interior components.  
• Adult supervision is recommended when operating vehicle.  
Warning: Changes or modifications to this unit not expressly approved by the party responsible for compliance could void the user's authority to operate the equipment.

BASIC OPERATION



NOTE: YOUR STUNT VEHICLE WORKS BEST IN LARGE, OPEN AREAS.  
• Switch the controller power switch to the "ON" position.  
• Operate the stunt vehicle according to the controls diagram below.  
• For best operation, use on a hard and flat surface.  
• For best flipping performance, use on asphalt or carpeted surfaces.



This device complies with Part 15 of the FCC Rules. Operation is subject to the following two conditions: (1) this device may not cause harmful interference, and (2) this device must accept any interference received, including interference that may cause undesired operation.  
Note: This equipment has been tested and found to comply with the limits for a Class B digital device, pursuant to part 15 of the FCC Rules. These limits are designed to provide reasonable protection against harmful interference in a residential installation. This equipment generates, uses and can radiate radio frequency energy and, if not installed and used in accordance with the instructions, may cause harmful interference to radio communications.  
However, there is no guarantee that interference will not occur in a particular installation. If this equipment does cause harmful interference to radio or television reception, which can be determined by turning the equipment off and on, the user is encouraged to try to correct the interference by one or more of the following measures:  
—Reorient or relocate the receiving antenna.  
—Increase the separation between the equipment and receiver.  
—Connect the equipment into an outlet on a circuit different from that to which the receiver is connected.  
—Consult the dealer or an experienced radio/TV technician for help.

BATTERY WARNING:  
• Do not mix old and new batteries.  
• Do not mix alkaline, standard (carbon-zinc) or rechargeable batteries.  
• Insert batteries using the correct polarity. Do not short circuit the supply terminals.  
• Remove batteries when not in use. Recycle or dispose of exhausted batteries according to local, state, and federal laws. Do not dispose of batteries as a fire—they may leak or explode.  
• Only use manufacturer specified (and/or) charged and/or adapter, if applicable, specified by the manufacturer.  
• Always use, replace, and recycle (if applicable) batteries under adult supervision.

1010964 (2310828)  
8 13479 1 0342 7  
Made in China

Black Series™ name and all associated logos are trademarks of MicroSource, LLC. Distributed by and © 2019 MicroSource, LLC. Irvine, CA 92618. All rights reserved.  
PATENT PENDING  
For technical support, please call 1-800-374-2744